

Data Path : Z:\voasrv\HPCHEM1\MSVOA_X\Data\VX111723\
 Data File : VX038875.D
 Acq On : 17 Nov 2023 13:10
 Operator : JC/MD
 Sample : 05403-04RE
 Misc : 5.0mL/MSVOA_X/WATER
 ALS Vial : 9 Sample Multiplier: 1

Instrument :
 MSVOA_X
 ClientSampleId :
 TB02-20231107

Quant Time: Nov 17 22:49:28 2023
 Quant Method : Z:\voasrv\HPCHEM1\MSVOA_X\Method\82X111623W.M
 Quant Title : SW846 8260
 QLast Update : Thu Nov 16 22:59:22 2023
 Response via : Initial Calibration

Compound	R.T.	QIon	Response	Conc	Units	Dev(Min)

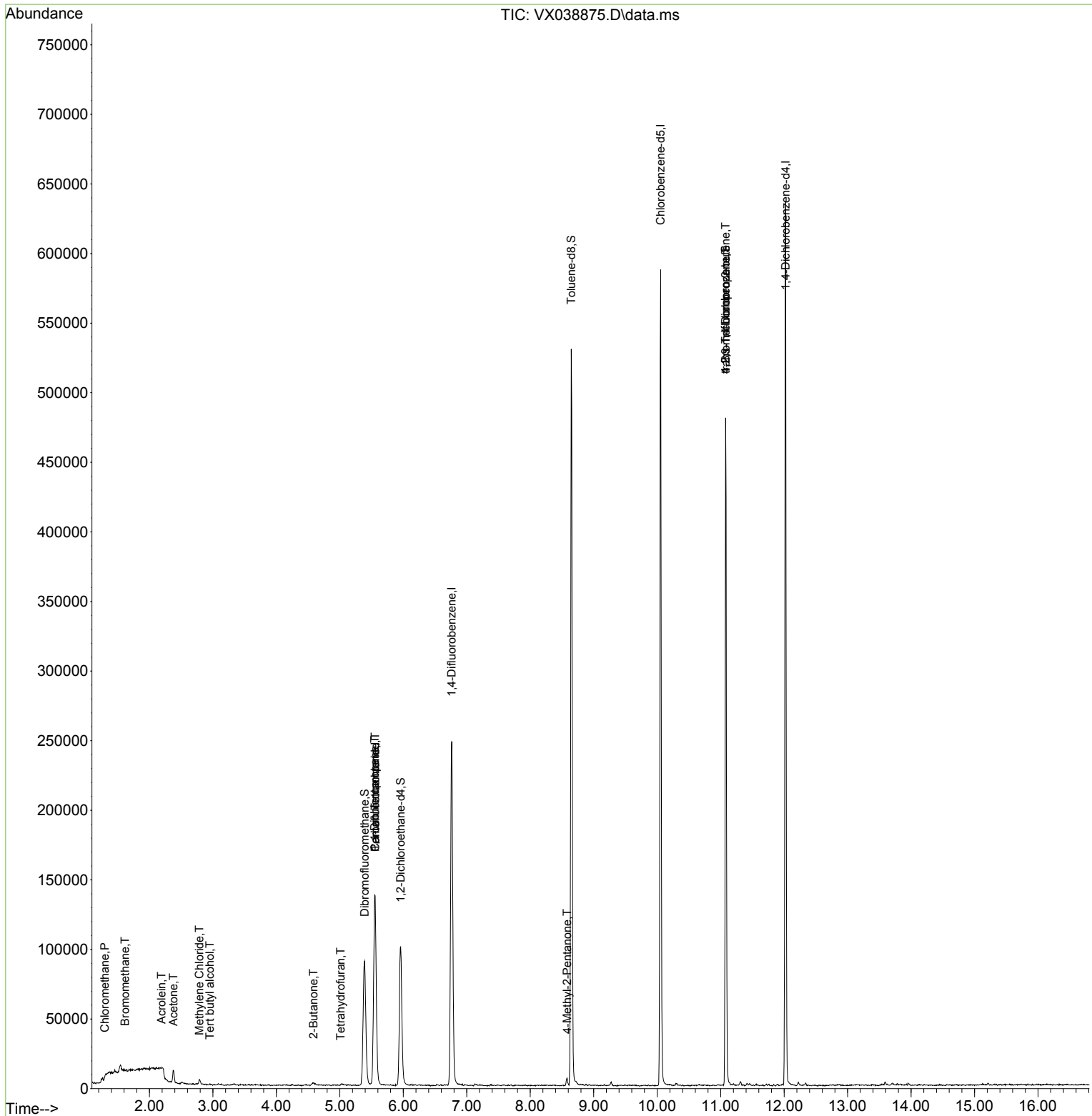
Internal Standards						
1) Pentafluorobenzene	5.556	168	126011	50.000	ug/l	0.00
34) 1,4-Difluorobenzene	6.763	114	254000	50.000	ug/l	0.00
63) Chlorobenzene-d5	10.055	117	257095	50.000	ug/l	0.00
72) 1,4-Dichlorobenzene-d4	12.024	152	129649	50.000	ug/l	0.00
System Monitoring Compounds						
33) 1,2-Dichloroethane-d4	5.958	65	94458	46.520	ug/l	0.00
Spiked Amount	50.000	Range	78 - 117	Recovery	=	93.040%
35) Dibromofluoromethane	5.391	113	81347	44.344	ug/l	0.00
Spiked Amount	50.000	Range	75 - 124	Recovery	=	88.680%
50) Toluene-d8	8.647	98	319319	45.496	ug/l	0.00
Spiked Amount	50.000	Range	92 - 112	Recovery	=	91.000%#
62) 4-Bromofluorobenzene	11.079	95	135929	48.380	ug/l	0.00
Spiked Amount	50.000	Range	83 - 123	Recovery	=	96.760%
Target Compounds						
						Qvalue
3) Chloromethane	1.294	50	547	0.285	ug/l	95
5) Bromomethane	1.618	94	229	0.300	ug/l #	4
11) Tert butyl alcohol	2.953	59	304	0.538	ug/l #	1
13) Acrolein	2.191	56	221	0.740	ug/l #	14
16) Acetone	2.380	43	9711	8.984	ug/l	93
20) Methylene Chloride	2.788	84	1763	0.905	ug/l	85
25) 2-Butanone	4.587	43	2546	1.453	ug/l #	87
29) Tetrahydrofuran	5.013	42	764	0.686	ug/l #	77
36) 1,1-Dichloropropene	5.550	75	11307	4.301	ug/l #	51
38) Carbon Tetrachloride	5.556	117	13690	5.634	ug/l #	16
51) 4-Methyl-2-Pentanone	8.580	43	3784	1.082	ug/l	100
76) 1,2,3-Trichloropropane	11.079	75	70143	21.684	ug/l #	39
81) trans-1,4-Dichloro-2-b...	11.079	75	70143	48.098	ug/l #	5

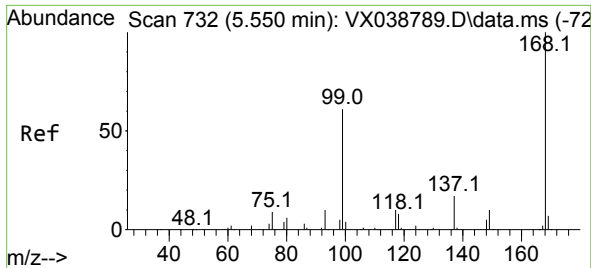
(#) = qualifier out of range (m) = manual integration (+) = signals summed

Data Path : Z:\voasrv\HPCHEM1\MSVOA_X\Data\VX111723\
 Data File : VX038875.D
 Acq On : 17 Nov 2023 13:10
 Operator : JC/MD
 Sample : 05403-04RE
 Misc : 5.0mL/MSVOA_X/WATER
 ALS Vial : 9 Sample Multiplier: 1

Instrument :
 MSVOA_X
 ClientSampleId :
 TB02-20231107

Quant Time: Nov 17 22:49:28 2023
 Quant Method : Z:\voasrv\HPCHEM1\MSVOA_X\Method\82X111623W.M
 Quant Title : SW846 8260
 QLast Update : Thu Nov 16 22:59:22 2023
 Response via : Initial Calibration

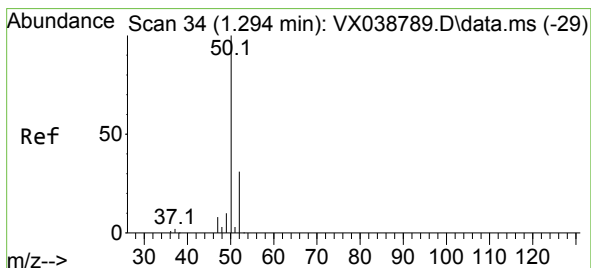
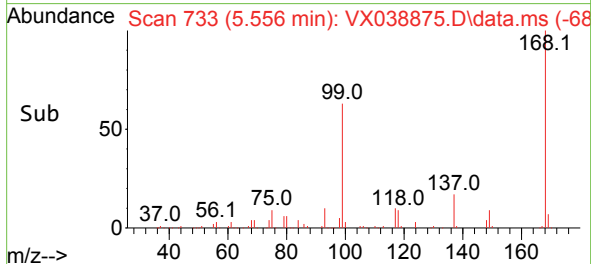
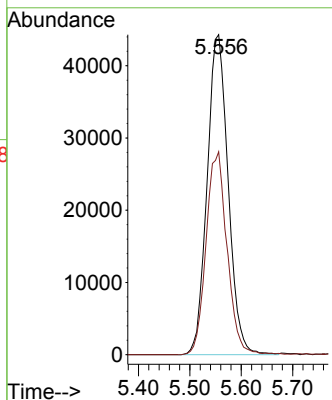
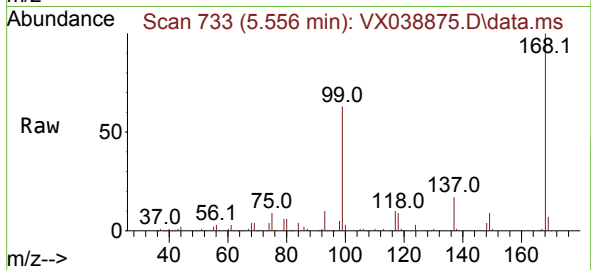




#1
 Pentafluorobenzene
 Concen: 50.000 ug/l
 RT: 5.556 min Scan# 71
 Delta R.T. 0.006 min
 Lab File: VX038875.D
 Acq: 17 Nov 2023 13:10

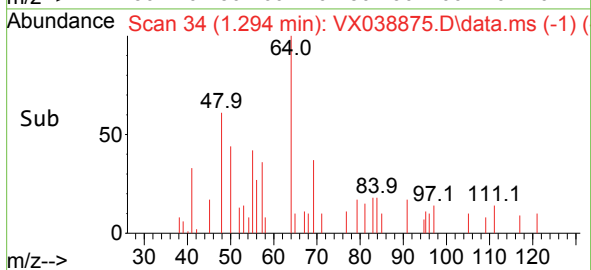
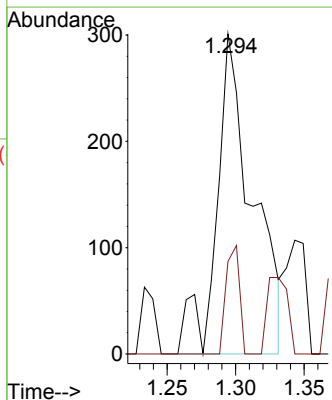
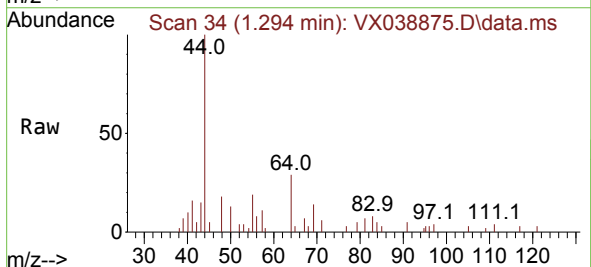
Instrument :
 MSVOA_X
 ClientSampleId :
 TB02-20231107

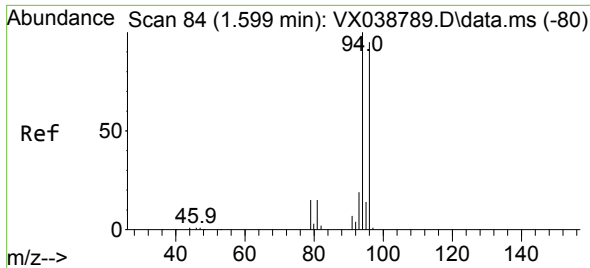
Tgt Ion:168 Resp: 126011
 Ion Ratio Lower Upper
 168 100
 99 63.4 56.6 85.0



#3
 Chloromethane
 Concen: 0.285 ug/l
 RT: 1.294 min Scan# 34
 Delta R.T. 0.000 min
 Lab File: VX038875.D
 Acq: 17 Nov 2023 13:10

Tgt Ion: 50 Resp: 547
 Ion Ratio Lower Upper
 50 100
 52 28.9 25.5 38.3

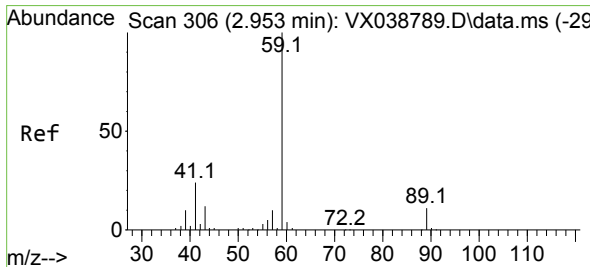
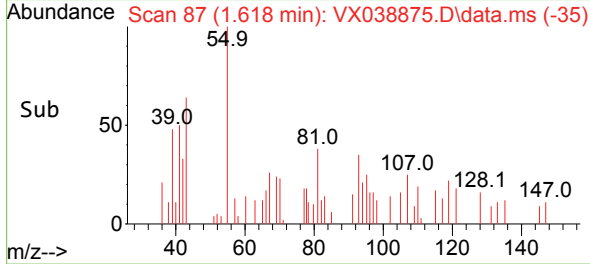
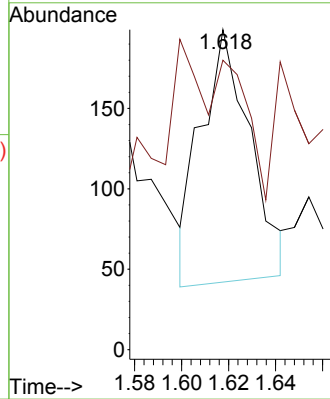
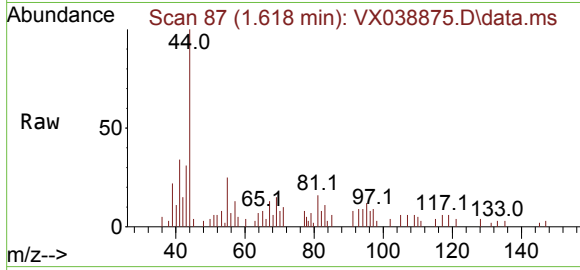




#5
 Bromomethane
 Concen: 0.300 ug/l
 RT: 1.618 min Scan# 81
 Delta R.T. 0.019 min
 Lab File: VX038875.D
 Acq: 17 Nov 2023 13:10

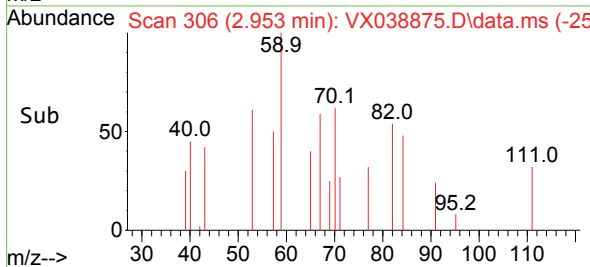
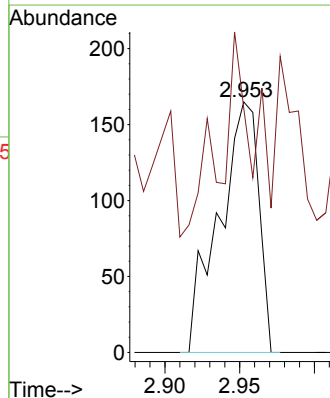
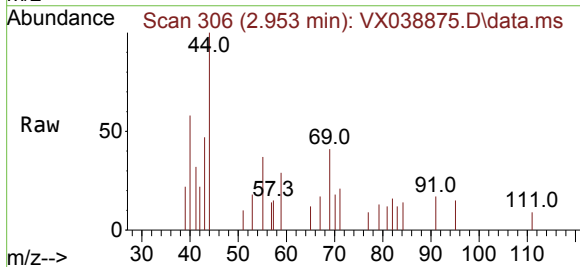
Instrument : MSVOA_X
 ClientSampleId : TB02-20231107

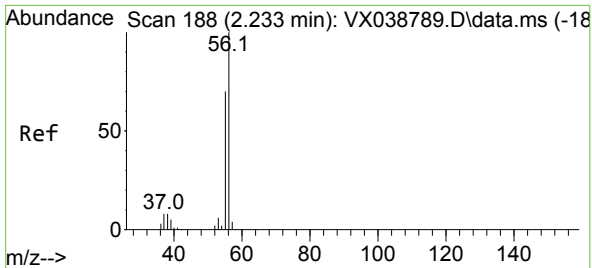
Tgt Ion: 94 Resp: 229
 Ion Ratio Lower Upper
 94 100
 96 0.8 74.6 111.8#



#11
 Tert butyl alcohol
 Concen: 0.538 ug/l
 RT: 2.953 min Scan# 306
 Delta R.T. 0.000 min
 Lab File: VX038875.D
 Acq: 17 Nov 2023 13:10

Tgt Ion: 59 Resp: 304
 Ion Ratio Lower Upper
 59 100
 57 48.7 6.0 9.0#

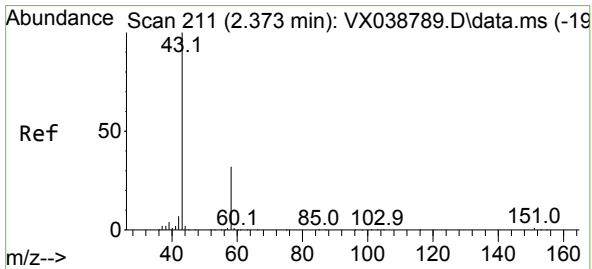
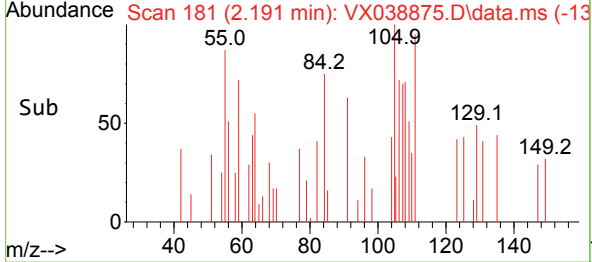
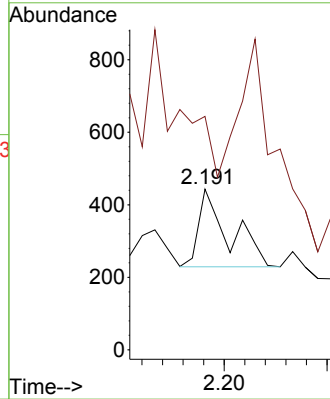
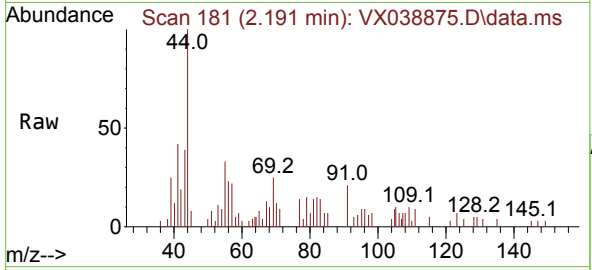




#13
 Acrolein
 Concen: 0.740 ug/l
 RT: 2.191 min Scan# 11
 Delta R.T. -0.043 min
 Lab File: VX038875.D
 Acq: 17 Nov 2023 13:10

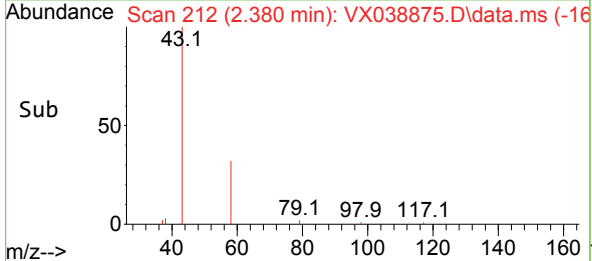
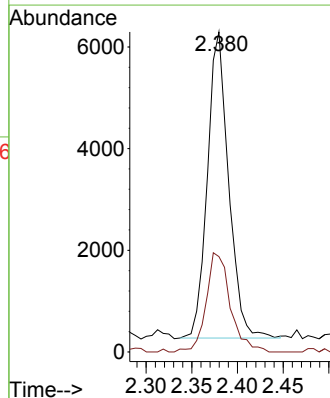
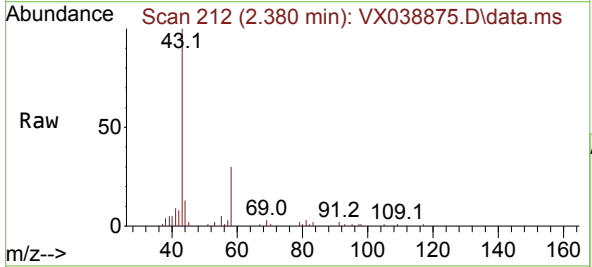
Instrument : MSVOA_X
 ClientSampleId : TB02-20231107

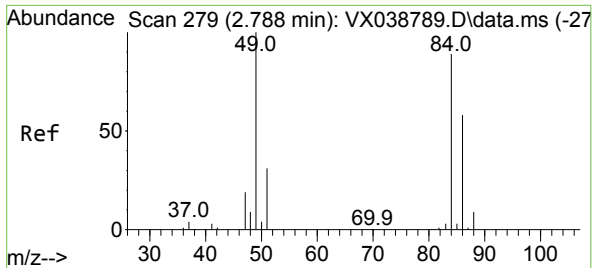
Tgt Ion: 56 Resp: 221
 Ion Ratio Lower Upper
 56 100
 55 0.0 57.1 85.7#



#16
 Acetone
 Concen: 8.984 ug/l
 RT: 2.380 min Scan# 212
 Delta R.T. 0.006 min
 Lab File: VX038875.D
 Acq: 17 Nov 2023 13:10

Tgt Ion: 43 Resp: 9711
 Ion Ratio Lower Upper
 43 100
 58 31.1 21.9 32.9

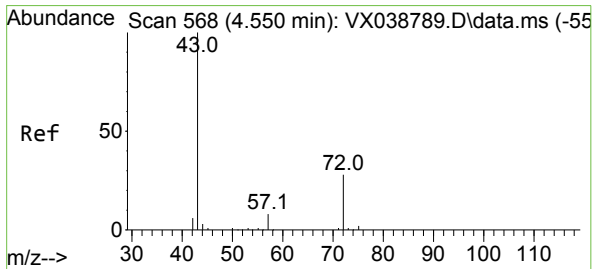
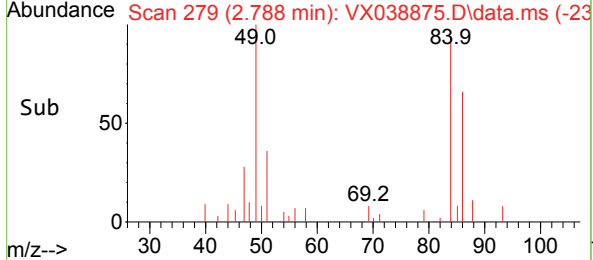
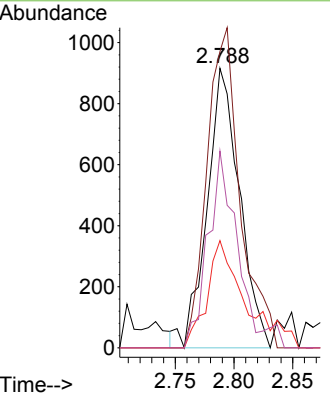
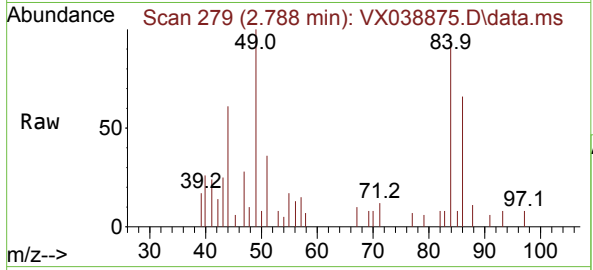




#20
 Methylene Chloride
 Concen: 0.905 ug/l
 RT: 2.788 min Scan# 21
 Delta R.T. 0.000 min
 Lab File: VX038875.D
 Acq: 17 Nov 2023 13:10

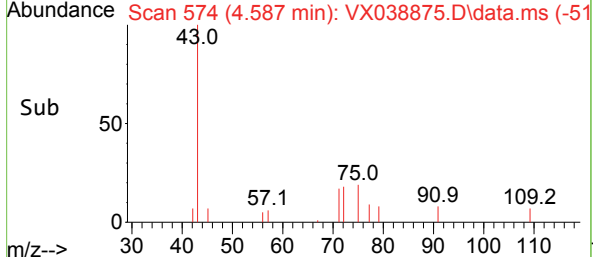
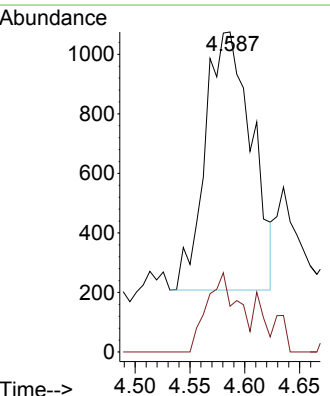
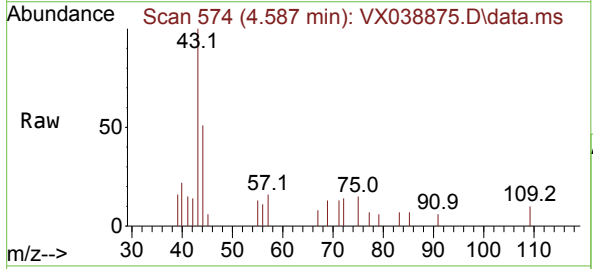
Instrument : MSVOA_X
 ClientSampleId : TB02-20231107

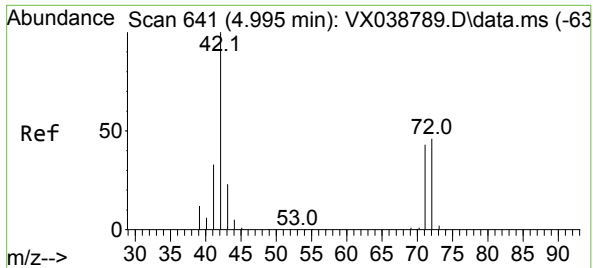
Tgt Ion	Resp	Lower	Upper
84	1763		
49	106.0	103.6	155.4
51	38.3	33.8	50.6
86	70.4	49.4	74.0



#25
 2-Butanone
 Concen: 1.453 ug/l
 RT: 4.587 min Scan# 574
 Delta R.T. 0.037 min
 Lab File: VX038875.D
 Acq: 17 Nov 2023 13:10

Tgt Ion	Resp	Lower	Upper
43	2546		
72	17.8	19.4	29.2#

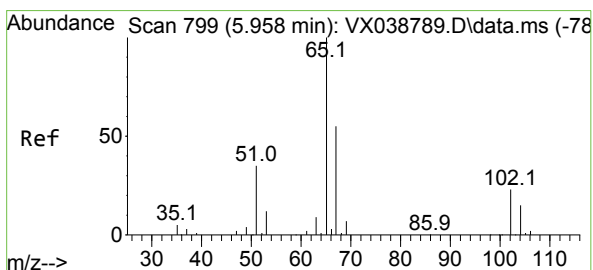
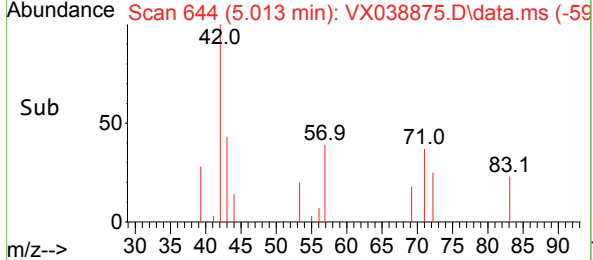
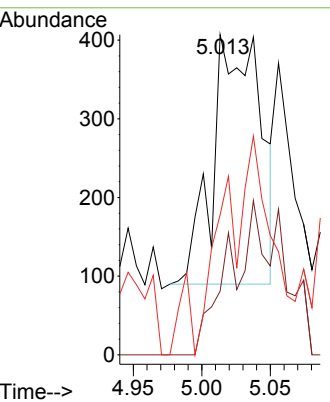
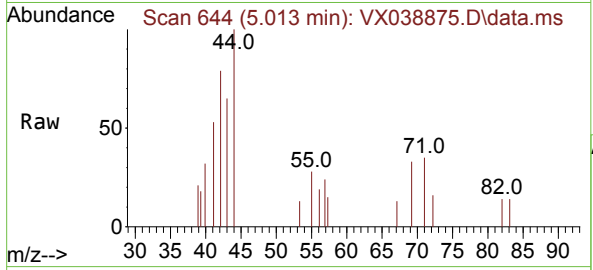




#29
 Tetrahydrofuran
 Concen: 0.686 ug/l
 RT: 5.013 min Scan# 644
 Delta R.T. 0.018 min
 Lab File: VX038875.D
 Acq: 17 Nov 2023 13:10

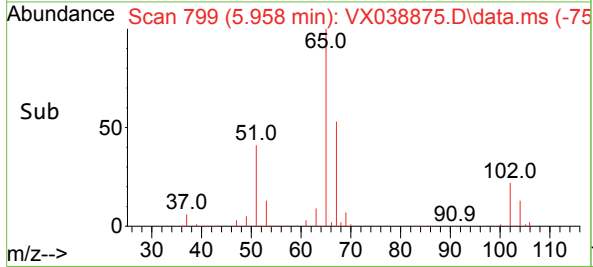
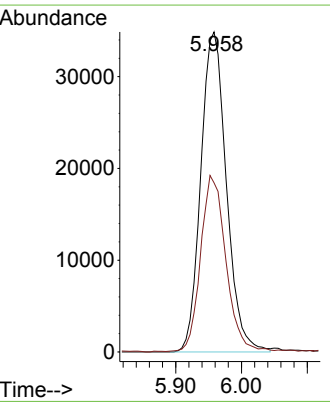
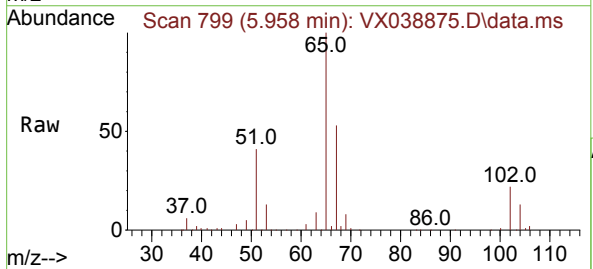
Instrument : MSVOA_X
 ClientSampleId : TB02-20231107

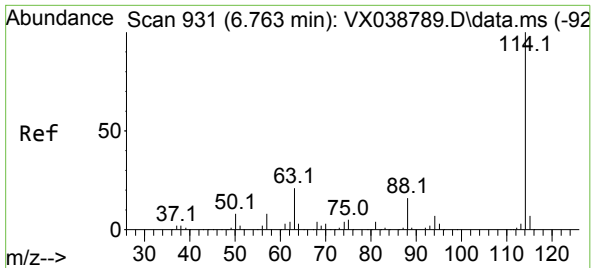
Tgt Ion	Resp	Lower	Upper
42	100		
72	20.7	34.2	51.4#
71	33.6	32.2	48.2



#33
 1,2-Dichloroethane-d4
 Concen: 46.520 ug/l
 RT: 5.958 min Scan# 799
 Delta R.T. 0.000 min
 Lab File: VX038875.D
 Acq: 17 Nov 2023 13:10

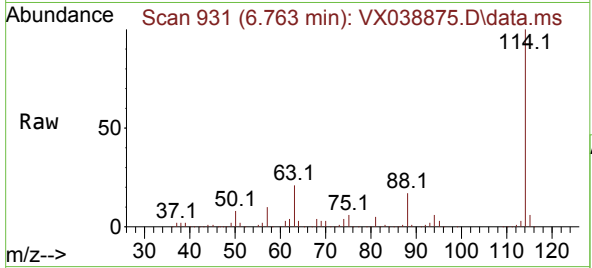
Tgt Ion	Resp	Lower	Upper
65	100		
67	54.0	0.0	100.2



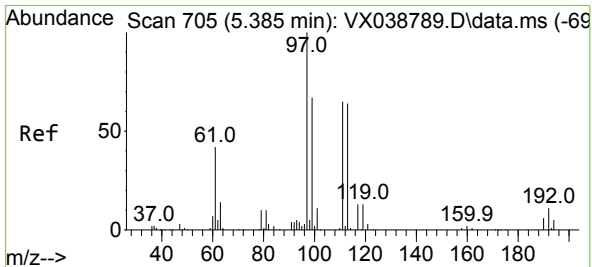
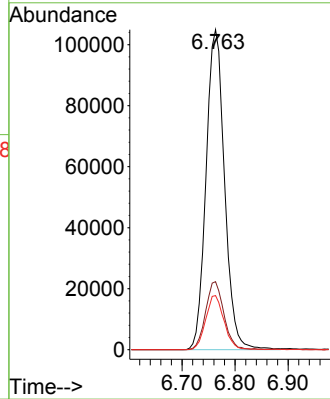
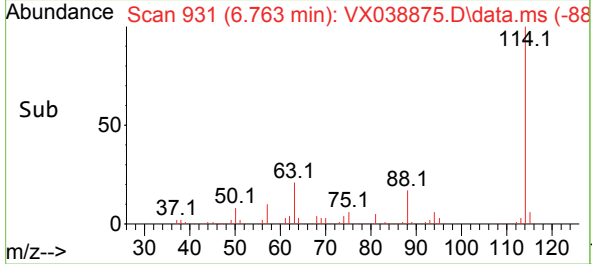


#34
 1,4-Difluorobenzene
 Concen: 50.000 ug/l
 RT: 6.763 min Scan# 91
 Delta R.T. 0.000 min
 Lab File: VX038875.D
 Acq: 17 Nov 2023 13:10

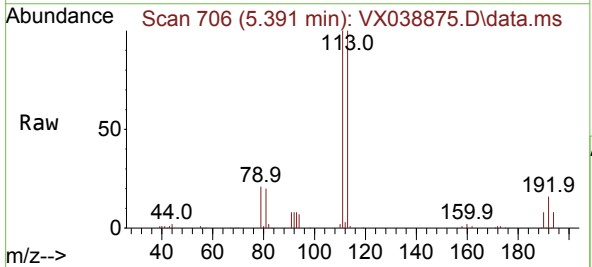
Instrument :
 MSVOA_X
 ClientSampleId :
 TB02-20231107



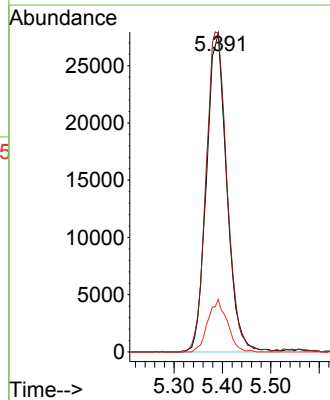
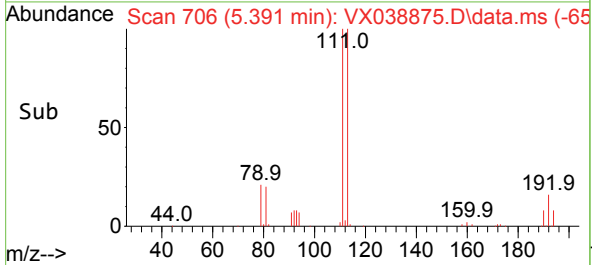
Tgt Ion:114 Resp: 254000
 Ion Ratio Lower Upper
 114 100
 63 21.3 0.0 45.0
 88 16.9 0.0 36.6

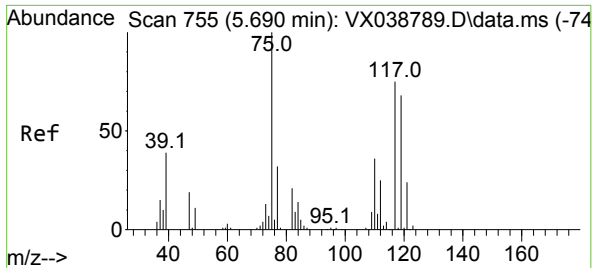


#35
 Dibromofluoromethane
 Concen: 44.344 ug/l
 RT: 5.391 min Scan# 706
 Delta R.T. 0.006 min
 Lab File: VX038875.D
 Acq: 17 Nov 2023 13:10



Tgt Ion:113 Resp: 81347
 Ion Ratio Lower Upper
 113 100
 111 103.6 82.9 124.3
 192 15.7 13.3 19.9

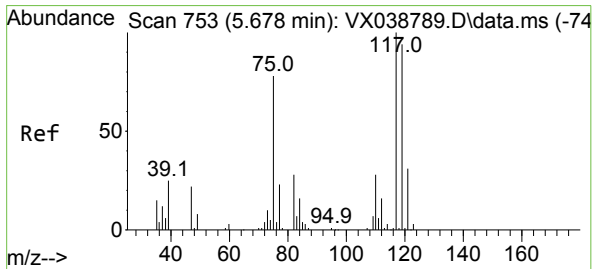
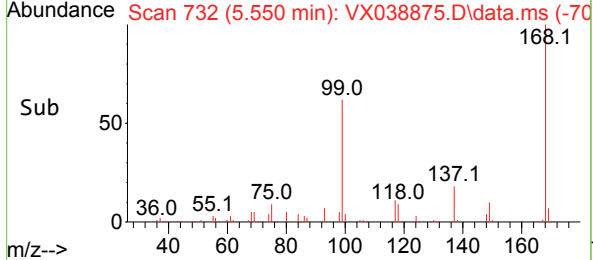
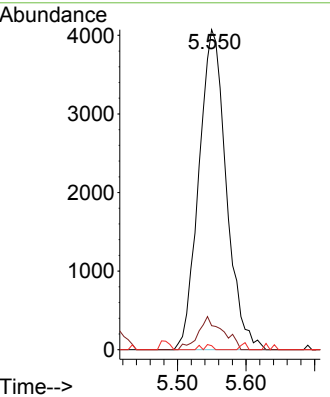
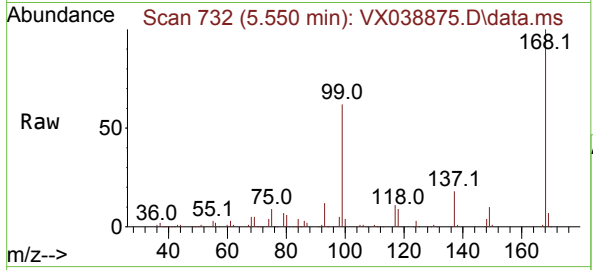




#36
 1,1-Dichloropropene
 Concen: 4.301 ug/l
 RT: 5.550 min Scan# 711
 Delta R.T. -0.140 min
 Lab File: VX038875.D
 Acq: 17 Nov 2023 13:10

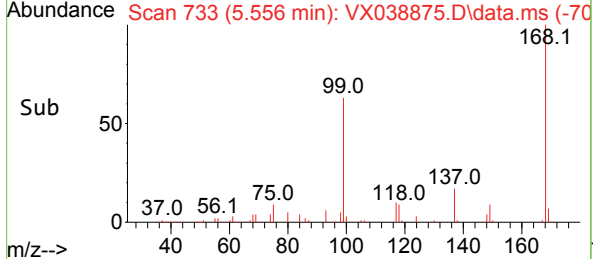
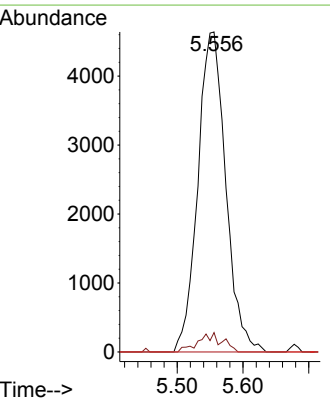
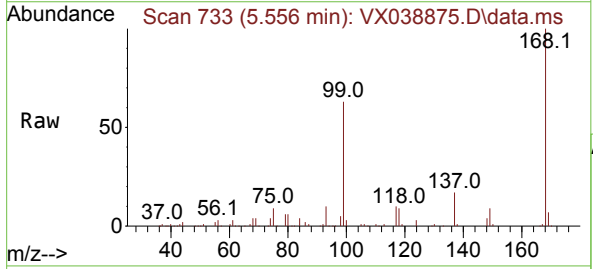
Instrument : MSVOA_X
 ClientSampleId : TB02-20231107

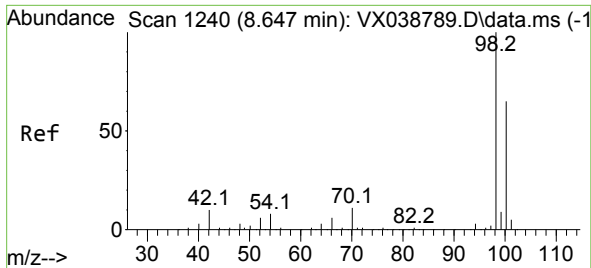
Tgt Ion	Resp	Lower	Upper
75	11307		
75	100		
110	9.3	17.0	50.9#
77	0.6	24.7	37.1#



#38
 Carbon Tetrachloride
 Concen: 5.634 ug/l
 RT: 5.556 min Scan# 733
 Delta R.T. -0.122 min
 Lab File: VX038875.D
 Acq: 17 Nov 2023 13:10

Tgt Ion	Resp	Lower	Upper
117	13690		
117	100		
119	6.1	78.2	117.2#
121	0.0	24.4	36.6#

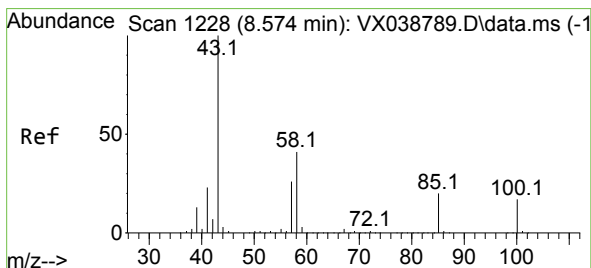
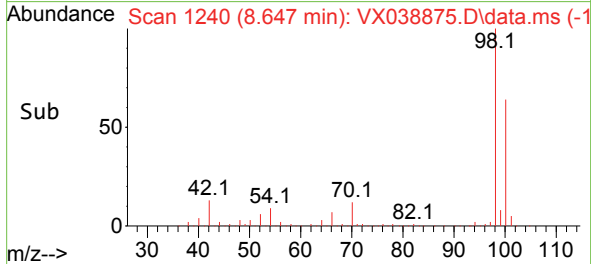
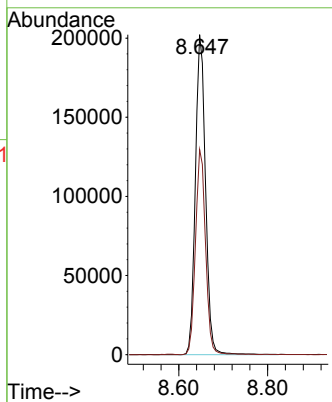
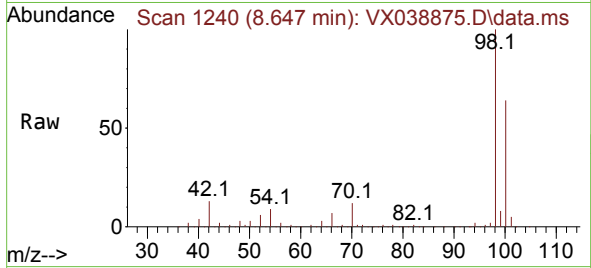




#50
 Toluene-d8
 Concen: 45.496 ug/l
 RT: 8.647 min Scan# 11
 Delta R.T. 0.000 min
 Lab File: VX038875.D
 Acq: 17 Nov 2023 13:10

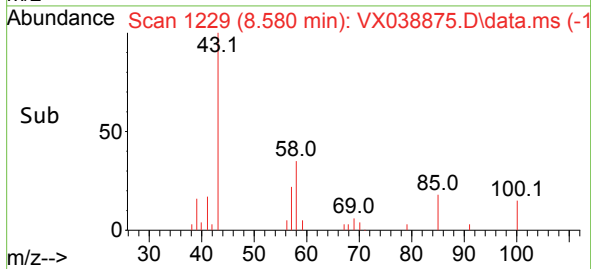
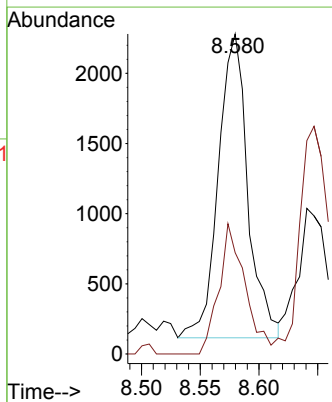
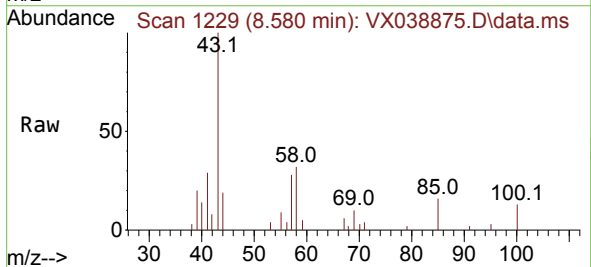
Instrument :
 MSVOA_X
 ClientSampleId :
 TB02-20231107

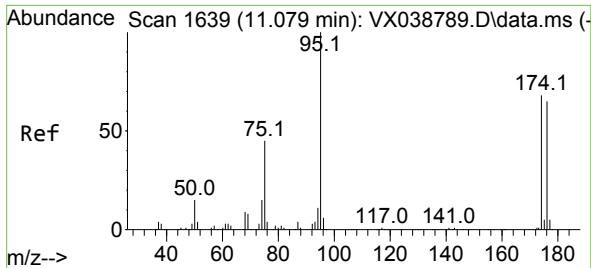
Tgt Ion: 98 Resp: 319319
 Ion Ratio Lower Upper
 98 100
 100 63.8 53.1 79.7



#51
 4-Methyl-2-Pentanone
 Concen: 1.082 ug/l
 RT: 8.580 min Scan# 1229
 Delta R.T. 0.006 min
 Lab File: VX038875.D
 Acq: 17 Nov 2023 13:10

Tgt Ion: 43 Resp: 3784
 Ion Ratio Lower Upper
 43 100
 58 38.0 30.4 45.6

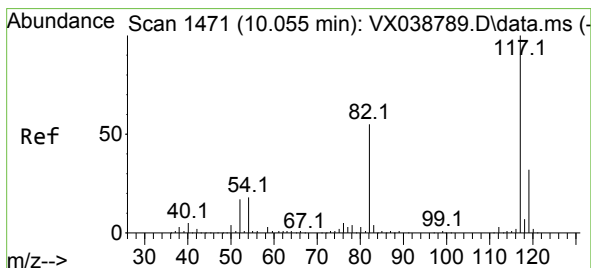
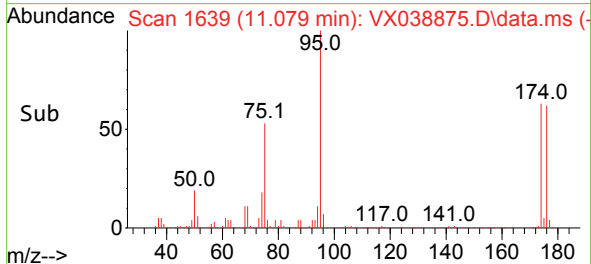
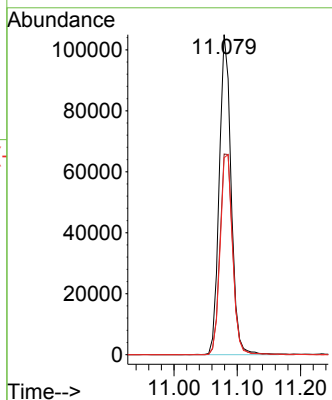
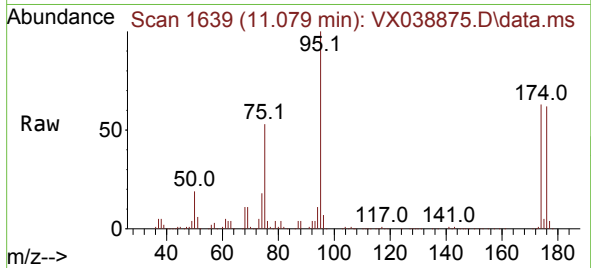




#62
 4-Bromofluorobenzene
 Concen: 48.380 ug/l
 RT: 11.079 min Scan# 1639
 Delta R.T. 0.000 min
 Lab File: VX038875.D
 Acq: 17 Nov 2023 13:10

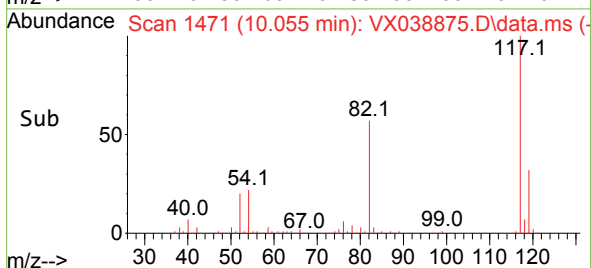
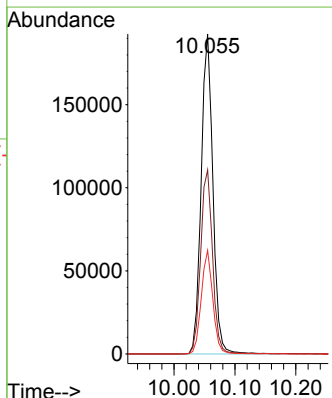
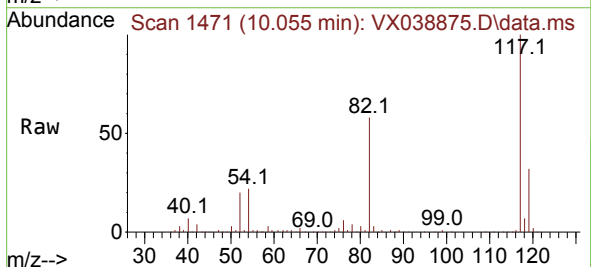
Instrument : MSVOA_X
 ClientSampleId : TB02-20231107

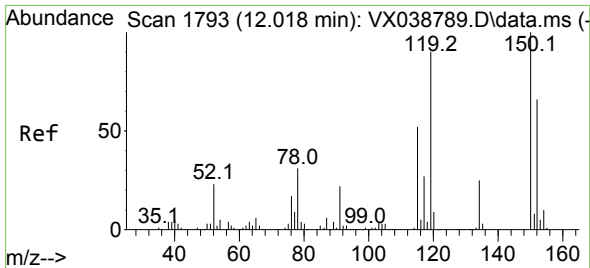
Tgt Ion: 95 Resp: 135929
 Ion Ratio Lower Upper
 95 100
 174 66.9 0.0 135.6
 176 65.4 0.0 131.0



#63
 Chlorobenzene-d5
 Concen: 50.000 ug/l
 RT: 10.055 min Scan# 1471
 Delta R.T. 0.000 min
 Lab File: VX038875.D
 Acq: 17 Nov 2023 13:10

Tgt Ion: 117 Resp: 257095
 Ion Ratio Lower Upper
 117 100
 82 57.5 46.2 69.4
 119 32.3 25.5 38.3

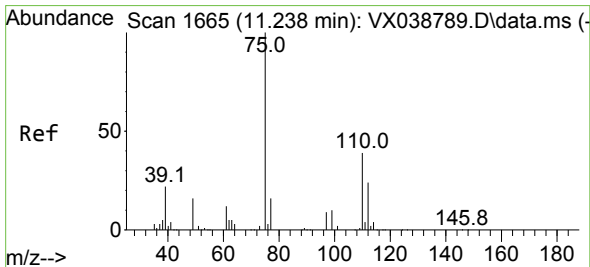
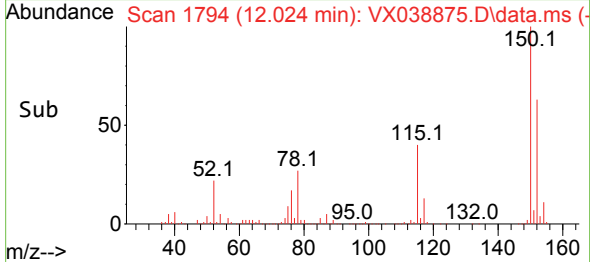
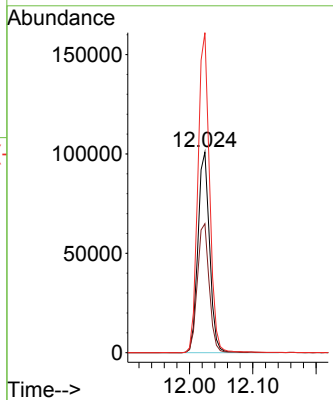
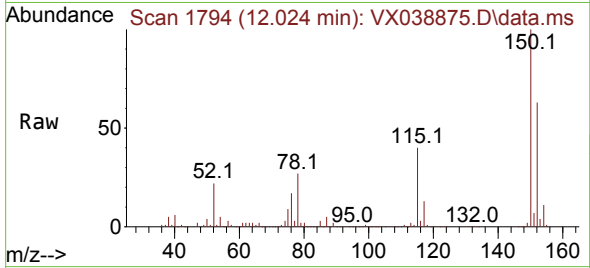




#72
 1,4-Dichlorobenzene-d4
 Concen: 50.000 ug/l
 RT: 12.024 min Scan# 11
 Delta R.T. 0.006 min
 Lab File: VX038875.D
 Acq: 17 Nov 2023 13:10

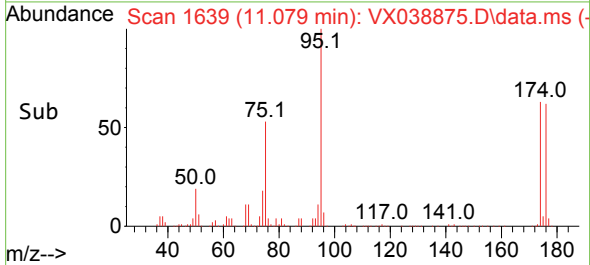
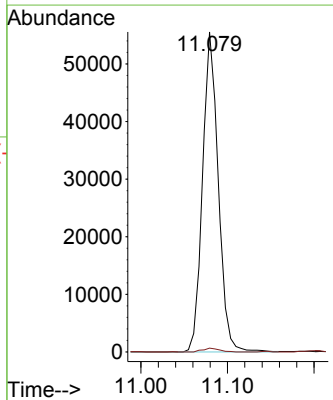
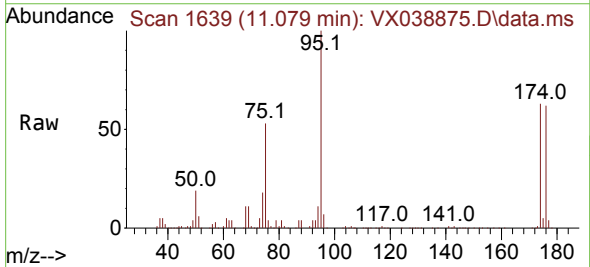
Instrument :
 MSVOA_X
 ClientSampleId :
 TB02-20231107

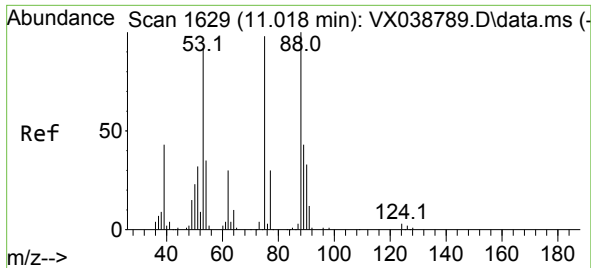
Tgt Ion:152 Resp: 129649
 Ion Ratio Lower Upper
 152 100
 115 65.4 43.3 129.9
 150 159.6 0.0 345.0



#76
 1,2,3-Trichloropropane
 Concen: 21.684 ug/l
 RT: 11.079 min Scan# 1639
 Delta R.T. -0.158 min
 Lab File: VX038875.D
 Acq: 17 Nov 2023 13:10

Tgt Ion: 75 Resp: 70143
 Ion Ratio Lower Upper
 75 100
 77 1.2 19.1 57.5#





#81
 trans-1,4-Dichloro-2-butene
 Concen: 48.098 ug/l
 RT: 11.079 min Scan# 10
 Delta R.T. 0.061 min
 Lab File: VX038875.D
 Acq: 17 Nov 2023 13:10

Instrument :
 MSVOA_X
 ClientSampleId :
 TB02-20231107

Tgt Ion: 75 Resp: 70143
 Ion Ratio Lower Upper
 75 100
 53 0.1 90.5 135.7#
 89 0.0 36.9 55.3#

