

Data Path : Z:\voasrv\HPCHEM1\MSVOA_X\Data\VX111723\
 Data File : VX038881.D
 Acq On : 17 Nov 2023 15:29
 Operator : JC/MD
 Sample : 05403-07
 Misc : 5.0mL/MSVOA_X/WATER
 ALS Vial : 15 Sample Multiplier: 1

Instrument :
 MSVOA_X
 ClientSampleId :
 RW8-MW01D1-20231111

Quant Time: Nov 17 22:51:34 2023
 Quant Method : Z:\voasrv\HPCHEM1\MSVOA_X\Method\82X111623W.M
 Quant Title : SW846 8260
 QLast Update : Thu Nov 16 22:59:22 2023
 Response via : Initial Calibration

Compound	R.T.	QIon	Response	Conc	Units	Dev(Min)

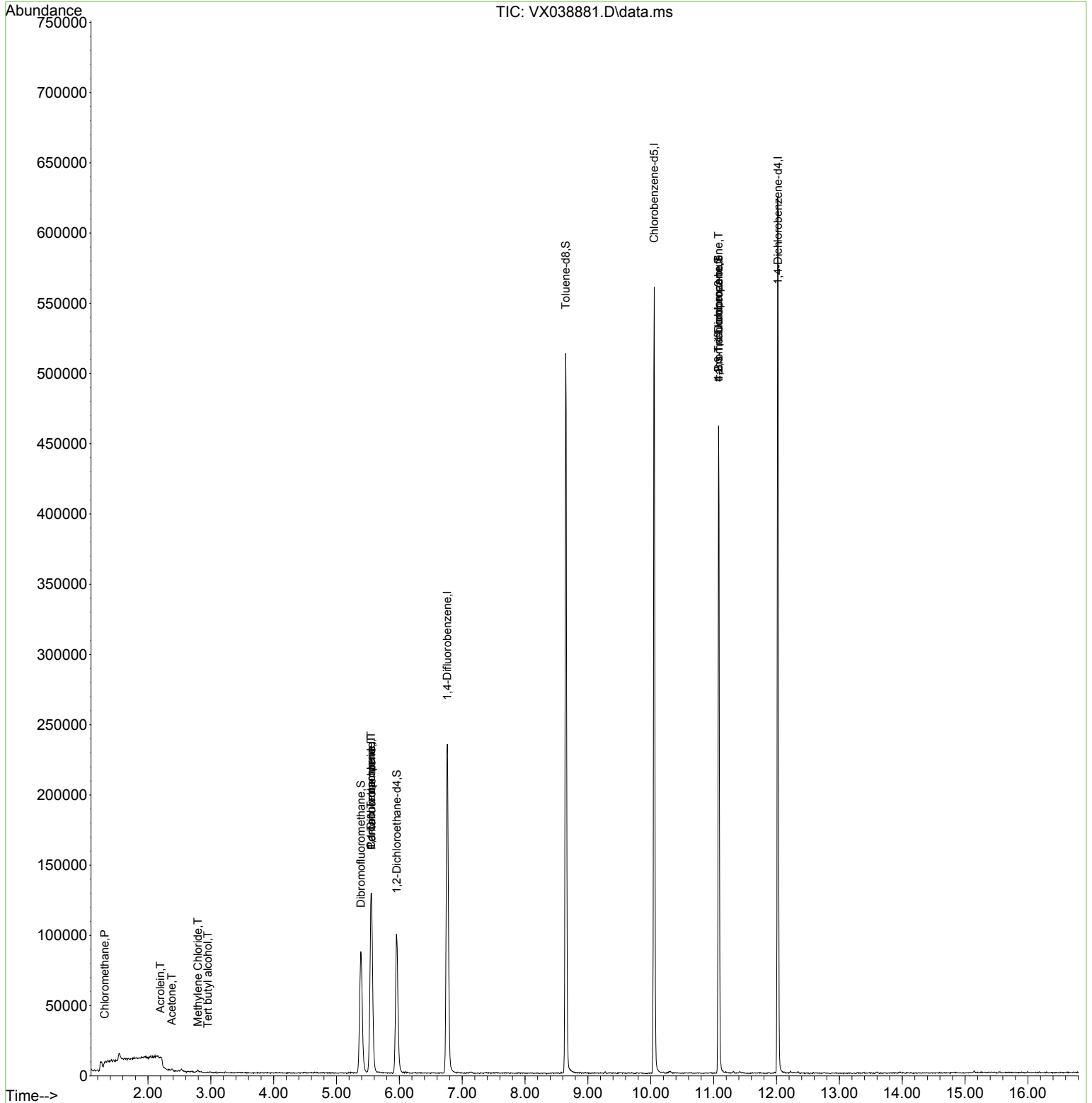
Internal Standards						
1) Pentafluorobenzene	5.556	168	119166	50.000	ug/l	0.00
34) 1,4-Difluorobenzene	6.763	114	240770	50.000	ug/l	0.00
63) Chlorobenzene-d5	10.055	117	249639	50.000	ug/l	0.00
72) 1,4-Dichlorobenzene-d4	12.024	152	126792	50.000	ug/l	0.00
System Monitoring Compounds						
33) 1,2-Dichloroethane-d4	5.958	65	90651	47.210	ug/l	0.00
Spiked Amount	50.000	Range	78 - 117	Recovery	=	94.420%
35) Dibromofluoromethane	5.385	113	77223	44.409	ug/l	0.00
Spiked Amount	50.000	Range	75 - 124	Recovery	=	88.820%
50) Toluene-d8	8.647	98	306765	46.109	ug/l	0.00
Spiked Amount	50.000	Range	92 - 112	Recovery	=	92.220%
62) 4-Bromofluorobenzene	11.079	95	131071	49.214	ug/l	0.00
Spiked Amount	50.000	Range	83 - 123	Recovery	=	98.420%
Target Compounds						
					Qvalue	
3) Chloromethane	1.313	50	373	0.206	ug/l #	43
11) Tert butyl alcohol	2.953	59	177	0.331	ug/l #	78
13) Acrolein	2.197	56	572	2.024	ug/l #	1
16) Acetone	2.380	43	1114	1.090	ug/l	99
20) Methylene Chloride	2.794	84	841	0.456	ug/l #	78
36) 1,1-Dichloropropene	5.550	75	10460	4.197	ug/l #	52
38) Carbon Tetrachloride	5.550	117	13110	5.692	ug/l #	15
76) 1,2,3-Trichloropropane	11.079	75	67946	21.479	ug/l #	39
81) trans-1,4-Dichloro-2-b...	11.079	75	67946	47.642	ug/l #	5

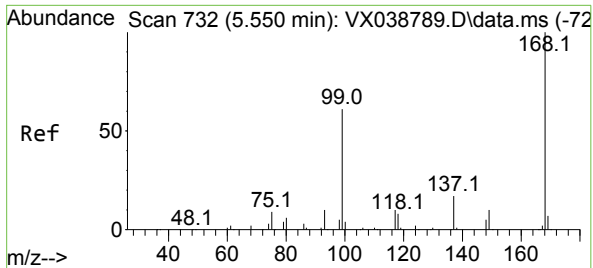
(#) = qualifier out of range (m) = manual integration (+) = signals summed

Data Path : Z:\voasrv\HPCHEM1\MSVOA_X\Data\VX111723\
 Data File : VX038881.D
 Acq On : 17 Nov 2023 15:29
 Operator : JC/MD
 Sample : 05403-07
 Misc : 5.0mL/MSVOA_X/WATER
 ALS Vial : 15 Sample Multiplier: 1

Instrument :
 MSVOA_X
ClientSampleId :
 RW8-MW01D1-20231111

Quant Time: Nov 17 22:51:34 2023
 Quant Method : Z:\voasrv\HPCHEM1\MSVOA_X\Method\82X111623W.M
 Quant Title : SW846 8260
 QLast Update : Thu Nov 16 22:59:22 2023
 Response via : Initial Calibration

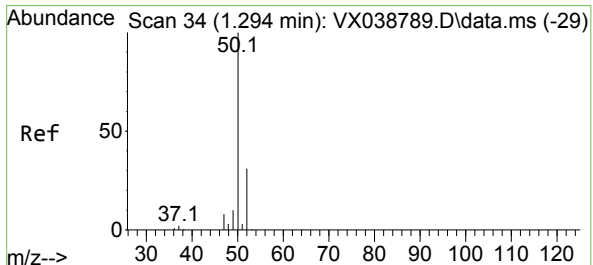
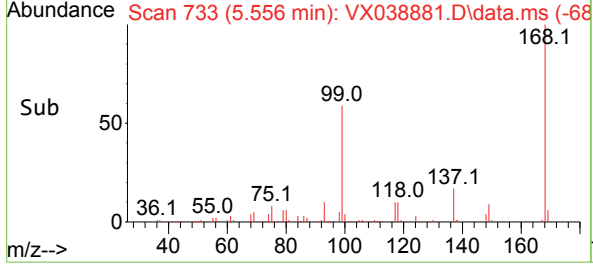
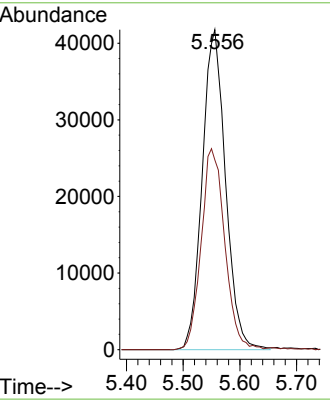
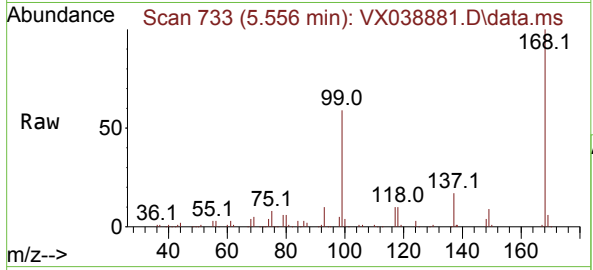




#1
 Pentafluorobenzene
 Concen: 50.000 ug/l
 RT: 5.556 min Scan# 71
 Delta R.T. 0.006 min
 Lab File: VX038881.D
 Acq: 17 Nov 2023 15:29

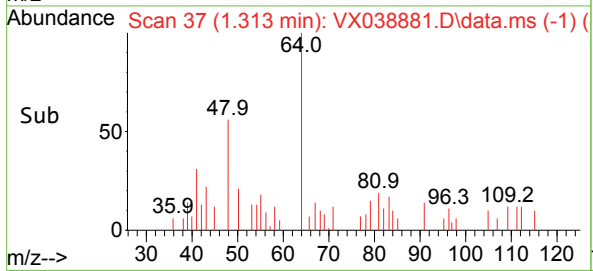
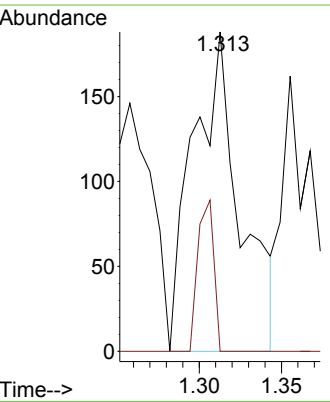
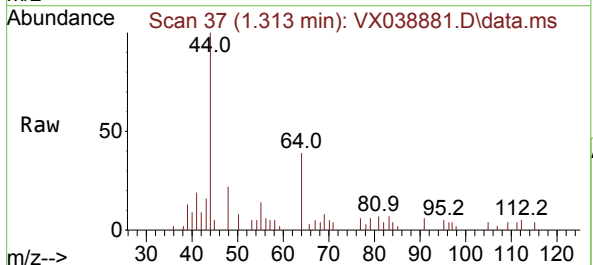
Instrument : MSVOA_X
 ClientSampleId : RW8-MW01D1-20231111

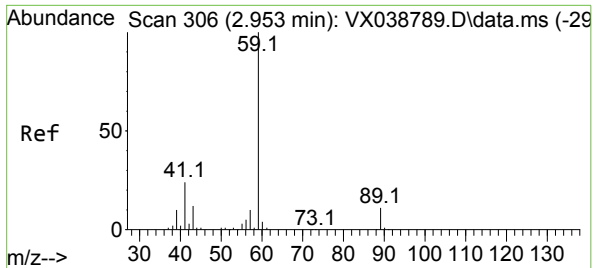
Tgt Ion:168 Resp: 119166
 Ion Ratio Lower Upper
 168 100
 99 59.3 56.6 85.0



#3
 Chloromethane
 Concen: 0.206 ug/l
 RT: 1.313 min Scan# 37
 Delta R.T. 0.019 min
 Lab File: VX038881.D
 Acq: 17 Nov 2023 15:29

Tgt Ion: 50 Resp: 373
 Ion Ratio Lower Upper
 50 100
 52 0.0 25.5 38.3#

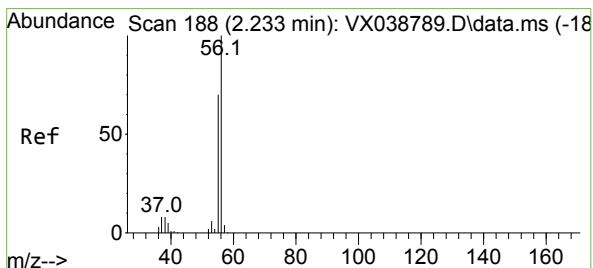
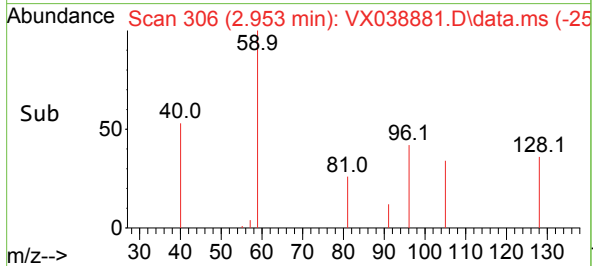
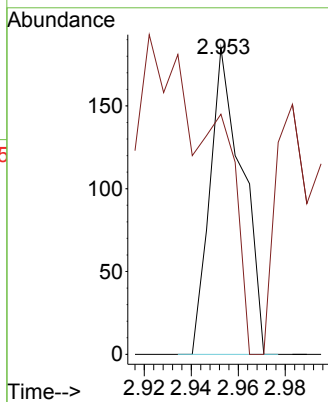
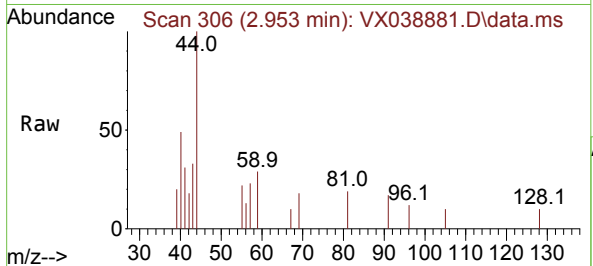




#11
 Tert butyl alcohol
 Concen: 0.331 ug/l
 RT: 2.953 min Scan# 30
 Delta R.T. -0.000 min
 Lab File: VX038881.D
 Acq: 17 Nov 2023 15:29

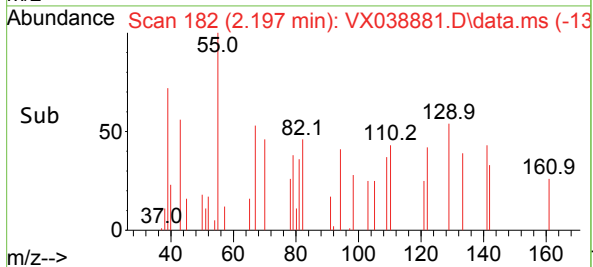
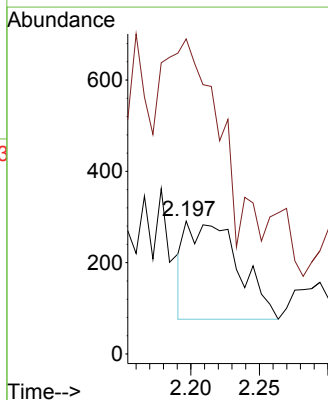
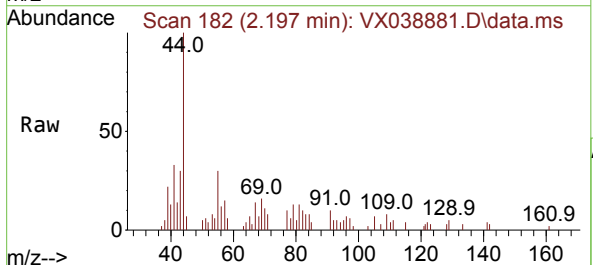
Instrument : MSVOA_X
 ClientSampleId : RW8-MW01D1-20231111

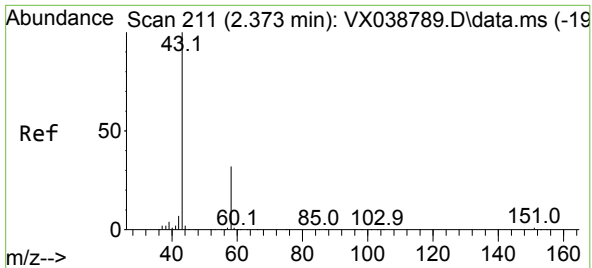
Tgt Ion: 59 Resp: 177
 Ion Ratio Lower Upper
 59 100
 57 0.0 6.0 9.0#



#13
 Acrolein
 Concen: 2.024 ug/l
 RT: 2.197 min Scan# 182
 Delta R.T. -0.037 min
 Lab File: VX038881.D
 Acq: 17 Nov 2023 15:29

Tgt Ion: 56 Resp: 572
 Ion Ratio Lower Upper
 56 100
 55 215.7 57.1 85.7#



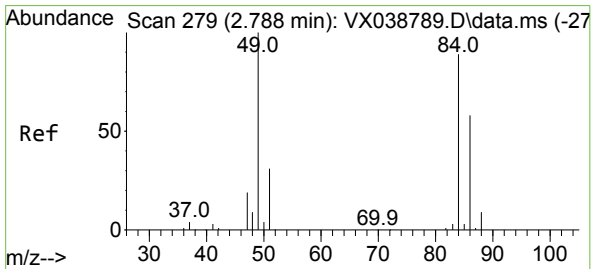
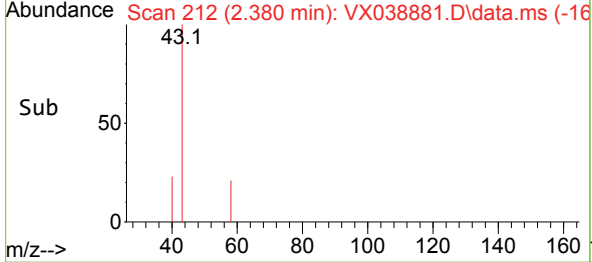
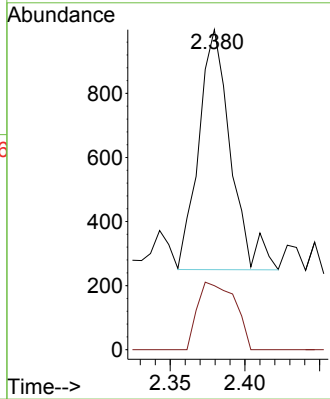
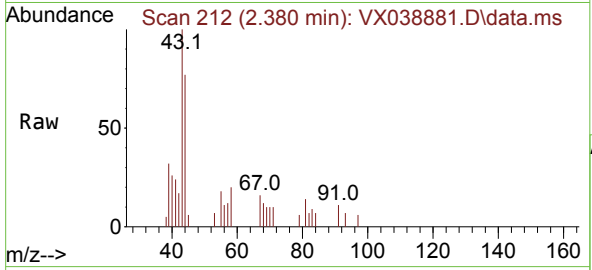


#16
 Acetone
 Concen: 1.090 ug/l
 RT: 2.380 min Scan# 211
 Delta R.T. 0.006 min
 Lab File: VX038881.D
 Acq: 17 Nov 2023 15:29

Instrument : MSVOA_X
 ClientSampleId : RW8-MW01D1-20231111

Tgt Ion: 43 Resp: 1114

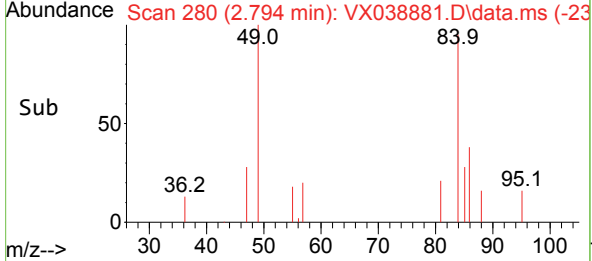
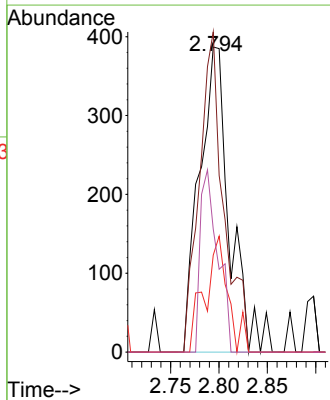
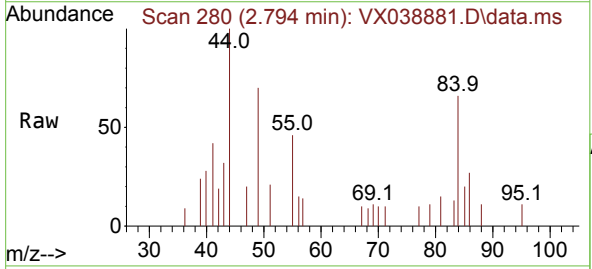
Ion	Ratio	Lower	Upper
43	100		
58	26.7	21.9	32.9

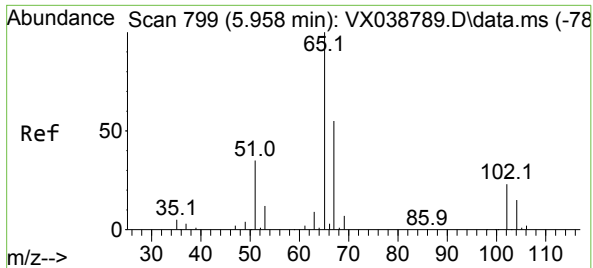


#20
 Methylene Chloride
 Concen: 0.456 ug/l
 RT: 2.794 min Scan# 280
 Delta R.T. 0.006 min
 Lab File: VX038881.D
 Acq: 17 Nov 2023 15:29

Tgt Ion: 84 Resp: 841

Ion	Ratio	Lower	Upper
84	100		
49	104.9	103.6	155.4
51	31.8	33.8	50.6#
86	40.3	49.4	74.0#

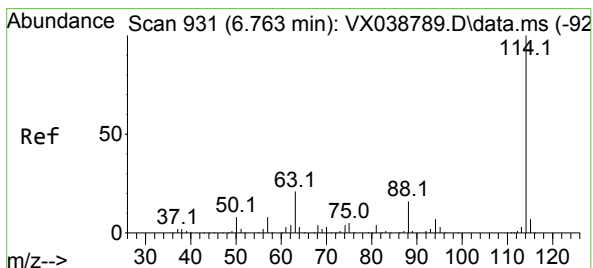
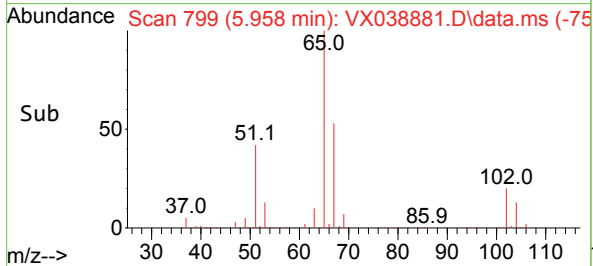
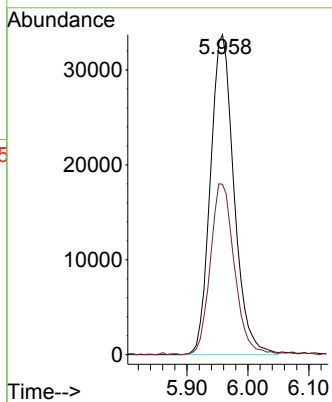
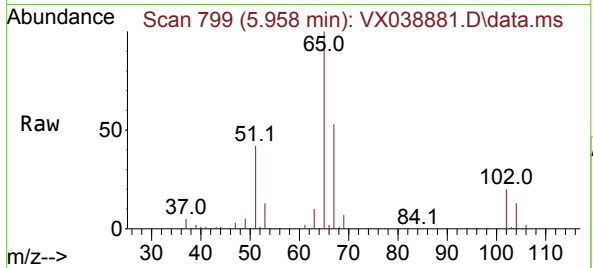




#33
 1,2-Dichloroethane-d4
 Concen: 47.210 ug/l
 RT: 5.958 min Scan# 799
 Delta R.T. -0.000 min
 Lab File: VX038881.D
 Acq: 17 Nov 2023 15:29

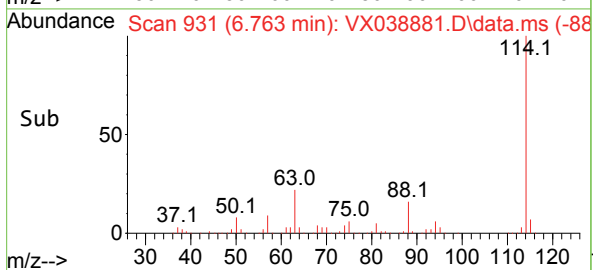
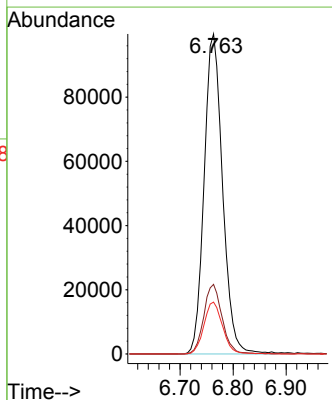
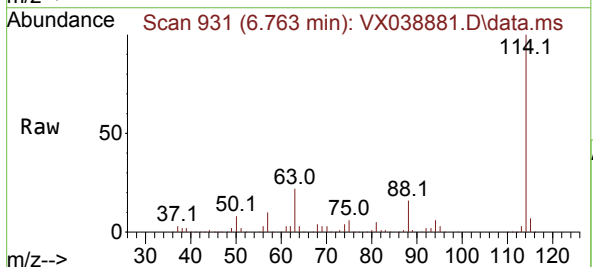
Instrument : MSVOA_X
 ClientSampleId : RW8-MW01D1-20231111

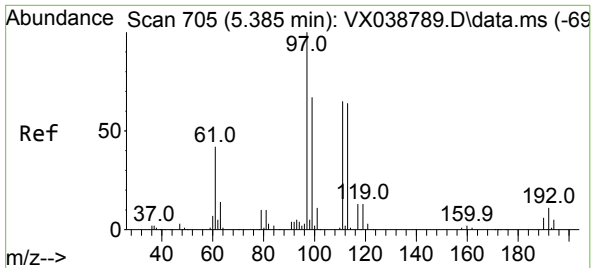
Tgt Ion: 65 Resp: 90651
 Ion Ratio Lower Upper
 65 100
 67 54.4 0.0 100.2



#34
 1,4-Difluorobenzene
 Concen: 50.000 ug/l
 RT: 6.763 min Scan# 931
 Delta R.T. -0.000 min
 Lab File: VX038881.D
 Acq: 17 Nov 2023 15:29

Tgt Ion: 114 Resp: 240770
 Ion Ratio Lower Upper
 114 100
 63 21.7 0.0 45.0
 88 16.2 0.0 36.6

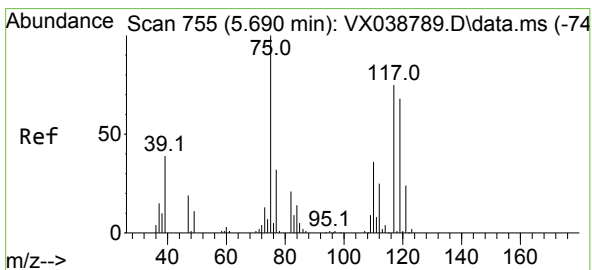
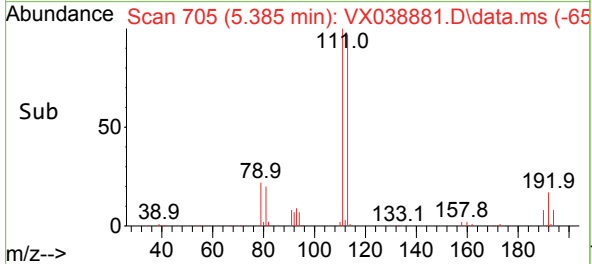
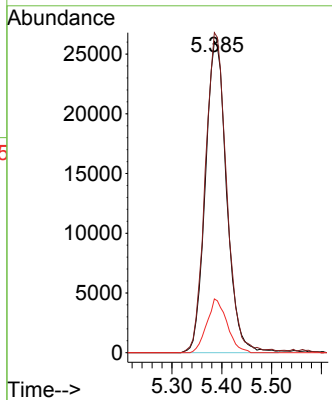
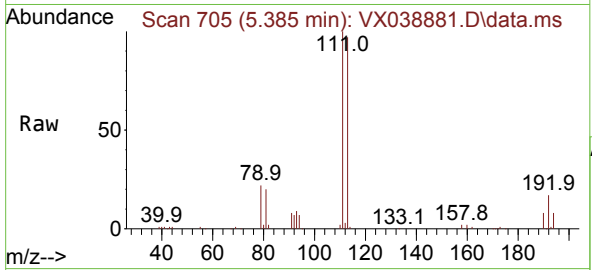




#35
 Dibromofluoromethane
 Concen: 44.409 ug/l
 RT: 5.385 min Scan# 705
 Delta R.T. -0.000 min
 Lab File: VX038881.D
 Acq: 17 Nov 2023 15:29

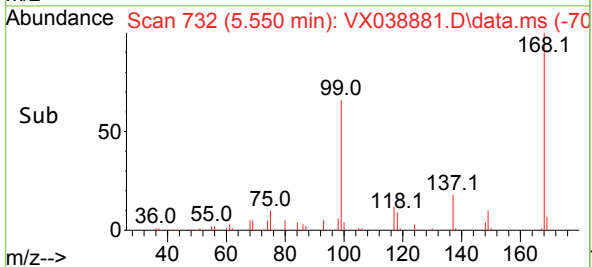
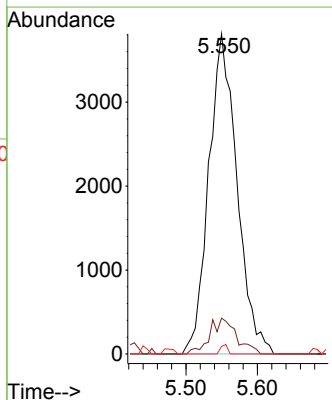
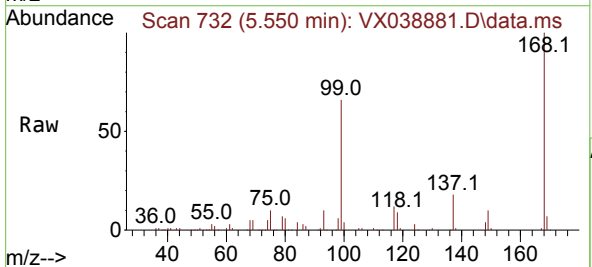
Instrument : MSVOA_X
 ClientSampleId : RW8-MW01D1-20231111

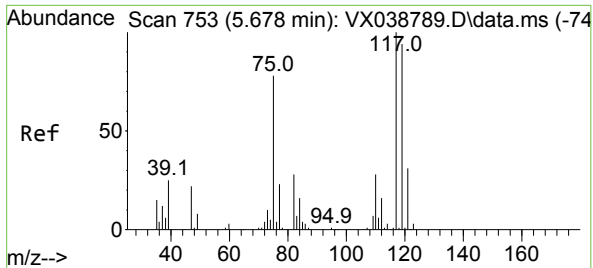
Tgt Ion	Resp	Lower	Upper
113	77223		
113	100		
111	102.7	82.9	124.3
192	16.4	13.3	19.9



#36
 1,1-Dichloropropene
 Concen: 4.197 ug/l
 RT: 5.550 min Scan# 732
 Delta R.T. -0.140 min
 Lab File: VX038881.D
 Acq: 17 Nov 2023 15:29

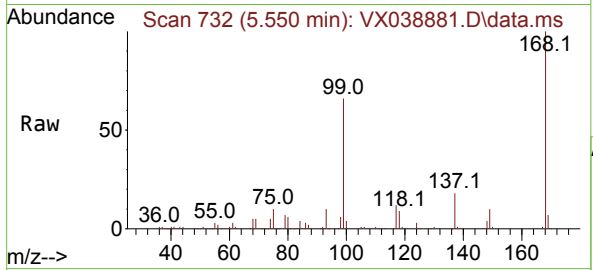
Tgt Ion	Resp	Lower	Upper
75	10460		
75	100		
110	10.6	17.0	50.9#
77	0.7	24.7	37.1#



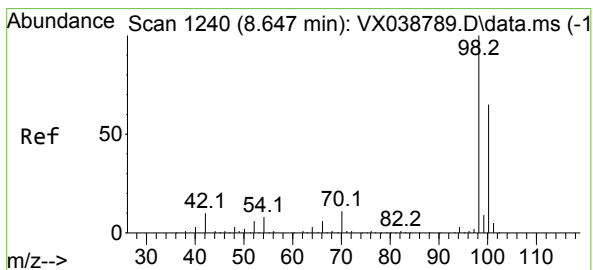
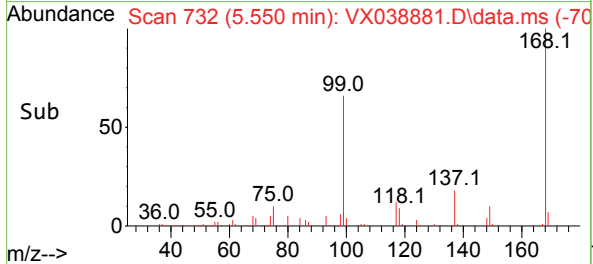
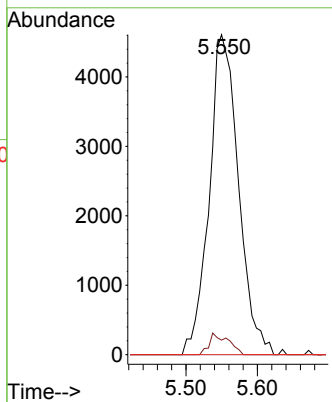


#38
 Carbon Tetrachloride
 Concen: 5.692 ug/l
 RT: 5.550 min Scan# 711
 Delta R.T. -0.128 min
 Lab File: VX038881.D
 Acq: 17 Nov 2023 15:29

Instrument : MSVOA_X
 ClientSampleId : RW8-MW01D1-20231111

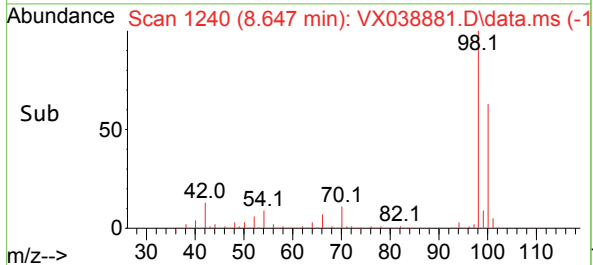
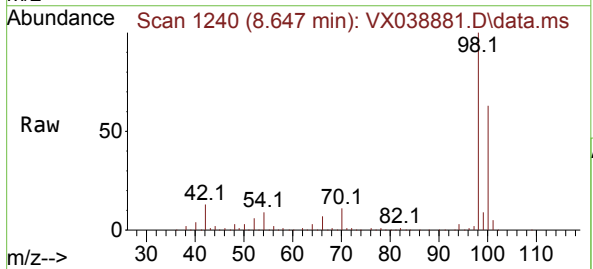
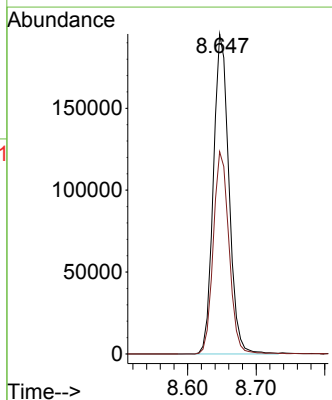


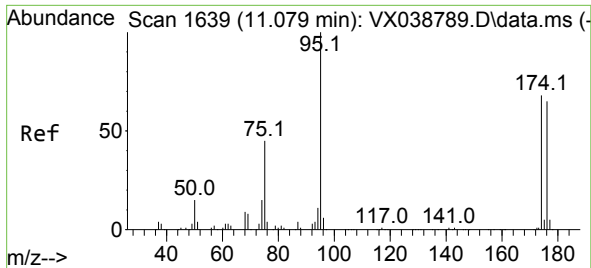
Tgt Ion:117 Resp: 13110
 Ion Ratio Lower Upper
 117 100
 119 4.6 78.2 117.2#
 121 0.0 24.4 36.6#



#50
 Toluene-d8
 Concen: 46.109 ug/l
 RT: 8.647 min Scan# 1240
 Delta R.T. -0.000 min
 Lab File: VX038881.D
 Acq: 17 Nov 2023 15:29

Tgt Ion: 98 Resp: 306765
 Ion Ratio Lower Upper
 98 100
 100 63.9 53.1 79.7

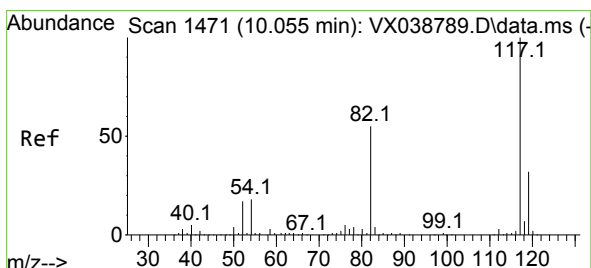
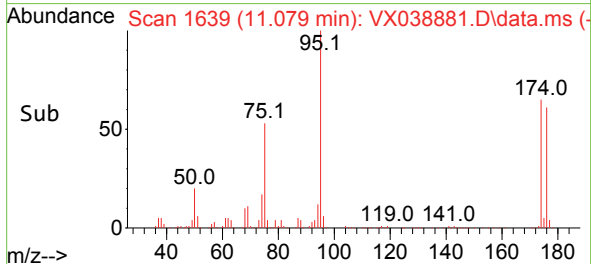
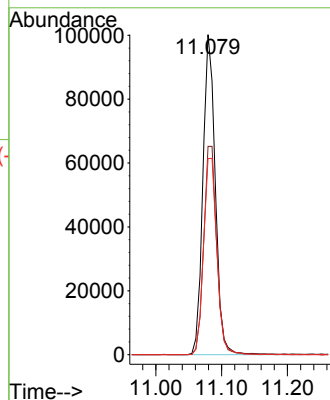
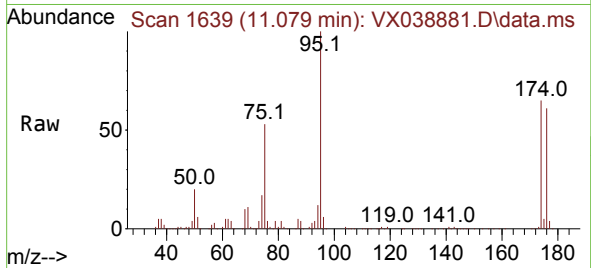




#62
 4-Bromofluorobenzene
 Concen: 49.214 ug/l
 RT: 11.079 min Scan# 1639
 Delta R.T. -0.000 min
 Lab File: VX038881.D
 Acq: 17 Nov 2023 15:29

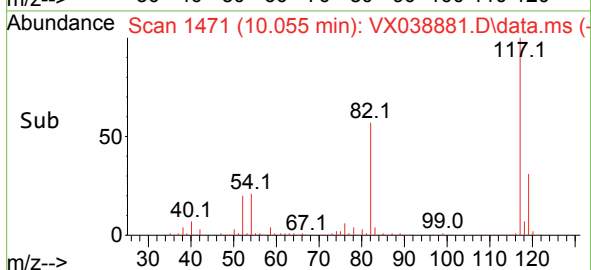
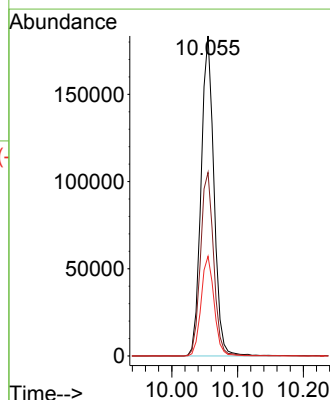
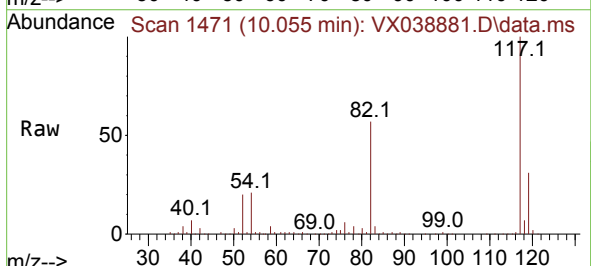
Instrument : MSVOA_X
 ClientSampleId : RW8-MW01D1-20231111

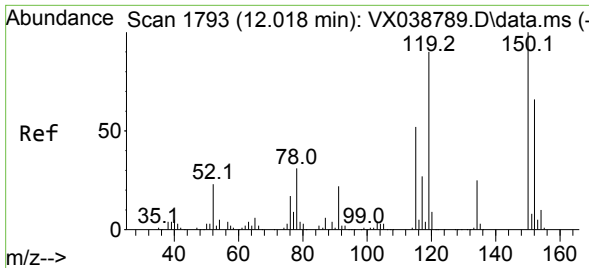
Tgt Ion: 95 Resp: 131071
 Ion Ratio Lower Upper
 95 100
 174 68.5 0.0 135.6
 176 65.9 0.0 131.0



#63
 Chlorobenzene-d5
 Concen: 50.000 ug/l
 RT: 10.055 min Scan# 1471
 Delta R.T. -0.000 min
 Lab File: VX038881.D
 Acq: 17 Nov 2023 15:29

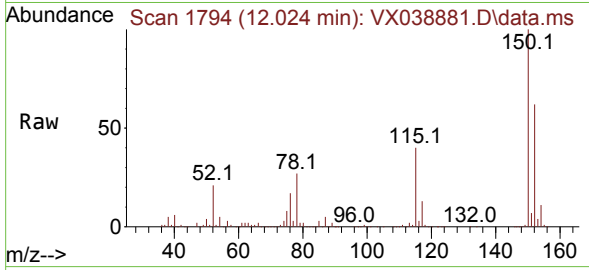
Tgt Ion: 117 Resp: 249639
 Ion Ratio Lower Upper
 117 100
 82 57.3 46.2 69.4
 119 31.2 25.5 38.3



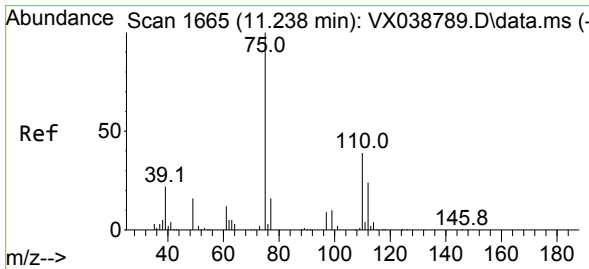
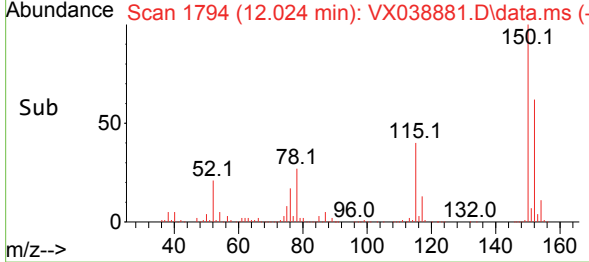
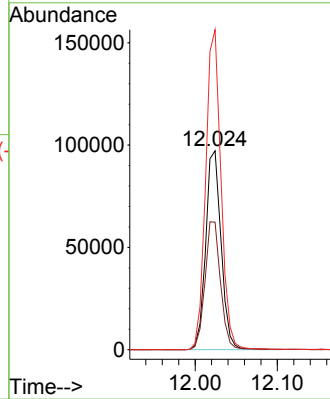


#72
 1,4-Dichlorobenzene-d4
 Concen: 50.000 ug/l
 RT: 12.024 min Scan# 11
 Delta R.T. 0.006 min
 Lab File: VX038881.D
 Acq: 17 Nov 2023 15:29

Instrument :
 MSVOA_X
 ClientSampleId :
 RW8-MW01D1-20231111

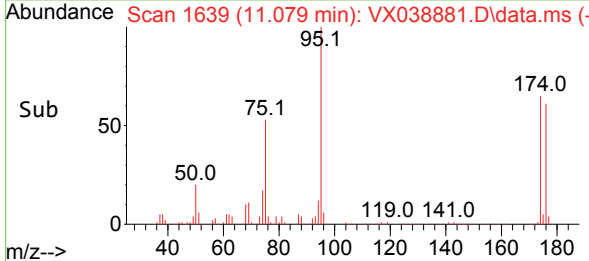
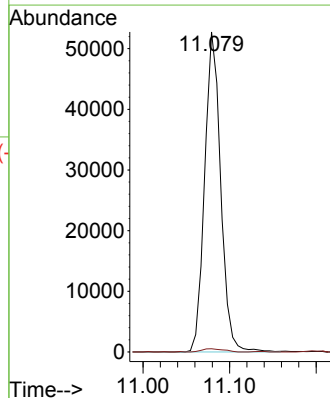
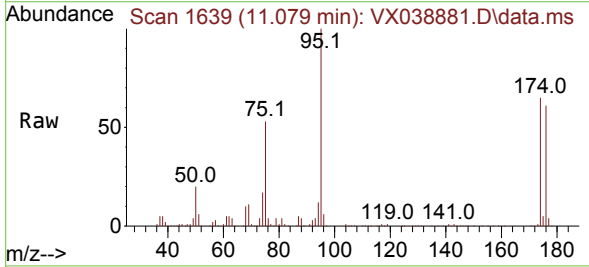


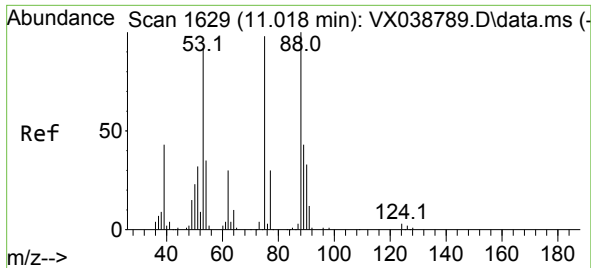
Tgt Ion:152 Resp: 126792
 Ion Ratio Lower Upper
 152 100
 115 65.1 43.3 129.9
 150 159.4 0.0 345.0



#76
 1,2,3-Trichloropropane
 Concen: 21.479 ug/l
 RT: 11.079 min Scan# 1639
 Delta R.T. -0.159 min
 Lab File: VX038881.D
 Acq: 17 Nov 2023 15:29

Tgt Ion: 75 Resp: 67946
 Ion Ratio Lower Upper
 75 100
 77 1.4 19.1 57.5#





#81
 trans-1,4-Dichloro-2-butene
 Concen: 47.642 ug/l
 RT: 11.079 min Scan# 1
 Delta R.T. 0.061 min
 Lab File: VX038881.D
 Acq: 17 Nov 2023 15:29

Instrument :
 MSVOA_X
 ClientSampleId :
 RW8-MW01D1-20231111

Tgt Ion: 75 Resp: 67946

Ion	Ratio	Lower	Upper
75	100		
53	0.0	90.5	135.7#
89	0.0	36.9	55.3#

