

Data Path : Z:\voasrv\HPCHEM1\MSVOA_X\Data\VX111723\
 Data File : VX038879.D
 Acq On : 17 Nov 2023 14:43
 Operator : JC/MD
 Sample : 05403-10
 Misc : 5.0mL/MSVOA_X/WATER
 ALS Vial : 13 Sample Multiplier: 1

Instrument :
 MSVOA_X
 ClientSampleId :
 RW9-MW01D2-20231112

Integration Parameters: RTEINT.P

Integrator: RTE
 Smoothing : ON Filtering: 5
 Sampling : 1 Min Area: 3 % of largest Peak
 Start Thrs: 0.2 Max Peaks: 100
 Stop Thrs : 0 Peak Location: TOP

If leading or trailing edge < 100 prefer < Baseline drop else tangent >
 Peak separation: 5

Method : Z:\voasrv\HPCHEM1\MSVOA_X\Method\82X111623W.M
 Title : SW846 8260

Signal : TIC: VX038879.D\data.ms

peak #	R.T. min	first scan	max scan	last scan	PK TY	peak height	corr. area	corr. % max.	% of total
1	1.239	22	25	32	rBV2	6652	15953	2.00%	0.362%
2	1.319	32	38	41	rBV7	4489	9831	1.23%	0.223%
3	5.019	636	645	652	rBV4	3651	11205	1.40%	0.254%
4	5.385	693	705	719	rBV2	84037	248793	31.19%	5.650%
5	5.550	722	732	744	rVV	126479	361301	45.29%	8.205%
6	5.958	788	799	814	rBV	93369	256330	32.13%	5.821%
7	6.763	922	931	948	rBV	231758	559409	70.12%	12.704%
8	8.647	1233	1240	1258	rBV	499726	797765	100.00%	18.117%
9	10.055	1465	1471	1484	rVB	545484	753954	94.51%	17.122%
10	11.079	1634	1639	1652	rBV	455545	597244	74.86%	13.563%
11	12.024	1788	1794	1802	rBV	594826	791552	99.22%	17.976%

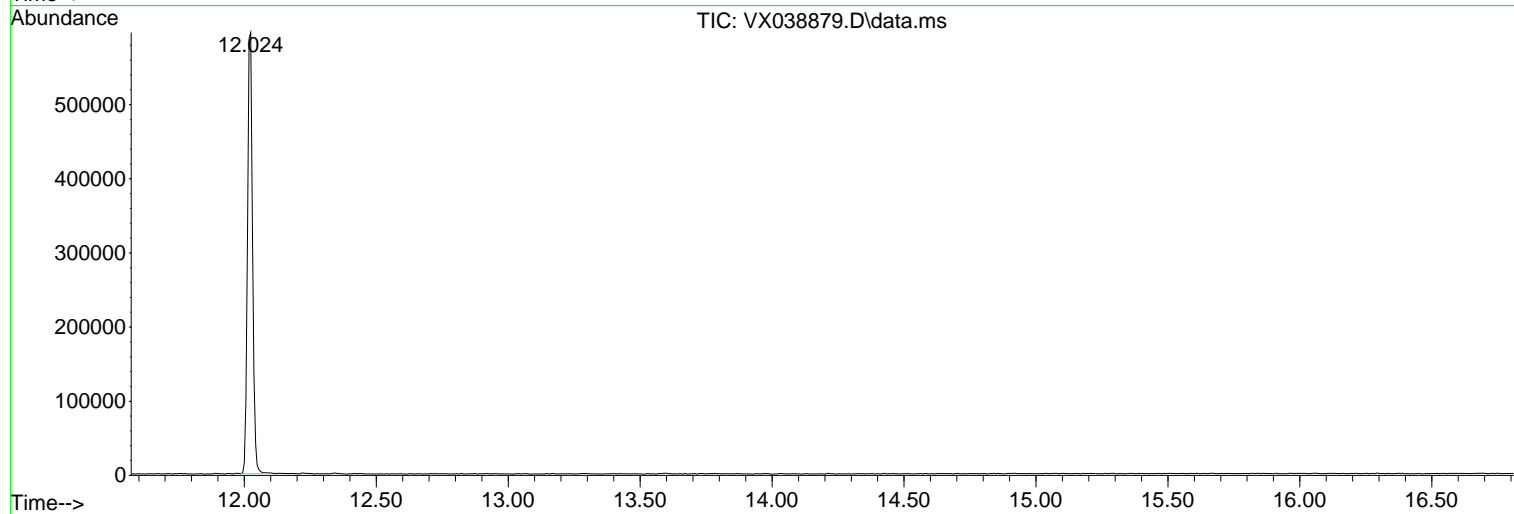
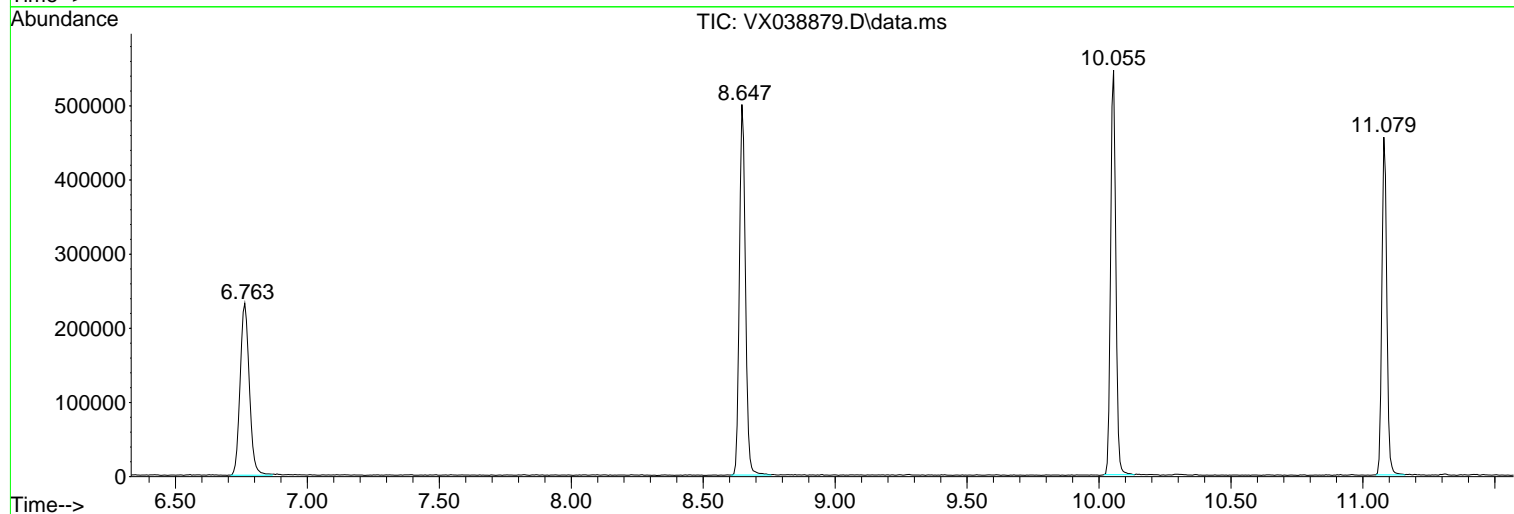
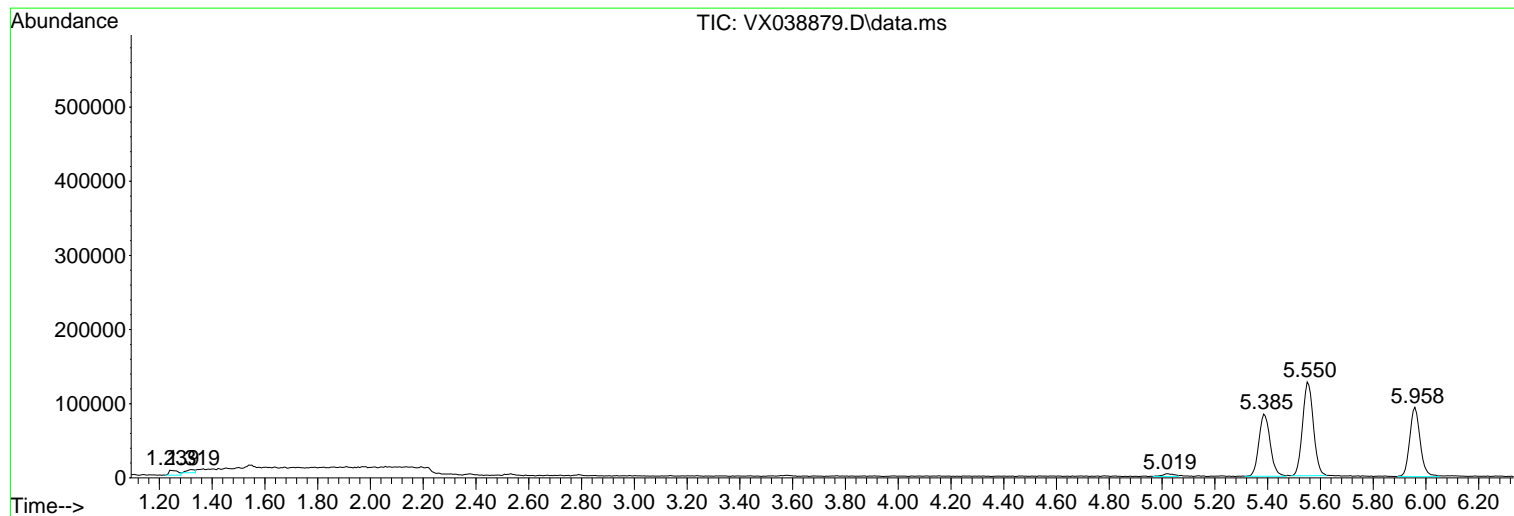
Sum of corrected areas: 4403337

Data Path : Z:\voasrv\HPCHEM1\MSVOA_X\Data\VX111723\
Data File : VX038879.D
Acq On : 17 Nov 2023 14:43
Operator : JC/MD
Sample : 05403-10
Misc : 5.0mL/MSVOA_X/WATER
ALS Vial : 13 Sample Multiplier: 1

Instrument :
MSVOA_X
ClientSampleId :
RW9-MW01D2-20231112

Quant Method : Z:\voasrv\HPCHEM1\MSVOA_X\Method\82X111623W.M
Quant Title : SW846 8260

TIC Library : C:\Database\NIST20.L
TIC Integration Parameters: LSCINT.P



Library Search Compound Report

Data Path : Z:\voasrv\HPCHEM1\MSVOA_X\Data\VX111723\
Data File : VX038879.D
Acq On : 17 Nov 2023 14:43
Operator : JC/MD
Sample : 05403-10
Misc : 5.0mL/MSVOA_X/WATER
ALS Vial : 13 Sample Multiplier: 1

Instrument :
MSVOA_X
ClientSampleId :
RW9-MW01D2-20231112

Quant Method : Z:\voasrv\HPCHEM1\MSVOA_X\Method\82X111623W.M
Quant Title : SW846 8260

TIC Library : C:\Database\NIST20.L
TIC Integration Parameters: LSCINT.P

No Library Search Compounds Detected

Data Path : Z:\voasrv\HPCHEM1\MSVOA_X\Data\VX111723\
Data File : VX038879.D
Acq On : 17 Nov 2023 14:43
Operator : JC/MD
Sample : 05403-10
Misc : 5.0mL/MSVOA_X/WATER
ALS Vial : 13 Sample Multiplier: 1

Instrument :
MSVOA_X
ClientSampleId :
RW9-MW01D2-20231112

Quant Method : Z:\voasrv\HPCHEM1\MSVOA_X\Method\82X111623W.M
Quant Title : SW846 8260

TIC Library : C:\Database\NIST20.L
TIC Integration Parameters: LSCINT.P

TIC Top Hit name	RT	EstConc	Units	Response	#	RT	Resp	Conc
------------------	----	---------	-------	----------	---	----	------	------
