

Data Path : Z:\VOASRV\HPCHEM1\MSVOA X\DATA\VX111920\  
 Data File : VX019463.D  
 Acq On : 18 Nov 2020 20:09  
 Operator : JC/MD  
 Sample : L4787-02  
 Misc : 5.0mL/MSVOA X/WATER  
 ALS Vial : 14 Sample Multiplier: 1

Instrument :  
 MSVOA\_X  
 ClientSampleId :  
 BP-VPB178-GW-663-665

Quant Time: Nov 19 03:16:15 2020  
 Quant Method : Z:\VOASRV\HPCHEM1\MSVOA\_X\METHOD\82X111920W.M  
 Quant Title : SW846 8260  
 QLast Update : Wed Nov 18 16:47:30 2020  
 Response via : Initial Calibration

Internal Standards	R.T.	QIon	Response	Conc	Units	Dev(Min)
1) Pentafluorobenzene	5.62	168	250449	50.00	ug/l	0.00
34) 1,4-Difluorobenzene	6.83	114	420618	50.00	ug/l	0.00
63) Chlorobenzene-d5	10.10	117	384969	50.00	ug/l	0.00
72) 1,4-Dichlorobenzene-d4	12.06	152	165443	50.00	ug/l	0.00

## System Monitoring Compounds

33) 1,2-Dichloroethane-d4	6.02	65	182699	46.56	ug/l	0.00
Spiked Amount	50.000		Recovery	=	93.12%	
35) Dibromofluoromethane	5.46	113	130699	47.22	ug/l	0.00
Spiked Amount	50.000		Recovery	=	94.44%	
50) Toluene-d8	8.70	98	519661	48.32	ug/l	0.00
Spiked Amount	50.000		Recovery	=	96.64%	
62) 4-Bromofluorobenzene	11.12	95	182593	46.21	ug/l	0.00
Spiked Amount	50.000		Recovery	=	92.42%	

## Target Compounds

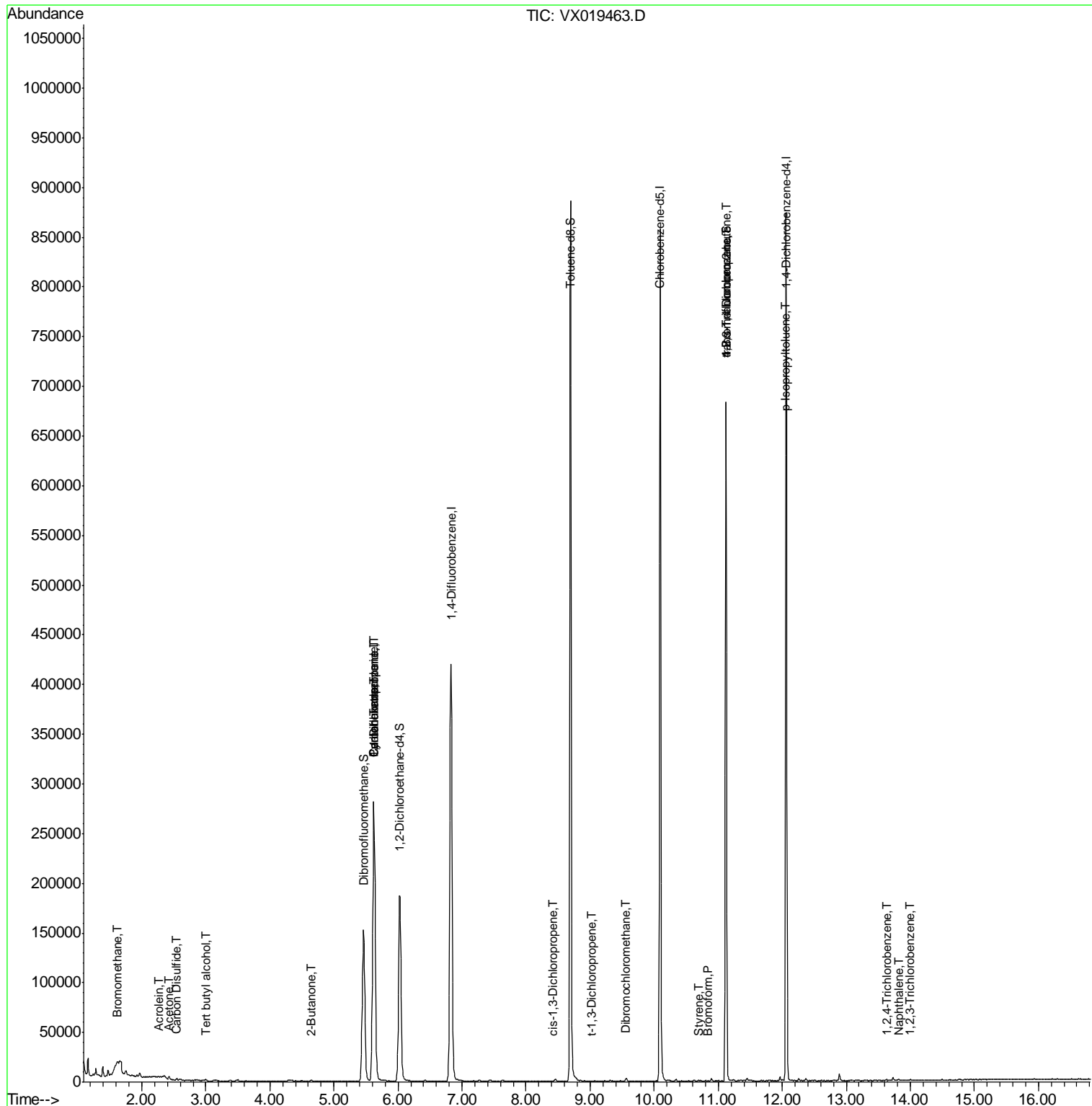
					Qvalue	
5) Bromomethane	1.62	94	676	0.407	ug/l	96
6) Chloroethane	1.68	64	108	Below	Cal #	1
11) Tert butyl alcohol	2.99	59	786	1.078	ug/l #	72
13) Acrolein	2.28	56	338	0.647	ug/l	95
16) Acetone	2.43	43	3734	2.460	ug/l	99
17) Carbon Disulfide	2.54	76	2067	0.282	ug/l	97
25) 2-Butanone	4.65	43	1497	0.661	ug/l	96
31) Cyclohexane	5.62	56	5933	1.204	ug/l #	1
36) 1,1-Dichloropropene	5.62	75	22075	5.236	ug/l #	51
38) Carbon Tetrachloride	5.63	117	27675	6.655	ug/l #	17
53) t-1,3-Dichloropropene	9.02	75	183	1.861	ug/l #	43
54) cis-1,3-Dichloropropene	8.41	75	102	1.503	ug/l #	29
60) Dibromochloromethane	9.56	129	83	1.645	ug/l #	11
70) Styrene	10.69	104	264	2.157	ug/l	98
71) Bromoform	10.84	173	81	3.715	ug/l #	29
76) 1,2,3-Trichloropropane	11.12	75	96109	24.366	ug/l #	37
81) trans-1,4-Dichloro-2-buten	11.12	75	96109	64.604	ug/l #	9
86) p-Isopropyltoluene	12.05	119	407	1.640	ug/l #	1
93) 1,2,4-Trichlorobenzene	13.63	180	366	2.852	ug/l #	72
95) Naphthalene	13.82	128	960	2.388	ug/l #	90
96) 1,2,3-Trichlorobenzene	14.01	180	285	2.516	ug/l	90

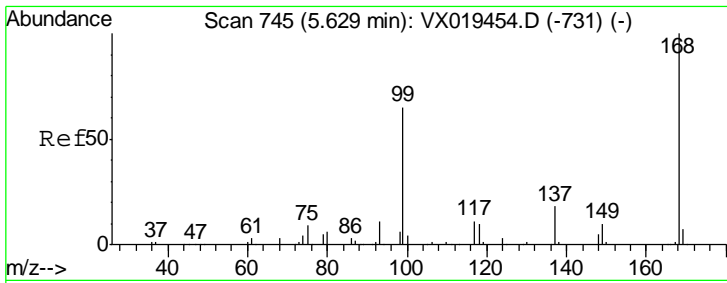
(#) = qualifier out of range (m) = manual integration (+) = signals summed

Data Path : Z:\VOASRV\HPCHEM1\MSVOA X\DATA\VX111920\  
 Data File : VX019463.D  
 Acq On : 18 Nov 2020 20:09  
 Operator : JC/MD  
 Sample : L4787-02  
 Misc : 5.0mL/MSVOA X/WATER  
 ALS Vial : 14 Sample Multiplier: 1

Instrument :  
 MSVOA\_X  
 ClientSampled :  
 BP-VPB178-GW-663-665

Quant Time: Nov 19 03:16:15 2020  
 Quant Method : Z:\VOASRV\HPCHEM1\MSVOA\_X\METHOD\82X111920W.M  
 Quant Title : SW846 8260  
 QLast Update : Wed Nov 18 16:47:30 2020  
 Response via : Initial Calibration

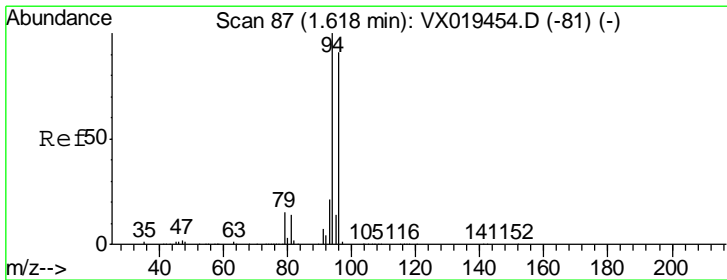
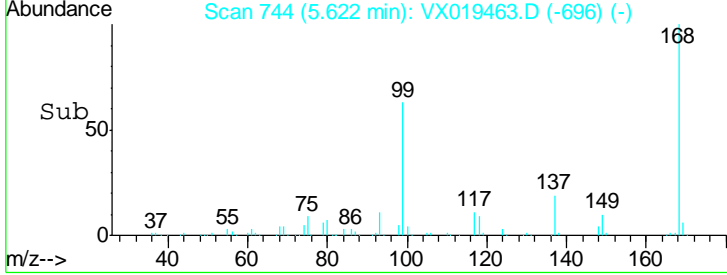
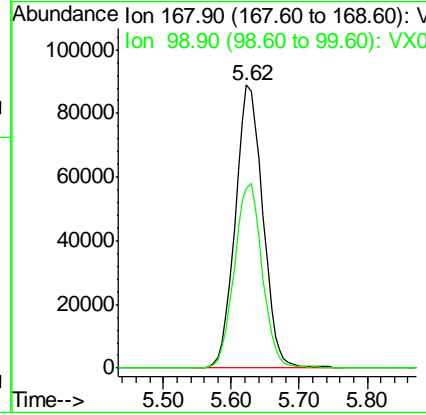
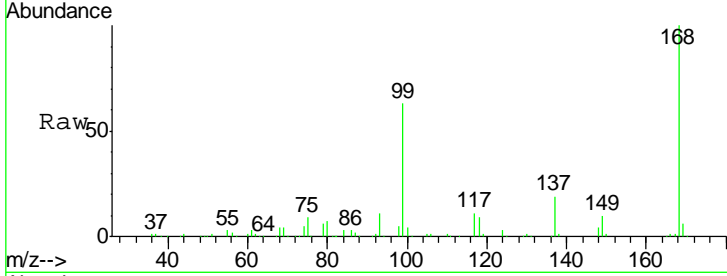




#1  
 Pentafluorobenzene  
 Concen: 50.000 ug/l  
 RT: 5.62 min Scan# 744  
 Delta R.T. -0.01 min  
 Lab File: VX019463.D  
 Acq: 18 Nov 2020 20:09

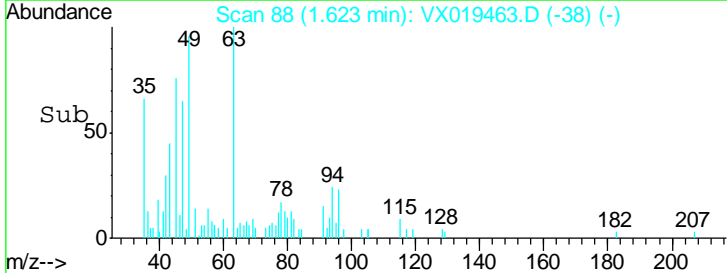
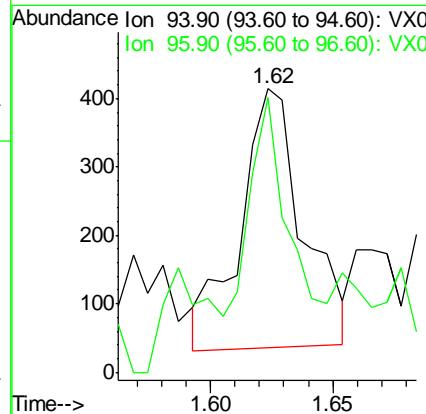
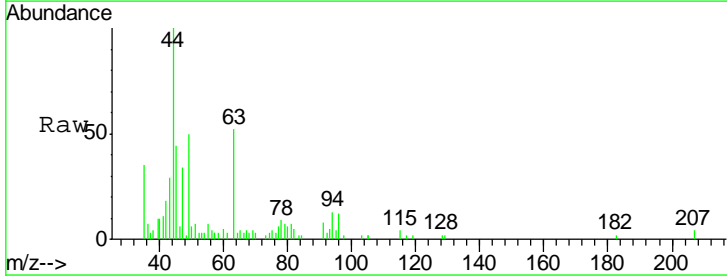
Instrument :  
 MSVOA\_X  
 ClientSampled :  
 BP-VPB178-GW-663-665

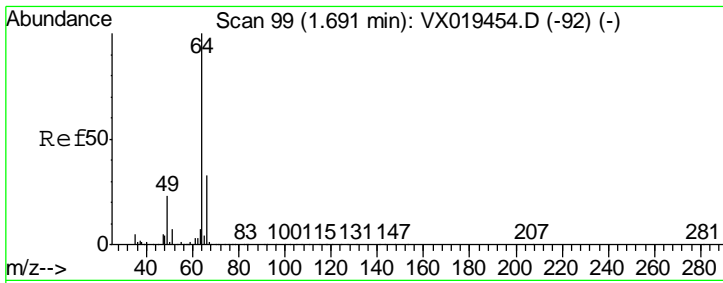
Tgt Ion: 168 Resp: 250449  
 Ion Ratio Lower Upper  
 168 100  
 99 63.4 52.1 78.1



#5  
 Bromomethane  
 Concen: 0.407 ug/l  
 RT: 1.62 min Scan# 88  
 Delta R.T. 0.01 min  
 Lab File: VX019463.D  
 Acq: 18 Nov 2020 20:09

Tgt Ion: 94 Resp: 676  
 Ion Ratio Lower Upper  
 94 100  
 96 94.7 72.4 108.6

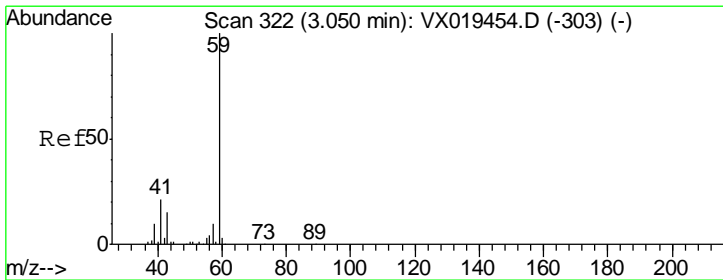
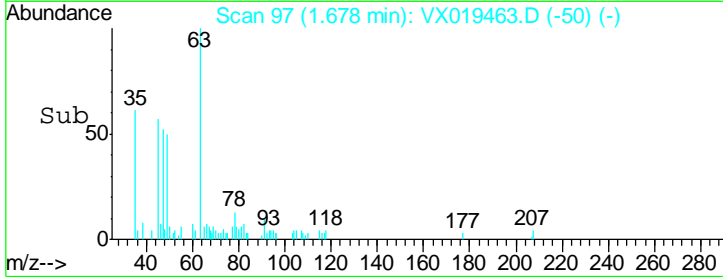
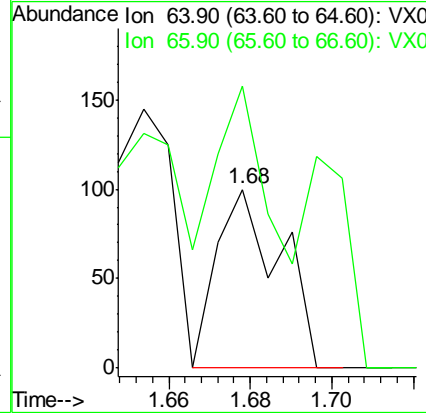
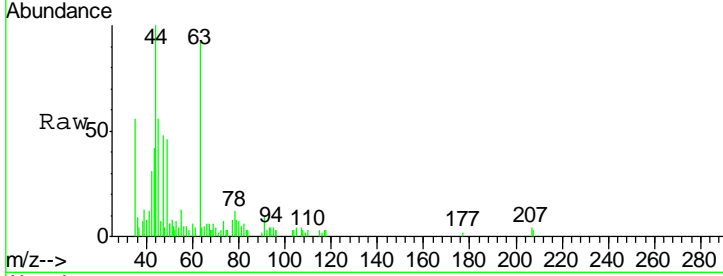




#6  
 Chloroethane  
 Concen: Below Cal  
 RT: 1.68 min Scan# 97  
 Delta R.T. -0.01 min  
 Lab File: VX019463.D  
 Acq: 18 Nov 2020 20:09

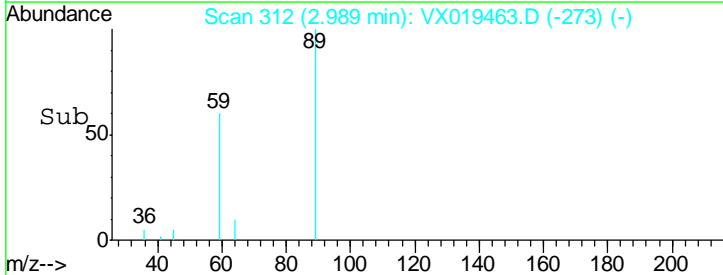
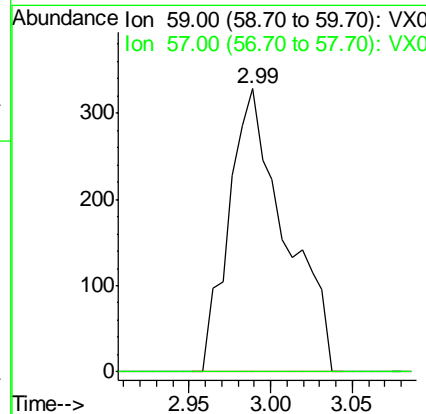
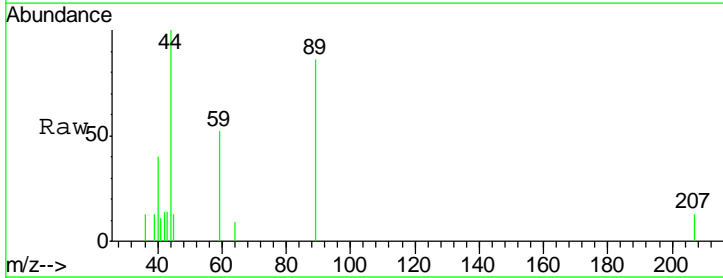
Instrument :  
 MSVOA\_X  
 ClientSampled :  
 BP-VPB178-GW-663-665

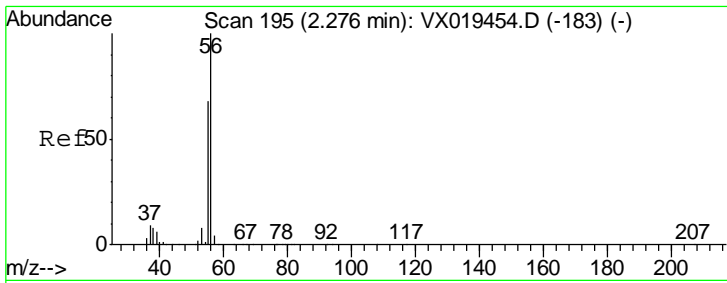
Tgt Ion: 64 Resp: 108  
 Ion Ratio Lower Upper  
 64 100  
 66 92.0 26.1 39.1#



#11  
 Tert butyl alcohol  
 Concen: 1.078 ug/l  
 RT: 2.99 min Scan# 312  
 Delta R.T. -0.06 min  
 Lab File: VX019463.D  
 Acq: 18 Nov 2020 20:09

Tgt Ion: 59 Resp: 786  
 Ion Ratio Lower Upper  
 59 100  
 57 0.0 8.4 12.6#

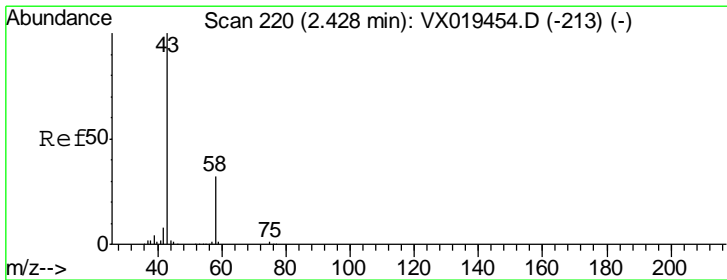
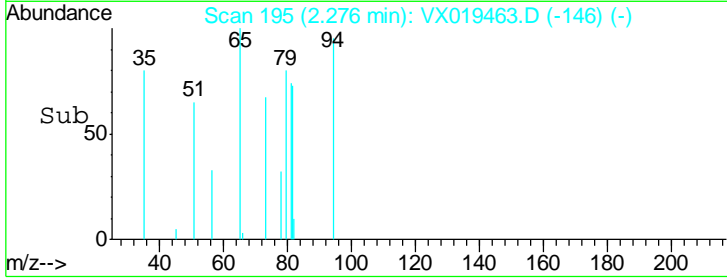
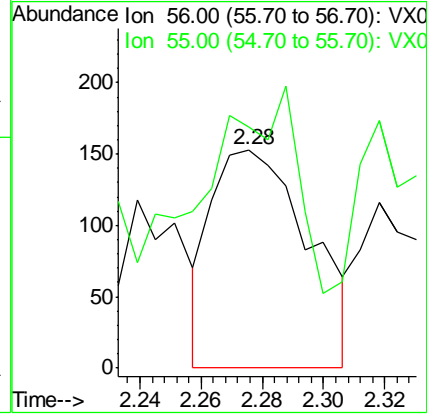
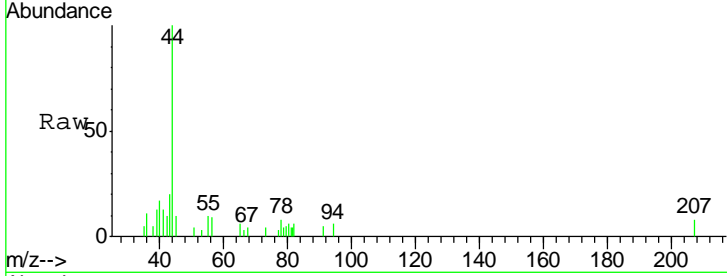




#13  
 Acrolein  
 Concen: 0.647 ug/l  
 RT: 2.28 min Scan# 195  
 Delta R.T. -0.00 min  
 Lab File: VX019463.D  
 Acq: 18 Nov 2020 20:09

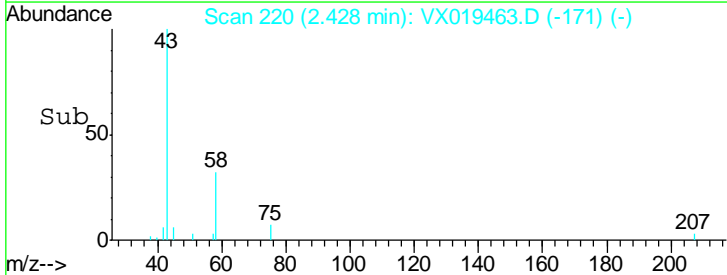
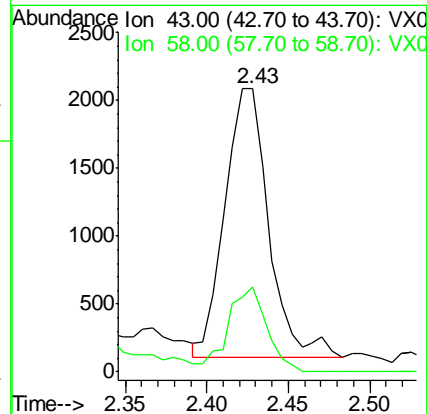
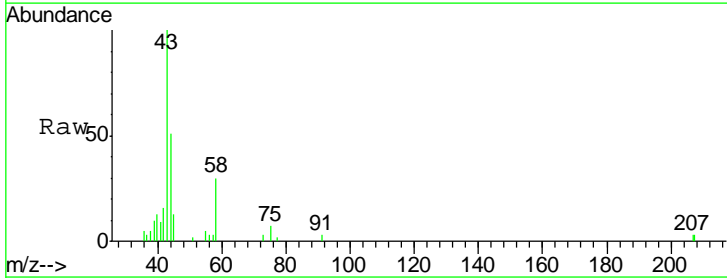
Instrument : MSVOA\_X  
 ClientSampled : BP-VPB178-GW-663-665

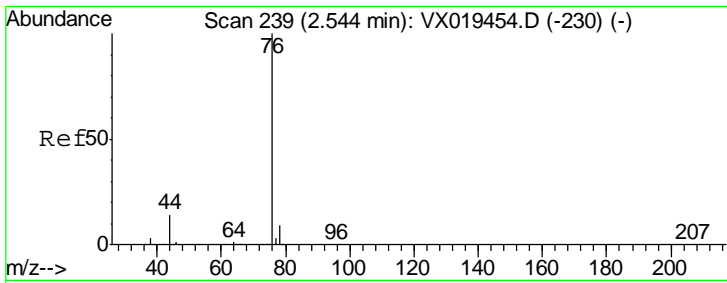
Tgt Ion	Resp	Lower	Upper
56	100		
55	74.3	55.9	83.9



#16  
 Acetone  
 Concen: 2.460 ug/l  
 RT: 2.43 min Scan# 220  
 Delta R.T. -0.00 min  
 Lab File: VX019463.D  
 Acq: 18 Nov 2020 20:09

Tgt Ion	Resp	Lower	Upper
43	100		
58	31.4	25.4	38.0

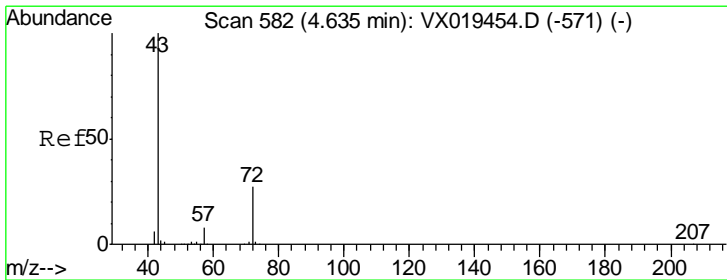
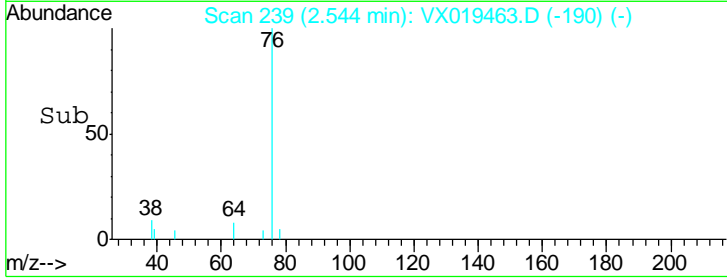
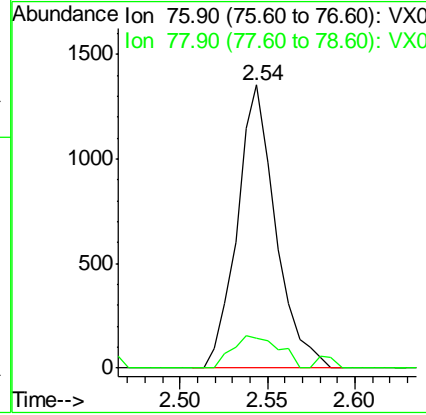
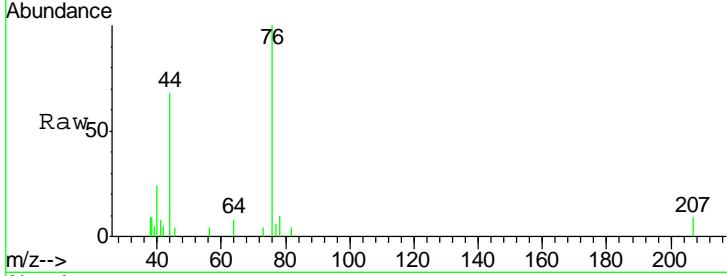




#17  
 Carbon Disulfide  
 Concen: 0.282 ug/l  
 RT: 2.54 min Scan# 239  
 Delta R.T. -0.00 min  
 Lab File: VX019463.D  
 Acq: 18 Nov 2020 20:09

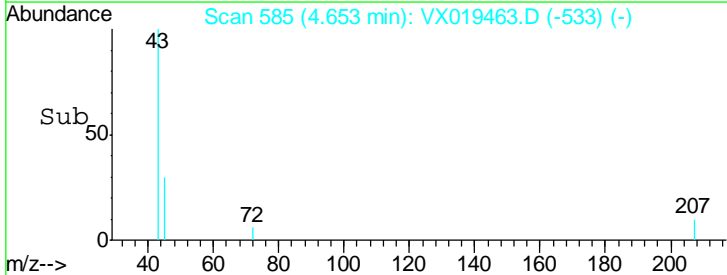
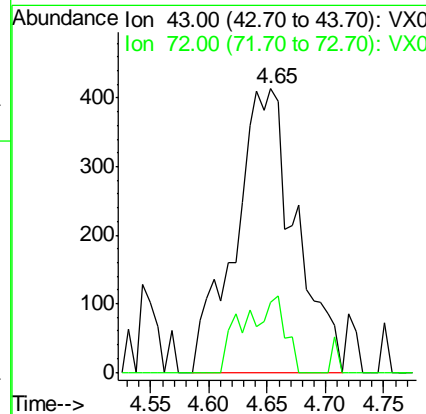
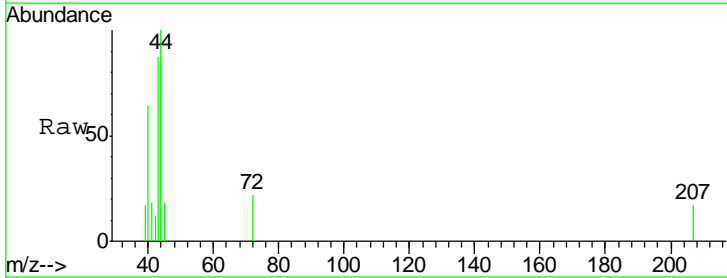
Instrument :  
 MSVOA\_X  
 ClientSampled :  
 BP-VPB178-GW-663-665

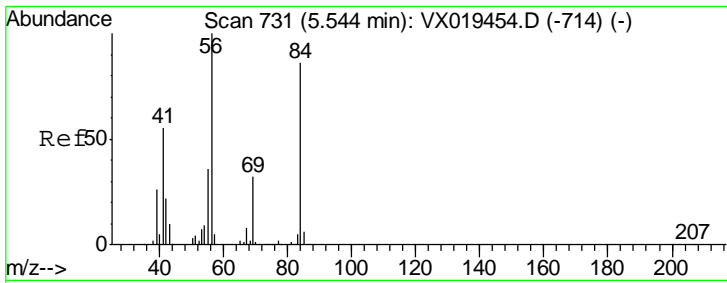
Tgt Ion	Resp	Lower	Upper
76	2067		
78	10.5	7.4	11.2



#25  
 2-Butanone  
 Concen: 0.661 ug/l  
 RT: 4.65 min Scan# 585  
 Delta R.T. 0.02 min  
 Lab File: VX019463.D  
 Acq: 18 Nov 2020 20:09

Tgt Ion	Resp	Lower	Upper
43	1497		
72	24.7	21.4	32.0

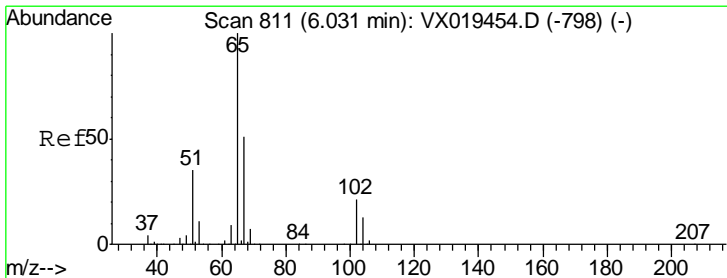
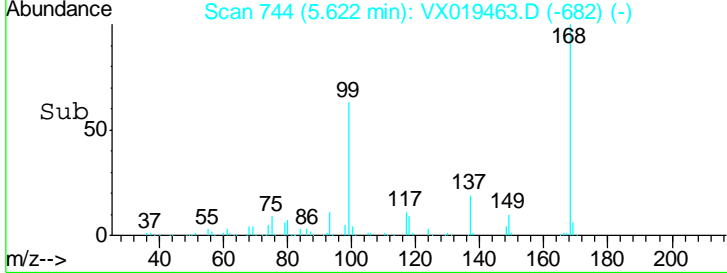
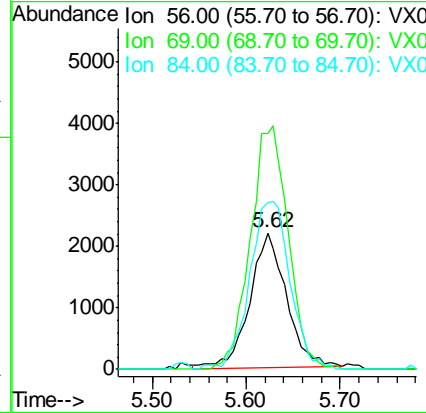
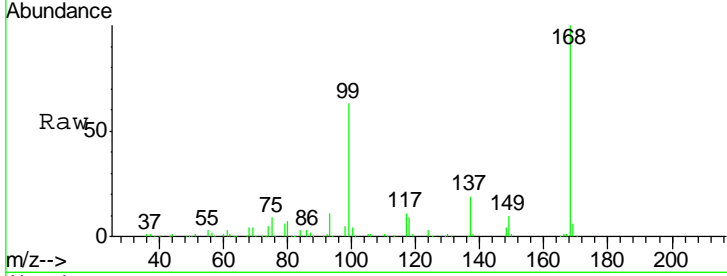




#31  
 Cyclohexane  
 Concen: 1.204 ug/l  
 RT: 5.62 min Scan# 744  
 Delta R.T. 0.08 min  
 Lab File: VX019463.D  
 Acq: 18 Nov 2020 20:09

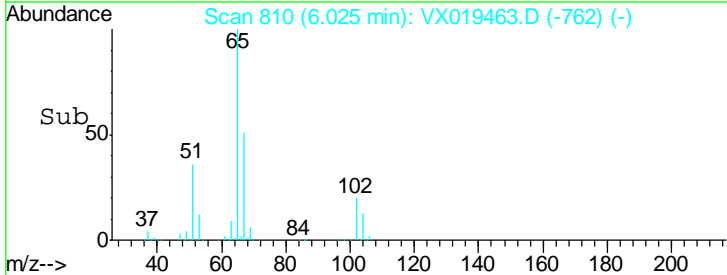
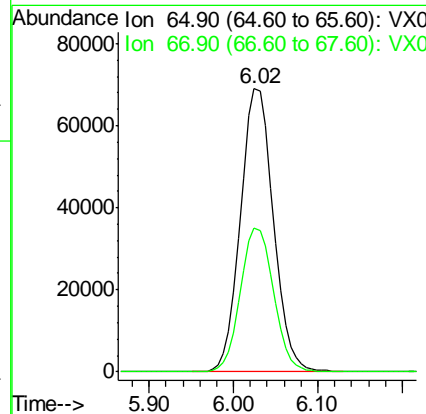
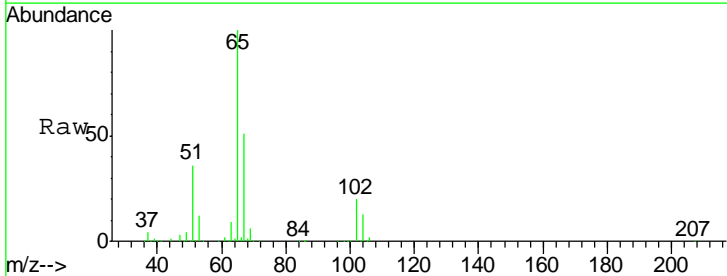
Instrument :  
 MSVOA\_X  
 ClientSampled :  
 BP-VPB178-GW-663-665

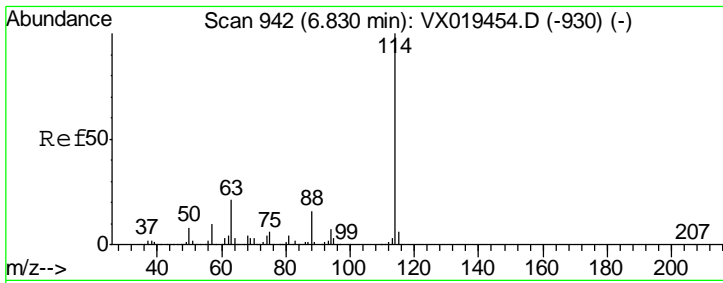
Tgt Ion	Resp	Lower	Upper
56	5933		
69	177.2	25.2	37.8#
84	125.4	68.5	102.7#



#33  
 1,2-Dichloroethane-d4  
 Concen: 46.556 ug/l  
 RT: 6.02 min Scan# 810  
 Delta R.T. -0.01 min  
 Lab File: VX019463.D  
 Acq: 18 Nov 2020 20:09

Tgt Ion	Resp	Lower	Upper
65	182699		
67	51.2	0.0	102.4

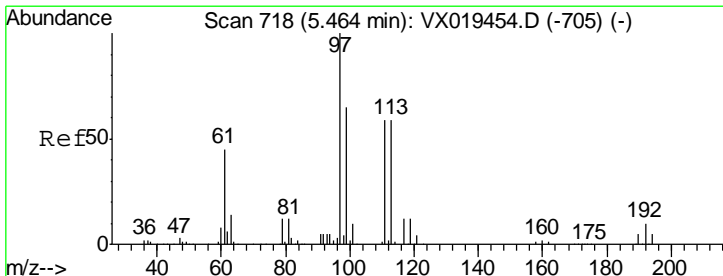
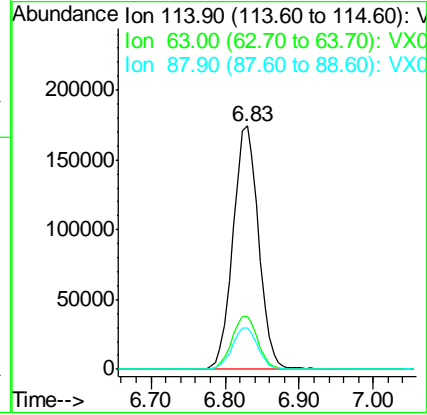
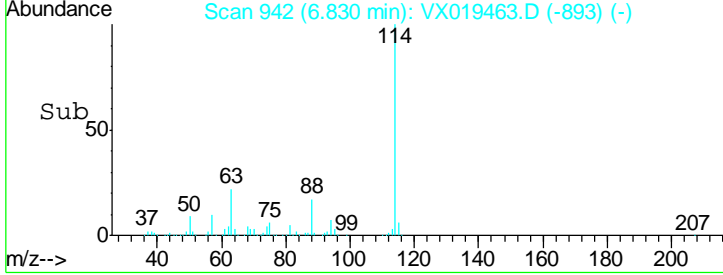
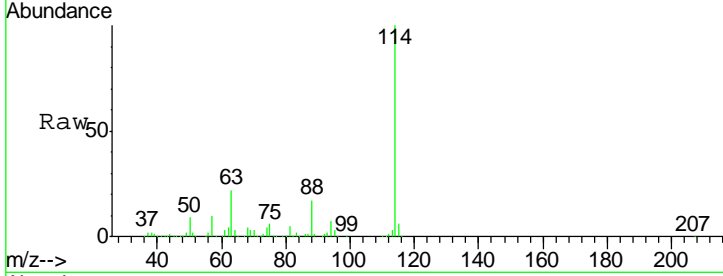




#34  
 1,4-Difluorobenzene  
 Concen: 50.000 ug/l  
 RT: 6.83 min Scan# 942  
 Delta R.T. -0.00 min  
 Lab File: VX019463.D  
 Acq: 18 Nov 2020 20:09

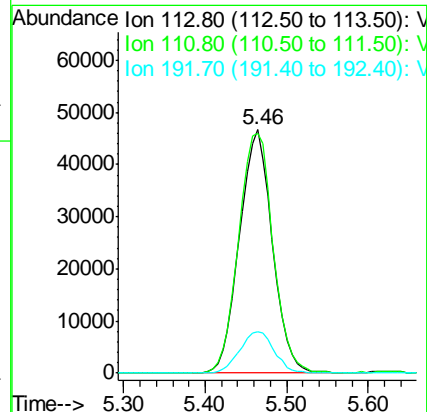
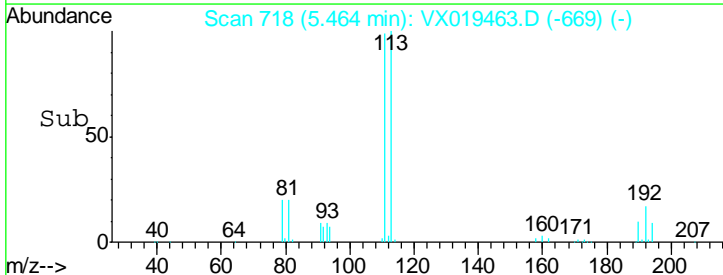
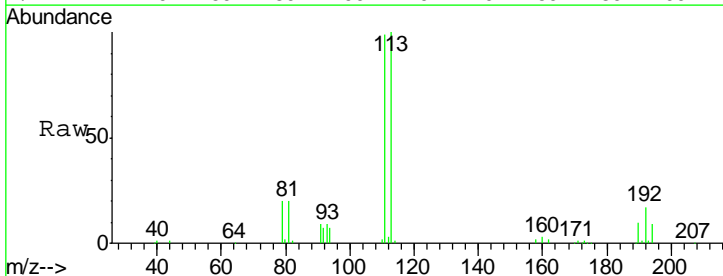
Instrument :  
 MSVOA\_X  
 ClientSampleId :  
 BP-VPB178-GW-663-665

Tgt Ion	Resp	Lower	Upper
114	420618		
63	21.8	0.0	42.0
88	17.1	0.0	32.0

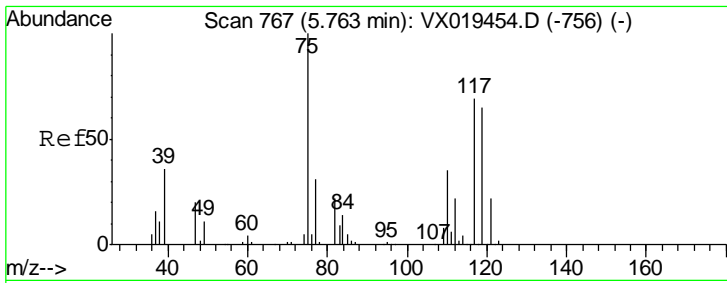


#35  
 Dibromofluoromethane  
 Concen: 47.223 ug/l  
 RT: 5.46 min Scan# 718  
 Delta R.T. -0.00 min  
 Lab File: VX019463.D  
 Acq: 18 Nov 2020 20:09

Tgt Ion	Resp	Lower	Upper
113	130699		
111	103.3	82.2	123.4
192	17.9	14.2	21.4



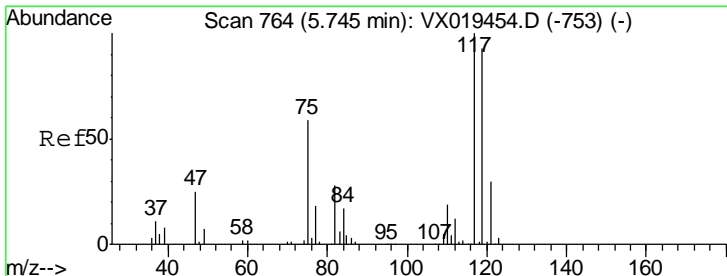
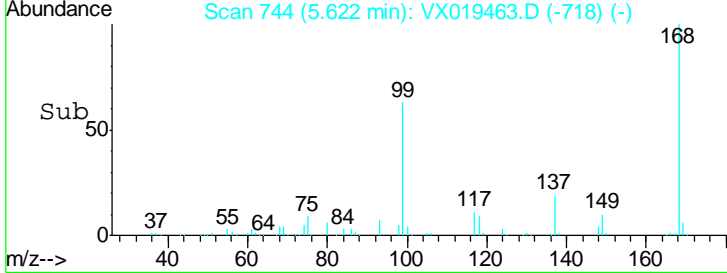
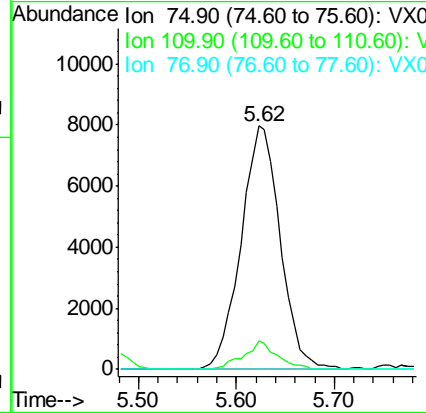
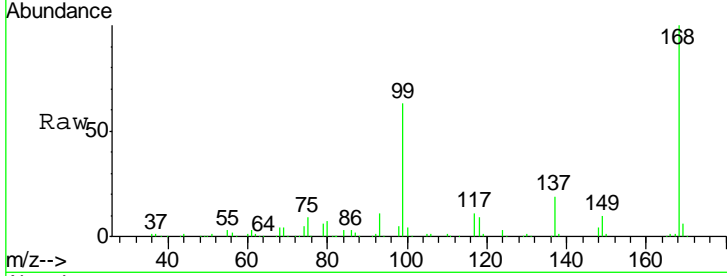




#36  
 1,1-Dichloropropene  
 Concen: 5.236 ug/l  
 RT: 5.62 min Scan# 744  
 Delta R.T. -0.14 min  
 Lab File: VX019463.D  
 Acq: 18 Nov 2020 20:09

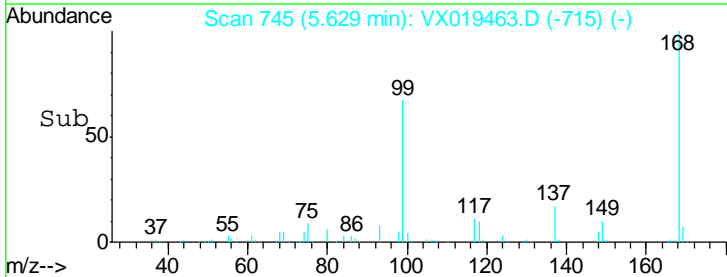
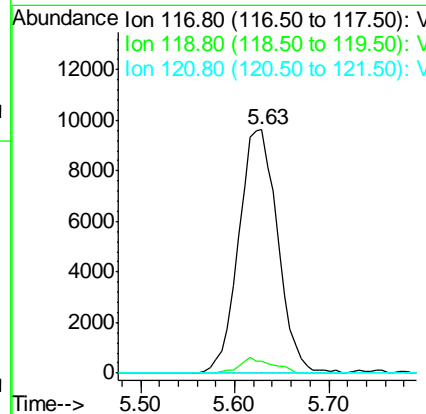
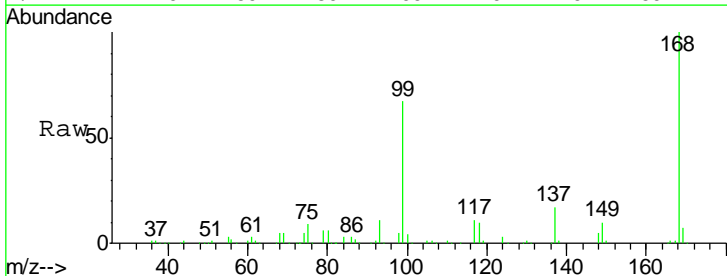
**Instrument :**  
 MSVOA\_X  
**ClientSampleId :**  
 BP-VPB178-GW-663-665

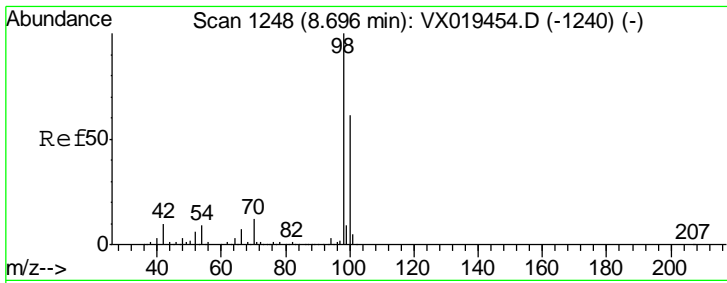
Tgt Ion	Resp	Lower	Upper
75	22075		
110	9.8	17.0	50.9#
77	0.0	24.7	37.1#



#38  
 Carbon Tetrachloride  
 Concen: 6.655 ug/l  
 RT: 5.63 min Scan# 745  
 Delta R.T. -0.12 min  
 Lab File: VX019463.D  
 Acq: 18 Nov 2020 20:09

Tgt Ion	Resp	Lower	Upper
117	27675		
119	4.7	74.1	111.1#
121	0.0	23.6	35.4#

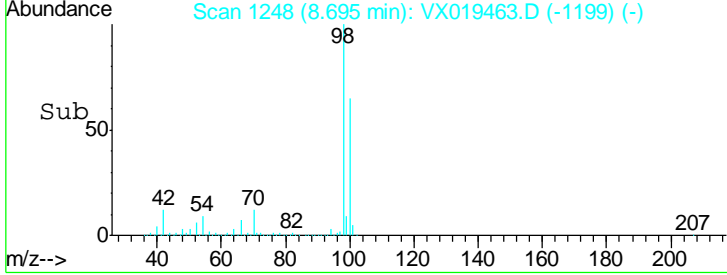
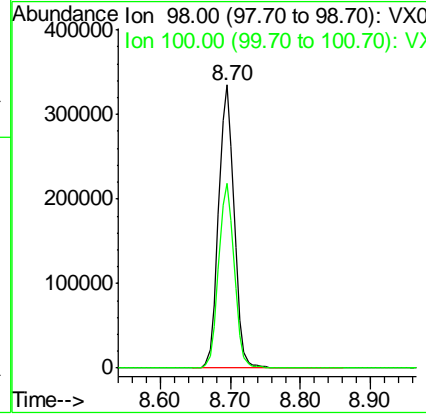
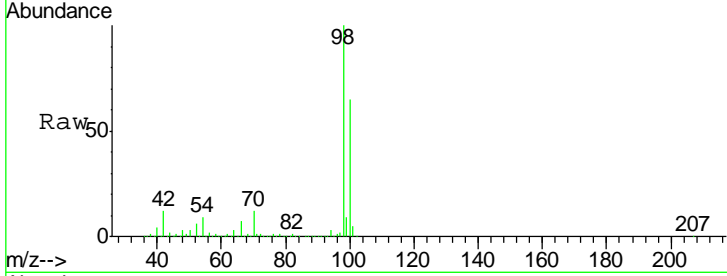




#50  
 Toluene-d8  
 Concen: 48.317 ug/l  
 RT: 8.70 min Scan# 1248  
 Delta R.T. -0.00 min  
 Lab File: VX019463.D  
 Acq: 18 Nov 2020 20:09

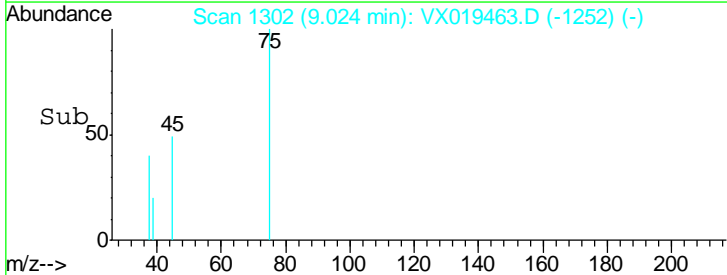
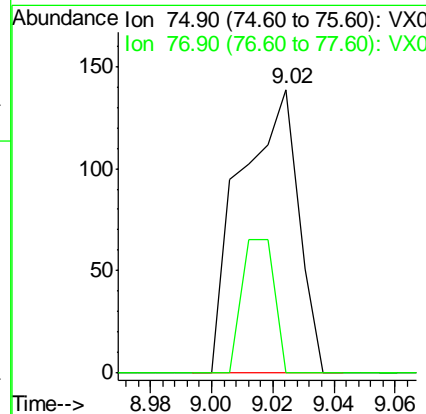
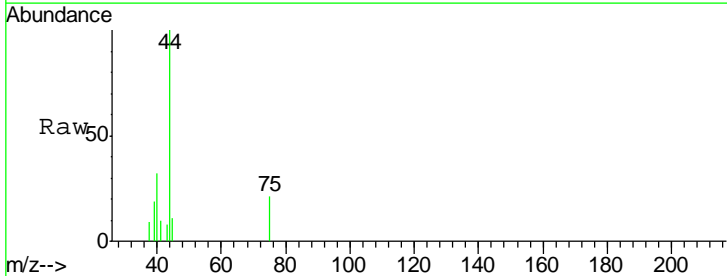
**Instrument :**  
 MSVOA\_X  
**ClientSampled :**  
 BP-VPB178-GW-663-665

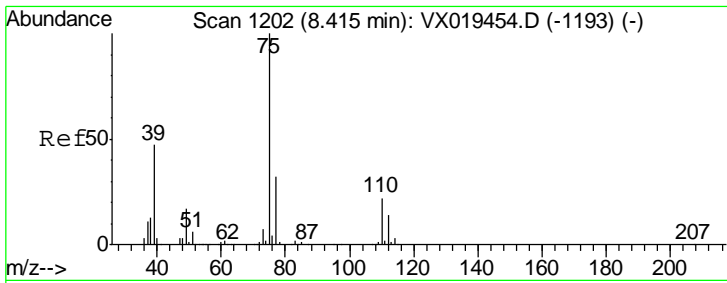
Tgt Ion	Resp	Lower	Upper
98	519661		
98	100		
100	65.7	52.6	79.0



#53  
 t-1,3-Dichloropropene  
 Concen: 1.861 ug/l  
 RT: 9.02 min Scan# 1302  
 Delta R.T. 0.01 min  
 Lab File: VX019463.D  
 Acq: 18 Nov 2020 20:09

Tgt Ion	Resp	Lower	Upper
75	183		
75	100		
77	0.0	25.0	37.6#

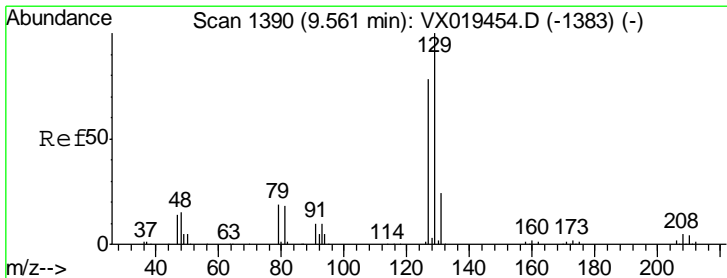
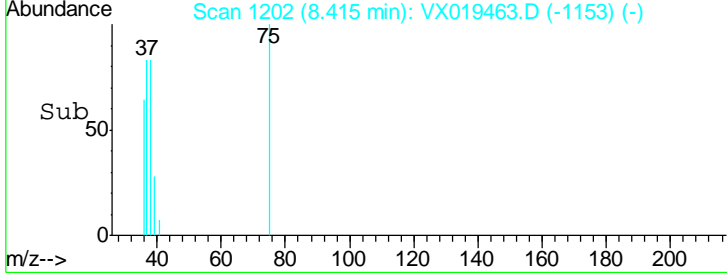
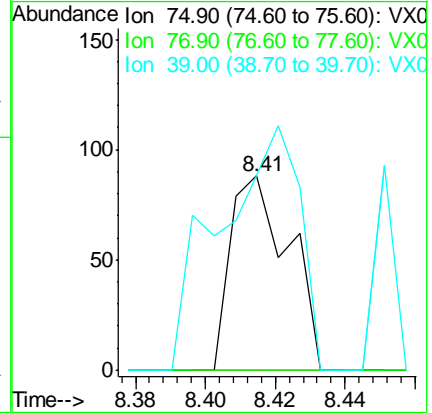
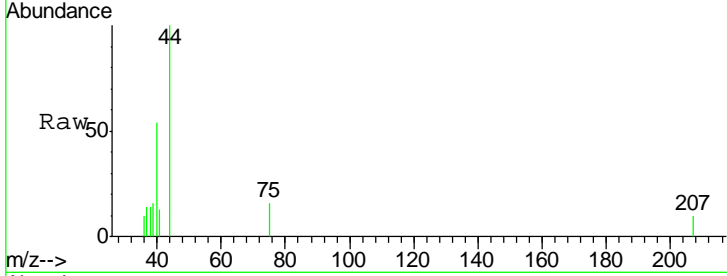




#54  
 cis-1,3-Dichloropropene  
 Concen: 1.503 ug/l  
 RT: 8.41 min Scan# 1202  
 Delta R.T. -0.00 min  
 Lab File: VX019463.D  
 Acq: 18 Nov 2020 20:09

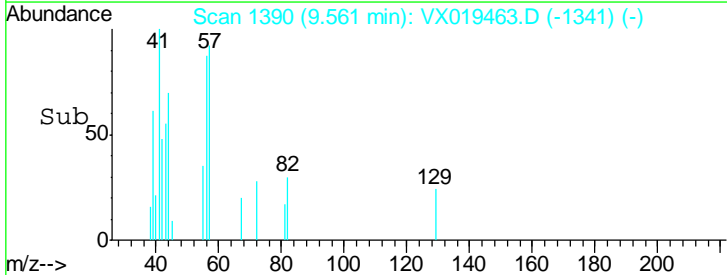
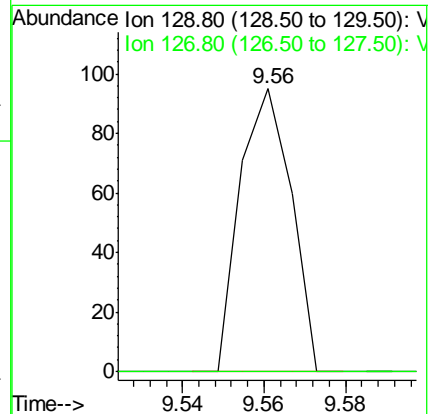
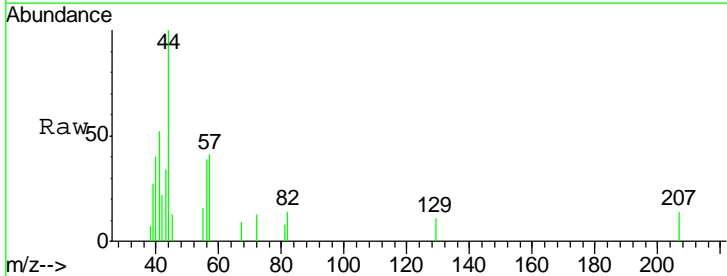
Instrument :  
 MSVOA\_X  
 ClientSampled :  
 BP-VPB178-GW-663-665

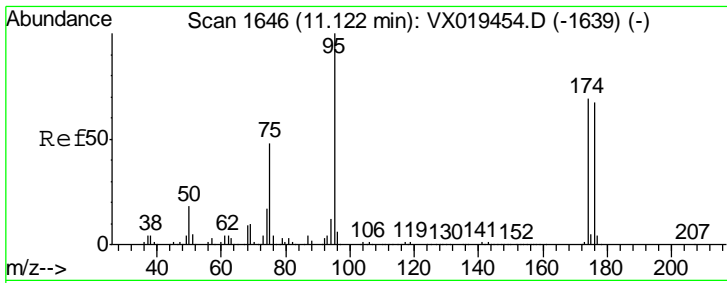
Tgt Ion	Resp	Lower	Upper
75	102		
77	0.0	25.4	38.2#
39	100.0	37.4	56.2#



#60  
 Dibromochloromethane  
 Concen: 1.645 ug/l  
 RT: 9.56 min Scan# 1390  
 Delta R.T. -0.00 min  
 Lab File: VX019463.D  
 Acq: 18 Nov 2020 20:09

Tgt Ion	Resp	Lower	Upper
129	83		
127	0.0	38.8	116.4#

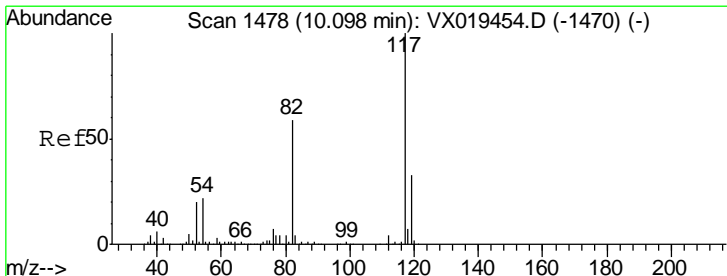
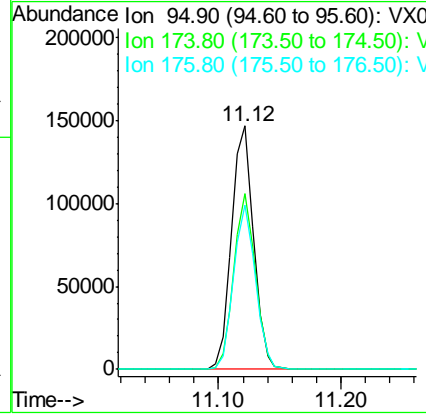
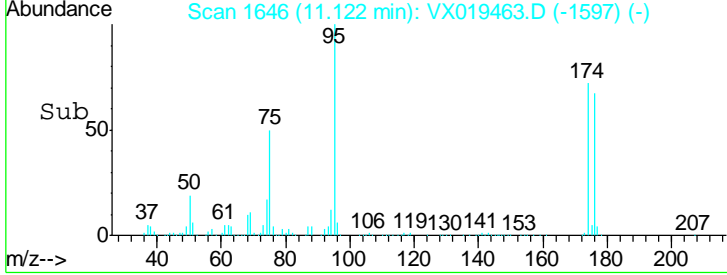
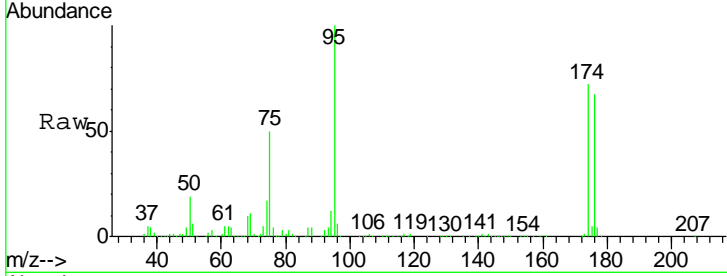




#62  
 4-Bromofluorobenzene  
 Concen: 46.211 ug/l  
 RT: 11.12 min Scan# 1646  
 Delta R.T. -0.00 min  
 Lab File: VX019463.D  
 Acq: 18 Nov 2020 20:09

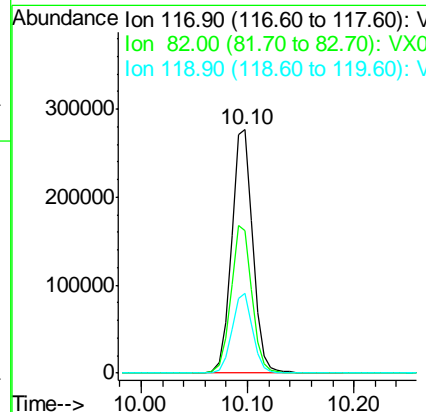
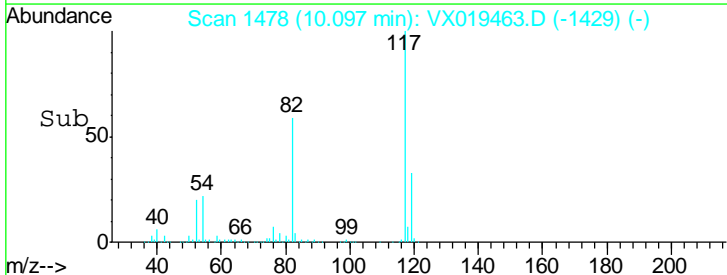
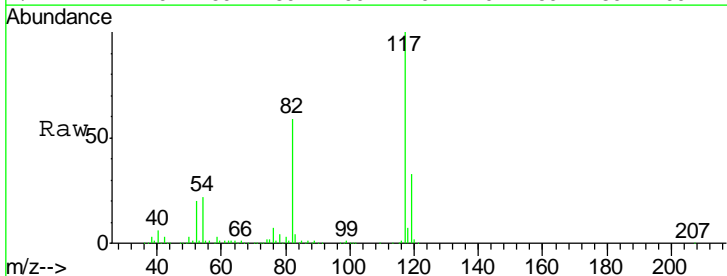
Instrument :  
 MSVOA\_X  
 ClientSampled :  
 BP-VPB178-GW-663-665

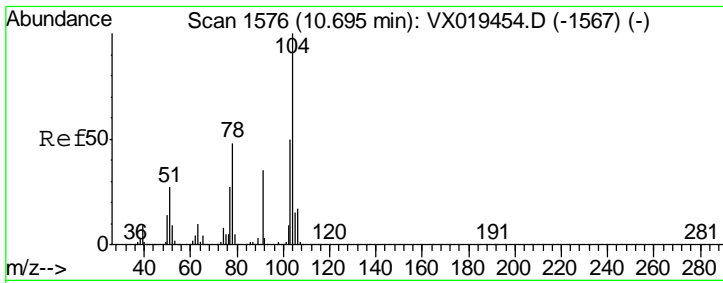
Tgt Ion	Resp	Lower	Upper
95	182593		
174	70.9	0.0	141.4
176	66.7	0.0	137.6



#63  
 Chlorobenzene-d5  
 Concen: 50.000 ug/l  
 RT: 10.10 min Scan# 1478  
 Delta R.T. -0.00 min  
 Lab File: VX019463.D  
 Acq: 18 Nov 2020 20:09

Tgt Ion	Resp	Lower	Upper
117	384969		
82	58.8	47.4	71.2
119	32.7	26.3	39.5

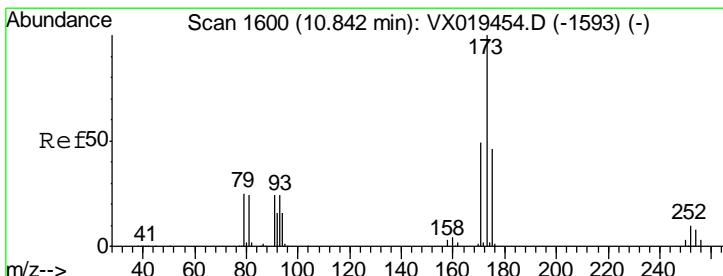
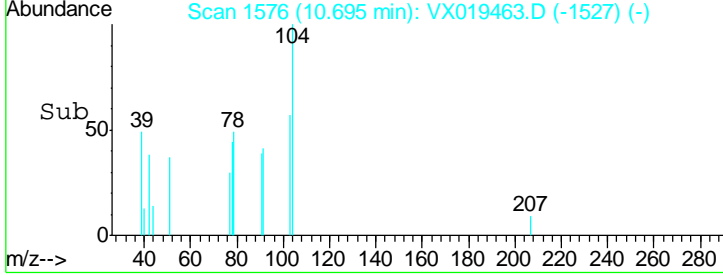
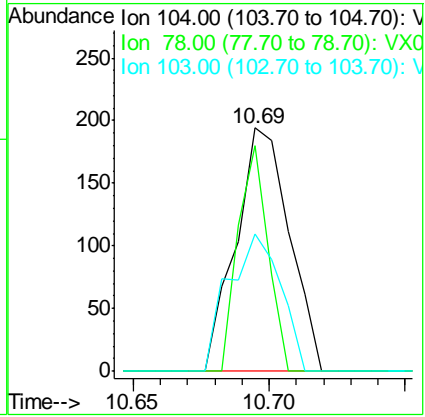
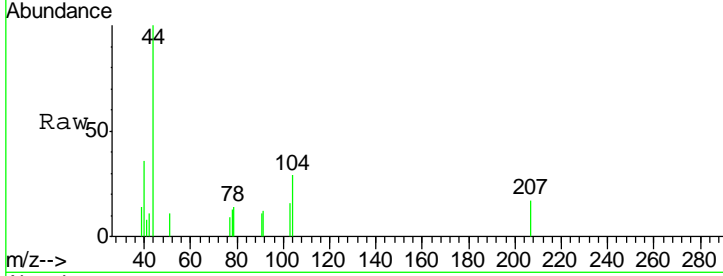




#70  
 Styrene  
 Concen: 2.157 ug/l  
 RT: 10.69 min Scan# 1576  
 Delta R.T. -0.00 min  
 Lab File: VX019463.D  
 Acq: 18 Nov 2020 20:09

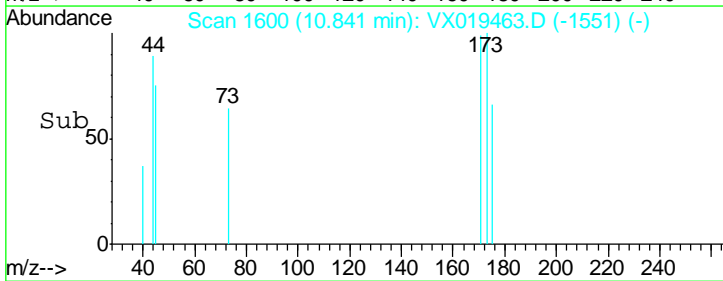
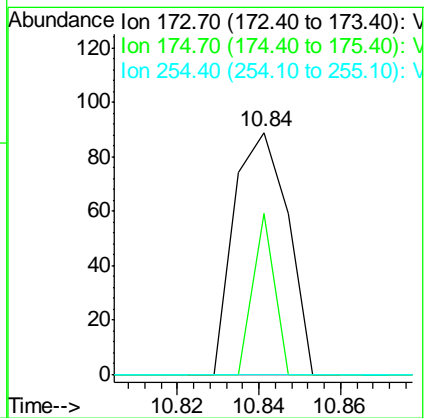
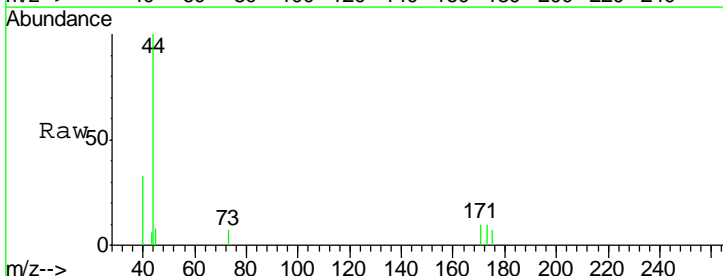
**Instrument :**  
 MSVOA\_X  
**ClientSampled :**  
 BP-VPB178-GW-663-665

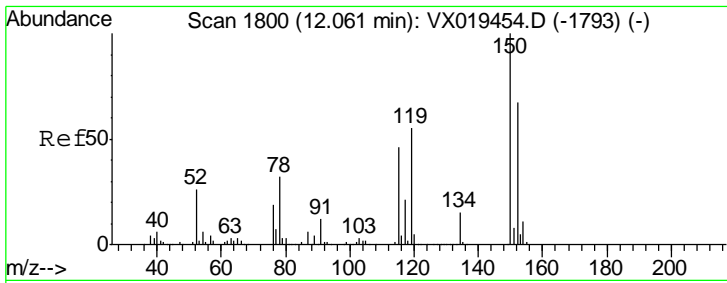
Tgt Ion	Resp	Lower	Upper
104	100		
78	51.9	42.7	64.1
103	55.3	43.2	64.8



#71  
 Bromoform  
 Concen: 3.715 ug/l  
 RT: 10.84 min Scan# 1600  
 Delta R.T. 0.00 min  
 Lab File: VX019463.D  
 Acq: 18 Nov 2020 20:09

Tgt Ion	Resp	Lower	Upper
173	100		
175	0.0	23.9	71.7#
254	0.0	0.1	0.1#

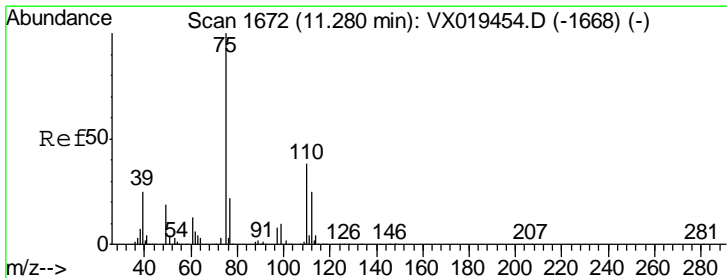
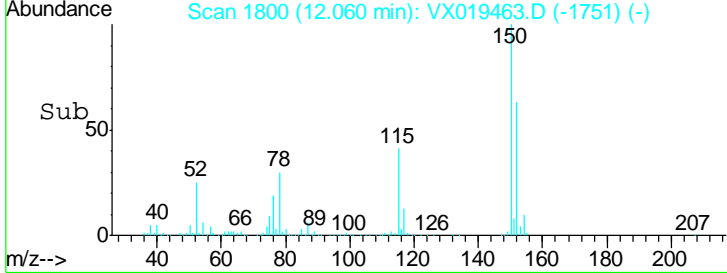
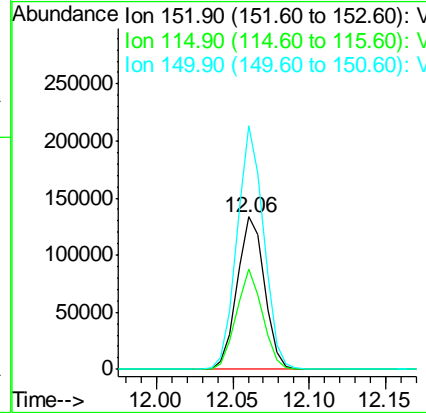
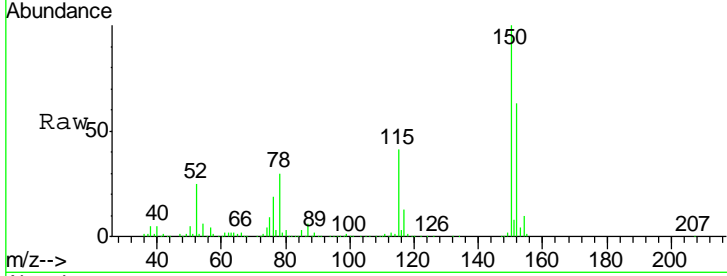




#72  
 1,4-Dichlorobenzene-d4  
 Concen: 50.000 ug/l  
 RT: 12.06 min Scan# 1800  
 Delta R.T. -0.00 min  
 Lab File: VX019463.D  
 Acq: 18 Nov 2020 20:09

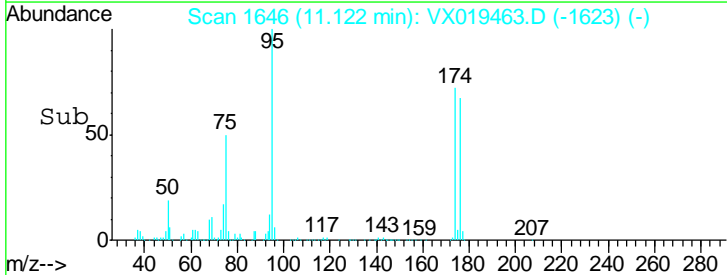
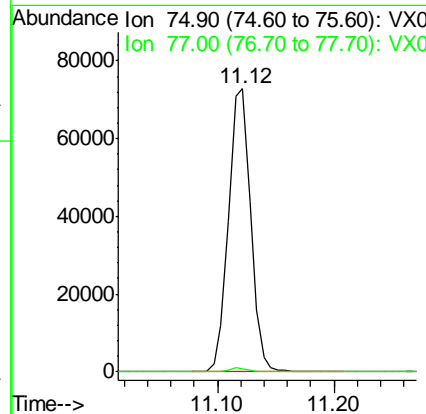
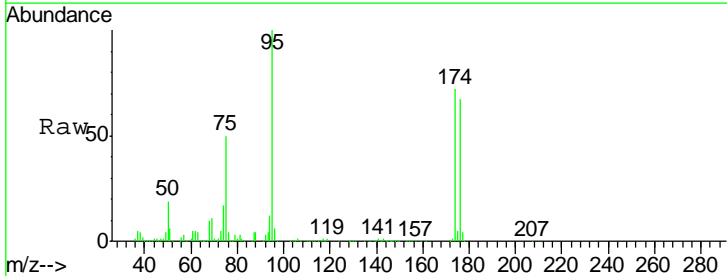
Instrument :  
 MSVOA\_X  
 ClientSampled :  
 BP-VPB178-GW-663-665

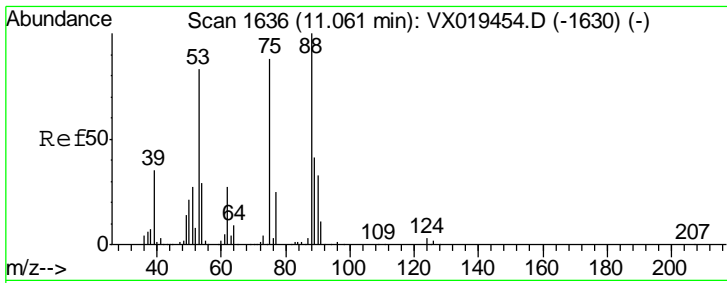
Tgt Ion	Resp	Lower	Upper
152	100		
115	63.2	44.9	134.7
150	155.8	0.0	344.4



#76  
 1,2,3-Trichloropropane  
 Concen: 24.366 ug/l  
 RT: 11.12 min Scan# 1646  
 Delta R.T. -0.16 min  
 Lab File: VX019463.D  
 Acq: 18 Nov 2020 20:09

Tgt Ion	Resp	Lower	Upper
75	100		
77	1.2	20.0	59.9#

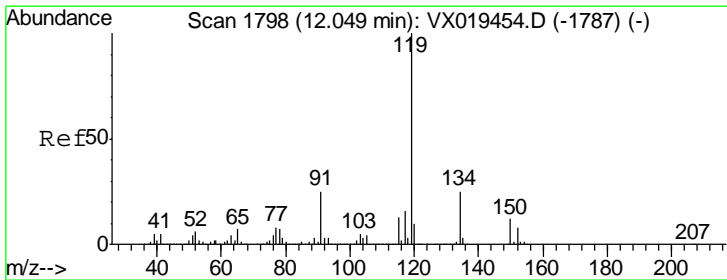
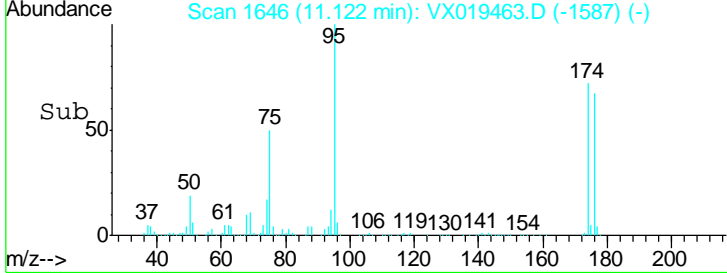
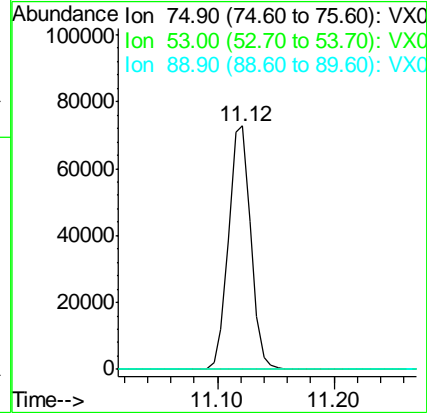
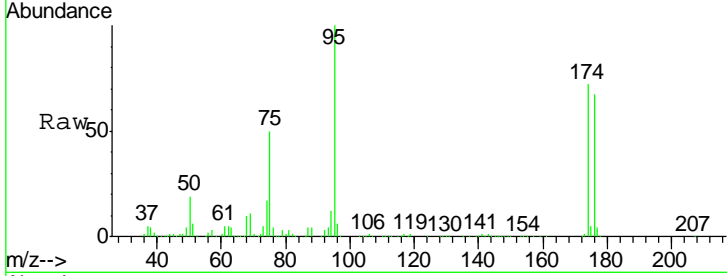




#81  
 trans-1,4-Dichloro-2-butene  
 Concen: 64.604 ug/l  
 RT: 11.12 min Scan# 1646  
 Delta R.T. 0.06 min  
 Lab File: VX019463.D  
 Acq: 18 Nov 2020 20:09

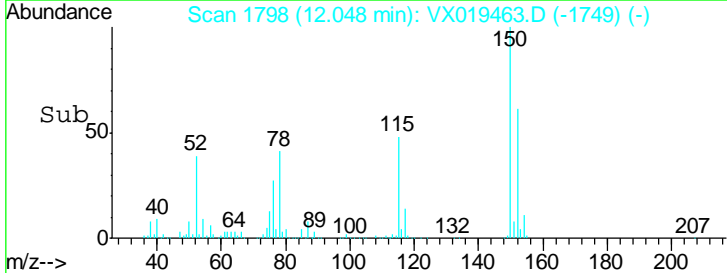
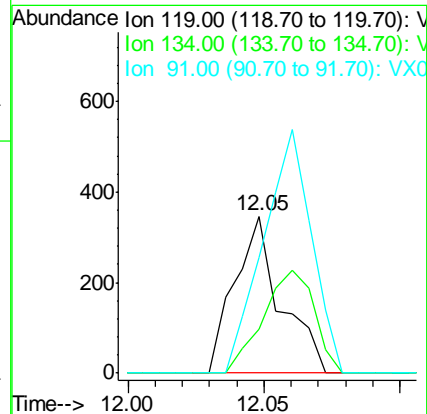
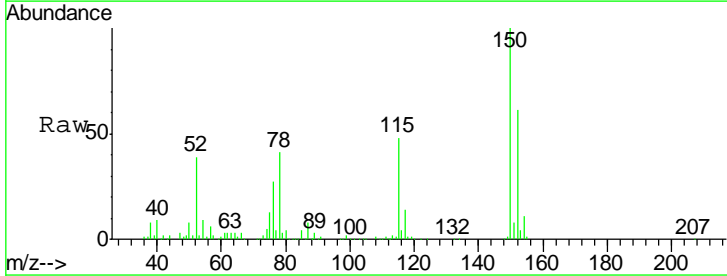
Instrument : MSVOA\_X  
 ClientSampleId : BP-VPB178-GW-663-665

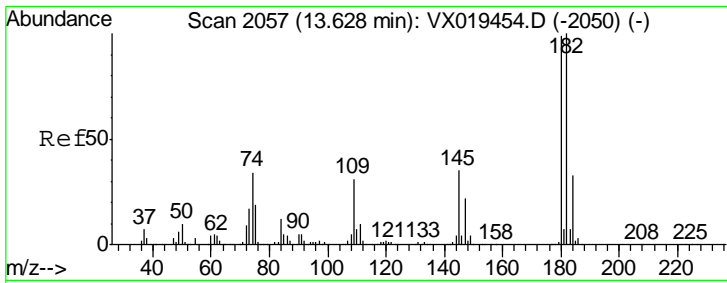
Tgt Ion	Resp	Lower	Upper
75	100		
53	0.0	81.0	121.6#
89	0.0	37.0	55.4#



#86  
 p-Isopropyltoluene  
 Concen: 1.640 ug/l  
 RT: 12.05 min Scan# 1798  
 Delta R.T. 0.00 min  
 Lab File: VX019463.D  
 Acq: 18 Nov 2020 20:09

Tgt Ion	Resp	Lower	Upper
119	100		
134	72.5	12.8	38.3#
91	161.4	12.6	37.6#

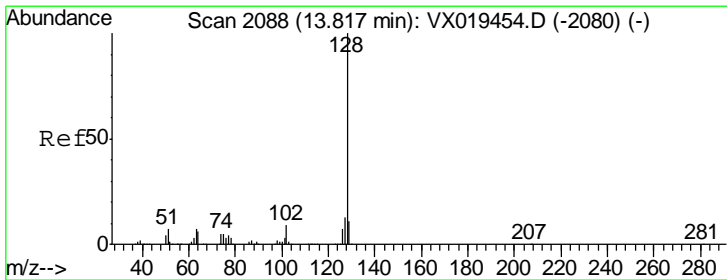
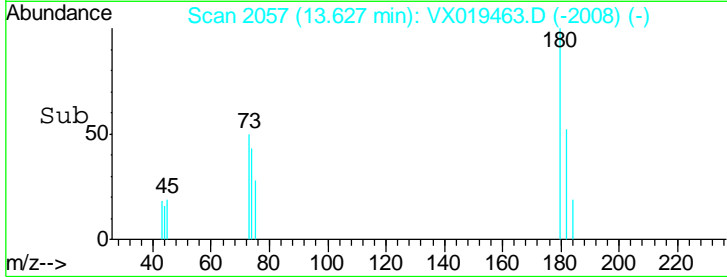
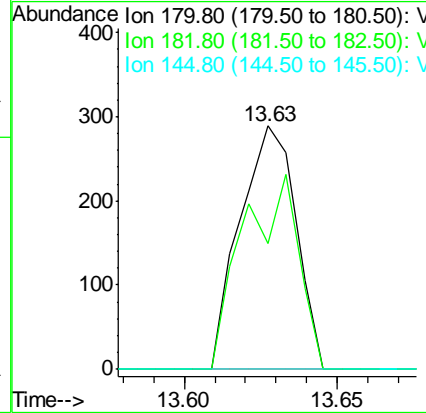
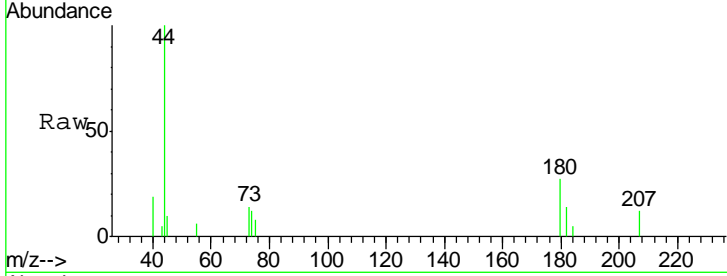




#93  
 1,2,4-Trichlorobenzene  
 Concen: 2.852 ug/l  
 RT: 13.63 min Scan# 2057  
 Delta R.T. 0.00 min  
 Lab File: VX019463.D  
 Acq: 18 Nov 2020 20:09

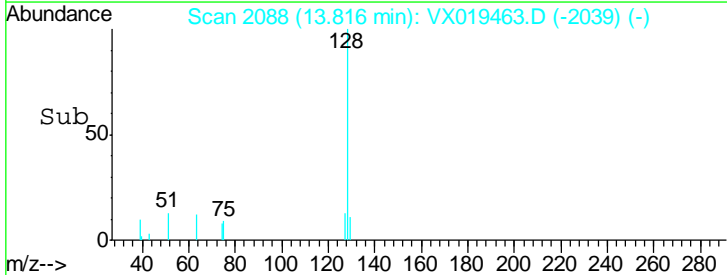
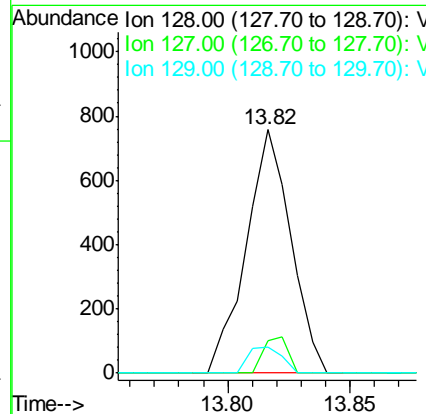
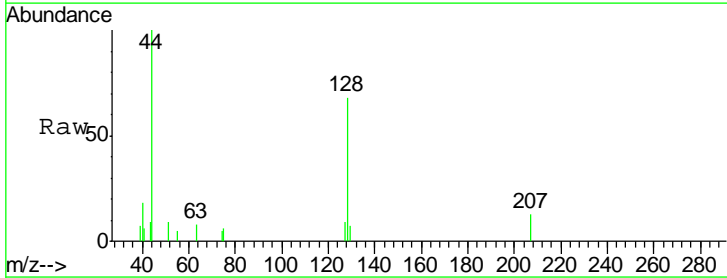
Instrument : MSVOA\_X  
 ClientSampled : BP-VPB178-GW-663-665

Tgt Ion	Resp	Lower	Upper
180	100		
182	79.5	48.1	144.4
145	0.0	16.9	50.6#

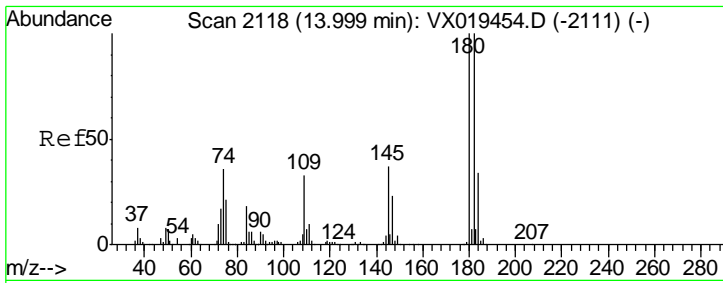


#95  
 Naphthalene  
 Concen: 2.388 ug/l  
 RT: 13.82 min Scan# 2088  
 Delta R.T. 0.00 min  
 Lab File: VX019463.D  
 Acq: 18 Nov 2020 20:09

Tgt Ion	Resp	Lower	Upper
128	100		
127	8.2	10.2	15.2#
129	8.0	8.8	13.2#







#96  
 1,2,3-Trichlorobenzene  
 Concen: 2.516 ug/l  
 RT: 14.01 min Scan# 2119  
 Delta R.T. 0.01 min  
 Lab File: VX019463.D  
 Acq: 18 Nov 2020 20:09

**Instrument :**  
 MSVOA\_X  
**ClientSampled :**  
 BP-VPB178-GW-663-665

Tot Ion	Ratio	Lower	Upper
180	100		
182	91.9	49.0	147.0
145	24.2	17.6	52.8

