

Data Path : Z:\voasrv\HPCHEM1\MSVOA\_X\Data\VX111921\  
 Data File : VX025243.D  
 Acq On : 19 Nov 2021 19:02  
 Operator : JC/MD  
 Sample : M4677-12  
 Misc : 5.0mL/MSVOA\_X/WATER  
 ALS Vial : 33 Sample Multiplier: 1

Instrument :  
 MSVOA\_X  
 ClientSampleId :

Quant Time: Nov 22 00:15:45 2021  
 Quant Method : Z:\voasrv\HPCHEM1\MSVOA\_X\Method\SFAMXML111121WMA.M  
 Quant Title : VOC Analysis  
 QLast Update : Mon Nov 22 00:11:59 2021  
 Response via : Initial Calibration

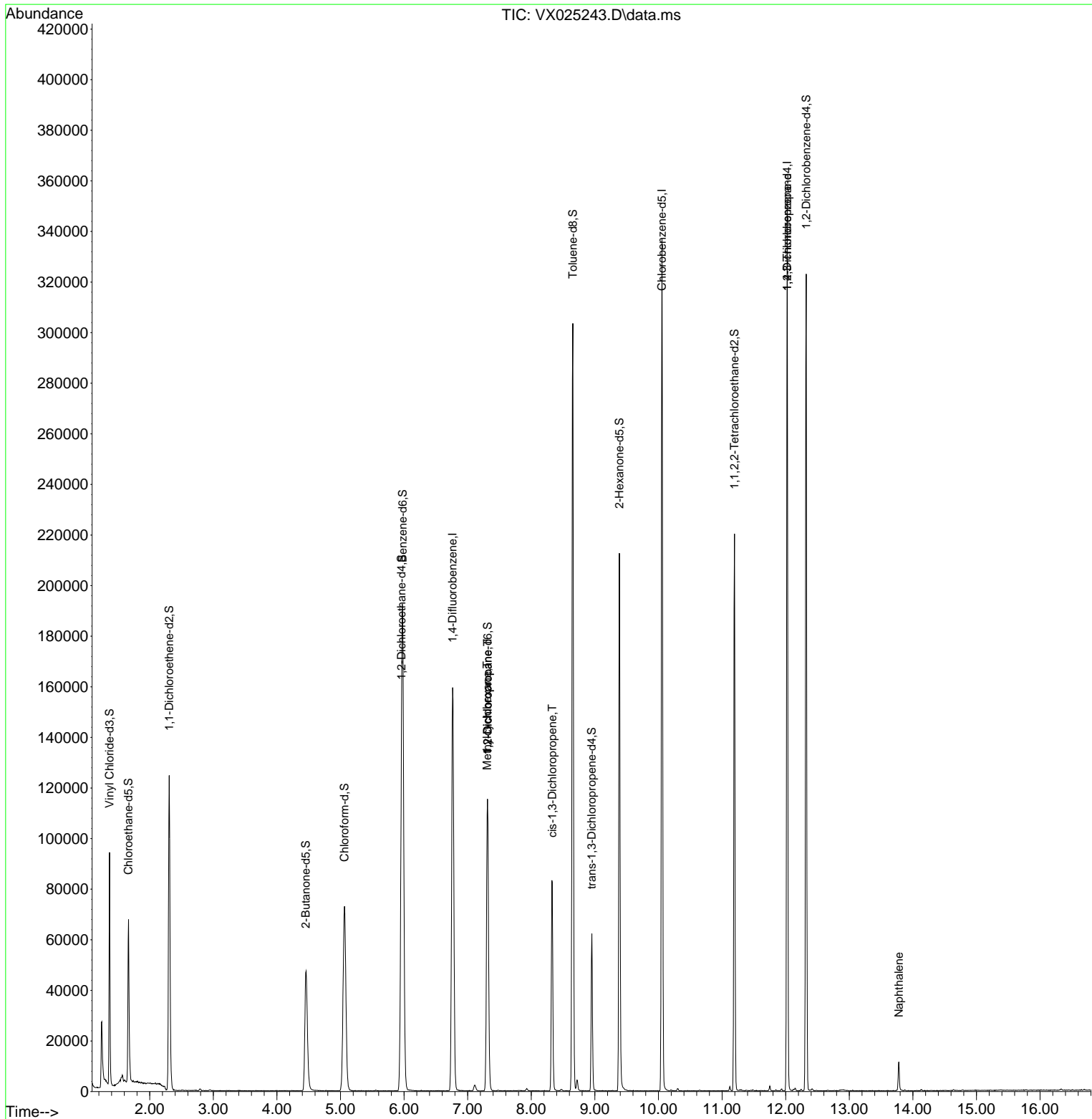
Compound	R.T.	QIon	Response	Conc	Units	Dev(Min)
-----						
Internal Standards						
1) 1,4-Difluorobenzene	6.763	114	173253	50.000	ug/L	0.00
28) Chlorobenzene-d5	10.055	117	156709	50.000	ug/L	0.00
58) 1,4-Dichlorobenzene-d4	12.024	152	74349	50.000	ug/L	0.00
System Monitoring Compounds						
4) Vinyl Chloride-d3	1.368	65	54513	46.574	ug/L	0.00
Spiked Amount	50.000	Range 60 - 135	Recovery =	93.140%		
7) Chloroethane-d5	1.666	69	45732	68.555	ug/L	0.00
Spiked Amount	50.000	Range 70 - 130	Recovery =	137.120%#		
11) 1,1-Dichloroethene-d2	2.307	63	67831	33.695	ug/L	0.00
Spiked Amount	50.000	Range 60 - 125	Recovery =	67.380%		
21) 2-Butanone-d5	4.452	46	83019	93.859	ug/L	0.00
Spiked Amount	100.000	Range 40 - 130	Recovery =	93.860%		
24) Chloroform-d	5.062	84	93358	45.339	ug/L	0.00
Spiked Amount	50.000	Range 70 - 125	Recovery =	90.680%		
26) 1,2-Dichloroethane-d4	5.958	65	59692	47.826	ug/L	0.00
Spiked Amount	50.000	Range 70 - 125	Recovery =	95.660%		
32) Benzene-d6	5.977	84	197244	46.117	ug/L	0.00
Spiked Amount	50.000	Range 70 - 125	Recovery =	92.240%		
36) 1,2-Dichloropropane-d6	7.312	67	59199	45.330	ug/L	0.00
Spiked Amount	50.000	Range 70 - 120	Recovery =	90.660%		
41) Toluene-d8	8.653	98	180551	44.204	ug/L	0.00
Spiked Amount	50.000	Range 80 - 120	Recovery =	88.400%		
43) trans-1,3-Dichloroprop...	8.952	79	28496	40.195	ug/L	0.00
Spiked Amount	50.000	Range 60 - 125	Recovery =	80.400%		
47) 2-Hexanone-d5	9.384	63	62472	89.082	ug/L	0.00
Spiked Amount	100.000	Range 45 - 130	Recovery =	89.080%		
56) 1,1,2,2-Tetrachloroeth...	11.195	84	83273	44.271	ug/L	0.00
Spiked Amount	50.000	Range 65 - 120	Recovery =	88.540%		
66) 1,2-Dichlorobenzene-d4	12.323	152	70399	47.765	ug/L	0.00
Spiked Amount	50.000	Range 80 - 120	Recovery =	95.540%		
-----						
Target Compounds						Qvalue
35) Methylcyclohexane	7.306	83	15151	7.121	ug/L #	23
37) 1,2-Dichloropropane	7.312	63	6489	5.380	ug/L #	85
39) cis-1,3-Dichloropropene	8.330	75	1925	0.972	ug/L #	67
61) 1,2,3-Trichloropropane	12.024	75	8229	5.878	ug/L #	60
71) Naphthalene	13.780	128	8943	1.724	ug/L	97
-----						

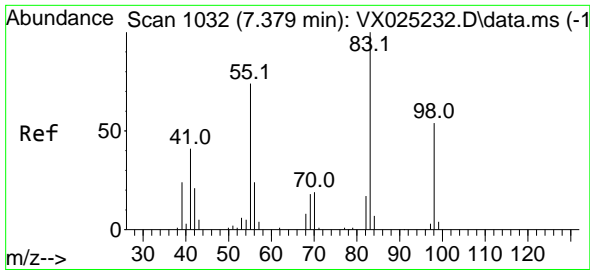
(#) = qualifier out of range (m) = manual integration (+) = signals summed

Data Path : Z:\voasrv\HPCHEM1\MSVOA\_X\Data\VX111921\  
 Data File : VX025243.D  
 Acq On : 19 Nov 2021 19:02  
 Operator : JC/MD  
 Sample : M4677-12  
 Misc : 5.0mL/MSVOA\_X/WATER  
 ALS Vial : 33 Sample Multiplier: 1

Instrument :  
 MSVOA\_X  
 ClientSampleId :

Quant Time: Nov 22 00:15:45 2021  
 Quant Method : Z:\voasrv\HPCHEM1\MSVOA\_X\Method\SFAMXLM111121WMA.M  
 Quant Title : VOC Analysis  
 QLast Update : Mon Nov 22 00:11:59 2021  
 Response via : Initial Calibration

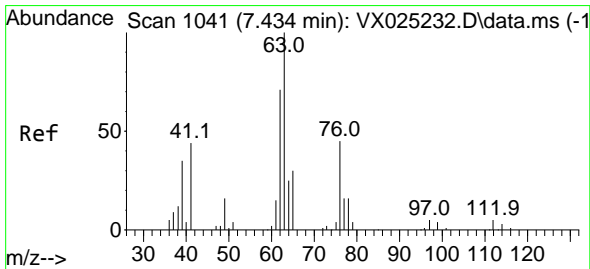
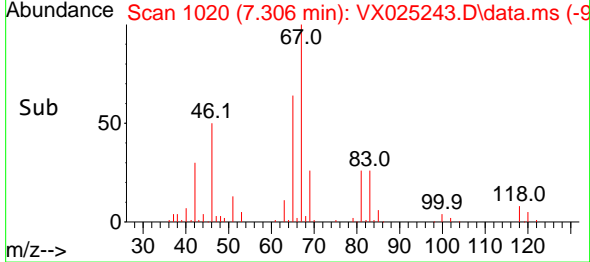
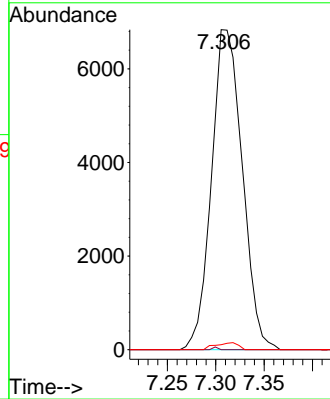
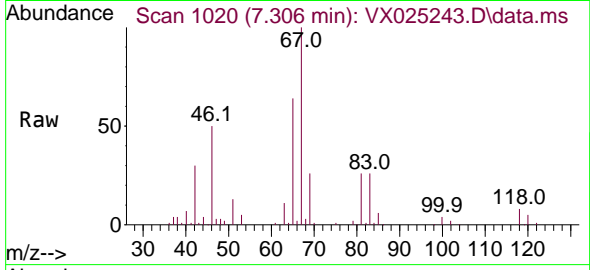




#35  
 Methylcyclohexane  
 Concen: 7.121 ug/L  
 RT: 7.306 min Scan# 1020  
 Delta R.T. -0.073 min  
 Lab File: VX025243.D  
 Acq: 19 Nov 2021 19:02

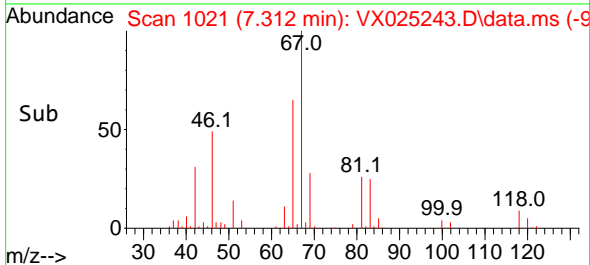
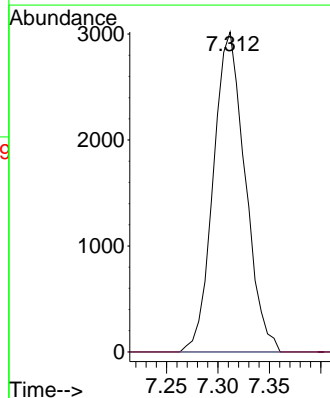
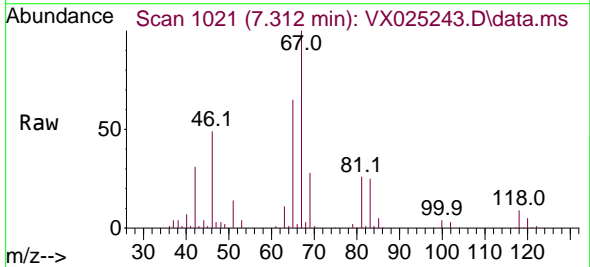
Instrument : MSVOA\_X  
 ClientSampleId :

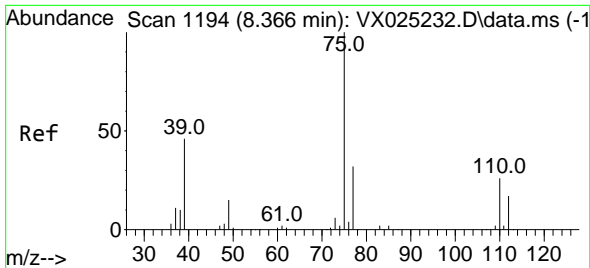
Tgt Ion: 83 Resp: 15151  
 Ion Ratio Lower Upper  
 83 100  
 55 0.0 52.6 79.0#  
 98 1.6 37.9 56.9#



#37  
 1,2-Dichloropropane  
 Concen: 5.380 ug/L  
 RT: 7.312 min Scan# 1021  
 Delta R.T. -0.122 min  
 Lab File: VX025243.D  
 Acq: 19 Nov 2021 19:02

Tgt Ion: 63 Resp: 6489  
 Ion Ratio Lower Upper  
 63 100  
 112 0.0 4.0 6.0#

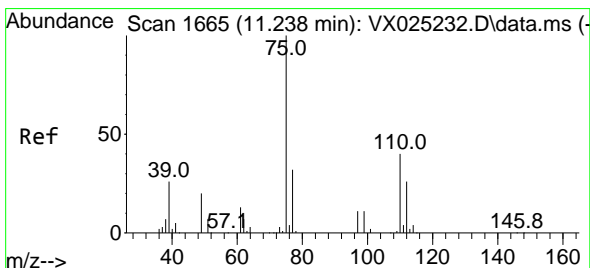
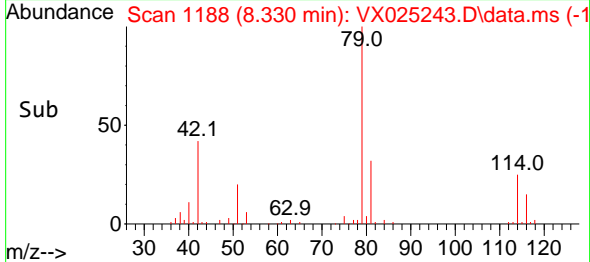
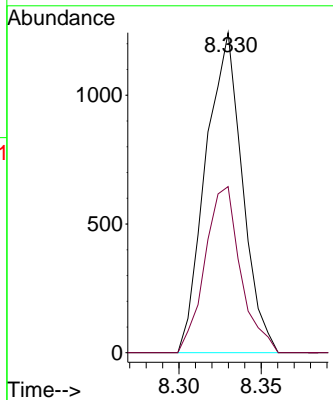
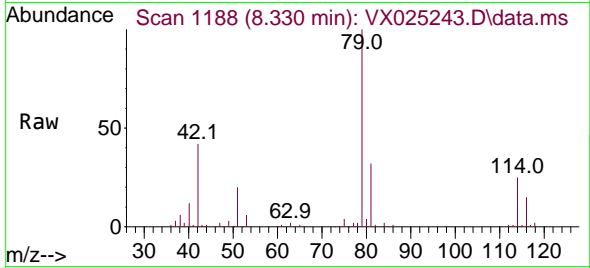




#39  
 cis-1,3-Dichloropropene  
 Concen: 0.972 ug/L  
 RT: 8.330 min Scan# 1194  
 Delta R.T. -0.037 min  
 Lab File: VX025243.D  
 Acq: 19 Nov 2021 19:02

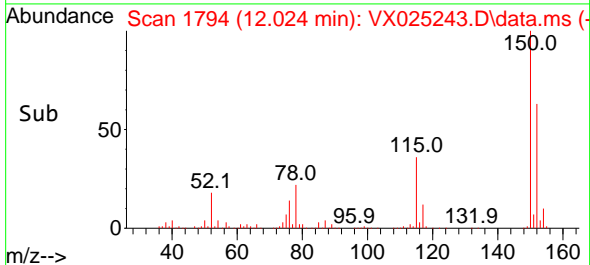
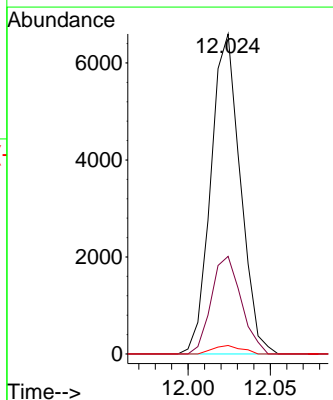
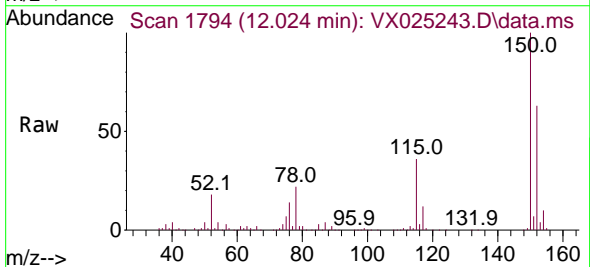
Instrument : MSVOA\_X  
 ClientSampleId :

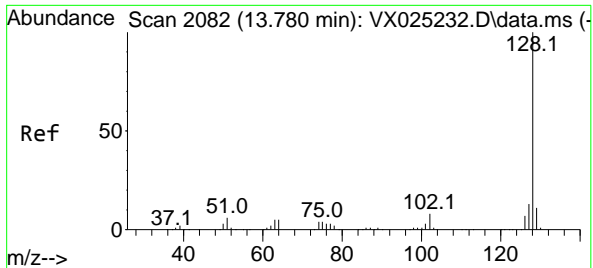
Tgt Ion: 75 Resp: 1925  
 Ion Ratio Lower Upper  
 75 100  
 77 51.9 23.1 42.9#



#61  
 1,2,3-Trichloropropane  
 Concen: 5.878 ug/L  
 RT: 12.024 min Scan# 1794  
 Delta R.T. 0.786 min  
 Lab File: VX025243.D  
 Acq: 19 Nov 2021 19:02

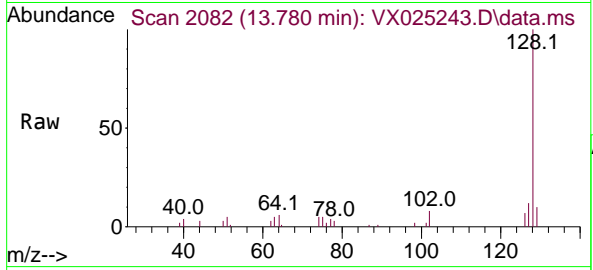
Tgt Ion: 75 Resp: 8229  
 Ion Ratio Lower Upper  
 75 100  
 77 30.9 26.6 39.8  
 110 2.6 37.2 55.8#





#71  
 Naphthalene  
 Concen: 1.724 ug/L  
 RT: 13.780 min Scan# 20  
 Delta R.T. -0.000 min  
 Lab File: VX025243.D  
 Acq: 19 Nov 2021 19:02

Instrument : MSVOA\_X  
 ClientSampleId :



Tgt Ion:128 Resp: 8943

Ion	Ratio	Lower	Upper
128	100		
127	12.5	10.6	15.8
129	9.4	9.1	13.7

