

Data Path : Z:\VOASRV\HPCHEM1\MSVOA X\DATA\VX112019\
 Data File : VX013485.D
 Acq On : 20 Nov 2019 18:18
 Operator : JC/SP
 Sample : K5957-14
 Misc : 5.0mL/MSVOA X/WATER
 ALS Vial : 19 Sample Multiplier: 1

Instrument :
 MSVOA_X
 ClientSampled :
 EB-SOIL-111919

Quant Time: Nov 21 00:51:12 2019
 Quant Method : Z:\VOASRV\HPCHEM1\MSVOA_X\METHOD\82X103119W.M
 Quant Title : SW846 8260
 QLast Update : Sat Nov 02 07:06:38 2019
 Response via : Initial Calibration

Internal Standards	R.T.	QIon	Response	Conc	Units	Dev(Min)
1) Pentafluorobenzene	5.65	168	721397	50.00	ug/l	0.00
34) 1,4-Difluorobenzene	6.85	114	1155821	50.00	ug/l	0.00
63) Chlorobenzene-d5	10.11	117	1031828	50.00	ug/l	0.00
72) 1,4-Dichlorobenzene-d4	12.07	152	450393	50.00	ug/l	0.00

System Monitoring Compounds	R.T.	QIon	Response	Conc	Units	Dev(Min)
33) 1,2-Dichloroethane-d4	6.05	65	420687	49.22	ug/l	0.00
Spiked Amount				50.000		
Recovery						98.44%
35) Dibromofluoromethane	5.49	113	351586	48.50	ug/l	0.00
Spiked Amount				50.000		
Recovery						97.00%
50) Toluene-d8	8.71	98	1367781	50.05	ug/l	0.00
Spiked Amount				50.000		
Recovery						100.10%
62) 4-Bromofluorobenzene	11.14	95	458518	46.49	ug/l	0.00
Spiked Amount				50.000		
Recovery						92.98%

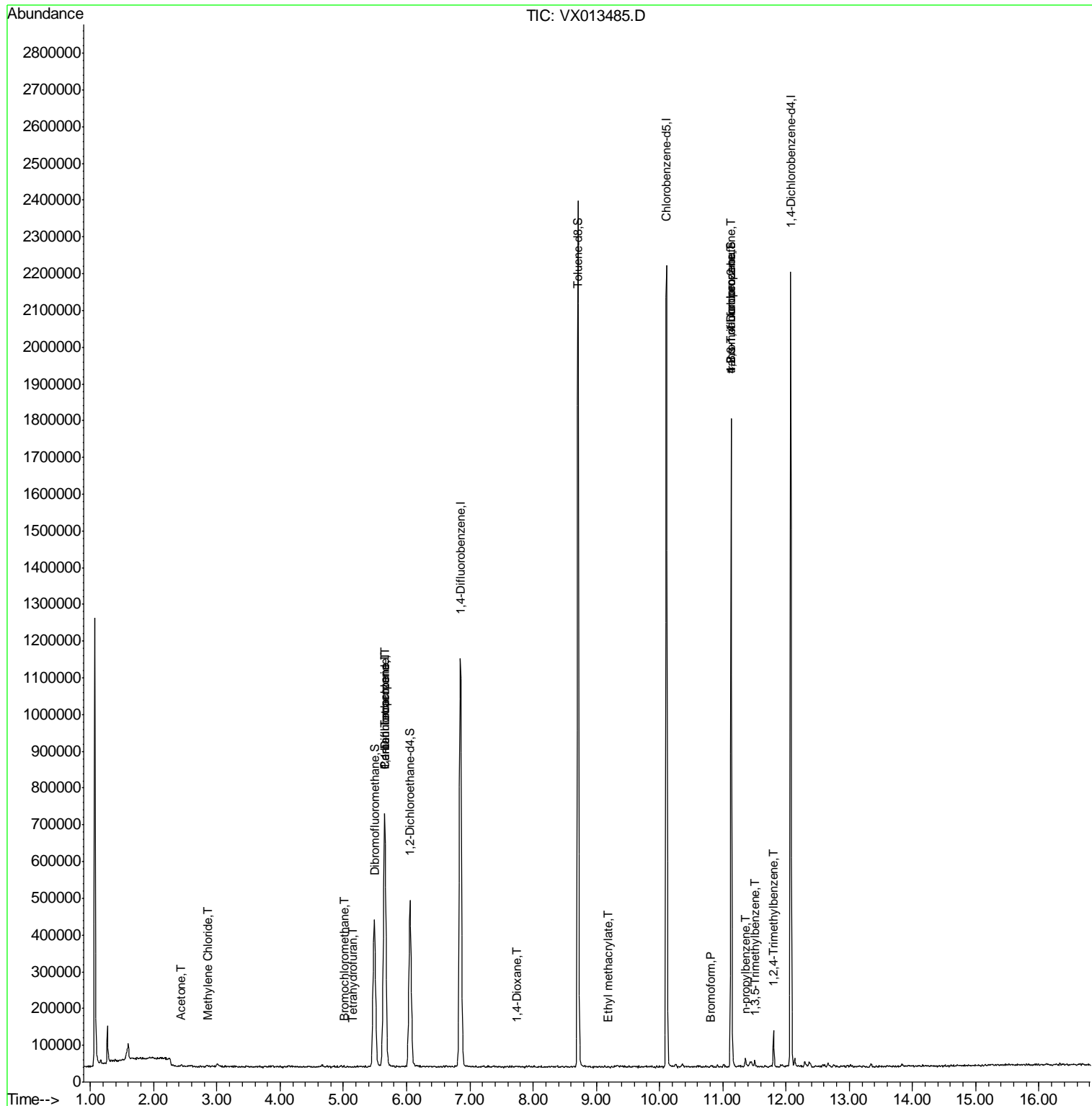
Target Compounds	R.T.	QIon	Response	Conc	Units	Qvalue
6) Chloroethane	1.66	64	775	Below Cal		# 64
16) Acetone	2.44	43	3577	0.839	ug/l	93
20) Methylene Chloride	2.84	84	2351	0.298	ug/l	# 63
28) Bromochloromethane	5.01	49	1682	0.456	ug/l	# 25
29) Tetrahydrofuran	5.14	42	1082	0.281	ug/l	# 86
36) 1,1-Dichloropropene	5.65	75	49302	4.972	ug/l	# 53
38) Carbon Tetrachloride	5.65	117	63489	6.548	ug/l	# 16
49) 1,4-Dioxane	7.74	88	342	1.568	ug/l	# 84
56) Ethyl methacrylate	9.18	69	149	1.574	ug/l	# 1
71) Bromoform	10.80	173	262	3.237	ug/l	# 28
76) 1,2,3-Trichloropropane	11.14	75	223162	24.394	ug/l	# 34
78) n-propylbenzene	11.35	91	15182	0.456	ug/l	98
80) 1,3,5-Trimethylbenzene	11.50	105	8567	0.344	ug/l	95
81) trans-1,4-Dichloro-2-buten	11.14	75	223162	62.791	ug/l	# 10
84) 1,2,4-Trimethylbenzene	11.81	105	45191	1.811	ug/l	99

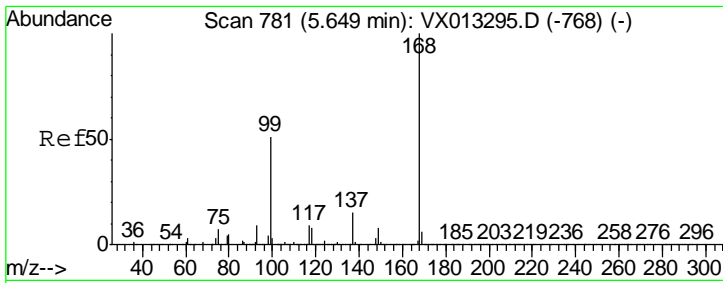
(#) = qualifier out of range (m) = manual integration (+) = signals summed

Data Path : Z:\VOASRV\HPCHEM1\MSVOA X\DATA\VX112019\
 Data File : VX013485.D
 Acq On : 20 Nov 2019 18:18
 Operator : JC/SP
 Sample : K5957-14
 Misc : 5.0mL/MSVOA X/WATER
 ALS Vial : 19 Sample Multiplier: 1

Instrument :
 MSVOA_X
 Client Sampled :
 EB-SOIL-111919

Quant Time: Nov 21 00:51:12 2019
 Quant Method : Z:\VOASRV\HPCHEM1\MSVOA_X\METHOD\82X103119W.M
 Quant Title : SW846 8260
 QLast Update : Sat Nov 02 07:06:38 2019
 Response via : Initial Calibration

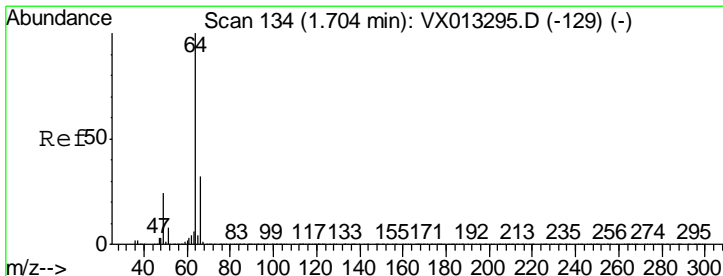
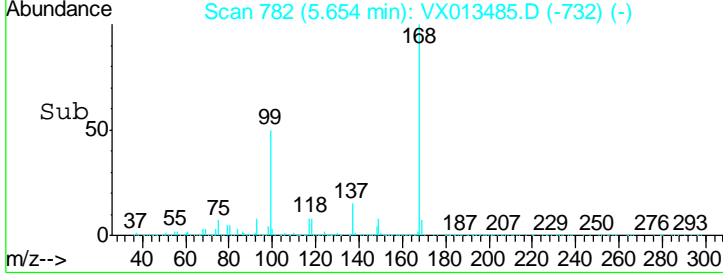
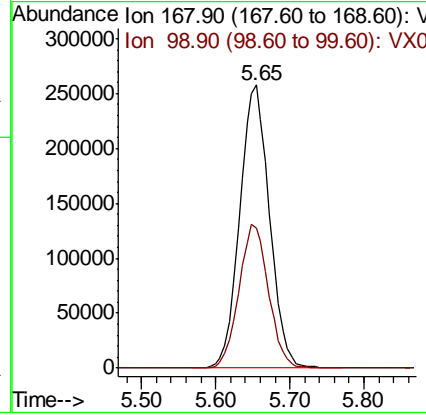
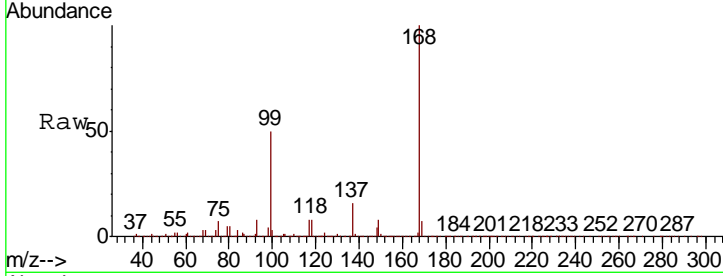




#1
 Pentafluorobenzene
 Concen: 50.000 ug/l
 RT: 5.65 min Scan# 782
 Delta R.T. 0.01 min
 Lab File: VX013485.D
 Acq: 20 Nov 2019 18:18

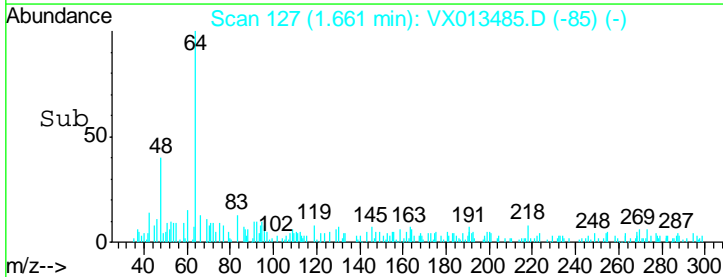
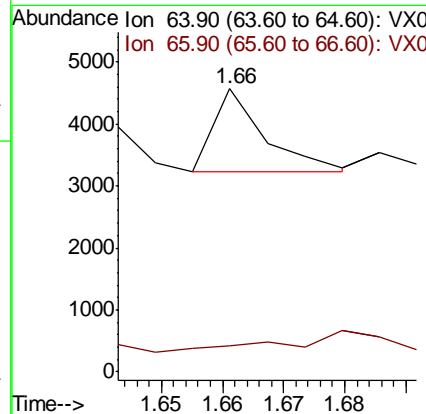
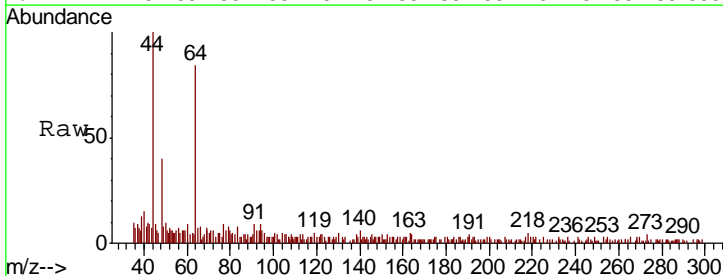
Instrument :
 MSVOA_X
ClientSampled :
 EB-SOIL-111919

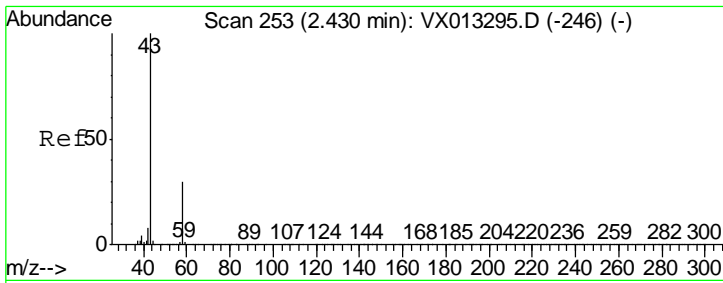
Tgt Ion	Resp	Lower	Upper
168	721397		
99	49.5	40.8	61.2



#6
 Chloroethane
 Concen: Below Cal
 RT: 1.66 min Scan# 127
 Delta R.T. -0.04 min
 Lab File: VX013485.D
 Acq: 20 Nov 2019 18:18

Tgt Ion	Resp	Lower	Upper
64	775		
66	11.8	25.6	38.4



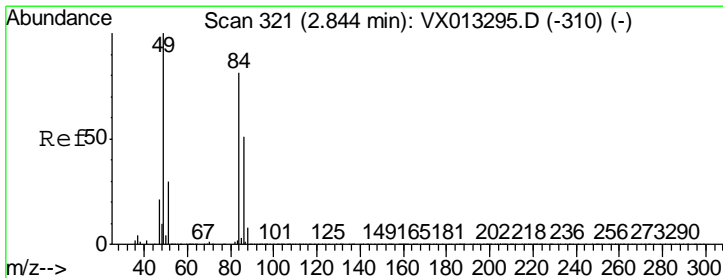
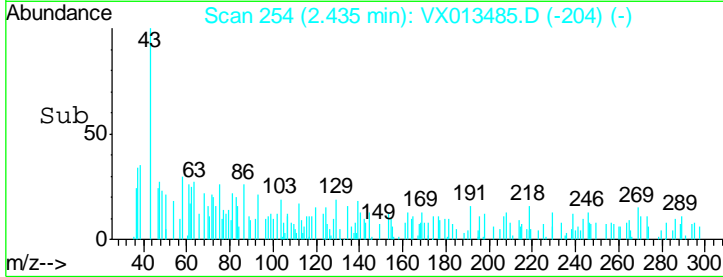
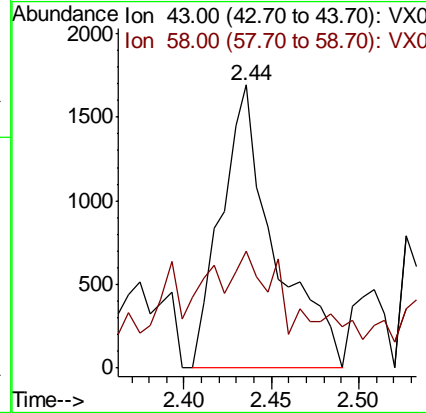
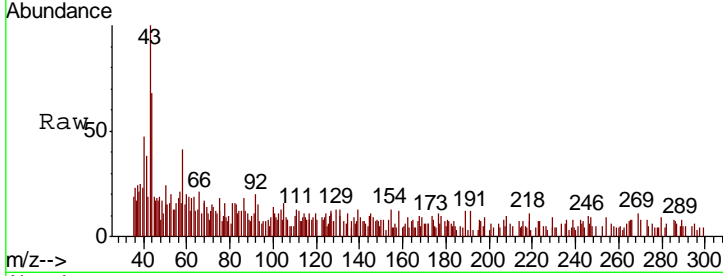


#16
 Acetone
 Concen: 0.839 ug/l
 RT: 2.44 min Scan# 254
 Delta R.T. 0.01 min
 Lab File: VX013485.D
 Acq: 20 Nov 2019 18:18

Instrument :
 MSVOA_X
 ClientSampled :
 EB-SOIL-111919

Tgt Ion: 43 Resp: 3577

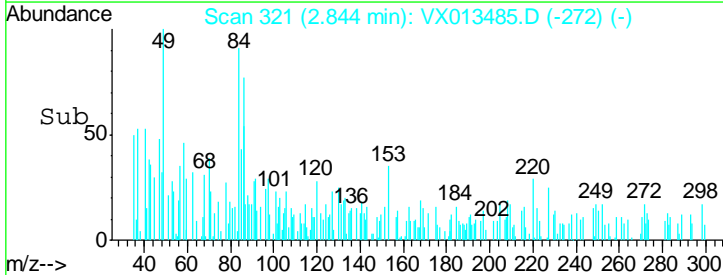
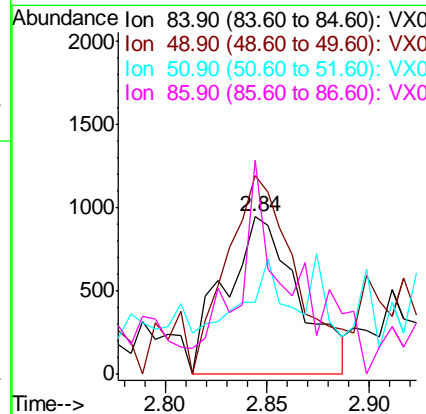
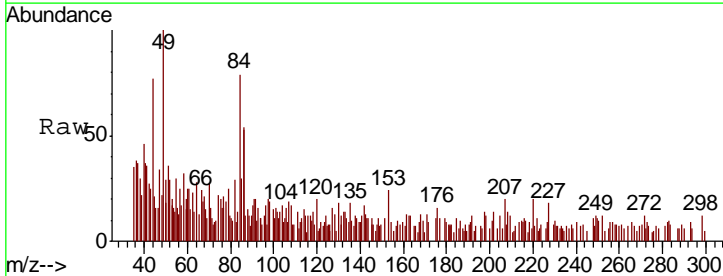
Ion	Ratio	Lower	Upper
43	100		
58	26.5	24.3	36.5

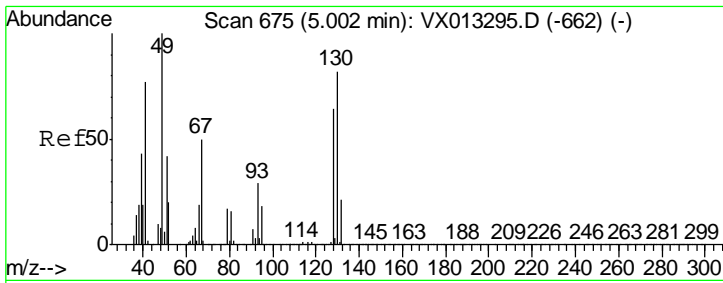


#20
 Methylene Chloride
 Concen: 0.298 ug/l
 RT: 2.84 min Scan# 321
 Delta R.T. -0.00 min
 Lab File: VX013485.D
 Acq: 20 Nov 2019 18:18

Tgt Ion: 84 Resp: 2351

Ion	Ratio	Lower	Upper
84	100		
49	99.0	98.2	147.4
51	22.5	29.9	44.9#
86	119.5	49.9	74.9#

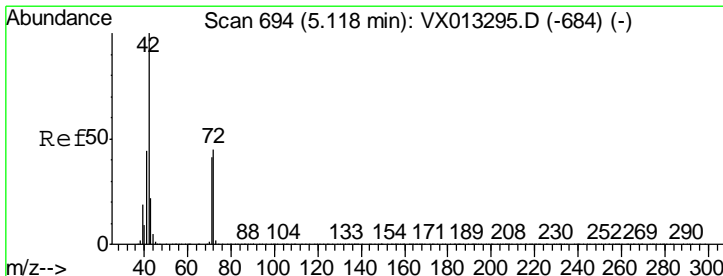
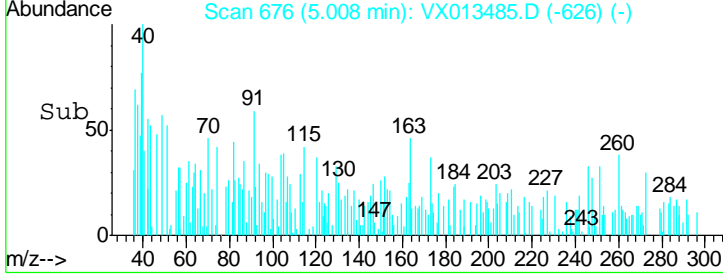
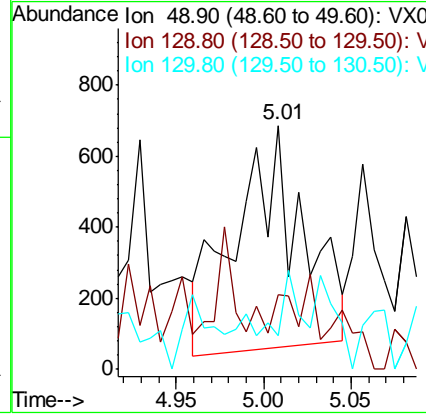
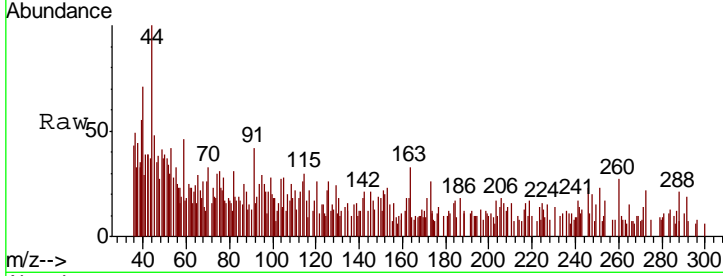




#28
 Bromochloromethane
 Concen: 0.456 ug/l
 RT: 5.01 min Scan# 676
 Delta R.T. 0.01 min
 Lab File: VX013485.D
 Acq: 20 Nov 2019 18:18

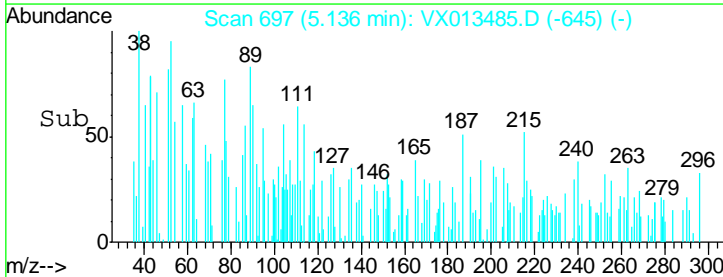
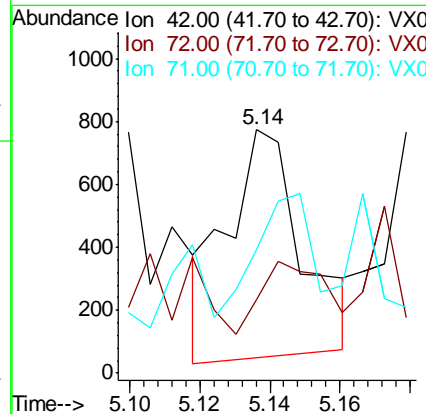
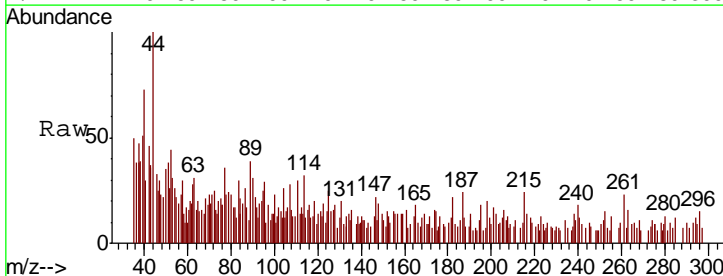
Instrument :
 MSVOA_X
 ClientSampleId :
 EB-SOIL-111919

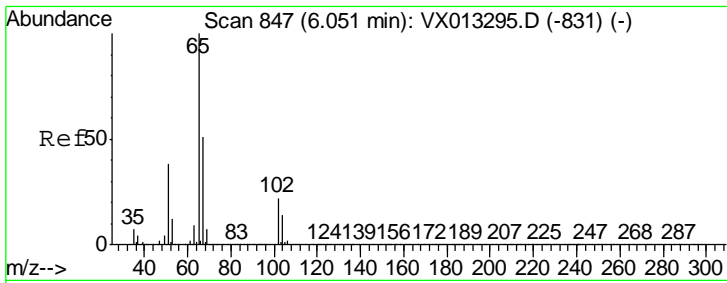
Tgt Ion	Resp	Lower	Upper
49	100		
129	4.9	0.0	5.2
130	11.4	63.8	95.6#



#29
 Tetrahydrofuran
 Concen: 0.281 ug/l
 RT: 5.14 min Scan# 697
 Delta R.T. 0.02 min
 Lab File: VX013485.D
 Acq: 20 Nov 2019 18:18

Tgt Ion	Resp	Lower	Upper
42	100		
72	27.3	35.8	53.8#
71	42.1	33.4	50.0

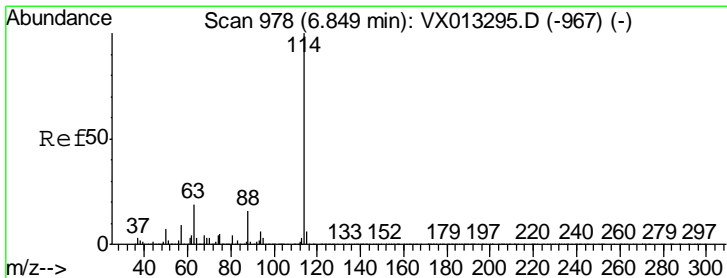
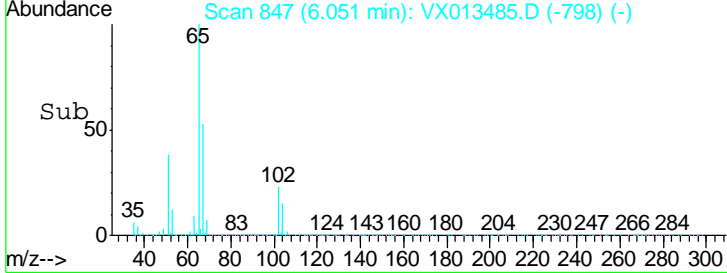
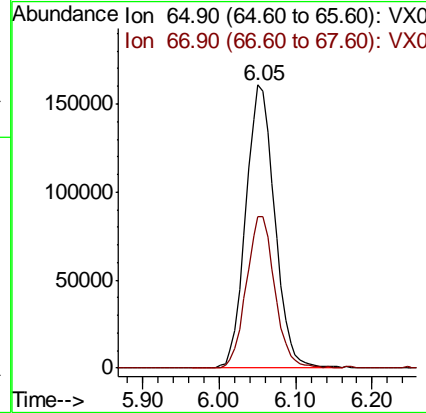
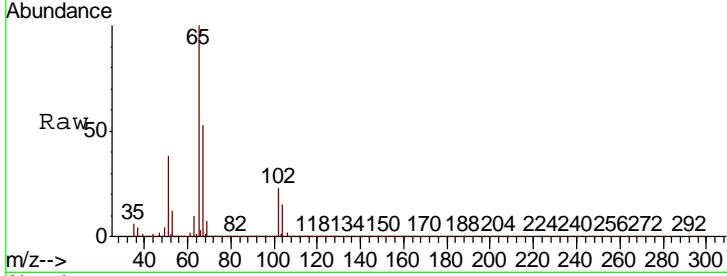




#33
 1,2-Dichloroethane-d4
 Concen: 49.224 ug/l
 RT: 6.05 min Scan# 847
 Delta R.T. -0.00 min
 Lab File: VX013485.D
 Acq: 20 Nov 2019 18:18

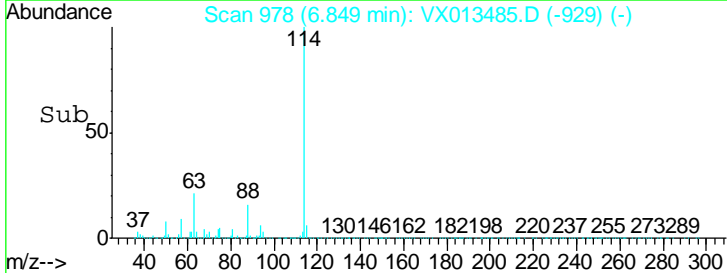
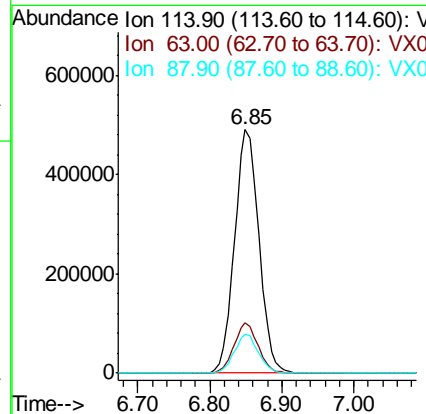
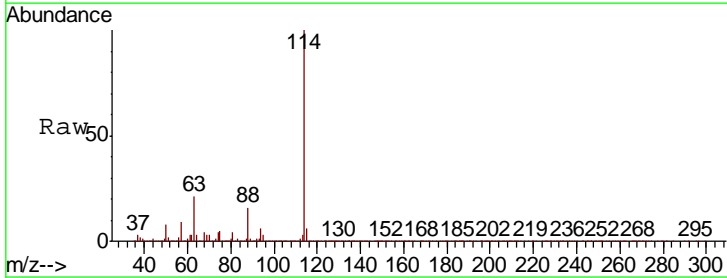
Instrument :
 MSVOA_X
 ClientSampled :
 EB-SOIL-111919

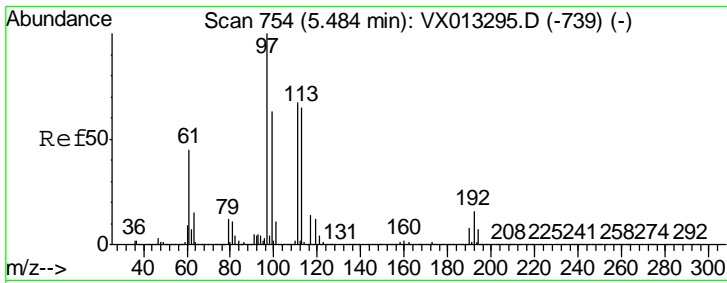
Tgt Ion	Resp	Lower	Upper
65	420687		
67	52.4	0.0	104.2



#34
 1,4-Difluorobenzene
 Concen: 50.000 ug/l
 RT: 6.85 min Scan# 978
 Delta R.T. -0.00 min
 Lab File: VX013485.D
 Acq: 20 Nov 2019 18:18

Tgt Ion	Resp	Lower	Upper
114	1155821		
63	20.8	0.0	38.4
88	15.8	0.0	32.2

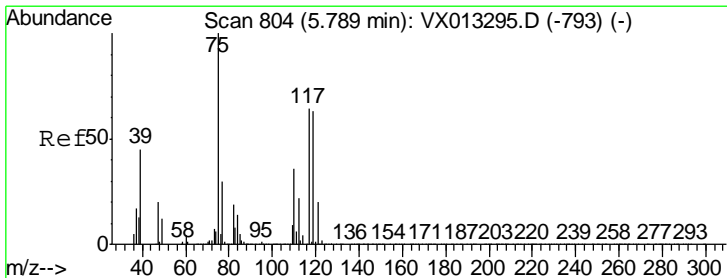
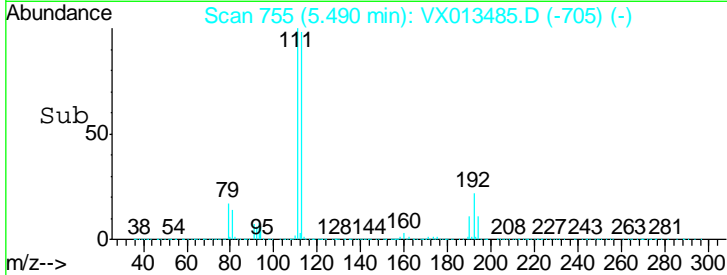
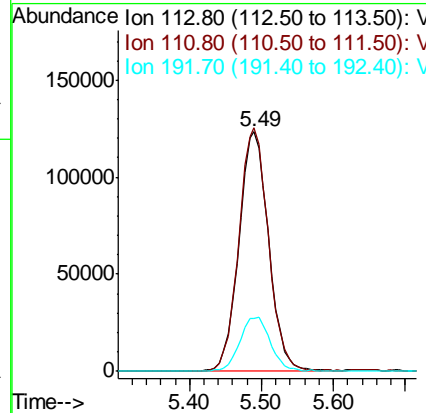
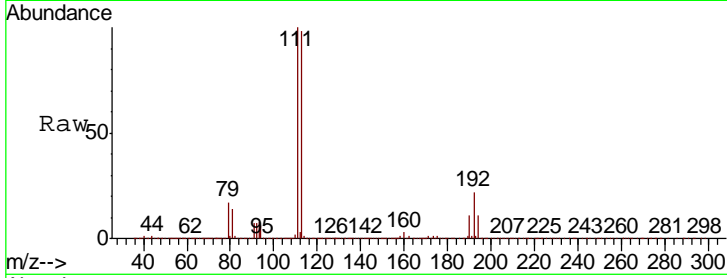




#35
 Dibromofluoromethane
 Concen: 48.498 ug/l
 RT: 5.49 min Scan# 755
 Delta R.T. 0.01 min
 Lab File: VX013485.D
 Acq: 20 Nov 2019 18:18

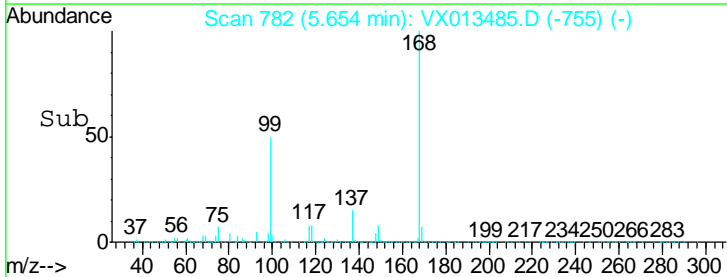
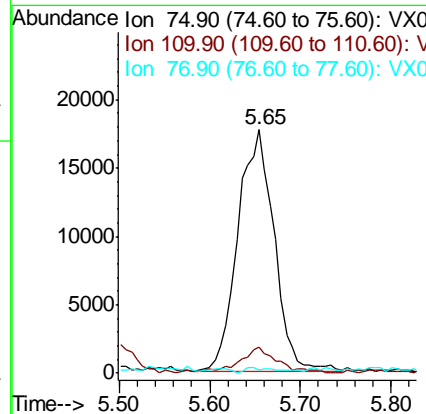
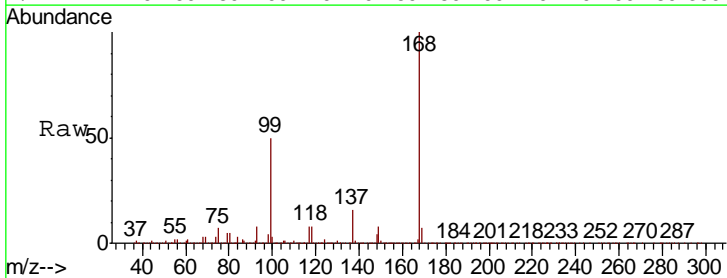
Instrument :
 MSVOA_X
 ClientSampled :
 EB-SOIL-111919

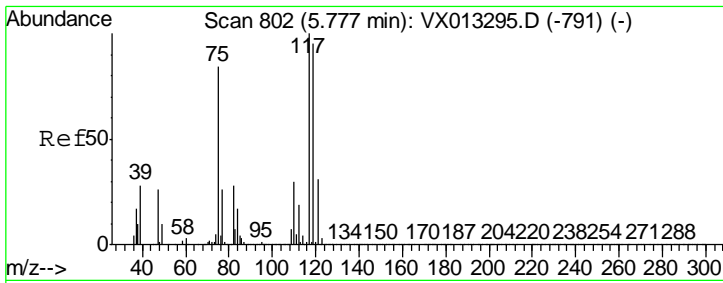
Tgt Ion	Resp	Lower	Upper
113	351586		
111	101.2	81.9	122.9
192	23.4	19.1	28.7



#36
 1,1-Dichloropropene
 Concen: 4.972 ug/l
 RT: 5.65 min Scan# 782
 Delta R.T. -0.13 min
 Lab File: VX013485.D
 Acq: 20 Nov 2019 18:18

Tgt Ion	Resp	Lower	Upper
75	49302		
110	11.4	18.1	54.1#
77	1.9	25.0	37.4#

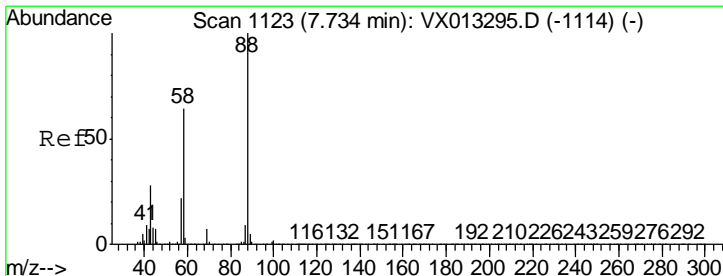
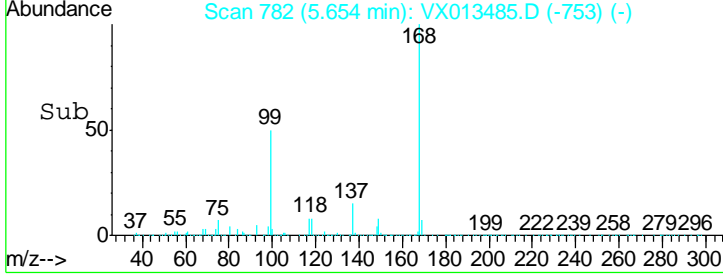
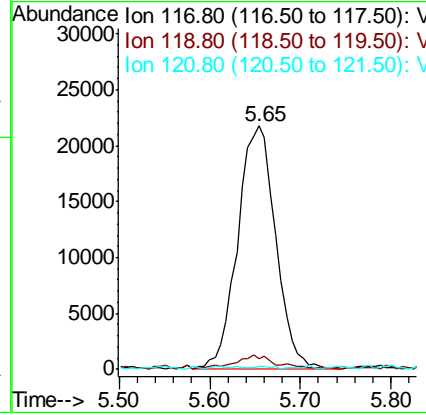
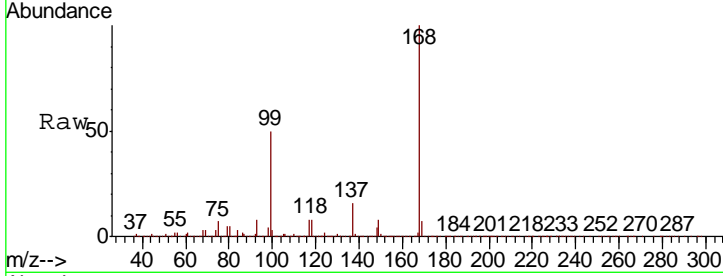




#38
 Carbon Tetrachloride
 Concen: 6.548 ug/l
 RT: 5.65 min Scan# 782
 Delta R.T. -0.12 min
 Lab File: VX013485.D
 Acq: 20 Nov 2019 18:18

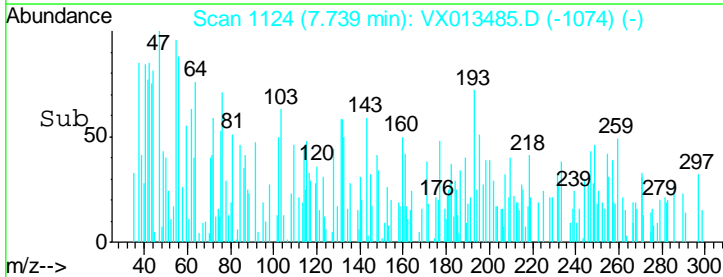
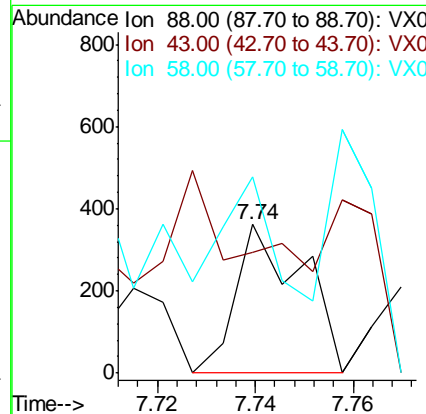
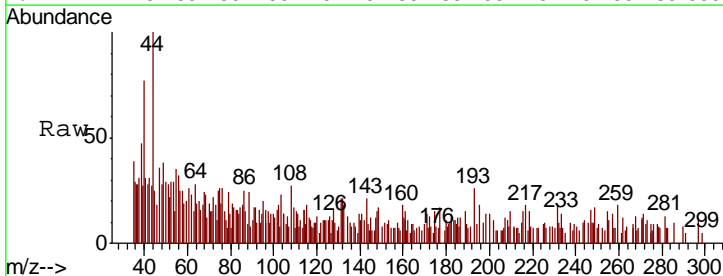
Instrument :
 MSVOA_X
ClientSampled :
 EB-SOIL-111919

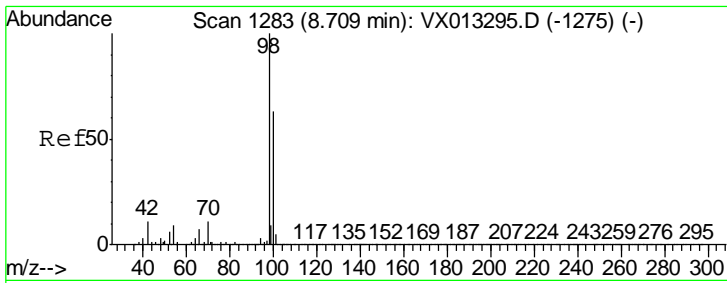
Tgt Ion	Resp	Lower	Upper
117	63489		
119	4.5	76.1	114.1#
121	0.1	24.6	37.0#



#49
 1,4-Dioxane
 Concen: 1.568 ug/l
 RT: 7.74 min Scan# 1124
 Delta R.T. 0.01 min
 Lab File: VX013485.D
 Acq: 20 Nov 2019 18:18

Tgt Ion	Resp	Lower	Upper
88	342		
43	49.1	26.6	39.8#
58	60.5	55.0	82.6

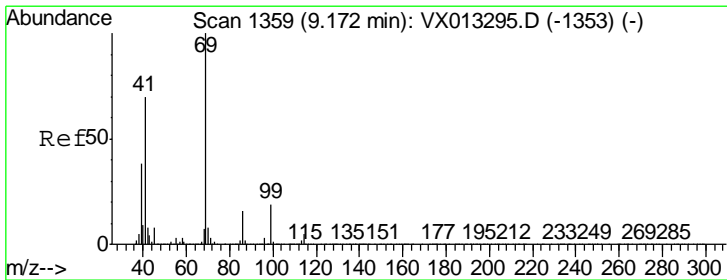
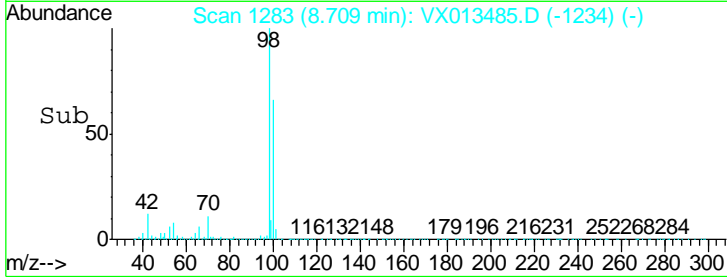
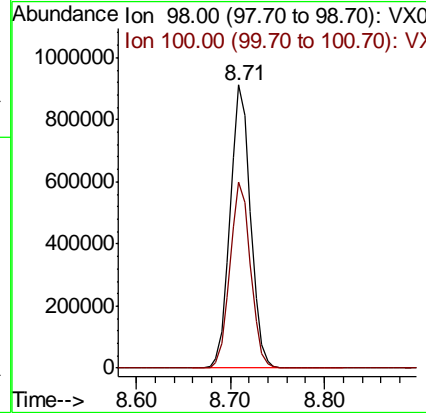
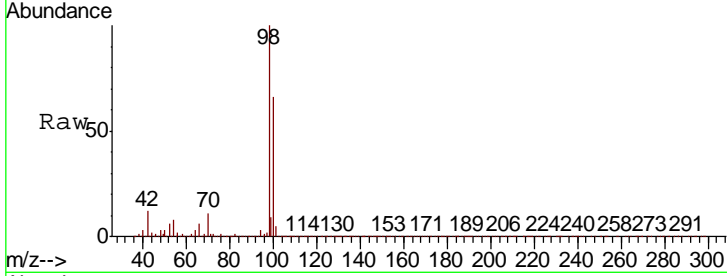




#50
 Toluene-d8
 Concen: 50.047 ug/l
 RT: 8.71 min Scan# 1283
 Delta R.T. -0.00 min
 Lab File: VX013485.D
 Acq: 20 Nov 2019 18:18

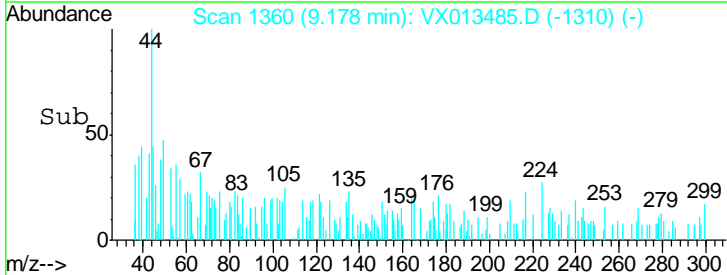
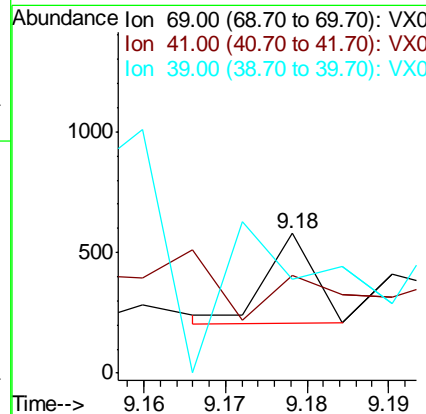
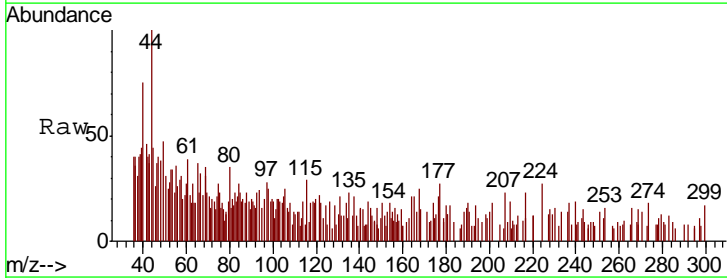
Instrument :
 MSVOA_X
ClientSampled :
 EB-SOIL-111919

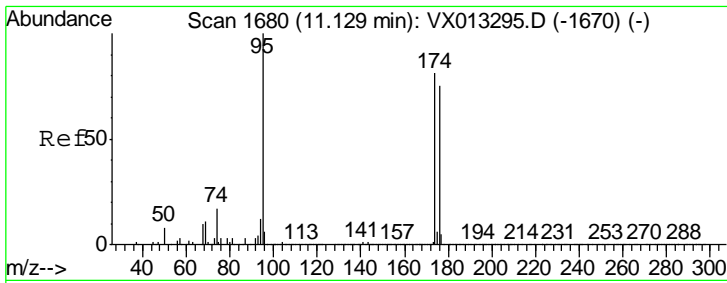
Tgt Ion	Resp	Lower	Upper
98	1367781		
98	100		
100	66.2	52.2	78.2



#56
 Ethyl methacrylate
 Concen: 1.574 ug/l
 RT: 9.18 min Scan# 1360
 Delta R.T. 0.01 min
 Lab File: VX013485.D
 Acq: 20 Nov 2019 18:18

Tgt Ion	Resp	Lower	Upper
69	149		
69	100		
41	0.0	56.2	84.2#
39	456.4	31.1	46.7#

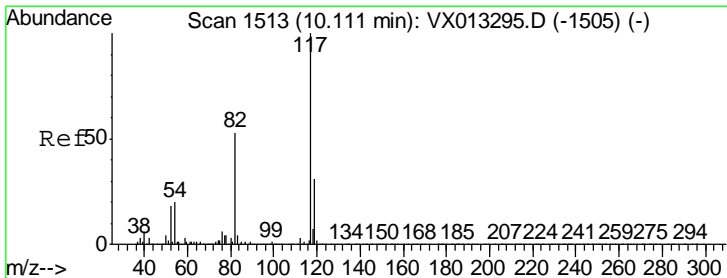
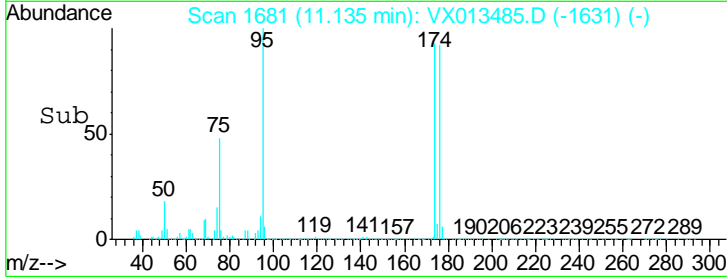
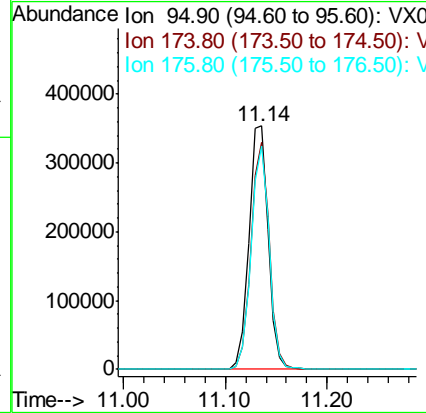
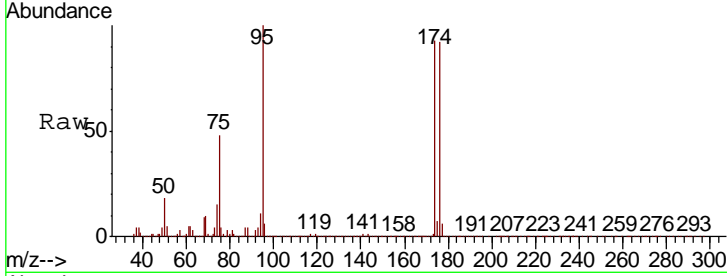




#62
 4-Bromofluorobenzene
 Concen: 46.487 ug/l
 RT: 11.14 min Scan# 1681
 Delta R.T. 0.01 min
 Lab File: VX013485.D
 Acq: 20 Nov 2019 18:18

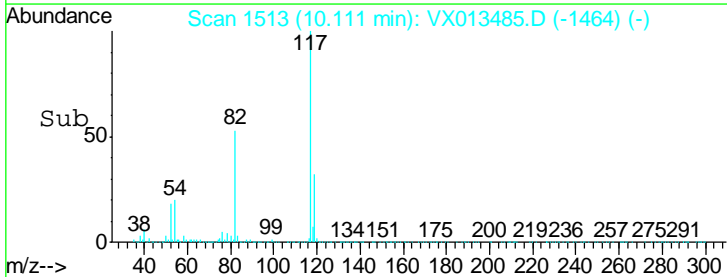
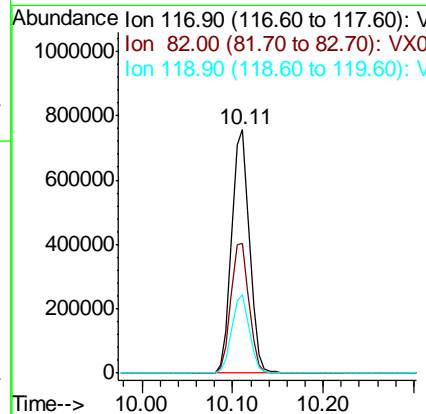
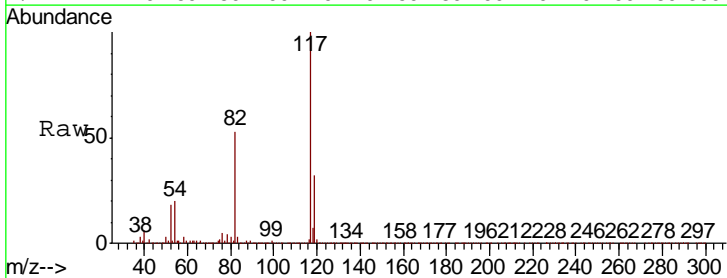
Instrument :
 MSVOA_X
 ClientSampled :
 EB-SOIL-111919

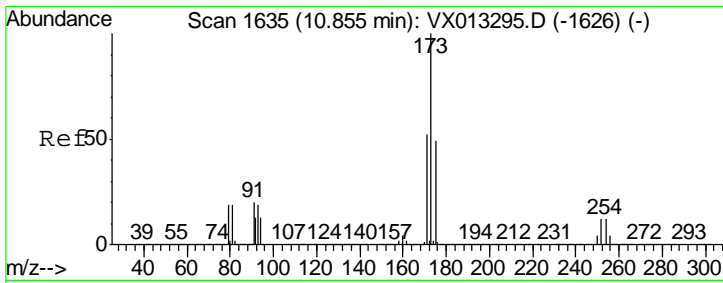
Tgt Ion	Resp	Lower	Upper
95	100		
174	89.3	0.0	179.8
176	87.5	0.0	173.0



#63
 Chlorobenzene-d5
 Concen: 50.000 ug/l
 RT: 10.11 min Scan# 1513
 Delta R.T. -0.00 min
 Lab File: VX013485.D
 Acq: 20 Nov 2019 18:18

Tgt Ion	Resp	Lower	Upper
117	100		
82	53.0	42.6	64.0
119	32.1	24.8	37.2

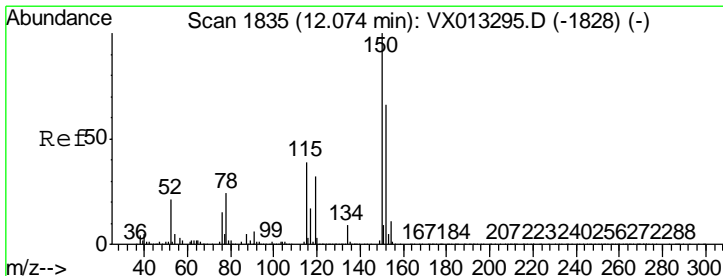
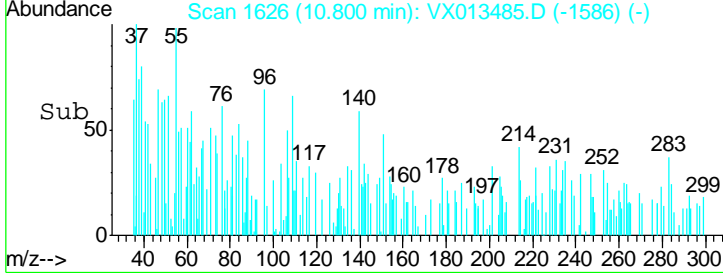
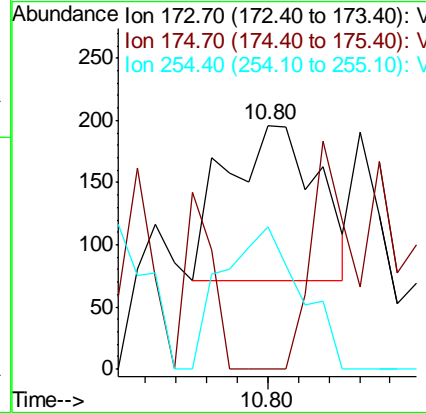
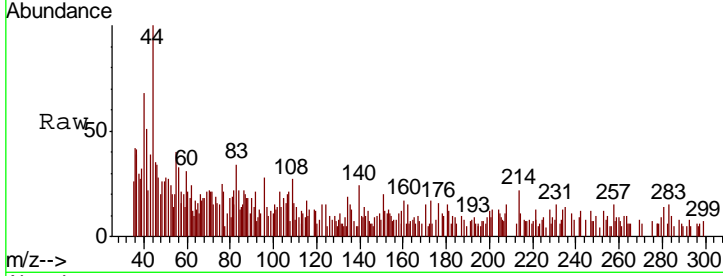




#71
 Bromoform
 Concen: 3.237 ug/l
 RT: 10.80 min Scan# 1626
 Delta R.T. -0.05 min
 Lab File: VX013485.D
 Acq: 20 Nov 2019 18:18

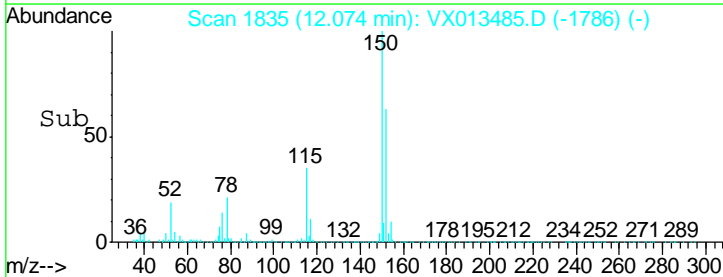
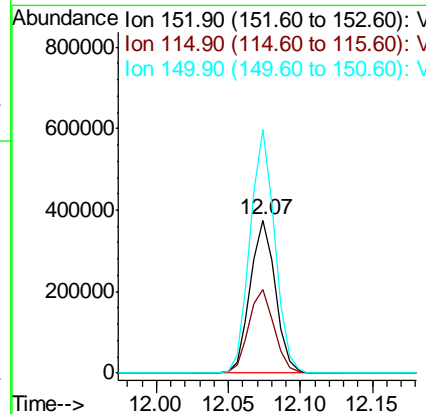
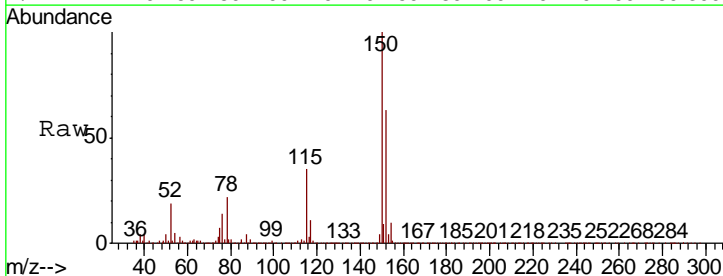
Instrument : MSVOA_X
 ClientSampled : EB-SOIL-111919

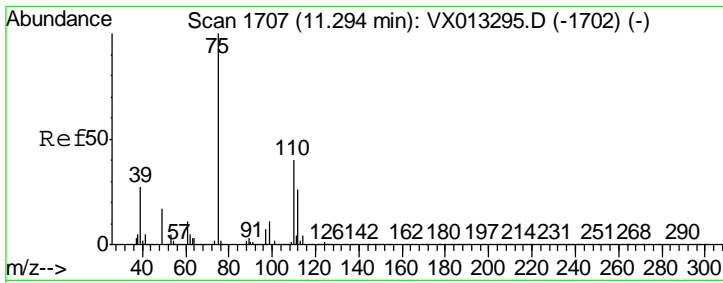
Tgt Ion	Resp	Lower	Upper
173	100		
175	0.0	24.8	74.4#
254	78.2	0.2	0.2#



#72
 1,4-Dichlorobenzene-d4
 Concen: 50.000 ug/l
 RT: 12.07 min Scan# 1835
 Delta R.T. -0.00 min
 Lab File: VX013485.D
 Acq: 20 Nov 2019 18:18

Tgt Ion	Resp	Lower	Upper
152	100		
115	55.5	39.5	118.3
150	156.9	0.0	344.4

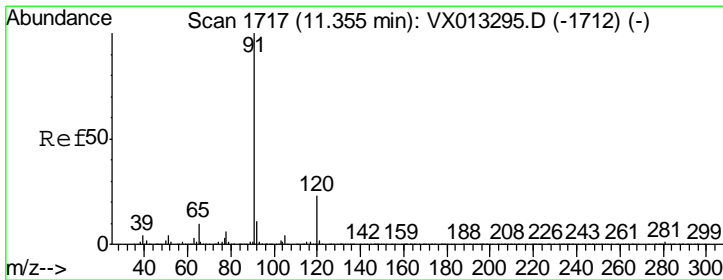
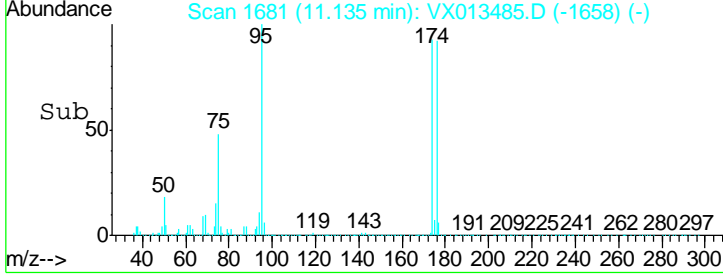
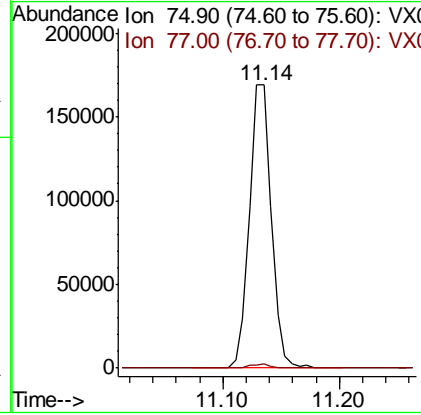
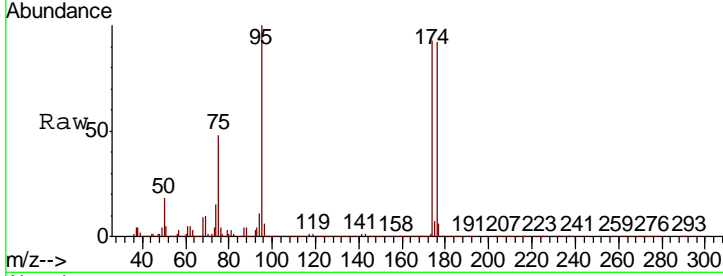




#76
 1,2,3-Trichloropropane
 Concen: 24.394 ug/l
 RT: 11.14 min Scan# 1681
 Delta R.T. -0.16 min
 Lab File: VX013485.D
 Acq: 20 Nov 2019 18:18

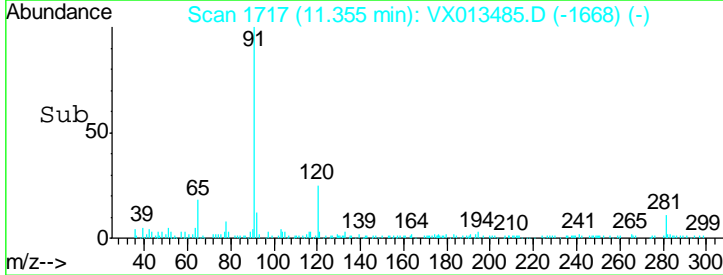
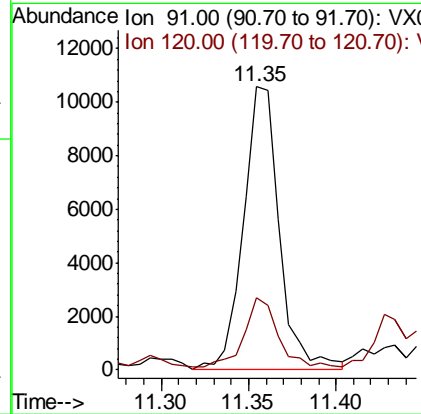
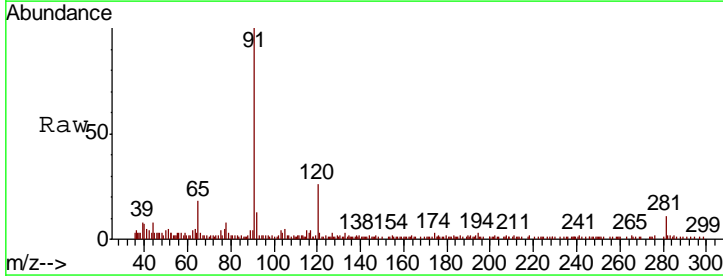
Instrument : MSVOA_X
 ClientSampled : EB-SOIL-111919

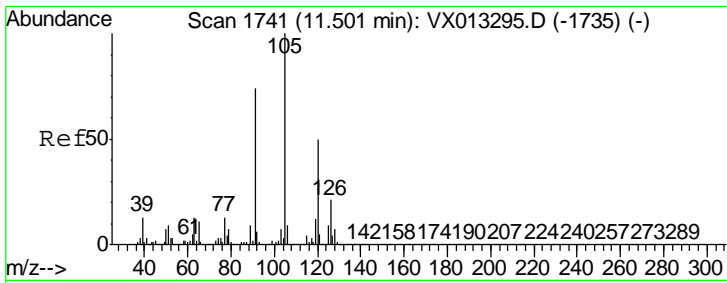
Tgt Ion: 75 Resp: 223162
 Ion Ratio Lower Upper
 75 100
 77 1.3 22.3 66.8#



#78
 n-propylbenzene
 Concen: 0.456 ug/l
 RT: 11.35 min Scan# 1717
 Delta R.T. -0.00 min
 Lab File: VX013485.D
 Acq: 20 Nov 2019 18:18

Tgt Ion: 91 Resp: 15182
 Ion Ratio Lower Upper
 91 100
 120 22.1 11.6 34.8

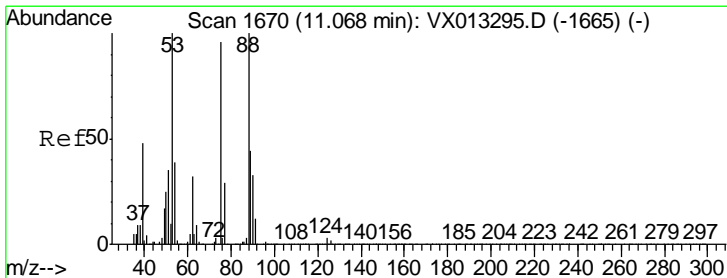
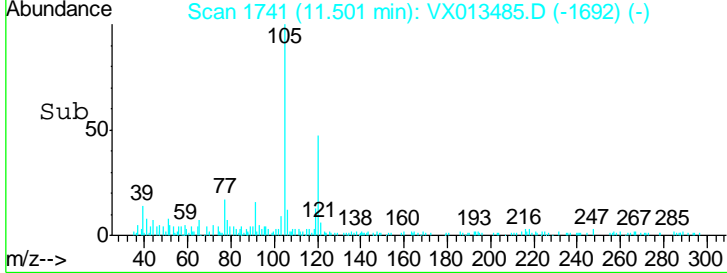
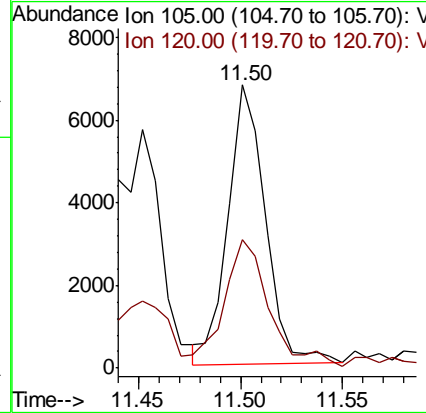
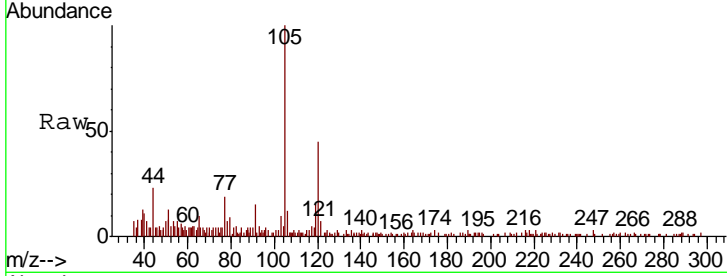




#80
 1,3,5-Trimethylbenzene
 Concen: 0.344 ug/l
 RT: 11.50 min Scan# 1741
 Delta R.T. -0.00 min
 Lab File: VX013485.D
 Acq: 20 Nov 2019 18:18

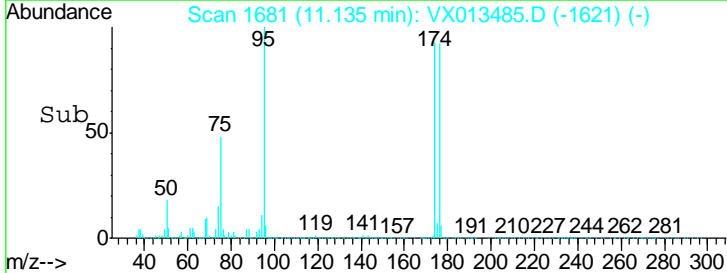
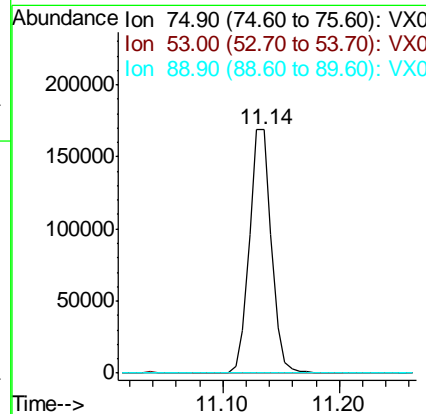
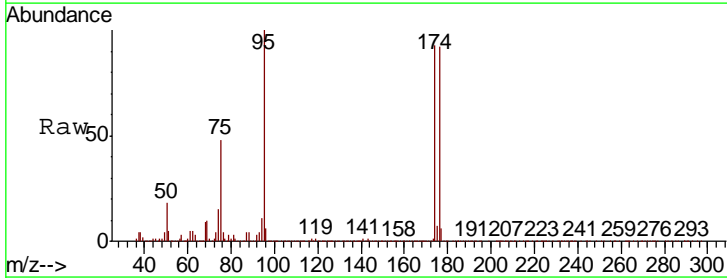
Instrument : MSVOA_X
 ClientSampled : EB-SOIL-111919

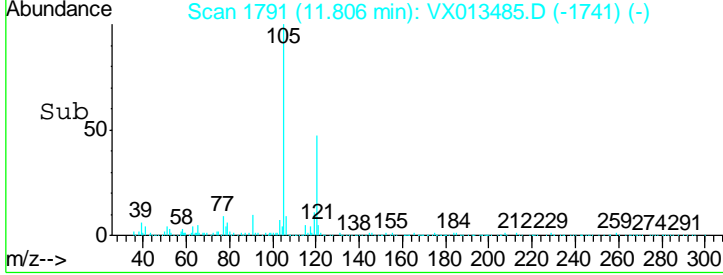
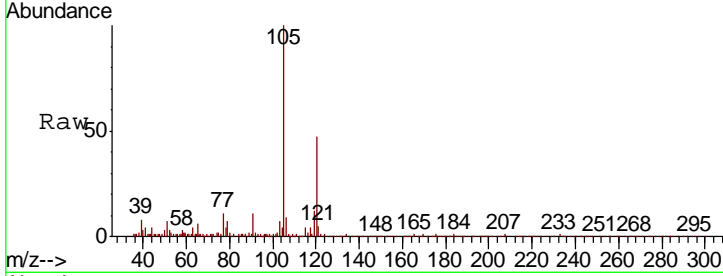
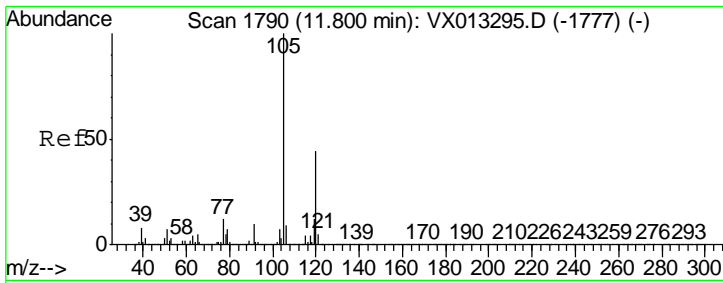
Tgt Ion	Resp	Lower	Upper
105	100		
120	53.3	24.9	74.8



#81
 trans-1,4-Dichloro-2-butene
 Concen: 62.791 ug/l
 RT: 11.14 min Scan# 1681
 Delta R.T. 0.07 min
 Lab File: VX013485.D
 Acq: 20 Nov 2019 18:18

Tgt Ion	Resp	Lower	Upper
75	100		
53	0.4	81.0	121.6#
89	0.1	36.0	54.0#





#84
 1,2,4-Trimethylbenzene
 Concen: 1.811 ug/l
 RT: 11.81 min Scan# 1791
 Delta R.T. 0.01 min
 Lab File: VX013485.D
 Acq: 20 Nov 2019 18:18

Instrument : MSVOA_X
 ClientSampled : EB-SOIL-111919

Tot Ion: 105 Resp: 45191

Ion	Ratio	Lower	Upper
105	100		
120	44.7	22.7	68.1

