

Data Path : Z:\VOASRV\HPCHEM1\MSVOA X\DATA\VX112019\
 Data File : VX013481.D
 Acq On : 20 Nov 2019 16:45
 Operator : JC/SP
 Sample : K5958-06
 Misc : 5.0mL/MSVOA X/WATER
 ALS Vial : 15 Sample Multiplier: 1

Instrument :
 MSVOA_X
 Client Sampled :
 MW-4

Manual Integrations
 APPROVED

MMDadoda
 11/21/2019 9:54:18 AM

Quant Time: Nov 21 03:51:28 2019
 Quant Method : Z:\VOASRV\HPCHEM1\MSVOA_X\METHOD\82X103119W.M
 Quant Title : SW846 8260
 QLast Update : Sat Nov 02 07:06:38 2019
 Response via : Initial Calibration

Internal Standards	R.T.	QIon	Response	Conc	Units	Dev(Min)
1) Pentafluorobenzene	5.65	168	723570	50.00	ug/l	0.00
34) 1,4-Difluorobenzene	6.85	114	1153163	50.00	ug/l	0.00
63) Chlorobenzene-d5	10.11	117	1061097	50.00	ug/l	0.00
72) 1,4-Dichlorobenzene-d4	12.07	152	506294	50.00	ug/l	0.00

System Monitoring Compounds

33) 1,2-Dichloroethane-d4	6.05	65	416458	48.58	ug/l	0.00
Spiked Amount	50.000		Recovery	=	97.16%	
35) Dibromofluoromethane	5.49	113	346689	47.93	ug/l	0.00
Spiked Amount	50.000		Recovery	=	95.86%	
50) Toluene-d8	8.71	98	1394786	51.15	ug/l	0.00
Spiked Amount	50.000		Recovery	=	102.30%	
62) 4-Bromofluorobenzene	11.13	95	493982	50.20	ug/l	0.00
Spiked Amount	50.000		Recovery	=	100.40%	

Target Compounds

						Qvalue
11) Tert butyl alcohol	3.02	59	23145	10.244	ug/l #	72
16) Acetone	2.43	43	17104	4.000	ug/l	91
30) Chloroform	5.20	83	44201	3.437	ug/l	98
31) Cyclohexane	5.57	56	17273	1.474	ug/l #	95
39) Methylcyclohexane	7.46	83	75591	6.132	ug/l	99
44) Trichloroethene	7.21	130	8773	1.034	ug/l	91
64) Tetrachloroethene	9.33	164	21132	2.782	ug/l #	84
67) Ethyl Benzene	10.25	91	7565898	204.063	ug/l	96
68) m/p-Xylenes	10.36	106	3471608	247.584	ug/l	96
69) o-Xylene	10.70	106	187181	13.635	ug/l	98
73) Isopropylbenzene	11.01	105	5801321	172.823	ug/l	98
78) n-propylbenzene	11.35	91	11466846	306.659	ug/l	92
80) 1,3,5-Trimethylbenzene	11.50	105	12255614	438.320	ug/l	85
83) tert-Butylbenzene	11.77	119	522688	18.571	ug/l	87
84) 1,2,4-Trimethylbenzene	11.80	105	20917849m	745.778	ug/l	
85) sec-Butylbenzene	11.94	105	2661772	82.285	ug/l #	77
86) p-Isopropyltoluene	12.06	119	2527789	84.862	ug/l	99
88) 1,4-Dichlorobenzene	12.09	146	11458	0.705	ug/l #	67
89) n-Butylbenzene	12.39	91	2527535	97.245	ug/l #	42
95) Naphthalene	13.83	128	4579732	131.239	ug/l	99

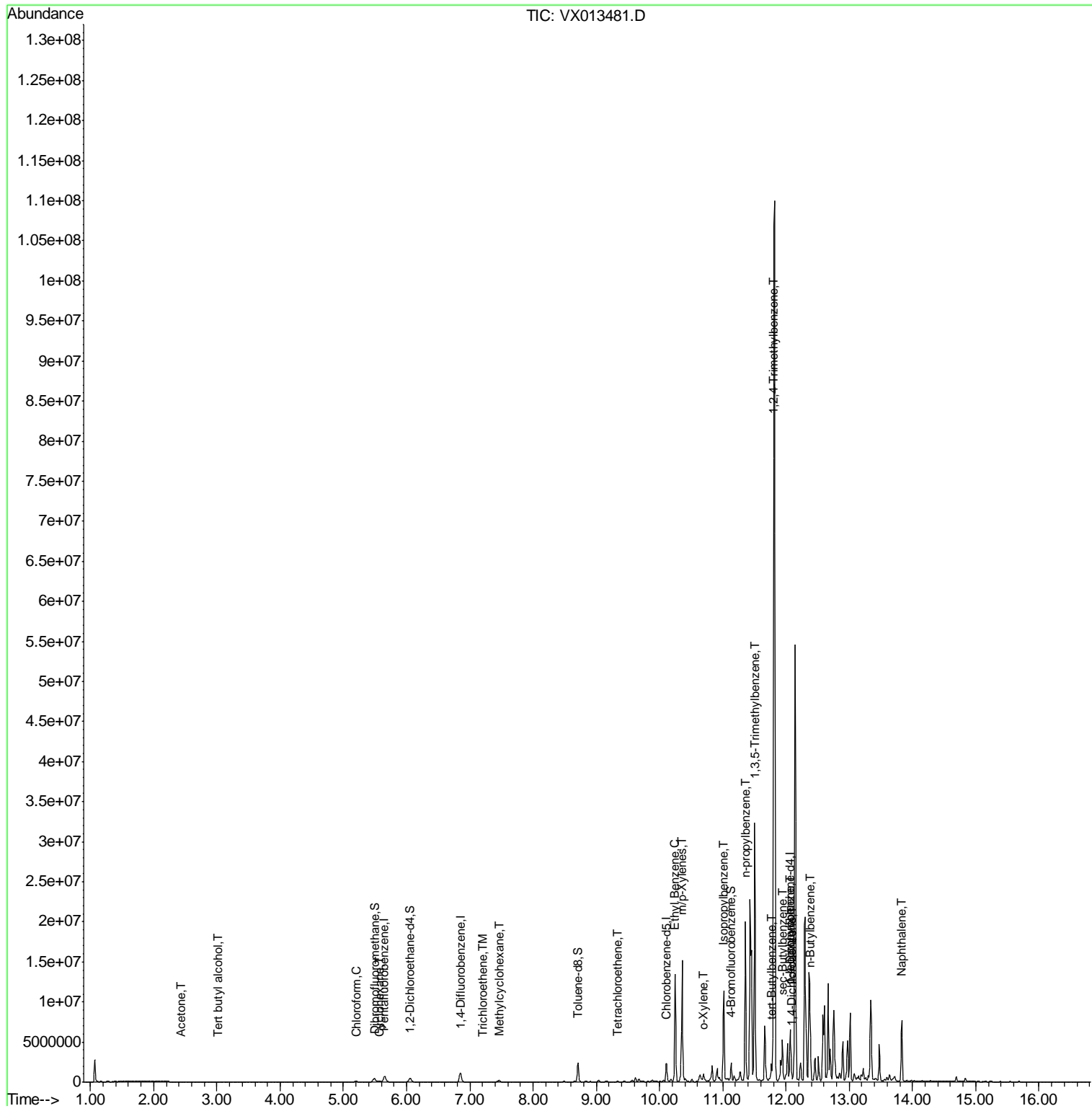
(#) = qualifier out of range (m) = manual integration (+) = signals summed

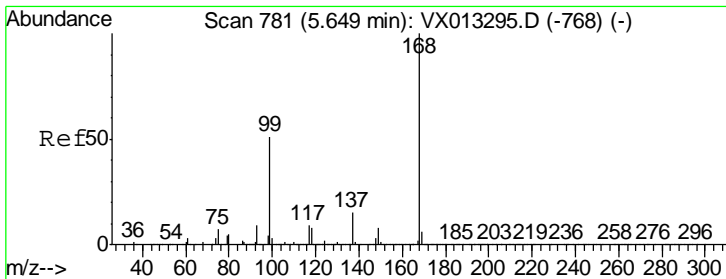
Data Path : Z:\VOASRV\HPCHEM1\MSVOA X\DATA\VX112019\
 Data File : VX013481.D
 Acq On : 20 Nov 2019 16:45
 Operator : JC/SP
 Sample : K5958-06
 Misc : 5.0mL/MSVOA X/WATER
 ALS Vial : 15 Sample Multiplier: 1

Instrument :
 MSVOA_X
 Client Sampled :
 MW-4

Manual Integrations
APPROVED
 MMDadoda
 11/21/2019 9:54:18 AM

Quant Time: Nov 21 03:51:28 2019
 Quant Method : Z:\VOASRV\HPCHEM1\MSVOA_X\METHOD\82X103119W.M
 Quant Title : SW846 8260
 QLast Update : Sat Nov 02 07:06:38 2019
 Response via : Initial Calibration





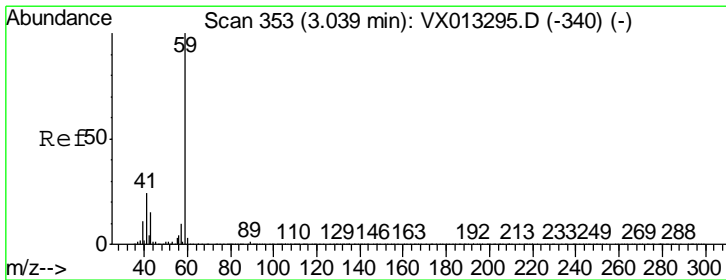
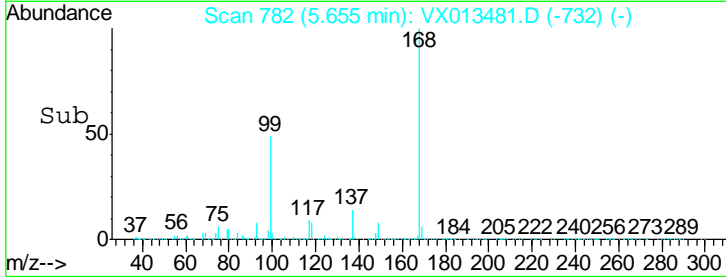
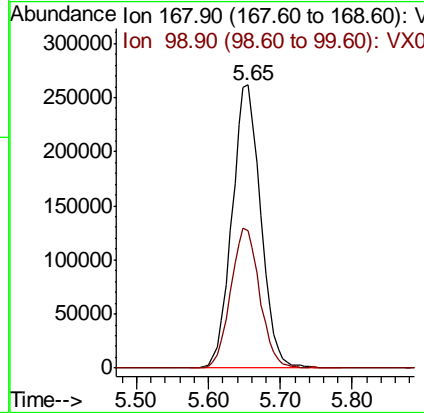
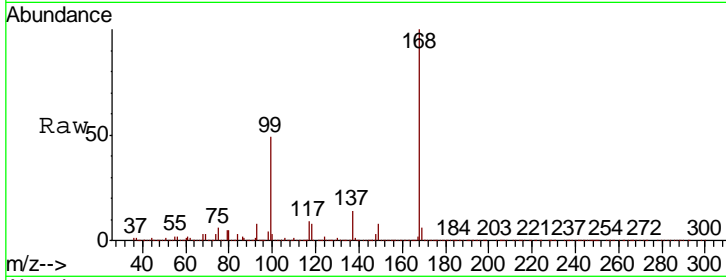
#1
 Pentafluorobenzene
 Concen: 50.000 ug/l
 RT: 5.65 min Scan# 782
 Delta R.T. 0.01 min
 Lab File: VX013481.D
 Acq: 20 Nov 2019 16:45

Instrument : MSVOA_X
 ClientSampled : MW-4

Tgt Ion	Resp	Lower	Upper
168	100		
99	48.6	40.8	61.2

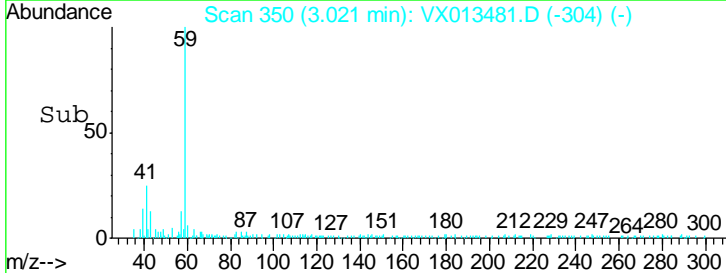
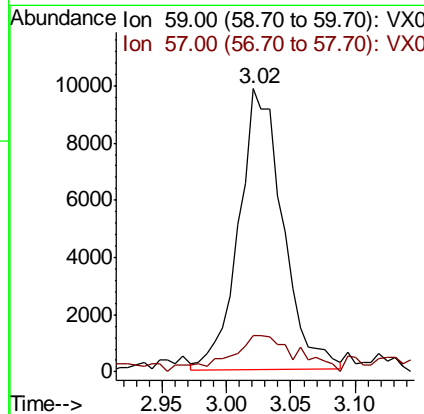
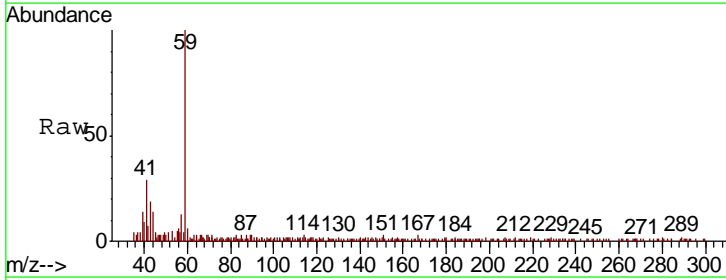
Manual Integrations
 APPROVED

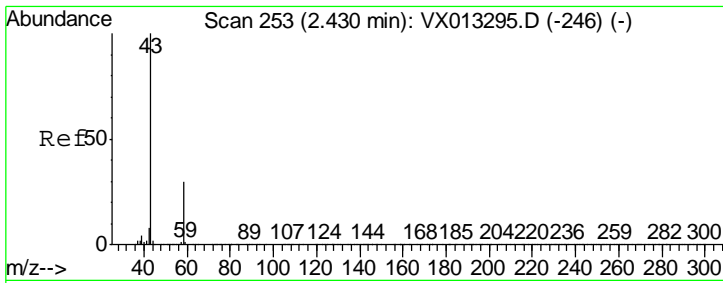
MMDadoda
 11/21/2019 9:54:18 AM



#11
 Tert butyl alcohol
 Concen: 10.244 ug/l
 RT: 3.02 min Scan# 350
 Delta R.T. -0.02 min
 Lab File: VX013481.D
 Acq: 20 Nov 2019 16:45

Tgt Ion	Resp	Lower	Upper
59	100		
57	20.2	8.0	12.0



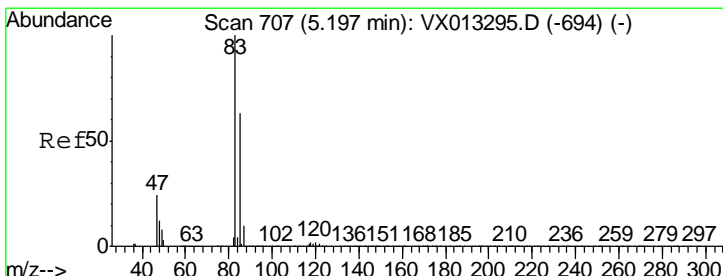
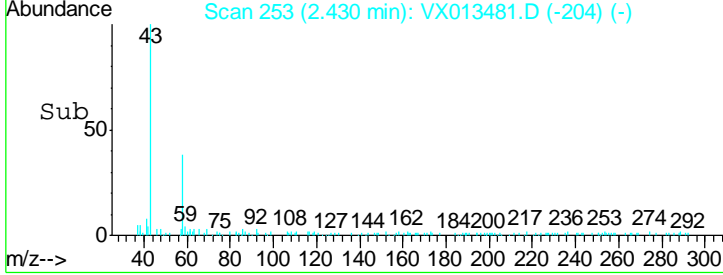
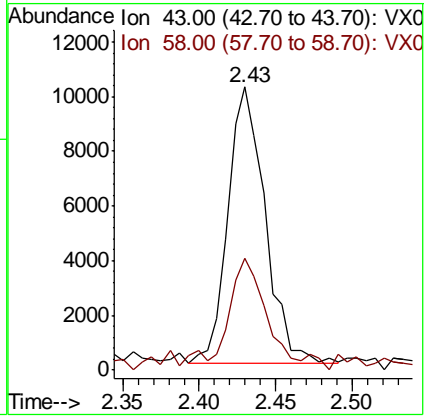
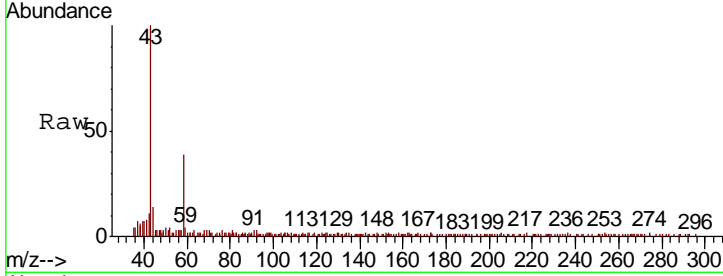


#16
 Acetone
 Concen: 4.000 ug/l
 RT: 2.43 min Scan# 253
 Delta R.T. 0.00 min
 Lab File: VX013481.D
 Acq: 20 Nov 2019 16:45

Instrument : MSVOA_X
 ClientSampled : MW-4

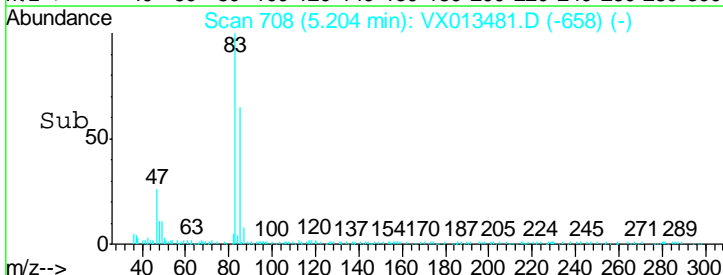
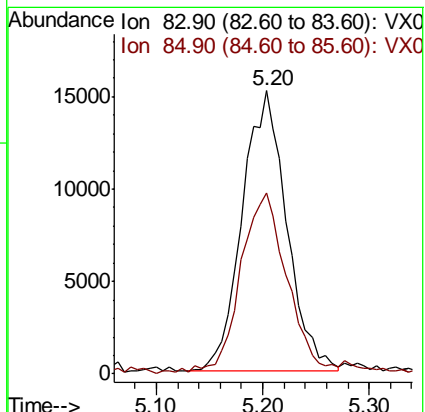
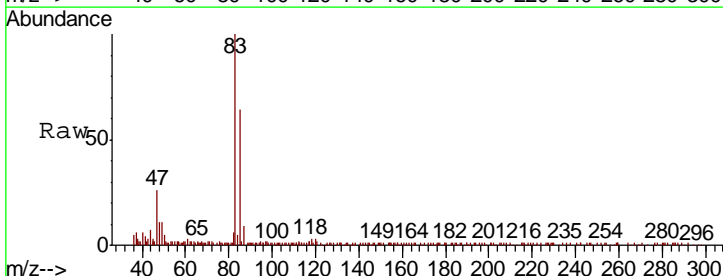
Tgt Ion	Ratio	Lower	Upper
43	100		
58	35.3	24.3	36.5

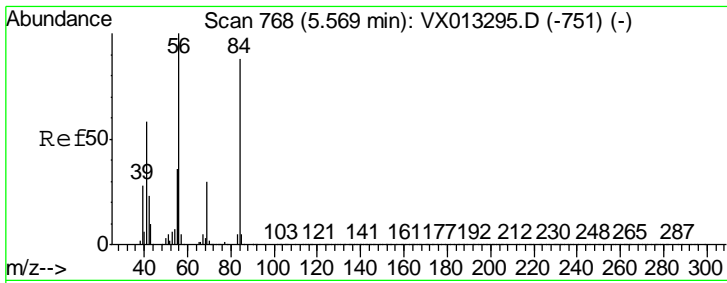
Manual Integrations APPROVED
 MMDadoda
 11/21/2019 9:54:18 AM



#30
 Chloroform
 Concen: 3.437 ug/l
 RT: 5.20 min Scan# 708
 Delta R.T. 0.01 min
 Lab File: VX013481.D
 Acq: 20 Nov 2019 16:45

Tgt Ion	Ratio	Lower	Upper
83	100		
85	64.1	50.2	75.4





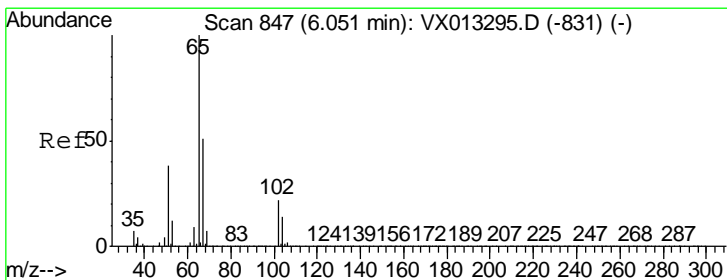
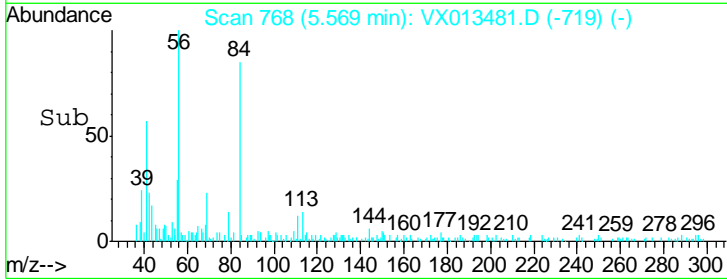
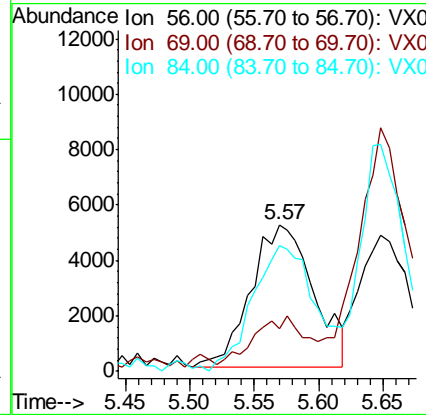
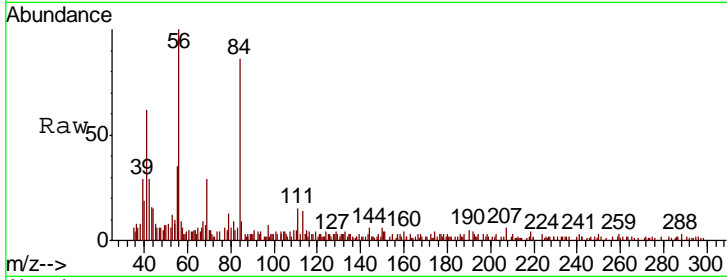
#31
 Cyclohexane
 Concen: 1.474 ug/l
 RT: 5.57 min Scan# 768
 Delta R.T. 0.00 min
 Lab File: VX013481.D
 Acq: 20 Nov 2019 16:45

Instrument :
 MSVOA_X
 ClientSampled :
 MW-4

Tgt Ion	Resp	Lower	Upper
56	17273		
69	22.1	23.7	35.5#
84	86.1	70.6	105.8

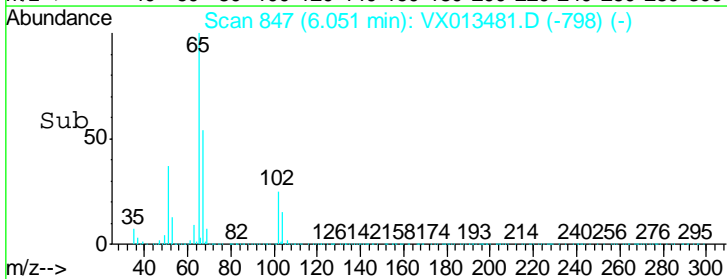
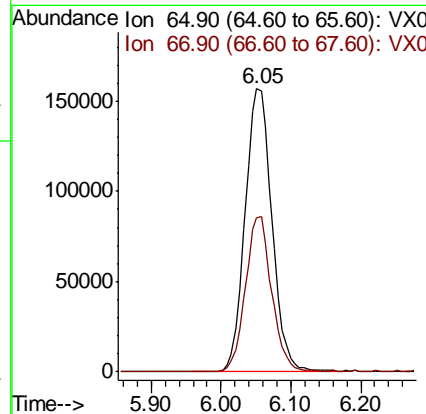
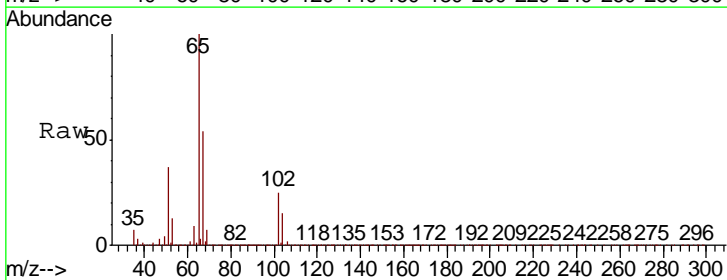
Manual Integrations
 APPROVED

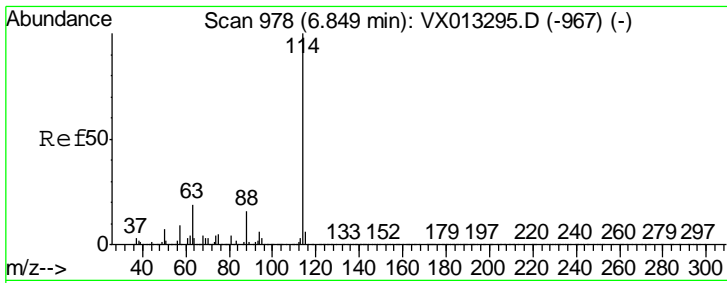
MMDadoda
 11/21/2019 9:54:18 AM



#33
 1,2-Dichloroethane-d4
 Concen: 48.583 ug/l
 RT: 6.05 min Scan# 847
 Delta R.T. 0.00 min
 Lab File: VX013481.D
 Acq: 20 Nov 2019 16:45

Tgt Ion	Resp	Lower	Upper
65	416458		
67	53.4	0.0	104.2





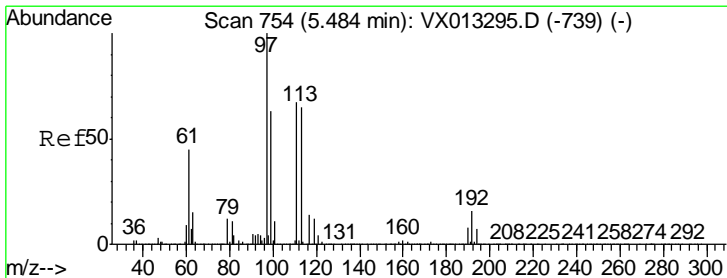
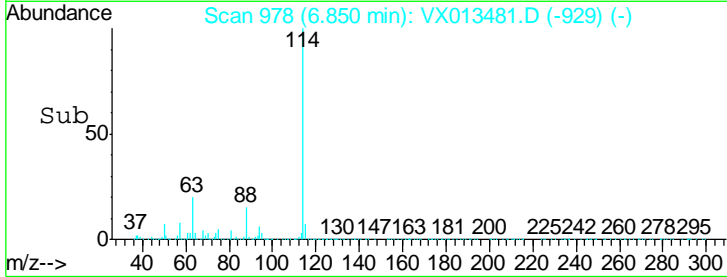
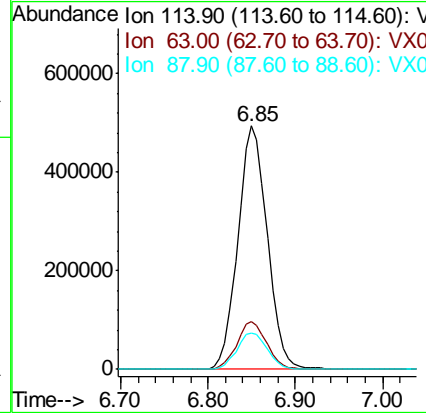
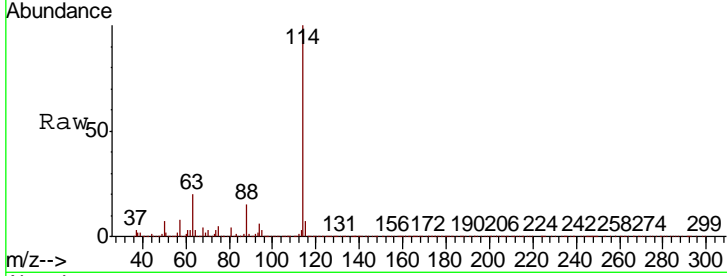
#34
 1,4-Difluorobenzene
 Concen: 50.000 ug/l
 RT: 6.85 min Scan# 978
 Delta R.T. 0.00 min
 Lab File: VX013481.D
 Acq: 20 Nov 2019 16:45

Instrument : MSVOA_X
 ClientSampled : MW-4

Tgt Ion	Resp	Lower	Upper
114	100		
63	19.8	0.0	38.4
88	15.0	0.0	32.2

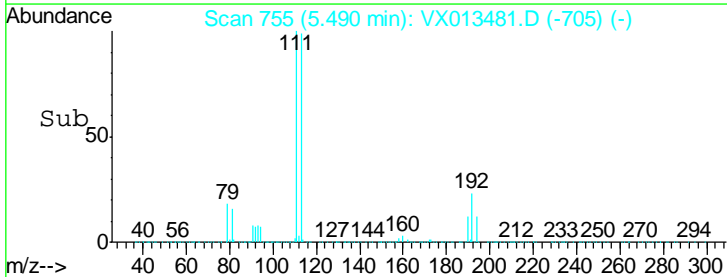
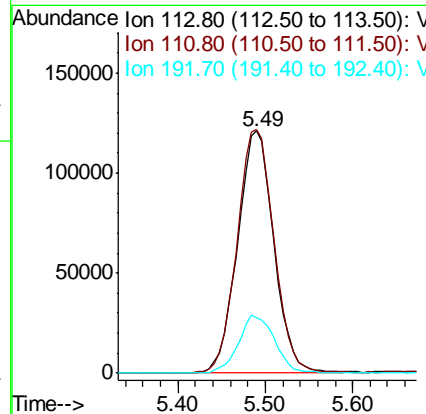
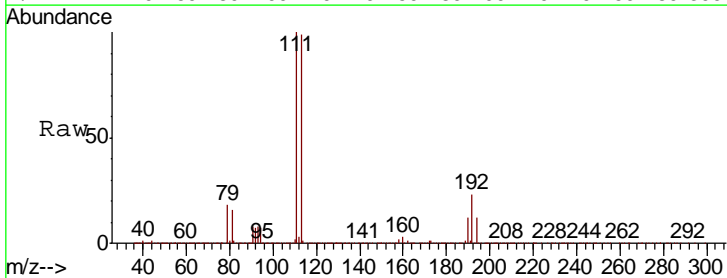
Manual Integrations
 APPROVED

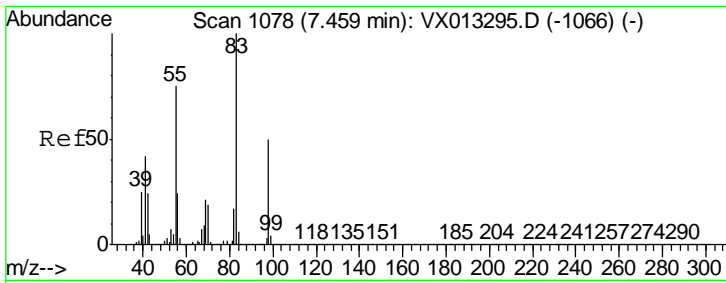
MMDadoda
 11/21/2019 9:54:18 AM



#35
 Dibromofluoromethane
 Concen: 47.933 ug/l
 RT: 5.49 min Scan# 755
 Delta R.T. 0.01 min
 Lab File: VX013481.D
 Acq: 20 Nov 2019 16:45

Tgt Ion	Resp	Lower	Upper
113	100		
111	102.8	81.9	122.9
192	23.9	19.1	28.7



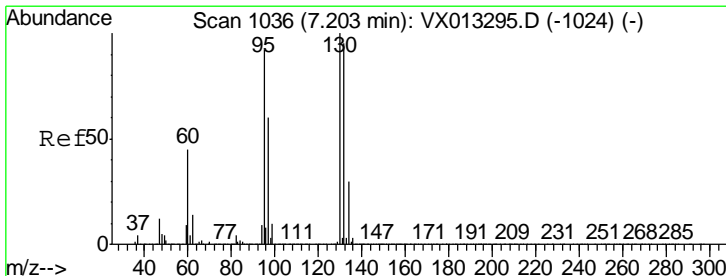
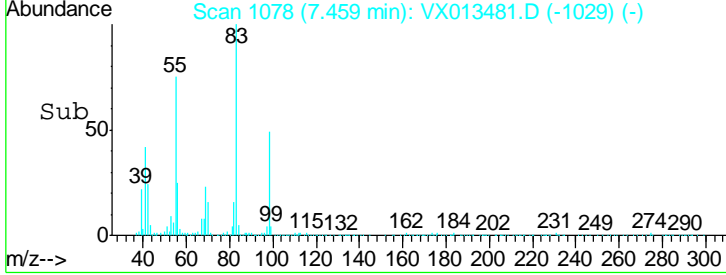
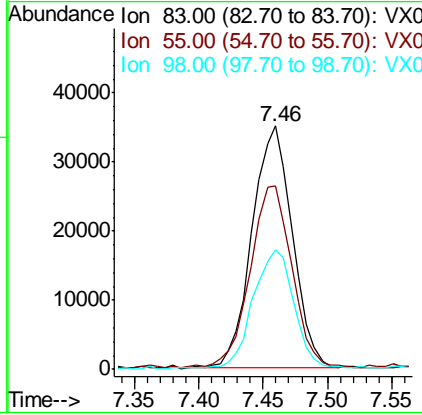
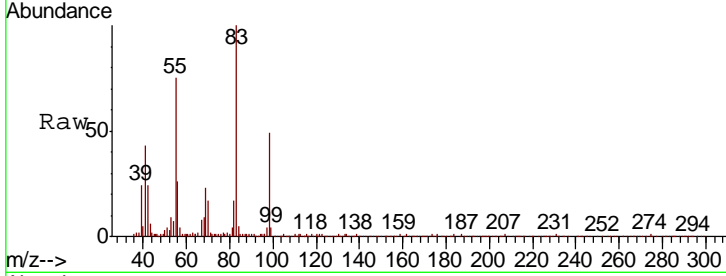


#39
 Methylcyclohexane
 Concen: 6.132 ug/l
 RT: 7.46 min Scan# 1078
 Delta R.T. 0.00 min
 Lab File: VX013481.D
 Acq: 20 Nov 2019 16:45

Tgt Ion	Resp	Lower	Upper
83	7591		
55	74.7	60.3	90.5
98	49.1	40.3	60.5

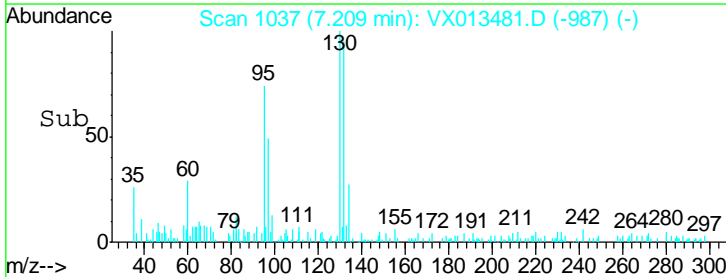
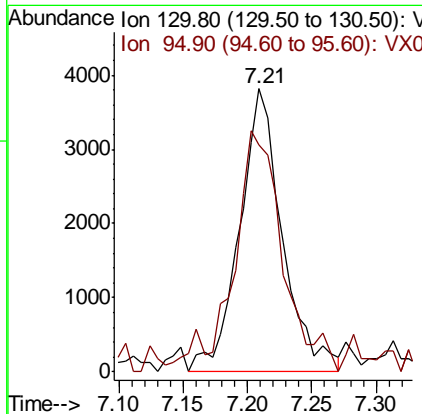
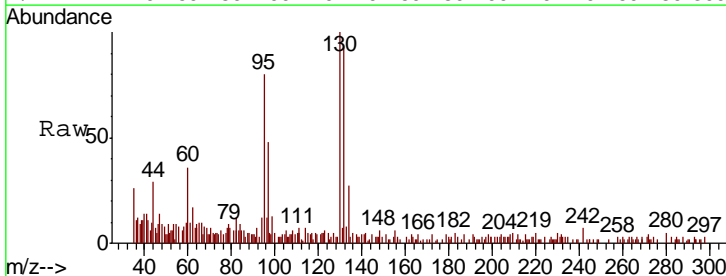
Instrument : MSVOA_X
 ClientSampled : MW-4

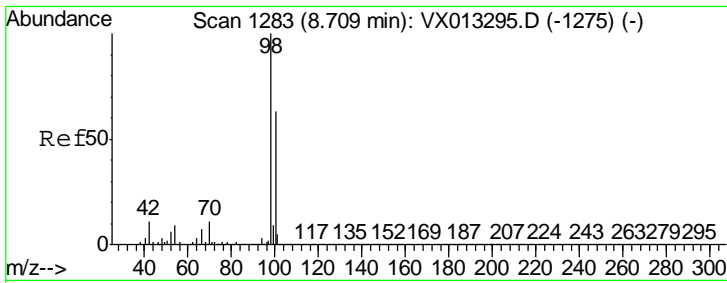
Manual Integrations APPROVED
 MMDadoda
 11/21/2019 9:54:18 AM



#44
 Trichloroethene
 Concen: 1.034 ug/l
 RT: 7.21 min Scan# 1037
 Delta R.T. 0.01 min
 Lab File: VX013481.D
 Acq: 20 Nov 2019 16:45

Tgt Ion	Resp	Lower	Upper
130	8773		
95	83.4	0.0	184.8





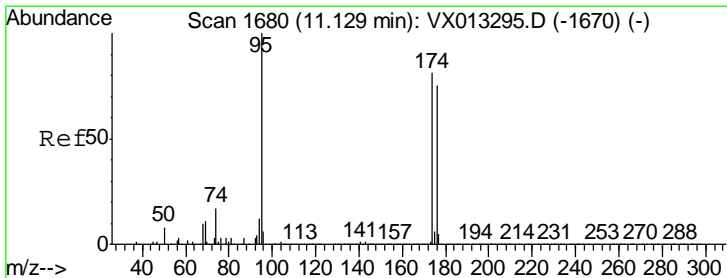
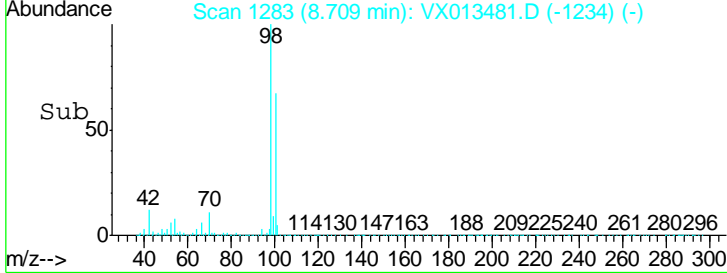
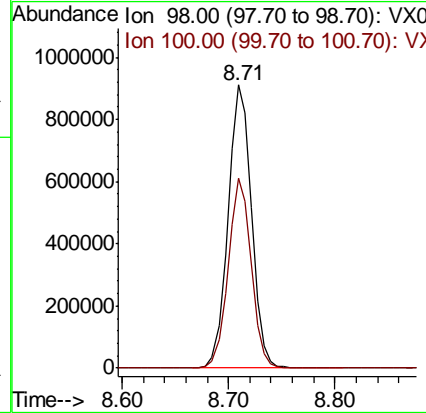
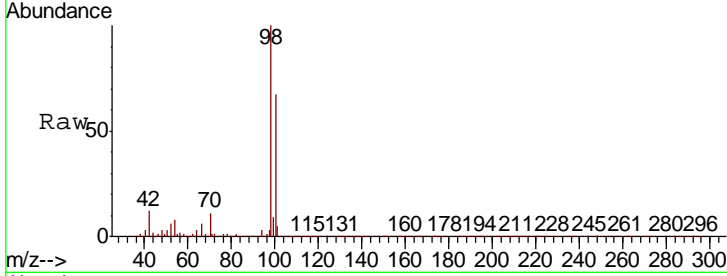
#50
Toluene-d8
Concen: 51.153 ug/l
RT: 8.71 min Scan# 1283
Delta R.T. 0.00 min
Lab File: VX013481.D
Acq: 20 Nov 2019 16:45

Instrument : MSVOA_X
ClientSampled : MW-4

Tgt Ion: 98 Resp: 1394786

Ion	Ratio	Lower	Upper
98	100		
100	66.3	52.2	78.2

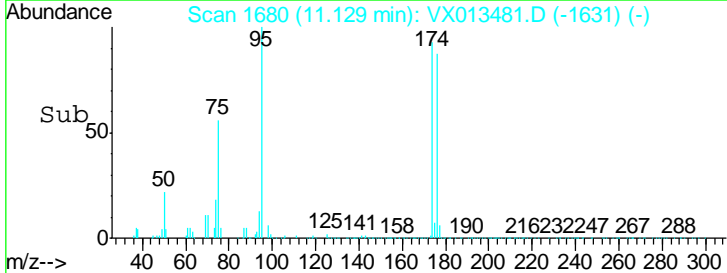
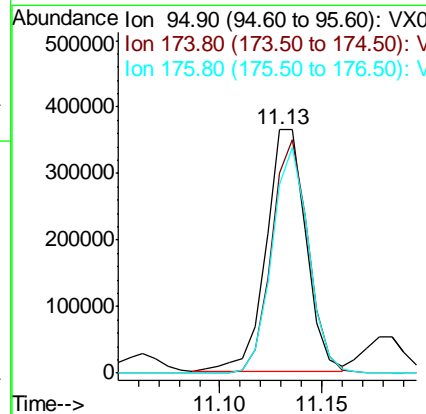
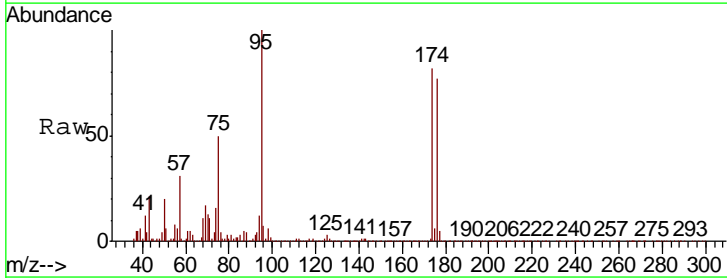
Manual Integrations APPROVED
MMDadoda
11/21/2019 9:54:18 AM

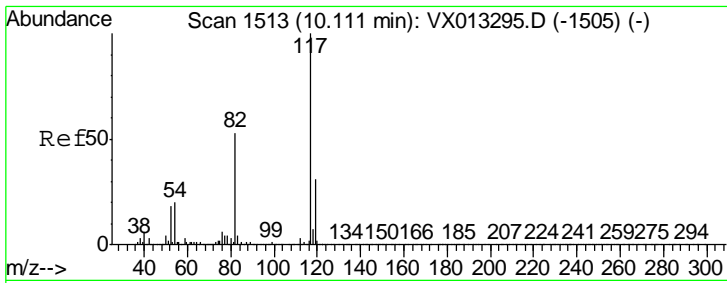


#62
4-Bromofluorobenzene
Concen: 50.198 ug/l
RT: 11.13 min Scan# 1680
Delta R.T. 0.00 min
Lab File: VX013481.D
Acq: 20 Nov 2019 16:45

Tgt Ion: 95 Resp: 493982

Ion	Ratio	Lower	Upper
95	100		
174	89.2	0.0	179.8
176	86.4	0.0	173.0



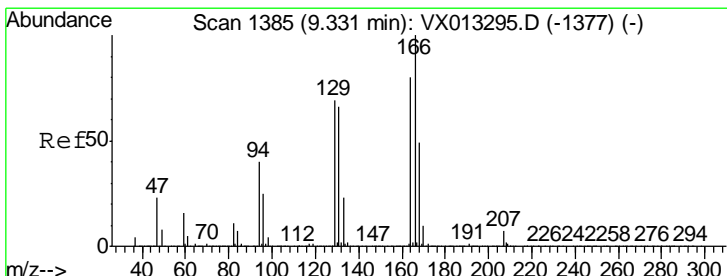
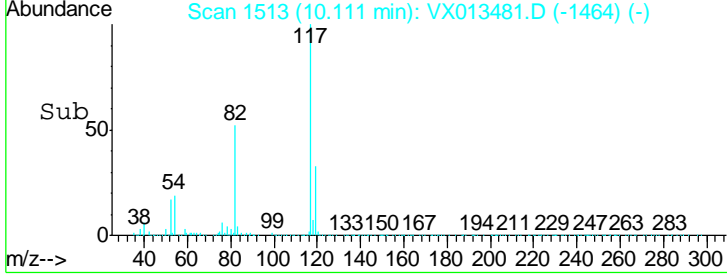
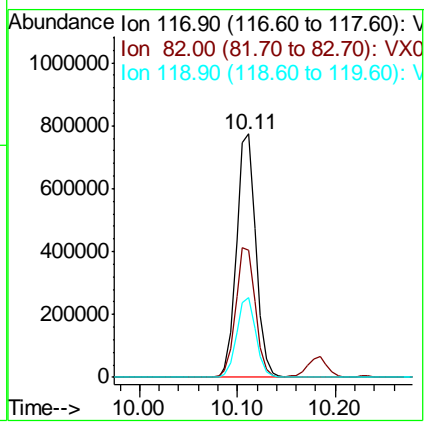
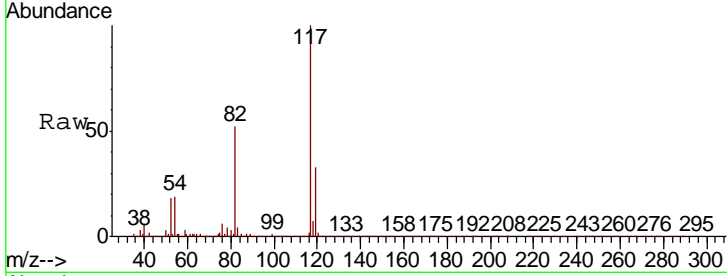


#63
 Chlorobenzene-d5
 Concen: 50.000 ug/l
 RT: 10.11 min Scan# 1513
 Delta R.T. 0.00 min
 Lab File: VX013481.D
 Acq: 20 Nov 2019 16:45

Instrument : MSVOA_X
 Client Sampled : MW-4

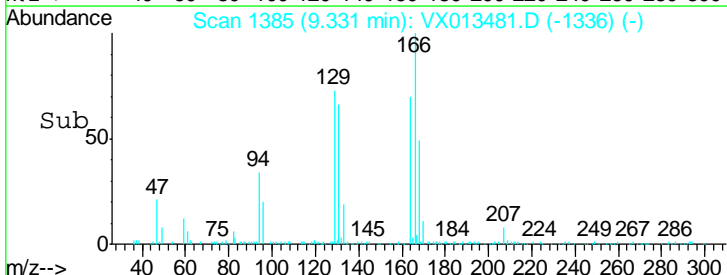
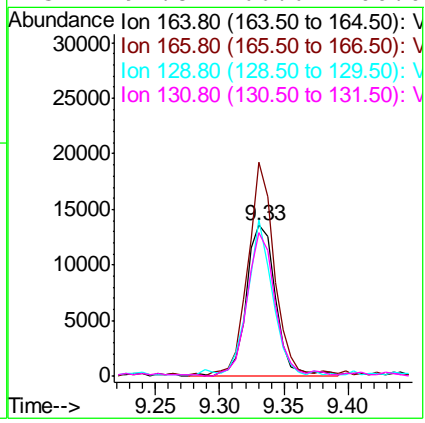
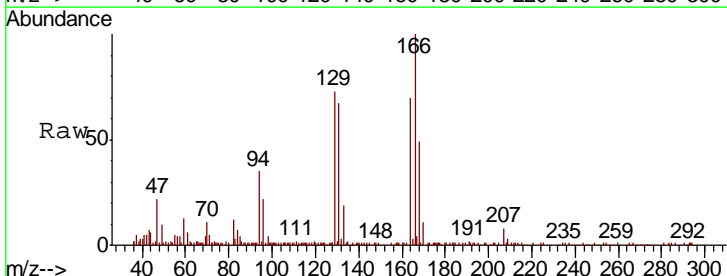
Tgt Ion	Resp	Lower	Upper
117	1061097		
82	51.8	42.6	64.0
119	32.8	24.8	37.2

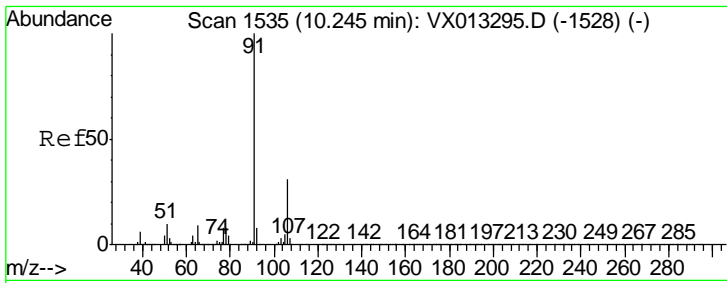
Manual Integrations
APPROVED
 MMDadoda
 11/21/2019 9:54:18 AM



#64
 Tetrachloroethene
 Concen: 2.782 ug/l
 RT: 9.33 min Scan# 1385
 Delta R.T. 0.00 min
 Lab File: VX013481.D
 Acq: 20 Nov 2019 16:45

Tgt Ion	Resp	Lower	Upper
164	21132		
166	142.6	100.4	150.6
129	104.3	69.4	104.2#
131	94.8	66.6	100.0





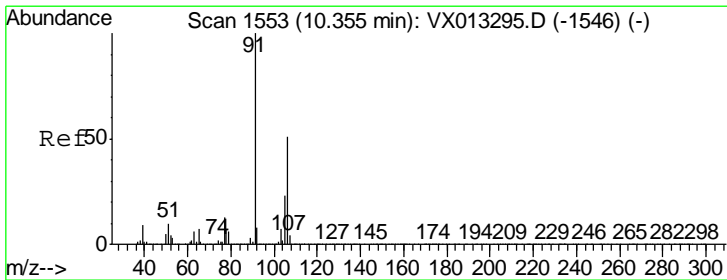
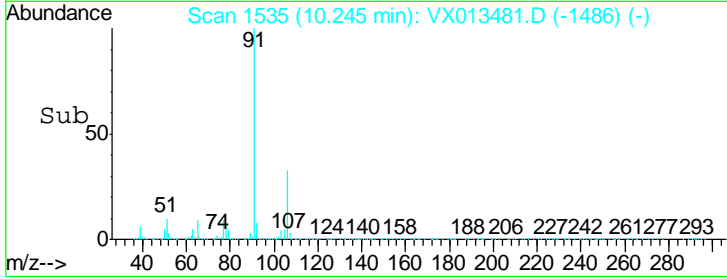
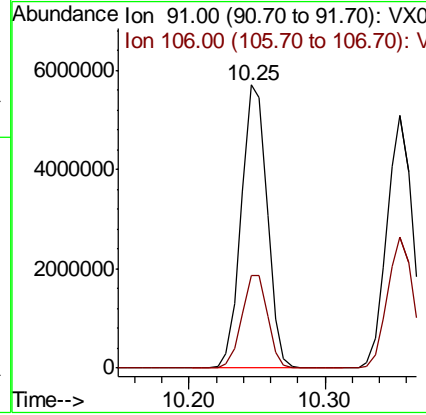
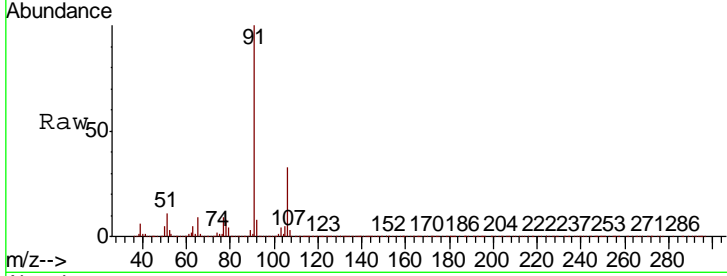
#67
 Ethyl Benzene
 Concen: 204.063 ug/l
 RT: 10.25 min Scan# 1535
 Delta R.T. 0.00 min
 Lab File: VX013481.D
 Acq: 20 Nov 2019 16:45

Instrument : MSVOA_X
 Client Sampled : MW-4

Tgt Ion	Resp	Lower	Upper
91	100		
106	32.8	24.6	36.8

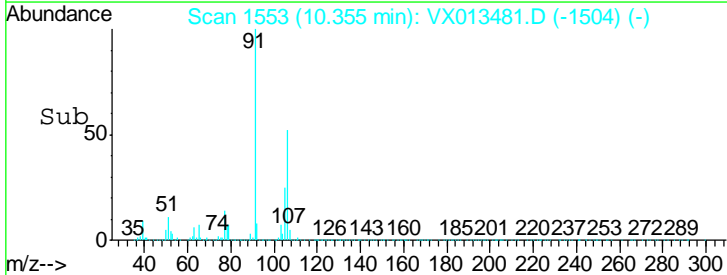
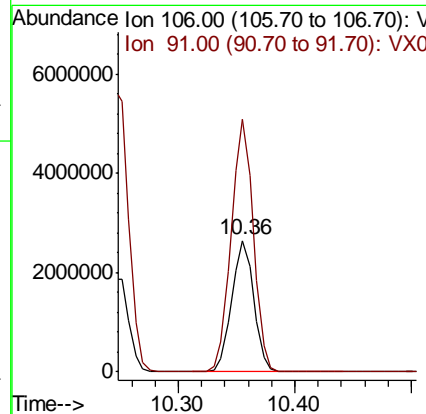
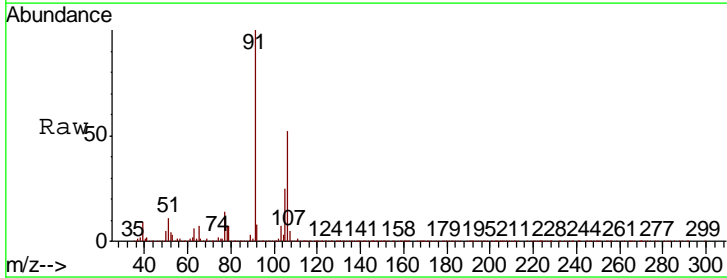
Manual Integrations
 APPROVED

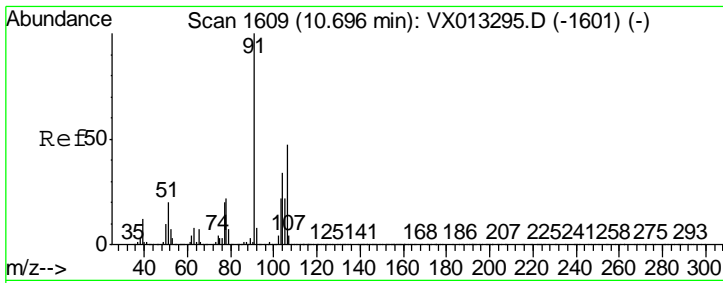
MMDadoda
 11/21/2019 9:54:18 AM



#68
 m/p-Xylenes
 Concen: 247.584 ug/l
 RT: 10.36 min Scan# 1553
 Delta R.T. 0.00 min
 Lab File: VX013481.D
 Acq: 20 Nov 2019 16:45

Tgt Ion	Resp	Lower	Upper
106	100		
91	193.4	159.3	238.9





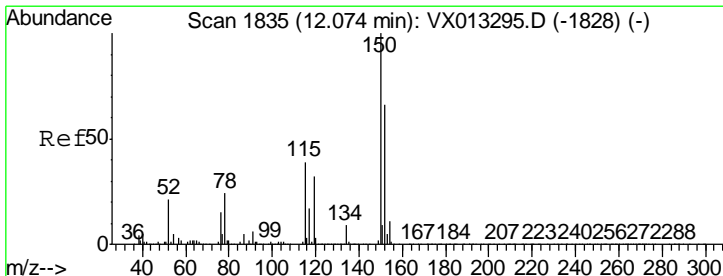
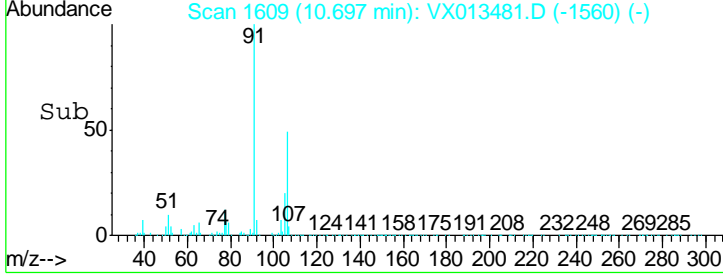
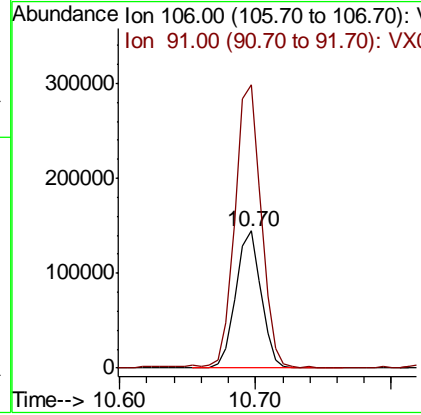
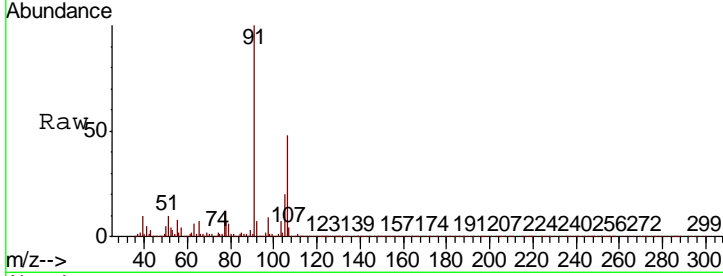
#69
 o-Xylene
 Concen: 13.635 ug/l
 RT: 10.70 min Scan# 1609
 Delta R.T. 0.00 min
 Lab File: VX013481.D
 Acq: 20 Nov 2019 16:45

Instrument : MSVOA_X
 Client Sampled : MW-4

Tgt Ion	Ratio	Lower	Upper
106	100		
91	214.6	105.7	317.0

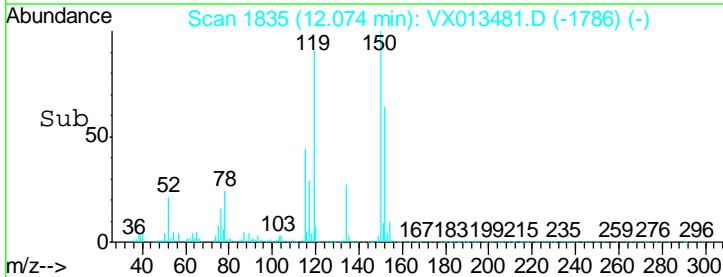
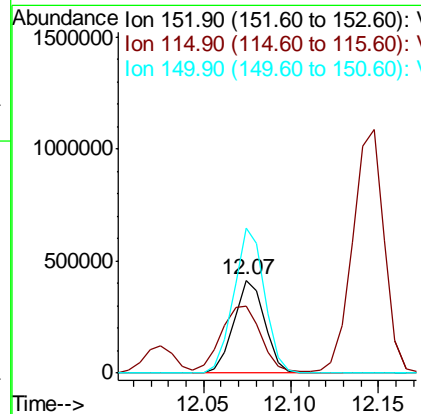
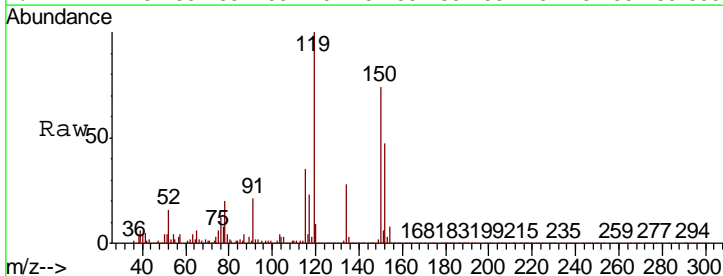
Manual Integrations
 APPROVED

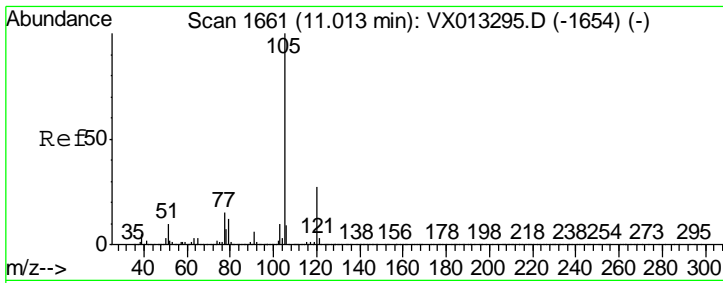
MMDadoda
 11/21/2019 9:54:18 AM



#72
 1,4-Dichlorobenzene-d4
 Concen: 50.000 ug/l
 RT: 12.07 min Scan# 1835
 Delta R.T. 0.00 min
 Lab File: VX013481.D
 Acq: 20 Nov 2019 16:45

Tgt Ion	Ratio	Lower	Upper
152	100		
115	92.1	39.5	118.3
150	156.3	0.0	344.4





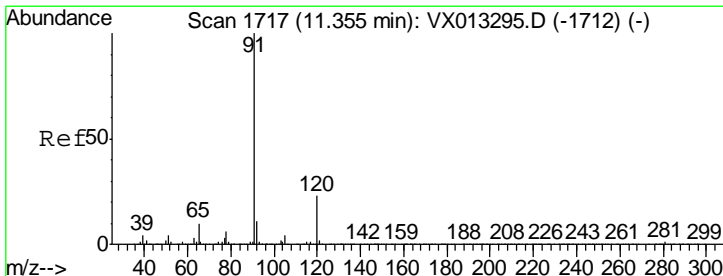
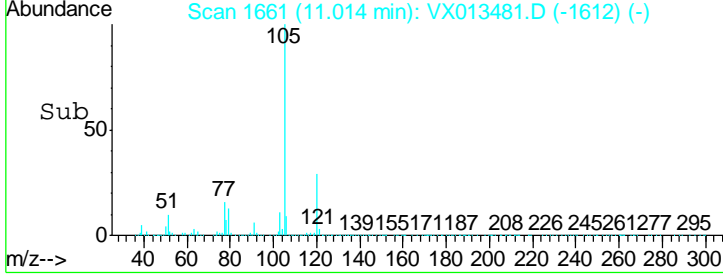
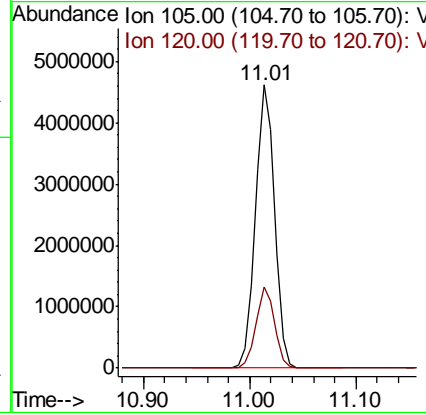
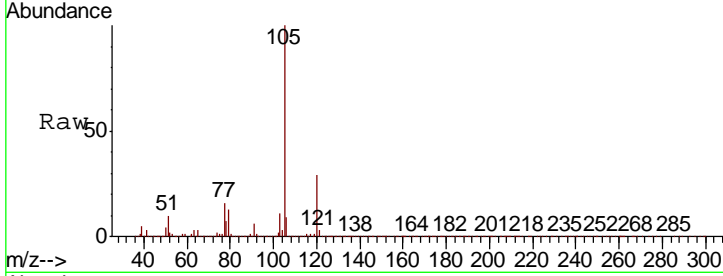
#73
 Isopropylbenzene
 Concen: 172.823 ug/l
 RT: 11.01 min Scan# 1661
 Delta R.T. 0.00 min
 Lab File: VX013481.D
 Acq: 20 Nov 2019 16:45

Instrument : MSVOA_X
 Client Sampled : MW-4

Tgt Ion	Resp	Lower	Upper
105	100		
120	27.9	13.5	40.5

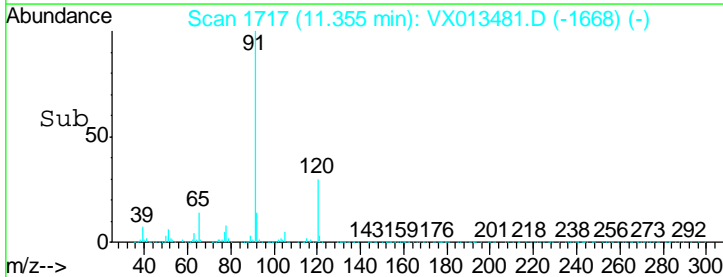
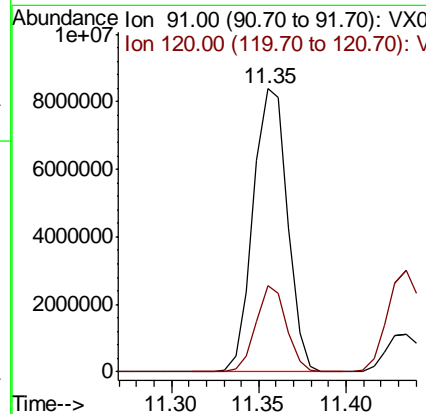
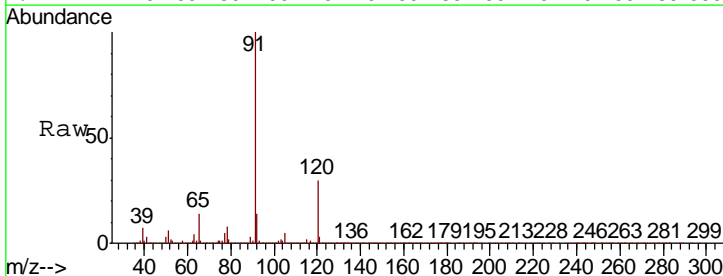
Manual Integrations
 APPROVED

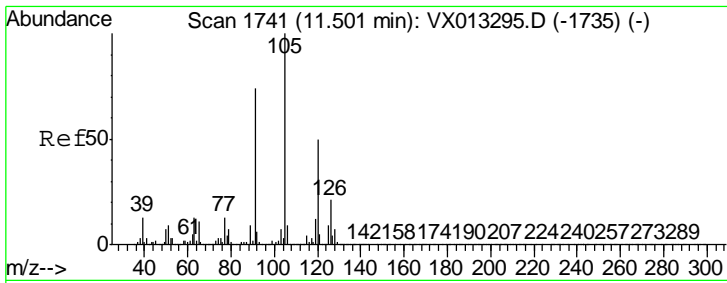
MMDadoda
 11/21/2019 9:54:18 AM



#78
 n-propylbenzene
 Concen: 306.659 ug/l
 RT: 11.35 min Scan# 1717
 Delta R.T. 0.00 min
 Lab File: VX013481.D
 Acq: 20 Nov 2019 16:45

Tgt Ion	Resp	Lower	Upper
91	100		
120	27.0	11.6	34.8



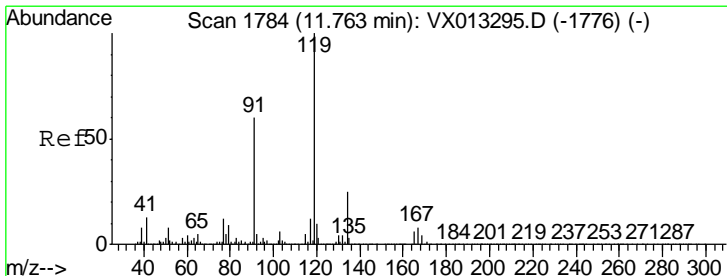
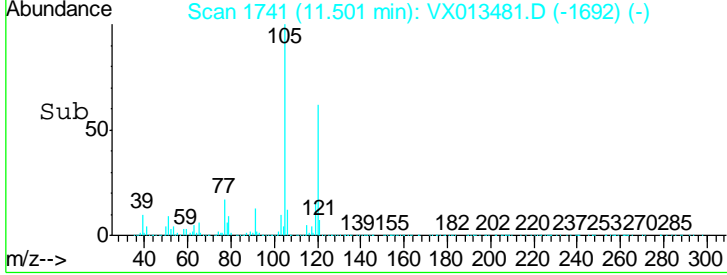
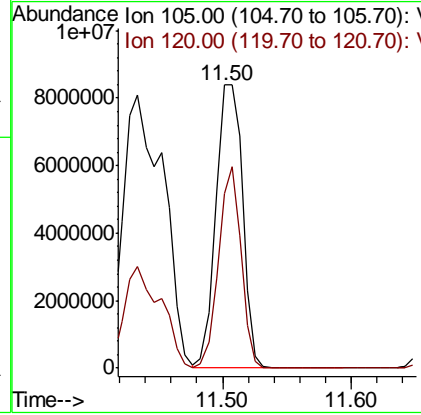
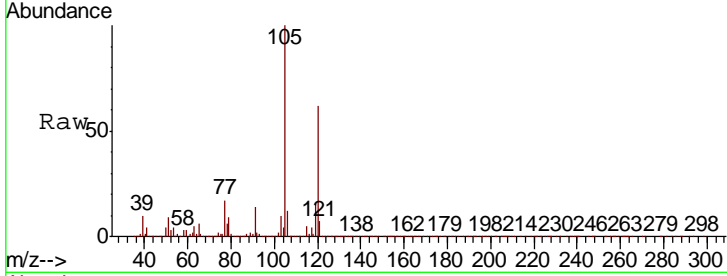


#80
 1,3,5-Trimethylbenzene
 Concen: 438.320 ug/l
 RT: 11.50 min Scan# 1741
 Delta R.T. 0.00 min
 Lab File: VX013481.D
 Acq: 20 Nov 2019 16:45

Instrument : MSVOA_X
 Client Sampled : MW-4

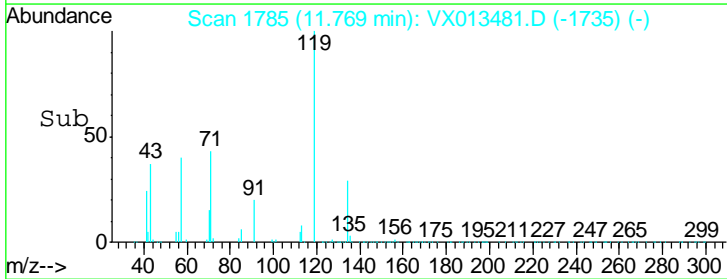
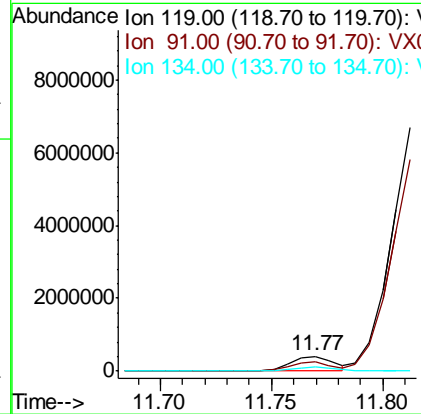
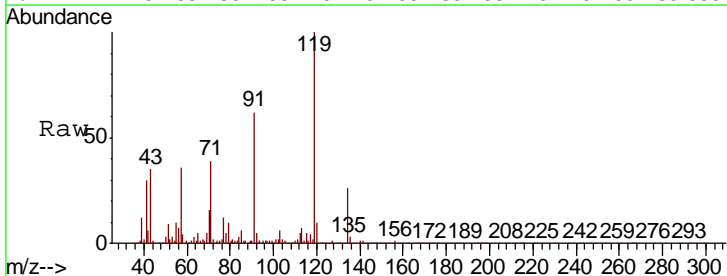
Tgt Ion	Resp	Lower	Upper
105	100		
120	60.0	24.9	74.8

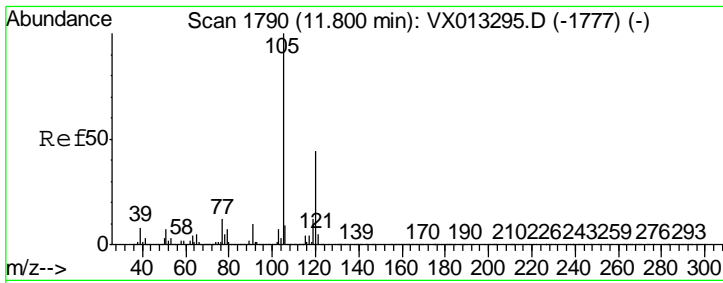
Manual Integrations APPROVED
 MMDadoda
 11/21/2019 9:54:18 AM



#83
 tert-Butylbenzene
 Concen: 18.571 ug/l
 RT: 11.77 min Scan# 1785
 Delta R.T. 0.01 min
 Lab File: VX013481.D
 Acq: 20 Nov 2019 16:45

Tgt Ion	Resp	Lower	Upper
119	100		
91	65.0	26.9	80.7
134	26.0	11.7	35.1





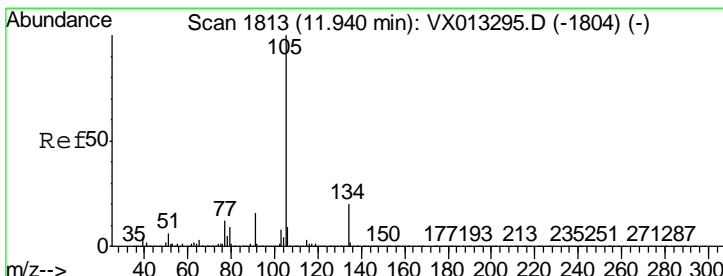
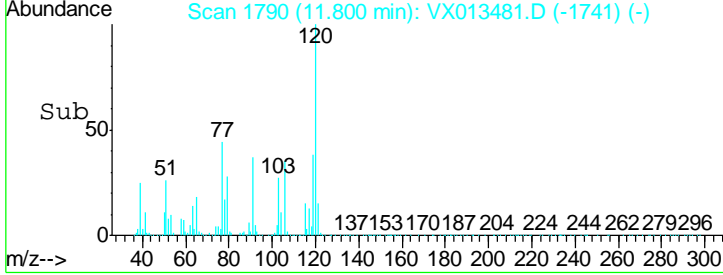
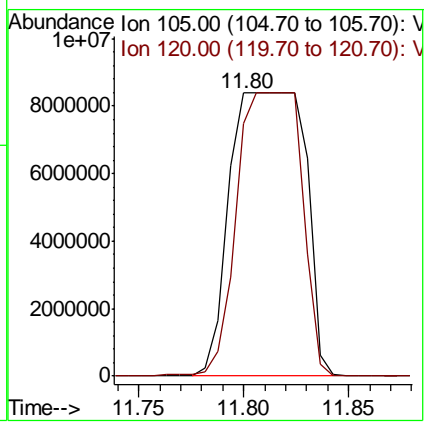
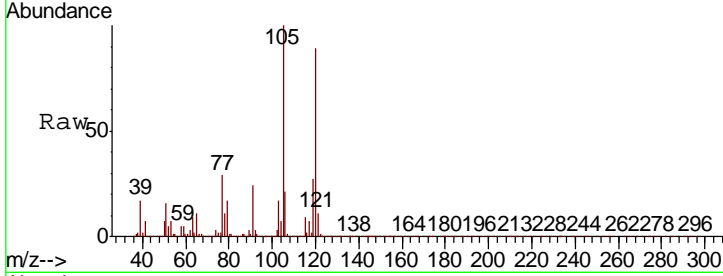
#84
 1,2,4-Trimethylbenzene
 Concen: 745.778 ug/l m
 RT: 11.80 min Scan# 1790
 Delta R.T. 0.00 min
 Lab File: VX013481.D
 Acq: 20 Nov 2019 16:45

Instrument : MSVOA_X
 Client Sampled : MW-4

Tgt Ion: 105 Resp: 20917849

Ion	Ratio	Lower	Upper
105	100		
120	4.6	22.7	68.1#

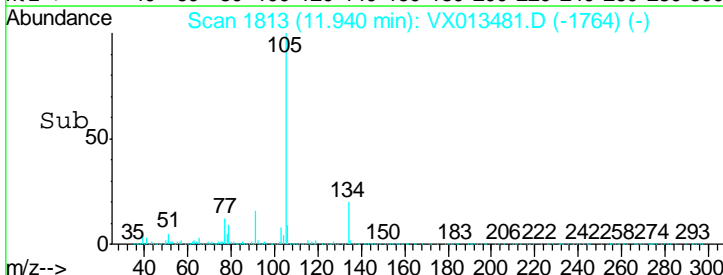
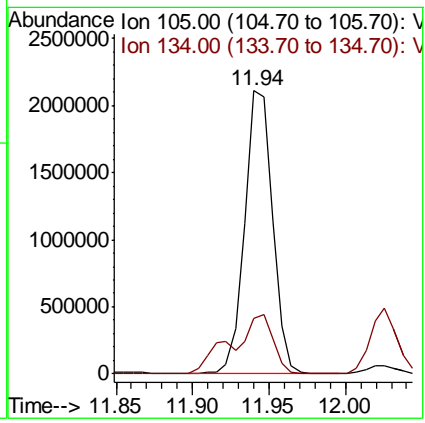
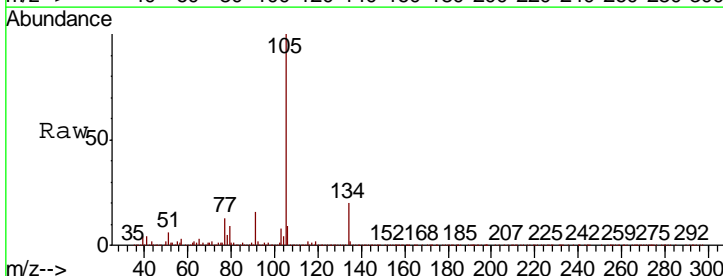
Manual Integrations APPROVED
 MMDadoda
 11/21/2019 9:54:18 AM

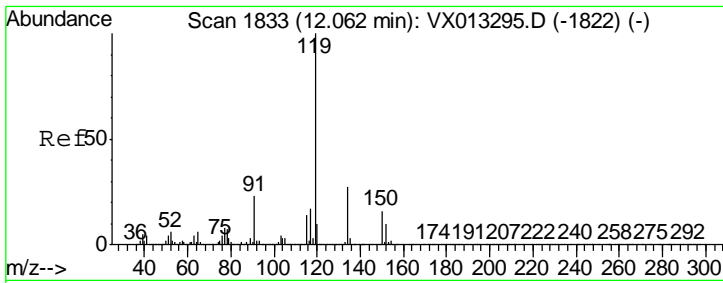


#85
 sec-Butylbenzene
 Concen: 82.285 ug/l
 RT: 11.94 min Scan# 1813
 Delta R.T. 0.00 min
 Lab File: VX013481.D
 Acq: 20 Nov 2019 16:45

Tgt Ion: 105 Resp: 2661772

Ion	Ratio	Lower	Upper
105	100		
134	31.5	10.3	30.9#



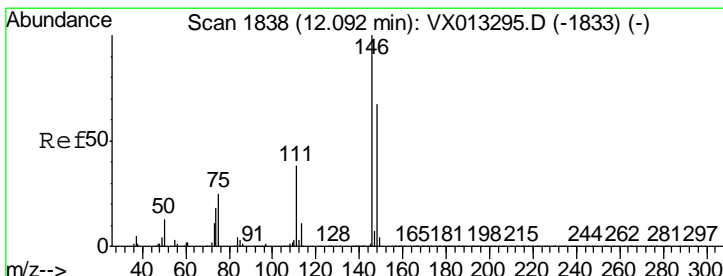
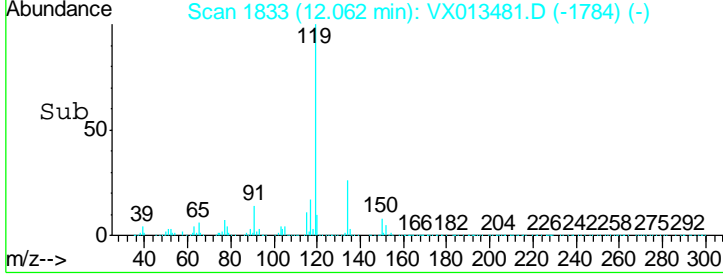
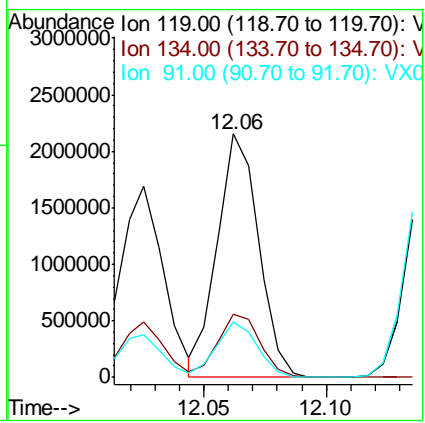
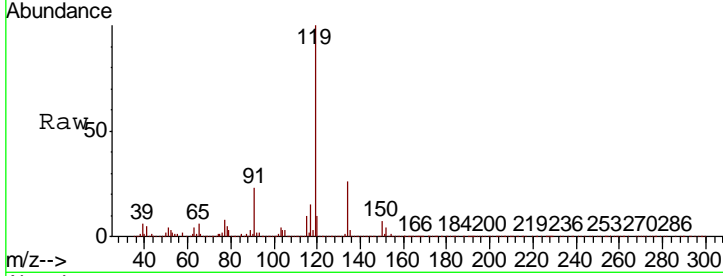


#86
 p-Isopropyltoluene
 Concen: 84.862 ug/l
 RT: 12.06 min Scan# 1833
 Delta R.T. 0.00 min
 Lab File: VX013481.D
 Acq: 20 Nov 2019 16:45

Instrument : MSVOA_X
 ClientSampled : MW-4

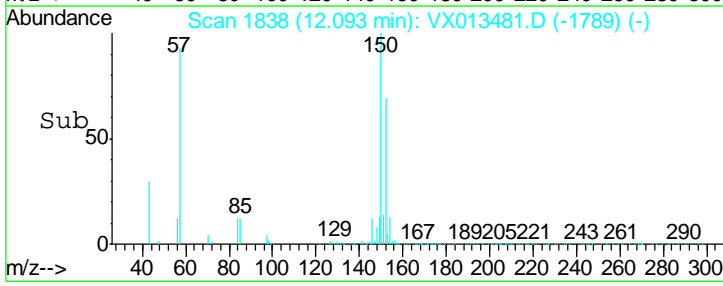
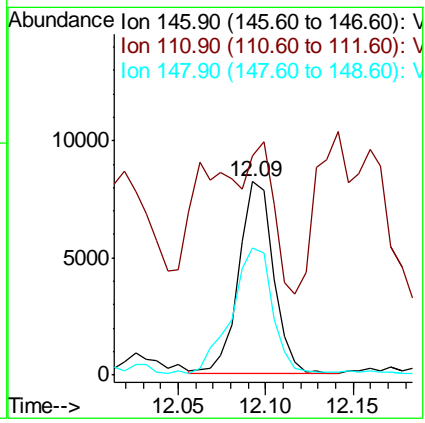
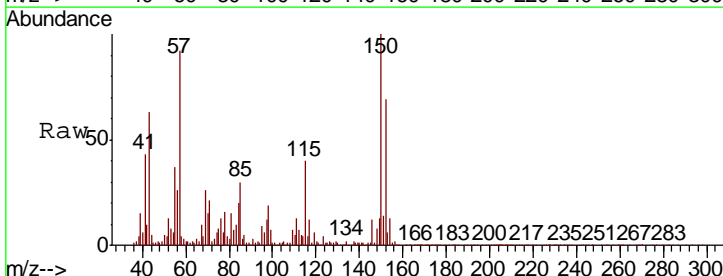
Tgt Ion	Resp	Lower	Upper
119	100		
134	26.8	13.3	39.8
91	22.3	11.5	34.4

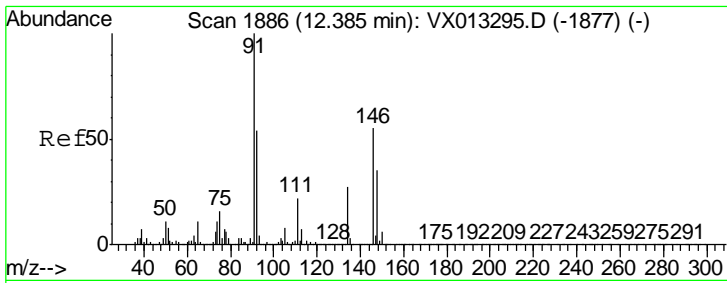
Manual Integrations
APPROVED
 MMDadoda
 11/21/2019 9:54:18 AM



#88
 1,4-Dichlorobenzene
 Concen: 0.705 ug/l
 RT: 12.09 min Scan# 1838
 Delta R.T. 0.00 min
 Lab File: VX013481.D
 Acq: 20 Nov 2019 16:45

Tgt Ion	Resp	Lower	Upper
146	100		
111	0.0	18.8	56.4#
148	76.9	32.4	97.0





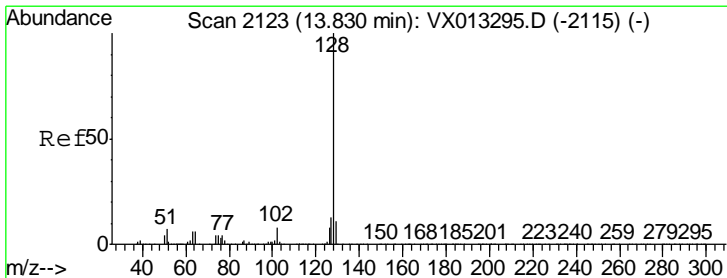
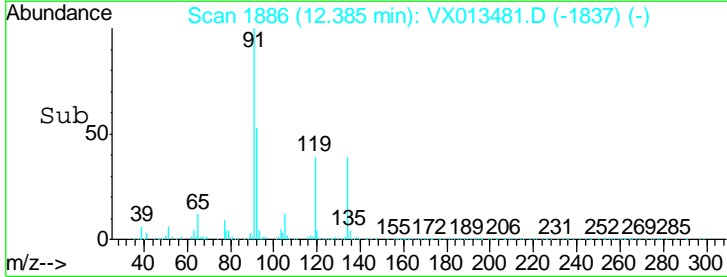
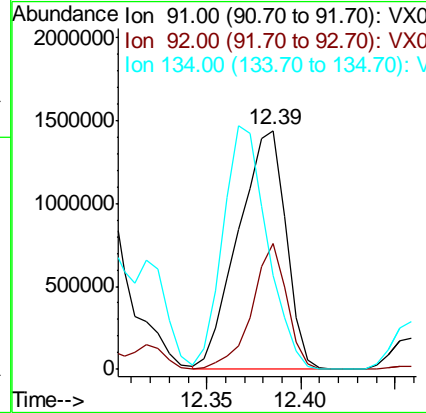
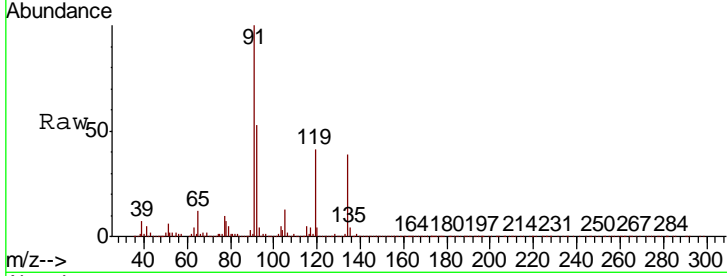
#89
 n-Butylbenzene
 Concen: 97.245 ug/l
 RT: 12.39 min Scan# 1886
 Delta R.T. 0.00 min
 Lab File: VX013481.D
 Acq: 20 Nov 2019 16:45

Instrument : MSVOA_X
 ClientSampled : MW-4

Tgt Ion	Resp	Lower	Upper
91	100		
92	38.4	27.3	81.8
134	94.3	13.5	40.5#

Manual Integrations
 APPROVED

MMDadoda
 11/21/2019 9:54:18 AM



#95
 Naphthalene
 Concen: 131.239 ug/l
 RT: 13.83 min Scan# 2123
 Delta R.T. 0.00 min
 Lab File: VX013481.D
 Acq: 20 Nov 2019 16:45

Tgt Ion	Resp	Lower	Upper
128	100		
127	13.1	10.2	15.2
129	11.3	8.5	12.7

