

Data Path : Z:\voasrv\HPCHEM1\MSVOA\_X\Data\VX112023\  
 Data File : VX038948.D  
 Acq On : 20 Nov 2023 10:57  
 Operator : JC/MD  
 Sample : VX1120WBL01  
 Misc : 5.0mL/MSVOA\_X/WATER  
 ALS Vial : 4 Sample Multiplier: 1

Instrument :  
 MSVOA\_X  
 ClientSampleId :

Quant Time: Nov 21 00:15:43 2023  
 Quant Method : Z:\voasrv\HPCHEM1\MSVOA\_X\Method\82X111623W.M  
 Quant Title : SW846 8260  
 QLast Update : Thu Nov 16 22:59:22 2023  
 Response via : Initial Calibration

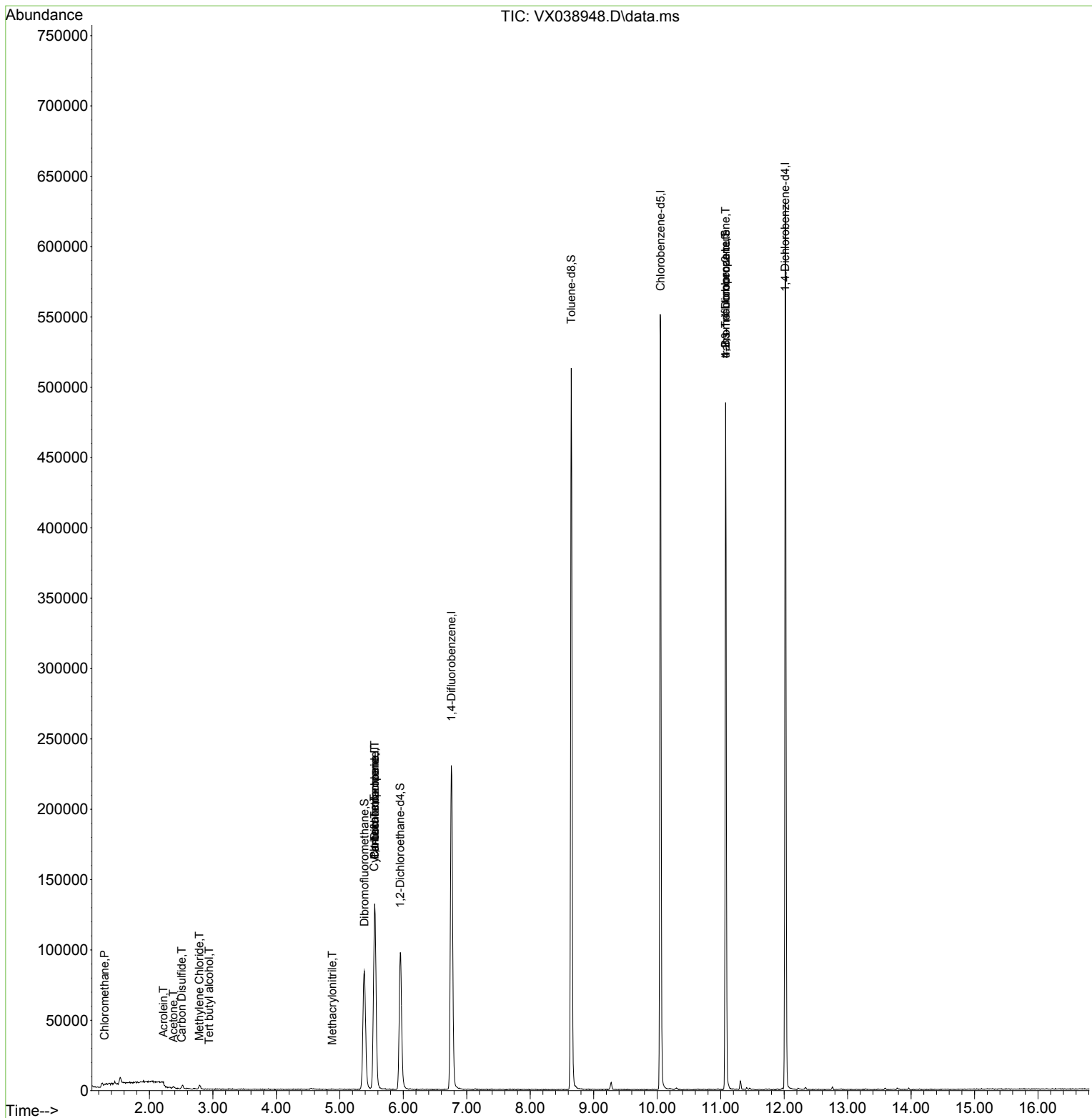
Compound	R.T.	QIon	Response	Conc	Units	Dev(Min)
-----						
Internal Standards						
1) Pentafluorobenzene	5.550	168	116946	50.000	ug/l	0.00
34) 1,4-Difluorobenzene	6.757	114	241718	50.000	ug/l	0.00
63) Chlorobenzene-d5	10.055	117	248133	50.000	ug/l	0.00
72) 1,4-Dichlorobenzene-d4	12.018	152	123277	50.000	ug/l	0.00
System Monitoring Compounds						
33) 1,2-Dichloroethane-d4	5.952	65	91301	48.451	ug/l	0.00
Spiked Amount	50.000	Range 78 - 117	Recovery =	96.900%		
35) Dibromofluoromethane	5.385	113	77063	44.143	ug/l	0.00
Spiked Amount	50.000	Range 75 - 124	Recovery =	88.280%		
50) Toluene-d8	8.647	98	305540	45.744	ug/l	0.00
Spiked Amount	50.000	Range 92 - 112	Recovery =	91.480%#		
62) 4-Bromofluorobenzene	11.079	95	132298	49.480	ug/l	0.00
Spiked Amount	50.000	Range 83 - 123	Recovery =	98.960%		
Target Compounds						
						Qvalue
3) Chloromethane	1.295	50	506	0.284	ug/l #	78
11) Tert butyl alcohol	2.941	59	183	0.349	ug/l #	78
13) Acrolein	2.221	56	426	1.536	ug/l #	74
16) Acetone	2.380	43	1432	1.428	ug/l	98
17) Carbon Disulfide	2.508	76	950	0.210	ug/l #	76
20) Methylene Chloride	2.788	84	1324	0.732	ug/l #	80
31) Cyclohexane	5.544	56	3246	1.206	ug/l #	23
36) 1,1-Dichloropropene	5.550	75	10323	4.126	ug/l #	51
38) Carbon Tetrachloride	5.550	117	13251	5.730	ug/l #	15
41) Methacrylonitrile	4.879	41	498	0.295	ug/l #	27
76) 1,2,3-Trichloropropane	11.079	75	69951	22.743	ug/l #	39
81) trans-1,4-Dichloro-2-b...	11.079	75	69951	50.446	ug/l #	5
-----						

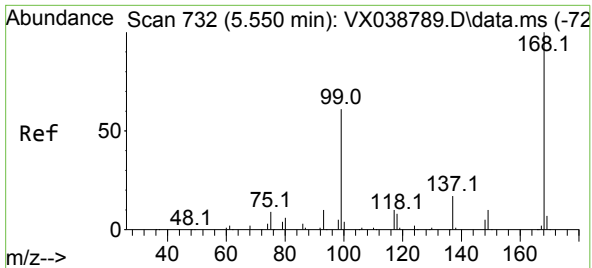
(#) = qualifier out of range (m) = manual integration (+) = signals summed

Data Path : Z:\voasrv\HPCHEM1\MSVOA\_X\Data\VX112023\  
 Data File : VX038948.D  
 Acq On : 20 Nov 2023 10:57  
 Operator : JC/MD  
 Sample : VX1120WBL01  
 Misc : 5.0mL/MSVOA\_X/WATER  
 ALS Vial : 4 Sample Multiplier: 1

Instrument :  
 MSVOA\_X  
 ClientSampleId :

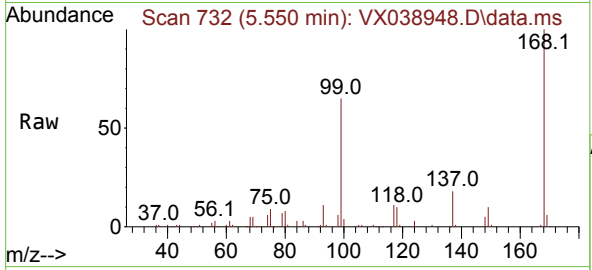
Quant Time: Nov 21 00:15:43 2023  
 Quant Method : Z:\voasrv\HPCHEM1\MSVOA\_X\Method\82X111623W.M  
 Quant Title : SW846 8260  
 QLast Update : Thu Nov 16 22:59:22 2023  
 Response via : Initial Calibration



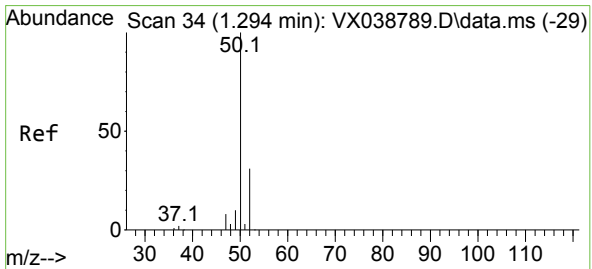
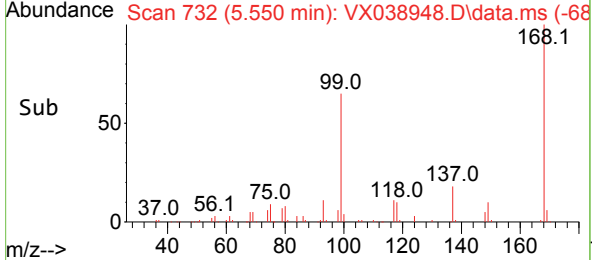
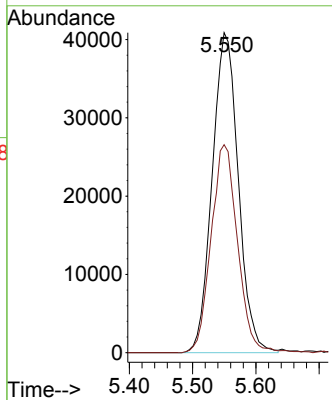


#1  
 Pentafluorobenzene  
 Concen: 50.000 ug/l  
 RT: 5.550 min Scan# 71  
 Delta R.T. -0.000 min  
 Lab File: VX038948.D  
 Acq: 20 Nov 2023 10:57

Instrument : MSVOA\_X  
 ClientSampleId :

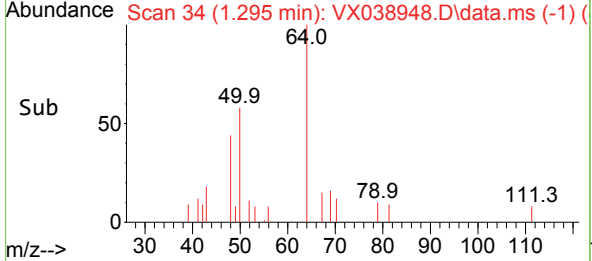
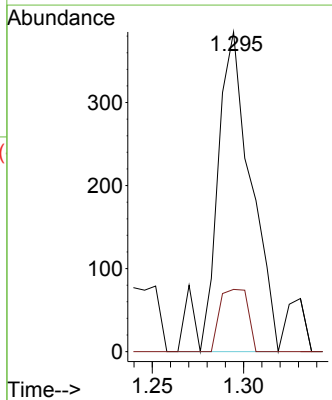
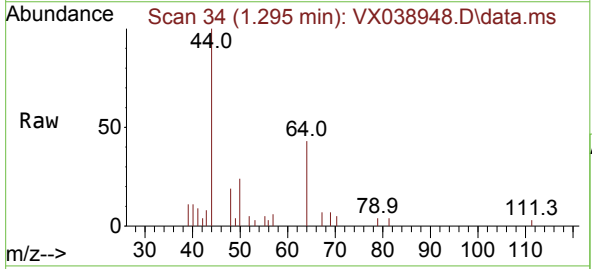


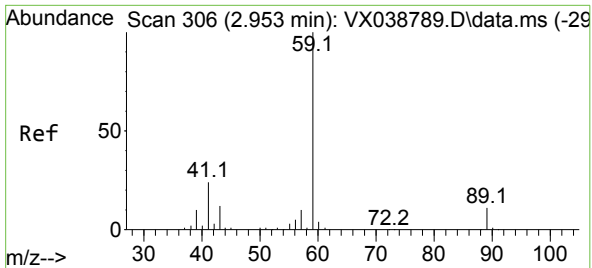
Tgt Ion:168 Resp: 116946  
 Ion Ratio Lower Upper  
 168 100  
 99 65.0 56.6 85.0



#3  
 Chloromethane  
 Concen: 0.284 ug/l  
 RT: 1.295 min Scan# 34  
 Delta R.T. 0.001 min  
 Lab File: VX038948.D  
 Acq: 20 Nov 2023 10:57

Tgt Ion: 50 Resp: 506  
 Ion Ratio Lower Upper  
 50 100  
 52 19.5 25.5 38.3#

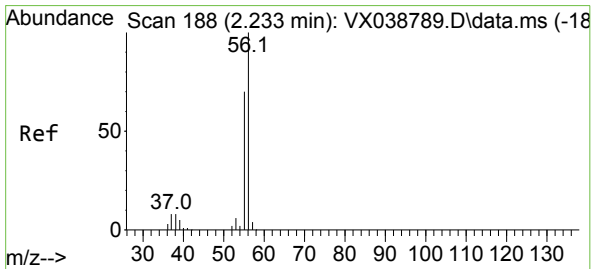
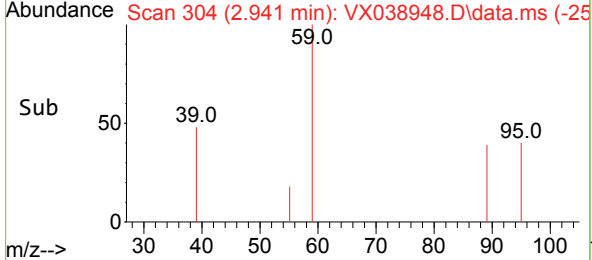
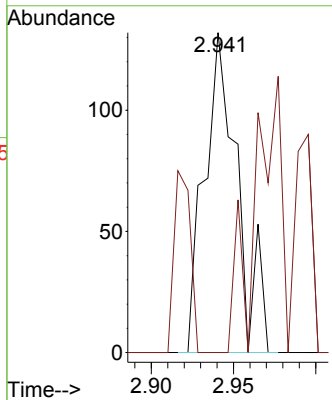
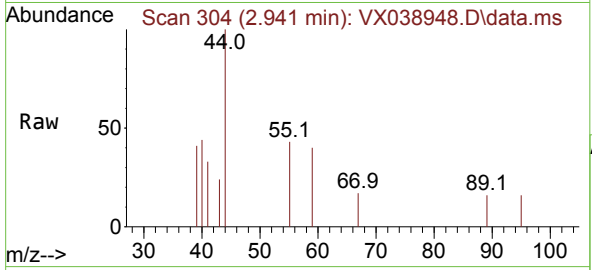




#11  
 Tert butyl alcohol  
 Concen: 0.349 ug/l  
 RT: 2.941 min Scan# 30  
 Delta R.T. -0.012 min  
 Lab File: VX038948.D  
 Acq: 20 Nov 2023 10:57

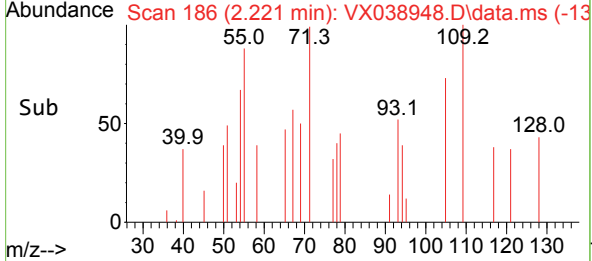
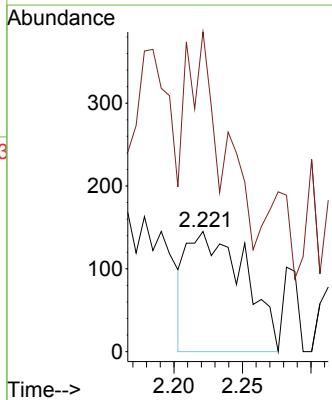
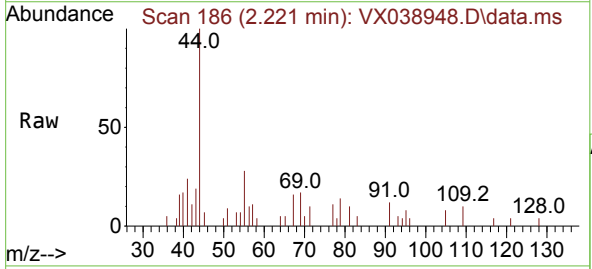
Instrument : MSVOA\_X  
 ClientSampleId :

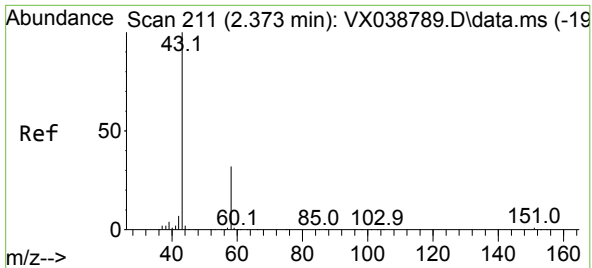
Tgt Ion: 59 Resp: 183  
 Ion Ratio Lower Upper  
 59 100  
 57 0.0 6.0 9.0#



#13  
 Acrolein  
 Concen: 1.536 ug/l  
 RT: 2.221 min Scan# 186  
 Delta R.T. -0.012 min  
 Lab File: VX038948.D  
 Acq: 20 Nov 2023 10:57

Tgt Ion: 56 Resp: 426  
 Ion Ratio Lower Upper  
 56 100  
 55 50.0 57.1 85.7#

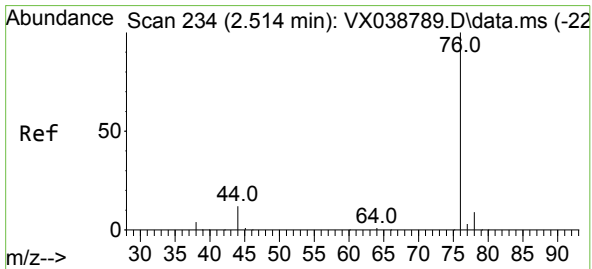
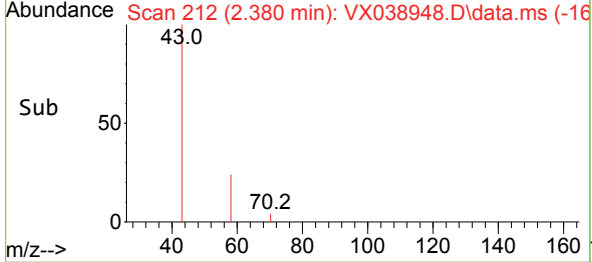
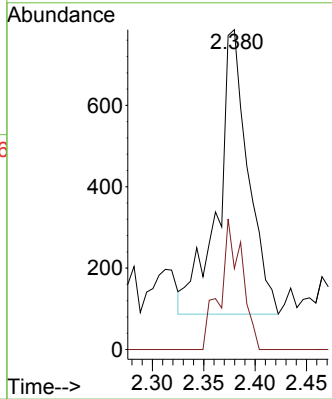
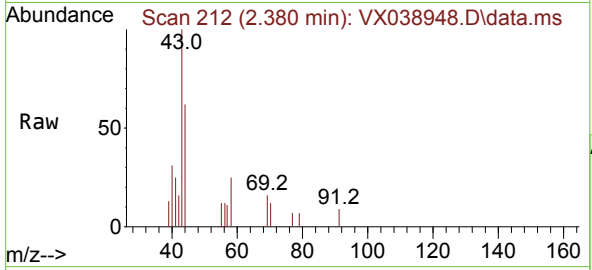




#16  
 Acetone  
 Concen: 1.428 ug/l  
 RT: 2.380 min Scan# 211  
 Delta R.T. 0.006 min  
 Lab File: VX038948.D  
 Acq: 20 Nov 2023 10:57

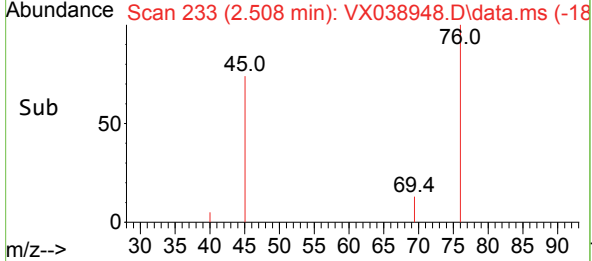
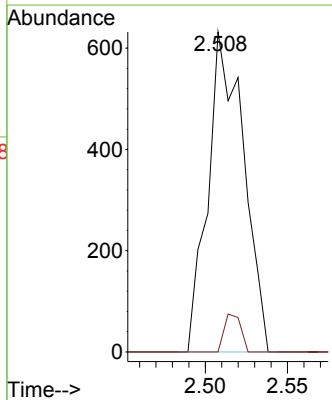
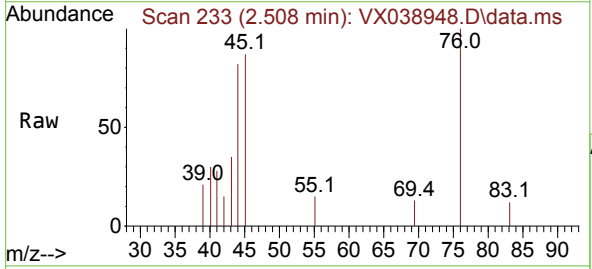
Instrument : MSVOA\_X  
 ClientSampleId :

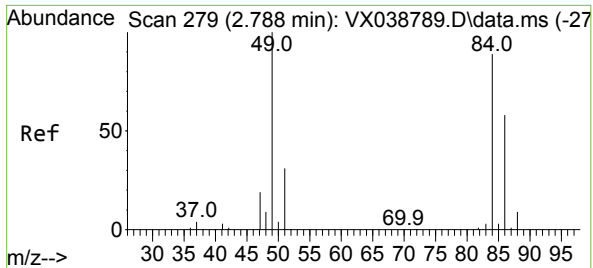
Tgt Ion	Resp	Lower	Upper
43	1432		
58	28.5	21.9	32.9



#17  
 Carbon Disulfide  
 Concen: 0.210 ug/l  
 RT: 2.508 min Scan# 233  
 Delta R.T. -0.006 min  
 Lab File: VX038948.D  
 Acq: 20 Nov 2023 10:57

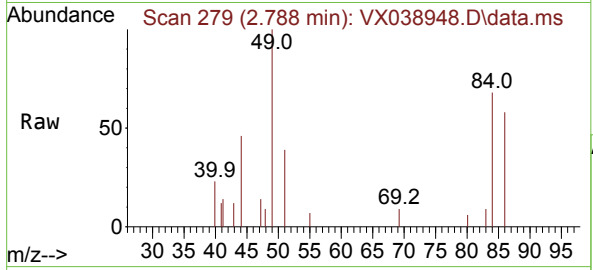
Tgt Ion	Resp	Lower	Upper
76	950		
78	0.0	7.0	10.6#





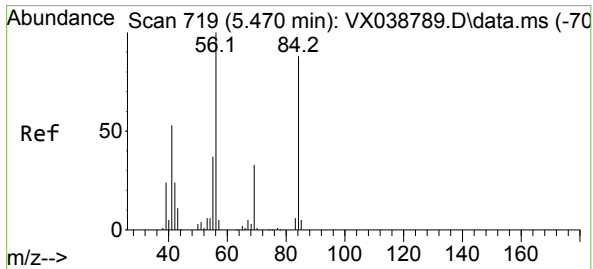
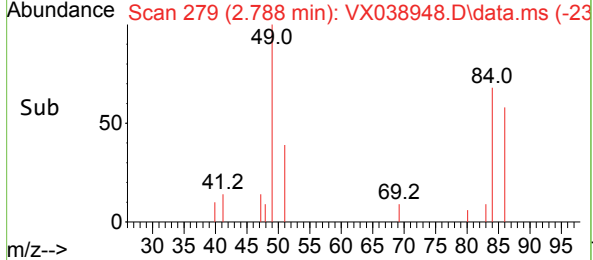
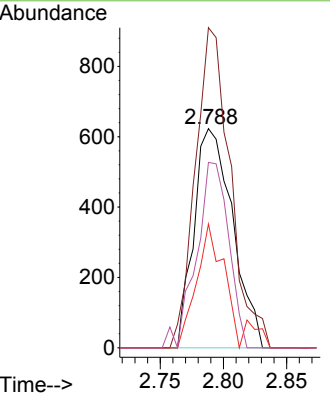
#20  
 Methylene Chloride  
 Concen: 0.732 ug/l  
 RT: 2.788 min Scan# 21  
 Delta R.T. 0.000 min  
 Lab File: VX038948.D  
 Acq: 20 Nov 2023 10:57

Instrument : MSVOA\_X  
 ClientSampleId :

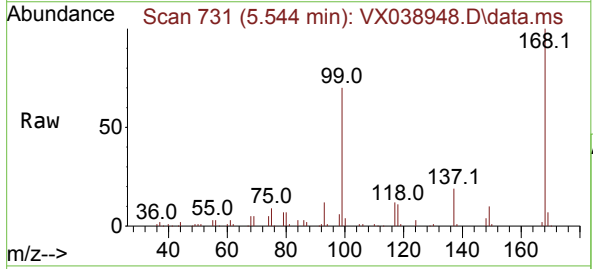


Tgt Ion: 84 Resp: 1324

Ion	Ratio	Lower	Upper
84	100		
49	146.1	103.6	155.4
51	56.5	33.8	50.6#
86	84.6	49.4	74.0#

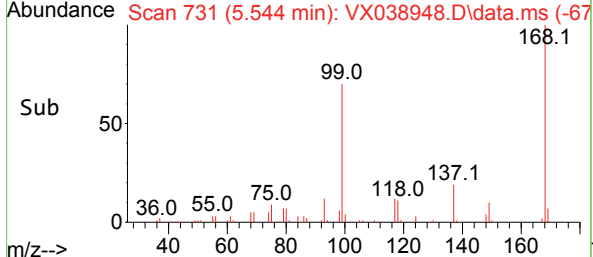
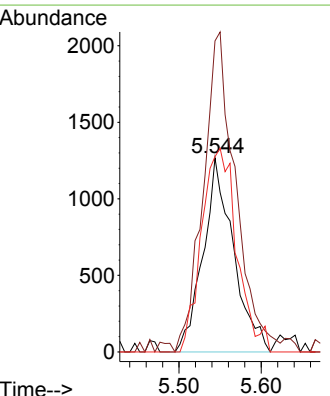


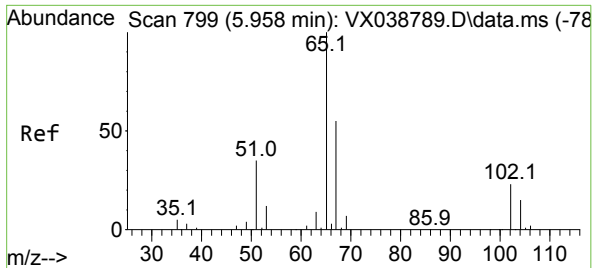
#31  
 Cyclohexane  
 Concen: 1.206 ug/l  
 RT: 5.544 min Scan# 731  
 Delta R.T. 0.073 min  
 Lab File: VX038948.D  
 Acq: 20 Nov 2023 10:57



Tgt Ion: 56 Resp: 3246

Ion	Ratio	Lower	Upper
56	100		
69	155.8	23.4	35.2#
84	100.6	65.9	98.9#

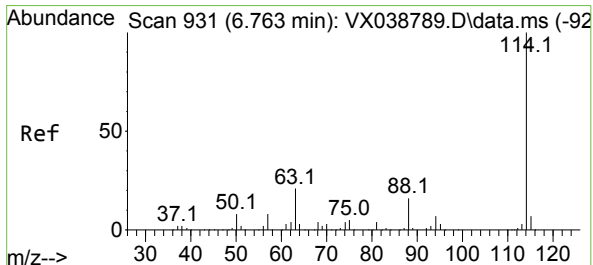
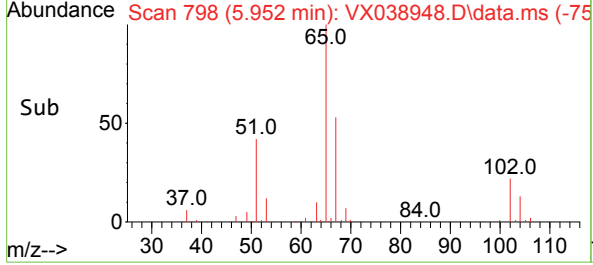
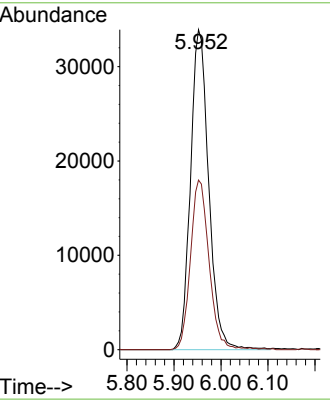
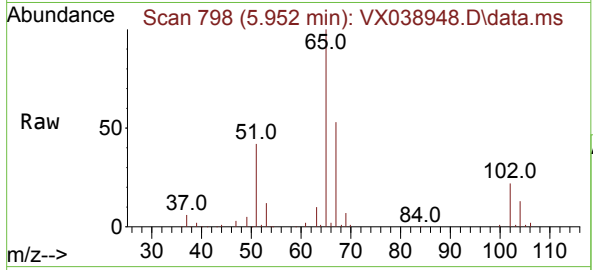




#33  
 1,2-Dichloroethane-d4  
 Concen: 48.451 ug/l  
 RT: 5.952 min Scan# 799  
 Delta R.T. -0.006 min  
 Lab File: VX038948.D  
 Acq: 20 Nov 2023 10:57

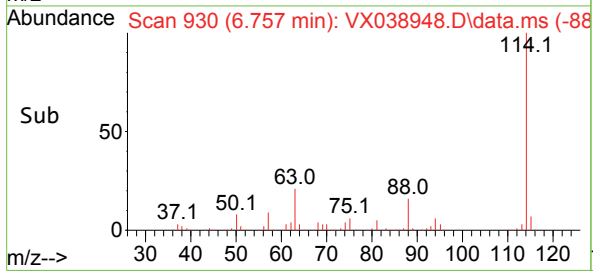
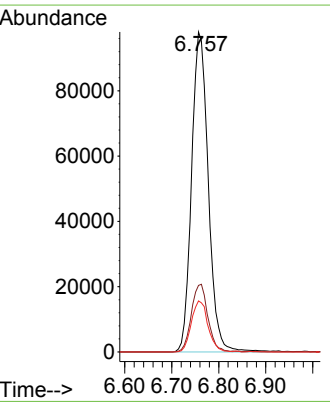
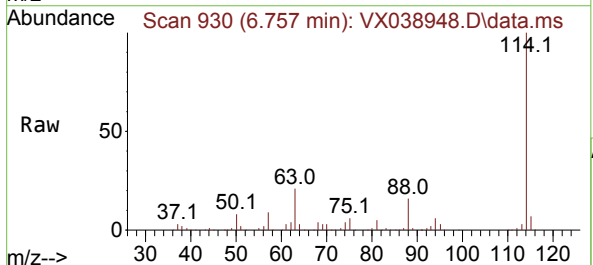
Instrument : MSVOA\_X  
 ClientSampleId :

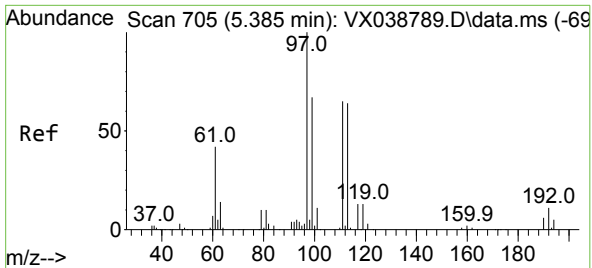
Tgt Ion: 65 Resp: 91301  
 Ion Ratio Lower Upper  
 65 100  
 67 54.3 0.0 100.2



#34  
 1,4-Difluorobenzene  
 Concen: 50.000 ug/l  
 RT: 6.757 min Scan# 930  
 Delta R.T. -0.006 min  
 Lab File: VX038948.D  
 Acq: 20 Nov 2023 10:57

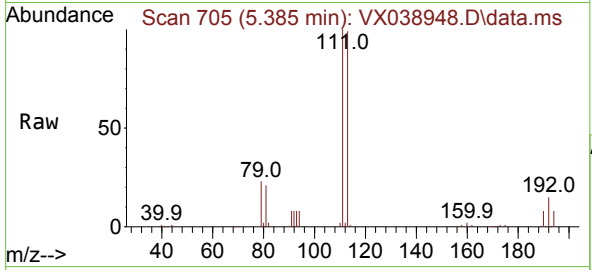
Tgt Ion: 114 Resp: 241718  
 Ion Ratio Lower Upper  
 114 100  
 63 20.8 0.0 45.0  
 88 15.9 0.0 36.6



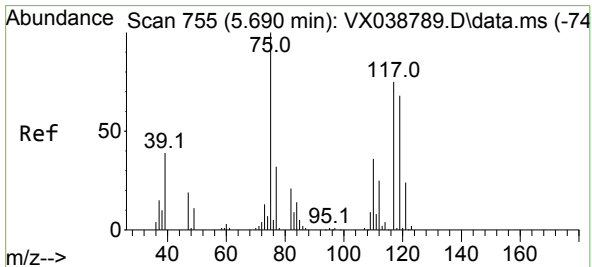
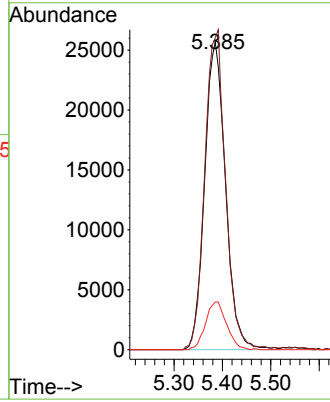
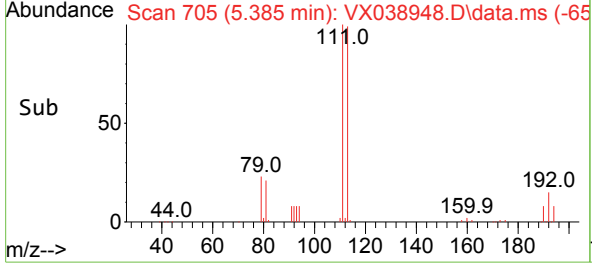


#35  
 Dibromofluoromethane  
 Concen: 44.143 ug/l  
 RT: 5.385 min Scan# 705  
 Delta R.T. 0.000 min  
 Lab File: VX038948.D  
 Acq: 20 Nov 2023 10:57

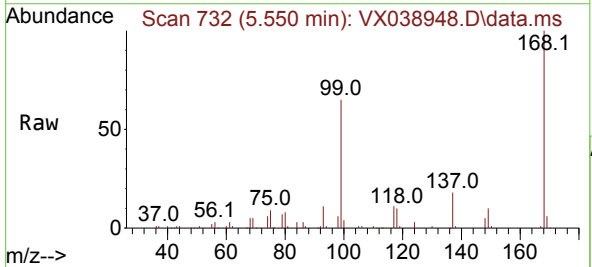
Instrument : MSVOA\_X  
 ClientSampleId :



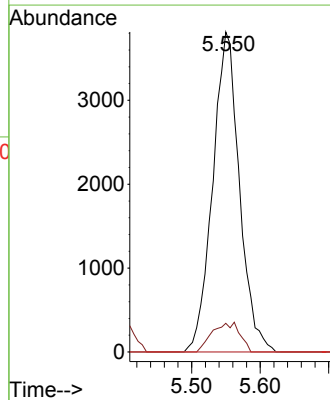
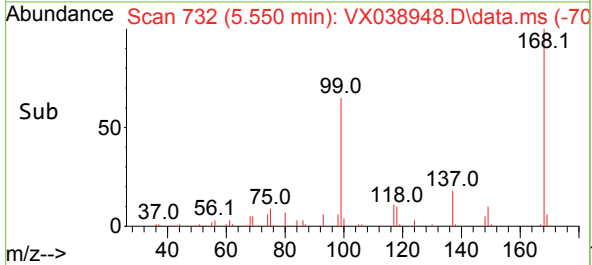
Tgt Ion:113 Resp: 77063  
 Ion Ratio Lower Upper  
 113 100  
 111 103.2 82.9 124.3  
 192 15.6 13.3 19.9



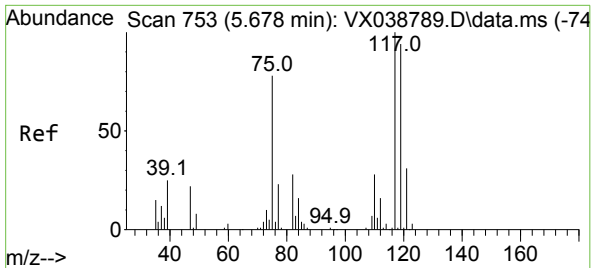
#36  
 1,1-Dichloropropene  
 Concen: 4.126 ug/l  
 RT: 5.550 min Scan# 732  
 Delta R.T. -0.140 min  
 Lab File: VX038948.D  
 Acq: 20 Nov 2023 10:57



Tgt Ion: 75 Resp: 10323  
 Ion Ratio Lower Upper  
 75 100  
 110 9.5 17.0 50.9#  
 77 0.0 24.7 37.1#

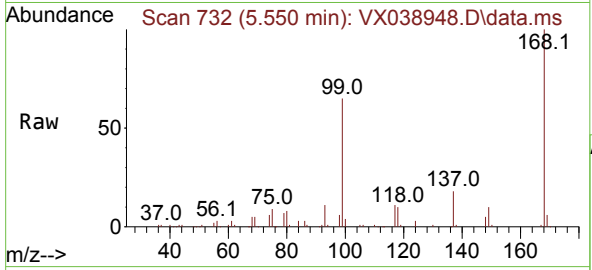




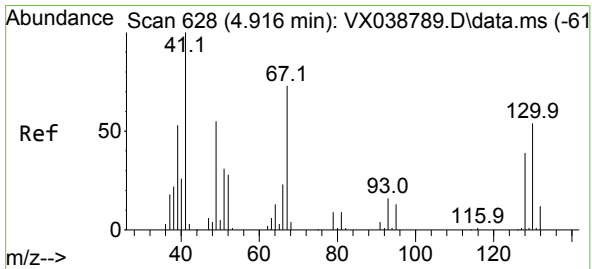
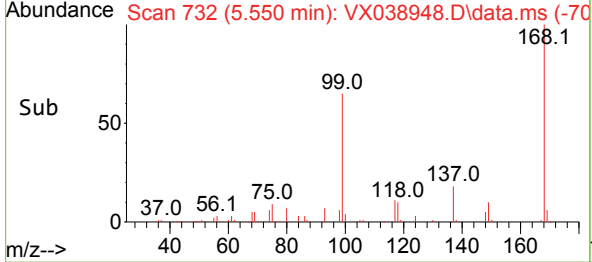
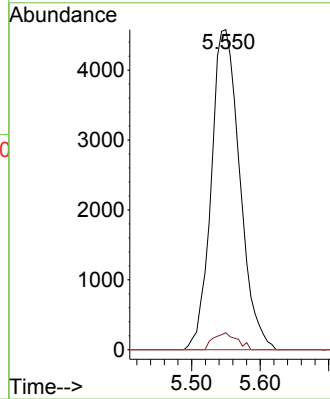


#38  
 Carbon Tetrachloride  
 Concen: 5.730 ug/l  
 RT: 5.550 min Scan# 711  
 Delta R.T. -0.128 min  
 Lab File: VX038948.D  
 Acq: 20 Nov 2023 10:57

Instrument :  
 MSVOA\_X  
 ClientSampleId :

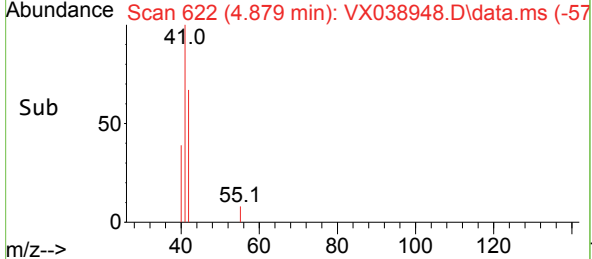
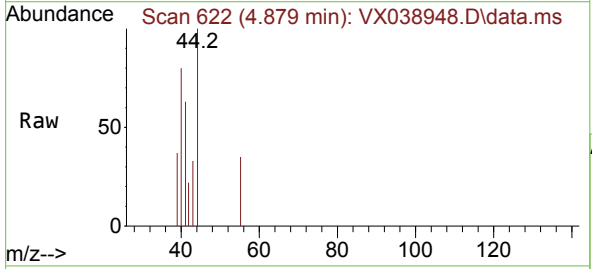
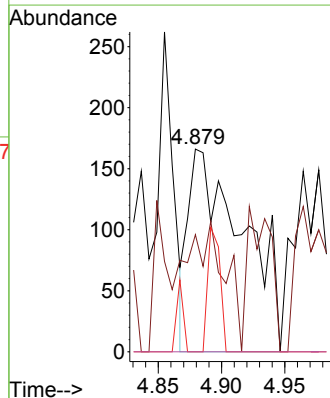


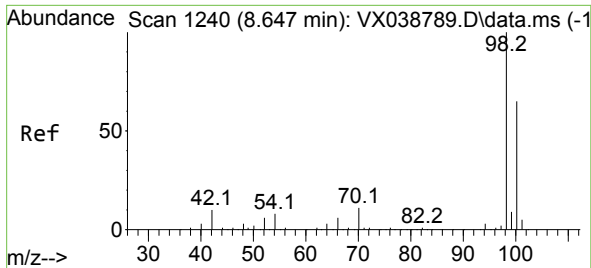
Tgt Ion:117 Resp: 13251  
 Ion Ratio Lower Upper  
 117 100  
 119 5.3 78.2 117.2#  
 121 0.0 24.4 36.6#



#41  
 Methacrylonitrile  
 Concen: 0.295 ug/l  
 RT: 4.879 min Scan# 622  
 Delta R.T. -0.036 min  
 Lab File: VX038948.D  
 Acq: 20 Nov 2023 10:57

Tgt Ion: 41 Resp: 498  
 Ion Ratio Lower Upper  
 41 100  
 39 0.0 45.2 67.8#  
 67 4.4 52.6 78.8#  
 52 0.0 22.7 34.1#

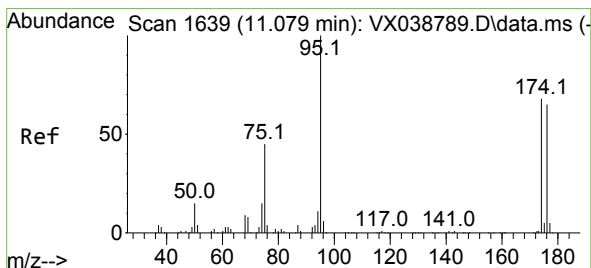
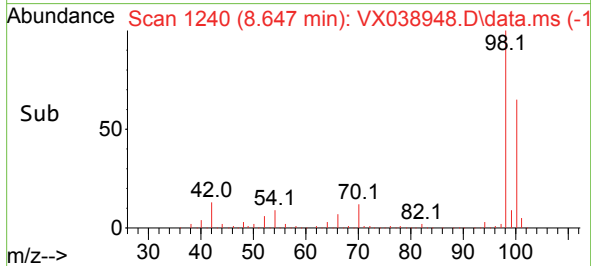
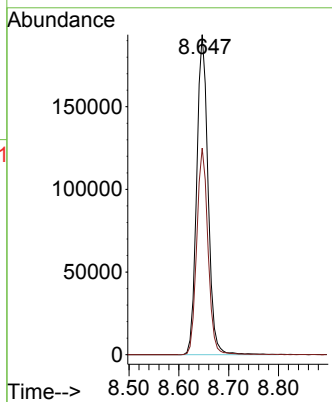
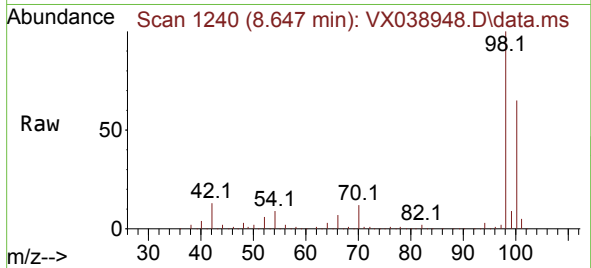




#50  
 Toluene-d8  
 Concen: 45.744 ug/l  
 RT: 8.647 min Scan# 11  
 Delta R.T. 0.000 min  
 Lab File: VX038948.D  
 Acq: 20 Nov 2023 10:57

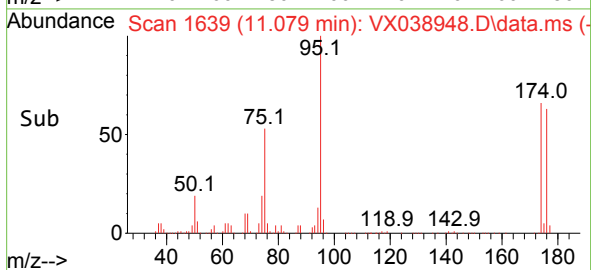
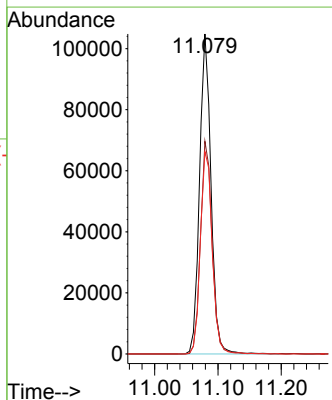
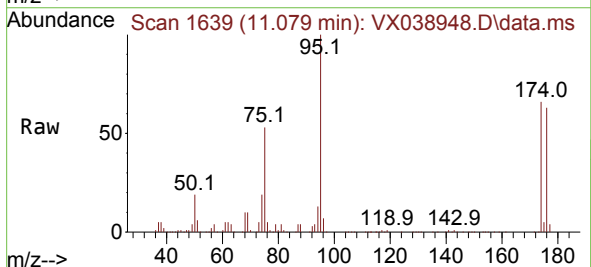
Instrument :  
 MSVOA\_X  
 ClientSampleId :

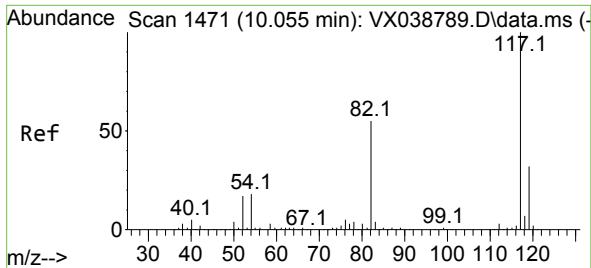
Tgt Ion: 98 Resp: 305540  
 Ion Ratio Lower Upper  
 98 100  
 100 64.0 53.1 79.7



#62  
 4-Bromofluorobenzene  
 Concen: 49.480 ug/l  
 RT: 11.079 min Scan# 1639  
 Delta R.T. 0.000 min  
 Lab File: VX038948.D  
 Acq: 20 Nov 2023 10:57

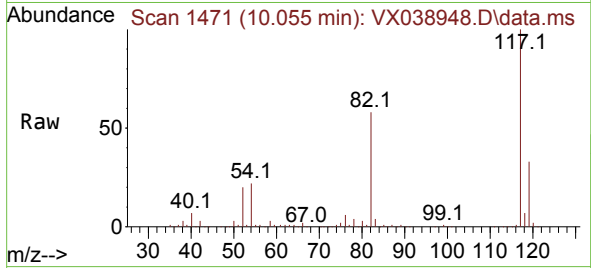
Tgt Ion: 95 Resp: 132298  
 Ion Ratio Lower Upper  
 95 100  
 174 67.5 0.0 135.6  
 176 65.5 0.0 131.0



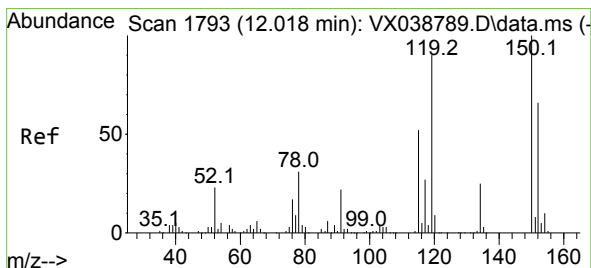
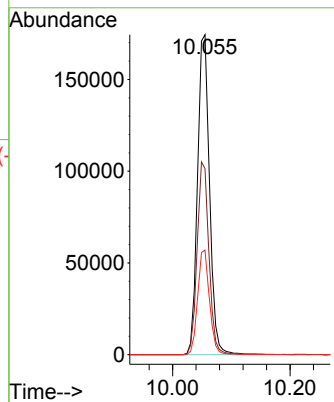
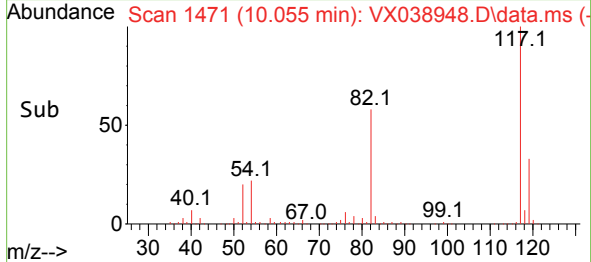


#63  
 Chlorobenzene-d5  
 Concen: 50.000 ug/l  
 RT: 10.055 min Scan# 1471  
 Delta R.T. 0.000 min  
 Lab File: VX038948.D  
 Acq: 20 Nov 2023 10:57

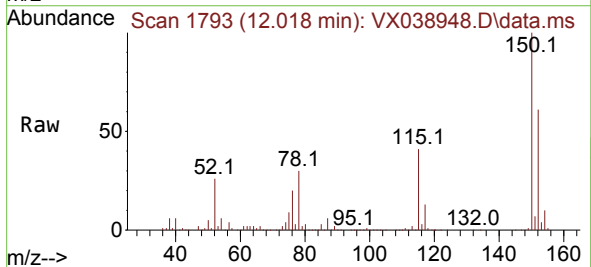
Instrument :  
 MSVOA\_X  
 ClientSampleId :



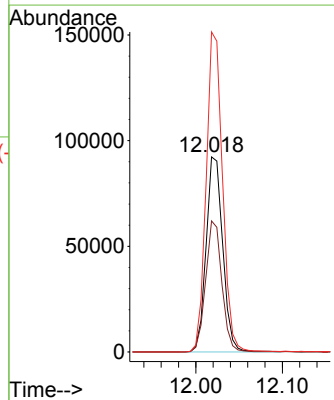
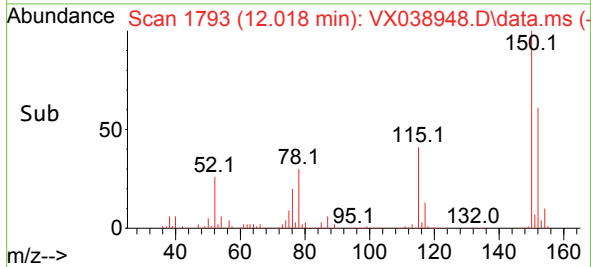
Tgt Ion:117 Resp: 248133  
 Ion Ratio Lower Upper  
 117 100  
 82 58.1 46.2 69.4  
 119 32.7 25.5 38.3

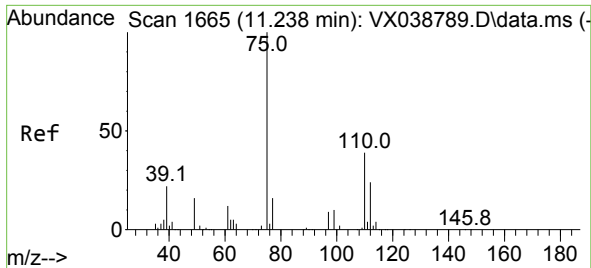


#72  
 1,4-Dichlorobenzene-d4  
 Concen: 50.000 ug/l  
 RT: 12.018 min Scan# 1793  
 Delta R.T. 0.000 min  
 Lab File: VX038948.D  
 Acq: 20 Nov 2023 10:57



Tgt Ion:152 Resp: 123277  
 Ion Ratio Lower Upper  
 152 100  
 115 65.6 43.3 129.9  
 150 161.3 0.0 345.0

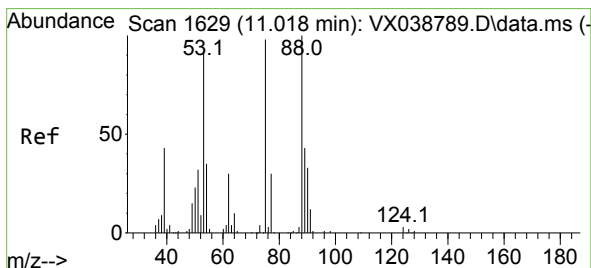
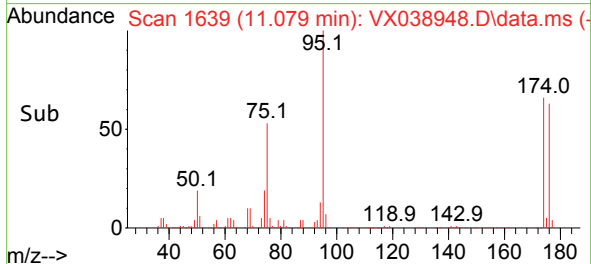
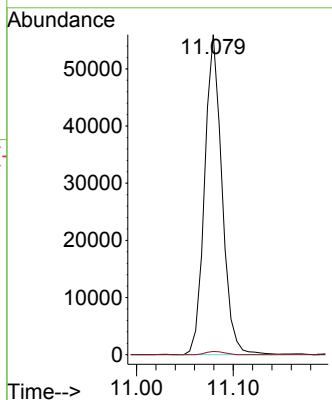
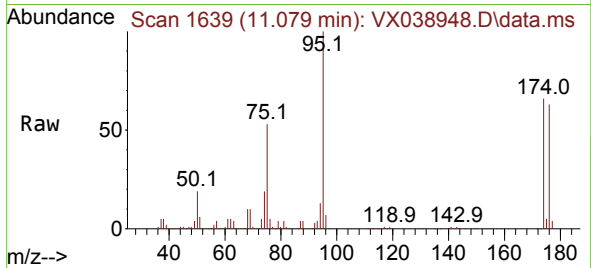




#76  
 1,2,3-Trichloropropane  
 Concen: 22.743 ug/l  
 RT: 11.079 min Scan# 1639  
 Delta R.T. -0.158 min  
 Lab File: VX038948.D  
 Acq: 20 Nov 2023 10:57

Instrument : MSVOA\_X  
 ClientSampleId :

Tgt Ion: 75 Resp: 69951  
 Ion Ratio Lower Upper  
 75 100  
 77 1.1 19.1 57.5#



#81  
 trans-1,4-Dichloro-2-butene  
 Concen: 50.446 ug/l  
 RT: 11.079 min Scan# 1639  
 Delta R.T. 0.061 min  
 Lab File: VX038948.D  
 Acq: 20 Nov 2023 10:57

Tgt Ion: 75 Resp: 69951  
 Ion Ratio Lower Upper  
 75 100  
 53 0.0 90.5 135.7#  
 89 0.1 36.9 55.3#

