

Data Path : Z:\voasrv\HPCHEM1\MSVOA_X\Data\VX112023\
 Data File : VX038951.D
 Acq On : 20 Nov 2023 12:24
 Operator : JC/MD
 Sample : 05428-01 10X
 Misc : 5.0mL/MSVOA_X/WATER
 ALS Vial : 7 Sample Multiplier: 1

Instrument :
 MSVOA_X
 ClientSampleId :
 RE120D2-20231113

Quant Time: Nov 21 00:18:01 2023
 Quant Method : Z:\voasrv\HPCHEM1\MSVOA_X\Method\82X111623W.M
 Quant Title : SW846 8260
 QLast Update : Thu Nov 16 22:59:22 2023
 Response via : Initial Calibration

Compound	R.T.	QIon	Response	Conc	Units	Dev(Min)

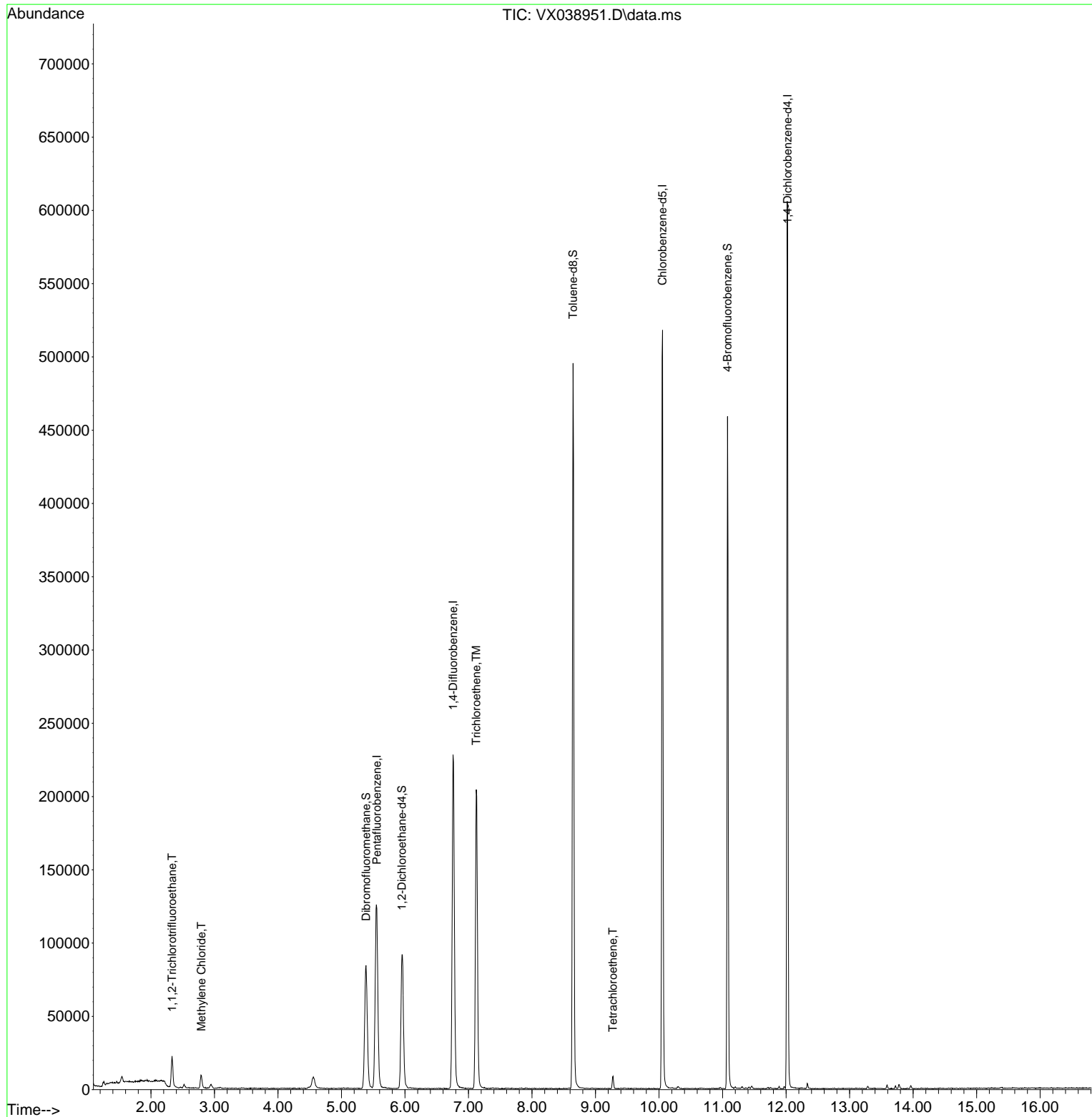
Internal Standards						
1) Pentafluorobenzene	5.556	168	116181	50.000	ug/l	0.00
34) 1,4-Difluorobenzene	6.757	114	231381	50.000	ug/l	0.00
63) Chlorobenzene-d5	10.055	117	234930	50.000	ug/l	0.00
72) 1,4-Dichlorobenzene-d4	12.024	152	119043	50.000	ug/l	0.00
System Monitoring Compounds						
33) 1,2-Dichloroethane-d4	5.952	65	89094	47.591	ug/l	0.00
Spiked Amount	50.000	Range	78 - 117	Recovery	=	95.180%
35) Dibromofluoromethane	5.385	113	74175	44.387	ug/l	0.00
Spiked Amount	50.000	Range	75 - 124	Recovery	=	88.780%
50) Toluene-d8	8.647	98	289175	45.228	ug/l	0.00
Spiked Amount	50.000	Range	92 - 112	Recovery	=	90.460%#
62) 4-Bromofluorobenzene	11.079	95	125689	49.108	ug/l	0.00
Spiked Amount	50.000	Range	83 - 123	Recovery	=	98.220%
Target Compounds						
						Qvalue
9) 1,1,2-Trichlorotrifluo...	2.331	101	7970	5.557	ug/l	92
20) Methylene Chloride	2.794	84	4264	2.374	ug/l	95
44) Trichloroethene	7.123	130	76227	44.208	ug/l	95
64) Tetrachloroethene	9.275	164	1463	1.002	ug/l #	86

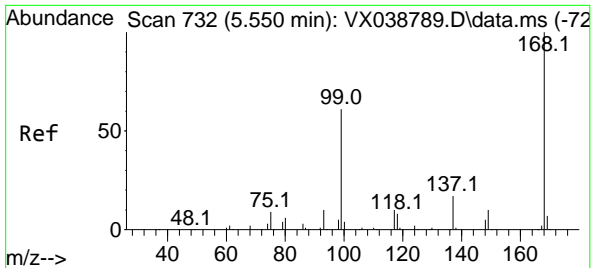
(#) = qualifier out of range (m) = manual integration (+) = signals summed

Data Path : Z:\voasrv\HPCHEM1\MSVOA_X\Data\VX112023\
 Data File : VX038951.D
 Acq On : 20 Nov 2023 12:24
 Operator : JC/MD
 Sample : 05428-01 10X
 Misc : 5.0mL/MSVOA_X/WATER
 ALS Vial : 7 Sample Multiplier: 1

Instrument :
 MSVOA_X
 ClientSampleId :
 RE120D2-20231113

Quant Time: Nov 21 00:18:01 2023
 Quant Method : Z:\voasrv\HPCHEM1\MSVOA_X\Method\82X111623W.M
 Quant Title : SW846 8260
 QLast Update : Thu Nov 16 22:59:22 2023
 Response via : Initial Calibration

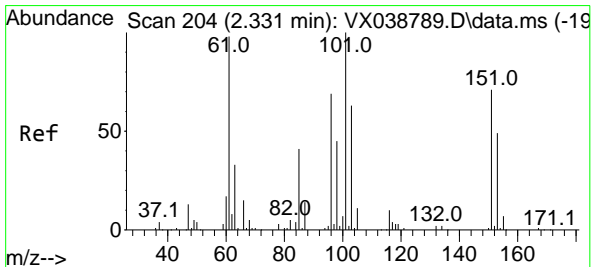
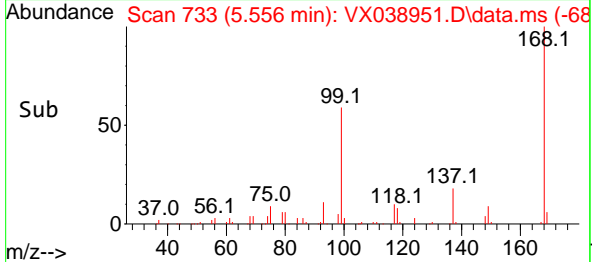
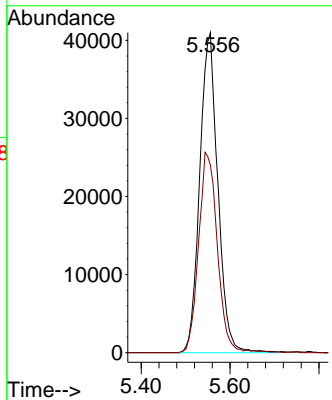
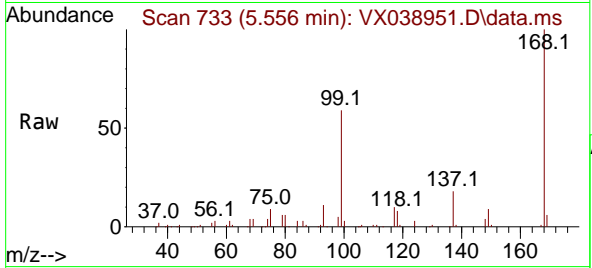




#1
 Pentafluorobenzene
 Concen: 50.000 ug/l
 RT: 5.556 min Scan# 71
 Delta R.T. 0.006 min
 Lab File: VX038951.D
 Acq: 20 Nov 2023 12:24

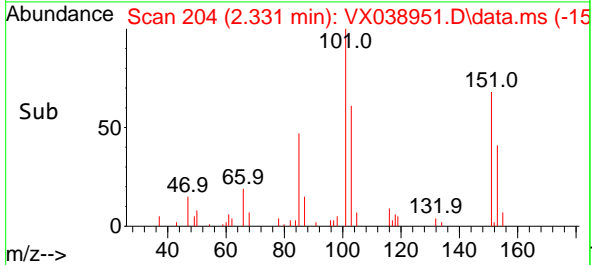
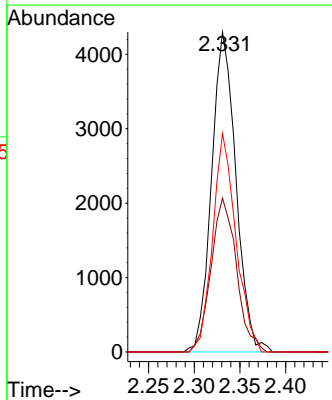
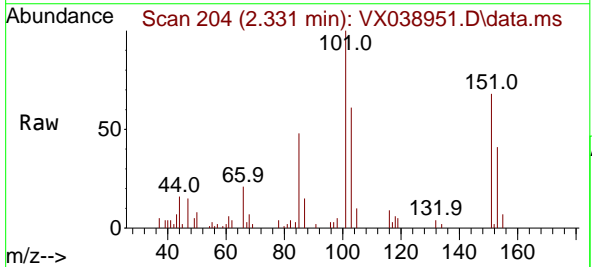
Instrument :
 MSVOA_X
 ClientSampleId :
 RE120D2-20231113

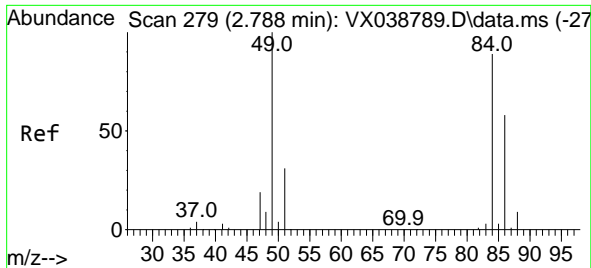
Tgt Ion:168 Resp: 116181
 Ion Ratio Lower Upper
 168 100
 99 58.6 56.6 85.0



#9
 1,1,2-Trichlorotrifluoroethane
 Concen: 5.557 ug/l
 RT: 2.331 min Scan# 204
 Delta R.T. 0.000 min
 Lab File: VX038951.D
 Acq: 20 Nov 2023 12:24

Tgt Ion:101 Resp: 7970
 Ion Ratio Lower Upper
 101 100
 85 50.3 37.0 55.6
 151 65.6 58.6 87.8



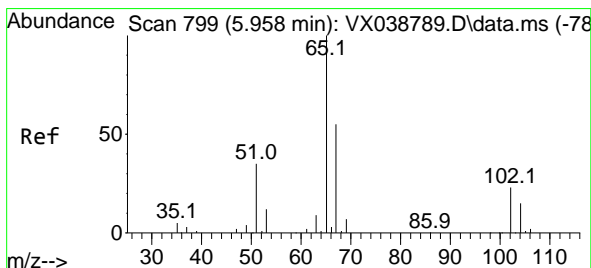
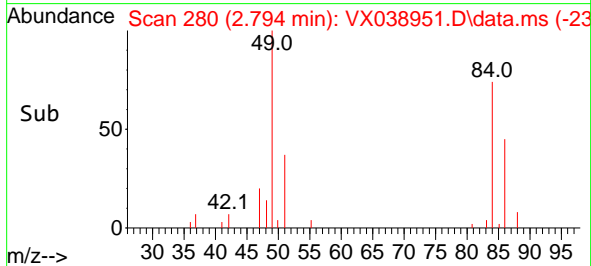
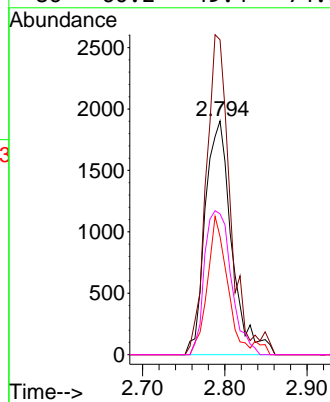
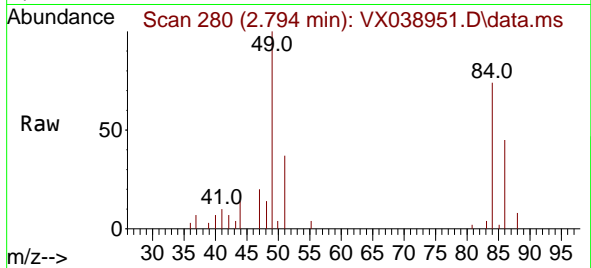


#20
 Methylene Chloride
 Concen: 2.374 ug/l
 RT: 2.794 min Scan# 21
 Delta R.T. 0.006 min
 Lab File: VX038951.D
 Acq: 20 Nov 2023 12:24

Instrument :
 MSVOA_X
 ClientSampleId :
 RE120D2-20231113

Tgt Ion: 84 Resp: 4264

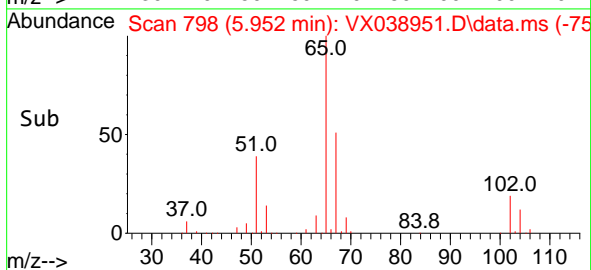
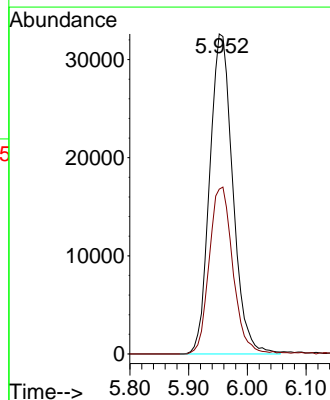
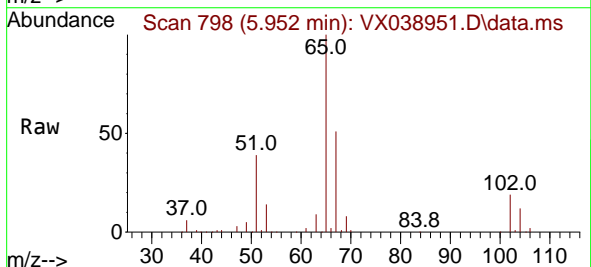
Ion	Ratio	Lower	Upper
84	100		
49	134.7	103.6	155.4
51	50.5	33.8	50.6
86	60.2	49.4	74.0

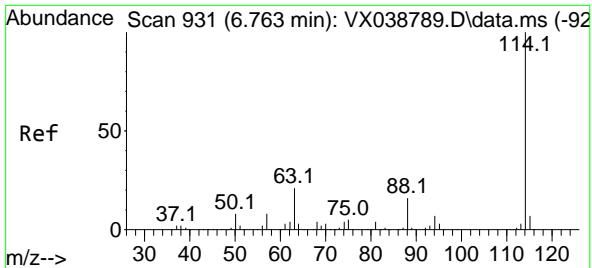


#33
 1,2-Dichloroethane-d4
 Concen: 47.591 ug/l
 RT: 5.952 min Scan# 798
 Delta R.T. -0.006 min
 Lab File: VX038951.D
 Acq: 20 Nov 2023 12:24

Tgt Ion: 65 Resp: 89094

Ion	Ratio	Lower	Upper
65	100		
67	53.5	0.0	100.2



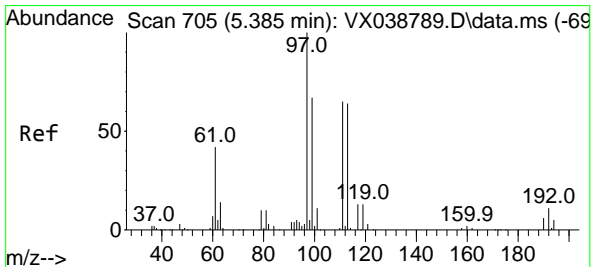
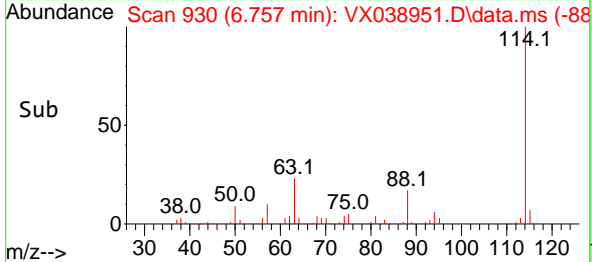
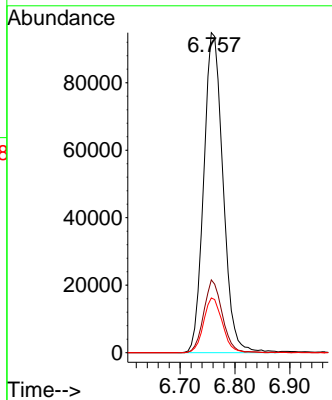
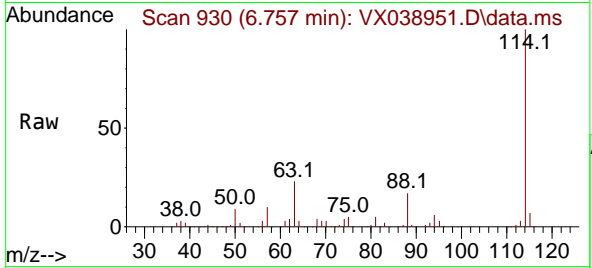


#34
 1,4-Difluorobenzene
 Concen: 50.000 ug/l
 RT: 6.757 min Scan# 911
 Delta R.T. -0.006 min
 Lab File: VX038951.D
 Acq: 20 Nov 2023 12:24

Instrument : MSVOA_X
 ClientSampleId : RE120D2-20231113

Tgt Ion:114 Resp: 231381

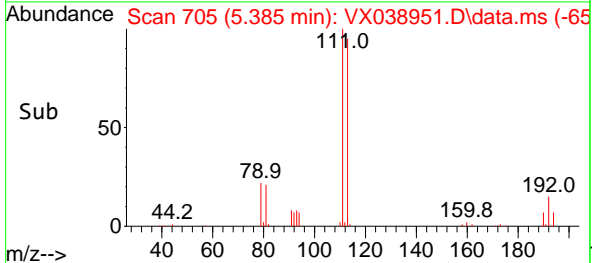
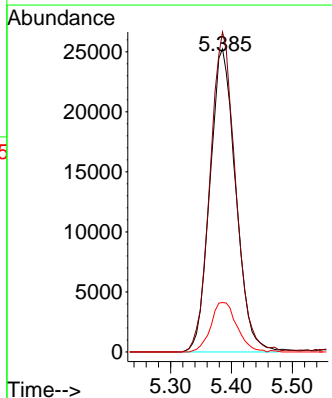
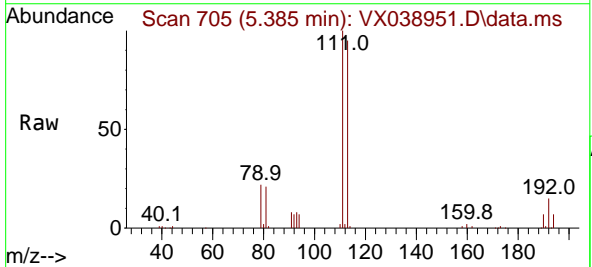
Ion	Ratio	Lower	Upper
114	100		
63	22.8	0.0	45.0
88	17.1	0.0	36.6

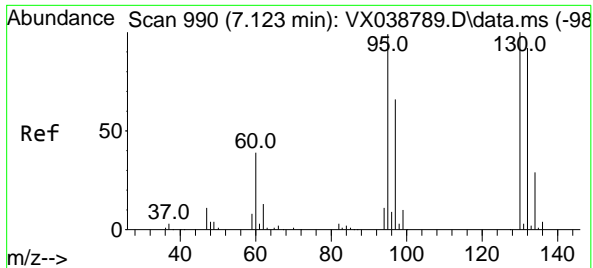


#35
 Dibromofluoromethane
 Concen: 44.387 ug/l
 RT: 5.385 min Scan# 705
 Delta R.T. 0.000 min
 Lab File: VX038951.D
 Acq: 20 Nov 2023 12:24

Tgt Ion:113 Resp: 74175

Ion	Ratio	Lower	Upper
113	100		
111	104.4	82.9	124.3
192	16.5	13.3	19.9

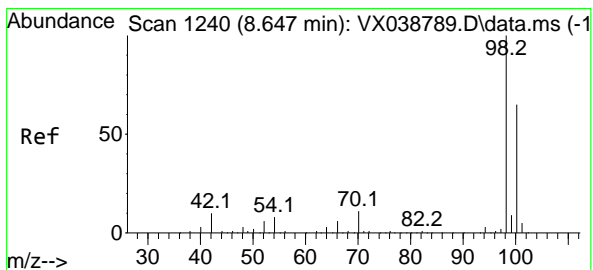
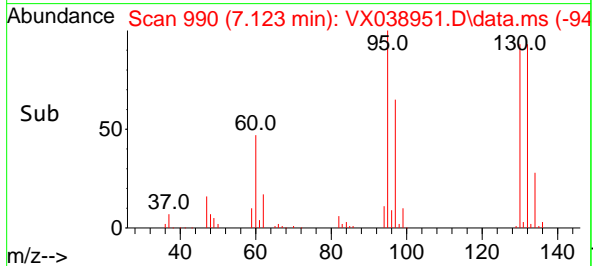
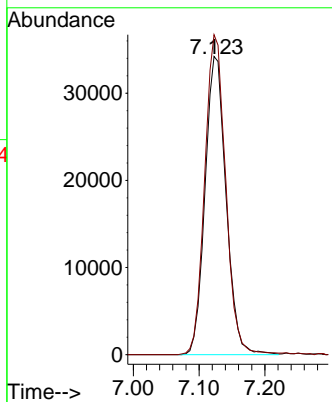
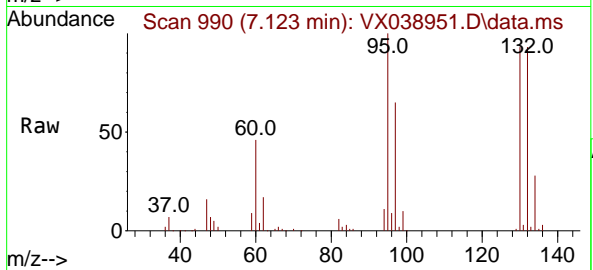




#44
 Trichloroethene
 Concen: 44.208 ug/l
 RT: 7.123 min Scan# 990
 Delta R.T. 0.000 min
 Lab File: VX038951.D
 Acq: 20 Nov 2023 12:24

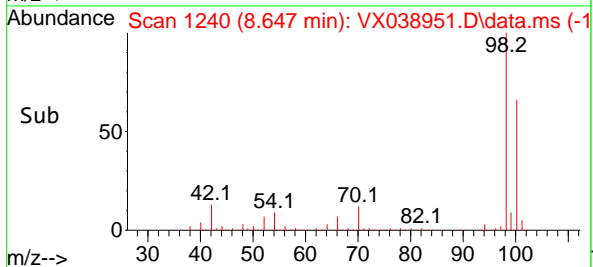
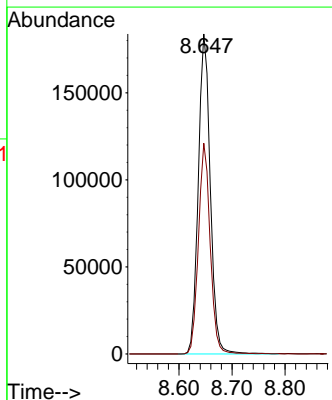
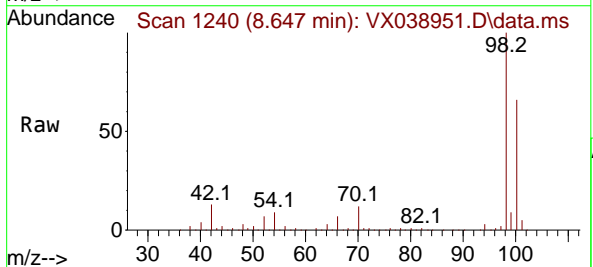
Instrument : MSVOA_X
 ClientSampleId : RE120D2-20231113

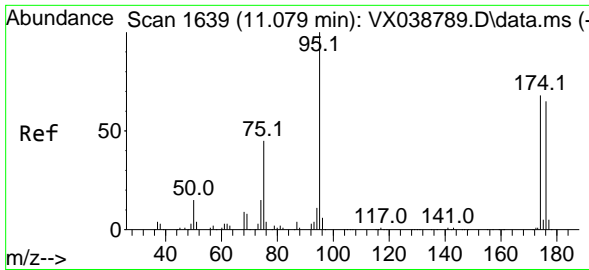
Tgt Ion:130 Resp: 76227
 Ion Ratio Lower Upper
 130 100
 95 107.3 0.0 204.4



#50
 Toluene-d8
 Concen: 45.228 ug/l
 RT: 8.647 min Scan# 1240
 Delta R.T. 0.000 min
 Lab File: VX038951.D
 Acq: 20 Nov 2023 12:24

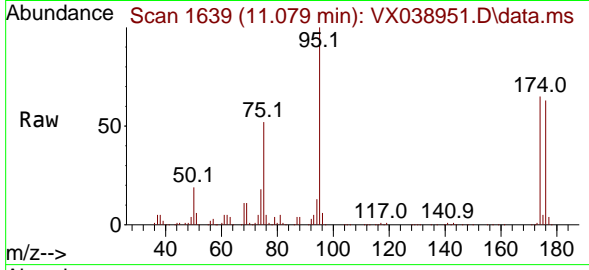
Tgt Ion: 98 Resp: 289175
 Ion Ratio Lower Upper
 98 100
 100 64.5 53.1 79.7



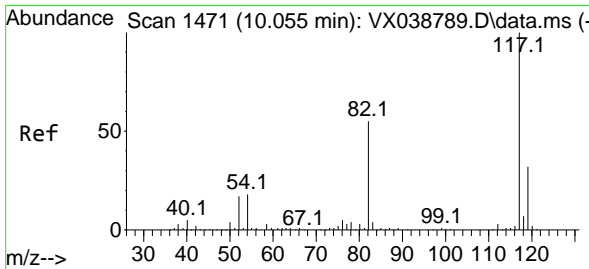
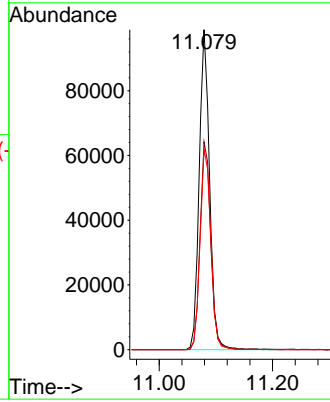
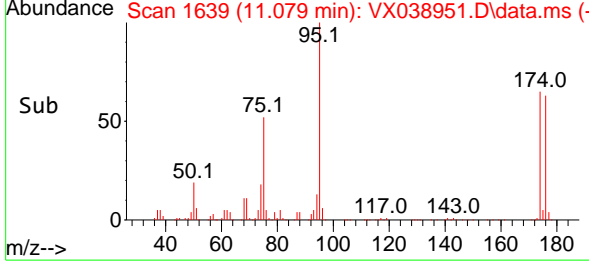


#62
 4-Bromofluorobenzene
 Concen: 49.108 ug/l
 RT: 11.079 min Scan# 1639
 Delta R.T. 0.000 min
 Lab File: VX038951.D
 Acq: 20 Nov 2023 12:24

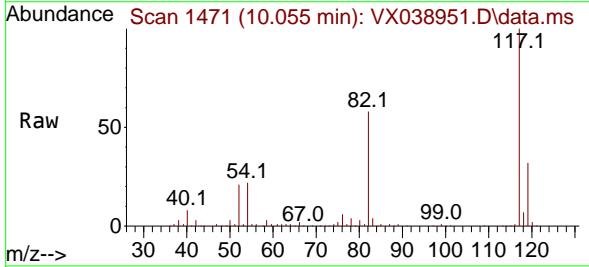
Instrument :
 MSVOA_X
 ClientSampleId :
 RE120D2-20231113



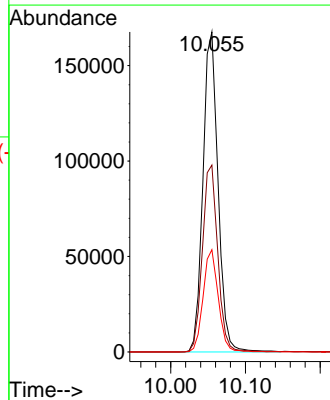
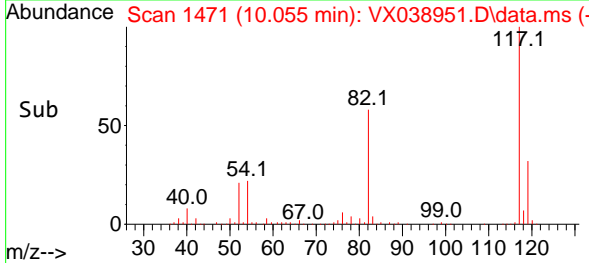
Tgt Ion: 95 Resp: 125689
 Ion Ratio Lower Upper
 95 100
 174 66.3 0.0 135.6
 176 64.8 0.0 131.0

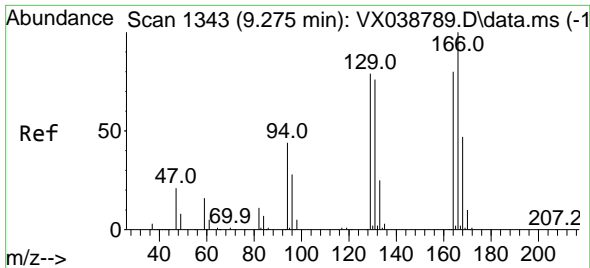


#63
 Chlorobenzene-d5
 Concen: 50.000 ug/l
 RT: 10.055 min Scan# 1471
 Delta R.T. 0.000 min
 Lab File: VX038951.D
 Acq: 20 Nov 2023 12:24



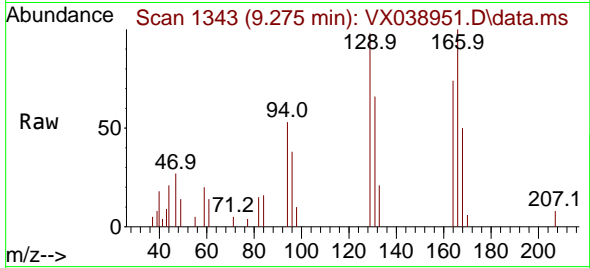
Tgt Ion: 117 Resp: 234930
 Ion Ratio Lower Upper
 117 100
 82 58.4 46.2 69.4
 119 31.9 25.5 38.3



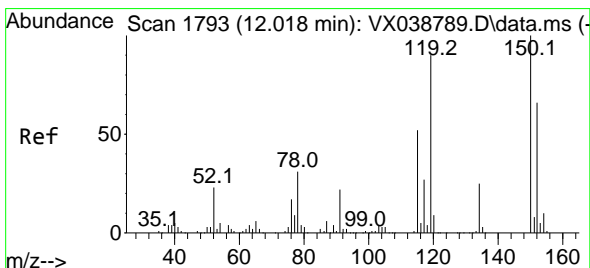
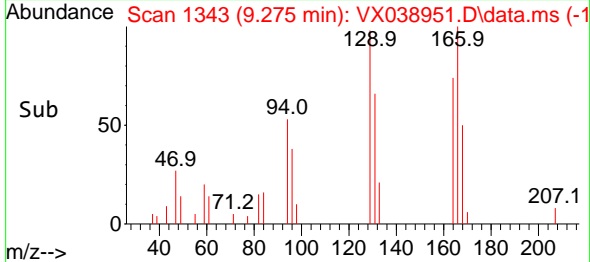
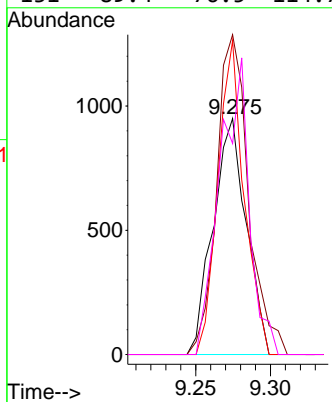


#64
 Tetrachloroethene
 Concen: 1.002 ug/l
 RT: 9.275 min Scan# 11
 Delta R.T. 0.000 min
 Lab File: VX038951.D
 Acq: 20 Nov 2023 12:24

Instrument :
 MSVOA_X
 ClientSampleId :
 RE120D2-20231113



Tgt Ion:164 Resp: 1463
 Ion Ratio Lower Upper
 164 100
 166 135.5 102.7 154.1
 129 132.9 80.4 120.6#
 131 89.4 76.5 114.7



#72
 1,4-Dichlorobenzene-d4
 Concen: 50.000 ug/l
 RT: 12.024 min Scan# 1794
 Delta R.T. 0.006 min
 Lab File: VX038951.D
 Acq: 20 Nov 2023 12:24

Tgt Ion:152 Resp: 119043
 Ion Ratio Lower Upper
 152 100
 115 65.9 43.3 129.9
 150 157.4 0.0 345.0

