

Data Path : Z:\voasrv\HPCHEM1\MSVOA_X\Data\VX112023\
 Data File : VX038953.D
 Acq On : 20 Nov 2023 13:10
 Operator : JC/MD
 Sample : 05404-30DL 10X
 Misc : 5.0mL/MSVOA_X/WATER
 ALS Vial : 9 Sample Multiplier: 1

Instrument :
 MSVOA_X
 ClientSampleId :
 RE122D1-20231110DL

Quant Time: Nov 21 00:18:54 2023
 Quant Method : Z:\voasrv\HPCHEM1\MSVOA_X\Method\82X111623W.M
 Quant Title : SW846 8260
 QLast Update : Thu Nov 16 22:59:22 2023
 Response via : Initial Calibration

Compound	R.T.	QIon	Response	Conc	Units	Dev(Min)

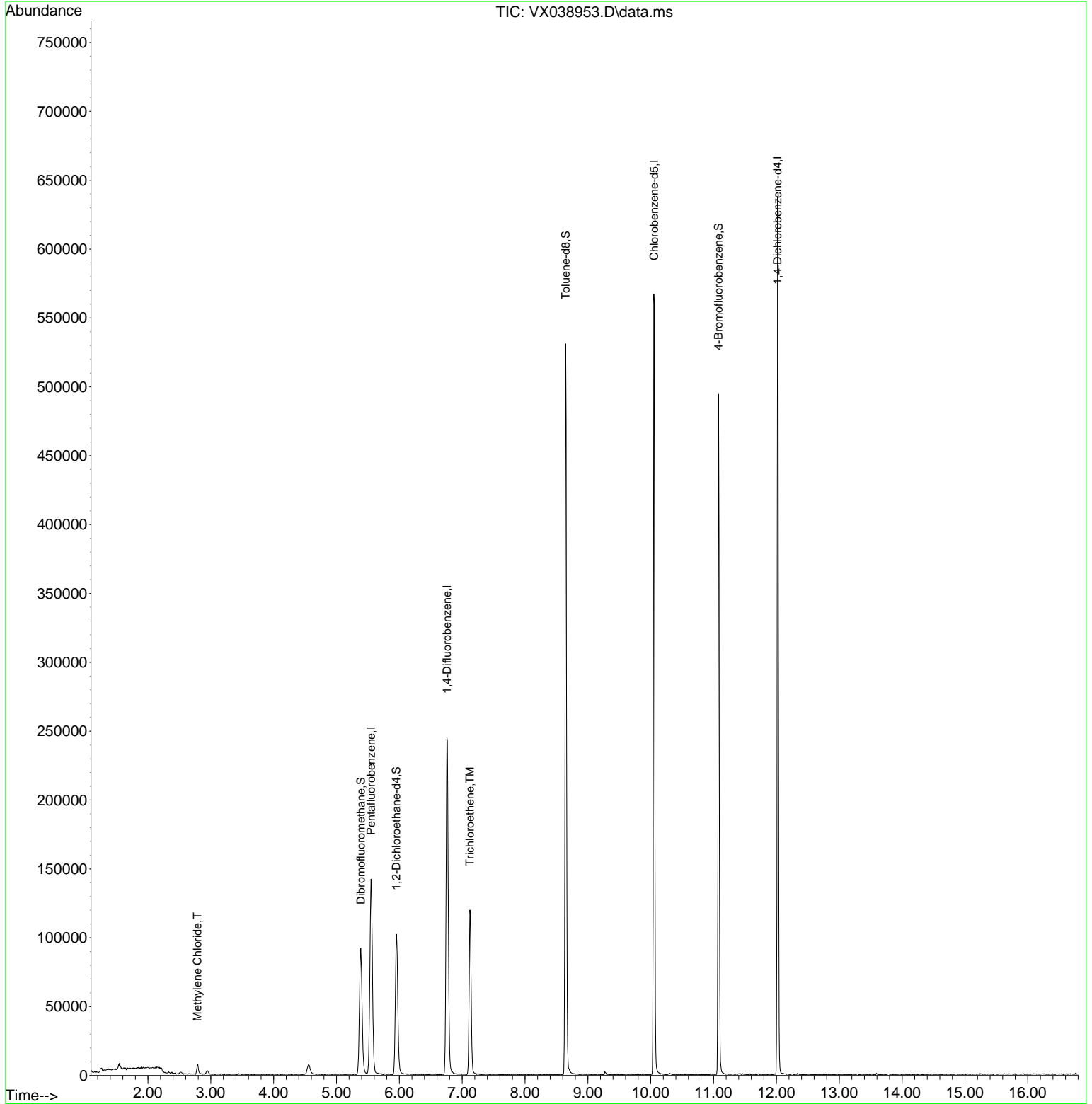
Internal Standards						
1) Pentafluorobenzene	5.550	168	125377	50.000	ug/l	0.00
34) 1,4-Difluorobenzene	6.757	114	251078	50.000	ug/l	0.00
63) Chlorobenzene-d5	10.055	117	256749	50.000	ug/l	0.00
72) 1,4-Dichlorobenzene-d4	12.018	152	128284	50.000	ug/l	0.00
System Monitoring Compounds						
33) 1,2-Dichloroethane-d4	5.952	65	97326	48.175	ug/l	0.00
Spiked Amount	50.000	Range	78 - 117	Recovery	=	96.360%
35) Dibromofluoromethane	5.385	113	80517	44.402	ug/l	0.00
Spiked Amount	50.000	Range	75 - 124	Recovery	=	88.800%
50) Toluene-d8	8.647	98	317648	45.784	ug/l	0.00
Spiked Amount	50.000	Range	92 - 112	Recovery	=	91.560%#
62) 4-Bromofluorobenzene	11.079	95	136323	49.085	ug/l	0.00
Spiked Amount	50.000	Range	83 - 123	Recovery	=	98.160%
Target Compounds						
20) Methylene Chloride	2.788	84	2930	1.511	ug/l	83
44) Trichloroethene	7.123	130	44150	23.596	ug/l	95

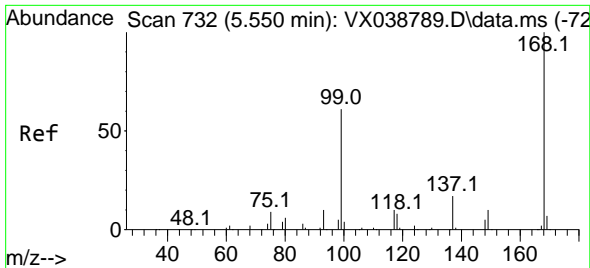
(#) = qualifier out of range (m) = manual integration (+) = signals summed

Data Path : Z:\voasrv\HPCHEM1\MSVOA_X\Data\VX112023\
 Data File : VX038953.D
 Acq On : 20 Nov 2023 13:10
 Operator : JC/MD
 Sample : 05404-30DL 10X
 Misc : 5.0mL/MSVOA_X/WATER
 ALS Vial : 9 Sample Multiplier: 1

Instrument :
 MSVOA_X
 ClientSampleId :
 RE122D1-2023110DL

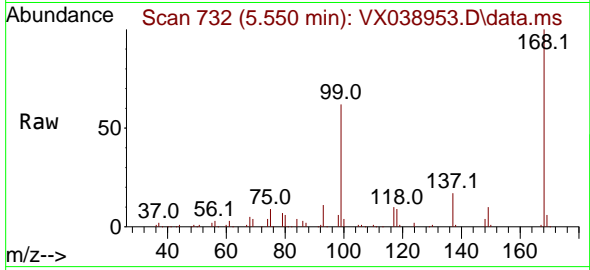
Quant Time: Nov 21 00:18:54 2023
 Quant Method : Z:\voasrv\HPCHEM1\MSVOA_X\Method\82X111623W.M
 Quant Title : SW846 8260
 QLast Update : Thu Nov 16 22:59:22 2023
 Response via : Initial Calibration



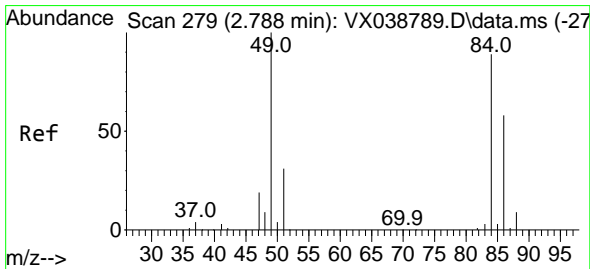
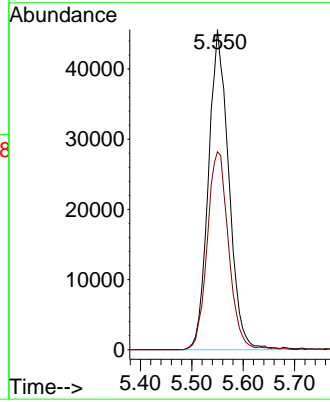
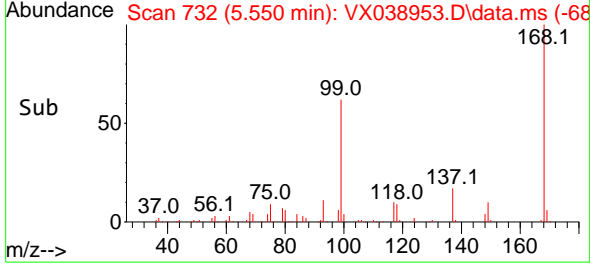


#1
 Pentafluorobenzene
 Concen: 50.000 ug/l
 RT: 5.550 min Scan# 71
 Delta R.T. -0.000 min
 Lab File: VX038953.D
 Acq: 20 Nov 2023 13:10

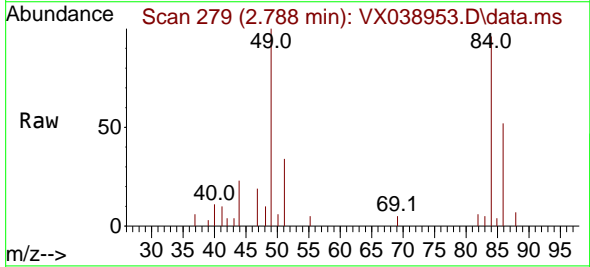
Instrument : MSVOA_X
 ClientSampleId : RE122D1-20231110DL



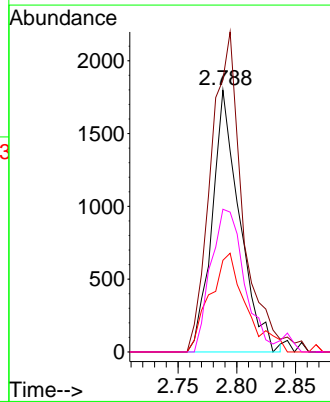
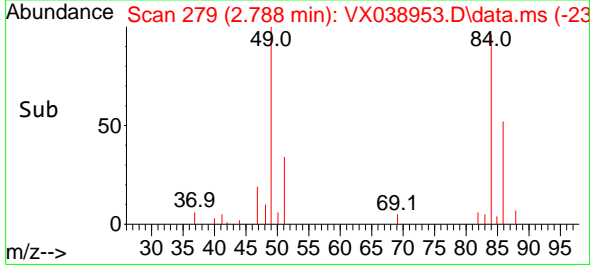
Tgt Ion:168 Resp: 125377
 Ion Ratio Lower Upper
 168 100
 99 61.8 56.6 85.0

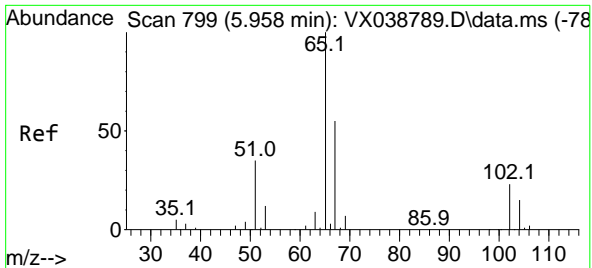


#20
 Methylene Chloride
 Concen: 1.511 ug/l
 RT: 2.788 min Scan# 279
 Delta R.T. 0.000 min
 Lab File: VX038953.D
 Acq: 20 Nov 2023 13:10



Tgt Ion: 84 Resp: 2930
 Ion Ratio Lower Upper
 84 100
 49 103.9 103.6 155.4
 51 35.0 33.8 50.6
 86 54.5 49.4 74.0

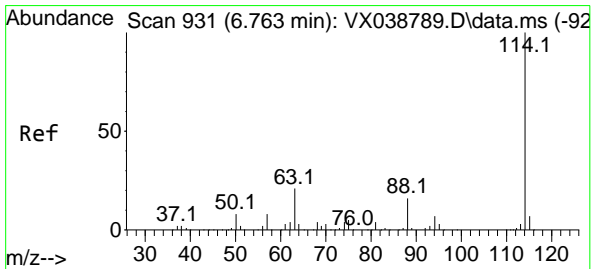
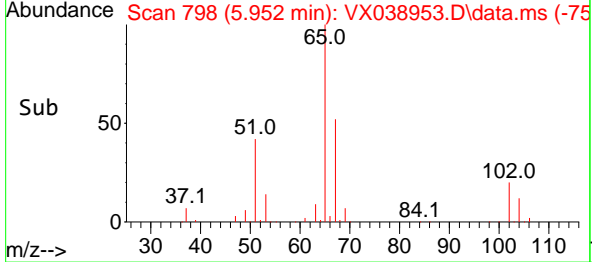
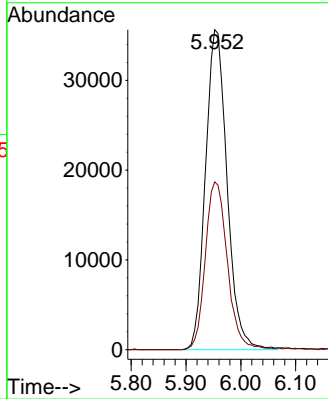
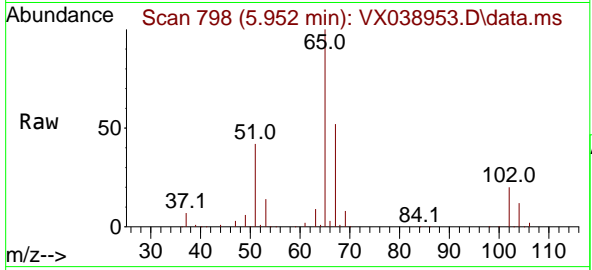




#33
 1,2-Dichloroethane-d4
 Concen: 48.175 ug/l
 RT: 5.952 min Scan# 799
 Delta R.T. -0.006 min
 Lab File: VX038953.D
 Acq: 20 Nov 2023 13:10

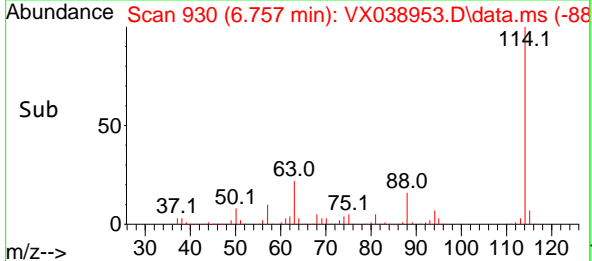
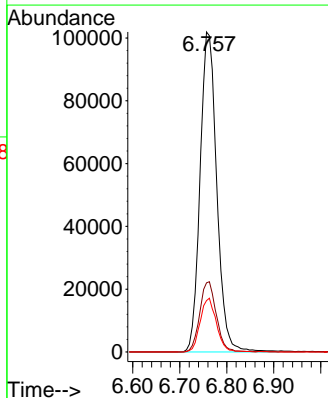
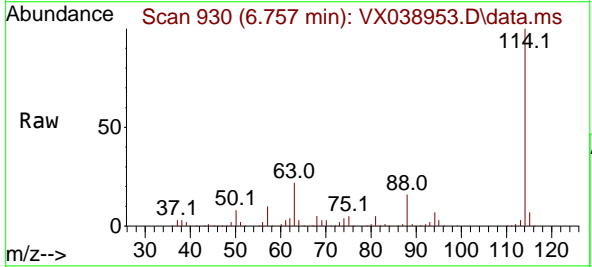
Instrument : MSVOA_X
 ClientSampleId : RE122D1-20231110DL

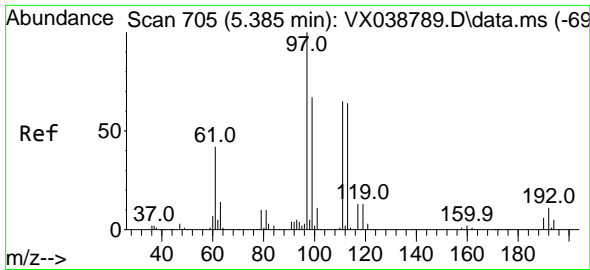
Tgt Ion: 65 Resp: 97326
 Ion Ratio Lower Upper
 65 100
 67 53.5 0.0 100.2



#34
 1,4-Difluorobenzene
 Concen: 50.000 ug/l
 RT: 6.757 min Scan# 930
 Delta R.T. -0.006 min
 Lab File: VX038953.D
 Acq: 20 Nov 2023 13:10

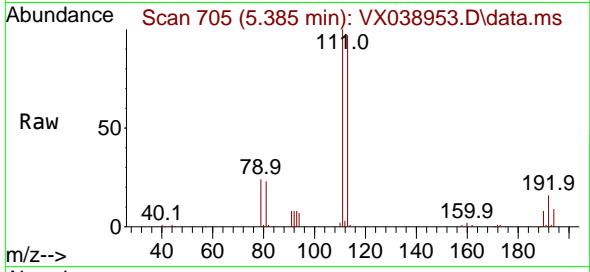
Tgt Ion: 114 Resp: 251078
 Ion Ratio Lower Upper
 114 100
 63 21.6 0.0 45.0
 88 16.1 0.0 36.6



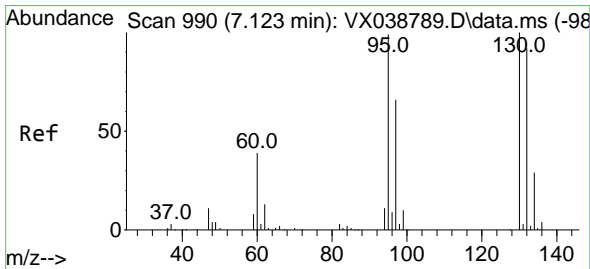
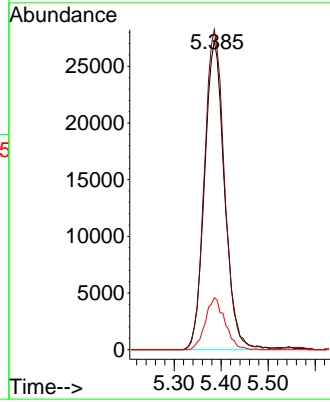
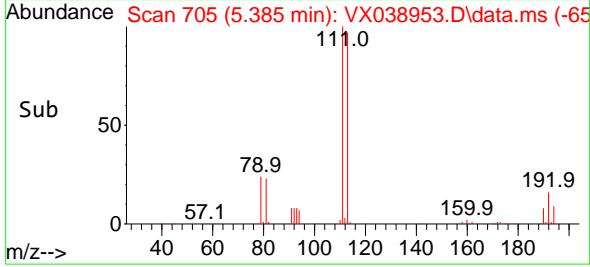


#35
 Dibromofluoromethane
 Concen: 44.402 ug/l
 RT: 5.385 min Scan# 705
 Delta R.T. 0.000 min
 Lab File: VX038953.D
 Acq: 20 Nov 2023 13:10

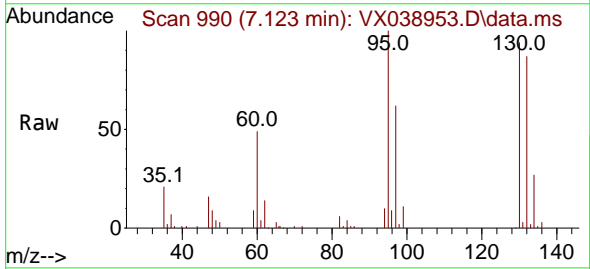
Instrument : MSVOA_X
 ClientSampleId : RE122D1-20231110DL



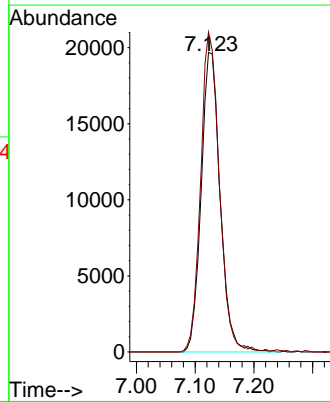
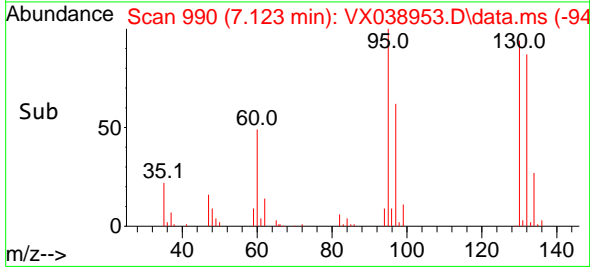
Tgt Ion:113 Resp: 80517
 Ion Ratio Lower Upper
 113 100
 111 104.1 82.9 124.3
 192 16.4 13.3 19.9

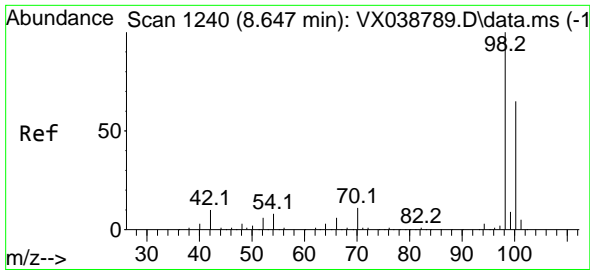


#44
 Trichloroethene
 Concen: 23.596 ug/l
 RT: 7.123 min Scan# 990
 Delta R.T. 0.000 min
 Lab File: VX038953.D
 Acq: 20 Nov 2023 13:10



Tgt Ion:130 Resp: 44150
 Ion Ratio Lower Upper
 130 100
 95 106.8 0.0 204.4

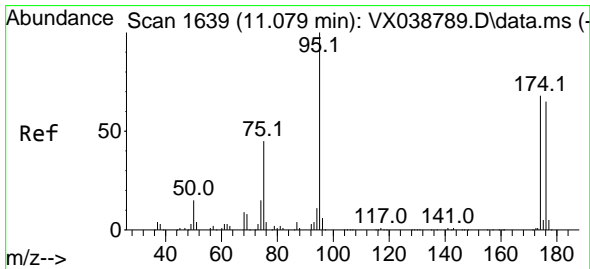
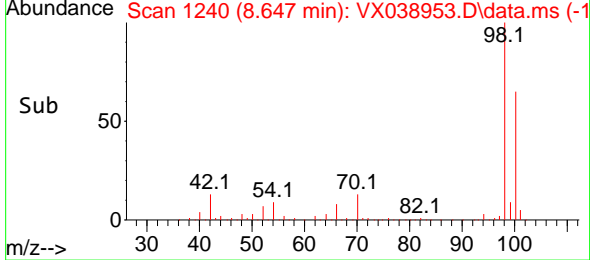
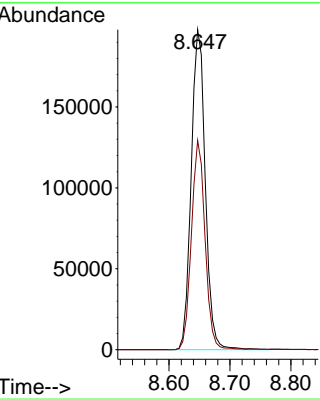
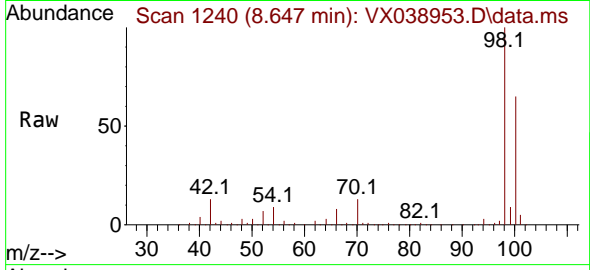




#50
 Toluene-d8
 Concen: 45.784 ug/l
 RT: 8.647 min Scan# 11
 Delta R.T. 0.000 min
 Lab File: VX038953.D
 Acq: 20 Nov 2023 13:10

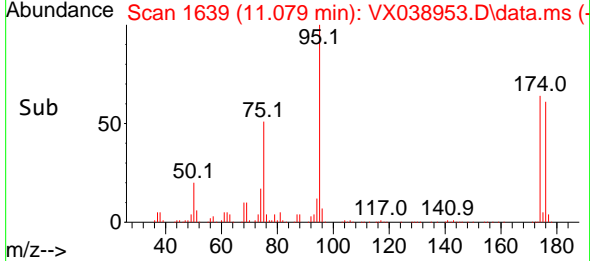
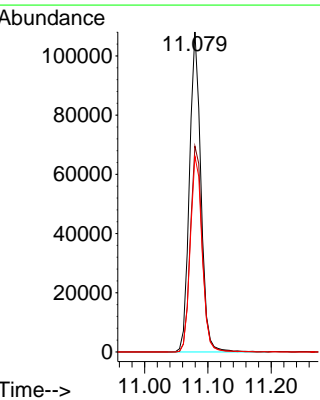
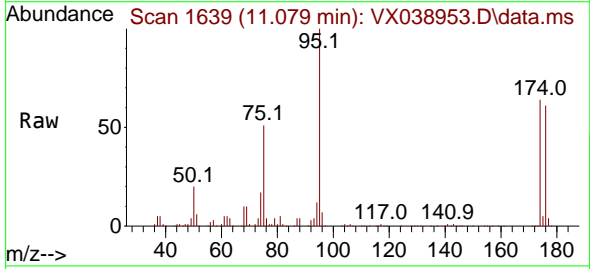
Instrument :
 MSVOA_X
 ClientSampleId :
 RE122D1-20231110DL

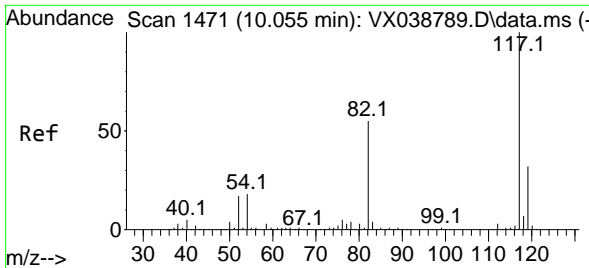
Tgt Ion: 98 Resp: 317648
 Ion Ratio Lower Upper
 98 100
 100 63.5 53.1 79.7



#62
 4-Bromofluorobenzene
 Concen: 49.085 ug/l
 RT: 11.079 min Scan# 1639
 Delta R.T. 0.000 min
 Lab File: VX038953.D
 Acq: 20 Nov 2023 13:10

Tgt Ion: 95 Resp: 136323
 Ion Ratio Lower Upper
 95 100
 174 66.8 0.0 135.6
 176 63.3 0.0 131.0

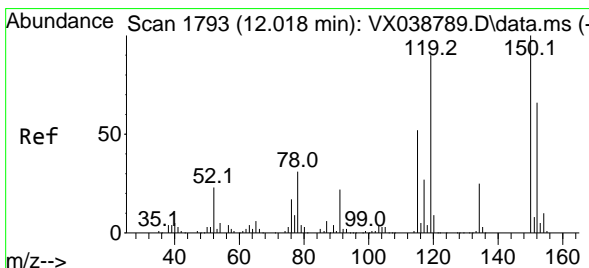
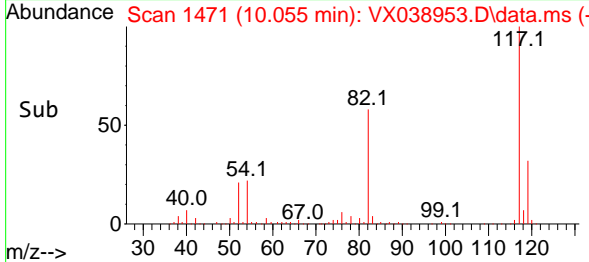
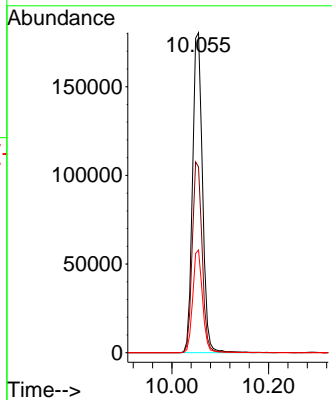
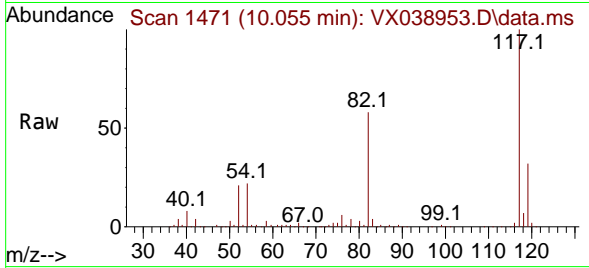




#63
 Chlorobenzene-d5
 Concen: 50.000 ug/l
 RT: 10.055 min Scan# 1471
 Delta R.T. 0.000 min
 Lab File: VX038953.D
 Acq: 20 Nov 2023 13:10

Instrument : MSVOA_X
 ClientSampleId : RE122D1-20231110DL

Tgt Ion:117 Resp: 256749
 Ion Ratio Lower Upper
 117 100
 82 58.1 46.2 69.4
 119 32.1 25.5 38.3



#72
 1,4-Dichlorobenzene-d4
 Concen: 50.000 ug/l
 RT: 12.018 min Scan# 1793
 Delta R.T. 0.000 min
 Lab File: VX038953.D
 Acq: 20 Nov 2023 13:10

Tgt Ion:152 Resp: 128284
 Ion Ratio Lower Upper
 152 100
 115 65.6 43.3 129.9
 150 157.8 0.0 345.0

