

Data Path : Z:\voasrv\HPCHEM1\MSVOA_X\Data\VX112023\
 Data File : VX038960.D
 Acq On : 20 Nov 2023 15:51
 Operator : JC/MD
 Sample : 05431-15
 Misc : 5.0mL/MSVOA_X/WATER
 ALS Vial : 16 Sample Multiplier: 1

Instrument :
 MSVOA_X
 ClientSampleId :
 FB-01-20231113

Integration Parameters: RTEINT.P

Integrator: RTE
 Smoothing : ON Filtering: 5
 Sampling : 1 Min Area: 3 % of largest Peak
 Start Thrs: 0.2 Max Peaks: 100
 Stop Thrs : 0 Peak Location: TOP

If leading or trailing edge < 100 prefer < Baseline drop else tangent >
 Peak separation: 5

Method : Z:\voasrv\HPCHEM1\MSVOA_X\Method\82X111623W.M
 Title : SW846 8260

Signal : TIC: VX038960.D\data.ms

peak #	R.T. min	first scan	max scan	last scan	PK TY	peak height	corr. area	corr. % max.	% of total
1	1.246	21	26	32	rBV2	5368	11904	1.70%	0.304%
2	2.379	205	212	219	rBV	5774	11327	1.61%	0.289%
3	2.788	273	279	285	rBV3	6277	12194	1.74%	0.311%
4	5.385	695	705	721	rBV2	76692	224593	32.01%	5.730%
5	5.550	721	732	745	rBV	115617	330493	47.10%	8.432%
6	5.958	788	799	813	rBV	86387	234888	33.48%	5.993%
7	6.763	921	931	946	rBV	206933	505304	72.01%	12.892%
8	8.573	1222	1228	1233	rBV	4196	7543	1.08%	0.192%
9	8.647	1233	1240	1250	rBV	454394	701670	100.00%	17.901%
10	10.055	1465	1471	1486	rBV	473853	674301	96.10%	17.203%
11	11.079	1634	1639	1657	rBV	396014	522933	74.53%	13.341%
12	12.018	1788	1793	1804	rBV	514880	682473	97.26%	17.412%

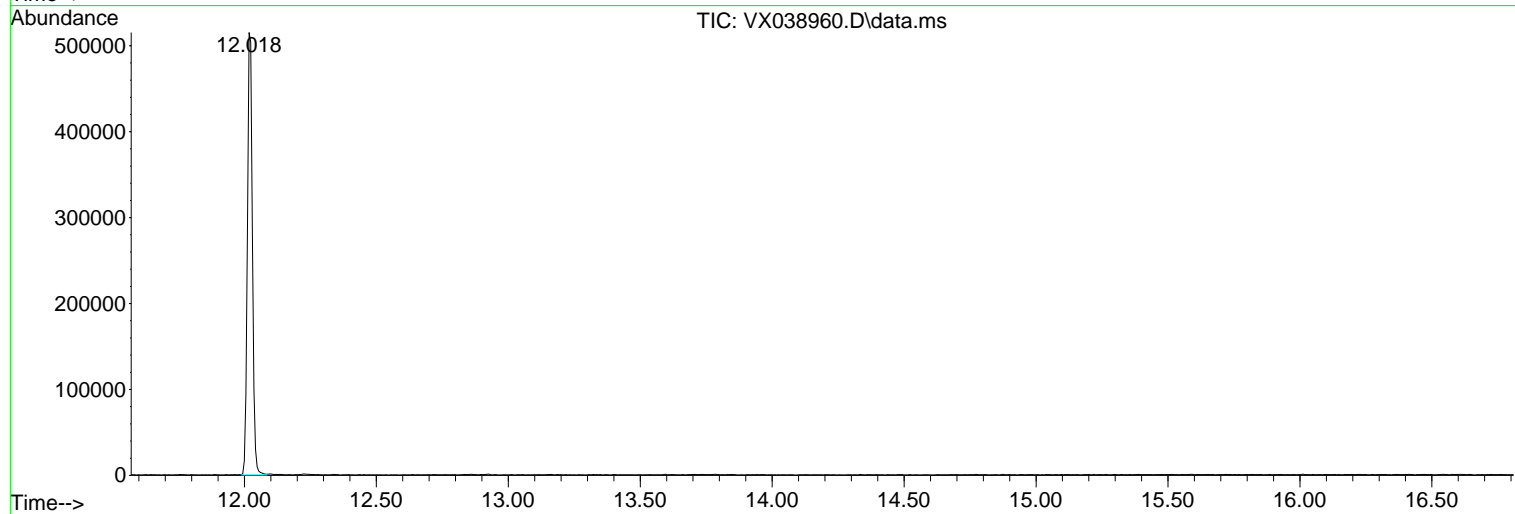
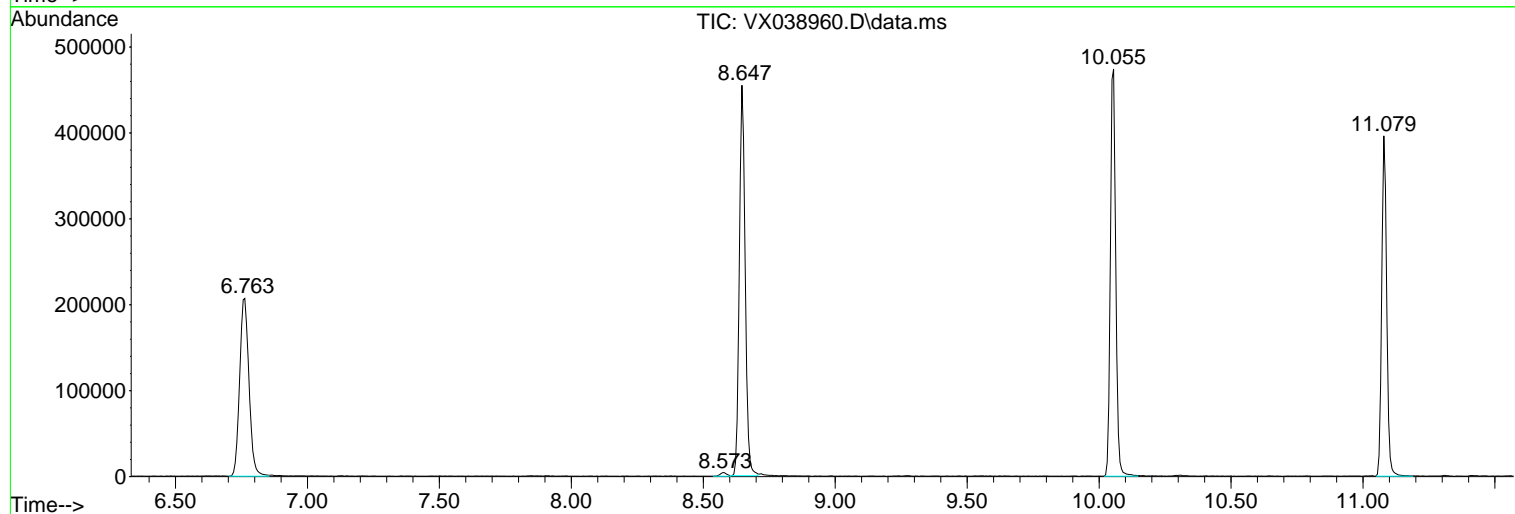
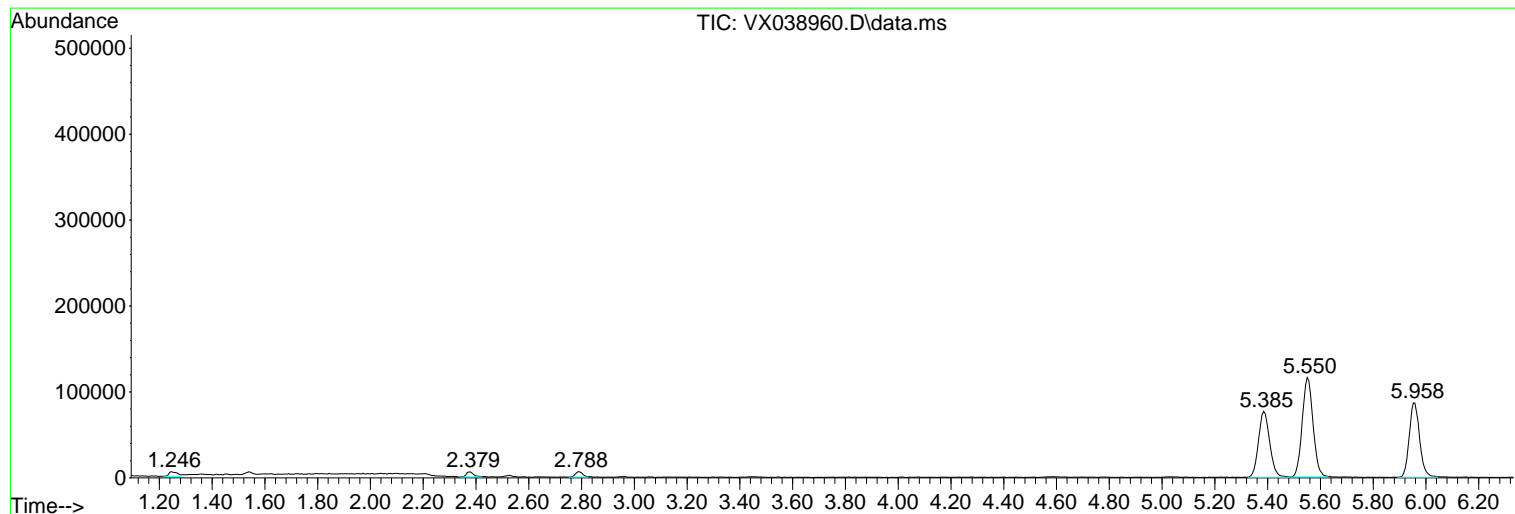
Sum of corrected areas: 3919623

Data Path : Z:\voasrv\HPCHEM1\MSVOA_X\Data\VX112023\
 Data File : VX038960.D
 Acq On : 20 Nov 2023 15:51
 Operator : JC/MD
 Sample : 05431-15
 Misc : 5.0mL/MSVOA_X/WATER
 ALS Vial : 16 Sample Multiplier: 1

Instrument :
 MSVOA_X
 ClientSampleId :
 FB-01-20231113

Quant Method : Z:\voasrv\HPCHEM1\MSVOA_X\Method\82X111623W.M
 Quant Title : SW846 8260

TIC Library : C:\Database\NIST20.L
 TIC Integration Parameters: LSCINT.P



Library Search Compound Report

Data Path : Z:\voasrv\HPCHEM1\MSVOA_X\Data\VX112023\
Data File : VX038960.D
Acq On : 20 Nov 2023 15:51
Operator : JC/MD
Sample : 05431-15
Misc : 5.0mL/MSVOA_X/WATER
ALS Vial : 16 Sample Multiplier: 1

Instrument :
MSVOA_X
ClientSampleId :
FB-01-20231113

Quant Method : Z:\voasrv\HPCHEM1\MSVOA_X\Method\82X111623W.M
Quant Title : SW846 8260

TIC Library : C:\Database\NIST20.L
TIC Integration Parameters: LSCINT.P

No Library Search Compounds Detected

Data Path : Z:\voasrv\HPCHEM1\MSVOA_X\Data\VX112023\
Data File : VX038960.D
Acq On : 20 Nov 2023 15:51
Operator : JC/MD
Sample : 05431-15
Misc : 5.0mL/MSVOA_X/WATER
ALS Vial : 16 Sample Multiplier: 1

Instrument :
MSVOA_X
ClientSampleId :
FB-01-20231113

Quant Method : Z:\voasrv\HPCHEM1\MSVOA_X\Method\82X111623W.M
Quant Title : SW846 8260

TIC Library : C:\Database\NIST0.L
TIC Integration Parameters: LSCINT.P

TIC Top Hit name	RT	EstConc	Units	Response	--Internal Standard--		
					#	RT	Resp Conc
