

Data Path : Z:\VOASRV\HPCHEM1\MSVOA X\DATA\VX112120\
 Data File : VX019515.D
 Acq On : 21 Nov 2020 00:26
 Operator : JC/MD
 Sample : PB133122TB
 Misc : 5.0mL/MSVOA X/WATER
 ALS Vial : 34 Sample Multiplier: 1

Instrument :
 MSVOA_X
 ClientSampleId :
 PB133122TB

Quant Time: Nov 21 05:43:36 2020
 Quant Method : Z:\VOASRV\HPCHEM1\MSVOA_X\METHOD\82X112120W.M
 Quant Title : SW846 8260
 QLast Update : Sat Nov 21 01:57:45 2020
 Response via : Initial Calibration

Internal Standards	R.T.	QIon	Response	Conc	Units	Dev(Min)
1) Pentafluorobenzene	5.63	168	289874	50.00	ug/l	0.00
34) 1,4-Difluorobenzene	6.83	114	463924	50.00	ug/l	0.00
63) Chlorobenzene-d5	10.10	117	398521	50.00	ug/l	0.00
72) 1,4-Dichlorobenzene-d4	12.06	152	163679	50.00	ug/l	0.00

System Monitoring Compounds

33) 1,2-Dichloroethane-d4	6.03	65	175075	46.58	ug/l	0.00
Spiked Amount	50.000	Range	61 - 141	Recovery	=	93.16%
35) Dibromofluoromethane	5.46	113	139998	48.08	ug/l	0.00
Spiked Amount	50.000	Range	69 - 133	Recovery	=	96.16%
50) Toluene-d8	8.70	98	554680	49.02	ug/l	0.00
Spiked Amount	50.000	Range	65 - 126	Recovery	=	98.04%
62) 4-Bromofluorobenzene	11.12	95	178468	43.84	ug/l	0.00
Spiked Amount	50.000	Range	58 - 135	Recovery	=	87.68%

Target Compounds

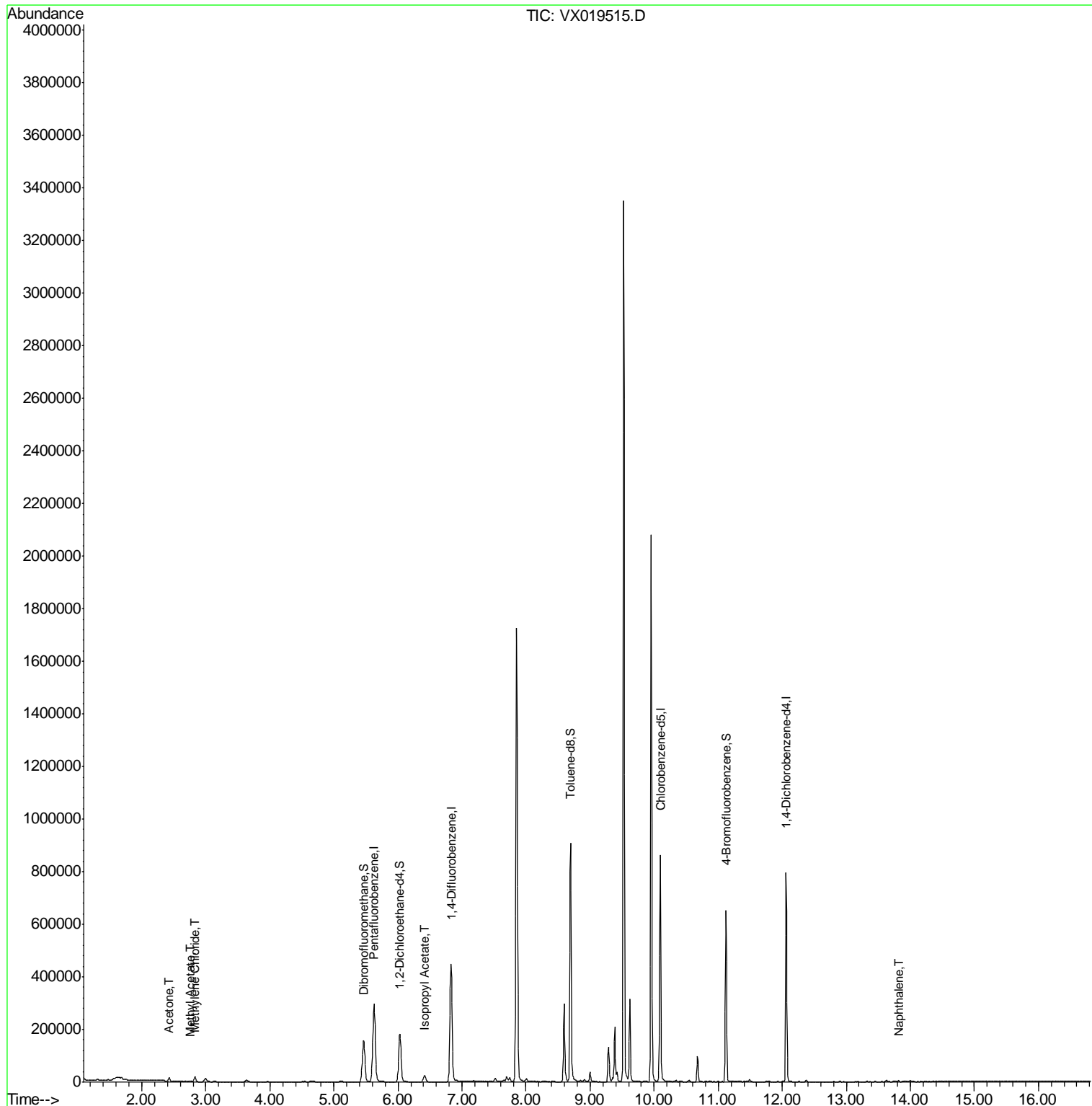
					Qvalue	
16) Acetone	2.43	43	15057	10.359	ug/l	99
18) Methyl Acetate	2.75	43	1952	1.175	ug/l	97
20) Methylene Chloride	2.83	84	8857	2.438	ug/l	95
43) Isopropyl Acetate	6.42	43	33143	4.829	ug/l	99
95) Naphthalene	13.82	128	2650	2.388	ug/l	95

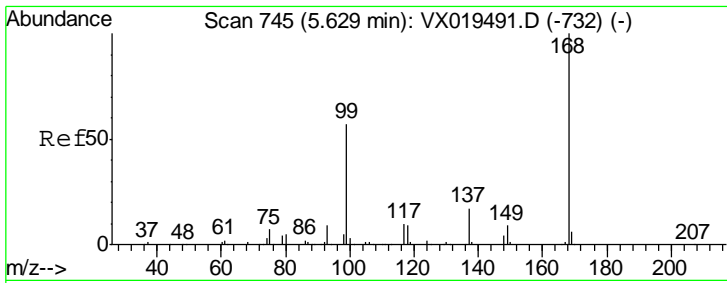
(#) = qualifier out of range (m) = manual integration (+) = signals summed

Data Path : Z:\VOASRV\HPCHEM1\MSVOA X\DATA\VX112120\
 Data File : VX019515.D
 Acq On : 21 Nov 2020 00:26
 Operator : JC/MD
 Sample : PB133122TB
 Misc : 5.0mL/MSVOA X/WATER
 ALS Vial : 34 Sample Multiplier: 1

Instrument :
 MSVOA_X
 ClientSampled :
 PB133122TB

Quant Time: Nov 21 05:43:36 2020
 Quant Method : Z:\VOASRV\HPCHEM1\MSVOA_X\METHOD\82X112120W.M
 Quant Title : SW846 8260
 QLast Update : Sat Nov 21 01:57:45 2020
 Response via : Initial Calibration

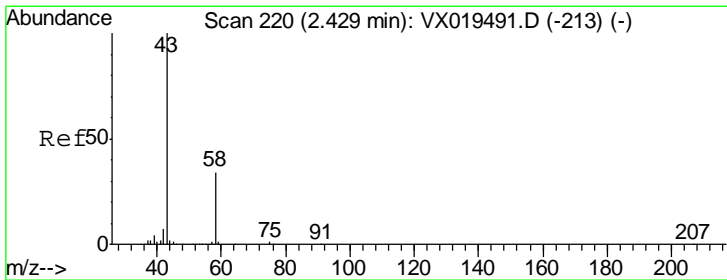
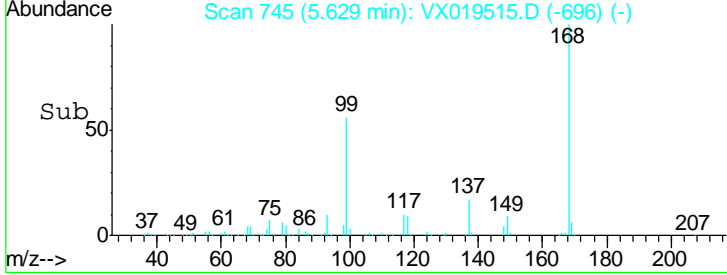
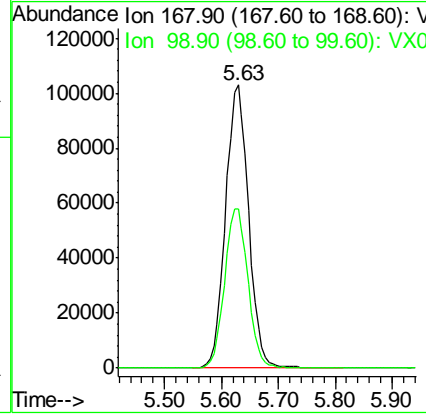
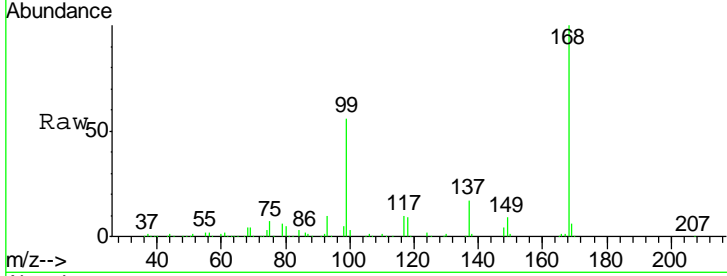




#1
 Pentafluorobenzene
 Concen: 50.000 ug/l
 RT: 5.63 min Scan# 745
 Delta R.T. -0.00 min
 Lab File: VX019515.D
 Acq: 21 Nov 2020 00:26

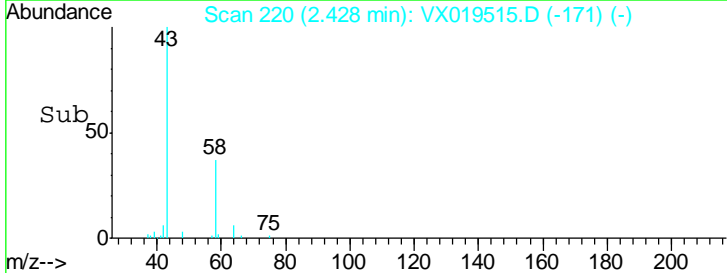
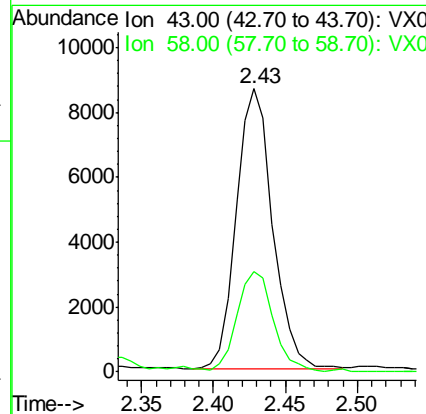
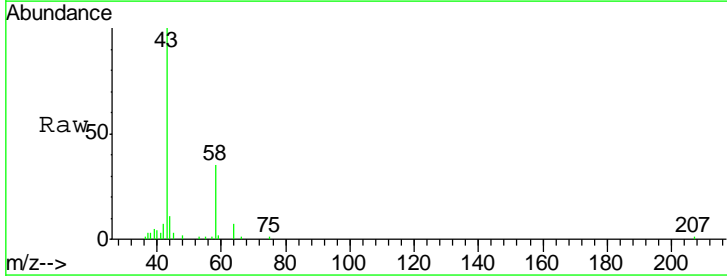
Instrument :
 MSVOA_X
 ClientSampleID :
 PB133122TB

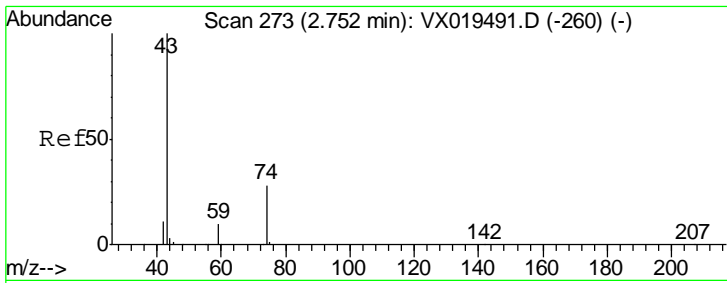
Tgt Ion	Resp	Lower	Upper
168	289874		
99	56.5	45.8	68.6



#16
 Acetone
 Concen: 10.359 ug/l
 RT: 2.43 min Scan# 220
 Delta R.T. -0.00 min
 Lab File: VX019515.D
 Acq: 21 Nov 2020 00:26

Tgt Ion	Resp	Lower	Upper
43	15057		
58	35.1	27.4	41.2

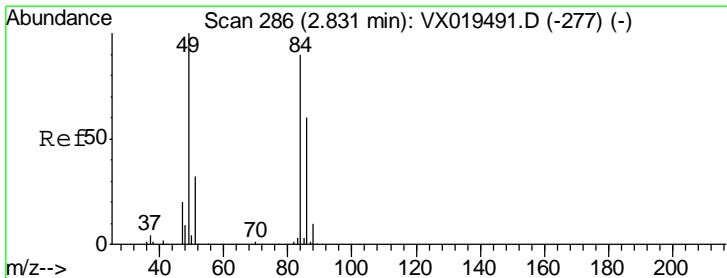
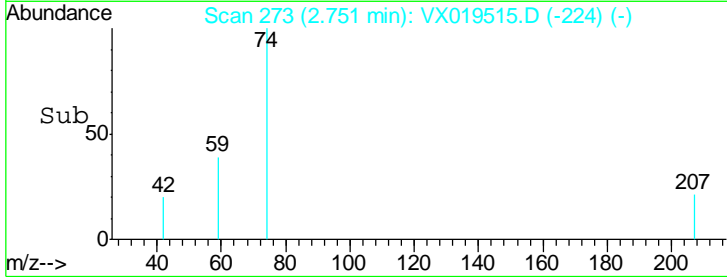
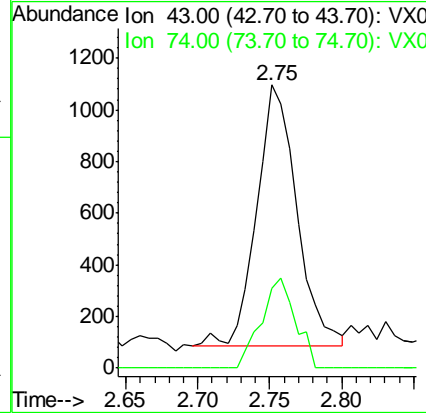
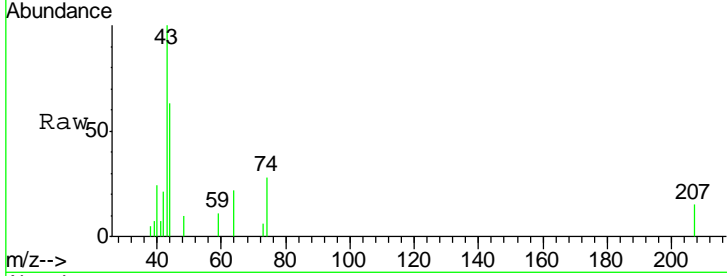




#18
Methyl Acetate
Concen: 1.175 ug/l
RT: 2.75 min Scan# 273
Delta R.T. 0.00 min
Lab File: VX019515.D
Acq: 21 Nov 2020 00:26

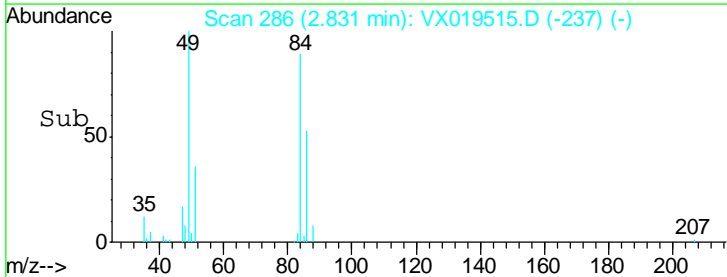
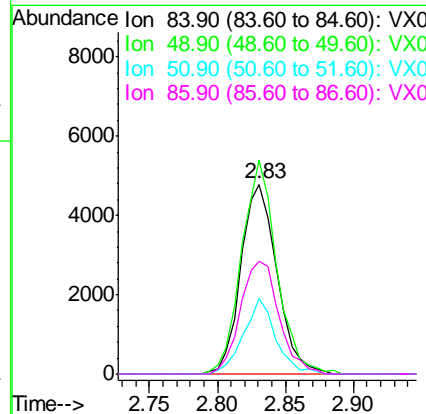
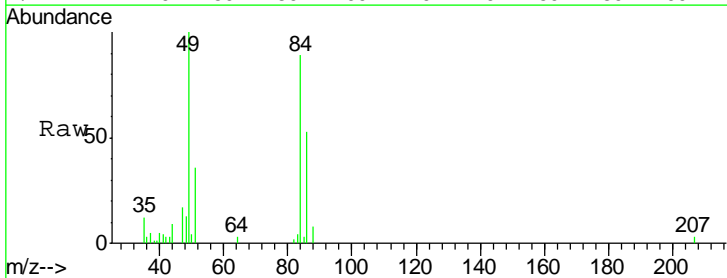
Instrument :
MSVOA_X
ClientSampled :
PB133122TB

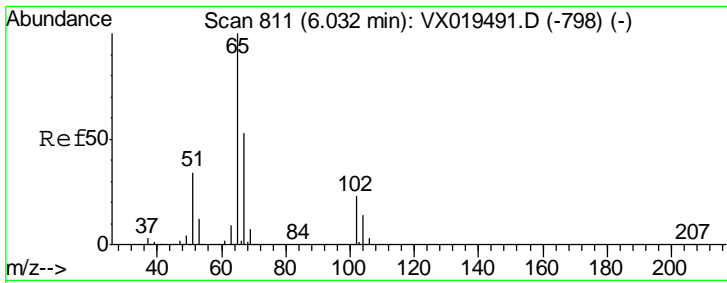
Tgt Ion	Resp	Lower	Upper
43	1952		
74	29.3	22.2	33.4



#20
Methylene Chloride
Concen: 2.438 ug/l
RT: 2.83 min Scan# 286
Delta R.T. -0.00 min
Lab File: VX019515.D
Acq: 21 Nov 2020 00:26

Tgt Ion	Resp	Lower	Upper
84	8857		
49	112.5	88.5	132.7
51	40.0	28.0	42.0
86	59.6	53.0	79.4

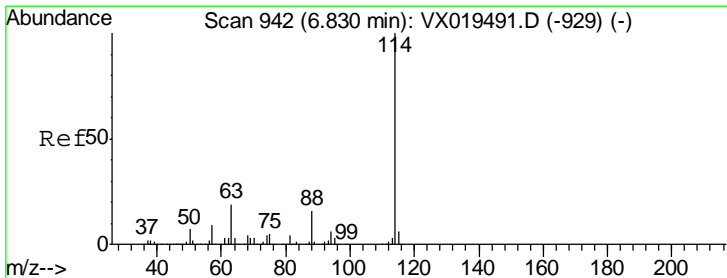
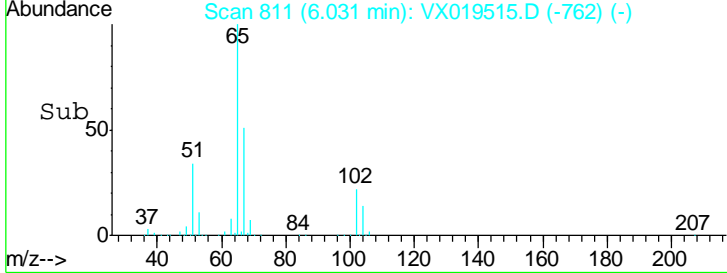
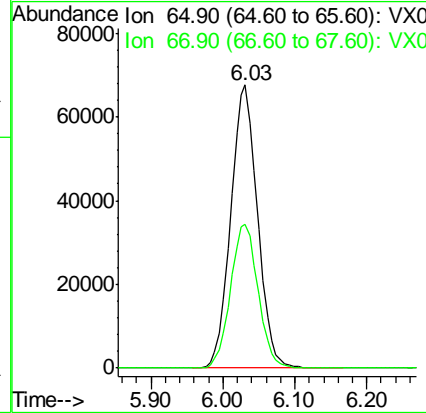
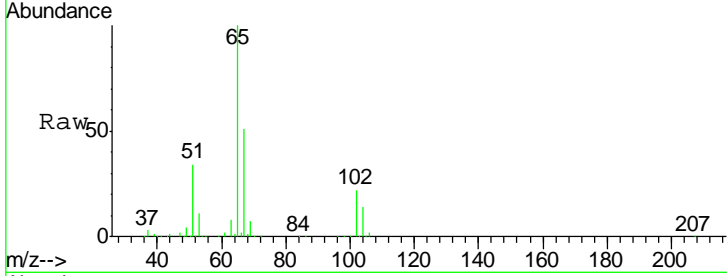




#33
 1,2-Dichloroethane-d4
 Concen: 46.582 ug/l
 RT: 6.03 min Scan# 811
 Delta R.T. -0.00 min
 Lab File: VX019515.D
 Acq: 21 Nov 2020 00:26

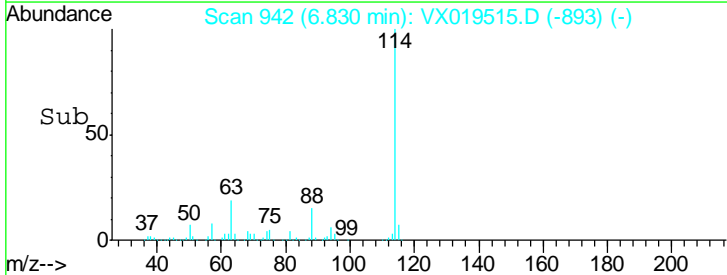
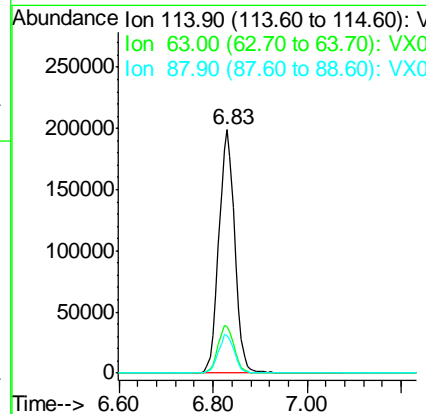
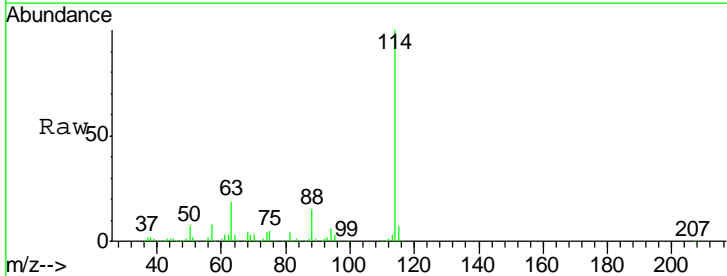
Instrument :
 MSVOA_X
ClientSampled :
 PB133122TB

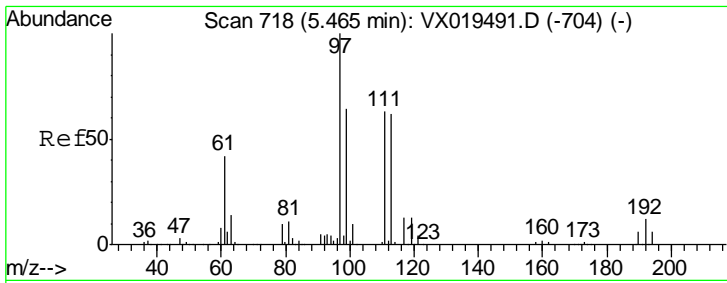
Tgt Ion	Resp	Lower	Upper
65	175075		
67	52.3	0.0	105.0



#34
 1,4-Difluorobenzene
 Concen: 50.000 ug/l
 RT: 6.83 min Scan# 942
 Delta R.T. -0.00 min
 Lab File: VX019515.D
 Acq: 21 Nov 2020 00:26

Tgt Ion	Resp	Lower	Upper
114	463924		
63	19.2	0.0	38.8
88	15.4	0.0	31.6

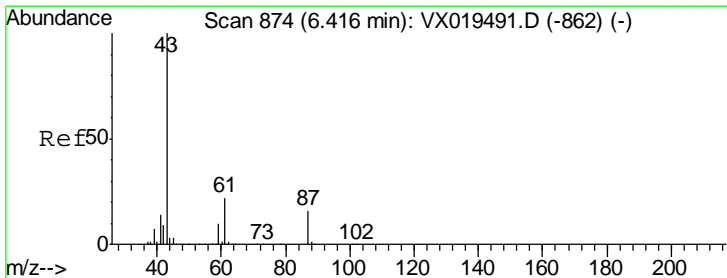
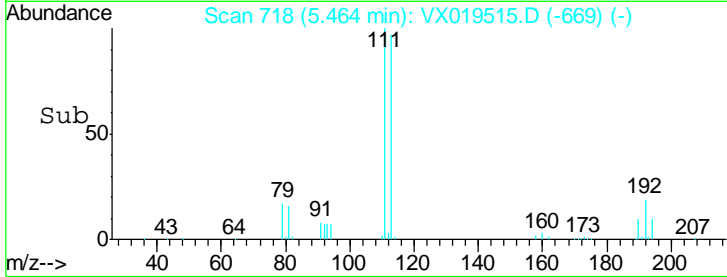
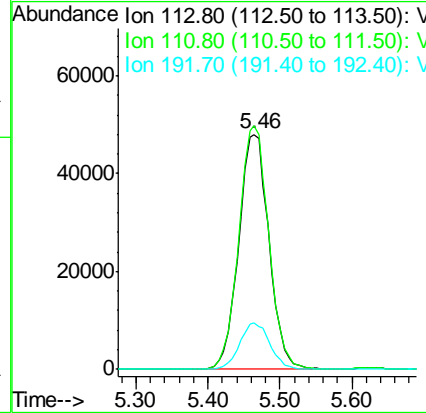
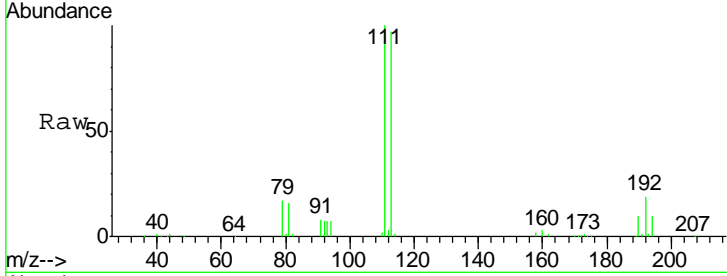




#35
 Dibromofluoromethane
 Concen: 48.075 ug/l
 RT: 5.46 min Scan# 718
 Delta R.T. -0.00 min
 Lab File: VX019515.D
 Acq: 21 Nov 2020 00:26

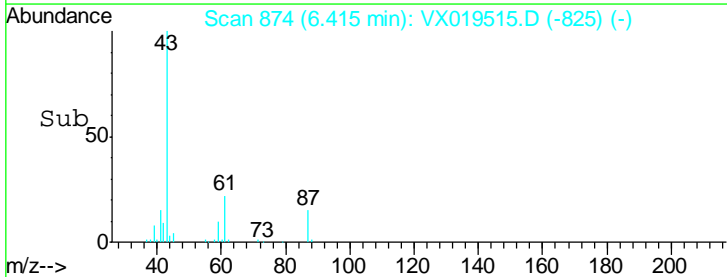
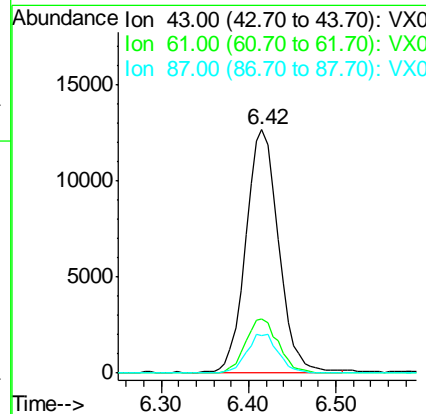
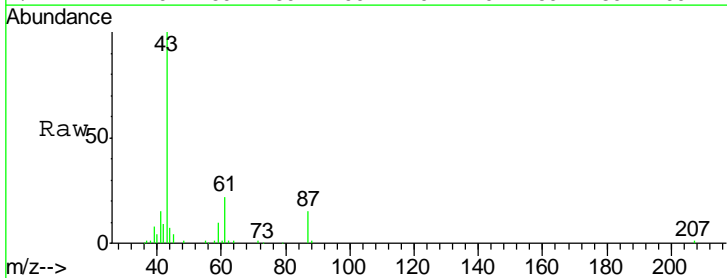
Instrument :
 MSVOA_X
 ClientSampled :
 PB133122TB

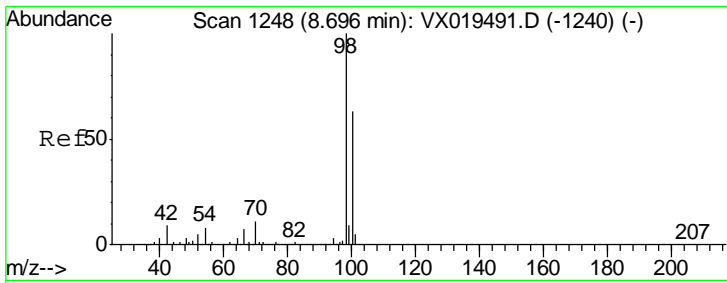
Tgt Ion	Resp	Lower	Upper
113	100		
111	102.7	81.5	122.3
192	19.8	16.2	24.2



#43
 Isopropyl Acetate
 Concen: 4.829 ug/l
 RT: 6.42 min Scan# 874
 Delta R.T. -0.00 min
 Lab File: VX019515.D
 Acq: 21 Nov 2020 00:26

Tgt Ion	Resp	Lower	Upper
43	100		
61	22.1	18.2	27.2
87	15.2	12.6	18.8

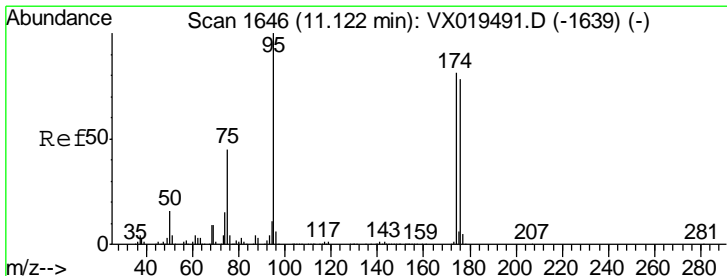
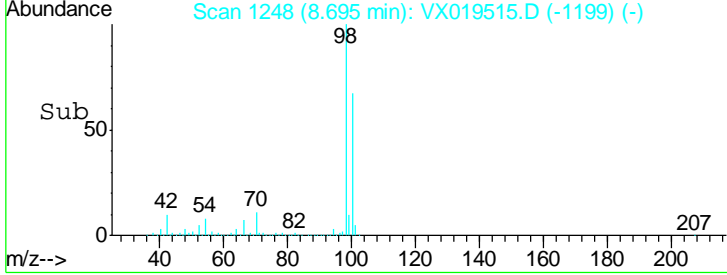
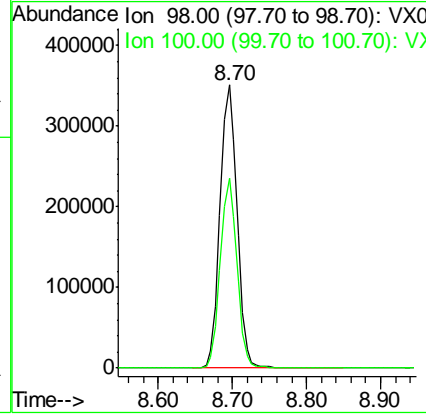
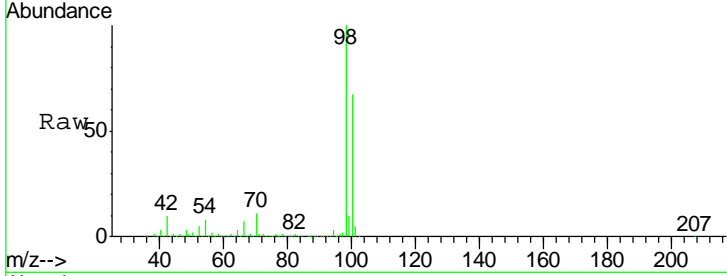




#50
 Toluene-d8
 Concen: 49.018 ug/l
 RT: 8.70 min Scan# 1248
 Delta R.T. -0.00 min
 Lab File: VX019515.D
 Acq: 21 Nov 2020 00:26

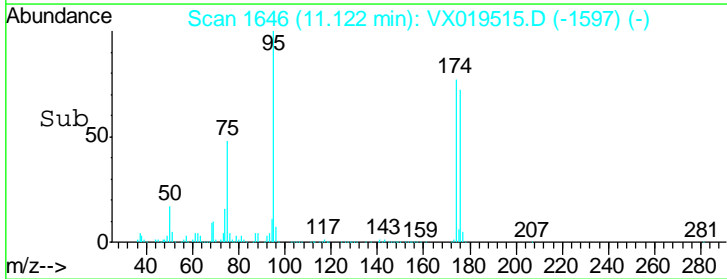
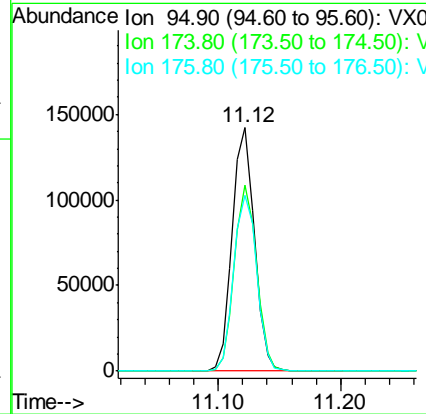
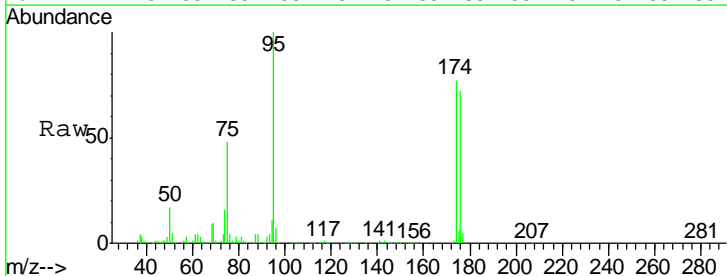
Instrument : MSVOA_X
 ClientSampled : PB133122TB

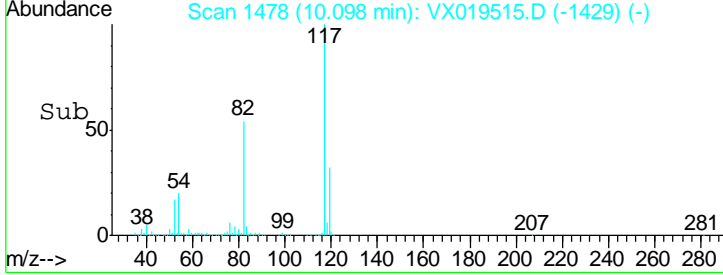
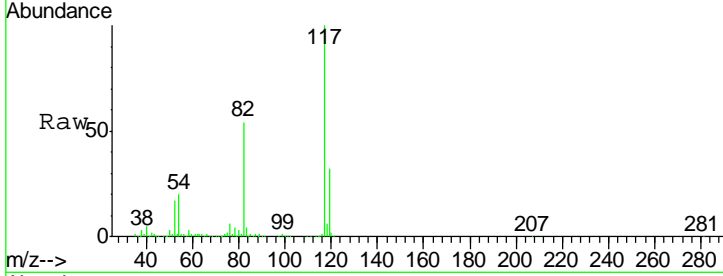
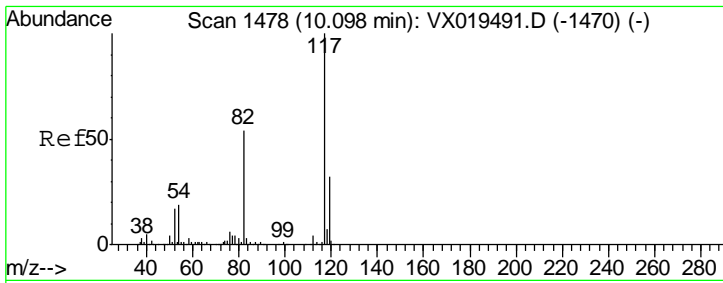
Tgt Ion	Resp	Lower	Upper
98	100		
100	65.6	52.4	78.6



#62
 4-Bromofluorobenzene
 Concen: 43.835 ug/l
 RT: 11.12 min Scan# 1646
 Delta R.T. -0.00 min
 Lab File: VX019515.D
 Acq: 21 Nov 2020 00:26

Tgt Ion	Resp	Lower	Upper
95	100		
174	76.8	0.0	156.2
176	74.7	0.0	151.4

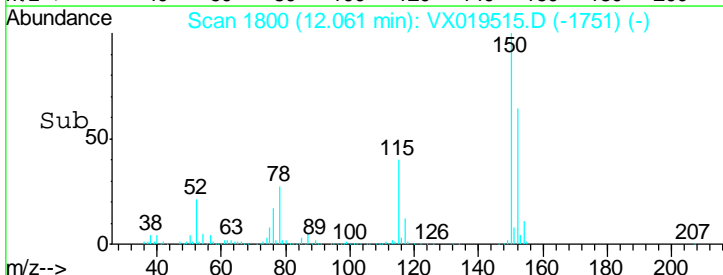
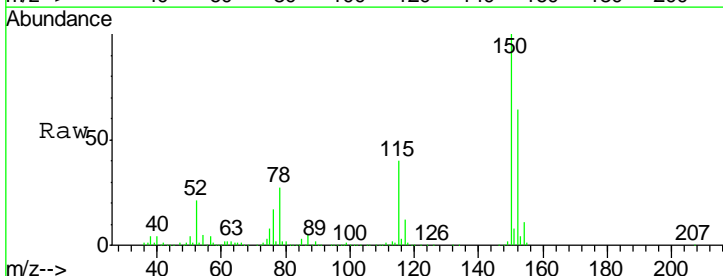
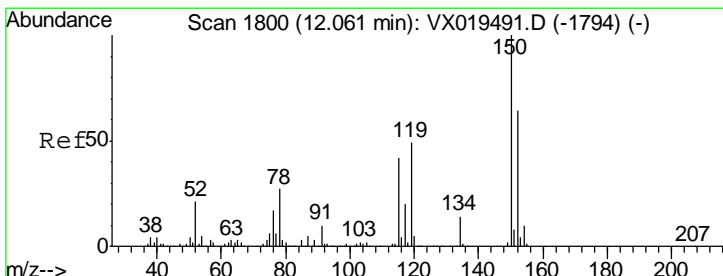
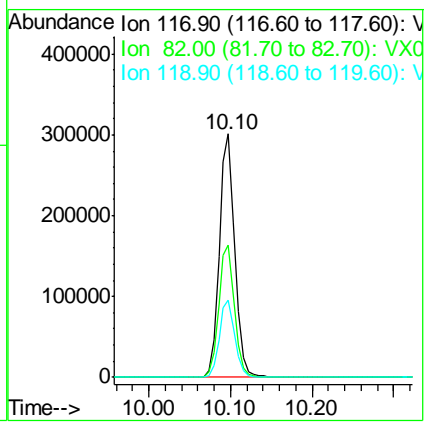




#63
 Chlorobenzene-d5
 Concen: 50.000 ug/l
 RT: 10.10 min Scan# 1478
 Delta R.T. -0.00 min
 Lab File: VX019515.D
 Acq: 21 Nov 2020 00:26

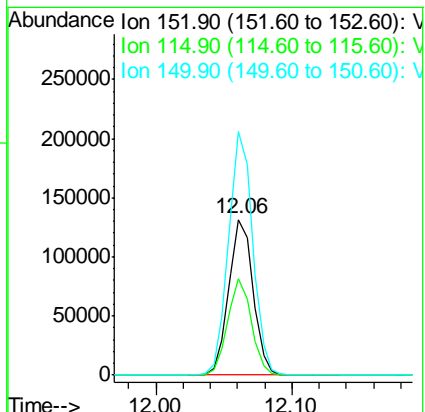
Instrument : MSVOA_X
 ClientSampled : PB133122TB

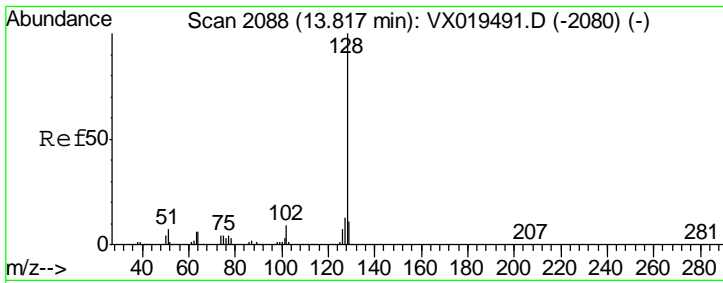
Tgt Ion	Resp	Lower	Upper
117	398521		
82	54.1	43.0	64.4
119	31.8	25.6	38.4



#72
 1,4-Dichlorobenzene-d4
 Concen: 50.000 ug/l
 RT: 12.06 min Scan# 1800
 Delta R.T. -0.00 min
 Lab File: VX019515.D
 Acq: 21 Nov 2020 00:26

Tgt Ion	Resp	Lower	Upper
152	163679		
115	60.1	41.8	125.4
150	155.5	0.0	348.2





#95
 Naphthalene
 Concen: 2.388 ug/l
 RT: 13.82 min Scan# 2088
 Delta R.T. 0.00 min
 Lab File: VX019515.D
 Acq: 21 Nov 2020 00:26

Instrument : MSVOA_X
 ClientSampleId : PB133122TB

Tot Ion: 128 Resp: 2650

Ion	Ratio	Lower	Upper
128	100		
127	15.2	10.3	15.5
129	9.2	8.7	13.1

