

Data Path : Z:\VOASRV\HPCHEM1\MSVOA X\DATA\VX112120\
 Data File : VX019501.D
 Acq On : 20 Nov 2020 17:26
 Operator : JC/MD
 Sample : L4837-04
 Misc : 5.0mL/MSVOA X/WATER
 ALS Vial : 16 Sample Multiplier: 1

Instrument :
 MSVOA_X
 ClientSampleId :
 STORAGE-BLANK-SAMPLE-MANA

Integration Parameters: RTEINT.P

Integrator: RTE
 Smoothing : ON Filtering: 5
 Sampling : 1 Min Area: 3 % of largest Peak
 Start Thrs: 0.2 Max Peaks: 100
 Stop Thrs : 0 Peak Location: TOP

If leading or trailing edge < 100 prefer < Baseline drop else tangent >
 Peak separation: 5

Method : Z:\VOASRV\HPCHEM1\MSVOA_X\METHOD\82X112120W.M
 Title : SW846 8260

Signal : TIC

peak #	R.T. min	first scan	max scan	last scan	PK TY	peak height	corr. area	corr. % max.	% of total
1	1.593	72	83	84	rBV2	8486	23875	1.76%	0.344%
2	5.465	706	718	732	rBV	153872	436586	32.09%	6.284%
3	5.629	732	745	762	rVV	282976	799029	58.74%	11.500%
4	6.025	800	810	827	rBV	174524	465494	34.22%	6.700%
5	6.824	930	941	955	rBV	424708	1016587	74.73%	14.631%
6	8.696	1240	1248	1259	rBV	875093	1360299	100.00%	19.578%
7	10.098	1471	1478	1490	rBV	799730	1113722	81.87%	16.029%
8	11.122	1640	1646	1656	rBV	622208	785387	57.74%	11.304%
9	12.061	1794	1800	1808	rBV	776450	947073	69.62%	13.631%

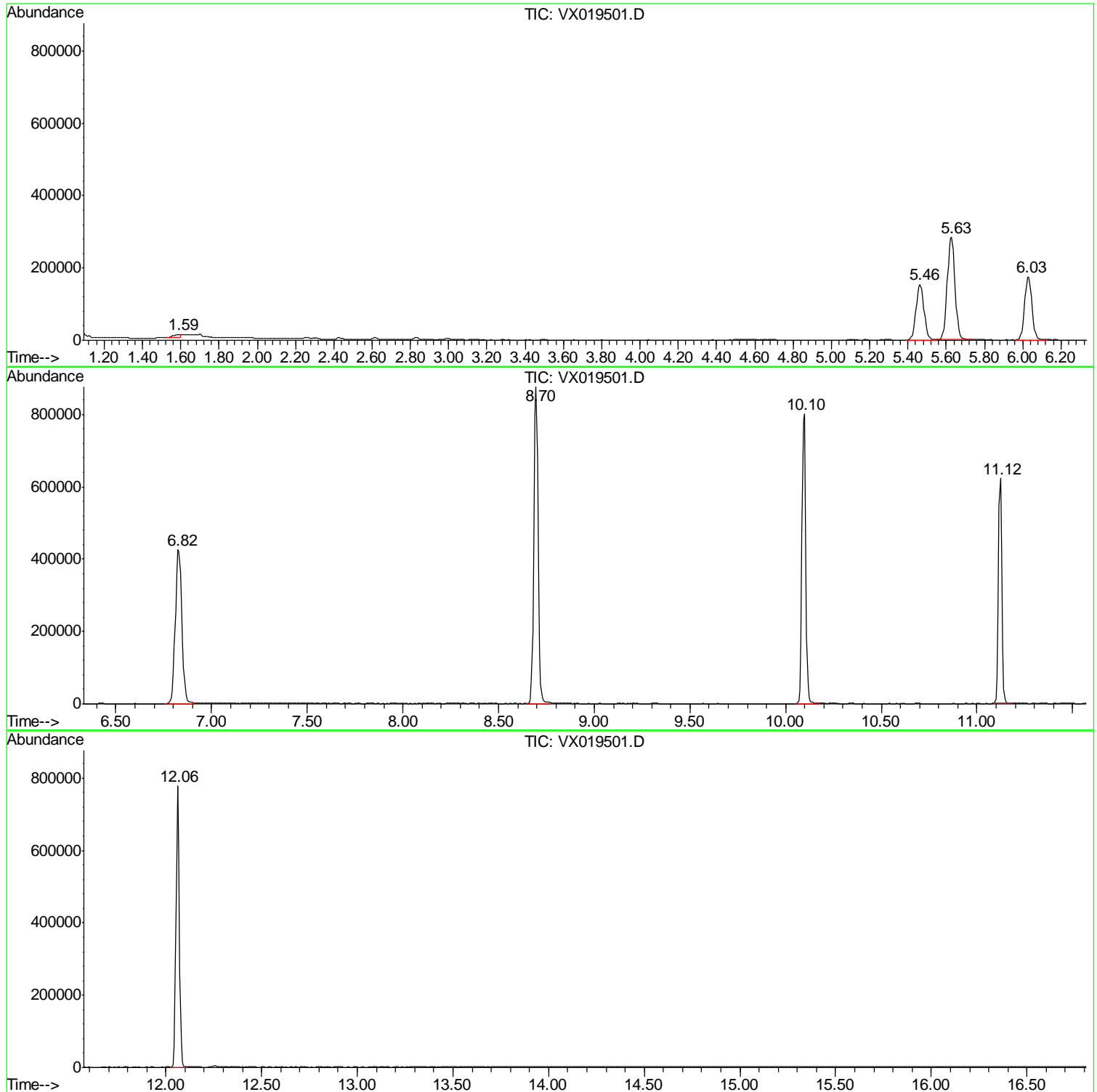
Sum of corrected areas: 6948052

Data Path : Z:\VOASRV\HPCHEM1\MSVOA X\DATA\VX112120\
Data File : VX019501.D
Acq On : 20 Nov 2020 17:26
Operator : JC/MD
Sample : L4837-04
Misc : 5.0mL/MSVOA X/WATER
ALS Vial : 16 Sample Multiplier: 1

Instrument :
MSVOA_X
ClientSampled :
STORAGE-BLANK-SAMPLE-MANA

Quant Method : Z:\VOASRV\HPCHEM1\MSVOA_X\METHOD\82X112120W.M
Quant Title : SW846 8260

TIC Library : C:\DATABASE\NIST11.L
TIC Integration Parameters: LSCINT.P



Data Path : Z:\VOASRV\HPCHEM1\MSVOA_X\DATA\VX112120\
Data File : VX019501.D
Acq On : 20 Nov 2020 17:26
Operator : JC/MD
Sample : L4837-04
Misc : 5.0mL/MSVOA_X/WATER
ALS Vial : 16 Sample Multiplier: 1

Instrument :
MSVOA_X
ClientSampleId :
STORAGE-BLANK-SAMPLE-MANA

Quant Method : Z:\VOASRV\HPCHEM1\MSVOA_X\METHOD\82X112120W.M
Quant Title : SW846 8260

TIC Library : C:\DATABASE\NIST11.L
TIC Integration Parameters: LSCINT.P

No Library Search Compounds Detected

Data Path : Z:\VOASRV\HPCHEM1\MSVOA_X\DATA\VX112120\
Data File : VX019501.D
Acq On : 20 Nov 2020 17:26
Operator : JC/MD
Sample : L4837-04
Misc : 5.0mL/MSVOA_X/WATER
ALS Vial : 16 Sample Multiplier: 1

Instrument :
MSVOA_X
ClientSampleId :
STORAGE-BLANK-SAMPLE-MANA

Quant Method : Z:\VOASRV\HPCHEM1\MSVOA_X\METHOD\82X112120W.M
Quant Title : SW846 8260

TIC Library : C:\DATABASE\NIST11.L
TIC Integration Parameters: LSCINT.P

TIC Top Hit name	RT	EstConc	Units	Response	--Internal Standard--			
					#	RT	Resp	Conc
