

Data Path : Z:\voasrv\HPCHEM1\MSVOA\_X\Data\VX112122\  
 Data File : VX032953.D  
 Acq On : 21 Nov 2022 15:32  
 Operator : JC/MD  
 Sample : N5729-01  
 Misc : 5.0mL/MSVOA\_X/WATER  
 ALS Vial : 15 Sample Multiplier: 1

Instrument :  
 MSVOA\_X  
 ClientSampleId :  
 RE103D3-20221116

Quant Time: Nov 22 05:12:14 2022  
 Quant Method : Z:\voasrv\HPCHEM1\MSVOA\_X\Method\82X102622W.M  
 Quant Title : SW846 8260  
 QLast Update : Thu Oct 27 08:28:06 2022  
 Response via : Initial Calibration

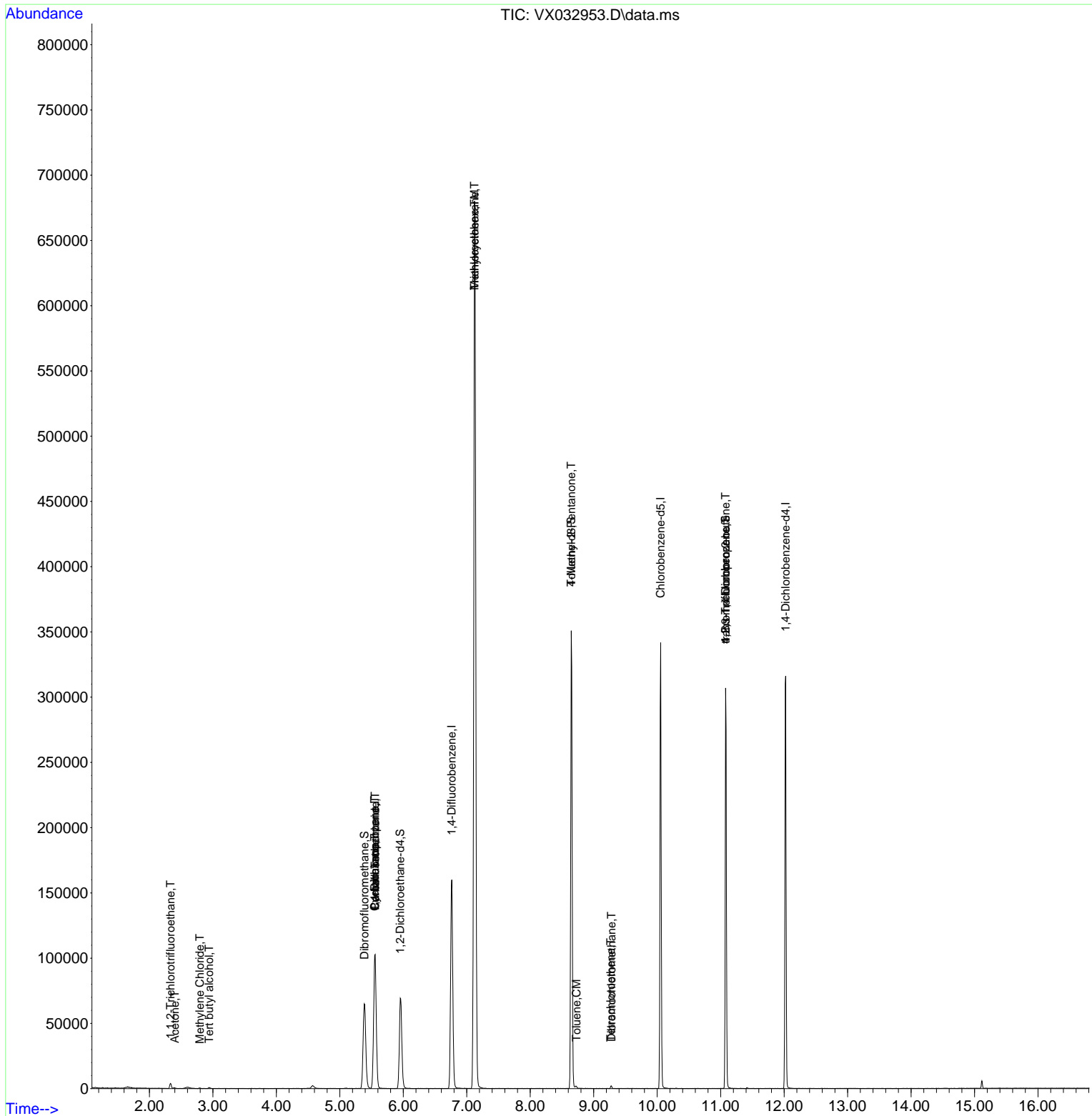
Compound	R.T.	QIon	Response	Conc	Units	Dev(Min)
-----						
Internal Standards						
1) Pentafluorobenzene	5.556	168	97063	50.000	ug/l	0.00
34) 1,4-Difluorobenzene	6.763	114	163588	50.000	ug/l	0.00
63) Chlorobenzene-d5	10.055	117	147942	50.000	ug/l	0.00
72) 1,4-Dichlorobenzene-d4	12.024	152	65244	50.000	ug/l	0.00
System Monitoring Compounds						
33) 1,2-Dichloroethane-d4	5.952	65	70301	52.126	ug/l	0.00
Spiked Amount	50.000	Range	78 - 117	Recovery	=	104.260%
35) Dibromofluoromethane	5.385	113	56859	48.727	ug/l	0.00
Spiked Amount	50.000	Range	75 - 124	Recovery	=	97.460%
50) Toluene-d8	8.647	98	205588	50.668	ug/l	0.00
Spiked Amount	50.000	Range	92 - 112	Recovery	=	101.340%
62) 4-Bromofluorobenzene	11.079	95	76607	48.333	ug/l	0.00
Spiked Amount	50.000	Range	83 - 123	Recovery	=	96.660%
Target Compounds						
						Qvalue
9) 1,1,2-Trichlorotrifluo...	2.331	101	1691	1.623	ug/l	99
11) Tert butyl alcohol	2.940	59	443	2.257	ug/l #	72
16) Acetone	2.398	43	836	1.706	ug/l #	63
20) Methylene Chloride	2.794	84	288	0.256	ug/l #	49
31) Cyclohexane	5.550	56	2191	1.340	ug/l #	4
36) 1,1-Dichloropropene	5.550	75	7241	4.456	ug/l #	50
38) Carbon Tetrachloride	5.556	117	10307	5.719	ug/l #	16
39) Methylcyclohexane	7.123	83	3094	1.609	ug/l #	1
44) Trichloroethene	7.123	130	259836	200.728	ug/l	96
51) 4-Methyl-2-Pentanone	8.647	43	874	0.534	ug/l #	1
52) Toluene	8.726	92	743	0.248	ug/l	91
60) Dibromochloromethane	9.281	129	342	0.248	ug/l #	11
64) Tetrachloroethene	9.269	164	398	0.368	ug/l #	75
76) 1,2,3-Trichloropropane	11.079	75	42422	29.226	ug/l #	37
81) trans-1,4-Dichloro-2-b...	11.079	75	42422	92.998	ug/l #	6

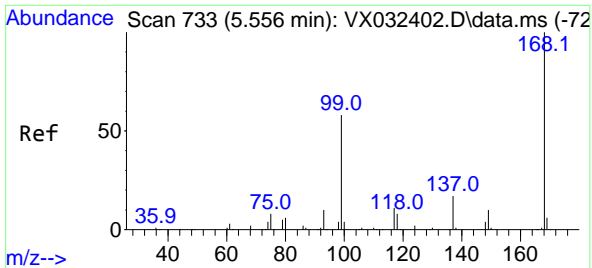
(#) = qualifier out of range (m) = manual integration (+) = signals summed

Data Path : Z:\voasrv\HPCHEM1\MSVOA\_X\Data\VX112122\  
 Data File : VX032953.D  
 Acq On : 21 Nov 2022 15:32  
 Operator : JC/MD  
 Sample : N5729-01  
 Misc : 5.0mL/MSVOA\_X/WATER  
 ALS Vial : 15 Sample Multiplier: 1

Instrument :  
 MSVOA\_X  
 ClientSampleId :  
 RE103D3-20221116

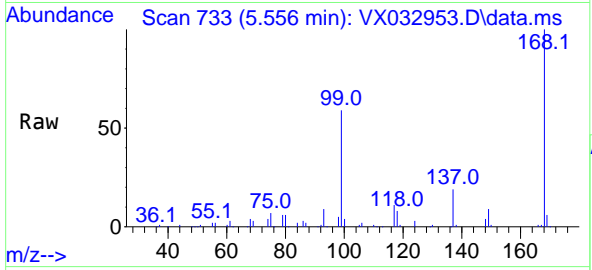
Quant Time: Nov 22 05:12:14 2022  
 Quant Method : Z:\voasrv\HPCHEM1\MSVOA\_X\Method\82X102622W.M  
 Quant Title : SW846 8260  
 QLast Update : Thu Oct 27 08:28:06 2022  
 Response via : Initial Calibration



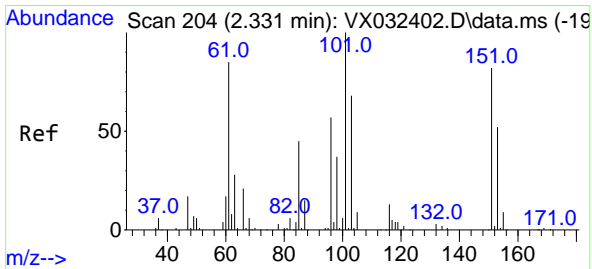
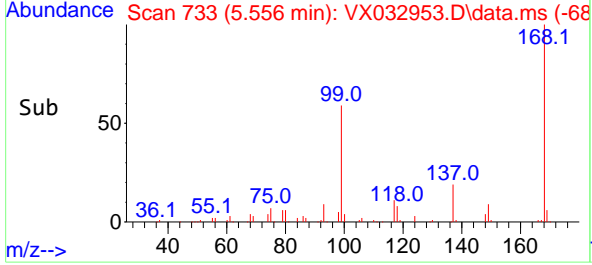
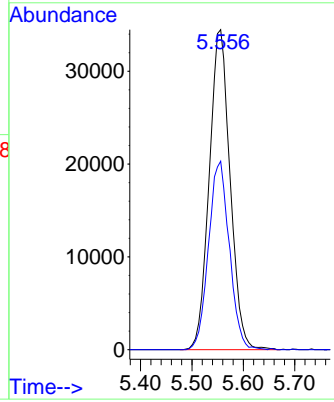


#1  
 Pentafluorobenzene  
 Concen: 50.000 ug/l  
 RT: 5.556 min Scan# 71  
 Delta R.T. -0.000 min  
 Lab File: VX032953.D  
 Acq: 21 Nov 2022 15:32

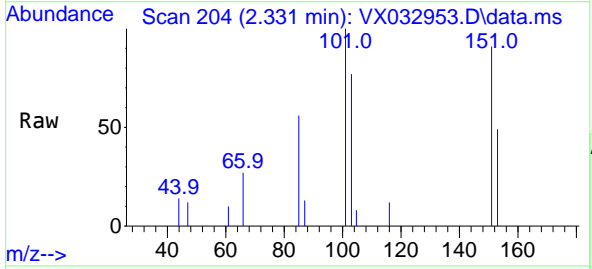
Instrument : MSVOA\_X  
 ClientSampleId : RE103D3-20221116



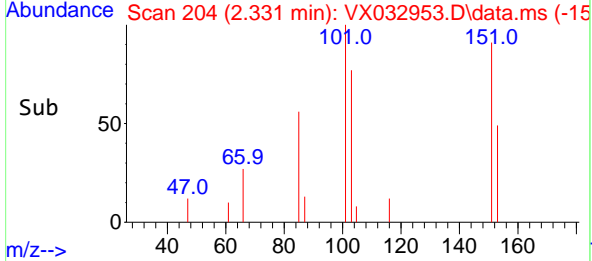
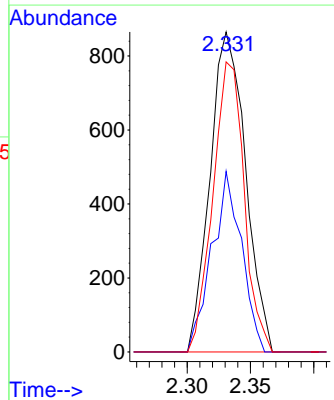
Tgt Ion:168 Resp: 97063  
 Ion Ratio Lower Upper  
 168 100  
 99 58.9 46.1 69.1

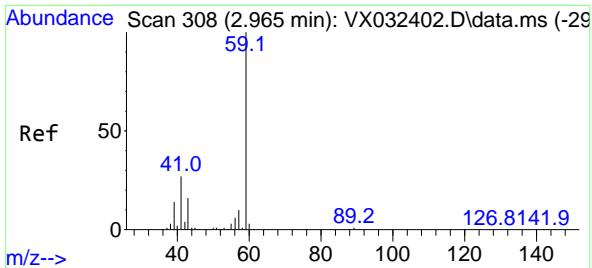


#9  
 1,1,2-Trichlorotrifluoroethane  
 Concen: 1.623 ug/l  
 RT: 2.331 min Scan# 204  
 Delta R.T. -0.000 min  
 Lab File: VX032953.D  
 Acq: 21 Nov 2022 15:32



Tgt Ion:101 Resp: 1691  
 Ion Ratio Lower Upper  
 101 100  
 85 47.1 37.0 55.4  
 151 79.6 64.4 96.6

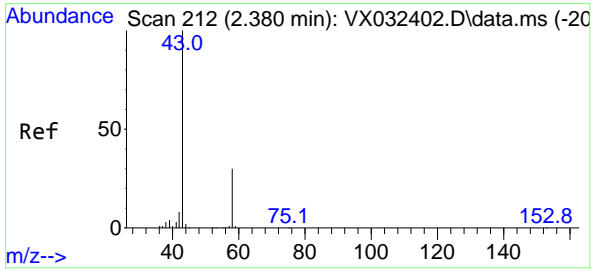
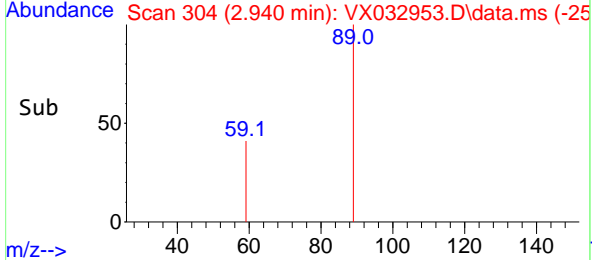
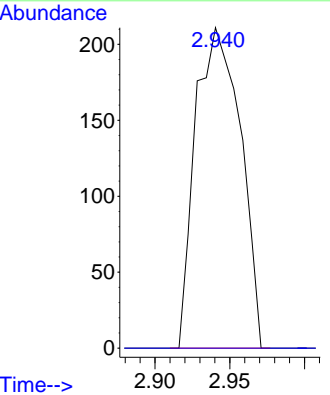
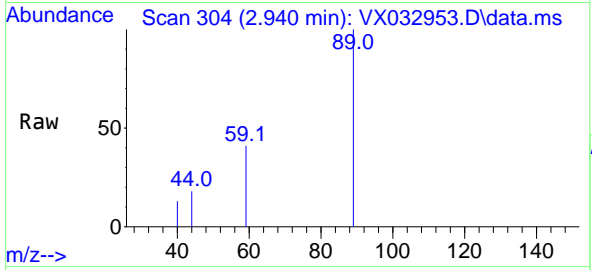




#11  
 Tert butyl alcohol  
 Concen: 2.257 ug/l  
 RT: 2.940 min Scan# 304  
 Delta R.T. -0.024 min  
 Lab File: VX032953.D  
 Acq: 21 Nov 2022 15:32

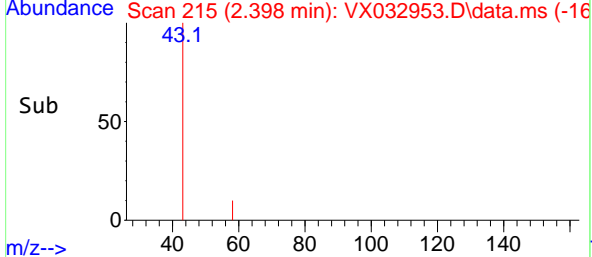
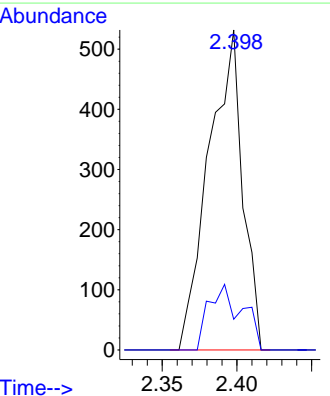
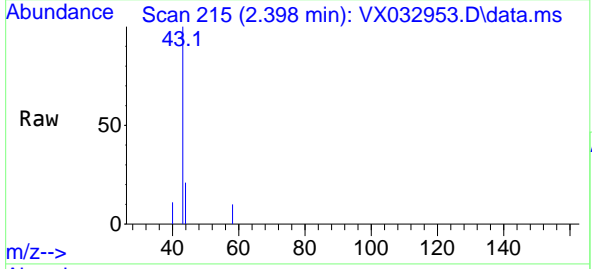
Instrument : MSVOA\_X  
 ClientSampleId : RE103D3-20221116

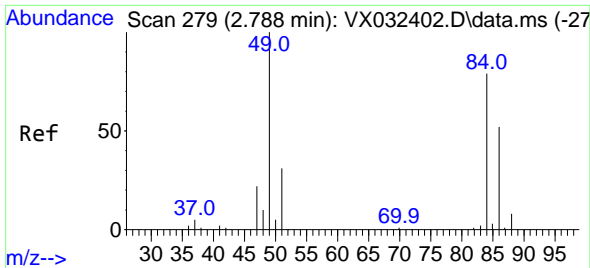
Tgt Ion: 59 Resp: 443  
 Ion Ratio Lower Upper  
 59 100  
 57 0.0 8.2 12.4#



#16  
 Acetone  
 Concen: 1.706 ug/l  
 RT: 2.398 min Scan# 215  
 Delta R.T. 0.018 min  
 Lab File: VX032953.D  
 Acq: 21 Nov 2022 15:32

Tgt Ion: 43 Resp: 836  
 Ion Ratio Lower Upper  
 43 100  
 58 9.6 23.8 35.8#



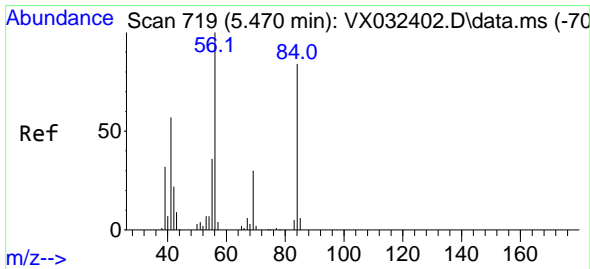
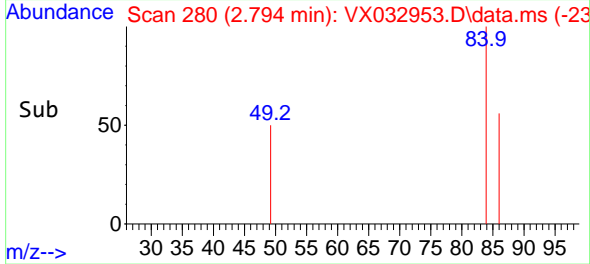
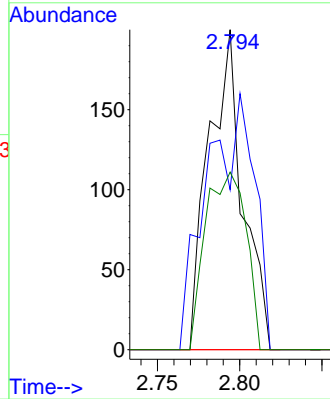
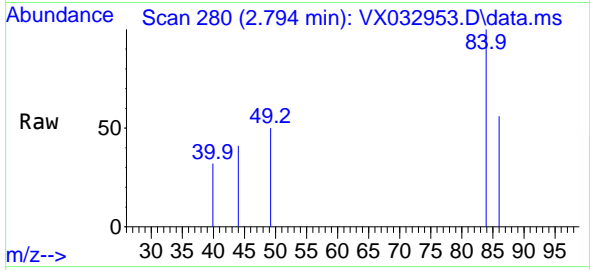


#20  
 Methylene Chloride  
 Concen: 0.256 ug/l  
 RT: 2.794 min Scan# 21  
 Delta R.T. 0.006 min  
 Lab File: VX032953.D  
 Acq: 21 Nov 2022 15:32

Instrument :  
 MSVOA\_X  
 ClientSampleId :  
 RE103D3-20221116

Tgt Ion: 84 Resp: 288

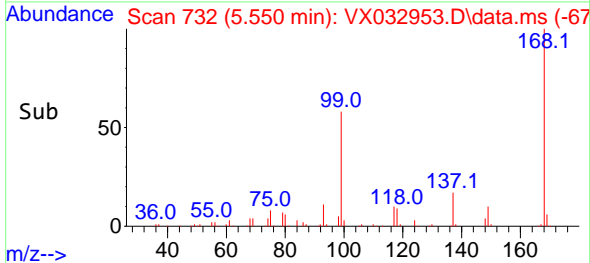
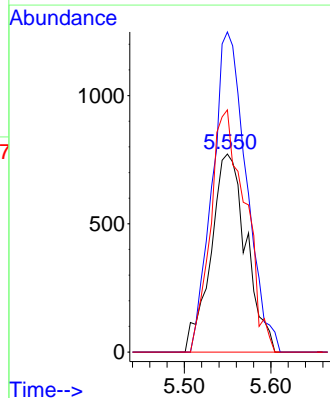
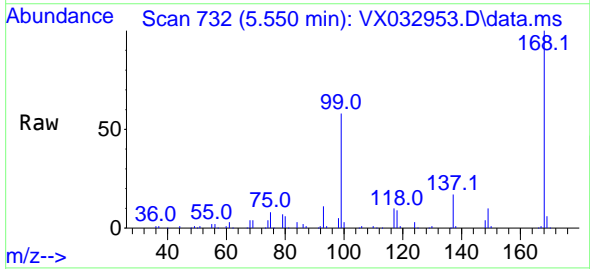
Ion	Ratio	Lower	Upper
84	100		
49	50.0	101.0	151.6#
51	0.0	31.1	46.7#
86	55.5	52.3	78.5

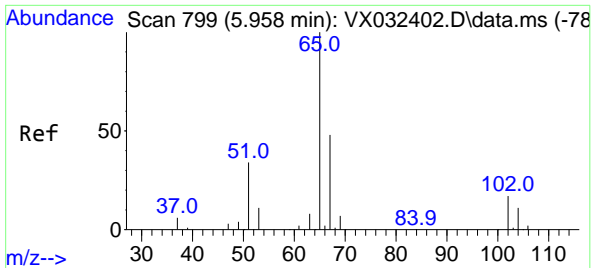


#31  
 Cyclohexane  
 Concen: 1.340 ug/l  
 RT: 5.550 min Scan# 732  
 Delta R.T. 0.079 min  
 Lab File: VX032953.D  
 Acq: 21 Nov 2022 15:32

Tgt Ion: 56 Resp: 2191

Ion	Ratio	Lower	Upper
56	100		
69	161.7	24.1	36.1#
84	122.3	66.9	100.3#

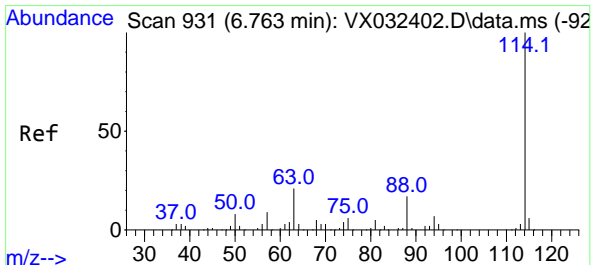
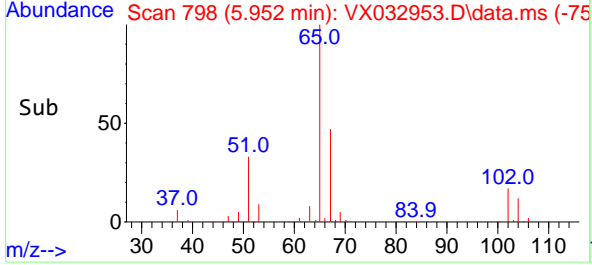
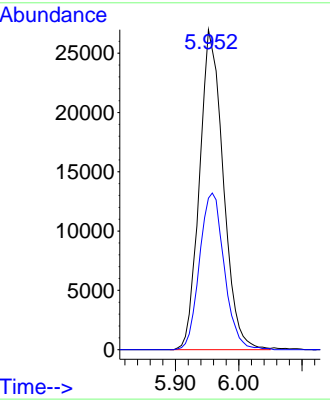
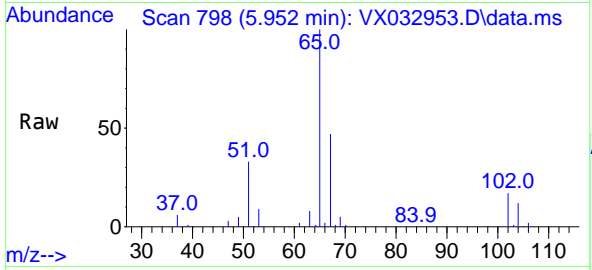




#33  
 1,2-Dichloroethane-d4  
 Concen: 52.126 ug/l  
 RT: 5.952 min Scan# 799  
 Delta R.T. -0.006 min  
 Lab File: VX032953.D  
 Acq: 21 Nov 2022 15:32

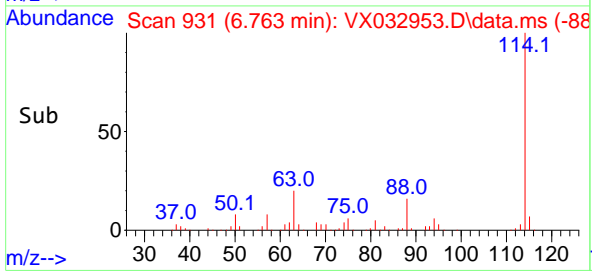
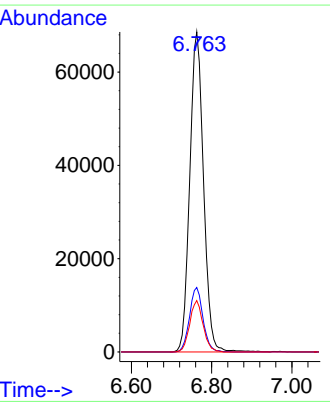
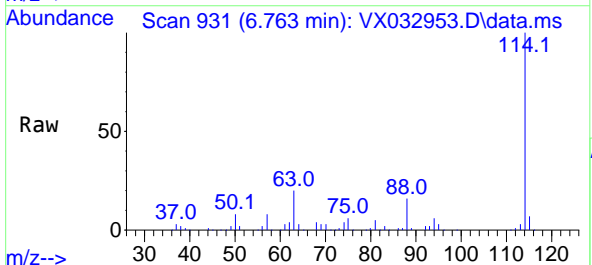
Instrument : MSVOA\_X  
 ClientSampleId : RE103D3-20221116

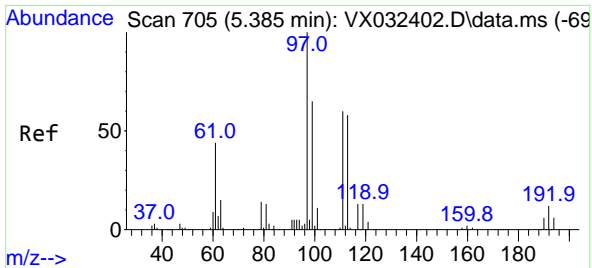
Tgt Ion: 65 Resp: 70301  
 Ion Ratio Lower Upper  
 65 100  
 67 51.1 0.0 101.8



#34  
 1,4-Difluorobenzene  
 Concen: 50.000 ug/l  
 RT: 6.763 min Scan# 931  
 Delta R.T. -0.000 min  
 Lab File: VX032953.D  
 Acq: 21 Nov 2022 15:32

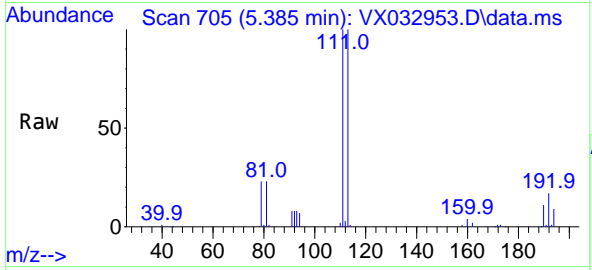
Tgt Ion: 114 Resp: 163588  
 Ion Ratio Lower Upper  
 114 100  
 63 20.1 0.0 41.6  
 88 16.0 0.0 33.4





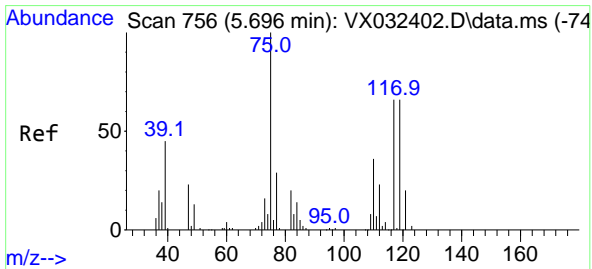
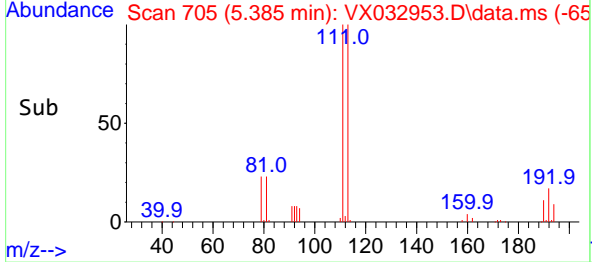
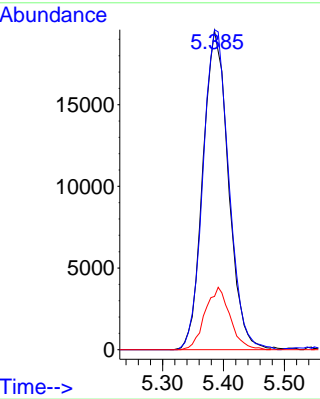
#35  
 Dibromofluoromethane  
 Concen: 48.727 ug/l  
 RT: 5.385 min Scan# 705  
 Delta R.T. -0.000 min  
 Lab File: VX032953.D  
 Acq: 21 Nov 2022 15:32

Instrument : MSVOA\_X  
 ClientSampleId : RE103D3-20221116

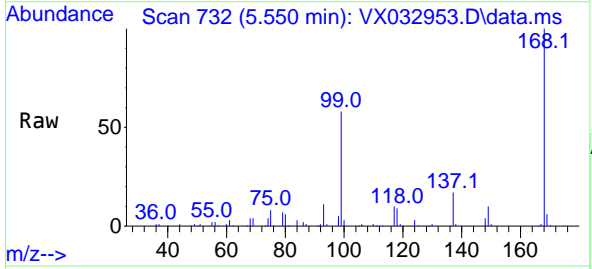


Tgt Ion:113 Resp: 56859

Ion	Ratio	Lower	Upper
113	100		
111	101.7	82.4	123.6
192	19.1	15.4	23.2

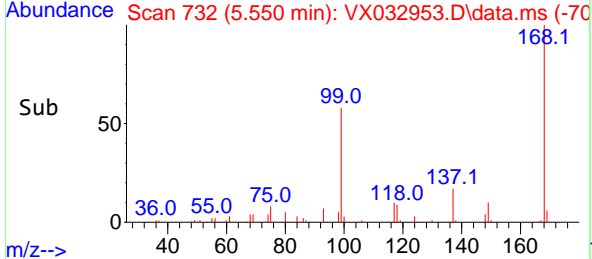
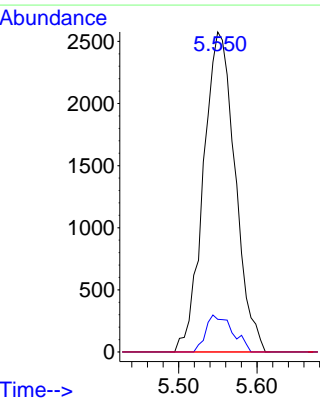


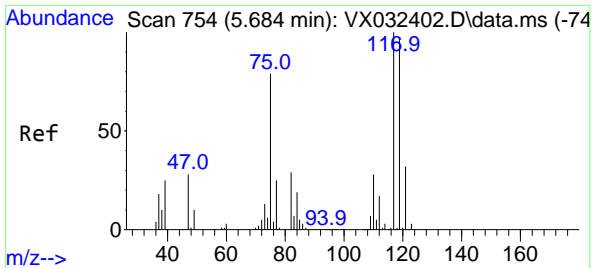
#36  
 1,1-Dichloropropene  
 Concen: 4.456 ug/l  
 RT: 5.550 min Scan# 732  
 Delta R.T. -0.146 min  
 Lab File: VX032953.D  
 Acq: 21 Nov 2022 15:32



Tgt Ion: 75 Resp: 7241

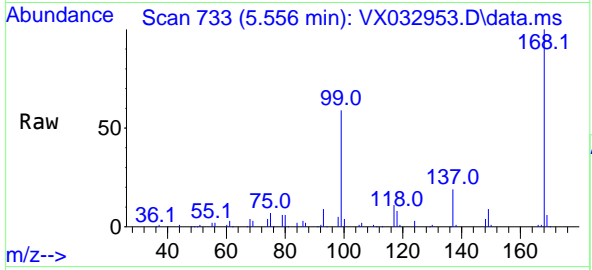
Ion	Ratio	Lower	Upper
75	100		
110	9.7	18.4	55.2#
77	0.0	24.5	36.7#



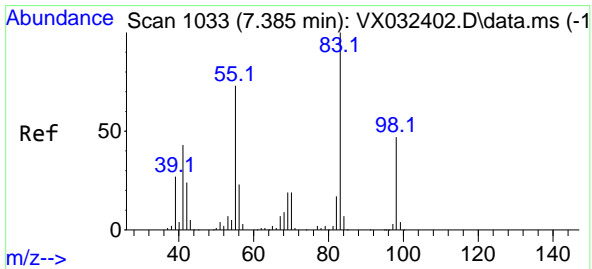
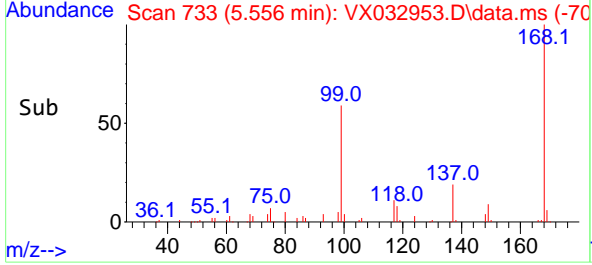
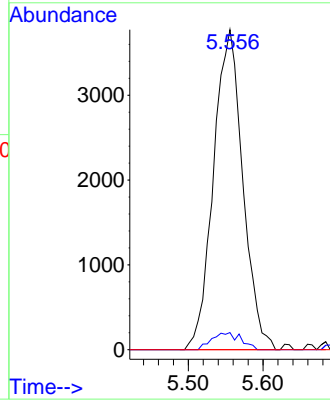


#38  
 Carbon Tetrachloride  
 Concen: 5.719 ug/l  
 RT: 5.556 min Scan# 711  
 Delta R.T. -0.128 min  
 Lab File: VX032953.D  
 Acq: 21 Nov 2022 15:32

Instrument : MSVOA\_X  
 ClientSampleId : RE103D3-20221116

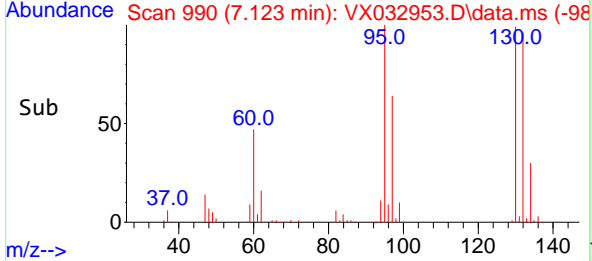
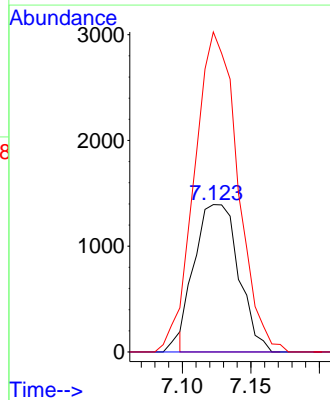
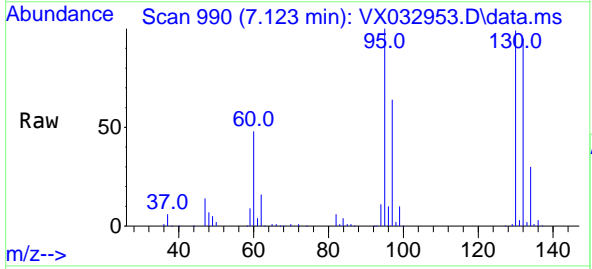


Tgt Ion:117 Resp: 10307  
 Ion Ratio Lower Upper  
 117 100  
 119 5.4 77.2 115.8#  
 121 0.0 25.8 38.6#

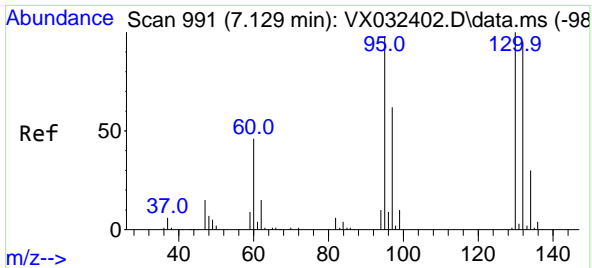


#39  
 Methylcyclohexane  
 Concen: 1.609 ug/l  
 RT: 7.123 min Scan# 990  
 Delta R.T. -0.262 min  
 Lab File: VX032953.D  
 Acq: 21 Nov 2022 15:32

Tgt Ion: 83 Resp: 3094  
 Ion Ratio Lower Upper  
 83 100  
 55 0.0 58.4 87.6#  
 98 212.1 37.2 55.8#



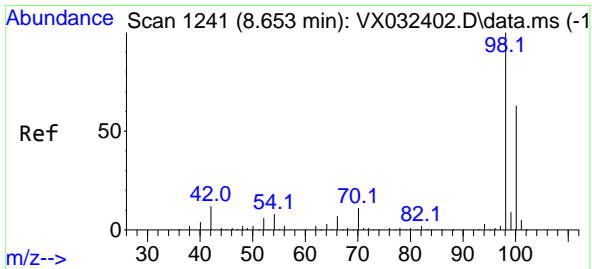
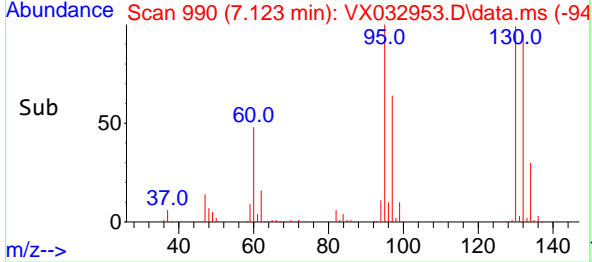
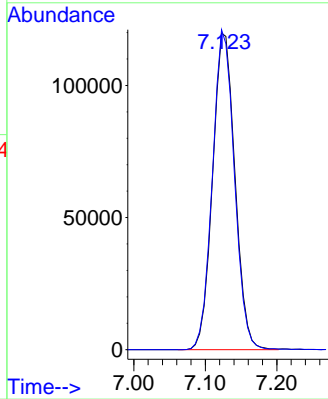
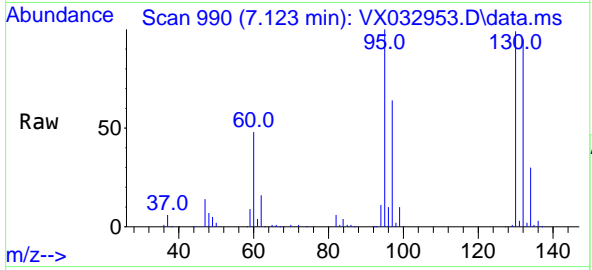




#44  
 Trichloroethene  
 Concen: 200.728 ug/l  
 RT: 7.123 min Scan# 94  
 Delta R.T. -0.006 min  
 Lab File: VX032953.D  
 Acq: 21 Nov 2022 15:32

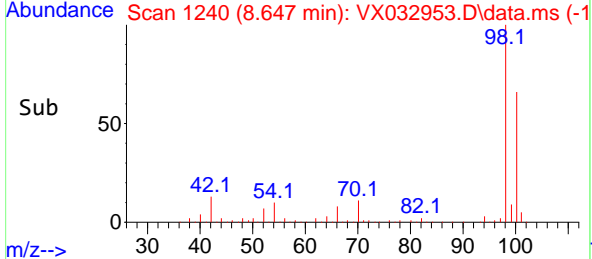
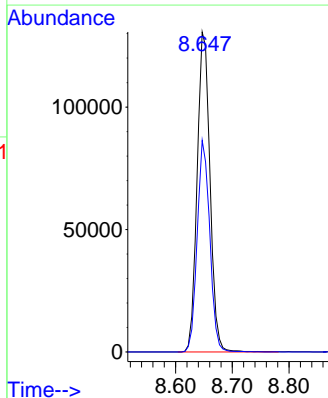
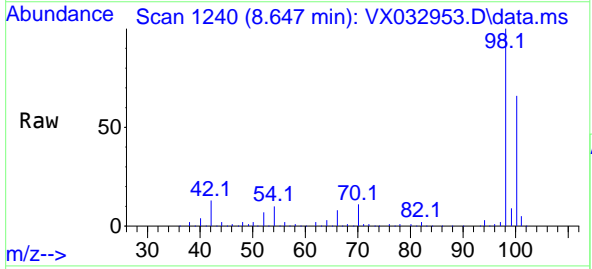
Instrument : MSVOA\_X  
 ClientSampleId : RE103D3-20221116

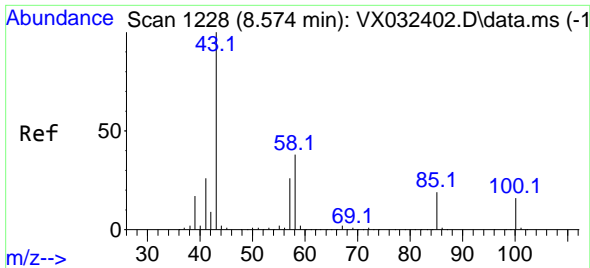
Tgt Ion:130 Resp: 259836  
 Ion Ratio Lower Upper  
 130 100  
 95 101.1 0.0 195.2



#50  
 Toluene-d8  
 Concen: 50.668 ug/l  
 RT: 8.647 min Scan# 1240  
 Delta R.T. -0.006 min  
 Lab File: VX032953.D  
 Acq: 21 Nov 2022 15:32

Tgt Ion: 98 Resp: 205588  
 Ion Ratio Lower Upper  
 98 100  
 100 64.7 50.9 76.3

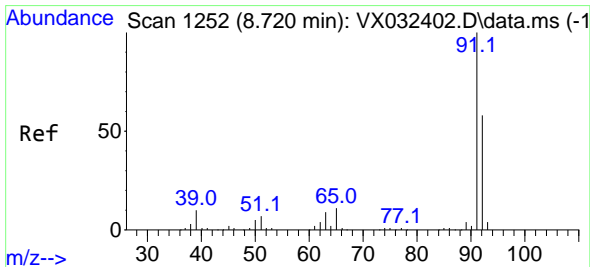
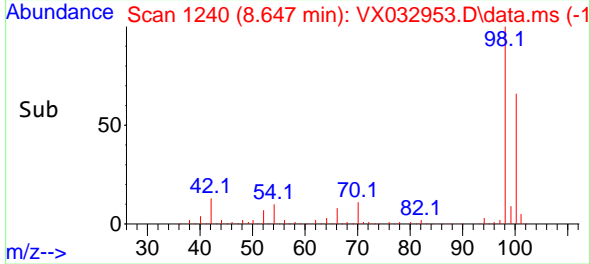
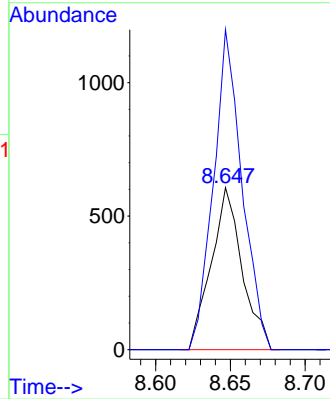
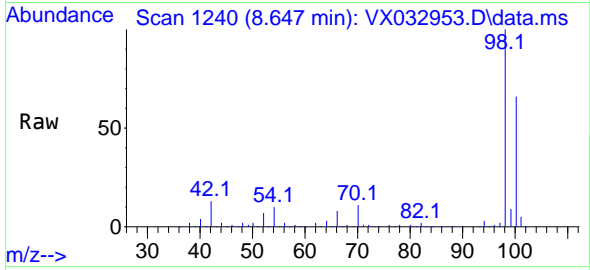




#51  
 4-Methyl-2-Pentanone  
 Concen: 0.534 ug/l  
 RT: 8.647 min Scan# 11  
 Delta R.T. 0.073 min  
 Lab File: VX032953.D  
 Acq: 21 Nov 2022 15:32

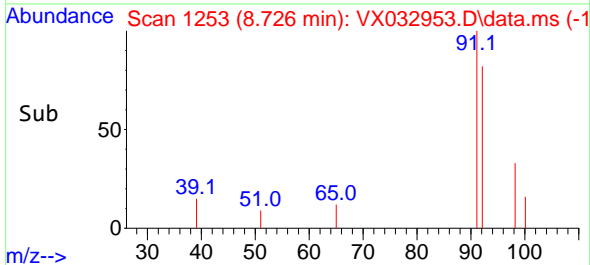
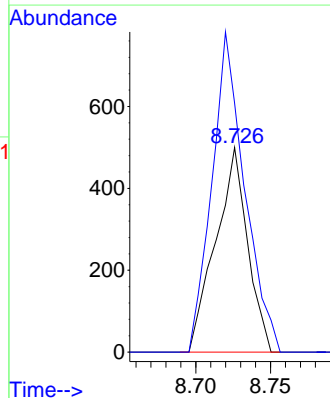
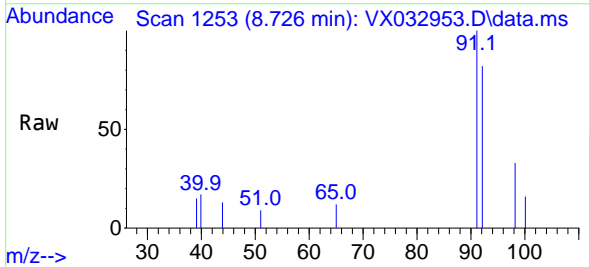
Instrument : MSVOA\_X  
 ClientSampleId : RE103D3-20221116

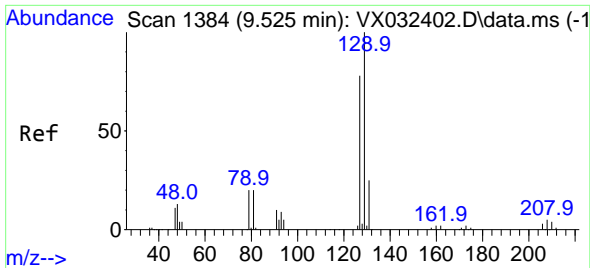
Tgt Ion: 43 Resp: 874  
 Ion Ratio Lower Upper  
 43 100  
 58 182.0 30.9 46.3#



#52  
 Toluene  
 Concen: 0.248 ug/l  
 RT: 8.726 min Scan# 1253  
 Delta R.T. 0.006 min  
 Lab File: VX032953.D  
 Acq: 21 Nov 2022 15:32

Tgt Ion: 92 Resp: 743  
 Ion Ratio Lower Upper  
 92 100  
 91 160.0 138.3 207.5

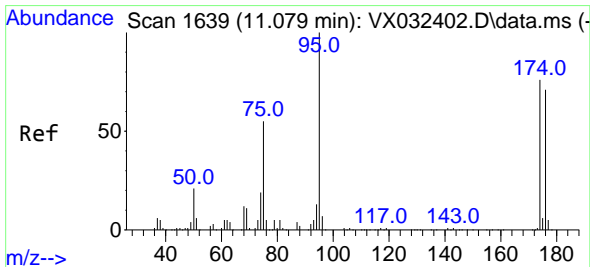
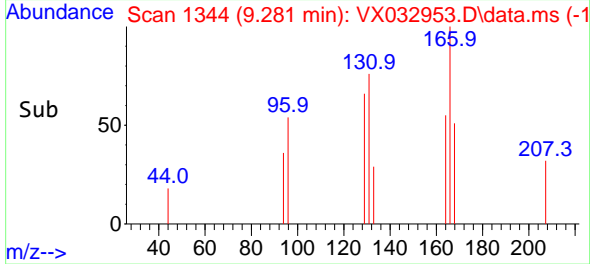
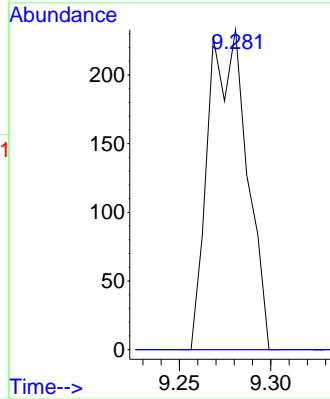
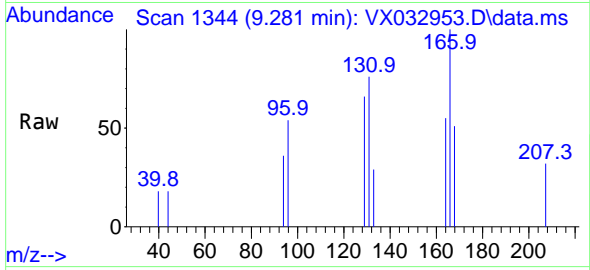




#60  
 Dibromochloromethane  
 Concen: 0.248 ug/l  
 RT: 9.281 min Scan# 111  
 Delta R.T. -0.244 min  
 Lab File: VX032953.D  
 Acq: 21 Nov 2022 15:32

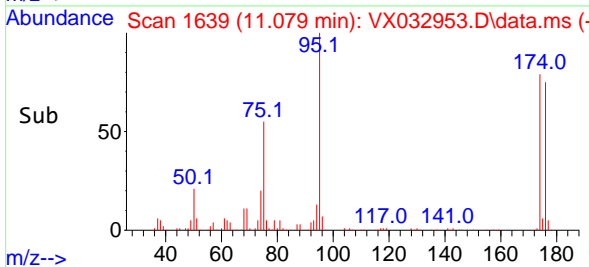
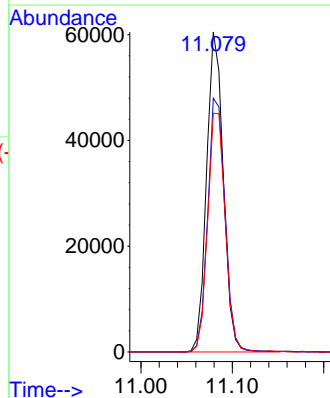
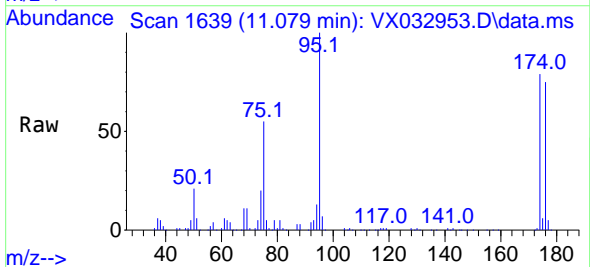
Instrument : MSVOA\_X  
 ClientSampleId : RE103D3-20221116

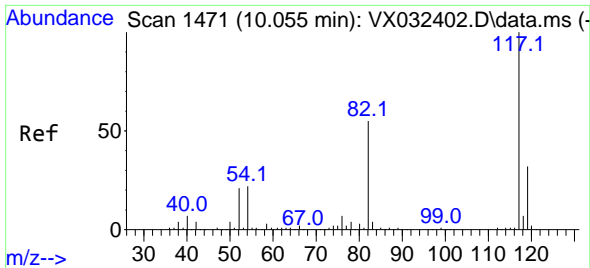
Tgt Ion:129 Resp: 342  
 Ion Ratio Lower Upper  
 129 100  
 127 0.0 38.6 115.8#



#62  
 4-Bromofluorobenzene  
 Concen: 48.333 ug/l  
 RT: 11.079 min Scan# 1639  
 Delta R.T. -0.000 min  
 Lab File: VX032953.D  
 Acq: 21 Nov 2022 15:32

Tgt Ion: 95 Resp: 76607  
 Ion Ratio Lower Upper  
 95 100  
 174 82.6 0.0 164.0  
 176 78.5 0.0 154.4



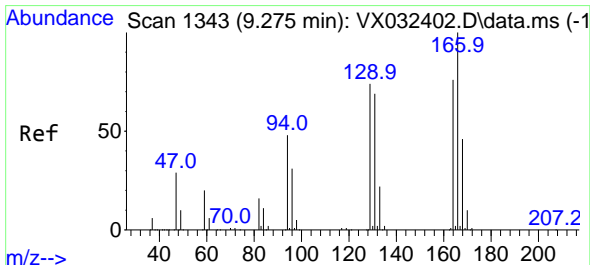
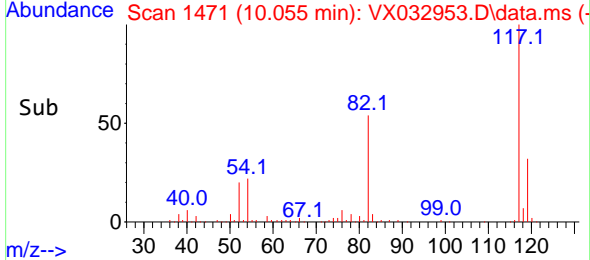
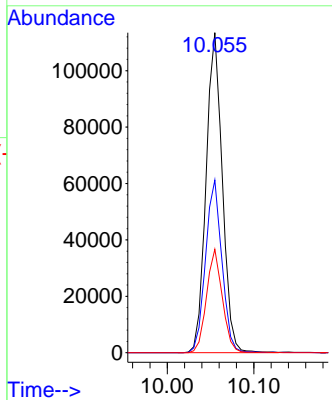
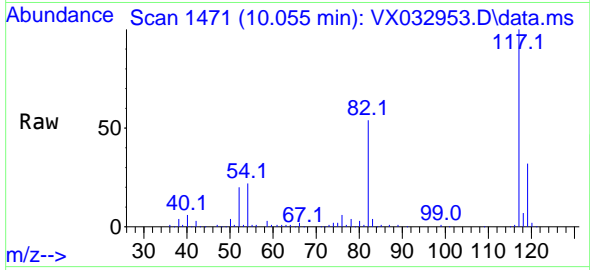


#63  
 Chlorobenzene-d5  
 Concen: 50.000 ug/l  
 RT: 10.055 min Scan# 1471  
 Delta R.T. -0.000 min  
 Lab File: VX032953.D  
 Acq: 21 Nov 2022 15:32

Instrument : MSVOA\_X  
 ClientSampleId : RE103D3-20221116

Tgt Ion:117 Resp: 147942

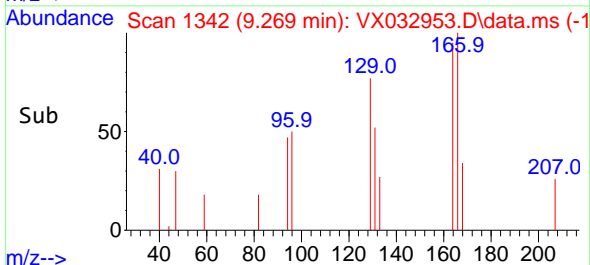
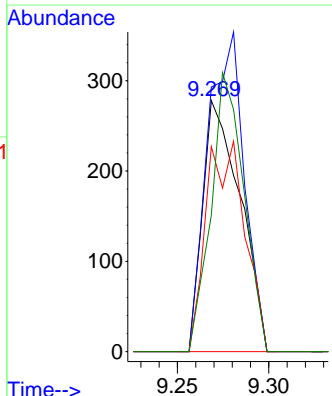
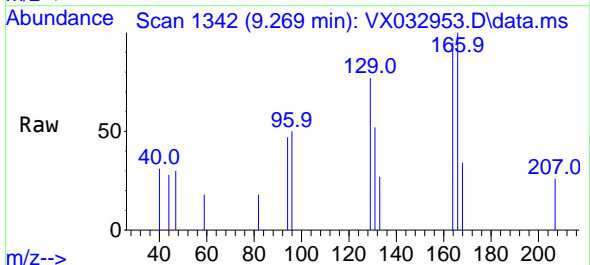
Ion	Ratio	Lower	Upper
117	100		
82	54.0	44.3	66.5
119	32.3	25.7	38.5

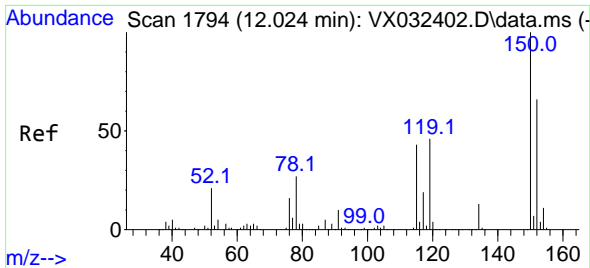


#64  
 Tetrachloroethene  
 Concen: 0.368 ug/l  
 RT: 9.269 min Scan# 1342  
 Delta R.T. -0.006 min  
 Lab File: VX032953.D  
 Acq: 21 Nov 2022 15:32

Tgt Ion:164 Resp: 398

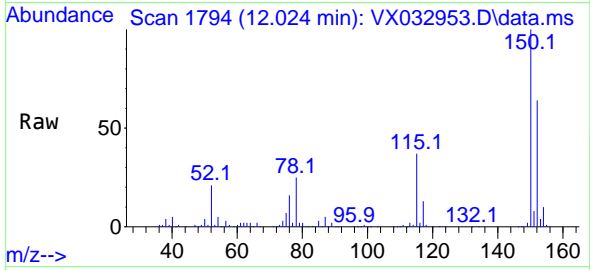
Ion	Ratio	Lower	Upper
164	100		
166	105.4	105.4	158.2#
129	81.7	78.2	117.2
131	54.3	72.5	108.7#



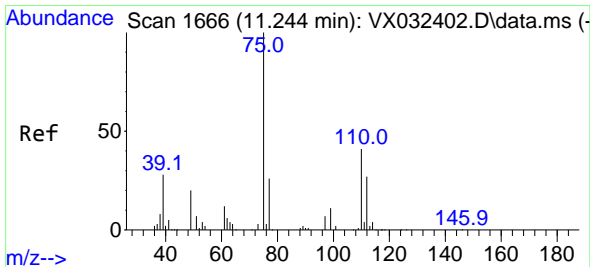
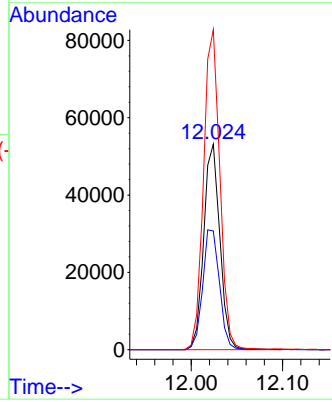
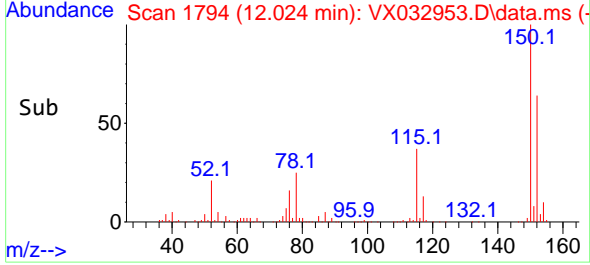


#72  
 1,4-Dichlorobenzene-d4  
 Concen: 50.000 ug/l  
 RT: 12.024 min Scan# 11  
 Delta R.T. -0.000 min  
 Lab File: VX032953.D  
 Acq: 21 Nov 2022 15:32

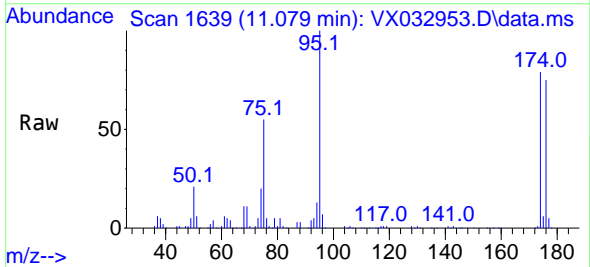
Instrument :  
 MSVOA\_X  
 ClientSampleId :  
 RE103D3-20221116



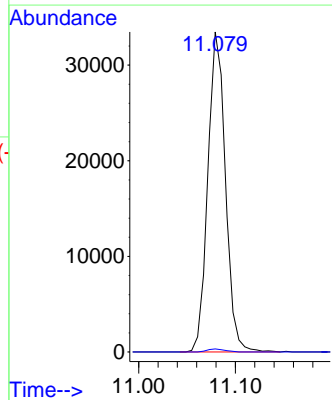
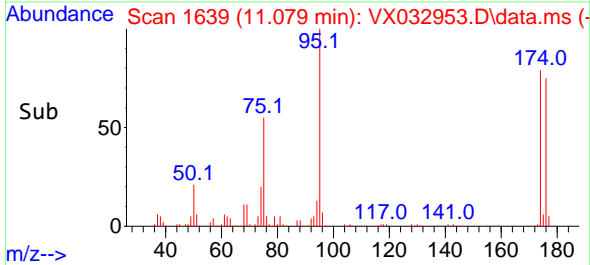
Tgt Ion:152 Resp: 65244  
 Ion Ratio Lower Upper  
 152 100  
 115 60.7 44.0 132.0  
 150 156.7 0.0 351.8

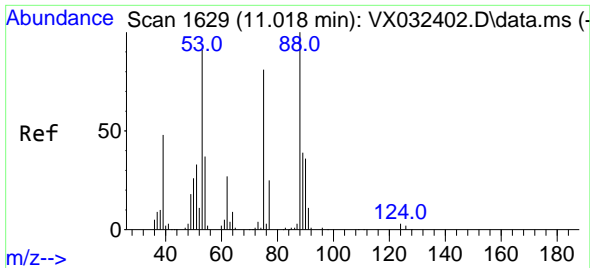


#76  
 1,2,3-Trichloropropane  
 Concen: 29.226 ug/l  
 RT: 11.079 min Scan# 1639  
 Delta R.T. -0.165 min  
 Lab File: VX032953.D  
 Acq: 21 Nov 2022 15:32



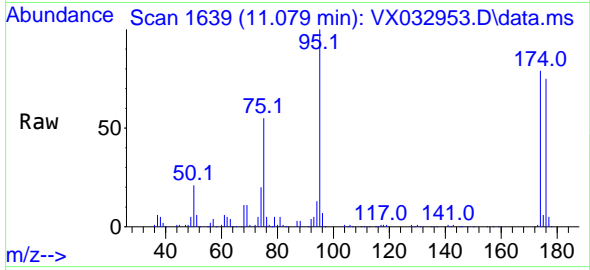
Tgt Ion: 75 Resp: 42422  
 Ion Ratio Lower Upper  
 75 100  
 77 1.0 20.0 60.0#





#81  
 trans-1,4-Dichloro-2-butene  
 Concen: 92.998 ug/l  
 RT: 11.079 min Scan# 10  
 Delta R.T. 0.061 min  
 Lab File: VX032953.D  
 Acq: 21 Nov 2022 15:32

Instrument :  
 MSVOA\_X  
 ClientSampleId :  
 RE103D3-20221116



Tgt Ion: 75 Resp: 42422

Ion	Ratio	Lower	Upper
75	100		
53	0.0	86.9	130.3#
89	0.0	38.3	57.5#

