

Data Path : Z:\voasrv\HPCHEM1\MSVOA_X\Data\VX112122\
 Data File : VX032941.D
 Acq On : 21 Nov 2022 10:51
 Operator : JC/MD
 Sample : VX1121MBL01
 Misc : 5.00g/10mL/100uL/5.00mL/MSVOA_X/MEOH
 ALS Vial : 3 Sample Multiplier: 1

Instrument :
 MSVOA_X
 ClientSampleId :
 VX1121MBL01

Integration Parameters: RTEINT.P

Integrator: RTE
 Smoothing : ON Filtering: 5
 Sampling : 1 Min Area: 3 % of largest Peak
 Start Thrs: 0.2 Max Peaks: 100
 Stop Thrs : 0 Peak Location: TOP

If leading or trailing edge < 100 prefer < Baseline drop else tangent >
 Peak separation: 5

Method : Z:\voasrv\HPCHEM1\MSVOA_X\Method\82X102622W.M
 Title : SW846 8260

Signal : TIC: VX032941.D\data.ms

peak #	R.T. min	first scan	max scan	last scan	PK TY	peak height	corr. area	corr. % max.	% of total
1	5.379	693	704	719	rBV	73627	216868	35.39%	6.709%
2	5.550	719	732	745	rVV	116003	330076	53.86%	10.212%
3	5.952	788	798	810	rBV	78765	209653	34.21%	6.486%
4	6.757	921	930	948	rBV	184126	429705	70.11%	13.294%
5	8.647	1233	1240	1261	rBV	399389	612881	100.00%	18.961%
6	10.055	1465	1471	1481	rBV	368807	506679	82.67%	15.676%
7	11.079	1634	1639	1656	rVB	367469	449971	73.42%	13.921%
8	12.024	1788	1794	1804	rBV	378336	476463	77.74%	14.741%

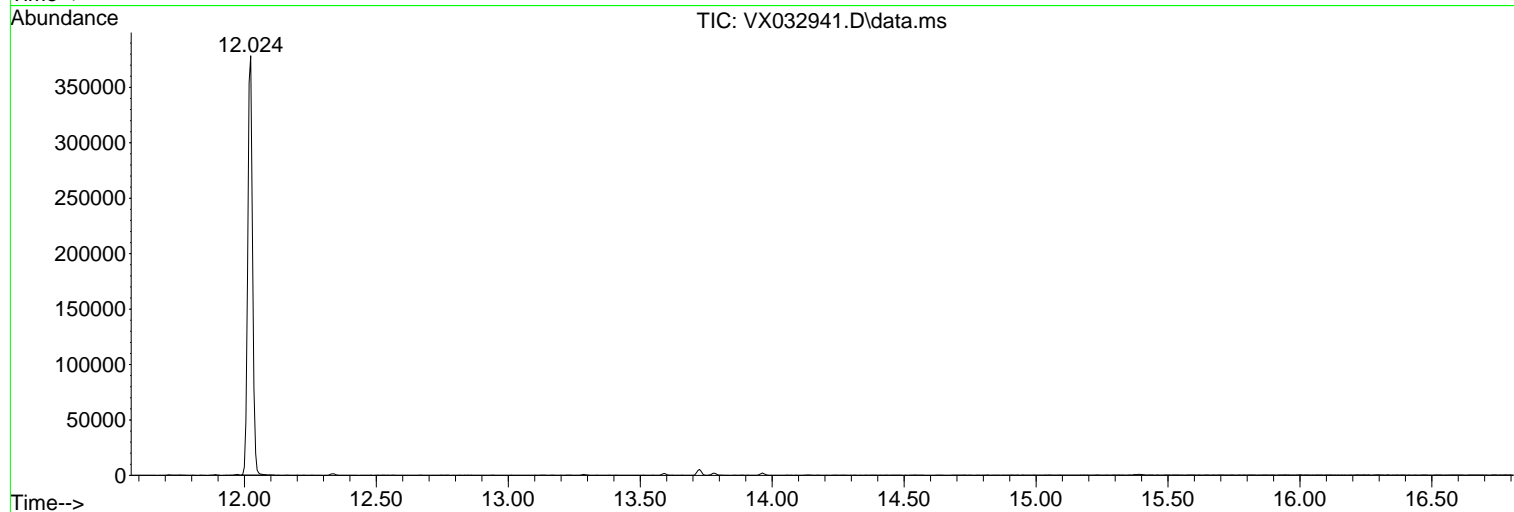
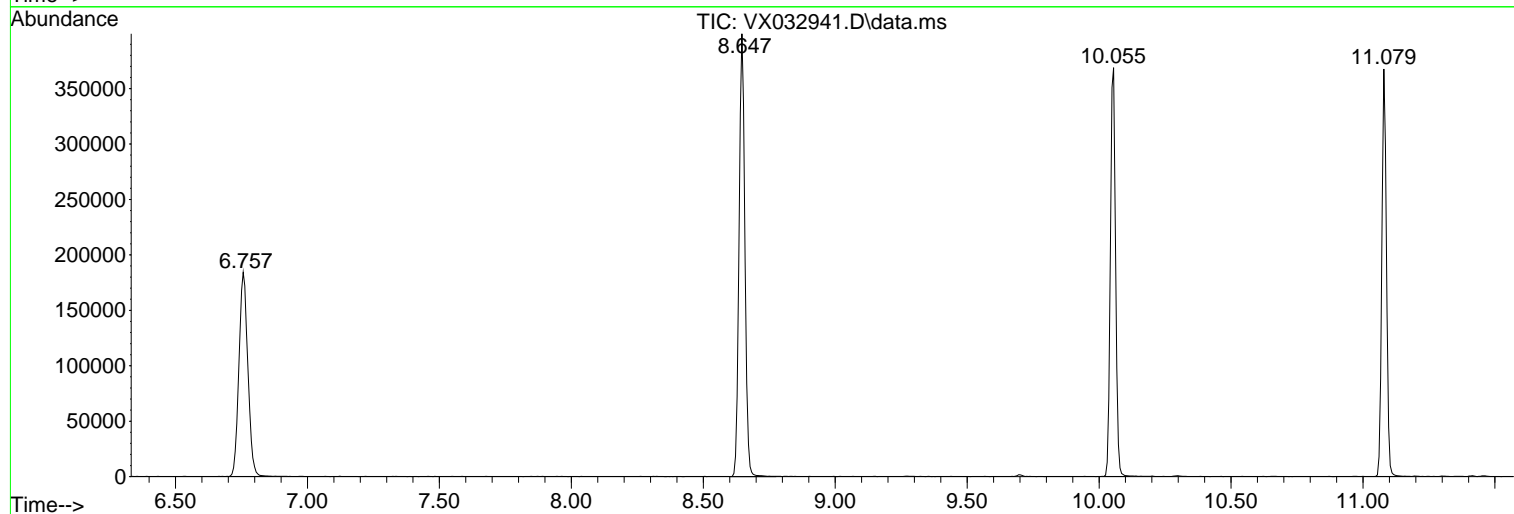
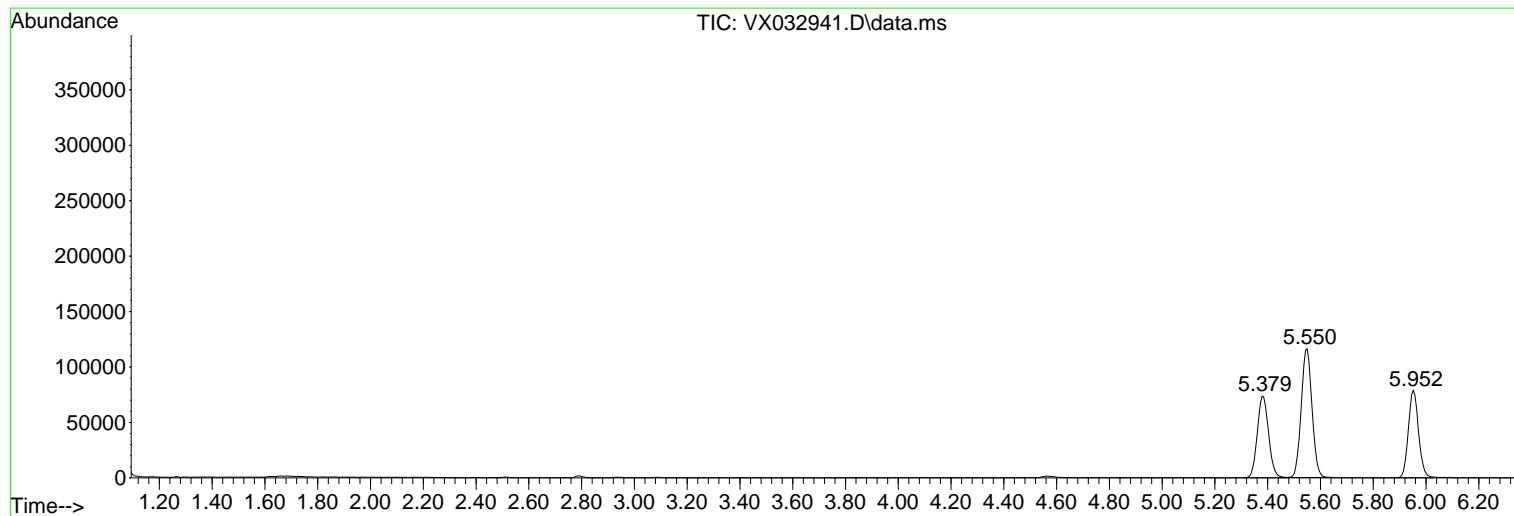
Sum of corrected areas: 3232296

Data Path : Z:\voasrv\HPCHEM1\MSVOA_X\Data\VX112122\
Data File : VX032941.D
Acq On : 21 Nov 2022 10:51
Operator : JC/MD
Sample : VX1121MBL01
Misc : 5.00g/10mL/100uL/5.00mL/MSVOA_X/MEOH
ALS Vial : 3 Sample Multiplier: 1

Instrument :
MSVOA_X
ClientSampleId :
VX1121MBL01

Quant Method : Z:\voasrv\HPCHEM1\MSVOA_X\Method\82X102622W.M
Quant Title : SW846 8260

TIC Library : C:\Database\NIST20.L
TIC Integration Parameters: LSCINT.P



Data Path : Z:\voasrv\HPCHEM1\MSVOA_X\Data\VX112122\
Data File : VX032941.D
Acq On : 21 Nov 2022 10:51
Operator : JC/MD
Sample : VX1121MBL01
Misc : 5.00g/10mL/100uL/5.00mL/MSVOA_X/MEOH
ALS Vial : 3 Sample Multiplier: 1

Instrument :
MSVOA_X
ClientSampleId :
VX1121MBL01

Quant Method : Z:\voasrv\HPCHEM1\MSVOA_X\Method\82X102622W.M
Quant Title : SW846 8260

TIC Library : C:\Database\NIST20.L
TIC Integration Parameters: LSCINT.P

No Library Search Compounds Detected

Data Path : Z:\voasrv\HPCHEM1\MSVOA_X\Data\VX112122\
Data File : VX032941.D
Acq On : 21 Nov 2022 10:51
Operator : JC/MD
Sample : VX1121MBL01
Misc : 5.00g/10mL/100uL/5.00mL/MSVOA_X/MEOH
ALS Vial : 3 Sample Multiplier: 1

Instrument :
MSVOA_X
ClientSampleId :
VX1121MBL01

Quant Method : Z:\voasrv\HPCHEM1\MSVOA_X\Method\82X102622W.M
Quant Title : SW846 8260

TIC Library : C:\Database\NIST0.L
TIC Integration Parameters: LSCINT.P

TIC Top Hit name	RT	EstConc	Units	Response	--Internal Standard--			
					#	RT	Resp	Conc
