

Data Path : Z:\voasrv\HPCHEM1\MSVOA_X\Data\VX112122\
Data File : VX032942.D
Acq On : 21 Nov 2022 11:14
Operator : JC/MD
Sample : VX1121WBL01
Misc : 5.0mL/MSVOA_X/WATER
ALS Vial : 4 Sample Multiplier: 1

Instrument :
MSVOA_X
ClientSampleId :
VX1121WBL01

Integration Parameters: RTEINT.P

Integrator: RTE

Smoothing : ON

Sampling : 1

Start Thrs : 0.2

Stop Thrs : 0

Filtering: 5

Min Area: 3 % of largest Peak

Max Peaks: 100

Peak Location: TOP

If leading or trailing edge < 100 prefer < Baseline drop else tangent >

Peak separation: 5

Method : Z:\voasrv\HPCHEM1\MSVOA_X\Method\82X102622W.M

Title : SW846 8260

Signal : TIC: VX032942.D\data.ms

peak #	R.T. min	first scan	max scan	last scan	PK TY	peak height	corr. area	corr. % max.	% of total
1	5.385	694	705	721	rBV	75541	223183	35.20%	6.637%
2	5.549	721	732	747	rVB	121029	341983	53.94%	10.169%
3	5.952	788	798	812	rBV	80558	217943	34.38%	6.481%
4	6.757	921	930	942	rBV	185402	445717	70.30%	13.254%
5	8.646	1233	1240	1254	rBV	409948	634012	100.00%	18.853%
6	10.055	1465	1471	1482	rBV	399498	532570	84.00%	15.837%
7	11.079	1634	1639	1653	rBV	376631	465837	73.47%	13.852%
8	12.024	1788	1794	1804	rBV	392401	501674	79.13%	14.918%

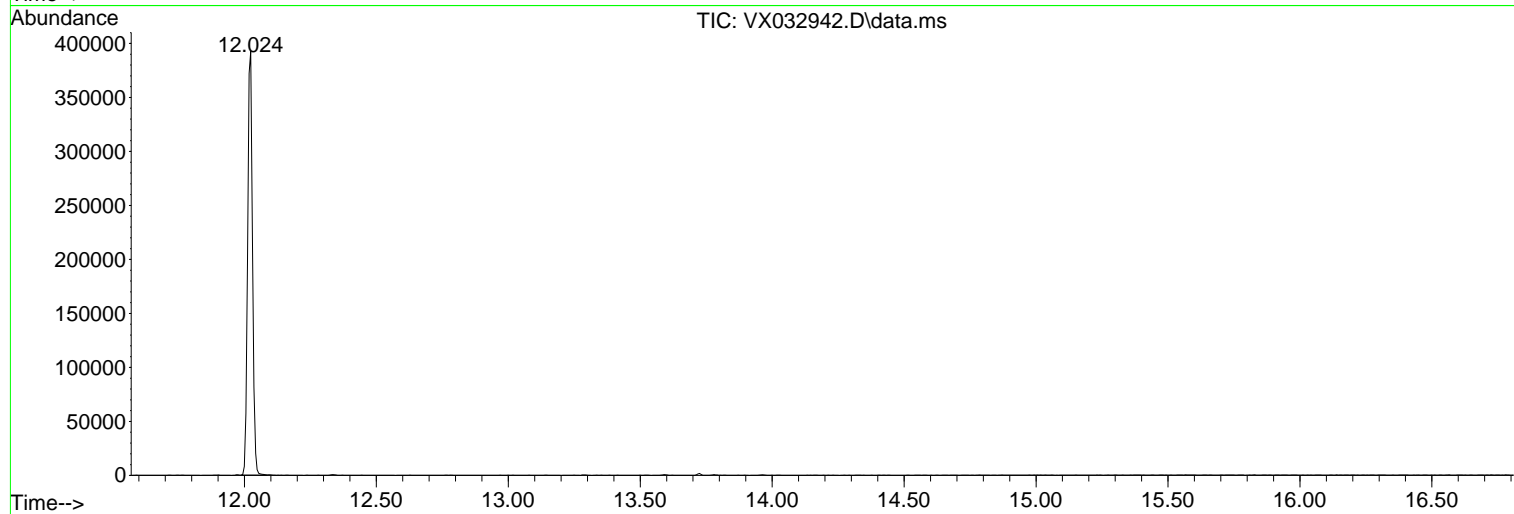
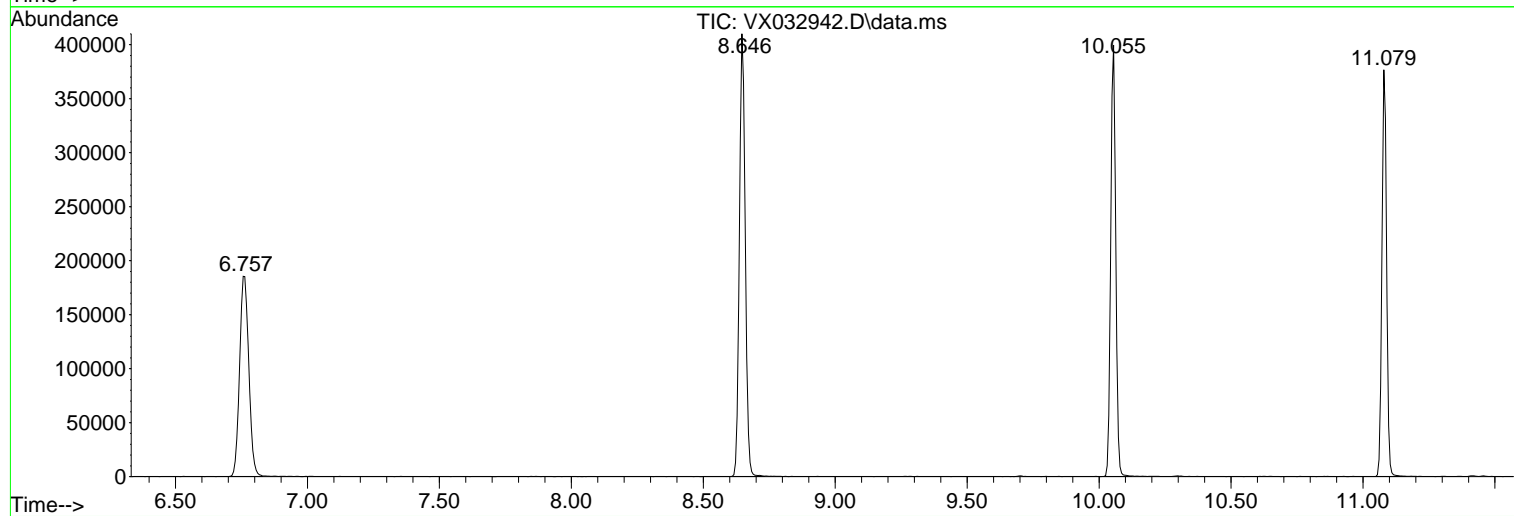
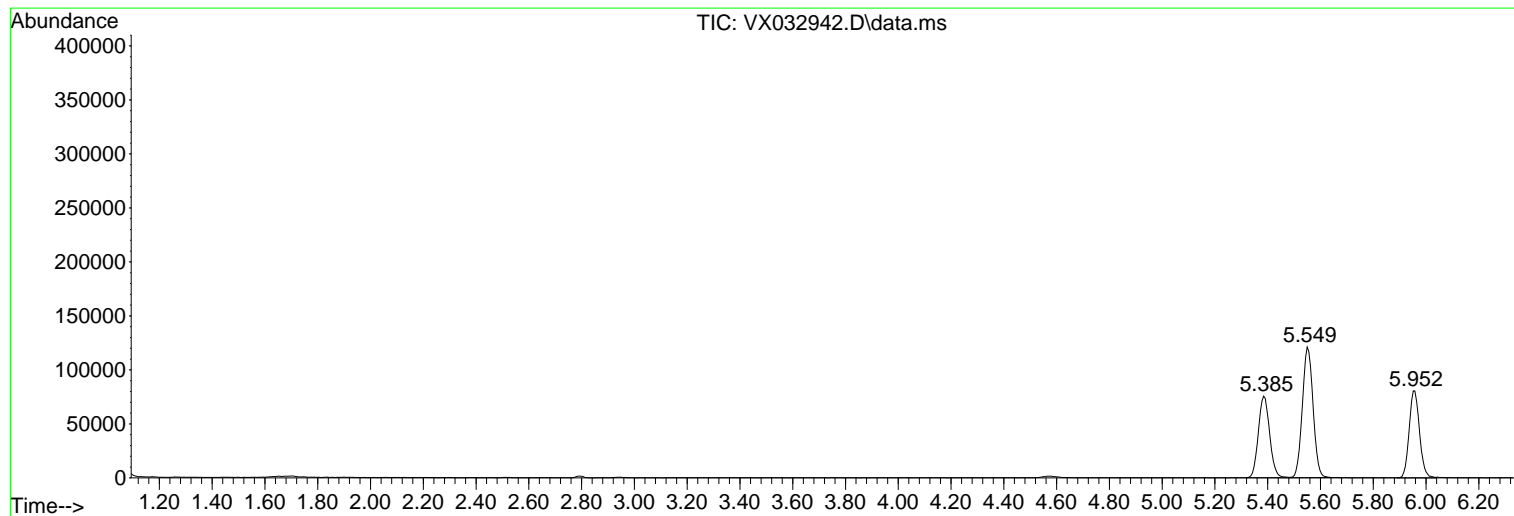
Sum of corrected areas: 3362919

Data Path : Z:\voasrv\HPCHEM1\MSVOA_X\Data\VX112122\
Data File : VX032942.D
Acq On : 21 Nov 2022 11:14
Operator : JC/MD
Sample : VX1121WBL01
Misc : 5.0mL/MSVOA_X/WATER
ALS Vial : 4 Sample Multiplier: 1

Instrument :
MSVOA_X
ClientSampleId :
VX1121WBL01

Quant Method : Z:\voasrv\HPCHEM1\MSVOA_X\Method\82X102622W.M
Quant Title : SW846 8260

TIC Library : C:\Database\NIST20.L
TIC Integration Parameters: LSCINT.P



Library Search Compound Report

Data Path : Z:\voasrv\HPCHEM1\MSVOA_X\Data\VX112122\
Data File : VX032942.D
Acq On : 21 Nov 2022 11:14
Operator : JC/MD
Sample : VX1121WBL01
Misc : 5.0mL/MSVOA_X/WATER
ALS Vial : 4 Sample Multiplier: 1

Instrument :
MSVOA_X
ClientSampleId :
VX1121WBL01

Quant Method : Z:\voasrv\HPCHEM1\MSVOA_X\Method\82X102622W.M
Quant Title : SW846 8260

TIC Library : C:\Database\NIST20.L
TIC Integration Parameters: LSCINT.P

No Library Search Compounds Detected

Data Path : Z:\voasrv\HPCHEM1\MSVOA_X\Data\VX112122\
Data File : VX032942.D
Acq On : 21 Nov 2022 11:14
Operator : JC/MD
Sample : VX1121WBL01
Misc : 5.0mL/MSVOA_X/WATER
ALS Vial : 4 Sample Multiplier: 1

Instrument :
MSVOA_X
ClientSampleId :
VX1121WBL01

Quant Method : Z:\voasrv\HPCHEM1\MSVOA_X\Method\82X102622W.M
Quant Title : SW846 8260

TIC Library : C:\Database\NIST0.L
TIC Integration Parameters: LSCINT.P

TIC Top Hit name	RT	EstConc	Units	Response	--Internal Standard--		
					#	RT	Resp Conc
