

Data Path : Z:\voasrv\HPCHEM1\MSVOA\_X\Data\VX112123\  
 Data File : VX038975.D  
 Acq On : 21 Nov 2023 11:34  
 Operator : JC/MD  
 Sample : VX1121MBL01  
 Misc : 5.00g/10mL/100uL/5.00mL/MSVOA\_X/MEOH  
 ALS Vial : 3 Sample Multiplier: 1

**Instrument :**  
 MSVOA\_X  
**ClientSampleId :**  
 VX1121MBL01

Quant Time: Nov 22 03:16:06 2023  
 Quant Method : Z:\voasrv\HPCHEM1\MSVOA\_X\Method\82X111623W.M  
 Quant Title : SW846 8260  
 QLast Update : Thu Nov 16 22:59:22 2023  
 Response via : Initial Calibration

Compound	R.T.	QIon	Response	Conc	Units	Dev(Min)
Internal Standards						
1) Pentafluorobenzene	5.550	168	103706	50.000	ug/l	0.00
34) 1,4-Difluorobenzene	6.757	114	205424	50.000	ug/l	0.00
63) Chlorobenzene-d5	10.055	117	209662	50.000	ug/l	0.00
72) 1,4-Dichlorobenzene-d4	12.024	152	102634	50.000	ug/l	0.00
System Monitoring Compounds						
33) 1,2-Dichloroethane-d4	5.952	65	79797	47.752	ug/l	0.00
Spiked Amount	50.000	Range	78 - 117	Recovery	=	95.500%
35) Dibromofluoromethane	5.379	113	66495	44.819	ug/l	0.00
Spiked Amount	50.000	Range	75 - 124	Recovery	=	89.640%
50) Toluene-d8	8.647	98	258934	45.616	ug/l	0.00
Spiked Amount	50.000	Range	92 - 112	Recovery	=	91.240%#
62) 4-Bromofluorobenzene	11.079	95	109853	48.344	ug/l	0.00
Spiked Amount	50.000	Range	83 - 123	Recovery	=	96.680%

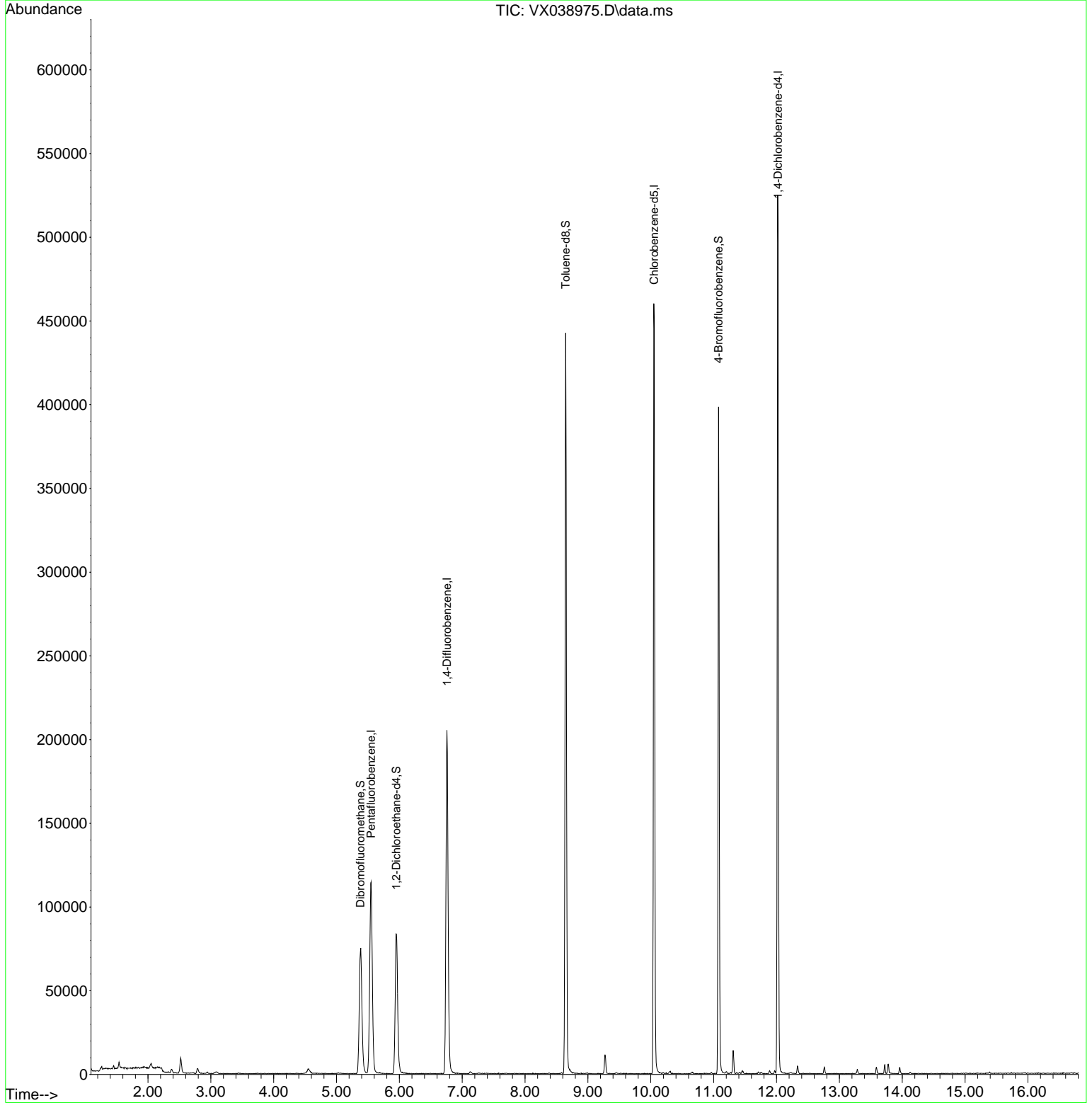
Target Compounds Qvalue

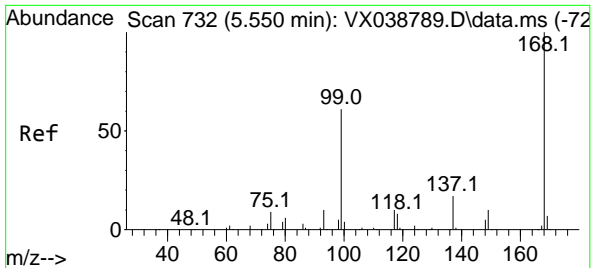
(#) = qualifier out of range (m) = manual integration (+) = signals summed

Data Path : Z:\voasrv\HPCHEM1\MSVOA\_X\Data\VX112123\  
 Data File : VX038975.D  
 Acq On : 21 Nov 2023 11:34  
 Operator : JC/MD  
 Sample : VX1121MBL01  
 Misc : 5.00g/10mL/100uL/5.00mL/MSVOA\_X/MEOH  
 ALS Vial : 3 Sample Multiplier: 1

Instrument :  
 MSVOA\_X  
 ClientSampleId :  
 VX1121MBL01

Quant Time: Nov 22 03:16:06 2023  
 Quant Method : Z:\voasrv\HPCHEM1\MSVOA\_X\Method\82X111623W.M  
 Quant Title : SW846 8260  
 QLast Update : Thu Nov 16 22:59:22 2023  
 Response via : Initial Calibration

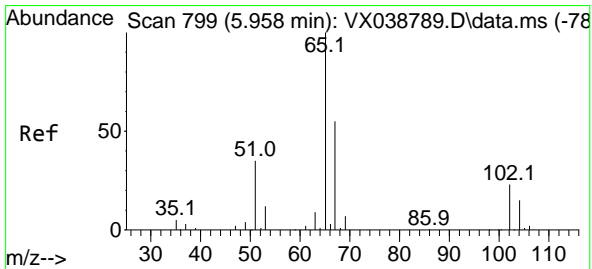
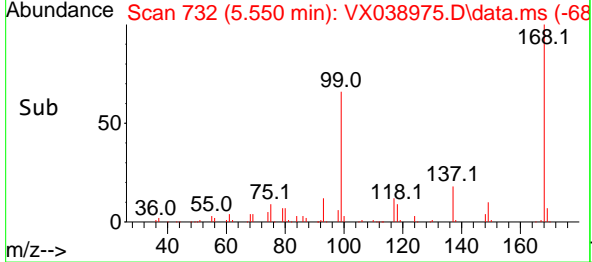
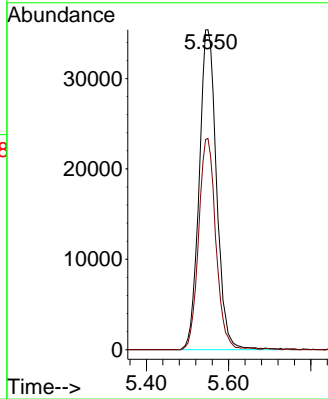
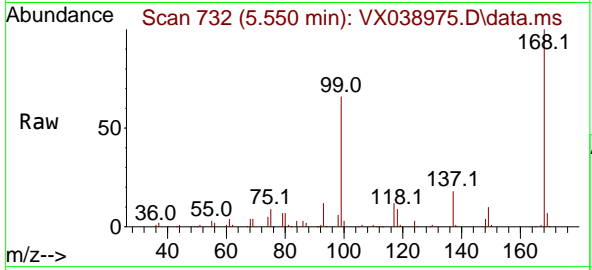




#1  
 Pentafluorobenzene  
 Concen: 50.000 ug/l  
 RT: 5.550 min Scan# 711  
 Delta R.T. -0.000 min  
 Lab File: VX038975.D  
 Acq: 21 Nov 2023 11:34

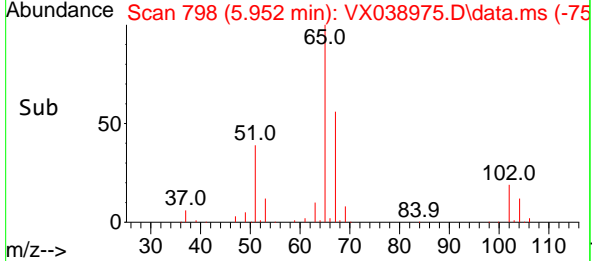
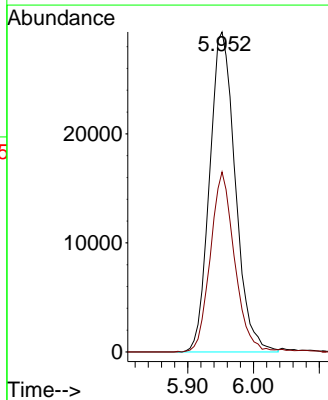
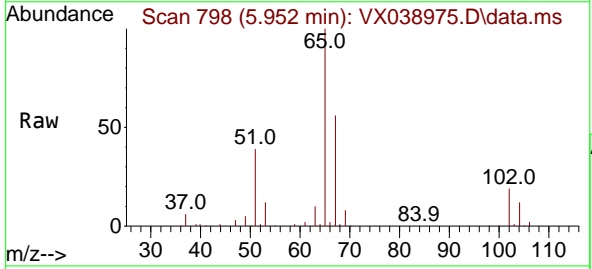
Instrument :  
 MSVOA\_X  
 ClientSampleId :  
 VX1121MBL01

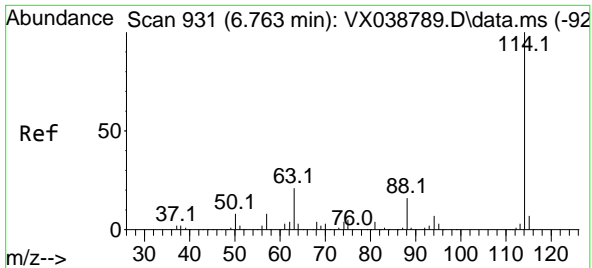
Tgt Ion:168 Resp: 103706  
 Ion Ratio Lower Upper  
 168 100  
 99 66.0 56.6 85.0



#33  
 1,2-Dichloroethane-d4  
 Concen: 47.752 ug/l  
 RT: 5.952 min Scan# 798  
 Delta R.T. -0.006 min  
 Lab File: VX038975.D  
 Acq: 21 Nov 2023 11:34

Tgt Ion: 65 Resp: 79797  
 Ion Ratio Lower Upper  
 65 100  
 67 52.8 0.0 100.2



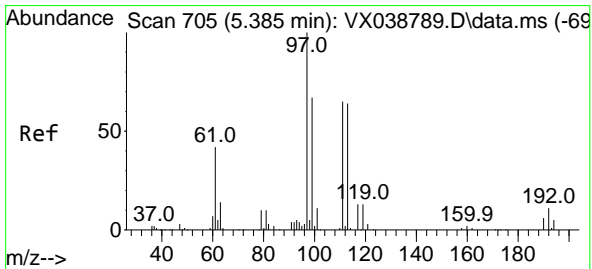
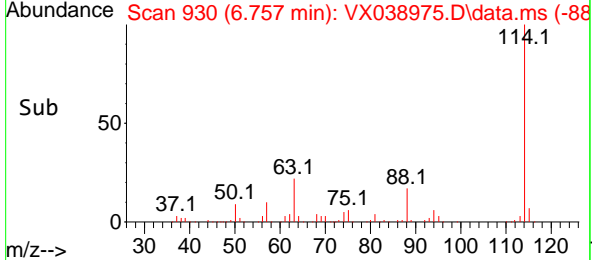
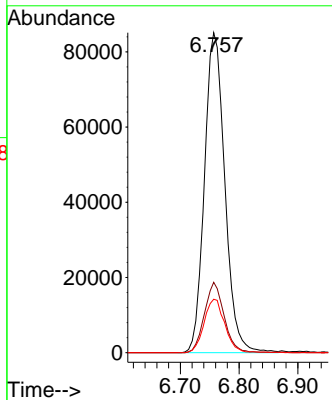
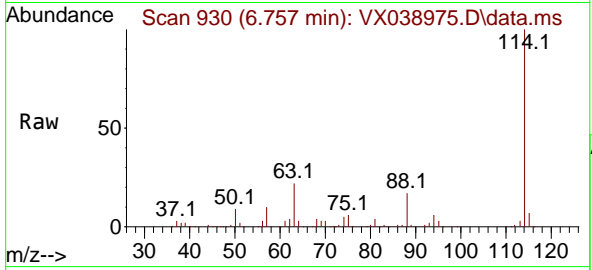


#34  
 1,4-Difluorobenzene  
 Concen: 50.000 ug/l  
 RT: 6.757 min Scan# 911  
 Delta R.T. -0.006 min  
 Lab File: VX038975.D  
 Acq: 21 Nov 2023 11:34

Instrument : MSVOA\_X  
 ClientSampleId : VX1121MBL01

Tgt Ion:114 Resp: 205424

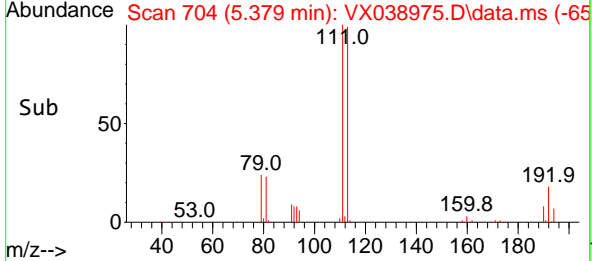
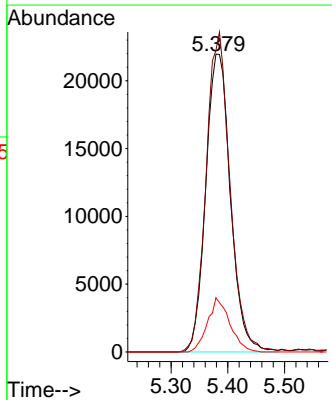
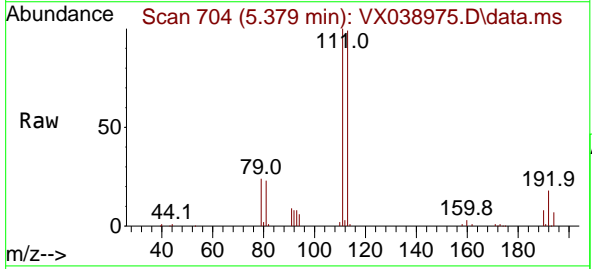
Ion	Ratio	Lower	Upper
114	100		
63	22.0	0.0	45.0
88	16.7	0.0	36.6

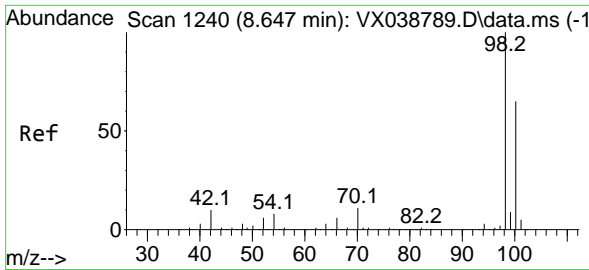


#35  
 Dibromofluoromethane  
 Concen: 44.819 ug/l  
 RT: 5.379 min Scan# 704  
 Delta R.T. -0.006 min  
 Lab File: VX038975.D  
 Acq: 21 Nov 2023 11:34

Tgt Ion:113 Resp: 66495

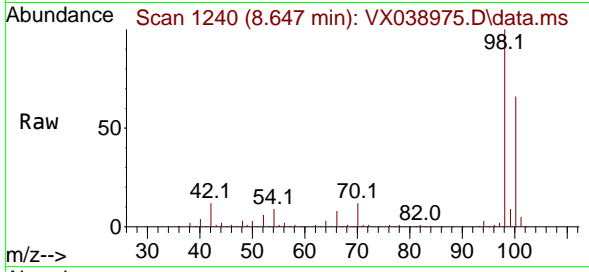
Ion	Ratio	Lower	Upper
113	100		
111	104.0	82.9	124.3
192	16.4	13.3	19.9



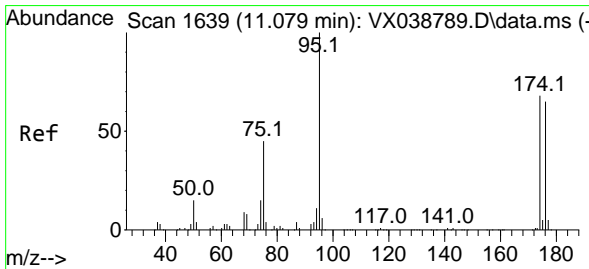
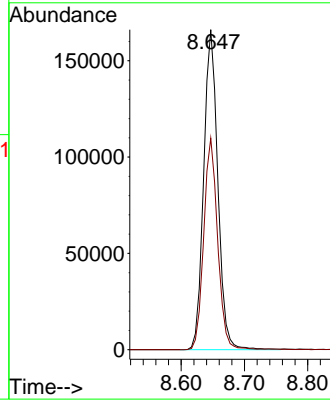
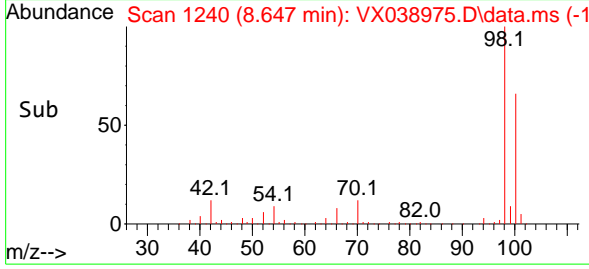


#50  
 Toluene-d8  
 Concen: 45.616 ug/l  
 RT: 8.647 min Scan# 11  
 Delta R.T. -0.000 min  
 Lab File: VX038975.D  
 Acq: 21 Nov 2023 11:34

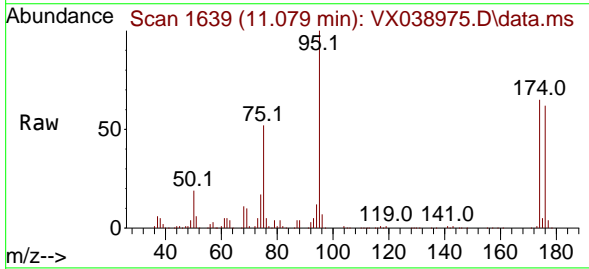
Instrument :  
 MSVOA\_X  
 ClientSampleId :  
 VX1121MBL01



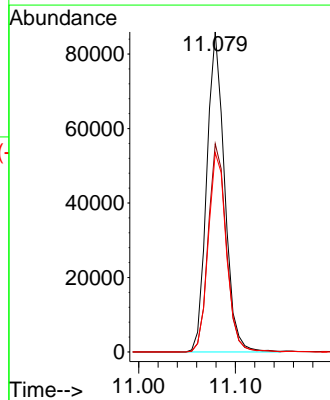
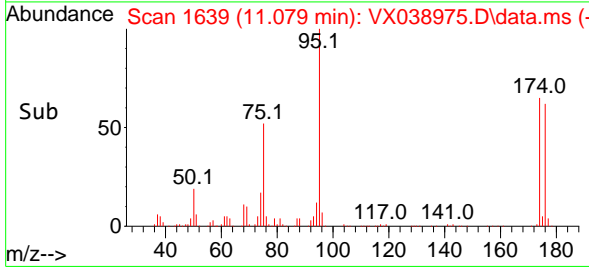
Tgt Ion: 98 Resp: 258934  
 Ion Ratio Lower Upper  
 98 100  
 100 64.8 53.1 79.7

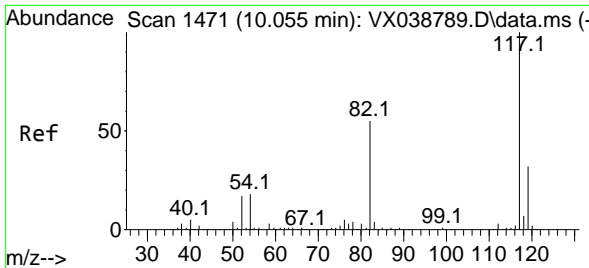


#62  
 4-Bromofluorobenzene  
 Concen: 48.344 ug/l  
 RT: 11.079 min Scan# 1639  
 Delta R.T. 0.000 min  
 Lab File: VX038975.D  
 Acq: 21 Nov 2023 11:34



Tgt Ion: 95 Resp: 109853  
 Ion Ratio Lower Upper  
 95 100  
 174 65.9 0.0 135.6  
 176 63.8 0.0 131.0



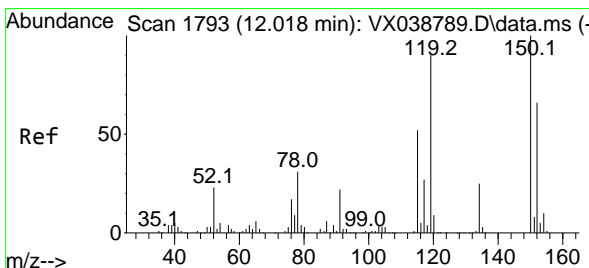
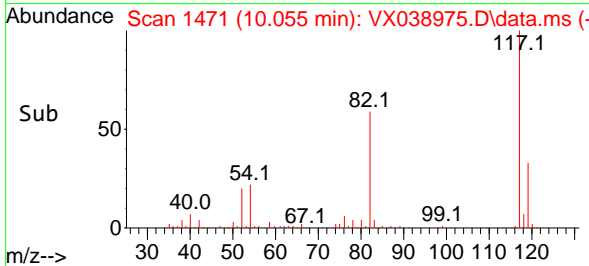
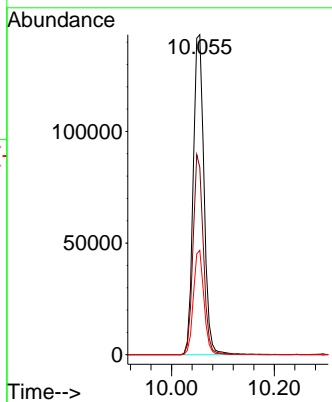
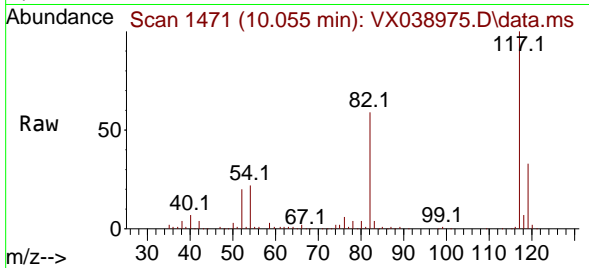


#63  
 Chlorobenzene-d5  
 Concen: 50.000 ug/l  
 RT: 10.055 min Scan# 14  
 Delta R.T. -0.000 min  
 Lab File: VX038975.D  
 Acq: 21 Nov 2023 11:34

Instrument :  
 MSVOA\_X  
 ClientSampleId :  
 VX1121MBL01

Tgt Ion:117 Resp: 209662

Ion	Ratio	Lower	Upper
117	100		
82	58.5	46.2	69.4
119	32.6	25.5	38.3



#72  
 1,4-Dichlorobenzene-d4  
 Concen: 50.000 ug/l  
 RT: 12.024 min Scan# 1794  
 Delta R.T. 0.006 min  
 Lab File: VX038975.D  
 Acq: 21 Nov 2023 11:34

Tgt Ion:152 Resp: 102634

Ion	Ratio	Lower	Upper
152	100		
115	65.6	43.3	129.9
150	154.9	0.0	345.0

