

Data Path : Z:\voasrv\HPCHEM1\MSVOA_X\Data\VX112123\
 Data File : VX038981.D
 Acq On : 21 Nov 2023 13:55
 Operator : JC/MD
 Sample : 05431-07DL 10X
 Misc : 5.0mL/MSVOA_X/WATER
 ALS Vial : 9 Sample Multiplier: 1

Instrument :
 MSVOA_X
 ClientSampleId :
 18BR-20231113DL

Quant Time: Nov 22 03:19:38 2023
 Quant Method : Z:\voasrv\HPCHEM1\MSVOA_X\Method\82X111623W.M
 Quant Title : SW846 8260
 QLast Update : Thu Nov 16 22:59:22 2023
 Response via : Initial Calibration

Compound	R.T.	QIon	Response	Conc	Units	Dev(Min)

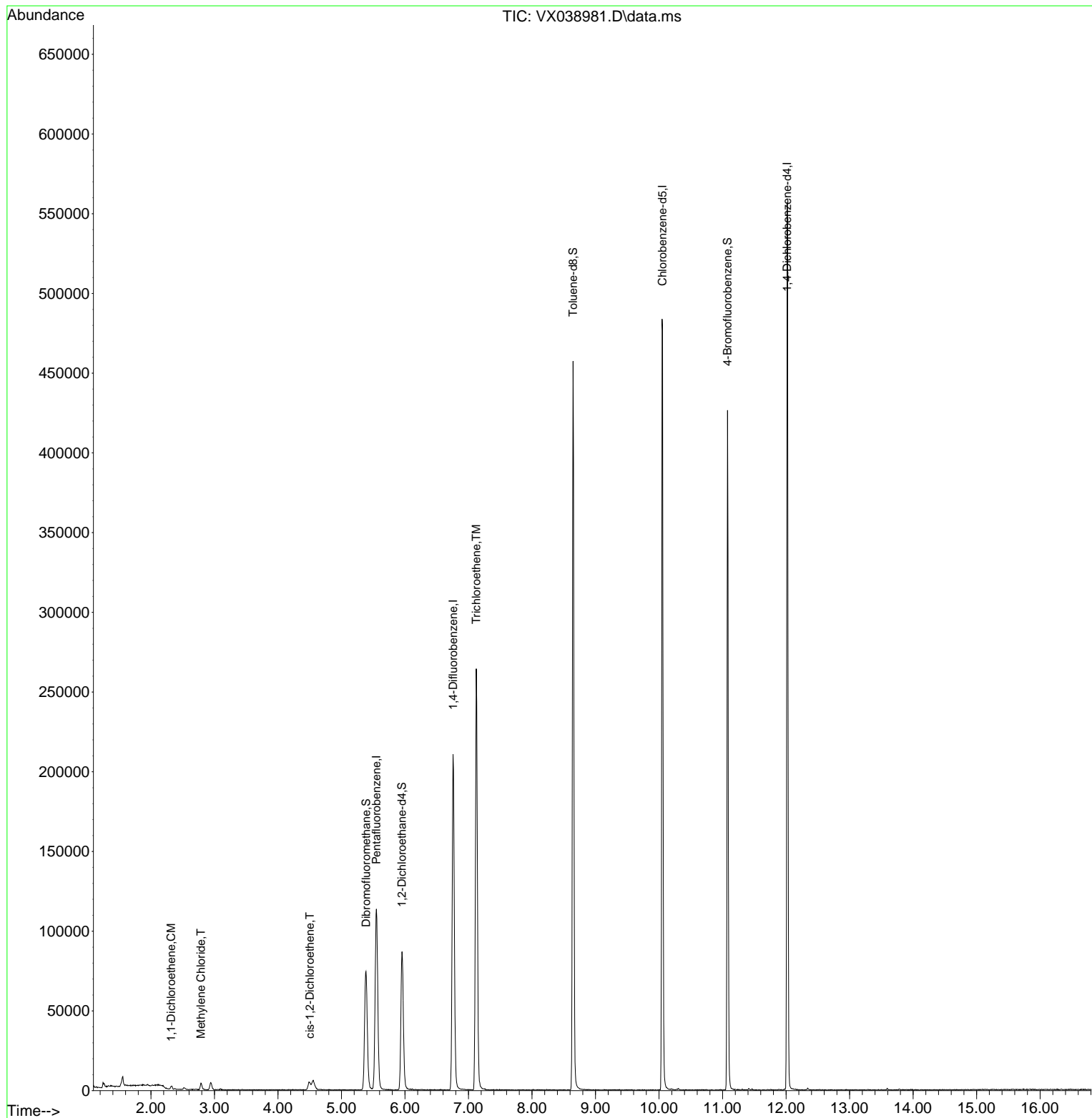
Internal Standards						
1) Pentafluorobenzene	5.550	168	101170	50.000	ug/l	0.00
34) 1,4-Difluorobenzene	6.757	114	207493	50.000	ug/l	0.00
63) Chlorobenzene-d5	10.055	117	215488	50.000	ug/l	0.00
72) 1,4-Dichlorobenzene-d4	12.018	152	109207	50.000	ug/l	0.00
System Monitoring Compounds						
33) 1,2-Dichloroethane-d4	5.952	65	84180	51.638	ug/l	0.00
Spiked Amount	50.000	Range	78 - 117	Recovery	=	103.280%
35) Dibromofluoromethane	5.385	113	67461	45.017	ug/l	0.00
Spiked Amount	50.000	Range	75 - 124	Recovery	=	90.040%
50) Toluene-d8	8.647	98	266778	46.529	ug/l	0.00
Spiked Amount	50.000	Range	92 - 112	Recovery	=	93.060%
62) 4-Bromofluorobenzene	11.079	95	116702	50.846	ug/l	0.00
Spiked Amount	50.000	Range	83 - 123	Recovery	=	101.700%
Target Compounds						
						Qvalue
12) 1,1-Dichloroethene	2.319	96	533	0.423	ug/l	94
20) Methylene Chloride	2.788	84	2051	1.311	ug/l #	89
27) cis-1,2-Dichloroethene	4.501	96	3336	2.057	ug/l	80
44) Trichloroethene	7.123	130	92747	59.982	ug/l	93

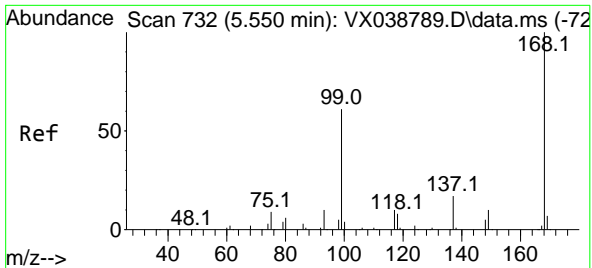
(#) = qualifier out of range (m) = manual integration (+) = signals summed

Data Path : Z:\voasrv\HPCHEM1\MSVOA_X\Data\VX112123\
 Data File : VX038981.D
 Acq On : 21 Nov 2023 13:55
 Operator : JC/MD
 Sample : 05431-07DL 10X
 Misc : 5.0mL/MSVOA_X/WATER
 ALS Vial : 9 Sample Multiplier: 1

Instrument :
 MSVOA_X
 ClientSampleId :
 18BR-20231113DL

Quant Time: Nov 22 03:19:38 2023
 Quant Method : Z:\voasrv\HPCHEM1\MSVOA_X\Method\82X111623W.M
 Quant Title : SW846 8260
 QLast Update : Thu Nov 16 22:59:22 2023
 Response via : Initial Calibration

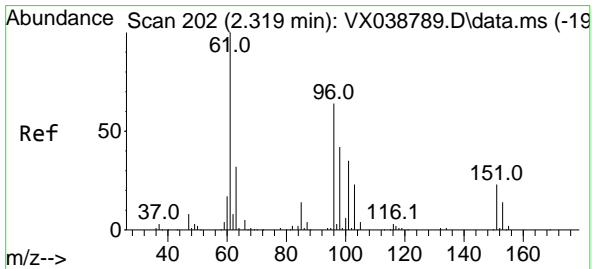
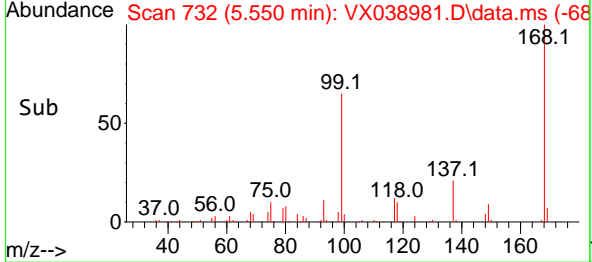
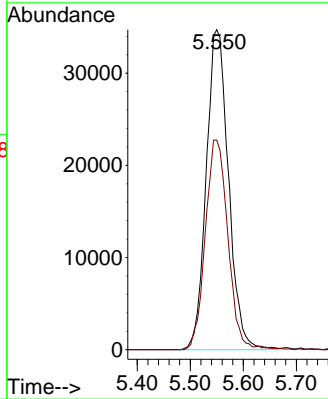
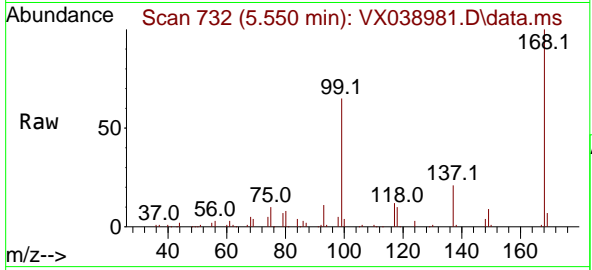




#1
 Pentafluorobenzene
 Concen: 50.000 ug/l
 RT: 5.550 min Scan# 71
 Delta R.T. -0.000 min
 Lab File: VX038981.D
 Acq: 21 Nov 2023 13:55

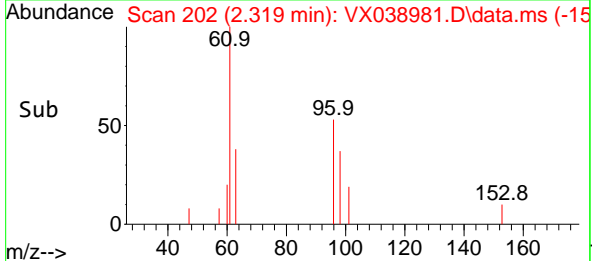
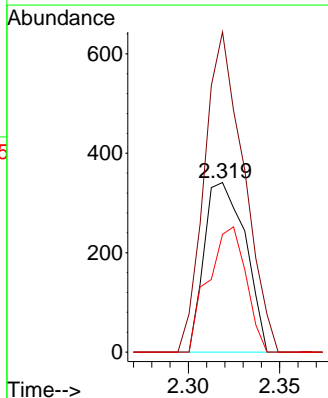
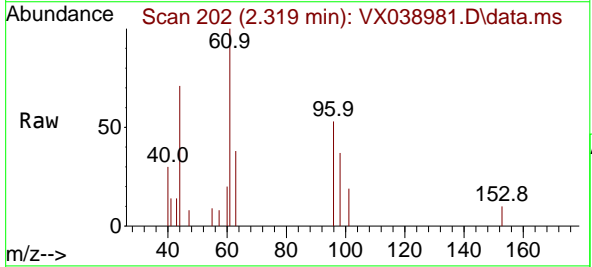
Instrument :
 MSVOA_X
 ClientSampleId :
 18BR-20231113DL

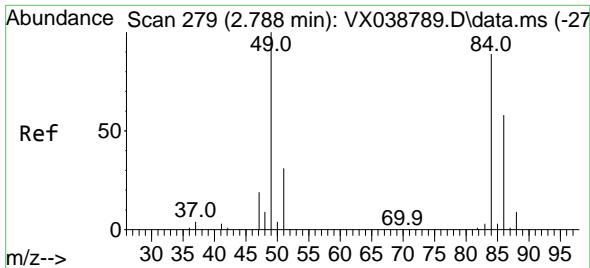
Tgt Ion:168 Resp: 101170
 Ion Ratio Lower Upper
 168 100
 99 65.5 56.6 85.0



#12
 1,1-Dichloroethene
 Concen: 0.423 ug/l
 RT: 2.319 min Scan# 202
 Delta R.T. 0.000 min
 Lab File: VX038981.D
 Acq: 21 Nov 2023 13:55

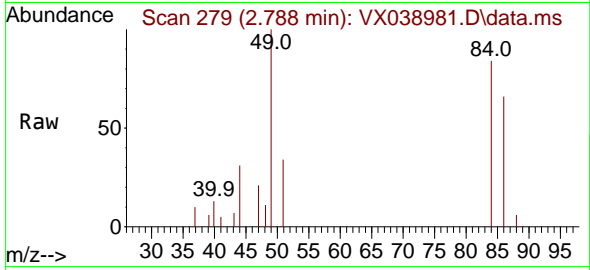
Tgt Ion: 96 Resp: 533
 Ion Ratio Lower Upper
 96 100
 61 188.9 144.6 216.8
 98 69.5 50.4 75.6





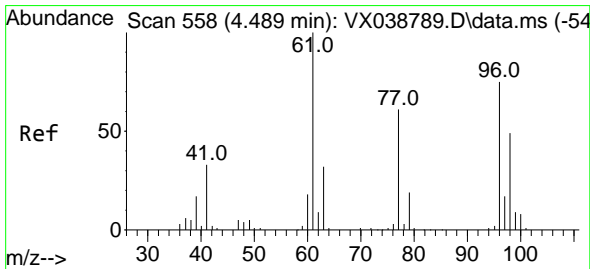
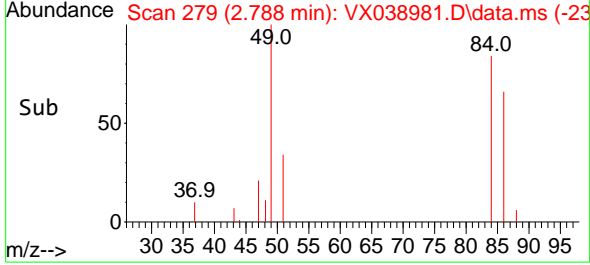
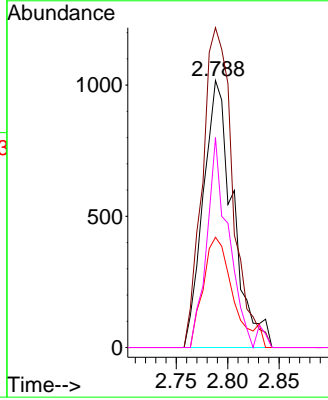
#20
 Methylene Chloride
 Concen: 1.311 ug/l
 RT: 2.788 min Scan# 21
 Delta R.T. 0.000 min
 Lab File: VX038981.D
 Acq: 21 Nov 2023 13:55

Instrument : MSVOA_X
 ClientSampleId : 18BR-20231113DL



Tgt Ion: 84 Resp: 2051

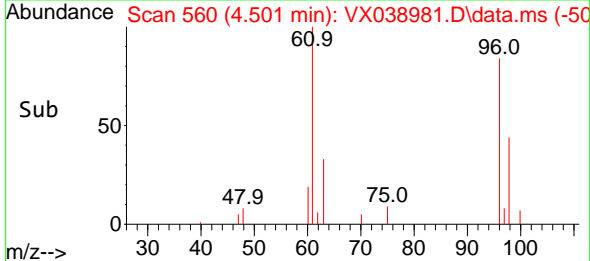
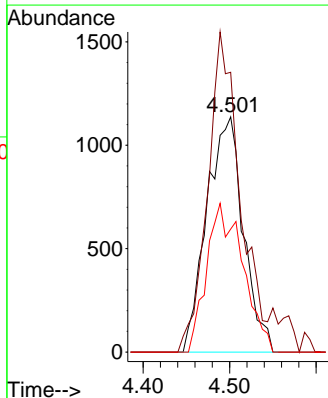
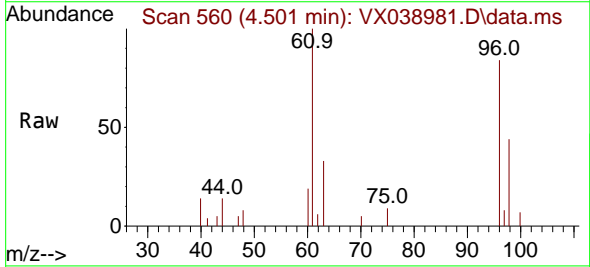
Ion	Ratio	Lower	Upper
84	100		
49	119.7	103.6	155.4
51	41.3	33.8	50.6
86	78.6	49.4	74.0

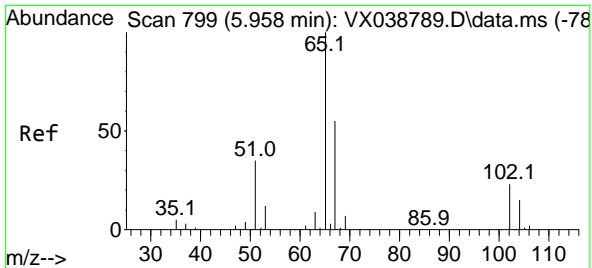


#27
 cis-1,2-Dichloroethene
 Concen: 2.057 ug/l
 RT: 4.501 min Scan# 560
 Delta R.T. 0.012 min
 Lab File: VX038981.D
 Acq: 21 Nov 2023 13:55

Tgt Ion: 96 Resp: 3336

Ion	Ratio	Lower	Upper
96	100		
61	120.5	0.0	312.2
98	62.8	0.0	129.0

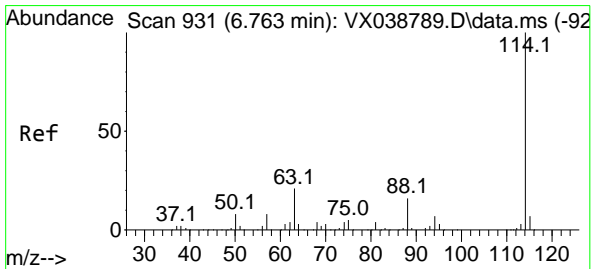
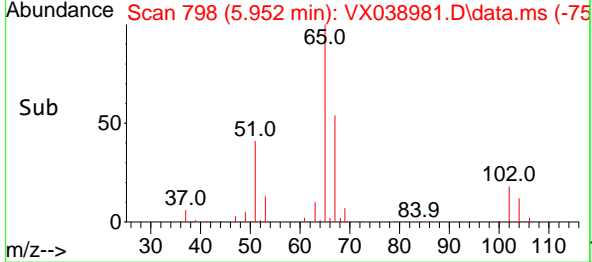
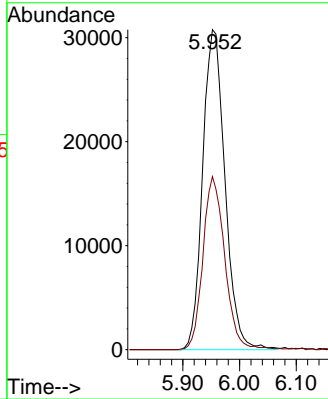
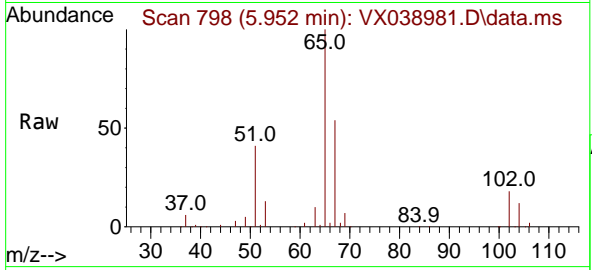




#33
 1,2-Dichloroethane-d4
 Concen: 51.638 ug/l
 RT: 5.952 min Scan# 798
 Delta R.T. -0.006 min
 Lab File: VX038981.D
 Acq: 21 Nov 2023 13:55

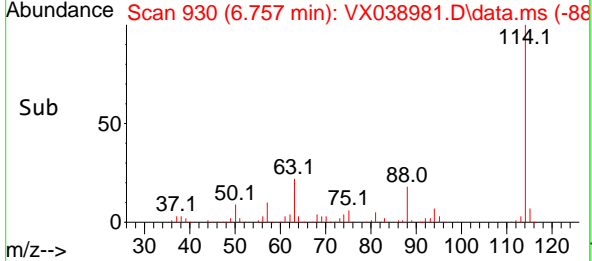
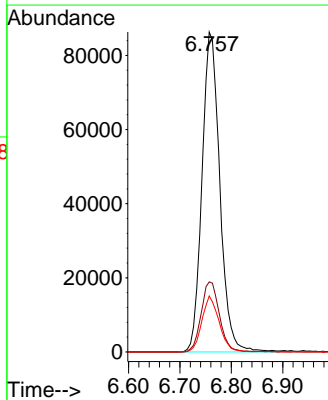
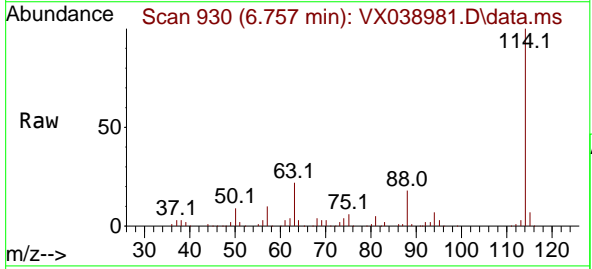
Instrument : MSVOA_X
 ClientSampleId : 18BR-20231113DL

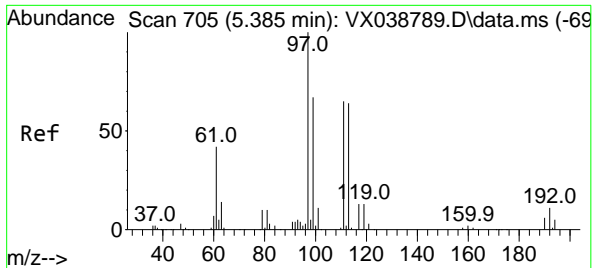
Tgt Ion: 65 Resp: 84180
 Ion Ratio Lower Upper
 65 100
 67 52.8 0.0 100.2



#34
 1,4-Difluorobenzene
 Concen: 50.000 ug/l
 RT: 6.757 min Scan# 930
 Delta R.T. -0.006 min
 Lab File: VX038981.D
 Acq: 21 Nov 2023 13:55

Tgt Ion:114 Resp: 207493
 Ion Ratio Lower Upper
 114 100
 63 21.9 0.0 45.0
 88 17.5 0.0 36.6

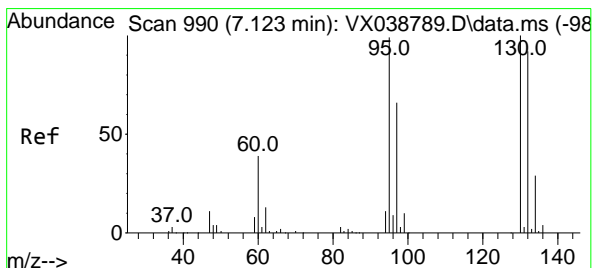
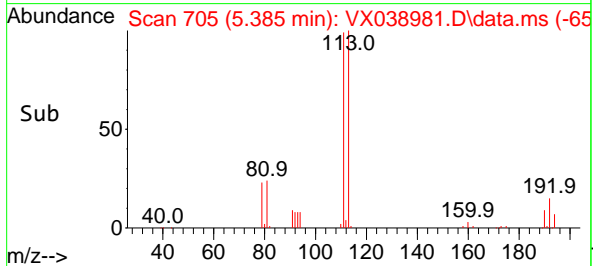
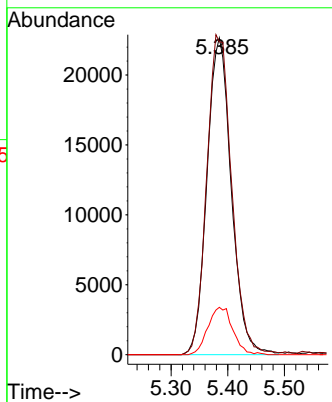
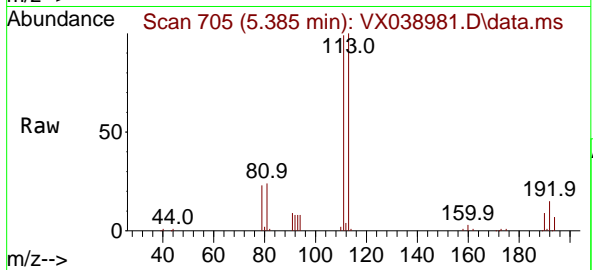




#35
 Dibromofluoromethane
 Concen: 45.017 ug/l
 RT: 5.385 min Scan# 705
 Delta R.T. 0.000 min
 Lab File: VX038981.D
 Acq: 21 Nov 2023 13:55

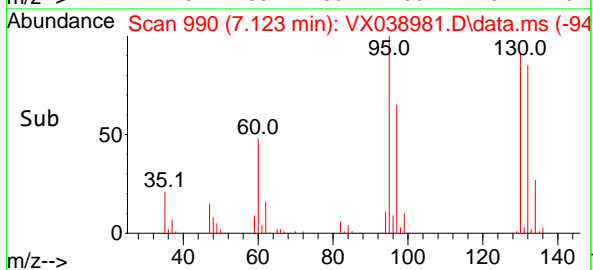
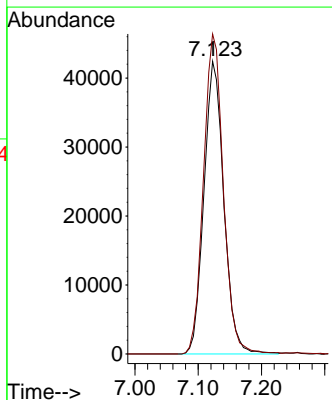
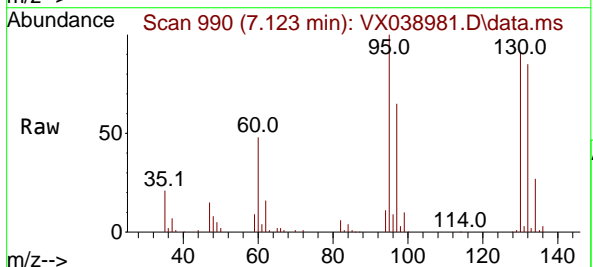
Instrument : MSVOA_X
 ClientSampleId : 18BR-20231113DL

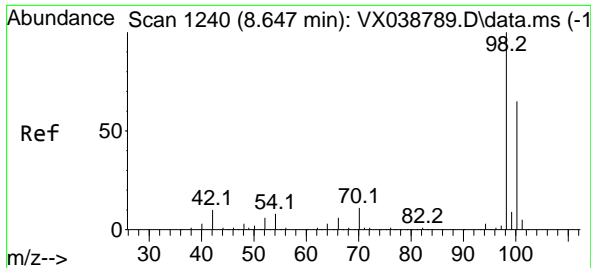
Tgt Ion	Resp	Lower	Upper
113	100		
111	103.4	82.9	124.3
192	15.3	13.3	19.9



#44
 Trichloroethene
 Concen: 59.982 ug/l
 RT: 7.123 min Scan# 990
 Delta R.T. 0.000 min
 Lab File: VX038981.D
 Acq: 21 Nov 2023 13:55

Tgt Ion	Resp	Lower	Upper
130	100		
95	109.3	0.0	204.4

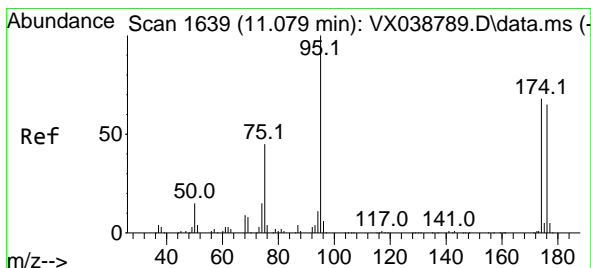
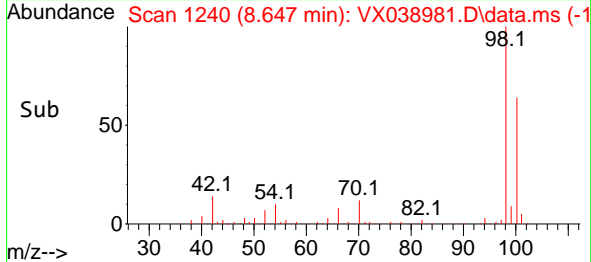
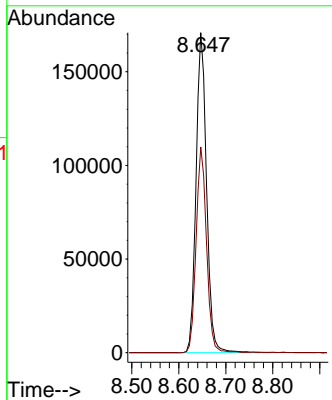
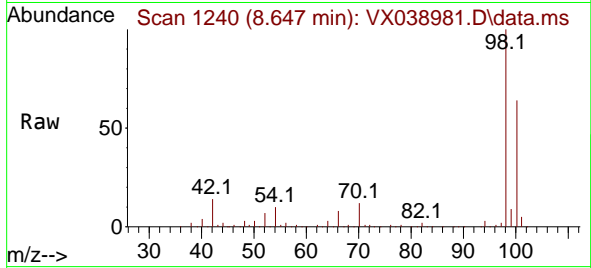




#50
 Toluene-d8
 Concen: 46.529 ug/l
 RT: 8.647 min Scan# 11
 Delta R.T. 0.000 min
 Lab File: VX038981.D
 Acq: 21 Nov 2023 13:55

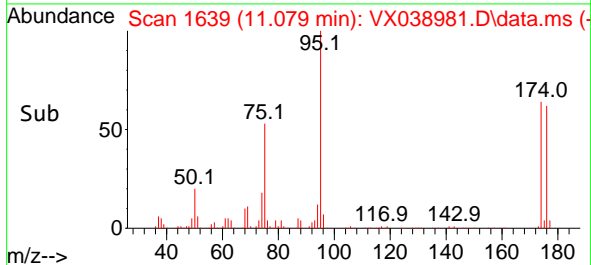
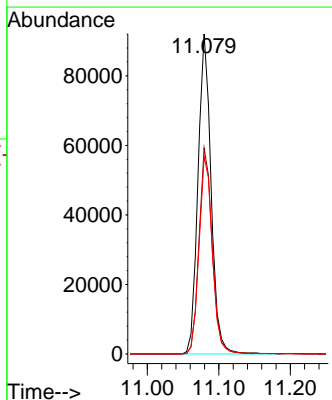
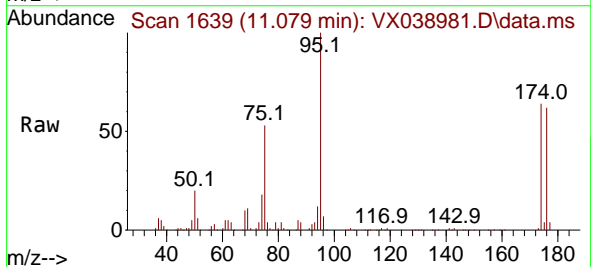
Instrument : MSVOA_X
 ClientSampleId : 18BR-20231113DL

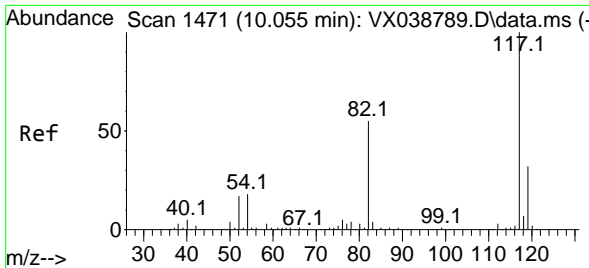
Tgt Ion: 98 Resp: 266778
 Ion Ratio Lower Upper
 98 100
 100 63.8 53.1 79.7



#62
 4-Bromofluorobenzene
 Concen: 50.846 ug/l
 RT: 11.079 min Scan# 1639
 Delta R.T. 0.000 min
 Lab File: VX038981.D
 Acq: 21 Nov 2023 13:55

Tgt Ion: 95 Resp: 116702
 Ion Ratio Lower Upper
 95 100
 174 65.0 0.0 135.6
 176 62.8 0.0 131.0



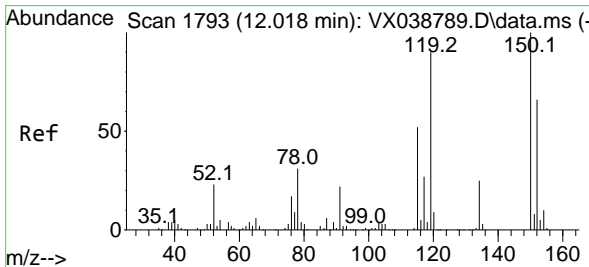
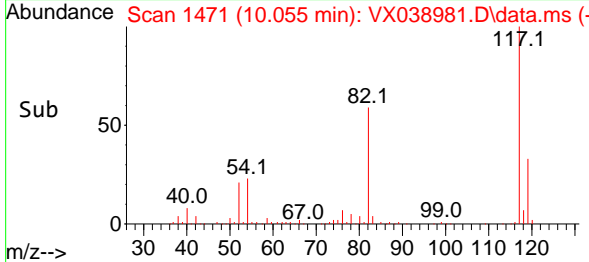
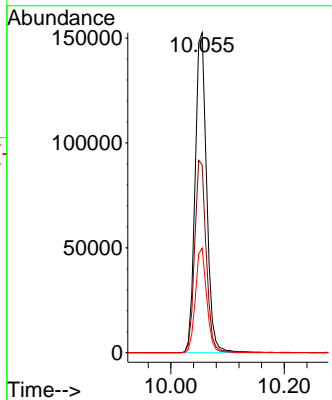
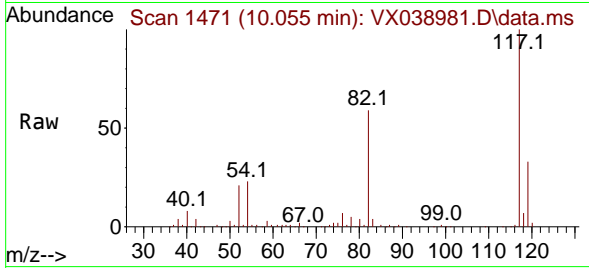


#63
 Chlorobenzene-d5
 Concen: 50.000 ug/l
 RT: 10.055 min Scan# 14
 Delta R.T. 0.000 min
 Lab File: VX038981.D
 Acq: 21 Nov 2023 13:55

Instrument :
 MSVOA_X
 ClientSampleId :
 18BR-20231113DL

Tgt Ion:117 Resp: 215488

Ion	Ratio	Lower	Upper
117	100		
82	58.7	46.2	69.4
119	32.7	25.5	38.3



#72
 1,4-Dichlorobenzene-d4
 Concen: 50.000 ug/l
 RT: 12.018 min Scan# 1793
 Delta R.T. 0.000 min
 Lab File: VX038981.D
 Acq: 21 Nov 2023 13:55

Tgt Ion:152 Resp: 109207

Ion	Ratio	Lower	Upper
152	100		
115	65.0	43.3	129.9
150	158.1	0.0	345.0

