

Data Path : Z:\voasrv\HPCHEM1\MSVOA_X\Data\VX112123\
 Data File : VX038987.D
 Acq On : 21 Nov 2023 16:12
 Operator : JC/MD
 Sample : 05407-10 100X
 Misc : 5.0mL/MSVOA_X/WATER
 ALS Vial : 15 Sample Multiplier: 1

Instrument :
 MSVOA_X
 ClientSampleId :
 DUP-01-20231114

Integration Parameters: RTEINT.P

Integrator: RTE
 Smoothing : ON Filtering: 5
 Sampling : 1 Min Area: 3 % of largest Peak
 Start Thrs: 0.2 Max Peaks: 100
 Stop Thrs : 0 Peak Location: TOP

If leading or trailing edge < 100 prefer < Baseline drop else tangent >
 Peak separation: 5

Method : Z:\voasrv\HPCHEM1\MSVOA_X\Method\82X111623W.M
 Title : SW846 8260

Signal : TIC: VX038987.D\data.ms

peak #	R.T. min	first scan	max scan	last scan	PK TY	peak height	corr. area	corr. % max.	% of total
1	1.550	69	76	81	rBV7	4860	9752	1.33%	0.240%
2	2.940	297	304	313	rVB3	3409	8107	1.11%	0.200%
3	4.556	558	569	581	rBV2	5509	18158	2.48%	0.447%
4	5.385	691	705	721	rBV	77855	227066	31.07%	5.593%
5	5.550	721	732	748	rVV2	113632	329524	45.10%	8.116%
6	5.958	788	799	815	rBV	91624	244991	33.53%	6.034%
7	6.763	922	931	950	rBV	211666	515197	70.51%	12.690%
8	8.647	1233	1240	1256	rBV	458155	729857	99.88%	17.977%
9	10.055	1465	1471	1488	rBV	484796	697213	95.42%	17.173%
10	11.079	1634	1639	1656	rBV	426859	549399	75.19%	13.532%
11	12.018	1788	1793	1804	rBV	559772	730710	100.00%	17.998%

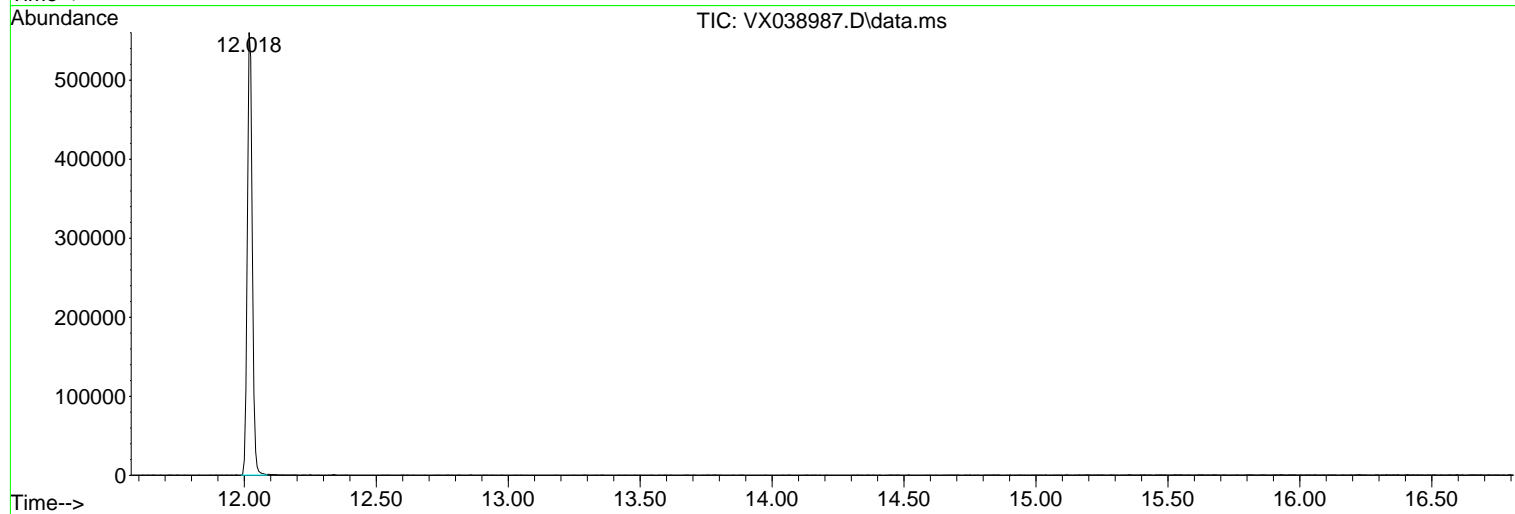
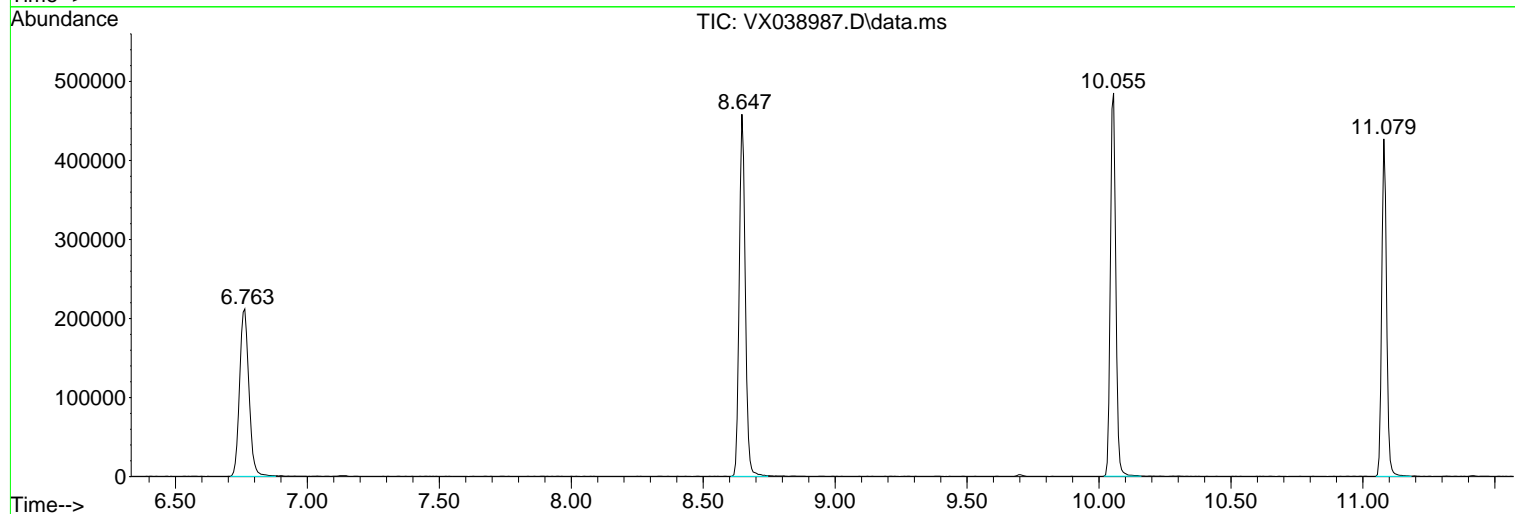
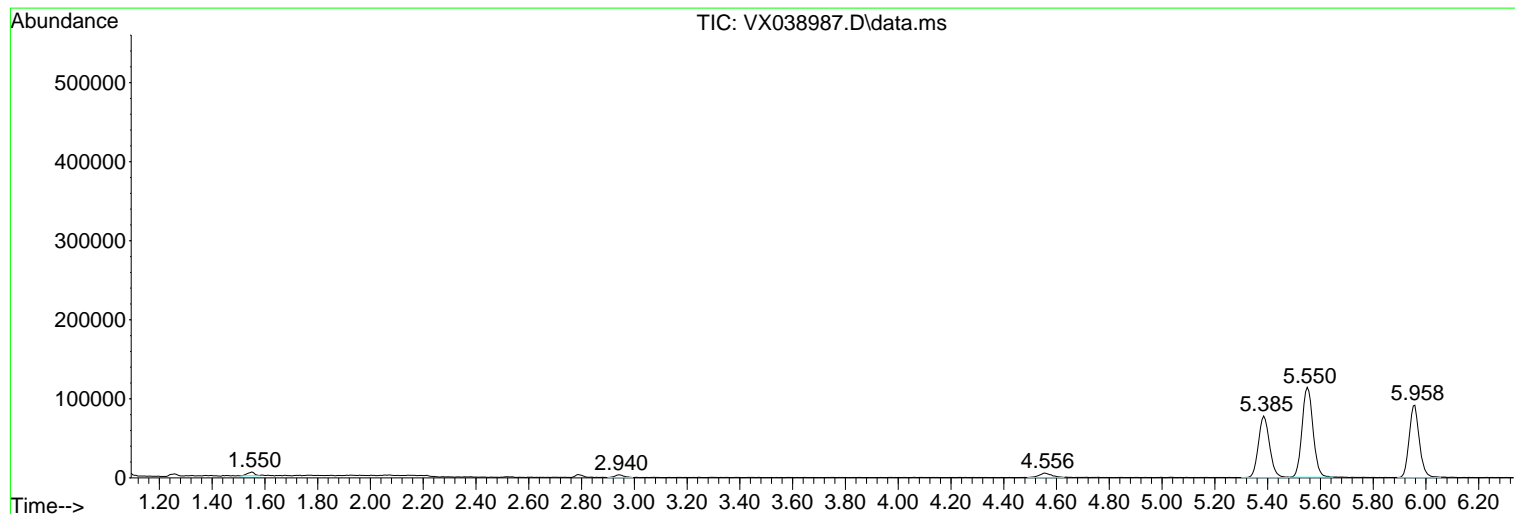
Sum of corrected areas: 4059974

Data Path : Z:\voasrv\HPCHEM1\MSVOA_X\Data\VX112123\
 Data File : VX038987.D
 Acq On : 21 Nov 2023 16:12
 Operator : JC/MD
 Sample : 05407-10 100X
 Misc : 5.0mL/MSVOA_X/WATER
 ALS Vial : 15 Sample Multiplier: 1

Instrument :
 MSVOA_X
 ClientSampleId :
 DUP-01-20231114

Quant Method : Z:\voasrv\HPCHEM1\MSVOA_X\Method\82X111623W.M
 Quant Title : SW846 8260

TIC Library : C:\Database\NIST20.L
 TIC Integration Parameters: LSCINT.P



Library Search Compound Report

Data Path : Z:\voasrv\HPCHEM1\MSVOA_X\Data\VX112123\
Data File : VX038987.D
Acq On : 21 Nov 2023 16:12
Operator : JC/MD
Sample : 05407-10 100X
Misc : 5.0mL/MSVOA_X/WATER
ALS Vial : 15 Sample Multiplier: 1

Instrument :
MSVOA_X
ClientSampleId :
DUP-01-20231114

Quant Method : Z:\voasrv\HPCHEM1\MSVOA_X\Method\82X111623W.M
Quant Title : SW846 8260

TIC Library : C:\Database\NIST20.L
TIC Integration Parameters: LSCINT.P

No Library Search Compounds Detected

Data Path : Z:\voasrv\HPCHEM1\MSVOA_X\Data\VX112123\
Data File : VX038987.D
Acq On : 21 Nov 2023 16:12
Operator : JC/MD
Sample : 05407-10 100X
Misc : 5.0mL/MSVOA_X/WATER
ALS Vial : 15 Sample Multiplier: 1

Instrument :
MSVOA_X
ClientSampleId :
DUP-01-20231114

Quant Method : Z:\voasrv\HPCHEM1\MSVOA_X\Method\82X111623W.M
Quant Title : SW846 8260

TIC Library : C:\Database\NIST0.L
TIC Integration Parameters: LSCINT.P

TIC Top Hit name	RT	EstConc	Units	Response	--Internal Standard--			
					#	RT	Resp	Conc
