

Data Path : Z:\VOASRV\HPCHEM1\MSVOA_X\DATA\VX112219\
 Data File : VX013522.D
 Acq On : 22 Nov 2019 10:45
 Operator : JC/SP
 Sample : VX1122WBL01
 Misc : 5.0mL/MSVOA_X/WATER
 ALS Vial : 4 Sample Multiplier: 1

Instrument :
 MSVOA_X
 ClientSampleId :
 VX1122WBL01

Quant Time: Nov 22 14:17:05 2019
 Quant Method : Z:\VOASRV\HPCHEM1\MSVOA_X\METHOD\624X111119W.M
 Quant Title : METHOD 624 VOLATILE ORGANIC ANALYSIS
 QLast Update : Tue Nov 12 01:16:13 2019
 Response via : Initial Calibration

Internal Standards	R.T.	QIon	Response	Conc	Units	Dev(Min)
1) Bromochloromethane	5.00	128	100173	30.00	ug/l	0.00
28) 1,4-Difluorobenzene	6.84	114	562651	30.00	ug/l	0.00
57) Chlorobenzene-d5	10.10	117	470760	30.00	ug/l	0.00

System Monitoring Compounds

27) 1,2-Dichloroethane-d4	6.04	65	212081	28.67	ug/l	0.00
Spiked Amount	30.000	Range	50 - 169	Recovery	=	95.57%
60) 4-Bromofluorobenzene	11.14	95	216225	28.58	ug/l	0.00
Spiked Amount	30.000	Range	56 - 143	Recovery	=	95.27%
63) Toluene-d8	8.71	98	647280	30.41	ug/l	0.00
Spiked Amount	30.000	Range	66 - 137	Recovery	=	101.37%

Target Compounds

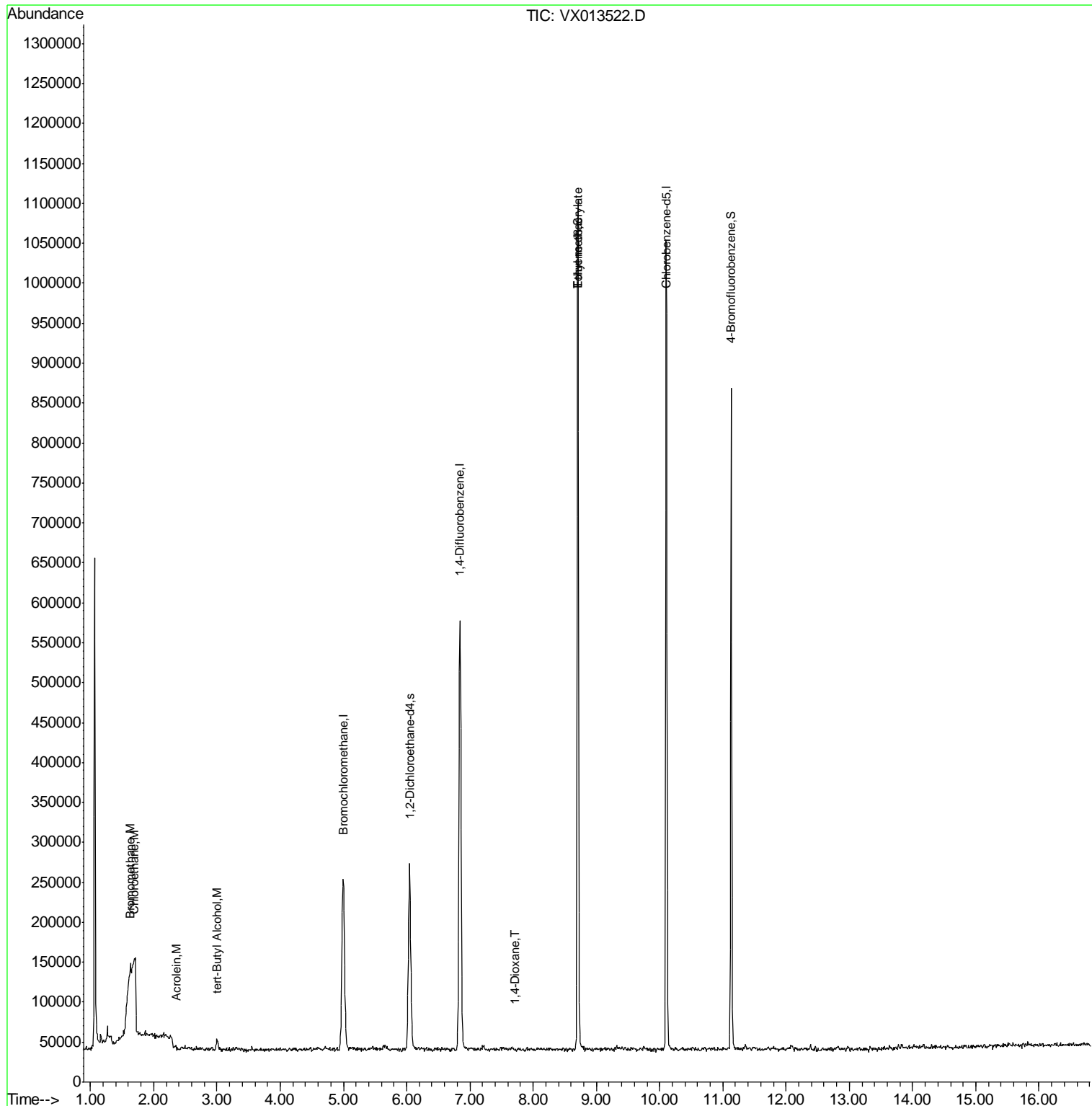
					Qvalue
5) Bromomethane	1.63	94	2650	0.474	ug/l 85
6) Chloroethane	1.70	64	2062	0.404	ug/l # 43
13) Acrolein	2.36	56	345	0.300	ug/l 87
23) tert-Butyl Alcohol	3.00	59	8373	4.364	ug/l # 97
45) 1,4-Dioxane	7.72	88	68	0.370	ug/l # 36
51) Ethyl methacrylate	8.71	69	2654	0.243	ug/l 96

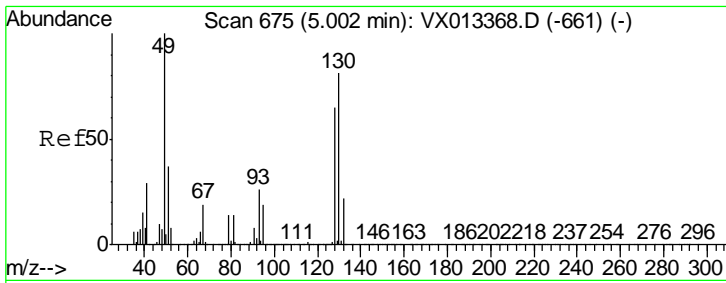
(#) = qualifier out of range (m) = manual integration (+) = signals summed

Data Path : Z:\VOASRV\HPCHEM1\MSVOA_X\DATA\VX112219\
 Data File : VX013522.D
 Acq On : 22 Nov 2019 10:45
 Operator : JC/SP
 Sample : VX1122WBL01
 Misc : 5.0mL/MSVOA_X/WATER
 ALS Vial : 4 Sample Multiplier: 1

Instrument :
 MSVOA_X
 ClientSampleId :
 VX1122WBL01

Quant Time: Nov 22 14:17:05 2019
 Quant Method : Z:\VOASRV\HPCHEM1\MSVOA_X\METHOD\624X111119W.M
 Quant Title : METHOD 624 VOLATILE ORGANIC ANALYSIS
 QLast Update : Tue Nov 12 01:16:13 2019
 Response via : Initial Calibration

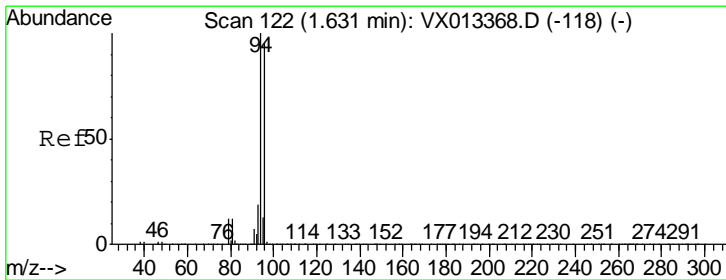
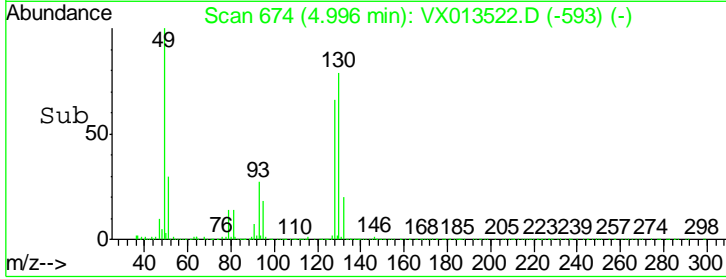
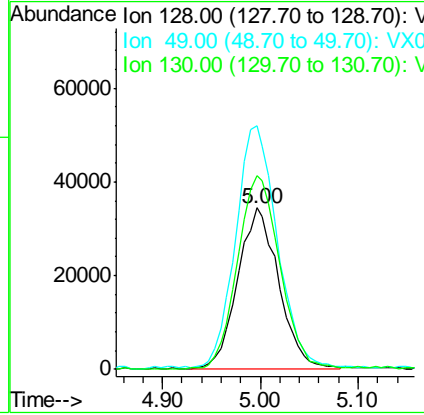
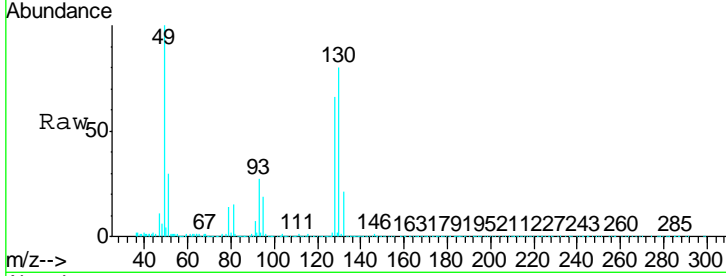




#1
 Bromochloromethane
 Concen: 30.000 ug/l
 RT: 5.00 min Scan# 674
 Delta R.T. -0.01 min
 Lab File: VX013522.D
 Acq: 22 Nov 2019 10:45

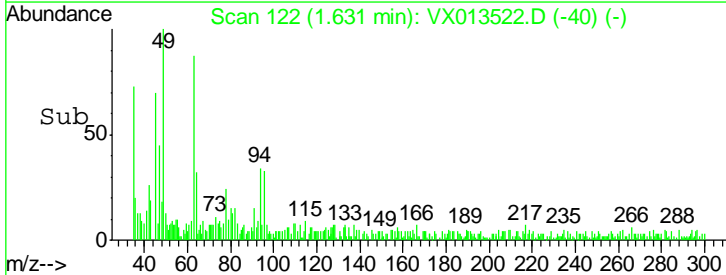
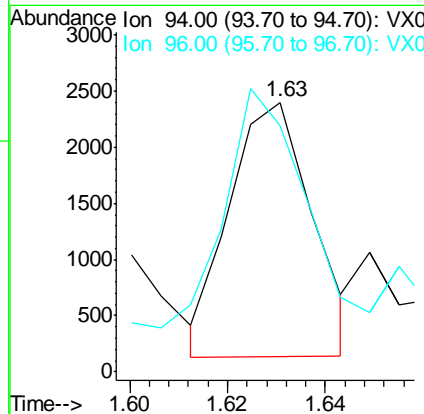
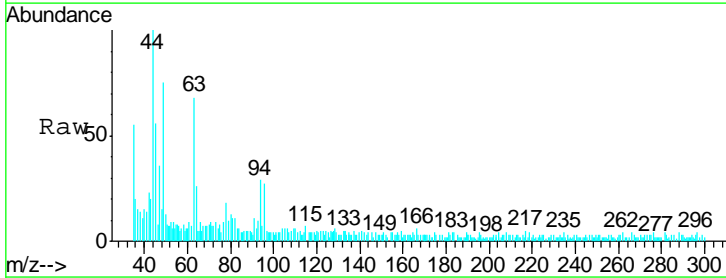
Instrument : MSVOA_X
 ClientSampled : VX1122WBL01

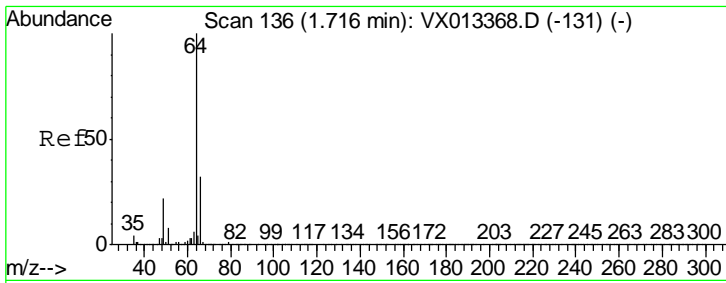
Tgt Ion	Resp	Lower	Upper
128	100173		
49	152.5	0.0	388.3
130	124.2	0.0	318.5



#5
 Bromomethane
 Concen: 0.474 ug/l
 RT: 1.63 min Scan# 122
 Delta R.T. -0.00 min
 Lab File: VX013522.D
 Acq: 22 Nov 2019 10:45

Tgt Ion	Resp	Lower	Upper
94	2650		
94	100		
96	80.4	75.7	113.5

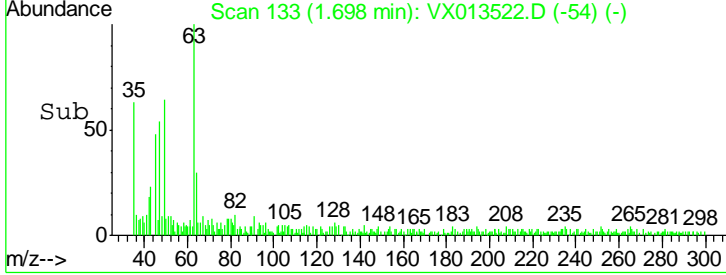
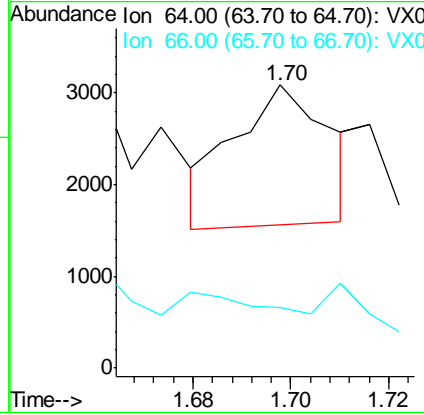
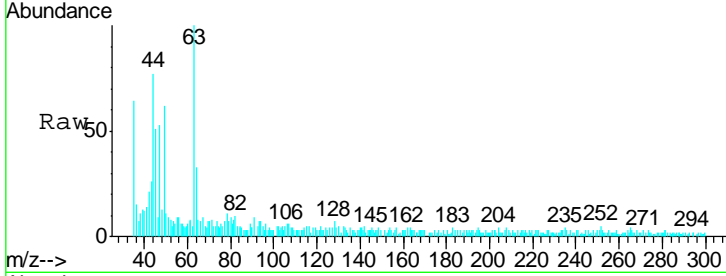




#6
 Chloroethane
 Concen: 0.404 ug/l
 RT: 1.70 min Scan# 133
 Delta R.T. -0.02 min
 Lab File: VX013522.D
 Acq: 22 Nov 2019 10:45

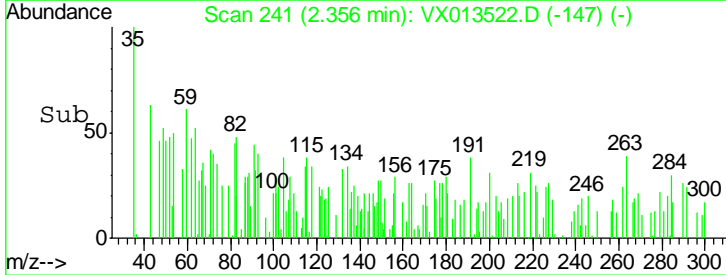
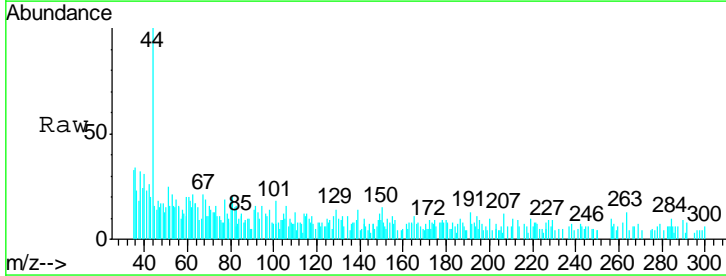
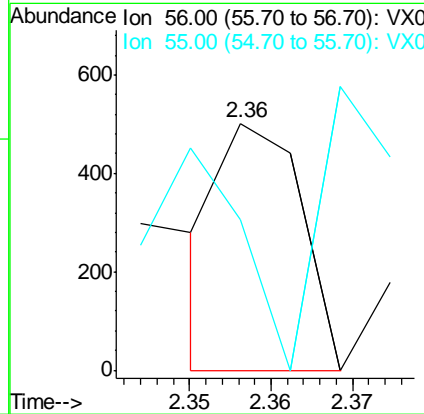
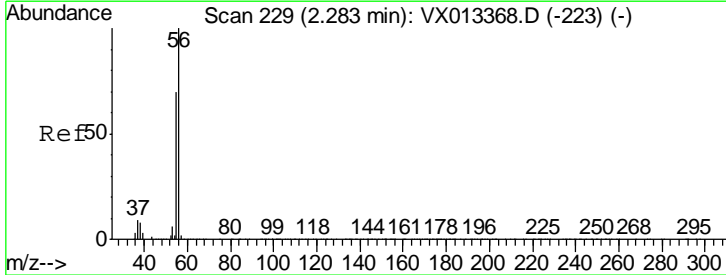
Instrument :
 MSVOA_X
ClientSampled :
 VX1122WBL01

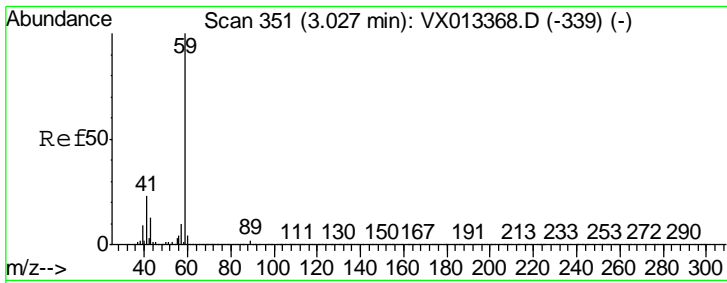
Tgt Ion: 64 Resp: 2062
 Ion Ratio Lower Upper
 64 100
 66 0.0 25.5 38.3#



#13
 Acrolein
 Concen: 0.300 ug/l
 RT: 2.36 min Scan# 241
 Delta R.T. 0.07 min
 Lab File: VX013522.D
 Acq: 22 Nov 2019 10:45

Tgt Ion: 56 Resp: 345
 Ion Ratio Lower Upper
 56 100
 55 80.3 55.8 83.8

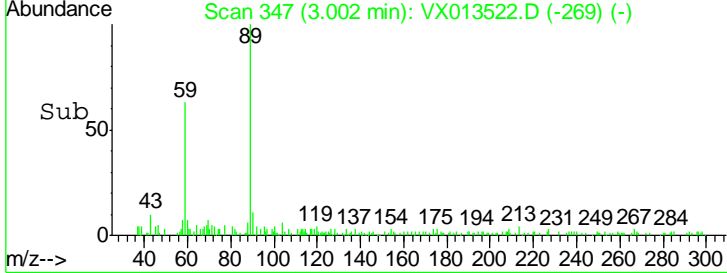
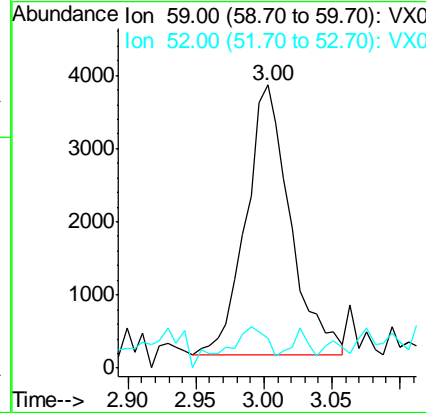
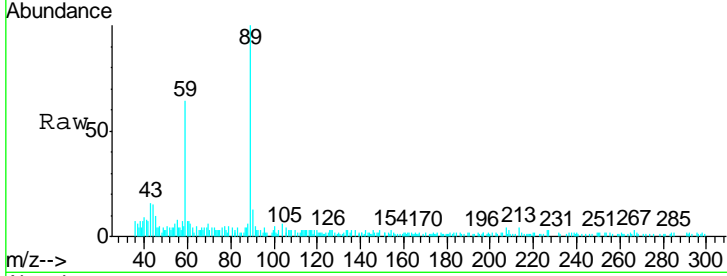




#23
 tert-Butyl Alcohol
 Concen: 4.364 ug/l
 RT: 3.00 min Scan# 347
 Delta R.T. -0.02 min
 Lab File: VX013522.D
 Acq: 22 Nov 2019 10:45

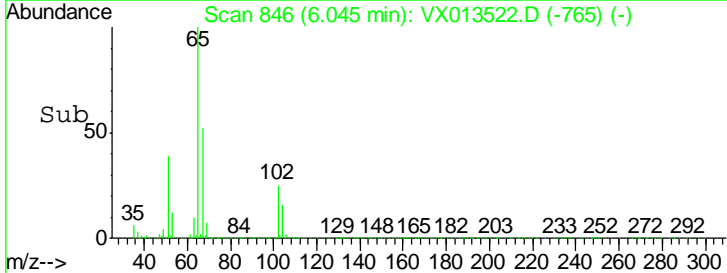
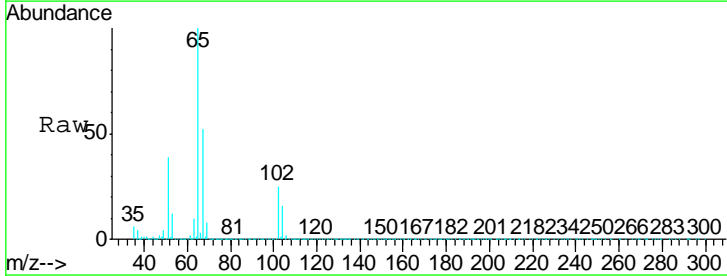
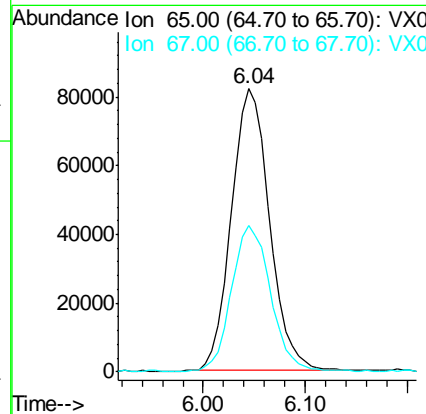
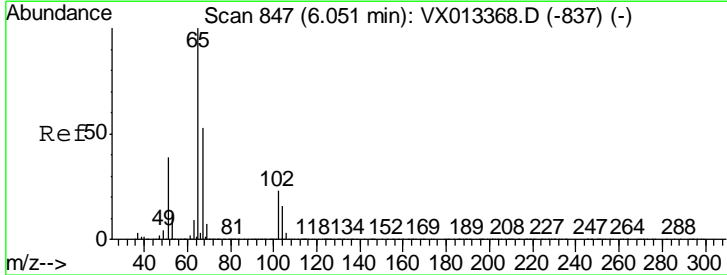
Instrument :
 MSVOA_X
 ClientSampled :
 VX1122WBL01

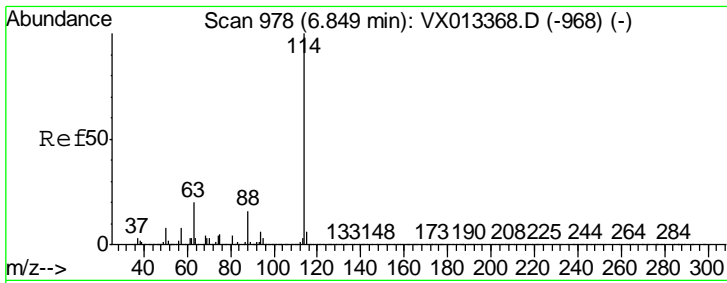
Tgt Ion: 59 Resp: 8373
 Ion Ratio Lower Upper
 59 100
 52 6.6 0.1 0.1#



#27
 1,2-Dichloroethane-d4
 Concen: 28.671 ug/l
 RT: 6.04 min Scan# 846
 Delta R.T. -0.01 min
 Lab File: VX013522.D
 Acq: 22 Nov 2019 10:45

Tgt Ion: 65 Resp: 212081
 Ion Ratio Lower Upper
 65 100
 67 53.3 41.0 61.6

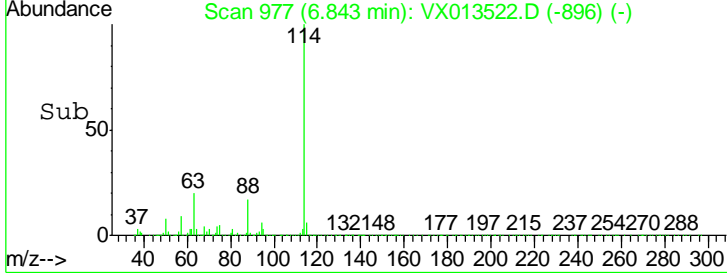
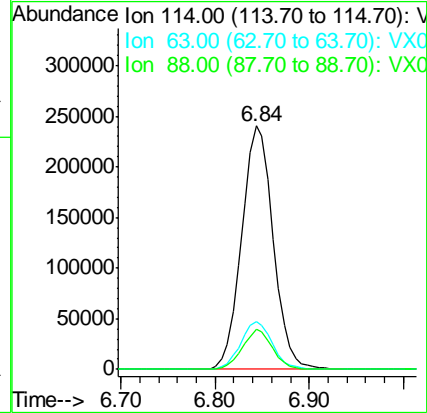
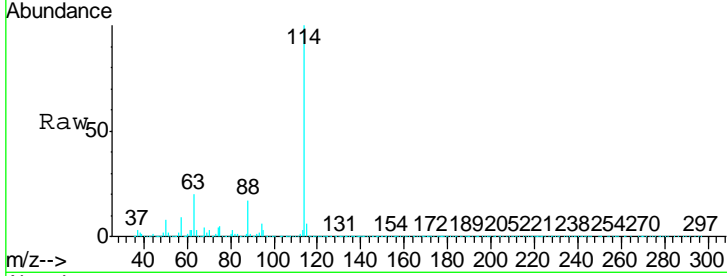




#28
 1,4-Difluorobenzene
 Concen: 30.000 ug/l
 RT: 6.84 min Scan# 977
 Delta R.T. -0.01 min
 Lab File: VX013522.D
 Acq: 22 Nov 2019 10:45

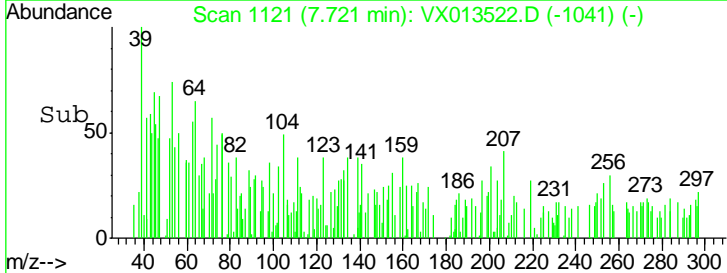
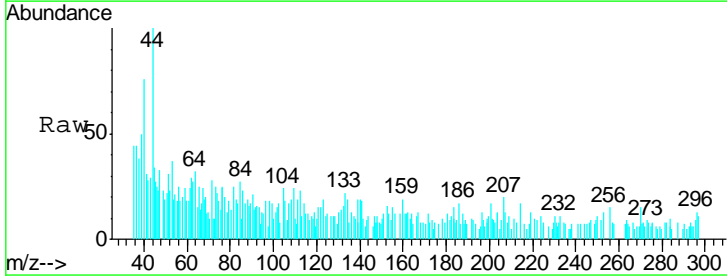
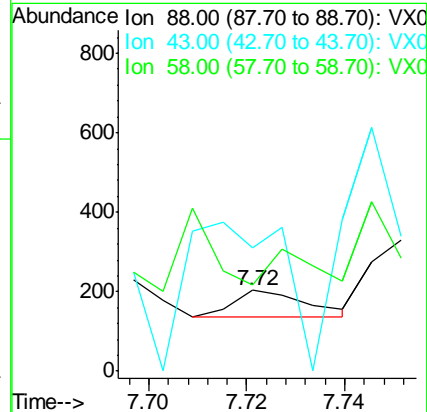
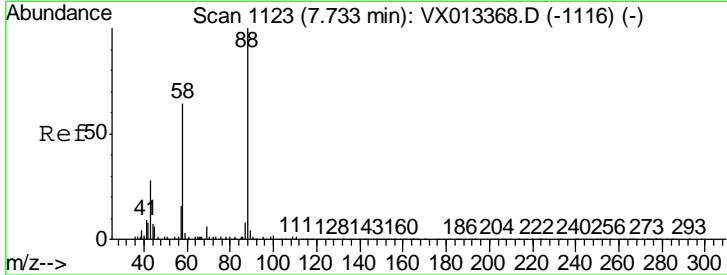
Instrument :
 MSVOA_X
ClientSampled :
 VX1122WBL01

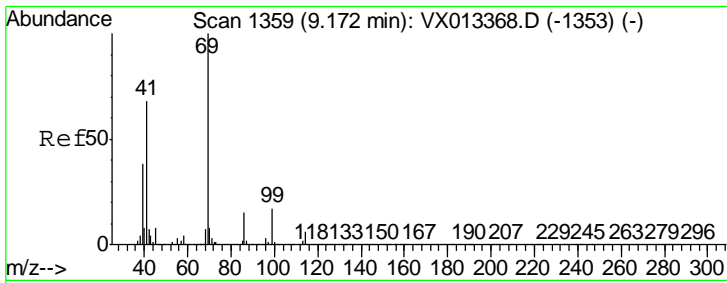
Tgt Ion	Resp	Lower	Upper
114	100		
63	19.6	16.1	24.1
88	15.4	12.3	18.5



#45
 1,4-Dioxane
 Concen: 0.370 ug/l
 RT: 7.72 min Scan# 1121
 Delta R.T. -0.01 min
 Lab File: VX013522.D
 Acq: 22 Nov 2019 10:45

Tgt Ion	Resp	Lower	Upper
88	100		
43	0.0	26.1	39.1#
58	125.0	55.8	83.8#

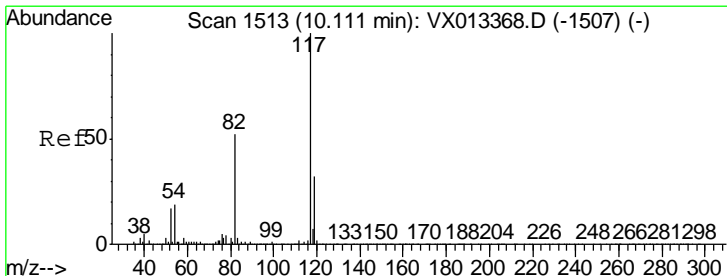
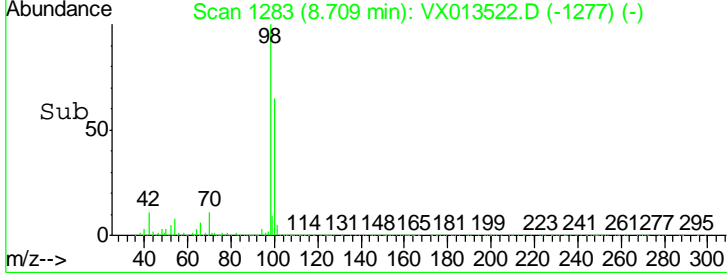
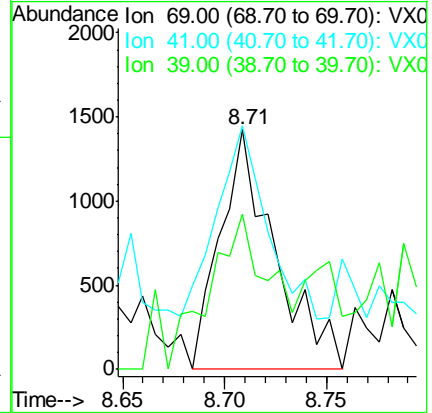
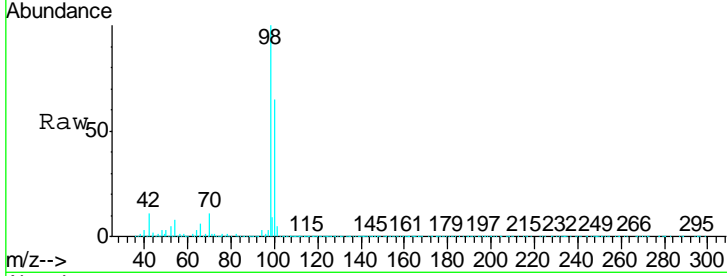




#51
 Ethyl methacrylate
 Concen: 0.243 ug/l
 RT: 8.71 min Scan# 1283
 Delta R.T. -0.46 min
 Lab File: VX013522.D
 Acq: 22 Nov 2019 10:45

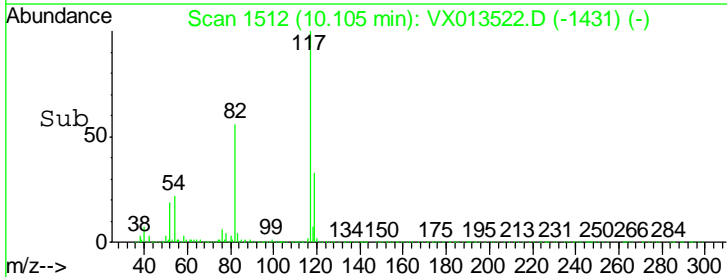
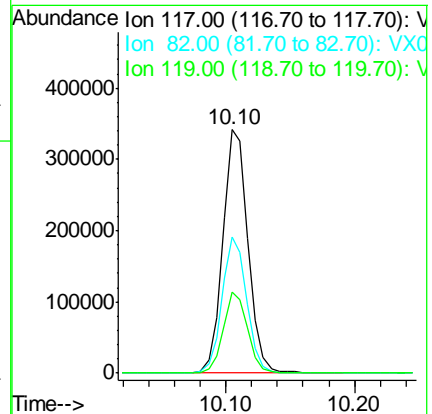
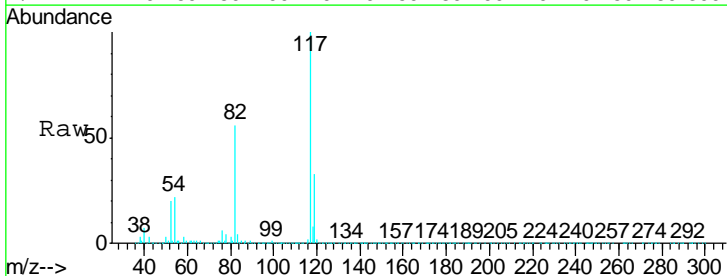
Instrument :
 MSVOA_X
 ClientSampled :
 VX1122WBL01

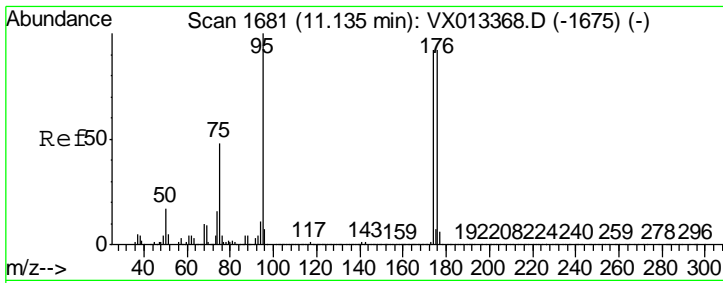
Tgt Ion	Resp	Lower	Upper
69	100		
41	66.4	33.9	101.6
39	42.3	18.8	56.4



#57
 Chlorobenzene-d5
 Concen: 30.000 ug/l
 RT: 10.10 min Scan# 1512
 Delta R.T. -0.01 min
 Lab File: VX013522.D
 Acq: 22 Nov 2019 10:45

Tgt Ion	Resp	Lower	Upper
117	100		
82	54.6	43.7	65.5
119	32.1	25.5	38.3

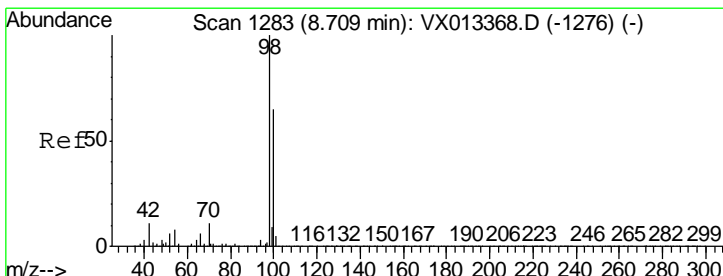
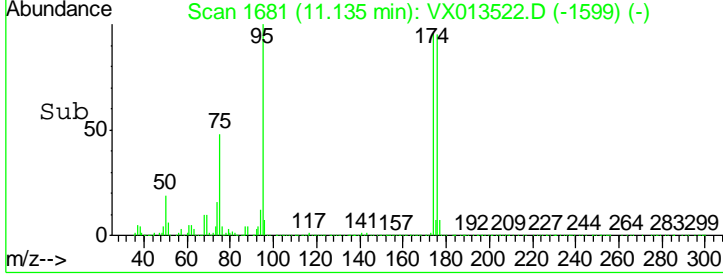
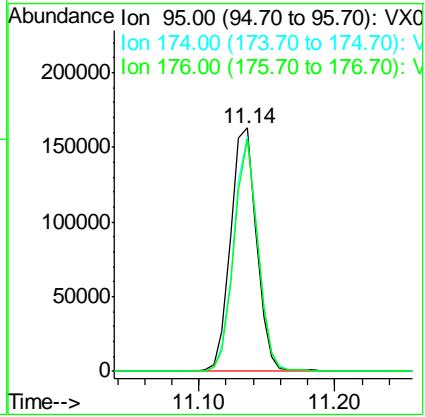
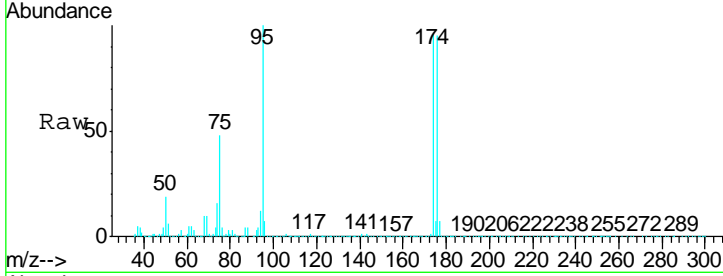




#60
 4-Bromofluorobenzene
 Concen: 28.577 ug/l
 RT: 11.14 min Scan# 1681
 Delta R.T. -0.00 min
 Lab File: VX013522.D
 Acq: 22 Nov 2019 10:45

Instrument : MSVOA_X
 Client Sampled : VX1122WBL01

Tgt Ion	Resp	Lower	Upper
95	216225		
174	90.1	70.2	105.2
176	88.2	68.3	102.5



#63
 Toluene-d8
 Concen: 30.406 ug/l
 RT: 8.71 min Scan# 1283
 Delta R.T. -0.00 min
 Lab File: VX013522.D
 Acq: 22 Nov 2019 10:45

Tgt Ion	Resp	Lower	Upper
98	647280		
100	65.4	52.5	78.7

