

Data Path : Z:\VOASRV\HPCHEM1\MSVOA X\DATA\VX112219\
 Data File : VX013569.D
 Acq On : 23 Nov 2019 05:56
 Operator : JC/SP
 Sample : K5968-09 50X
 Misc : 5.0mL/MSVOA X/WATER
 ALS Vial : 53 Sample Multiplier: 1

Instrument :
 MSVOA_X
 ClientSampleId :
 MH-121.5T-20191121

Quant Time: Nov 25 00:36:23 2019
 Quant Method : Z:\VOASRV\HPCHEM1\MSVOA_X\METHOD\82X103119W.M
 Quant Title : SW846 8260
 QLast Update : Sat Nov 02 07:06:38 2019
 Response via : Initial Calibration

Internal Standards	R.T.	QIon	Response	Conc	Units	Dev(Min)
1) Pentafluorobenzene	5.65	168	633276	50.00	ug/l	0.00
34) 1,4-Difluorobenzene	6.85	114	1043088	50.00	ug/l	0.00
63) Chlorobenzene-d5	10.11	117	938597	50.00	ug/l	0.00
72) 1,4-Dichlorobenzene-d4	12.07	152	428984	50.00	ug/l	0.00

System Monitoring Compounds

33) 1,2-Dichloroethane-d4	6.05	65	383723	51.15	ug/l	0.00
Spiked Amount	50.000		Recovery	=	102.30%	
35) Dibromofluoromethane	5.48	113	313598	47.93	ug/l	0.00
Spiked Amount	50.000		Recovery	=	95.86%	
50) Toluene-d8	8.71	98	1242716	50.39	ug/l	0.00
Spiked Amount	50.000		Recovery	=	100.78%	
62) 4-Bromofluorobenzene	11.14	95	419644	47.14	ug/l	0.00
Spiked Amount	50.000		Recovery	=	94.28%	

Target Compounds

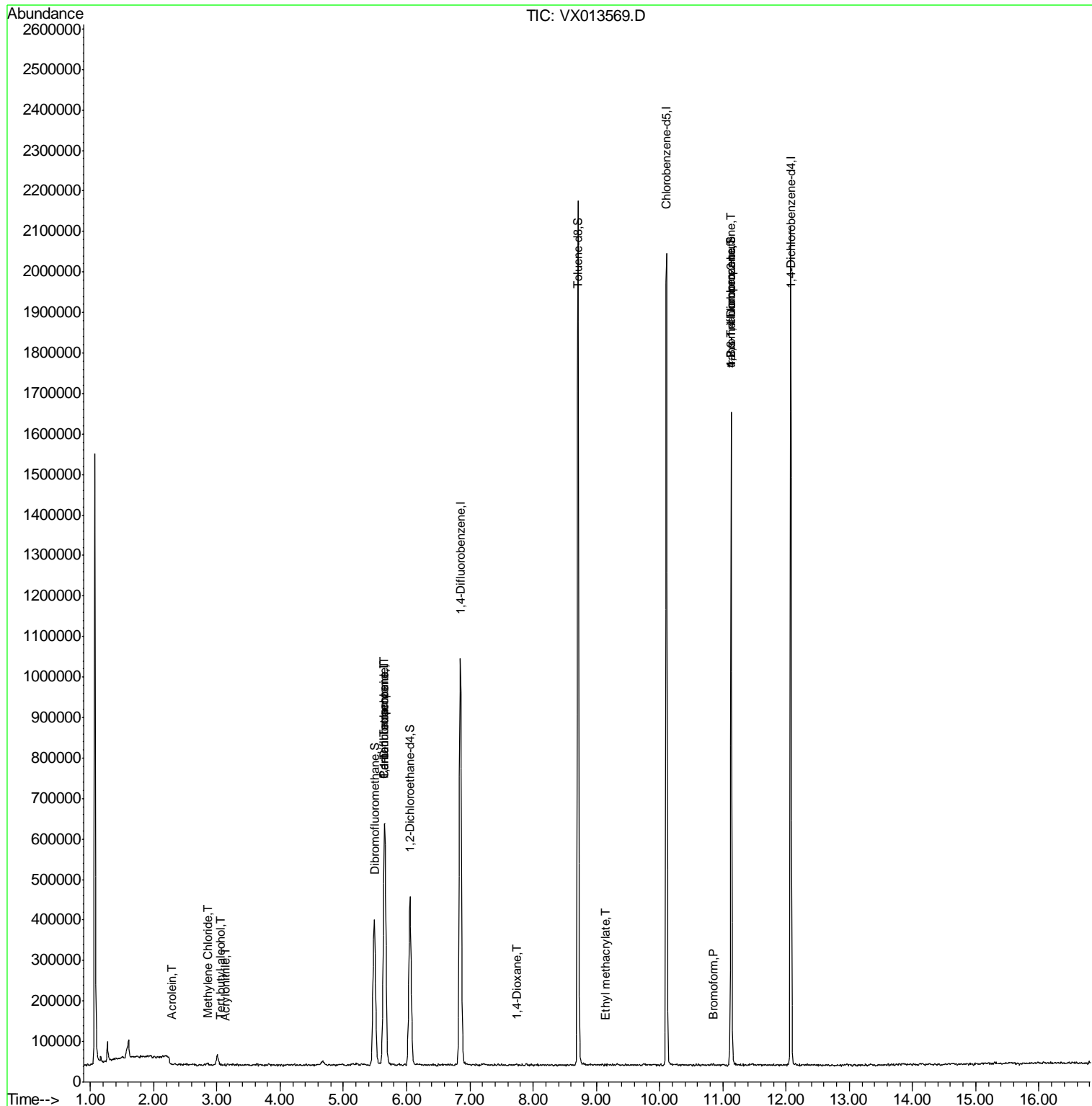
					Qvalue	
6) Chloroethane	1.74	64	1744	Below Cal	#	43
11) Tert butyl alcohol	3.06	59	843	0.426	ug/l #	1
13) Acrolein	2.28	56	726	0.677	ug/l #	70
15) Acrylonitrile	3.14	53	1014	0.275	ug/l #	39
20) Methylene Chloride	2.85	84	3079	0.445	ug/l #	46
36) 1,1-Dichloropropene	5.65	75	42297	4.727	ug/l #	51
38) Carbon Tetrachloride	5.65	117	55983	6.398	ug/l #	16
49) 1,4-Dioxane	7.73	88	400	2.032	ug/l #	1
56) Ethyl methacrylate	9.15	69	300	1.587	ug/l #	22
71) Bromoform	10.85	173	169	3.227	ug/l #	27
76) 1,2,3-Trichloropropane	11.13	75	201995	23.183	ug/l #	33
81) trans-1,4-Dichloro-2-buten	11.13	75	201995	59.671	ug/l #	10

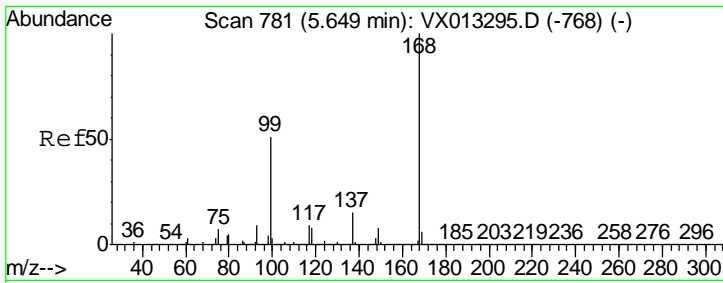
(#) = qualifier out of range (m) = manual integration (+) = signals summed

Data Path : Z:\VOASRV\HPCHEM1\MSVOA X\DATA\VX112219\
 Data File : VX013569.D
 Acq On : 23 Nov 2019 05:56
 Operator : JC/SP
 Sample : K5968-09 50X
 Misc : 5.0mL/MSVOA X/WATER
 ALS Vial : 53 Sample Multiplier: 1

Instrument :
 MSVOA_X
 ClientSampled :
 MH-121.5T-20191121

Quant Time: Nov 25 00:36:23 2019
 Quant Method : Z:\VOASRV\HPCHEM1\MSVOA_X\METHOD\82X103119W.M
 Quant Title : SW846 8260
 QLast Update : Sat Nov 02 07:06:38 2019
 Response via : Initial Calibration

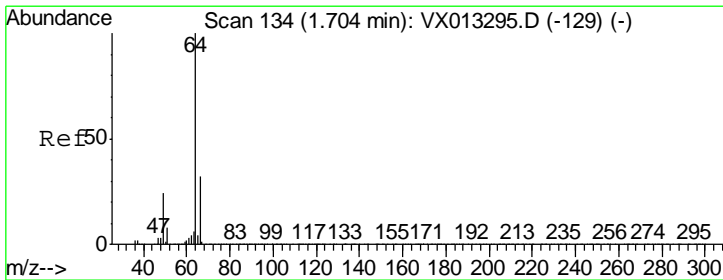
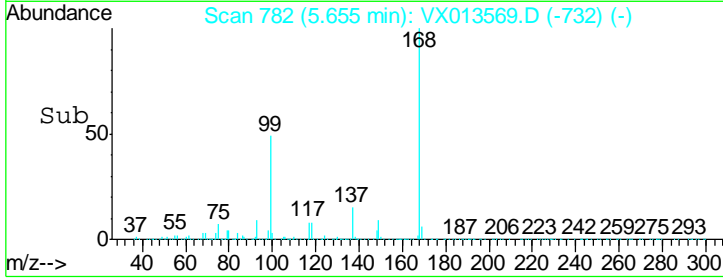
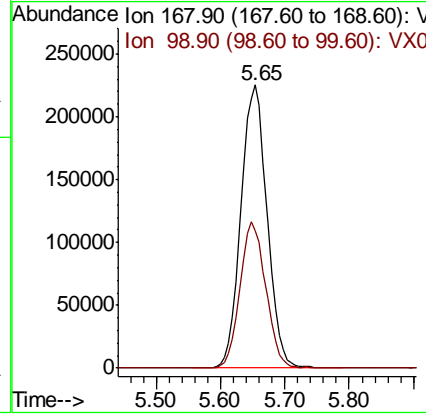
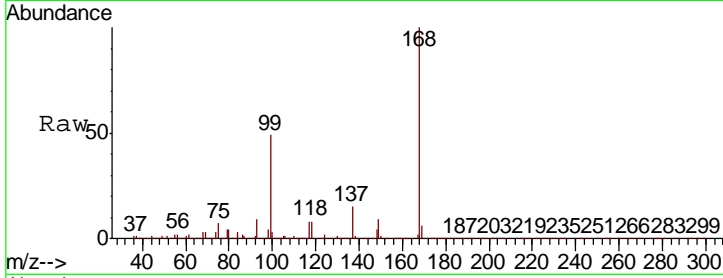




#1
 Pentafluorobenzene
 Concen: 50.000 ug/l
 RT: 5.65 min Scan# 782
 Delta R.T. 0.01 min
 Lab File: VX013569.D
 Acq: 23 Nov 2019 05:56

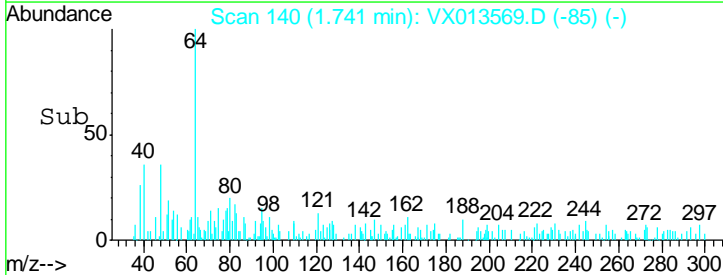
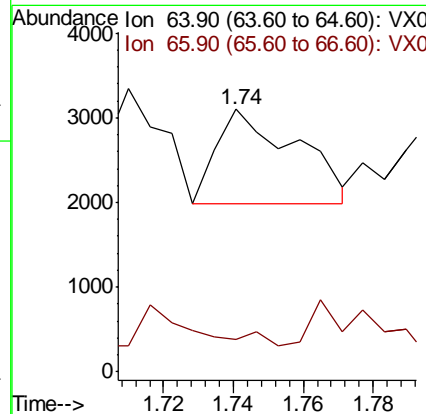
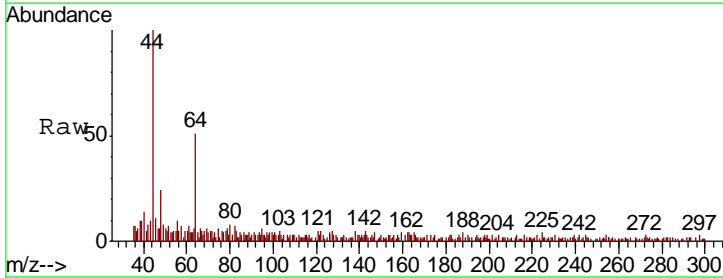
Instrument :
 MSVOA_X
 ClientSampleId :
 MH-121.5T-20191121

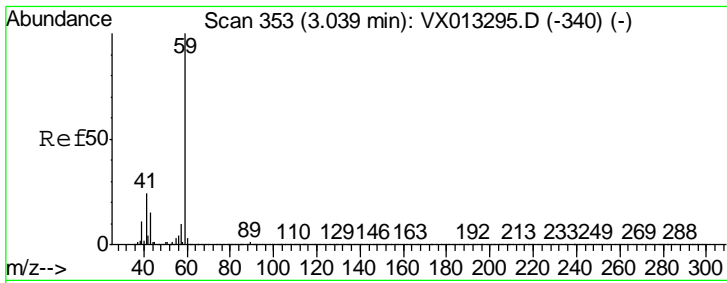
Tgt Ion	Resp	Lower	Upper
168	100		
99	48.6	40.8	61.2



#6
 Chloroethane
 Concen: Below Cal
 RT: 1.74 min Scan# 140
 Delta R.T. 0.04 min
 Lab File: VX013569.D
 Acq: 23 Nov 2019 05:56

Tgt Ion	Resp	Lower	Upper
64	100		
66	0.0	25.6	38.4

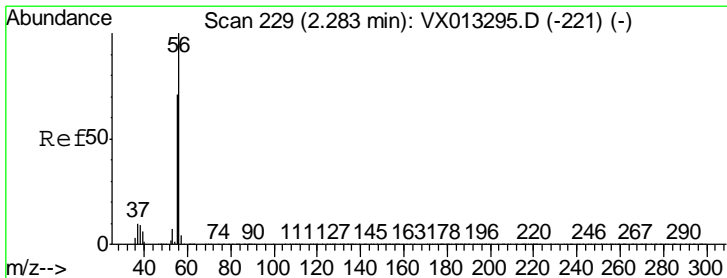
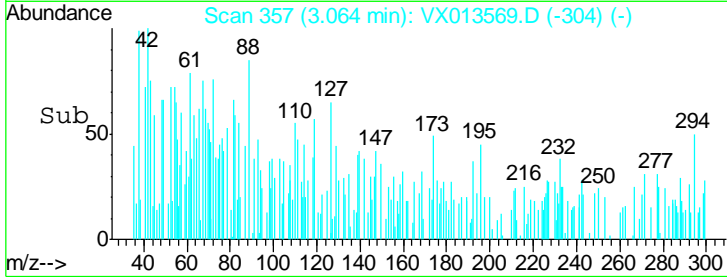
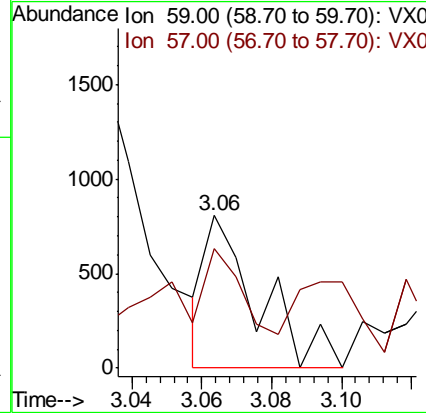
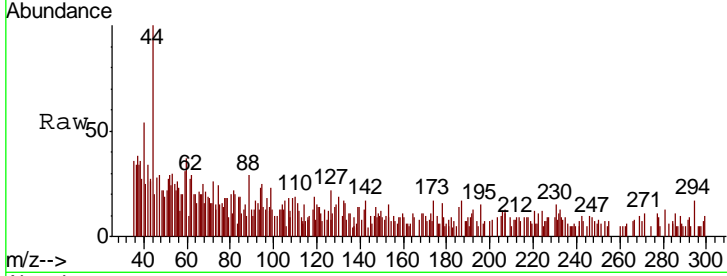




#11
 Tert butyl alcohol
 Concen: 0.426 ug/l
 RT: 3.06 min Scan# 357
 Delta R.T. 0.02 min
 Lab File: VX013569.D
 Acq: 23 Nov 2019 05:56

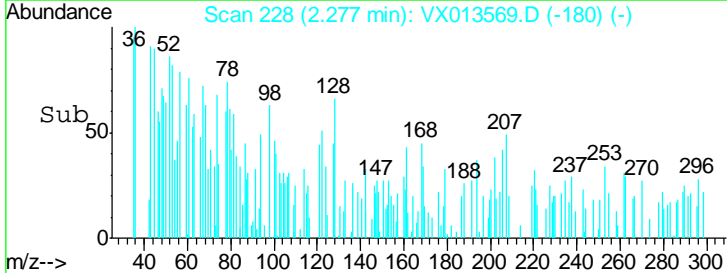
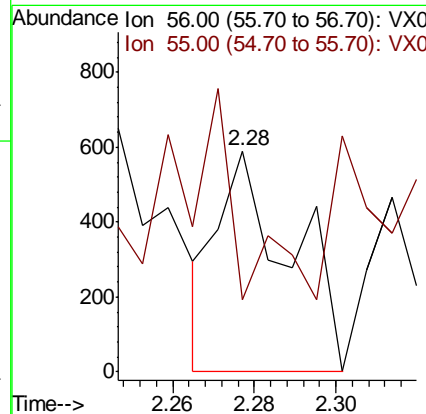
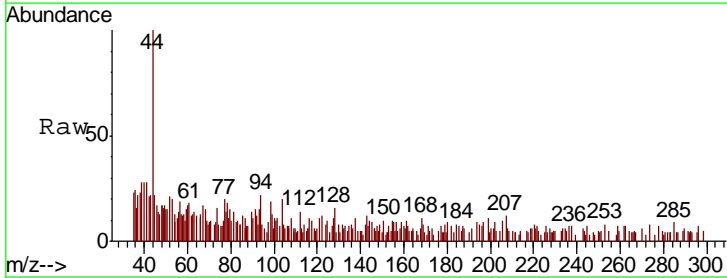
Instrument :
 MSVOA_X
 ClientSampled :
 MH-121.5T-20191121

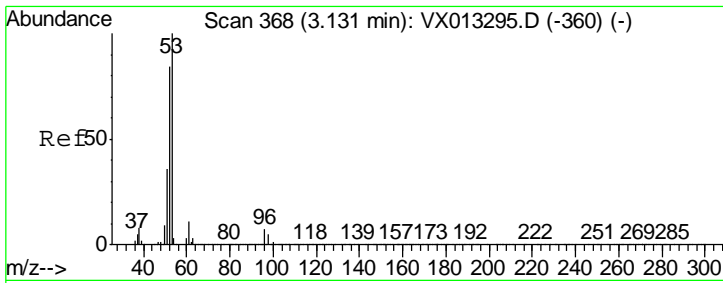
Tgt Ion: 59 Resp: 843
 Ion Ratio Lower Upper
 59 100
 57 57.7 8.0 12.0#



#13
 Acrolein
 Concen: 0.677 ug/l
 RT: 2.28 min Scan# 228
 Delta R.T. -0.01 min
 Lab File: VX013569.D
 Acq: 23 Nov 2019 05:56

Tgt Ion: 56 Resp: 726
 Ion Ratio Lower Upper
 56 100
 55 46.7 57.4 86.0#

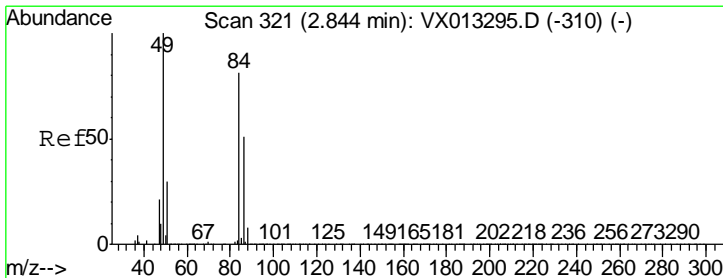
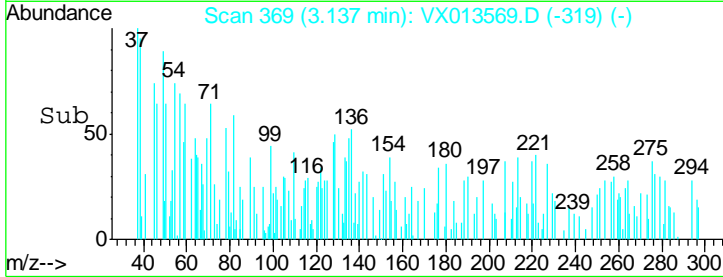
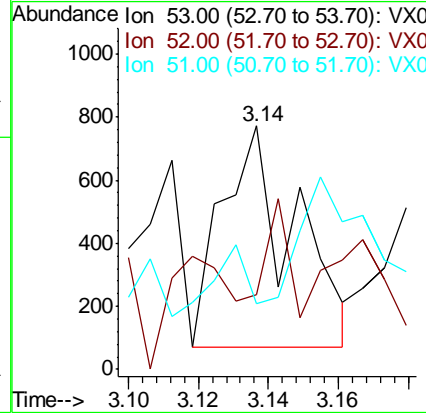
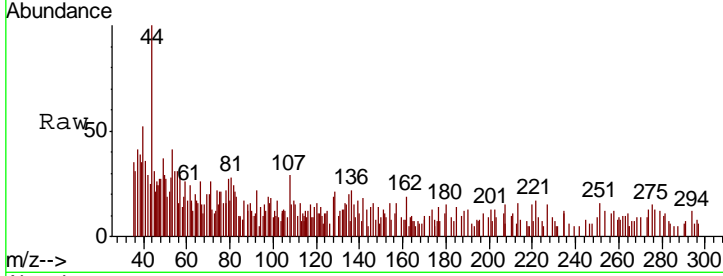




#15
 Acrylonitrile
 Concen: 0.275 ug/l
 RT: 3.14 min Scan# 369
 Delta R.T. 0.01 min
 Lab File: VX013569.D
 Acq: 23 Nov 2019 05:56

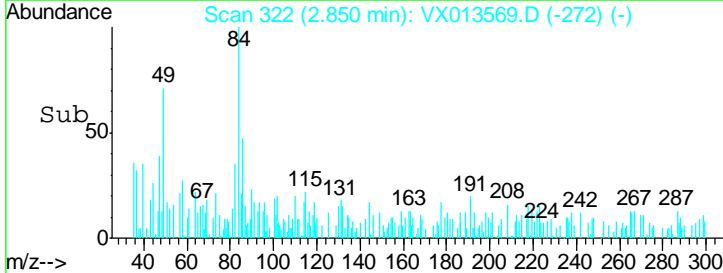
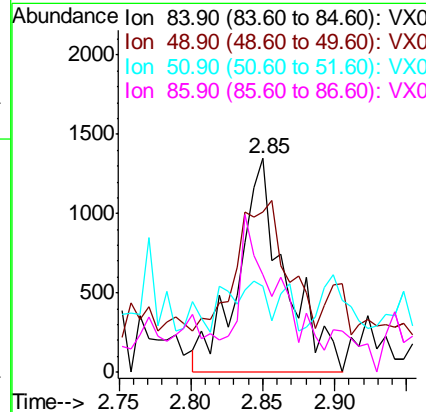
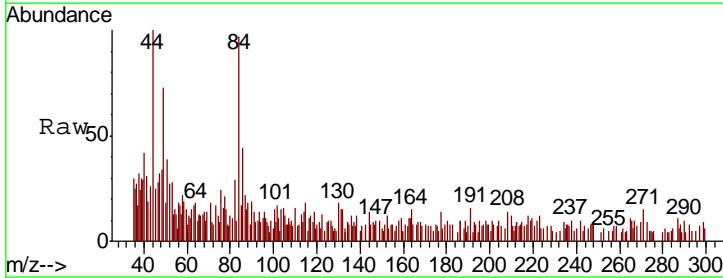
Instrument :
 MSVOA_X
 ClientSampled :
 MH-121.5T-20191121

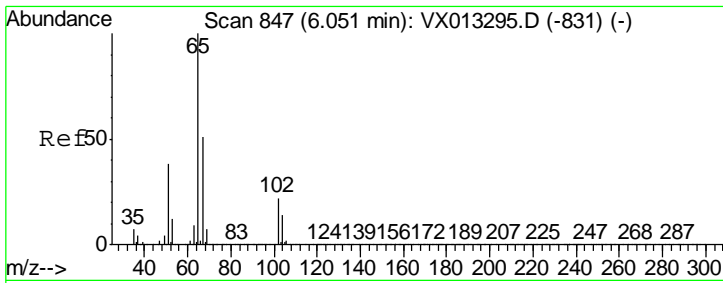
Tgt Ion	Resp	Lower	Upper
53	1014		
52	22.6	67.4	101.0#
51	9.4	29.4	44.2#



#20
 Methylene Chloride
 Concen: 0.445 ug/l
 RT: 2.85 min Scan# 322
 Delta R.T. 0.01 min
 Lab File: VX013569.D
 Acq: 23 Nov 2019 05:56

Tgt Ion	Resp	Lower	Upper
84	3079		
84	100		
49	56.0	98.2	147.4#
51	7.6	29.9	44.9#
86	26.3	49.9	74.9#

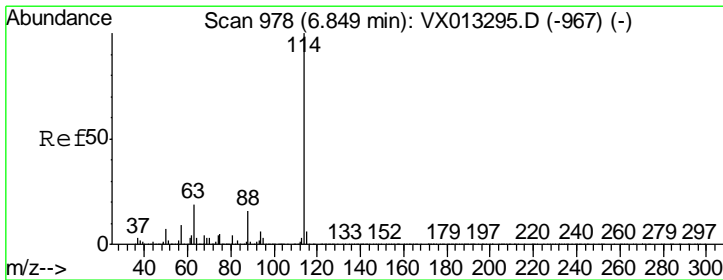
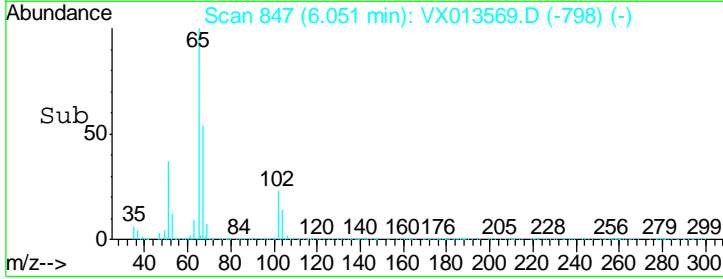
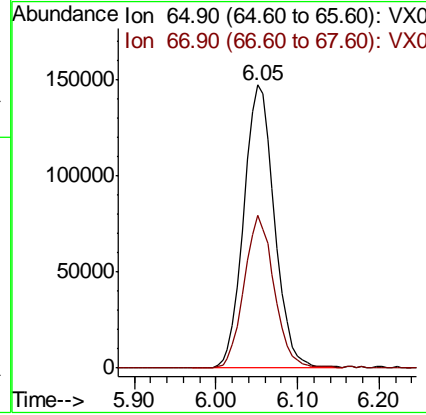
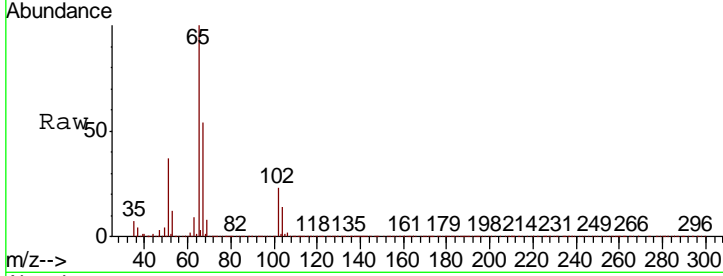




#33
 1,2-Dichloroethane-d4
 Concen: 51.146 ug/l
 RT: 6.05 min Scan# 847
 Delta R.T. -0.00 min
 Lab File: VX013569.D
 Acq: 23 Nov 2019 05:56

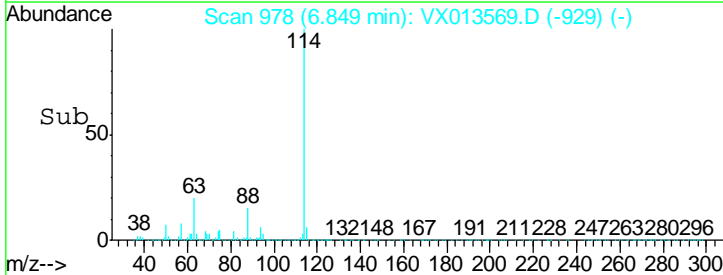
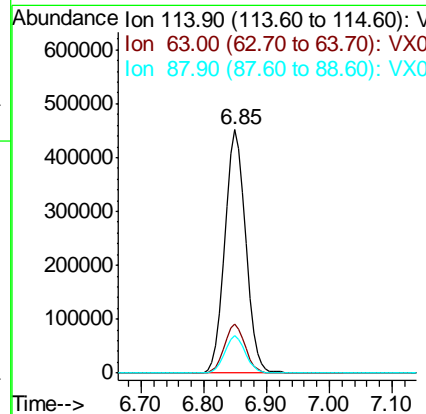
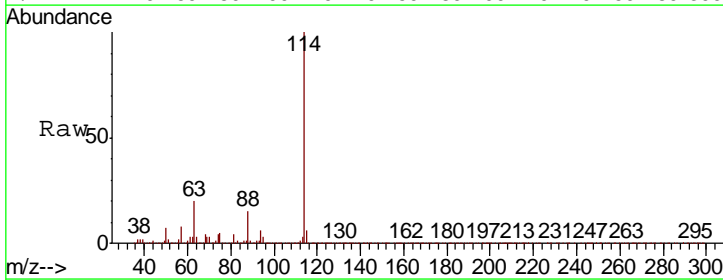
Instrument :
 MSVOA_X
 ClientSampled :
 MH-121.5T-20191121

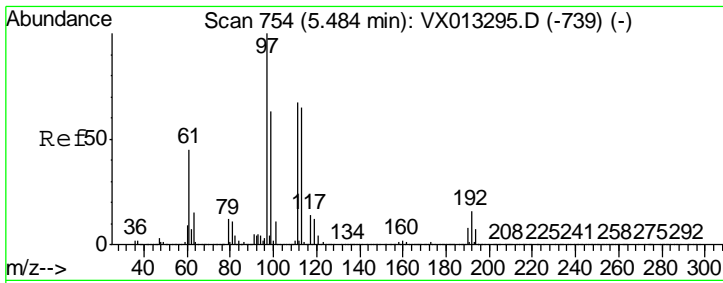
Tgt Ion: 65 Resp: 383723
 Ion Ratio Lower Upper
 65 100
 67 52.7 0.0 104.2



#34
 1,4-Difluorobenzene
 Concen: 50.000 ug/l
 RT: 6.85 min Scan# 978
 Delta R.T. -0.00 min
 Lab File: VX013569.D
 Acq: 23 Nov 2019 05:56

Tgt Ion: 114 Resp: 1043088
 Ion Ratio Lower Upper
 114 100
 63 19.9 0.0 38.4
 88 15.3 0.0 32.2

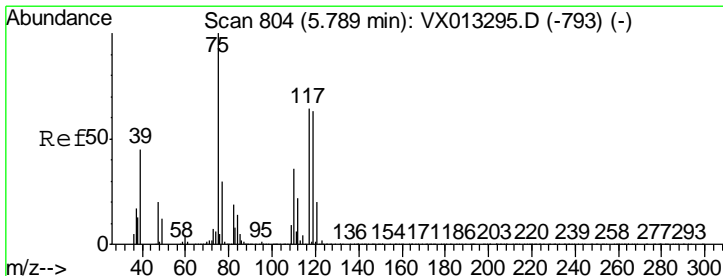
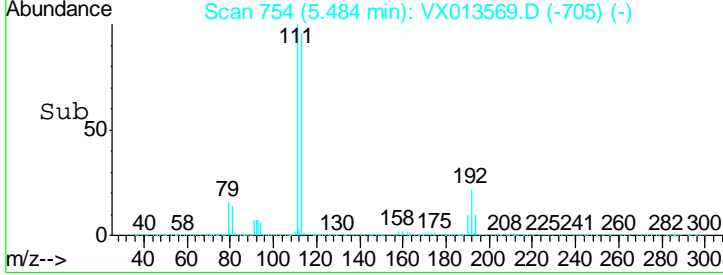
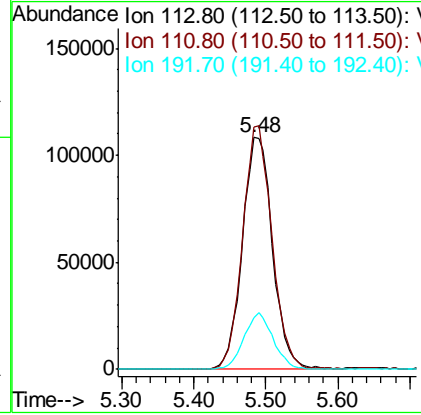
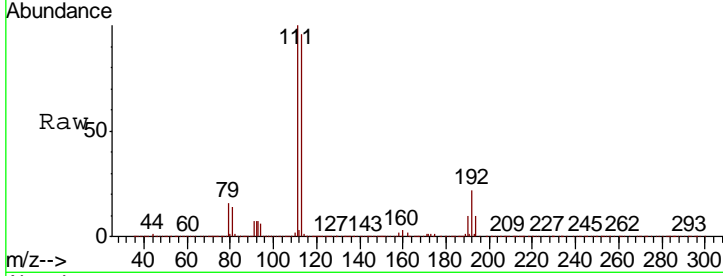




#35
 Dibromofluoromethane
 Concen: 47.933 ug/l
 RT: 5.48 min Scan# 754
 Delta R.T. -0.00 min
 Lab File: VX013569.D
 Acq: 23 Nov 2019 05:56

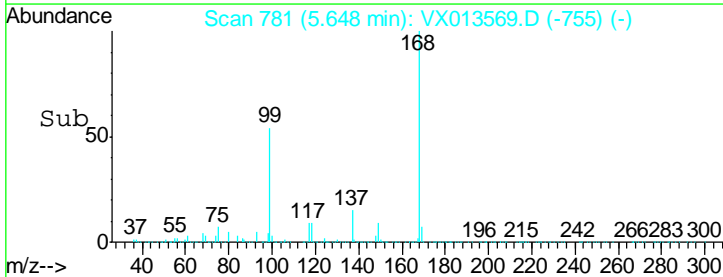
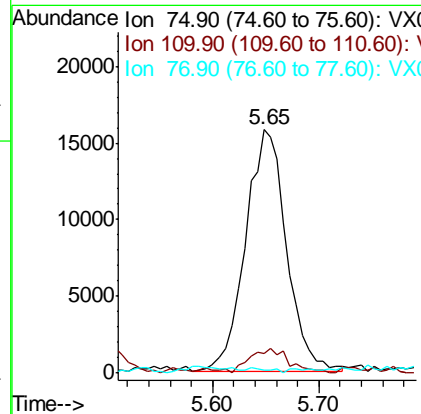
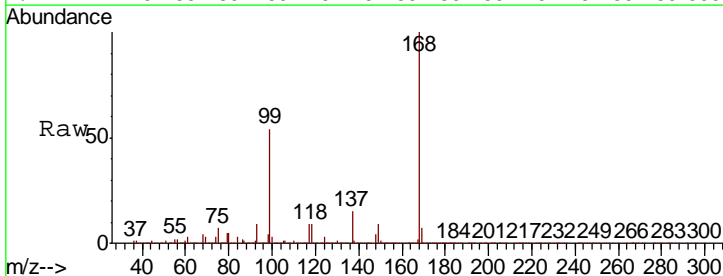
Instrument : MSVOA_X
 ClientSampled : MH-121.5T-20191121

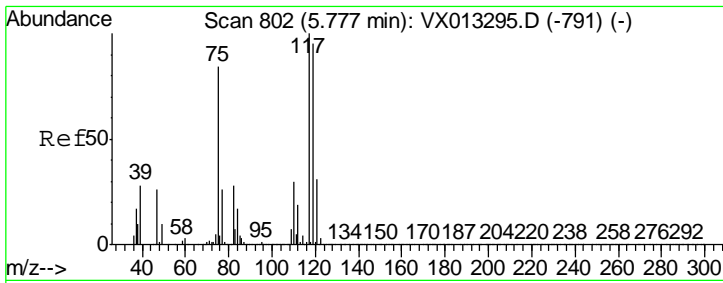
Tgt Ion	Resp	Lower	Upper
113	100		
111	102.5	81.9	122.9
192	23.6	19.1	28.7



#36
 1,1-Dichloropropene
 Concen: 4.727 ug/l
 RT: 5.65 min Scan# 781
 Delta R.T. -0.14 min
 Lab File: VX013569.D
 Acq: 23 Nov 2019 05:56

Tgt Ion	Resp	Lower	Upper
75	100		
110	9.8	18.1	54.1#
77	1.1	25.0	37.4#

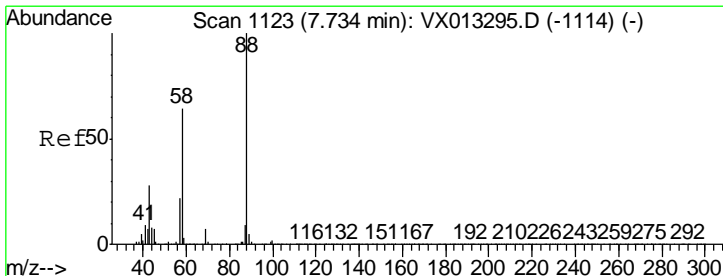
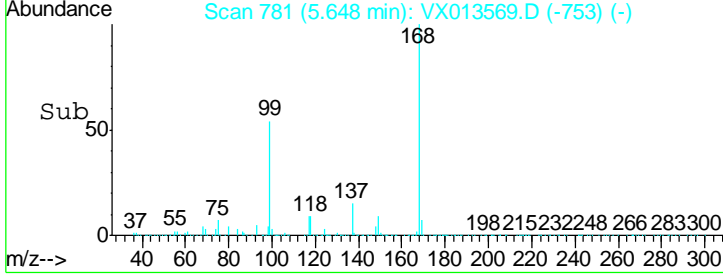
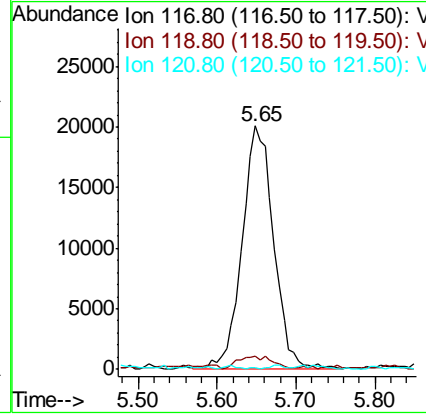
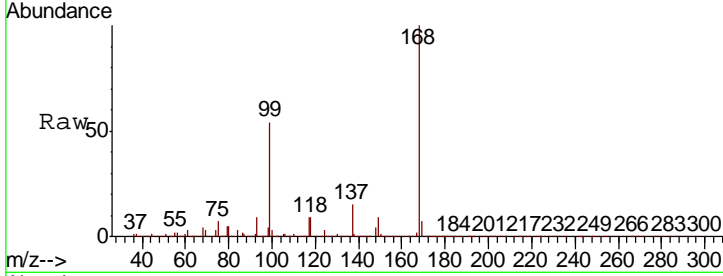




#38
 Carbon Tetrachloride
 Concen: 6.398 ug/l
 RT: 5.65 min Scan# 781
 Delta R.T. -0.13 min
 Lab File: VX013569.D
 Acq: 23 Nov 2019 05:56

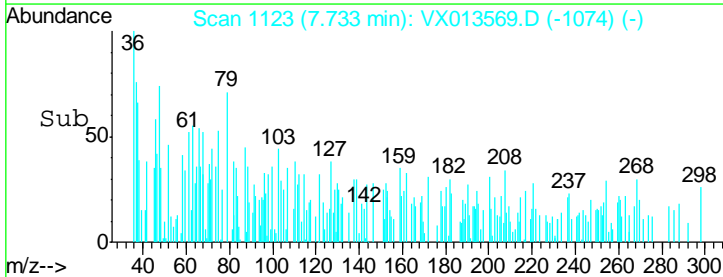
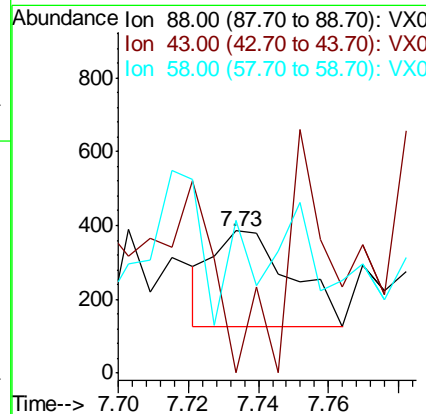
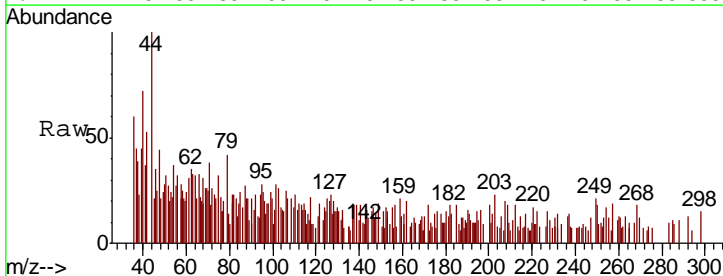
Instrument :
 MSVOA_X
 ClientSampled :
 MH-121.5T-20191121

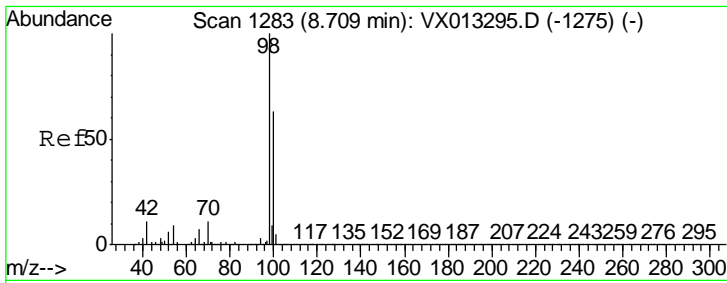
Tgt Ion	Resp	Lower	Upper
117	100		
119	4.3	76.1	114.1#
121	0.8	24.6	37.0#



#49
 1,4-Dioxane
 Concen: 2.032 ug/l
 RT: 7.73 min Scan# 1123
 Delta R.T. -0.00 min
 Lab File: VX013569.D
 Acq: 23 Nov 2019 05:56

Tgt Ion	Resp	Lower	Upper
88	100		
43	136.3	26.6	39.8#
58	0.0	55.0	82.6#

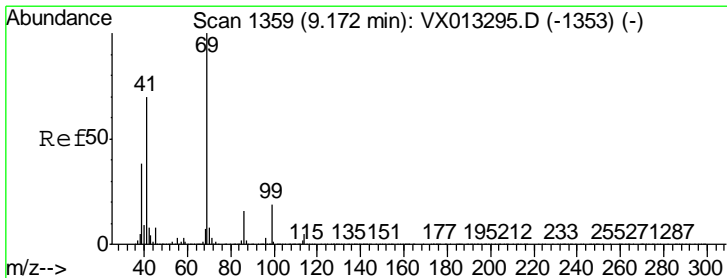
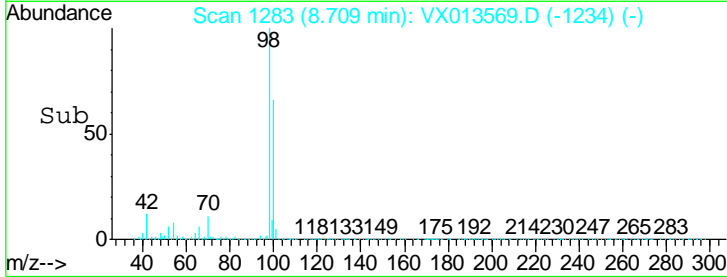
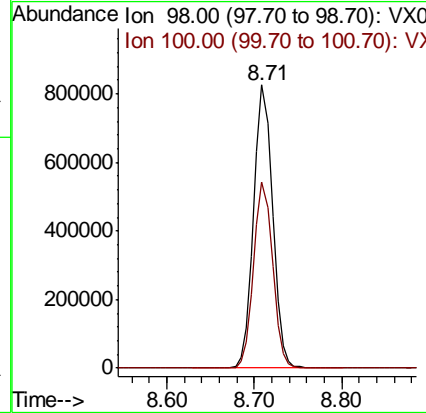
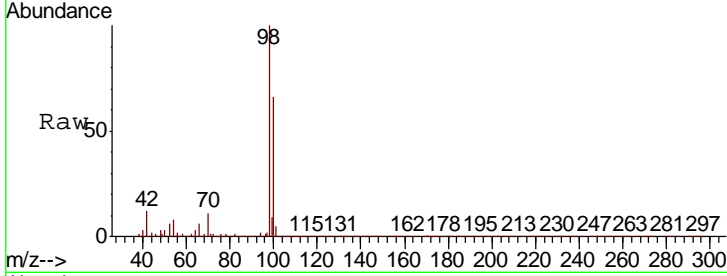




#50
 Toluene-d8
 Concen: 50.386 ug/l
 RT: 8.71 min Scan# 1283
 Delta R.T. -0.00 min
 Lab File: VX013569.D
 Acq: 23 Nov 2019 05:56

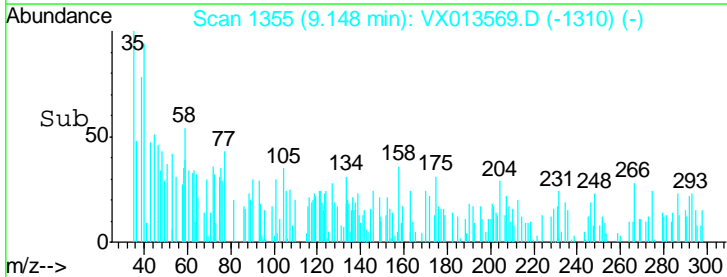
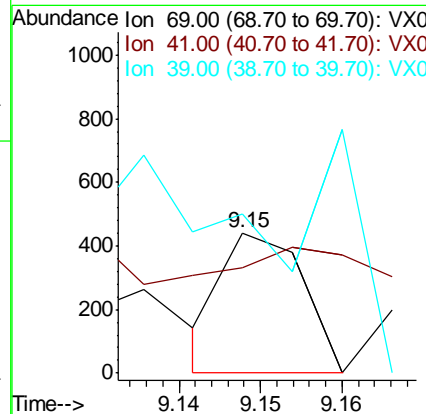
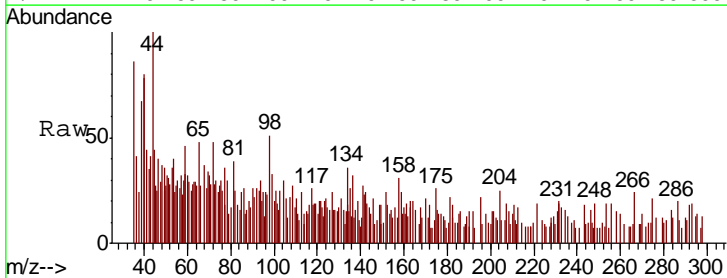
Instrument :
 MSVOA_X
 ClientSampled :
 MH-121.5T-20191121

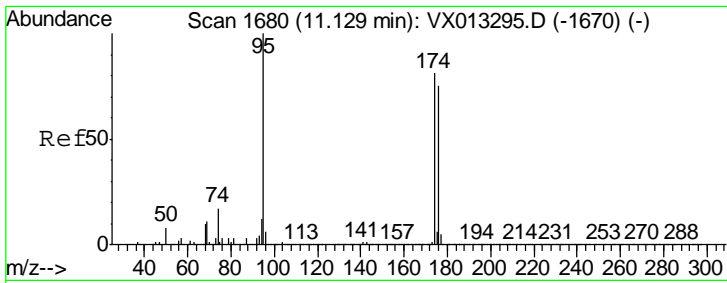
Tgt Ion	Resp	Lower	Upper
98	1242716		
100	65.9	52.2	78.2



#56
 Ethyl methacrylate
 Concen: 1.587 ug/l
 RT: 9.15 min Scan# 1355
 Delta R.T. -0.02 min
 Lab File: VX013569.D
 Acq: 23 Nov 2019 05:56

Tgt Ion	Resp	Lower	Upper
69	300		
41	0.0	56.2	84.2#
39	0.0	31.1	46.7#

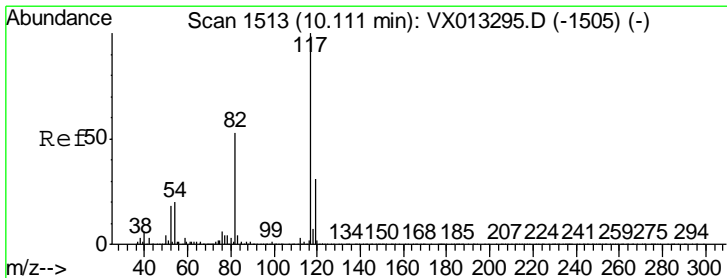
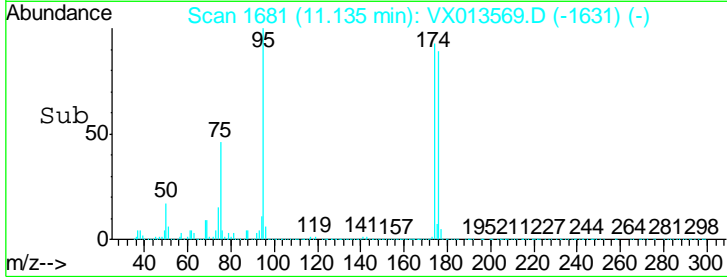
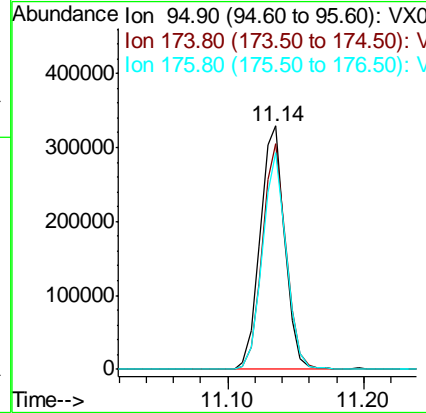
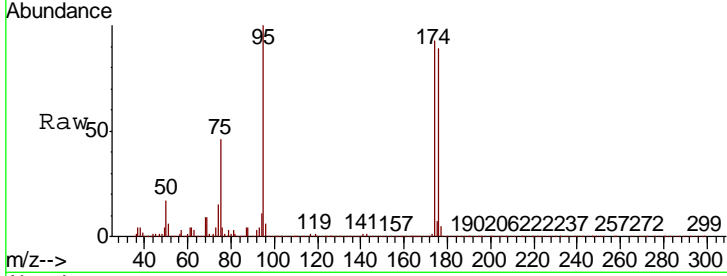




#62
 4-Bromofluorobenzene
 Concen: 47.144 ug/l
 RT: 11.14 min Scan# 1681
 Delta R.T. 0.01 min
 Lab File: VX013569.D
 Acq: 23 Nov 2019 05:56

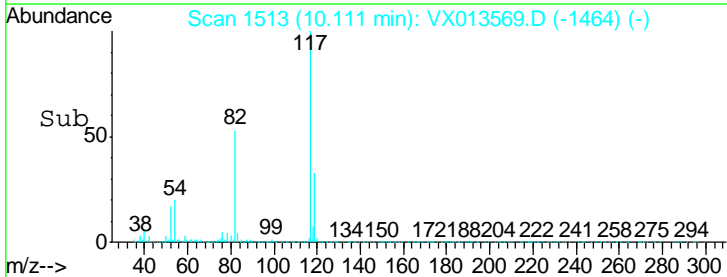
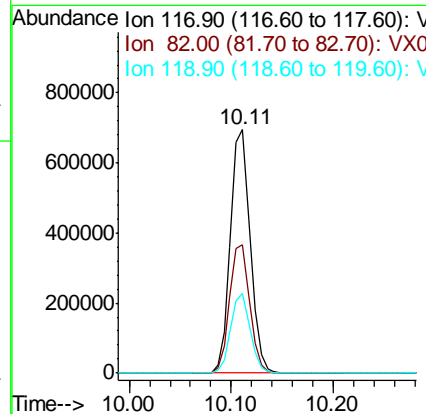
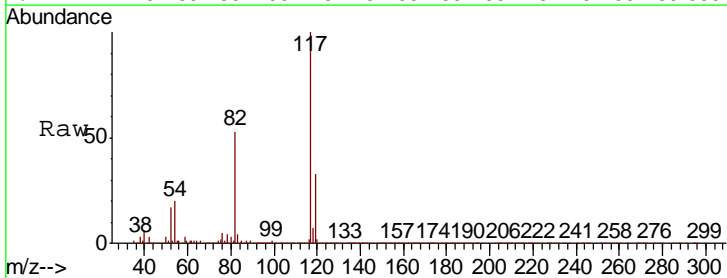
Instrument :
 MSVOA_X
 ClientSampled :
 MH-121.5T-20191121

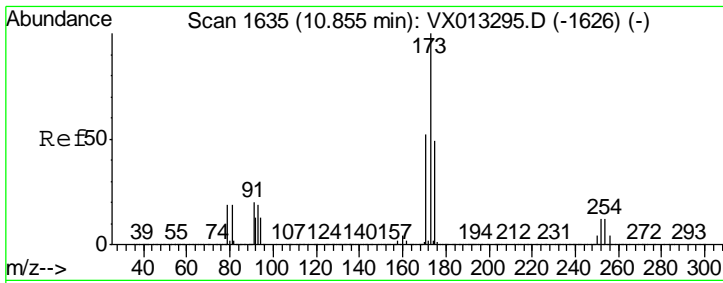
Tgt Ion	Resp	Lower	Upper
95	100		
174	89.5	0.0	179.8
176	86.2	0.0	173.0



#63
 Chlorobenzene-d5
 Concen: 50.000 ug/l
 RT: 10.11 min Scan# 1513
 Delta R.T. -0.00 min
 Lab File: VX013569.D
 Acq: 23 Nov 2019 05:56

Tgt Ion	Resp	Lower	Upper
117	100		
82	52.8	42.6	64.0
119	32.8	24.8	37.2

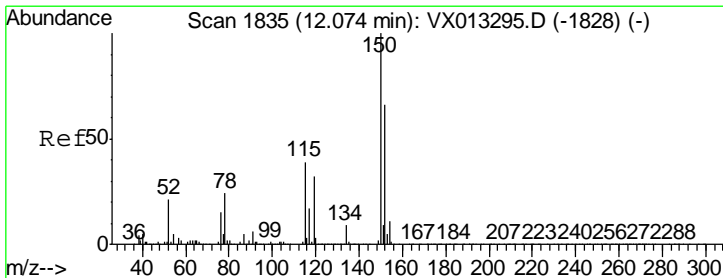
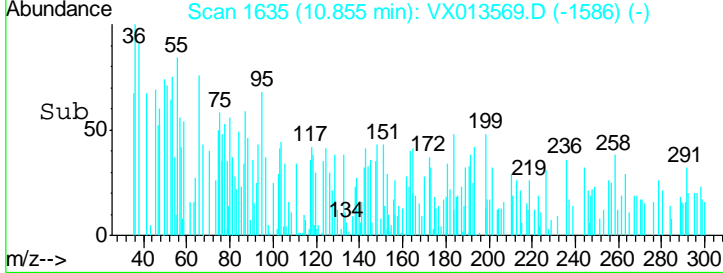
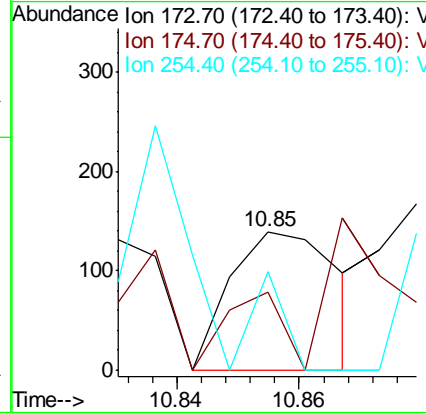
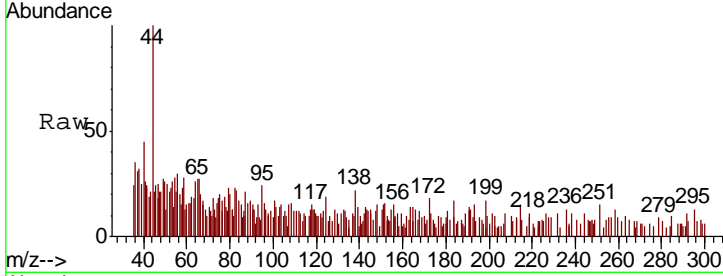




#71
 Bromoform
 Concen: 3.227 ug/l
 RT: 10.85 min Scan# 1635
 Delta R.T. 0.00 min
 Lab File: VX013569.D
 Acq: 23 Nov 2019 05:56

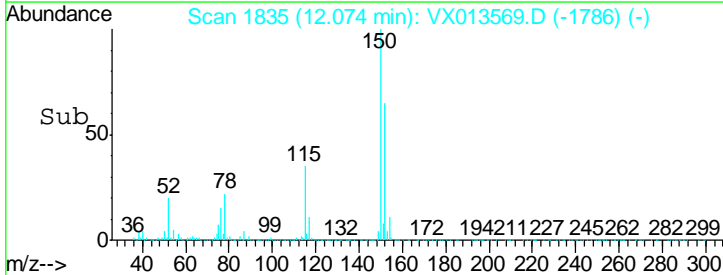
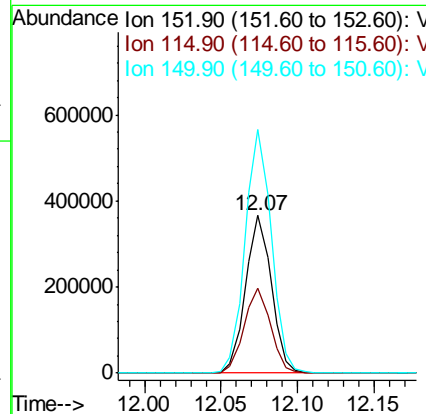
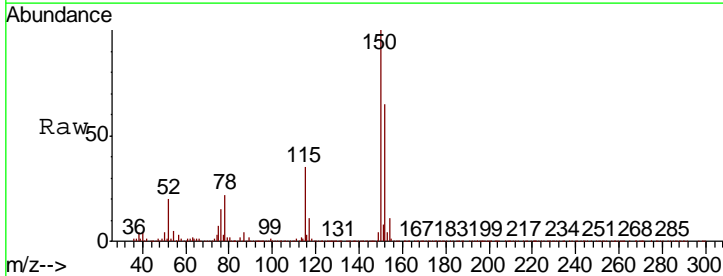
Instrument :
 MSVOA_X
 ClientSampled :
 MH-121.5T-20191121

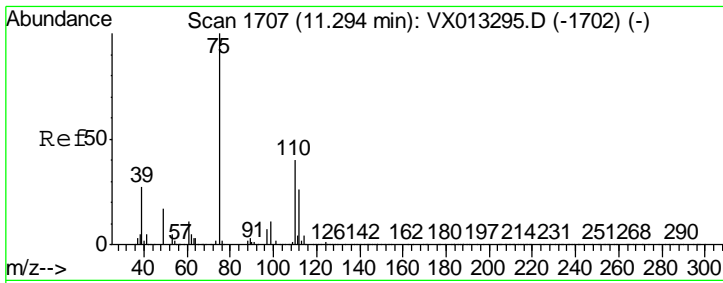
Tgt Ion	Resp	Lower	Upper
173	100		
175	0.0	24.8	74.4#
254	162.7	0.2	0.2#



#72
 1,4-Dichlorobenzene-d4
 Concen: 50.000 ug/l
 RT: 12.07 min Scan# 1835
 Delta R.T. -0.00 min
 Lab File: VX013569.D
 Acq: 23 Nov 2019 05:56

Tgt Ion	Resp	Lower	Upper
152	100		
115	55.1	39.5	118.3
150	156.9	0.0	344.4

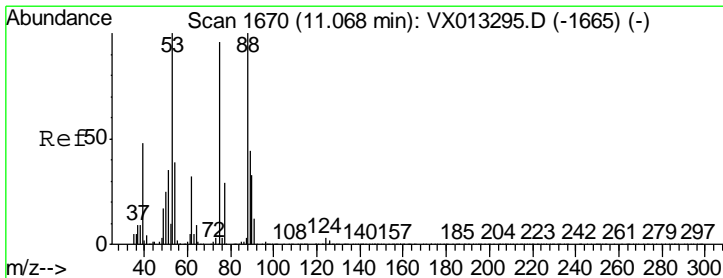
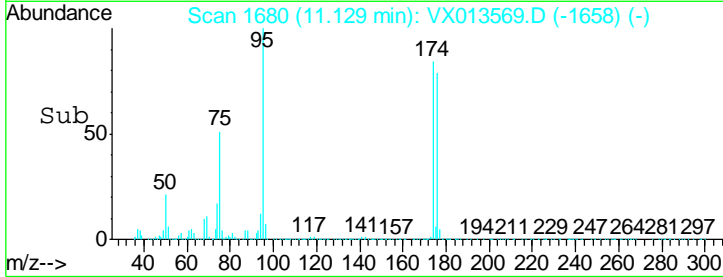
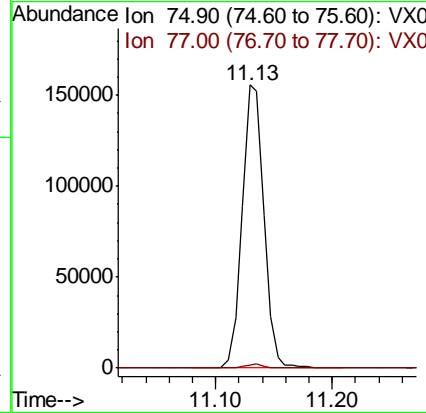
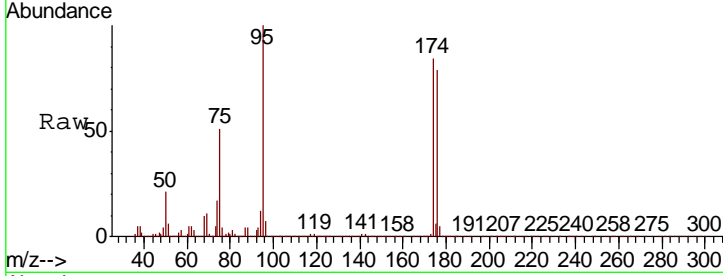




#76
 1,2,3-Trichloropropane
 Concen: 23.183 ug/l
 RT: 11.13 min Scan# 1680
 Delta R.T. -0.16 min
 Lab File: VX013569.D
 Acq: 23 Nov 2019 05:56

Instrument :
 MSVOA_X
 ClientSampled :
 MH-121.5T-20191121

Tgt Ion: 75 Resp: 201995
 Ion Ratio Lower Upper
 75 100
 77 1.2 22.3 66.8#



#81
 trans-1,4-Dichloro-2-butene
 Concen: 59.671 ug/l
 RT: 11.13 min Scan# 1680
 Delta R.T. 0.06 min
 Lab File: VX013569.D
 Acq: 23 Nov 2019 05:56

Tgt Ion: 75 Resp: 201995
 Ion Ratio Lower Upper
 75 100
 53 0.4 81.0 121.6#
 89 0.0 36.0 54.0#

