

Data Path : Z:\voasrv\HPCHEM1\MSVOA_X\Data\VX112224\
 Data File : VX043966.D
 Acq On : 22 Nov 2024 17:39
 Operator : JC/MD
 Sample : P4846-14
 Misc : 5.0mL/MSVOA_X/WATER
 ALS Vial : 18 Sample Multiplier: 1

Instrument :
 MSVOA_X
ClientSampleId :
 FSND-MW-EVAL-02S-20241113

Quant Time: Nov 22 22:27:08 2024
 Quant Method : Z:\voasrv\HPCHEM1\MSVOA_X\Method\82X112124W.M
 Quant Title : SW846 8260
 QLast Update : Fri Nov 22 03:45:52 2024
 Response via : Initial Calibration

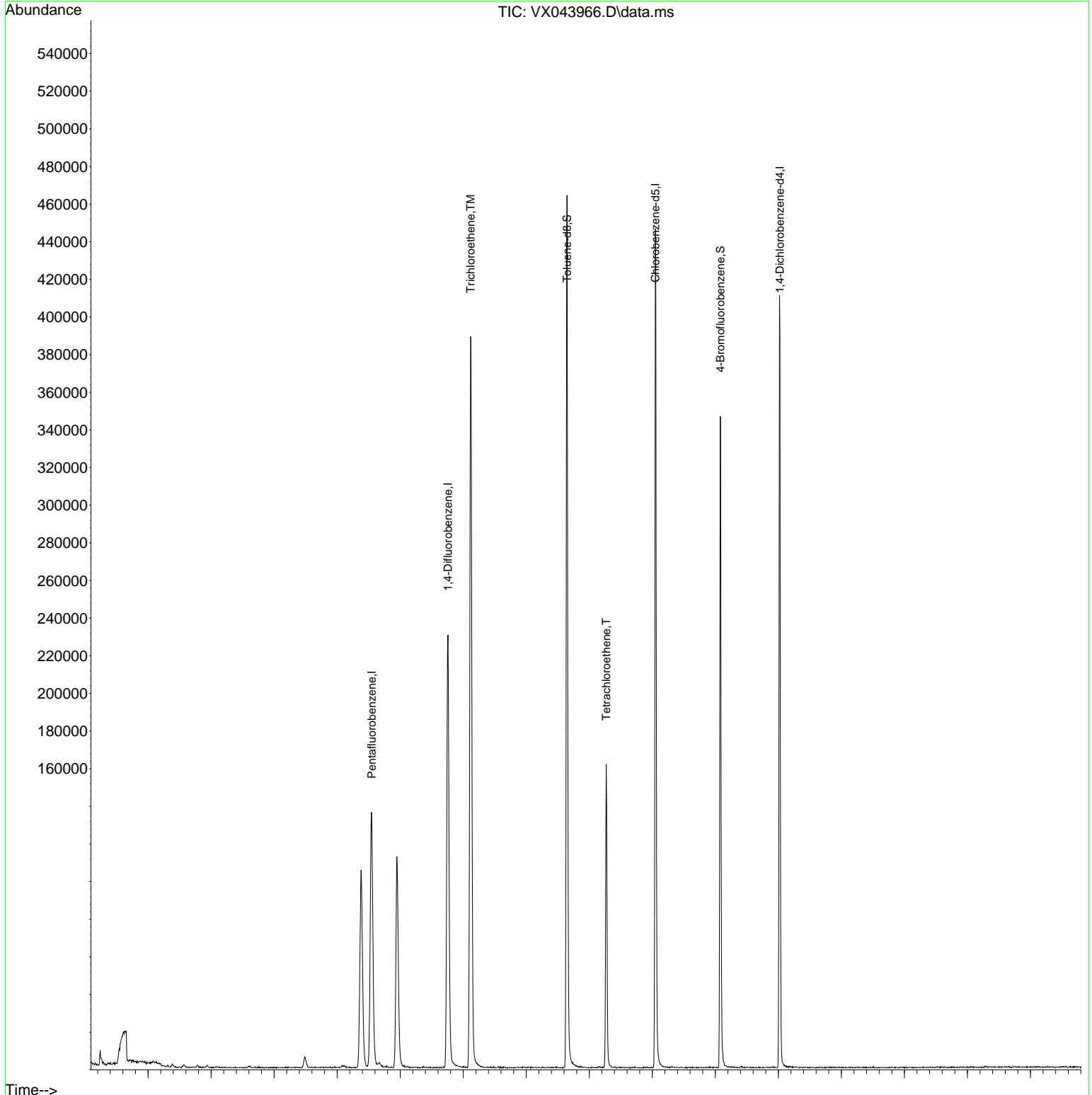
Compound	R.T.	QIon	Response	Conc	Units	Dev(Min)
Internal Standards						
1) Pentafluorobenzene	5.550	168	121293	50.000	ug/l	0.01
34) 1,4-Difluorobenzene	6.757	114	231454	50.000	ug/l	0.00
63) Chlorobenzene-d5	10.049	117	196600	50.000	ug/l	0.00
72) 1,4-Dichlorobenzene-d4	12.024	152	81016	50.000	ug/l	0.00
System Monitoring Compounds						
33) 1,2-Dichloroethane-d4	5.952	65	107041	51.453	ug/l	0.00
Spiked Amount	50.000	Range 74 - 125	Recovery	=	102.900%	
35) Dibromofluoromethane	5.379	113	76784	46.427	ug/l	0.00
Spiked Amount	50.000	Range 75 - 124	Recovery	=	92.860%	
50) Toluene-d8	8.647	98	276241	48.455	ug/l	0.00
Spiked Amount	50.000	Range 86 - 113	Recovery	=	96.900%	
62) 4-Bromofluorobenzene	11.079	95	92396	47.622	ug/l	0.00
Spiked Amount	50.000	Range 77 - 121	Recovery	=	95.240%	
Target Compounds						
3) Chloromethane	1.295	50	607	0.375	ug/l	91
16) Acetone	2.386	43	1530	1.601	ug/l #	87
27) cis-1,2-Dichloroethene	4.489	96	3306	1.853	ug/l	90
32) 1,1,1-Trichloroethane	5.379	97	12125	4.640	ug/l	99
44) Trichloroethene	7.117	130	146202	80.450	ug/l	96
64) Tetrachloroethene	9.269	164	28564	22.034	ug/l	96

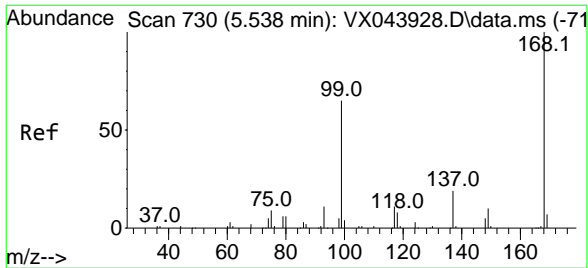
(#) = qualifier out of range (m) = manual integration (+) = signals summed

Data Path : Z:\voasrv\HPCHEM1\MSVOA_X\Data\VX112224\
 Data File : VX043966.D
 Acq On : 22 Nov 2024 17:39
 Operator : JC/MD
 Sample : P4846-14
 Misc : 5.0mL/MSVOA_X/WATER
 ALS Vial : 18 Sample Multiplier: 1

Instrument :
 MSVOA_X
ClientSampleId :
 FSND-MW-EVAL-02S-20241113

Quant Time: Nov 22 22:27:08 2024
 Quant Method : Z:\voasrv\HPCHEM1\MSVOA_X\Method\82X112124W.M
 Quant Title : SW846 8260
 QLast Update : Fri Nov 22 03:45:52 2024
 Response via : Initial Calibration

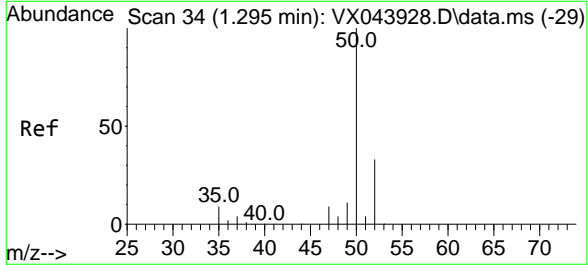
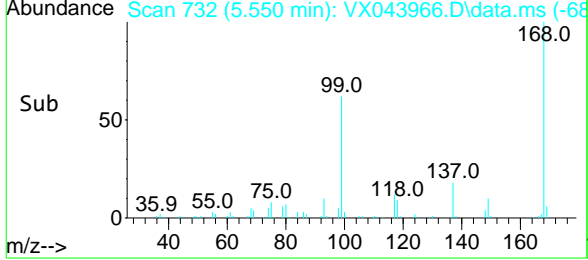
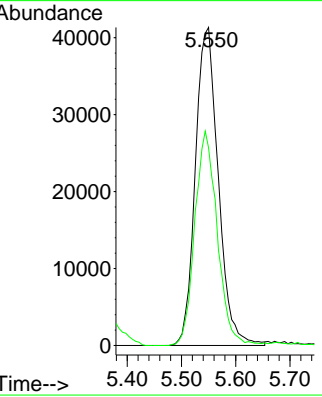
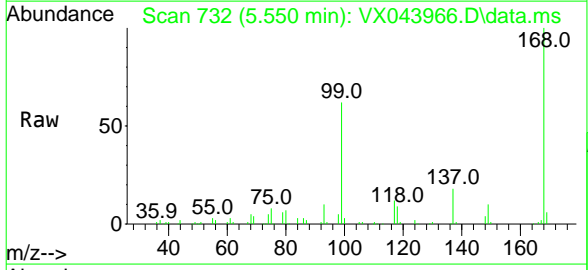




#1
 Pentafluorobenzene
 Concen: 50.000 ug/l
 RT: 5.550 min Scan# 73
 Delta R.T. 0.012 min
 Lab File: VX043966.D
 Acq: 22 Nov 2024 17:39

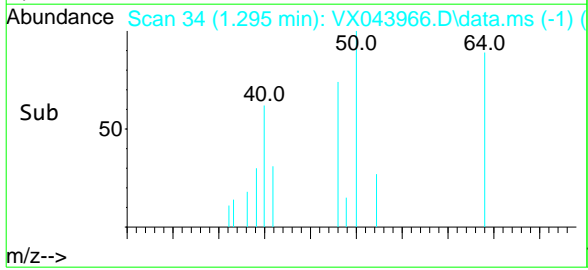
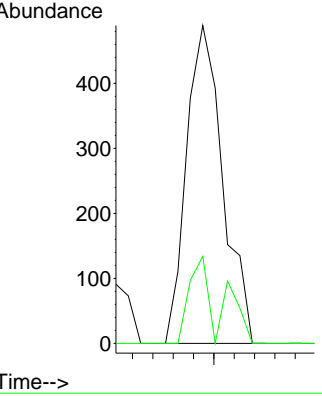
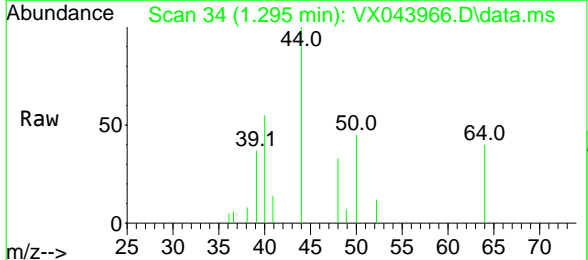
Instrument : MSVOA_X
 ClientSampleId : FSND-MW-EVAL-02S-20241113

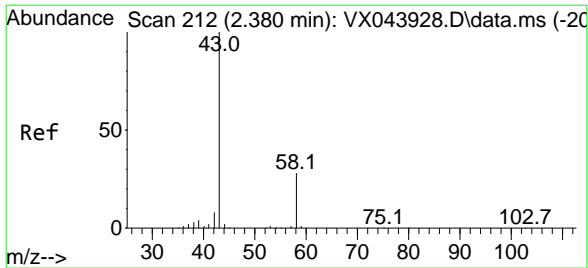
Tgt Ion: 168 Resp: 121293
 Ion Ratio Lower Upper
 168 100
 99 62.2 51.8 77.8



#3
 Chloromethane
 Concen: 0.375 ug/l
 RT: 1.295 min Scan# 34
 Delta R.T. -0.000 min
 Lab File: VX043966.D
 Acq: 22 Nov 2024 17:39

Tgt Ion: 50 Resp: 607
 Ion Ratio Lower Upper
 50 100
 52 27.4 26.1 39.1

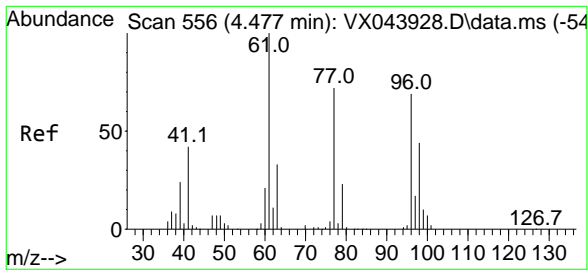
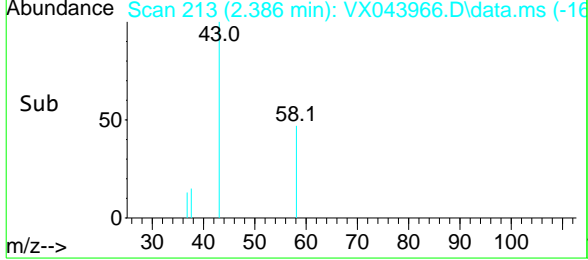
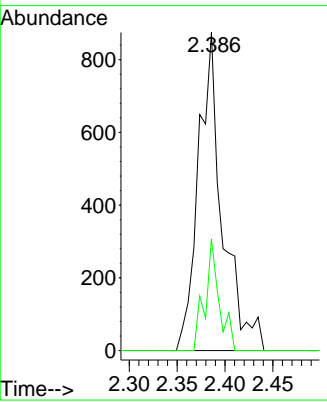
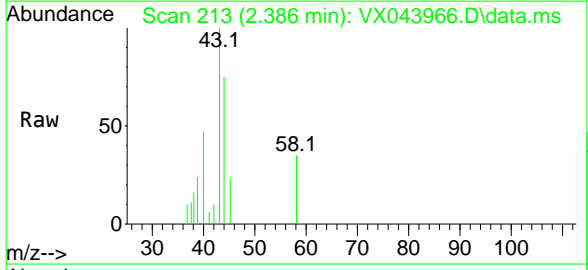




#16
 Acetone
 Concen: 1.601 ug/l
 RT: 2.386 min Scan# 21
 Delta R.T. 0.006 min
 Lab File: VX043966.D
 Acq: 22 Nov 2024 17:39

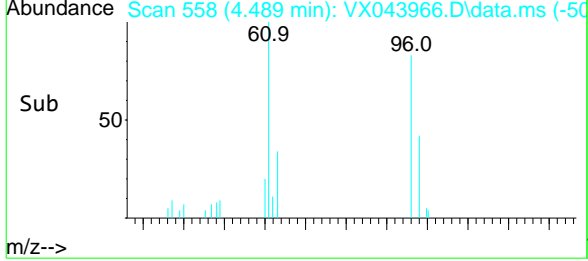
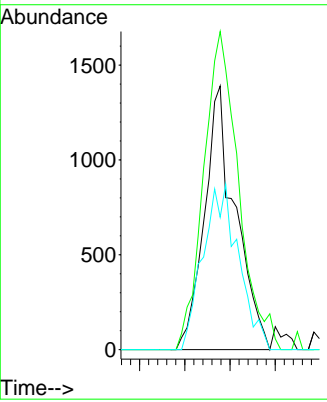
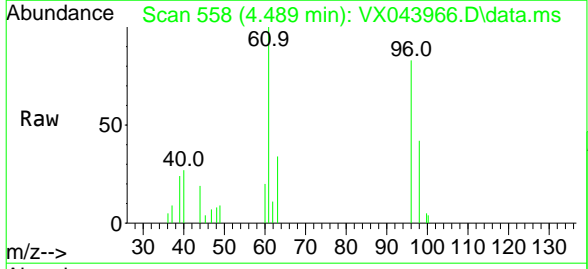
Instrument : MSVOA_X
 ClientSampleId : FSND-MW-EVAL-02S-20241113

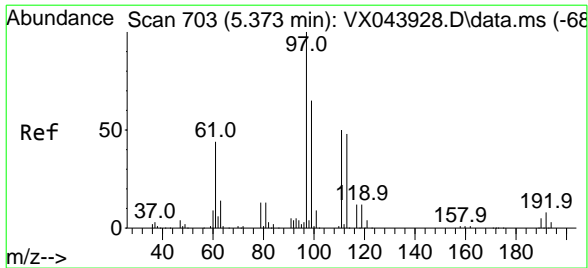
Tgt Ion	Resp	Lower	Upper
43	1530		
58	35.1	22.7	34.1#



#27
 cis-1,2-Dichloroethene
 Concen: 1.853 ug/l
 RT: 4.489 min Scan# 558
 Delta R.T. 0.012 min
 Lab File: VX043966.D
 Acq: 22 Nov 2024 17:39

Tgt Ion	Resp	Lower	Upper
96	3306		
61	136.0	0.0	297.4
98	72.0	0.0	127.8

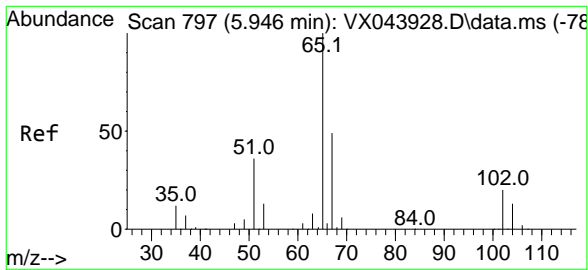
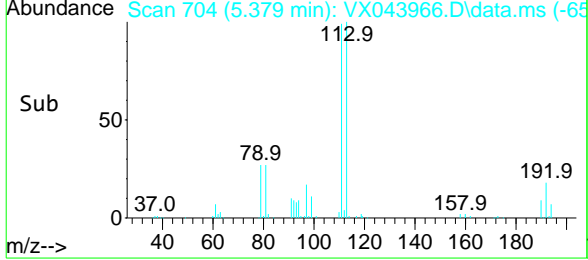
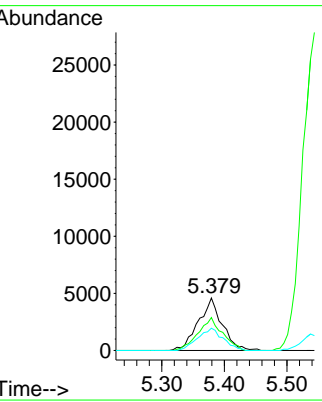
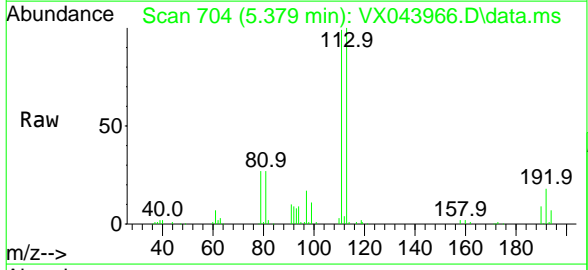




#32
 1,1,1-Trichloroethane
 Concen: 4.640 ug/l
 RT: 5.379 min Scan# 703
 Delta R.T. 0.006 min
 Lab File: VX043966.D
 Acq: 22 Nov 2024 17:39

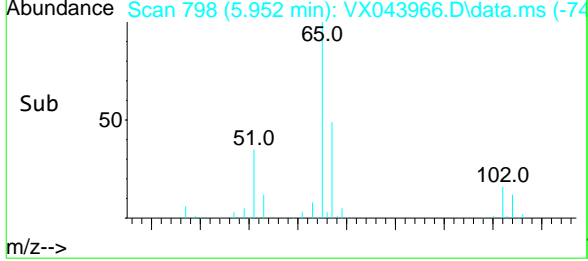
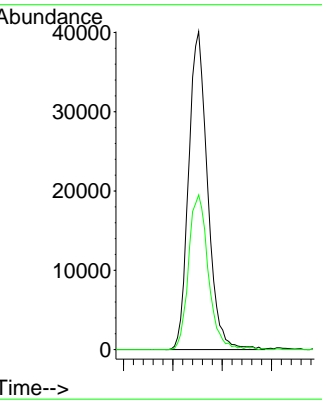
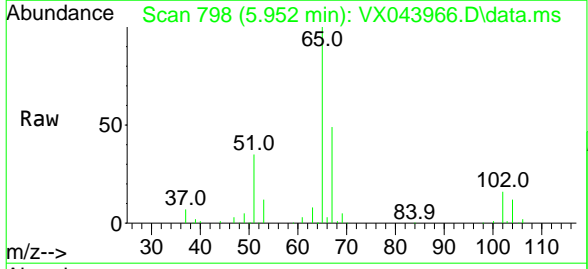
Instrument : MSVOA_X
 ClientSampleId : FSND-MW-EVAL-02S-20241113

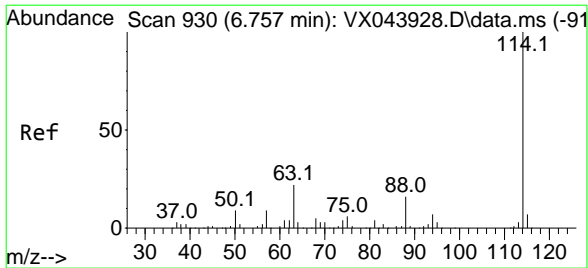
Tgt Ion	Resp	Lower	Upper
97	12125		
99	64.1	50.8	76.2
61	45.1	35.4	53.2



#33
 1,2-Dichloroethane-d4
 Concen: 51.453 ug/l
 RT: 5.952 min Scan# 798
 Delta R.T. 0.006 min
 Lab File: VX043966.D
 Acq: 22 Nov 2024 17:39

Tgt Ion	Resp	Lower	Upper
65	107041		
67	50.2	0.0	100.8

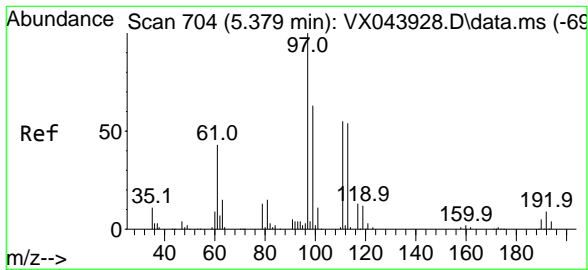
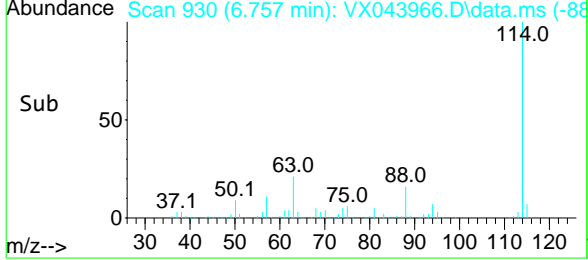
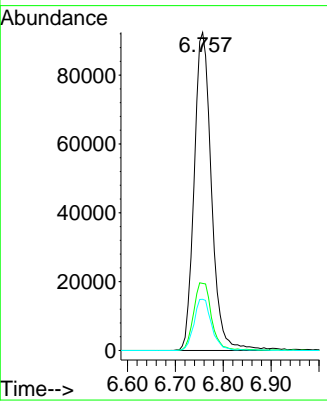
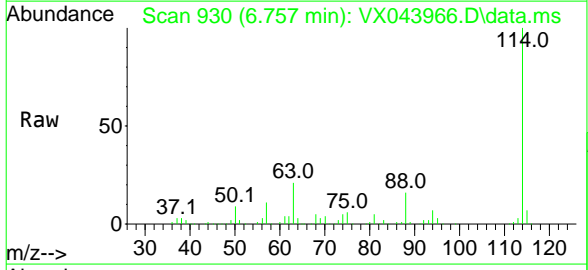




#34
 1,4-Difluorobenzene
 Concen: 50.000 ug/l
 RT: 6.757 min Scan# 93
 Delta R.T. -0.000 min
 Lab File: VX043966.D
 Acq: 22 Nov 2024 17:39

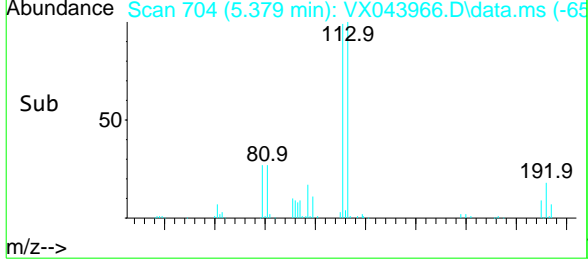
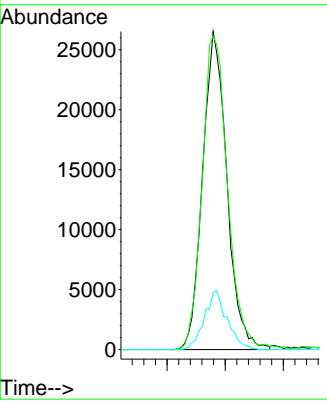
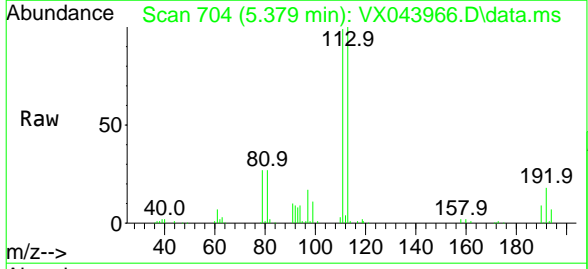
Instrument : MSVOA_X
 ClientSampleId : FSND-MW-EVAL-02S-20241113

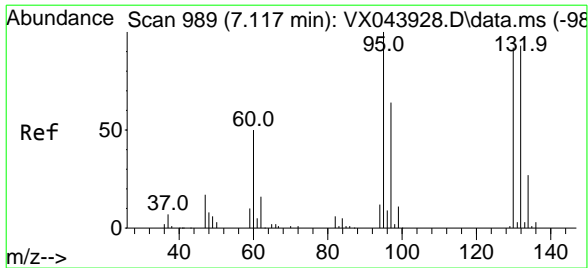
Tgt Ion	Resp	Lower	Upper
114	100		
63	21.1	0.0	44.0
88	16.1	0.0	32.4



#35
 Dibromofluoromethane
 Concen: 46.427 ug/l
 RT: 5.379 min Scan# 704
 Delta R.T. -0.000 min
 Lab File: VX043966.D
 Acq: 22 Nov 2024 17:39

Tgt Ion	Resp	Lower	Upper
113	100		
111	103.7	81.0	121.4
192	17.3	13.0	19.6

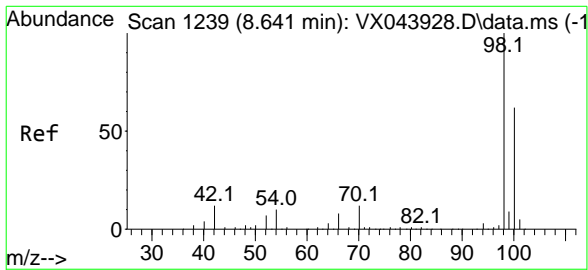
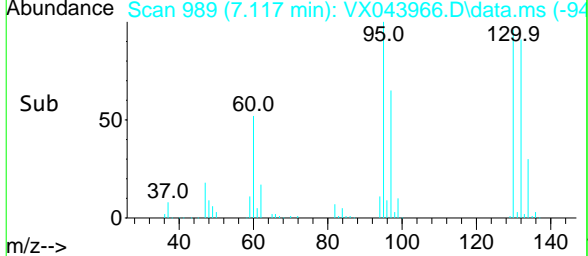
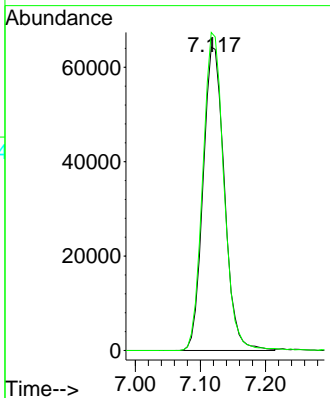
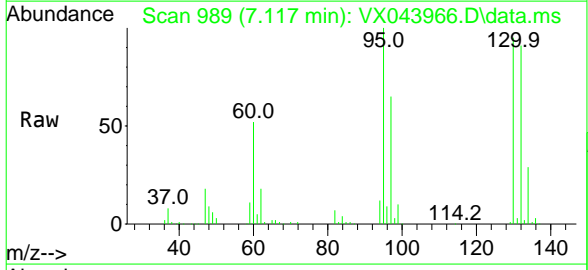




#44
 Trichloroethene
 Concen: 80.450 ug/l
 RT: 7.117 min Scan# 98
 Delta R.T. -0.000 min
 Lab File: VX043966.D
 Acq: 22 Nov 2024 17:39

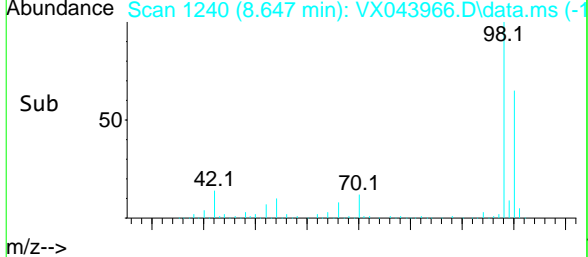
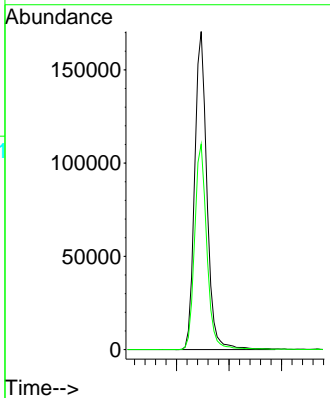
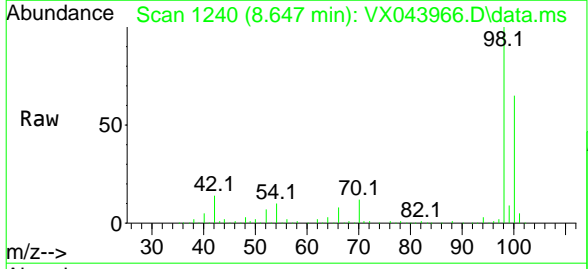
Instrument : MSVOA_X
 ClientSampleId : FSND-MW-EVAL-02S-20241113

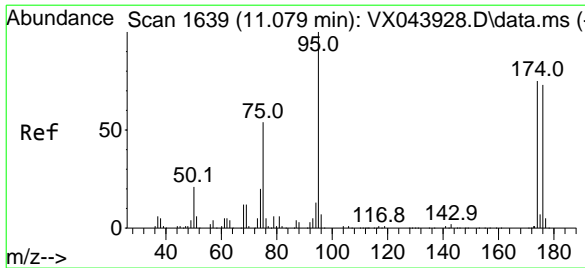
Tgt Ion:130 Resp: 146202
 Ion Ratio Lower Upper
 130 100
 95 104.8 0.0 217.8



#50
 Toluene-d8
 Concen: 48.455 ug/l
 RT: 8.647 min Scan# 1240
 Delta R.T. 0.006 min
 Lab File: VX043966.D
 Acq: 22 Nov 2024 17:39

Tgt Ion: 98 Resp: 276241
 Ion Ratio Lower Upper
 98 100
 100 64.4 52.6 79.0

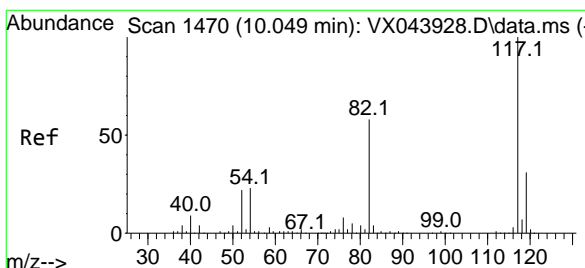
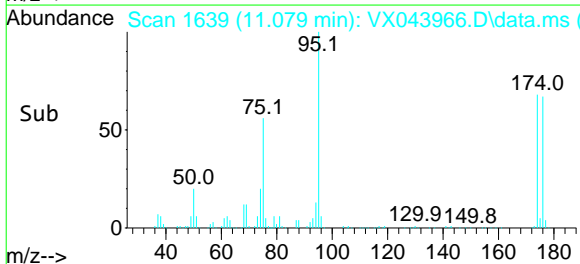
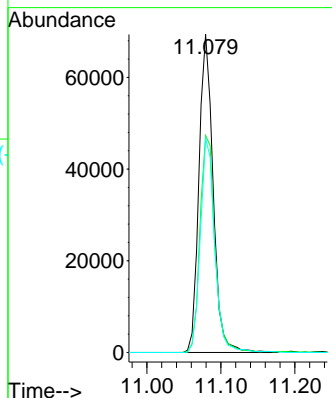
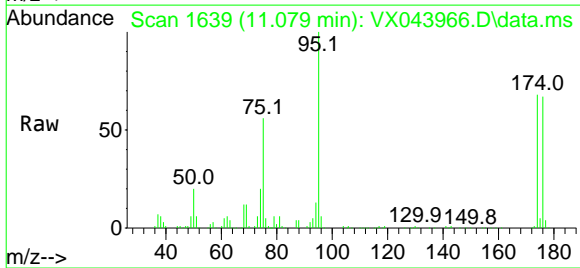




#62
 4-Bromofluorobenzene
 Concen: 47.622 ug/l
 RT: 11.079 min Scan# 1639
 Delta R.T. -0.000 min
 Lab File: VX043966.D
 Acq: 22 Nov 2024 17:39

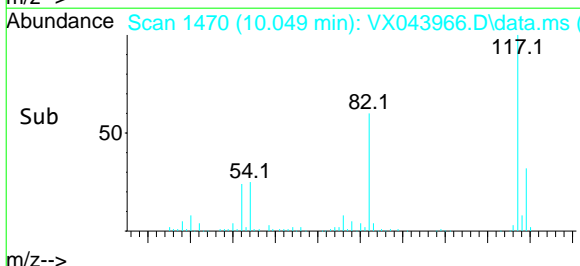
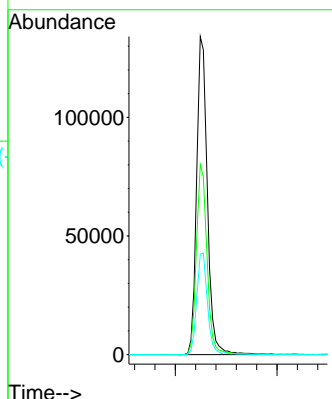
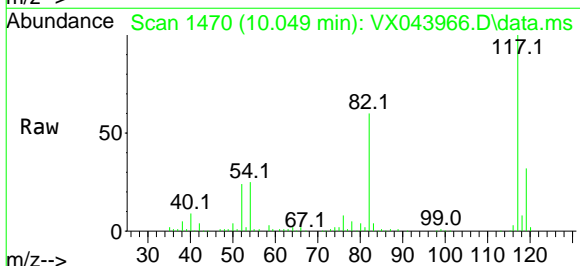
Instrument : MSVOA_X
 ClientSampleId : FSND-MW-EVAL-02S-20241113

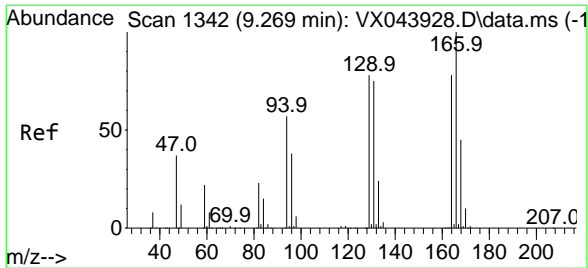
Tgt Ion	Resp	Lower	Upper
95	100		
174	71.7	0.0	150.4
176	68.1	0.0	146.0



#63
 Chlorobenzene-d5
 Concen: 50.000 ug/l
 RT: 10.049 min Scan# 1470
 Delta R.T. -0.000 min
 Lab File: VX043966.D
 Acq: 22 Nov 2024 17:39

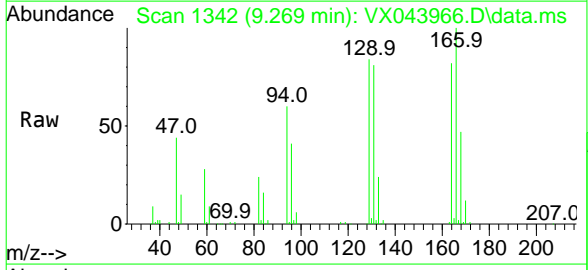
Tgt Ion	Resp	Lower	Upper
117	100		
82	59.8	46.4	69.6
119	31.6	24.6	37.0





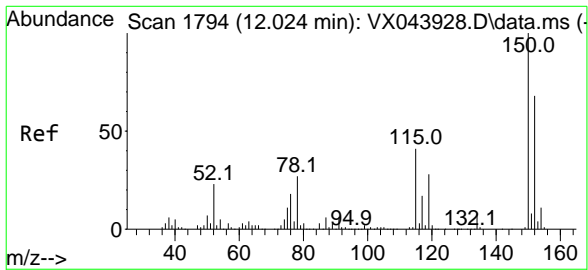
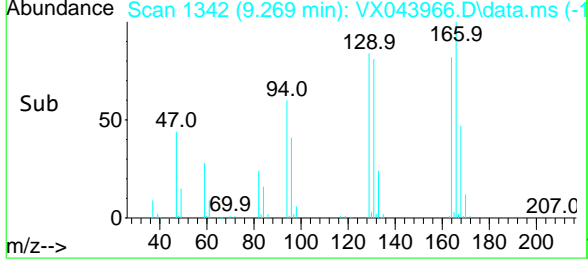
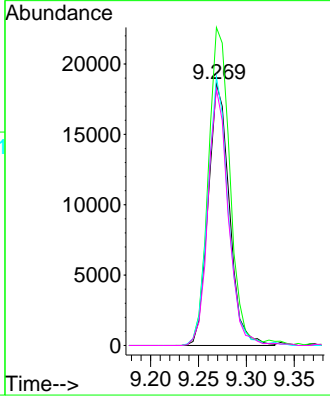
#64
 Tetrachloroethene
 Concen: 22.034 ug/l
 RT: 9.269 min Scan# 13
 Delta R.T. -0.000 min
 Lab File: VX043966.D
 Acq: 22 Nov 2024 17:39

Instrument : MSVOA_X
 ClientSampleId : FSND-MW-EVAL-02S-20241113



Tgt Ion:164 Resp: 28564

Ion	Ratio	Lower	Upper
164	100		
166	121.6	102.1	153.1
129	102.8	79.6	119.4
131	98.0	76.9	115.3



#72
 1,4-Dichlorobenzene-d4
 Concen: 50.000 ug/l
 RT: 12.024 min Scan# 1794
 Delta R.T. -0.000 min
 Lab File: VX043966.D
 Acq: 22 Nov 2024 17:39

Tgt Ion:152 Resp: 81016

Ion	Ratio	Lower	Upper
152	100		
115	63.9	45.4	136.2
150	158.2	0.0	353.0

