

Data Path : Z:\voasrv\HPCHEM1\MSVOA\_X\Data\VX112224\  
 Data File : VX043969.D  
 Acq On : 22 Nov 2024 18:47  
 Operator : JC/MD  
 Sample : P4846-17  
 Misc : 5.0mL/MSVOA\_X/WATER  
 ALS Vial : 21 Sample Multiplier: 1

**Instrument :**  
 MSVOA\_X  
**ClientSampleId :**  
 FSND-MW-EVAL-01S-20241113

Quant Time: Nov 22 22:28:39 2024  
 Quant Method : Z:\voasrv\HPCHEM1\MSVOA\_X\Method\82X112124W.M  
 Quant Title : SW846 8260  
 QLast Update : Fri Nov 22 03:45:52 2024  
 Response via : Initial Calibration

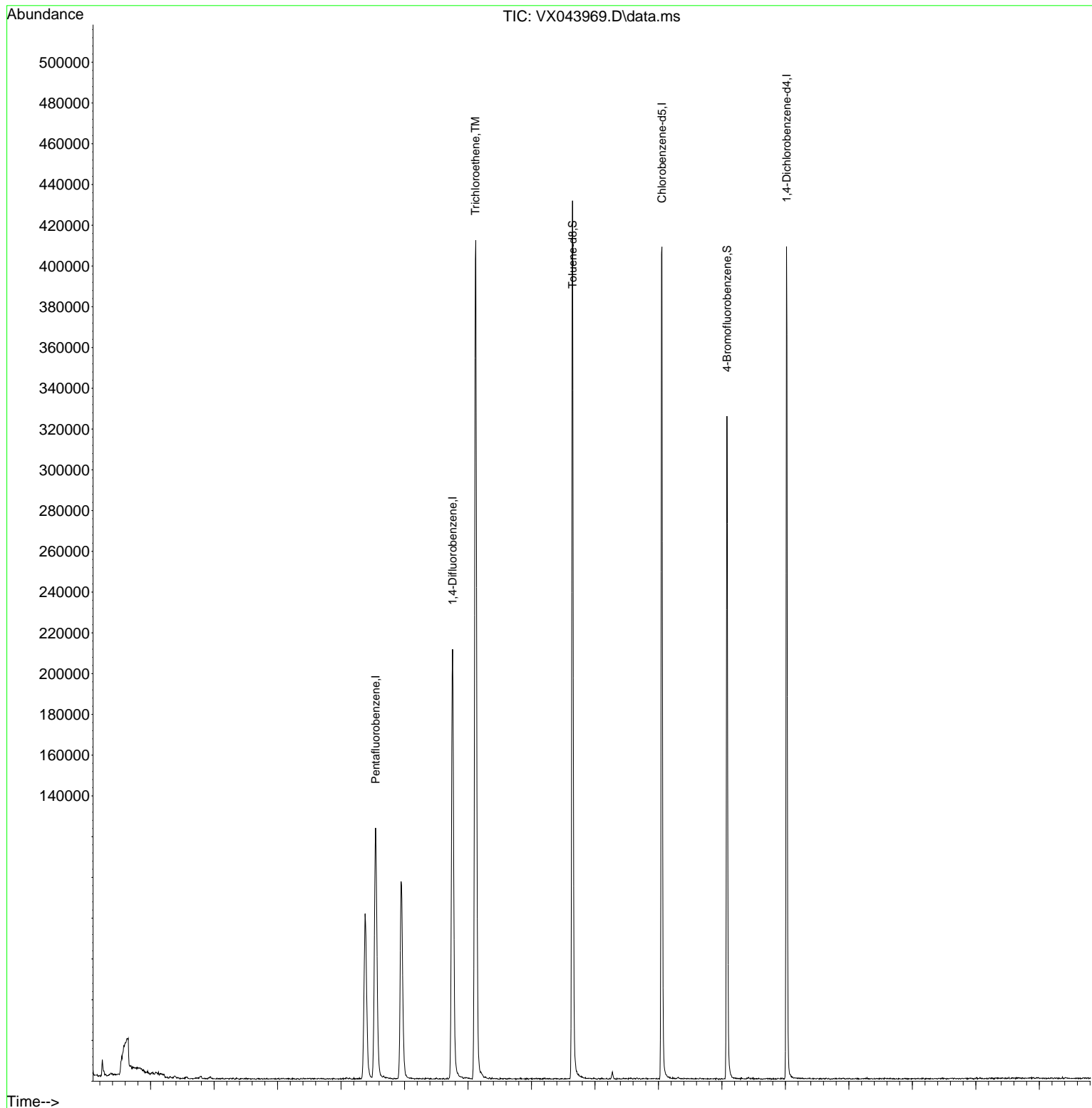
Compound	R.T.	QIon	Response	Conc	Units	Dev(Min)
-----						
Internal Standards						
1) Pentafluorobenzene	5.543	168	106735	50.000	ug/l	0.00
34) 1,4-Difluorobenzene	6.757	114	209074	50.000	ug/l	0.00
63) Chlorobenzene-d5	10.055	117	185900	50.000	ug/l	0.00
72) 1,4-Dichlorobenzene-d4	12.018	152	78265	50.000	ug/l	0.00
System Monitoring Compounds						
33) 1,2-Dichloroethane-d4	5.946	65	95772	52.315	ug/l	0.00
Spiked Amount	50.000	Range 74 - 125	Recovery	=	104.620%	
35) Dibromofluoromethane	5.379	113	68870	46.100	ug/l	0.00
Spiked Amount	50.000	Range 75 - 124	Recovery	=	92.200%	
50) Toluene-d8	8.647	98	257950	50.090	ug/l	0.00
Spiked Amount	50.000	Range 86 - 113	Recovery	=	100.180%	
62) 4-Bromofluorobenzene	11.079	95	85223	48.626	ug/l	0.00
Spiked Amount	50.000	Range 77 - 121	Recovery	=	97.260%	
Target Compounds						
16) Acetone	2.379	43	1230	1.463	ug/l #	88
44) Trichloroethene	7.116	130	147401	89.792	ug/l	96
-----						

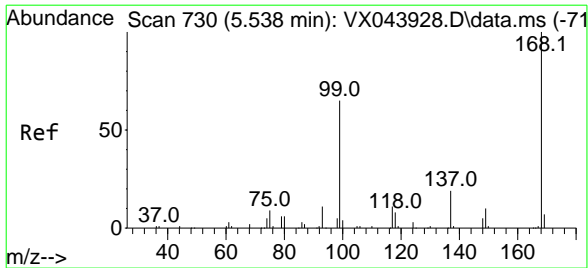
(#) = qualifier out of range (m) = manual integration (+) = signals summed

Data Path : Z:\voasrv\HPCHEM1\MSVOA\_X\Data\VX112224\  
 Data File : VX043969.D  
 Acq On : 22 Nov 2024 18:47  
 Operator : JC/MD  
 Sample : P4846-17  
 Misc : 5.0mL/MSVOA\_X/WATER  
 ALS Vial : 21 Sample Multiplier: 1

**Instrument :**  
 MSVOA\_X  
**ClientSampleId :**  
 FSND-MW-EVAL-01S-20241113

Quant Time: Nov 22 22:28:39 2024  
 Quant Method : Z:\voasrv\HPCHEM1\MSVOA\_X\Method\82X112124W.M  
 Quant Title : SW846 8260  
 QLast Update : Fri Nov 22 03:45:52 2024  
 Response via : Initial Calibration

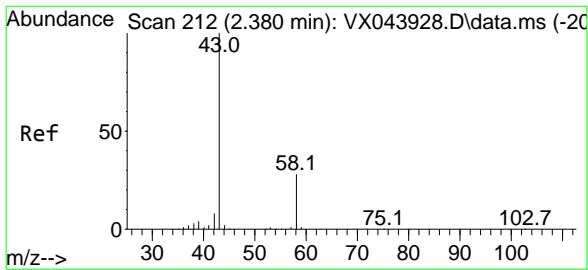
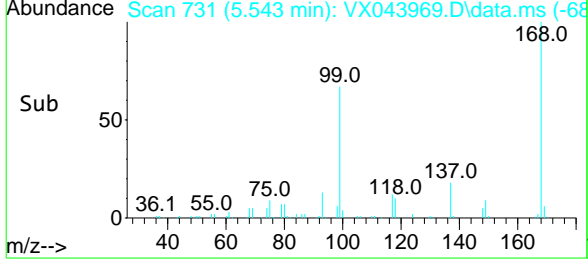
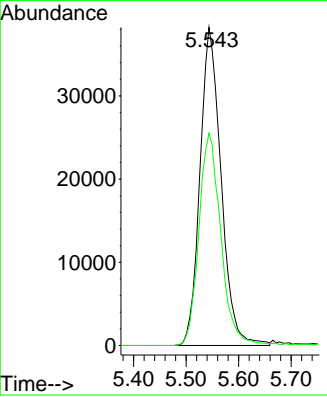
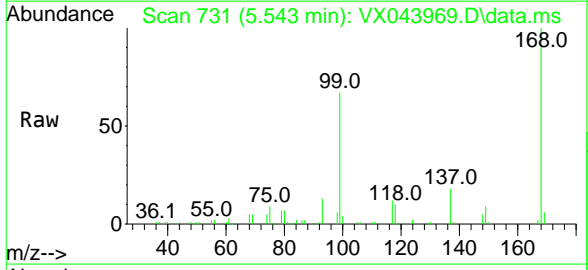




#1  
 Pentafluorobenzene  
 Concen: 50.000 ug/l  
 RT: 5.543 min Scan# 731  
 Delta R.T. 0.005 min  
 Lab File: VX043969.D  
 Acq: 22 Nov 2024 18:47

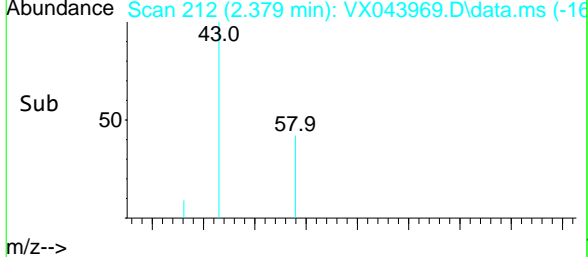
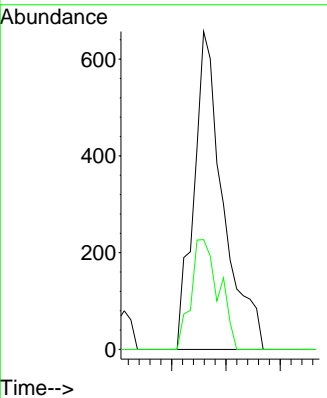
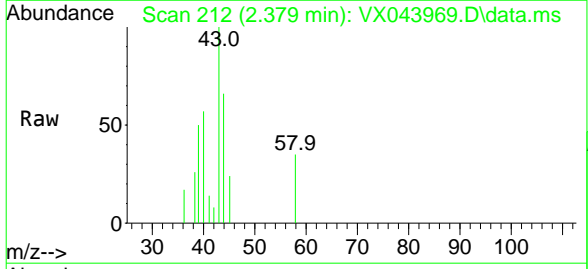
Instrument : MSVOA\_X  
 ClientSampleId : FSND-MW-EVAL-01S-20241113

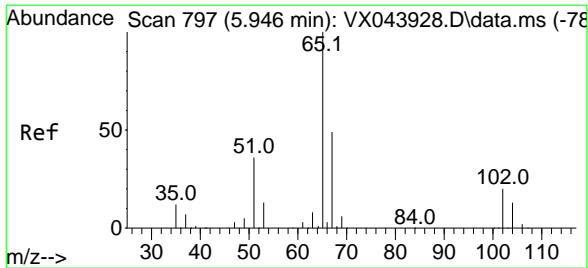
Tgt Ion: 168 Resp: 106735  
 Ion Ratio Lower Upper  
 168 100  
 99 66.8 51.8 77.8



#16  
 Acetone  
 Concen: 1.463 ug/l  
 RT: 2.379 min Scan# 212  
 Delta R.T. -0.000 min  
 Lab File: VX043969.D  
 Acq: 22 Nov 2024 18:47

Tgt Ion: 43 Resp: 1230  
 Ion Ratio Lower Upper  
 43 100  
 58 34.6 22.7 34.1#

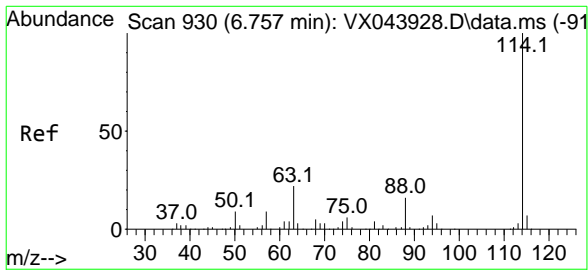
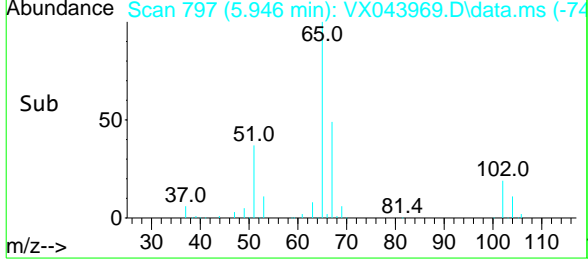
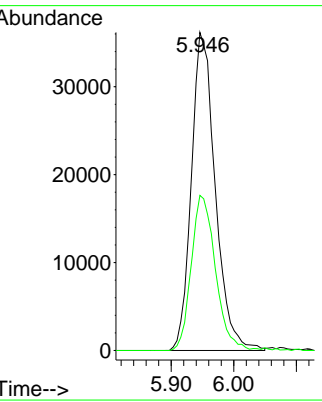
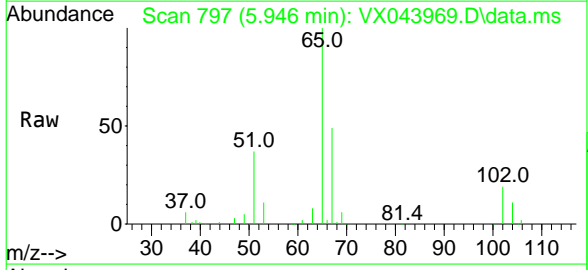




#33  
 1,2-Dichloroethane-d4  
 Concen: 52.315 ug/l  
 RT: 5.946 min Scan# 79  
 Delta R.T. -0.000 min  
 Lab File: VX043969.D  
 Acq: 22 Nov 2024 18:47

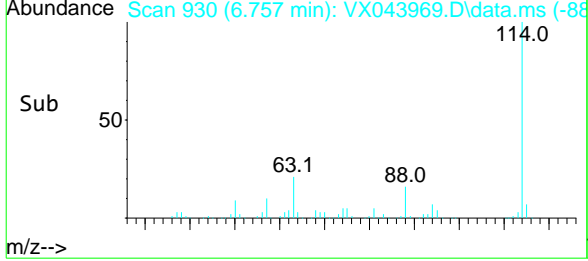
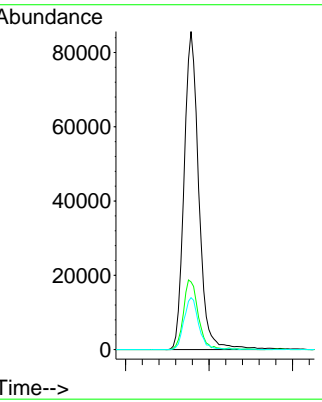
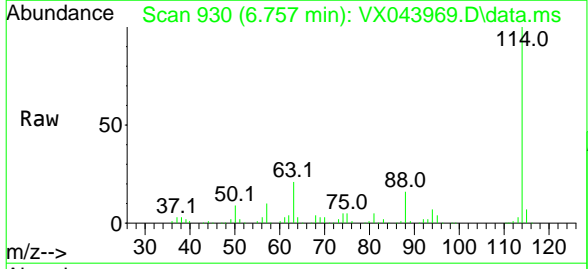
Instrument : MSVOA\_X  
 ClientSampleId : FSND-MW-EVAL-01S-20241113

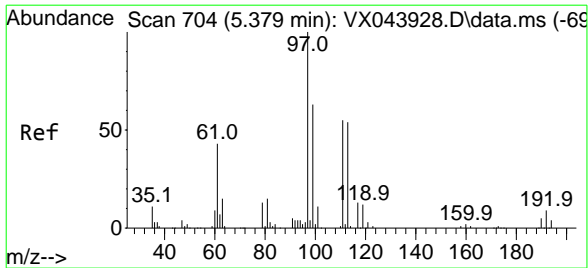
Tgt Ion	Resp	Lower	Upper
65	100		
67	49.4	0.0	100.8



#34  
 1,4-Difluorobenzene  
 Concen: 50.000 ug/l  
 RT: 6.757 min Scan# 930  
 Delta R.T. -0.000 min  
 Lab File: VX043969.D  
 Acq: 22 Nov 2024 18:47

Tgt Ion	Resp	Lower	Upper
114	100		
63	21.3	0.0	44.0
88	16.3	0.0	32.4

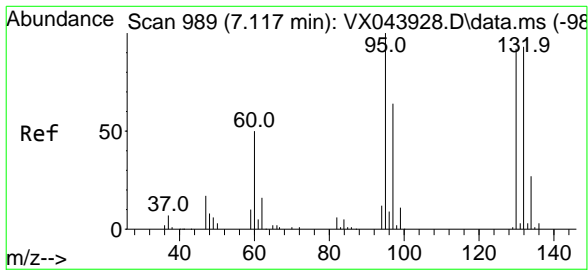
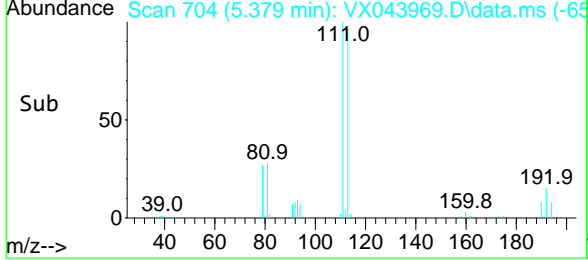
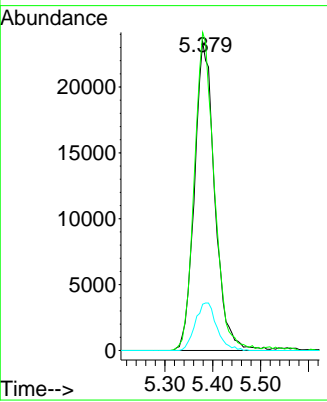
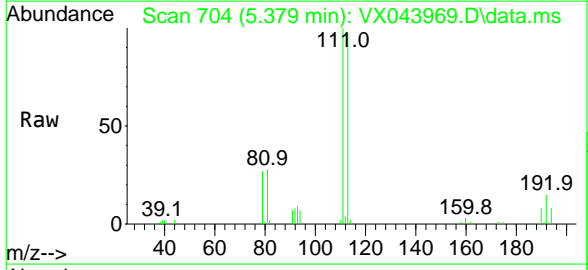




#35  
 Dibromofluoromethane  
 Concen: 46.100 ug/l  
 RT: 5.379 min Scan# 704  
 Delta R.T. -0.000 min  
 Lab File: VX043969.D  
 Acq: 22 Nov 2024 18:47

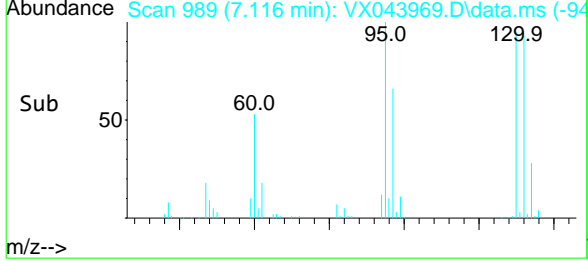
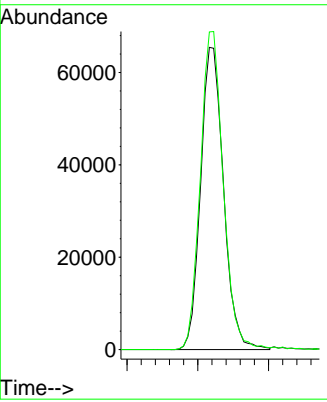
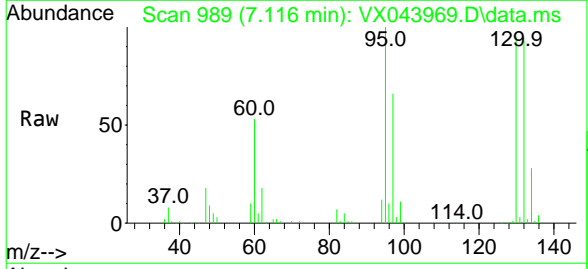
Instrument : MSVOA\_X  
 ClientSampleId : FSND-MW-EVAL-01S-20241113

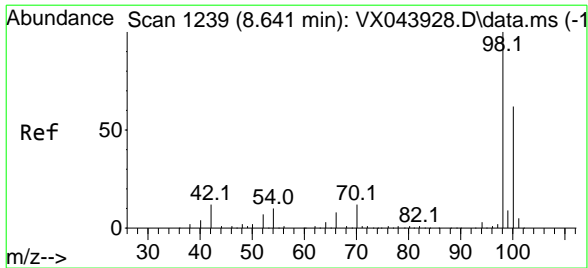
Tgt Ion	Resp	Lower	Upper
113	68870		
113	100		
111	102.1	81.0	121.4
192	16.3	13.0	19.6



#44  
 Trichloroethene  
 Concen: 89.792 ug/l  
 RT: 7.116 min Scan# 989  
 Delta R.T. -0.000 min  
 Lab File: VX043969.D  
 Acq: 22 Nov 2024 18:47

Tgt Ion	Resp	Lower	Upper
130	147401		
130	100		
95	105.1	0.0	217.8

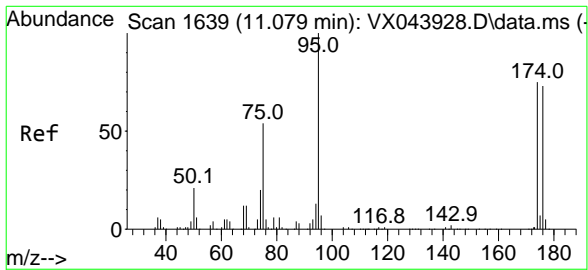
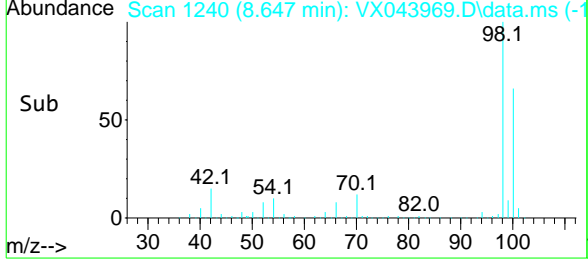
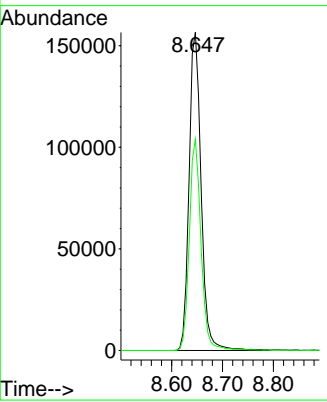
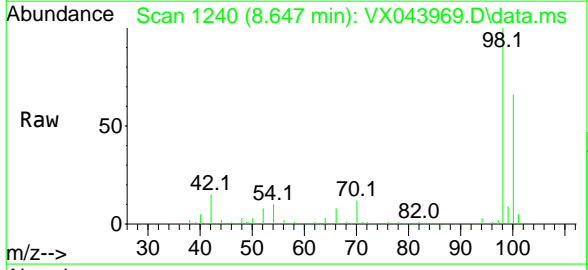




#50  
 Toluene-d8  
 Concen: 50.090 ug/l  
 RT: 8.647 min Scan# 12  
 Delta R.T. 0.006 min  
 Lab File: VX043969.D  
 Acq: 22 Nov 2024 18:47

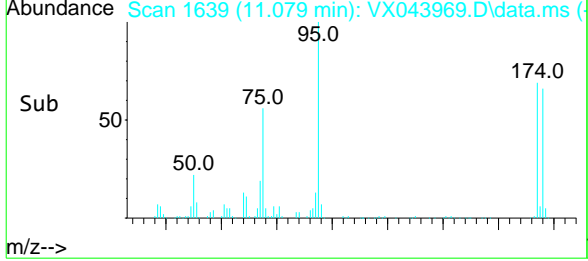
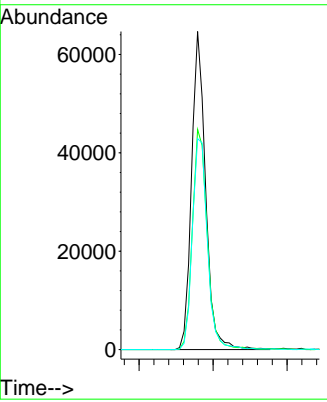
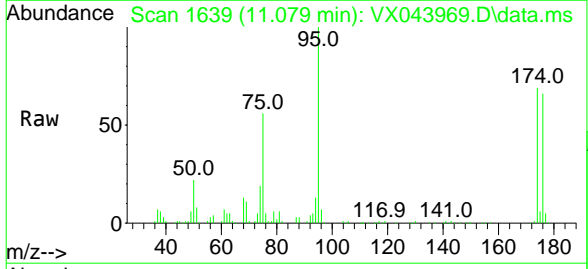
Instrument : MSVOA\_X  
 ClientSampleId : FSND-MW-EVAL-01S-20241113

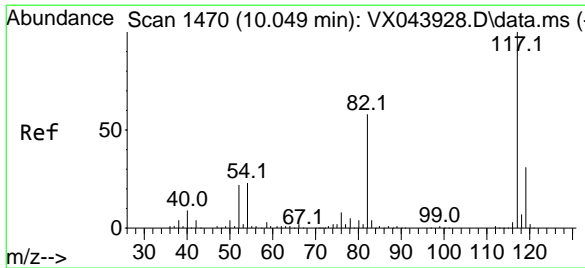
Tgt Ion: 98 Resp: 257950  
 Ion Ratio Lower Upper  
 98 100  
 100 64.8 52.6 79.0



#62  
 4-Bromofluorobenzene  
 Concen: 48.626 ug/l  
 RT: 11.079 min Scan# 1639  
 Delta R.T. -0.000 min  
 Lab File: VX043969.D  
 Acq: 22 Nov 2024 18:47

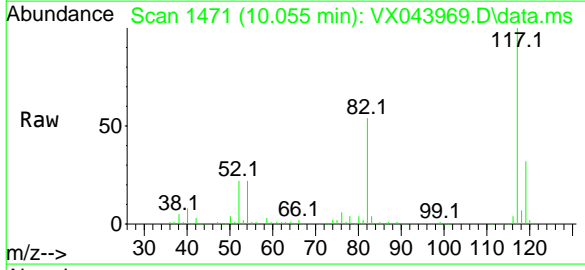
Tgt Ion: 95 Resp: 85223  
 Ion Ratio Lower Upper  
 95 100  
 174 73.1 0.0 150.4  
 176 71.5 0.0 146.0





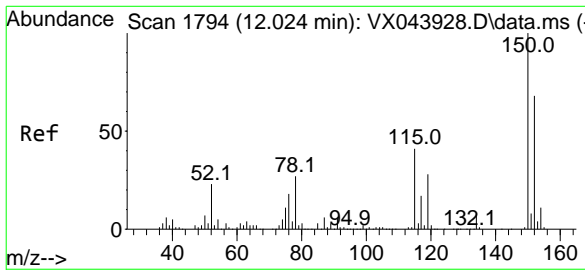
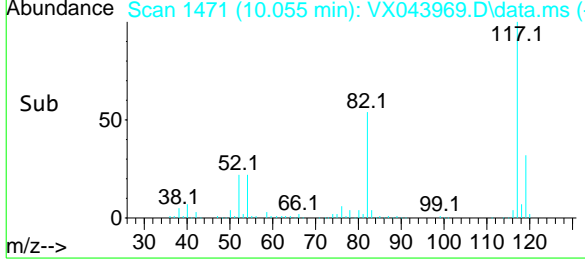
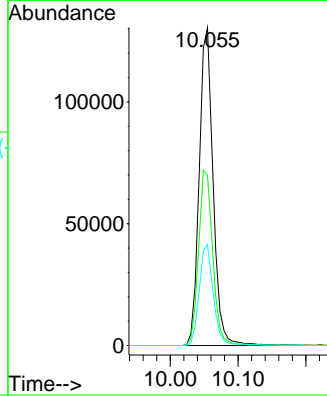
#63  
 Chlorobenzene-d5  
 Concen: 50.000 ug/l  
 RT: 10.055 min Scan# 14  
 Delta R.T. 0.006 min  
 Lab File: VX043969.D  
 Acq: 22 Nov 2024 18:47

Instrument : MSVOA\_X  
 ClientSampleId : FSND-MW-EVAL-01S-20241113



Tgt Ion: 117 Resp: 185900

Ion	Ratio	Lower	Upper
117	100		
82	53.6	46.4	69.6
119	31.7	24.6	37.0



#72  
 1,4-Dichlorobenzene-d4  
 Concen: 50.000 ug/l  
 RT: 12.018 min Scan# 1793  
 Delta R.T. -0.006 min  
 Lab File: VX043969.D  
 Acq: 22 Nov 2024 18:47

Tgt Ion: 152 Resp: 78265

Ion	Ratio	Lower	Upper
152	100		
115	62.2	45.4	136.2
150	156.8	0.0	353.0

