

Data Path : Z:\voasrv\HPCHEM1\MSVOA\_X\Data\VX112321\  
 Data File : VX025309.D  
 Acq On : 24 Nov 2021 05:04  
 Operator : JC/MD  
 Sample : PB140964ZHE#01  
 Misc : 5.0mL/MSVOA\_X/WATER  
 ALS Vial : 50 Sample Multiplier: 1

Instrument :  
 MSVOA\_X  
 ClientSampleId :  
 PB140964ZHE#01

Quant Time: Nov 24 09:56:19 2021  
 Quant Method : Z:\voasrv\HPCHEM1\MSVOA\_X\Method\82X111721W.M  
 Quant Title : SW846 8260  
 QLast Update : Wed Nov 17 15:36:16 2021  
 Response via : Initial Calibration

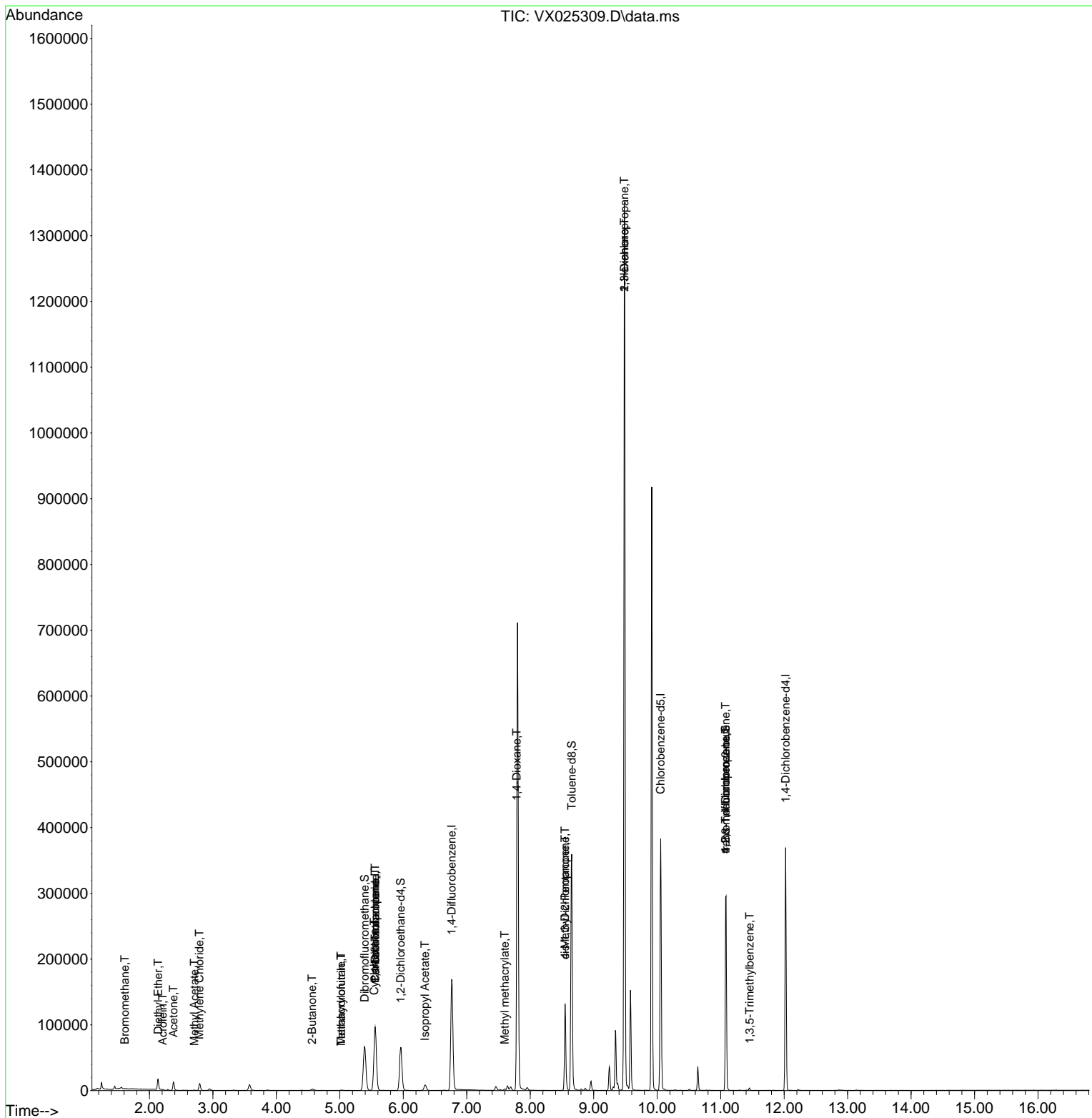
Compound	R.T.	QIon	Response	Conc	Units	Dev(Min)
Internal Standards						
1) Pentafluorobenzene	5.556	168	99771	50.000	ug/l	0.00
34) 1,4-Difluorobenzene	6.763	114	182155	50.000	ug/l	0.00
63) Chlorobenzene-d5	10.055	117	178933	50.000	ug/l	0.00
72) 1,4-Dichlorobenzene-d4	12.024	152	79860	50.000	ug/l	0.00
System Monitoring Compounds						
33) 1,2-Dichloroethane-d4	5.958	65	61083	58.083	ug/l	0.00
Spiked Amount	50.000	Range 78 - 117	Recovery	=	116.160%	
35) Dibromofluoromethane	5.391	113	58717	52.536	ug/l	0.00
Spiked Amount	50.000	Range 75 - 124	Recovery	=	105.080%	
50) Toluene-d8	8.653	98	218254	51.938	ug/l	0.00
Spiked Amount	50.000	Range 92 - 112	Recovery	=	103.880%	
62) 4-Bromofluorobenzene	11.079	95	81773	51.438	ug/l	0.00
Spiked Amount	50.000	Range 83 - 123	Recovery	=	102.880%	
Target Compounds						
						Qvalue
5) Bromomethane	1.611	94	301	0.595	ug/l #	49
8) Diethyl Ether	2.136	74	5293	7.350	ug/l	91
11) Tert butyl alcohol	2.947	59	1704	Below Cal	#	72
13) Acrolein	2.209	56	56	1.162	ug/l #	1
16) Acetone	2.380	43	13234	22.647	ug/l	97
18) Methyl Acetate	2.709	43	726	0.389	ug/l #	86
20) Methylene Chloride	2.788	84	5002	4.554	ug/l	88
25) 2-Butanone	4.562	43	2659	3.147	ug/l	93
29) Tetrahydrofuran	5.019	42	487	0.931	ug/l #	36
31) Cyclohexane	5.544	56	1764	1.085	ug/l #	38
36) 1,1-Dichloropropene	5.556	75	6506	4.094	ug/l #	50
38) Carbon Tetrachloride	5.556	117	9381	5.359	ug/l #	16
41) Methacrylonitrile	5.019	41	313	0.312	ug/l #	33
43) Isopropyl Acetate	6.342	43	11989	3.984	ug/l	95
48) Methyl methacrylate	7.598	41	3420	2.422	ug/l #	14
49) 1,4-Dioxane	7.787	88	37	1.241	ug/l #	1
51) 4-Methyl-2-Pentanone	8.549	43	42514	22.531	ug/l #	51
54) cis-1,3-Dichloropropene	8.549	75	20939	10.298	ug/l #	60
57) 1,3-Dichloropropane	9.482	76	12436	6.006	ug/l #	42
59) 2-Hexanone	9.482	43	157586	105.935	ug/l #	53
76) 1,2,3-Trichloropropane	11.079	75	39254	24.003	ug/l #	37
80) 1,3,5-Trimethylbenzene	11.457	105	1832	0.383	ug/l	98
81) trans-1,4-Dichloro-2-b...	11.079	75	39254	60.468	ug/l #	9
95) Naphthalene	13.780	128	123	Below Cal	#	69

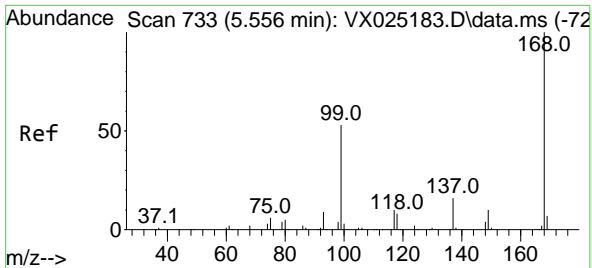
(#) = qualifier out of range (m) = manual integration (+) = signals summed

Data Path : Z:\voasrv\HPCHEM1\MSVOA\_X\Data\VX112321\  
 Data File : VX025309.D  
 Acq On : 24 Nov 2021 05:04  
 Operator : JC/MD  
 Sample : PB140964ZHE#01  
 Misc : 5.0mL/MSVOA\_X/WATER  
 ALS Vial : 50 Sample Multiplier: 1

Instrument :  
 MSVOA\_X  
 ClientSampleId :  
 PB140964ZHE#01

Quant Time: Nov 24 09:56:19 2021  
 Quant Method : Z:\voasrv\HPCHEM1\MSVOA\_X\Method\82X111721W.M  
 Quant Title : SW846 8260  
 QLast Update : Wed Nov 17 15:36:16 2021  
 Response via : Initial Calibration

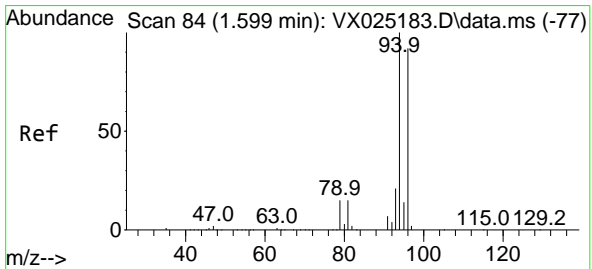
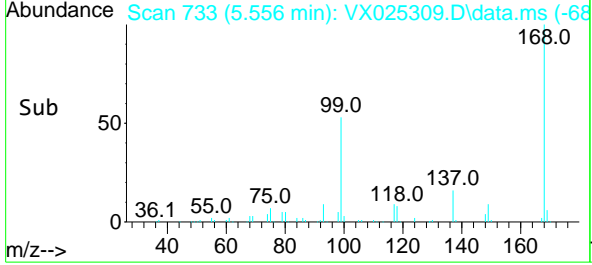
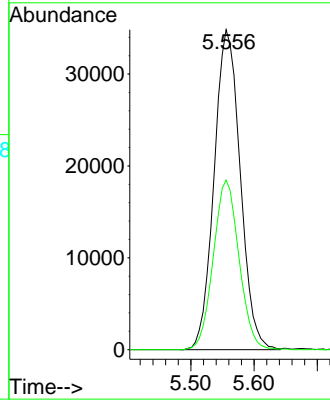
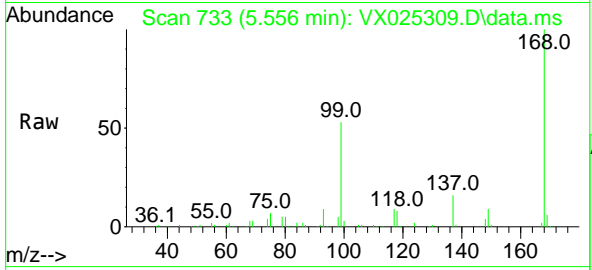




#1  
 Pentafluorobenzene  
 Concen: 50.000 ug/l  
 RT: 5.556 min Scan# 71  
 Delta R.T. -0.000 min  
 Lab File: VX025309.D  
 Acq: 24 Nov 2021 05:04

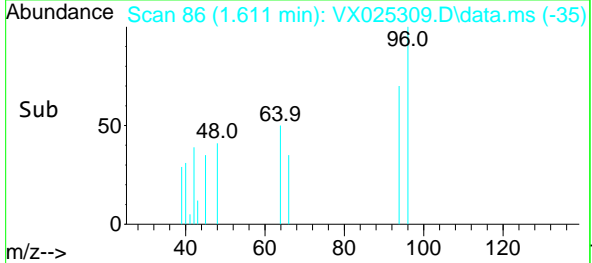
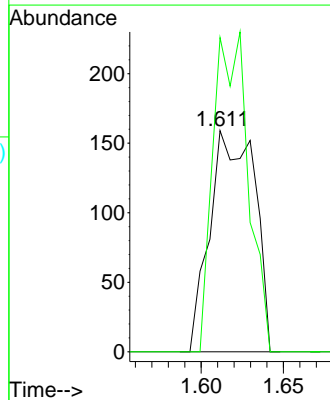
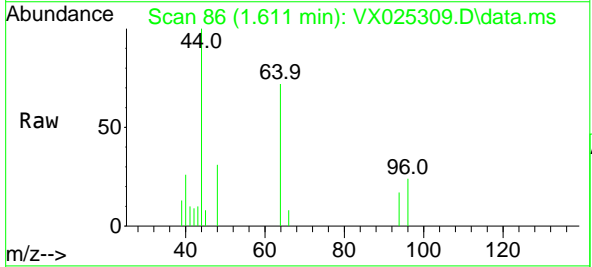
Instrument :  
 MSVOA\_X  
 ClientSampleId :  
 PB140964ZHE#01

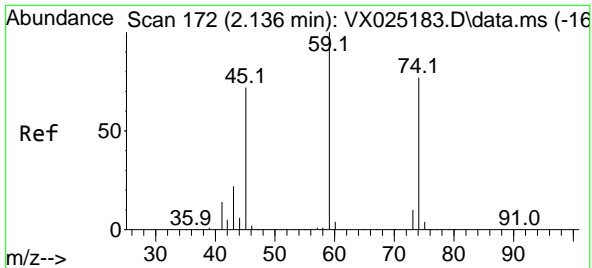
Tgt Ion:168 Resp: 99771  
 Ion Ratio Lower Upper  
 168 100  
 99 53.0 46.4 69.6



#5  
 Bromomethane  
 Concen: 0.595 ug/l  
 RT: 1.611 min Scan# 86  
 Delta R.T. 0.012 min  
 Lab File: VX025309.D  
 Acq: 24 Nov 2021 05:04

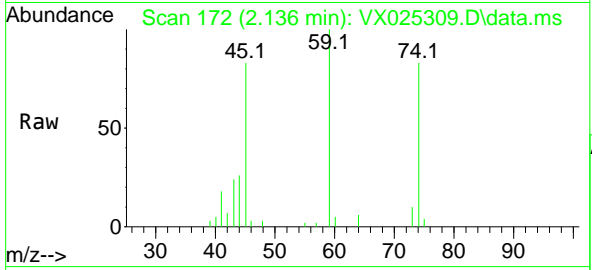
Tgt Ion: 94 Resp: 301  
 Ion Ratio Lower Upper  
 94 100  
 96 142.1 74.8 112.2#



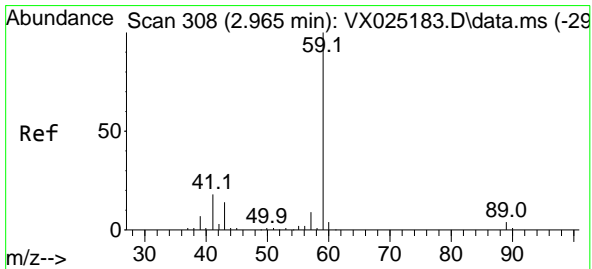
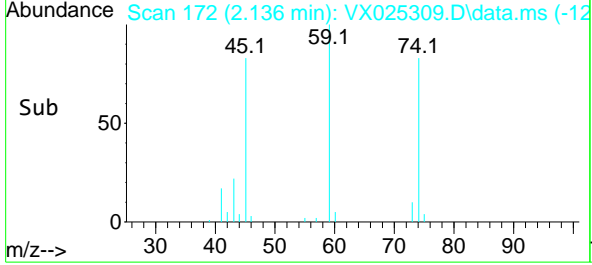
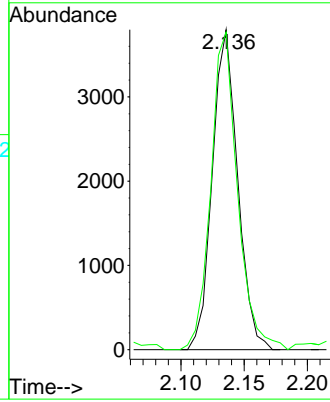


#8  
 Diethyl Ether  
 Concen: 7.350 ug/l  
 RT: 2.136 min Scan# 11  
 Delta R.T. -0.000 min  
 Lab File: VX025309.D  
 Acq: 24 Nov 2021 05:04

Instrument : MSVOA\_X  
 ClientSampleId : PB140964ZHE#01

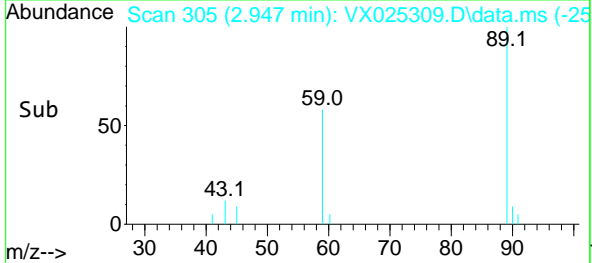
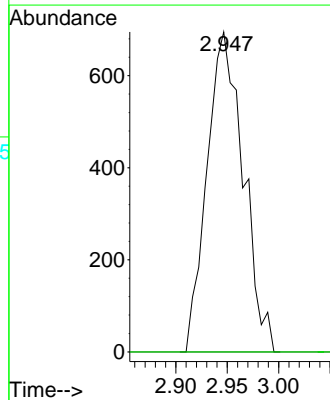
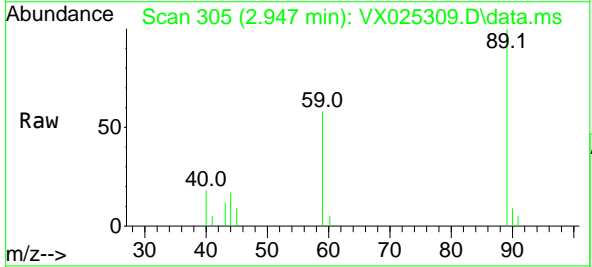


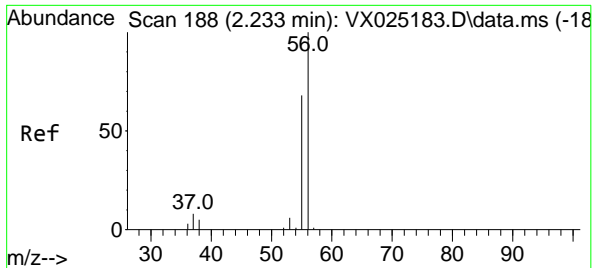
Tgt Ion: 74 Resp: 5293  
 Ion Ratio Lower Upper  
 74 100  
 45 104.4 47.6 142.9



#11  
 Tert butyl alcohol  
 Concen: Below Cal  
 RT: 2.947 min Scan# 305  
 Delta R.T. -0.018 min  
 Lab File: VX025309.D  
 Acq: 24 Nov 2021 05:04

Tgt Ion: 59 Resp: 1704  
 Ion Ratio Lower Upper  
 59 100  
 57 0.0 8.5 12.7#

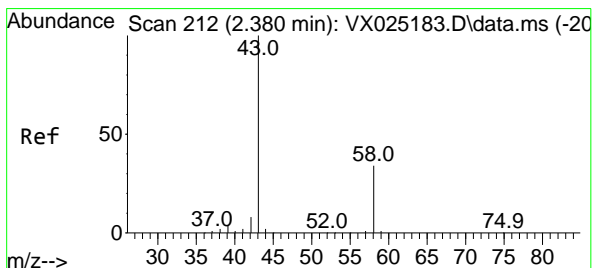
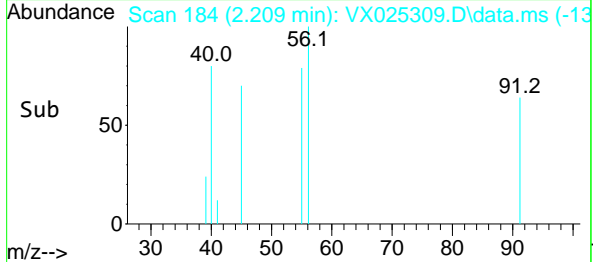
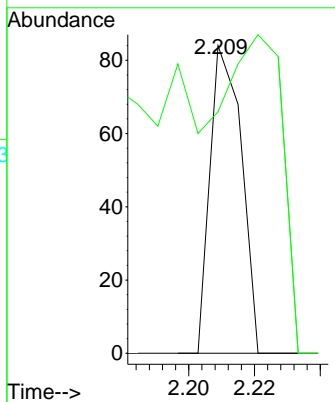
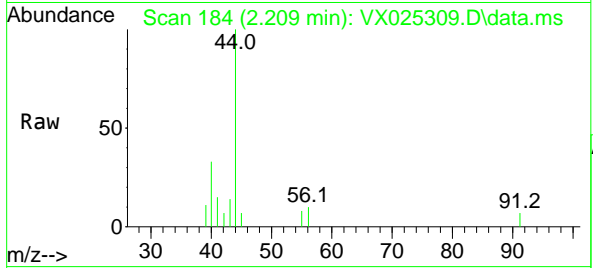




#13  
 Acrolein  
 Concen: 1.162 ug/l  
 RT: 2.209 min Scan# 11  
 Delta R.T. -0.024 min  
 Lab File: VX025309.D  
 Acq: 24 Nov 2021 05:04

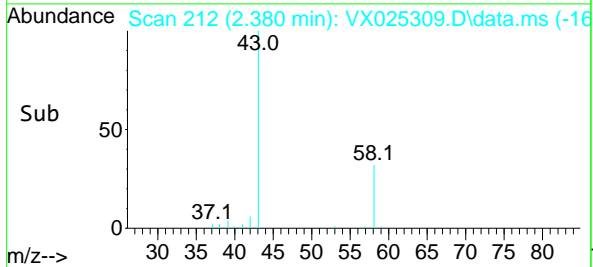
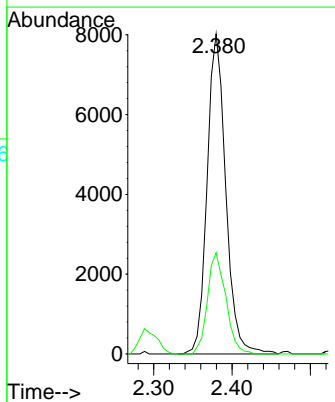
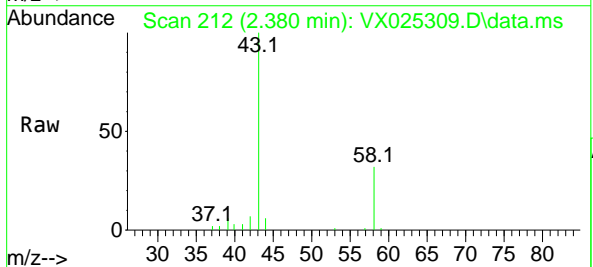
Instrument : MSVOA\_X  
 ClientSampleId : PB140964ZHE#01

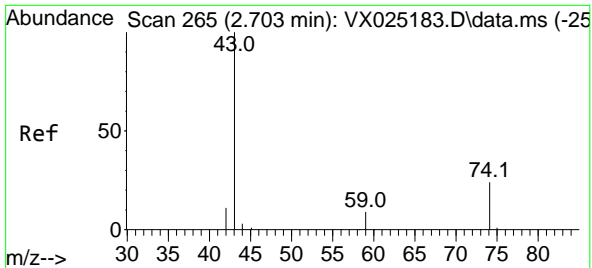
Tgt Ion: 56 Resp: 56  
 Ion Ratio Lower Upper  
 56 100  
 55 160.7 58.6 87.8#



#16  
 Acetone  
 Concen: 22.647 ug/l  
 RT: 2.380 min Scan# 212  
 Delta R.T. -0.000 min  
 Lab File: VX025309.D  
 Acq: 24 Nov 2021 05:04

Tgt Ion: 43 Resp: 13234  
 Ion Ratio Lower Upper  
 43 100  
 58 31.6 24.0 36.0

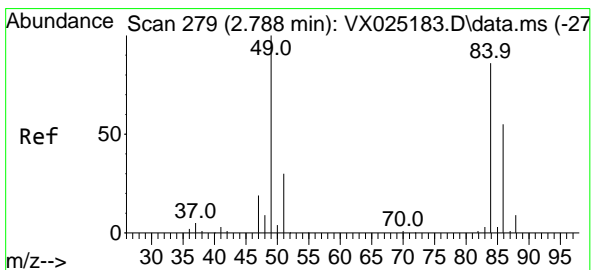
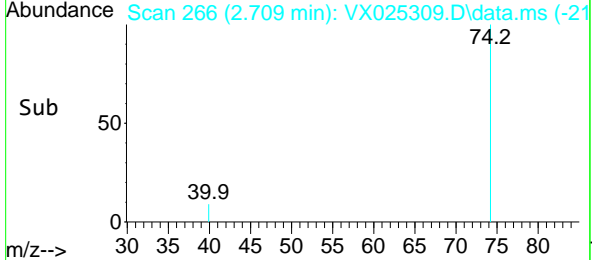
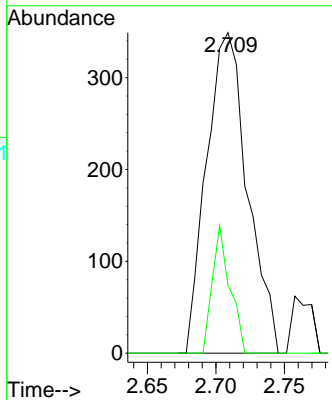
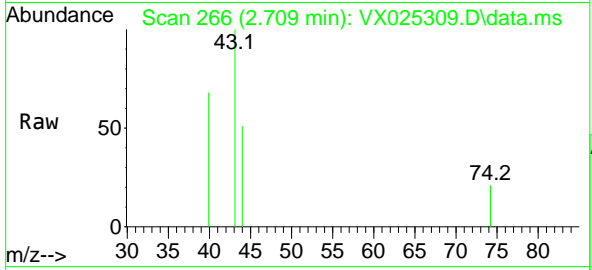




#18  
 Methyl Acetate  
 Concen: 0.389 ug/l  
 RT: 2.709 min Scan# 266  
 Delta R.T. 0.006 min  
 Lab File: VX025309.D  
 Acq: 24 Nov 2021 05:04

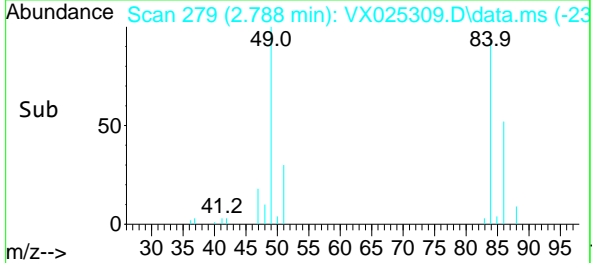
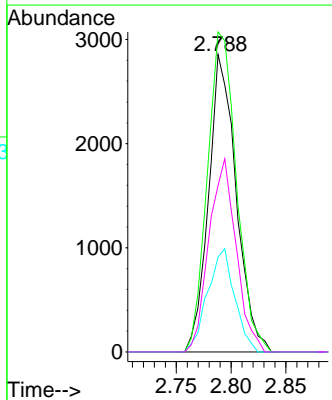
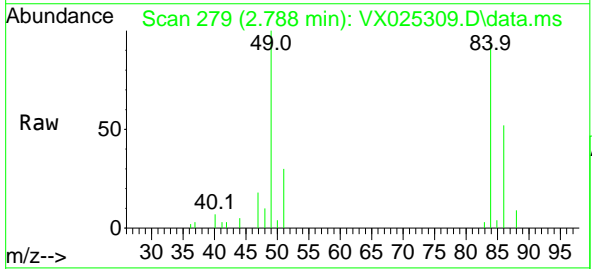
Instrument : MSVOA\_X  
 ClientSampleId : PB140964ZHE#01

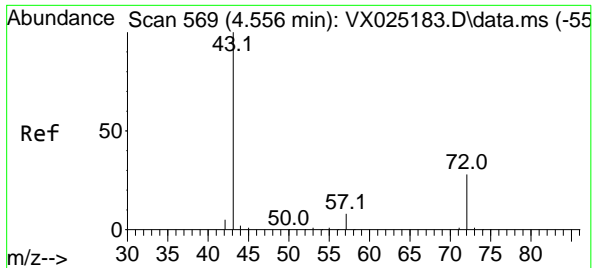
Tgt Ion: 43 Resp: 726  
 Ion Ratio Lower Upper  
 43 100  
 74 17.1 19.0 28.6#



#20  
 Methylene Chloride  
 Concen: 4.554 ug/l  
 RT: 2.788 min Scan# 279  
 Delta R.T. 0.000 min  
 Lab File: VX025309.D  
 Acq: 24 Nov 2021 05:04

Tgt Ion: 84 Resp: 5002  
 Ion Ratio Lower Upper  
 84 100  
 49 107.6 98.2 147.2  
 51 31.8 30.2 45.4  
 86 55.9 52.2 78.2

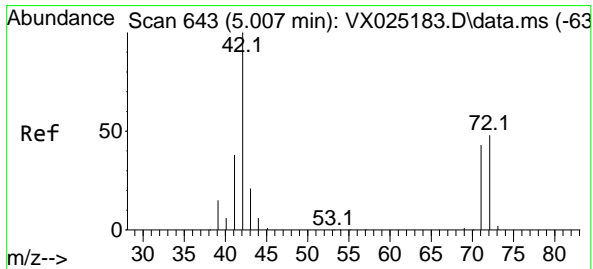
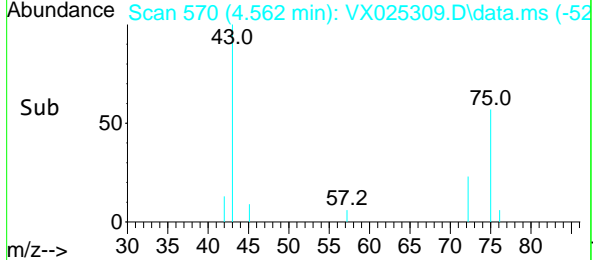
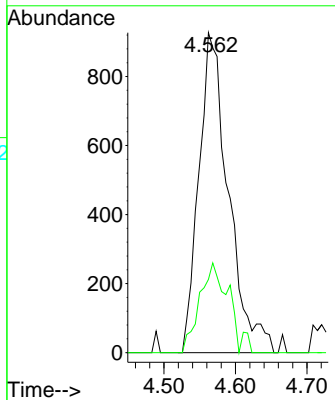
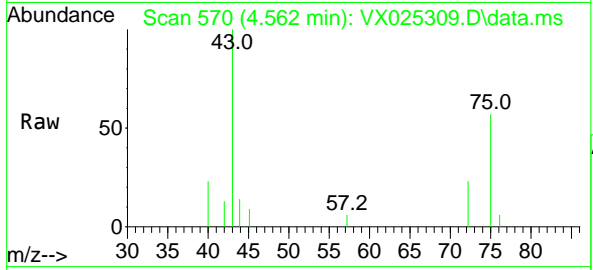




#25  
 2-Butanone  
 Concen: 3.147 ug/l  
 RT: 4.562 min Scan# 51  
 Delta R.T. 0.006 min  
 Lab File: VX025309.D  
 Acq: 24 Nov 2021 05:04

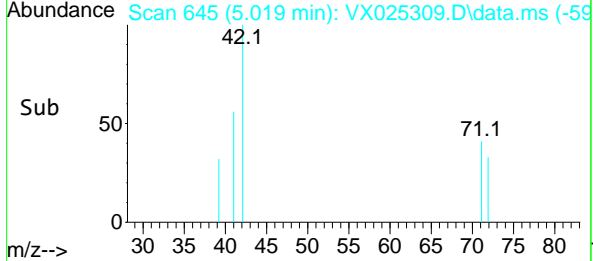
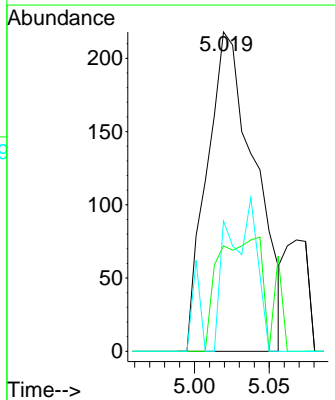
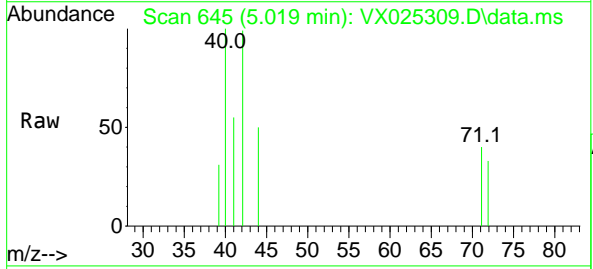
Instrument : MSVOA\_X  
 ClientSampleId : PB140964ZHE#01

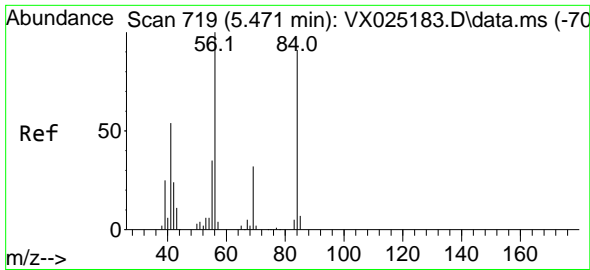
Tgt Ion	Resp	Ion Ratio	Lower	Upper
43	2659	100		
72		22.9	21.2	31.8



#29  
 Tetrahydrofuran  
 Concen: 0.931 ug/l  
 RT: 5.019 min Scan# 645  
 Delta R.T. 0.012 min  
 Lab File: VX025309.D  
 Acq: 24 Nov 2021 05:04

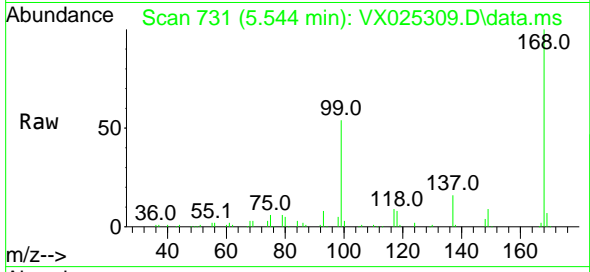
Tgt Ion	Resp	Ion Ratio	Lower	Upper
42	487	100		
72		0.0	36.1	54.1#
71		4.7	33.7	50.5#



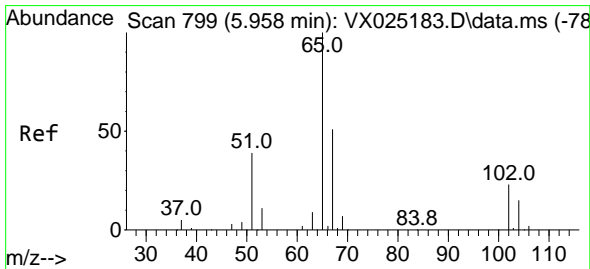
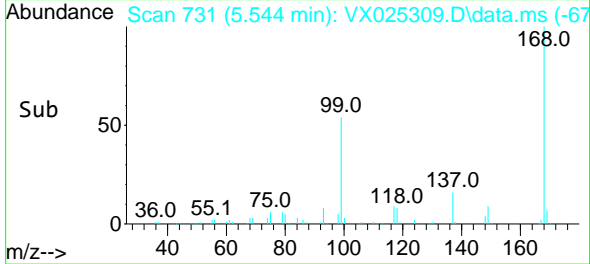
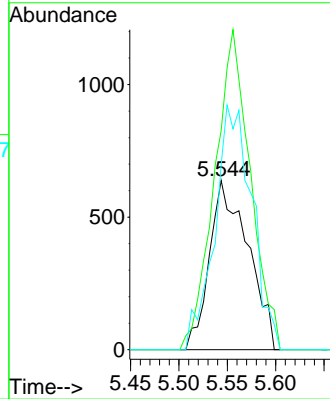


#31  
 Cyclohexane  
 Concen: 1.085 ug/l  
 RT: 5.544 min Scan# 719  
 Delta R.T. 0.073 min  
 Lab File: VX025309.D  
 Acq: 24 Nov 2021 05:04

Instrument : MSVOA\_X  
 ClientSampleId : PB140964ZHE#01

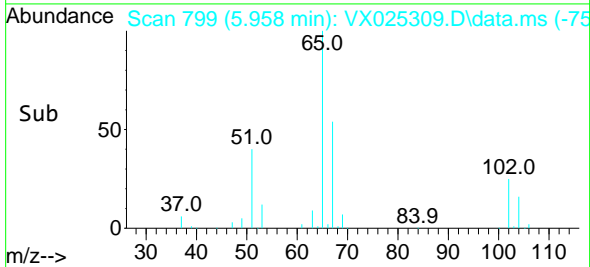
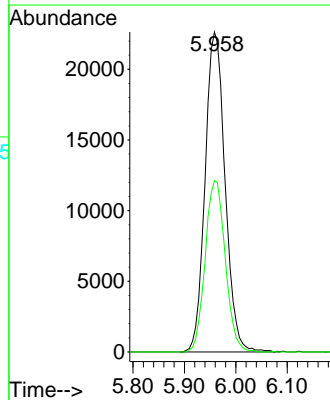
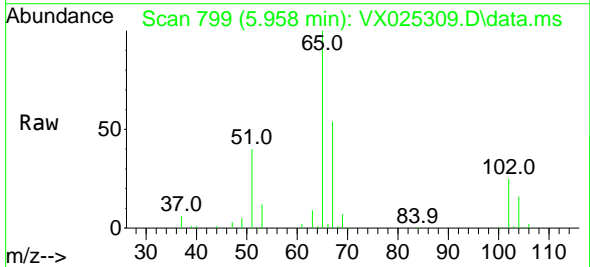


Tgt Ion: 56 Resp: 1764  
 Ion Ratio Lower Upper  
 56 100  
 69 129.5 24.2 36.2#  
 84 109.4 71.5 107.3#

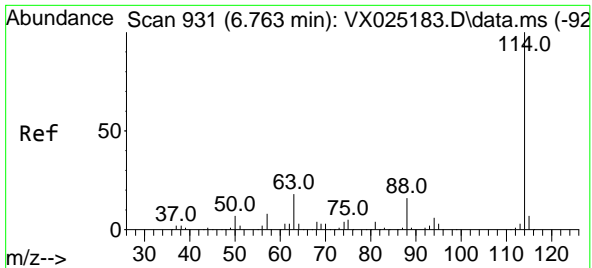


#33  
 1,2-Dichloroethane-d4  
 Concen: 58.083 ug/l  
 RT: 5.958 min Scan# 799  
 Delta R.T. 0.000 min  
 Lab File: VX025309.D  
 Acq: 24 Nov 2021 05:04

Tgt Ion: 65 Resp: 61083  
 Ion Ratio Lower Upper  
 65 100  
 67 53.9 0.0 101.0





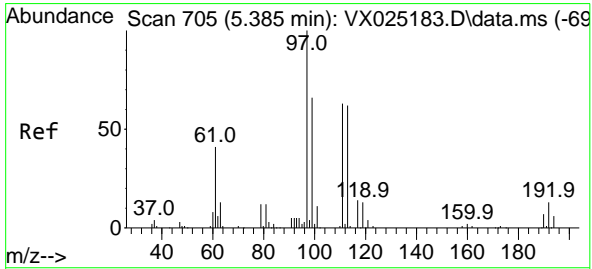
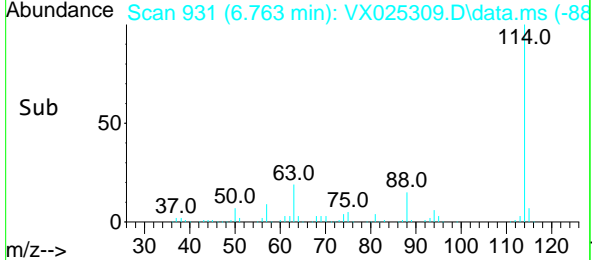
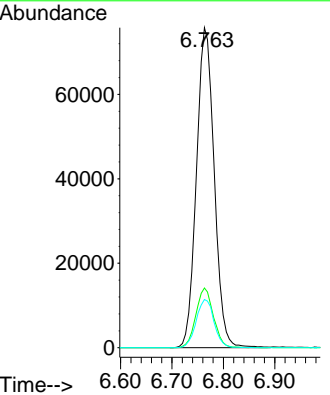
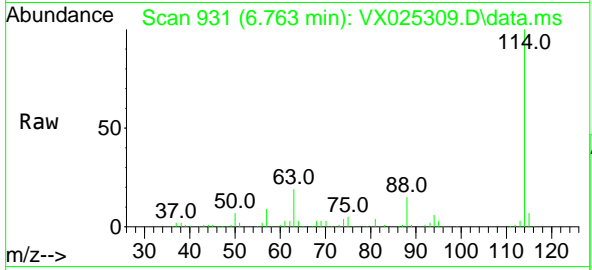


#34  
 1,4-Difluorobenzene  
 Concen: 50.000 ug/l  
 RT: 6.763 min Scan# 91  
 Delta R.T. -0.000 min  
 Lab File: VX025309.D  
 Acq: 24 Nov 2021 05:04

Instrument : MSVOA\_X  
 ClientSampleId : PB140964ZHE#01

Tgt Ion:114 Resp: 182155

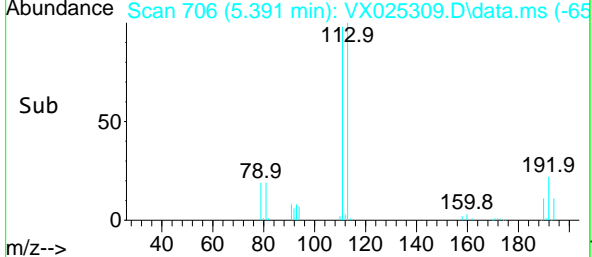
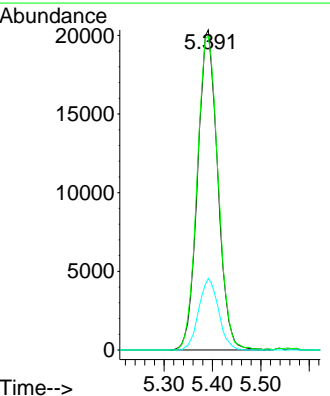
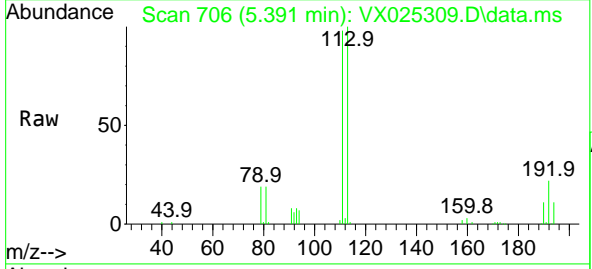
Ion	Ratio	Lower	Upper
114	100		
63	18.6	0.0	41.0
88	15.1	0.0	34.8

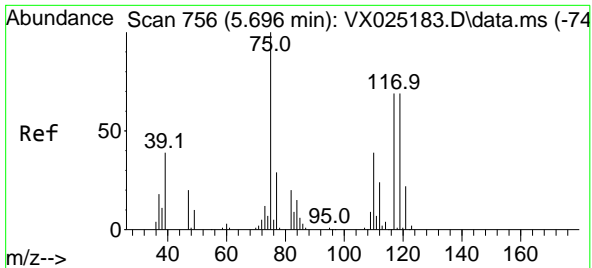


#35  
 Dibromofluoromethane  
 Concen: 52.536 ug/l  
 RT: 5.391 min Scan# 706  
 Delta R.T. 0.006 min  
 Lab File: VX025309.D  
 Acq: 24 Nov 2021 05:04

Tgt Ion:113 Resp: 58717

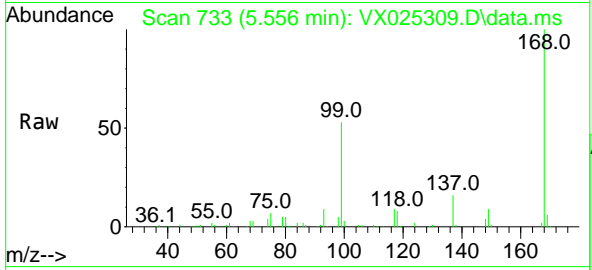
Ion	Ratio	Lower	Upper
113	100		
111	101.8	82.1	123.1
192	21.9	15.6	23.4



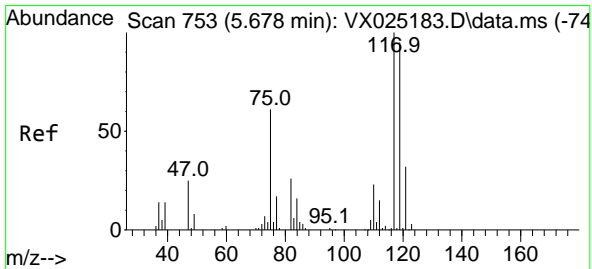
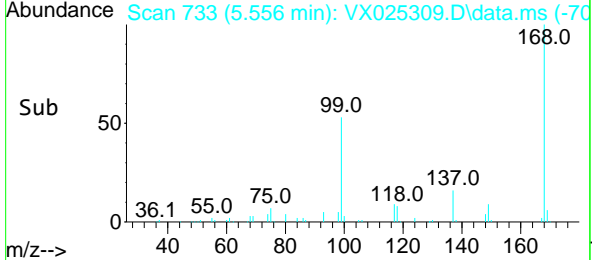
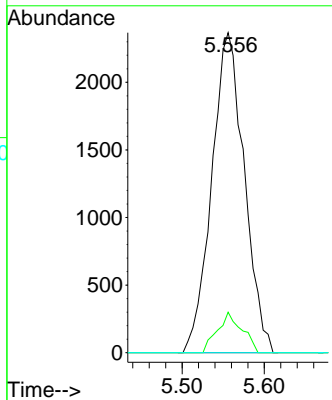


#36  
 1,1-Dichloropropene  
 Concen: 4.094 ug/l  
 RT: 5.556 min Scan# 711  
 Delta R.T. -0.140 min  
 Lab File: VX025309.D  
 Acq: 24 Nov 2021 05:04

Instrument : MSVOA\_X  
 ClientSampleId : PB140964ZHE#01

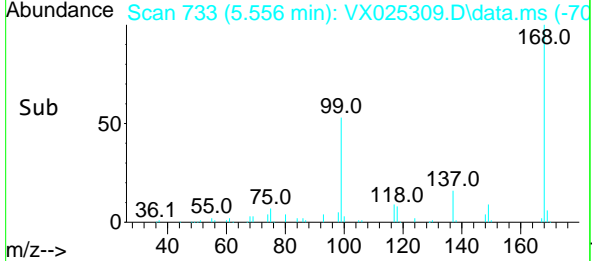
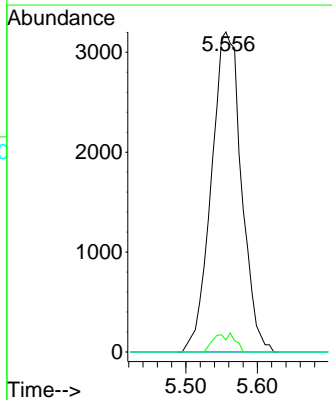
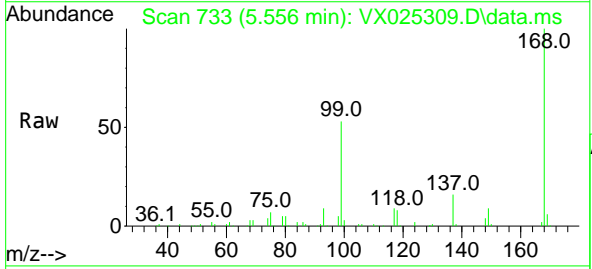


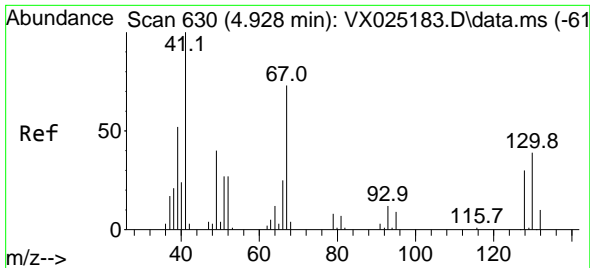
Tgt Ion: 75 Resp: 6506  
 Ion Ratio Lower Upper  
 75 100  
 110 9.5 18.1 54.3#  
 77 0.0 24.4 36.6#



#38  
 Carbon Tetrachloride  
 Concen: 5.359 ug/l  
 RT: 5.556 min Scan# 733  
 Delta R.T. -0.122 min  
 Lab File: VX025309.D  
 Acq: 24 Nov 2021 05:04

Tgt Ion: 117 Resp: 9381  
 Ion Ratio Lower Upper  
 117 100  
 119 3.7 75.6 113.4#  
 121 0.0 23.7 35.5#

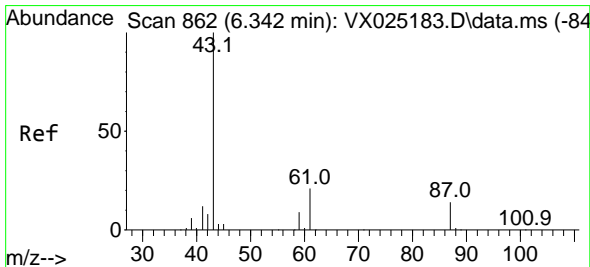
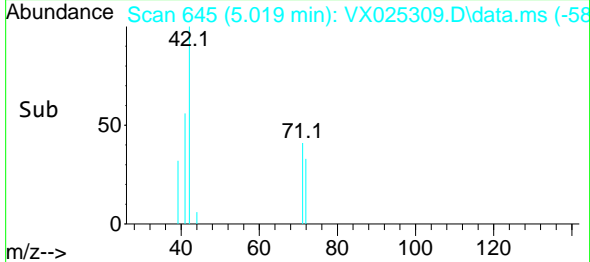
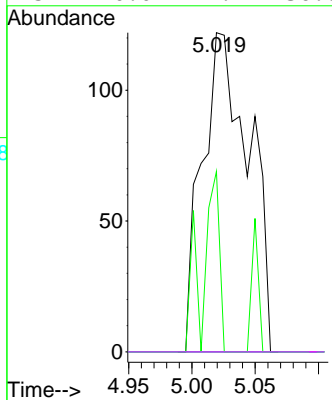
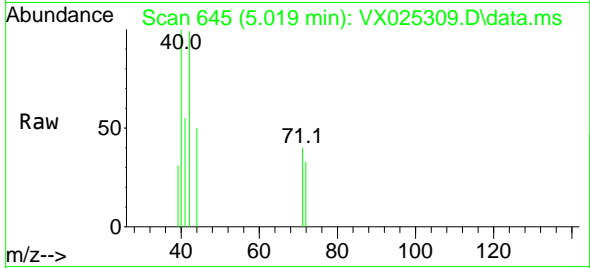




#41  
 Methacrylonitrile  
 Concen: 0.312 ug/l  
 RT: 5.019 min Scan# 645  
 Delta R.T. 0.091 min  
 Lab File: VX025309.D  
 Acq: 24 Nov 2021 05:04

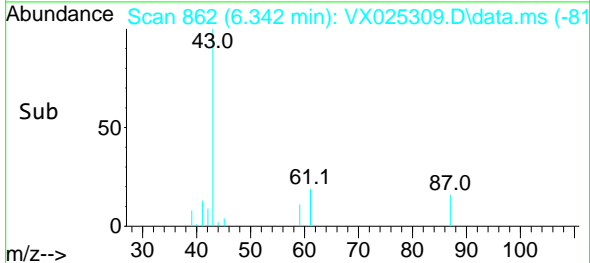
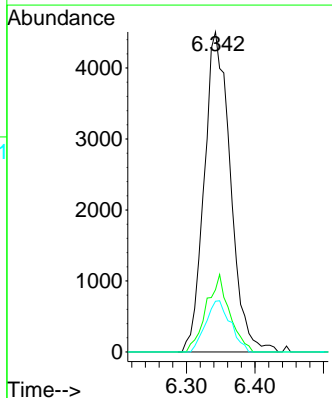
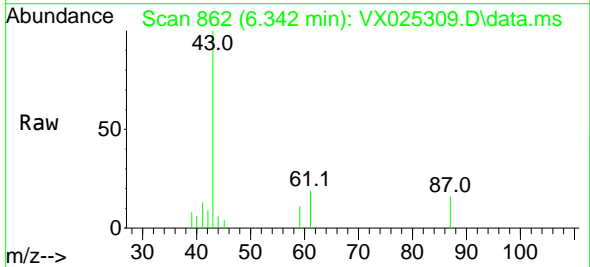
Instrument : MSVOA\_X  
 ClientSampleId : PB140964ZHE#01

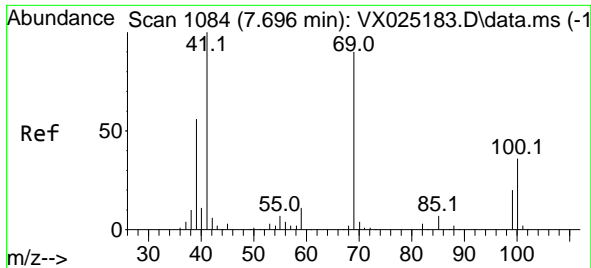
Tgt Ion	Resp	Lower	Upper
41	100		
39	20.8	44.6	67.0#
67	0.0	56.7	85.1#
52	0.0	24.4	36.6#



#43  
 Isopropyl Acetate  
 Concen: 3.984 ug/l  
 RT: 6.342 min Scan# 862  
 Delta R.T. 0.000 min  
 Lab File: VX025309.D  
 Acq: 24 Nov 2021 05:04

Tgt Ion	Resp	Lower	Upper
43	100		
61	21.5	15.3	22.9
87	15.1	10.9	16.3

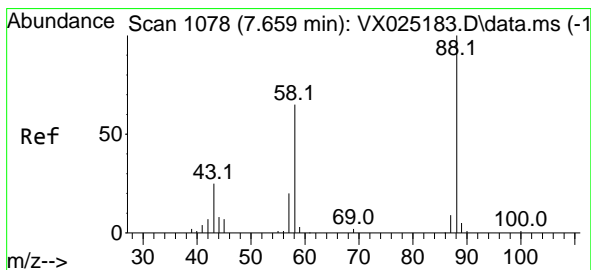
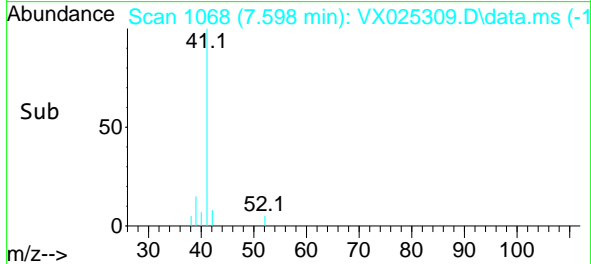
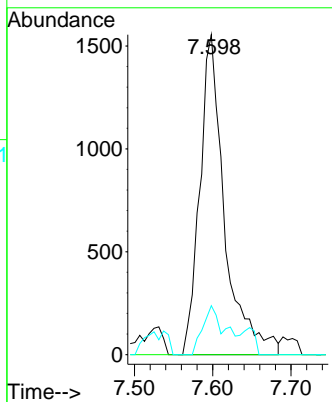
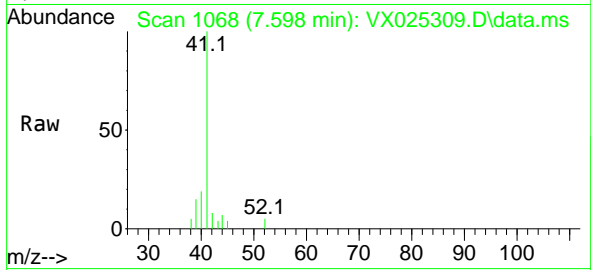




#48  
 Methyl methacrylate  
 Concen: 2.422 ug/l  
 RT: 7.598 min Scan# 1068  
 Delta R.T. -0.098 min  
 Lab File: VX025309.D  
 Acq: 24 Nov 2021 05:04

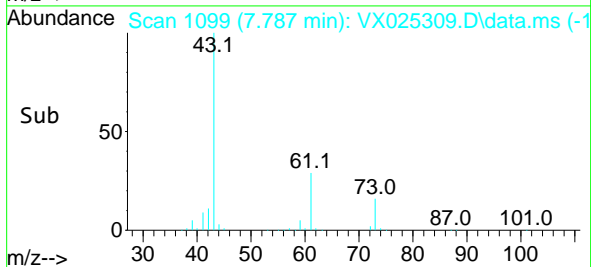
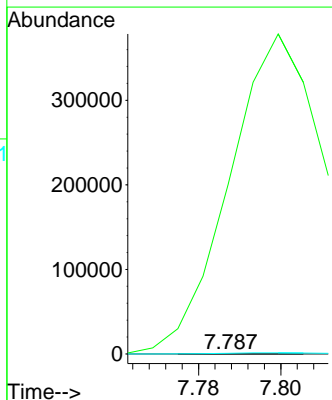
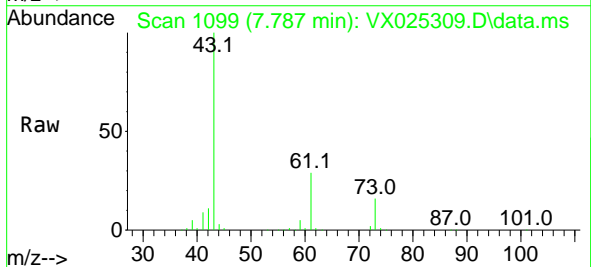
Instrument : MSVOA\_X  
 ClientSampleId : PB140964ZHE#01

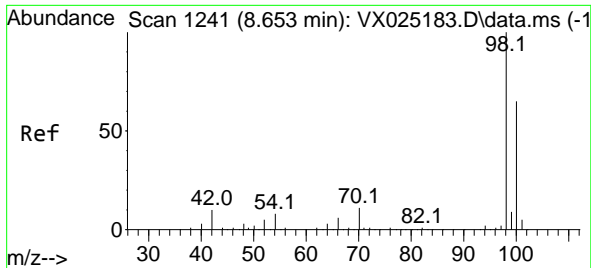
Tgt Ion: 41 Resp: 3420  
 Ion Ratio Lower Upper  
 41 100  
 69 0.0 64.5 96.7#  
 39 0.0 46.9 70.3#



#49  
 1,4-Dioxane  
 Concen: 1.241 ug/l  
 RT: 7.787 min Scan# 1099  
 Delta R.T. 0.128 min  
 Lab File: VX025309.D  
 Acq: 24 Nov 2021 05:04

Tgt Ion: 88 Resp: 37  
 Ion Ratio Lower Upper  
 88 100  
 43 1726754.1 27.0 40.6#  
 58 6637.8 55.2 82.8#

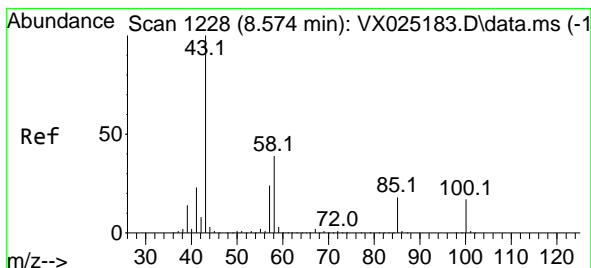
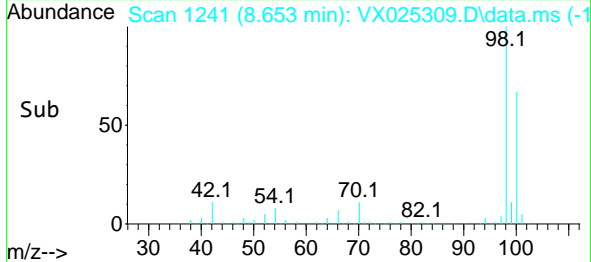
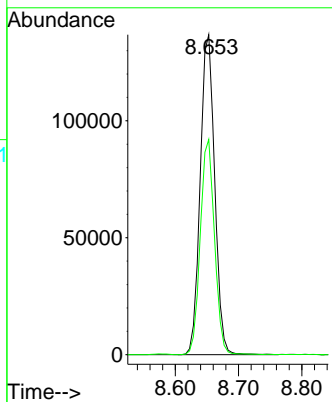
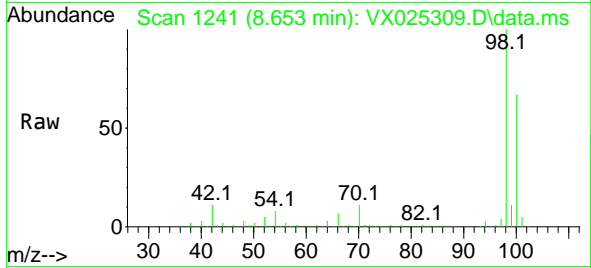




#50  
 Toluene-d8  
 Concen: 51.938 ug/l  
 RT: 8.653 min Scan# 11  
 Delta R.T. -0.000 min  
 Lab File: VX025309.D  
 Acq: 24 Nov 2021 05:04

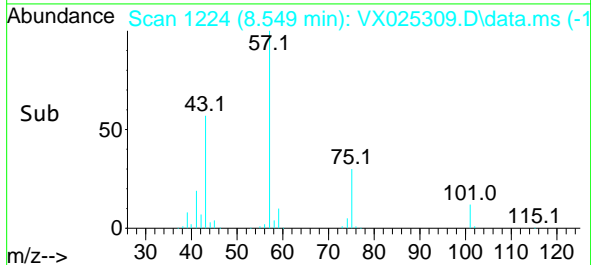
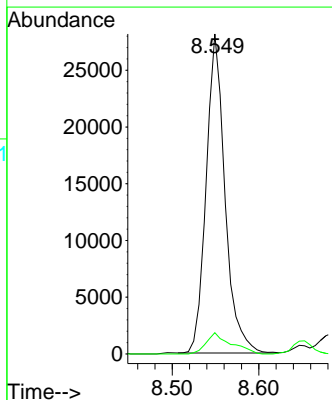
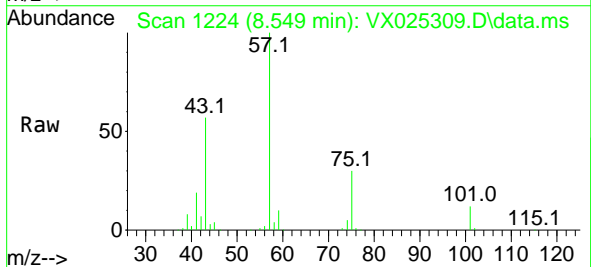
Instrument :  
 MSVOA\_X  
 ClientSampleId :  
 PB140964ZHE#01

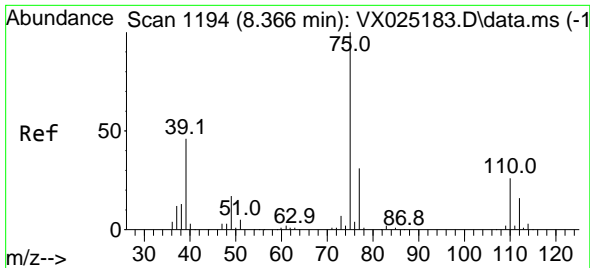
Tgt Ion: 98 Resp: 218254  
 Ion Ratio Lower Upper  
 98 100  
 100 66.2 51.4 77.0



#51  
 4-Methyl-2-Pentanone  
 Concen: 22.531 ug/l  
 RT: 8.549 min Scan# 1224  
 Delta R.T. -0.025 min  
 Lab File: VX025309.D  
 Acq: 24 Nov 2021 05:04

Tgt Ion: 43 Resp: 42514  
 Ion Ratio Lower Upper  
 43 100  
 58 8.7 30.9 46.3#



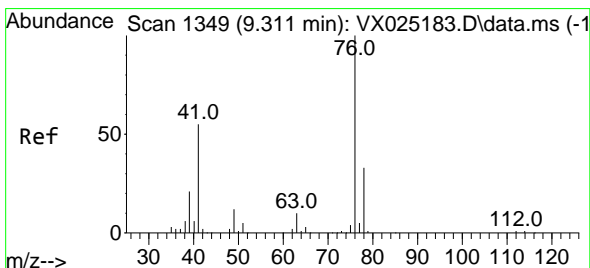
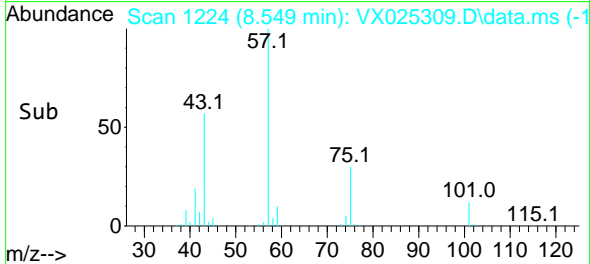
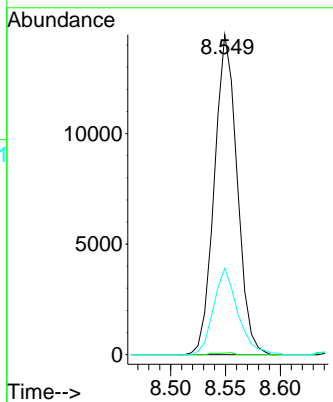
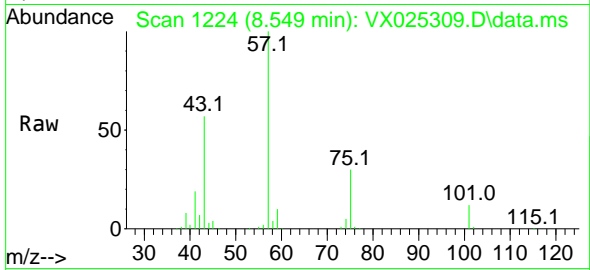


#54  
 cis-1,3-Dichloropropene  
 Concen: 10.298 ug/l  
 RT: 8.549 min Scan# 1194  
 Delta R.T. 0.183 min  
 Lab File: VX025309.D  
 Acq: 24 Nov 2021 05:04

Instrument : MSVOA\_X  
 ClientSampleId : PB140964ZHE#01

Tgt Ion: 75 Resp: 20939

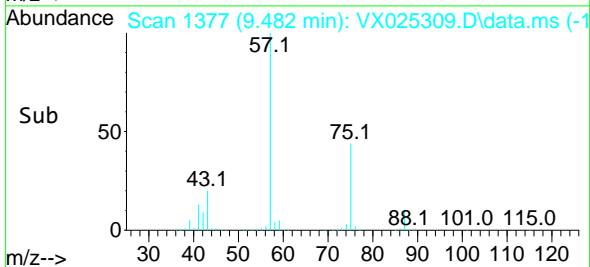
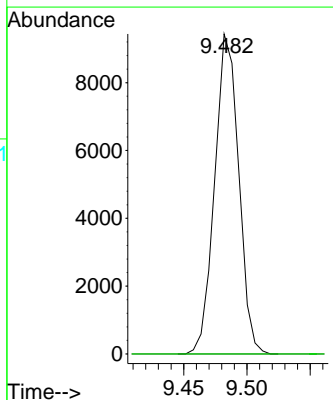
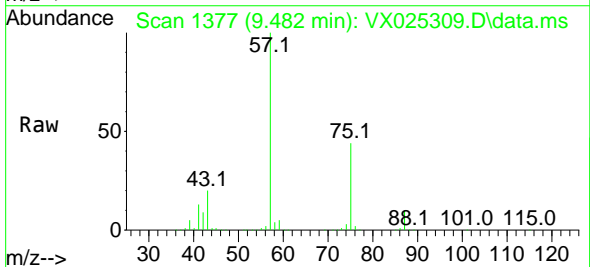
Ion	Ratio	Lower	Upper
75	100		
77	0.5	23.8	35.8#
39	26.9	38.8	58.2#

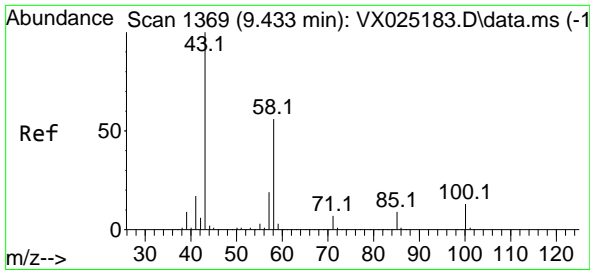


#57  
 1,3-Dichloropropane  
 Concen: 6.006 ug/l  
 RT: 9.482 min Scan# 1377  
 Delta R.T. 0.171 min  
 Lab File: VX025309.D  
 Acq: 24 Nov 2021 05:04

Tgt Ion: 76 Resp: 12436

Ion	Ratio	Lower	Upper
76	100		
78	0.0	25.8	38.8#

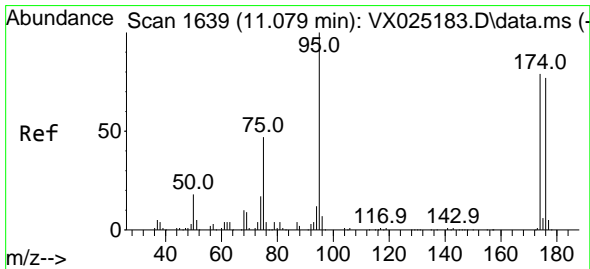
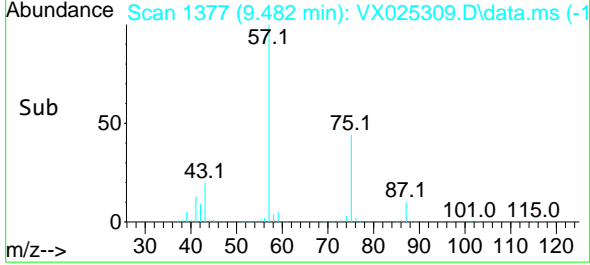
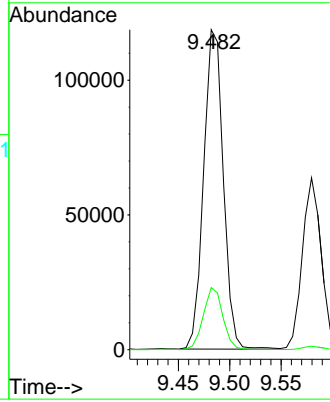
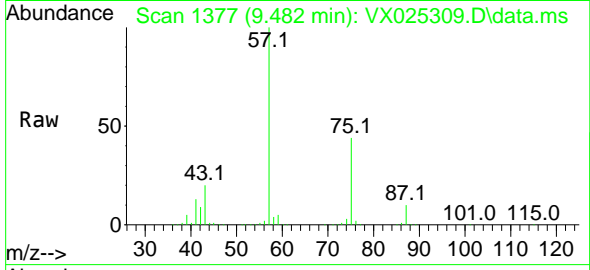




#59  
 2-Hexanone  
 Concen: 105.935 ug/l  
 RT: 9.482 min Scan# 11  
 Delta R.T. 0.049 min  
 Lab File: VX025309.D  
 Acq: 24 Nov 2021 05:04

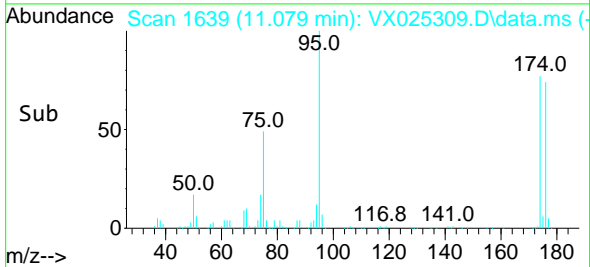
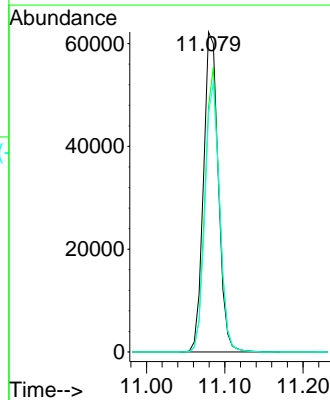
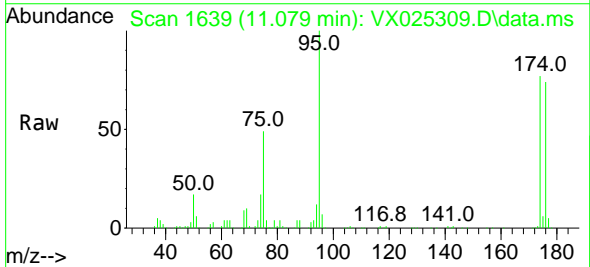
Instrument : MSVOA\_X  
 ClientSampleId : PB140964ZHE#01

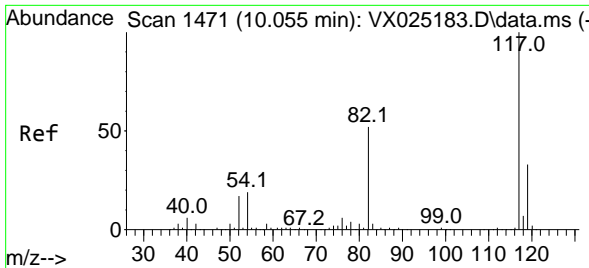
Tgt Ion: 43 Resp: 157586  
 Ion Ratio Lower Upper  
 43 100  
 58 19.4 26.6 79.7#



#62  
 4-Bromofluorobenzene  
 Concen: 51.438 ug/l  
 RT: 11.079 min Scan# 1639  
 Delta R.T. 0.000 min  
 Lab File: VX025309.D  
 Acq: 24 Nov 2021 05:04

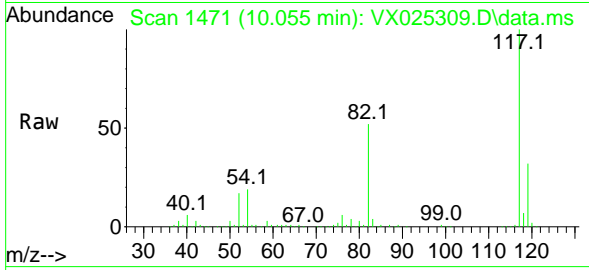
Tgt Ion: 95 Resp: 81773  
 Ion Ratio Lower Upper  
 95 100  
 174 86.2 0.0 158.0  
 176 83.0 0.0 153.6





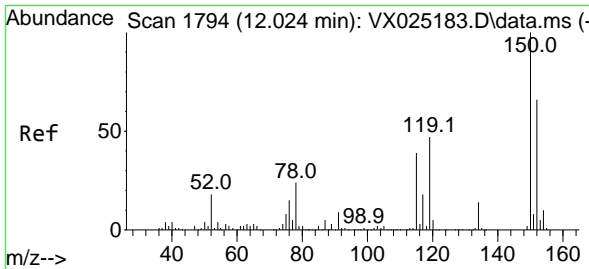
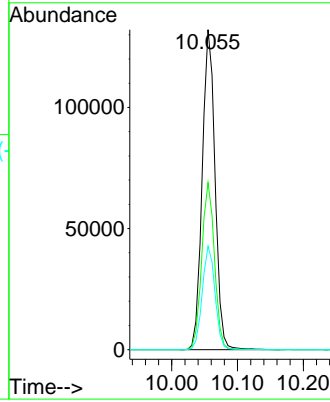
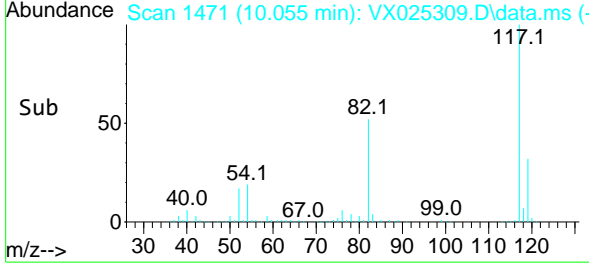
#63  
 Chlorobenzene-d5  
 Concen: 50.000 ug/l  
 RT: 10.055 min Scan# 1471  
 Delta R.T. 0.000 min  
 Lab File: VX025309.D  
 Acq: 24 Nov 2021 05:04

Instrument : MSVOA\_X  
 ClientSampleId : PB140964ZHE#01

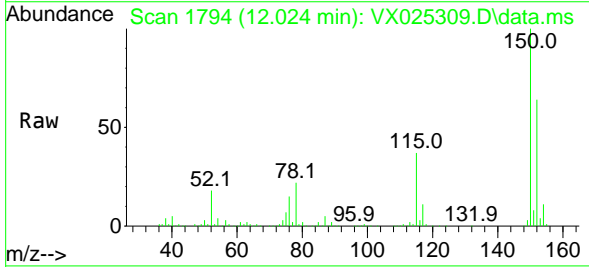


Tgt Ion:117 Resp: 178933

Ion	Ratio	Lower	Upper
117	100		
82	52.2	44.6	67.0
119	32.3	24.8	37.2

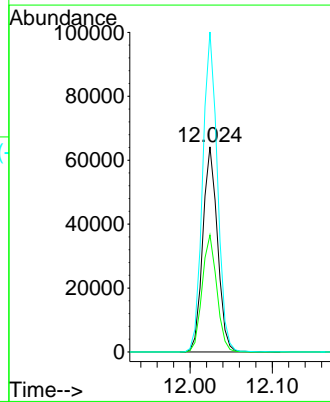
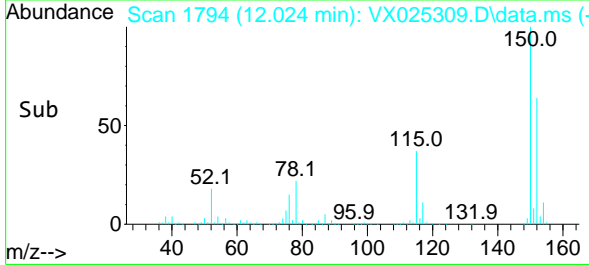


#72  
 1,4-Dichlorobenzene-d4  
 Concen: 50.000 ug/l  
 RT: 12.024 min Scan# 1794  
 Delta R.T. 0.000 min  
 Lab File: VX025309.D  
 Acq: 24 Nov 2021 05:04

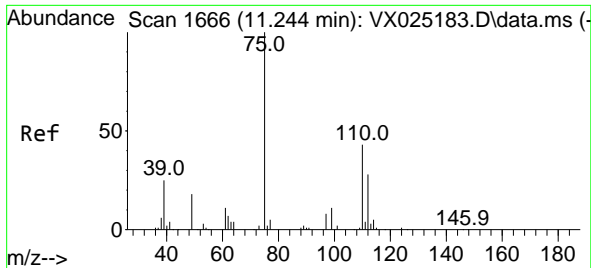


Tgt Ion:152 Resp: 79860

Ion	Ratio	Lower	Upper
152	100		
115	56.7	43.3	129.8
150	156.1	0.0	351.2



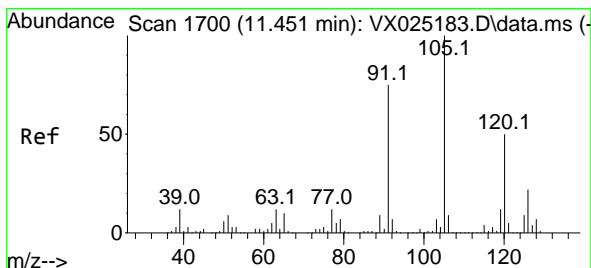
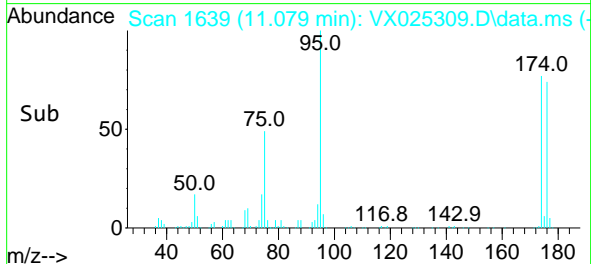
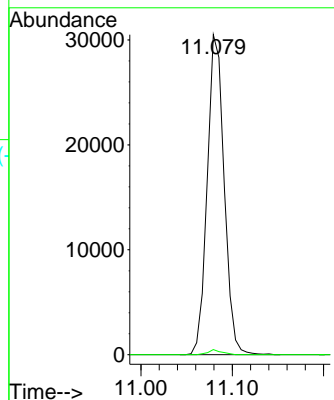
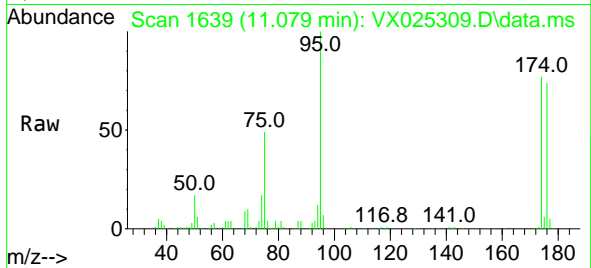




#76  
 1,2,3-Trichloropropane  
 Concen: 24.003 ug/l  
 RT: 11.079 min Scan# 110  
 Delta R.T. -0.165 min  
 Lab File: VX025309.D  
 Acq: 24 Nov 2021 05:04

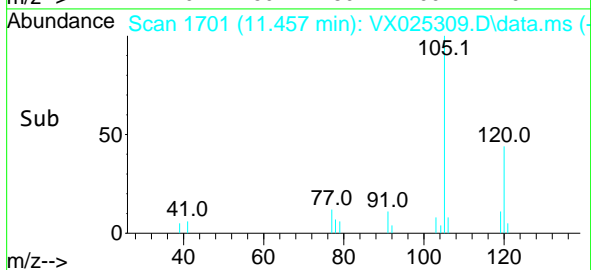
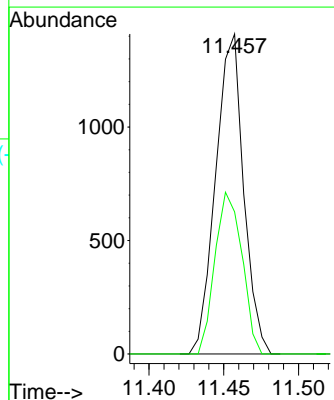
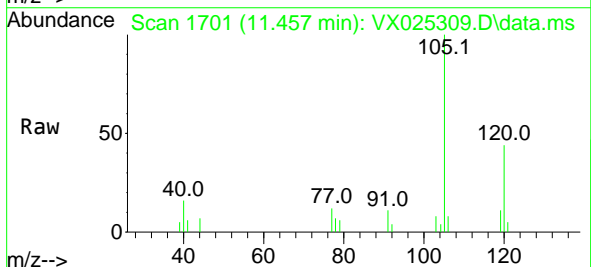
Instrument : MSVOA\_X  
 ClientSampleId : PB140964ZHE#01

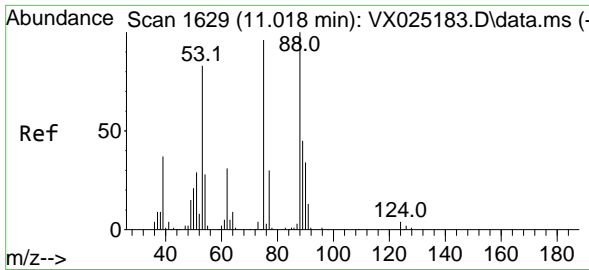
Tgt Ion: 75 Resp: 39254  
 Ion Ratio Lower Upper  
 75 100  
 77 1.3 20.0 59.9#



#80  
 1,3,5-Trimethylbenzene  
 Concen: 0.383 ug/l  
 RT: 11.457 min Scan# 1701  
 Delta R.T. 0.006 min  
 Lab File: VX025309.D  
 Acq: 24 Nov 2021 05:04

Tgt Ion:105 Resp: 1832  
 Ion Ratio Lower Upper  
 105 100  
 120 48.9 23.8 71.5

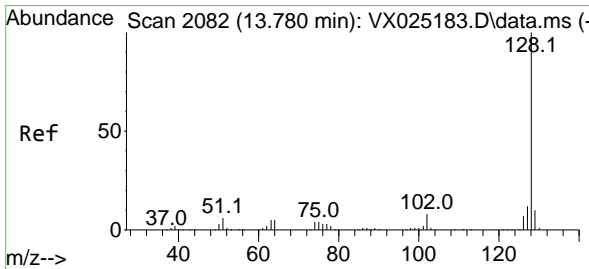
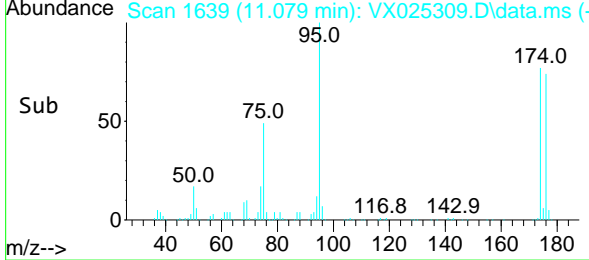
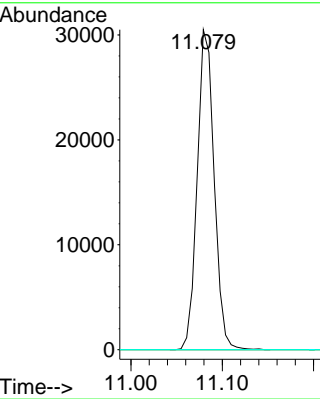
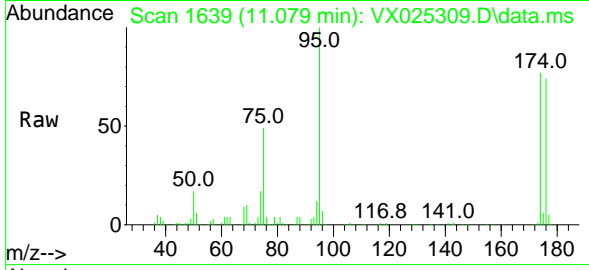




#81  
 trans-1,4-Dichloro-2-butene  
 Concen: 60.468 ug/l  
 RT: 11.079 min Scan# 11  
 Delta R.T. 0.061 min  
 Lab File: VX025309.D  
 Acq: 24 Nov 2021 05:04

Instrument : MSVOA\_X  
 ClientSampleId : PB140964ZHE#01

Tgt Ion: 75 Resp: 39254  
 Ion Ratio Lower Upper  
 75 100  
 53 0.0 81.9 122.9#  
 89 0.0 38.2 57.2#



#95  
 Naphthalene  
 Concen: Below Cal  
 RT: 13.780 min Scan# 2082  
 Delta R.T. -0.000 min  
 Lab File: VX025309.D  
 Acq: 24 Nov 2021 05:04

Tgt Ion:128 Resp: 123  
 Ion Ratio Lower Upper  
 128 100  
 127 0.0 10.3 15.5#  
 129 0.0 8.8 13.2#

