

Data Path : Z:\voasrv\HPCHEM1\MSVOA_X\Data\VX112421\
 Data File : VX025331.D
 Acq On : 24 Nov 2021 16:59
 Operator : JC/MD
 Sample : M4803-06 40X
 Misc : 5.0mL/MSVOA_X/WATER
 ALS Vial : 18 Sample Multiplier: 1

Instrument :
 MSVOA_X
 ClientSampleId :
 261-262

Quant Time: Nov 26 10:36:41 2021
 Quant Method : Z:\voasrv\HPCHEM1\MSVOA_X\Method\82X111721W.M
 Quant Title : SW846 8260
 QLast Update : Wed Nov 17 15:36:16 2021
 Response via : Initial Calibration

Compound	R.T.	QIon	Response	Conc	Units	Dev(Min)

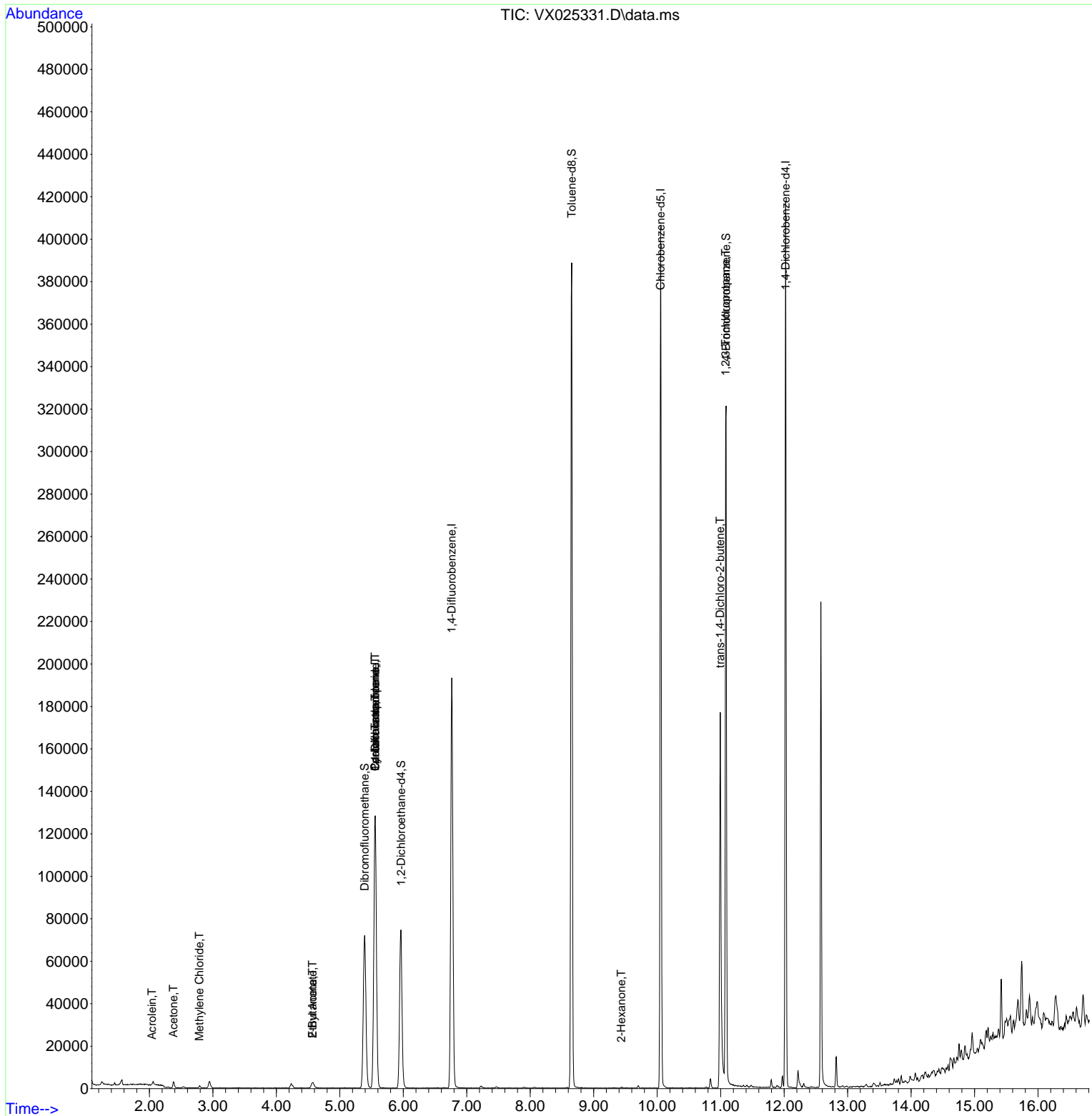
Internal Standards						
1) Pentafluorobenzene	5.556	168	131443	50.000	ug/l	0.00
34) 1,4-Difluorobenzene	6.763	114	206294	50.000	ug/l	0.00
63) Chlorobenzene-d5	10.055	117	186330	50.000	ug/l	0.00
72) 1,4-Dichlorobenzene-d4	12.024	152	86422	50.000	ug/l	0.00
System Monitoring Compounds						
33) 1,2-Dichloroethane-d4	5.964	65	69941	50.481	ug/l	0.00
Spiked Amount	50.000	Range 78 - 117	Recovery	=	100.960%	
35) Dibromofluoromethane	5.391	113	63177	49.913	ug/l	0.00
Spiked Amount	50.000	Range 75 - 124	Recovery	=	99.820%	
50) Toluene-d8	8.653	98	238223	50.057	ug/l	0.00
Spiked Amount	50.000	Range 92 - 112	Recovery	=	100.120%	
62) 4-Bromofluorobenzene	11.085	95	84667	47.027	ug/l	0.00
Spiked Amount	50.000	Range 83 - 123	Recovery	=	94.060%	
Target Compounds						
						Qvalue
11) Tert butyl alcohol	2.941	59	2034	Below Cal	#	72
13) Acrolein	2.038	56	65	1.024	ug/l #	59
16) Acetone	2.380	43	3054	3.967	ug/l	100
20) Methylene Chloride	2.788	84	542	0.375	ug/l #	78
25) 2-Butanone	4.568	43	1525	1.370	ug/l	99
31) Cyclohexane	5.556	56	2313	1.080	ug/l #	1
36) 1,1-Dichloropropene	5.556	75	8599	4.778	ug/l #	50
37) Ethyl Acetate	4.568	43	1525	0.745	ug/l #	68
38) Carbon Tetrachloride	5.556	117	12301	6.205	ug/l #	17
59) 2-Hexanone	9.433	43	351	0.208	ug/l	91
76) 1,2,3-Trichloropropane	11.079	75	41884	23.667	ug/l #	37
81) trans-1,4-Dichloro-2-b...	10.994	75	8373	11.919	ug/l #	21
95) Naphthalene	13.780	128	513	Below Cal	#	83

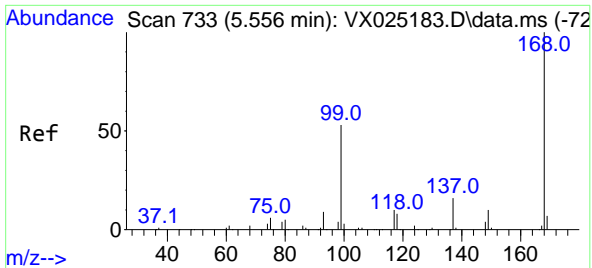
(#) = qualifier out of range (m) = manual integration (+) = signals summed

Data Path : Z:\voasrv\HPCHEM1\MSVOA_X\Data\VX112421\
 Data File : VX025331.D
 Acq On : 24 Nov 2021 16:59
 Operator : JC/MD
 Sample : M4803-06 40X
 Misc : 5.0mL/MSVOA_X/WATER
 ALS Vial : 18 Sample Multiplier: 1

Instrument :
 MSVOA_X
 ClientSampleId :
 261-262

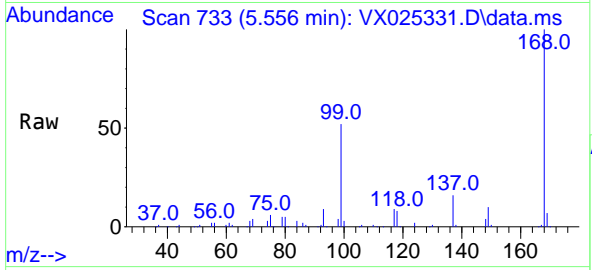
Quant Time: Nov 26 10:36:41 2021
 Quant Method : Z:\voasrv\HPCHEM1\MSVOA_X\Method\82X111721W.M
 Quant Title : SW846 8260
 QLast Update : Wed Nov 17 15:36:16 2021
 Response via : Initial Calibration



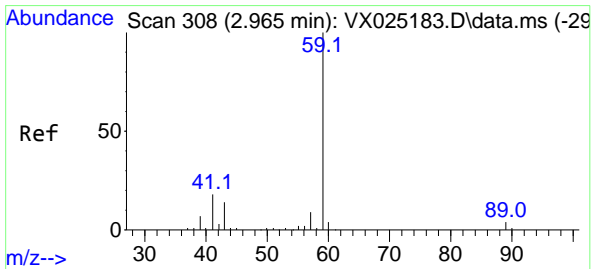
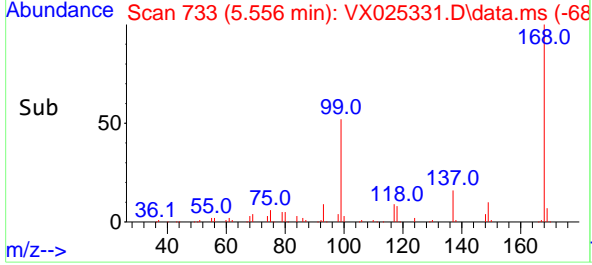
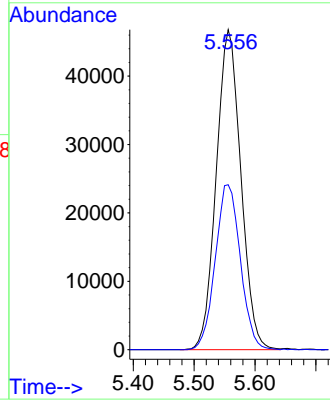


#1
 Pentafluorobenzene
 Concen: 50.000 ug/l
 RT: 5.556 min Scan# 71
 Delta R.T. -0.000 min
 Lab File: VX025331.D
 Acq: 24 Nov 2021 16:59

Instrument :
 MSVOA_X
 ClientSampleId :
 261-262

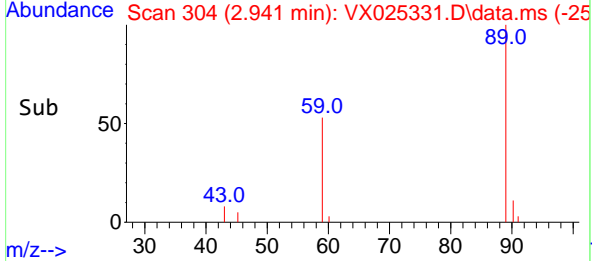
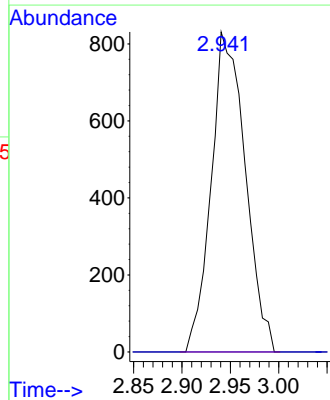
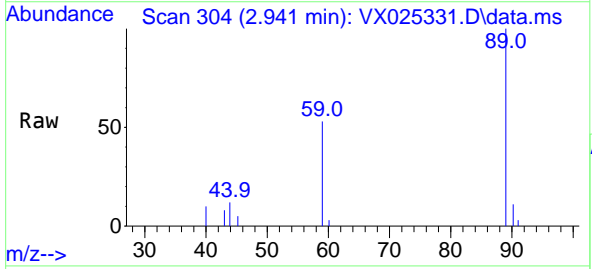


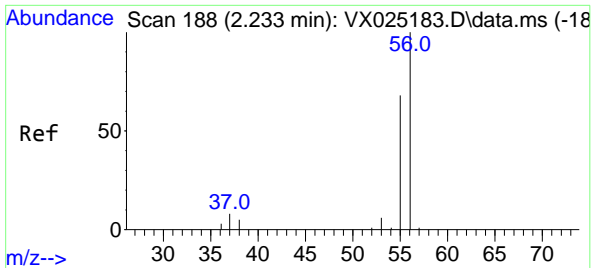
Tgt Ion:168 Resp: 131443
 Ion Ratio Lower Upper
 168 100
 99 51.6 46.4 69.6



#11
 Tert butyl alcohol
 Concen: Below Cal
 RT: 2.941 min Scan# 304
 Delta R.T. -0.024 min
 Lab File: VX025331.D
 Acq: 24 Nov 2021 16:59

Tgt Ion: 59 Resp: 2034
 Ion Ratio Lower Upper
 59 100
 57 0.0 8.5 12.7#

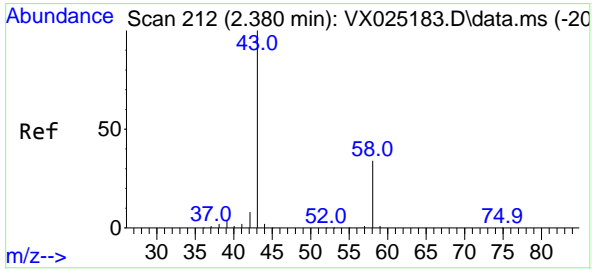
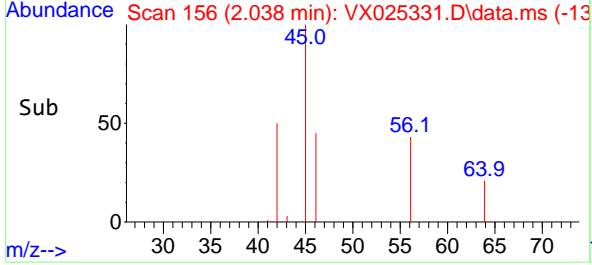
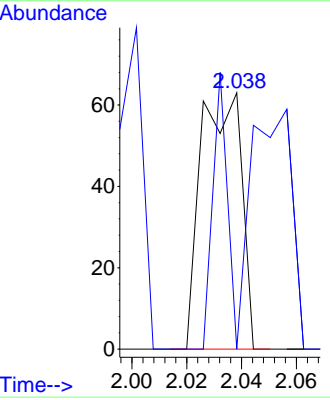
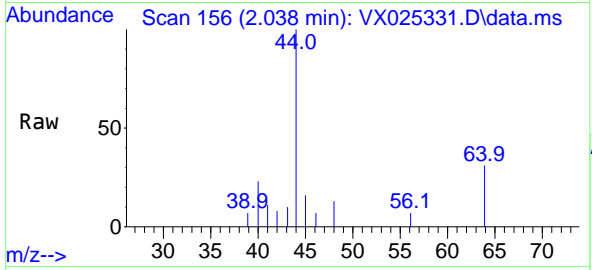




#13
 Acrolein
 Concen: 1.024 ug/l
 RT: 2.038 min Scan# 11
 Delta R.T. -0.195 min
 Lab File: VX025331.D
 Acq: 24 Nov 2021 16:59

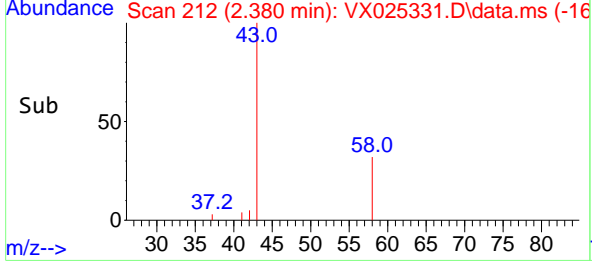
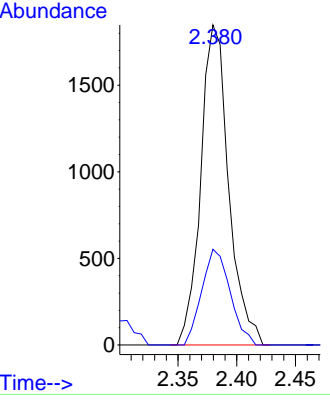
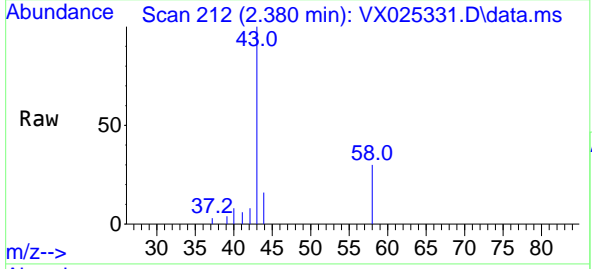
Instrument : MSVOA_X
 ClientSampleId : 261-262

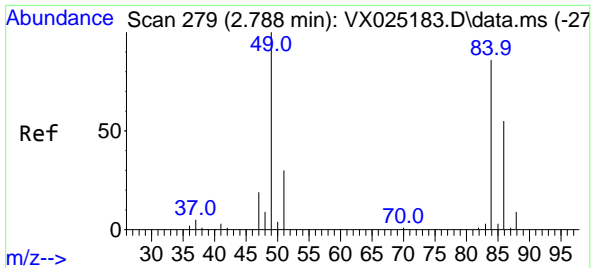
Tgt Ion: 56 Resp: 65
 Ion Ratio Lower Upper
 56 100
 55 38.5 58.6 87.8#



#16
 Acetone
 Concen: 3.967 ug/l
 RT: 2.380 min Scan# 212
 Delta R.T. -0.000 min
 Lab File: VX025331.D
 Acq: 24 Nov 2021 16:59

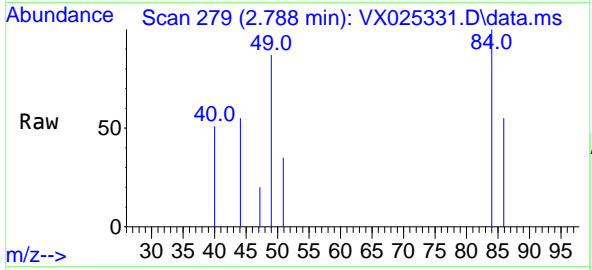
Tgt Ion: 43 Resp: 3054
 Ion Ratio Lower Upper
 43 100
 58 29.9 24.0 36.0





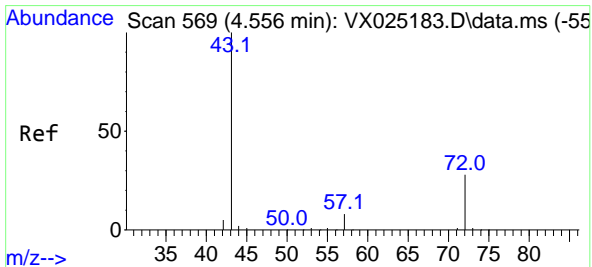
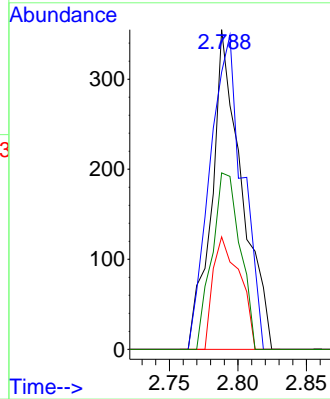
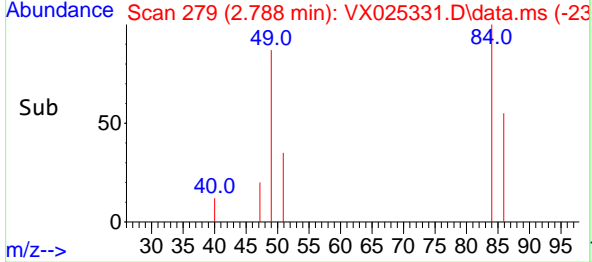
#20
 Methylene Chloride
 Concen: 0.375 ug/l
 RT: 2.788 min Scan# 21
 Delta R.T. 0.000 min
 Lab File: VX025331.D
 Acq: 24 Nov 2021 16:59

Instrument : MSVOA_X
 ClientSampleId : 261-262

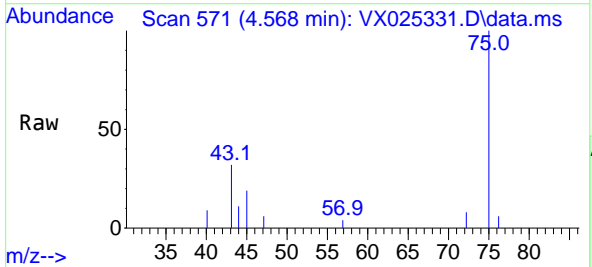


Tgt Ion: 84 Resp: 542

Ion	Ratio	Lower	Upper
84	100		
49	86.8	98.2	147.2#
51	35.2	30.2	45.4
86	55.2	52.2	78.2

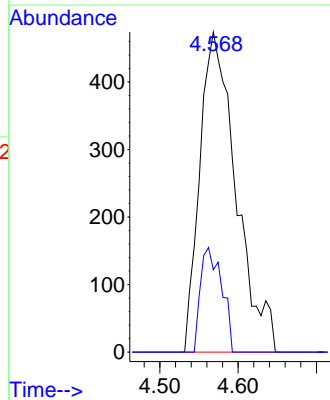
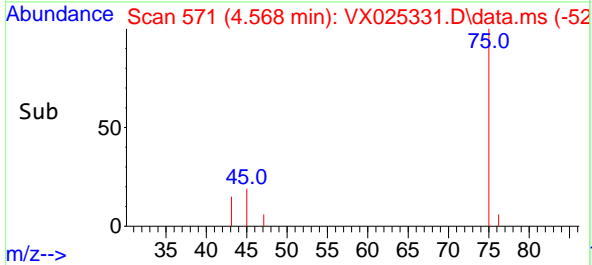


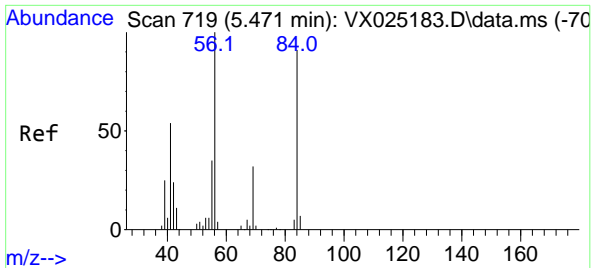
#25
 2-Butanone
 Concen: 1.370 ug/l
 RT: 4.568 min Scan# 571
 Delta R.T. 0.012 min
 Lab File: VX025331.D
 Acq: 24 Nov 2021 16:59



Tgt Ion: 43 Resp: 1525

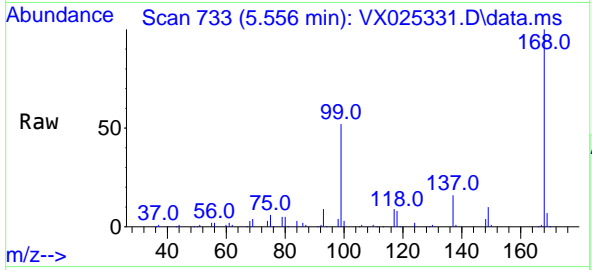
Ion	Ratio	Lower	Upper
43	100		
72	25.7	21.2	31.8



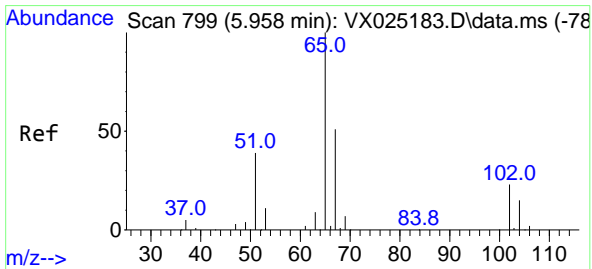
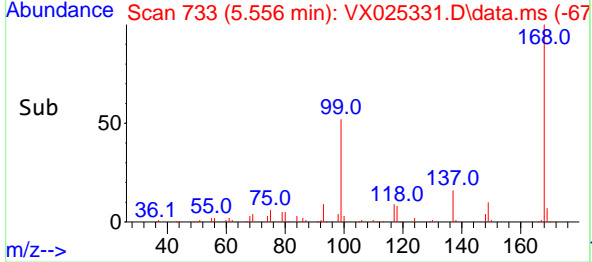
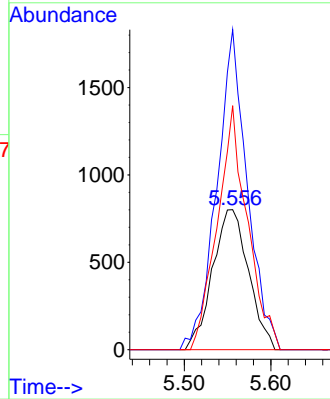


#31
 Cyclohexane
 Concen: 1.080 ug/l
 RT: 5.556 min Scan# 719
 Delta R.T. 0.085 min
 Lab File: VX025331.D
 Acq: 24 Nov 2021 16:59

Instrument : MSVOA_X
 ClientSampleId : 261-262

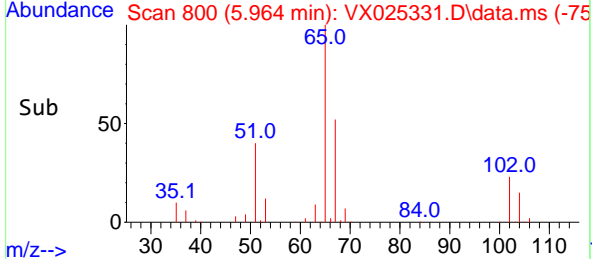
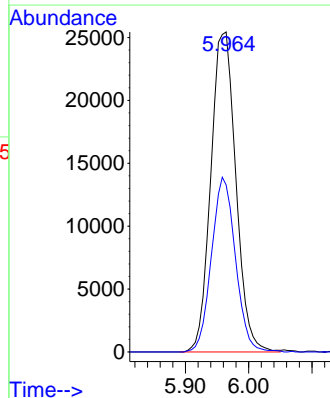
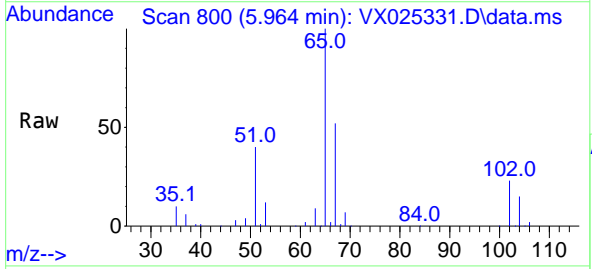


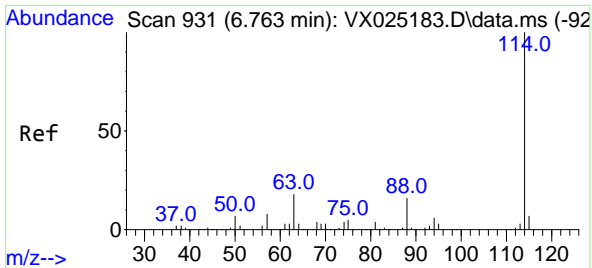
Tgt Ion: 56 Resp: 2313
 Ion Ratio Lower Upper
 56 100
 69 228.6 24.2 36.2#
 84 174.3 71.5 107.3#



#33
 1,2-Dichloroethane-d4
 Concen: 50.481 ug/l
 RT: 5.964 min Scan# 800
 Delta R.T. 0.006 min
 Lab File: VX025331.D
 Acq: 24 Nov 2021 16:59

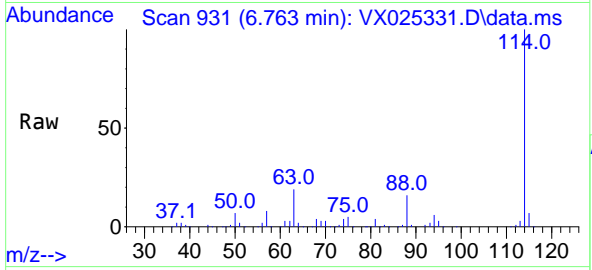
Tgt Ion: 65 Resp: 69941
 Ion Ratio Lower Upper
 65 100
 67 52.2 0.0 101.0



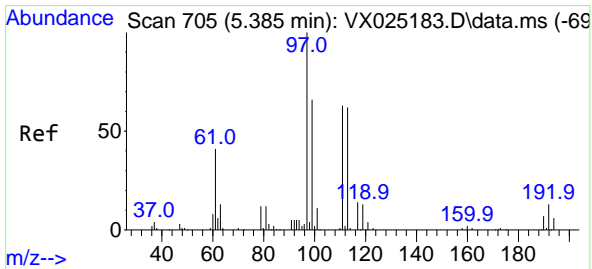
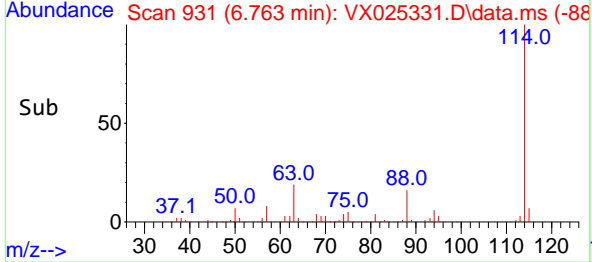
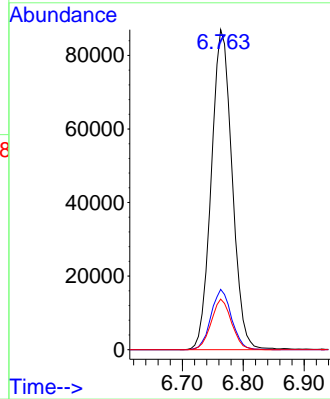


#34
 1,4-Difluorobenzene
 Concen: 50.000 ug/l
 RT: 6.763 min Scan# 91
 Delta R.T. -0.000 min
 Lab File: VX025331.D
 Acq: 24 Nov 2021 16:59

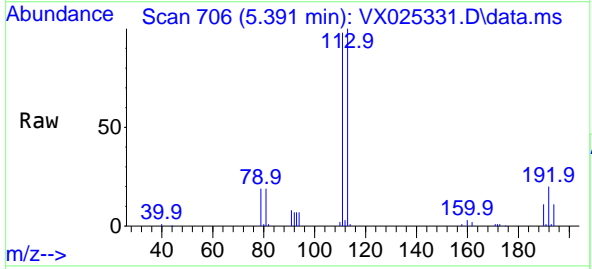
Instrument : MSVOA_X
 ClientSampleId : 261-262



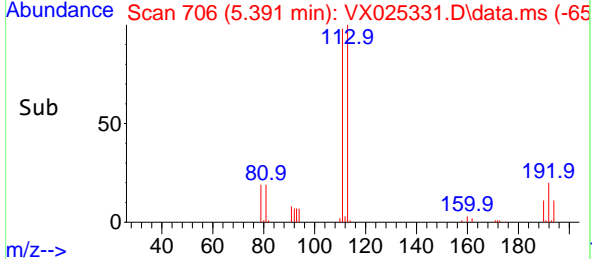
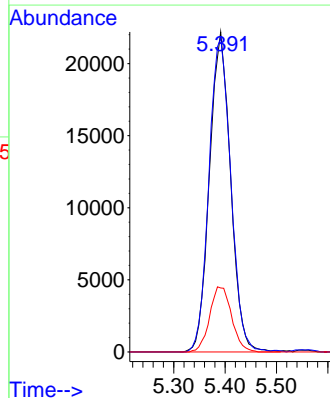
Tgt Ion:114 Resp: 206294
 Ion Ratio Lower Upper
 114 100
 63 18.9 0.0 41.0
 88 15.8 0.0 34.8

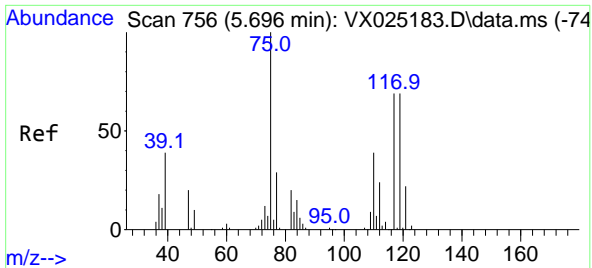


#35
 Dibromofluoromethane
 Concen: 49.913 ug/l
 RT: 5.391 min Scan# 706
 Delta R.T. 0.006 min
 Lab File: VX025331.D
 Acq: 24 Nov 2021 16:59



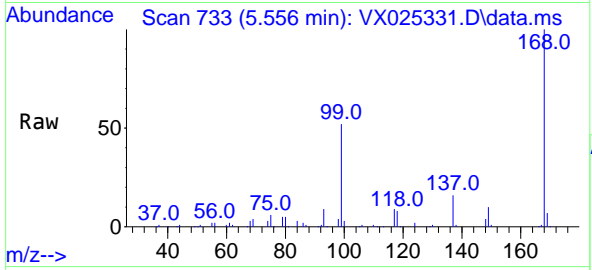
Tgt Ion:113 Resp: 63177
 Ion Ratio Lower Upper
 113 100
 111 101.6 82.1 123.1
 192 21.2 15.6 23.4



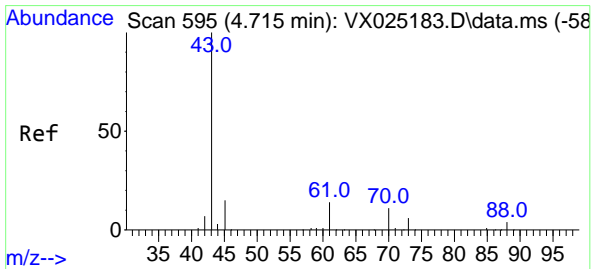
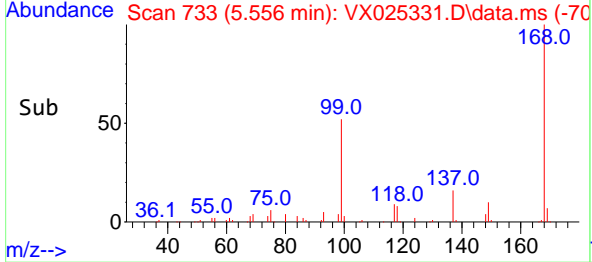
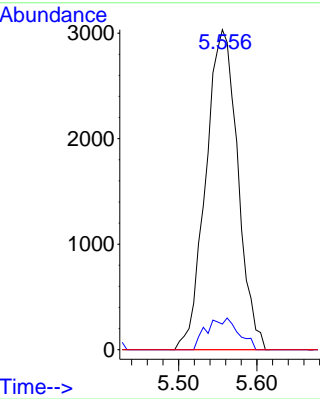


#36
 1,1-Dichloropropene
 Concen: 4.778 ug/l
 RT: 5.556 min Scan# 711
 Delta R.T. -0.140 min
 Lab File: VX025331.D
 Acq: 24 Nov 2021 16:59

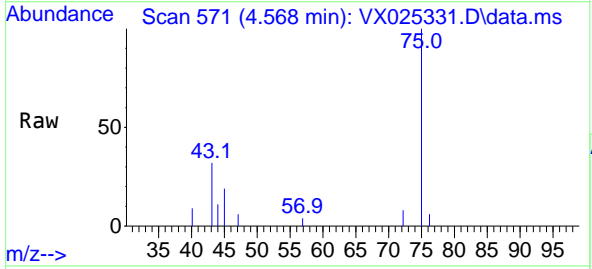
Instrument : MSVOA_X
 ClientSampleId : 261-262



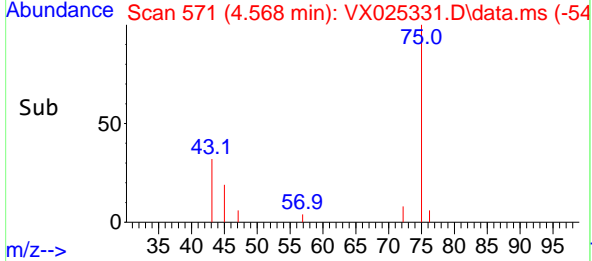
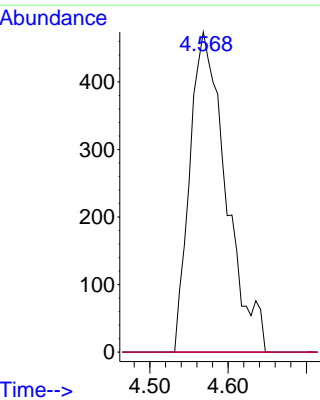
Tgt Ion: 75 Resp: 8599
 Ion Ratio Lower Upper
 75 100
 110 9.9 18.1 54.3#
 77 0.0 24.4 36.6#

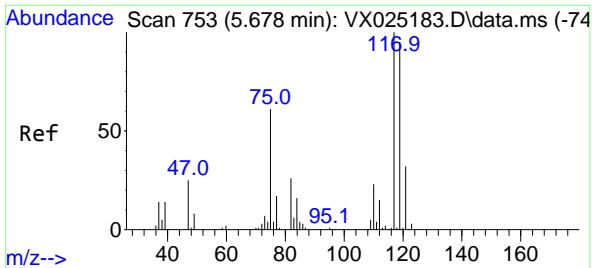


#37
 Ethyl Acetate
 Concen: 0.745 ug/l
 RT: 4.568 min Scan# 571
 Delta R.T. -0.147 min
 Lab File: VX025331.D
 Acq: 24 Nov 2021 16:59



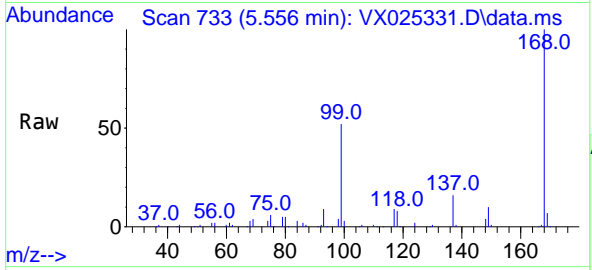
Tgt Ion: 43 Resp: 1525
 Ion Ratio Lower Upper
 43 100
 61 0.0 11.4 17.0#
 70 0.0 8.6 12.8#



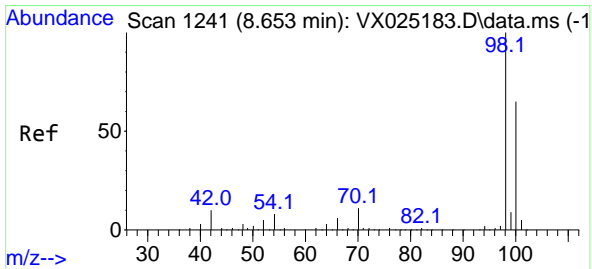
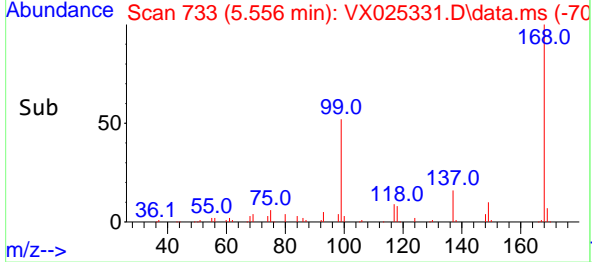
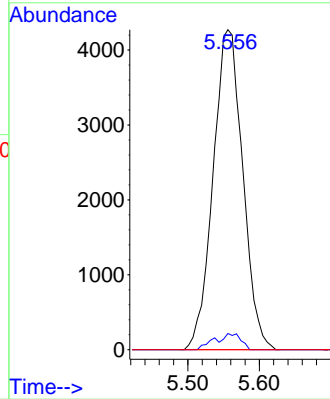


#38
 Carbon Tetrachloride
 Concen: 6.205 ug/l
 RT: 5.556 min Scan# 71
 Delta R.T. -0.122 min
 Lab File: VX025331.D
 Acq: 24 Nov 2021 16:59

Instrument : MSVOA_X
 ClientSampleId : 261-262

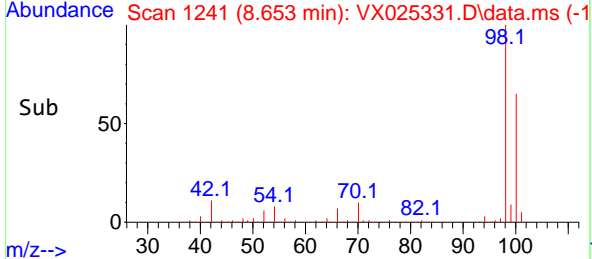
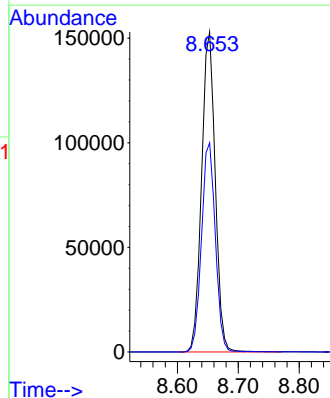
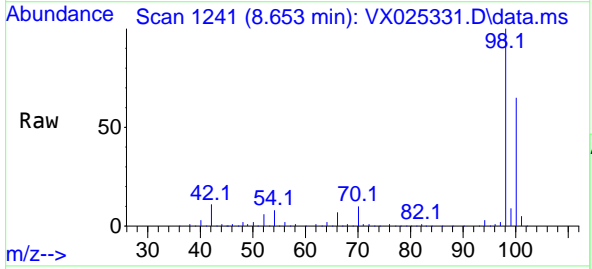


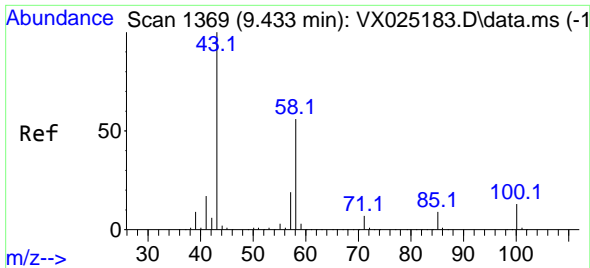
Tgt Ion:117 Resp: 12301
 Ion Ratio Lower Upper
 117 100
 119 5.1 75.6 113.4#
 121 0.0 23.7 35.5#



#50
 Toluene-d8
 Concen: 50.057 ug/l
 RT: 8.653 min Scan# 1241
 Delta R.T. -0.000 min
 Lab File: VX025331.D
 Acq: 24 Nov 2021 16:59

Tgt Ion: 98 Resp: 238223
 Ion Ratio Lower Upper
 98 100
 100 66.2 51.4 77.0

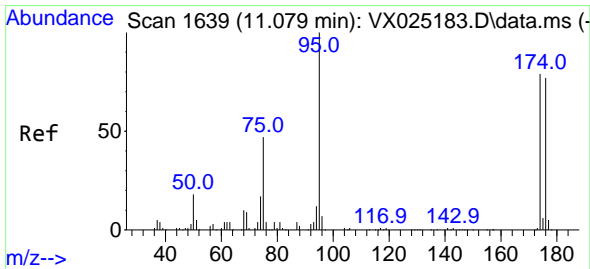
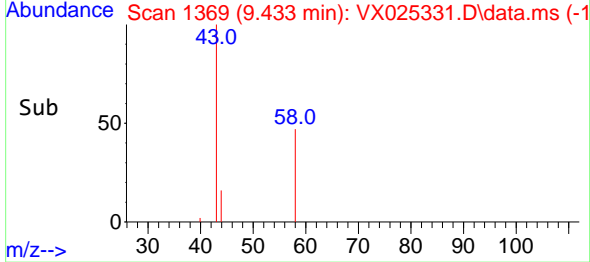
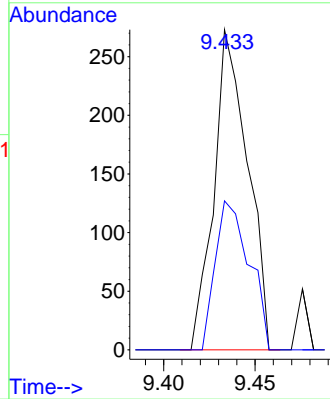
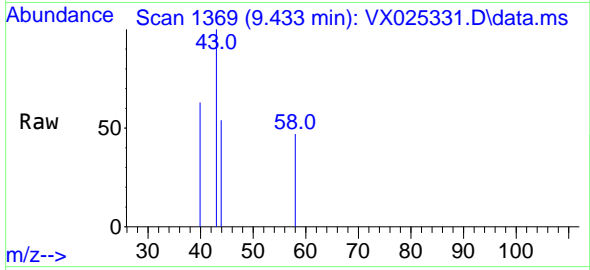




#59
 2-Hexanone
 Concen: 0.208 ug/l
 RT: 9.433 min Scan# 11
 Delta R.T. 0.000 min
 Lab File: VX025331.D
 Acq: 24 Nov 2021 16:59

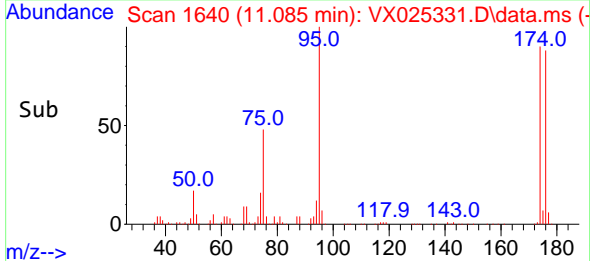
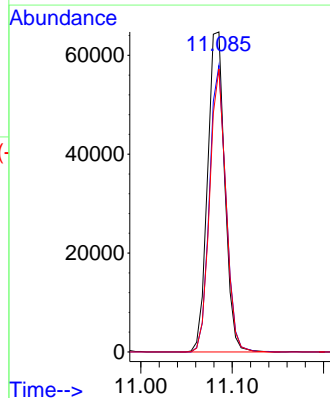
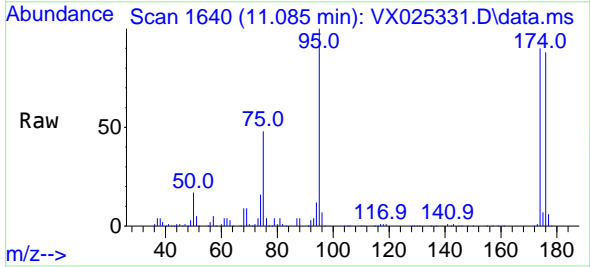
Instrument :
 MSVOA_X
 ClientSampleId :
 261-262

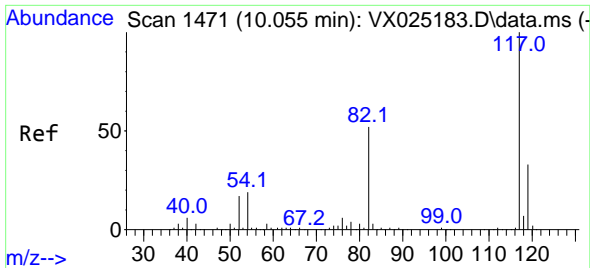
Tgt Ion: 43 Resp: 351
 Ion Ratio Lower Upper
 43 100
 58 46.7 26.6 79.7



#62
 4-Bromofluorobenzene
 Concen: 47.027 ug/l
 RT: 11.085 min Scan# 1640
 Delta R.T. 0.006 min
 Lab File: VX025331.D
 Acq: 24 Nov 2021 16:59

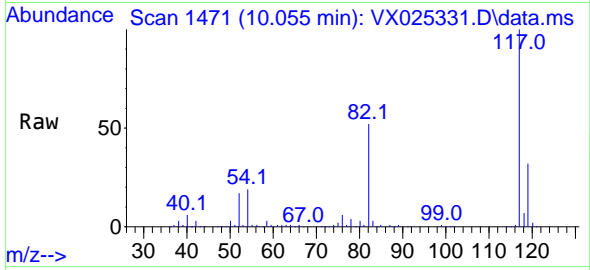
Tgt Ion: 95 Resp: 84667
 Ion Ratio Lower Upper
 95 100
 174 85.4 0.0 158.0
 176 83.5 0.0 153.6



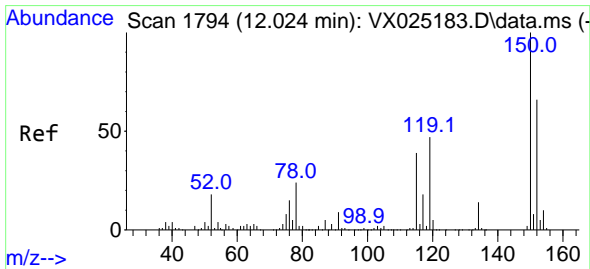
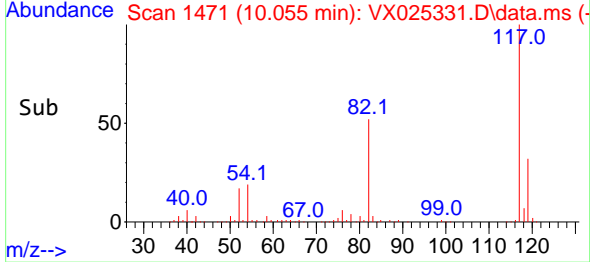
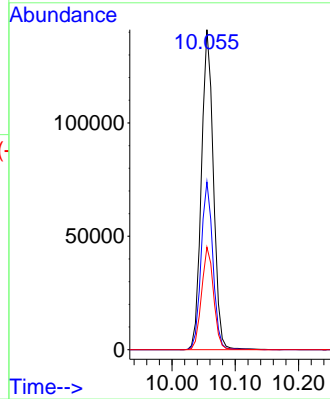


#63
 Chlorobenzene-d5
 Concen: 50.000 ug/l
 RT: 10.055 min Scan# 1471
 Delta R.T. 0.000 min
 Lab File: VX025331.D
 Acq: 24 Nov 2021 16:59

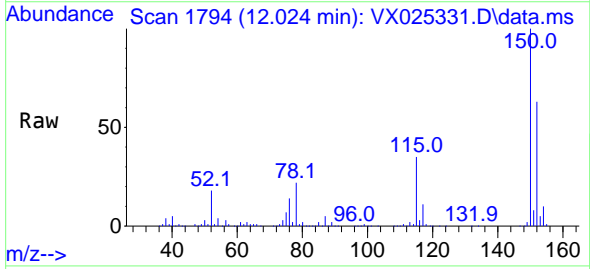
Instrument : MSVOA_X
 ClientSampleId : 261-262



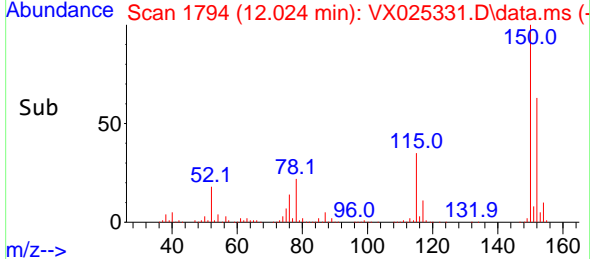
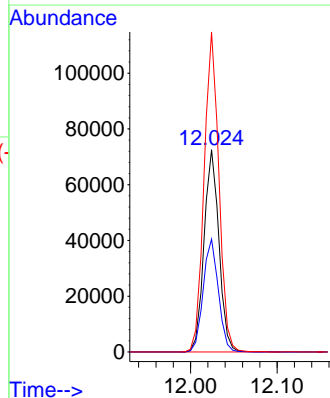
Tgt Ion:117 Resp: 186330
 Ion Ratio Lower Upper
 117 100
 82 52.4 44.6 67.0
 119 32.0 24.8 37.2

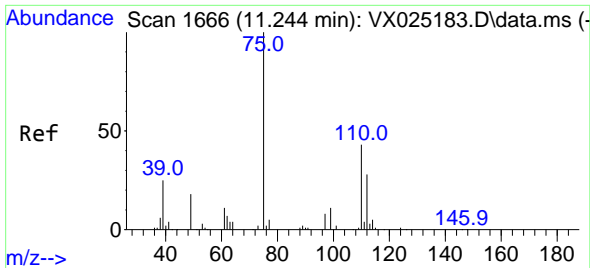


#72
 1,4-Dichlorobenzene-d4
 Concen: 50.000 ug/l
 RT: 12.024 min Scan# 1794
 Delta R.T. 0.000 min
 Lab File: VX025331.D
 Acq: 24 Nov 2021 16:59



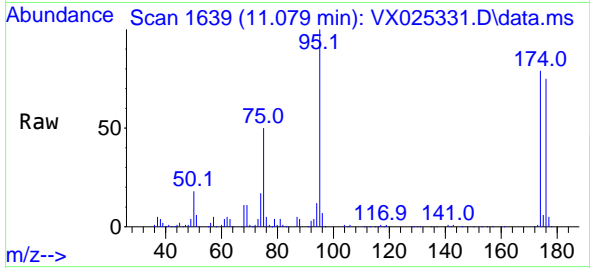
Tgt Ion:152 Resp: 86422
 Ion Ratio Lower Upper
 152 100
 115 56.8 43.3 129.8
 150 157.6 0.0 351.2



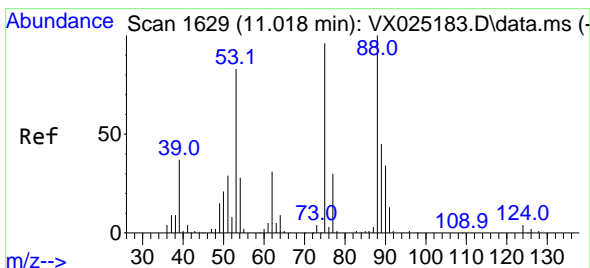
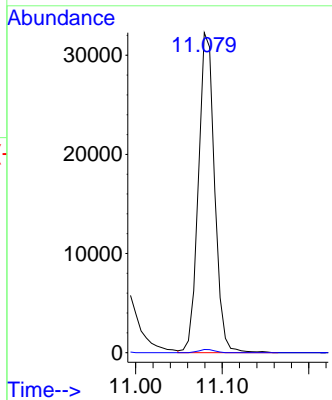
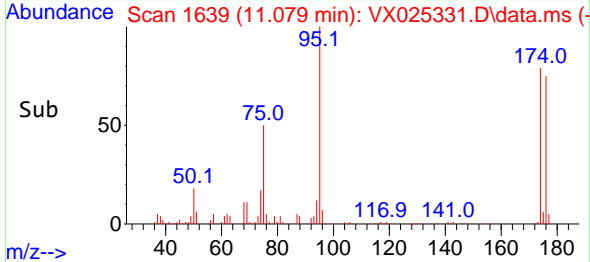


#76
 1,2,3-Trichloropropane
 Concen: 23.667 ug/l
 RT: 11.079 min Scan# 1639
 Delta R.T. -0.165 min
 Lab File: VX025331.D
 Acq: 24 Nov 2021 16:59

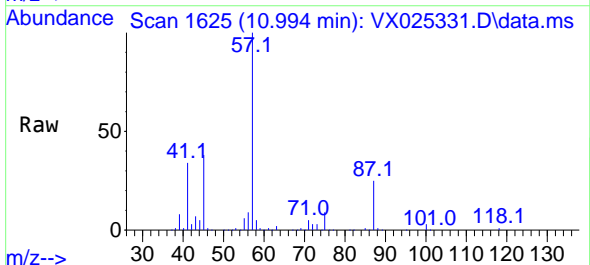
Instrument : MSVOA_X
 ClientSampleId : 261-262



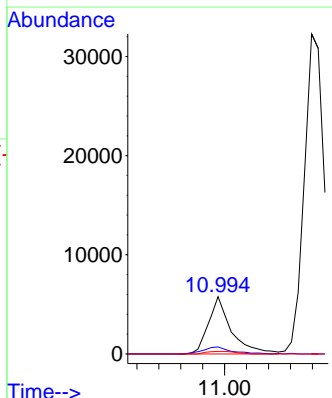
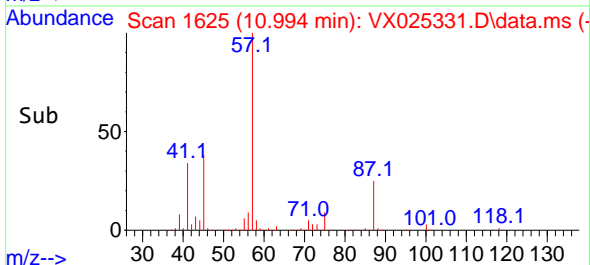
Tgt Ion: 75 Resp: 41884
 Ion Ratio Lower Upper
 75 100
 77 1.0 20.0 59.9#

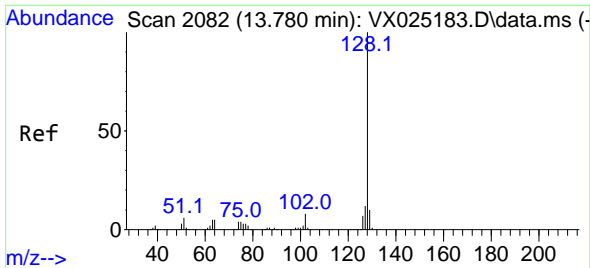


#81
 trans-1,4-Dichloro-2-butene
 Concen: 11.919 ug/l
 RT: 10.994 min Scan# 1625
 Delta R.T. -0.024 min
 Lab File: VX025331.D
 Acq: 24 Nov 2021 16:59



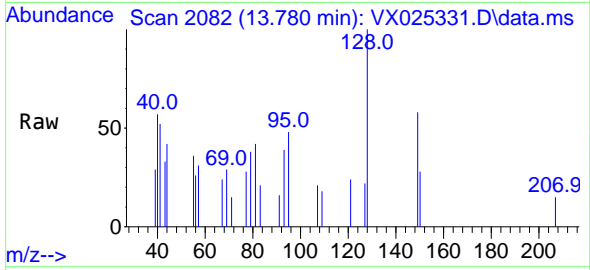
Tgt Ion: 75 Resp: 8373
 Ion Ratio Lower Upper
 75 100
 53 15.1 81.9 122.9#
 89 5.7 38.2 57.2#





#95
 Naphthalene
 Concen: Below Cal
 RT: 13.780 min Scan# 20
 Delta R.T. 0.000 min
 Lab File: VX025331.D
 Acq: 24 Nov 2021 16:59

Instrument :
 MSVOA_X
 ClientSampleId :
 261-262



Tgt Ion:128 Resp: 513

Ion	Ratio	Lower	Upper
128	100		
127	10.5	10.3	15.5
129	0.0	8.8	13.2#

