

Data Path : Z:\voasrv\HPCHEM1\MSVOA_X\Data\VX112524\
 Data File : VX043998.D
 Acq On : 25 Nov 2024 19:40
 Operator : JC/MD
 Sample : PB165160TB
 Misc : 5.0mL/MSVOA_X/WATER
 ALS Vial : 23 Sample Multiplier: 1

Instrument :
 MSVOA_X
ClientSampleId :
 PB165160TB

Quant Time: Nov 27 07:47:24 2024
 Quant Method : Z:\voasrv\HPCHEM1\MSVOA_X\Method\82X112124W.M
 Quant Title : SW846 8260
 QLast Update : Fri Nov 22 03:45:52 2024
 Response via : Initial Calibration

Compound	R.T.	QI on	Response	Conc	Units	Dev(Min)
Internal Standards						
1) Pentafluorobenzene	5.550	168	106822	50.000	ug/l	0.01
34) 1,4-Difluorobenzene	6.757	114	196995	50.000	ug/l	0.00
63) Chlorobenzene-d5	10.055	117	167991	50.000	ug/l	0.00
72) 1,4-Dichlorobenzene-d4	12.018	152	71613	50.000	ug/l	0.00
System Monitoring Compounds						
33) 1,2-Dichloroethane-d4	5.952	65	90676	49.491	ug/l	0.00
Spiked Amount	50.000	Range 74 - 125	Recovery	=	98.980%	
35) Dibromofluoromethane	5.379	113	67121	47.684	ug/l	0.00
Spiked Amount	50.000	Range 75 - 124	Recovery	=	95.360%	
50) Toluene-d8	8.647	98	243374	50.157	ug/l	0.00
Spiked Amount	50.000	Range 86 - 113	Recovery	=	100.320%	
62) 4-Bromofluorobenzene	11.079	95	77726	47.068	ug/l	0.00
Spiked Amount	50.000	Range 77 - 121	Recovery	=	94.140%	
Target Compounds						
						Qvalue
3) Chloromethane	1.288	50	328	0.230	ug/l #	73
5) Bromomethane	1.605	94	752	0.807	ug/l #	61
11) Tert butyl alcohol	2.947	59	2733	9.293	ug/l #	73
12) 1,1-Dichloroethene	2.313	96	297	0.241	ug/l #	55
13) Acrolein	2.240	56	257	0.829	ug/l #	29
14) Allyl chloride	2.642	41	497	0.247	ug/l #	81
15) Acrylonitrile	3.081	53	582	0.812	ug/l #	86
16) Acetone	2.386	43	34034	40.444	ug/l	95
17) Carbon Disulfide	2.502	76	1682	0.662	ug/l	99
18) Methyl Acetate	2.703	43	2396	1.223	ug/l	92
20) Methylene Chloride	2.782	84	2677	1.875	ug/l #	76
21) trans-1,2-Dichloroethene	3.093	96	504	0.397	ug/l #	69
25) 2-Butanone	4.599	43	2867	2.640	ug/l	92
29) Tetrahydrofuran	5.074	42	286	0.430	ug/l	99
31) Cyclohexane	5.544	56	3019	1.478	ug/l #	45
36) 1,1-Dichloropropene	5.690	75	402	0.229	ug/l #	70
37) Ethyl Acetate	4.757	43	2005	0.921	ug/l #	92
38) Carbon Tetrachloride	5.550	117	11677	5.925	ug/l #	17
43) Isopropyl Acetate	6.342	43	114470	33.034	ug/l	99
44) Trichloroethene	7.123	130	1693	1.095	ug/l	81
46) Dibromomethane	7.574	93	242	0.229	ug/l #	81
48) Methyl methacrylate	7.799	41	102889	61.880	ug/l #	45
49) 1,4-Dioxane	7.684	88	98	3.309	ug/l #	1
51) 4-Methyl-2-Pentanone	8.549	43	88593	41.895	ug/l #	51
52) Toluene	8.714	92	710	0.217	ug/l	99
53) t-1,3-Dichloropropene	8.952	75	788	0.407	ug/l #	43
54) cis-1,3-Dichloropropene	8.549	75	36151	17.033	ug/l #	69
59) 2-Hexanone	9.378	43	100697	63.355	ug/l #	26
64) Tetrachloroethene	9.269	164	370	0.334	ug/l #	71
65) Chlorobenzene	10.080	112	1184	0.321	ug/l	95
67) Ethyl Benzene	10.195	91	1461	0.234	ug/l	99
68) m/p-Xylenes	10.305	106	1185	0.508	ug/l	98
69) o-Xylene	10.640	106	474	0.208	ug/l	99
70) Styrene	10.665	104	1098	0.292	ug/l #	44
71) Bromoform	10.805	173	116	1.336	ug/l #	29
74) N-amyl acetate	10.640	43	19080	7.482	ug/l #	54

Data Path : Z:\voasrv\HPCHEM1\MSVOA_X\Data\VX112524\
 Data File : VX043998.D
 Acq On : 25 Nov 2024 19:40
 Operator : JC/MD
 Sample : PB165160TB
 Misc : 5.0mL/MSVOA_X/WATER
 ALS Vial : 23 Sample Multiplier: 1

Instrument :
 MSVOA_X
ClientSampleId :
 PB165160TB

Quant Time: Nov 27 07:47:24 2024
 Quant Method : Z:\voasrv\HPCHEM1\MSVOA_X\Method\82X112124W.M
 Quant Title : SW846 8260
 QLast Update : Fri Nov 22 03:45:52 2024
 Response via : Initial Calibration

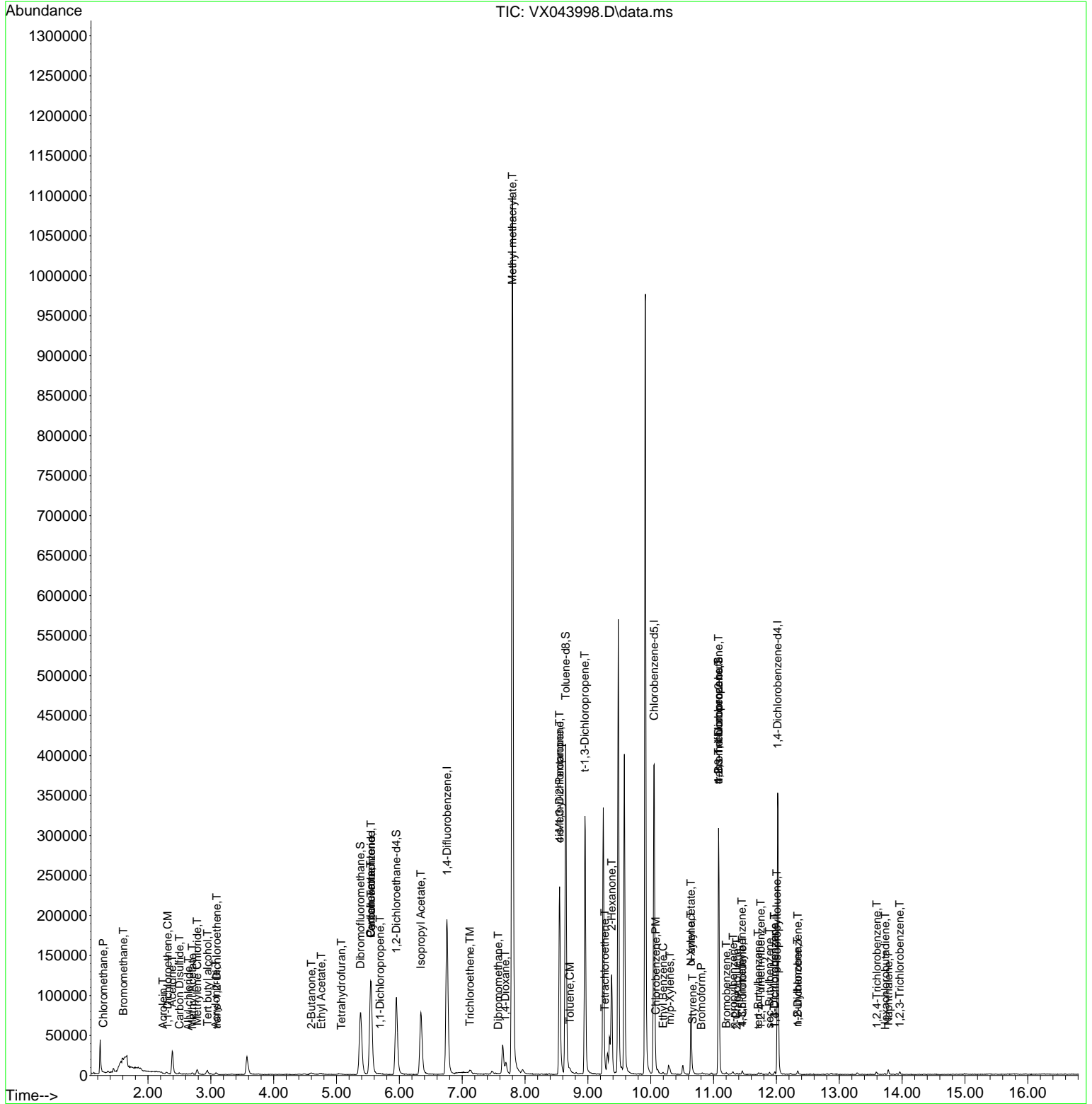
Compound	R. T.	QI on	Response	Conc	Units	Dev(Min)
76) 1, 2, 3-Tri chloropropane	11.079	75	44679	28.450	ug/l #	35
77) Bromobenzene	11.201	156	415	0.316	ug/l	80
78) n-propyl benzene	11.311	91	1772	0.288	ug/l	87
79) 2-Chlorotoluene	11.366	91	1265	0.325	ug/l	95
80) 1, 3, 5-Tri methyl benzene	11.451	105	1054	0.233	ug/l	96
81) trans-1, 4-Di chloro-2-b...	11.079	75	44679	77.632	ug/l #	7
82) 4-Chlorotoluene	11.457	91	1472	0.335	ug/l	98
83) tert-Butyl benzene	11.707	119	921	0.205	ug/l	75
84) 1, 2, 4-Tri methyl benzene	11.750	105	1254	0.278	ug/l	88
85) sec-Butyl benzene	11.890	105	1332	0.242	ug/l	95
86) p-Isopropyl toluene	12.006	119	1150	0.257	ug/l #	69
87) 1, 3-Di chlorobenzene	11.969	146	1014	0.424	ug/l	93
88) 1, 4-Di chlorobenzene	11.969	146	1014	0.416	ug/l	90
89) n-Butyl benzene	12.335	91	1540	0.391	ug/l	92
91) 1, 2-Di chlorobenzene	12.341	146	742	0.307	ug/l	89
93) 1, 2, 4-Tri chlorobenzene	13.597	180	977	0.687	ug/l	90
94) Hexachlorobutadiene	13.731	225	238	0.423	ug/l #	65
95) Naphthalene	13.780	128	4674	0.912	ug/l	96
96) 1, 2, 3-Tri chlorobenzene	13.963	180	936	0.650	ug/l	94

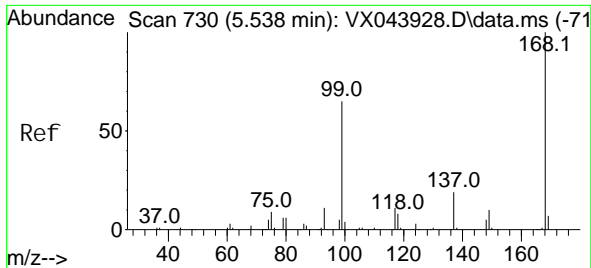
(#) = qualifier out of range (m) = manual integration (+) = signals summed

Data Path : Z:\voasrv\HPCHEM1\MSVOA_X\Data\VX112524\
 Data File : VX043998.D
 Acq On : 25 Nov 2024 19: 40
 Operator : JC/MD
 Sample : PB165160TB
 Misc : 5.0mL/MSVOA_X/WATER
 ALS Vial : 23 Sample Multi plier: 1

Instrument :
 MSVOA_X
ClientSampleId :
 PB165160TB

Quant Time: Nov 27 07: 47: 24 2024
 Quant Method : Z:\voasrv\HPCHEM1\MSVOA_X\Method\82X112124W. M
 Quant Title : SW846 8260
 QLast Update : Fri Nov 22 03: 45: 52 2024
 Response via : Initial Calibration

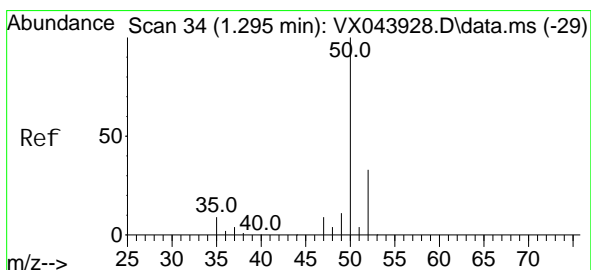
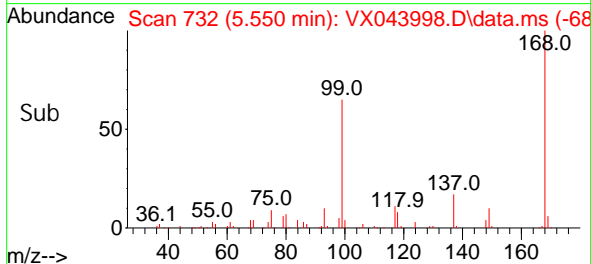
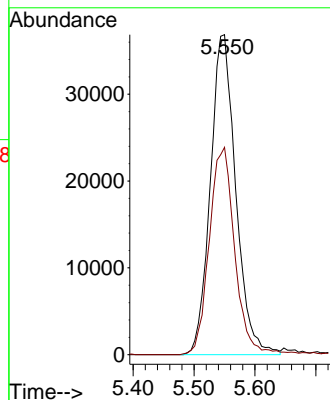
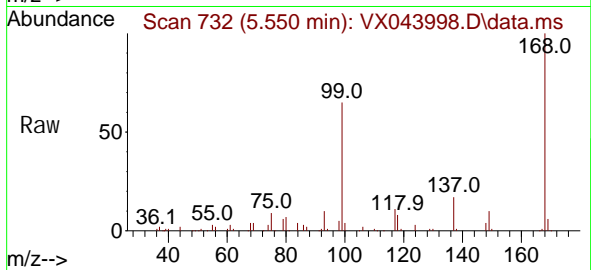




#1
 Pentafluorobenzene
 Concen: 50.000 ug/l
 RT: 5.550 min Scan# 71
 Delta R.T. 0.012 min
 Lab File: VX043998.D
 Acq: 25 Nov 2024 19:40

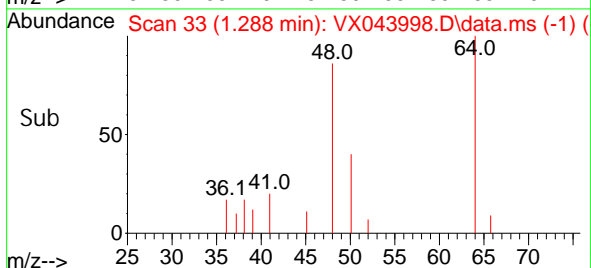
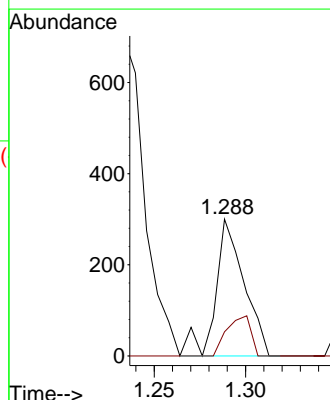
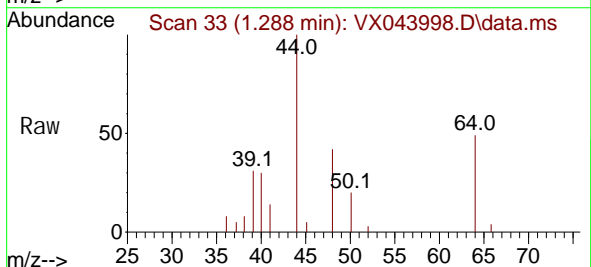
Instrument : MSVOA_X
 ClientSampleId : PB165160TB

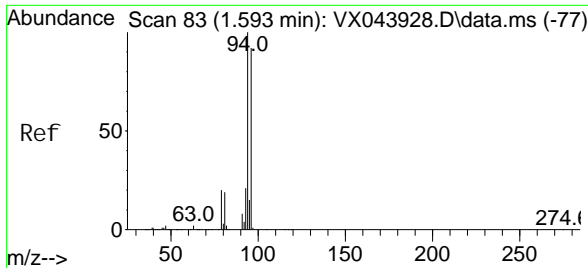
Tgt Ion: 168 Resp: 106822
 Ion Ratio Lower Upper
 168 100
 99 64.8 51.8 77.8



#3
 Chloromethane
 Concen: 0.230 ug/l
 RT: 1.288 min Scan# 33
 Delta R.T. -0.006 min
 Lab File: VX043998.D
 Acq: 25 Nov 2024 19:40

Tgt Ion: 50 Resp: 328
 Ion Ratio Lower Upper
 50 100
 52 17.7 26.1 39.1#

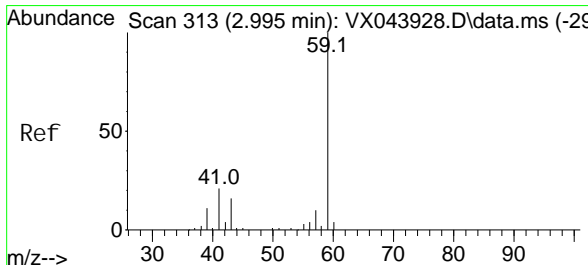
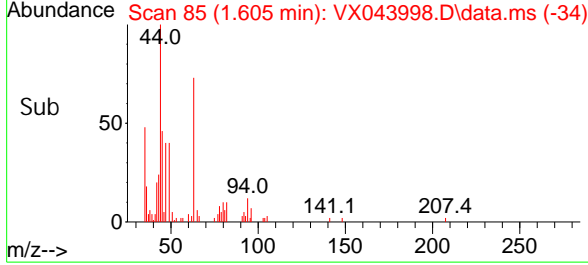
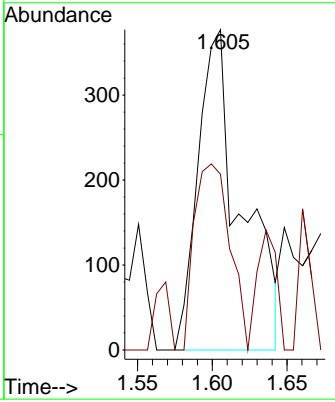
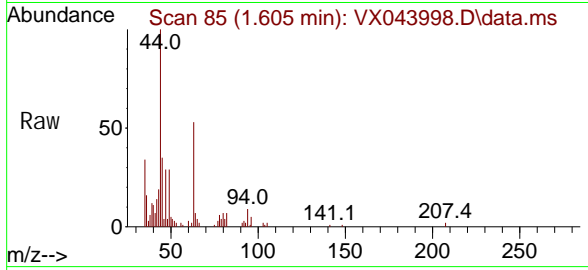




#5
 Bromomethane
 Concen: 0.807 ug/l
 RT: 1.605 min Scan# 80
 Delta R.T. 0.012 min
 Lab File: VX043998.D
 Acq: 25 Nov 2024 19:40

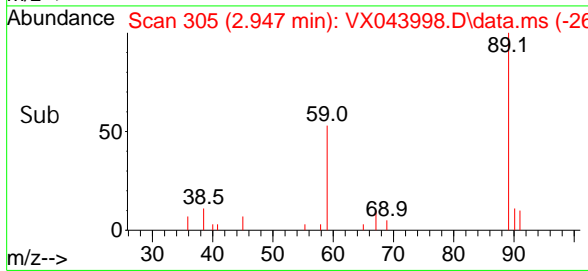
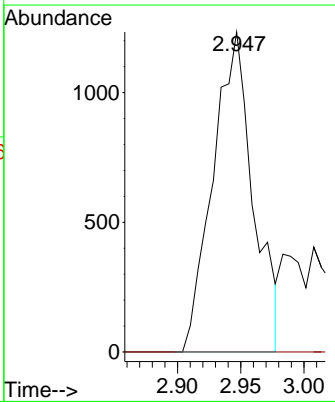
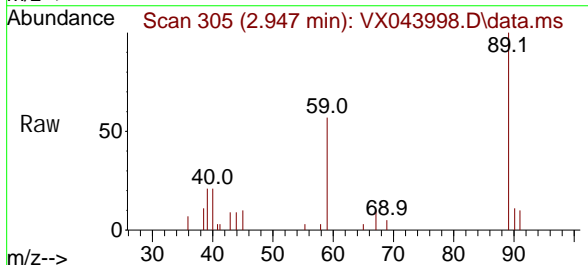
Instrument : MSVOA_X
 ClientSampleId : PB165160TB

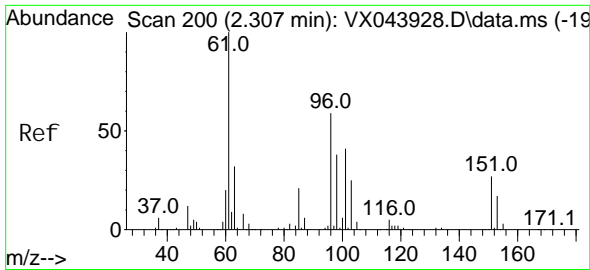
Tgt Ion: 94 Resp: 752
 Ion Ratio Lower Upper
 94 100
 96 54.9 73.9 110.9#



#11
 Tert butyl alcohol
 Concen: 9.293 ug/l
 RT: 2.947 min Scan# 305
 Delta R.T. -0.049 min
 Lab File: VX043998.D
 Acq: 25 Nov 2024 19:40

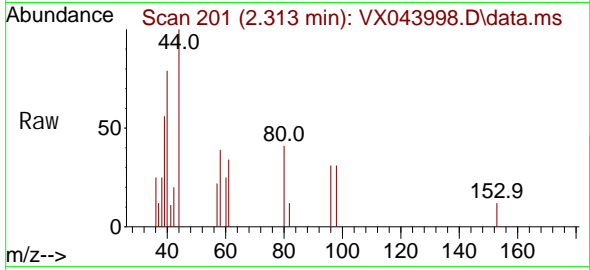
Tgt Ion: 59 Resp: 2733
 Ion Ratio Lower Upper
 59 100
 57 0.0 7.9 11.9#



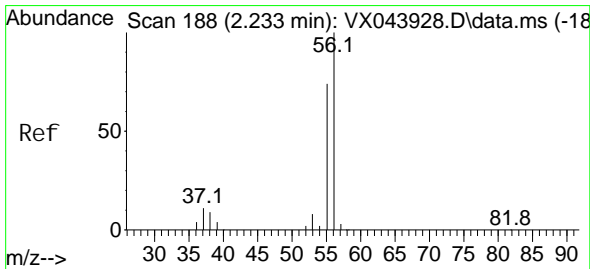
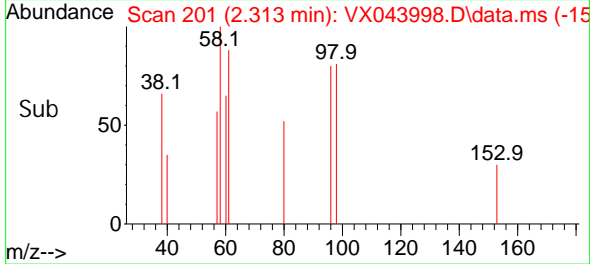
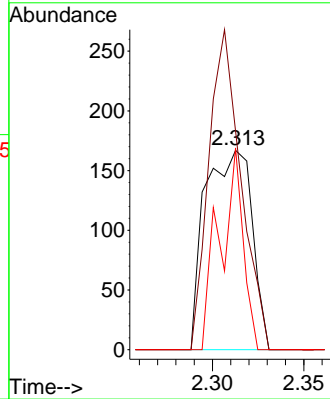


#12
 1,1-Dichloroethene
 Concen: 0.241 ug/l
 RT: 2.313 min Scan# 200
 Delta R.T. 0.006 min
 Lab File: VX043998.D
 Acq: 25 Nov 2024 19:40

Instrument : MSVOA_X
 Client Sample Id : PB165160TB

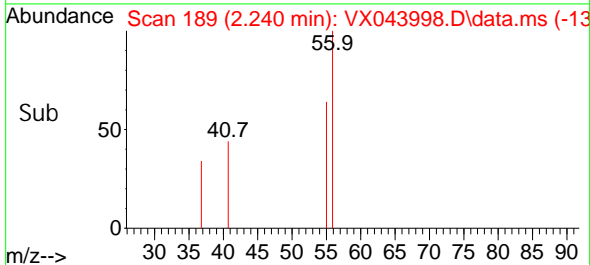
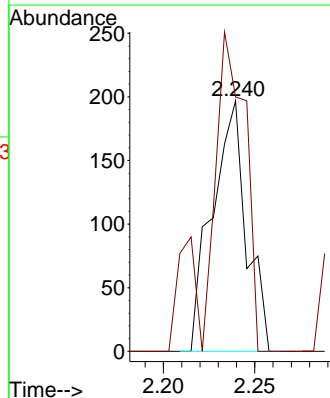
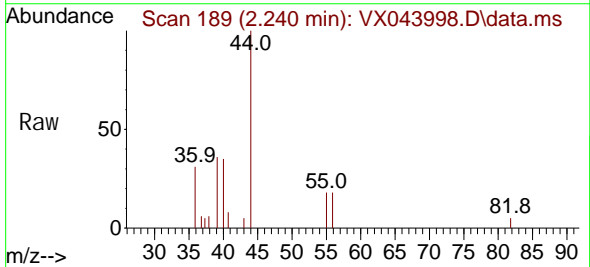


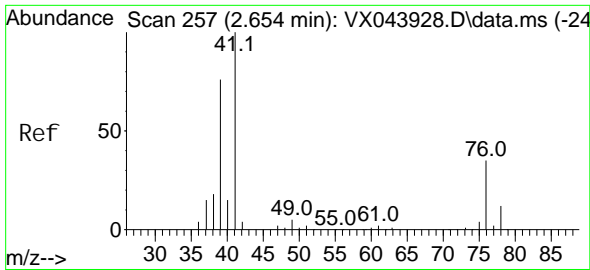
Tgt Ion: 96 Resp: 297
 Ion Ratio Lower Upper
 96 100
 61 109.6 135.5 203.3#
 98 101.2 50.8 76.2#



#13
 Acrolein
 Concen: 0.829 ug/l
 RT: 2.240 min Scan# 189
 Delta R.T. 0.006 min
 Lab File: VX043998.D
 Acq: 25 Nov 2024 19:40

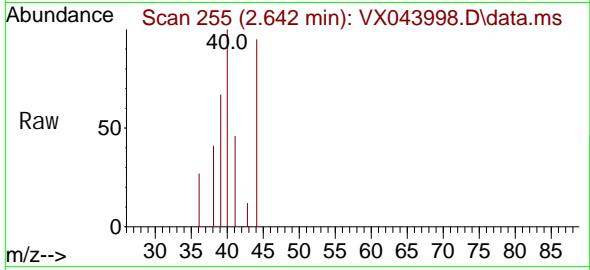
Tgt Ion: 56 Resp: 257
 Ion Ratio Lower Upper
 56 100
 55 131.9 58.2 87.2#





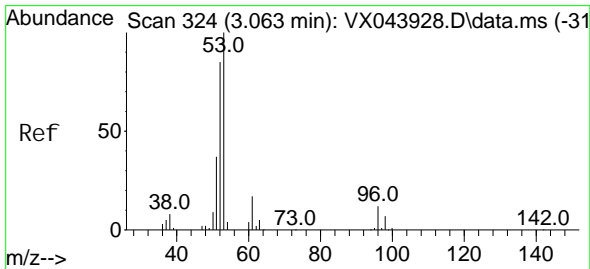
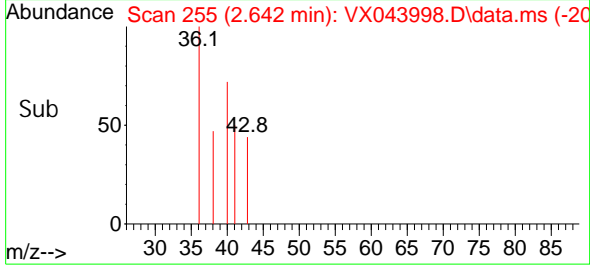
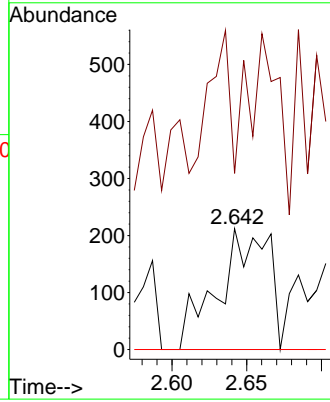
#14
 Allyl chloride
 Concen: 0.247 ug/l
 RT: 2.642 min Scan# 21
 Delta R.T. -0.012 min
 Lab File: VX043998.D
 Acq: 25 Nov 2024 19:40

Instrument : MSVOA_X
 Client Sample Id : PB165160TB



Tgt Ion: 41 Resp: 497

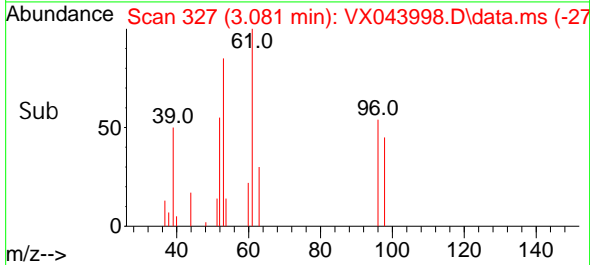
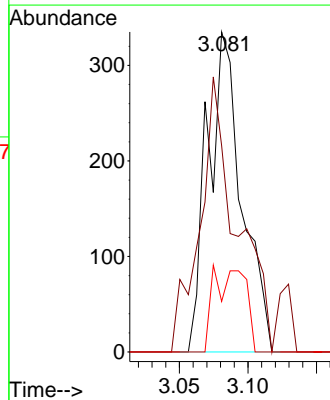
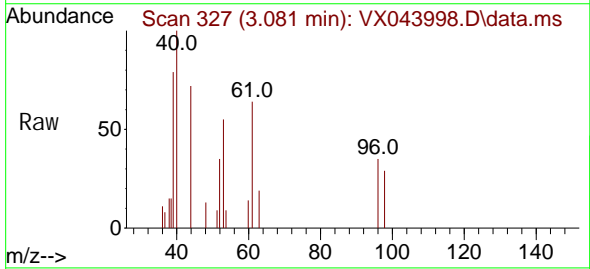
Ion	Ratio	Lower	Upper
41	100		
39	74.6	59.5	89.3
76	0.0	27.4	41.2#

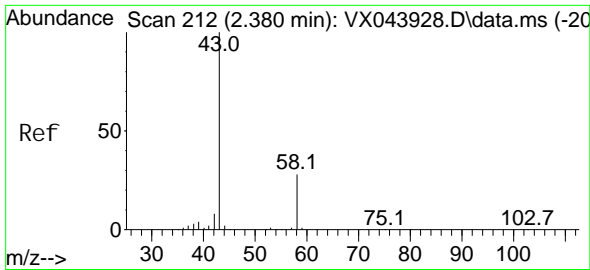


#15
 Acrylonitrile
 Concen: 0.812 ug/l
 RT: 3.081 min Scan# 327
 Delta R.T. 0.018 min
 Lab File: VX043998.D
 Acq: 25 Nov 2024 19:40

Tgt Ion: 53 Resp: 582

Ion	Ratio	Lower	Upper
53	100		
52	92.4	66.5	99.7
51	24.6	30.2	45.4#

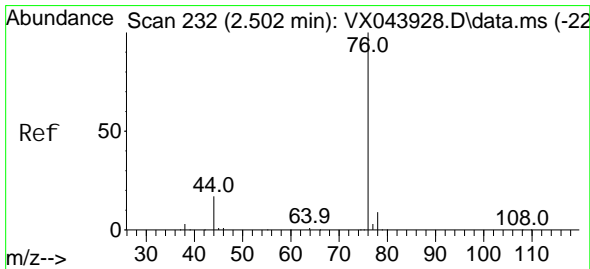
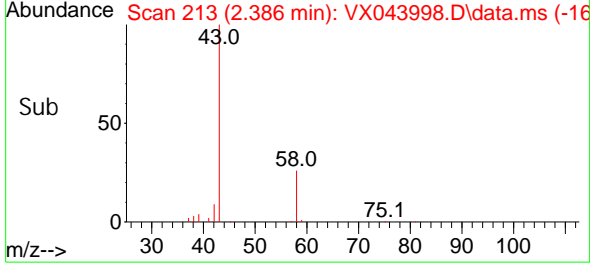
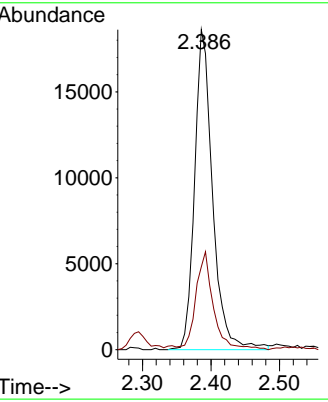
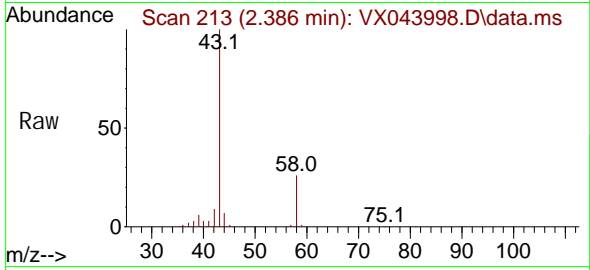




#16
 Acetone
 Concen: 40.444 ug/l
 RT: 2.386 min Scan# 212
 Delta R.T. 0.006 min
 Lab File: VX043998.D
 Acq: 25 Nov 2024 19:40

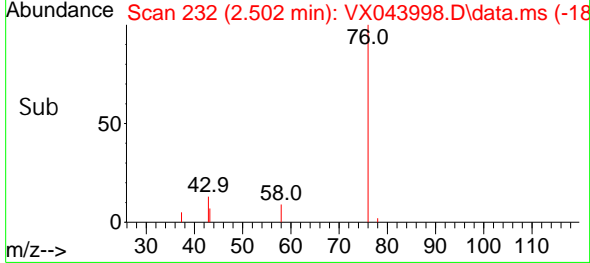
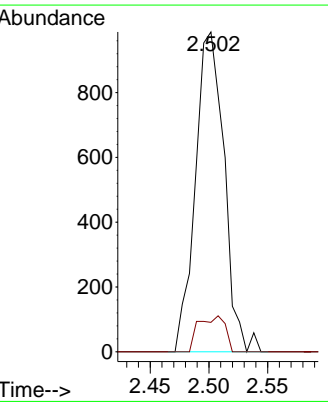
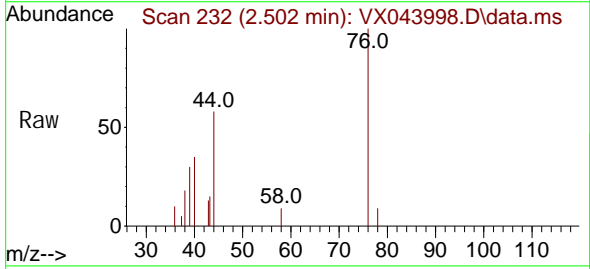
Instrument : MSVOA_X
 ClientSampleId : PB165160TB

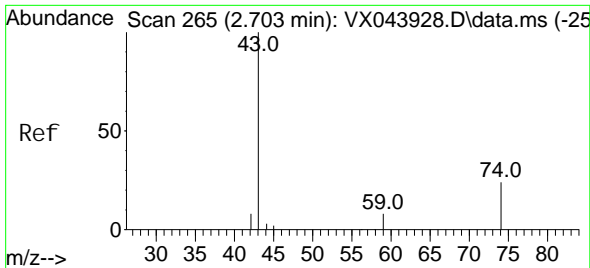
Tgt Ion: 43 Resp: 34034
 Ion Ratio Lower Upper
 43 100
 58 25.9 22.7 34.1



#17
 Carbon Di sul fi de
 Concen: 0.662 ug/l
 RT: 2.502 min Scan# 232
 Delta R.T. -0.000 min
 Lab File: VX043998.D
 Acq: 25 Nov 2024 19:40

Tgt Ion: 76 Resp: 1682
 Ion Ratio Lower Upper
 76 100
 78 9.2 7.0 10.6

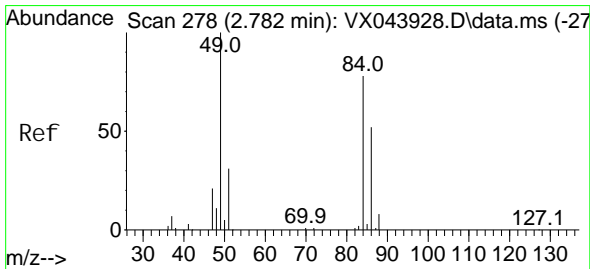
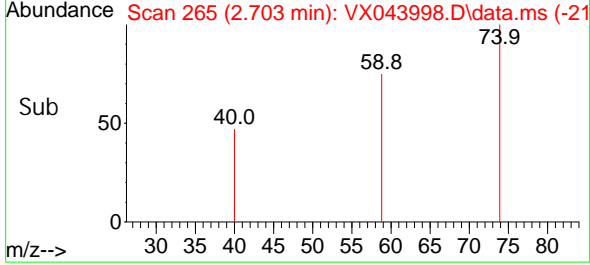
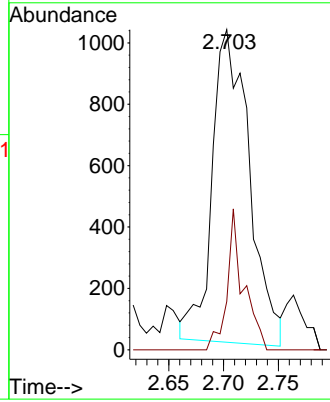
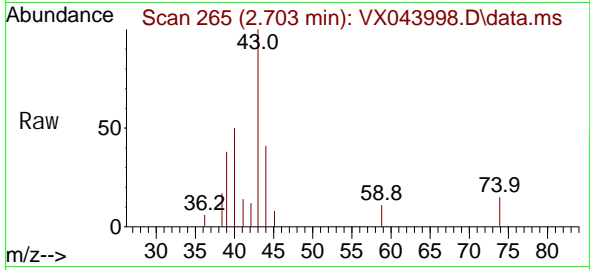




#18
 Methyl Acetate
 Concen: 1.223 ug/l
 RT: 2.703 min Scan# 20
 Delta R.T. -0.000 min
 Lab File: VX043998.D
 Acq: 25 Nov 2024 19:40

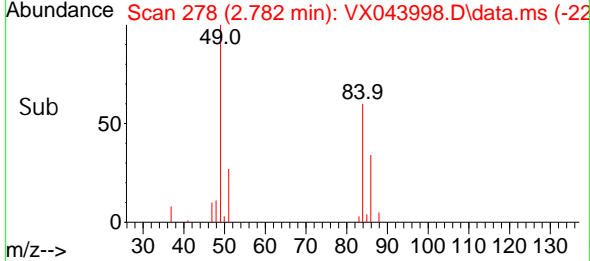
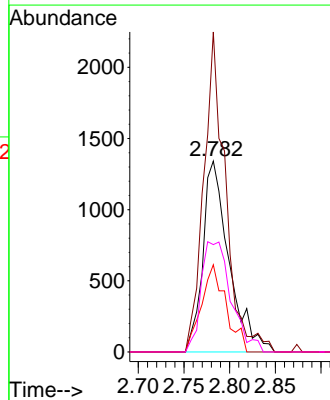
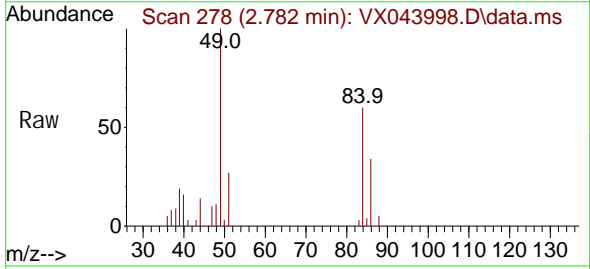
Instrument : MSVOA_X
 ClientSampleId : PB165160TB

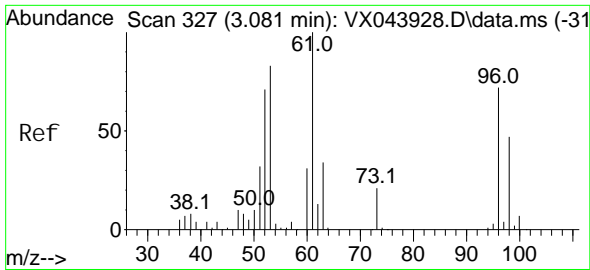
Tgt Ion: 43 Resp: 2396
 Ion Ratio Lower Upper
 43 100
 74 19.9 18.9 28.3



#20
 Methylene Chloride
 Concen: 1.875 ug/l
 RT: 2.782 min Scan# 278
 Delta R.T. -0.000 min
 Lab File: VX043998.D
 Acq: 25 Nov 2024 19:40

Tgt Ion: 84 Resp: 2677
 Ion Ratio Lower Upper
 84 100
 49 167.6 102.7 154.1#
 51 45.7 31.7 47.5
 86 56.2 53.9 80.9

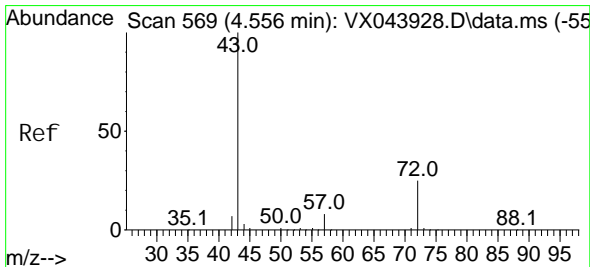
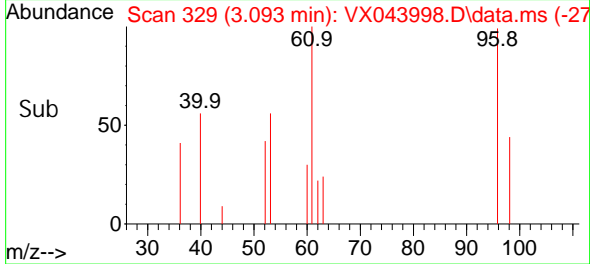
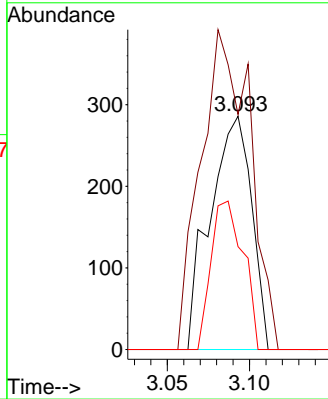
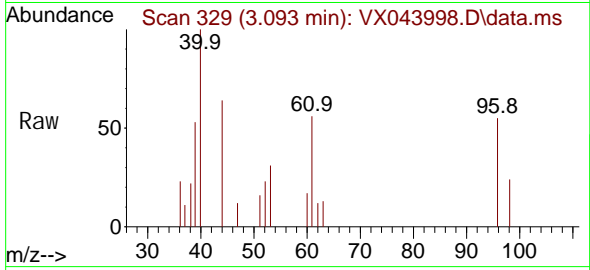




#21
 trans-1, 2-Dichloroethene
 Concen: 0.397 ug/l
 RT: 3.093 min Scan# 31
 Delta R.T. 0.012 min
 Lab File: VX043998.D
 Acq: 25 Nov 2024 19:40

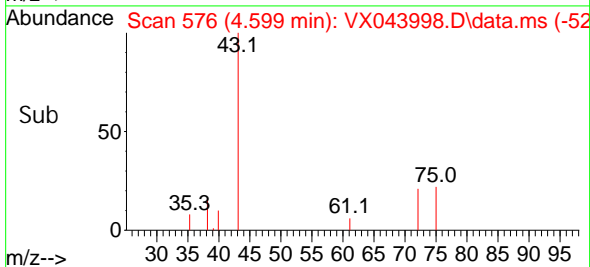
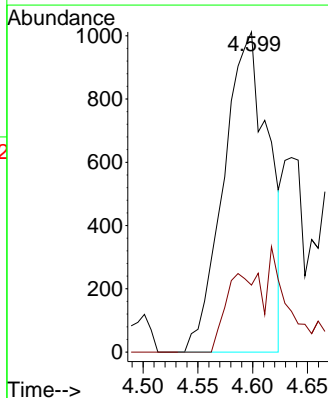
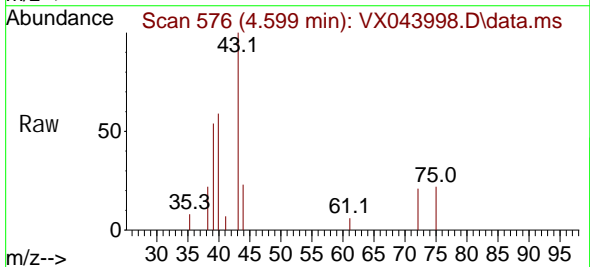
Instrument : MSVOA_X
 ClientSampleId : PB165160TB

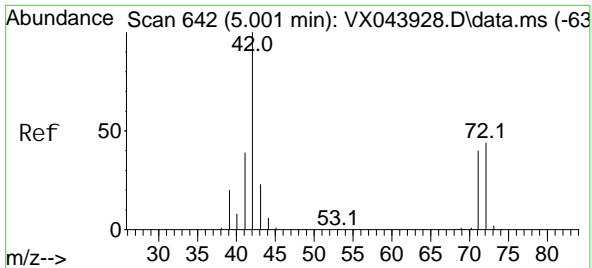
Tgt Ion	Resp	Lower	Upper
96	100		
61	100.7	111.8	167.6#
98	44.1	52.7	79.1#



#25
 2-Butanone
 Concen: 2.640 ug/l
 RT: 4.599 min Scan# 576
 Delta R.T. 0.043 min
 Lab File: VX043998.D
 Acq: 25 Nov 2024 19:40

Tgt Ion	Resp	Lower	Upper
43	100		
72	20.9	20.2	30.2

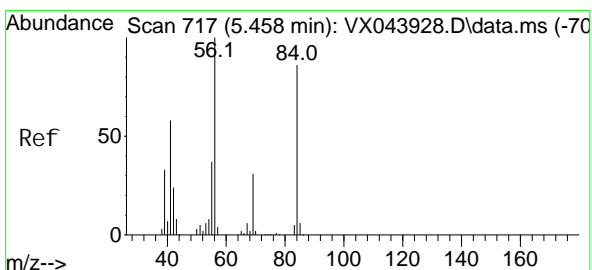
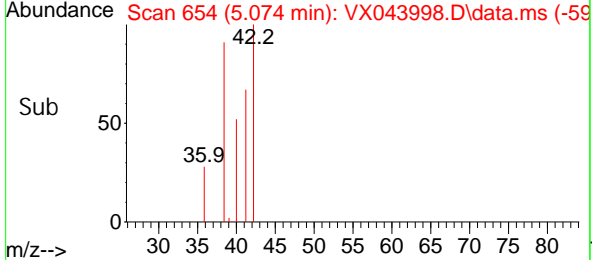
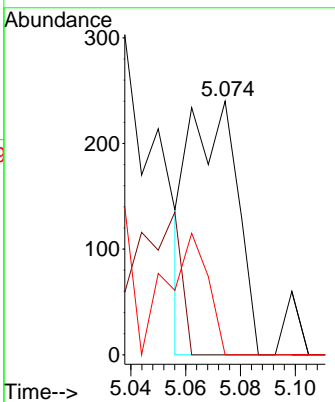
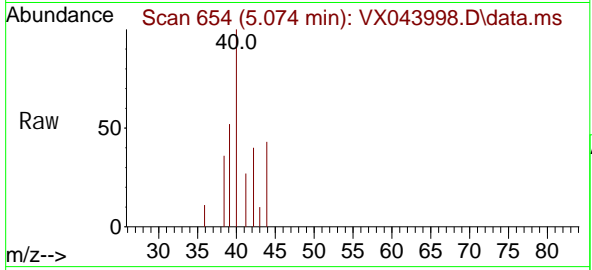




#29
 Tetrahydrofuran
 Concen: 0.430 ug/l
 RT: 5.074 min Scan# 60
 Delta R.T. 0.073 min
 Lab File: VX043998.D
 Acq: 25 Nov 2024 19:40

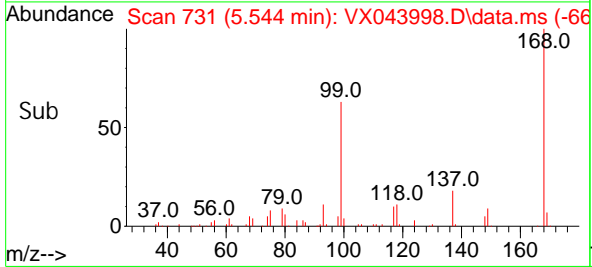
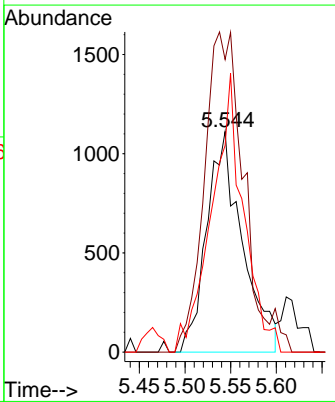
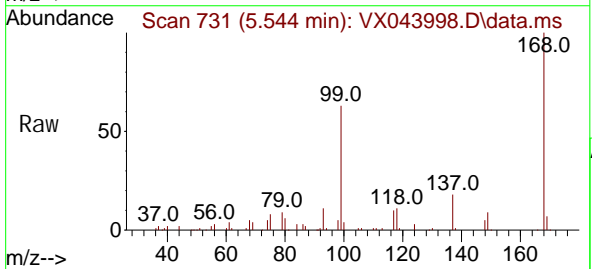
Instrument : MSVOA_X
 ClientSampleId : PB165160TB

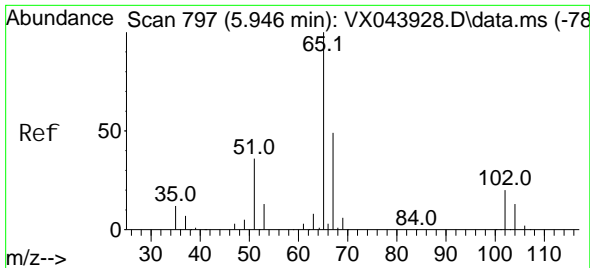
Tgt Ion	Resp	Lower	Upper
42	100		
72	44.8	36.4	54.6
71	42.0	33.4	50.0



#31
 Cyclohexane
 Concen: 1.478 ug/l
 RT: 5.544 min Scan# 731
 Delta R.T. 0.085 min
 Lab File: VX043998.D
 Acq: 25 Nov 2024 19:40

Tgt Ion	Resp	Lower	Upper
56	100		
69	132.6	24.7	37.1#
84	93.7	68.7	103.1





#33
 1, 2-Di chloroethane-d4
 Concen: 49.491 ug/l
 RT: 5.952 min Scan# 798
 Delta R.T. 0.006 min
 Lab File: VX043998.D
 Acq: 25 Nov 2024 19: 40

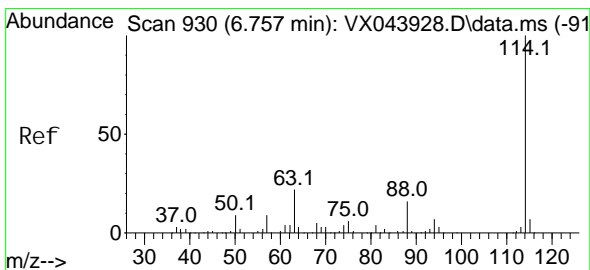
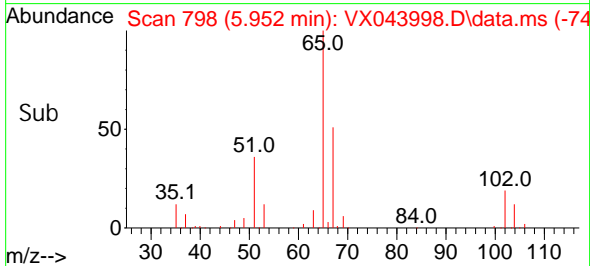
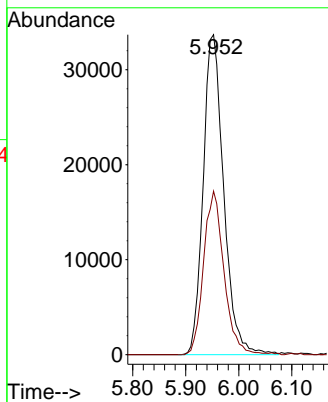
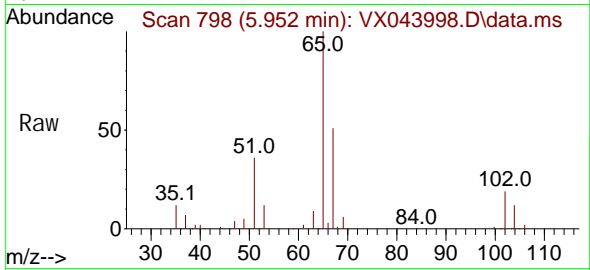
Instrument :

MSVOA_X

ClientSampleId :

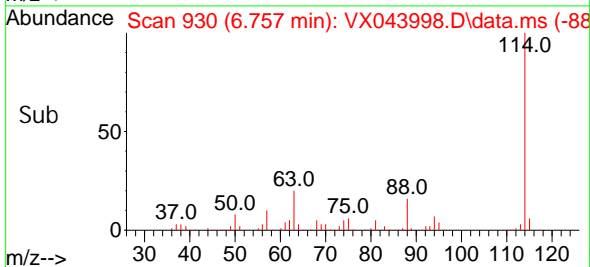
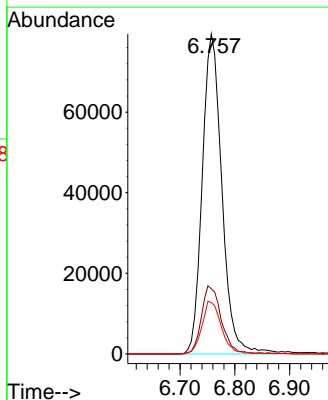
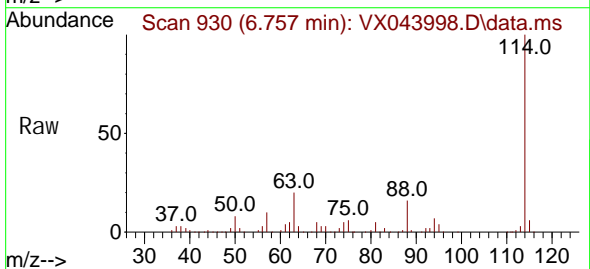
PB165160TB

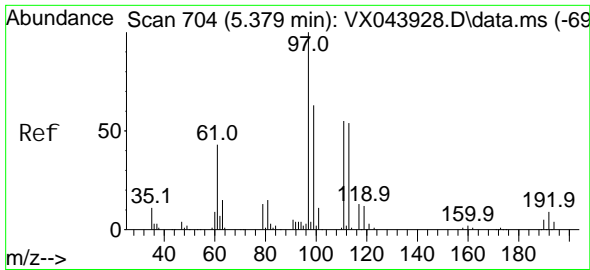
Tgt Ion: 65 Resp: 90676
 Ion Ratio Lower Upper
 65 100
 67 50.7 0.0 100.8



#34
 1, 4-Di fluorobenzene
 Concen: 50.000 ug/l
 RT: 6.757 min Scan# 930
 Delta R.T. -0.000 min
 Lab File: VX043998.D
 Acq: 25 Nov 2024 19: 40

Tgt Ion: 114 Resp: 196995
 Ion Ratio Lower Upper
 114 100
 63 20.4 0.0 44.0
 88 16.1 0.0 32.4





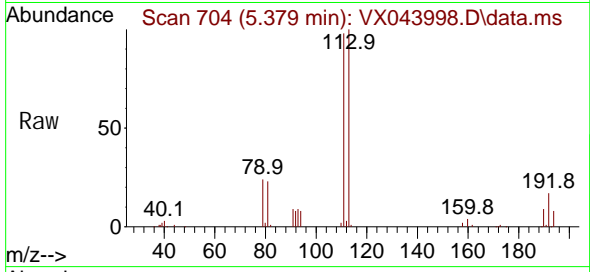
#35
 Di bromofluoromethane
 Concen: 47.684 ug/l
 RT: 5.379 min Scan# 704
 Delta R.T. -0.000 min
 Lab File: VX043998.D
 Acq: 25 Nov 2024 19:40

Instrument :

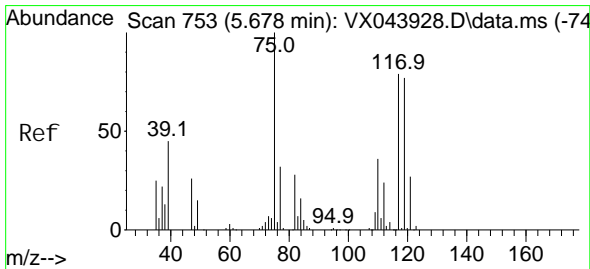
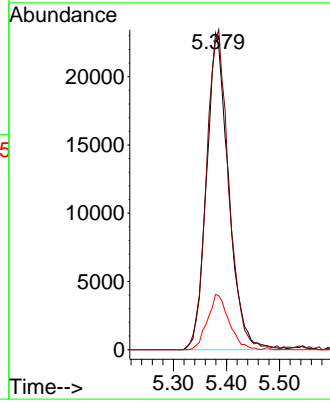
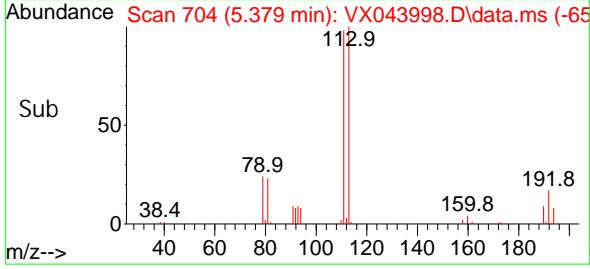
MSVOA_X

Client Sample Id :

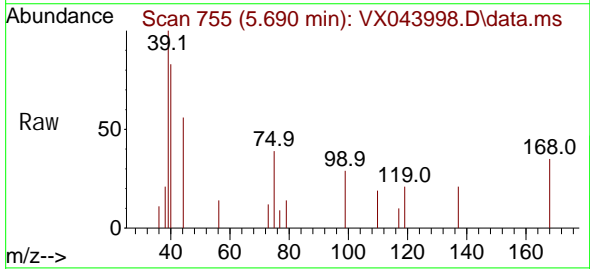
PB165160TB



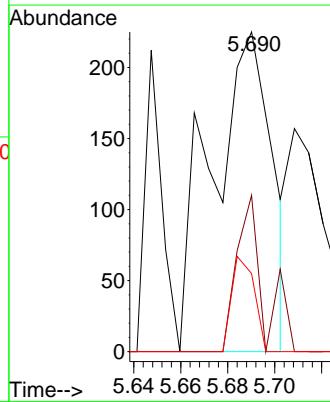
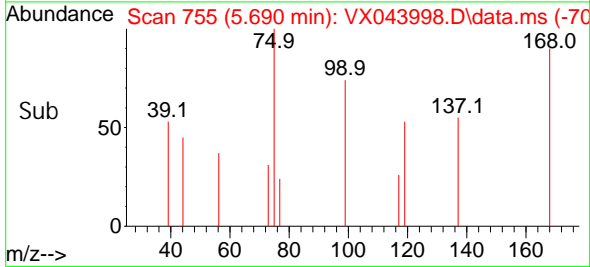
Tgt Ion: 113 Resp: 67121
 Ion Ratio Lower Upper
 113 100
 111 102.1 81.0 121.4
 192 17.0 13.0 19.6

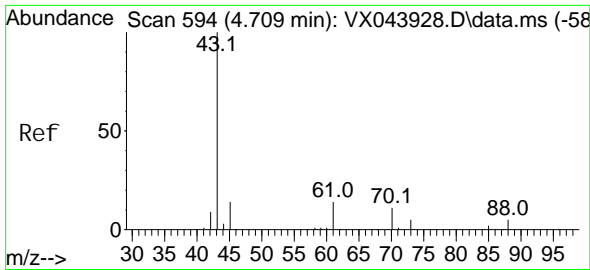


#36
 1,1-Dichloropropene
 Concen: 0.229 ug/l
 RT: 5.690 min Scan# 755
 Delta R.T. 0.012 min
 Lab File: VX043998.D
 Acq: 25 Nov 2024 19:40



Tgt Ion: 75 Resp: 402
 Ion Ratio Lower Upper
 75 100
 110 21.6 17.4 52.2
 77 11.2 25.8 38.8#

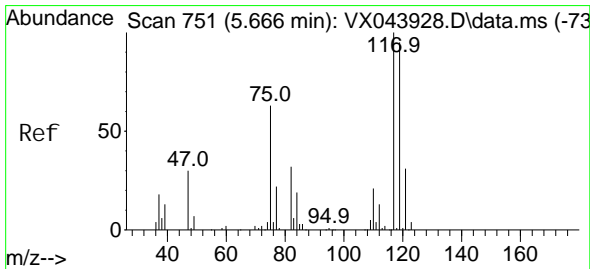
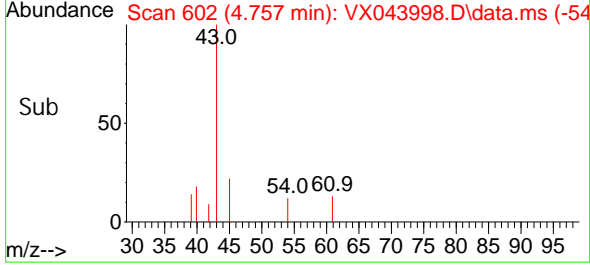
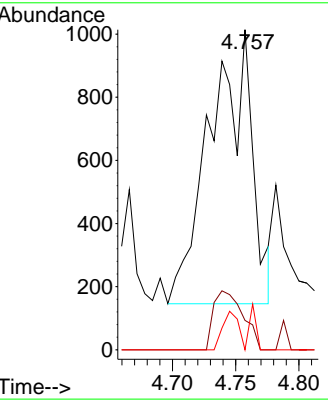
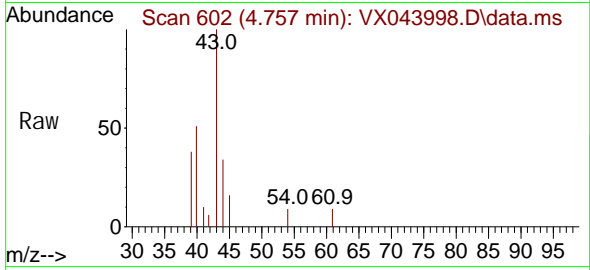




#37
 Ethyl Acetate
 Concen: 0.921 ug/l
 RT: 4.757 min Scan# 60
 Delta R.T. 0.049 min
 Lab File: VX043998.D
 Acq: 25 Nov 2024 19:40

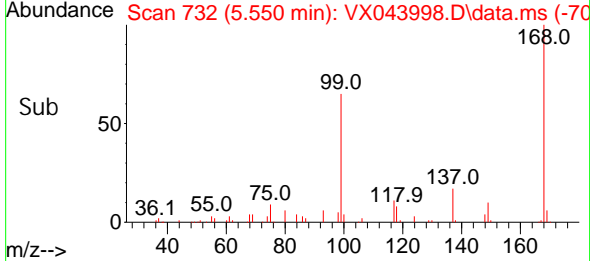
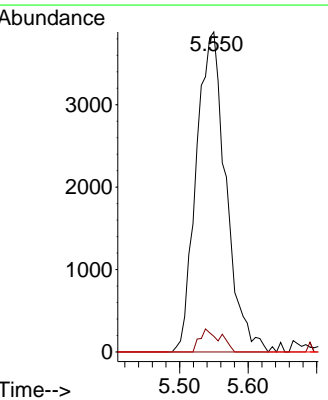
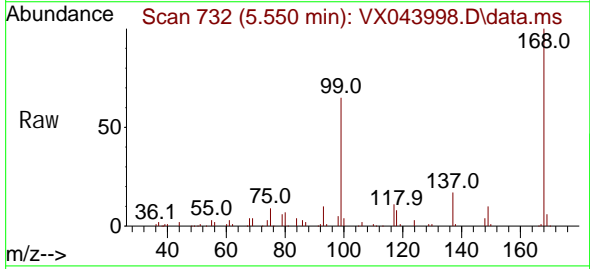
Instrument : MSVOA_X
 ClientSampleId : PB165160TB

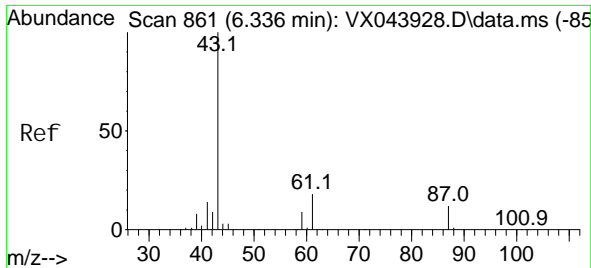
Tgt Ion	Resp	Lower	Upper
43	100		
61	15.1	10.7	16.1
70	5.2	8.0	12.0



#38
 Carbon Tetrachloride
 Concen: 5.925 ug/l
 RT: 5.550 min Scan# 732
 Delta R.T. -0.116 min
 Lab File: VX043998.D
 Acq: 25 Nov 2024 19:40

Tgt Ion	Resp	Lower	Upper
117	100		
119	4.9	75.2	112.8
121	0.0	24.5	36.7



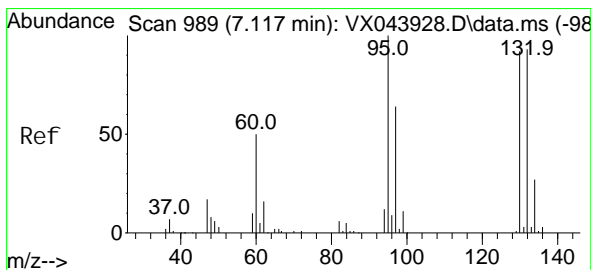
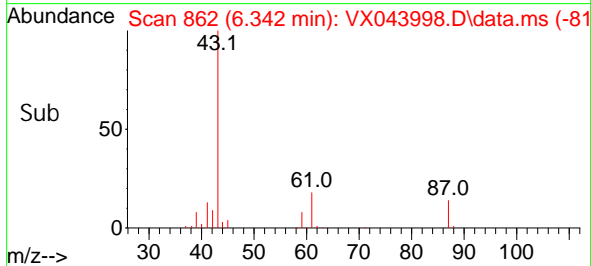
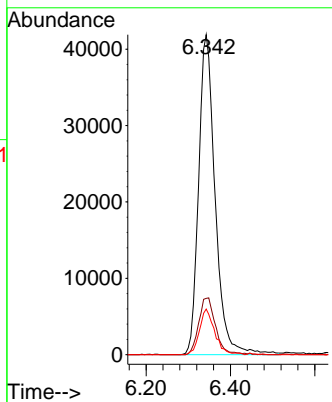
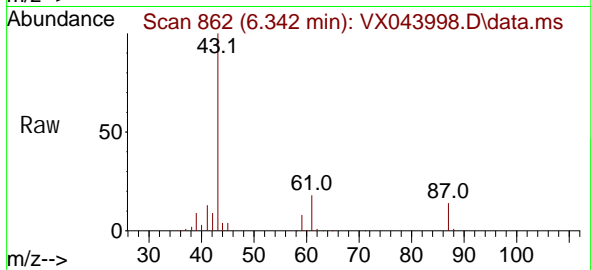


#43
 Isopropyl Acetate
 Concen: 33.034 ug/l
 RT: 6.342 min Scan# 80
 Delta R.T. 0.006 min
 Lab File: VX043998.D
 Acq: 25 Nov 2024 19:40

Instrument : MSVOA_X
 ClientSampleId : PB165160TB

Tgt Ion: 43 Resp: 114470

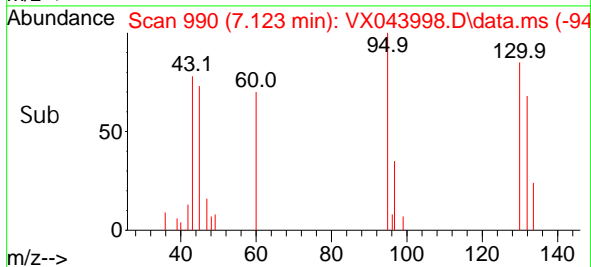
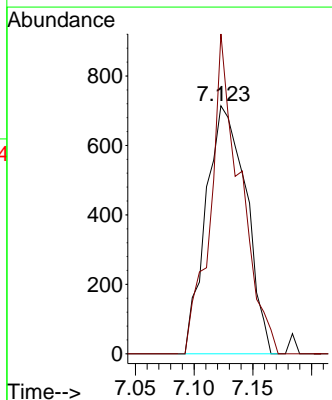
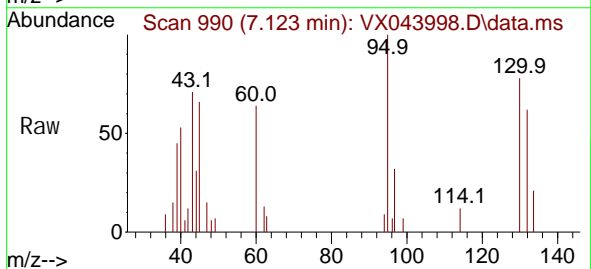
Ion	Ratio	Lower	Upper
43	100		
61	18.2	14.5	21.7
87	13.1	10.2	15.2

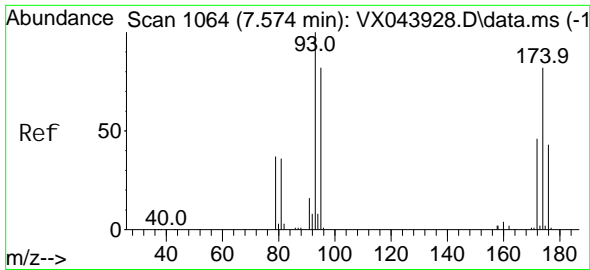


#44
 Trichloroethene
 Concen: 1.095 ug/l
 RT: 7.123 min Scan# 990
 Delta R.T. 0.006 min
 Lab File: VX043998.D
 Acq: 25 Nov 2024 19:40

Tgt Ion: 130 Resp: 1693

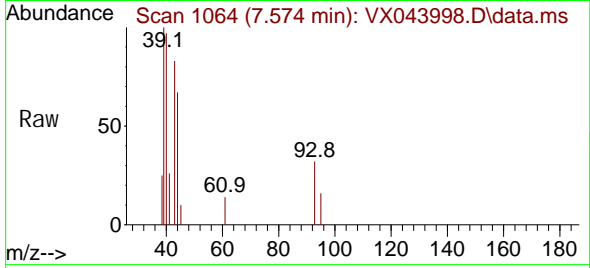
Ion	Ratio	Lower	Upper
130	100		
95	129.0	0.0	217.8



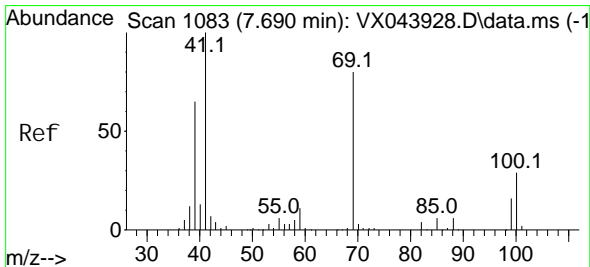
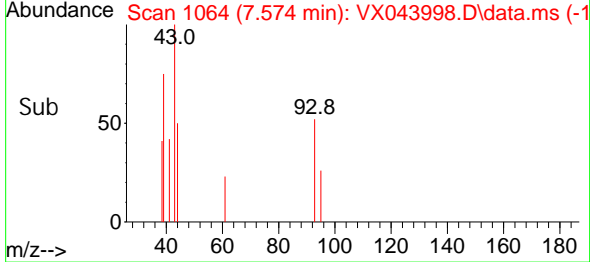
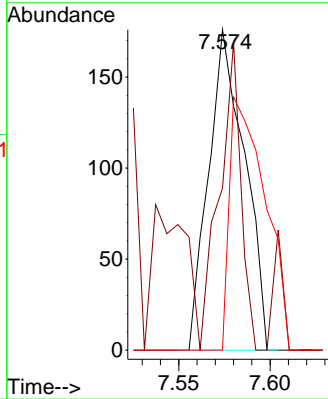


#46
 Di bromomethane
 Concen: 0.229 ug/l
 RT: 7.574 min Scan# 1064
 Delta R.T. -0.000 min
 Lab File: VX043998.D
 Acq: 25 Nov 2024 19:40

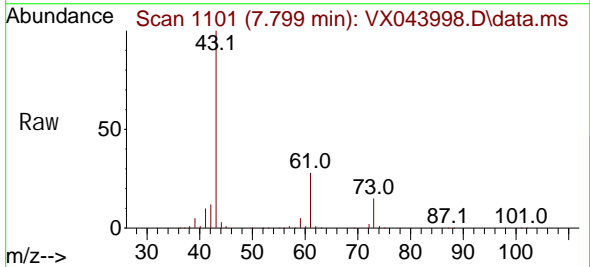
Instrument : MSVOA_X
 ClientSampleId : PB165160TB



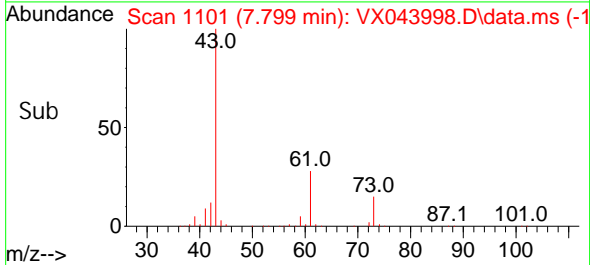
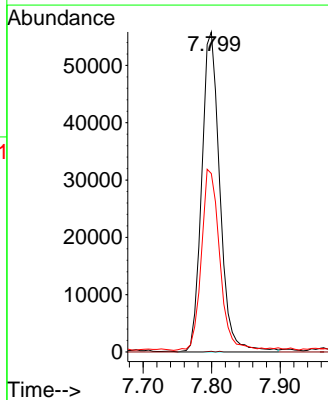
Tgt Ion: 93 Resp: 242
 Ion Ratio Lower Upper
 93 100
 95 57.4 66.2 99.4#
 174 77.7 69.6 104.4

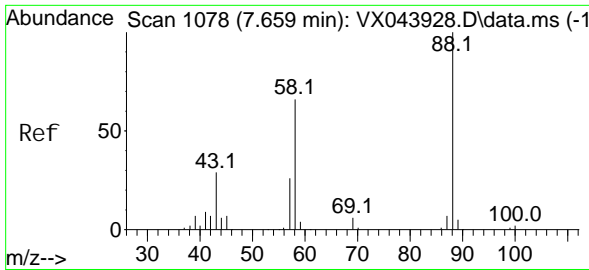


#48
 Methyl methacrylate
 Concen: 61.880 ug/l
 RT: 7.799 min Scan# 1101
 Delta R.T. 0.110 min
 Lab File: VX043998.D
 Acq: 25 Nov 2024 19:40



Tgt Ion: 41 Resp: 102889
 Ion Ratio Lower Upper
 41 100
 69 0.1 64.6 97.0#
 39 56.9 53.3 79.9

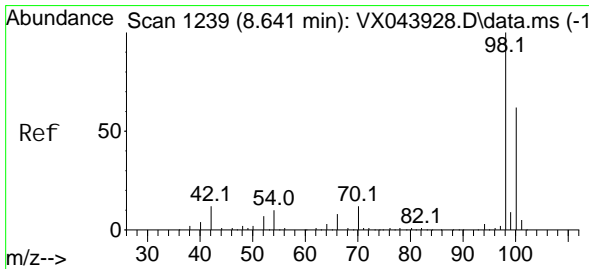
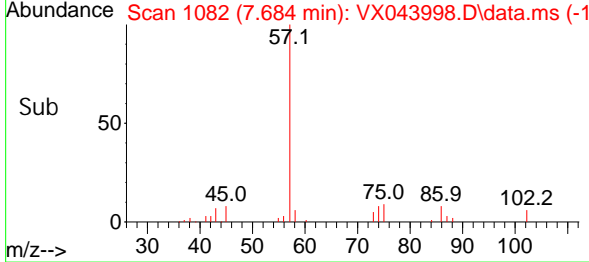
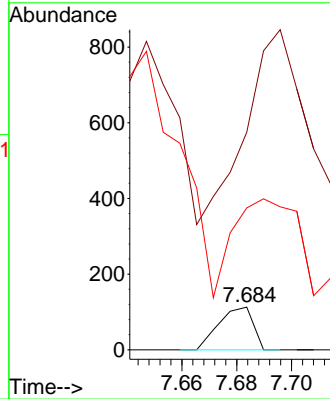
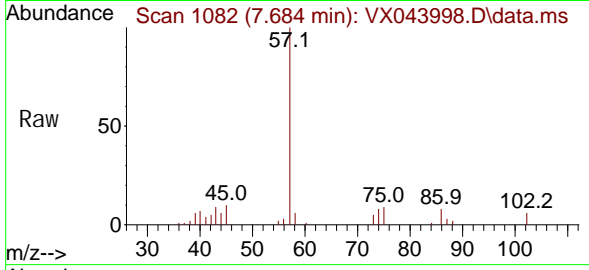




#49
 1, 4-Di oxane
 Concen: 3.309 ug/l
 RT: 7.684 min Scan# 1078
 Delta R.T. 0.024 min
 Lab File: VX043998.D
 Acq: 25 Nov 2024 19:40

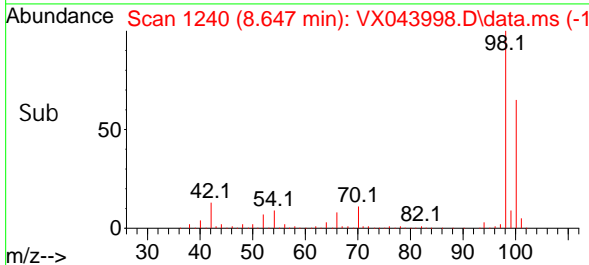
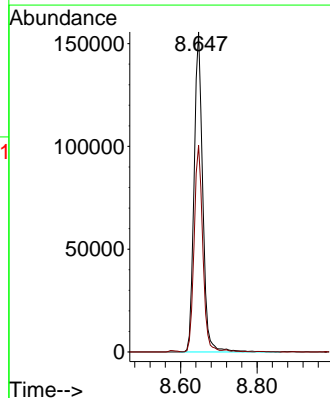
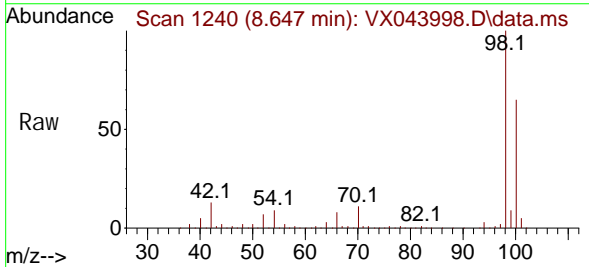
Instrument : MSVOA_X
 ClientSampleId : PB165160TB

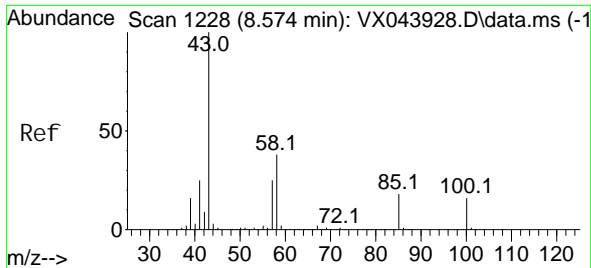
Tgt Ion	Resp	Lower	Upper
88	100		
43	0.0	26.8	40.2#
58	878.6	45.4	68.2#



#50
 Tol uene-d8
 Concen: 50.157 ug/l
 RT: 8.647 min Scan# 1240
 Delta R.T. 0.006 min
 Lab File: VX043998.D
 Acq: 25 Nov 2024 19:40

Tgt Ion	Resp	Lower	Upper
98	100		
100	64.0	52.6	79.0

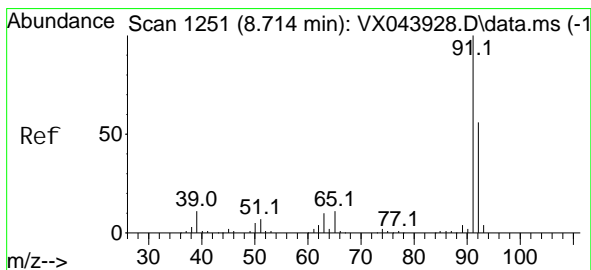
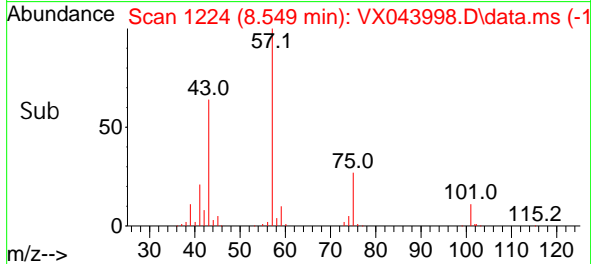
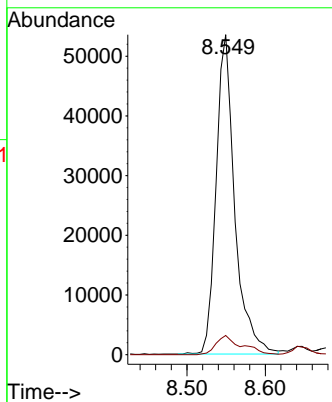
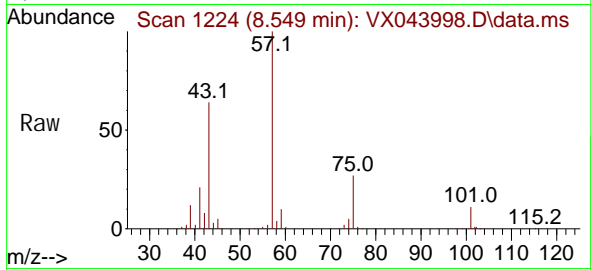




#51
 4-Methyl -2-Pentanone
 Concen: 41.895 ug/l
 RT: 8.549 min Scan# 111
 Delta R.T. -0.024 min
 Lab File: VX043998.D
 Acq: 25 Nov 2024 19:40

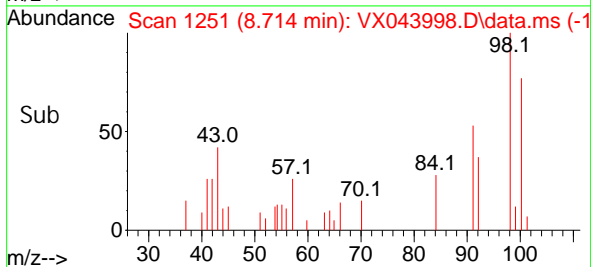
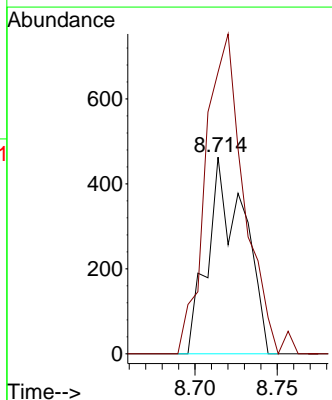
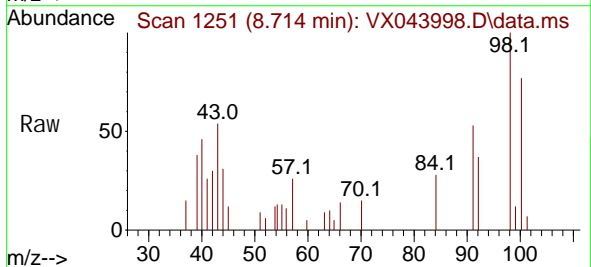
Instrument : MSVOA_X
 ClientSampleId : PB165160TB

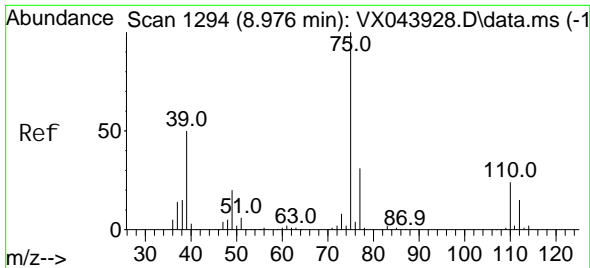
Tgt Ion: 43 Resp: 88593
 Ion Ratio Lower Upper
 43 100
 58 8.3 30.0 45.0#



#52
 Tol uene
 Concen: 0.217 ug/l
 RT: 8.714 min Scan# 1251
 Delta R.T. -0.000 min
 Lab File: VX043998.D
 Acq: 25 Nov 2024 19:40

Tgt Ion: 92 Resp: 710
 Ion Ratio Lower Upper
 92 100
 91 173.2 139.7 209.5





#53
 t-1, 3-Di chl oropropene
 Concen: 0.407 ug/l
 RT: 8.952 min Scan# 1124
 Delta R.T. -0.024 min
 Lab File: VX043998.D
 Acq: 25 Nov 2024 19:40

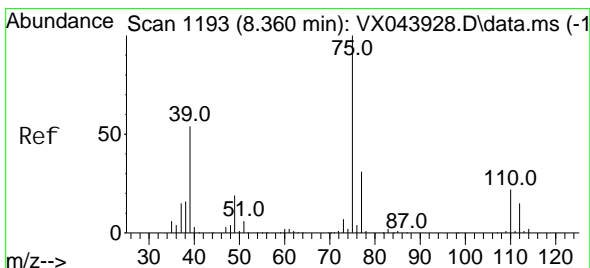
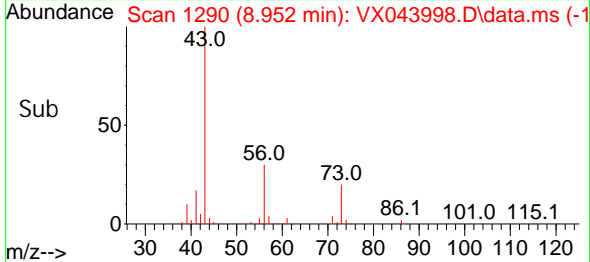
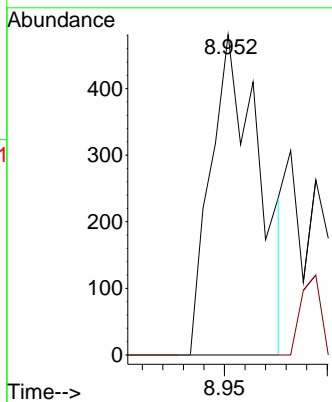
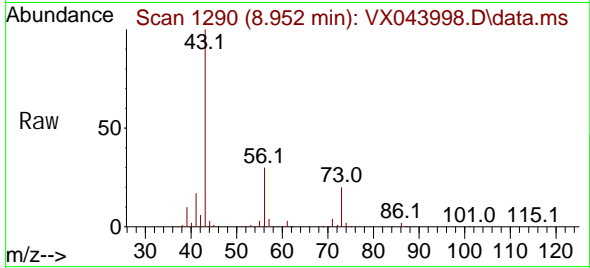
Instrument :

MSVOA_X

ClientSampleId :

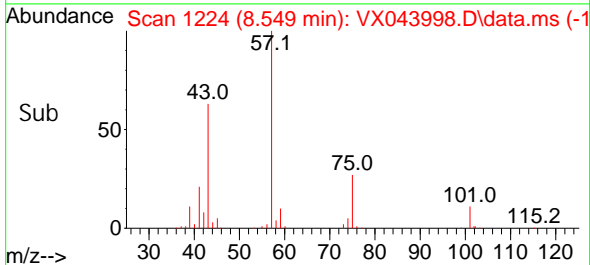
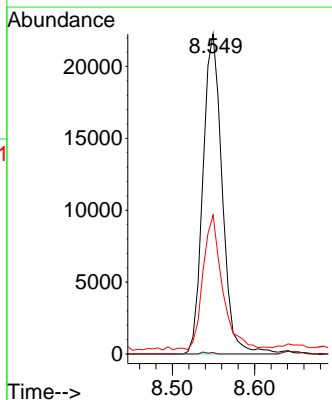
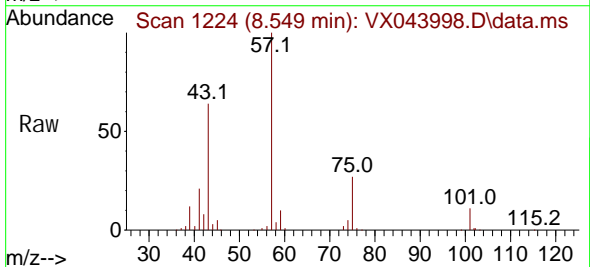
PB165160TB

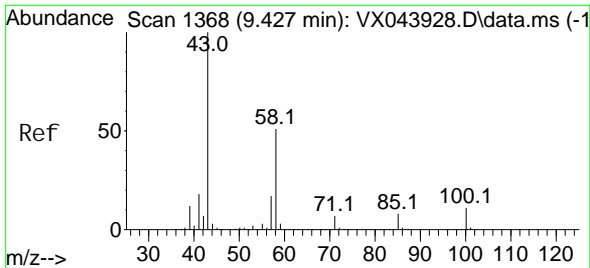
Tgt Ion: 75 Resp: 788
 Ion Ratio Lower Upper
 75 100
 77 0.0 25.1 37.7#



#54
 ci s-1, 3-Di chl oropropene
 Concen: 17.033 ug/l
 RT: 8.549 min Scan# 1224
 Delta R.T. 0.189 min
 Lab File: VX043998.D
 Acq: 25 Nov 2024 19:40

Tgt Ion: 75 Resp: 36151
 Ion Ratio Lower Upper
 75 100
 77 0.5 25.2 37.8#
 39 41.6 43.1 64.7#





#59
 2-Hexanone
 Concen: 63.355 ug/l
 RT: 9.378 min Scan# 1360
 Delta R.T. -0.049 min
 Lab File: VX043998.D
 Acq: 25 Nov 2024 19:40

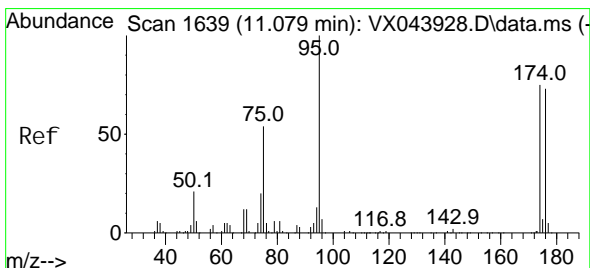
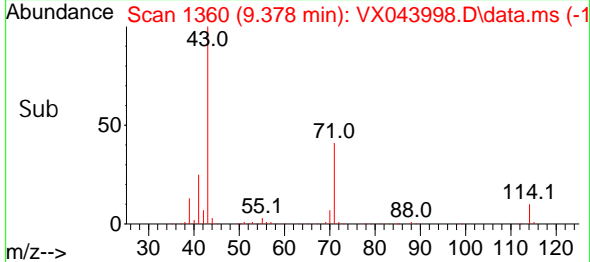
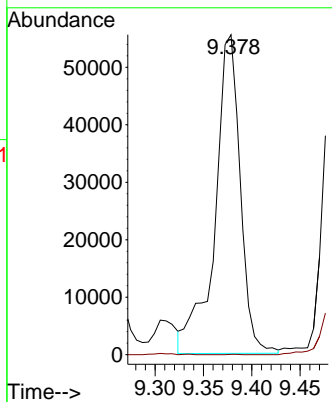
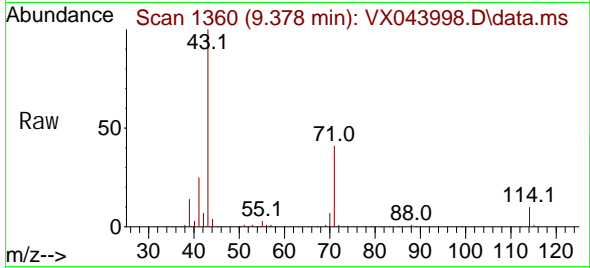
Instrument :

MSVOA_X

ClientSampleId :

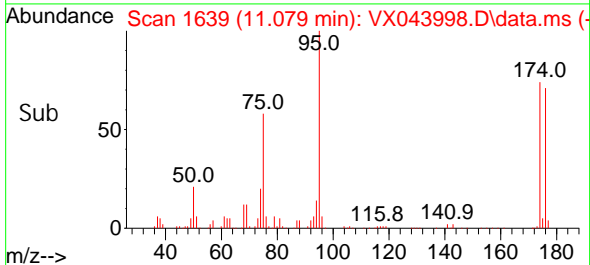
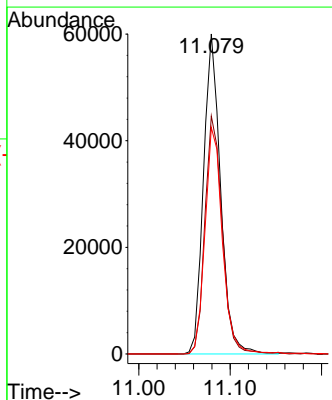
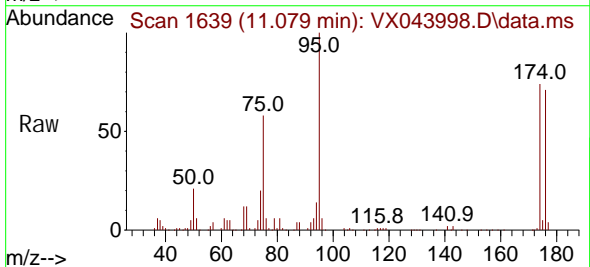
PB165160TB

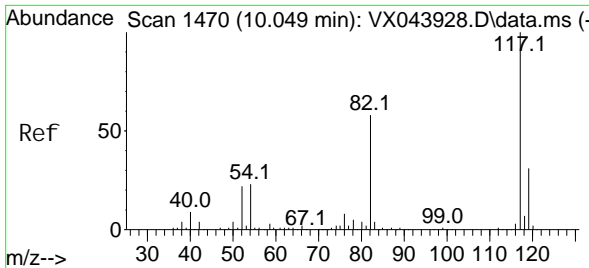
Tgt Ion: 43 Resp: 100697
 Ion Ratio Lower Upper
 43 100
 58 0.0 25.9 77.6#



#62
 4-Bromofluorobenzene
 Concen: 47.068 ug/l
 RT: 11.079 min Scan# 1639
 Delta R.T. -0.000 min
 Lab File: VX043998.D
 Acq: 25 Nov 2024 19:40

Tgt Ion: 95 Resp: 77726
 Ion Ratio Lower Upper
 95 100
 174 75.5 0.0 150.4
 176 72.4 0.0 146.0

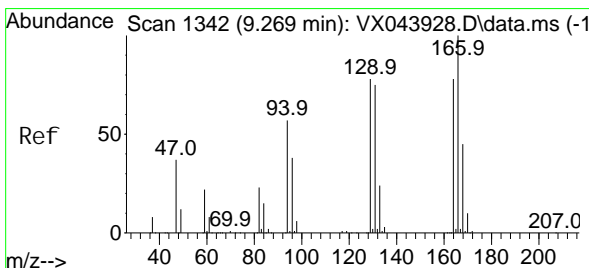
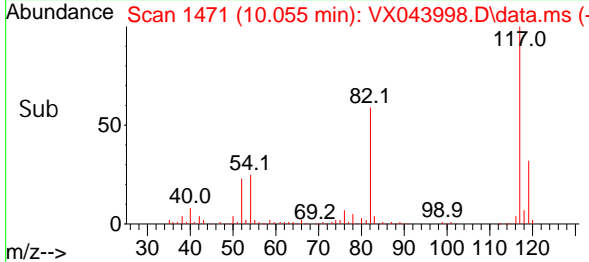
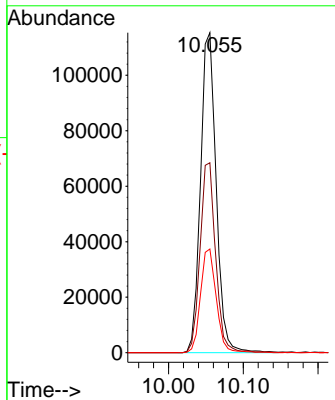
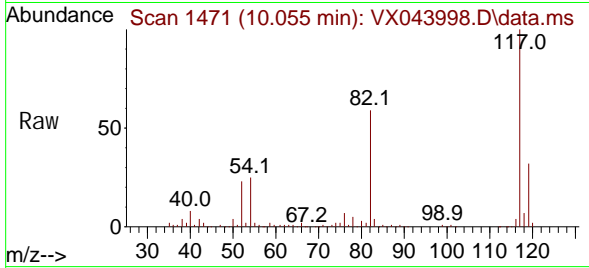




#63
 Chlorobenzene-d5
 Concen: 50.000 ug/l
 RT: 10.055 min Scan# 1471
 Delta R.T. 0.006 min
 Lab File: VX043998.D
 Acq: 25 Nov 2024 19:40

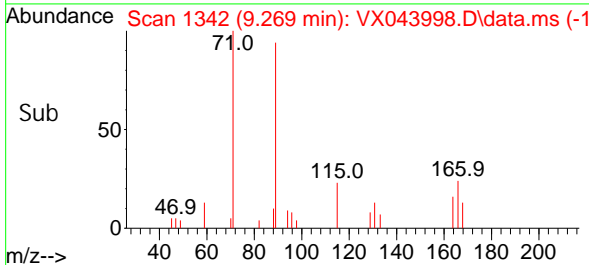
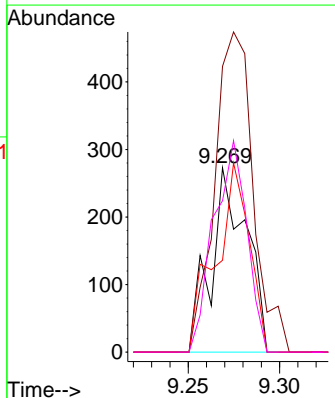
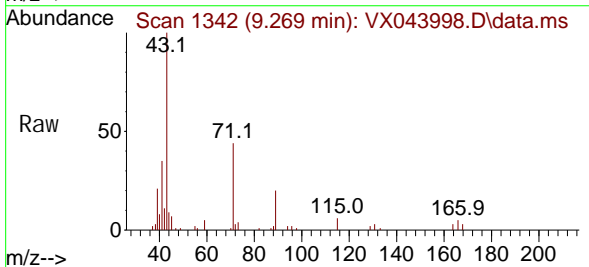
Instrument : MSVOA_X
 Client Sample Id : PB165160TB

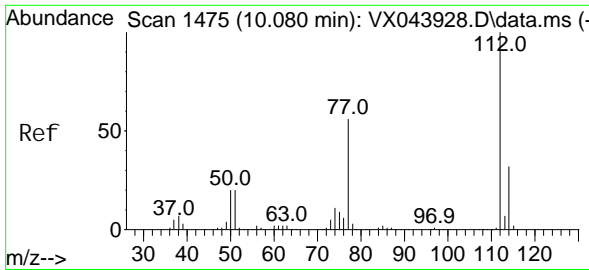
Tgt Ion	Resp	Lower	Upper
117	167991		
82	59.4	46.4	69.6
119	32.4	24.6	37.0



#64
 Tetrachloroethene
 Concen: 0.334 ug/l
 RT: 9.269 min Scan# 1342
 Delta R.T. -0.000 min
 Lab File: VX043998.D
 Acq: 25 Nov 2024 19:40

Tgt Ion	Resp	Lower	Upper
164	370		
166	154.9	102.1	153.1#
129	49.8	79.6	119.4#
131	82.1	76.9	115.3

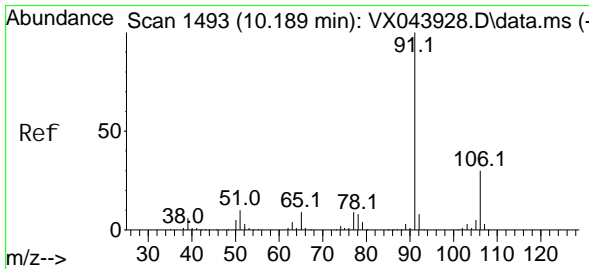
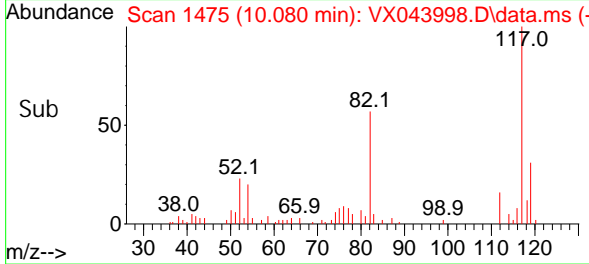
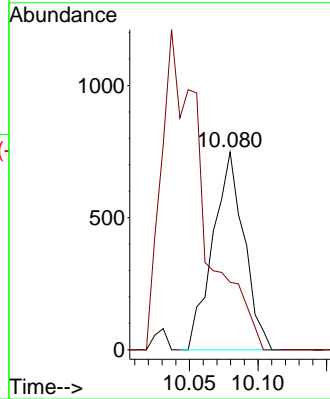
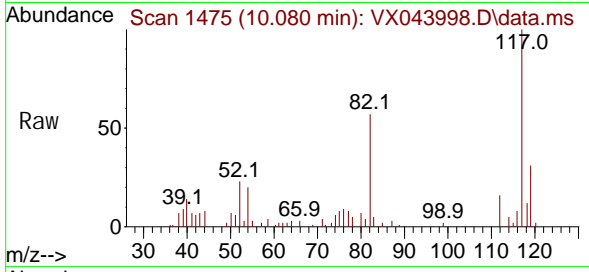




#65
 Chlorobenzene
 Concen: 0.321 ug/l
 RT: 10.080 min Scan# 1475
 Delta R.T. -0.000 min
 Lab File: VX043998.D
 Acq: 25 Nov 2024 19:40

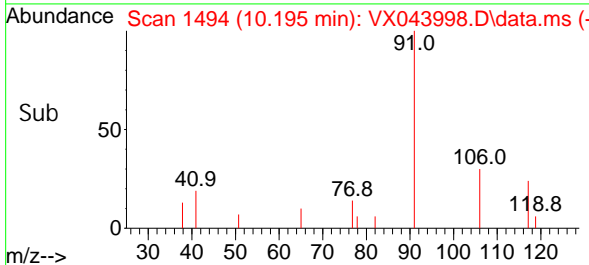
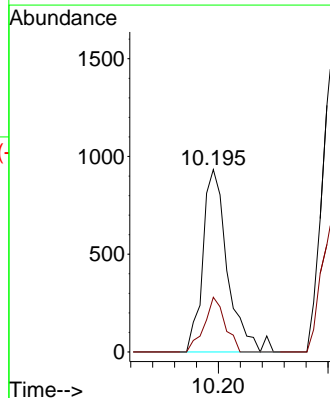
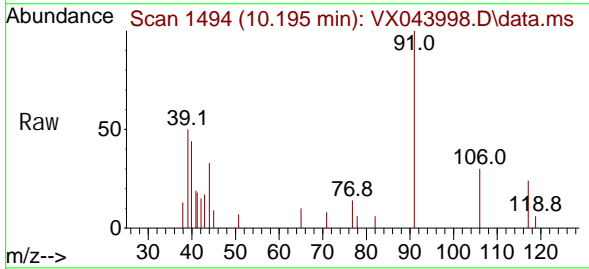
Instrument : MSVOA_X
 ClientSampleId : PB165160TB

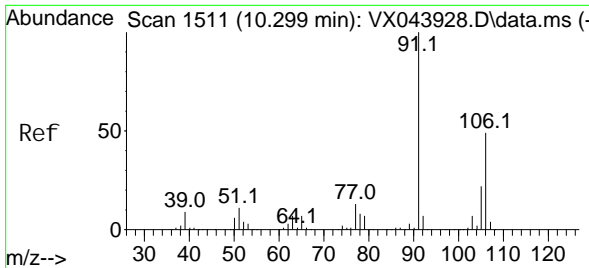
Tgt Ion: 112 Resp: 1184
 Ion Ratio Lower Upper
 112 100
 114 34.2 25.4 38.0



#67
 Ethyl Benzene
 Concen: 0.234 ug/l
 RT: 10.195 min Scan# 1494
 Delta R.T. 0.006 min
 Lab File: VX043998.D
 Acq: 25 Nov 2024 19:40

Tgt Ion: 91 Resp: 1461
 Ion Ratio Lower Upper
 91 100
 106 30.0 23.6 35.4

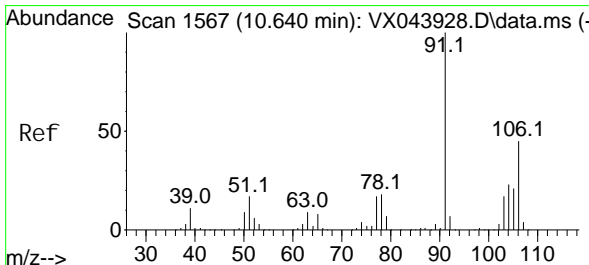
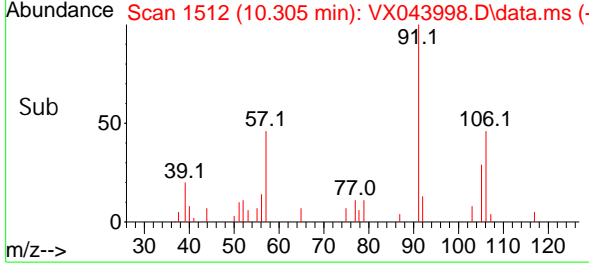
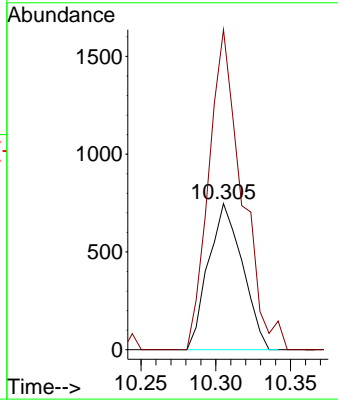
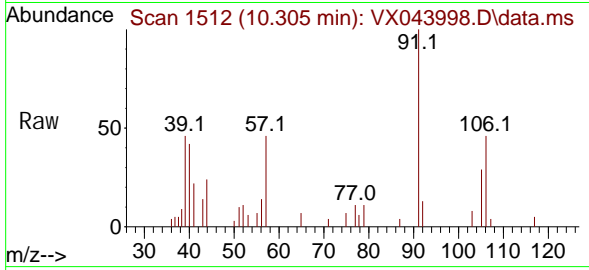




#68
 m/p-Xyl enes
 Concen: 0.508 ug/l
 RT: 10.305 min Scan# 1512
 Delta R.T. 0.006 min
 Lab File: VX043998.D
 Acq: 25 Nov 2024 19:40

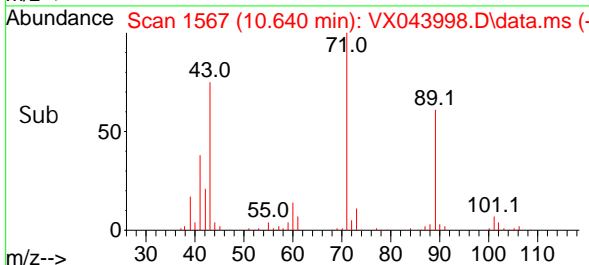
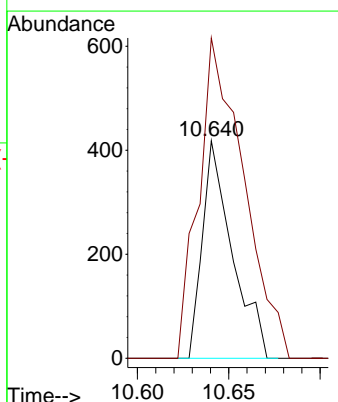
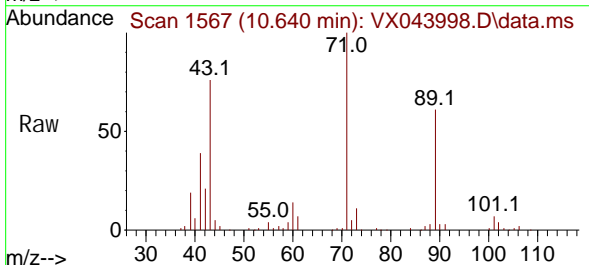
Instrument : MSVOA_X
 ClientSampleId : PB165160TB

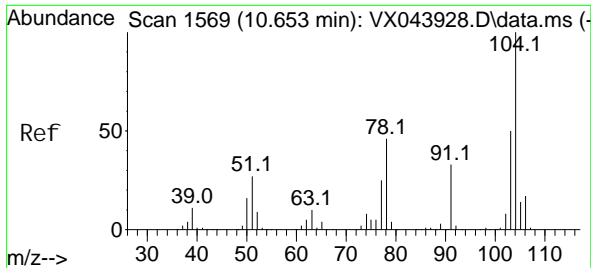
Tgt Ion: 106 Resp: 1185
 Ion Ratio Lower Upper
 106 100
 91 213.1 168.1 252.1



#69
 o-Xyl ene
 Concen: 0.208 ug/l
 RT: 10.640 min Scan# 1567
 Delta R.T. -0.000 min
 Lab File: VX043998.D
 Acq: 25 Nov 2024 19:40

Tgt Ion: 106 Resp: 474
 Ion Ratio Lower Upper
 106 100
 91 222.2 110.2 330.6

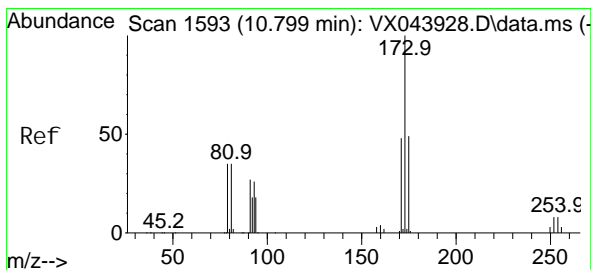
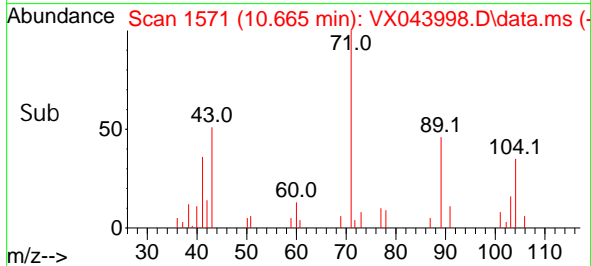
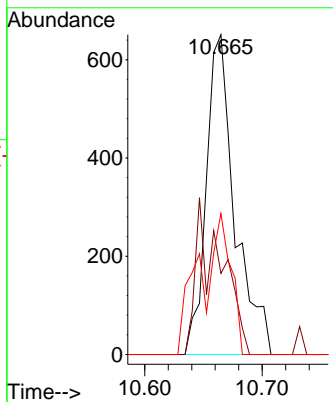
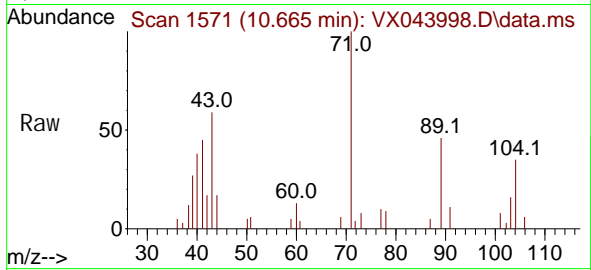




#70
 Styrene
 Concen: 0.292 ug/l
 RT: 10.665 min Scan# 1571
 Delta R.T. 0.012 min
 Lab File: VX043998.D
 Acq: 25 Nov 2024 19:40

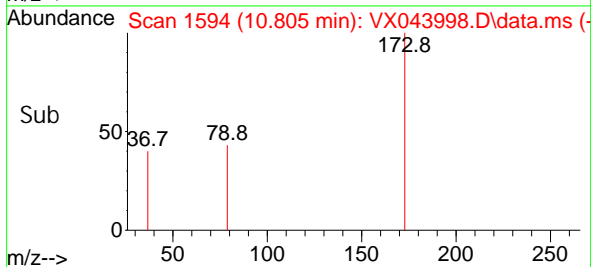
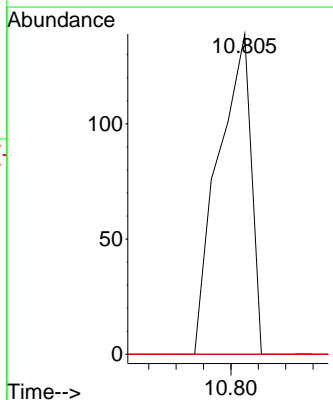
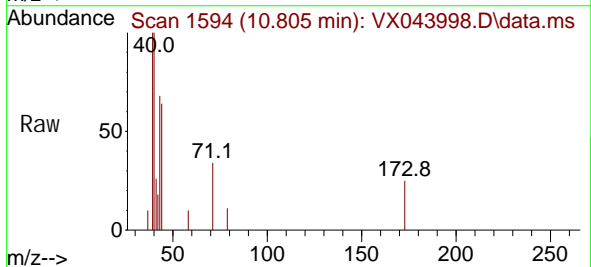
Instrument :
 MSVOA_X
 ClientSampleId :
 PB165160TB

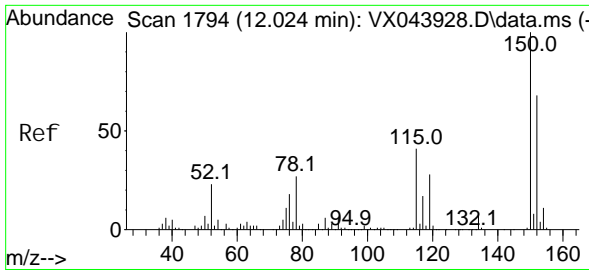
Tgt Ion	Ratio	Lower	Upper
104	100		
78	0.0	42.2	63.2#
103	28.0	44.7	67.1#



#71
 Bromoform
 Concen: 1.336 ug/l
 RT: 10.805 min Scan# 1594
 Delta R.T. 0.006 min
 Lab File: VX043998.D
 Acq: 25 Nov 2024 19:40

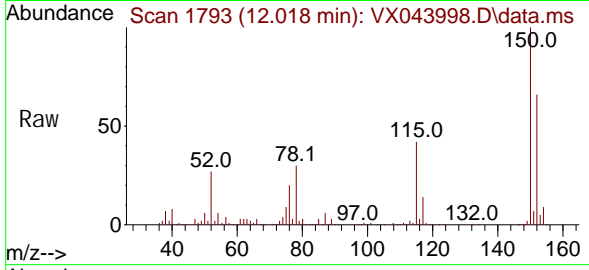
Tgt Ion	Ratio	Lower	Upper
173	100		
175	0.0	24.1	72.2#
254	0.0	0.0	0.0



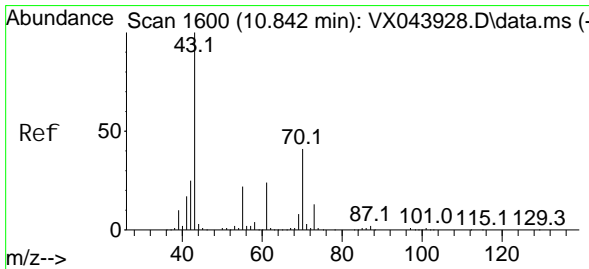
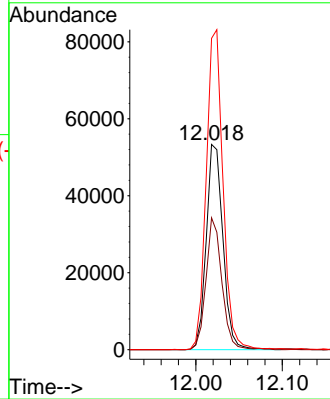
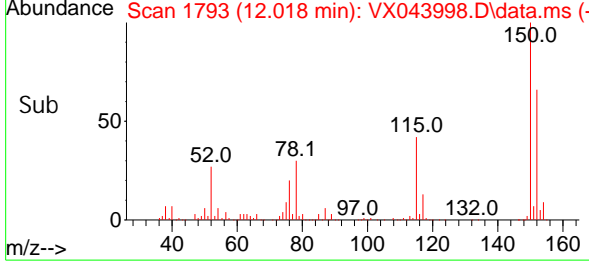


#72
 1, 4-Di chl orobenzene-d4
 Concen: 50.000 ug/l
 RT: 12.018 min Scan# 11
 Delta R.T. -0.006 min
 Lab File: VX043998.D
 Acq: 25 Nov 2024 19: 40

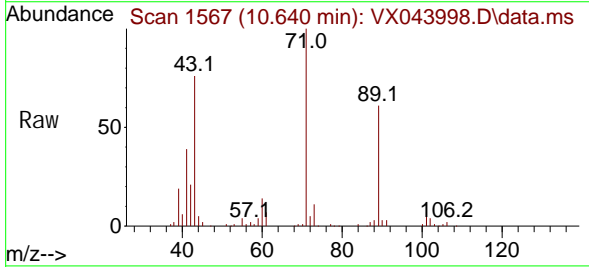
Instrument : MSVOA_X
 ClientSampleId : PB165160TB



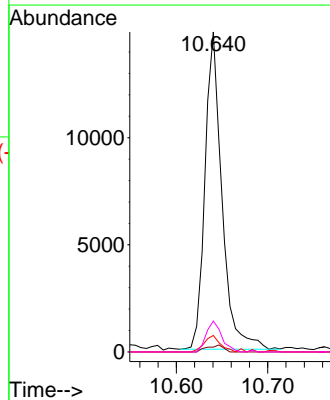
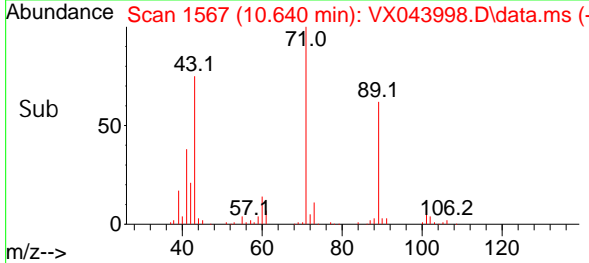
Tgt Ion: 152 Resp: 71613
 Ion Ratio Lower Upper
 152 100
 115 61.0 45.4 136.2
 150 156.2 0.0 353.0

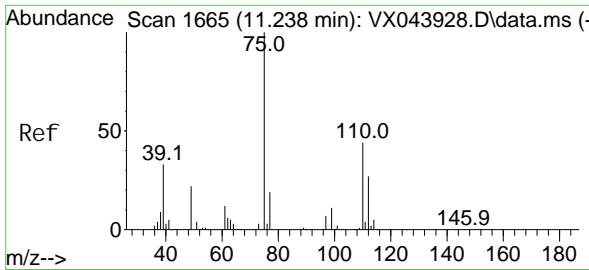


#74
 N-aml acetate
 Concen: 7.482 ug/l
 RT: 10.640 min Scan# 1567
 Delta R.T. -0.201 min
 Lab File: VX043998.D
 Acq: 25 Nov 2024 19: 40



Tgt Ion: 43 Resp: 19080
 Ion Ratio Lower Upper
 43 100
 70 2.1 32.2 48.2#
 55 4.9 18.1 27.1#
 61 8.8 18.4 27.6#

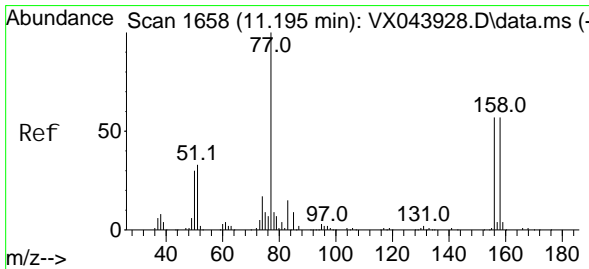
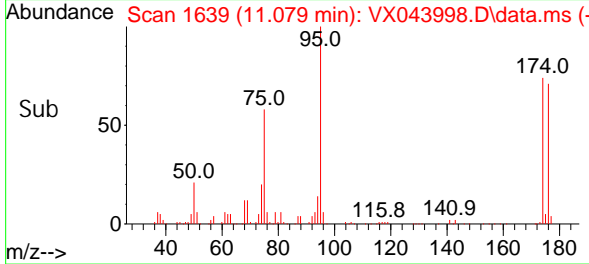
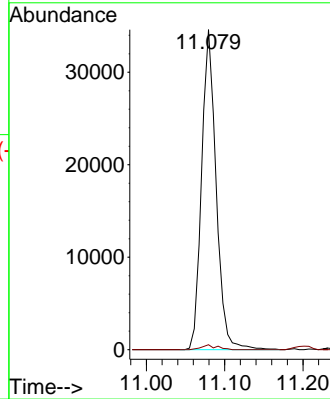
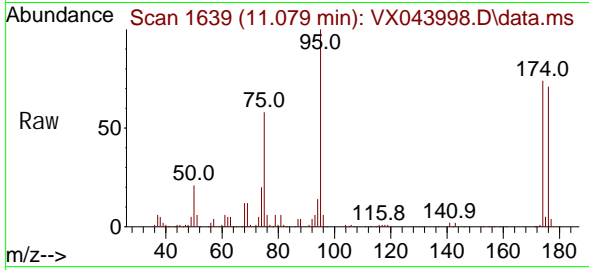




#76
 1, 2, 3-Tri chloropropane
 Concen: 28.450 ug/l
 RT: 11.079 min Scan# 1659
 Delta R.T. -0.159 min
 Lab File: VX043998.D
 Acq: 25 Nov 2024 19:40

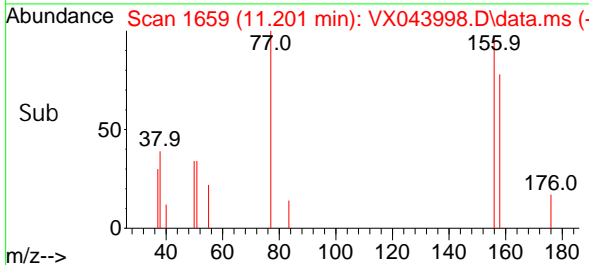
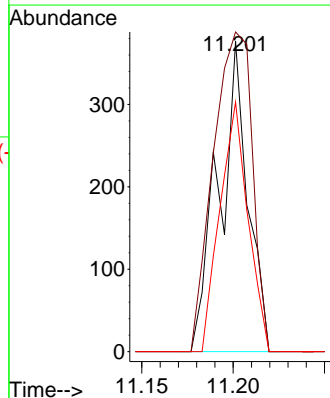
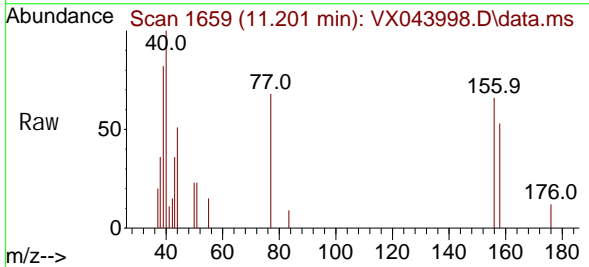
Instrument : MSVOA_X
 ClientSampleId : PB165160TB

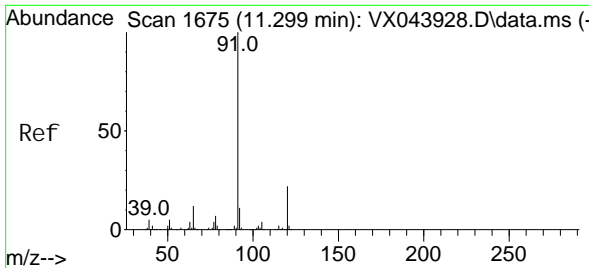
Tgt Ion: 75 Resp: 44679
 Ion Ratio Lower Upper
 75 100
 77 1.6 21.8 65.3#



#77
 Bromobenzene
 Concen: 0.316 ug/l
 RT: 11.201 min Scan# 1659
 Delta R.T. 0.006 min
 Lab File: VX043998.D
 Acq: 25 Nov 2024 19:40

Tgt Ion: 156 Resp: 415
 Ion Ratio Lower Upper
 156 100
 77 138.8 83.4 250.1
 158 78.1 47.6 142.8

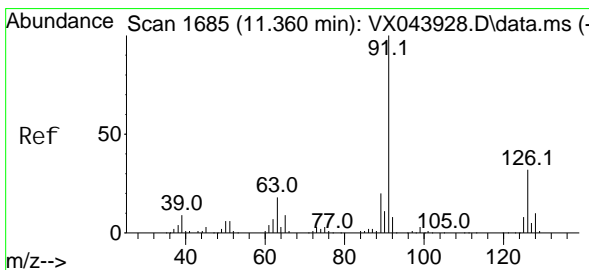
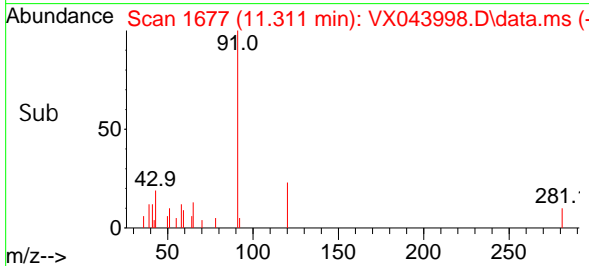
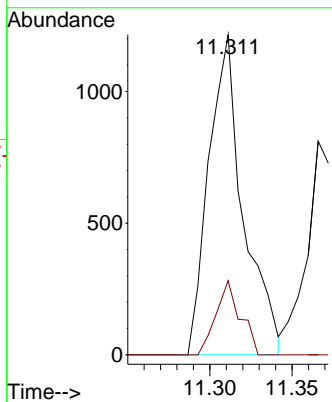
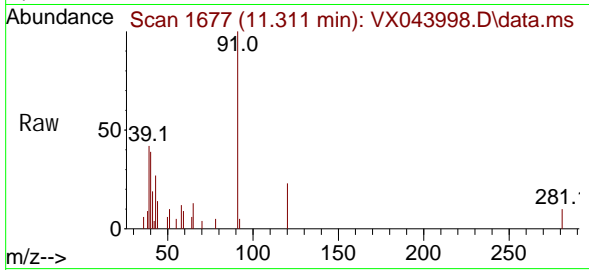




#78
 n-propyl benzene
 Concen: 0.288 ug/l
 RT: 11.311 min Scan# 1677
 Delta R.T. 0.012 min
 Lab File: VX043998.D
 Acq: 25 Nov 2024 19:40

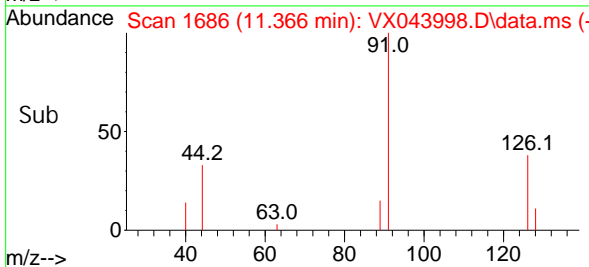
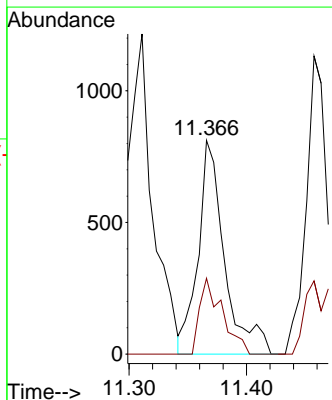
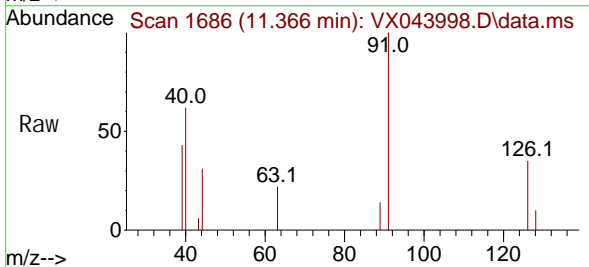
Instrument : MSVOA_X
 ClientSampleId : PB165160TB

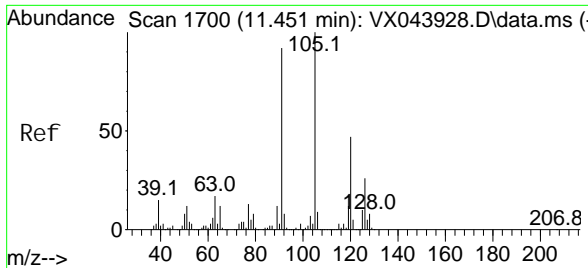
Tgt Ion: 91 Resp: 1772
 Ion Ratio Lower Upper
 91 100
 120 16.4 11.5 34.4



#79
 2-Chlorotoluene
 Concen: 0.325 ug/l
 RT: 11.366 min Scan# 1686
 Delta R.T. 0.006 min
 Lab File: VX043998.D
 Acq: 25 Nov 2024 19:40

Tgt Ion: 91 Resp: 1265
 Ion Ratio Lower Upper
 91 100
 126 30.5 16.6 49.8

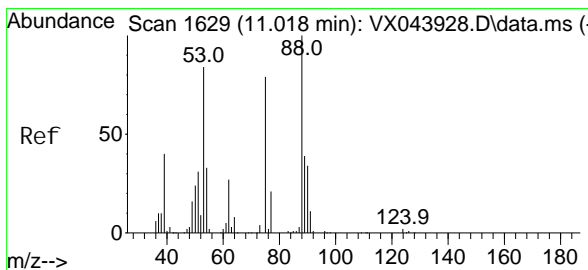
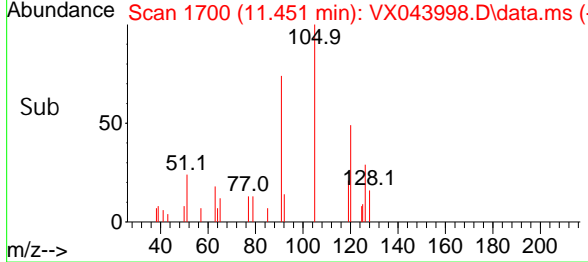
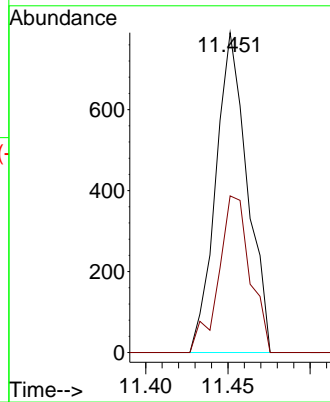
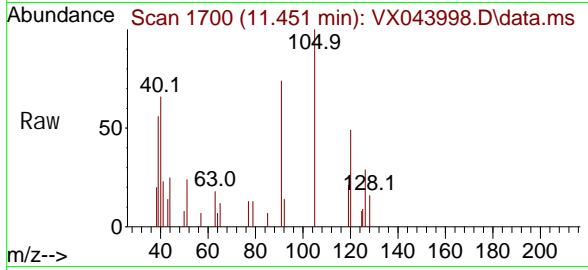




#80
 1, 3, 5-Tri methyl benzene
 Concen: 0.233 ug/l
 RT: 11.451 min Scan# 11
 Delta R.T. -0.000 min
 Lab File: VX043998.D
 Acq: 25 Nov 2024 19:40

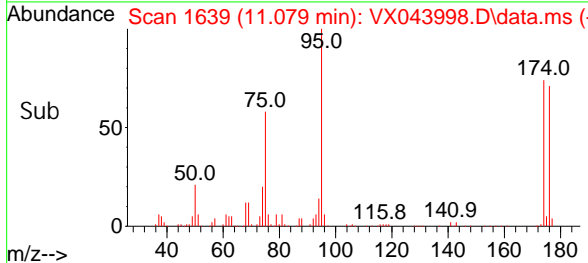
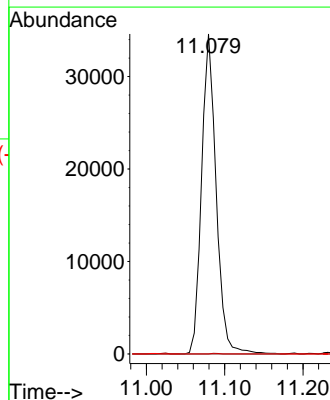
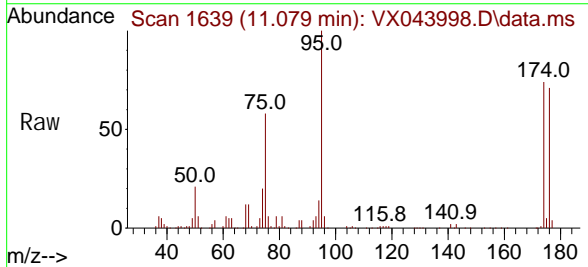
Instrument : MSVOA_X
 ClientSampleId : PB165160TB

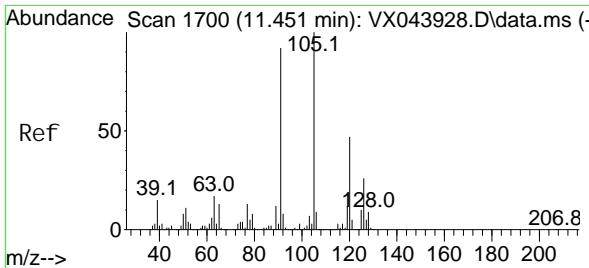
Tgt Ion: 105 Resp: 1054
 Ion Ratio Lower Upper
 105 100
 120 49.1 23.3 69.8



#81
 trans-1, 4-Di chl oro-2-butene
 Concen: 77.632 ug/l
 RT: 11.079 min Scan# 1639
 Delta R.T. 0.061 min
 Lab File: VX043998.D
 Acq: 25 Nov 2024 19:40

Tgt Ion: 75 Resp: 44679
 Ion Ratio Lower Upper
 75 100
 53 0.1 86.7 130.1#
 89 0.0 38.2 57.2#

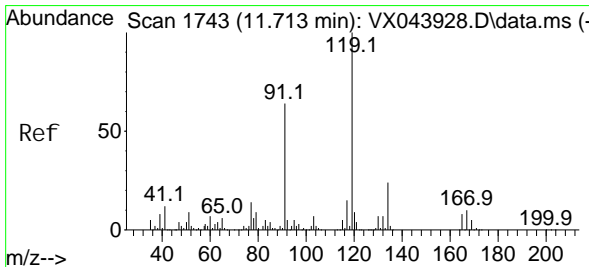
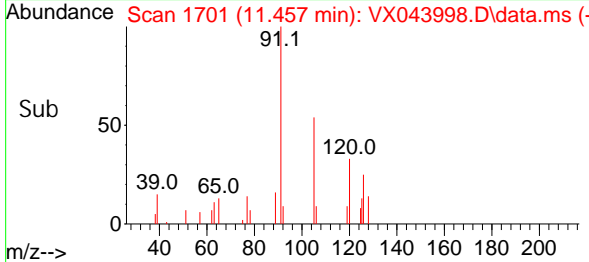
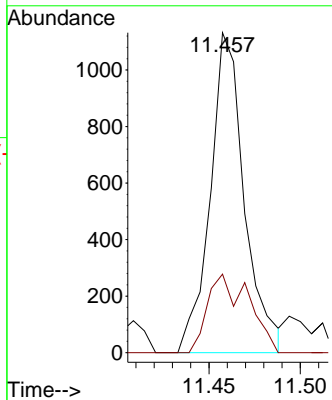
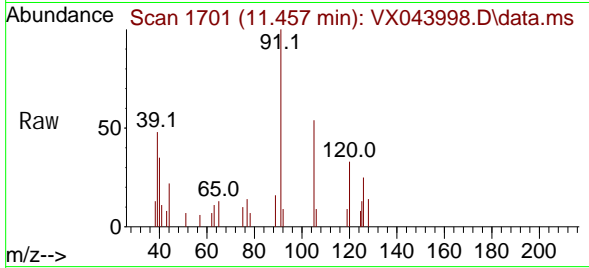




#82
 4-Chlorotoluene
 Concen: 0.335 ug/l
 RT: 11.457 min Scan# 1701
 Delta R.T. 0.006 min
 Lab File: VX043998.D
 Acq: 25 Nov 2024 19:40

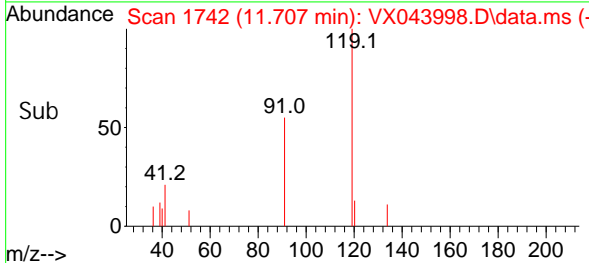
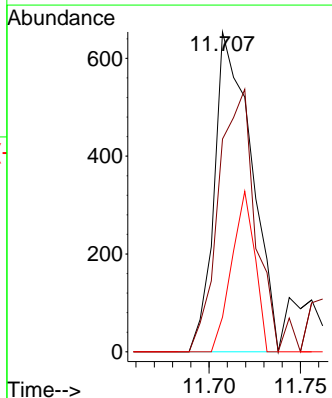
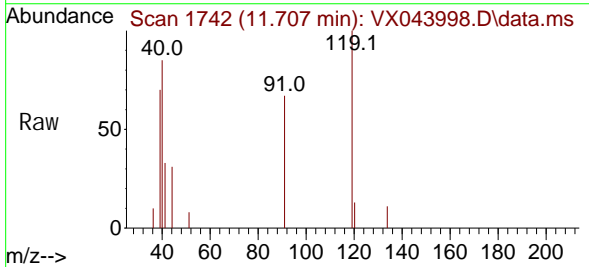
Instrument : MSVOA_X
 ClientSampleId : PB165160TB

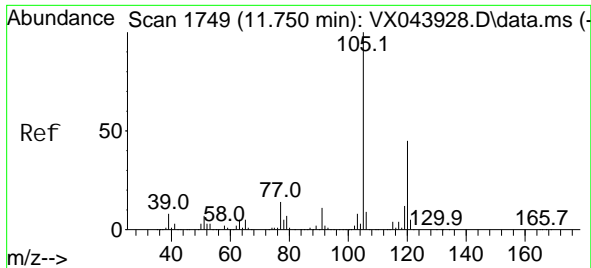
Tgt Ion: 91 Resp: 1472
 Ion Ratio Lower Upper
 91 100
 126 29.7 14.3 42.9



#83
 tert-Butyl benzene
 Concen: 0.205 ug/l
 RT: 11.707 min Scan# 1742
 Delta R.T. -0.006 min
 Lab File: VX043998.D
 Acq: 25 Nov 2024 19:40

Tgt Ion: 119 Resp: 921
 Ion Ratio Lower Upper
 119 100
 91 83.3 31.0 93.0
 134 31.5 11.6 34.8

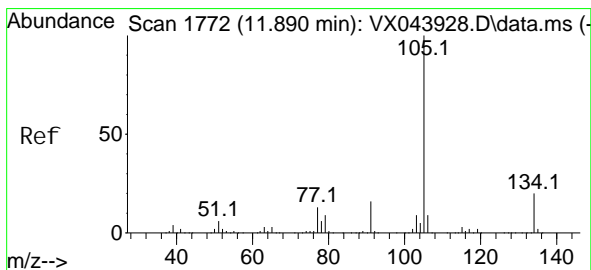
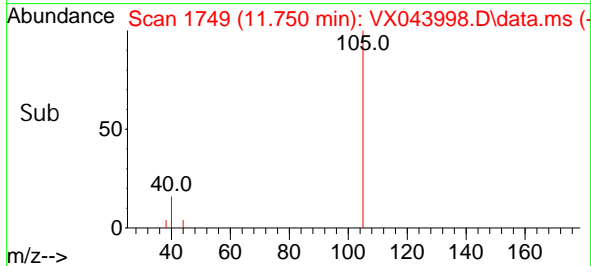
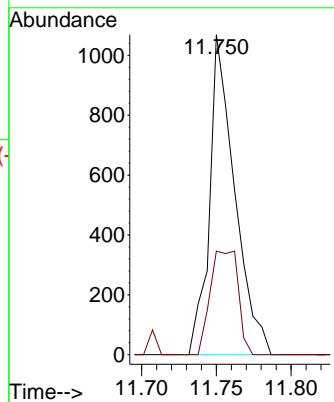
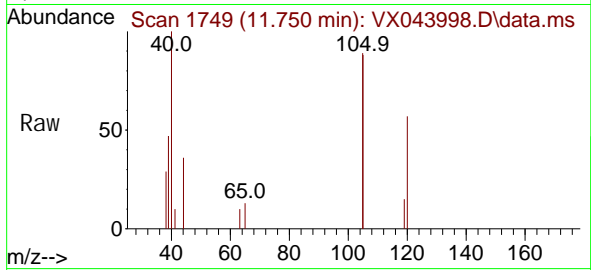




#84
 1, 2, 4-Tri methyl benzene
 Concen: 0.278 ug/l
 RT: 11.750 min Scan# 1749
 Delta R.T. -0.000 min
 Lab File: VX043998.D
 Acq: 25 Nov 2024 19:40

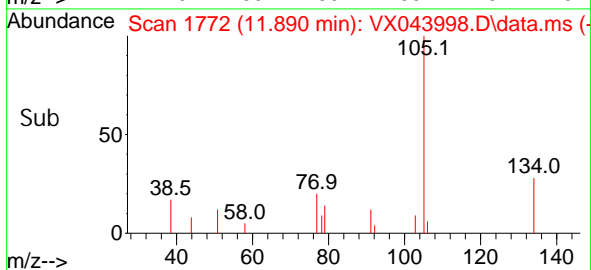
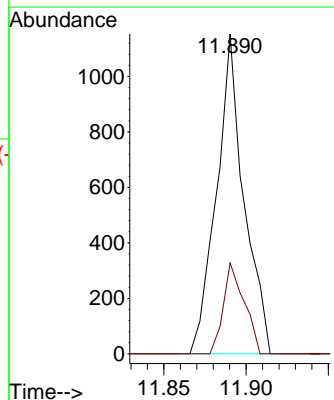
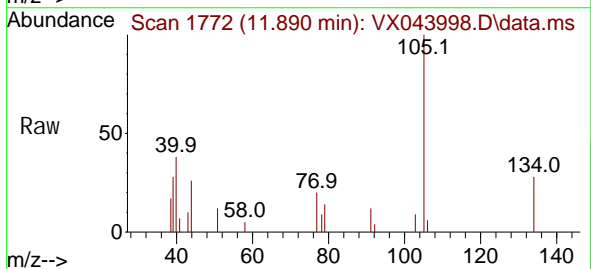
Instrument : MSVOA_X
 ClientSampleId : PB165160TB

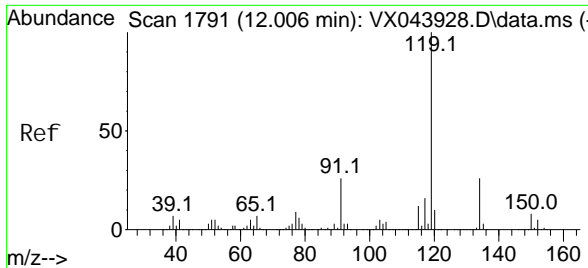
Tgt Ion: 105 Resp: 1254
 Ion Ratio Lower Upper
 105 100
 120 36.0 21.9 65.7



#85
 sec-Butyl benzene
 Concen: 0.242 ug/l
 RT: 11.890 min Scan# 1772
 Delta R.T. -0.000 min
 Lab File: VX043998.D
 Acq: 25 Nov 2024 19:40

Tgt Ion: 105 Resp: 1332
 Ion Ratio Lower Upper
 105 100
 134 21.7 9.7 29.1





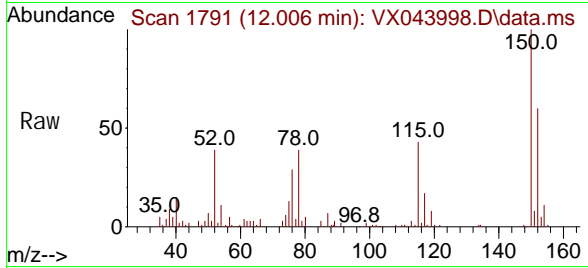
#86
 p-Iso propyl tol uene
 Concen: 0.257 ug/l
 RT: 12.006 min Scan# 1791
 Delta R.T. -0.000 min
 Lab File: VX043998.D
 Acq: 25 Nov 2024 19:40

Instrument :

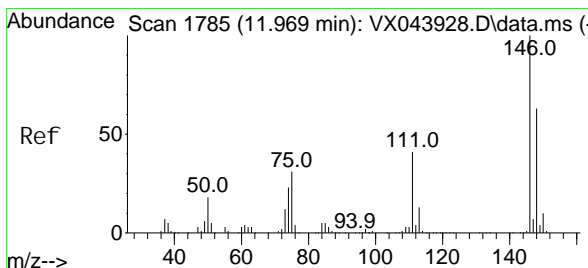
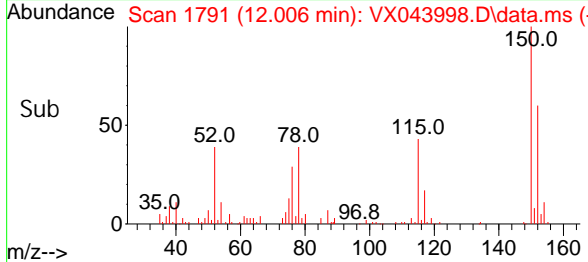
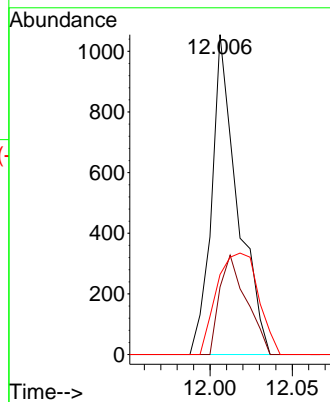
MSVOA_X

Client SampleId :

PB165160TB

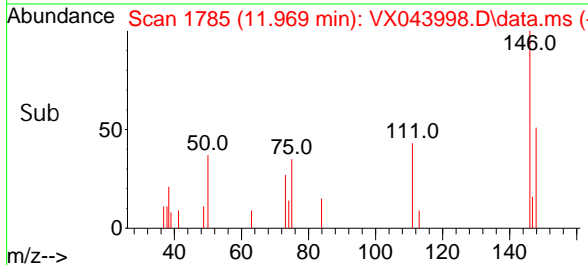
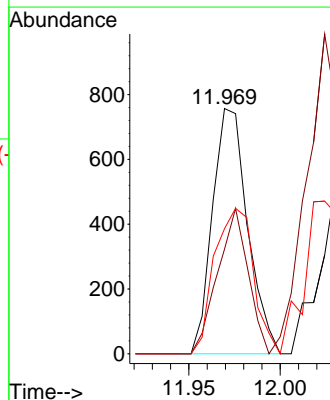
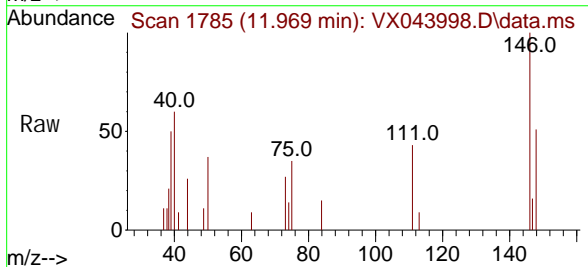


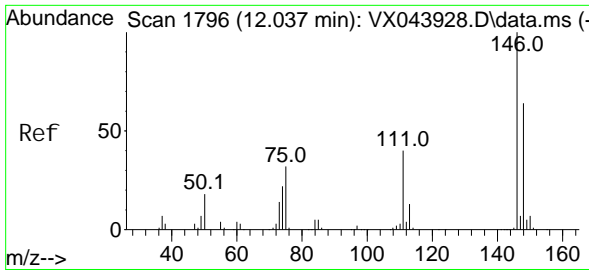
Tgt Ion	Resp	Lower	Upper
119	100		
134	32.2	13.0	38.9
91	51.1	13.0	38.9#



#87
 1,3-Di chl orobenzene
 Concen: 0.424 ug/l
 RT: 11.969 min Scan# 1785
 Delta R.T. -0.000 min
 Lab File: VX043998.D
 Acq: 25 Nov 2024 19:40

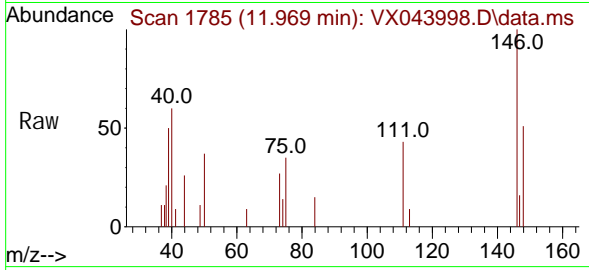
Tgt Ion	Resp	Lower	Upper
146	100		
111	51.2	21.1	63.3
148	65.5	31.7	95.1



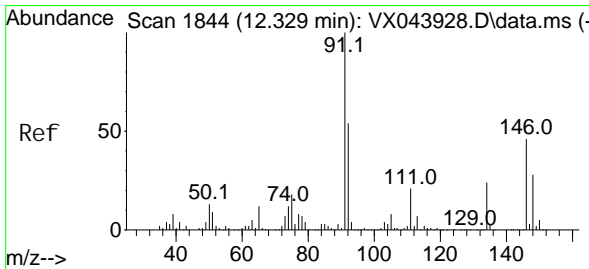
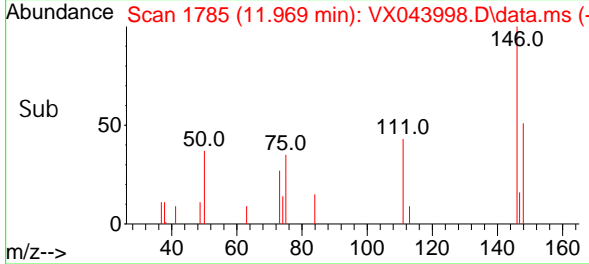
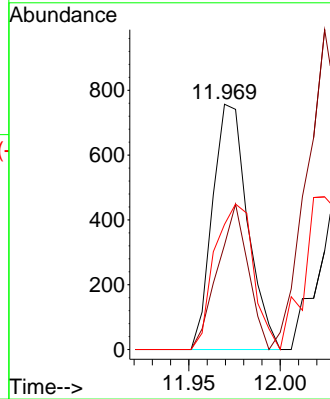


#88
 1, 4-Di chl orobenzene
 Concen: 0.416 ug/l
 RT: 11.969 min Scan# 11
 Del ta R.T. -0.067 min
 Lab File: VX043998.D
 Acq: 25 Nov 2024 19:40

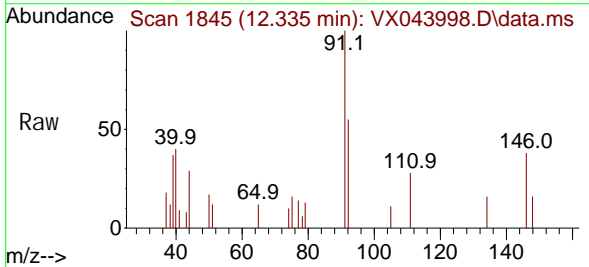
Instrument : MSVOA_X
 ClientSampleId : PB165160TB



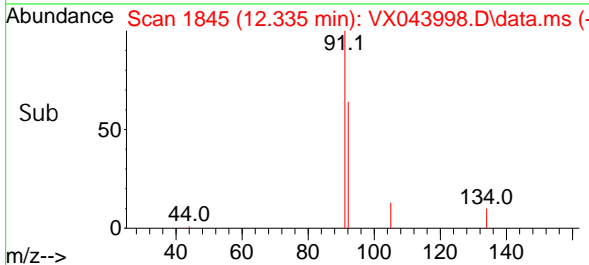
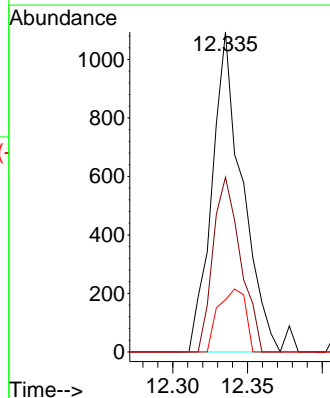
Tgt Ion: 146 Resp: 1014
 Ion Ratio Lower Upper
 146 100
 111 51.2 20.1 60.3
 148 65.5 30.9 92.8

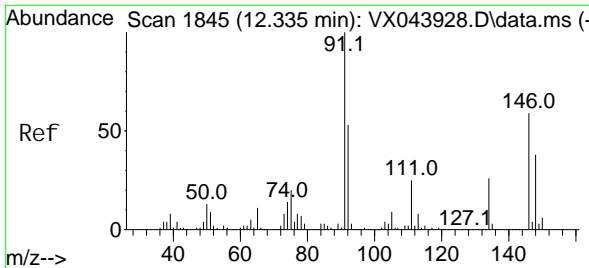


#89
 n-Butyl benzene
 Concen: 0.391 ug/l
 RT: 12.335 min Scan# 1845
 Del ta R.T. 0.006 min
 Lab File: VX043998.D
 Acq: 25 Nov 2024 19:40



Tgt Ion: 91 Resp: 1540
 Ion Ratio Lower Upper
 91 100
 92 49.6 26.6 79.8
 134 17.6 12.4 37.2

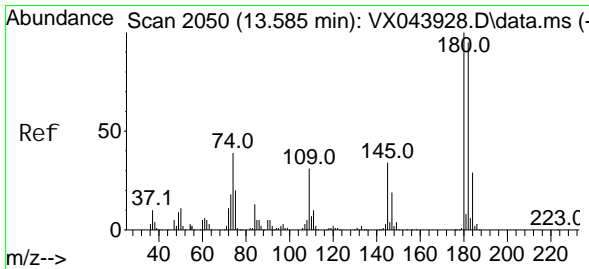
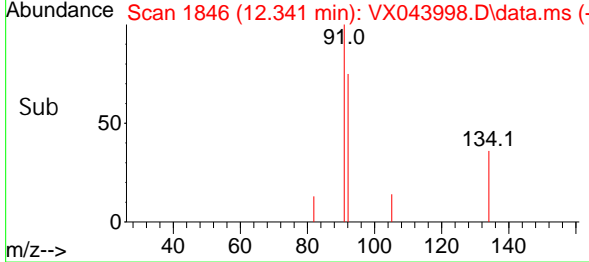
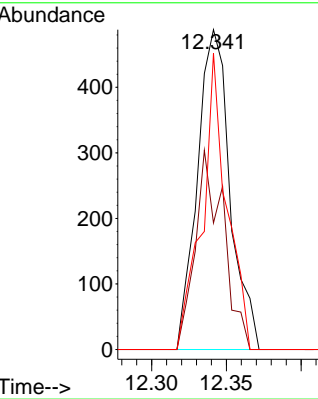
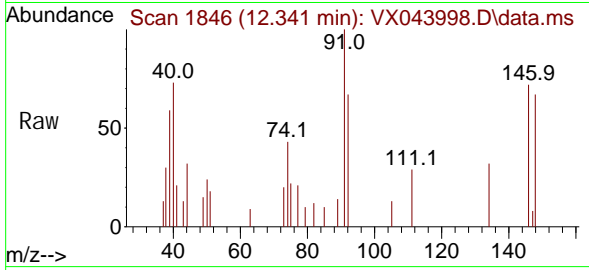




#91
 1, 2-Di chl orobenzene
 Concen: 0.307 ug/l
 RT: 12.341 min Scan# 1846
 Delta R.T. 0.006 min
 Lab File: VX043998.D
 Acq: 25 Nov 2024 19:40

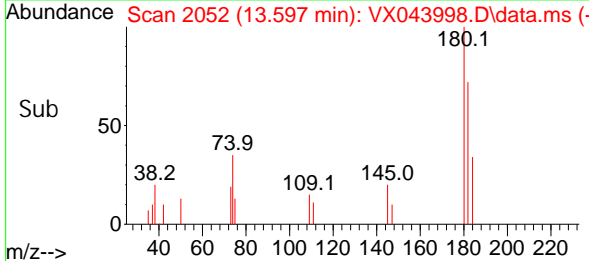
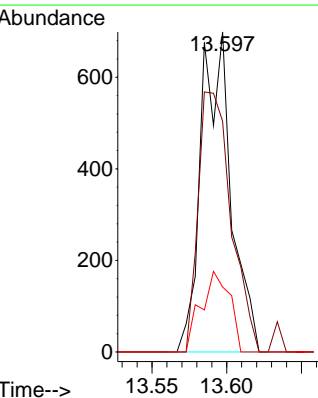
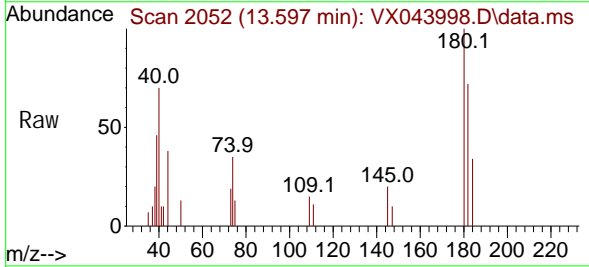
Instrument : MSVOA_X
 ClientSampleId : PB165160TB

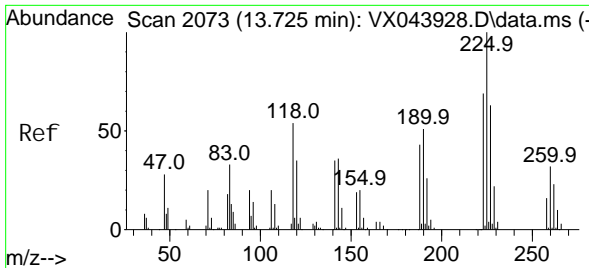
Tgt Ion	Resp	Lower	Upper
146	100		
111	53.4	21.5	64.5
148	70.1	31.9	95.5



#93
 1, 2, 4-Tri chl orobenzene
 Concen: 0.687 ug/l
 RT: 13.597 min Scan# 2052
 Delta R.T. 0.012 min
 Lab File: VX043998.D
 Acq: 25 Nov 2024 19:40

Tgt Ion	Resp	Lower	Upper
180	100		
182	88.6	48.0	144.2
145	23.8	16.8	50.4

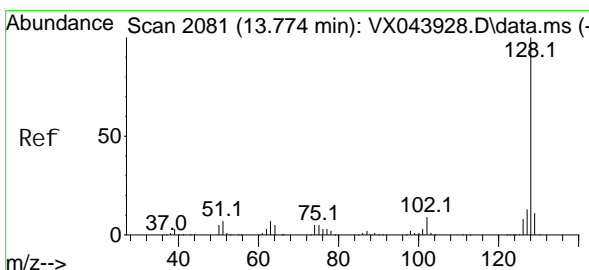
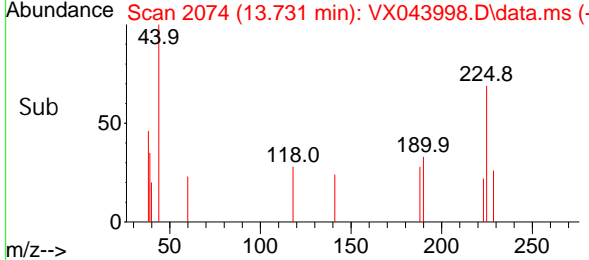
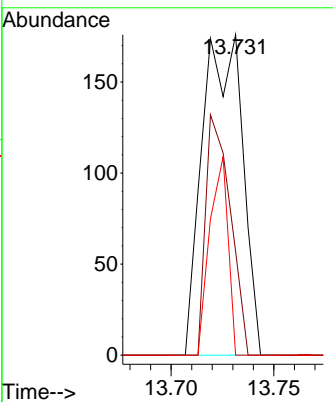
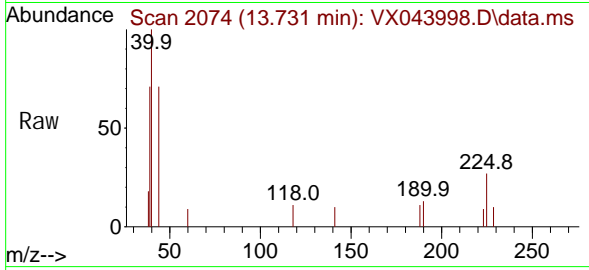




#94
 Hexachl orobutadi ene
 Concen: 0.423 ug/l
 RT: 13.731 min Scan# 2074
 Delta R.T. 0.006 min
 Lab File: VX043998.D
 Acq: 25 Nov 2024 19:40

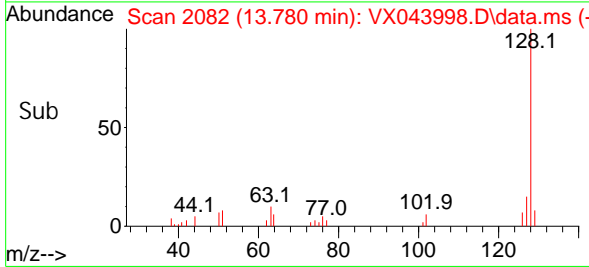
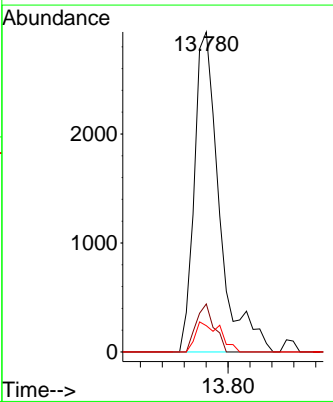
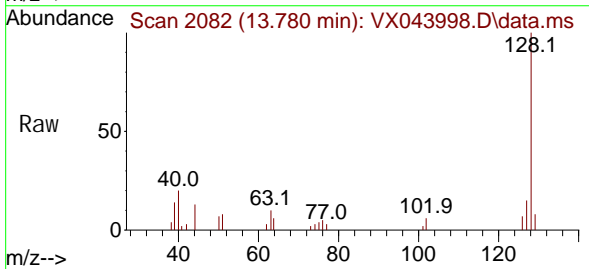
Instrument : MSVOA_X
 ClientSampleId : PB165160TB

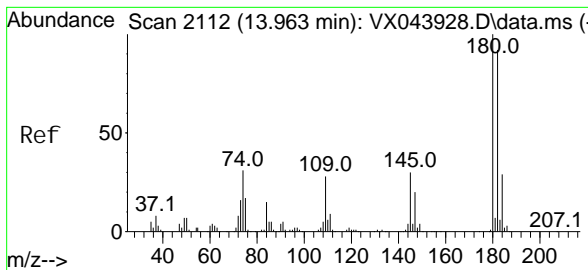
Tgt Ion	Resp	Lower	Upper
225	100		
223	46.2	32.9	98.6
227	28.2	31.6	94.8



#95
 Naphthal ene
 Concen: 0.912 ug/l
 RT: 13.780 min Scan# 2082
 Delta R.T. 0.006 min
 Lab File: VX043998.D
 Acq: 25 Nov 2024 19:40

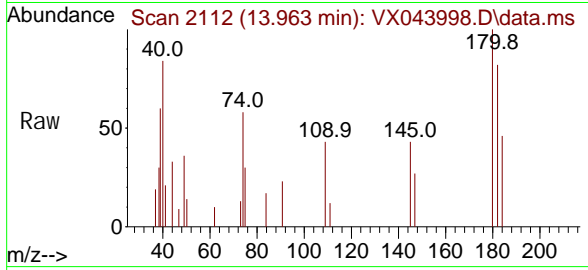
Tgt Ion	Resp	Lower	Upper
128	100		
127	10.8	10.2	15.2
129	9.3	8.6	12.8





#96
 1, 2, 3-Tri chlorobenzene
 Concen: 0.650 ug/l
 RT: 13.963 min Scan# 21
 Delta R.T. -0.000 min
 Lab File: VX043998.D
 Acq: 25 Nov 2024 19: 40

Instrument :
 MSVOA_X
 ClientSampleId :
 PB165160TB



Tgt Ion: 180 Resp: 936

Ion	Ratio	Lower	Upper
180	100		
182	86.2	45.6	136.8
145	38.5	16.4	49.4

