

Data Path : Z:\VOASRV\HPCHEM1\MSVOA X\DATA\VX112618\
 Data File : VX006171.D
 Acq On : 26 Nov 2018 13:25
 Operator : JC/MD
 Sample : J6051-03
 Misc : 5.0mL/MSVOA X/WATER
 ALS Vial : 8 Sample Multiplier: 1

Instrument :
 MSVOA_X
 ClientSampled :
 TRIP-BLANK

Quant Time: Nov 27 02:26:52 2018
 Quant Method : Z:\VOASRV\HPCHEM1\MSVOA_X\METHOD\82X112018W.M
 Quant Title : SW846 8260
 QLast Update : Wed Nov 21 08:15:54 2018
 Response via : Initial Calibration

Internal Standards	R.T.	QIon	Response	Conc	Units	Dev(Min)
1) Pentafluorobenzene	5.67	168	318170	50.00	ug/l	0.00
34) 1,4-Difluorobenzene	6.86	114	472761	50.00	ug/l	0.00
63) Chlorobenzene-d5	10.12	117	433436	50.00	ug/l	0.00
72) 1,4-Dichlorobenzene-d4	12.08	152	209641	50.00	ug/l	0.00

System Monitoring Compounds

33) 1,2-Dichloroethane-d4	6.07	65	197883	53.67	ug/l	0.00
Spiked Amount	50.000		Recovery	=	107.34%	
35) Dibromofluoromethane	5.50	113	159379	52.52	ug/l	0.00
Spiked Amount	50.000		Recovery	=	105.04%	
50) Toluene-d8	8.71	98	575459	49.72	ug/l	0.00
Spiked Amount	50.000		Recovery	=	99.44%	
62) 4-Bromofluorobenzene	11.14	95	193875	44.64	ug/l	0.00
Spiked Amount	50.000		Recovery	=	89.28%	

Target Compounds

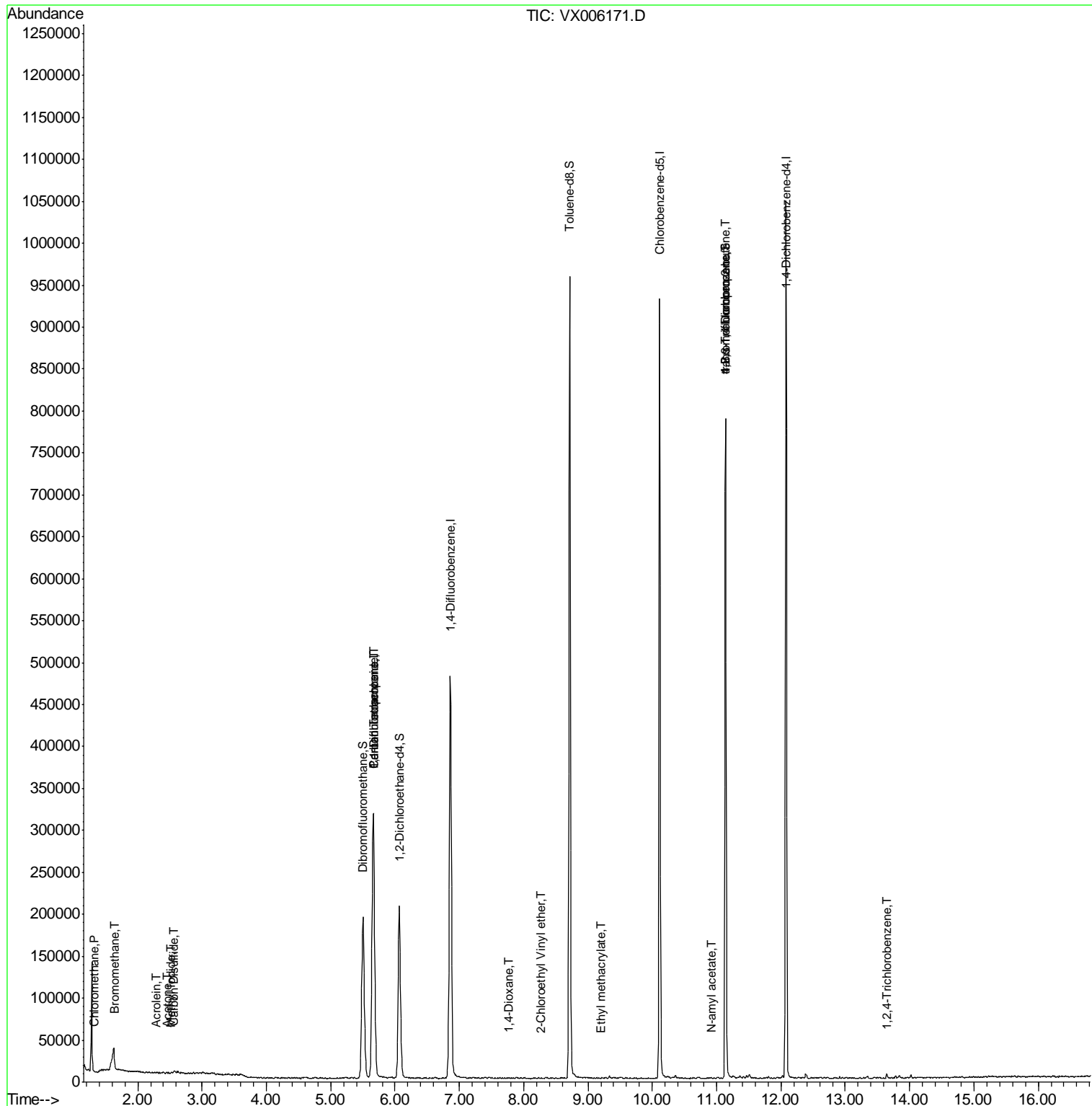
					Qvalue
3) Chloromethane	1.32	50	1187	0.397 ug/l	95
5) Bromomethane	1.64	94	2233	4.600 ug/l #	79
6) Chloroethane	1.61	64	2596	Below Cal #	69
10) Methyl Iodide	2.51	142	1171	0.396 ug/l #	88
13) Acrolein	2.29	56	305	0.650 ug/l #	48
16) Acetone	2.45	43	1290	0.789 ug/l #	62
17) Carbon Disulfide	2.57	76	3631	0.585 ug/l	100
20) Methylene Chloride	2.86	84	757	Below Cal #	81
36) 1,1-Dichloropropene	5.66	75	23120	5.376 ug/l #	50
38) Carbon Tetrachloride	5.66	117	28726	7.106 ug/l #	16
49) 1,4-Dioxane	7.77	88	61	0.634 ug/l #	1
56) Ethyl methacrylate	9.20	69	180	2.897 ug/l #	1
58) 2-Chloroethyl Vinyl ether	8.28	63	138	6.767 ug/l	94
74) N-amyl acetate	10.92	43	458	2.260 ug/l #	69
76) 1,2,3-Trichloropropane	11.14	75	95817	22.200 ug/l #	38
81) trans-1,4-Dichloro-2-buten	11.14	75	95817	75.086 ug/l #	7
93) 1,2,4-Trichlorobenzene	13.65	180	1018	0.216 ug/l	95

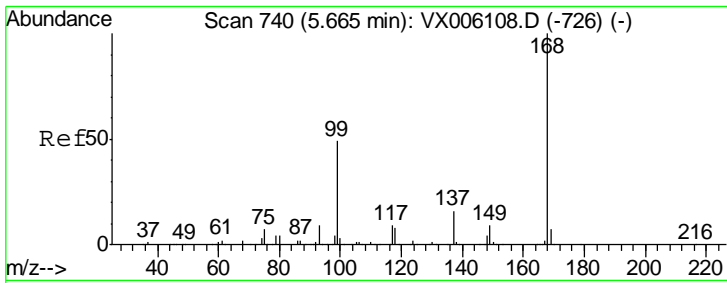
(#) = qualifier out of range (m) = manual integration (+) = signals summed

Data Path : Z:\VOASRV\HPCHEM1\MSVOA X\DATA\VX112618\
 Data File : VX006171.D
 Acq On : 26 Nov 2018 13:25
 Operator : JC/MD
 Sample : J6051-03
 Misc : 5.0mL/MSVOA X/WATER
 ALS Vial : 8 Sample Multiplier: 1

Instrument :
 MSVOA_X
 Client Sampled :
 TRIP-BLANK

Quant Time: Nov 27 02:26:52 2018
 Quant Method : Z:\VOASRV\HPCHEM1\MSVOA_X\METHOD\82X112018W.M
 Quant Title : SW846 8260
 QLast Update : Wed Nov 21 08:15:54 2018
 Response via : Initial Calibration

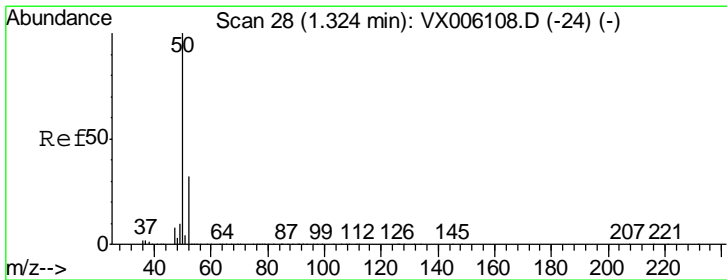
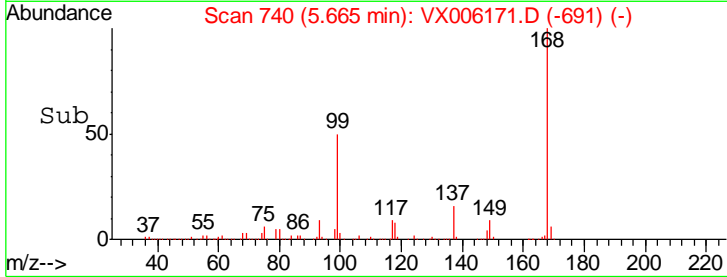
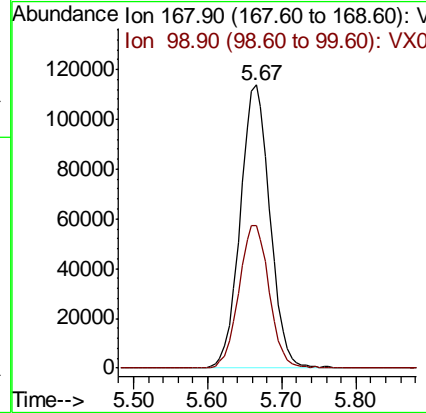
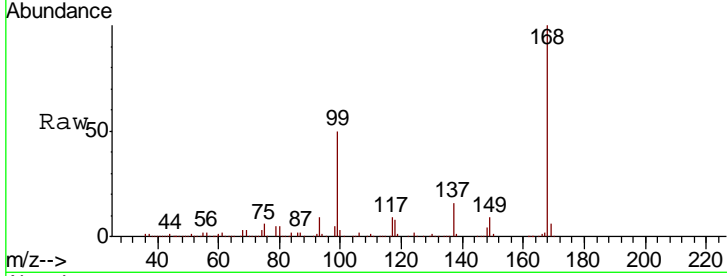




#1
 Pentafluorobenzene
 Concen: 50.000 ug/l
 RT: 5.67 min Scan# 740
 Delta R.T. 0.00 min
 Lab File: VX006171.D
 Acq: 26 Nov 2018 13:25

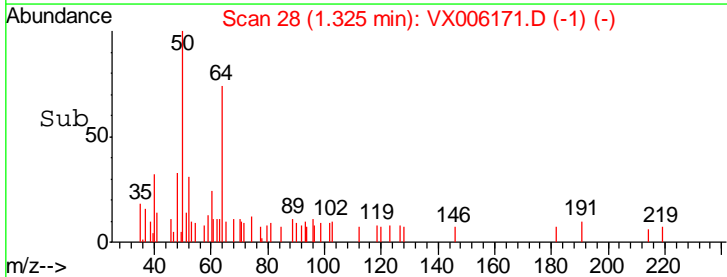
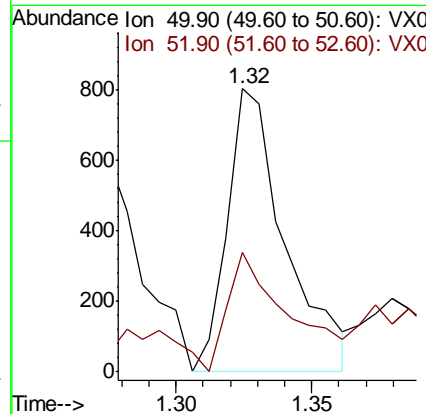
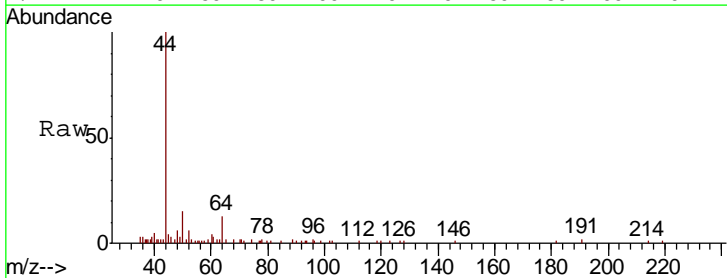
Instrument :
 MSVOA_X
 ClientSampled :
 TRIP-BLANK

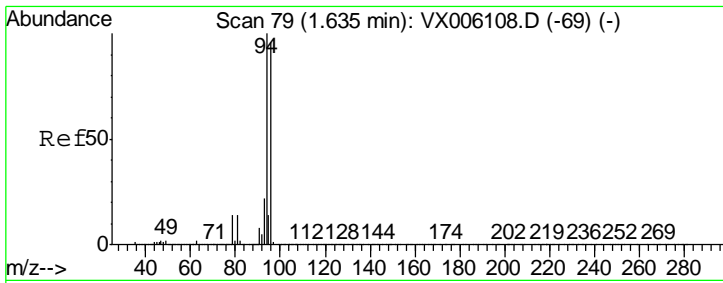
Tgt Ion	Resp	Lower	Upper
168	100		
99	50.4	39.2	58.8



#3
 Chloromethane
 Concen: 0.397 ug/l
 RT: 1.32 min Scan# 28
 Delta R.T. 0.00 min
 Lab File: VX006171.D
 Acq: 26 Nov 2018 13:25

Tgt Ion	Resp	Lower	Upper
50	100		
52	35.0	25.6	38.4

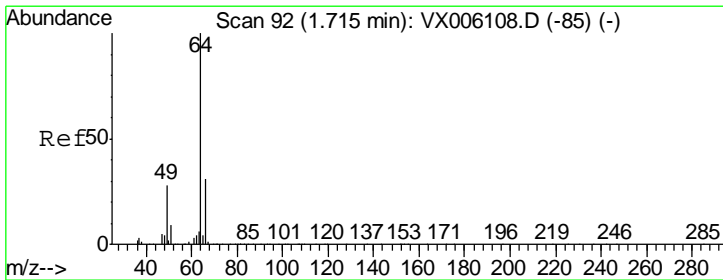
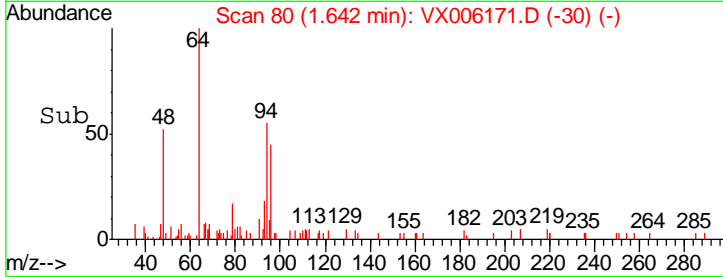
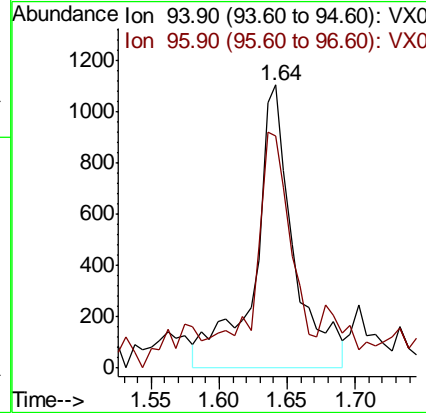
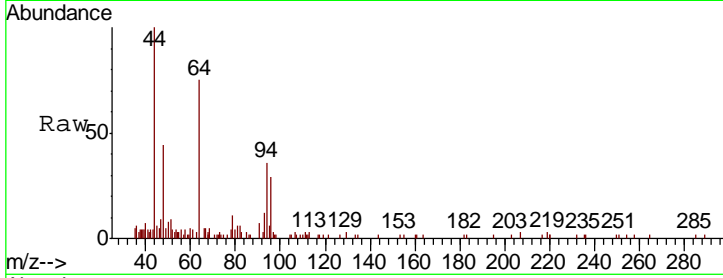




#5
 Bromomethane
 Concen: 4.600 ug/l
 RT: 1.64 min Scan# 80
 Delta R.T. 0.01 min
 Lab File: VX006171.D
 Acq: 26 Nov 2018 13:25

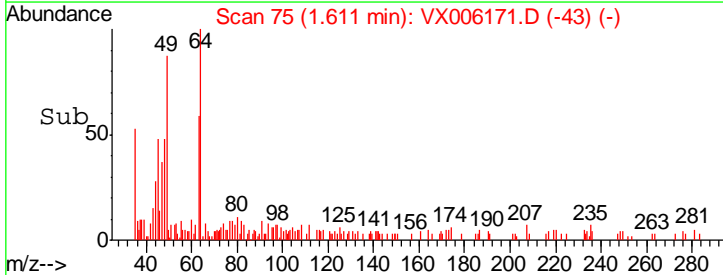
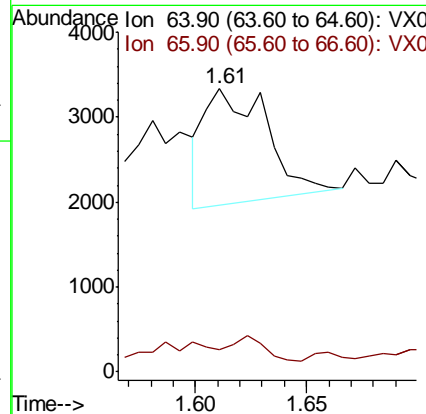
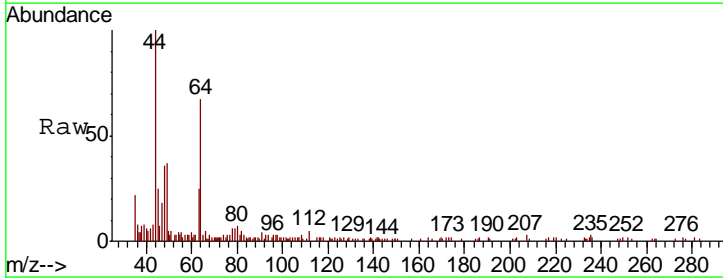
Instrument :
 MSVOA_X
 ClientSampled :
 TRIP-BLANK

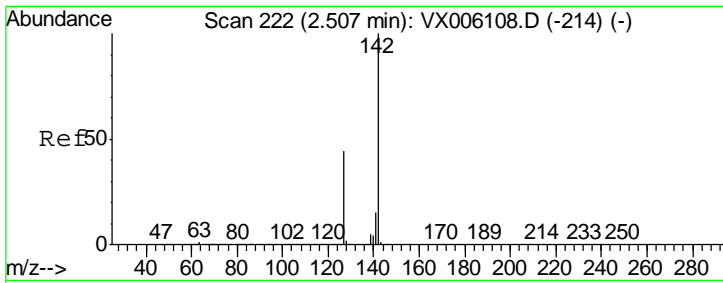
Tgt Ion: 94 Resp: 2233
 Ion Ratio Lower Upper
 94 100
 96 75.8 76.7 115.1#



#6
 Chloroethane
 Concen: Below Cal
 RT: 1.61 min Scan# 75
 Delta R.T. -0.10 min
 Lab File: VX006171.D
 Acq: 26 Nov 2018 13:25

Tgt Ion: 64 Resp: 2596
 Ion Ratio Lower Upper
 64 100
 66 14.0 25.1 37.7#

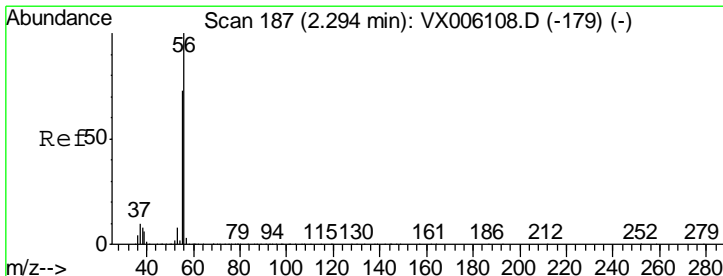
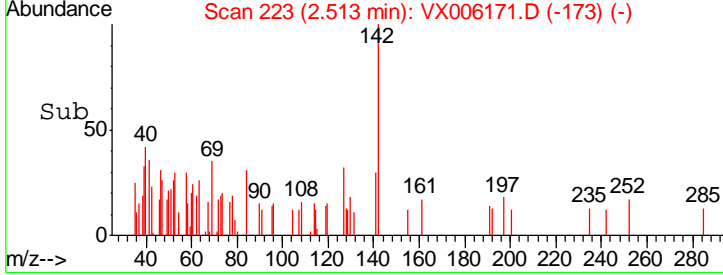
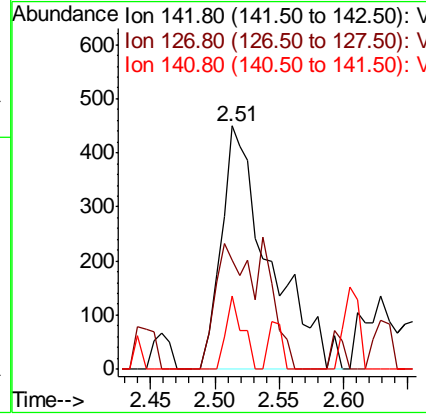
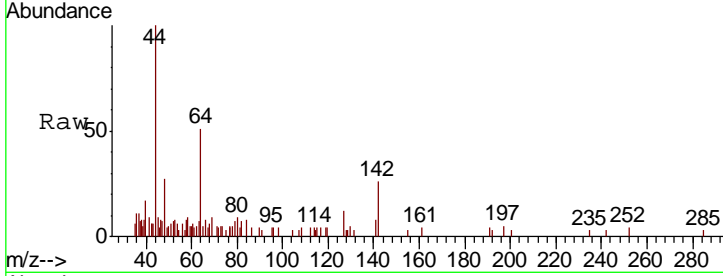




#10
Methyl Iodide
Concen: 0.396 ug/l
RT: 2.51 min Scan# 223
Delta R.T. 0.01 min
Lab File: VX006171.D
Acq: 26 Nov 2018 13:25

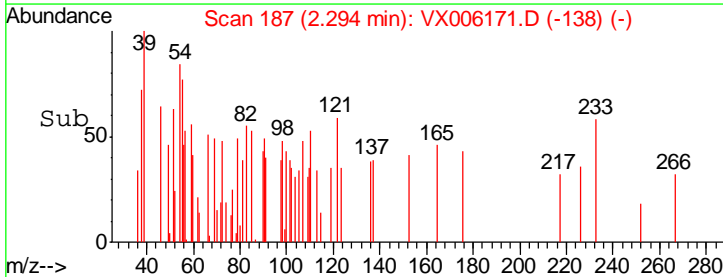
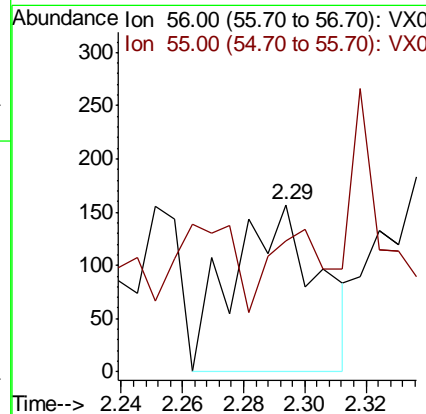
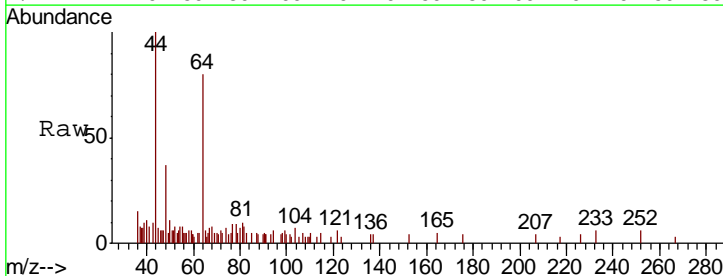
Instrument :
MSVOA_X
ClientSampled :
TRIP-BLANK

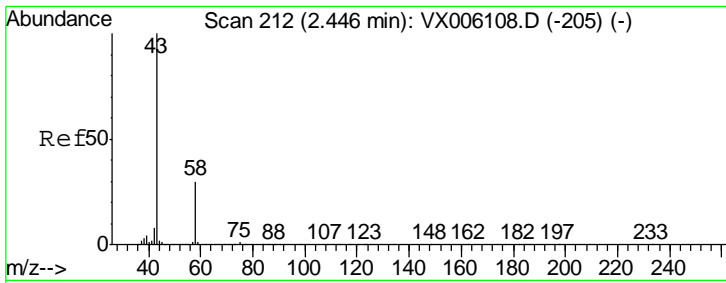
Tgt Ion	Resp	Lower	Upper
142	1171		
127	36.4	36.0	54.0
141	10.6	11.7	17.5#



#13
Acrolein
Concen: 0.650 ug/l
RT: 2.29 min Scan# 187
Delta R.T. 0.00 min
Lab File: VX006171.D
Acq: 26 Nov 2018 13:25

Tgt Ion	Resp	Lower	Upper
56	305		
55	28.5	57.8	86.6#

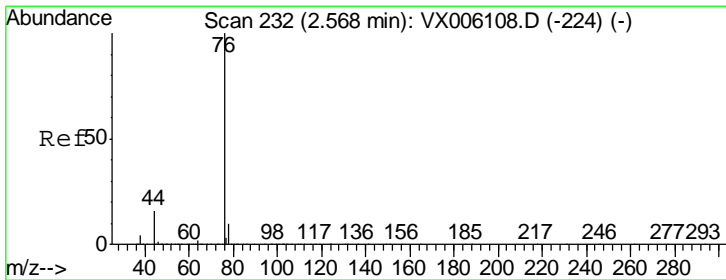
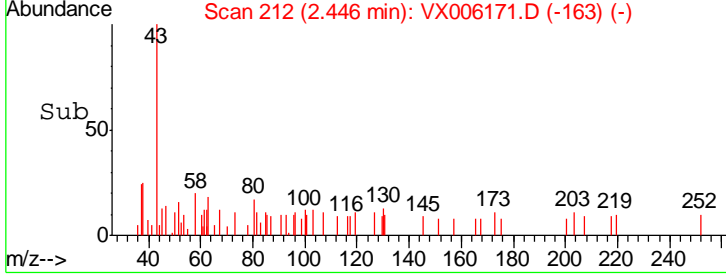
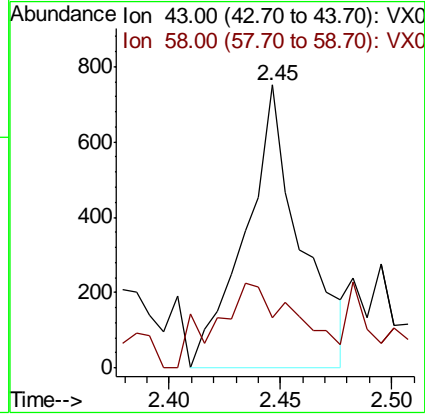
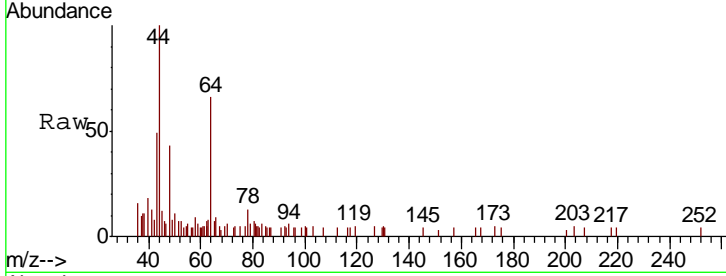




#16
 Acetone
 Concen: 0.789 ug/l
 RT: 2.45 min Scan# 212
 Delta R.T. 0.00 min
 Lab File: VX006171.D
 Acq: 26 Nov 2018 13:25

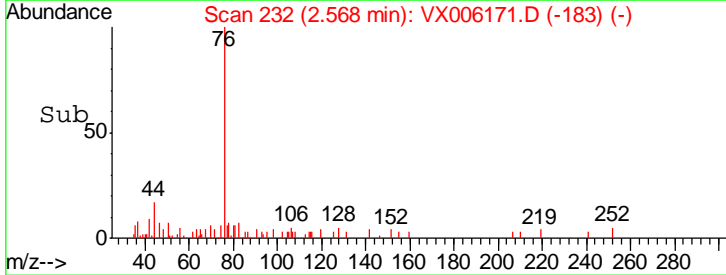
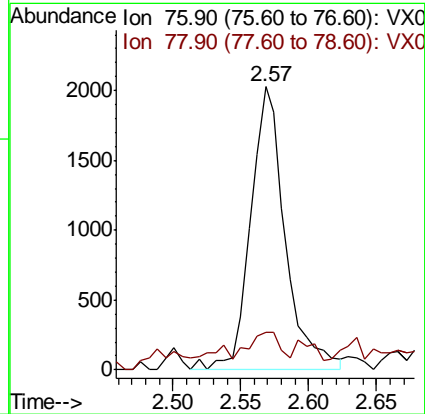
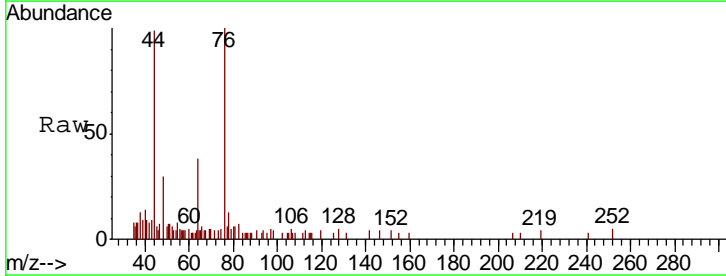
Instrument :
 MSVOA_X
 ClientSampled :
 TRIP-BLANK

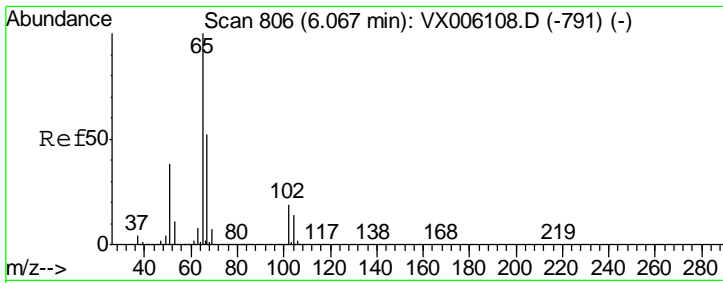
Tgt Ion: 43 Resp: 1290
 Ion Ratio Lower Upper
 43 100
 58 9.3 23.8 35.8#



#17
 Carbon Disulfide
 Concen: 0.585 ug/l
 RT: 2.57 min Scan# 232
 Delta R.T. 0.00 min
 Lab File: VX006171.D
 Acq: 26 Nov 2018 13:25

Tgt Ion: 76 Resp: 3631
 Ion Ratio Lower Upper
 76 100
 78 9.4 7.7 11.5

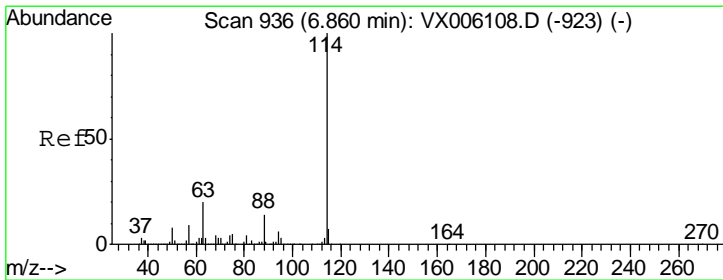
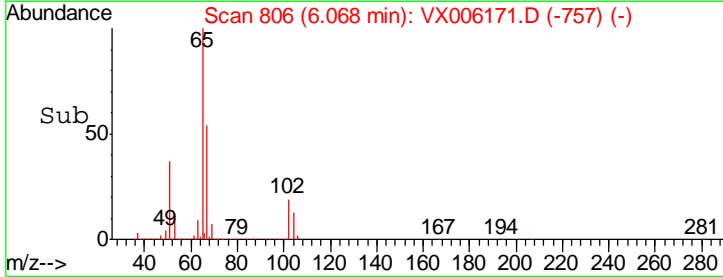
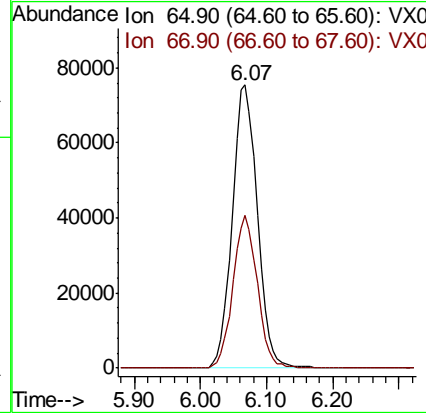
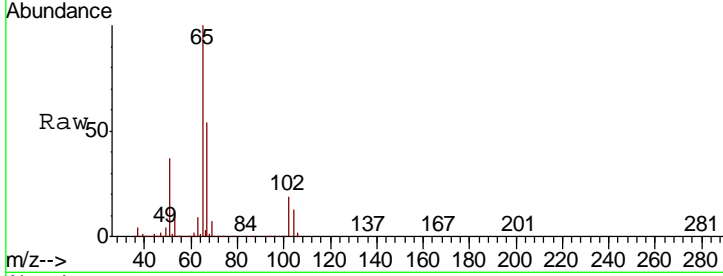




#33
 1,2-Dichloroethane-d4
 Concen: 53.674 ug/l
 RT: 6.07 min Scan# 806
 Delta R.T. 0.00 min
 Lab File: VX006171.D
 Acq: 26 Nov 2018 13:25

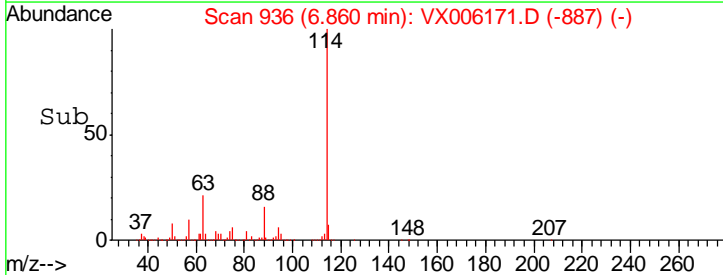
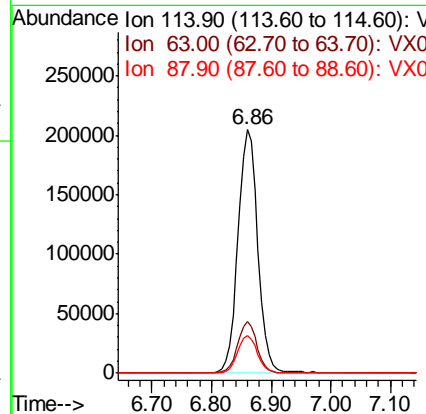
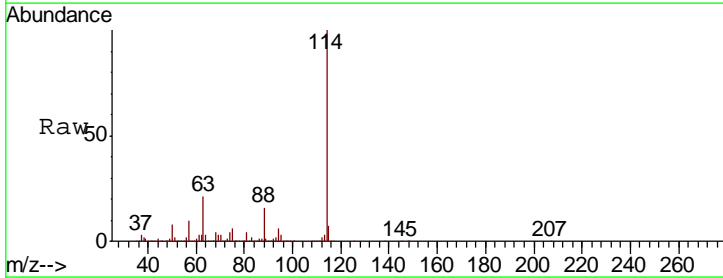
Instrument :
 MSVOA_X
 ClientSampled :
 TRIP-BLANK

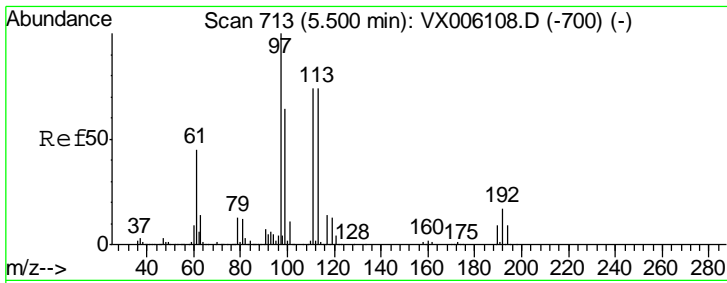
Tgt Ion	Resp	Lower	Upper
65	197883		
67	52.4	0.0	105.8



#34
 1,4-Difluorobenzene
 Concen: 50.000 ug/l
 RT: 6.86 min Scan# 936
 Delta R.T. 0.00 min
 Lab File: VX006171.D
 Acq: 26 Nov 2018 13:25

Tgt Ion	Resp	Lower	Upper
114	472761		
63	21.1	0.0	39.2
88	15.5	0.0	28.6

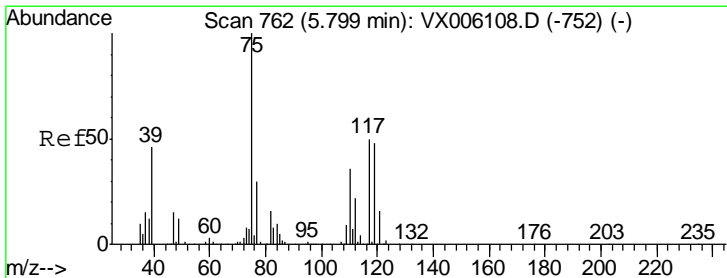
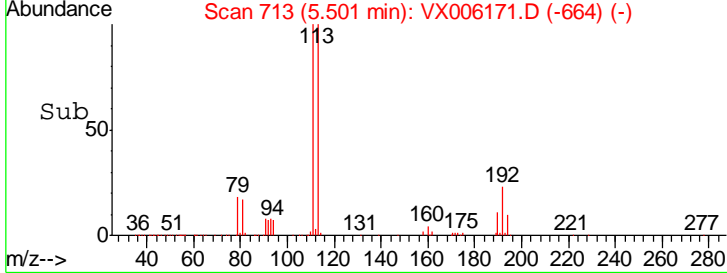
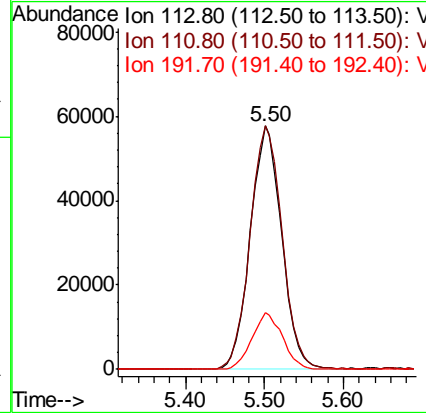
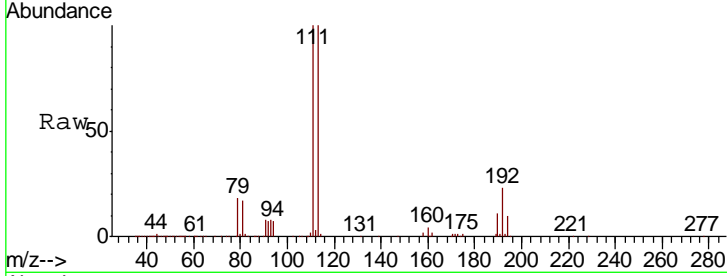




#35
 Dibromofluoromethane
 Concen: 52.518 ug/l
 RT: 5.50 min Scan# 713
 Delta R.T. 0.00 min
 Lab File: VX006171.D
 Acq: 26 Nov 2018 13:25

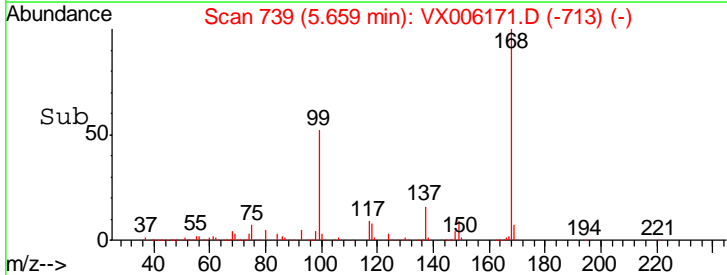
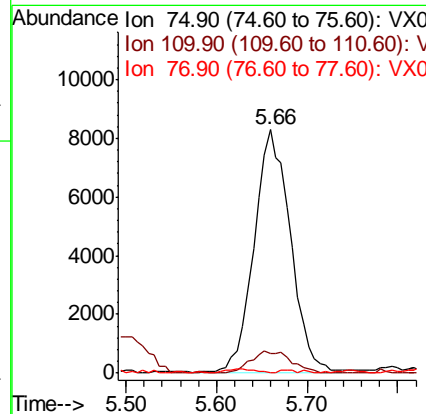
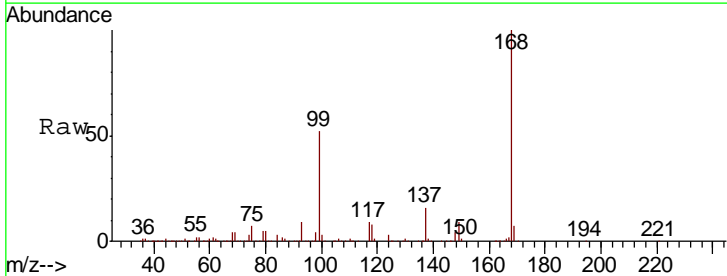
Instrument :
 MSVOA_X
 ClientSampled :
 TRIP-BLANK

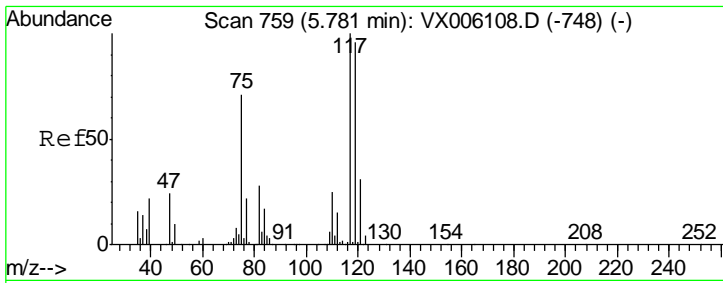
Tgt Ion	Resp	Lower	Upper
113	159379		
113	100		
111	102.4	81.5	122.3
192	23.0	18.6	28.0



#36
 1,1-Dichloropropene
 Concen: 5.376 ug/l
 RT: 5.66 min Scan# 739
 Delta R.T. -0.14 min
 Lab File: VX006171.D
 Acq: 26 Nov 2018 13:25

Tgt Ion	Resp	Lower	Upper
75	23120		
75	100		
110	9.8	17.8	53.3#
77	0.0	24.5	36.7#

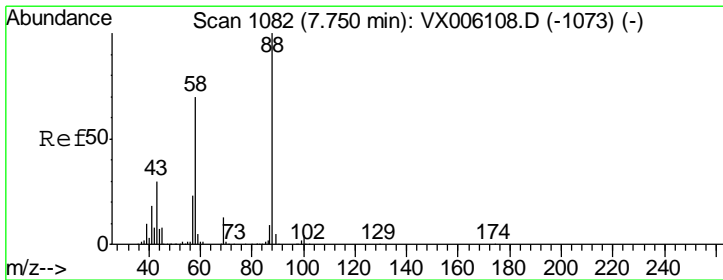
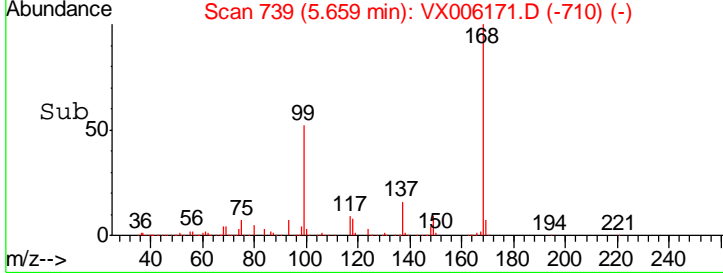
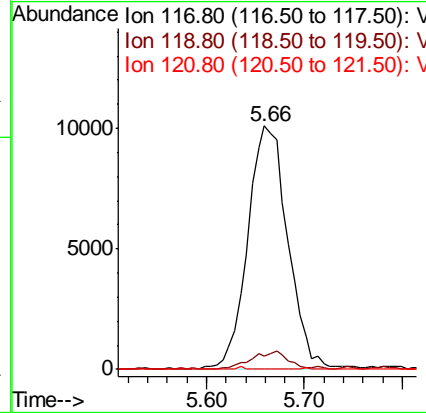
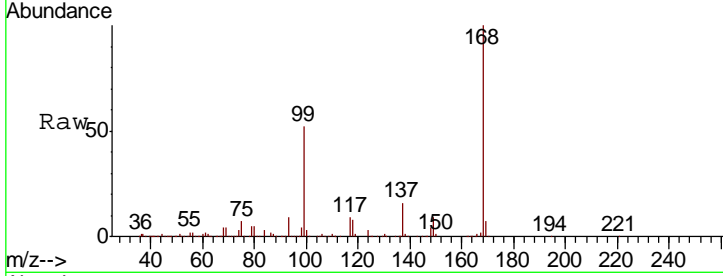




#38
 Carbon Tetrachloride
 Concen: 7.106 ug/l
 RT: 5.66 min Scan# 739
 Delta R.T. -0.12 min
 Lab File: VX006171.D
 Acq: 26 Nov 2018 13:25

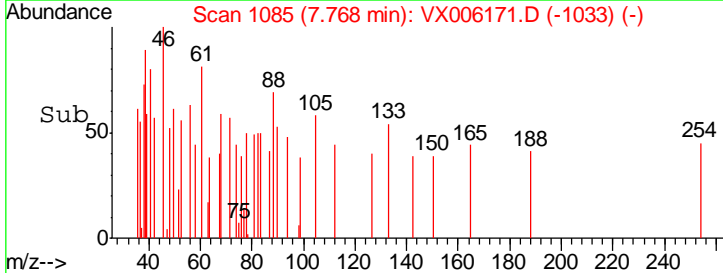
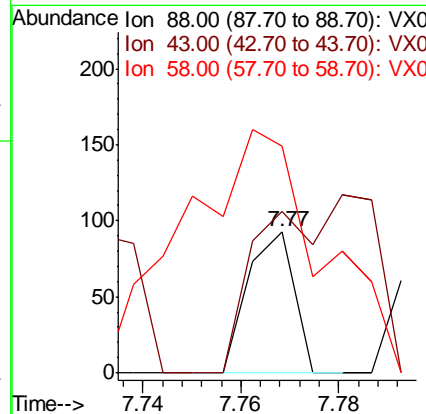
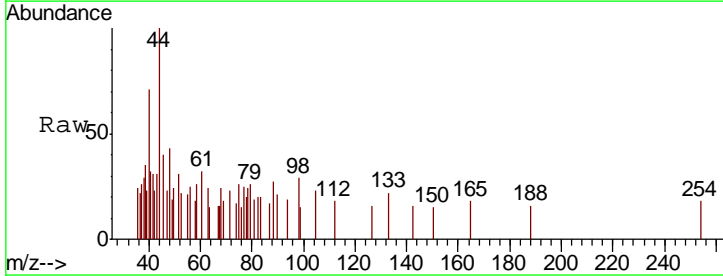
Instrument :
 MSVOA_X
 ClientSampled :
 TRIP-BLANK

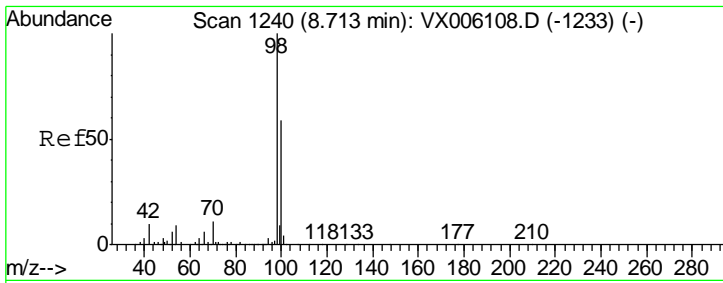
Tgt Ion	Resp	Lower	Upper
117	28726		
119	5.1	76.3	114.5#
121	0.0	24.7	37.1#



#49
 1,4-Dioxane
 Concen: 0.634 ug/l
 RT: 7.77 min Scan# 1085
 Delta R.T. 0.02 min
 Lab File: VX006171.D
 Acq: 26 Nov 2018 13:25

Tgt Ion	Resp	Lower	Upper
88	61		
43	0.0	26.7	40.1#
58	519.7	58.5	87.7#

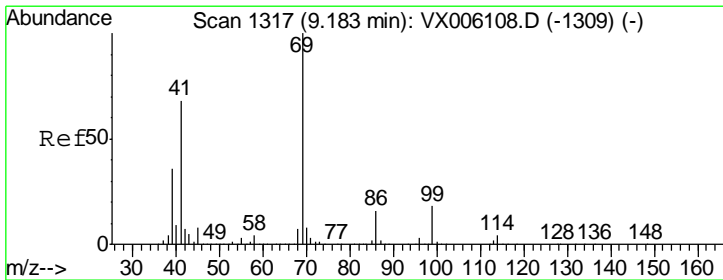
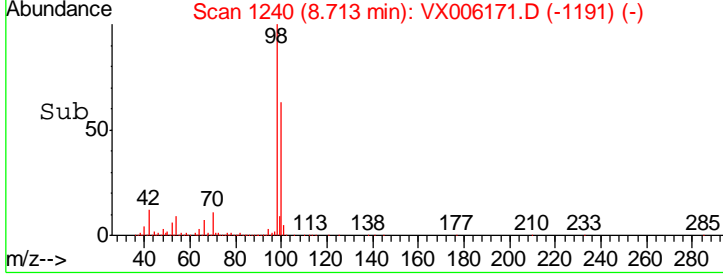
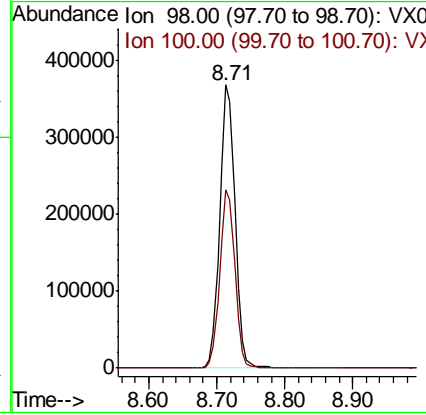
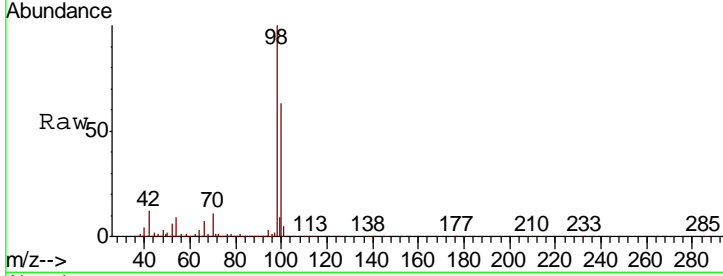




#50
 Toluene-d8
 Concen: 49.716 ug/l
 RT: 8.71 min Scan# 1240
 Delta R.T. 0.00 min
 Lab File: VX006171.D
 Acq: 26 Nov 2018 13:25

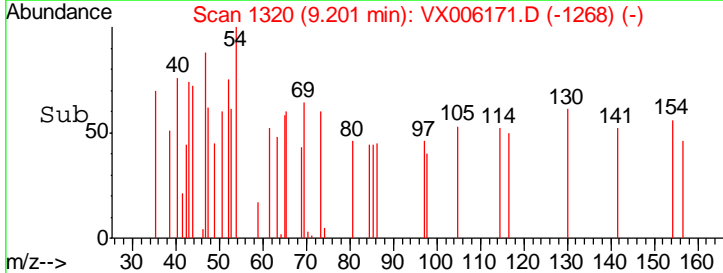
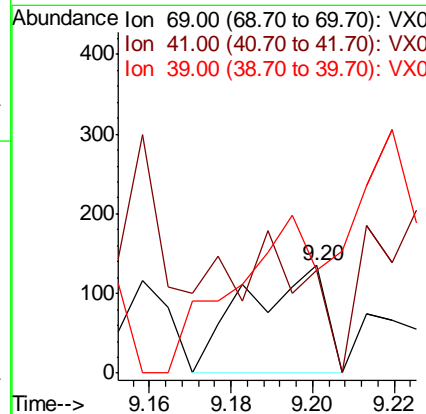
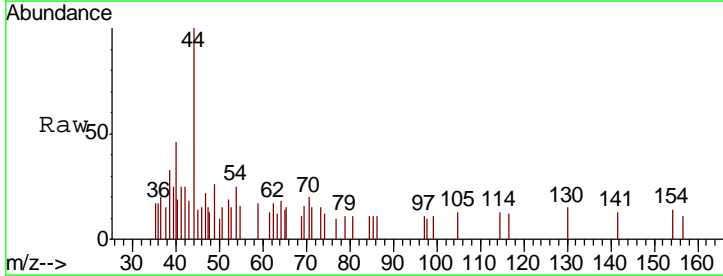
Instrument :
 MSVOA_X
 ClientSampled :
 TRIP-BLANK

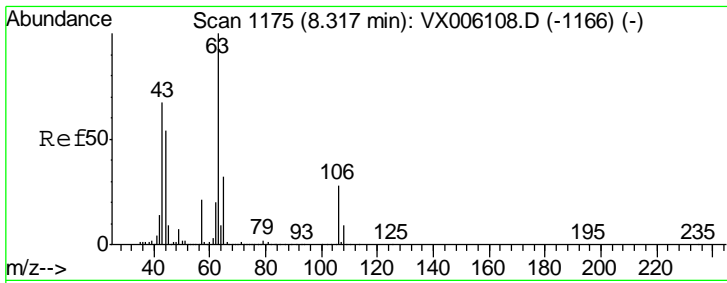
Tgt Ion	Resp	Lower	Upper
98	100		
100	62.4	51.0	76.4



#56
 Ethyl methacrylate
 Concen: 2.897 ug/l
 RT: 9.20 min Scan# 1320
 Delta R.T. 0.02 min
 Lab File: VX006171.D
 Acq: 26 Nov 2018 13:25

Tgt Ion	Resp	Lower	Upper
69	100		
41	0.0	56.2	84.4#
39	156.7	29.4	44.0#

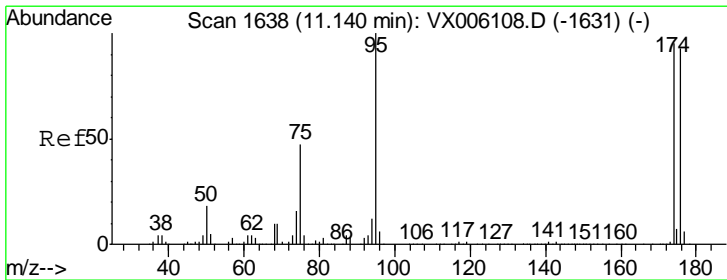
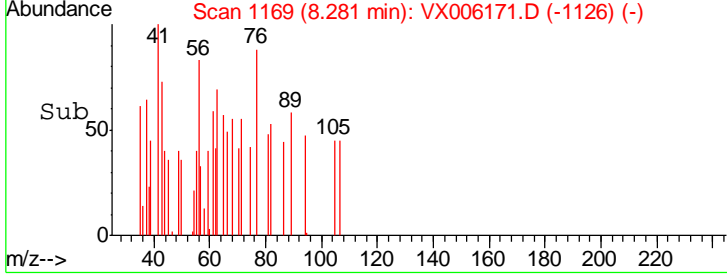
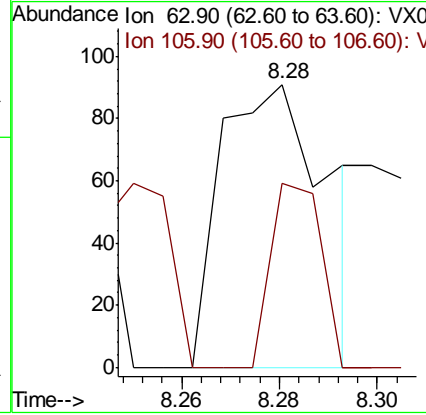
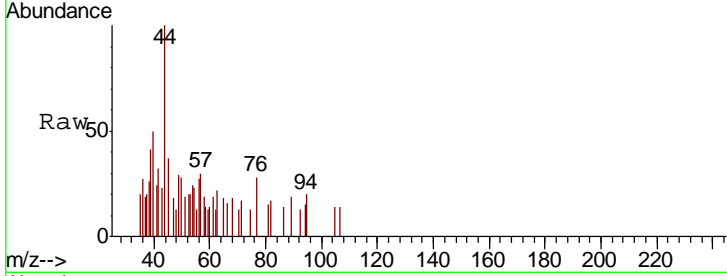




#58
 2-Chloroethyl Vinyl ether
 Concen: 6.767 ug/l
 RT: 8.28 min Scan# 1169
 Delta R.T. -0.04 min
 Lab File: VX006171.D
 Acq: 26 Nov 2018 13:25

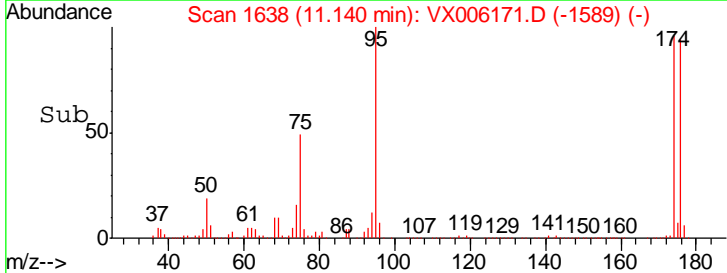
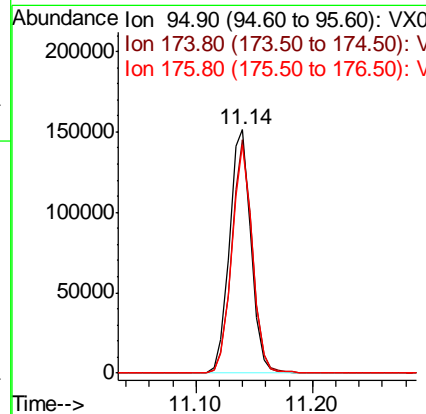
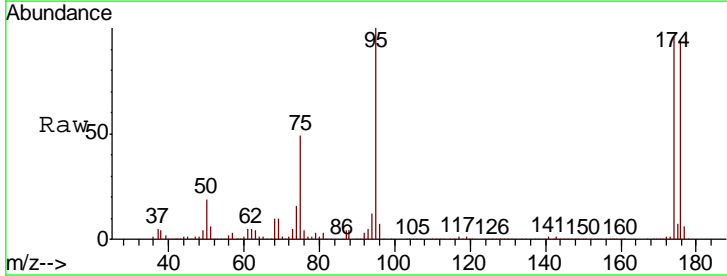
Instrument : MSVOA_X
 ClientSampled : TRIP-BLANK

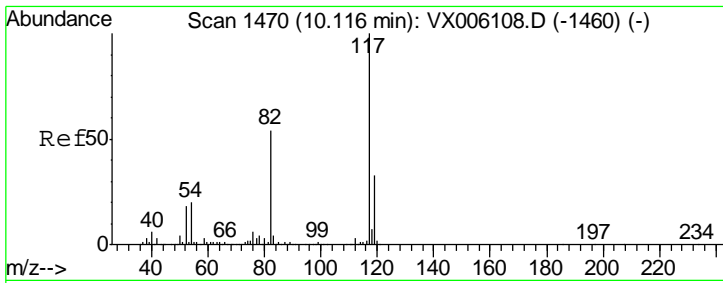
Tgt Ion	Resp	Lower	Upper
63	138		
63	100		
106	30.4	21.7	32.5



#62
 4-Bromofluorobenzene
 Concen: 44.641 ug/l
 RT: 11.14 min Scan# 1638
 Delta R.T. 0.00 min
 Lab File: VX006171.D
 Acq: 26 Nov 2018 13:25

Tgt Ion	Resp	Lower	Upper
95	193875		
95	100		
174	91.9	0.0	184.4
176	89.7	0.0	179.0

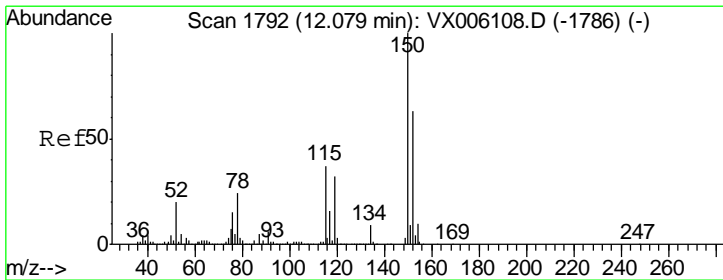
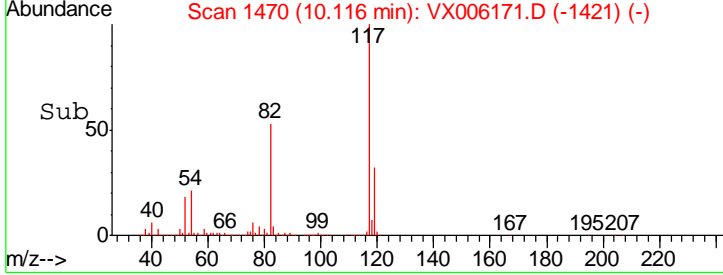
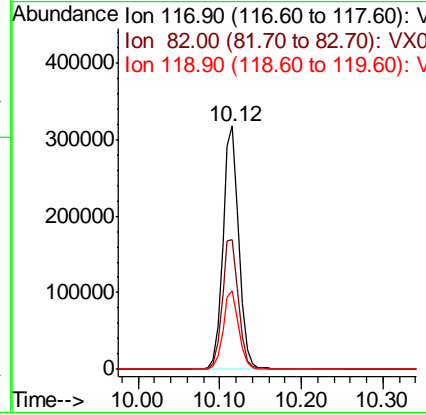
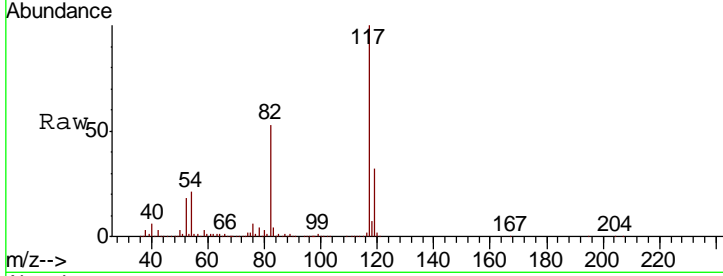




#63
 Chlorobenzene-d5
 Concen: 50.000 ug/l
 RT: 10.12 min Scan# 1470
 Delta R.T. 0.00 min
 Lab File: VX006171.D
 Acq: 26 Nov 2018 13:25

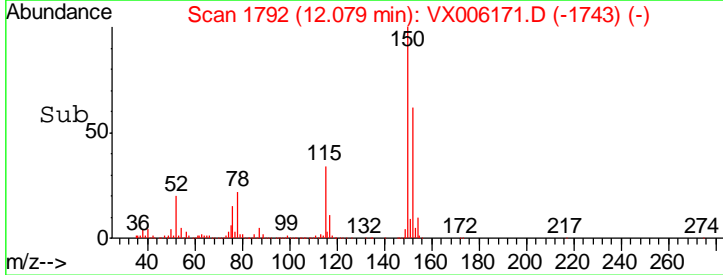
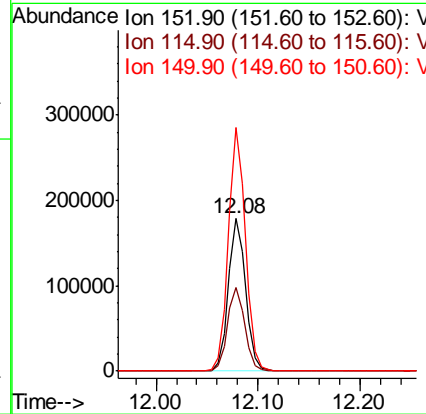
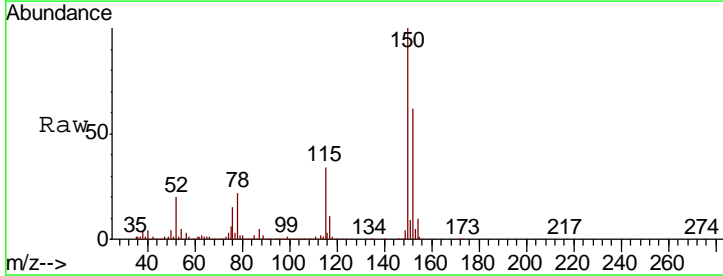
Instrument :
 MSVOA_X
 ClientSampled :
 TRIP-BLANK

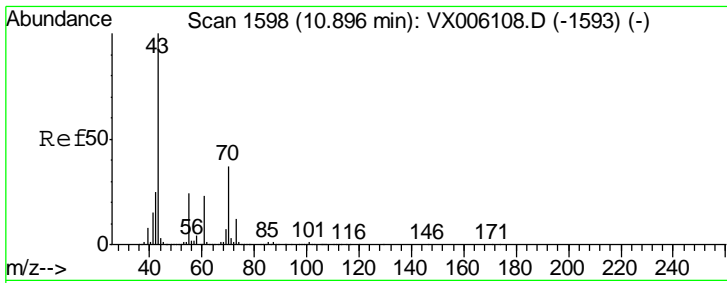
Tgt Ion	Resp	Lower	Upper
117	433436		
82	53.2	43.0	64.4
119	32.1	26.1	39.1



#72
 1,4-Dichlorobenzene-d4
 Concen: 50.000 ug/l
 RT: 12.08 min Scan# 1792
 Delta R.T. 0.00 min
 Lab File: VX006171.D
 Acq: 26 Nov 2018 13:25

Tgt Ion	Resp	Lower	Upper
152	209641		
115	55.0	39.0	116.9
150	158.3	0.0	346.6

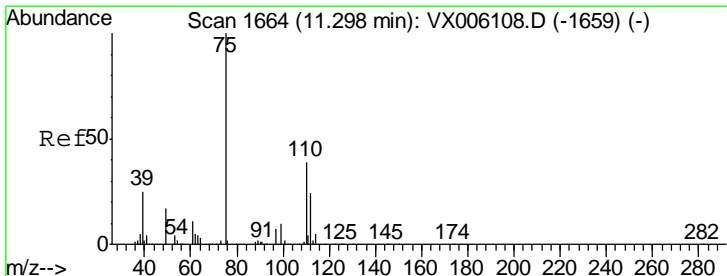
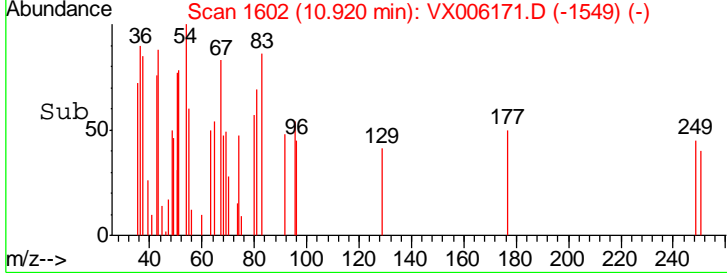
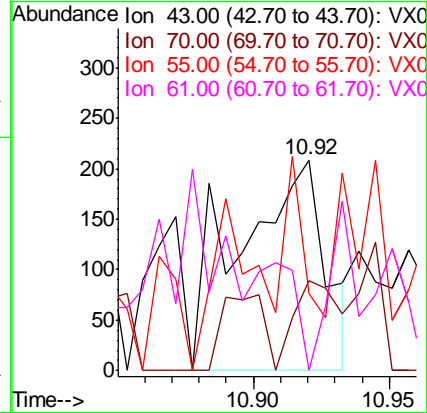
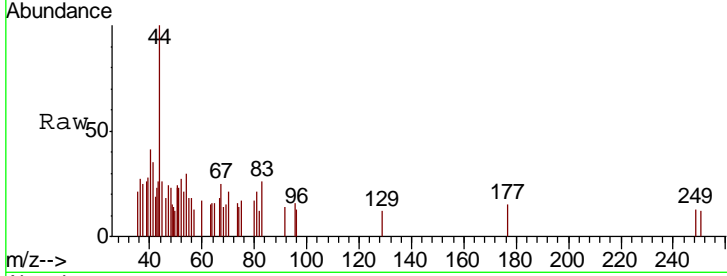




#74
 N-amyl acetate
 Concen: 2.260 ug/l
 RT: 10.92 min Scan# 1602
 Delta R.T. 0.03 min
 Lab File: VX006171.D
 Acq: 26 Nov 2018 13:25

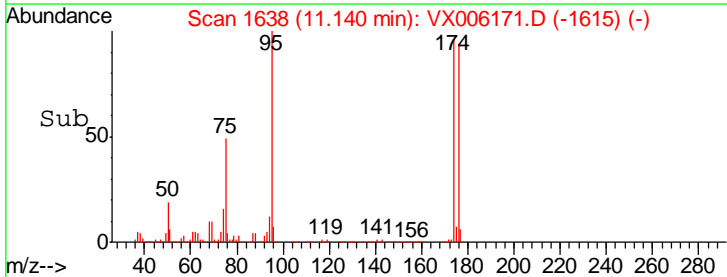
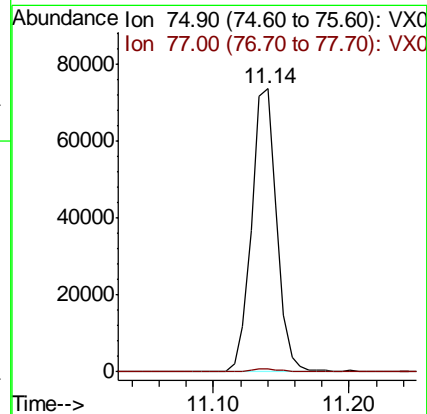
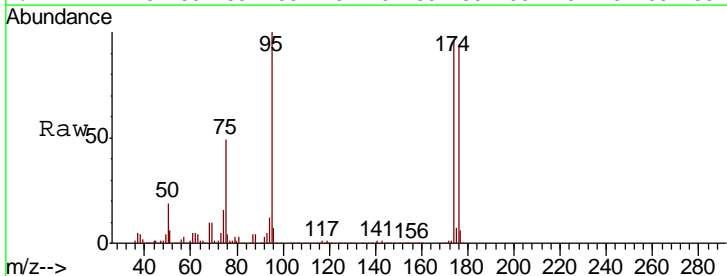
Instrument :
 MSVOA_X
 ClientSampled :
 TRIP-BLANK

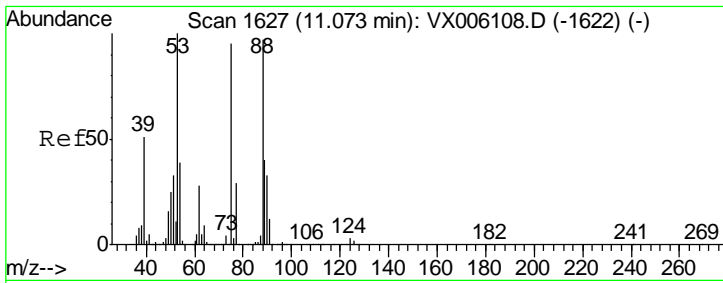
Tgt Ion	Resp	Lower	Upper
43	100		
70	22.3	31.8	47.6#
55	14.6	19.5	29.3#
61	0.0	18.6	27.8#



#76
 1,2,3-Trichloropropane
 Concen: 22.200 ug/l
 RT: 11.14 min Scan# 1638
 Delta R.T. -0.16 min
 Lab File: VX006171.D
 Acq: 26 Nov 2018 13:25

Tgt Ion	Resp	Lower	Upper
75	100		
77	1.4	19.6	58.7#

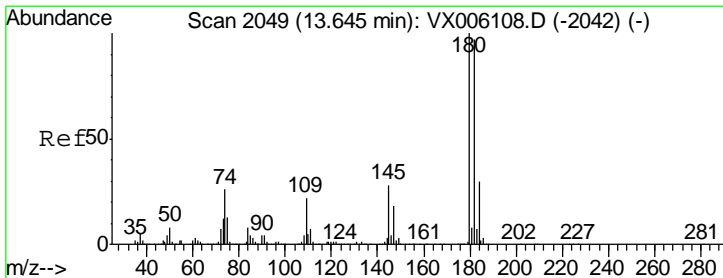
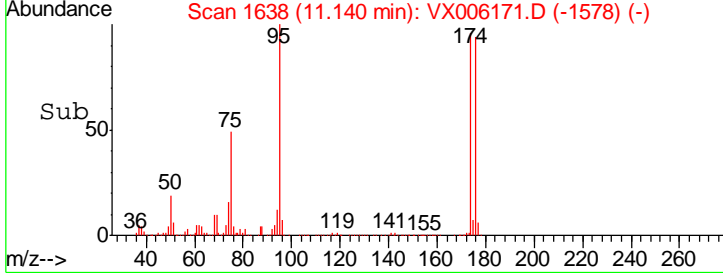
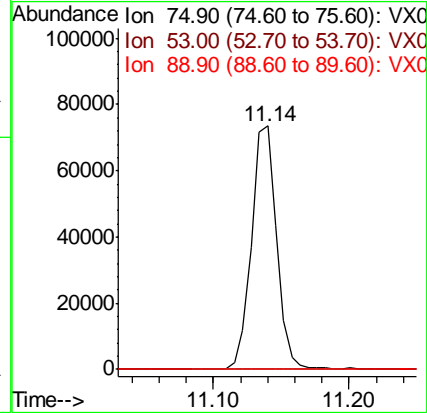
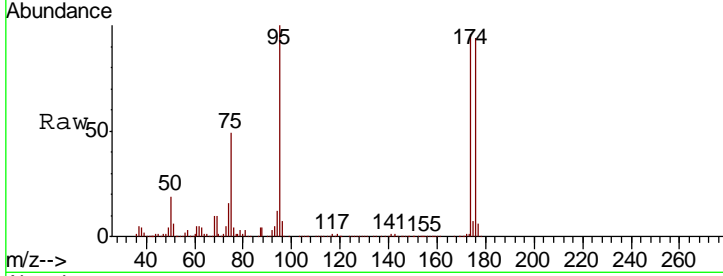




#81
 trans-1,4-Dichloro-2-butene
 Concen: 75.086 ug/l
 RT: 11.14 min Scan# 1638
 Delta R.T. 0.07 min
 Lab File: VX006171.D
 Acq: 26 Nov 2018 13:25

Instrument : MSVOA_X
 ClientSampled : TRIP-BLANK

Tgt Ion	Resp	Lower	Upper
75	100		
53	0.4	85.3	127.9#
89	0.0	37.2	55.8#



#93
 1,2,4-Trichlorobenzene
 Concen: 0.216 ug/l
 RT: 13.65 min Scan# 2049
 Delta R.T. 0.00 min
 Lab File: VX006171.D
 Acq: 26 Nov 2018 13:25

Tgt Ion	Resp	Lower	Upper
180	100		
182	101.5	48.2	144.6
145	31.5	14.1	42.2

