

Data Path : Z:\VOASRV\HPCHEM1\MSVOA X\DATA\VX112618\
 Data File : VX006202.D
 Acq On : 27 Nov 2018 04:04
 Operator : JC/MD
 Sample : PB115023ZHE#05
 Misc : 5.0mL/MSVOA X/WATER
 ALS Vial : 41 Sample Multiplier: 1

Instrument :
 MSVOA_X
 ClientSampled :
 PB115023ZHE#05

Quant Time: Nov 28 13:00:03 2018
 Quant Method : Z:\VOASRV\HPCHEM1\MSVOA_X\METHOD\82X112018W.M
 Quant Title : SW846 8260
 QLast Update : Wed Nov 21 08:15:54 2018
 Response via : Initial Calibration

Internal Standards	R.T.	QIon	Response	Conc	Units	Dev(Min)
1) Pentafluorobenzene	5.67	168	266060	50.00	ug/l	0.00
34) 1,4-Difluorobenzene	6.86	114	401797	50.00	ug/l	0.00
63) Chlorobenzene-d5	10.12	117	394053	50.00	ug/l	0.00
72) 1,4-Dichlorobenzene-d4	12.08	152	182329	50.00	ug/l	0.00

System Monitoring Compounds

33) 1,2-Dichloroethane-d4	6.07	65	173149	56.16	ug/l	0.00
Spiked Amount	50.000		Recovery	=	112.32%	
35) Dibromofluoromethane	5.50	113	137718	53.40	ug/l	0.00
Spiked Amount	50.000		Recovery	=	106.80%	
50) Toluene-d8	8.71	98	516045	52.46	ug/l	0.00
Spiked Amount	50.000		Recovery	=	104.92%	
62) 4-Bromofluorobenzene	11.14	95	167221	45.30	ug/l	0.00
Spiked Amount	50.000		Recovery	=	90.60%	

Target Compounds

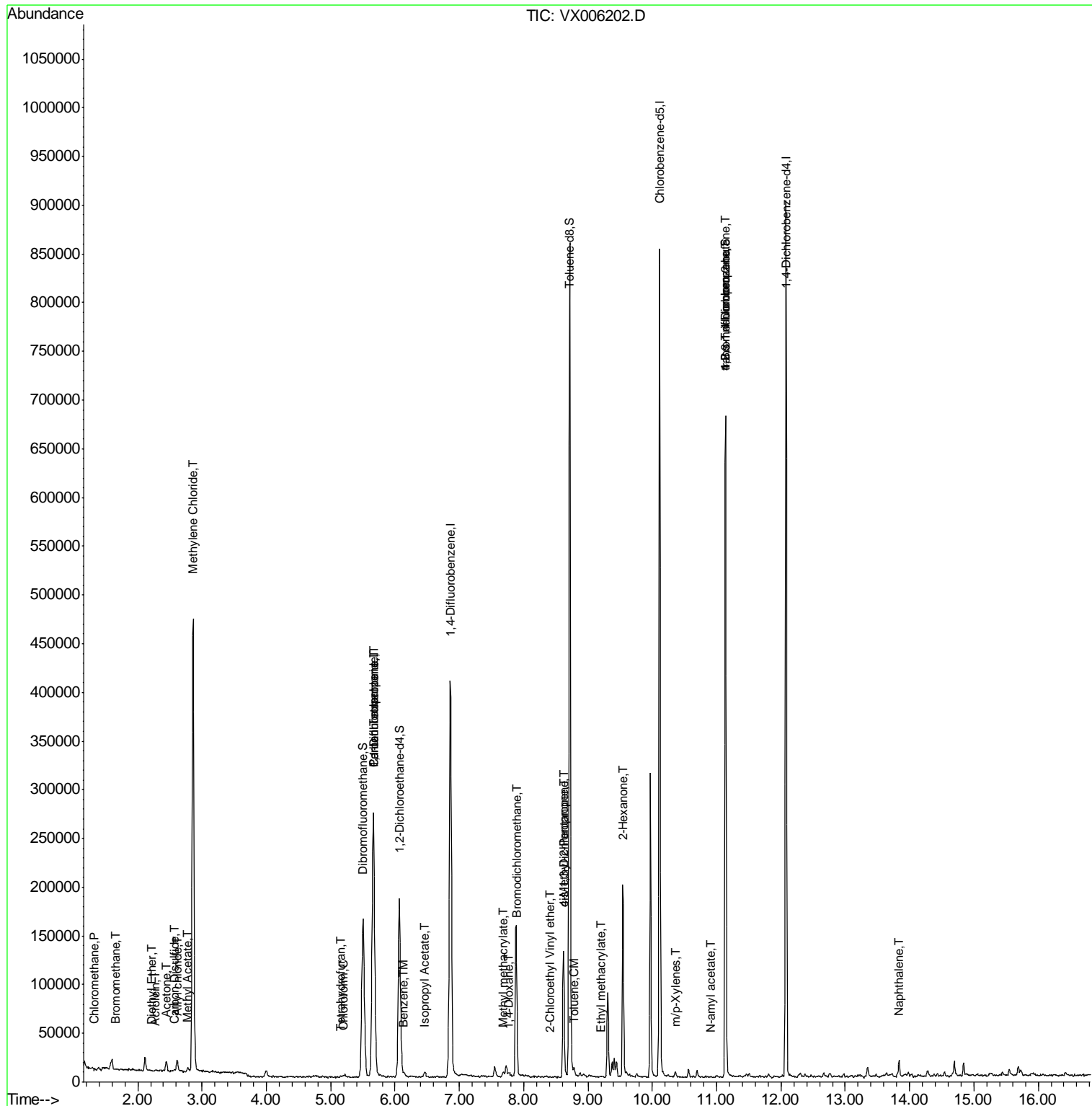
						Qvalue
3) Chloromethane	1.33	50	977	0.391	ug/l #	81
5) Bromomethane	1.65	94	324	3.869	ug/l #	23
6) Chloroethane	1.72	64	137	Below Cal	#	1
8) Diethyl Ether	2.21	74	370	0.263	ug/l #	1
13) Acrolein	2.28	56	186	0.474	ug/l	84
14) Allyl chloride	2.62	41	1226	0.312	ug/l #	52
16) Acetone	2.45	43	11899	8.698	ug/l	99
17) Carbon Disulfide	2.57	76	2185	0.421	ug/l	97
18) Methyl Acetate	2.78	43	4848	1.382	ug/l #	88
20) Methylene Chloride	2.86	84	212247	102.870	ug/l	95
29) Tetrahydrofuran	5.15	42	855	0.540	ug/l #	84
30) Chloroform	5.21	83	2724	0.567	ug/l #	79
36) 1,1-Dichloropropene	5.67	75	19373	5.300	ug/l #	51
38) Carbon Tetrachloride	5.67	117	24434	7.112	ug/l #	17
40) Benzene	6.14	78	3441	0.320	ug/l	94
43) Isopropyl Acetate	6.46	43	6727	0.990	ug/l #	86
47) Bromodichloromethane	7.90	83	816	0.226	ug/l #	91
48) Methyl methacrylate	7.68	41	6395	1.857	ug/l #	27
49) 1,4-Dioxane	7.76	88	51	0.624	ug/l #	22
51) 4-Methyl-2-Pentanone	8.62	43	45698	9.386	ug/l #	53
52) Toluene	8.78	92	1967	0.295	ug/l	91
54) cis-1,3-Dichloropropene	8.62	75	19034	4.571	ug/l #	69
56) Ethyl methacrylate	9.20	69	82	2.883	ug/l #	23
58) 2-Chloroethyl Vinyl ether	8.42	63	79	6.752	ug/l	96
59) 2-Hexanone	9.54	43	23779	6.154	ug/l #	56
68) m/p-Xylenes	10.36	106	1384	0.269	ug/l	93
74) N-amyl acetate	10.91	43	185	2.224	ug/l #	2
76) 1,2,3-Trichloropropane	11.14	75	86673	23.090	ug/l #	39
81) trans-1,4-Dichloro-2-buten	11.14	75	86673	78.094	ug/l #	8
95) Naphthalene	13.83	128	10383	0.860	ug/l #	89

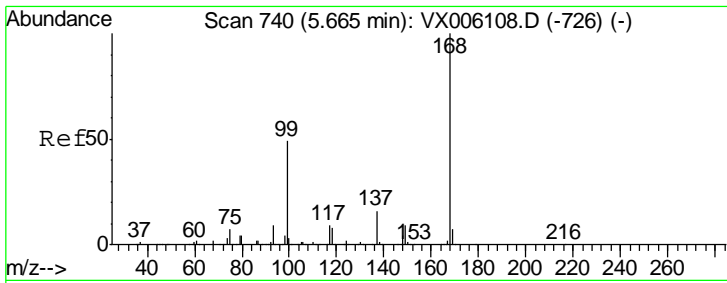
(#) = qualifier out of range (m) = manual integration (+) = signals summed

Data Path : Z:\VOASRV\HPCHEM1\MSVOA X\DATA\VX112618\
 Data File : VX006202.D
 Acq On : 27 Nov 2018 04:04
 Operator : JC/MD
 Sample : PB115023ZHE#05
 Misc : 5.0mL/MSVOA X/WATER
 ALS Vial : 41 Sample Multiplier: 1

Instrument :
 MSVOA_X
 Client Sampled :
 PB115023ZHE#05

Quant Time: Nov 28 13:00:03 2018
 Quant Method : Z:\VOASRV\HPCHEM1\MSVOA_X\METHOD\82X112018W.M
 Quant Title : SW846 8260
 QLast Update : Wed Nov 21 08:15:54 2018
 Response via : Initial Calibration

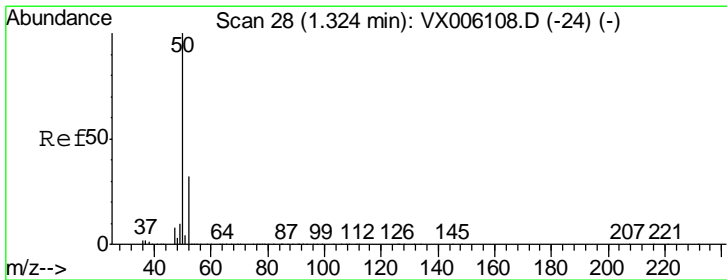
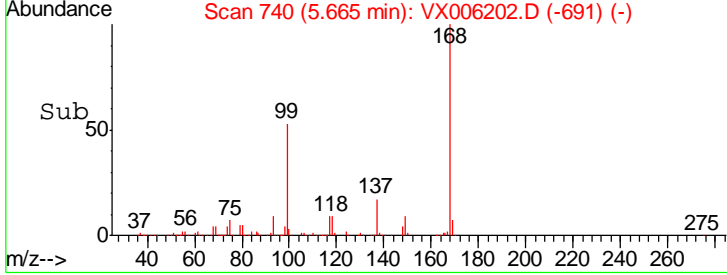
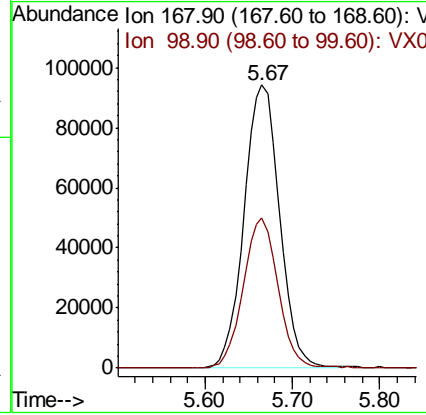
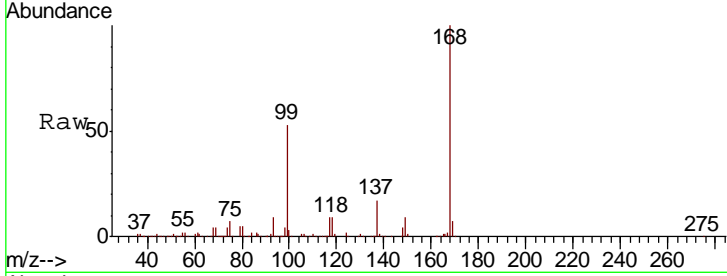




#1
 Pentafluorobenzene
 Concen: 50.000 ug/l
 RT: 5.67 min Scan# 740
 Delta R.T. 0.00 min
 Lab File: VX006202.D
 Acq: 27 Nov 2018 04:04

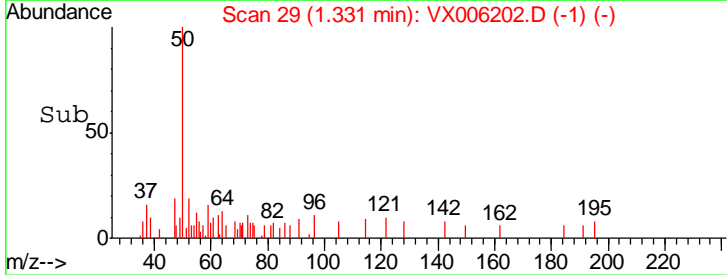
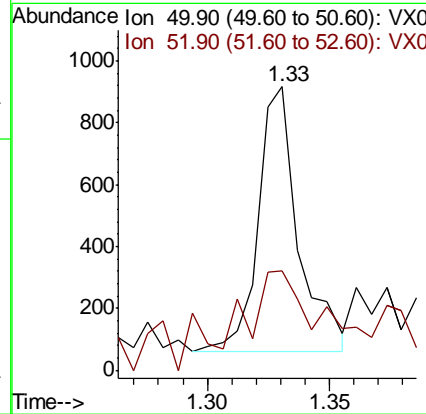
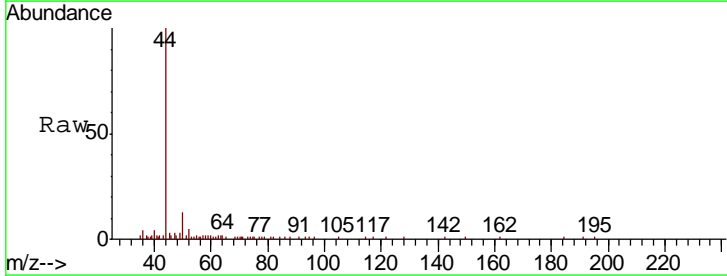
Instrument : MSVOA_X
 ClientSampled : PB115023ZHE#05

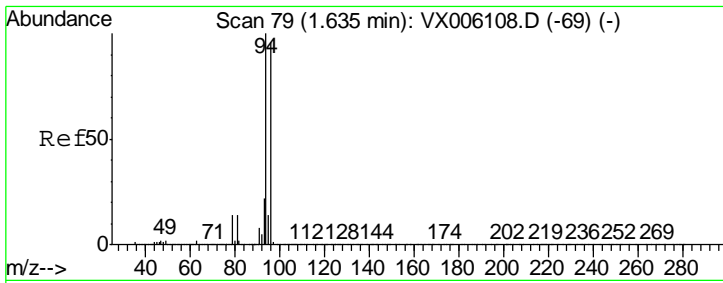
Tgt Ion	Resp	Lower	Upper
168	100		
99	53.2	39.2	58.8



#3
 Chloromethane
 Concen: 0.391 ug/l
 RT: 1.33 min Scan# 29
 Delta R.T. 0.01 min
 Lab File: VX006202.D
 Acq: 27 Nov 2018 04:04

Tgt Ion	Resp	Lower	Upper
50	100		
52	21.5	25.6	38.4

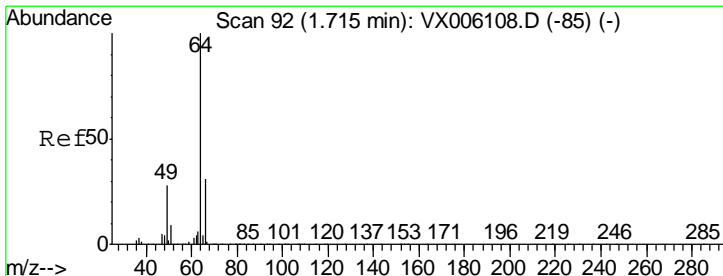
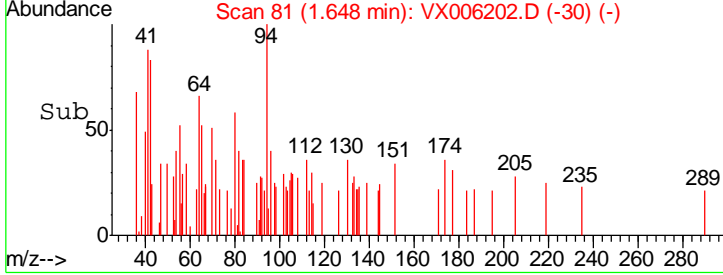
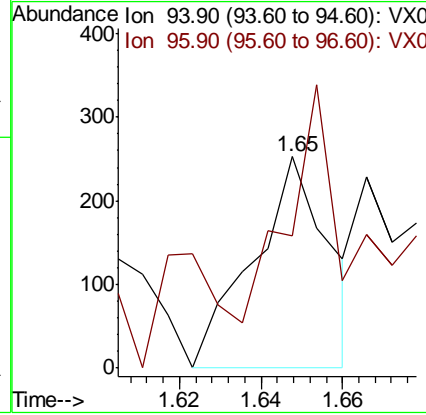
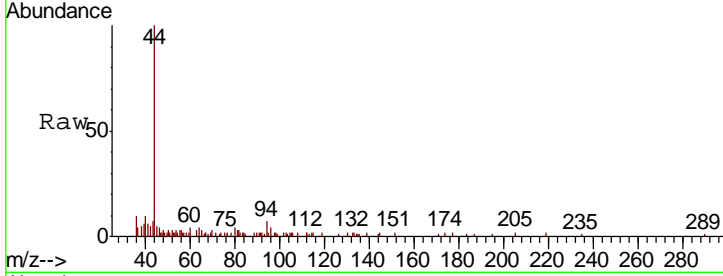




#5
 Bromomethane
 Concen: 3.869 ug/l
 RT: 1.65 min Scan# 81
 Delta R.T. 0.01 min
 Lab File: VX006202.D
 Acq: 27 Nov 2018 04:04

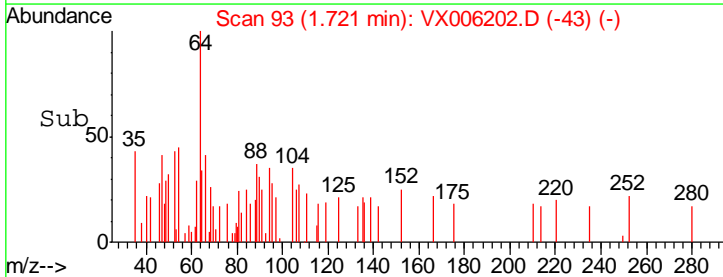
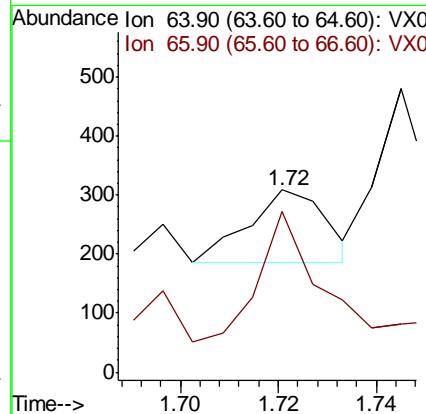
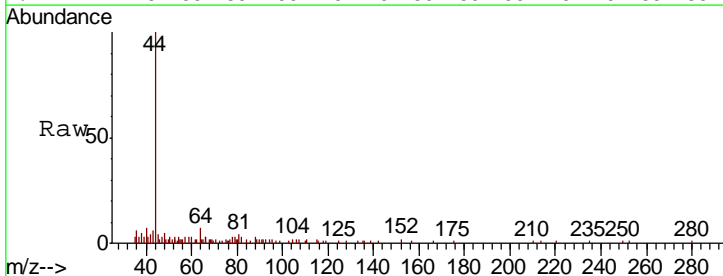
Instrument : MSVOA_X
 ClientSampleId : PB115023ZHE#05

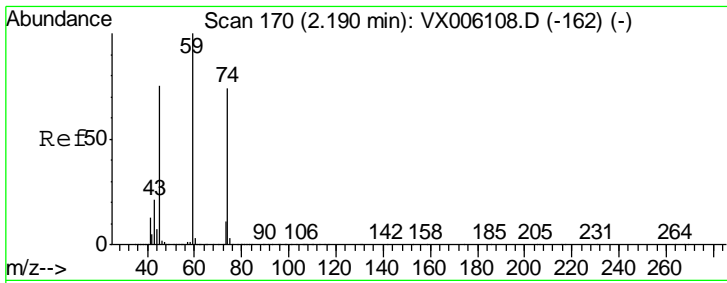
Tgt Ion: 94 Resp: 324
 Ion Ratio Lower Upper
 94 100
 96 20.9 76.7 115.1#



#6
 Chloroethane
 Concen: Below Cal
 RT: 1.72 min Scan# 93
 Delta R.T. 0.01 min
 Lab File: VX006202.D
 Acq: 27 Nov 2018 04:04

Tgt Ion: 64 Resp: 137
 Ion Ratio Lower Upper
 64 100
 66 178.2 25.1 37.7#

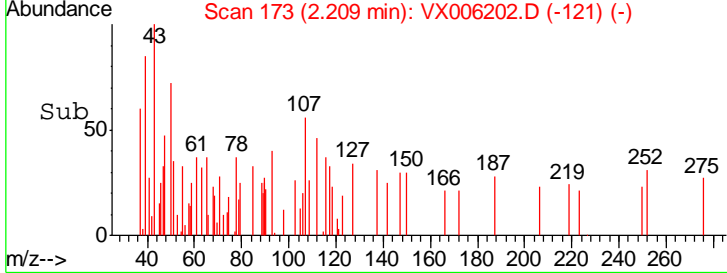
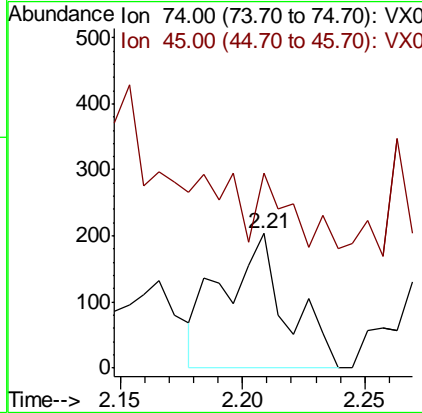
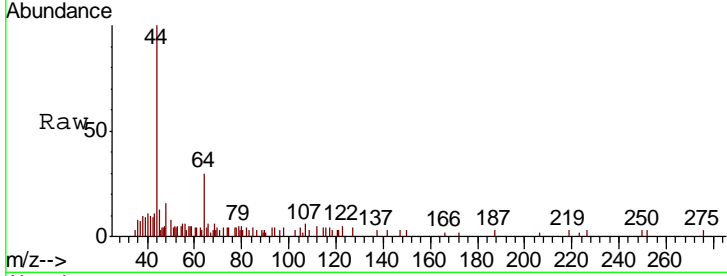




#8
 Diethyl Ether
 Concen: 0.263 ug/l
 RT: 2.21 min Scan# 173
 Delta R.T. 0.02 min
 Lab File: VX006202.D
 Acq: 27 Nov 2018 04:04

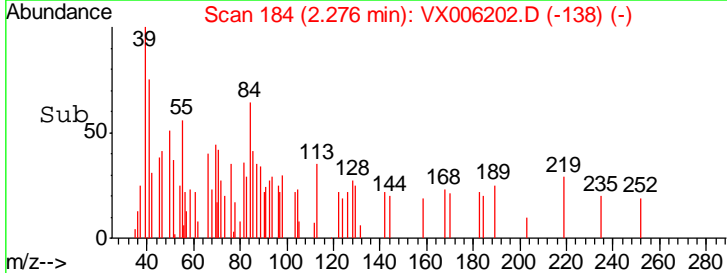
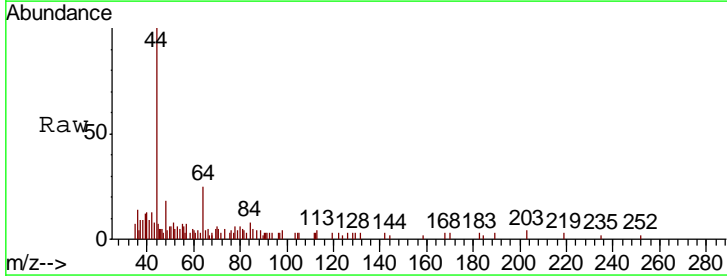
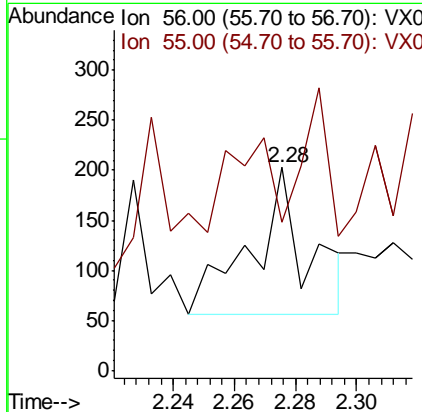
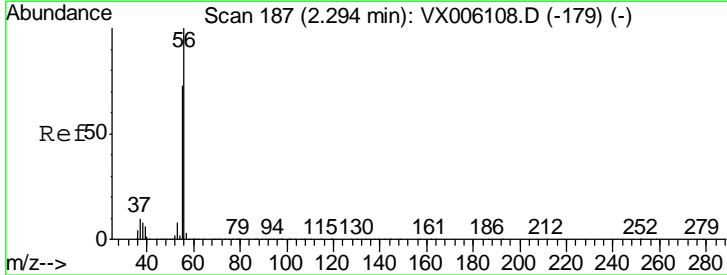
Instrument :
 MSVOA_X
ClientSampled :
 PB115023ZHE#05

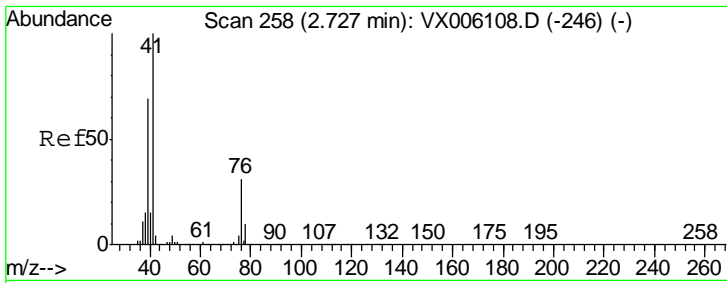
Tgt Ion: 74 Resp: 370
 Ion Ratio Lower Upper
 74 100
 45 0.0 52.2 156.6#



#13
 Acrolein
 Concen: 0.474 ug/l
 RT: 2.28 min Scan# 184
 Delta R.T. -0.02 min
 Lab File: VX006202.D
 Acq: 27 Nov 2018 04:04

Tgt Ion: 56 Resp: 186
 Ion Ratio Lower Upper
 56 100
 55 58.6 57.8 86.6

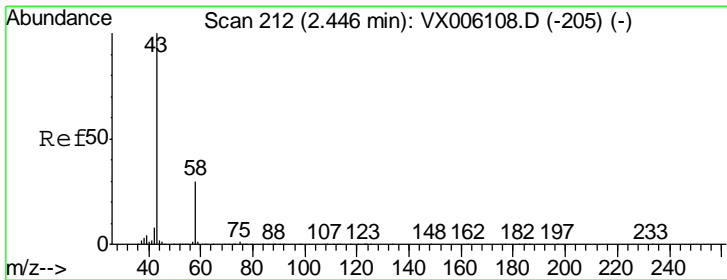
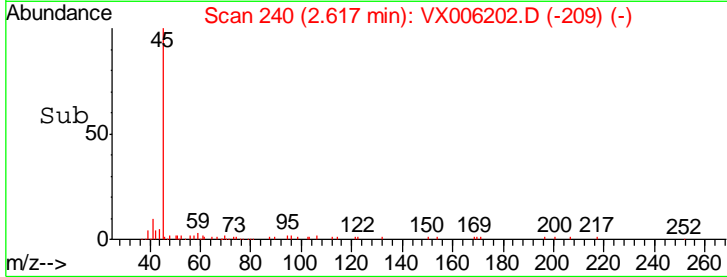
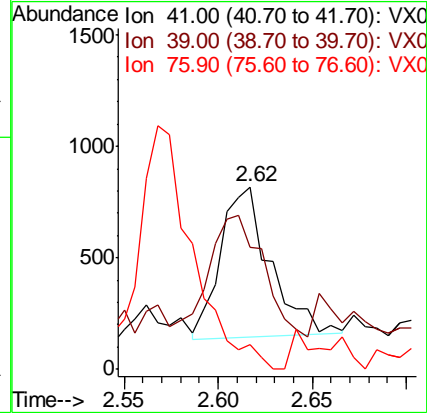
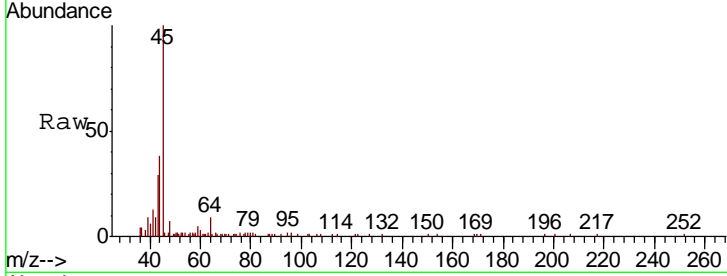




#14
 Allvl chloride
 Concen: 0.312 ug/l
 RT: 2.62 min Scan# 240
 Delta R.T. -0.11 min
 Lab File: VX006202.D
 Acq: 27 Nov 2018 04:04

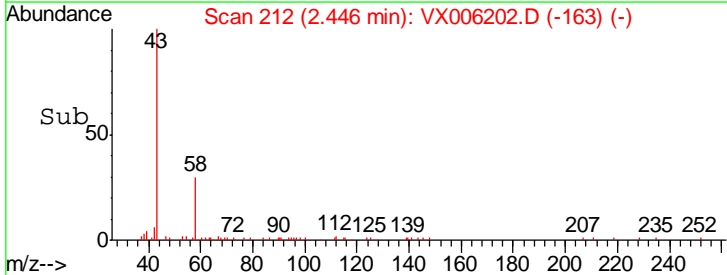
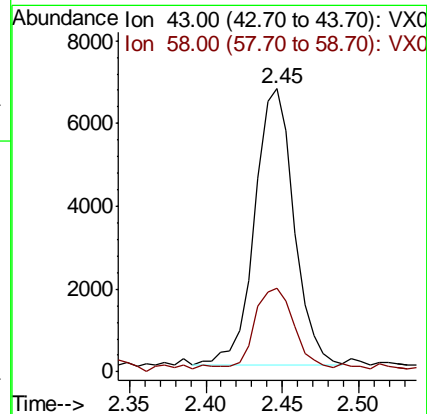
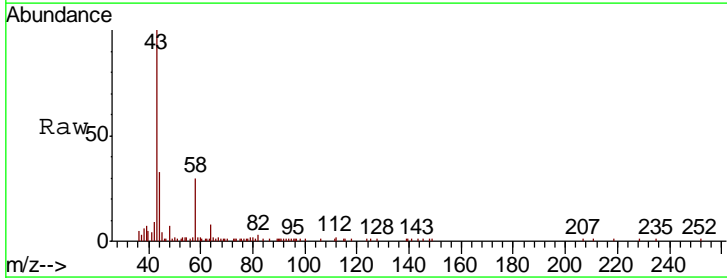
Instrument : MSVOA_X
 ClientSampleId : PB115023ZHE#05

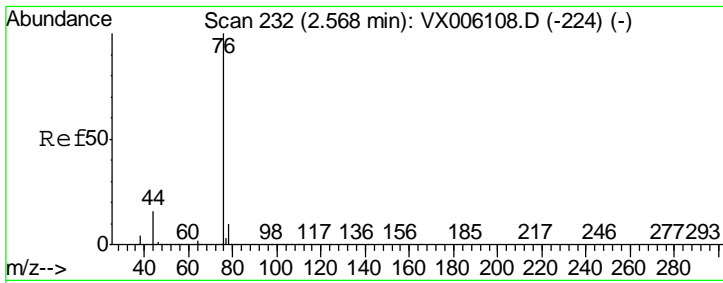
Tgt Ion	Resp	Lower	Upper
41	1226		
39	100.7	52.5	78.7#
76	0.0	23.4	35.2#



#16
 Acetone
 Concen: 8.698 ug/l
 RT: 2.45 min Scan# 212
 Delta R.T. 0.00 min
 Lab File: VX006202.D
 Acq: 27 Nov 2018 04:04

Tgt Ion	Resp	Lower	Upper
43	11899		
58	29.5	23.8	35.8

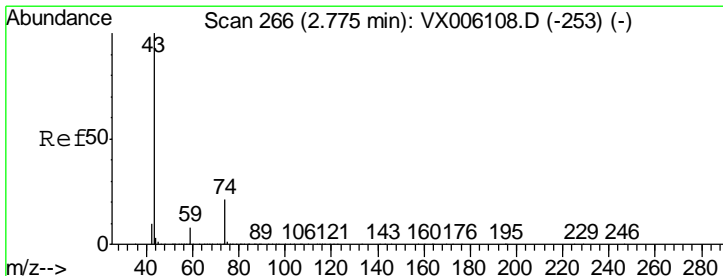
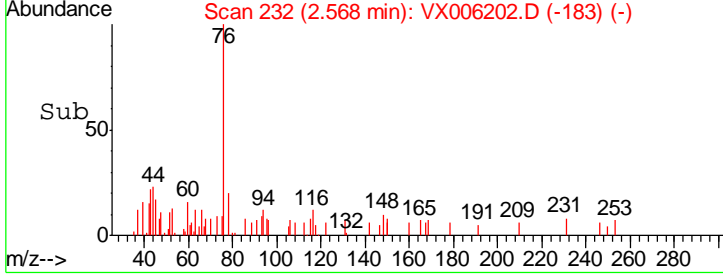
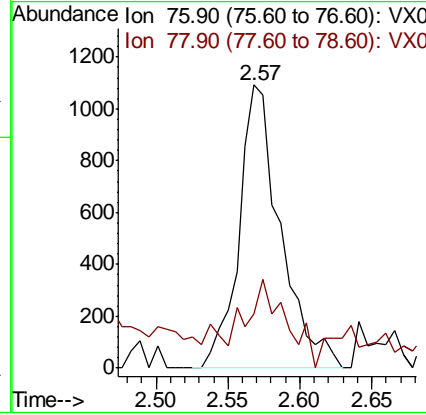
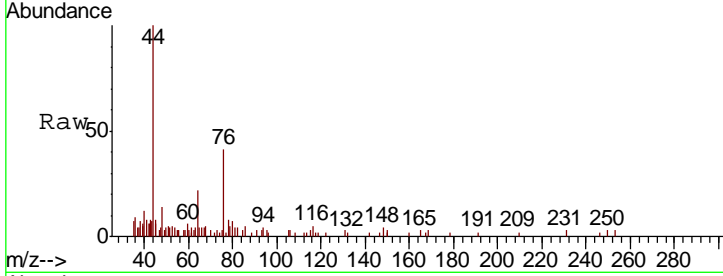




#17
 Carbon Disulfide
 Concen: 0.421 ug/l
 RT: 2.57 min Scan# 232
 Delta R.T. 0.00 min
 Lab File: VX006202.D
 Acq: 27 Nov 2018 04:04

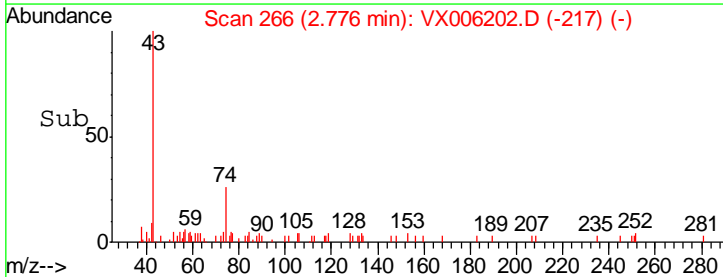
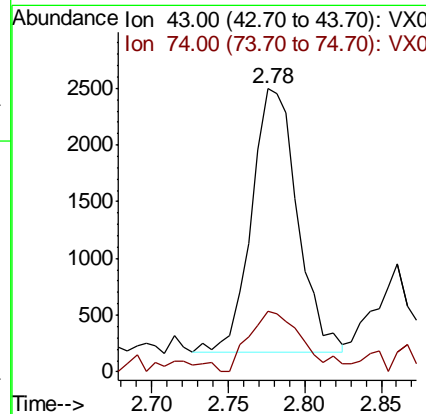
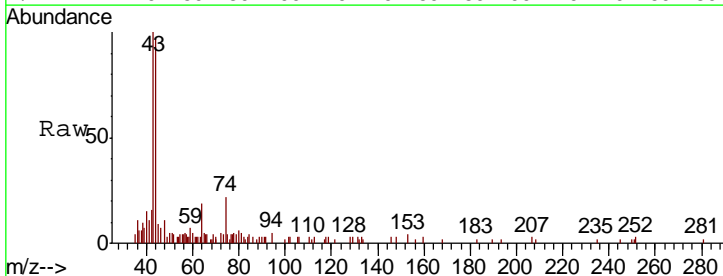
Instrument : MSVOA_X
 ClientSampled : PB115023ZHE#05

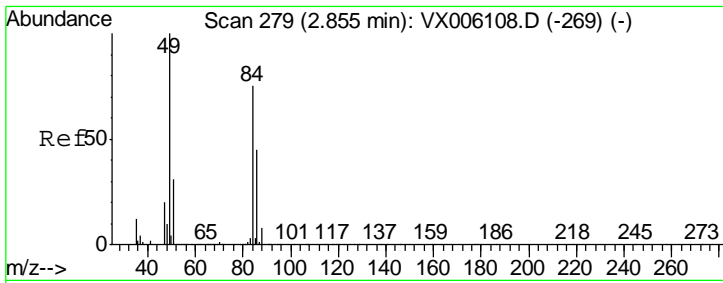
Tgt Ion	Resp	Lower	Upper
76	100		
78	8.4	7.7	11.5



#18
 Methyl Acetate
 Concen: 1.382 ug/l
 RT: 2.78 min Scan# 266
 Delta R.T. 0.00 min
 Lab File: VX006202.D
 Acq: 27 Nov 2018 04:04

Tgt Ion	Resp	Lower	Upper
43	100		
74	27.4	17.3	25.9#

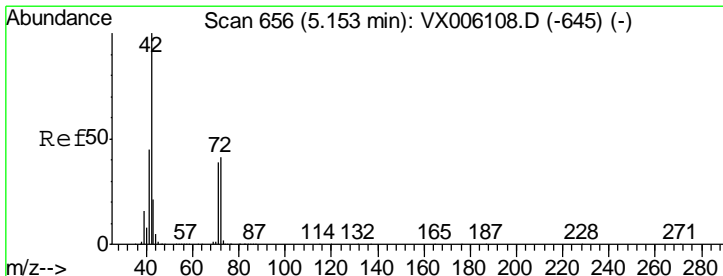
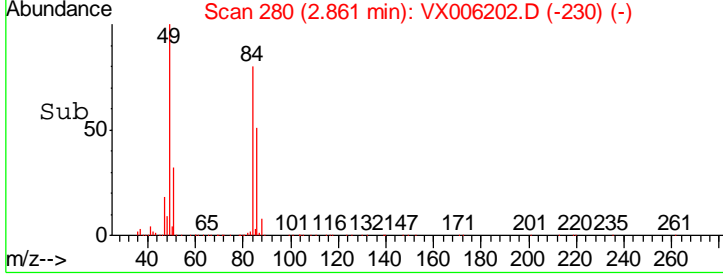
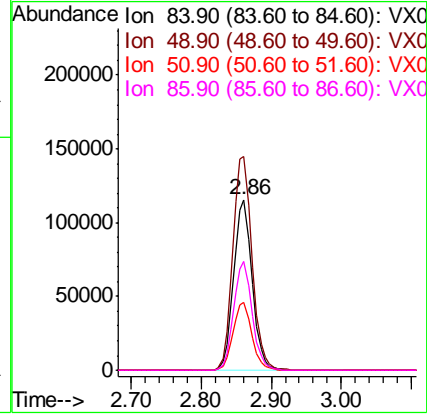
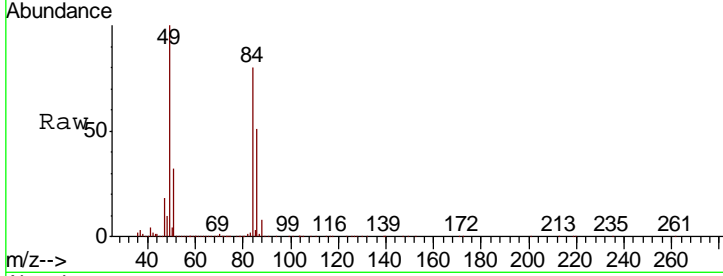




#20
Methylene Chloride
Concen: 102.870 ug/l
RT: 2.86 min Scan# 280
Delta R.T. 0.01 min
Lab File: VX006202.D
Acq: 27 Nov 2018 04:04

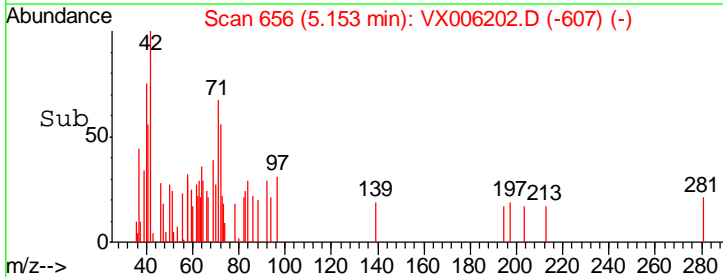
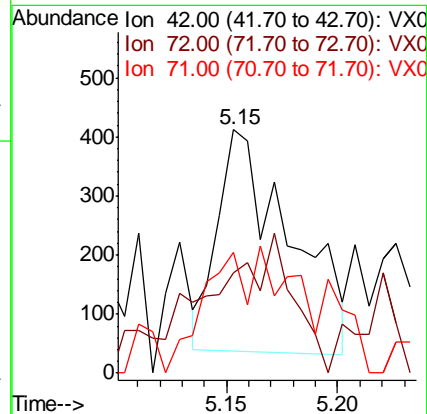
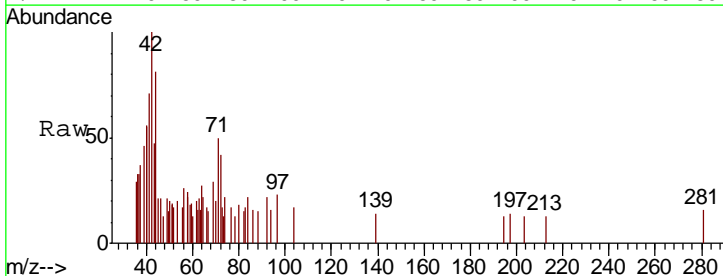
Instrument : MSVOA_X
ClientSampled : PB115023ZHE#05

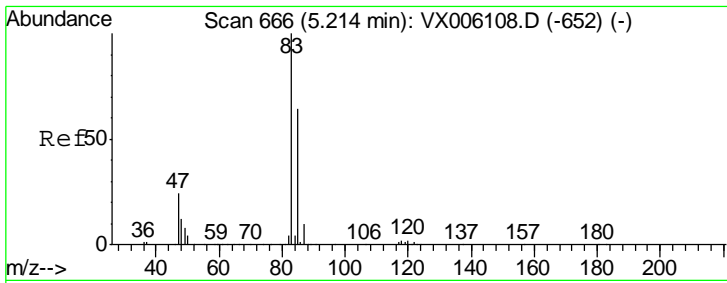
Tgt Ion	Resp	Lower	Upper
84	100		
49	125.4	106.6	159.8
51	40.0	32.6	49.0
86	64.2	48.4	72.6



#29
Tetrahydrofuran
Concen: 0.540 ug/l
RT: 5.15 min Scan# 656
Delta R.T. 0.00 min
Lab File: VX006202.D
Acq: 27 Nov 2018 04:04

Tgt Ion	Resp	Lower	Upper
42	100		
72	54.7	33.0	49.6#
71	32.9	31.0	46.4

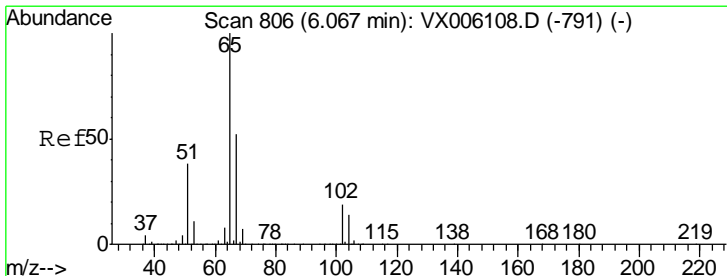
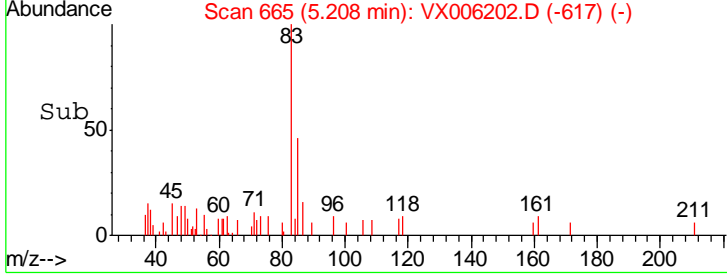
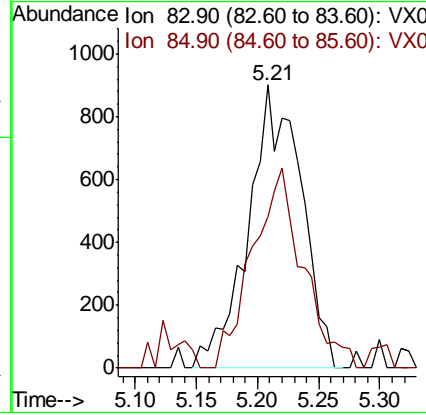
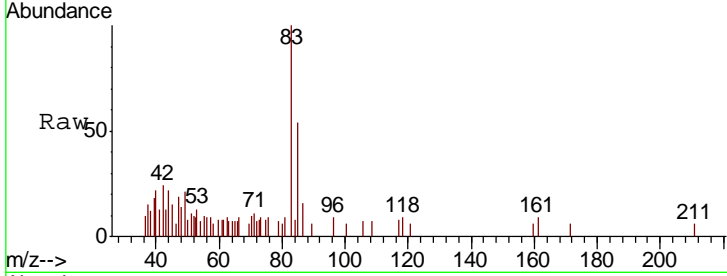




#30
 Chloroform
 Concen: 0.567 ug/l
 RT: 5.21 min Scan# 665
 Delta R.T. -0.01 min
 Lab File: VX006202.D
 Acq: 27 Nov 2018 04:04

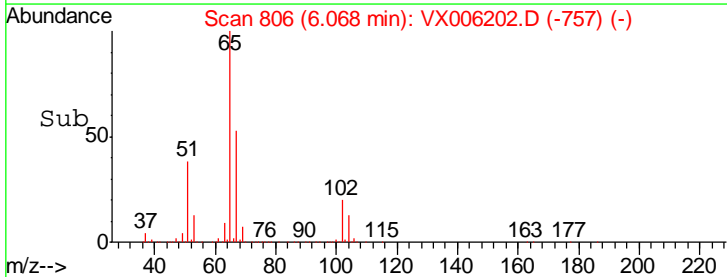
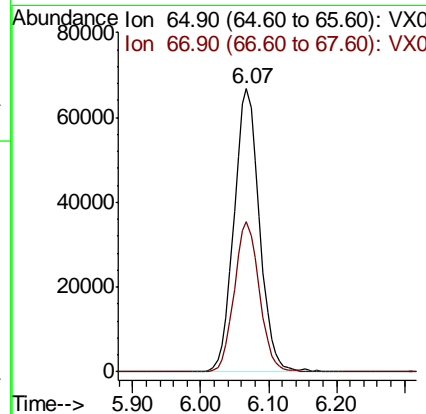
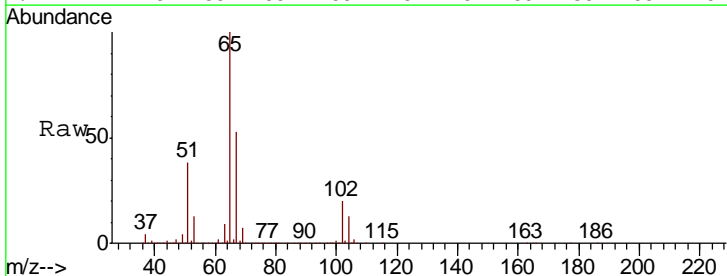
Instrument : MSVOA_X
 ClientSampleID : PB115023ZHE#05

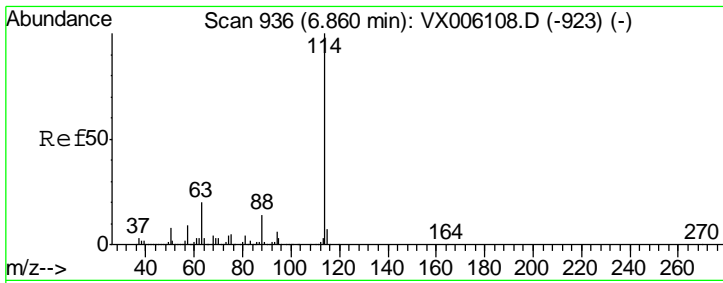
Tgt Ion	Resp	Lower	Upper
83	100		
85	47.2	51.0	76.4#



#33
 1,2-Dichloroethane-d4
 Concen: 56.163 ug/l
 RT: 6.07 min Scan# 806
 Delta R.T. 0.00 min
 Lab File: VX006202.D
 Acq: 27 Nov 2018 04:04

Tgt Ion	Resp	Lower	Upper
65	100		
67	52.6	0.0	105.8

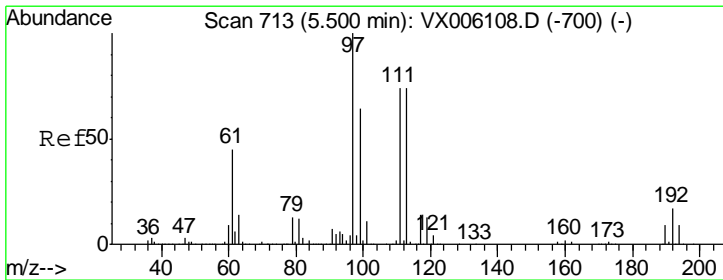
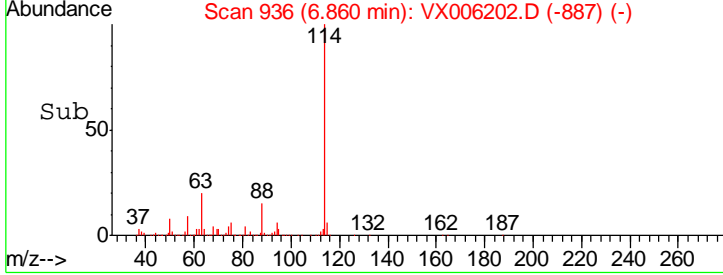
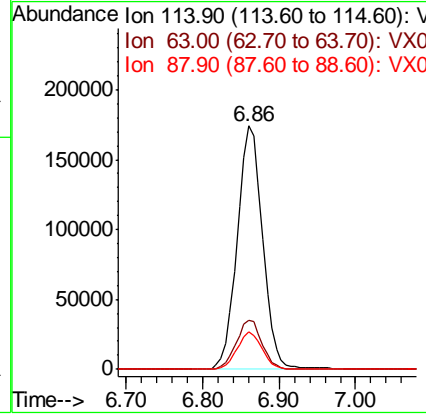
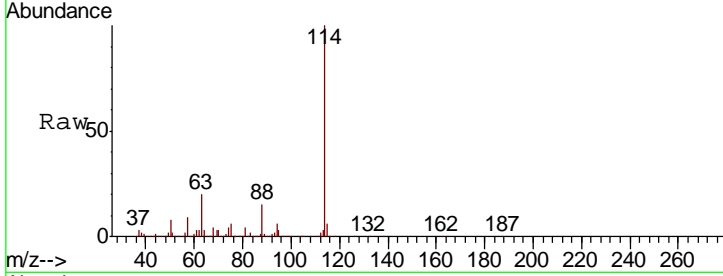




#34
 1,4-Difluorobenzene
 Concen: 50.000 ug/l
 RT: 6.86 min Scan# 936
 Delta R.T. 0.00 min
 Lab File: VX006202.D
 Acq: 27 Nov 2018 04:04

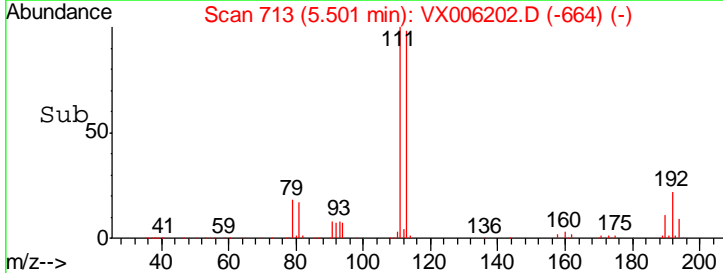
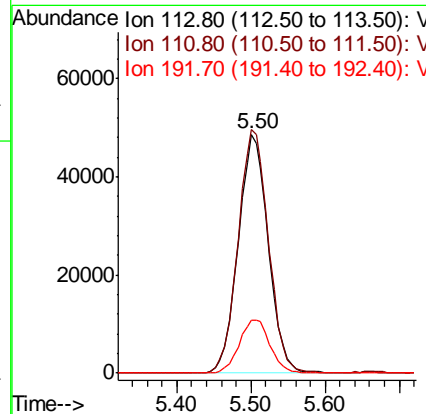
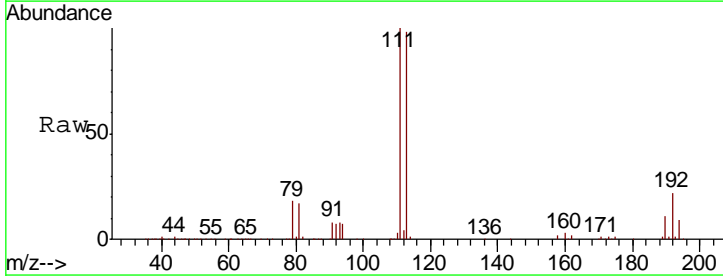
Instrument : MSVOA_X
 ClientSampleId : PB115023ZHE#05

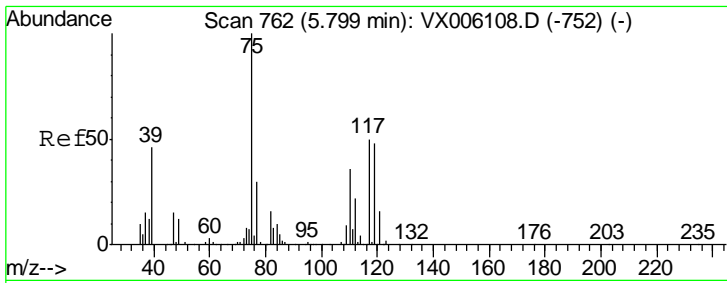
Tgt Ion	Resp	Lower	Upper
114	401797		
63	20.2	0.0	39.2
88	15.4	0.0	28.6



#35
 Dibromofluoromethane
 Concen: 53.395 ug/l
 RT: 5.50 min Scan# 713
 Delta R.T. 0.00 min
 Lab File: VX006202.D
 Acq: 27 Nov 2018 04:04

Tgt Ion	Resp	Lower	Upper
113	137718		
111	103.1	81.5	122.3
192	22.8	18.6	28.0

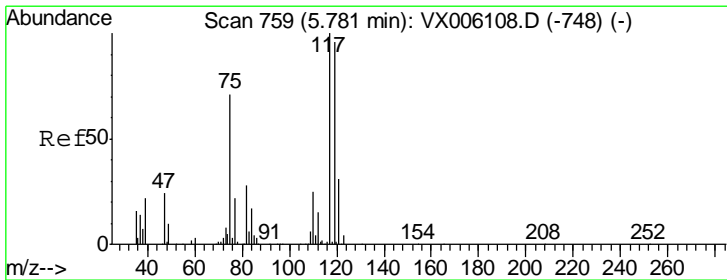
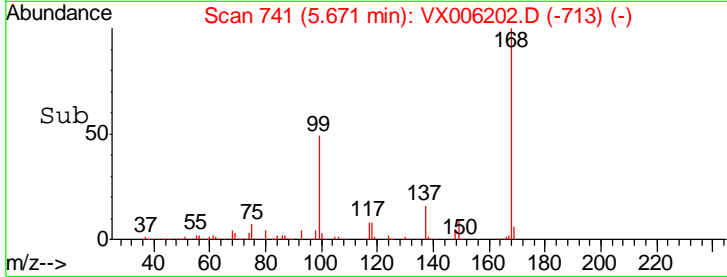
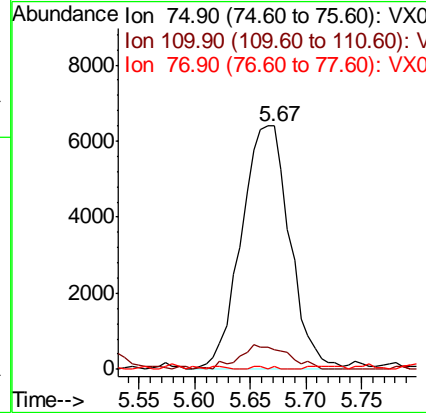
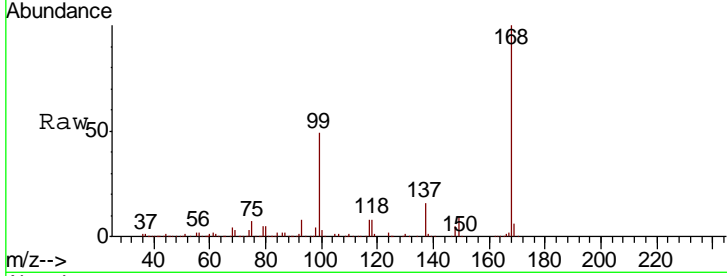




#36
 1,1-Dichloropropene
 Concen: 5.300 ug/l
 RT: 5.67 min Scan# 741
 Delta R.T. -0.13 min
 Lab File: VX006202.D
 Acq: 27 Nov 2018 04:04

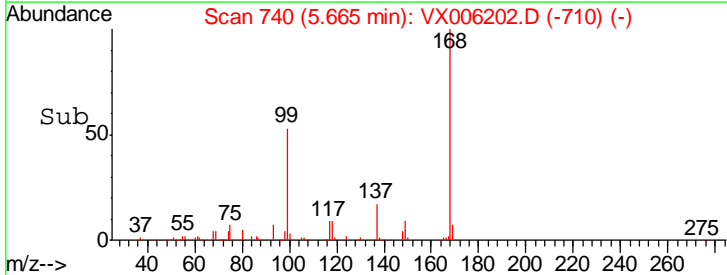
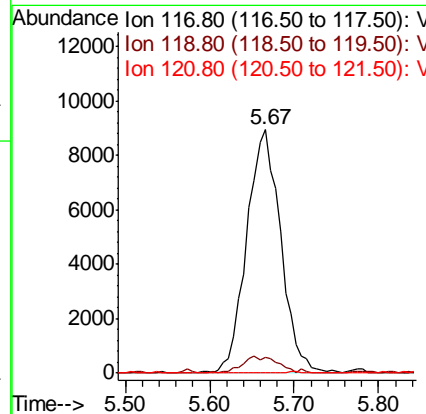
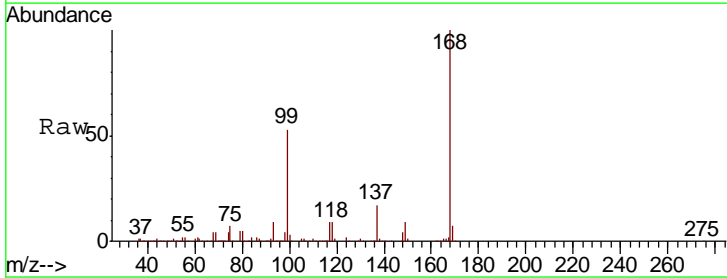
Instrument :
 MSVOA_X
 ClientSampleId :
 PB115023ZHE#05

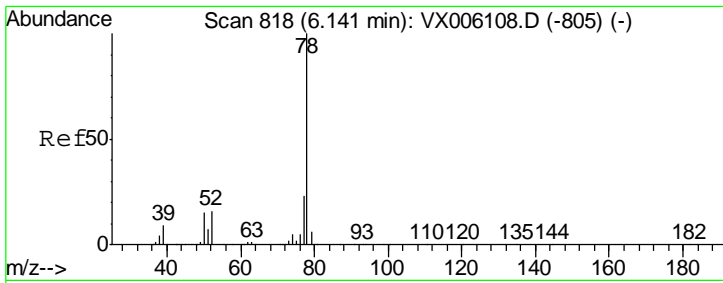
Tgt Ion	Resp	Lower	Upper
75	19373		
110	10.0	17.8	53.3#
77	0.4	24.5	36.7#



#38
 Carbon Tetrachloride
 Concen: 7.112 ug/l
 RT: 5.67 min Scan# 740
 Delta R.T. -0.12 min
 Lab File: VX006202.D
 Acq: 27 Nov 2018 04:04

Tgt Ion	Resp	Lower	Upper
117	24434		
119	6.3	76.3	114.5#
121	0.0	24.7	37.1#

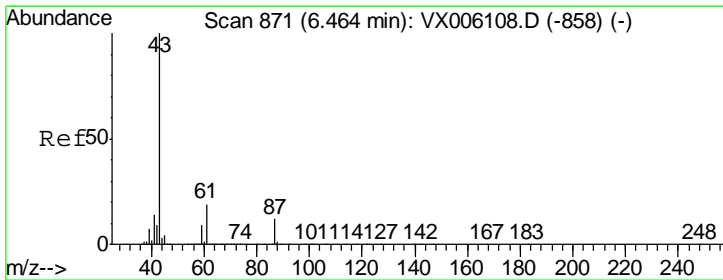
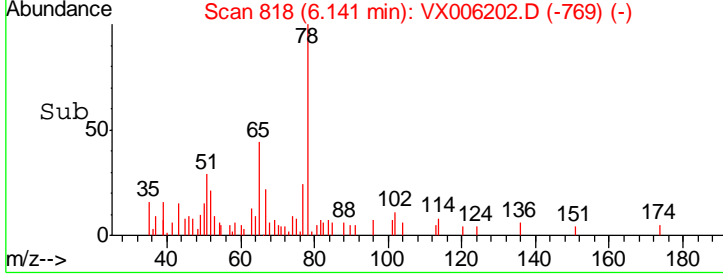
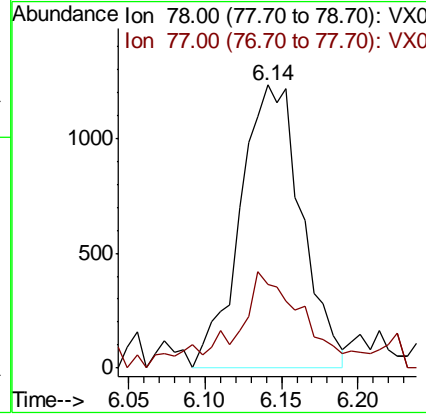
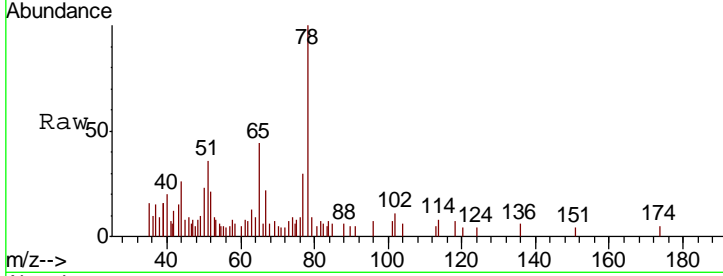




#40
Benzene
Concen: 0.320 ug/l
RT: 6.14 min Scan# 818
Delta R.T. 0.00 min
Lab File: VX006202.D
Acq: 27 Nov 2018 04:04

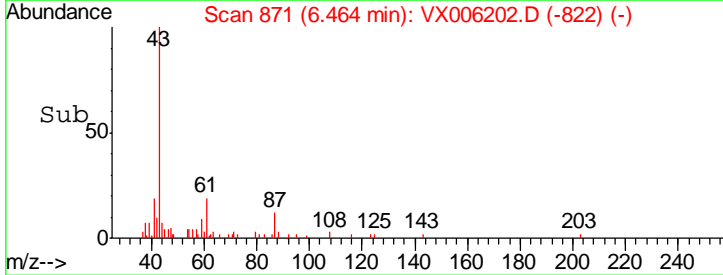
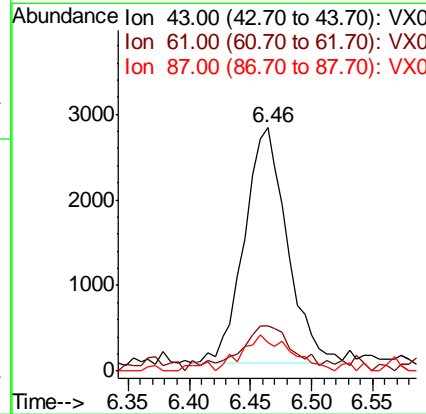
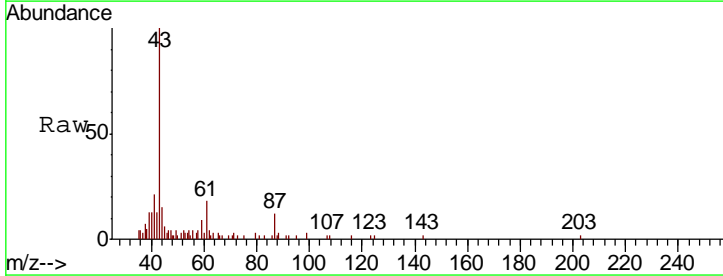
Instrument : MSVOA_X
ClientSampled : PB115023ZHE#05

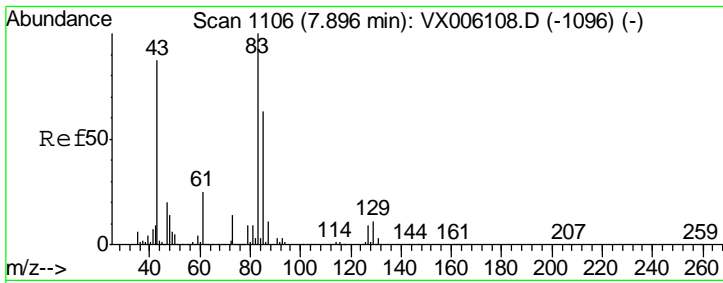
Tgt Ion	Resp	Lower	Upper
78	3441		
77	26.2	18.8	28.2



#43
Isopropyl Acetate
Concen: 0.990 ug/l
RT: 6.46 min Scan# 871
Delta R.T. 0.00 min
Lab File: VX006202.D
Acq: 27 Nov 2018 04:04

Tgt Ion	Resp	Lower	Upper
43	6727		
61	25.6	15.2	22.8#
87	17.3	9.6	14.4#

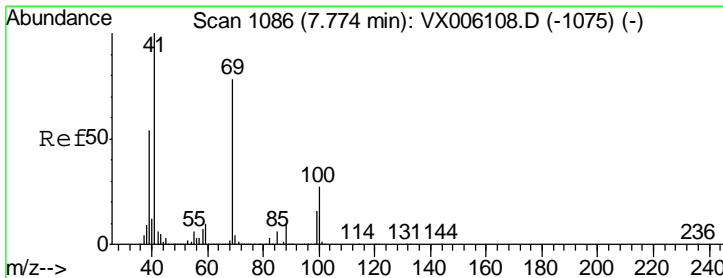
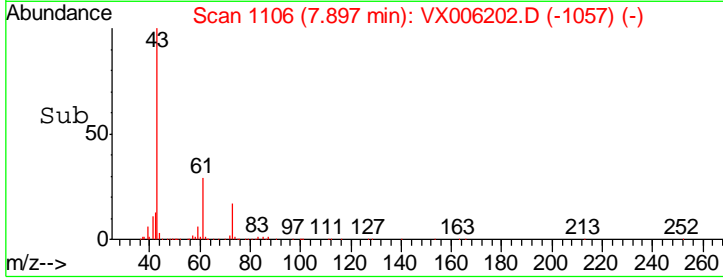
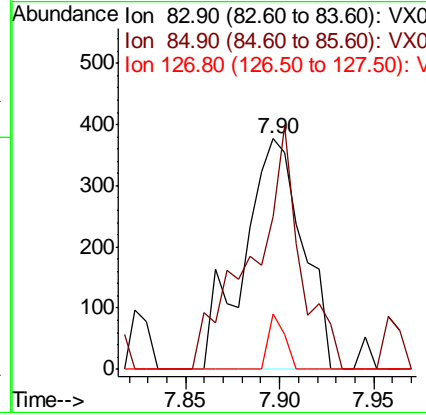
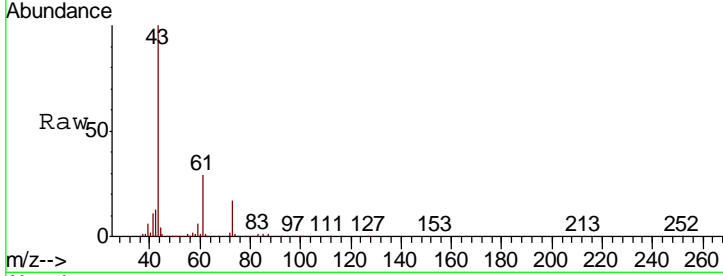




#47
 Bromodichloromethane
 Concen: 0.226 ug/l
 RT: 7.90 min Scan# 1106
 Delta R.T. 0.00 min
 Lab File: VX006202.D
 Acq: 27 Nov 2018 04:04

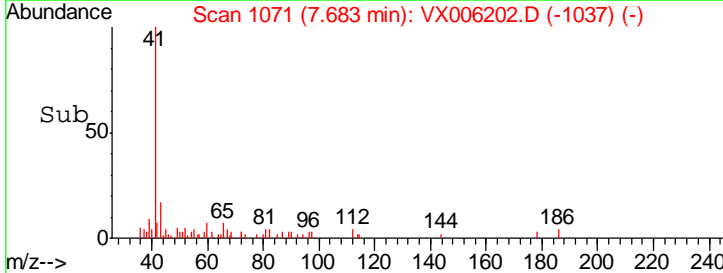
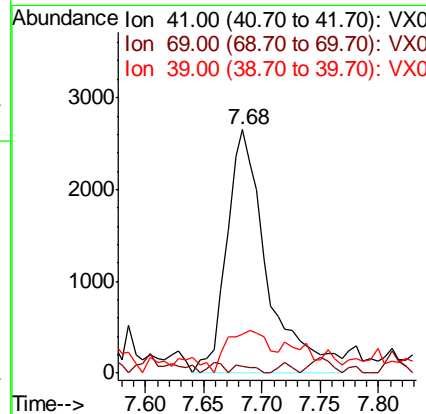
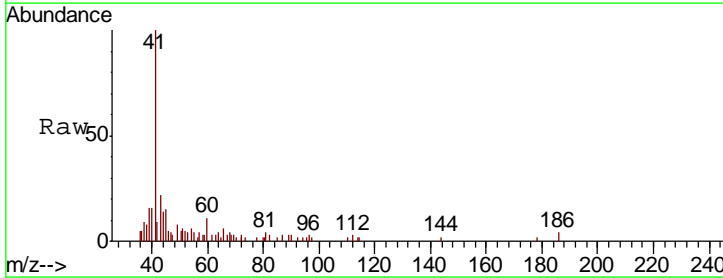
Instrument : MSVOA_X
 ClientSampled : PB115023ZHE#05

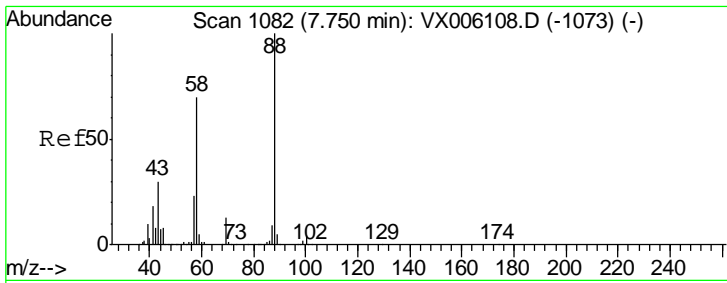
Tgt Ion	Resp	Lower	Upper
83	100		
85	66.3	50.4	75.6
127	24.1	7.0	10.4#



#48
 Methyl methacrylate
 Concen: 1.857 ug/l
 RT: 7.68 min Scan# 1071
 Delta R.T. -0.09 min
 Lab File: VX006202.D
 Acq: 27 Nov 2018 04:04

Tgt Ion	Resp	Lower	Upper
41	100		
69	1.5	62.8	94.2#
39	18.2	43.8	65.6#

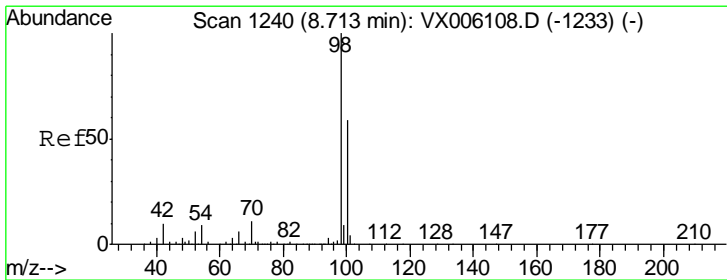
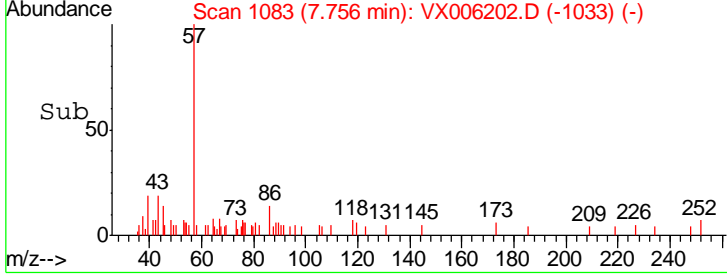
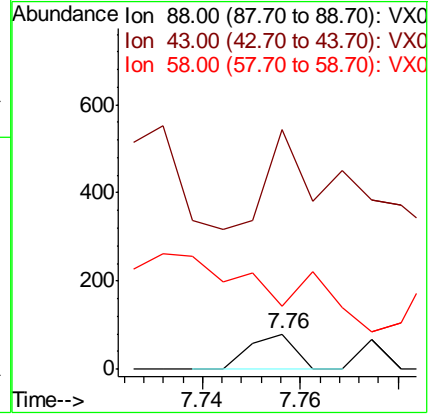
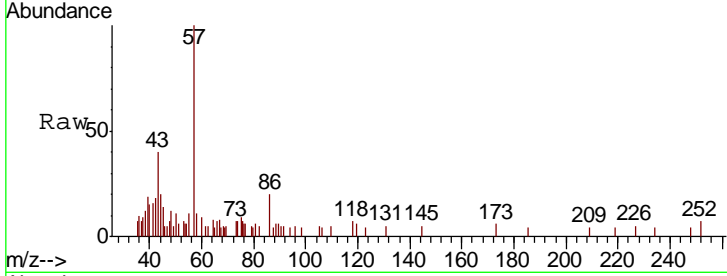




#49
 1,4-Dioxane
 Concen: 0.624 ug/l
 RT: 7.76 min Scan# 1083
 Delta R.T. 0.01 min
 Lab File: VX006202.D
 Acq: 27 Nov 2018 04:04

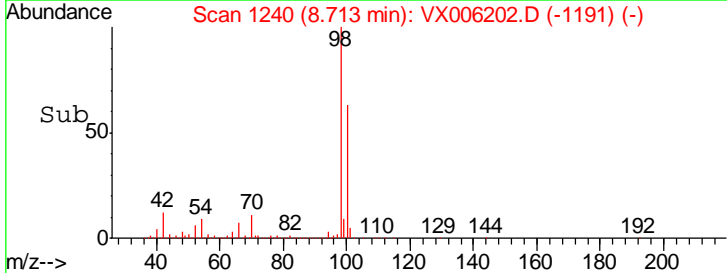
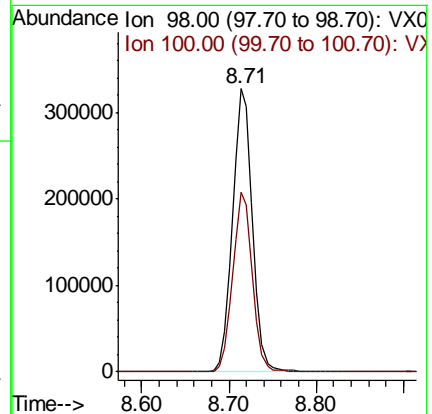
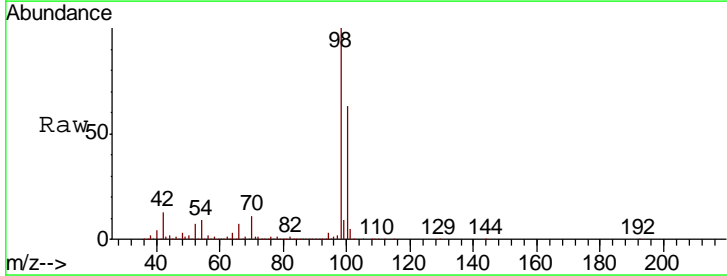
Instrument : MSVOA_X
 ClientSampled : PB115023ZHE#05

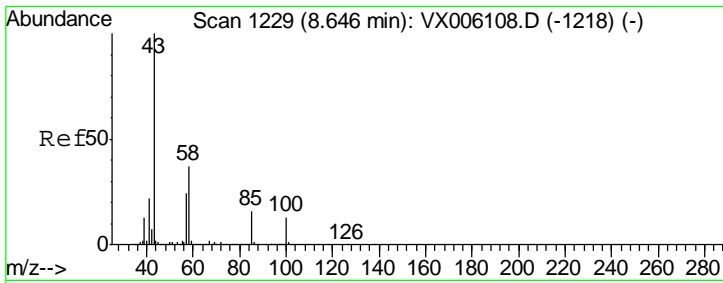
Tgt Ion	Resp	Lower	Upper
88	100		
43	0.0	26.7	40.1#
58	0.0	58.5	87.7#



#50
 Toluene-d8
 Concen: 52.457 ug/l
 RT: 8.71 min Scan# 1240
 Delta R.T. 0.00 min
 Lab File: VX006202.D
 Acq: 27 Nov 2018 04:04

Tgt Ion	Resp	Lower	Upper
98	100		
100	62.5	51.0	76.4

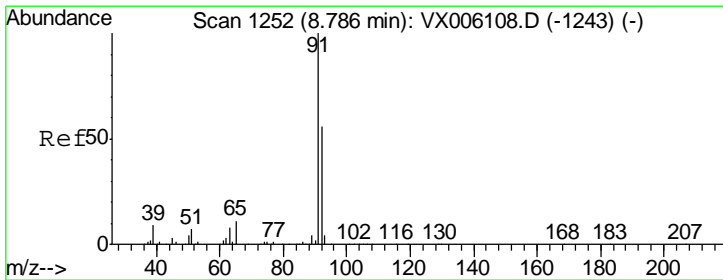
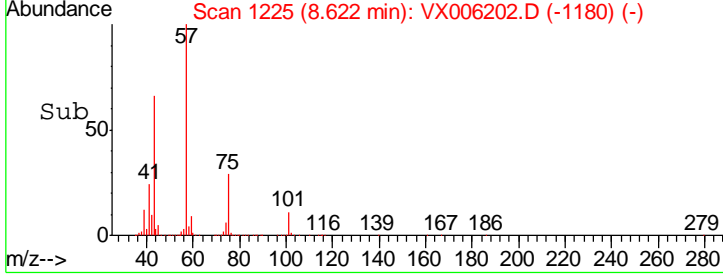
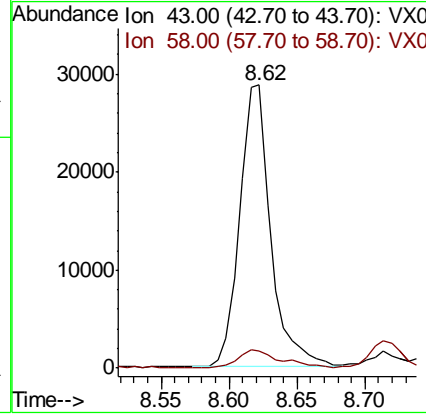
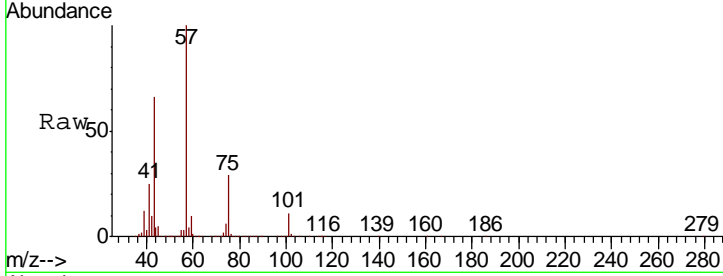




#51
 4-Methyl-2-Pentanone
 Concen: 9.386 ug/l
 RT: 8.62 min Scan# 1225
 Delta R.T. -0.02 min
 Lab File: VX006202.D
 Acq: 27 Nov 2018 04:04

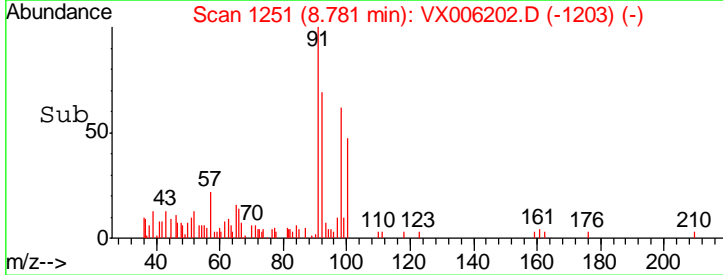
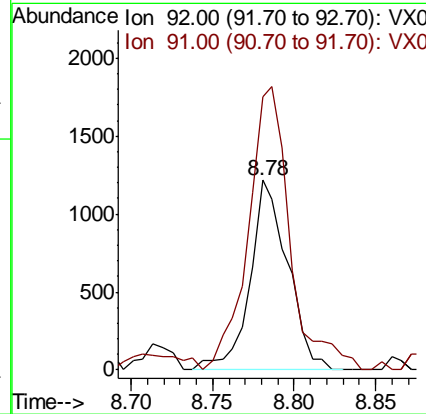
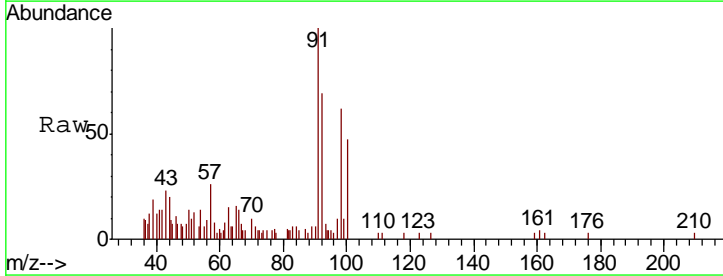
Instrument : MSVOA_X
 ClientSampled : PB115023ZHE#05

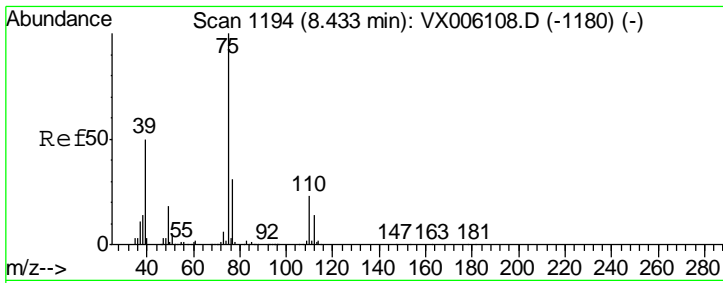
Tgt Ion	Resp	Lower	Upper
43	100		
58	9.2	29.9	44.9#



#52
 Toluene
 Concen: 0.295 ug/l
 RT: 8.78 min Scan# 1251
 Delta R.T. -0.01 min
 Lab File: VX006202.D
 Acq: 27 Nov 2018 04:04

Tgt Ion	Resp	Lower	Upper
92	100		
91	164.8	142.5	213.7

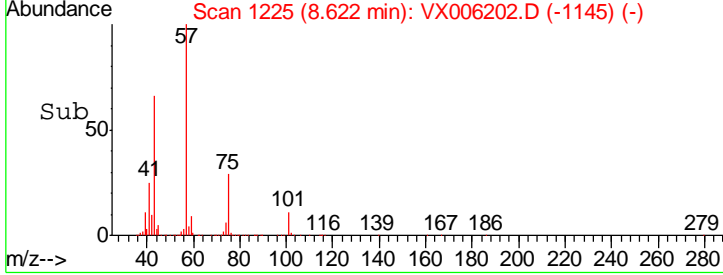
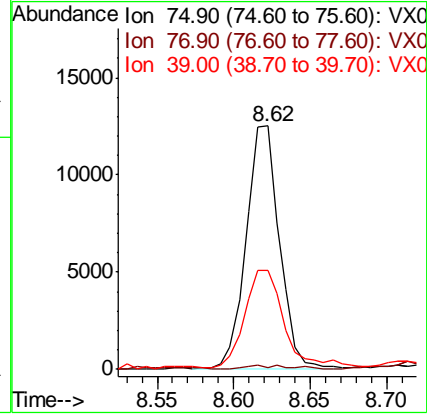
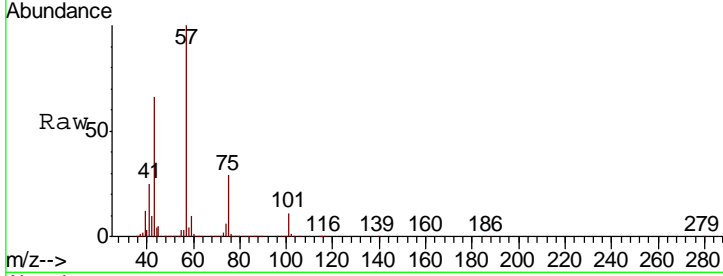




#54
 cis-1,3-Dichloropropene
 Concen: 4.571 ug/l
 RT: 8.62 min Scan# 1225
 Delta R.T. 0.19 min
 Lab File: VX006202.D
 Acq: 27 Nov 2018 04:04

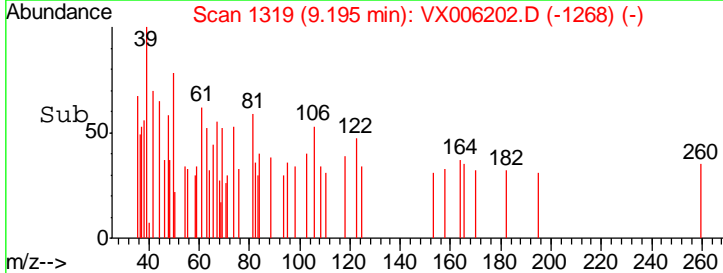
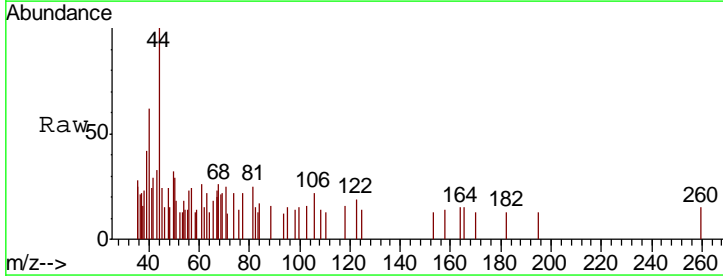
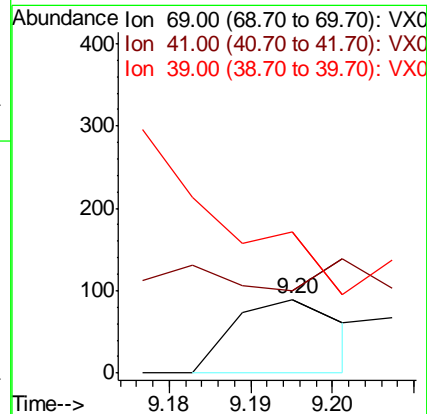
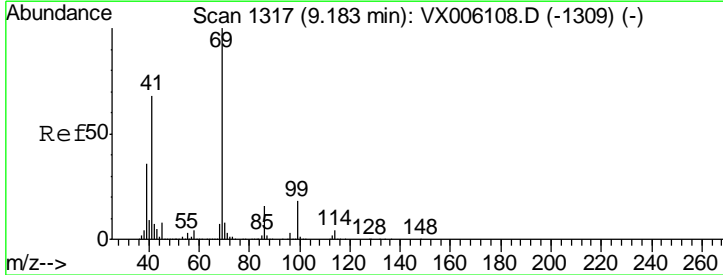
Instrument : MSVOA_X
 ClientSampled : PB115023ZHE#05

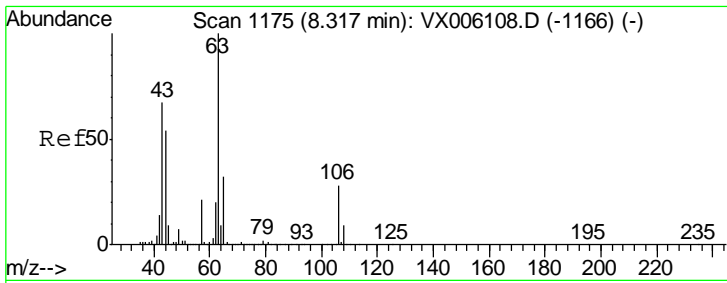
Tgt Ion	Resp	Lower	Upper
75	19034		
75	100		
77	0.9	24.7	37.1#
39	39.5	40.3	60.5#



#56
 Ethyl methacrylate
 Concen: 2.883 ug/l
 RT: 9.20 min Scan# 1319
 Delta R.T. 0.01 min
 Lab File: VX006202.D
 Acq: 27 Nov 2018 04:04

Tgt Ion	Resp	Lower	Upper
69	82		
69	100		
41	0.0	56.2	84.4#
39	0.0	29.4	44.0#

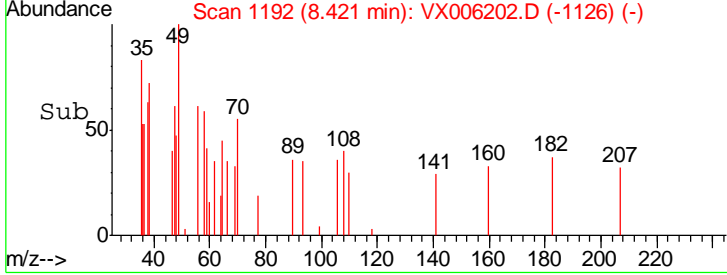
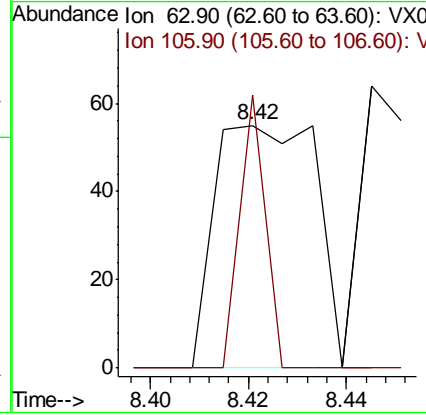
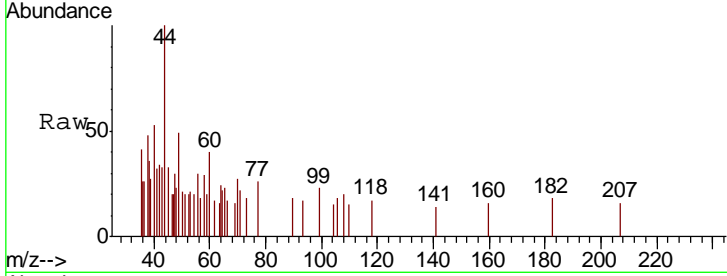




#58
 2-Chloroethyl Vinyl ether
 Concen: 6.752 ug/l
 RT: 8.42 min Scan# 1192
 Delta R.T. 0.10 min
 Lab File: VX006202.D
 Acq: 27 Nov 2018 04:04

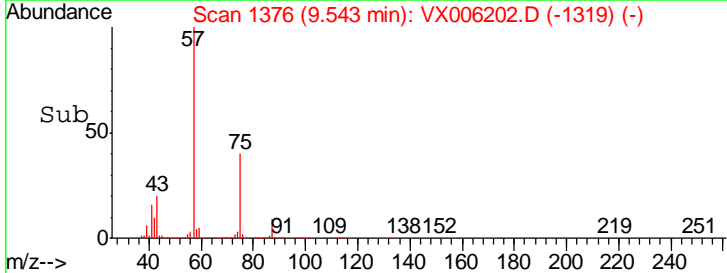
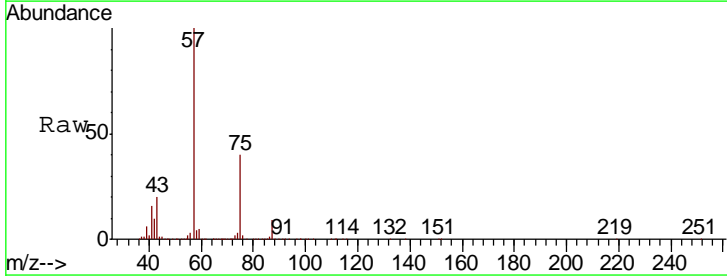
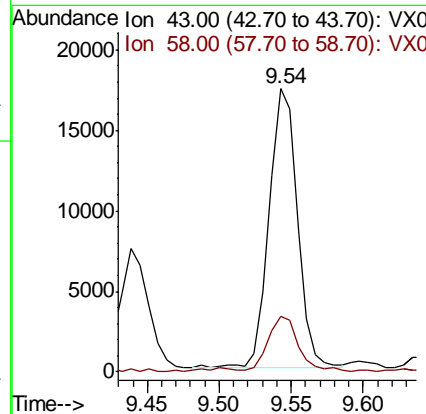
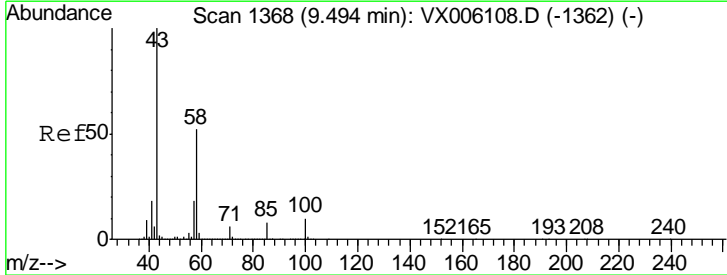
Instrument : MSVOA_X
 ClientSampled : PB115023ZHE#05

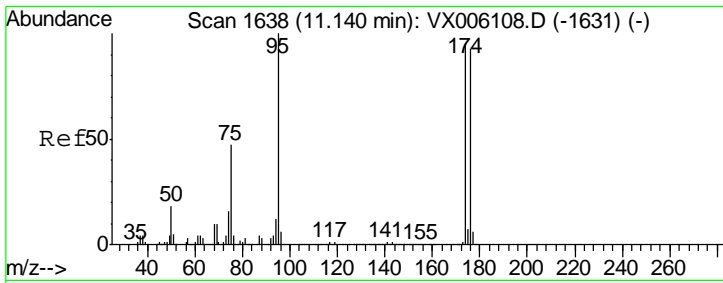
Tgt Ion	Resp	Lower	Upper
63	100		
106	29.1	21.7	32.5



#59
 2-Hexanone
 Concen: 6.154 ug/l
 RT: 9.54 min Scan# 1376
 Delta R.T. 0.05 min
 Lab File: VX006202.D
 Acq: 27 Nov 2018 04:04

Tgt Ion	Resp	Lower	Upper
43	100		
58	21.4	26.3	78.9#

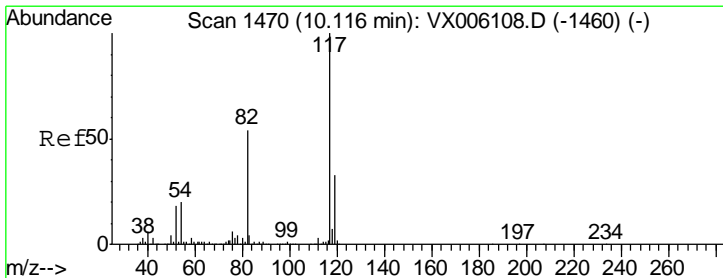
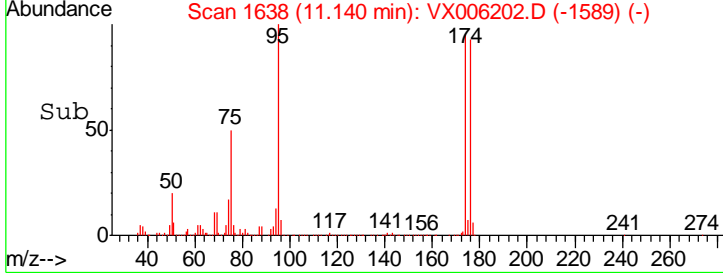
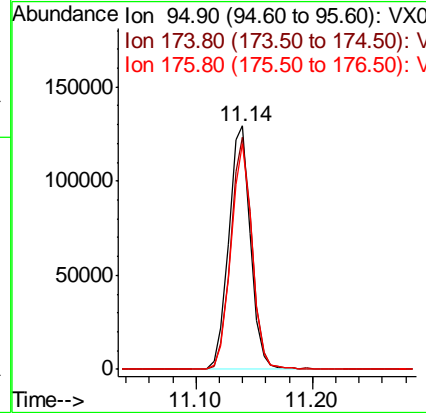
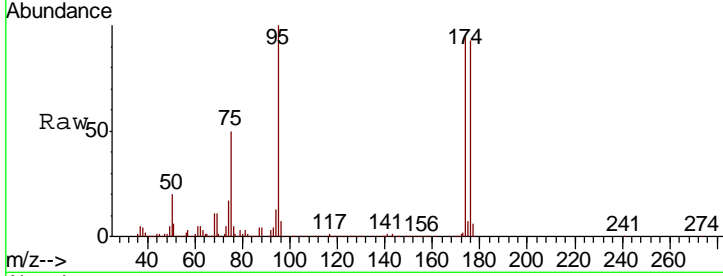




#62
 4-Bromofluorobenzene
 Concen: 45.304 ug/l
 RT: 11.14 min Scan# 1638
 Delta R.T. 0.00 min
 Lab File: VX006202.D
 Acq: 27 Nov 2018 04:04

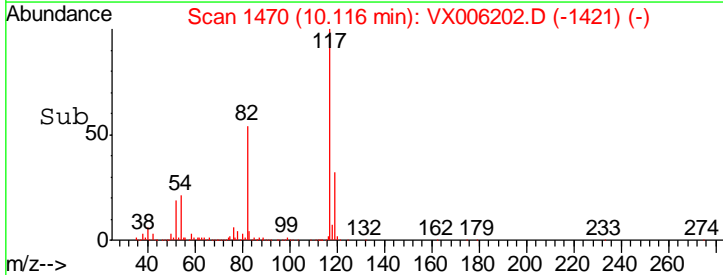
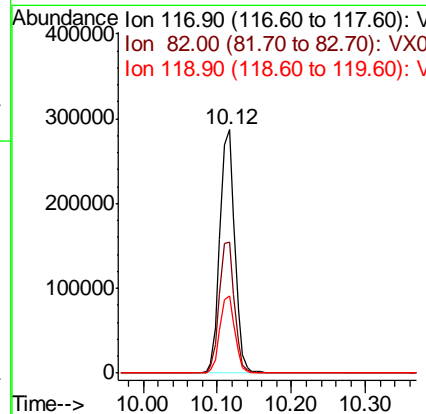
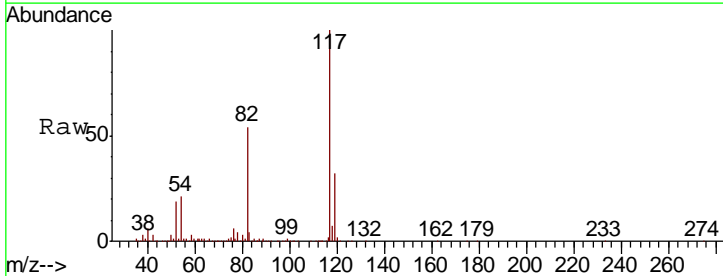
Instrument : MSVOA_X
 ClientSampled : PB115023ZHE#05

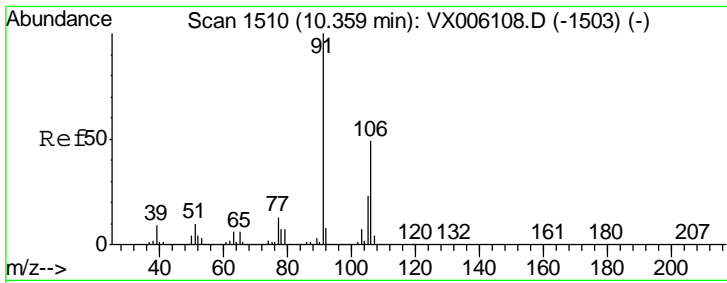
Tgt Ion	Resp	Lower	Upper
95	167221		
174	93.7	0.0	184.4
176	90.1	0.0	179.0



#63
 Chlorobenzene-d5
 Concen: 50.000 ug/l
 RT: 10.12 min Scan# 1470
 Delta R.T. 0.00 min
 Lab File: VX006202.D
 Acq: 27 Nov 2018 04:04

Tgt Ion	Resp	Lower	Upper
117	394053		
82	53.9	43.0	64.4
119	31.6	26.1	39.1

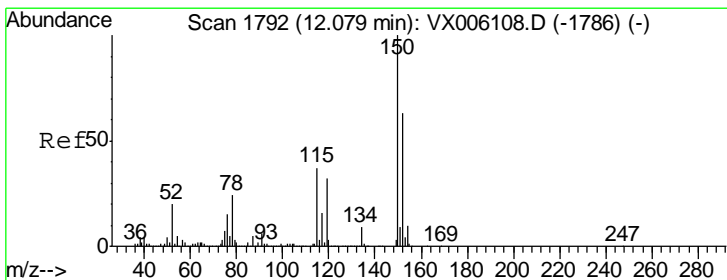
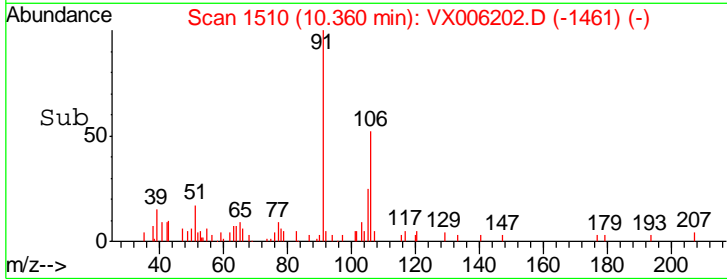
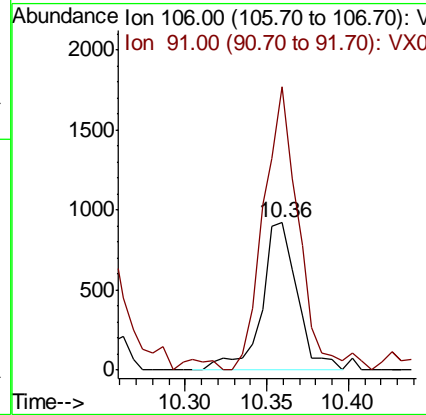
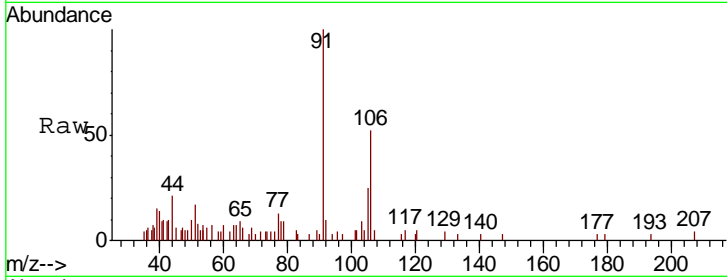




#68
 m/p-Xylenes
 Concen: 0.269 ug/l
 RT: 10.36 min Scan# 1510
 Delta R.T. 0.00 min
 Lab File: VX006202.D
 Acq: 27 Nov 2018 04:04

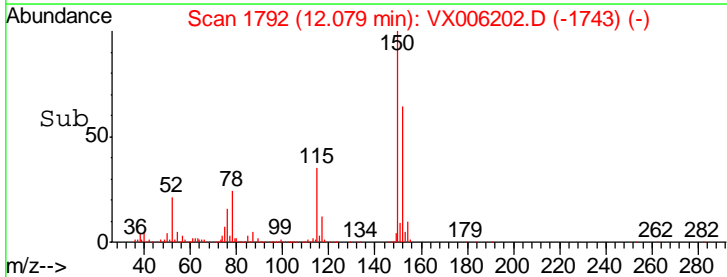
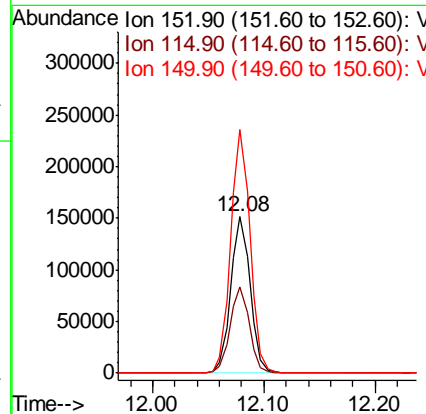
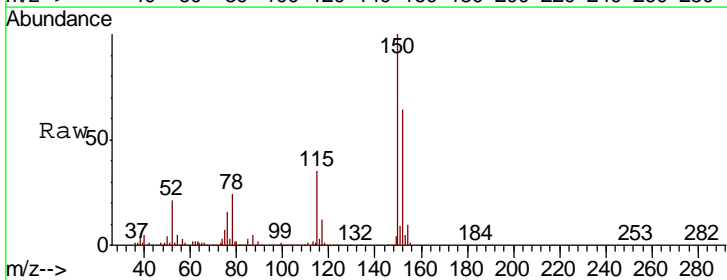
Instrument :
 MSVOA_X
 ClientSampled :
 PB115023ZHE#05

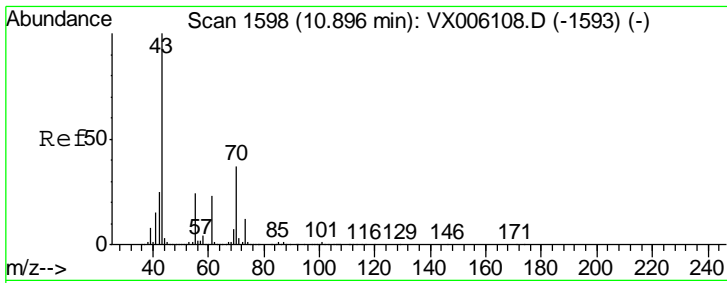
Tgt Ion:106 Resp: 1384
 Ion Ratio Lower Upper
 106 100
 91 192.2 162.0 243.0



#72
 1,4-Dichlorobenzene-d4
 Concen: 50.000 ug/l
 RT: 12.08 min Scan# 1792
 Delta R.T. 0.00 min
 Lab File: VX006202.D
 Acq: 27 Nov 2018 04:04

Tgt Ion:152 Resp: 182329
 Ion Ratio Lower Upper
 152 100
 115 55.2 39.0 116.9
 150 156.0 0.0 346.6

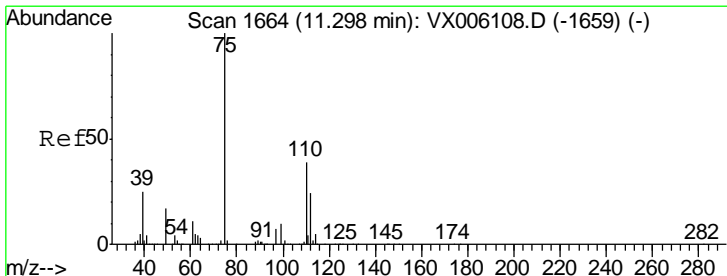
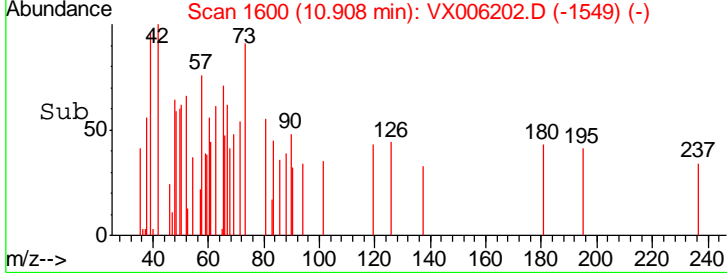
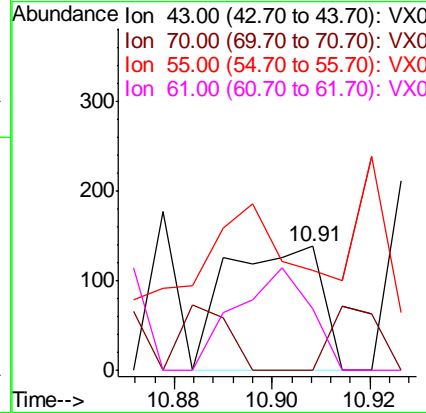
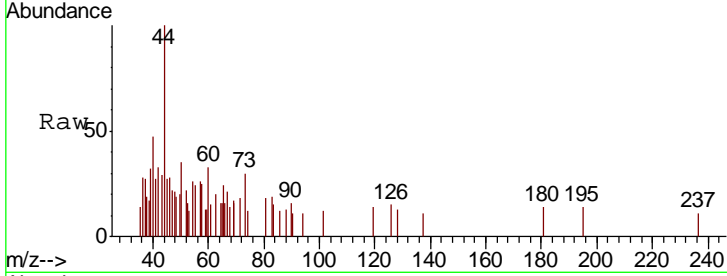




#74
 N-amyl acetate
 Concen: 2.224 ug/l
 RT: 10.91 min Scan# 1600
 Delta R.T. 0.01 min
 Lab File: VX006202.D
 Acq: 27 Nov 2018 04:04

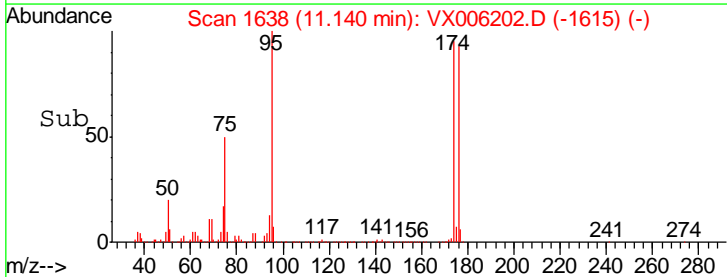
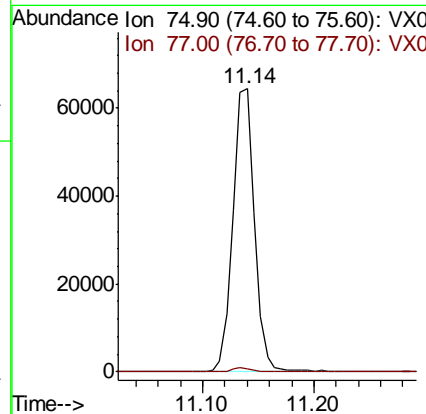
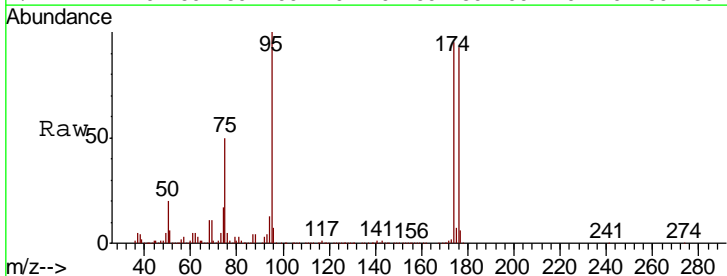
Instrument : MSVOA_X
 ClientSampleID : PB115023ZHE#05

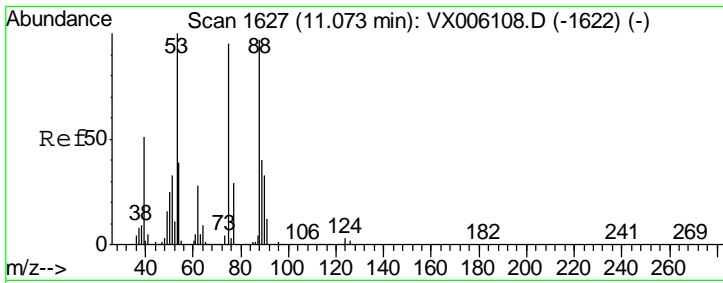
Tgt Ion	Resp	Lower	Upper
43	185		
70	0.0	31.8	47.6#
55	123.2	19.5	29.3#
61	0.0	18.6	27.8#



#76
 1,2,3-Trichloropropane
 Concen: 23.090 ug/l
 RT: 11.14 min Scan# 1638
 Delta R.T. -0.16 min
 Lab File: VX006202.D
 Acq: 27 Nov 2018 04:04

Tgt Ion	Resp	Lower	Upper
75	86673		
77	1.7	19.6	58.7#

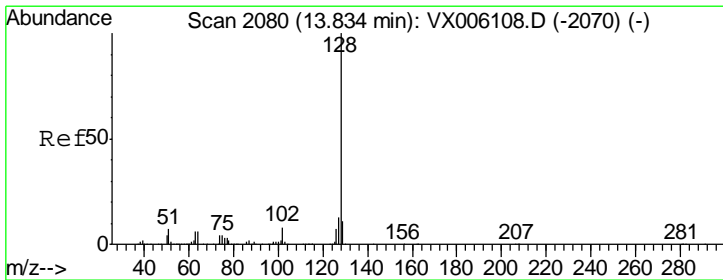
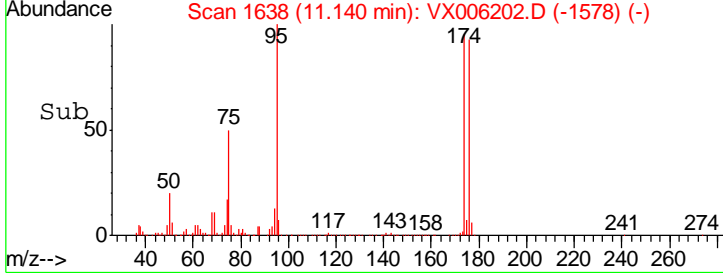
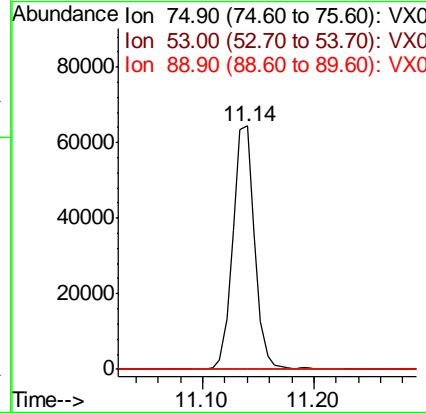
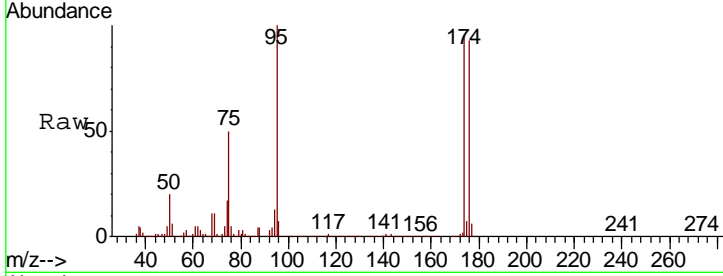




#81
 trans-1,4-Dichloro-2-butene
 Concen: 78.094 ug/l
 RT: 11.14 min Scan# 1638
 Delta R.T. 0.07 min
 Lab File: VX006202.D
 Acq: 27 Nov 2018 04:04

Instrument :
 MSVOA_X
 ClientSampleId :
 PB115023ZHE#05

Tgt Ion	Resp	Lower	Upper
75	100		
53	0.4	85.3	127.9#
89	0.0	37.2	55.8#



#95
 Naphthalene
 Concen: 0.860 ug/l
 RT: 13.83 min Scan# 2080
 Delta R.T. 0.00 min
 Lab File: VX006202.D
 Acq: 27 Nov 2018 04:04

Tgt Ion	Resp	Lower	Upper
128	100		
127	17.3	10.6	15.8#
129	15.5	8.8	13.2#

