

Data Path : Z:\VOASRV\HPCHEM1\MSVOA X\DATA\VX112719\
 Data File : VX013653.D
 Acq On : 27 Nov 2019 15:37
 Operator : JC/SP
 Sample : VX1127WBL02
 Misc : 5.0mL/MSVOA X/WATER
 ALS Vial : 14 Sample Multiplier: 1

Instrument :
 MSVOA_X
 ClientSampleId :
 VX1127WBL02

Quant Time: Nov 28 00:34:12 2019
 Quant Method : Z:\VOASRV\HPCHEM1\MSVOA X\METHOD\624X111119W.M
 Quant Title : METHOD 624 VOLATILE ORGANIC ANALYSIS
 QLast Update : Tue Nov 12 01:16:13 2019
 Response via : Initial Calibration

Internal Standards	R.T.	QIon	Response	Conc	Units	Dev(Min)
1) Bromochloromethane	5.00	128	120278	30.00	ug/l	0.00
28) 1,4-Difluorobenzene	6.85	114	682115	30.00	ug/l	0.00
57) Chlorobenzene-d5	10.11	117	594142	30.00	ug/l	0.00

System Monitoring Compounds

27) 1,2-Dichloroethane-d4	6.05	65	260697	29.35	ug/l	0.00
Spiked Amount	30.000	Range	50 - 169	Recovery	=	97.83%
60) 4-Bromofluorobenzene	11.13	95	271482	28.43	ug/l	0.00
Spiked Amount	30.000	Range	56 - 143	Recovery	=	94.77%
63) Toluene-d8	8.71	98	811686	30.21	ug/l	0.00
Spiked Amount	30.000	Range	66 - 137	Recovery	=	100.70%

Target Compounds

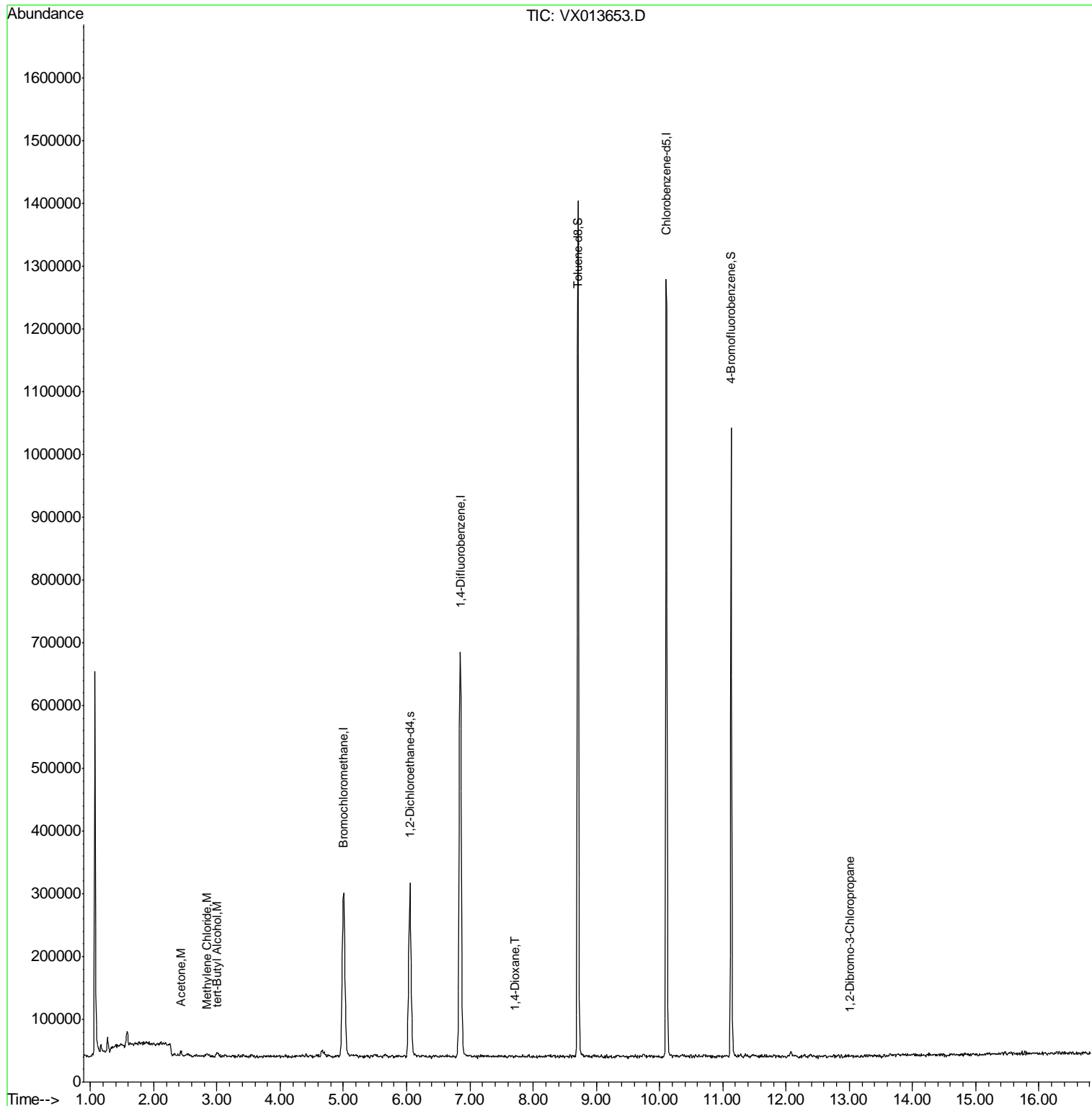
Target Compounds	R.T.	QIon	Response	Conc	Units	Ovalue
15) Acetone	2.44	58	2085	1.438	ug/l	85
18) Methylene Chloride	2.85	84	2706	0.321	ug/l #	74
23) tert-Butyl Alcohol	3.01	59	4456	1.934	ug/l #	99
45) 1,4-Dioxane	7.72	88	157	0.705	ug/l #	1
88) 1,2-Dibromo-3-Chloropropan	13.01	75	630	0.221	ug/l #	43

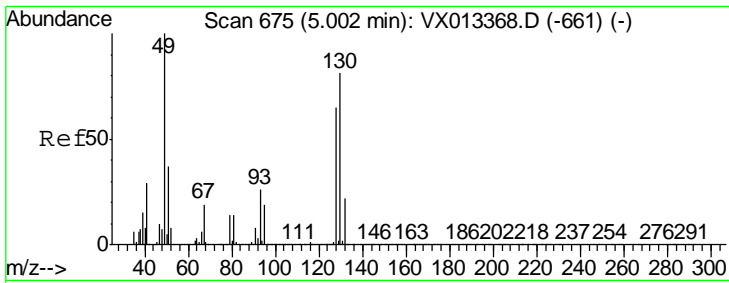
(#) = qualifier out of range (m) = manual integration (+) = signals summed

Data Path : Z:\VOASRV\HPCHEM1\MSVOA X\DATA\VX112719\
 Data File : VX013653.D
 Acq On : 27 Nov 2019 15:37
 Operator : JC/SP
 Sample : VX1127WBL02
 Misc : 5.0mL/MSVOA X/WATER
 ALS Vial : 14 Sample Multiplier: 1

Instrument :
 MSVOA_X
 ClientSampled :
 VX1127WBL02

Quant Time: Nov 28 00:34:12 2019
 Quant Method : Z:\VOASRV\HPCHEM1\MSVOA X\METHOD\624X111119W.M
 Quant Title : METHOD 624 VOLATILE ORGANIC ANALYSIS
 QLast Update : Tue Nov 12 01:16:13 2019
 Response via : Initial Calibration

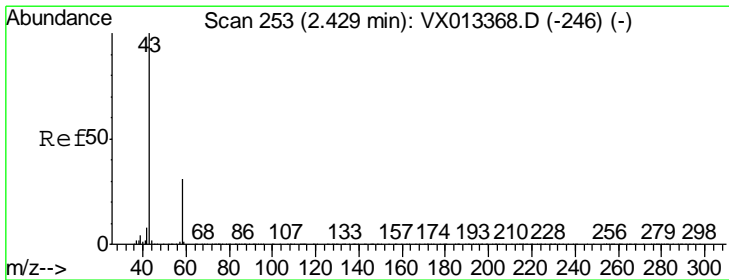
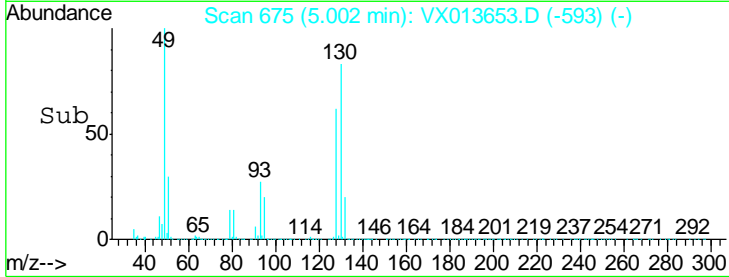
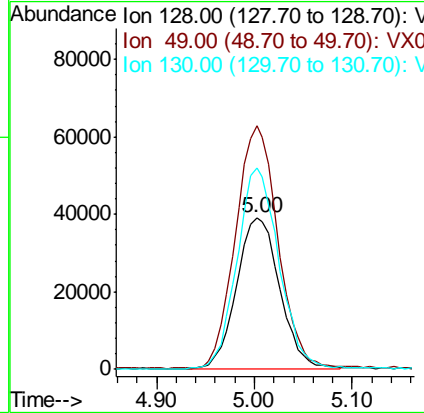
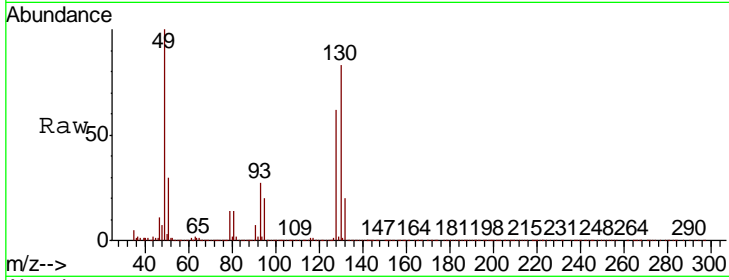




#1
 Bromochloromethane
 Concen: 30.000 ug/l
 RT: 5.00 min Scan# 675
 Delta R.T. -0.00 min
 Lab File: VX013653.D
 Acq: 27 Nov 2019 15:37

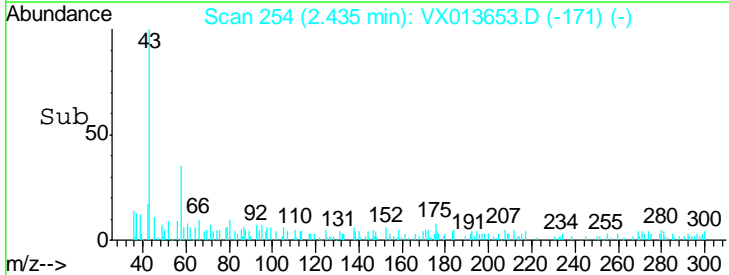
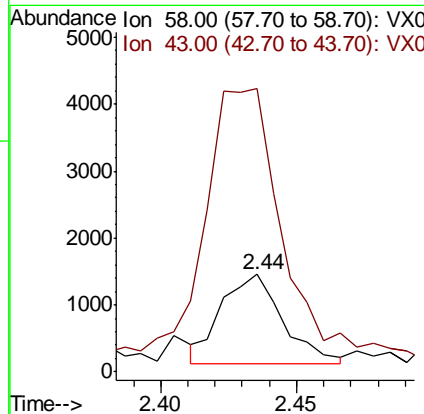
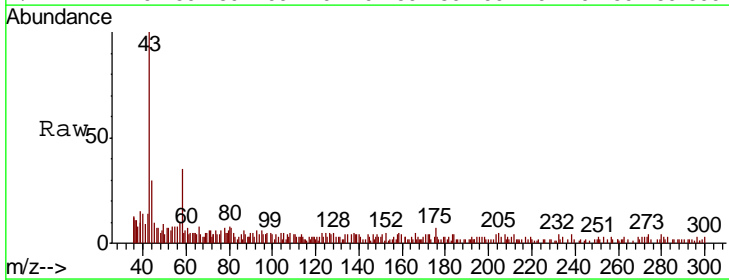
Instrument :
 MSVOA_X
 ClientSampled :
 VX1127WBL02

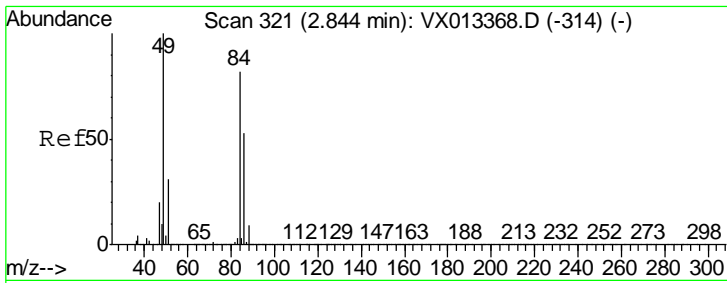
Tgt Ion	Resp	Lower	Upper
128	120278		
Ion Ratio			
128	100		
49	156.8	0.0	388.3
130	128.5	0.0	318.5



#15
 Acetone
 Concen: 1.438 ug/l
 RT: 2.44 min Scan# 254
 Delta R.T. 0.01 min
 Lab File: VX013653.D
 Acq: 27 Nov 2019 15:37

Tgt Ion	Resp	Lower	Upper
58	2085		
Ion Ratio			
58	100		
43	295.3	261.4	392.2

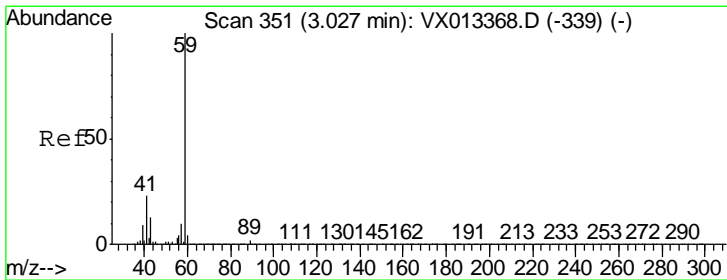
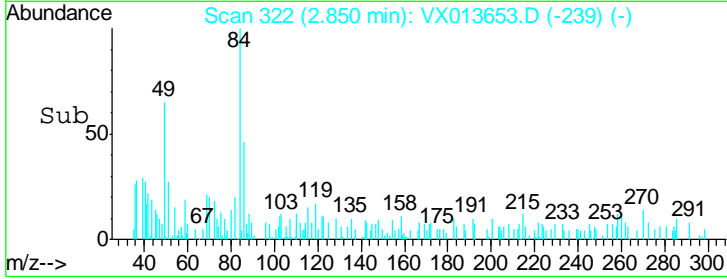
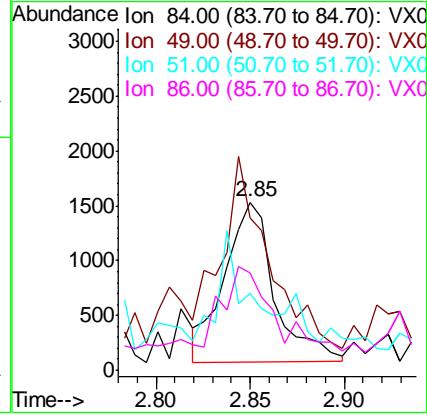
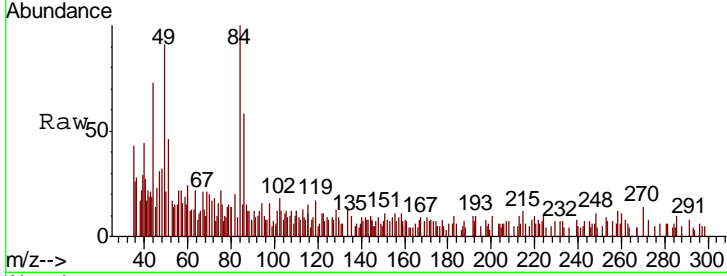




#18
 Methylene Chloride
 Concen: 0.321 ug/l
 RT: 2.85 min Scan# 322
 Delta R.T. 0.01 min
 Lab File: VX013653.D
 Acq: 27 Nov 2019 15:37

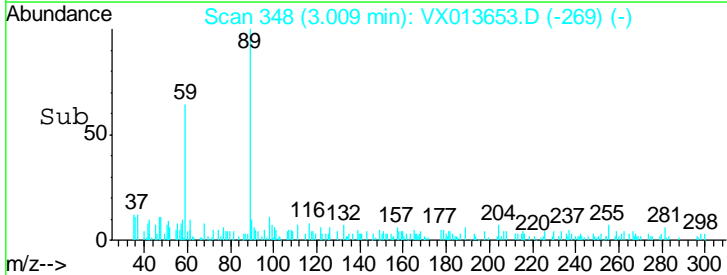
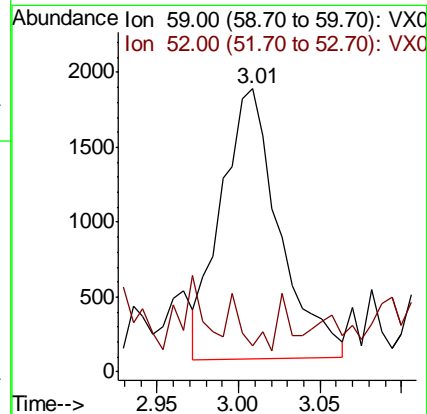
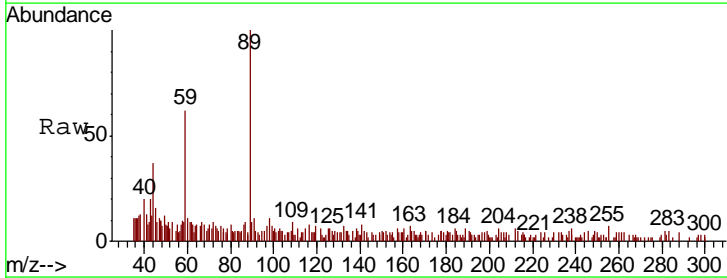
Instrument :
 MSVOA_X
 ClientSampleId :
 VX1127WBL02

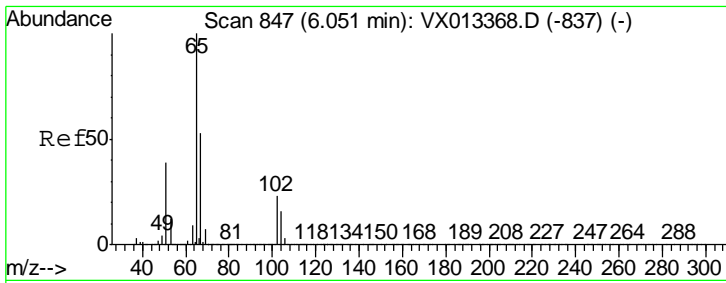
Tgt Ion	Resp	Lower	Upper
84	2706		
49	85.3	96.8	145.2#
51	30.7	30.0	45.0
86	46.1	51.7	77.5#



#23
 tert-Butyl Alcohol
 Concen: 1.934 ug/l
 RT: 3.01 min Scan# 348
 Delta R.T. -0.02 min
 Lab File: VX013653.D
 Acq: 27 Nov 2019 15:37

Tgt Ion	Resp	Lower	Upper
59	4456		
52	1.7	0.1	0.1#

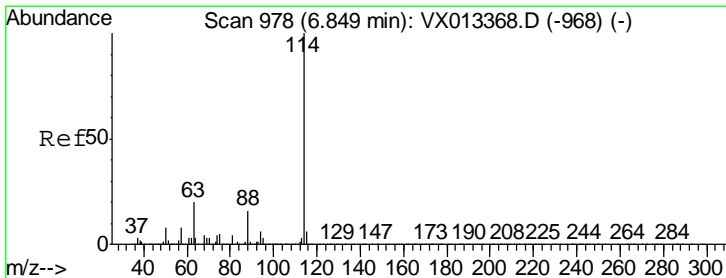
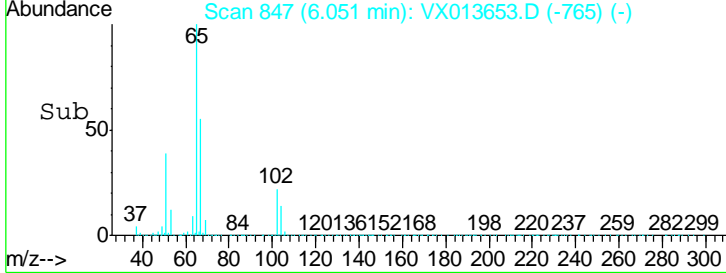
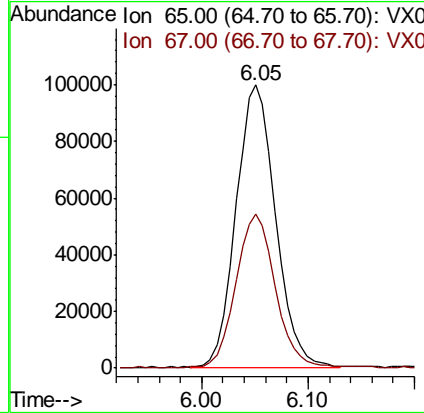
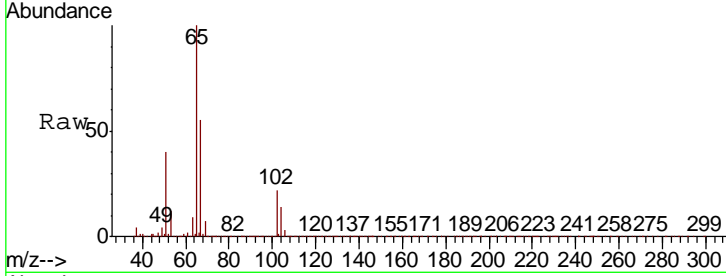




#27
 1,2-Dichloroethane-d4
 Concen: 29.353 ug/l
 RT: 6.05 min Scan# 847
 Delta R.T. -0.00 min
 Lab File: VX013653.D
 Acq: 27 Nov 2019 15:37

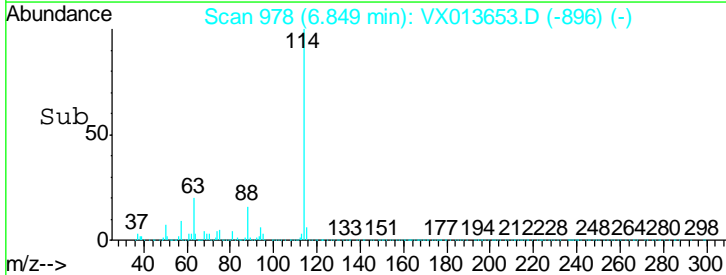
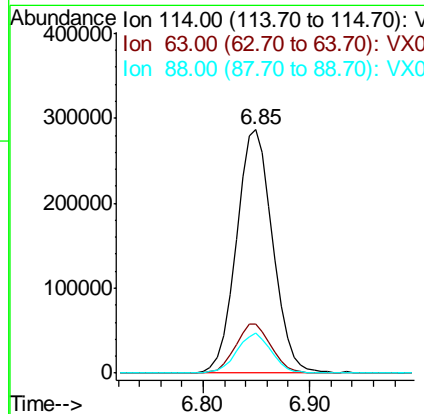
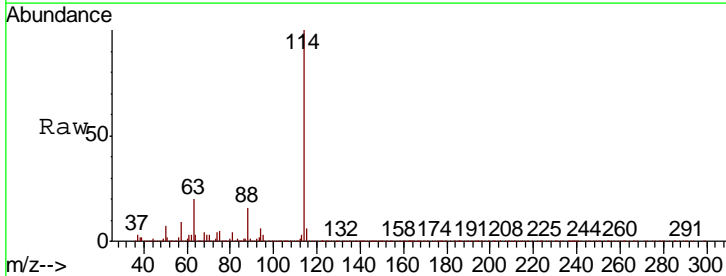
Instrument :
 MSVOA_X
ClientSampled :
 VX1127WBL02

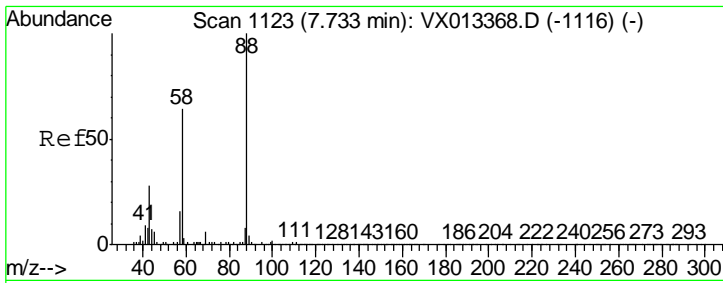
Tgt Ion	Resp	Lower	Upper
65	100		
67	53.9	41.0	61.6



#28
 1,4-Difluorobenzene
 Concen: 30.000 ug/l
 RT: 6.85 min Scan# 978
 Delta R.T. -0.00 min
 Lab File: VX013653.D
 Acq: 27 Nov 2019 15:37

Tgt Ion	Resp	Lower	Upper
114	100		
63	19.8	16.1	24.1
88	15.9	12.3	18.5

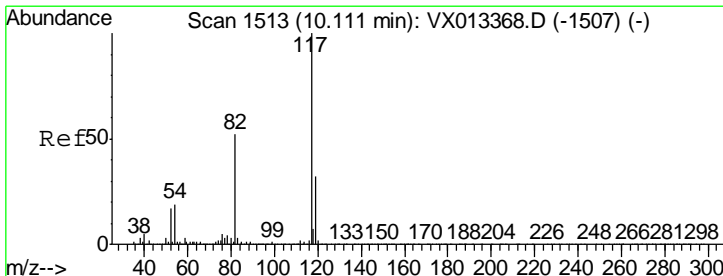
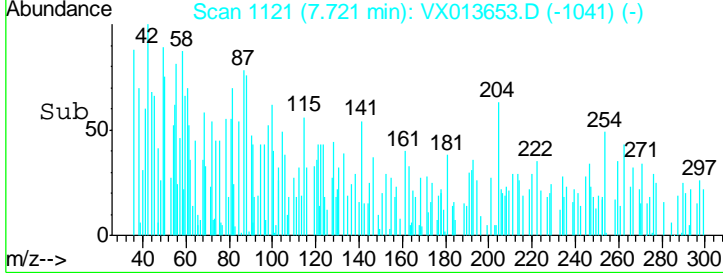
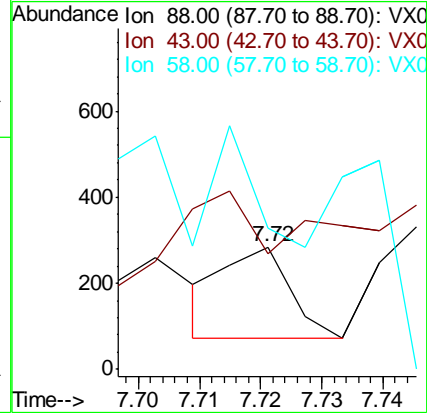
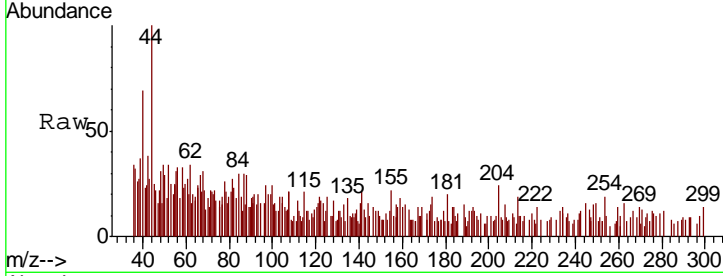




#45
 1,4-Dioxane
 Concen: 0.705 ug/l
 RT: 7.72 min Scan# 1121
 Delta R.T. -0.01 min
 Lab File: VX013653.D
 Acq: 27 Nov 2019 15:37

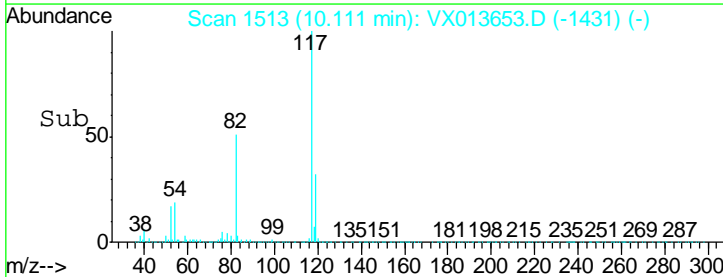
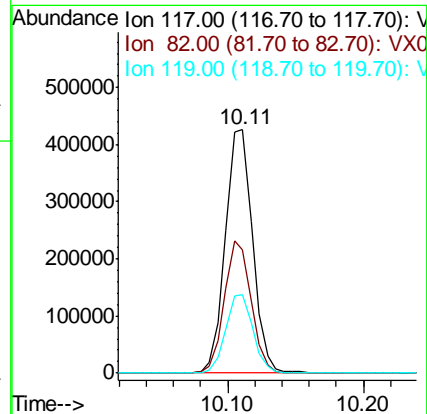
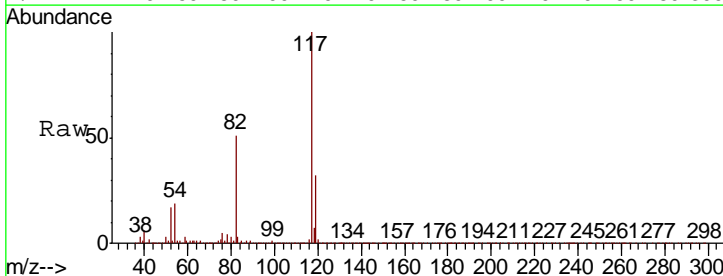
Instrument :
 MSVOA_X
 ClientSampled :
 VX1127WBL02

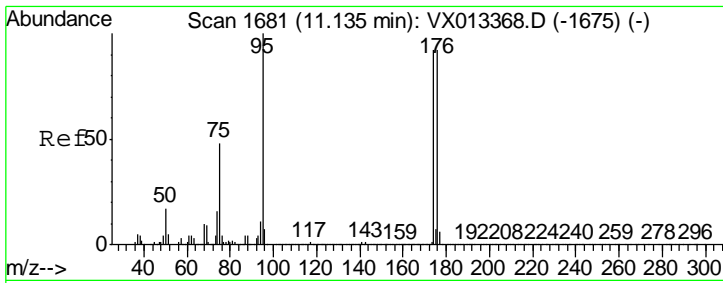
Tgt Ion	Resp	Lower	Upper
88	157		
43	200.6	26.1	39.1#
58	103.2	55.8	83.8#



#57
 Chlorobenzene-d5
 Concen: 30.000 ug/l
 RT: 10.11 min Scan# 1513
 Delta R.T. -0.00 min
 Lab File: VX013653.D
 Acq: 27 Nov 2019 15:37

Tgt Ion	Resp	Lower	Upper
117	594142		
82	53.0	43.7	65.5
119	32.3	25.5	38.3

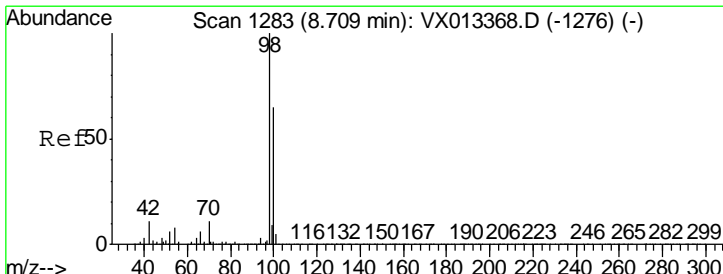
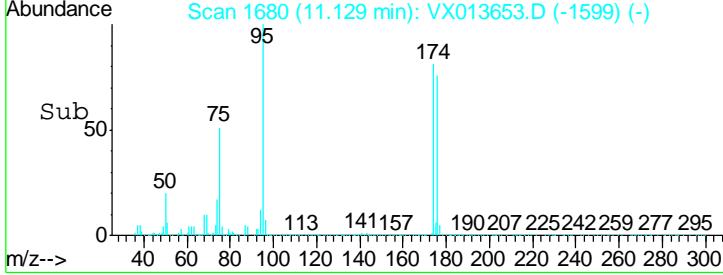
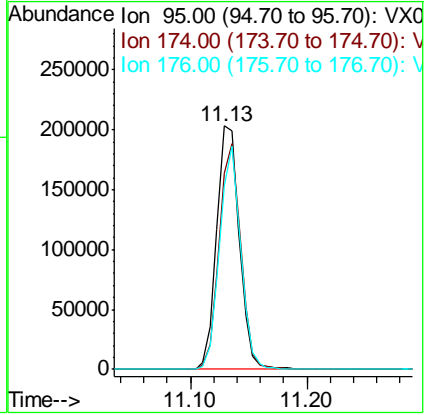
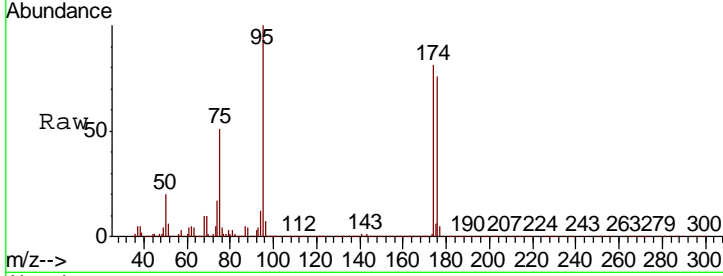




#60
 4-Bromofluorobenzene
 Concen: 28.429 ug/l
 RT: 11.13 min Scan# 1680
 Delta R.T. -0.01 min
 Lab File: VX013653.D
 Acq: 27 Nov 2019 15:37

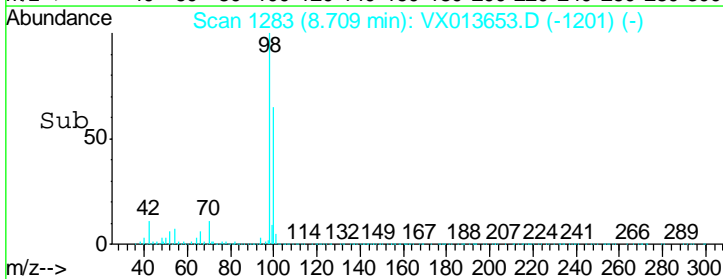
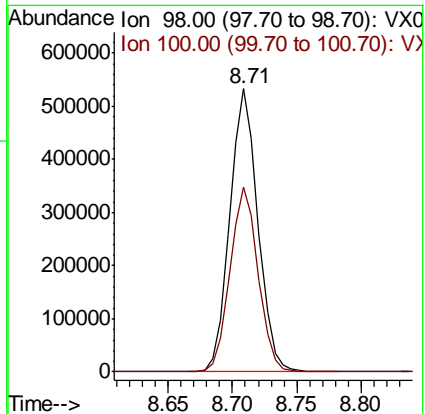
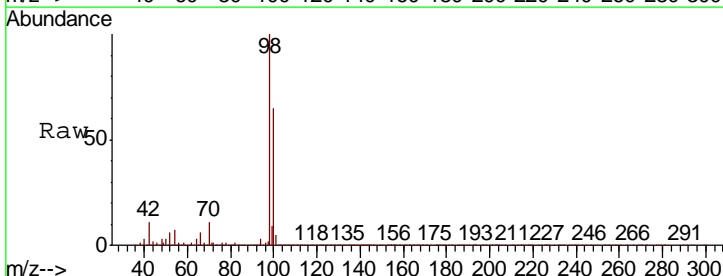
Instrument : MSVOA_X
 ClientSampled : VX1127WBL02

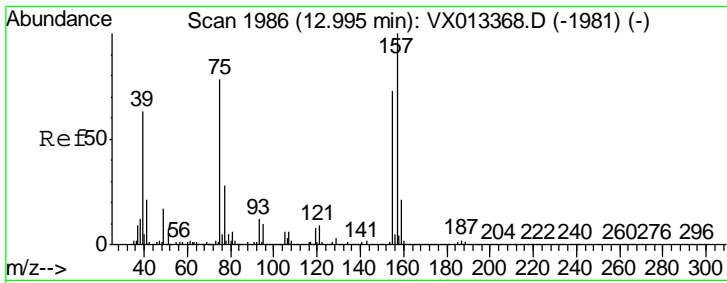
Tgt Ion	Resp	Lower	Upper
95	100		
174	88.6	70.2	105.2
176	85.5	68.3	102.5



#63
 Toluene-d8
 Concen: 30.211 ug/l
 RT: 8.71 min Scan# 1283
 Delta R.T. -0.00 min
 Lab File: VX013653.D
 Acq: 27 Nov 2019 15:37

Tgt Ion	Resp	Lower	Upper
98	100		
100	65.2	52.5	78.7





#88
 1,2-Dibromo-3-Chloropropane
 Concen: 0.221 ug/l
 RT: 13.01 min Scan# 1989
 Delta R.T. 0.02 min
 Lab File: VX013653.D
 Acq: 27 Nov 2019 15:37

Instrument :
 MSVOA_X
 ClientSampleId :
 VX1127WBL02

Tot Ion	Ion	Ratio	Lower	Upper
75	75	100		
155	155	17.8	76.9	115.3#
157	157	82.1	101.2	151.8#

