

Data Path : Z:\voasrv\HPCHEM1\MSVOA_X\Data\VX112822\
 Data File : VX033097.D
 Acq On : 28 Nov 2022 18:10
 Operator : JC/MD
 Sample : N5763-01 40X
 Misc : 5.0mL/MSVOA_X/WATER
 ALS Vial : 19 Sample Multiplier: 1

Instrument :
 MSVOA_X
ClientSampleId :
 DSN-001-SEWER-OUTLET-001

Quant Time: Nov 29 03:45:19 2022
 Quant Method : Z:\voasrv\HPCHEM1\MSVOA_X\Method\624X111022W.M
 Quant Title : METHOD 624 VOLATILE ORGANIC ANALYSIS
 QLast Update : Fri Nov 11 05:24:06 2022
 Response via : Initial Calibration

Compound	R.T.	QIon	Response	Conc	Units	Dev(Min)

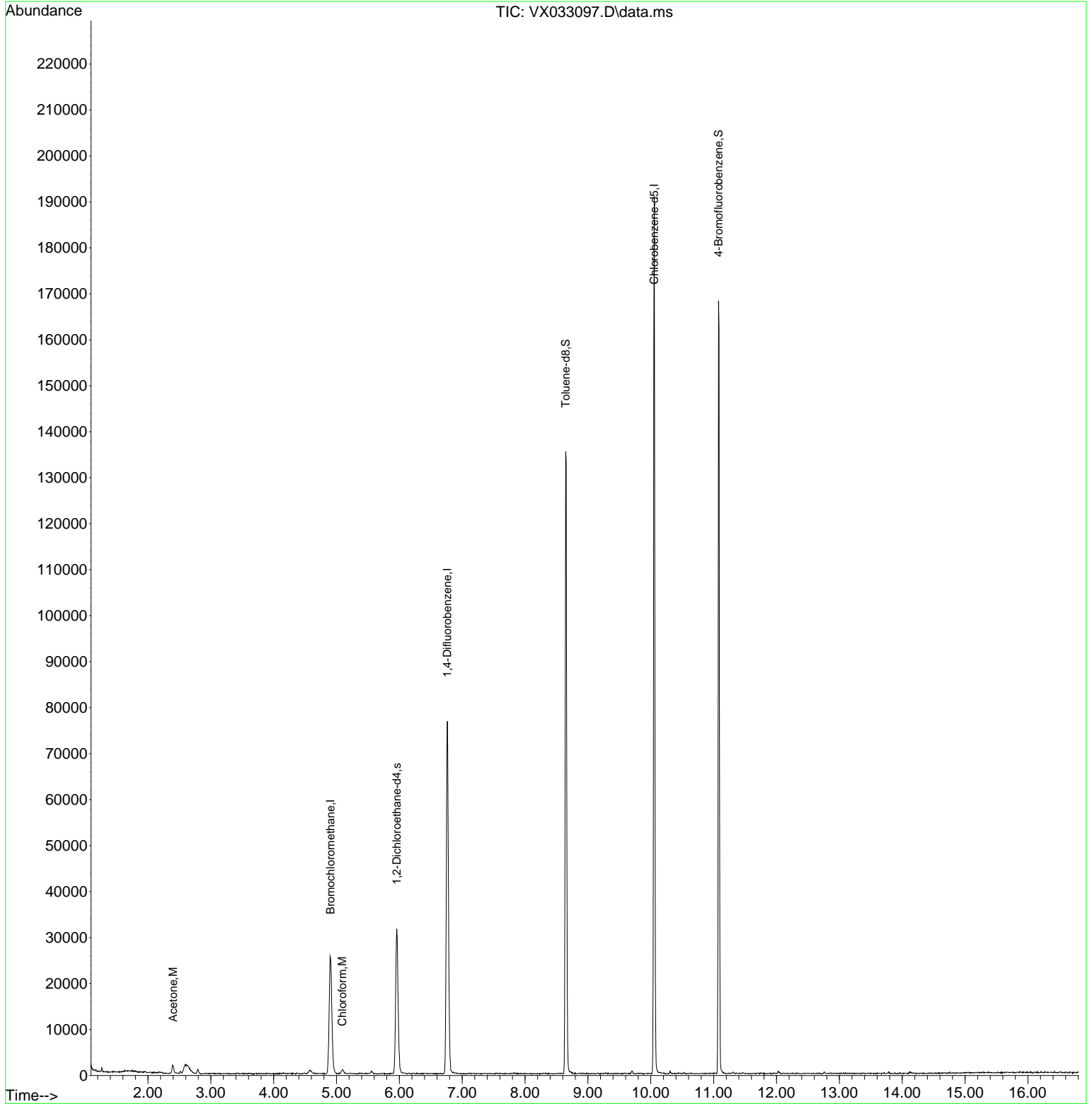
Internal Standards						
1) Bromochloromethane	4.903	128	11227	30.000	ug/l	0.00
28) 1,4-Difluorobenzene	6.763	114	78496	30.000	ug/l	0.00
57) Chlorobenzene-d5	10.055	117	83825	30.000	ug/l	0.00
System Monitoring Compounds						
27) 1,2-Dichloroethane-d4	5.958	65	32481	29.989	ug/l	0.00
Spiked Amount	30.000	Range 91 - 110	Recovery	=	99.967%	
60) 4-Bromofluorobenzene	11.079	95	42735	26.652	ug/l	0.00
Spiked Amount	30.000	Range 63 - 112	Recovery	=	88.833%	
63) Toluene-d8	8.647	98	81428	28.784	ug/l	0.00
Spiked Amount	30.000	Range 91 - 112	Recovery	=	95.933%	
Target Compounds						
						Qvalue
15) Acetone	2.398	58	733	4.860	ug/l	82
25) Chloroform	5.092	83	1191	0.489	ug/l	85

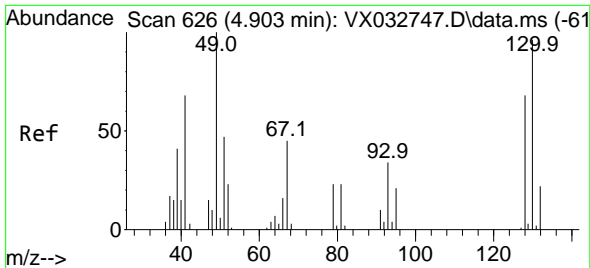
(#) = qualifier out of range (m) = manual integration (+) = signals summed

Data Path : Z:\voasrv\HPCHEM1\MSVOA_X\Data\VX112822\
 Data File : VX033097.D
 Acq On : 28 Nov 2022 18:10
 Operator : JC/MD
 Sample : N5763-01 40X
 Misc : 5.0mL/MSVOA_X/WATER
 ALS Vial : 19 Sample Multiplier: 1

Instrument :
 MSVOA_X
 ClientSampleId :
 DSN-001-SEWER-OUTLET-001

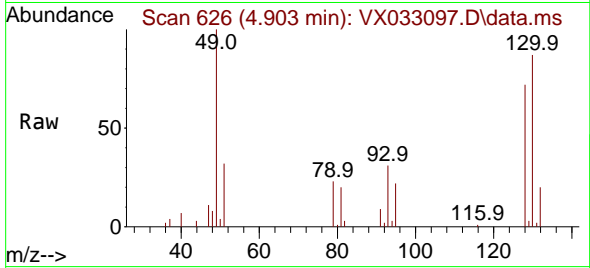
Quant Time: Nov 29 03:45:19 2022
 Quant Method : Z:\voasrv\HPCHEM1\MSVOA_X\Method\624X111022W.M
 Quant Title : METHOD 624 VOLATILE ORGANIC ANALYSIS
 QLast Update : Fri Nov 11 05:24:06 2022
 Response via : Initial Calibration



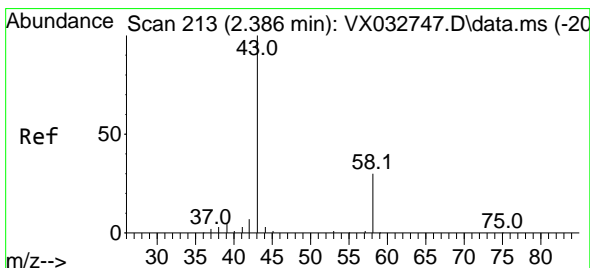
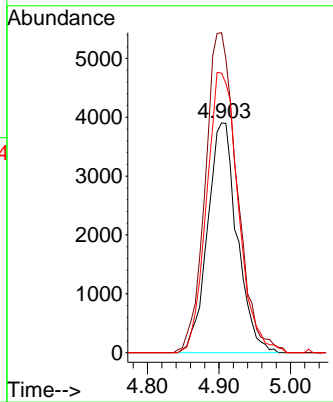
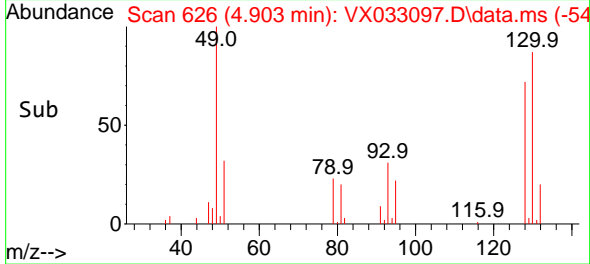


#1
 Bromochloromethane
 Concen: 30.000 ug/l
 RT: 4.903 min Scan# 61
 Delta R.T. 0.000 min
 Lab File: VX033097.D
 Acq: 28 Nov 2022 18:10

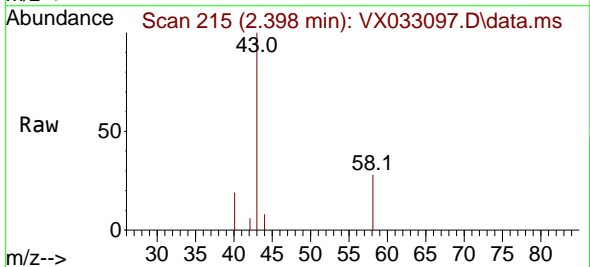
Instrument : MSVOA_X
 ClientSampleId : DSN-001-SEWER-OUTLET-001



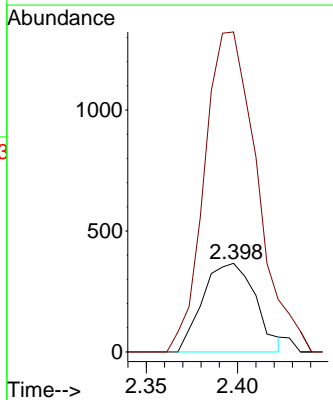
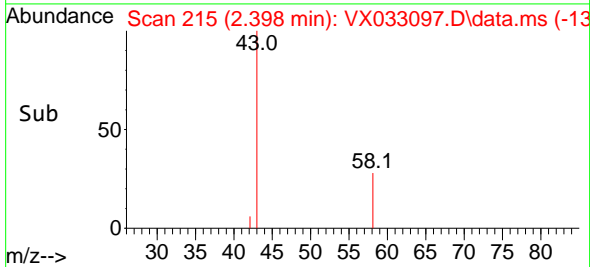
Tgt Ion:128 Resp: 11227
 Ion Ratio Lower Upper
 128 100
 49 149.3 0.0 293.0
 130 130.6 0.0 321.5

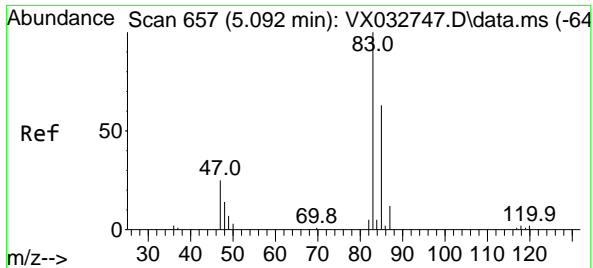


#15
 Acetone
 Concen: 4.860 ug/l
 RT: 2.398 min Scan# 215
 Delta R.T. 0.012 min
 Lab File: VX033097.D
 Acq: 28 Nov 2022 18:10



Tgt Ion: 58 Resp: 733
 Ion Ratio Lower Upper
 58 100
 43 339.1 242.6 364.0

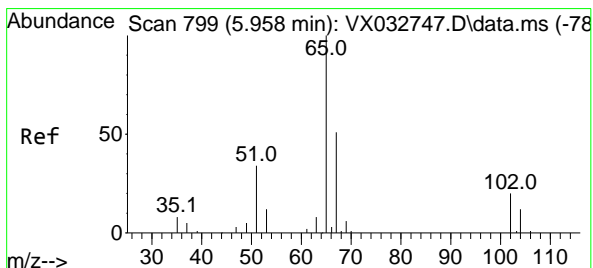
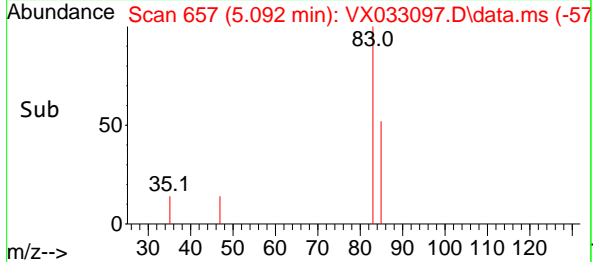
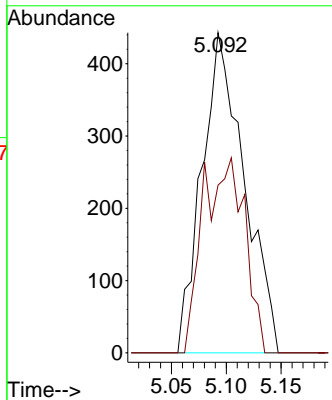
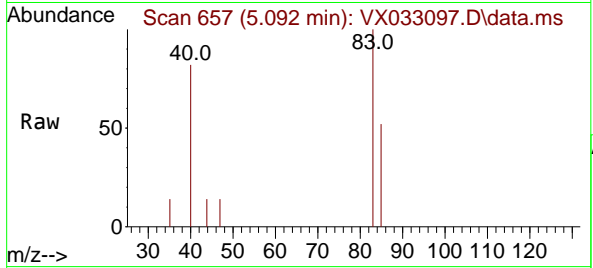




#25
 Chloroform
 Concen: 0.489 ug/l
 RT: 5.092 min Scan# 611
 Delta R.T. -0.000 min
 Lab File: VX033097.D
 Acq: 28 Nov 2022 18:10

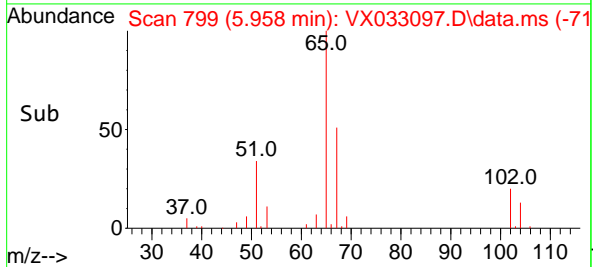
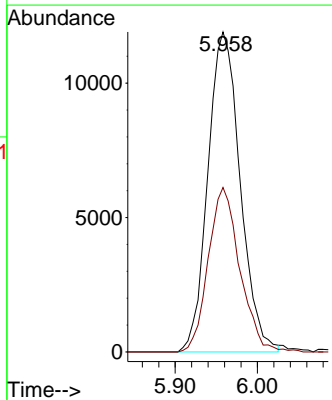
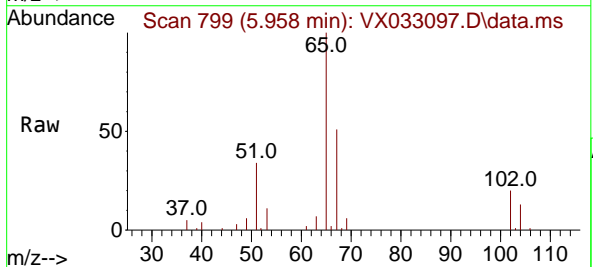
Instrument : MSVOA_X
 ClientSampleId : DSN-001-SEWER-OUTLET-001

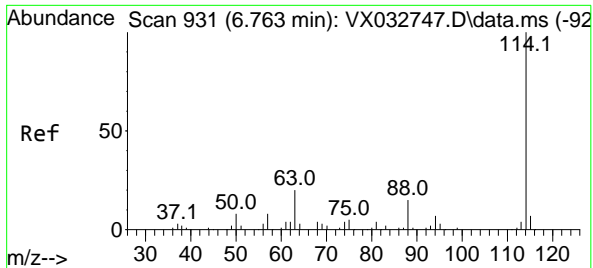
Tgt Ion: 83 Resp: 1191
 Ion Ratio Lower Upper
 83 100
 85 52.4 51.4 77.0



#27
 1,2-Dichloroethane-d4
 Concen: 29.989 ug/l
 RT: 5.958 min Scan# 799
 Delta R.T. -0.000 min
 Lab File: VX033097.D
 Acq: 28 Nov 2022 18:10

Tgt Ion: 65 Resp: 32481
 Ion Ratio Lower Upper
 65 100
 67 49.4 41.8 62.6



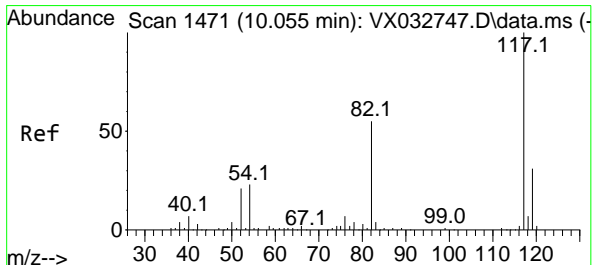
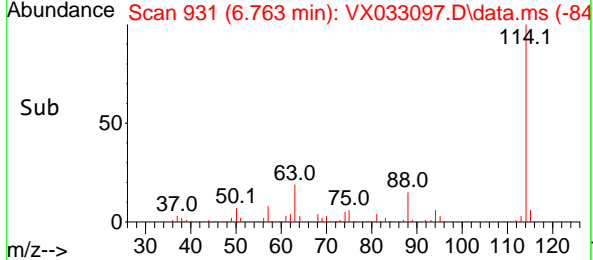
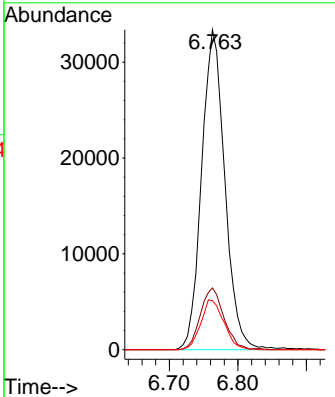
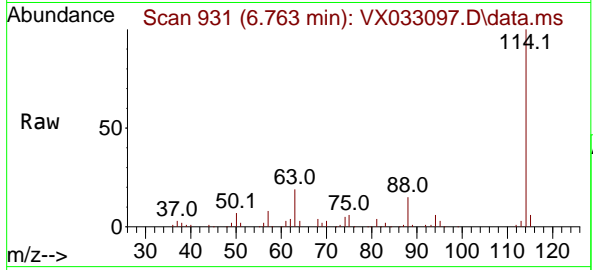


#28
 1,4-Difluorobenzene
 Concen: 30.000 ug/l
 RT: 6.763 min Scan# 91
 Delta R.T. -0.000 min
 Lab File: VX033097.D
 Acq: 28 Nov 2022 18:10

Instrument : MSVOA_X
 ClientSampleId : DSN-001-SEWER-OUTLET-001

Tgt Ion:114 Resp: 78496

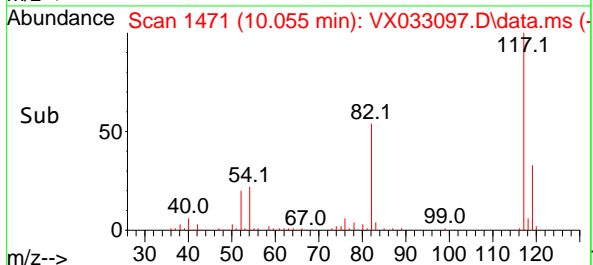
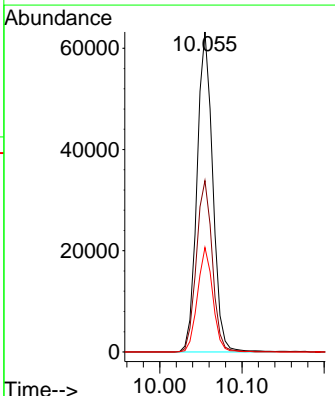
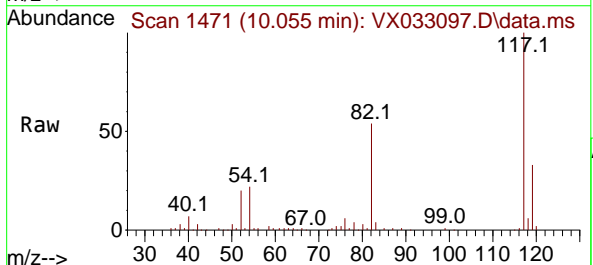
Ion	Ratio	Lower	Upper
114	100		
63	19.5	13.6	20.4
88	15.5	11.8	17.6

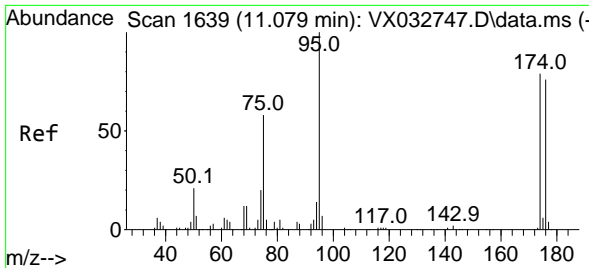


#57
 Chlorobenzene-d5
 Concen: 30.000 ug/l
 RT: 10.055 min Scan# 1471
 Delta R.T. -0.000 min
 Lab File: VX033097.D
 Acq: 28 Nov 2022 18:10

Tgt Ion:117 Resp: 83825

Ion	Ratio	Lower	Upper
117	100		
82	54.5	40.0	60.0
119	31.8	26.0	39.0

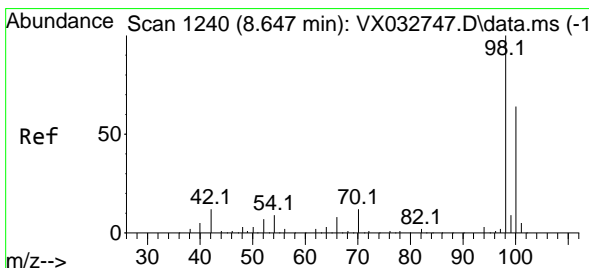
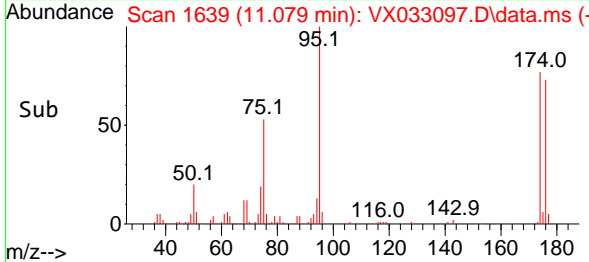
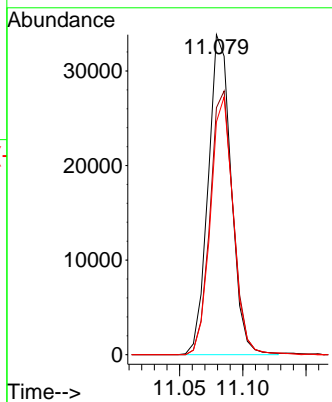
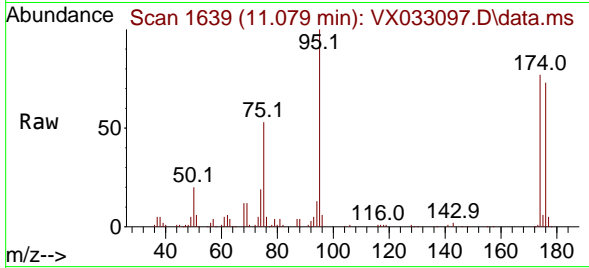




#60
 4-Bromofluorobenzene
 Concen: 26.652 ug/l
 RT: 11.079 min Scan# 1639
 Delta R.T. -0.000 min
 Lab File: VX033097.D
 Acq: 28 Nov 2022 18:10

Instrument : MSVOA_X
 ClientSampleId : DSN-001-SEWER-OUTLET-001

Tgt Ion	Resp	Lower	Upper
95	42735	100	100
174	83.3	68.2	102.2
176	80.2	68.1	102.1



#63
 Toluene-d8
 Concen: 28.784 ug/l
 RT: 8.647 min Scan# 1240
 Delta R.T. -0.000 min
 Lab File: VX033097.D
 Acq: 28 Nov 2022 18:10

Tgt Ion	Resp	Lower	Upper
98	81428	100	100
100	64.5	53.8	80.8

