

Data Path : Z:\voasrv\HPCHEM1\MSVOA_X\Data\VX112921\
 Data File : VX025371.D
 Acq On : 29 Nov 2021 15:48
 Operator : JC/MD
 Sample : M4816-02
 Misc : 5.0mL/MSVOA_X/WATER
 ALS Vial : 15 Sample Multiplier: 1

Instrument :
 MSVOA_X
 ClientSampleId :
 TB-01-112221

Quant Time: Nov 29 16:15:04 2021
 Quant Method : Z:\voasrv\HPCHEM1\MSVOA_X\Method\82X111721W.M
 Quant Title : SW846 8260
 QLast Update : Wed Nov 17 15:36:16 2021
 Response via : Initial Calibration

Compound	R.T.	QIon	Response	Conc	Units	Dev(Min)

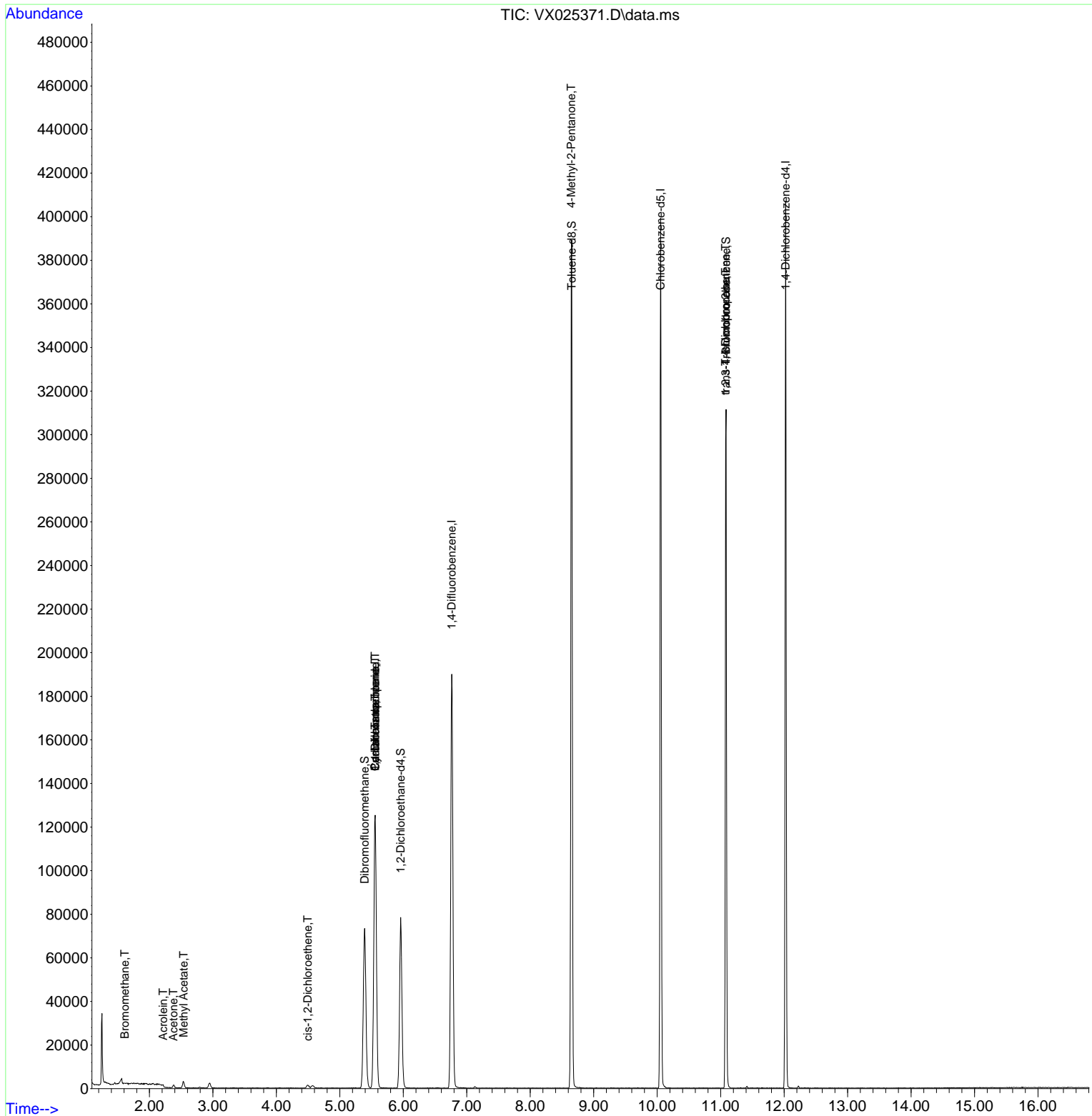
Internal Standards						
1) Pentafluorobenzene	5.556	168	130071	50.000	ug/l	0.00
34) 1,4-Difluorobenzene	6.763	114	206723	50.000	ug/l	0.00
63) Chlorobenzene-d5	10.055	117	186533	50.000	ug/l	0.00
72) 1,4-Dichlorobenzene-d4	12.024	152	84619	50.000	ug/l	0.00
System Monitoring Compounds						
33) 1,2-Dichloroethane-d4	5.958	65	69999	51.056	ug/l	0.00
Spiked Amount	50.000	Range 78 - 117	Recovery	=	102.120%	
35) Dibromofluoromethane	5.391	113	63114	49.759	ug/l	0.00
Spiked Amount	50.000	Range 75 - 124	Recovery	=	99.520%	
50) Toluene-d8	8.653	98	237440	49.789	ug/l	0.00
Spiked Amount	50.000	Range 92 - 112	Recovery	=	99.580%	
62) 4-Bromofluorobenzene	11.085	95	83270	46.155	ug/l	0.00
Spiked Amount	50.000	Range 83 - 123	Recovery	=	92.300%	
Target Compounds						
						Qvalue
5) Bromomethane	1.611	94	227	0.344	ug/l #	78
11) Tert butyl alcohol	2.947	59	1492	Below Cal	#	72
13) Acrolein	2.215	56	19	0.302	ug/l #	1
16) Acetone	2.380	43	1439	1.889	ug/l	96
18) Methyl Acetate	2.538	43	871	0.358	ug/l #	52
27) cis-1,2-Dichloroethene	4.495	96	921	0.597	ug/l	94
31) Cyclohexane	5.556	56	2305	1.088	ug/l #	1
36) 1,1-Dichloropropene	5.556	75	8526	4.727	ug/l #	50
38) Carbon Tetrachloride	5.556	117	11961	6.021	ug/l #	16
51) 4-Methyl-2-Pentanone	8.647	43	1042	0.487	ug/l #	1
76) 1,2,3-Trichloropropane	11.079	75	40254	23.230	ug/l #	37
81) trans-1,4-Dichloro-2-b...	11.079	75	40254	58.521	ug/l #	9

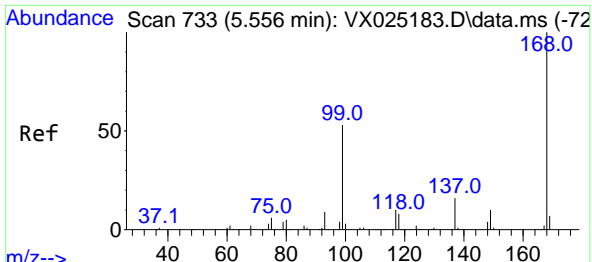
(#) = qualifier out of range (m) = manual integration (+) = signals summed

Data Path : Z:\voasrv\HPCHEM1\MSVOA_X\Data\VX112921\
 Data File : VX025371.D
 Acq On : 29 Nov 2021 15:48
 Operator : JC/MD
 Sample : M4816-02
 Misc : 5.0mL/MSVOA_X/WATER
 ALS Vial : 15 Sample Multiplier: 1

Instrument :
 MSVOA_X
 ClientSampleId :
 TB-01-112221

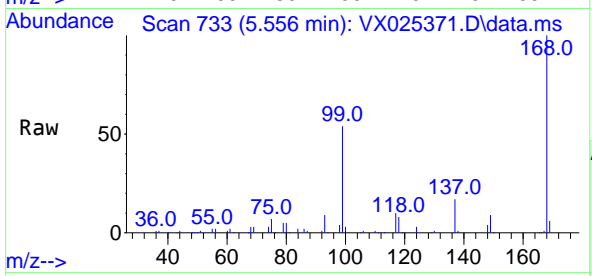
Quant Time: Nov 29 16:15:04 2021
 Quant Method : Z:\voasrv\HPCHEM1\MSVOA_X\Method\82X111721W.M
 Quant Title : SW846 8260
 QLast Update : Wed Nov 17 15:36:16 2021
 Response via : Initial Calibration



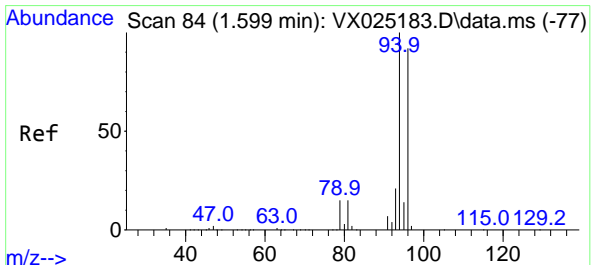
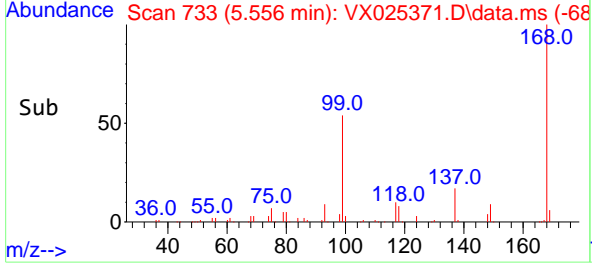
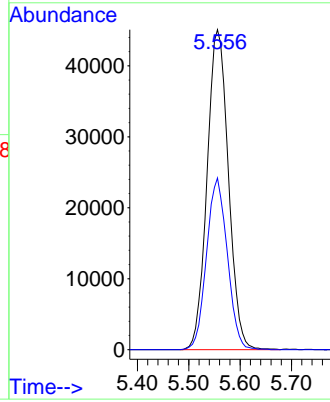


#1
 Pentafluorobenzene
 Concen: 50.000 ug/l
 RT: 5.556 min Scan# 71
 Delta R.T. -0.000 min
 Lab File: VX025371.D
 Acq: 29 Nov 2021 15:48

Instrument : MSVOA_X
 ClientSampleId : TB-01-112221

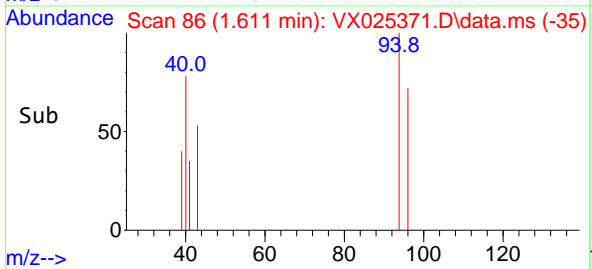
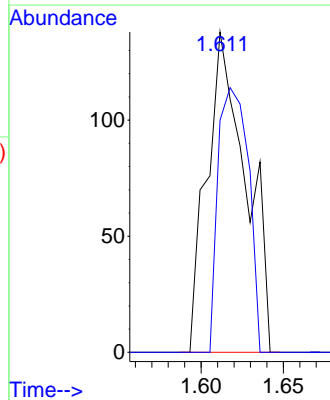
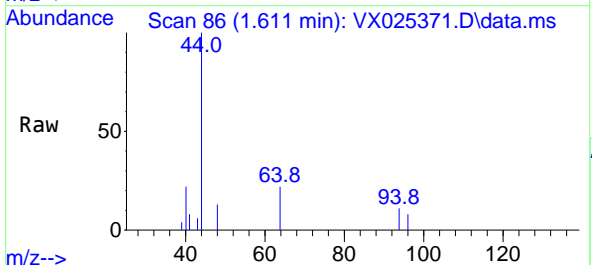


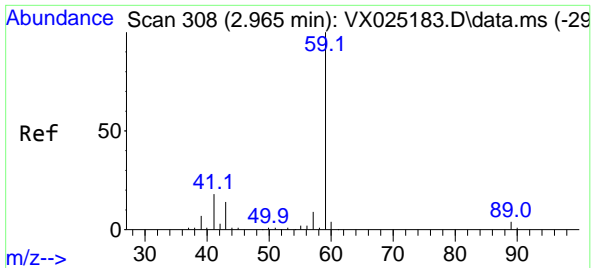
Tgt Ion:168 Resp: 130071
 Ion Ratio Lower Upper
 168 100
 99 53.6 46.4 69.6



#5
 Bromomethane
 Concen: 0.344 ug/l
 RT: 1.611 min Scan# 86
 Delta R.T. 0.012 min
 Lab File: VX025371.D
 Acq: 29 Nov 2021 15:48

Tgt Ion: 94 Resp: 227
 Ion Ratio Lower Upper
 94 100
 96 72.5 74.8 112.2#

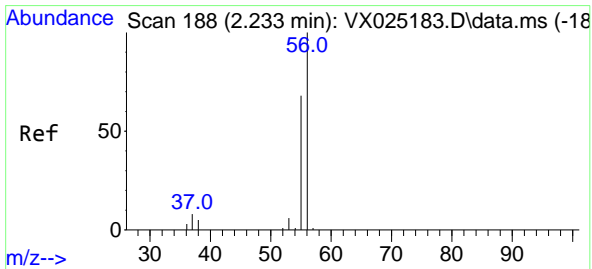
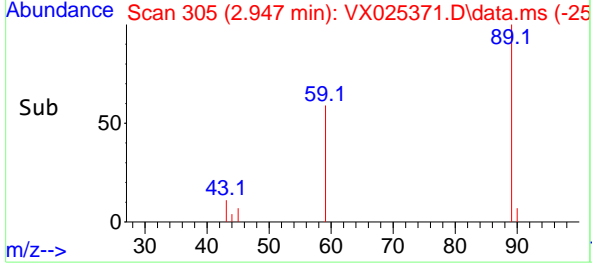
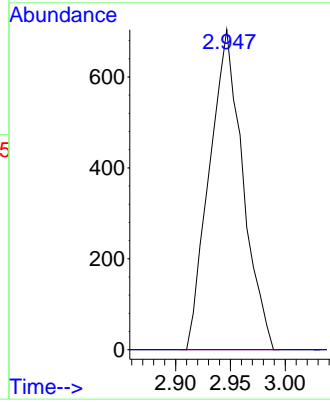
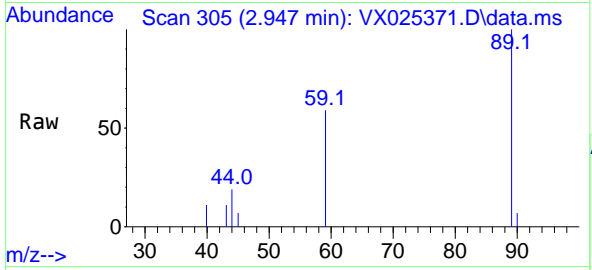




#11
 Tert butyl alcohol
 Concen: Below Cal
 RT: 2.947 min Scan# 30
 Delta R.T. -0.018 min
 Lab File: VX025371.D
 Acq: 29 Nov 2021 15:48

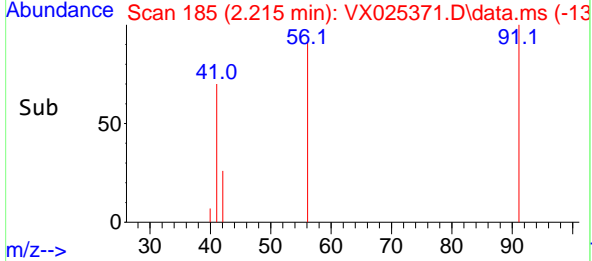
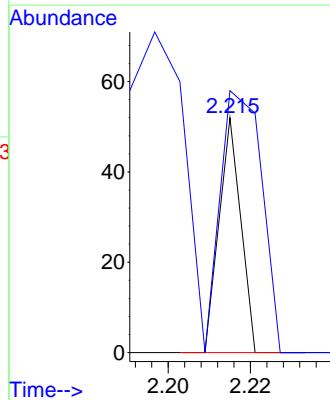
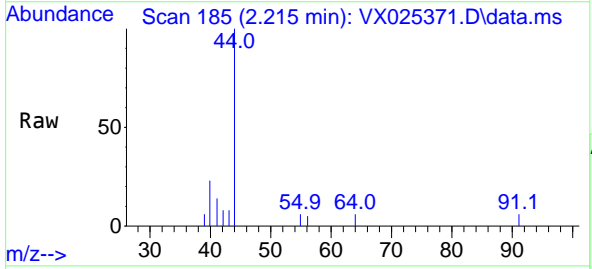
Instrument : MSVOA_X
 ClientSampleId : TB-01-112221

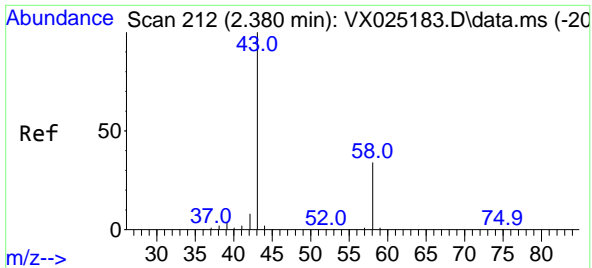
Tgt Ion: 59 Resp: 1492
 Ion Ratio Lower Upper
 59 100
 57 0.0 8.5 12.7#



#13
 Acrolein
 Concen: 0.302 ug/l
 RT: 2.215 min Scan# 185
 Delta R.T. -0.018 min
 Lab File: VX025371.D
 Acq: 29 Nov 2021 15:48

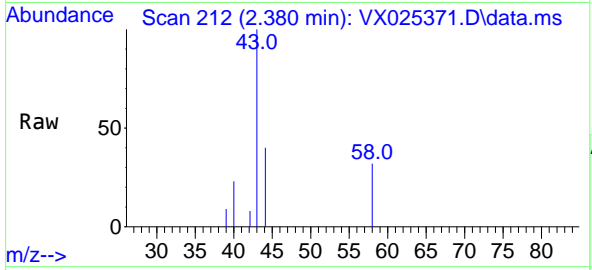
Tgt Ion: 56 Resp: 19
 Ion Ratio Lower Upper
 56 100
 55 215.8 58.6 87.8#



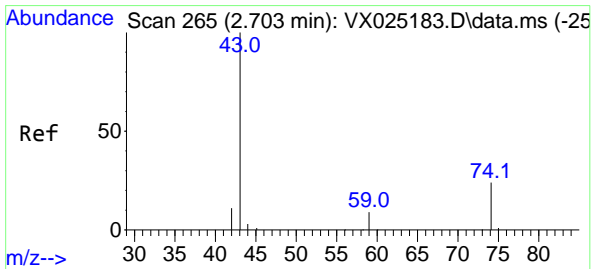
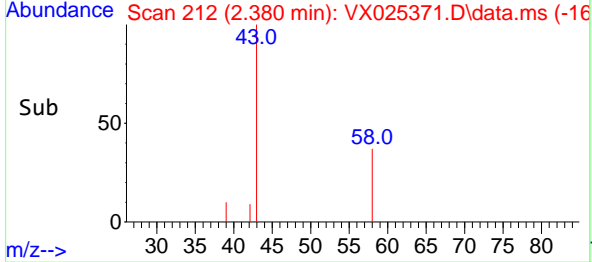
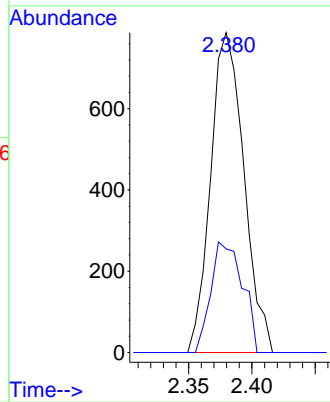


#16
 Acetone
 Concen: 1.889 ug/l
 RT: 2.380 min Scan# 212
 Delta R.T. -0.000 min
 Lab File: VX025371.D
 Acq: 29 Nov 2021 15:48

Instrument : MSVOA_X
 ClientSampleId : TB-01-112221

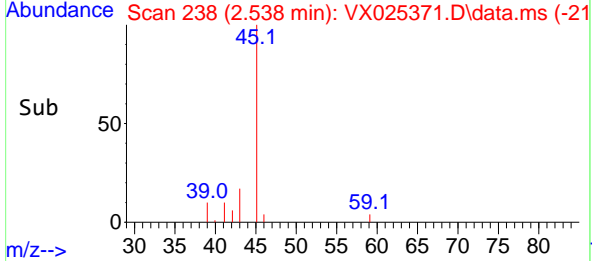
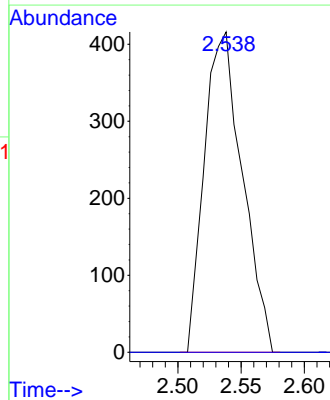
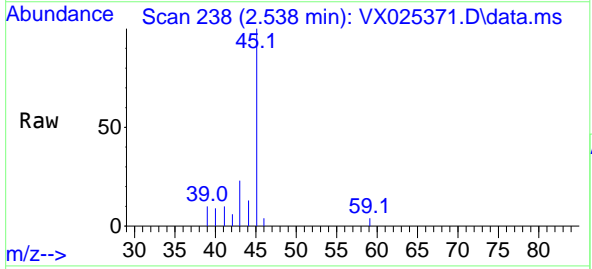


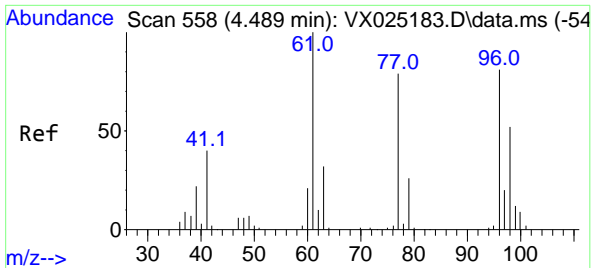
Tgt Ion: 43 Resp: 1439
 Ion Ratio Lower Upper
 43 100
 58 32.4 24.0 36.0



#18
 Methyl Acetate
 Concen: 0.358 ug/l
 RT: 2.538 min Scan# 238
 Delta R.T. -0.165 min
 Lab File: VX025371.D
 Acq: 29 Nov 2021 15:48

Tgt Ion: 43 Resp: 871
 Ion Ratio Lower Upper
 43 100
 74 0.0 19.0 28.6#



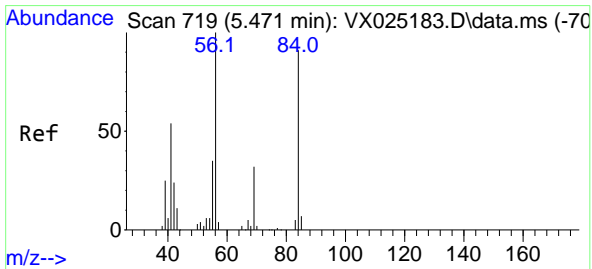
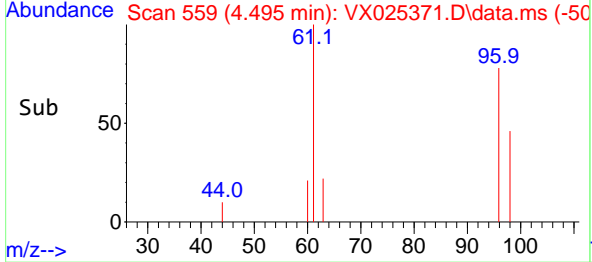
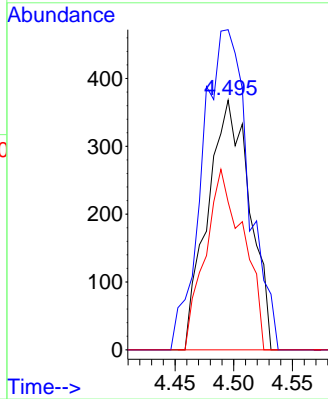
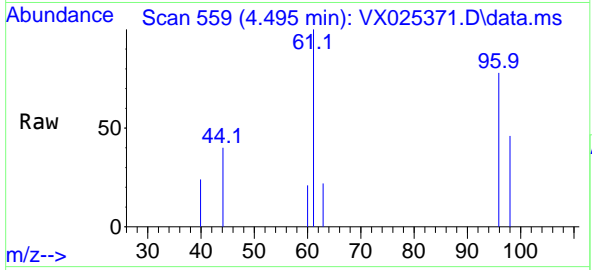


#27
 cis-1,2-Dichloroethene
 Concen: 0.597 ug/l
 RT: 4.495 min Scan# 511
 Delta R.T. 0.006 min
 Lab File: VX025371.D
 Acq: 29 Nov 2021 15:48

Instrument : MSVOA_X
 ClientSampleId : TB-01-112221

Tgt Ion: 96 Resp: 921

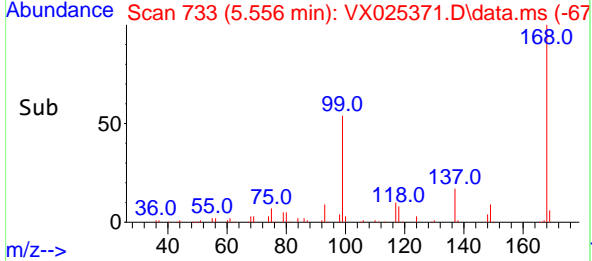
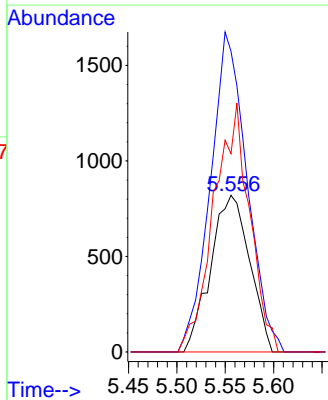
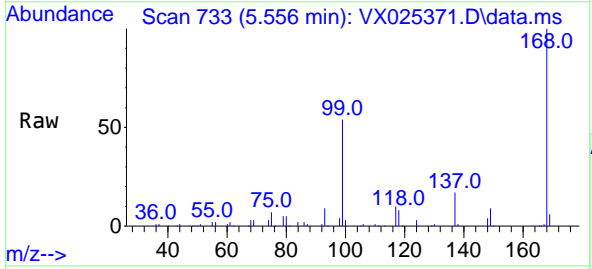
Ion	Ratio	Lower	Upper
96	100		
61	140.3	0.0	302.2
98	65.3	0.0	131.4

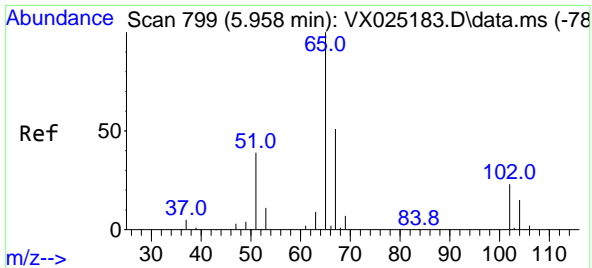


#31
 Cyclohexane
 Concen: 1.088 ug/l
 RT: 5.556 min Scan# 733
 Delta R.T. 0.085 min
 Lab File: VX025371.D
 Acq: 29 Nov 2021 15:48

Tgt Ion: 56 Resp: 2305

Ion	Ratio	Lower	Upper
56	100		
69	192.0	24.2	36.2#
84	126.6	71.5	107.3#

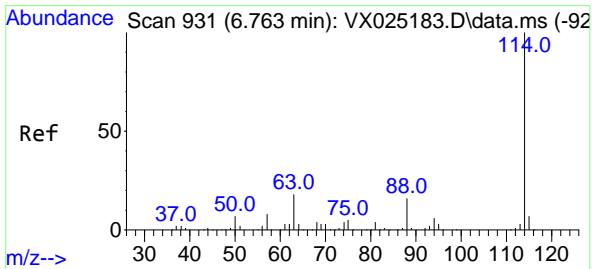
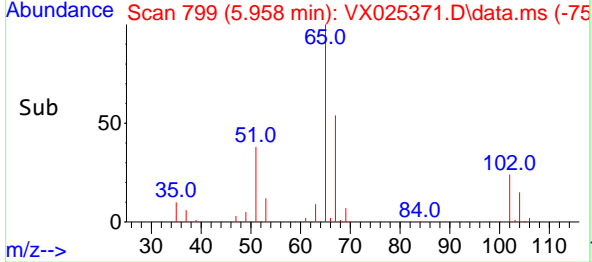
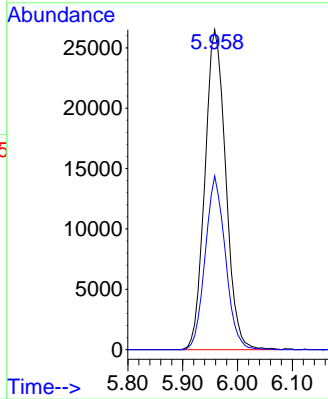
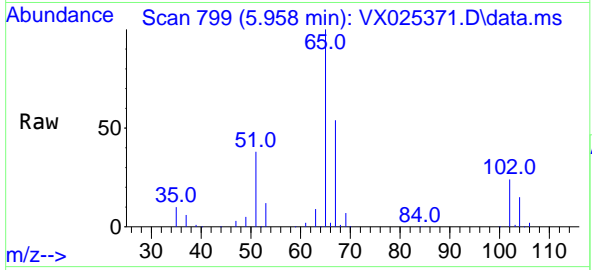




#33
 1,2-Dichloroethane-d4
 Concen: 51.056 ug/l
 RT: 5.958 min Scan# 799
 Delta R.T. 0.000 min
 Lab File: VX025371.D
 Acq: 29 Nov 2021 15:48

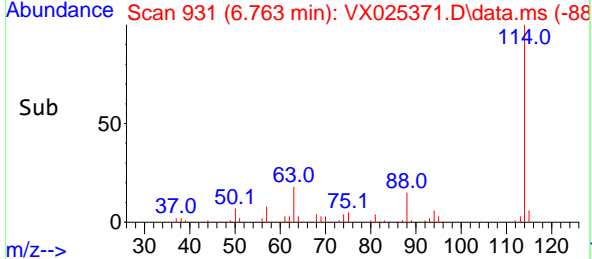
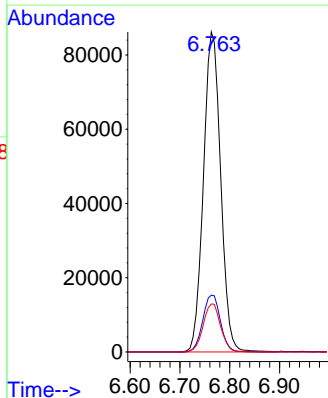
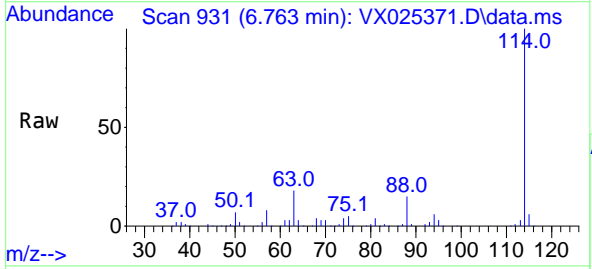
Instrument : MSVOA_X
 ClientSampleId : TB-01-112221

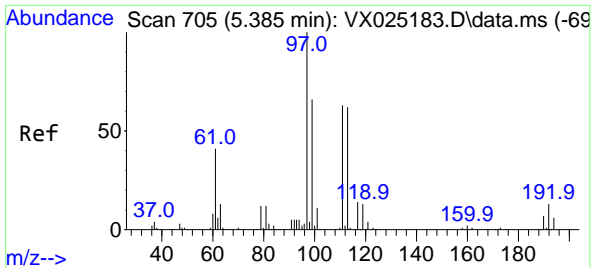
Tgt Ion: 65 Resp: 69999
 Ion Ratio Lower Upper
 65 100
 67 52.6 0.0 101.0



#34
 1,4-Difluorobenzene
 Concen: 50.000 ug/l
 RT: 6.763 min Scan# 931
 Delta R.T. -0.000 min
 Lab File: VX025371.D
 Acq: 29 Nov 2021 15:48

Tgt Ion: 114 Resp: 206723
 Ion Ratio Lower Upper
 114 100
 63 17.8 0.0 41.0
 88 15.0 0.0 34.8



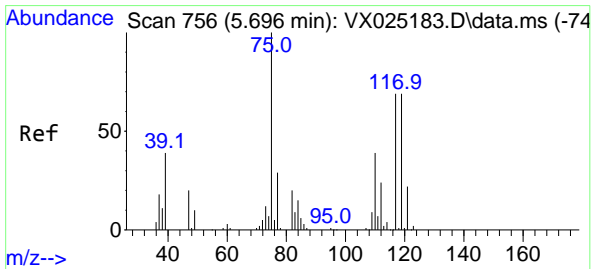
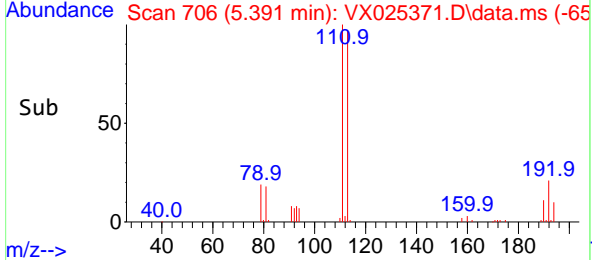
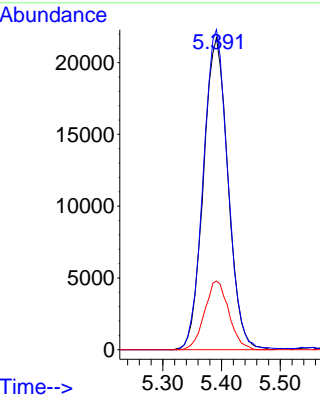
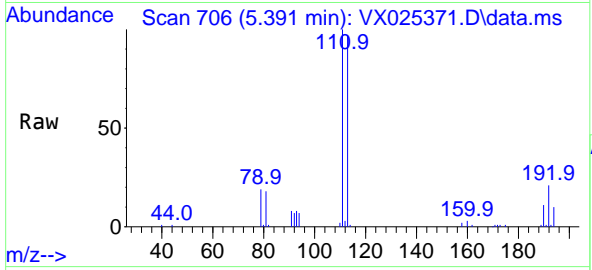


#35
 Dibromofluoromethane
 Concen: 49.759 ug/l
 RT: 5.391 min Scan# 705
 Delta R.T. 0.006 min
 Lab File: VX025371.D
 Acq: 29 Nov 2021 15:48

Instrument : MSVOA_X
 ClientSampleId : TB-01-112221

Tgt Ion:113 Resp: 63114

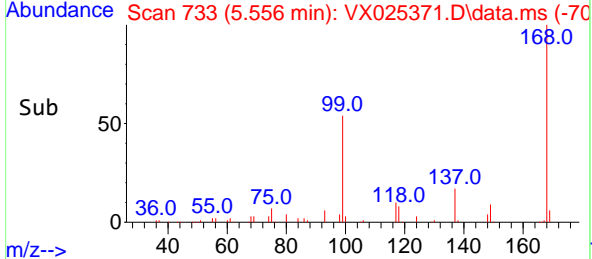
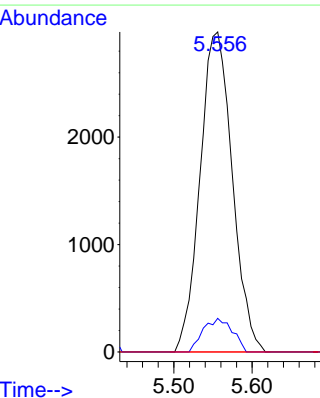
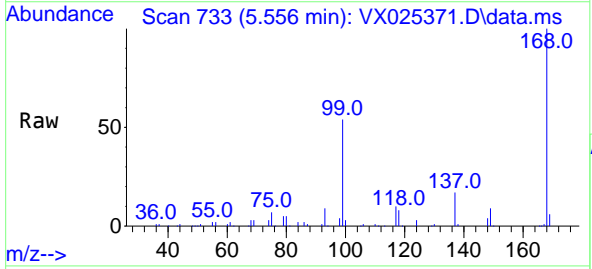
Ion	Ratio	Lower	Upper
113	100		
111	102.5	82.1	123.1
192	21.7	15.6	23.4

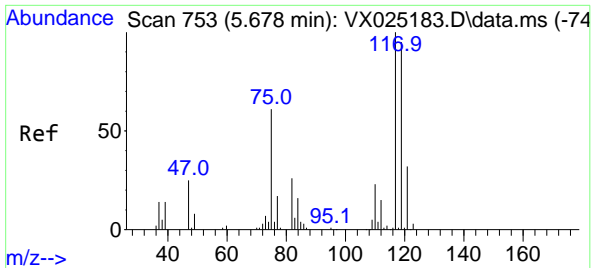


#36
 1,1-Dichloropropene
 Concen: 4.727 ug/l
 RT: 5.556 min Scan# 733
 Delta R.T. -0.140 min
 Lab File: VX025371.D
 Acq: 29 Nov 2021 15:48

Tgt Ion: 75 Resp: 8526

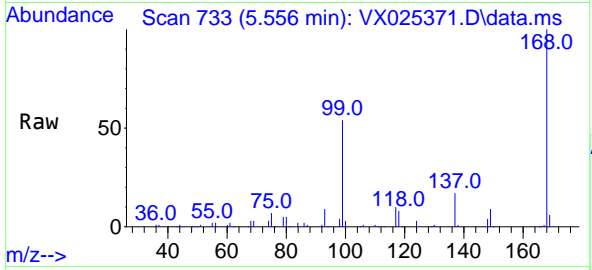
Ion	Ratio	Lower	Upper
75	100		
110	9.5	18.1	54.3#
77	0.0	24.4	36.6#



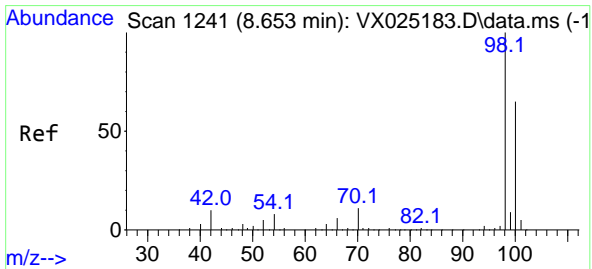
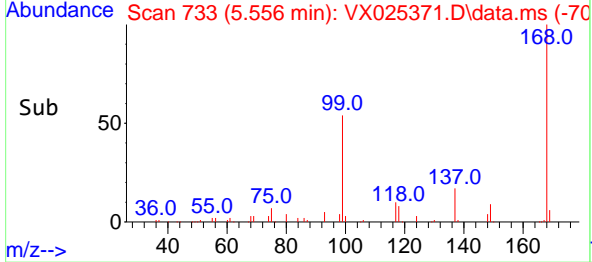
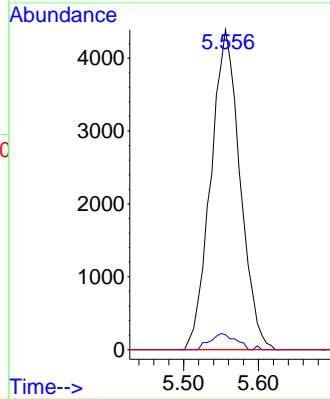


#38
 Carbon Tetrachloride
 Concen: 6.021 ug/l
 RT: 5.556 min Scan# 71
 Delta R.T. -0.122 min
 Lab File: VX025371.D
 Acq: 29 Nov 2021 15:48

Instrument : MSVOA_X
 Client Sample Id : TB-01-112221

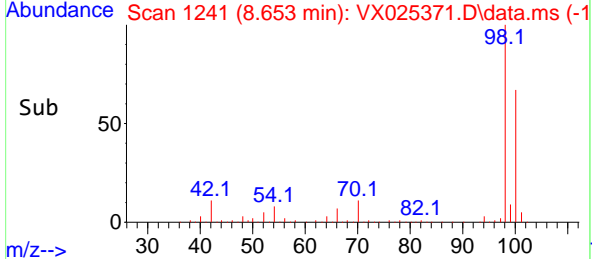
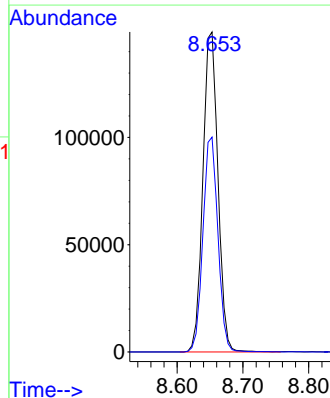
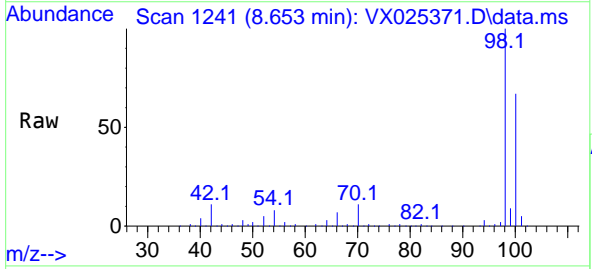


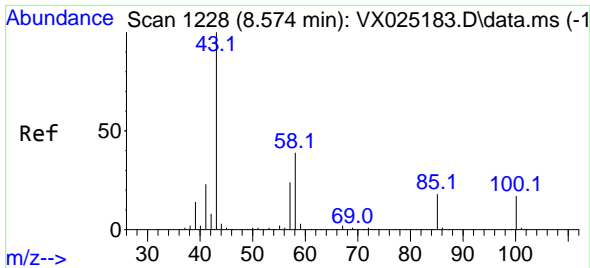
Tgt Ion:117 Resp: 11961
 Ion Ratio Lower Upper
 117 100
 119 4.6 75.6 113.4#
 121 0.0 23.7 35.5#



#50
 Toluene-d8
 Concen: 49.789 ug/l
 RT: 8.653 min Scan# 1241
 Delta R.T. -0.000 min
 Lab File: VX025371.D
 Acq: 29 Nov 2021 15:48

Tgt Ion: 98 Resp: 237440
 Ion Ratio Lower Upper
 98 100
 100 66.9 51.4 77.0

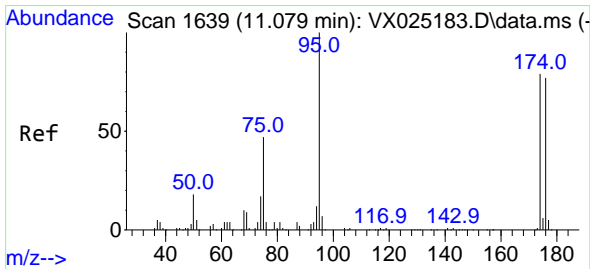
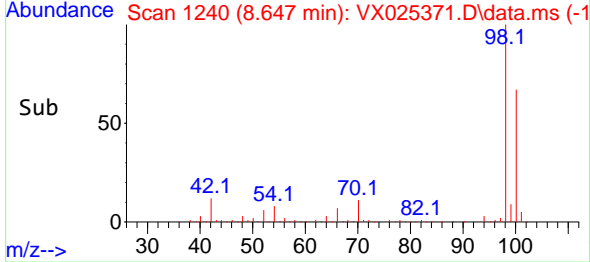
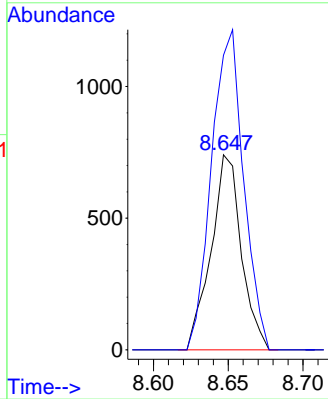
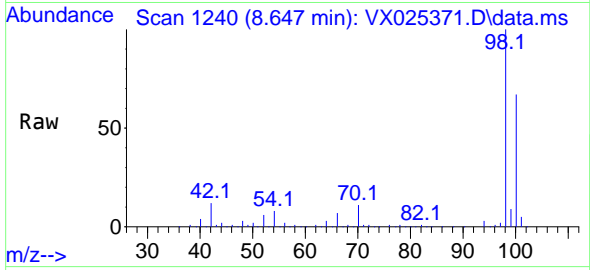




#51
 4-Methyl-2-Pentanone
 Concen: 0.487 ug/l
 RT: 8.647 min Scan# 11
 Delta R.T. 0.073 min
 Lab File: VX025371.D
 Acq: 29 Nov 2021 15:48

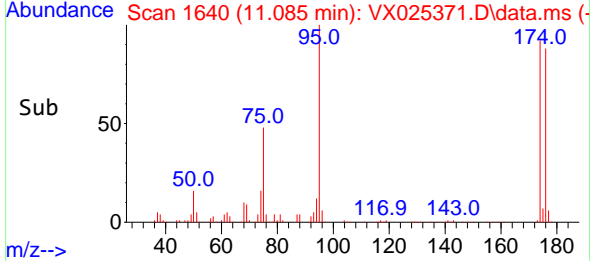
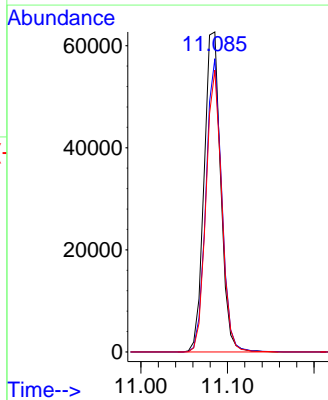
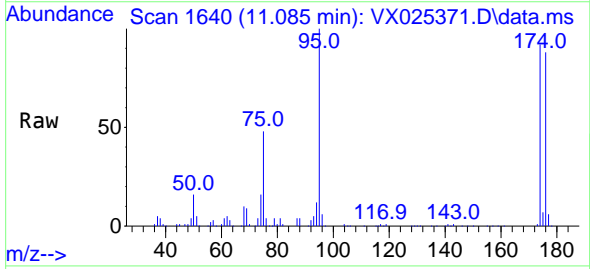
Instrument : MSVOA_X
 ClientSampleId : TB-01-112221

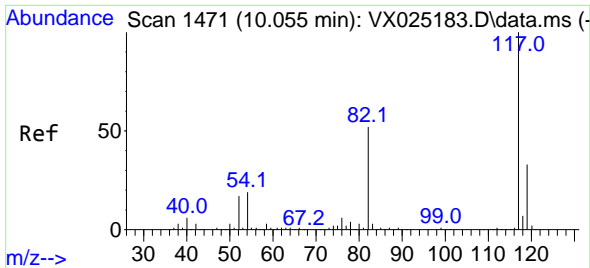
Tgt Ion: 43 Resp: 1042
 Ion Ratio Lower Upper
 43 100
 58 174.0 30.9 46.3#



#62
 4-Bromofluorobenzene
 Concen: 46.155 ug/l
 RT: 11.085 min Scan# 1640
 Delta R.T. 0.006 min
 Lab File: VX025371.D
 Acq: 29 Nov 2021 15:48

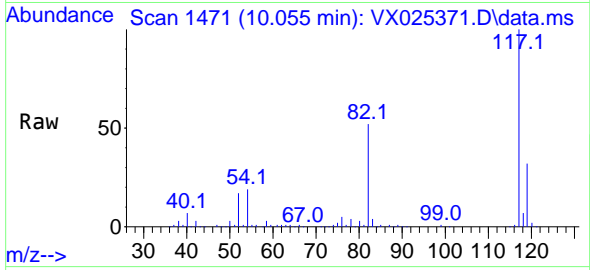
Tgt Ion: 95 Resp: 83270
 Ion Ratio Lower Upper
 95 100
 174 87.3 0.0 158.0
 176 83.6 0.0 153.6



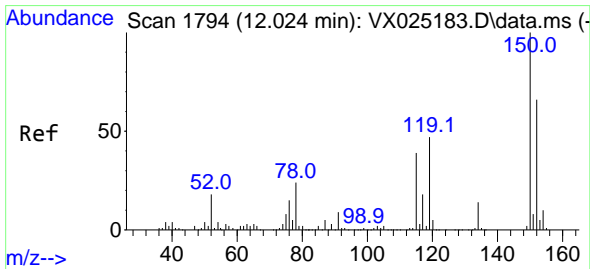
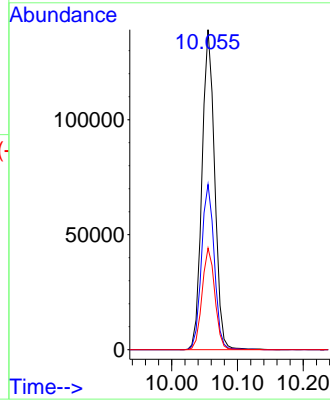
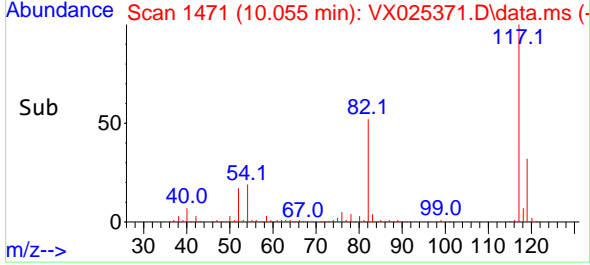


#63
 Chlorobenzene-d5
 Concen: 50.000 ug/l
 RT: 10.055 min Scan# 1471
 Delta R.T. 0.000 min
 Lab File: VX025371.D
 Acq: 29 Nov 2021 15:48

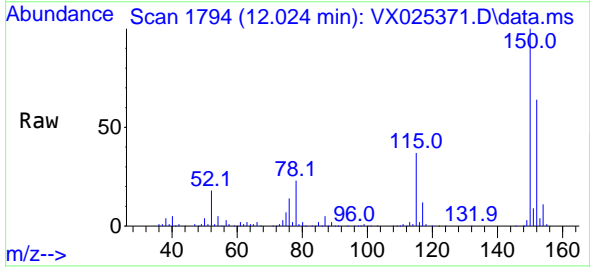
Instrument : MSVOA_X
 ClientSampleId : TB-01-112221



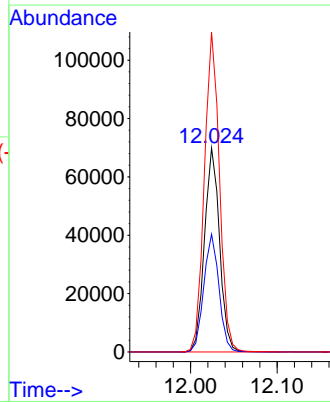
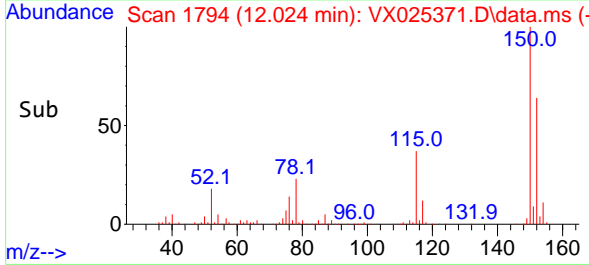
Tgt Ion:117 Resp: 186533
 Ion Ratio Lower Upper
 117 100
 82 51.6 44.6 67.0
 119 31.7 24.8 37.2

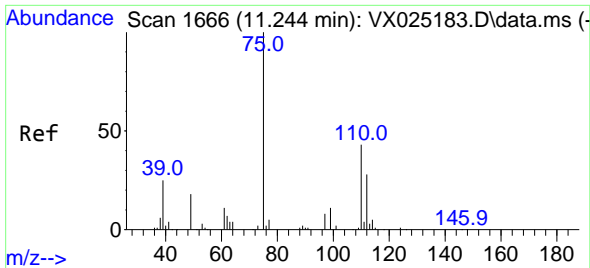


#72
 1,4-Dichlorobenzene-d4
 Concen: 50.000 ug/l
 RT: 12.024 min Scan# 1794
 Delta R.T. 0.000 min
 Lab File: VX025371.D
 Acq: 29 Nov 2021 15:48



Tgt Ion:152 Resp: 84619
 Ion Ratio Lower Upper
 152 100
 115 58.1 43.3 129.8
 150 157.2 0.0 351.2

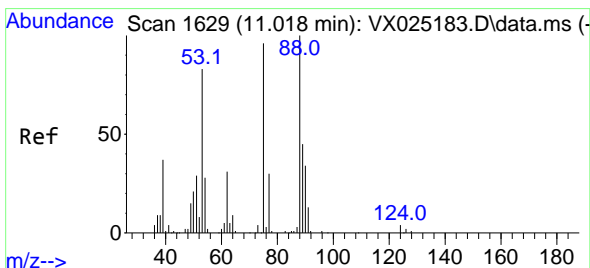
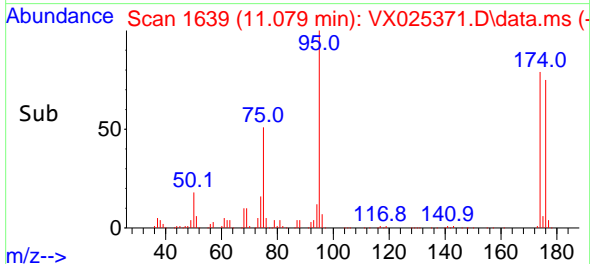
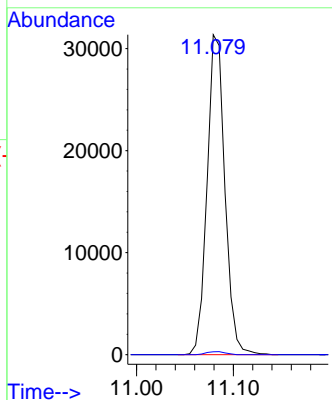
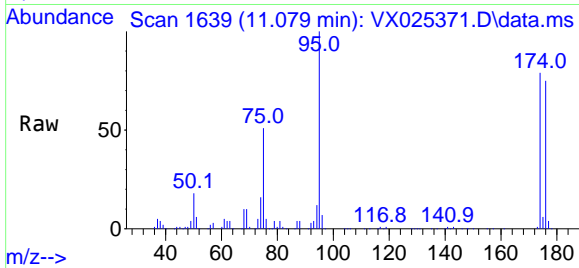




#76
 1,2,3-Trichloropropane
 Concen: 23.230 ug/l
 RT: 11.079 min Scan# 1639
 Delta R.T. -0.165 min
 Lab File: VX025371.D
 Acq: 29 Nov 2021 15:48

Instrument : MSVOA_X
 ClientSampleId : TB-01-112221

Tgt Ion: 75 Resp: 40254
 Ion Ratio Lower Upper
 75 100
 77 1.0 20.0 59.9#



#81
 trans-1,4-Dichloro-2-butene
 Concen: 58.521 ug/l
 RT: 11.079 min Scan# 1639
 Delta R.T. 0.061 min
 Lab File: VX025371.D
 Acq: 29 Nov 2021 15:48

Tgt Ion: 75 Resp: 40254
 Ion Ratio Lower Upper
 75 100
 53 0.0 81.9 122.9#
 89 0.0 38.2 57.2#

