

Data Path : Z:\voasrv\HPCHEM1\MSVOA_X\Data\VX112921\
 Data File : VX025365.D
 Acq On : 29 Nov 2021 13:27
 Operator : JC/MD
 Sample : M4847-02
 Misc : 5.0mL/MSVOA_X/WATER
 ALS Vial : 9 Sample Multiplier: 1

Instrument :
 MSVOA_X
 ClientSampleId :
 STORAGE-BLANK-WATER-REF-5

Integration Parameters: RTEINT.P

Integrator: RTE
 Smoothing : ON Filtering: 5
 Sampling : 1 Min Area: 3 % of largest Peak
 Start Thrs: 0.2 Max Peaks: 100
 Stop Thrs : 0 Peak Location: TOP

If leading or trailing edge < 100 prefer < Baseline drop else tangent >
 Peak separation: 5

Method : Z:\voasrv\HPCHEM1\MSVOA_X\Method\82X111721W.M
 Title : SW846 8260

Signal : TIC: VX025365.D\data.ms

peak #	R.T. min	first scan	max scan	last scan	PK TY	peak height	corr. area	corr. % max.	% of total
1	1.252	23	27	33	rBV	53182	49542	7.82%	1.448%
2	2.532	231	237	245	rBV	4995	9417	1.49%	0.275%
3	5.391	694	706	722	rBV	74131	214365	33.83%	6.265%
4	5.556	722	733	746	rVV	126801	360683	56.91%	10.541%
5	5.958	789	799	818	rVB	76157	202754	31.99%	5.925%
6	6.763	922	931	943	rBV	195852	465384	73.44%	13.600%
7	8.653	1234	1241	1256	rBV	399578	633732	100.00%	18.520%
8	10.055	1465	1471	1485	rBV	410478	553066	87.27%	16.163%
9	11.085	1634	1640	1653	rBV	319004	421710	66.54%	12.324%
10	12.024	1789	1794	1803	rBV	408530	511184	80.66%	14.939%

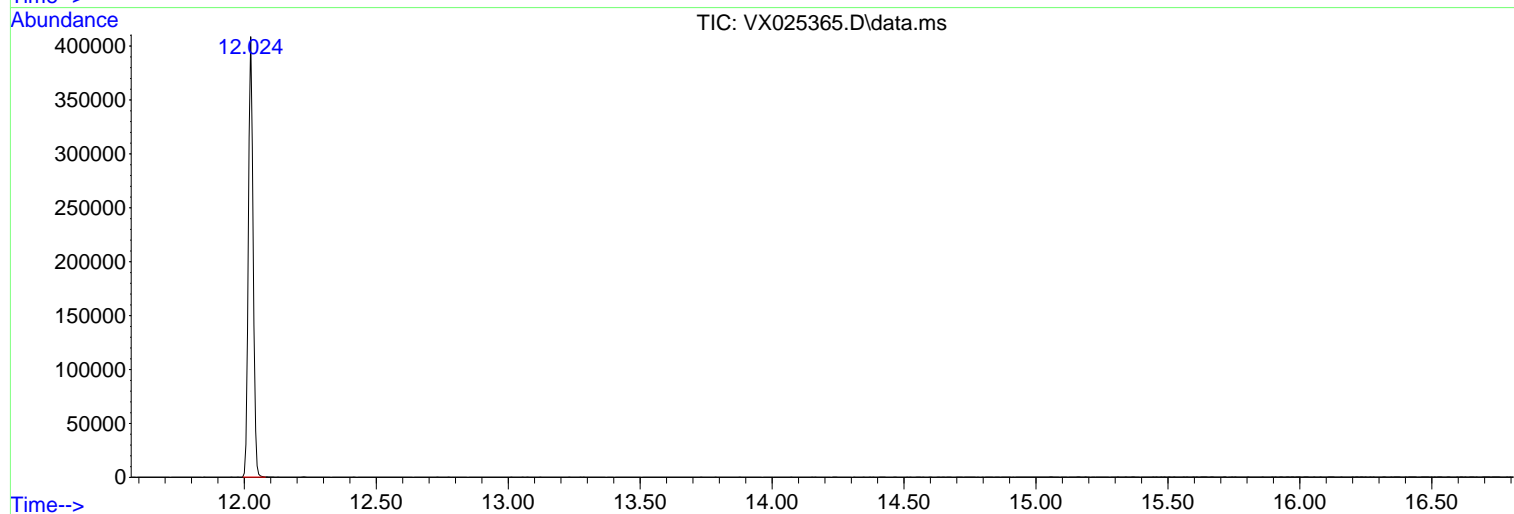
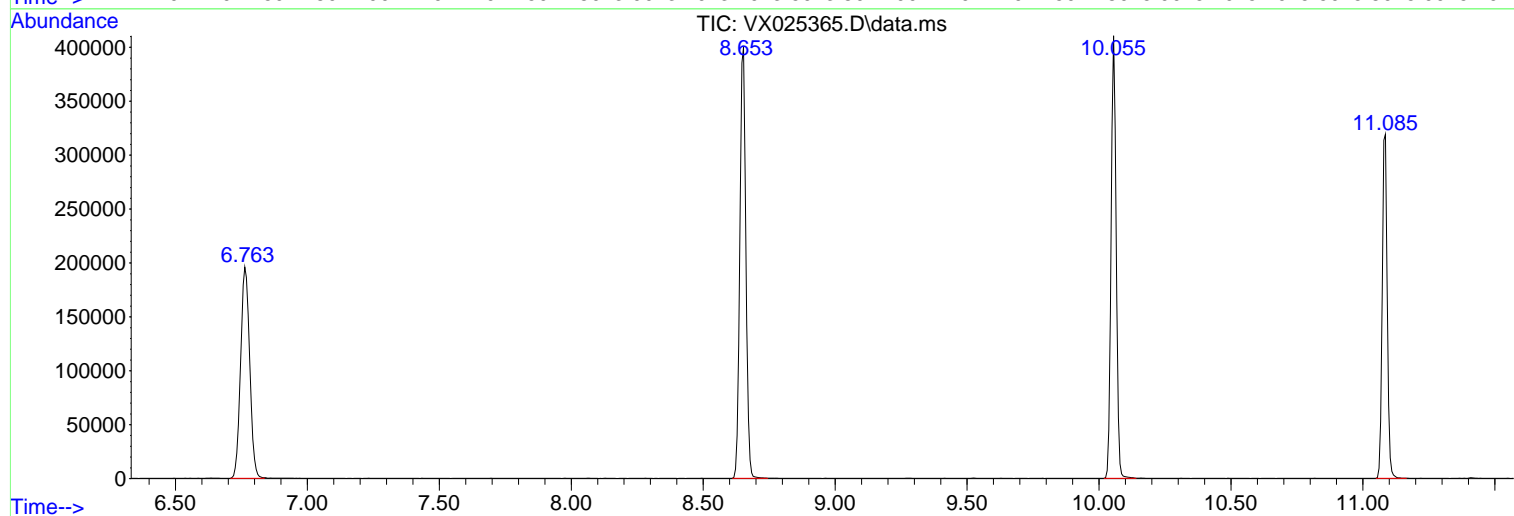
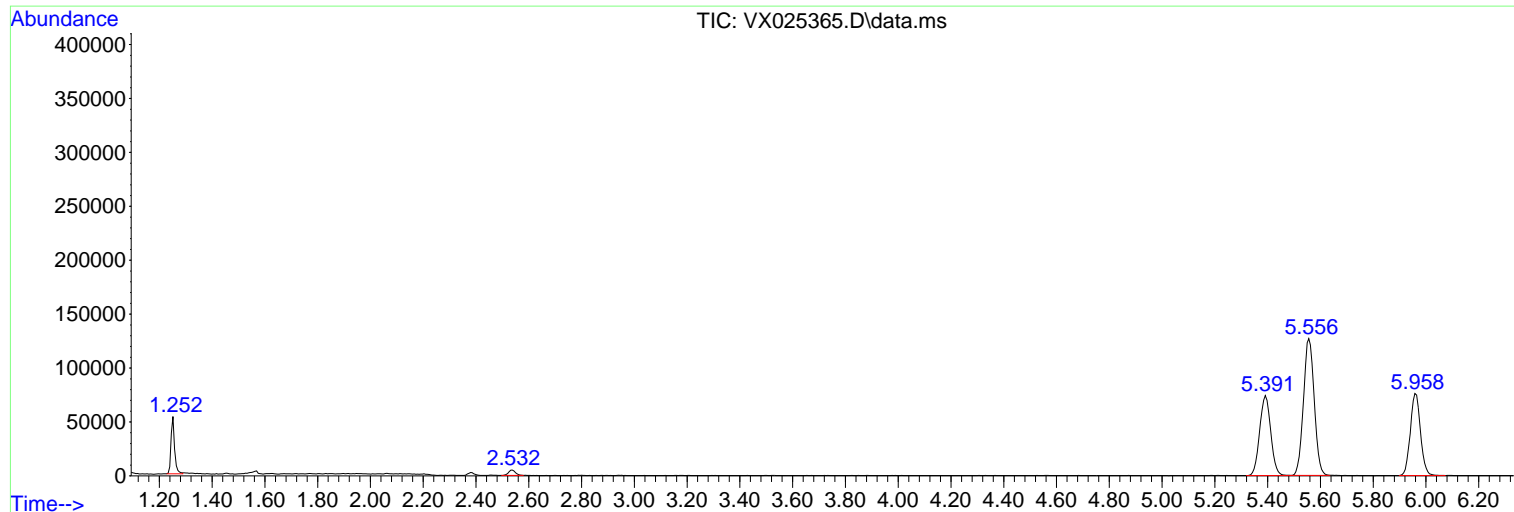
Sum of corrected areas: 3421837

Data Path : Z:\voasrv\HPCHEM1\MSVOA_X\Data\VX112921\
Data File : VX025365.D
Acq On : 29 Nov 2021 13:27
Operator : JC/MD
Sample : M4847-02
Misc : 5.0mL/MSVOA_X/WATER
ALS Vial : 9 Sample Multiplier: 1

Instrument :
MSVOA_X
ClientSampleId :
STORAGE-BLANK-WATER-REF-5

Quant Method : Z:\voasrv\HPCHEM1\MSVOA_X\Method\82X111721W.M
Quant Title : SW846 8260

TIC Library : C:\Database\NIST20.L
TIC Integration Parameters: LSCINT.P



Library Search Compound Report

Data Path : Z:\voasrv\HPCHEM1\MSVOA_X\Data\VX112921\
Data File : VX025365.D
Acq On : 29 Nov 2021 13:27
Operator : JC/MD
Sample : M4847-02
Misc : 5.0mL/MSVOA_X/WATER
ALS Vial : 9 Sample Multiplier: 1

Instrument :
MSVOA_X
ClientSampleId :
STORAGE-BLANK-WATER-REF-5

Quant Method : Z:\voasrv\HPCHEM1\MSVOA_X\Method\82X111721W.M
Quant Title : SW846 8260

TIC Library : C:\Database\NIST20.L
TIC Integration Parameters: LSCINT.P

No Library Search Compounds Detected

Data Path : Z:\voasrv\HPCHEM1\MSVOA_X\Data\VX112921\
Data File : VX025365.D
Acq On : 29 Nov 2021 13:27
Operator : JC/MD
Sample : M4847-02
Misc : 5.0mL/MSVOA_X/WATER
ALS Vial : 9 Sample Multiplier: 1

Instrument :
MSVOA_X
ClientSampleId :
STORAGE-BLANK-WATER-REF-5

Quant Method : Z:\voasrv\HPCHEM1\MSVOA_X\Method\82X111721W.M
Quant Title : SW846 8260

TIC Library : C:\Database\NIST20.L
TIC Integration Parameters: LSCINT.P

TIC Top Hit name	RT	EstConc	Units	Response	--Internal Standard--			
					#	RT	Resp	Conc
