

Data Path : Z:\voasrv\HPCHEM1\MSVOA_X\Data\VX113021\
 Data File : VX025389.D
 Acq On : 30 Nov 2021 10:56
 Operator : JC/MD
 Sample : VX1130WBL01
 Misc : 5.0mL/MSVOA_X/WATER
 ALS Vial : 4 Sample Multiplier: 1

Instrument :
 MSVOA_X
 ClientSampleId :
 VX1130WBL01

Quant Time: Dec 01 02:19:12 2021
 Quant Method : Z:\voasrv\HPCHEM1\MSVOA_X\Method\82X111721W.M
 Quant Title : SW846 8260
 QLast Update : Wed Nov 17 15:36:16 2021
 Response via : Initial Calibration

Compound	R.T.	QIon	Response	Conc	Units	Dev(Min)

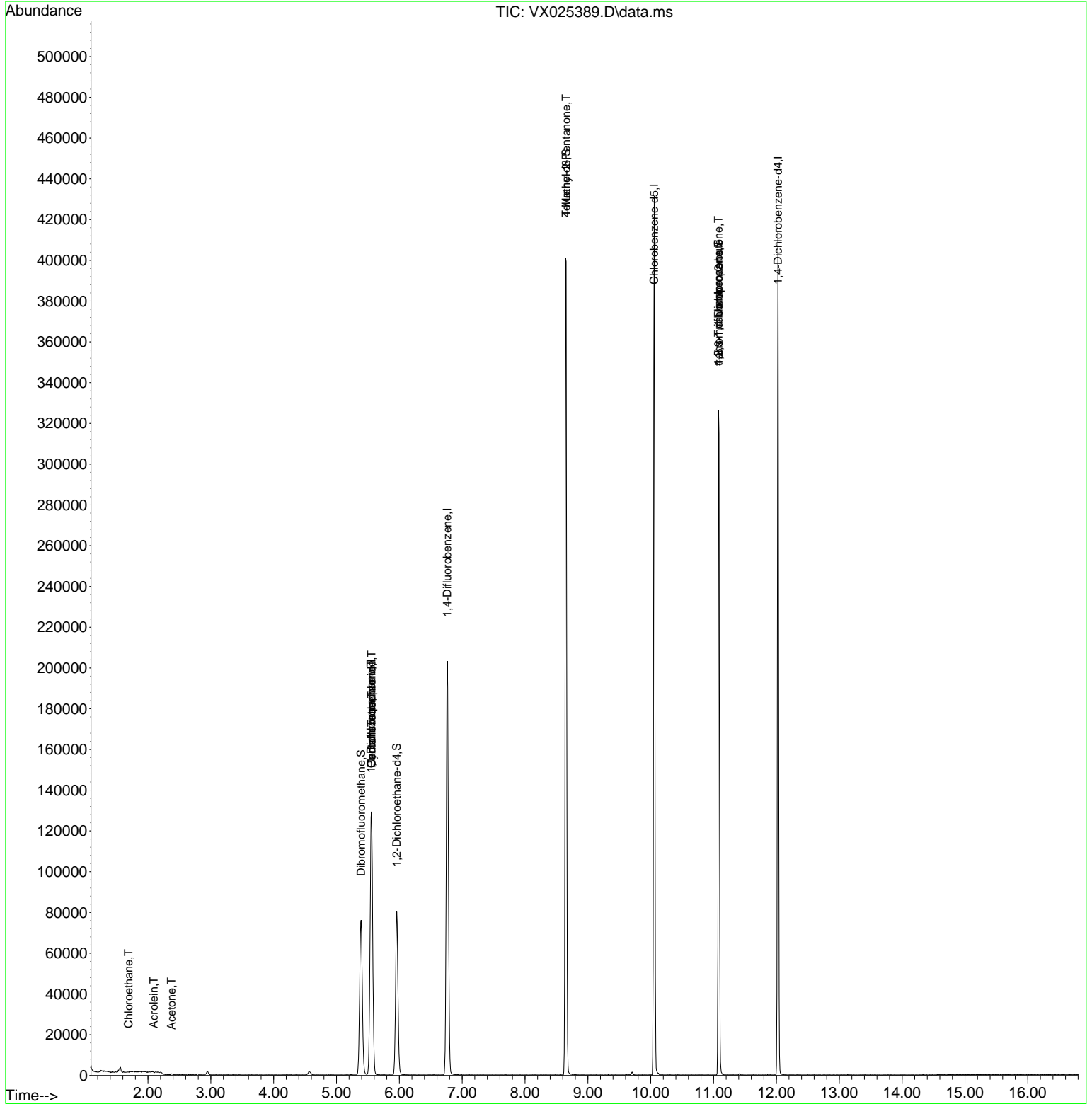
Internal Standards						
1) Pentafluorobenzene	5.556	168	134262	50.000	ug/l	0.00
34) 1,4-Difluorobenzene	6.763	114	219970	50.000	ug/l	0.00
63) Chlorobenzene-d5	10.055	117	196893	50.000	ug/l	0.00
72) 1,4-Dichlorobenzene-d4	12.024	152	89860	50.000	ug/l	0.00
System Monitoring Compounds						
33) 1,2-Dichloroethane-d4	5.958	65	74804	52.857	ug/l	0.00
Spiked Amount	50.000	Range 78 - 117	Recovery	=	105.720%	
35) Dibromofluoromethane	5.391	113	66898	49.566	ug/l	0.00
Spiked Amount	50.000	Range 75 - 124	Recovery	=	99.140%	
50) Toluene-d8	8.653	98	252219	49.703	ug/l	0.00
Spiked Amount	50.000	Range 92 - 112	Recovery	=	99.400%	
62) 4-Bromofluorobenzene	11.079	95	90414	47.097	ug/l	0.00
Spiked Amount	50.000	Range 83 - 123	Recovery	=	94.200%	
Target Compounds						
						Qvalue
6) Chloroethane	1.691	64	424	0.388	ug/l #	43
11) Tert butyl alcohol	2.941	59	1087	Below Cal	#	72
13) Acrolein	2.093	56	20	0.308	ug/l #	9
16) Acetone	2.374	43	494	0.628	ug/l	91
31) Cyclohexane	5.556	56	2489	1.138	ug/l #	1
36) 1,1-Dichloropropene	5.550	75	8743	4.556	ug/l #	51
38) Carbon Tetrachloride	5.556	117	12564	5.944	ug/l #	16
51) 4-Methyl-2-Pentanone	8.653	43	1080	0.474	ug/l #	1
76) 1,2,3-Trichloropropane	11.079	75	43189	23.470	ug/l #	37
81) trans-1,4-Dichloro-2-b...	11.079	75	43189	59.126	ug/l #	9
95) Naphthalene	13.780	128	88	Below Cal	#	69

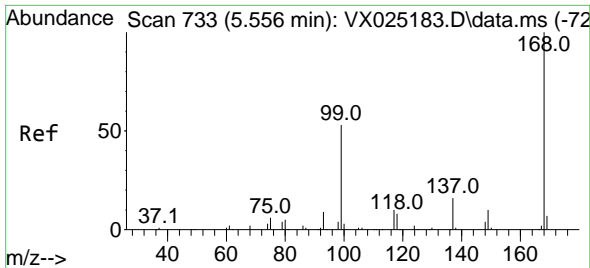
(#) = qualifier out of range (m) = manual integration (+) = signals summed

Data Path : Z:\voasrv\HPCHEM1\MSVOA_X\Data\VX113021\
 Data File : VX025389.D
 Acq On : 30 Nov 2021 10:56
 Operator : JC/MD
 Sample : VX1130WBL01
 Misc : 5.0mL/MSVOA_X/WATER
 ALS Vial : 4 Sample Multiplier: 1

Instrument :
 MSVOA_X
ClientSampleId :
 VX1130WBL01

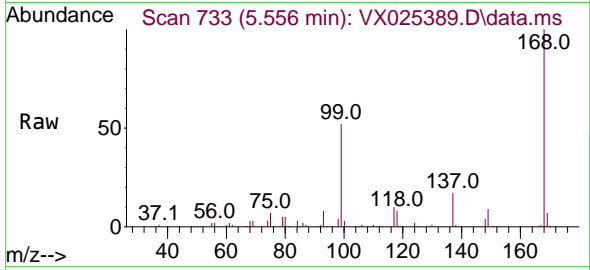
Quant Time: Dec 01 02:19:12 2021
 Quant Method : Z:\voasrv\HPCHEM1\MSVOA_X\Method\82X111721W.M
 Quant Title : SW846 8260
 QLast Update : Wed Nov 17 15:36:16 2021
 Response via : Initial Calibration



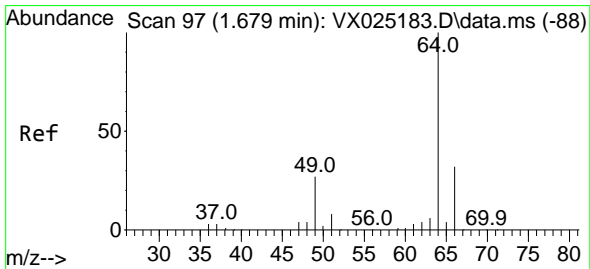
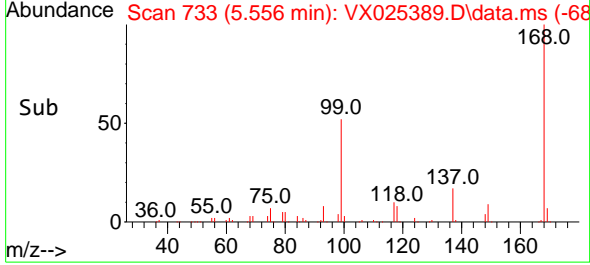
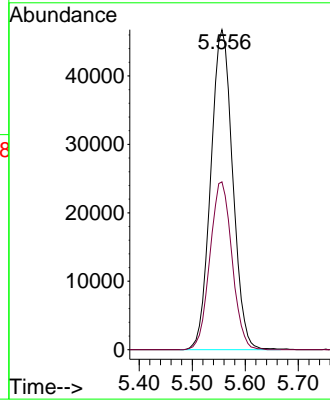


#1
 Pentafluorobenzene
 Concen: 50.000 ug/l
 RT: 5.556 min Scan# 71
 Delta R.T. -0.000 min
 Lab File: VX025389.D
 Acq: 30 Nov 2021 10:56

Instrument :
 MSVOA_X
 ClientSampleId :
 VX1130WBL01

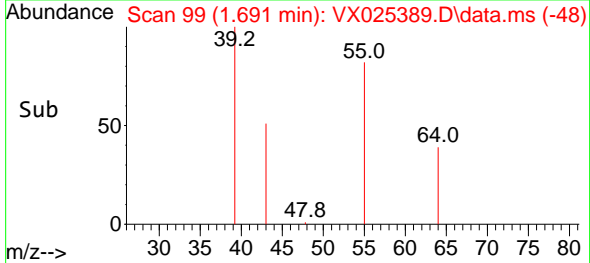
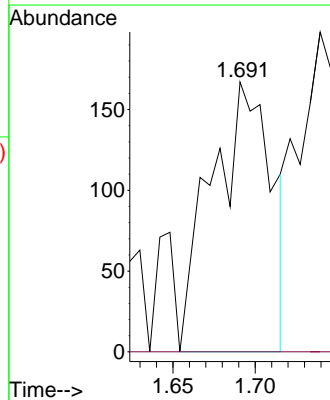
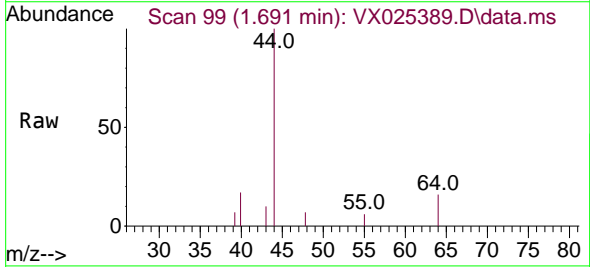


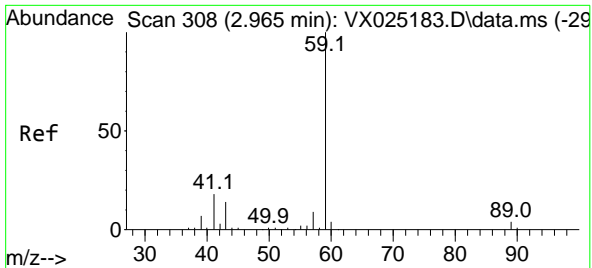
Tgt Ion:168 Resp: 134262
 Ion Ratio Lower Upper
 168 100
 99 52.4 46.4 69.6



#6
 Chloroethane
 Concen: 0.388 ug/l
 RT: 1.691 min Scan# 99
 Delta R.T. 0.012 min
 Lab File: VX025389.D
 Acq: 30 Nov 2021 10:56

Tgt Ion: 64 Resp: 424
 Ion Ratio Lower Upper
 64 100
 66 0.0 25.6 38.4#

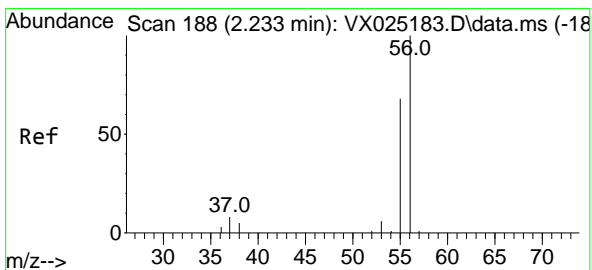
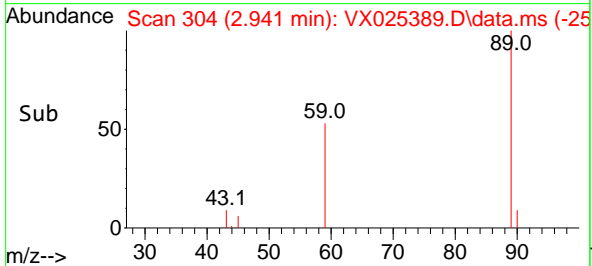
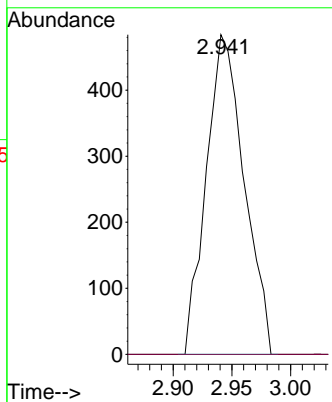
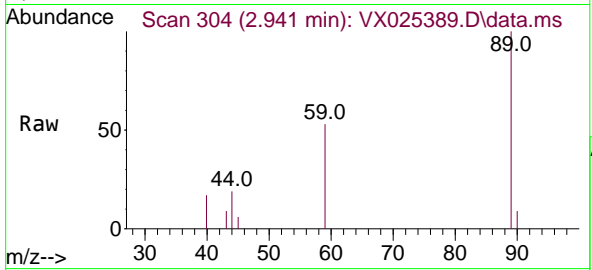




#11
 Tert butyl alcohol
 Concen: Below Cal
 RT: 2.941 min Scan# 30
 Delta R.T. -0.024 min
 Lab File: VX025389.D
 Acq: 30 Nov 2021 10:56

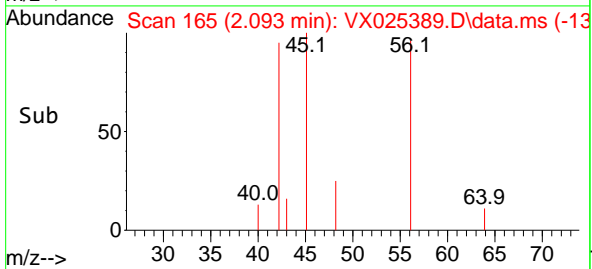
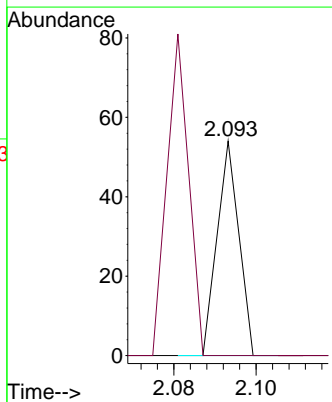
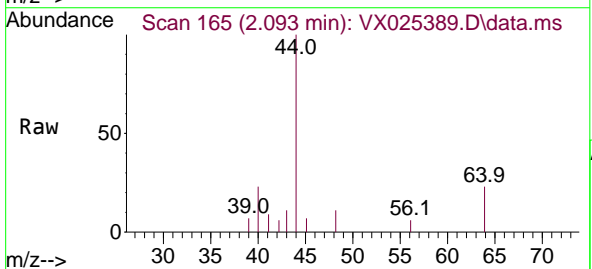
Instrument : MSVOA_X
 ClientSampleId : VX1130WBL01

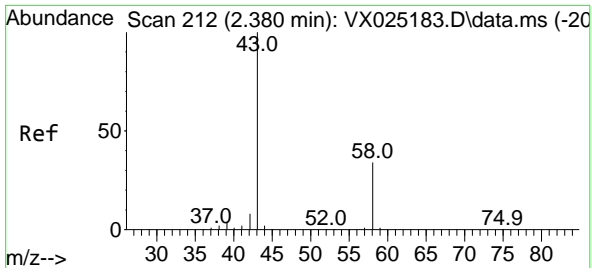
Tgt Ion: 59 Resp: 1087
 Ion Ratio Lower Upper
 59 100
 57 0.0 8.5 12.7#



#13
 Acrolein
 Concen: 0.308 ug/l
 RT: 2.093 min Scan# 165
 Delta R.T. -0.140 min
 Lab File: VX025389.D
 Acq: 30 Nov 2021 10:56

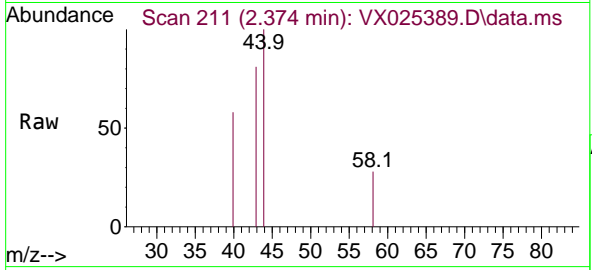
Tgt Ion: 56 Resp: 20
 Ion Ratio Lower Upper
 56 100
 55 150.0 58.6 87.8#



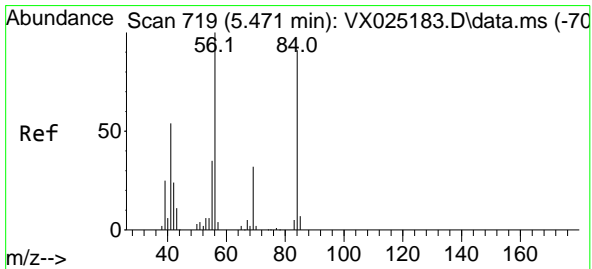
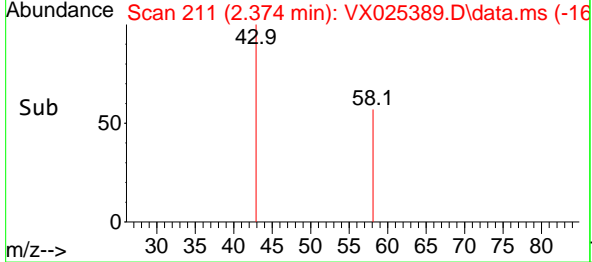
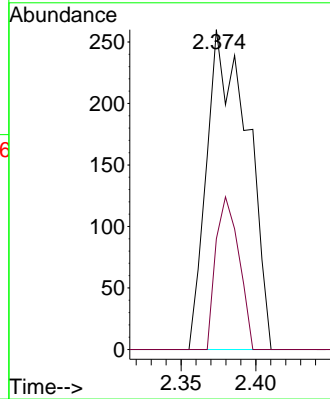


#16
 Acetone
 Concen: 0.628 ug/l
 RT: 2.374 min Scan# 211
 Delta R.T. -0.006 min
 Lab File: VX025389.D
 Acq: 30 Nov 2021 10:56

Instrument :
 MSVOA_X
 ClientSampleId :
 VX1130WBL01

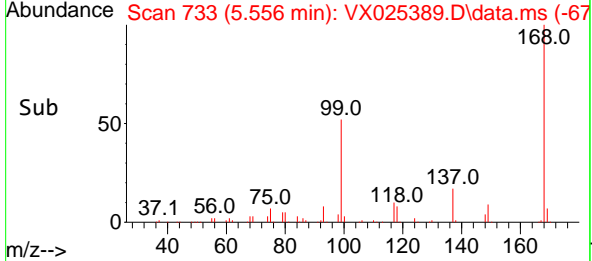
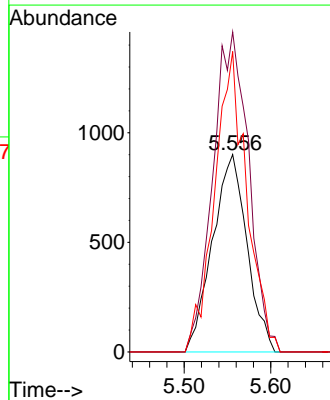
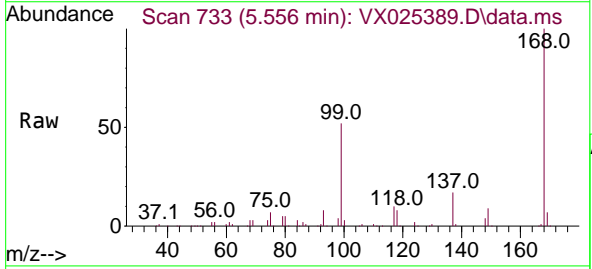


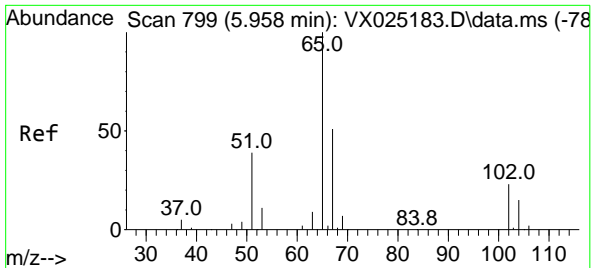
Tgt Ion: 43 Resp: 494
 Ion Ratio Lower Upper
 43 100
 58 34.6 24.0 36.0



#31
 Cyclohexane
 Concen: 1.138 ug/l
 RT: 5.556 min Scan# 733
 Delta R.T. 0.085 min
 Lab File: VX025389.D
 Acq: 30 Nov 2021 10:56

Tgt Ion: 56 Resp: 2489
 Ion Ratio Lower Upper
 56 100
 69 162.0 24.2 36.2#
 84 158.9 71.5 107.3#

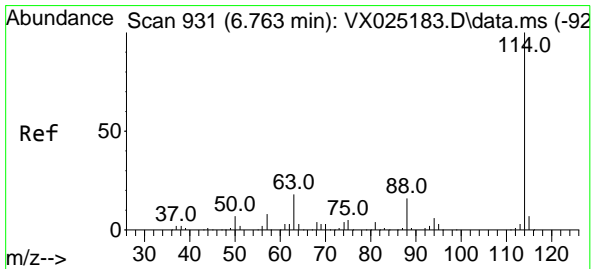
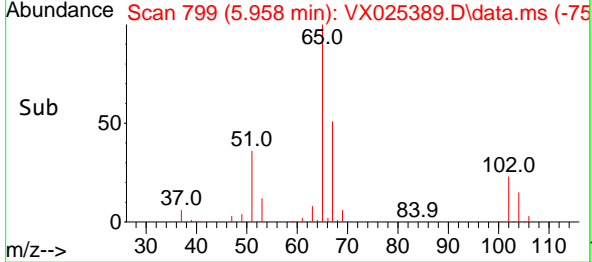
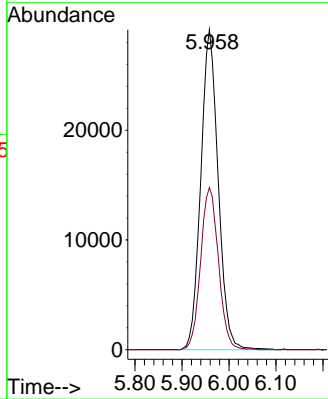
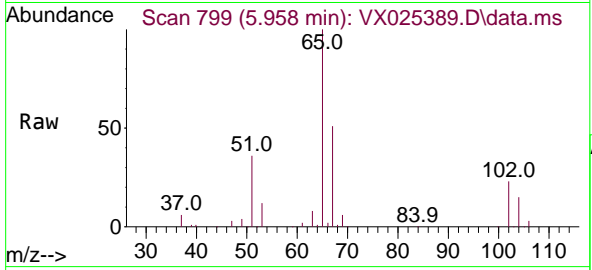




#33
 1,2-Dichloroethane-d4
 Concen: 52.857 ug/l
 RT: 5.958 min Scan# 799
 Delta R.T. 0.000 min
 Lab File: VX025389.D
 Acq: 30 Nov 2021 10:56

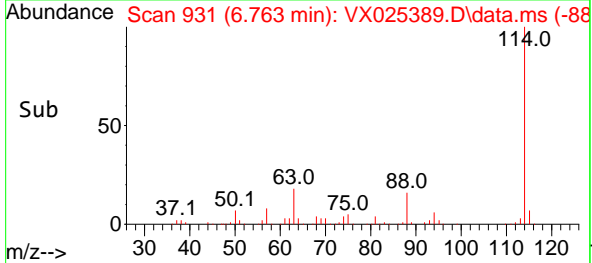
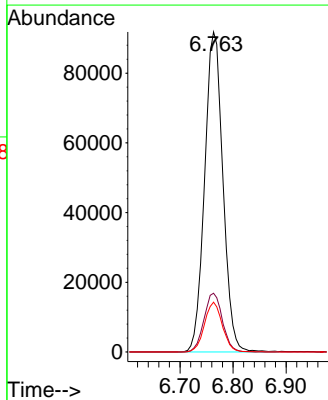
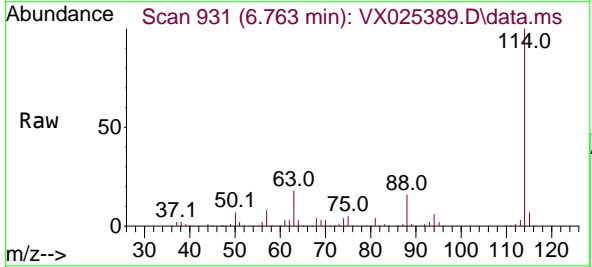
Instrument : MSVOA_X
 ClientSampleId : VX1130WBL01

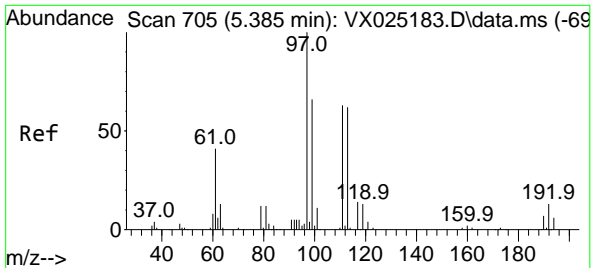
Tgt Ion: 65 Resp: 74804
 Ion Ratio Lower Upper
 65 100
 67 52.0 0.0 101.0



#34
 1,4-Difluorobenzene
 Concen: 50.000 ug/l
 RT: 6.763 min Scan# 931
 Delta R.T. 0.000 min
 Lab File: VX025389.D
 Acq: 30 Nov 2021 10:56

Tgt Ion: 114 Resp: 219970
 Ion Ratio Lower Upper
 114 100
 63 18.3 0.0 41.0
 88 15.5 0.0 34.8

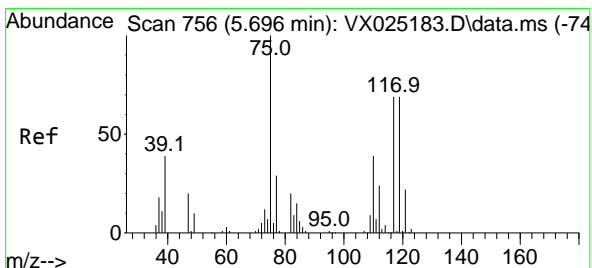
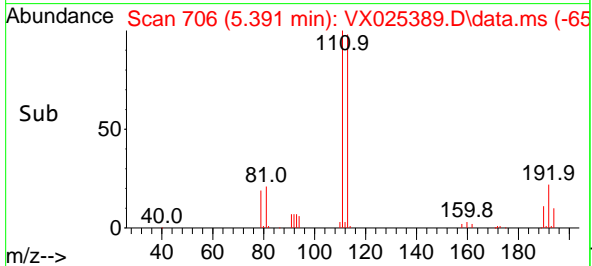
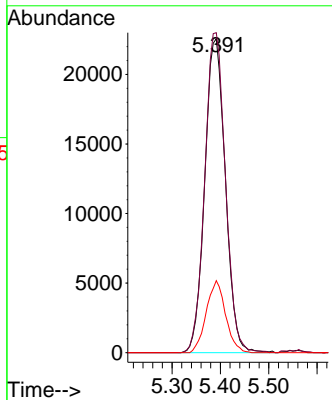
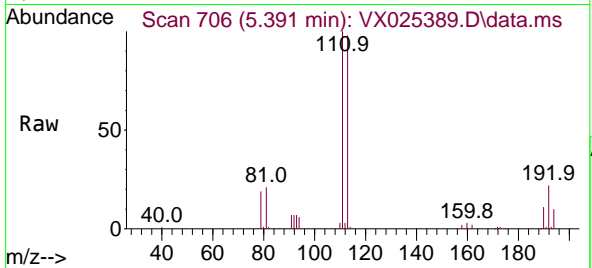




#35
 Dibromofluoromethane
 Concen: 49.566 ug/l
 RT: 5.391 min Scan# 705
 Delta R.T. 0.006 min
 Lab File: VX025389.D
 Acq: 30 Nov 2021 10:56

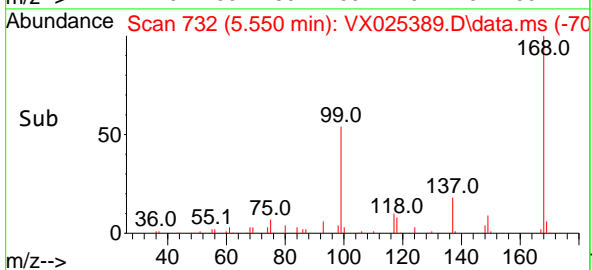
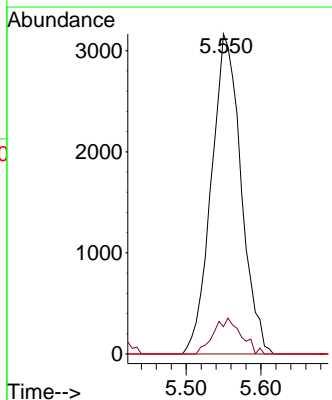
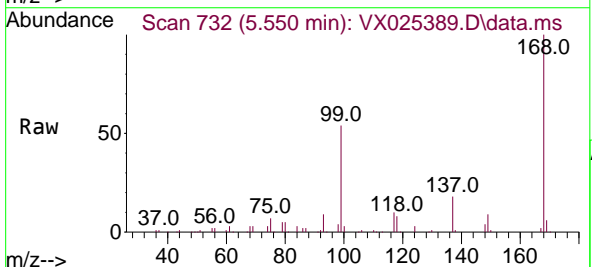
Instrument :
 MSVOA_X
 ClientSampleId :
 VX1130WBL01

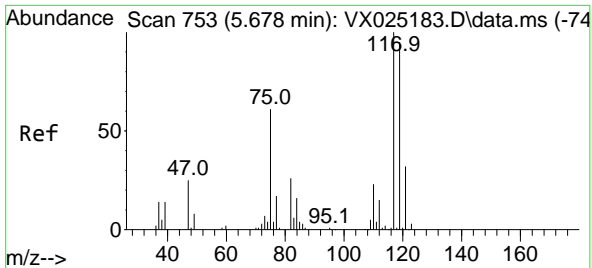
Tgt Ion	Resp	Lower	Upper
113	66898		
113	100		
111	102.3	82.1	123.1
192	21.5	15.6	23.4



#36
 1,1-Dichloropropene
 Concen: 4.556 ug/l
 RT: 5.550 min Scan# 732
 Delta R.T. -0.146 min
 Lab File: VX025389.D
 Acq: 30 Nov 2021 10:56

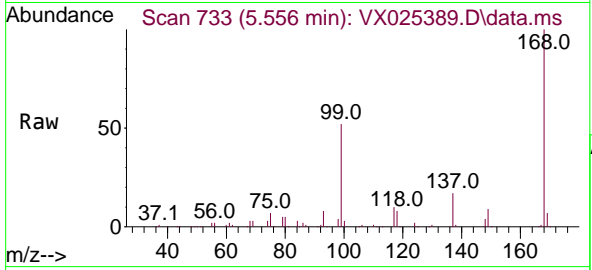
Tgt Ion	Resp	Lower	Upper
75	8743		
75	100		
110	10.4	18.1	54.3#
77	0.0	24.4	36.6#



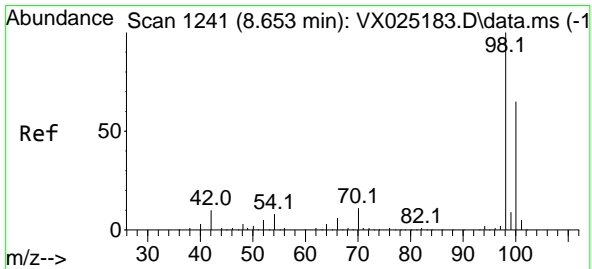
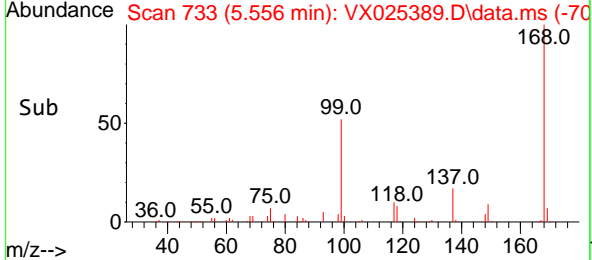
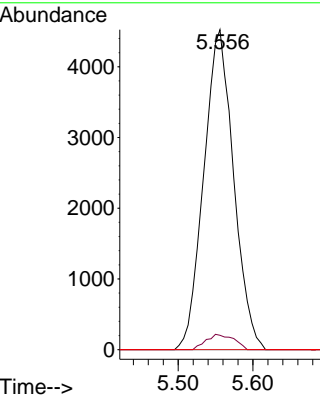


#38
 Carbon Tetrachloride
 Concen: 5.944 ug/l
 RT: 5.556 min Scan# 711
 Delta R.T. -0.122 min
 Lab File: VX025389.D
 Acq: 30 Nov 2021 10:56

Instrument : MSVOA_X
 ClientSampleId : VX1130WBL01

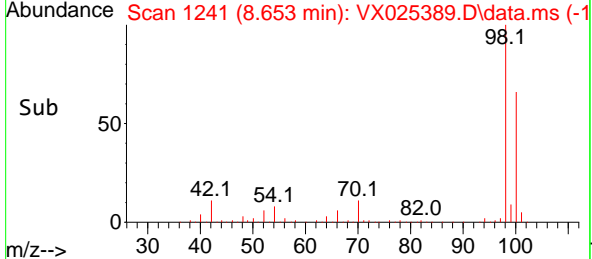
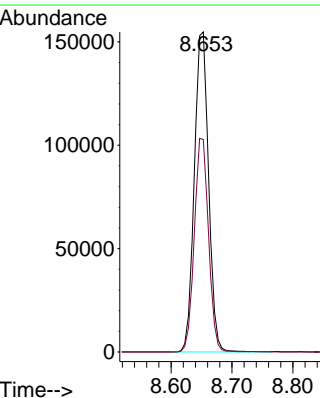
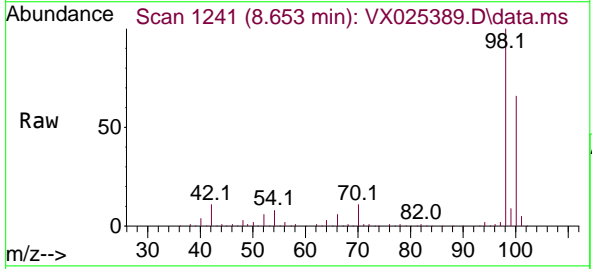


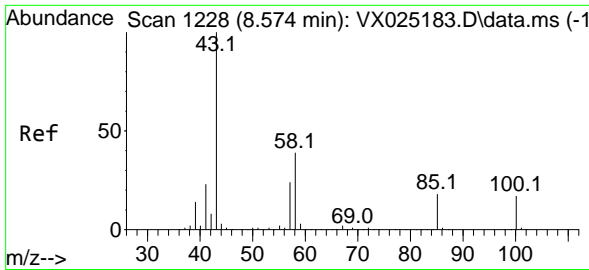
Tgt Ion: 117 Resp: 12564
 Ion Ratio Lower Upper
 117 100
 119 4.5 75.6 113.4#
 121 0.0 23.7 35.5#



#50
 Toluene-d8
 Concen: 49.703 ug/l
 RT: 8.653 min Scan# 1241
 Delta R.T. -0.000 min
 Lab File: VX025389.D
 Acq: 30 Nov 2021 10:56

Tgt Ion: 98 Resp: 252219
 Ion Ratio Lower Upper
 98 100
 100 66.4 51.4 77.0

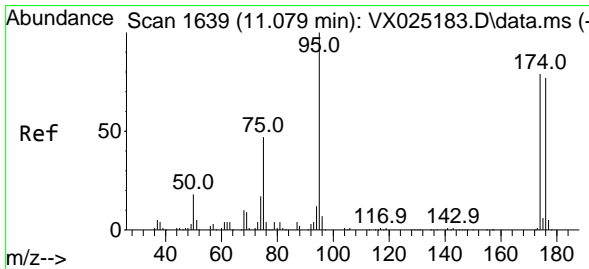
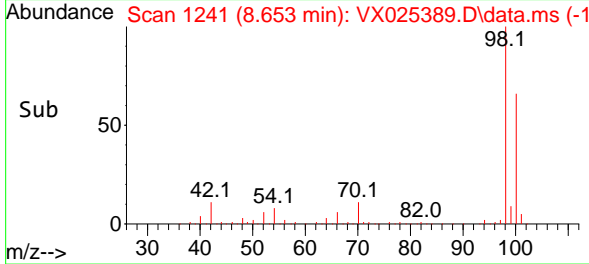
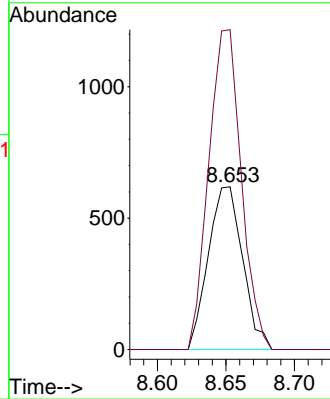
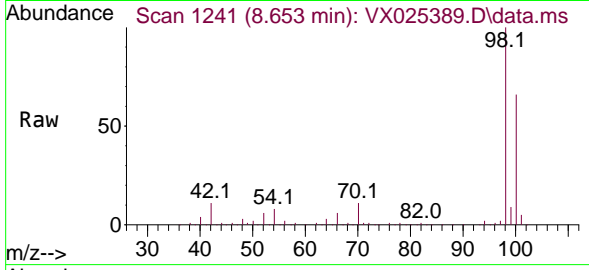




#51
 4-Methyl-2-Pentanone
 Concen: 0.474 ug/l
 RT: 8.653 min Scan# 1241
 Delta R.T. 0.079 min
 Lab File: VX025389.D
 Acq: 30 Nov 2021 10:56

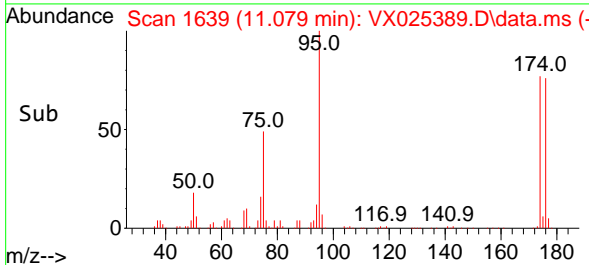
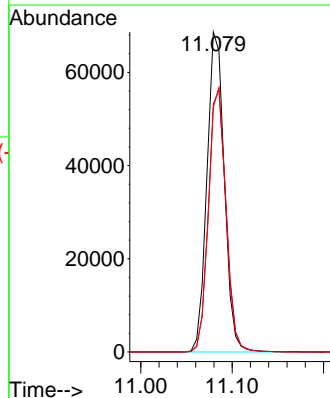
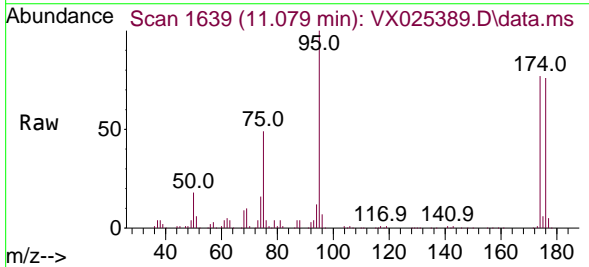
Instrument :
 MSVOA_X
 ClientSampleId :
 VX1130WBL01

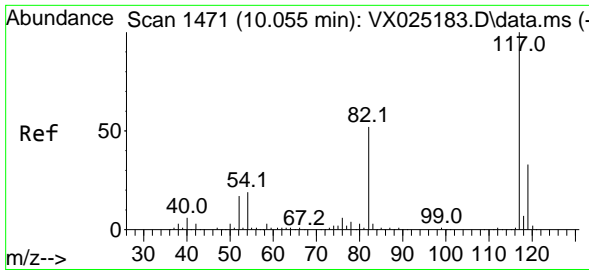
Tgt Ion: 43 Resp: 1080
 Ion Ratio Lower Upper
 43 100
 58 186.3 30.9 46.3#



#62
 4-Bromofluorobenzene
 Concen: 47.097 ug/l
 RT: 11.079 min Scan# 1639
 Delta R.T. 0.000 min
 Lab File: VX025389.D
 Acq: 30 Nov 2021 10:56

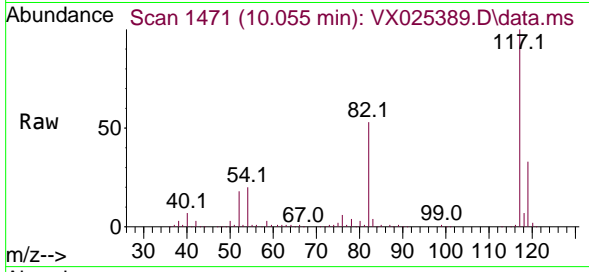
Tgt Ion: 95 Resp: 90414
 Ion Ratio Lower Upper
 95 100
 174 83.6 0.0 158.0
 176 82.6 0.0 153.6



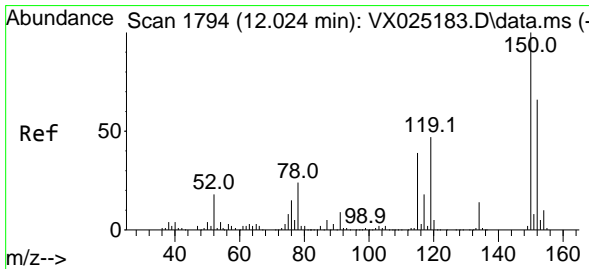
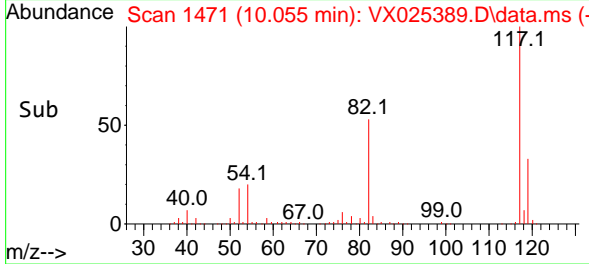
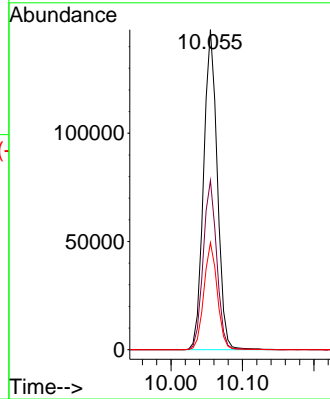


#63
 Chlorobenzene-d5
 Concen: 50.000 ug/l
 RT: 10.055 min Scan# 1471
 Delta R.T. 0.000 min
 Lab File: VX025389.D
 Acq: 30 Nov 2021 10:56

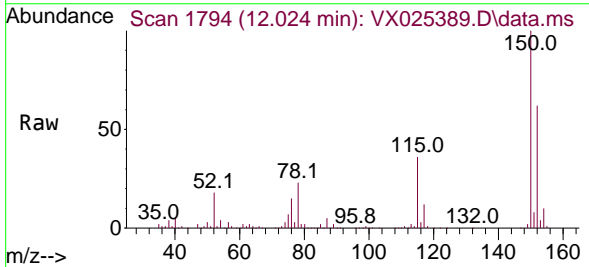
Instrument :
 MSVOA_X
 ClientSampleId :
 VX1130WBL01



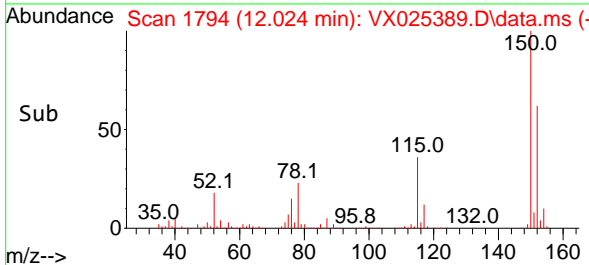
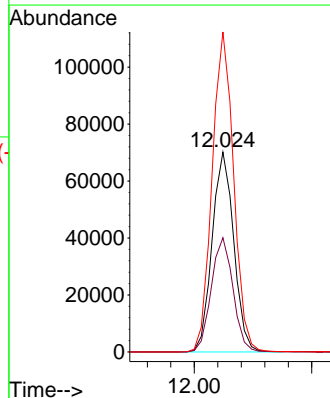
Tgt Ion:117 Resp: 196893
 Ion Ratio Lower Upper
 117 100
 82 52.9 44.6 67.0
 119 33.5 24.8 37.2

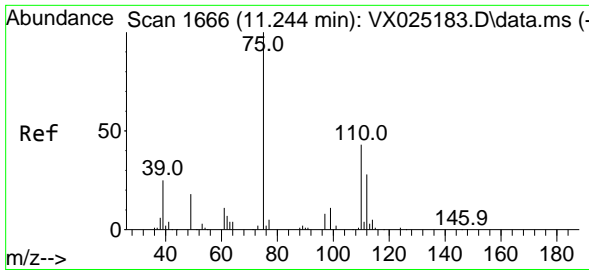


#72
 1,4-Dichlorobenzene-d4
 Concen: 50.000 ug/l
 RT: 12.024 min Scan# 1794
 Delta R.T. 0.000 min
 Lab File: VX025389.D
 Acq: 30 Nov 2021 10:56



Tgt Ion:152 Resp: 89860
 Ion Ratio Lower Upper
 152 100
 115 57.5 43.3 129.8
 150 159.0 0.0 351.2

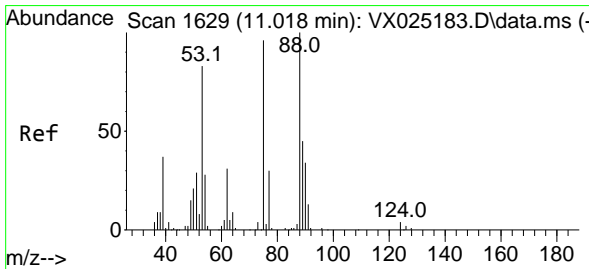
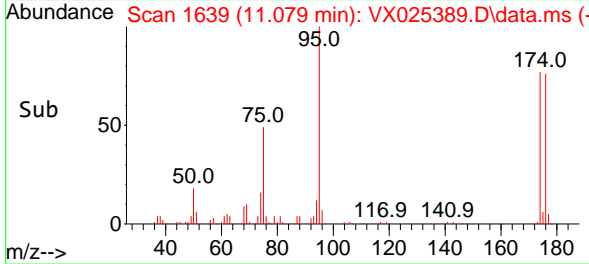
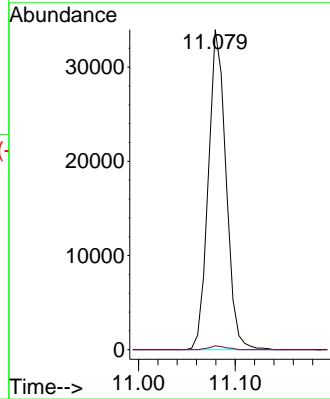
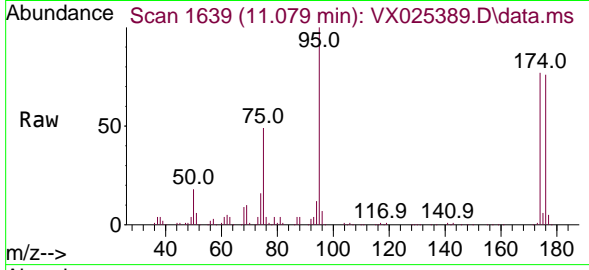




#76
 1,2,3-Trichloropropane
 Concen: 23.470 ug/l
 RT: 11.079 min Scan# 1639
 Delta R.T. -0.165 min
 Lab File: VX025389.D
 Acq: 30 Nov 2021 10:56

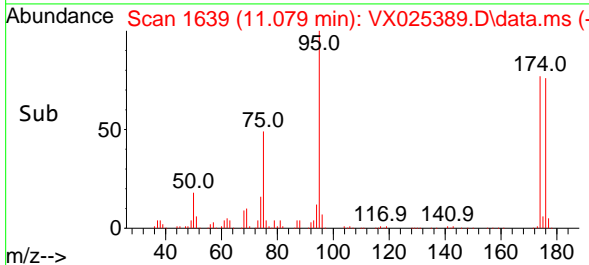
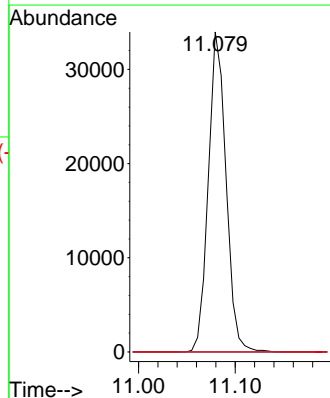
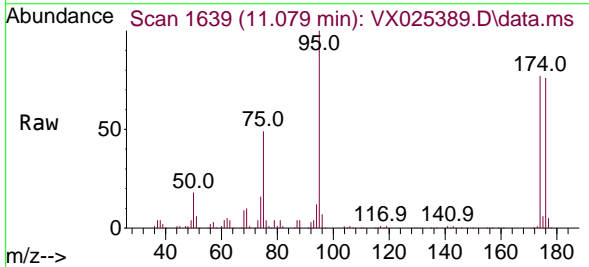
Instrument : MSVOA_X
 ClientSampleId : VX1130WBL01

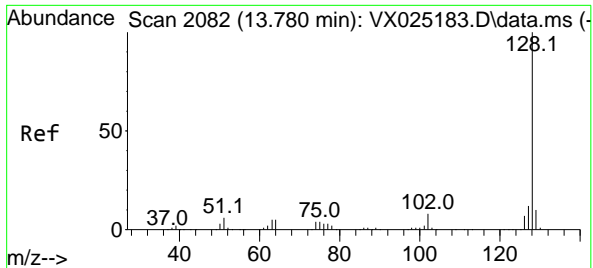
Tgt Ion: 75 Resp: 43189
 Ion Ratio Lower Upper
 75 100
 77 1.2 20.0 59.9#



#81
 trans-1,4-Dichloro-2-butene
 Concen: 59.126 ug/l
 RT: 11.079 min Scan# 1639
 Delta R.T. 0.061 min
 Lab File: VX025389.D
 Acq: 30 Nov 2021 10:56

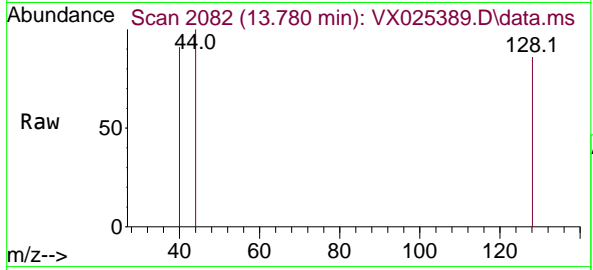
Tgt Ion: 75 Resp: 43189
 Ion Ratio Lower Upper
 75 100
 53 0.0 81.9 122.9#
 89 0.0 38.2 57.2#





#95
 Naphthalene
 Concen: Below Cal
 RT: 13.780 min Scan# 20
 Delta R.T. 0.000 min
 Lab File: VX025389.D
 Acq: 30 Nov 2021 10:56

Instrument : MSVOA_X
 ClientSampleId : VX1130W/BL01



Tgt Ion:128 Resp: 88

Ion	Ratio	Lower	Upper
128	100		
127	0.0	10.3	15.5#
129	0.0	8.8	13.2#

