

Data Path : Z:\voasrv\HPCHEM1\MSVOA_X\Data\VX113021\
 Data File : VX025389.D
 Acq On : 30 Nov 2021 10:56
 Operator : JC/MD
 Sample : VX1130WBL01
 Misc : 5.0mL/MSVOA_X/WATER
 ALS Vial : 4 Sample Multiplier: 1

Instrument :
 MSVOA_X
 ClientSampleId :
 VX1130WBL01

Quant Time: Dec 01 02:19:12 2021
 Quant Method : Z:\voasrv\HPCHEM1\MSVOA_X\Method\82X111721W.M
 Quant Title : SW846 8260
 QLast Update : Wed Nov 17 15:36:16 2021
 Response via : Initial Calibration

Compound	R.T.	QIon	Response	Conc	Units	Dev(Min)
Internal Standards						
1) Pentafluorobenzene	5.556	168	134262	50.000	ug/l	0.00
34) 1,4-Difluorobenzene	6.763	114	219970	50.000	ug/l	0.00
63) Chlorobenzene-d5	10.055	117	196893	50.000	ug/l	0.00
72) 1,4-Dichlorobenzene-d4	12.024	152	89860	50.000	ug/l	0.00
System Monitoring Compounds						
33) 1,2-Dichloroethane-d4	5.958	65	74804	52.857	ug/l	0.00
Spiked Amount	50.000	Range	78 - 117	Recovery	=	105.720%
35) Dibromofluoromethane	5.391	113	66898	49.566	ug/l	0.00
Spiked Amount	50.000	Range	75 - 124	Recovery	=	99.140%
50) Toluene-d8	8.653	98	252219	49.703	ug/l	0.00
Spiked Amount	50.000	Range	92 - 112	Recovery	=	99.400%
62) 4-Bromofluorobenzene	11.079	95	90414	47.097	ug/l	0.00
Spiked Amount	50.000	Range	83 - 123	Recovery	=	94.200%

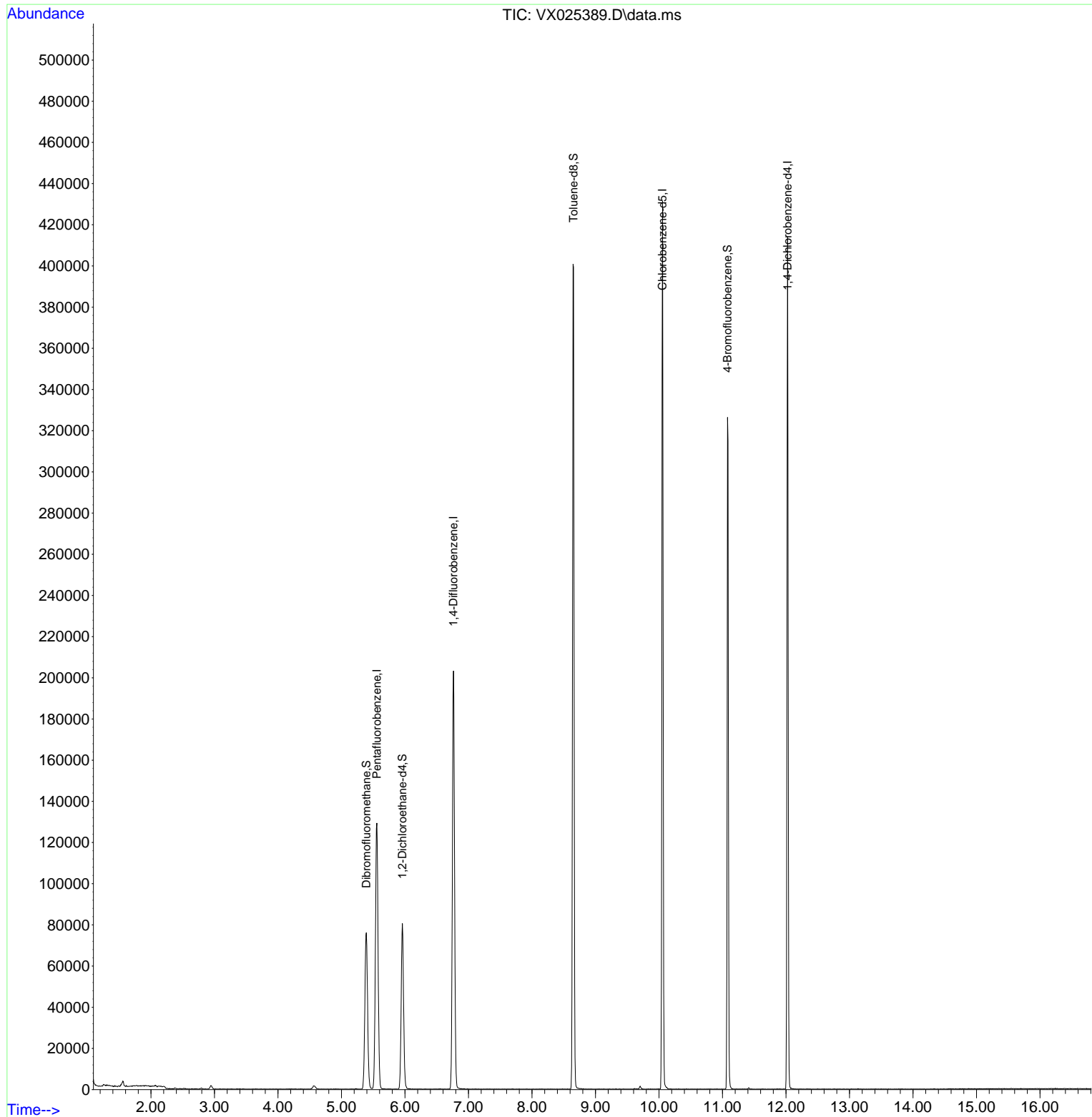
Target Compounds Qvalue

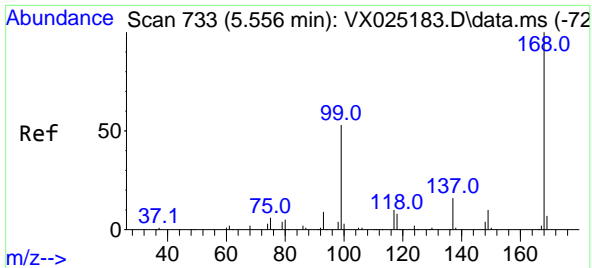
(#) = qualifier out of range (m) = manual integration (+) = signals summed

Data Path : Z:\voasrv\HPCHEM1\MSVOA_X\Data\VX113021\
Data File : VX025389.D
Acq On : 30 Nov 2021 10:56
Operator : JC/MD
Sample : VX1130WBL01
Misc : 5.0mL/MSVOA_X/WATER
ALS Vial : 4 Sample Multiplier: 1

Instrument :
MSVOA_X
ClientSampleId :
VX1130WBL01

Quant Time: Dec 01 02:19:12 2021
Quant Method : Z:\voasrv\HPCHEM1\MSVOA_X\Method\82X111721W.M
Quant Title : SW846 8260
QLast Update : Wed Nov 17 15:36:16 2021
Response via : Initial Calibration

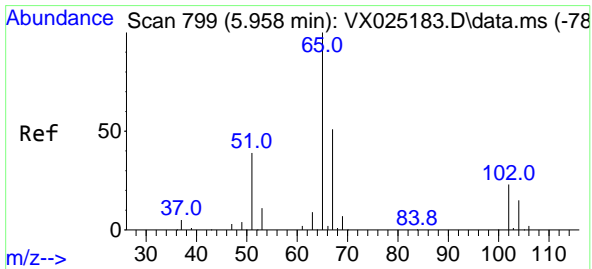
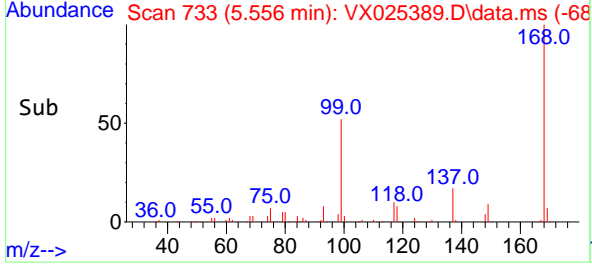
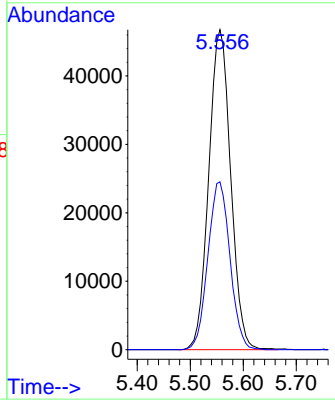
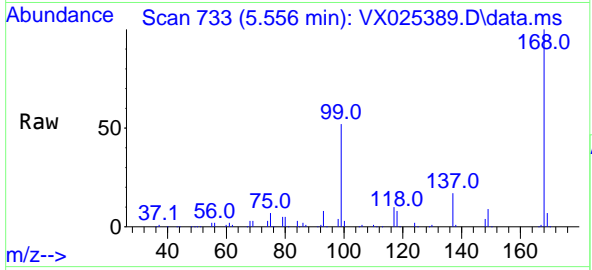




#1
 Pentafluorobenzene
 Concen: 50.000 ug/l
 RT: 5.556 min Scan# 711
 Delta R.T. -0.000 min
 Lab File: VX025389.D
 Acq: 30 Nov 2021 10:56

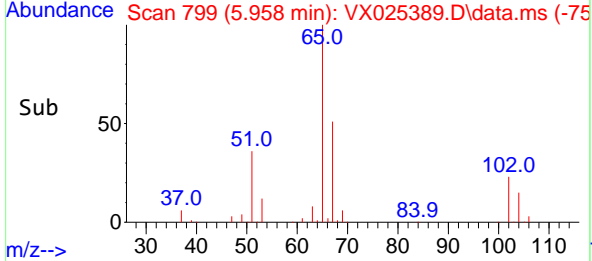
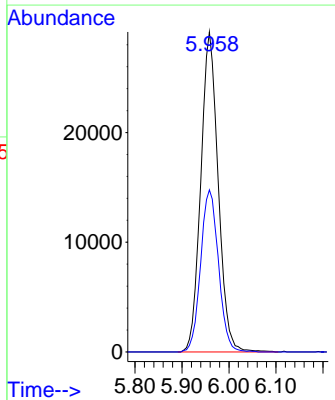
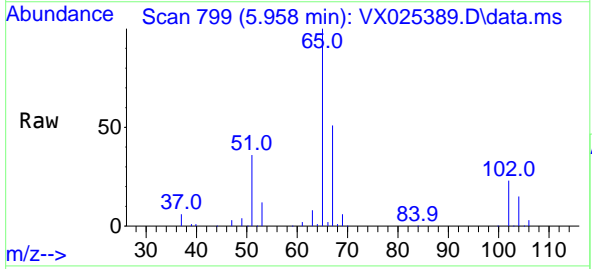
Instrument : MSVOA_X
 ClientSampleId : VX1130WBL01

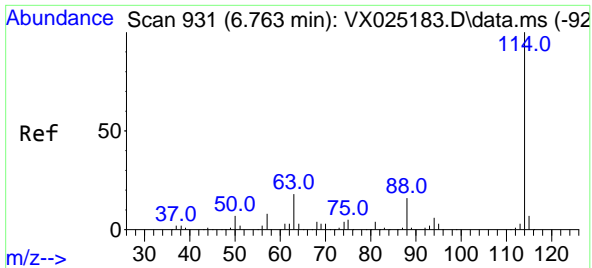
Tgt Ion:168 Resp: 134262
 Ion Ratio Lower Upper
 168 100
 99 52.4 46.4 69.6



#33
 1,2-Dichloroethane-d4
 Concen: 52.857 ug/l
 RT: 5.958 min Scan# 799
 Delta R.T. 0.000 min
 Lab File: VX025389.D
 Acq: 30 Nov 2021 10:56

Tgt Ion: 65 Resp: 74804
 Ion Ratio Lower Upper
 65 100
 67 52.0 0.0 101.0



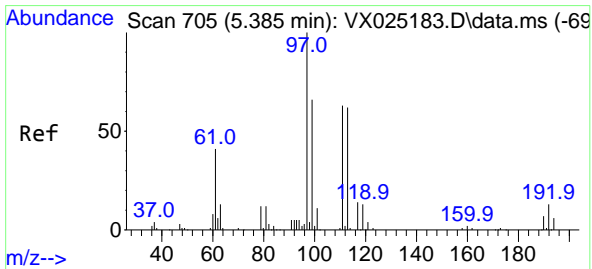
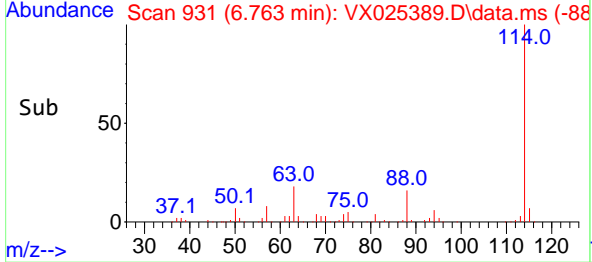
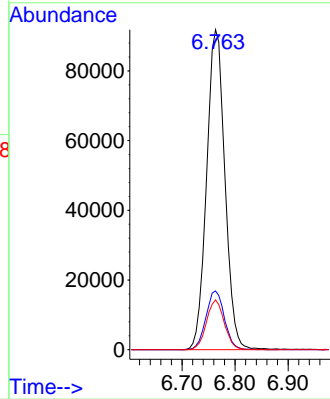
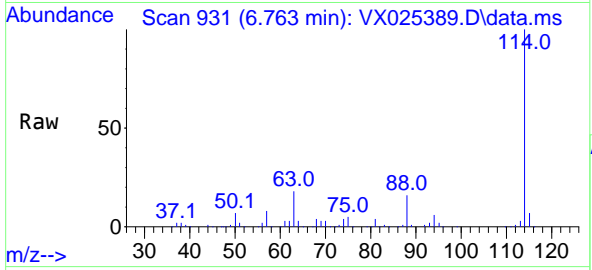


#34
 1,4-Difluorobenzene
 Concen: 50.000 ug/l
 RT: 6.763 min Scan# 911
 Delta R.T. 0.000 min
 Lab File: VX025389.D
 Acq: 30 Nov 2021 10:56

Instrument :
 MSVOA_X
 ClientSampleId :
 VX1130WBL01

Tgt Ion:114 Resp: 219970

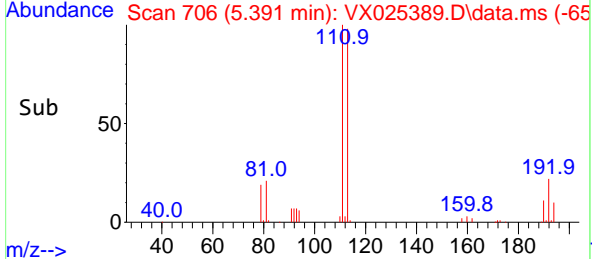
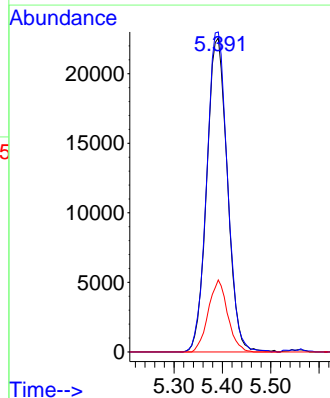
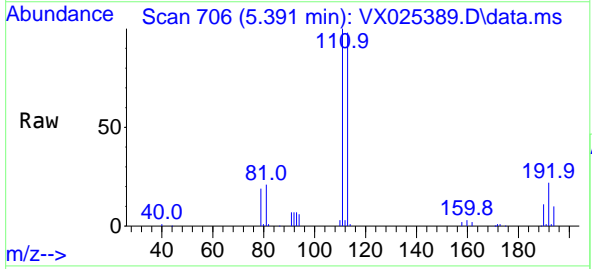
Ion	Ratio	Lower	Upper
114	100		
63	18.3	0.0	41.0
88	15.5	0.0	34.8

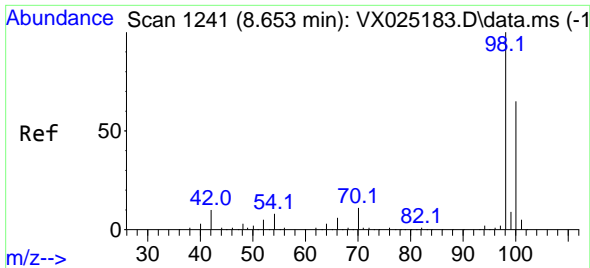


#35
 Dibromofluoromethane
 Concen: 49.566 ug/l
 RT: 5.391 min Scan# 706
 Delta R.T. 0.006 min
 Lab File: VX025389.D
 Acq: 30 Nov 2021 10:56

Tgt Ion:113 Resp: 66898

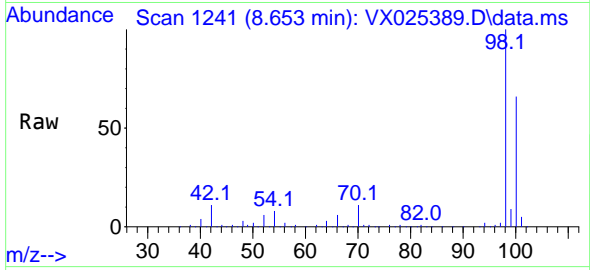
Ion	Ratio	Lower	Upper
113	100		
111	102.3	82.1	123.1
192	21.5	15.6	23.4



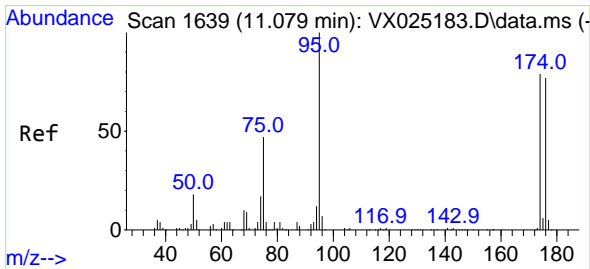
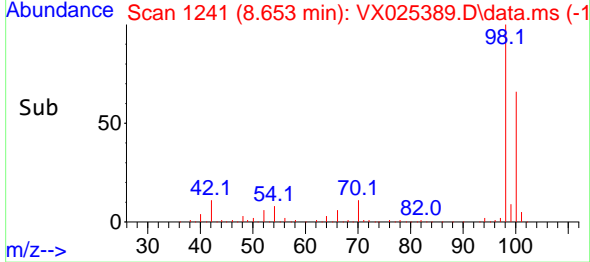
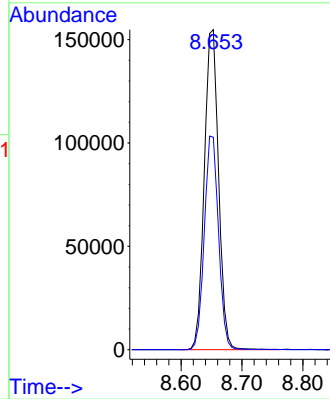


#50
 Toluene-d8
 Concen: 49.703 ug/l
 RT: 8.653 min Scan# 1241
 Delta R.T. -0.000 min
 Lab File: VX025389.D
 Acq: 30 Nov 2021 10:56

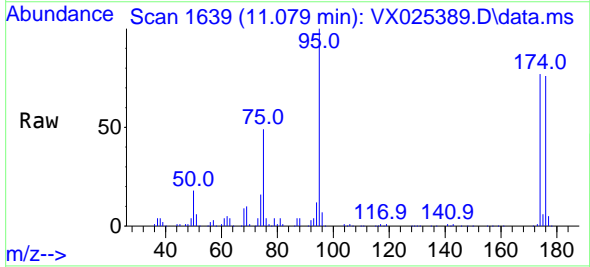
Instrument : MSVOA_X
 ClientSampleId : VX1130WBL01



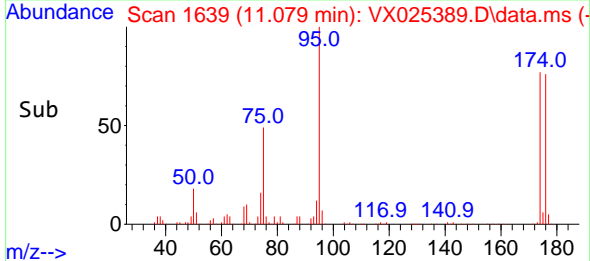
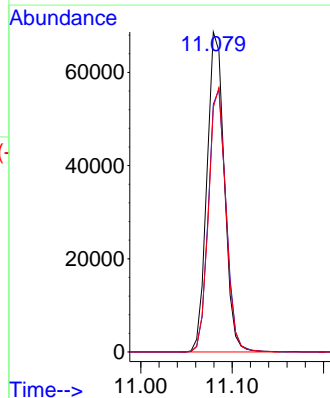
Tgt Ion: 98 Resp: 252219
 Ion Ratio Lower Upper
 98 100
 100 66.4 51.4 77.0

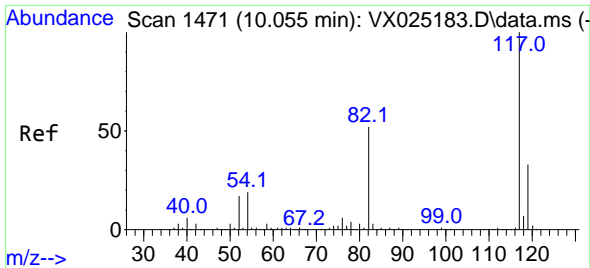


#62
 4-Bromofluorobenzene
 Concen: 47.097 ug/l
 RT: 11.079 min Scan# 1639
 Delta R.T. 0.000 min
 Lab File: VX025389.D
 Acq: 30 Nov 2021 10:56



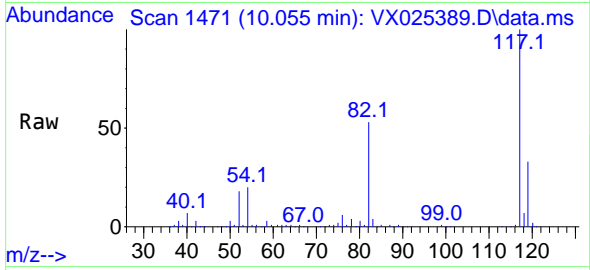
Tgt Ion: 95 Resp: 90414
 Ion Ratio Lower Upper
 95 100
 174 83.6 0.0 158.0
 176 82.6 0.0 153.6



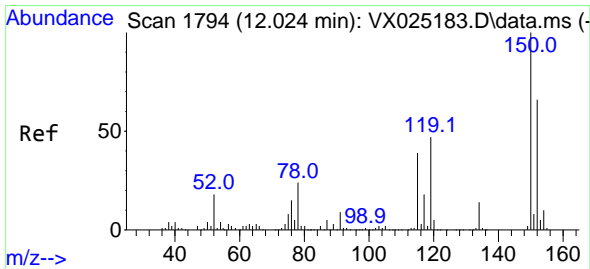
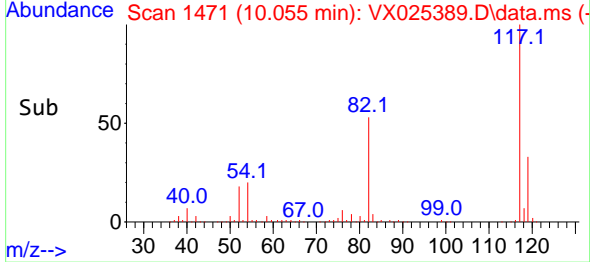
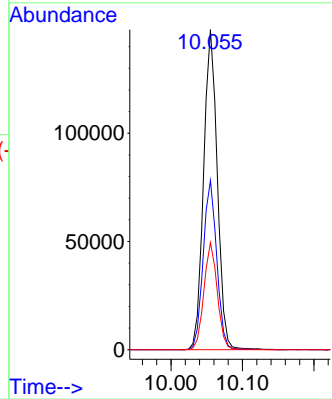


#63
 Chlorobenzene-d5
 Concen: 50.000 ug/l
 RT: 10.055 min Scan# 1471
 Delta R.T. 0.000 min
 Lab File: VX025389.D
 Acq: 30 Nov 2021 10:56

Instrument : MSVOA_X
 ClientSampleId : VX1130WBL01



Tgt Ion:117 Resp: 196893
 Ion Ratio Lower Upper
 117 100
 82 52.9 44.6 67.0
 119 33.5 24.8 37.2



#72
 1,4-Dichlorobenzene-d4
 Concen: 50.000 ug/l
 RT: 12.024 min Scan# 1794
 Delta R.T. 0.000 min
 Lab File: VX025389.D
 Acq: 30 Nov 2021 10:56

Tgt Ion:152 Resp: 89860
 Ion Ratio Lower Upper
 152 100
 115 57.5 43.3 129.8
 150 159.0 0.0 351.2

