

Data Path : Z:\voasrv\HPCHEM1\MSVOA\_X\Data\VX113022\  
 Data File : VX033142.D  
 Acq On : 30 Nov 2022 19:10  
 Operator : JC/MD  
 Sample : N5815-11  
 Misc : 5.0mL/MSVOA\_X/WATER  
 ALS Vial : 23 Sample Multiplier: 1

Instrument :  
 MSVOA\_X  
 ClientSampleId :  
 MW-08

Quant Time: Dec 01 00:24:38 2022  
 Quant Method : Z:\voasrv\HPCHEM1\MSVOA\_X\Method\82X112222W.M  
 Quant Title : SW846 8260  
 QLast Update : Tue Nov 22 13:58:46 2022  
 Response via : Initial Calibration

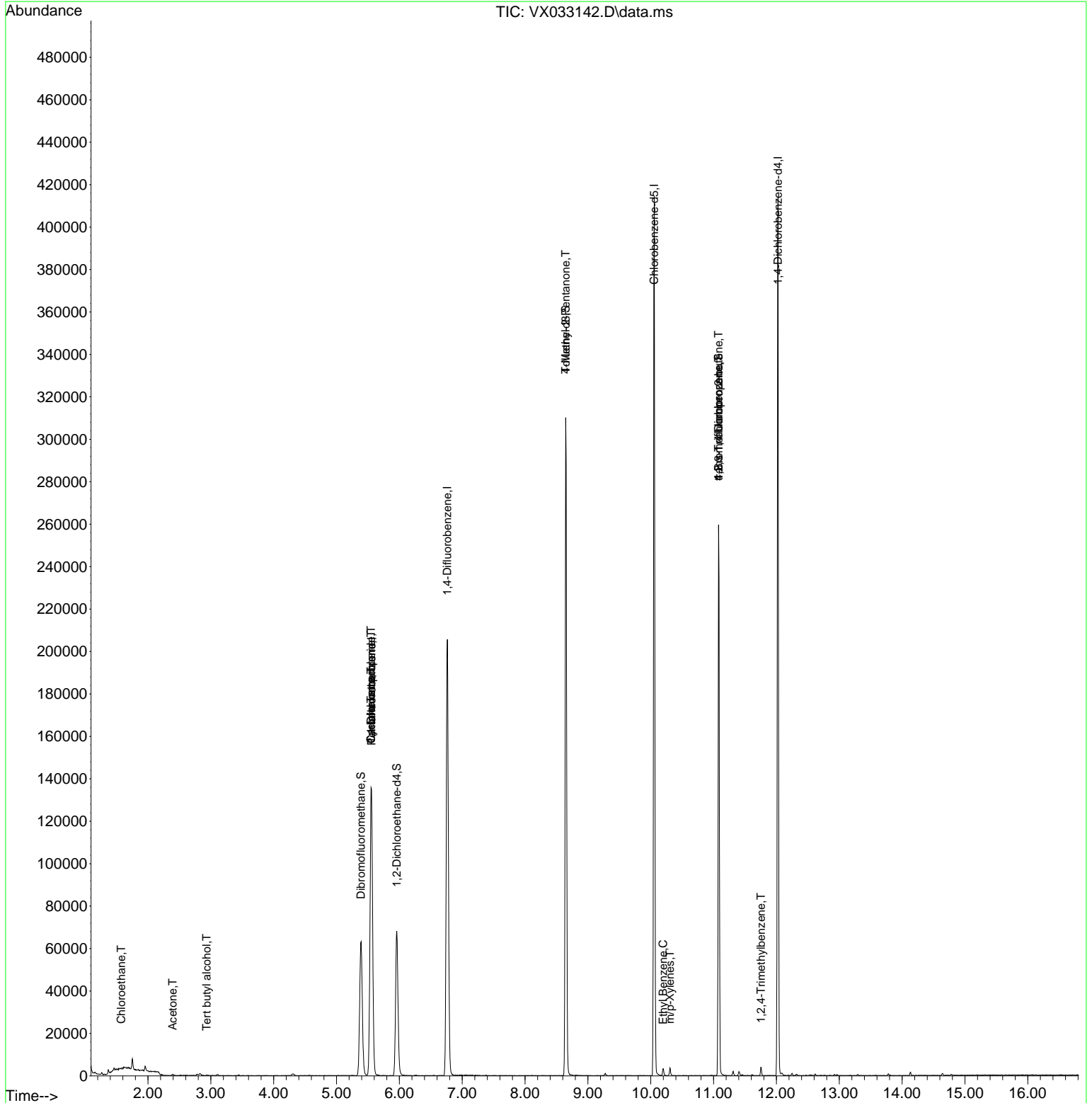
Compound	R.T.	QIon	Response	Conc	Units	Dev(Min)
-----						
Internal Standards						
1) Pentafluorobenzene	5.556	168	129592	50.000	ug/l	0.00
34) 1,4-Difluorobenzene	6.763	114	211360	50.000	ug/l	0.00
63) Chlorobenzene-d5	10.055	117	186007	50.000	ug/l	0.00
72) 1,4-Dichlorobenzene-d4	12.024	152	85541	50.000	ug/l	0.00
System Monitoring Compounds						
33) 1,2-Dichloroethane-d4	5.958	65	69753	55.424	ug/l	0.00
Spiked Amount	50.000	Range 78 - 117	Recovery	=	110.840%	
35) Dibromofluoromethane	5.385	113	54542	45.773	ug/l	0.00
Spiked Amount	50.000	Range 75 - 124	Recovery	=	91.540%	
50) Toluene-d8	8.647	98	182594	50.972	ug/l	0.00
Spiked Amount	50.000	Range 92 - 112	Recovery	=	101.940%	
62) 4-Bromofluorobenzene	11.079	95	67236	42.955	ug/l	0.00
Spiked Amount	50.000	Range 83 - 123	Recovery	=	85.920%	
Target Compounds						
						Qvalue
6) Chloroethane	1.575	64	411	0.424	ug/l #	59
11) Tert butyl alcohol	2.935	59	61	0.305	ug/l #	72
16) Acetone	2.392	43	719	1.220	ug/l	98
20) Methylene Chloride	2.800	84	72	Below Cal	#	45
31) Cyclohexane	5.550	56	2798	1.368	ug/l #	1
36) 1,1-Dichloropropene	5.550	75	9916	5.204	ug/l #	50
38) Carbon Tetrachloride	5.550	117	13268	6.277	ug/l #	15
51) 4-Methyl-2-Pentanone	8.647	43	840	0.495	ug/l #	1
67) Ethyl Benzene	10.195	91	2162	0.329	ug/l #	76
68) m/p-Xylenes	10.305	106	879	0.341	ug/l	96
76) 1,2,3-Trichloropropane	11.079	75	35714	22.046	ug/l #	37
81) trans-1,4-Dichloro-2-b...	11.079	75	35714	71.658	ug/l #	6
84) 1,2,4-Trimethylbenzene	11.756	105	2110	0.412	ug/l	96

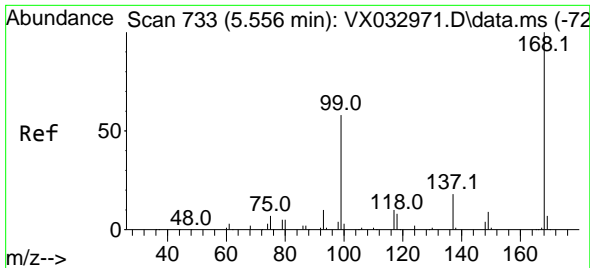
(#) = qualifier out of range (m) = manual integration (+) = signals summed

Data Path : Z:\voasrv\HPCHEM1\MSVOA\_X\Data\VX113022\  
 Data File : VX033142.D  
 Acq On : 30 Nov 2022 19:10  
 Operator : JC/MD  
 Sample : N5815-11  
 Misc : 5.0mL/MSVOA\_X/WATER  
 ALS Vial : 23 Sample Multiplier: 1

Instrument :  
 MSVOA\_X  
 ClientSampleId :  
 MW-08

Quant Time: Dec 01 00:24:38 2022  
 Quant Method : Z:\voasrv\HPCHEM1\MSVOA\_X\Method\82X112222W.M  
 Quant Title : SW846 8260  
 QLast Update : Tue Nov 22 13:58:46 2022  
 Response via : Initial Calibration

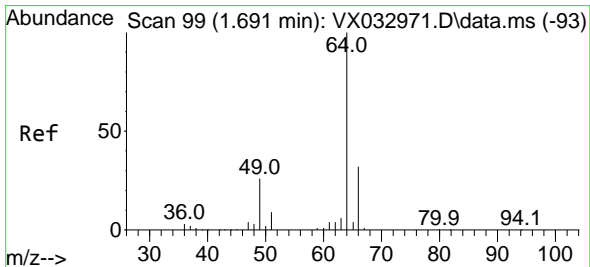
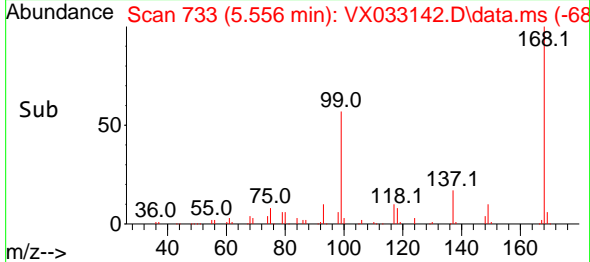
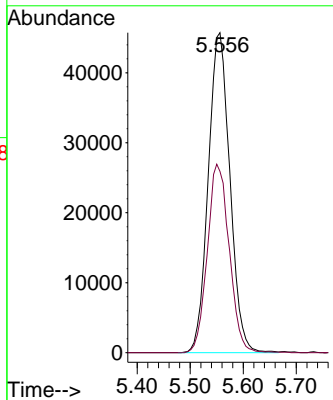
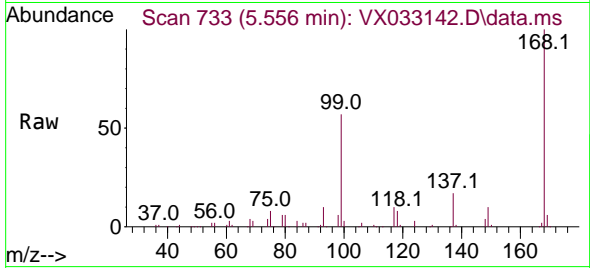




#1  
 Pentafluorobenzene  
 Concen: 50.000 ug/l  
 RT: 5.556 min Scan# 71  
 Delta R.T. -0.000 min  
 Lab File: VX033142.D  
 Acq: 30 Nov 2022 19:10

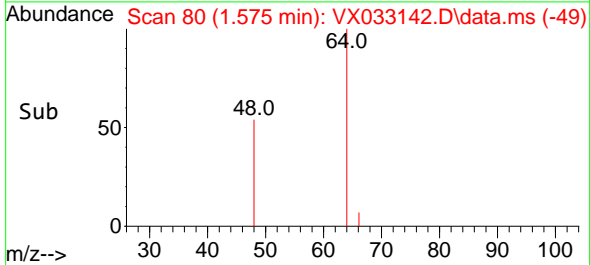
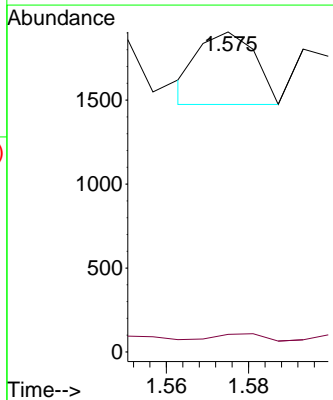
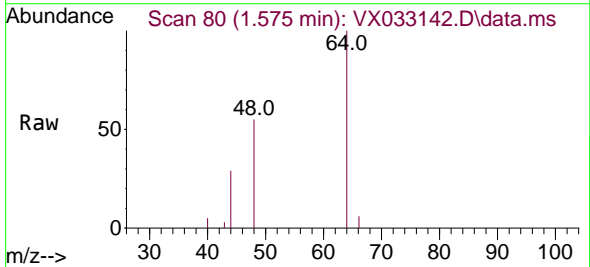
Instrument :  
 MSVOA\_X  
 ClientSampleId :  
 MW-08

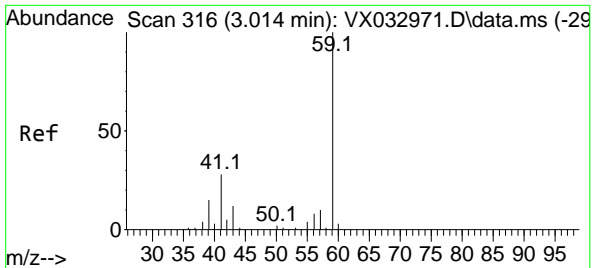
Tgt Ion:168 Resp: 129592  
 Ion Ratio Lower Upper  
 168 100  
 99 56.6 46.1 69.1



#6  
 Chloroethane  
 Concen: 0.424 ug/l  
 RT: 1.575 min Scan# 80  
 Delta R.T. -0.110 min  
 Lab File: VX033142.D  
 Acq: 30 Nov 2022 19:10

Tgt Ion: 64 Resp: 411  
 Ion Ratio Lower Upper  
 64 100  
 66 9.3 26.0 39.0#

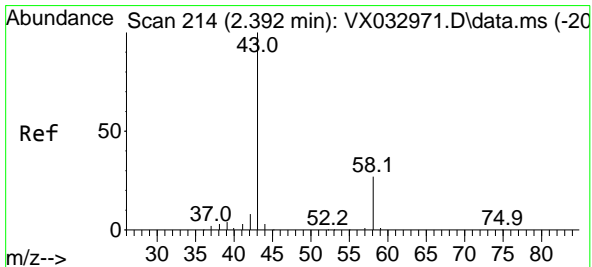
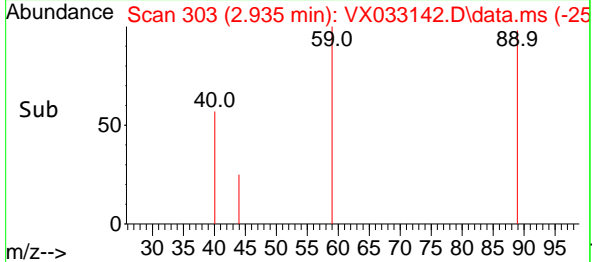
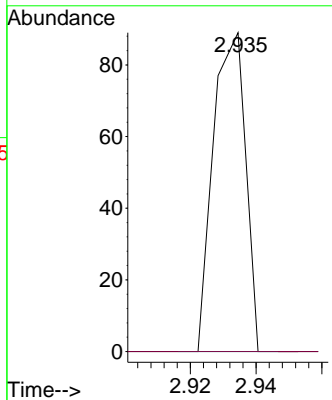
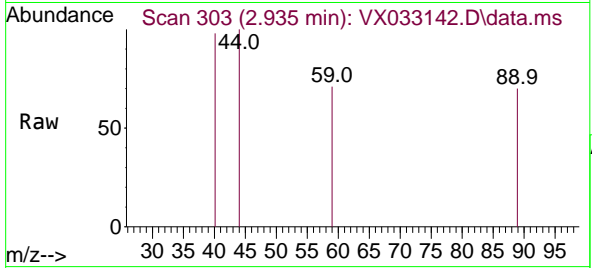




#11  
 Tert butyl alcohol  
 Concen: 0.305 ug/l  
 RT: 2.935 min Scan# 303  
 Delta R.T. -0.030 min  
 Lab File: VX033142.D  
 Acq: 30 Nov 2022 19:10

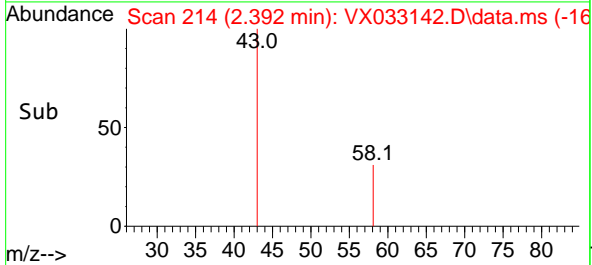
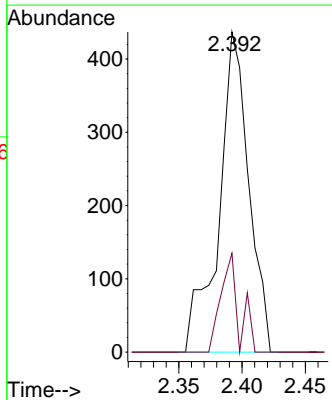
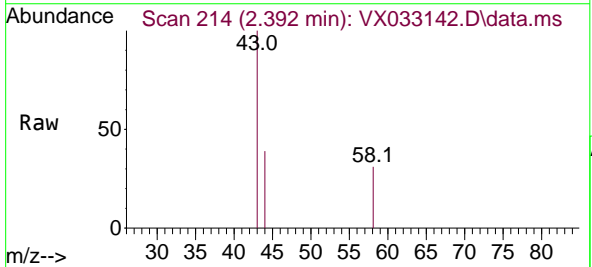
Instrument : MSVOA\_X  
 ClientSampleId : MW-08

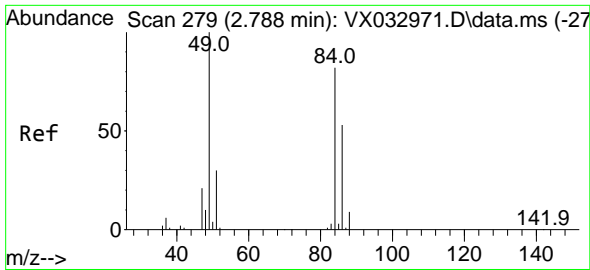
Tgt Ion: 59 Resp: 61  
 Ion Ratio Lower Upper  
 59 100  
 57 0.0 8.2 12.4#



#16  
 Acetone  
 Concen: 1.220 ug/l  
 RT: 2.392 min Scan# 214  
 Delta R.T. 0.012 min  
 Lab File: VX033142.D  
 Acq: 30 Nov 2022 19:10

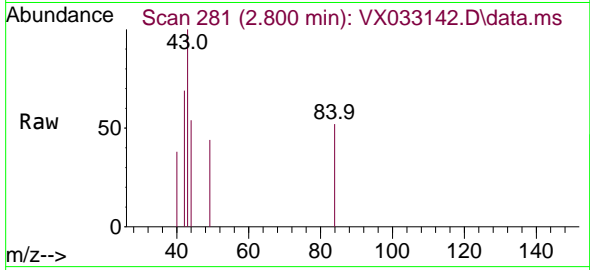
Tgt Ion: 43 Resp: 719  
 Ion Ratio Lower Upper  
 43 100  
 58 30.9 23.8 35.8





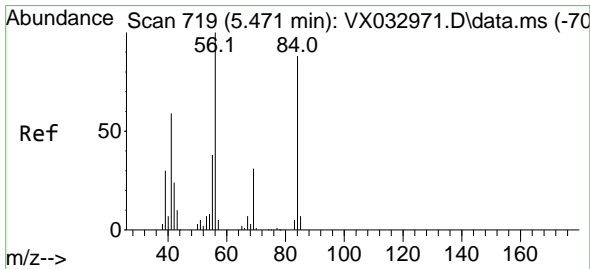
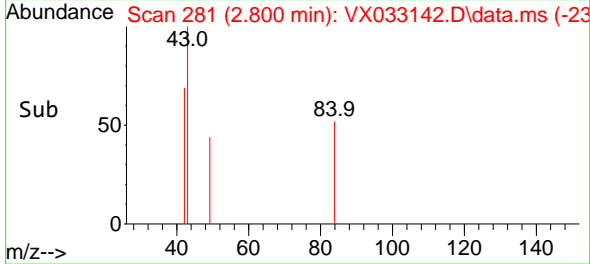
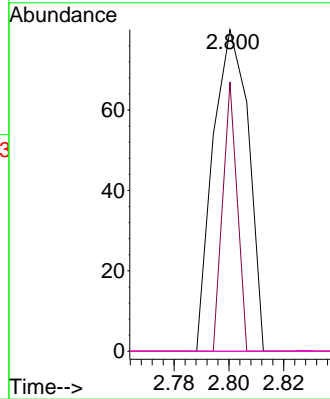
#20  
 Methylene Chloride  
 Concen: Below Cal  
 RT: 2.800 min Scan# 21  
 Delta R.T. 0.012 min  
 Lab File: VX033142.D  
 Acq: 30 Nov 2022 19:10

Instrument :  
 MSVOA\_X  
 ClientSampleId :  
 MW-08



Tgt Ion: 84 Resp: 72

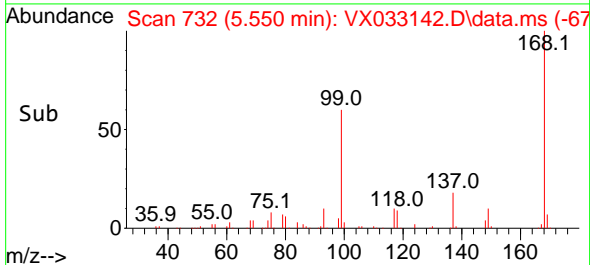
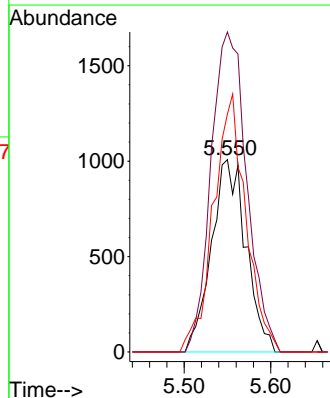
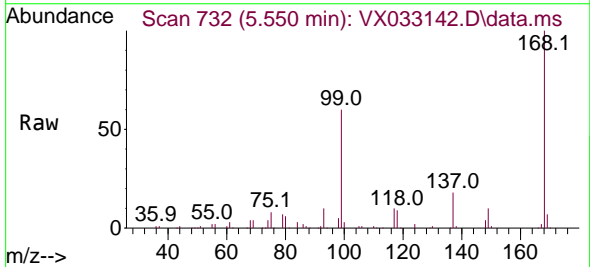
Ion	Ratio	Lower	Upper
84	100		
49	83.8	101.0	151.6#
51	0.0	31.1	46.7#
86	0.0	52.3	78.5#

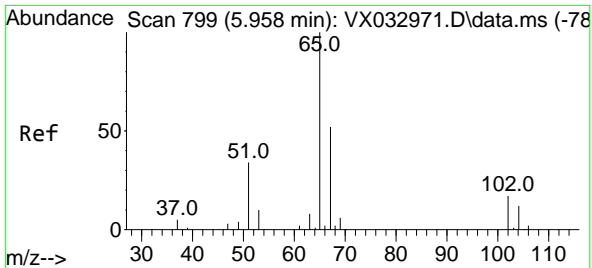


#31  
 Cyclohexane  
 Concen: 1.368 ug/l  
 RT: 5.550 min Scan# 732  
 Delta R.T. 0.080 min  
 Lab File: VX033142.D  
 Acq: 30 Nov 2022 19:10

Tgt Ion: 56 Resp: 2798

Ion	Ratio	Lower	Upper
56	100		
69	166.4	24.1	36.1#
84	123.6	66.9	100.3#

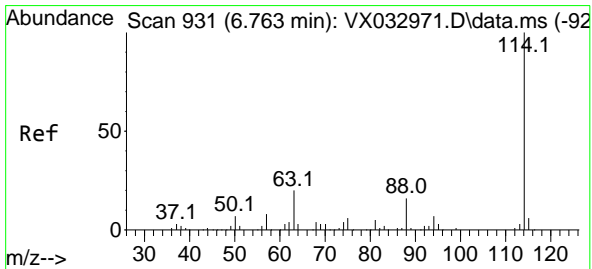
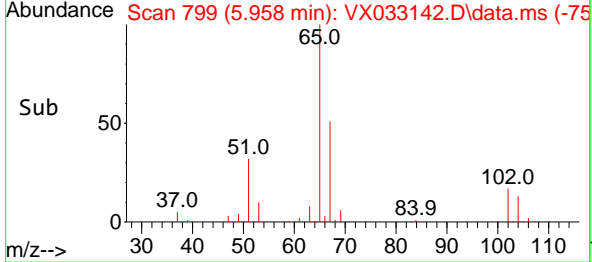
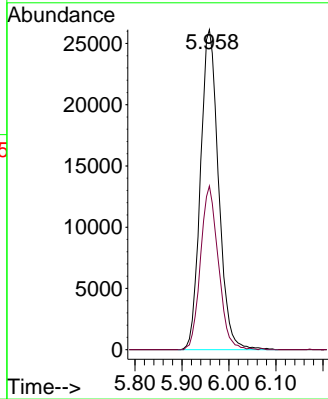
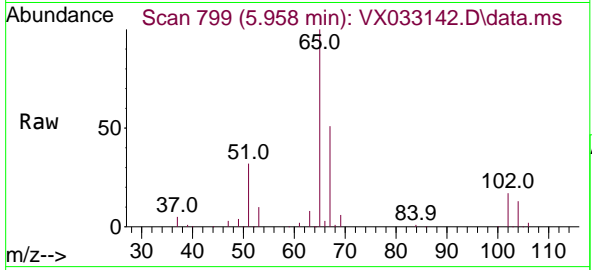




#33  
 1,2-Dichloroethane-d4  
 Concen: 55.424 ug/l  
 RT: 5.958 min Scan# 799  
 Delta R.T. 0.000 min  
 Lab File: VX033142.D  
 Acq: 30 Nov 2022 19:10

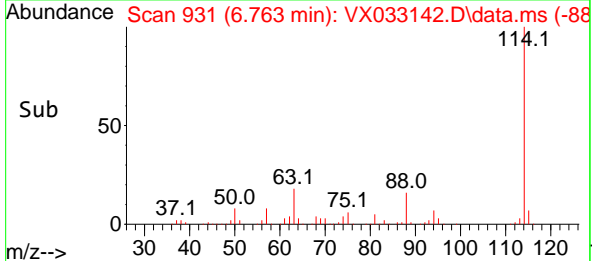
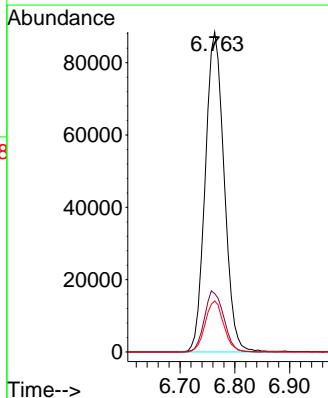
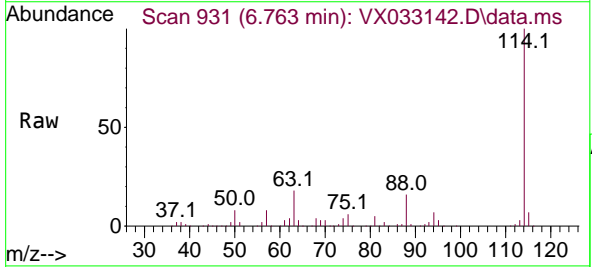
Instrument : MSVOA\_X  
 ClientSampleId : MW-08

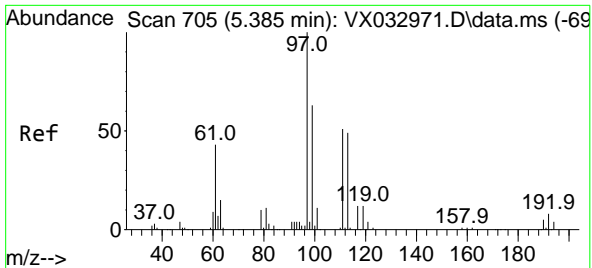
Tgt Ion: 65 Resp: 69753  
 Ion Ratio Lower Upper  
 65 100  
 67 50.4 0.0 101.8



#34  
 1,4-Difluorobenzene  
 Concen: 50.000 ug/l  
 RT: 6.763 min Scan# 931  
 Delta R.T. 0.000 min  
 Lab File: VX033142.D  
 Acq: 30 Nov 2022 19:10

Tgt Ion: 114 Resp: 211360  
 Ion Ratio Lower Upper  
 114 100  
 63 18.3 0.0 41.6  
 88 16.0 0.0 33.4

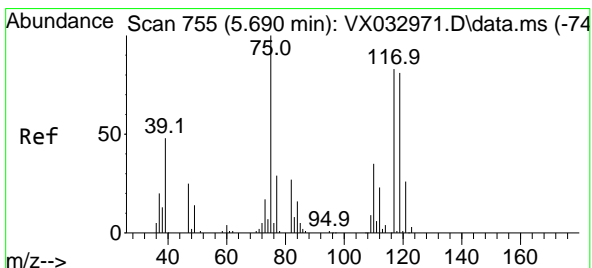
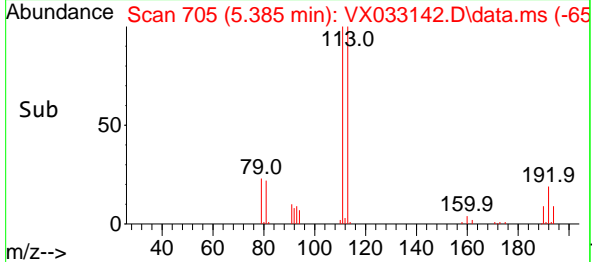
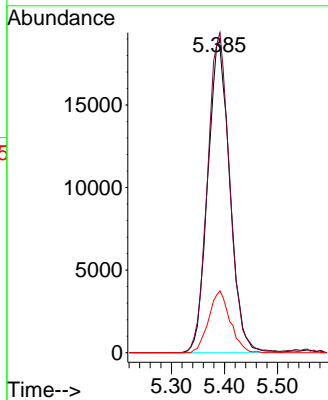
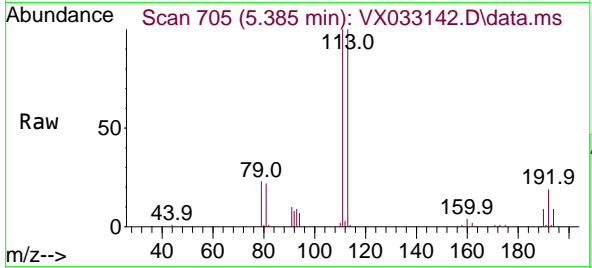




#35  
 Dibromofluoromethane  
 Concen: 45.773 ug/l  
 RT: 5.385 min Scan# 705  
 Delta R.T. 0.000 min  
 Lab File: VX033142.D  
 Acq: 30 Nov 2022 19:10

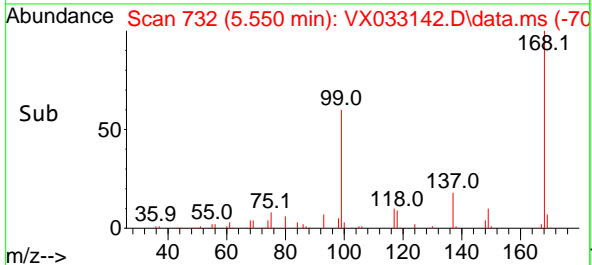
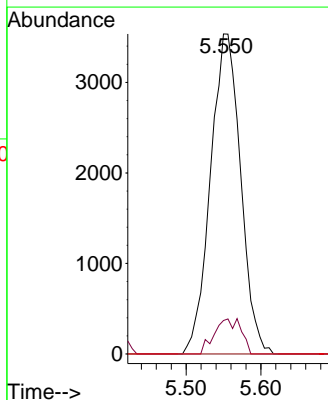
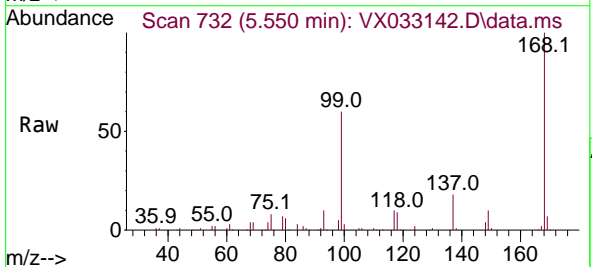
Instrument : MSVOA\_X  
 ClientSampleId : MW-08

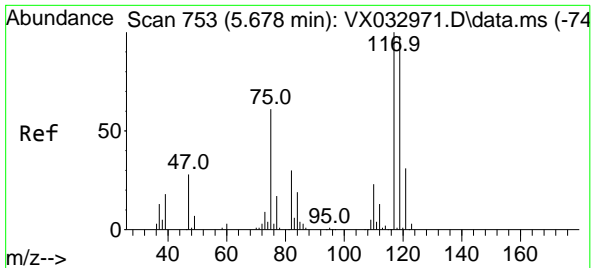
Tgt Ion	Resp	Lower	Upper
113	100		
111	103.2	82.4	123.6
192	19.2	15.4	23.2



#36  
 1,1-Dichloropropene  
 Concen: 5.204 ug/l  
 RT: 5.550 min Scan# 732  
 Delta R.T. -0.146 min  
 Lab File: VX033142.D  
 Acq: 30 Nov 2022 19:10

Tgt Ion	Resp	Lower	Upper
75	100		
110	9.7	18.4	55.2#
77	0.0	24.5	36.7#

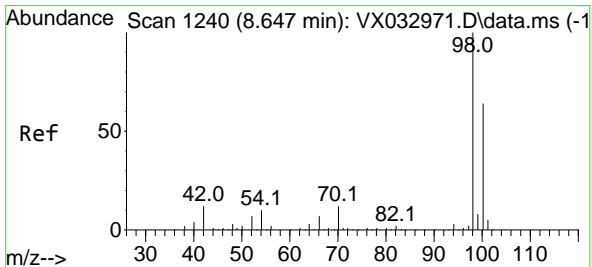
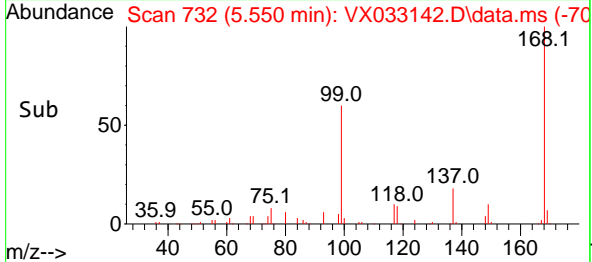
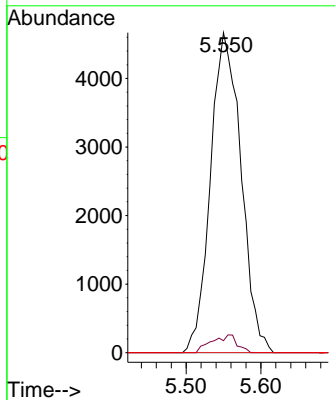
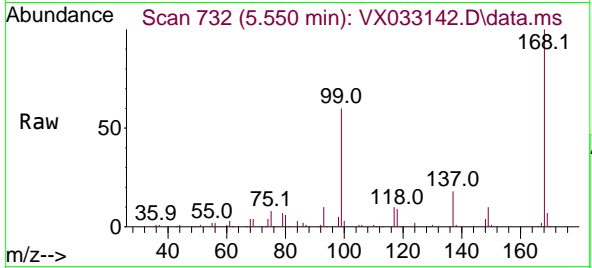




#38  
 Carbon Tetrachloride  
 Concen: 6.277 ug/l  
 RT: 5.550 min Scan# 711  
 Delta R.T. -0.134 min  
 Lab File: VX033142.D  
 Acq: 30 Nov 2022 19:10

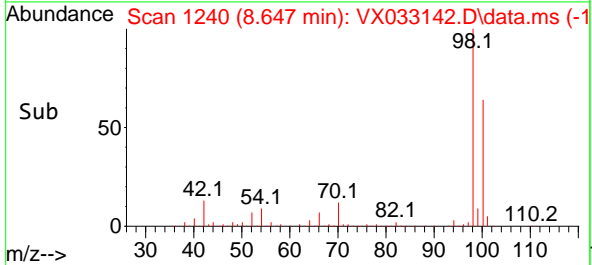
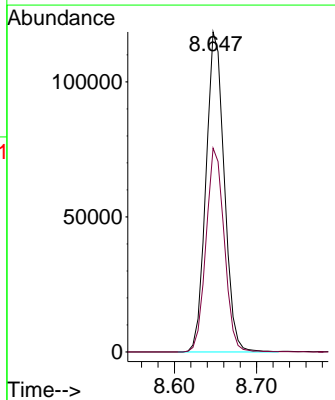
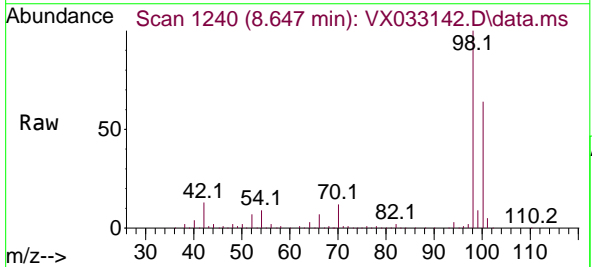
Instrument : MSVOA\_X  
 ClientSampleId : MW-08

Tgt Ion	Resp	Lower	Upper
117	13268		
119	3.8	77.2	115.8#
121	0.0	25.8	38.6#

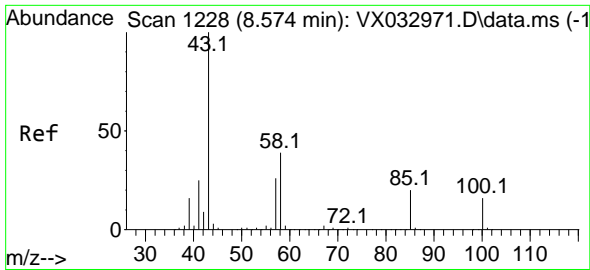


#50  
 Toluene-d8  
 Concen: 50.972 ug/l  
 RT: 8.647 min Scan# 1240  
 Delta R.T. -0.006 min  
 Lab File: VX033142.D  
 Acq: 30 Nov 2022 19:10

Tgt Ion	Resp	Lower	Upper
98	182594		
100	63.6	50.9	76.3



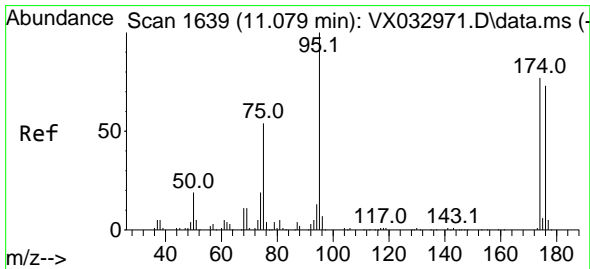
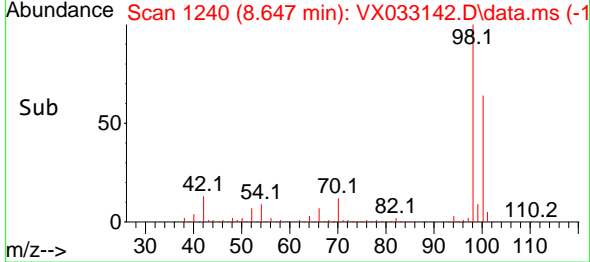
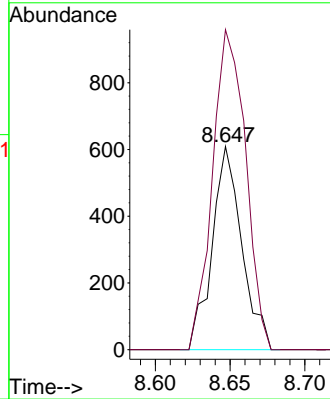
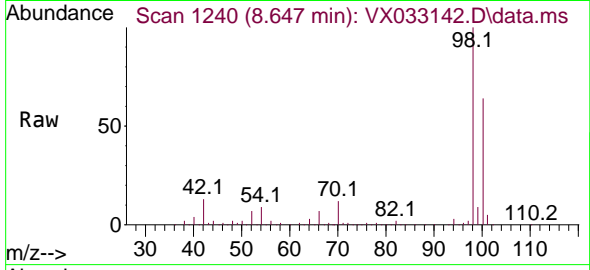




#51  
 4-Methyl-2-Pentanone  
 Concen: 0.495 ug/l  
 RT: 8.647 min Scan# 11  
 Delta R.T. 0.073 min  
 Lab File: VX033142.D  
 Acq: 30 Nov 2022 19:10

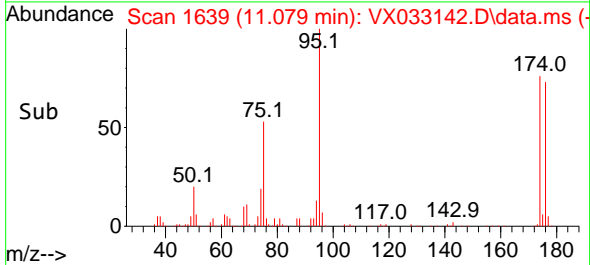
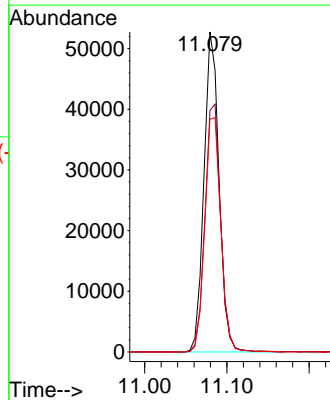
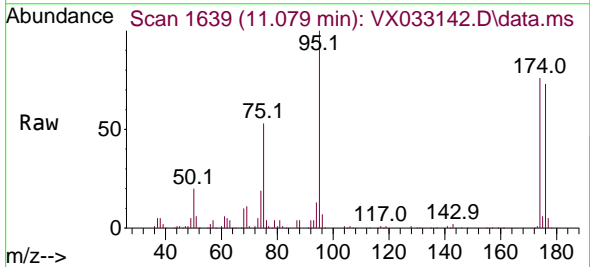
Instrument :  
 MSVOA\_X  
 ClientSampleId :  
 MW-08

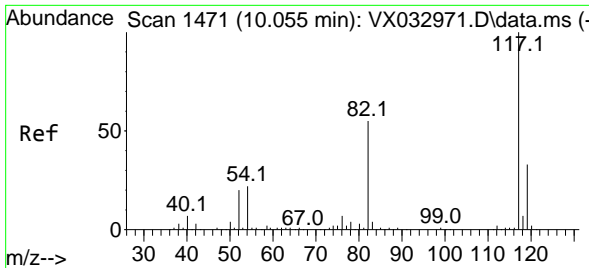
Tgt Ion: 43 Resp: 840  
 Ion Ratio Lower Upper  
 43 100  
 58 176.2 30.9 46.3#



#62  
 4-Bromofluorobenzene  
 Concen: 42.955 ug/l  
 RT: 11.079 min Scan# 1639  
 Delta R.T. 0.000 min  
 Lab File: VX033142.D  
 Acq: 30 Nov 2022 19:10

Tgt Ion: 95 Resp: 67236  
 Ion Ratio Lower Upper  
 95 100  
 174 80.7 0.0 164.0  
 176 77.7 0.0 154.4



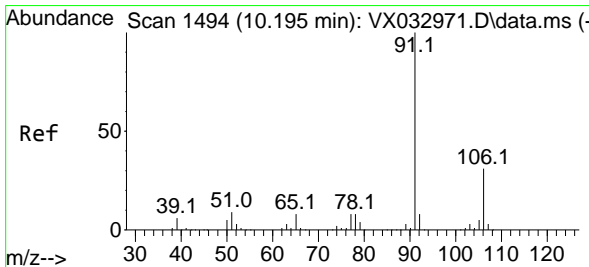
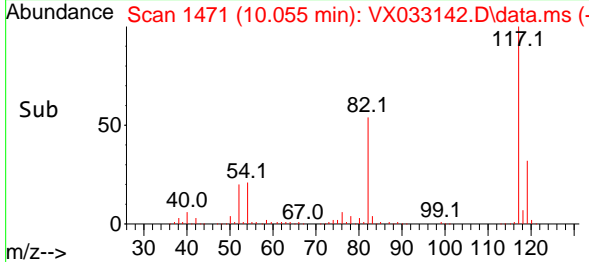
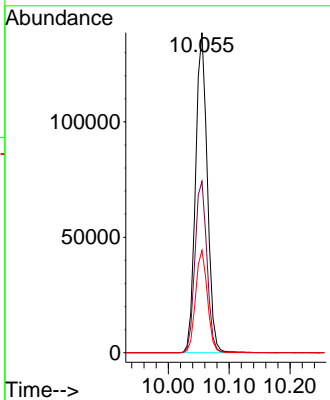
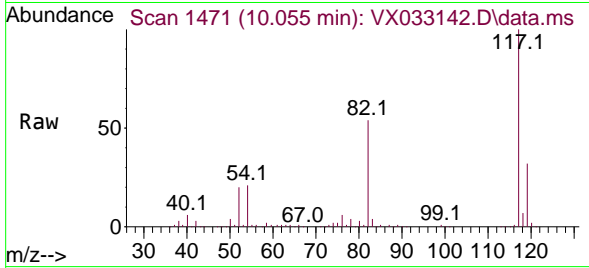


#63  
 Chlorobenzene-d5  
 Concen: 50.000 ug/l  
 RT: 10.055 min Scan# 14  
 Delta R.T. 0.000 min  
 Lab File: VX033142.D  
 Acq: 30 Nov 2022 19:10

**Instrument :**  
 MSVOA\_X  
**ClientSampleId :**  
 MW-08

Tgt Ion:117 Resp: 186007

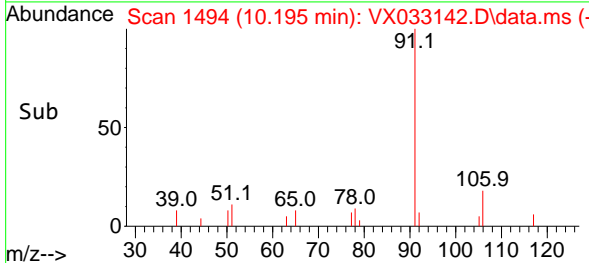
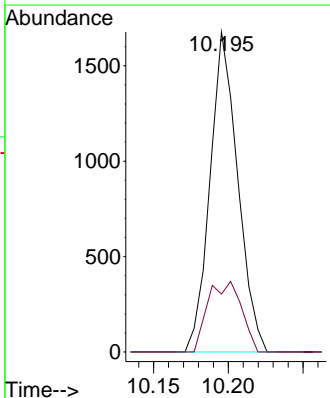
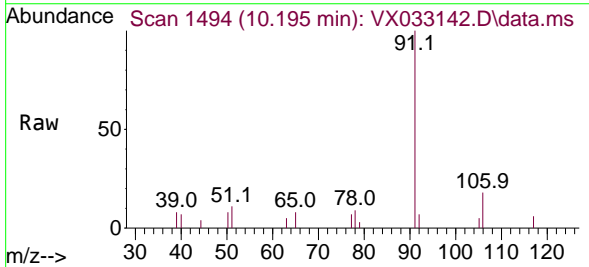
Ion	Ratio	Lower	Upper
117	100		
82	53.6	44.3	66.5
119	32.0	25.7	38.5

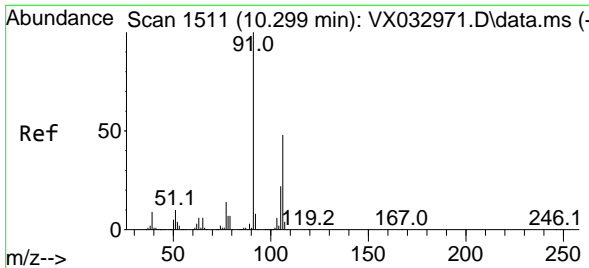


#67  
 Ethyl Benzene  
 Concen: 0.329 ug/l  
 RT: 10.195 min Scan# 1494  
 Delta R.T. 0.000 min  
 Lab File: VX033142.D  
 Acq: 30 Nov 2022 19:10

Tgt Ion: 91 Resp: 2162

Ion	Ratio	Lower	Upper
91	100		
106	18.1	25.0	37.6#

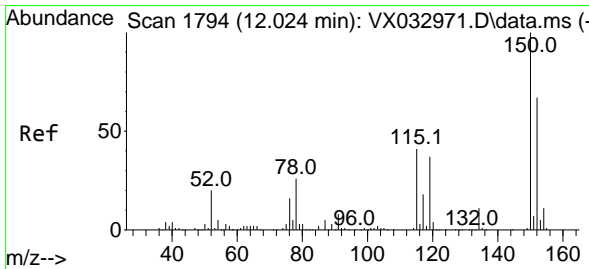
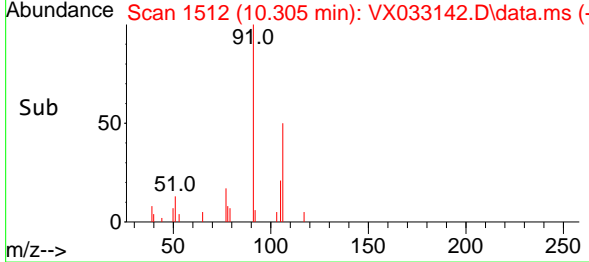
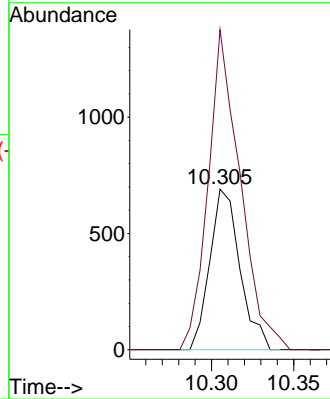
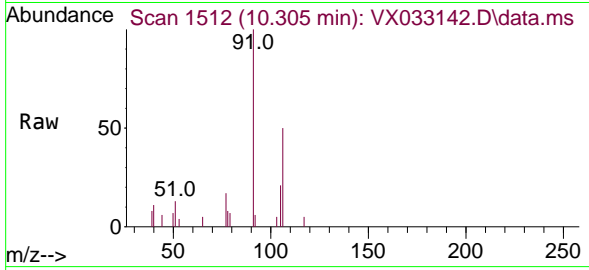




#68  
 m/p-Xylenes  
 Concen: 0.341 ug/l  
 RT: 10.305 min Scan# 1512  
 Delta R.T. 0.000 min  
 Lab File: VX033142.D  
 Acq: 30 Nov 2022 19:10

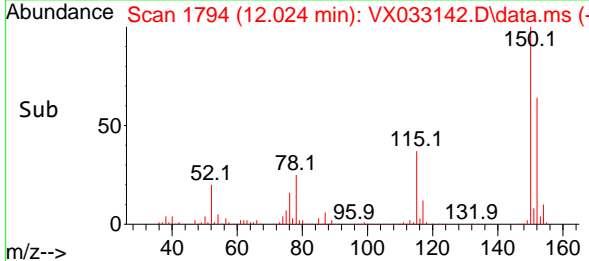
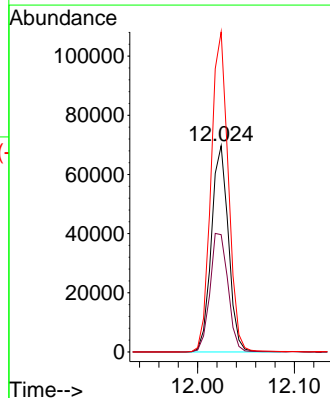
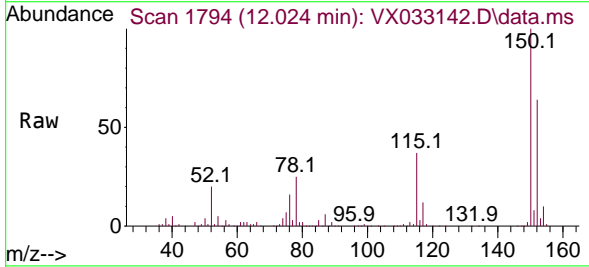
Instrument :  
 MSVOA\_X  
 ClientSampleId :  
 MW-08

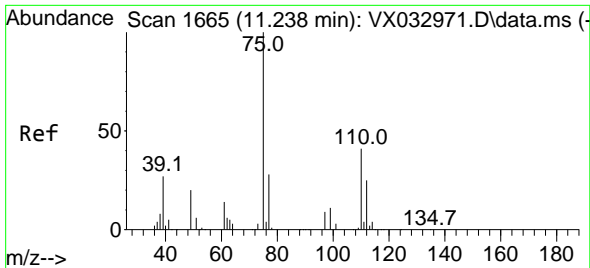
Tgt Ion:106 Resp: 879  
 Ion Ratio Lower Upper  
 106 100  
 91 212.4 164.5 246.7



#72  
 1,4-Dichlorobenzene-d4  
 Concen: 50.000 ug/l  
 RT: 12.024 min Scan# 1794  
 Delta R.T. 0.000 min  
 Lab File: VX033142.D  
 Acq: 30 Nov 2022 19:10

Tgt Ion:152 Resp: 85541  
 Ion Ratio Lower Upper  
 152 100  
 115 60.7 44.0 132.0  
 150 157.3 0.0 351.8

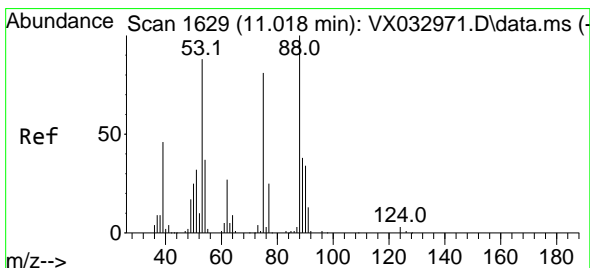
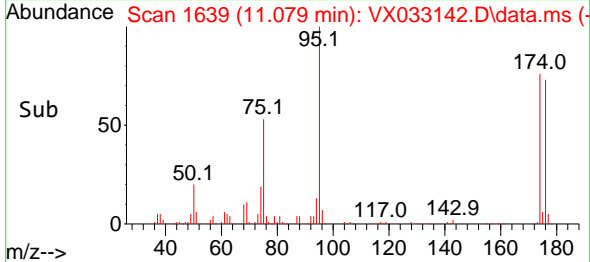
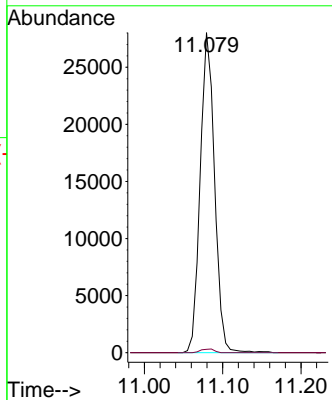
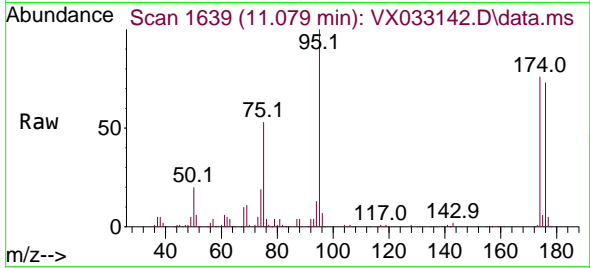




#76  
 1,2,3-Trichloropropane  
 Concen: 22.046 ug/l  
 RT: 11.079 min Scan# 1639  
 Delta R.T. -0.165 min  
 Lab File: VX033142.D  
 Acq: 30 Nov 2022 19:10

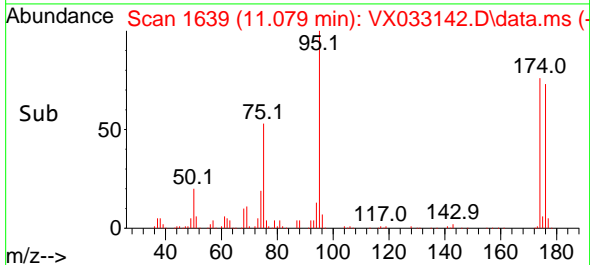
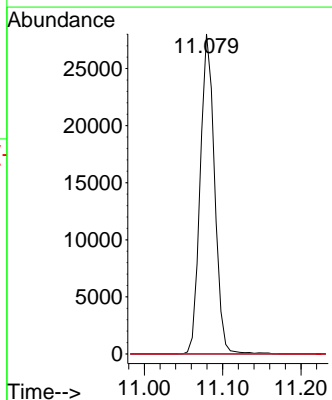
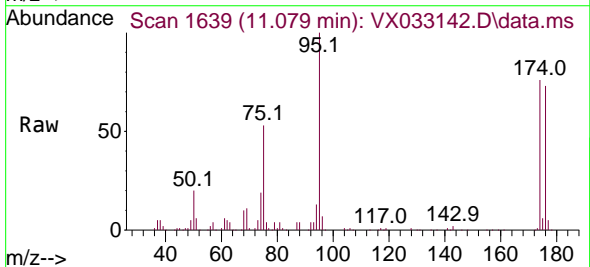
Instrument : MSVOA\_X  
 ClientSampleId : MW-08

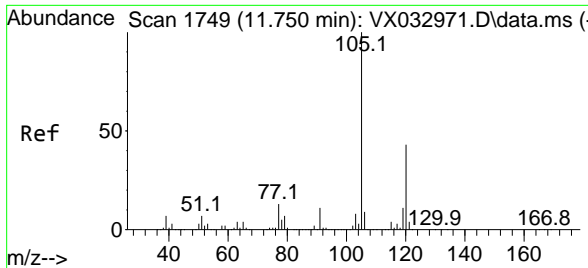
Tgt Ion: 75 Resp: 35714  
 Ion Ratio Lower Upper  
 75 100  
 77 1.1 20.0 60.0#



#81  
 trans-1,4-Dichloro-2-butene  
 Concen: 71.658 ug/l  
 RT: 11.079 min Scan# 1639  
 Delta R.T. 0.061 min  
 Lab File: VX033142.D  
 Acq: 30 Nov 2022 19:10

Tgt Ion: 75 Resp: 35714  
 Ion Ratio Lower Upper  
 75 100  
 53 0.0 86.9 130.3#  
 89 0.0 38.3 57.5#





#84  
 1,2,4-Trimethylbenzene  
 Concen: 0.412 ug/l  
 RT: 11.756 min Scan# 11  
 Delta R.T. 0.006 min  
 Lab File: VX033142.D  
 Acq: 30 Nov 2022 19:10

Instrument : MSVOA\_X  
 ClientSampleId : MW-08

Tgt Ion:105 Resp: 2110

Ion	Ratio	Lower	Upper
105	100		
120	46.5	21.9	65.5

