

Data Path : Z:\voasrv\HPCHEM1\MSVOA\_X\Data\VX120122\  
 Data File : VX033158.D  
 Acq On : 01 Dec 2022 13:13  
 Operator : JC/MD  
 Sample : N5815-28  
 Misc : 5.0mL/MSVOA\_X/WATER  
 ALS Vial : 13 Sample Multiplier: 1

Instrument :  
 MSVOA\_X  
 ClientSampleId :  
 TB-2022-11-29

Quant Time: Dec 02 00:50:42 2022  
 Quant Method : Z:\voasrv\HPCHEM1\MSVOA\_X\Method\82X112222W.M  
 Quant Title : SW846 8260  
 QLast Update : Tue Nov 22 13:58:46 2022  
 Response via : Initial Calibration

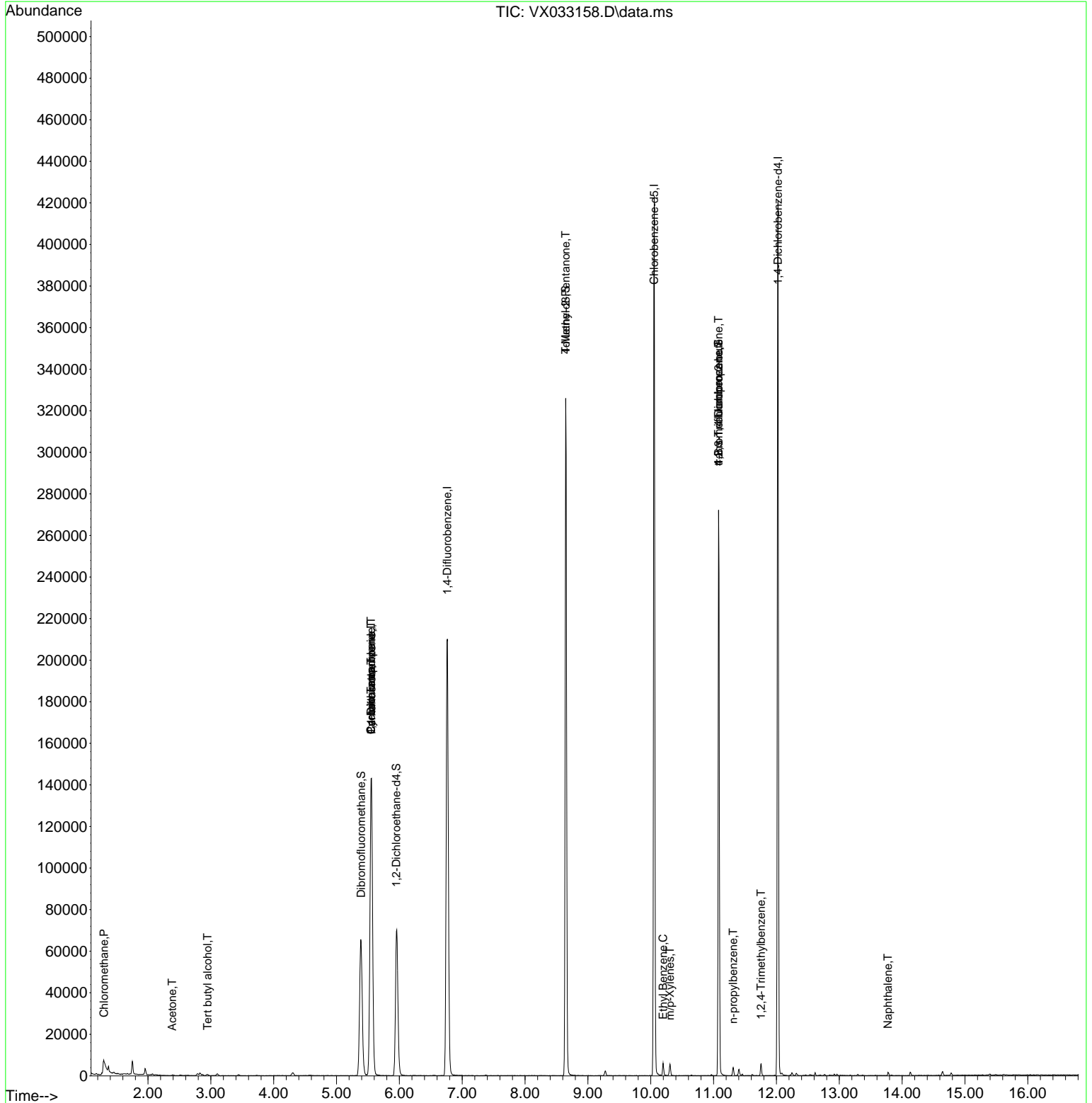
| Compound                      | R.T.   | QIon           | Response | Conc      | Units    | Dev(Min) |
|-------------------------------|--------|----------------|----------|-----------|----------|----------|
| -----                         |        |                |          |           |          |          |
| Internal Standards            |        |                |          |           |          |          |
| 1) Pentafluorobenzene         | 5.556  | 168            | 139185   | 50.000    | ug/l     | 0.00     |
| 34) 1,4-Difluorobenzene       | 6.763  | 114            | 220899   | 50.000    | ug/l     | 0.00     |
| 63) Chlorobenzene-d5          | 10.055 | 117            | 191114   | 50.000    | ug/l     | 0.00     |
| 72) 1,4-Dichlorobenzene-d4    | 12.024 | 152            | 88108    | 50.000    | ug/l     | 0.00     |
| System Monitoring Compounds   |        |                |          |           |          |          |
| 33) 1,2-Dichloroethane-d4     | 5.952  | 65             | 72987    | 53.910    | ug/l     | 0.00     |
| Spiked Amount                 | 50.000 | Range 78 - 117 | Recovery | =         | 107.820% |          |
| 35) Dibromofluoromethane      | 5.391  | 113            | 57815    | 46.425    | ug/l     | 0.00     |
| Spiked Amount                 | 50.000 | Range 75 - 124 | Recovery | =         | 92.840%  |          |
| 50) Toluene-d8                | 8.647  | 98             | 192190   | 51.350    | ug/l     | 0.00     |
| Spiked Amount                 | 50.000 | Range 92 - 112 | Recovery | =         | 102.700% |          |
| 62) 4-Bromofluorobenzene      | 11.079 | 95             | 70274    | 42.958    | ug/l     | 0.00     |
| Spiked Amount                 | 50.000 | Range 83 - 123 | Recovery | =         | 85.920%  |          |
| Target Compounds              |        |                |          |           |          |          |
|                               |        |                |          |           |          | Qvalue   |
| 3) Chloromethane              | 1.301  | 50             | 435      | 0.379     | ug/l #   | 43       |
| 11) Tert butyl alcohol        | 2.947  | 59             | 397      | 1.848     | ug/l #   | 72       |
| 16) Acetone                   | 2.386  | 43             | 447      | 0.706     | ug/l #   | 45       |
| 20) Methylene Chloride        | 2.800  | 84             | 272      | Below Cal | #        | 33       |
| 31) Cyclohexane               | 5.550  | 56             | 3070     | 1.398     | ug/l #   | 4        |
| 36) 1,1-Dichloropropene       | 5.550  | 75             | 10559    | 5.303     | ug/l #   | 50       |
| 38) Carbon Tetrachloride      | 5.550  | 117            | 14396    | 6.517     | ug/l #   | 16       |
| 51) 4-Methyl-2-Pentanone      | 8.647  | 43             | 846      | 0.477     | ug/l #   | 1        |
| 67) Ethyl Benzene             | 10.195 | 91             | 3536     | 0.523     | ug/l     | 96       |
| 68) m/p-Xylenes               | 10.305 | 106            | 1346     | 0.509     | ug/l     | 96       |
| 76) 1,2,3-Trichloropropane    | 11.079 | 75             | 37895    | 22.710    | ug/l #   | 37       |
| 78) n-propylbenzene           | 11.311 | 91             | 1555     | 0.216     | ug/l     | 98       |
| 81) trans-1,4-Dichloro-2-b... | 11.079 | 75             | 37895    | 73.819    | ug/l #   | 6        |
| 84) 1,2,4-Trimethylbenzene    | 11.756 | 105            | 2872     | 0.545     | ug/l     | 97       |
| 95) Naphthalene               | 13.774 | 128            | 1531     | 0.272     | ug/l #   | 92       |
| -----                         |        |                |          |           |          |          |

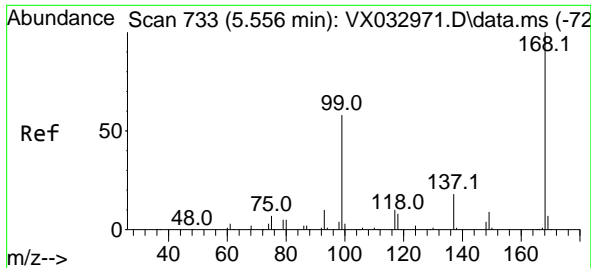
(#) = qualifier out of range (m) = manual integration (+) = signals summed

Data Path : Z:\voasrv\HPCHEM1\MSVOA\_X\Data\VX120122\  
 Data File : VX033158.D  
 Acq On : 01 Dec 2022 13:13  
 Operator : JC/MD  
 Sample : N5815-28  
 Misc : 5.0mL/MSVOA\_X/WATER  
 ALS Vial : 13 Sample Multiplier: 1

Instrument :  
 MSVOA\_X  
 ClientSampleId :  
 TB-2022-11-29

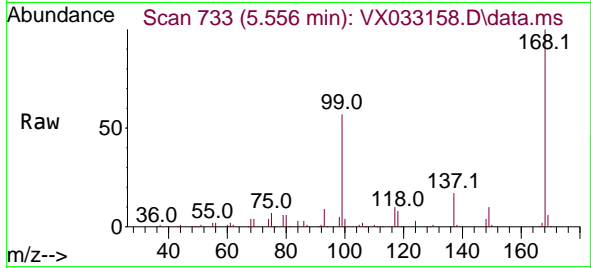
Quant Time: Dec 02 00:50:42 2022  
 Quant Method : Z:\voasrv\HPCHEM1\MSVOA\_X\Method\82X112222W.M  
 Quant Title : SW846 8260  
 QLast Update : Tue Nov 22 13:58:46 2022  
 Response via : Initial Calibration



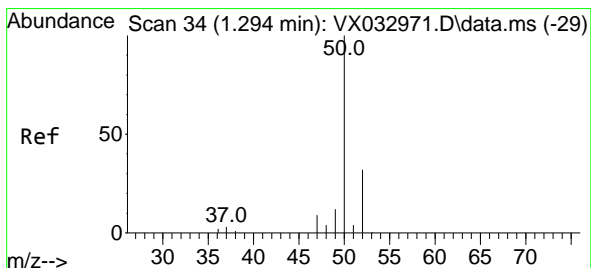
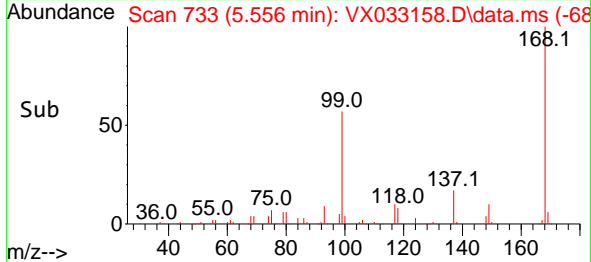
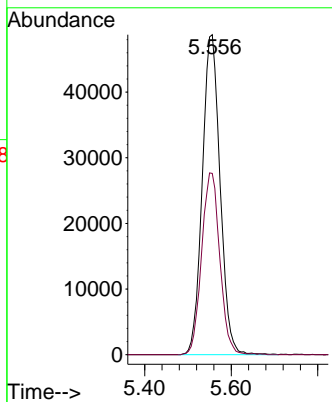


#1  
 Pentafluorobenzene  
 Concen: 50.000 ug/l  
 RT: 5.556 min Scan# 71  
 Delta R.T. 0.000 min  
 Lab File: VX033158.D  
 Acq: 01 Dec 2022 13:13

Instrument : MSVOA\_X  
 ClientSampleId : TB-2022-11-29

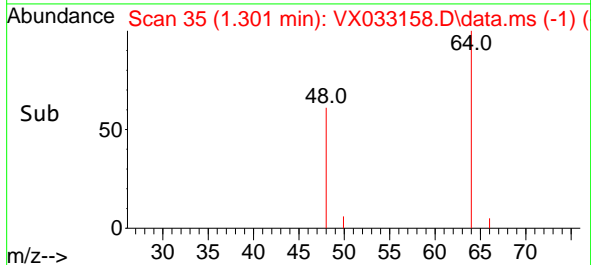
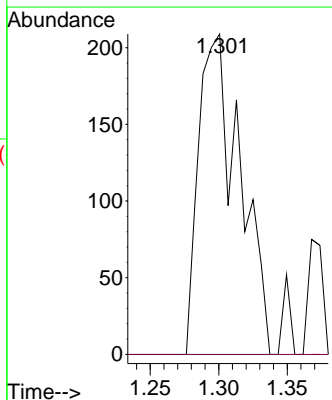
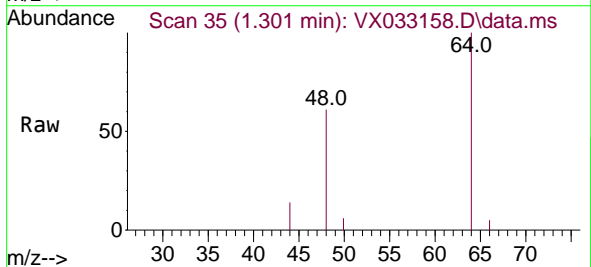


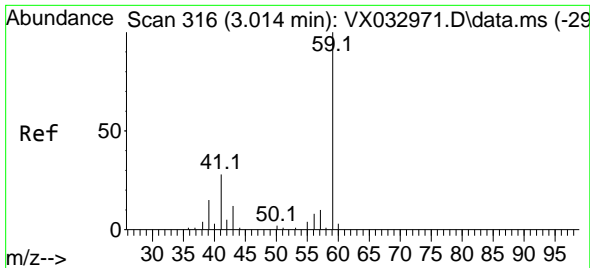
Tgt Ion:168 Resp: 139185  
 Ion Ratio Lower Upper  
 168 100  
 99 56.7 46.1 69.1



#3  
 Chloromethane  
 Concen: 0.379 ug/l  
 RT: 1.301 min Scan# 35  
 Delta R.T. 0.007 min  
 Lab File: VX033158.D  
 Acq: 01 Dec 2022 13:13

Tgt Ion: 50 Resp: 435  
 Ion Ratio Lower Upper  
 50 100  
 52 0.0 25.4 38.2#

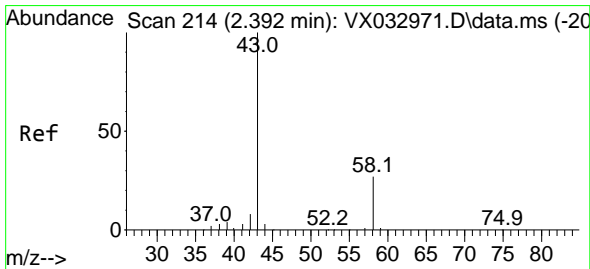
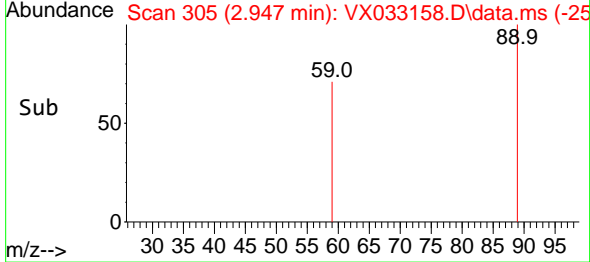
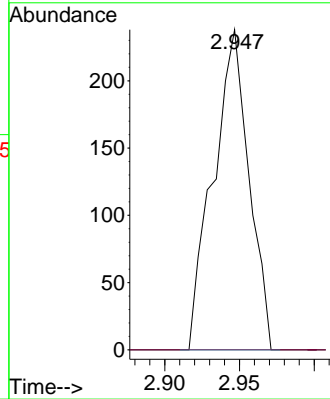
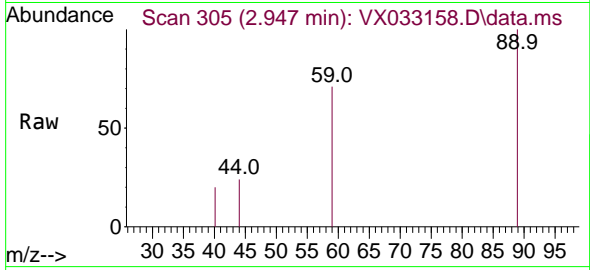




#11  
 Tert butyl alcohol  
 Concen: 1.848 ug/l  
 RT: 2.947 min Scan# 30  
 Delta R.T. -0.018 min  
 Lab File: VX033158.D  
 Acq: 01 Dec 2022 13:13

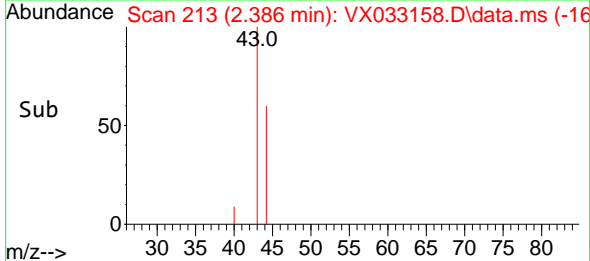
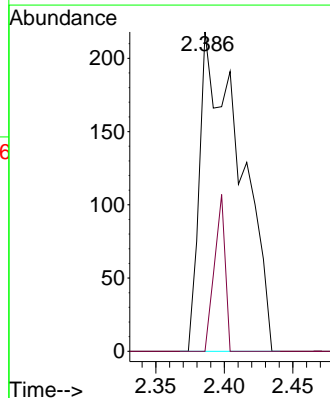
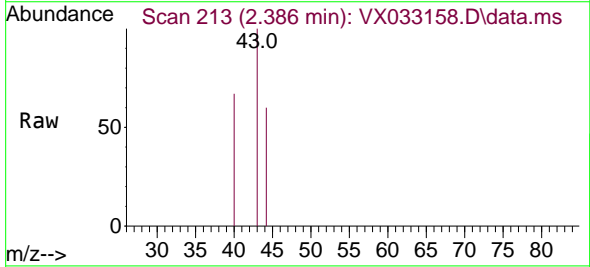
Instrument : MSVOA\_X  
 ClientSampleId : TB-2022-11-29

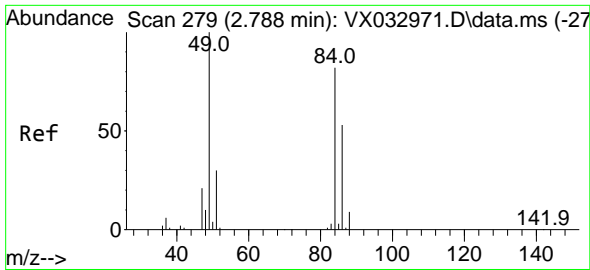
Tgt Ion: 59 Resp: 397  
 Ion Ratio Lower Upper  
 59 100  
 57 0.0 8.2 12.4#



#16  
 Acetone  
 Concen: 0.706 ug/l  
 RT: 2.386 min Scan# 213  
 Delta R.T. 0.006 min  
 Lab File: VX033158.D  
 Acq: 01 Dec 2022 13:13

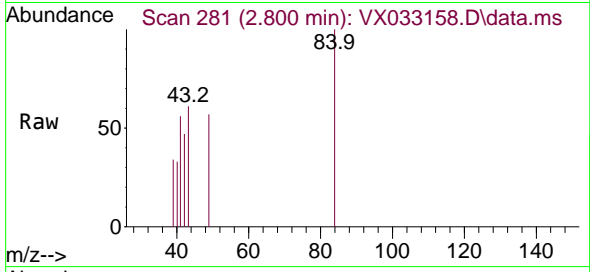
Tgt Ion: 43 Resp: 447  
 Ion Ratio Lower Upper  
 43 100  
 58 0.0 23.8 35.8#





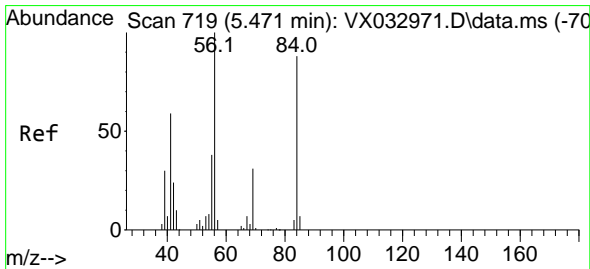
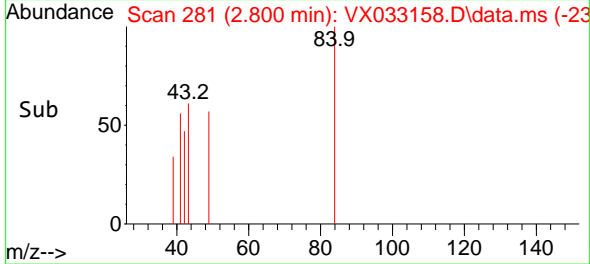
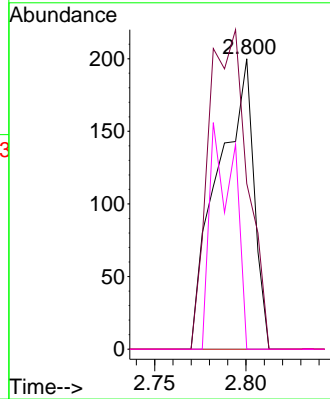
#20  
 Methylene Chloride  
 Concen: Below Cal  
 RT: 2.800 min Scan# 21  
 Delta R.T. 0.012 min  
 Lab File: VX033158.D  
 Acq: 01 Dec 2022 13:13

Instrument : MSVOA\_X  
 ClientSampleId : TB-2022-11-29



Tgt Ion: 84 Resp: 272

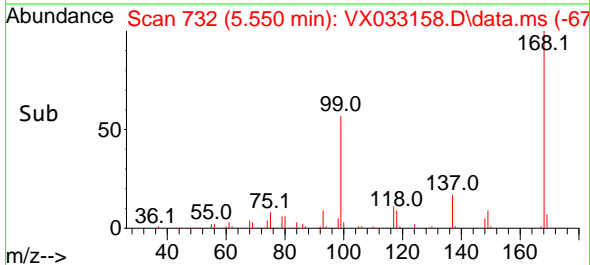
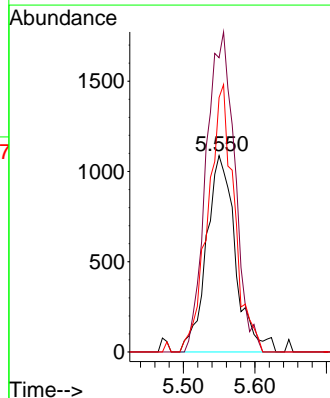
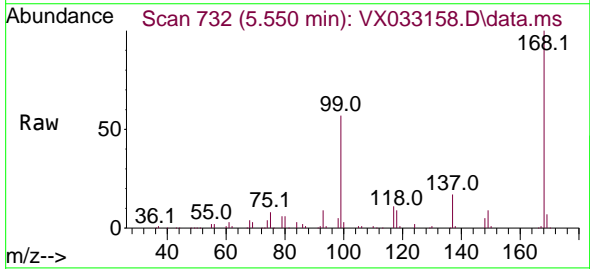
| Ion | Ratio | Lower | Upper  |
|-----|-------|-------|--------|
| 84  | 100   |       |        |
| 49  | 57.0  | 101.0 | 151.6# |
| 51  | 0.0   | 31.1  | 46.7#  |
| 86  | 0.0   | 52.3  | 78.5#  |

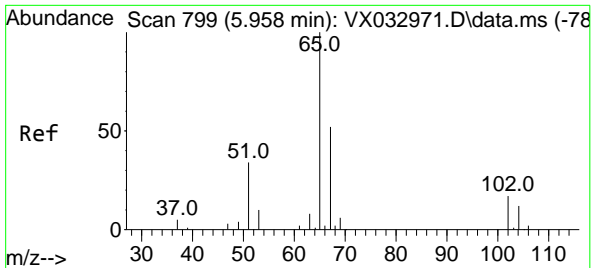


#31  
 Cyclohexane  
 Concen: 1.398 ug/l  
 RT: 5.550 min Scan# 732  
 Delta R.T. 0.080 min  
 Lab File: VX033158.D  
 Acq: 01 Dec 2022 13:13

Tgt Ion: 56 Resp: 3070

| Ion | Ratio | Lower | Upper  |
|-----|-------|-------|--------|
| 56  | 100   |       |        |
| 69  | 149.8 | 24.1  | 36.1#  |
| 84  | 129.6 | 66.9  | 100.3# |





#33  
 1,2-Dichloroethane-d4  
 Concen: 53.910 ug/l  
 RT: 5.952 min Scan# 799  
 Delta R.T. -0.006 min  
 Lab File: VX033158.D  
 Acq: 01 Dec 2022 13:13

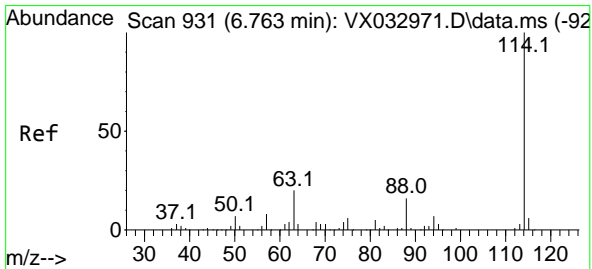
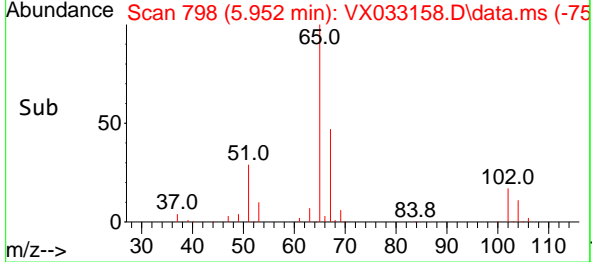
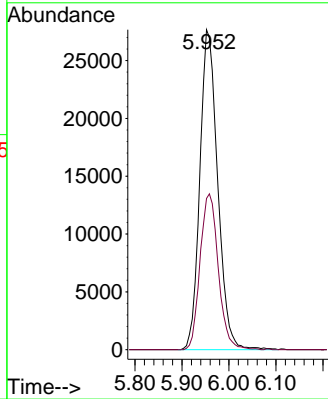
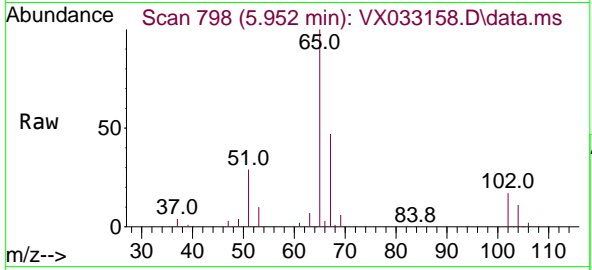
Instrument :

MSVOA\_X

ClientSampleId :

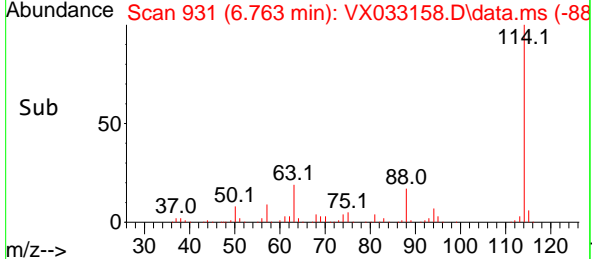
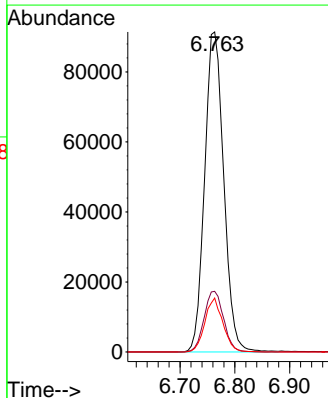
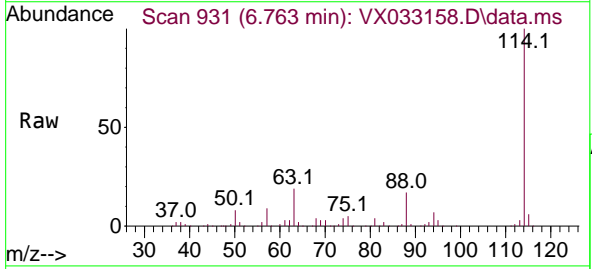
TB-2022-11-29

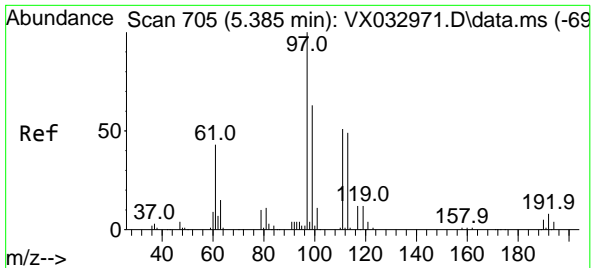
Tgt Ion: 65 Resp: 72987  
 Ion Ratio Lower Upper  
 65 100  
 67 49.6 0.0 101.8



#34  
 1,4-Difluorobenzene  
 Concen: 50.000 ug/l  
 RT: 6.763 min Scan# 931  
 Delta R.T. 0.000 min  
 Lab File: VX033158.D  
 Acq: 01 Dec 2022 13:13

Tgt Ion: 114 Resp: 220899  
 Ion Ratio Lower Upper  
 114 100  
 63 18.9 0.0 41.6  
 88 16.8 0.0 33.4

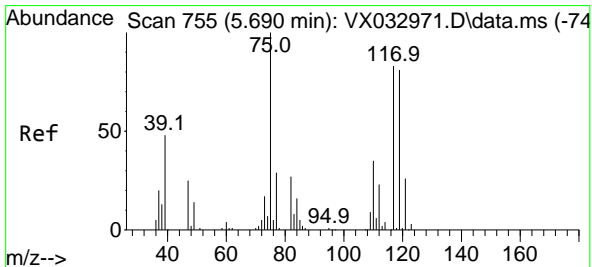
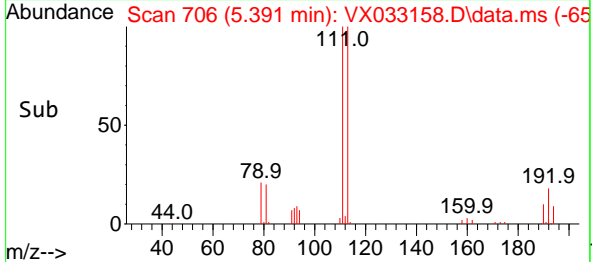
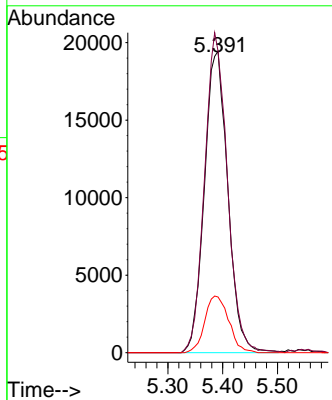
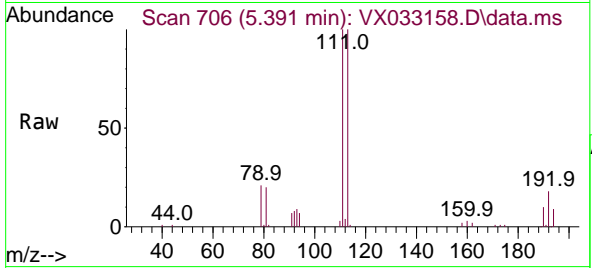




#35  
 Dibromofluoromethane  
 Concen: 46.425 ug/l  
 RT: 5.391 min Scan# 706  
 Delta R.T. 0.006 min  
 Lab File: VX033158.D  
 Acq: 01 Dec 2022 13:13

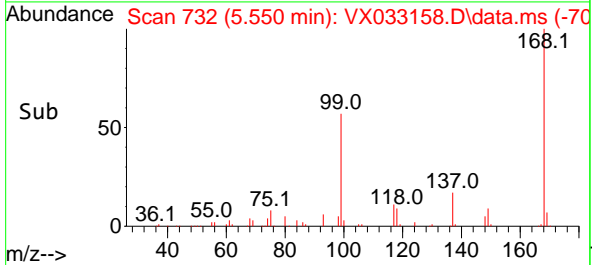
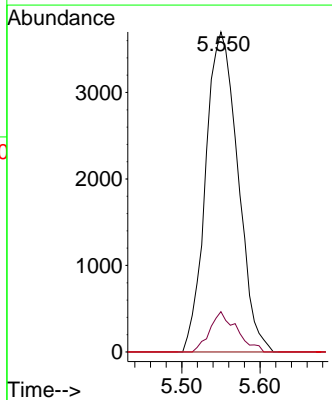
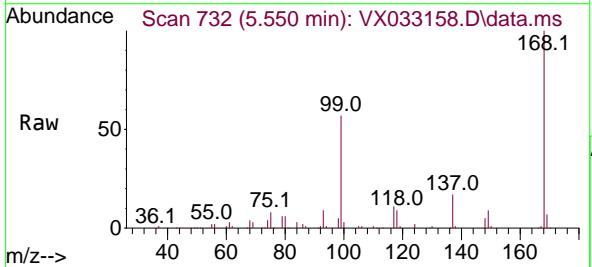
Instrument : MSVOA\_X  
 Client Sample Id : TB-2022-11-29

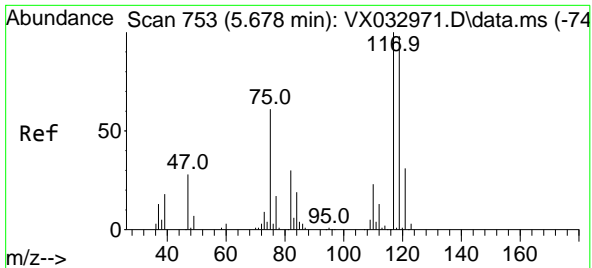
| Tgt Ion | Resp  | Lower | Upper |
|---------|-------|-------|-------|
| 113     | 57815 |       |       |
| 113     | 100   |       |       |
| 111     | 103.2 | 82.4  | 123.6 |
| 192     | 19.2  | 15.4  | 23.2  |



#36  
 1,1-Dichloropropene  
 Concen: 5.303 ug/l  
 RT: 5.550 min Scan# 732  
 Delta R.T. -0.146 min  
 Lab File: VX033158.D  
 Acq: 01 Dec 2022 13:13

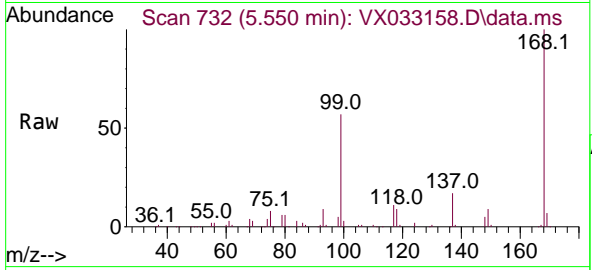
| Tgt Ion | Resp  | Lower | Upper |
|---------|-------|-------|-------|
| 75      | 10559 |       |       |
| 75      | 100   |       |       |
| 110     | 10.6  | 18.4  | 55.2# |
| 77      | 0.0   | 24.5  | 36.7# |



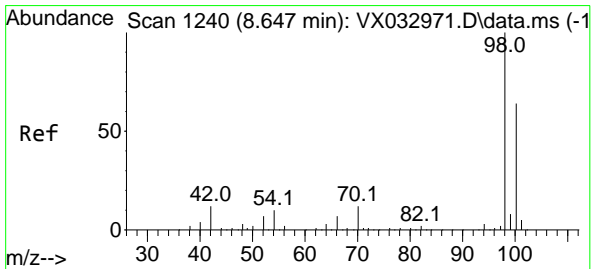
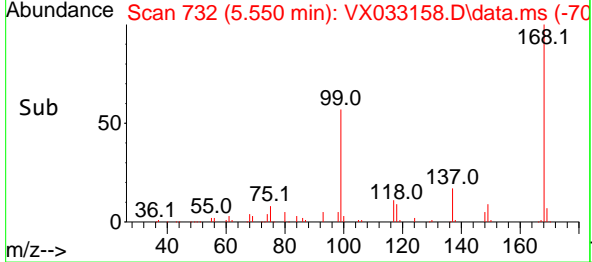
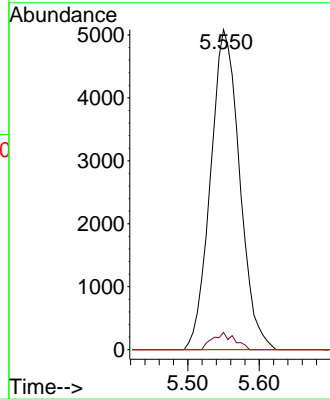


#38  
 Carbon Tetrachloride  
 Concen: 6.517 ug/l  
 RT: 5.550 min Scan# 711  
 Delta R.T. -0.134 min  
 Lab File: VX033158.D  
 Acq: 01 Dec 2022 13:13

Instrument :  
 MSVOA\_X  
 ClientSampleId :  
 TB-2022-11-29

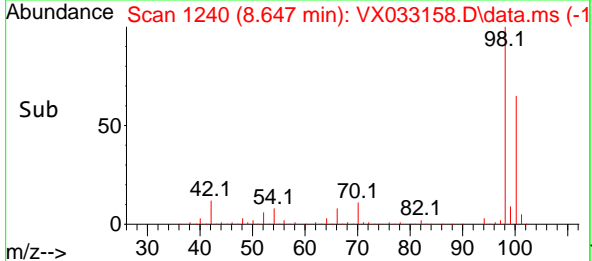
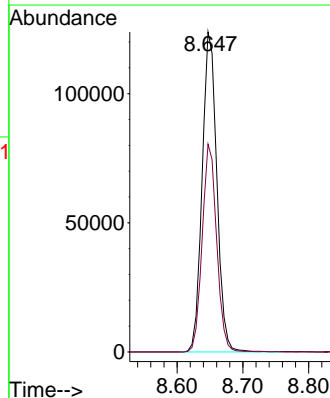
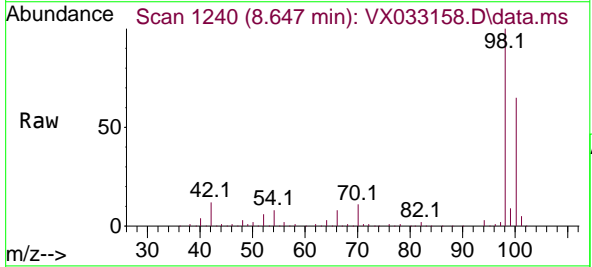


Tgt Ion:117 Resp: 14396  
 Ion Ratio Lower Upper  
 117 100  
 119 5.4 77.2 115.8#  
 121 0.0 25.8 38.6#

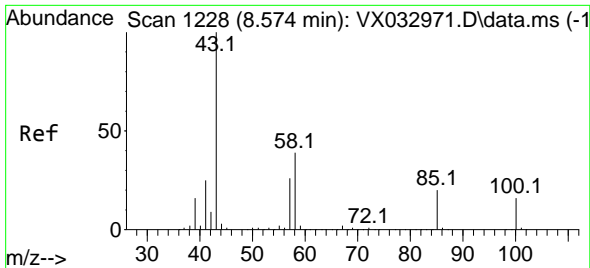


#50  
 Toluene-d8  
 Concen: 51.350 ug/l  
 RT: 8.647 min Scan# 1240  
 Delta R.T. -0.006 min  
 Lab File: VX033158.D  
 Acq: 01 Dec 2022 13:13

Tgt Ion: 98 Resp: 192190  
 Ion Ratio Lower Upper  
 98 100  
 100 64.1 50.9 76.3



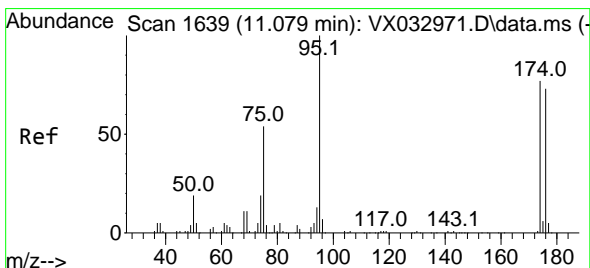
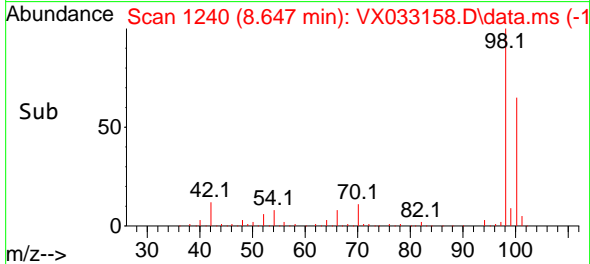
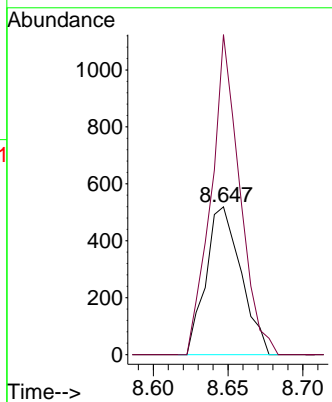
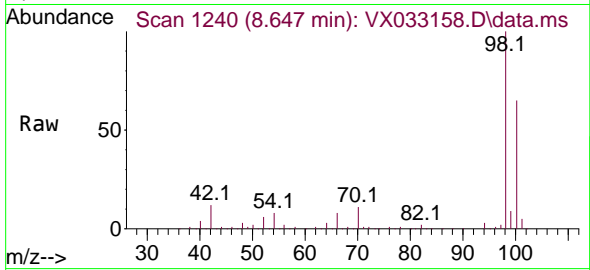




#51  
 4-Methyl-2-Pentanone  
 Concen: 0.477 ug/l  
 RT: 8.647 min Scan# 11  
 Delta R.T. 0.073 min  
 Lab File: VX033158.D  
 Acq: 01 Dec 2022 13:13

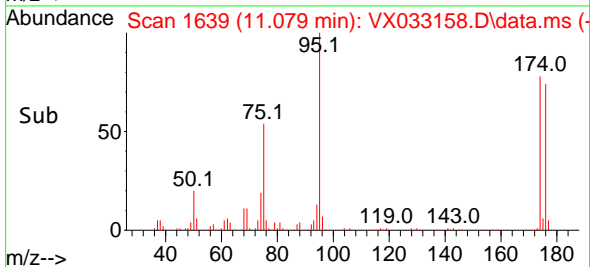
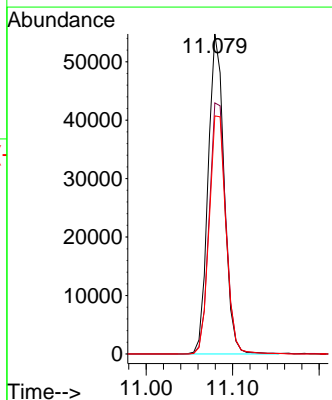
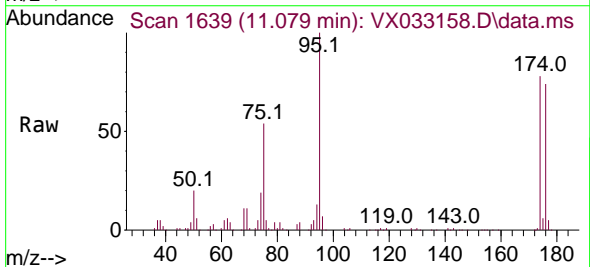
Instrument : MSVOA\_X  
 ClientSampleId : TB-2022-11-29

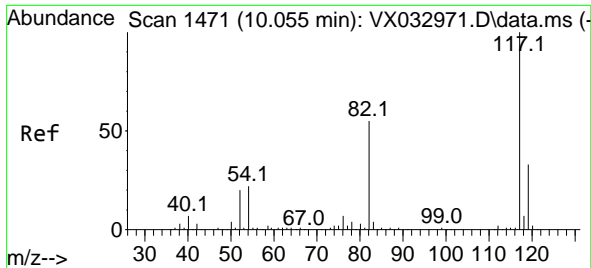
Tgt Ion: 43 Resp: 846  
 Ion Ratio Lower Upper  
 43 100  
 58 177.2 30.9 46.3#



#62  
 4-Bromofluorobenzene  
 Concen: 42.958 ug/l  
 RT: 11.079 min Scan# 1639  
 Delta R.T. 0.000 min  
 Lab File: VX033158.D  
 Acq: 01 Dec 2022 13:13

Tgt Ion: 95 Resp: 70274  
 Ion Ratio Lower Upper  
 95 100  
 174 81.8 0.0 164.0  
 176 78.0 0.0 154.4

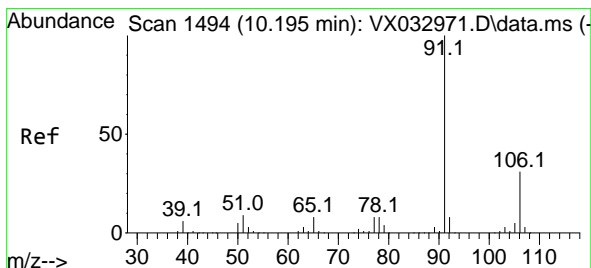
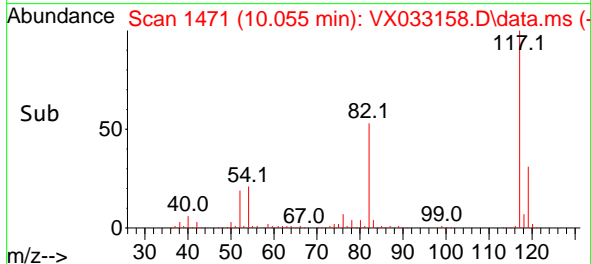
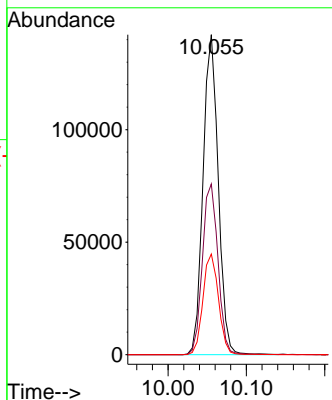
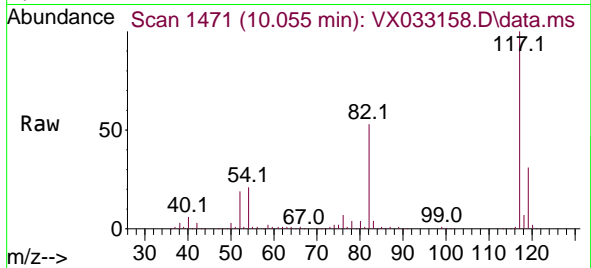




#63  
 Chlorobenzene-d5  
 Concen: 50.000 ug/l  
 RT: 10.055 min Scan# 14  
 Delta R.T. 0.000 min  
 Lab File: VX033158.D  
 Acq: 01 Dec 2022 13:13

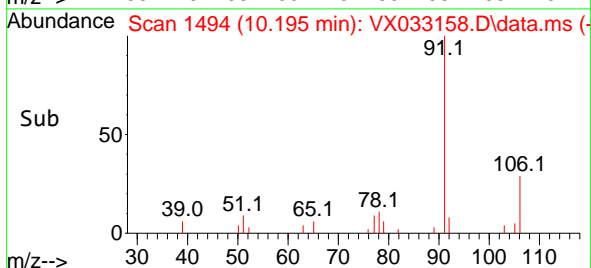
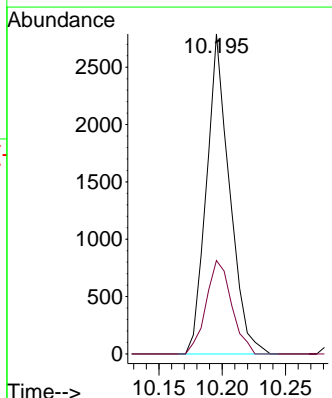
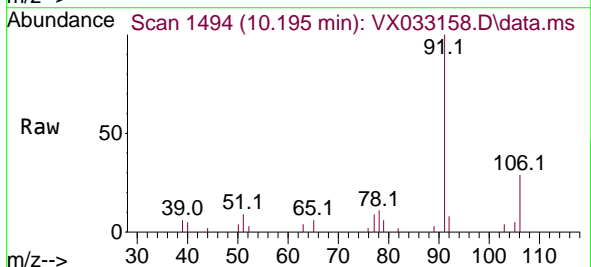
Instrument :  
 MSVOA\_X  
 ClientSampleId :  
 TB-2022-11-29

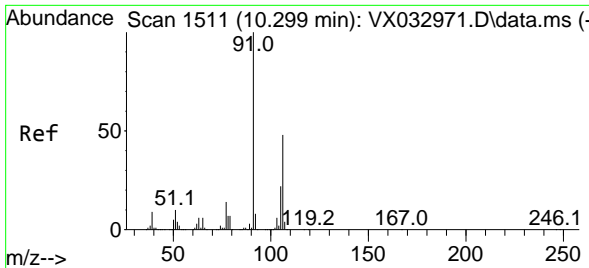
| Tgt Ion | Resp   | Lower | Upper |
|---------|--------|-------|-------|
| 117     | 191114 | 100   | 100   |
| 82      | 53.4   | 44.3  | 66.5  |
| 119     | 31.5   | 25.7  | 38.5  |



#67  
 Ethyl Benzene  
 Concen: 0.523 ug/l  
 RT: 10.195 min Scan# 1494  
 Delta R.T. 0.000 min  
 Lab File: VX033158.D  
 Acq: 01 Dec 2022 13:13

| Tgt Ion | Resp | Lower | Upper |
|---------|------|-------|-------|
| 91      | 3536 | 100   | 100   |
| 106     | 29.2 | 25.0  | 37.6  |

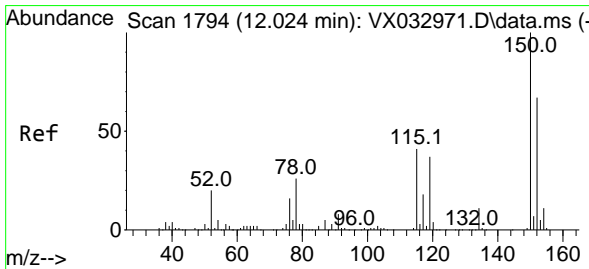
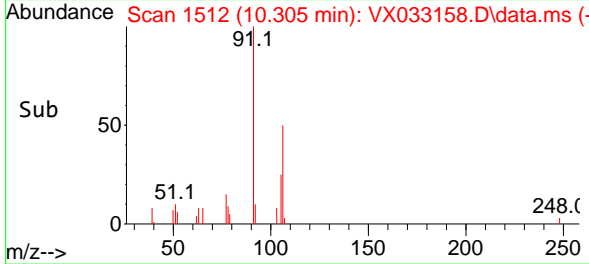
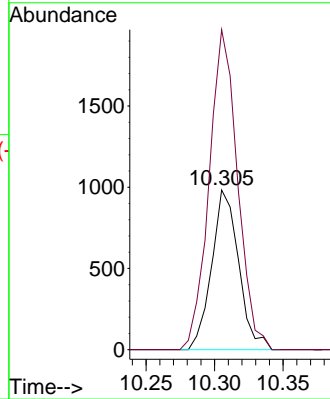
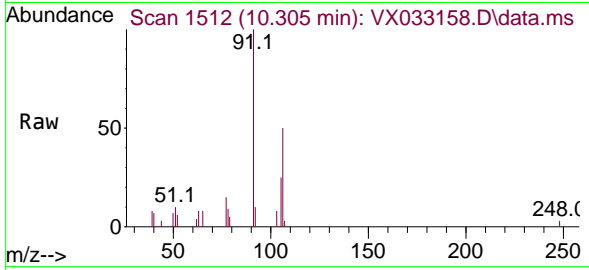




#68  
 m/p-Xylenes  
 Concen: 0.509 ug/l  
 RT: 10.305 min Scan# 1511  
 Delta R.T. 0.000 min  
 Lab File: VX033158.D  
 Acq: 01 Dec 2022 13:13

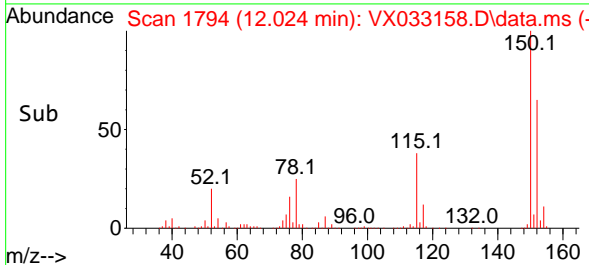
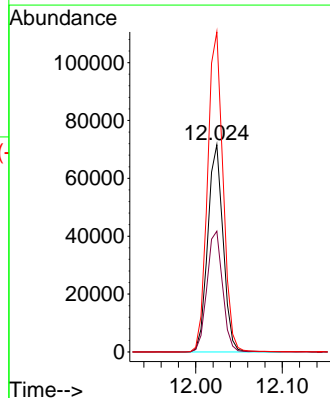
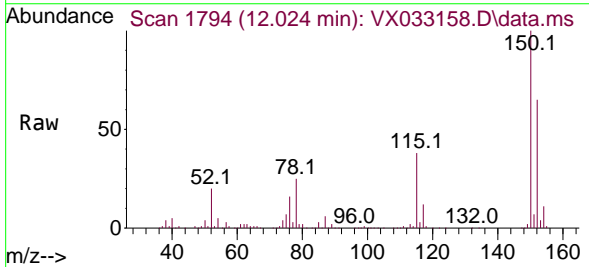
Instrument : MSVOA\_X  
 ClientSampleId : TB-2022-11-29

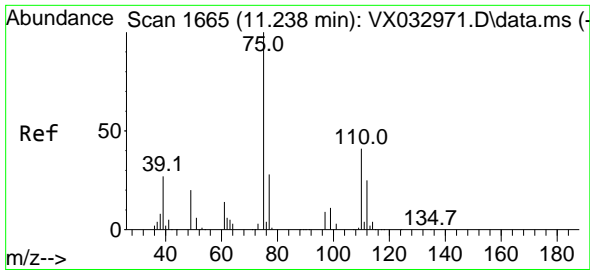
Tgt Ion:106 Resp: 1346  
 Ion Ratio Lower Upper  
 106 100  
 91 211.0 164.5 246.7



#72  
 1,4-Dichlorobenzene-d4  
 Concen: 50.000 ug/l  
 RT: 12.024 min Scan# 1794  
 Delta R.T. 0.000 min  
 Lab File: VX033158.D  
 Acq: 01 Dec 2022 13:13

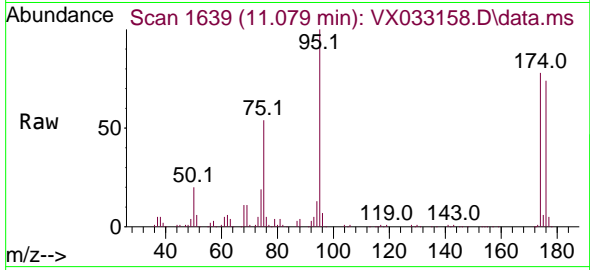
Tgt Ion:152 Resp: 88108  
 Ion Ratio Lower Upper  
 152 100  
 115 59.6 44.0 132.0  
 150 156.4 0.0 351.8



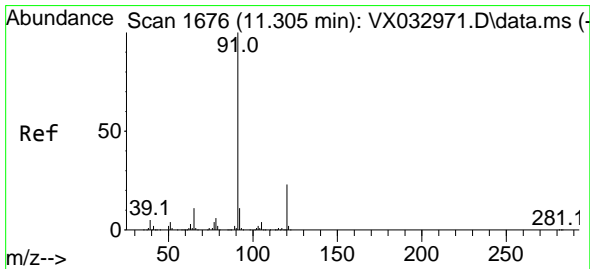
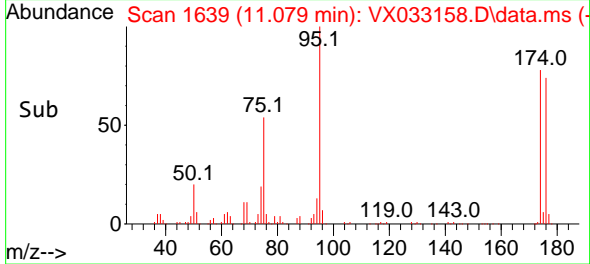
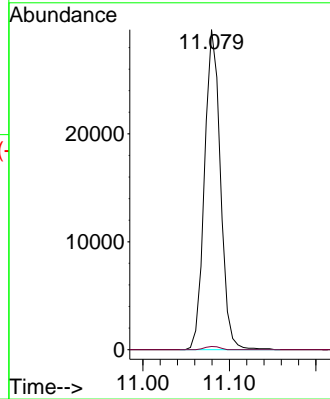


#76  
 1,2,3-Trichloropropane  
 Concen: 22.710 ug/l  
 RT: 11.079 min Scan# 1665  
 Delta R.T. -0.165 min  
 Lab File: VX033158.D  
 Acq: 01 Dec 2022 13:13

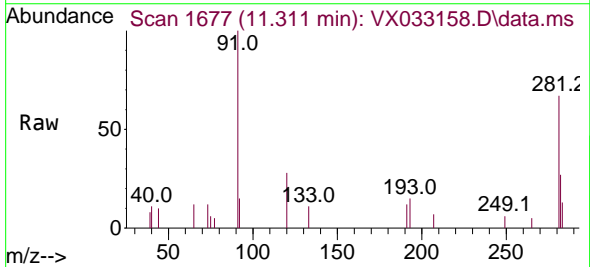
Instrument : MSVOA\_X  
 ClientSampleId : TB-2022-11-29



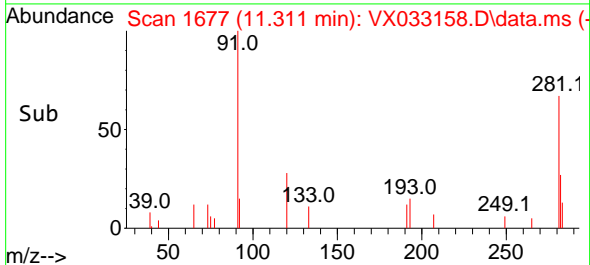
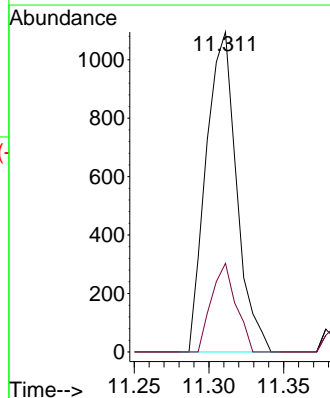
Tgt Ion: 75 Resp: 37895  
 Ion Ratio Lower Upper  
 75 100  
 77 0.9 20.0 60.0#

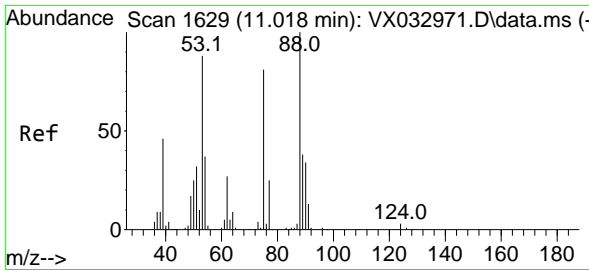


#78  
 n-propylbenzene  
 Concen: 0.216 ug/l  
 RT: 11.311 min Scan# 1677  
 Delta R.T. 0.006 min  
 Lab File: VX033158.D  
 Acq: 01 Dec 2022 13:13



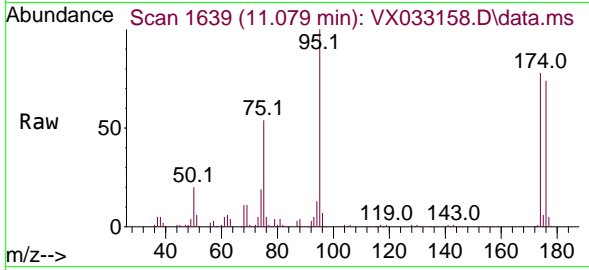
Tgt Ion: 91 Resp: 1555  
 Ion Ratio Lower Upper  
 91 100  
 120 22.3 11.6 34.8



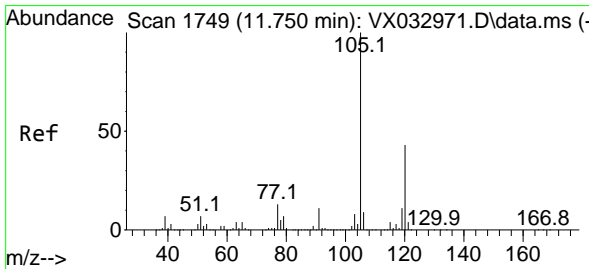
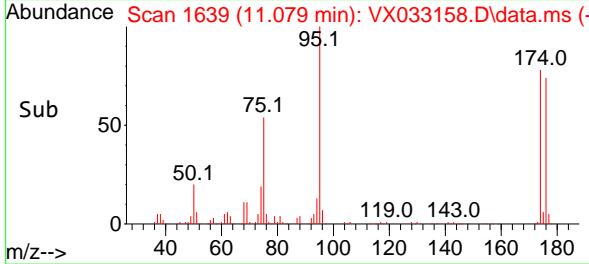
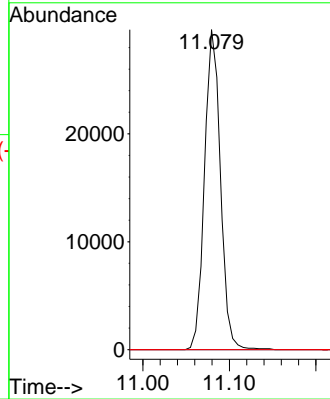


#81  
 trans-1,4-Dichloro-2-butene  
 Concen: 73.819 ug/l  
 RT: 11.079 min Scan# 1  
 Delta R.T. 0.061 min  
 Lab File: VX033158.D  
 Acq: 01 Dec 2022 13:13

Instrument :  
 MSVOA\_X  
 ClientSampleId :  
 TB-2022-11-29

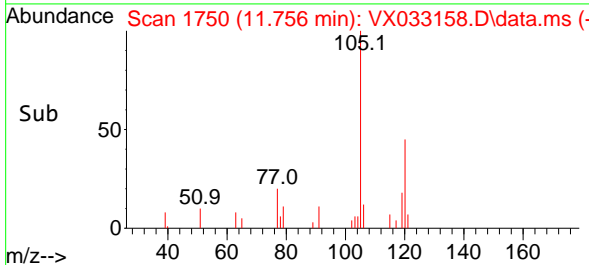
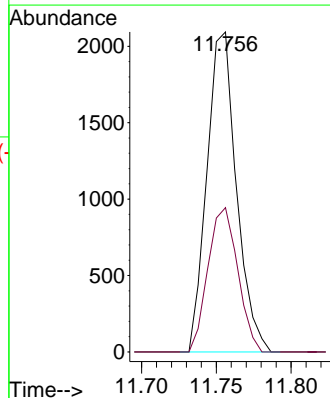
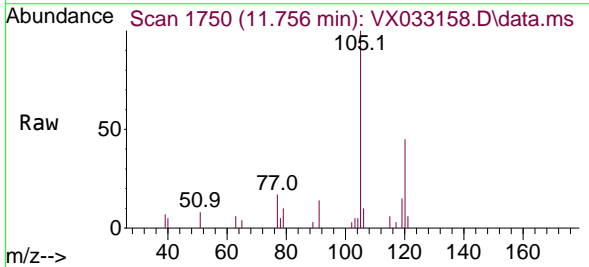


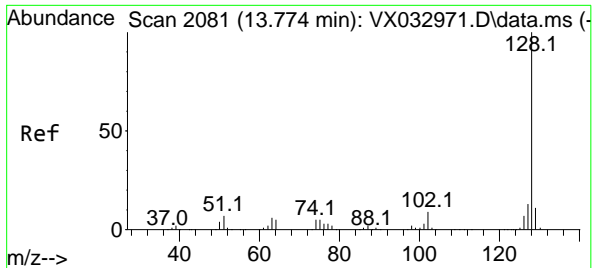
Tgt Ion: 75 Resp: 37895  
 Ion Ratio Lower Upper  
 75 100  
 53 0.0 86.9 130.3#  
 89 0.0 38.3 57.5#



#84  
 1,2,4-Trimethylbenzene  
 Concen: 0.545 ug/l  
 RT: 11.756 min Scan# 1750  
 Delta R.T. 0.006 min  
 Lab File: VX033158.D  
 Acq: 01 Dec 2022 13:13

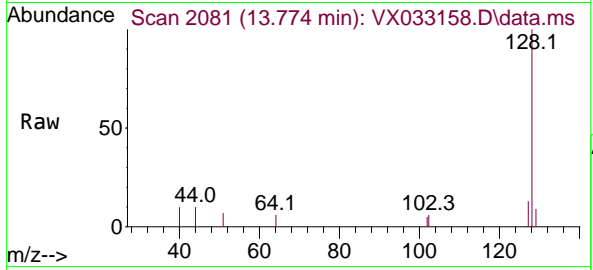
Tgt Ion: 105 Resp: 2872  
 Ion Ratio Lower Upper  
 105 100  
 120 45.5 21.9 65.5





#95  
 Naphthalene  
 Concen: 0.272 ug/l  
 RT: 13.774 min Scan# 20  
 Delta R.T. -0.006 min  
 Lab File: VX033158.D  
 Acq: 01 Dec 2022 13:13

Instrument : MSVOA\_X  
 ClientSampleId : TB-2022-11-29



Tgt Ion:128 Resp: 1531

| Ion | Ratio | Lower | Upper |
|-----|-------|-------|-------|
| 128 | 100   |       |       |
| 127 | 9.9   | 10.2  | 15.4# |
| 129 | 7.8   | 8.9   | 13.3# |

