

Data Path : Z:\voasrv\HPCHEM1\MSVOA_X\Data\VX120222\
 Data File : VX033207.D
 Acq On : 02 Dec 2022 23:29
 Operator : JC/MD
 Sample : PB149377ZHE#01
 Misc : 5.0mL/MSVOA_X/WATER
 ALS Vial : 34 Sample Multiplier: 1

Instrument :
 MSVOA_X
 ClientSampleId :
 PB149377ZHE#01

Quant Time: Dec 05 01:11:14 2022
 Quant Method : Z:\voasrv\HPCHEM1\MSVOA_X\Method\82X112222W.M
 Quant Title : SW846 8260
 QLast Update : Tue Nov 22 13:58:46 2022
 Response via : Initial Calibration

Compound	R.T.	QIon	Response	Conc	Units	Dev(Min)

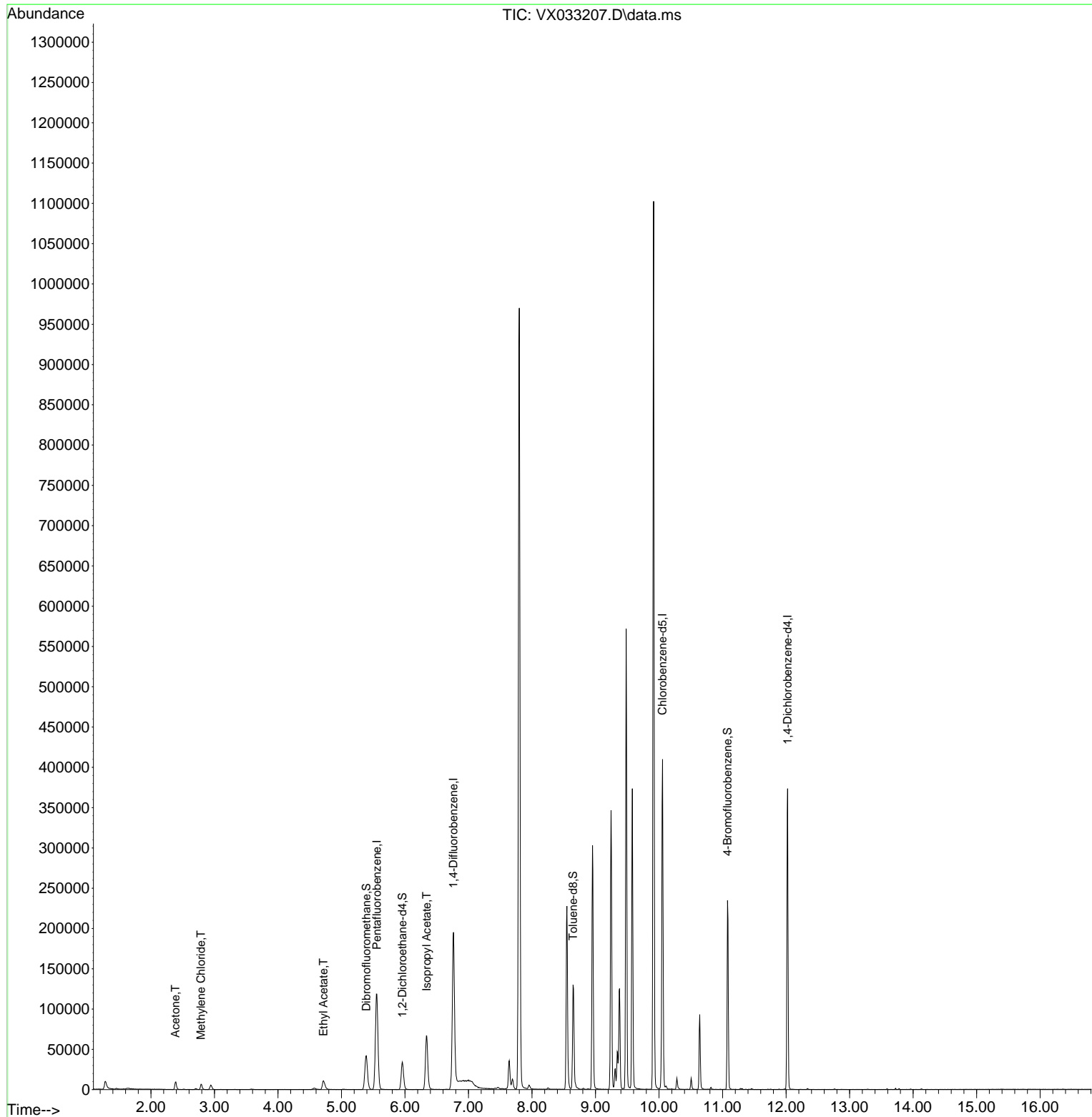
Internal Standards						
1) Pentafluorobenzene	5.556	168	113133	50.000	ug/l	0.00
34) 1,4-Difluorobenzene	6.763	114	188859	50.000	ug/l	0.00
63) Chlorobenzene-d5	10.055	117	177298	50.000	ug/l	0.00
72) 1,4-Dichlorobenzene-d4	12.024	152	75823	50.000	ug/l	0.00
System Monitoring Compounds						
33) 1,2-Dichloroethane-d4	5.958	65	35106	30.537	ug/l	0.00
Spiked Amount	50.000	Range 78 - 117	Recovery =	61.080%#		
35) Dibromofluoromethane	5.391	113	37141	34.883	ug/l	0.00
Spiked Amount	50.000	Range 75 - 124	Recovery =	69.760%#		
50) Toluene-d8	8.647	98	79792	23.776	ug/l	0.00
Spiked Amount	50.000	Range 92 - 112	Recovery =	47.560%#		
62) 4-Bromofluorobenzene	11.079	95	61208	43.763	ug/l	0.00
Spiked Amount	50.000	Range 83 - 123	Recovery =	87.520%		
Target Compounds						
						Qvalue
16) Acetone	2.386	43	12029	23.378	ug/l	99
20) Methylene Chloride	2.788	84	3370	1.899	ug/l	84
37) Ethyl Acetate	4.714	43	20209	13.606	ug/l	98
43) Isopropyl Acetate	6.342	43	92118	37.502	ug/l	99

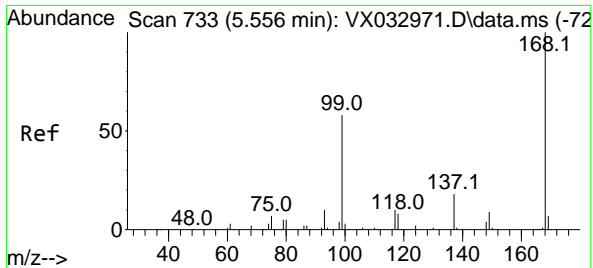
(#) = qualifier out of range (m) = manual integration (+) = signals summed

Data Path : Z:\voasrv\HPCHEM1\MSVOA_X\Data\VX120222\
 Data File : VX033207.D
 Acq On : 02 Dec 2022 23:29
 Operator : JC/MD
 Sample : PB149377ZHE#01
 Misc : 5.0mL/MSVOA_X/WATER
 ALS Vial : 34 Sample Multiplier: 1

Instrument :
 MSVOA_X
 ClientSampleId :
 PB149377ZHE#01

Quant Time: Dec 05 01:11:14 2022
 Quant Method : Z:\voasrv\HPCHEM1\MSVOA_X\Method\82X112222W.M
 Quant Title : SW846 8260
 QLast Update : Tue Nov 22 13:58:46 2022
 Response via : Initial Calibration

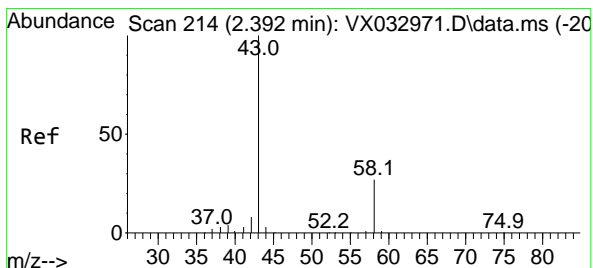
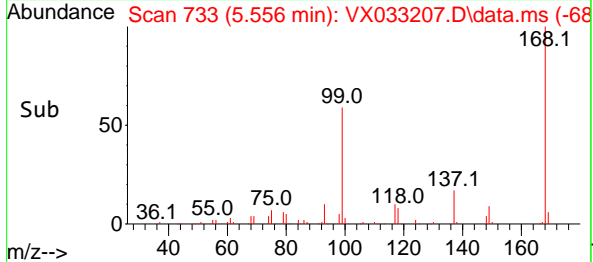
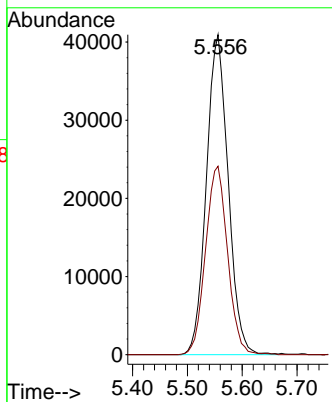
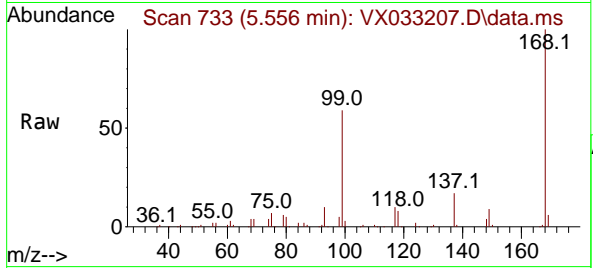




#1
 Pentafluorobenzene
 Concen: 50.000 ug/l
 RT: 5.556 min Scan# 71
 Delta R.T. -0.000 min
 Lab File: VX033207.D
 Acq: 02 Dec 2022 23:29

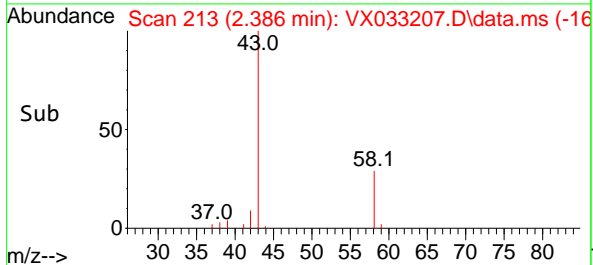
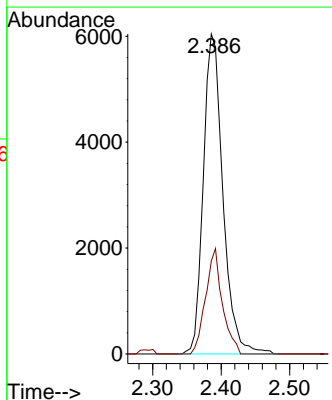
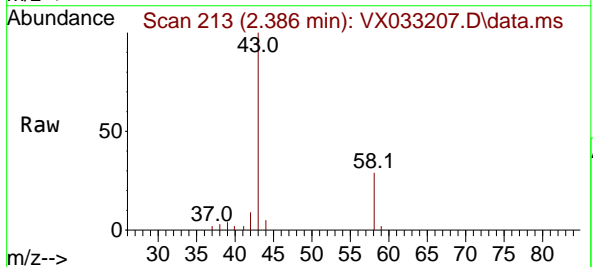
Instrument : MSVOA_X
 ClientSampleId : PB149377ZHE#01

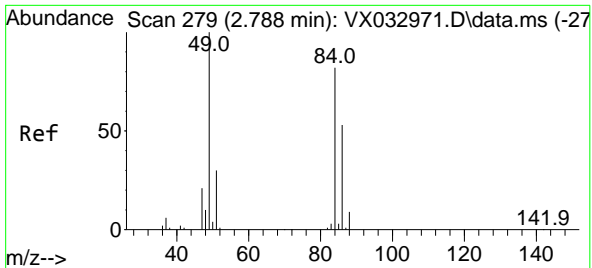
Tgt Ion:168 Resp: 113133
 Ion Ratio Lower Upper
 168 100
 99 58.9 46.1 69.1



#16
 Acetone
 Concen: 23.378 ug/l
 RT: 2.386 min Scan# 213
 Delta R.T. 0.006 min
 Lab File: VX033207.D
 Acq: 02 Dec 2022 23:29

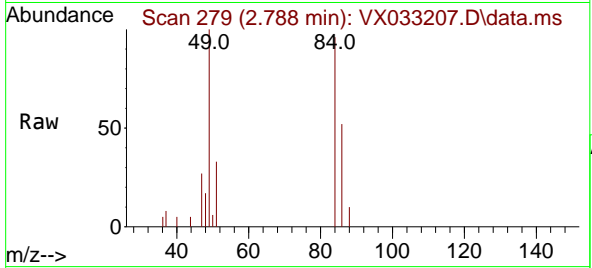
Tgt Ion: 43 Resp: 12029
 Ion Ratio Lower Upper
 43 100
 58 29.1 23.8 35.8





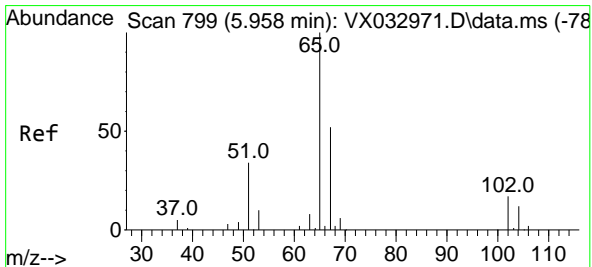
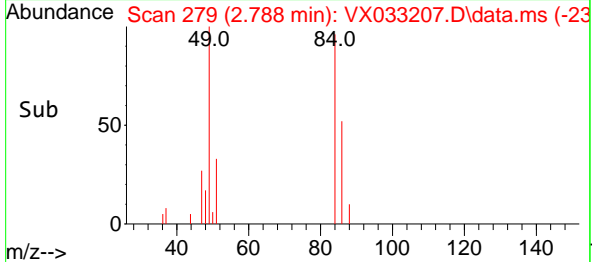
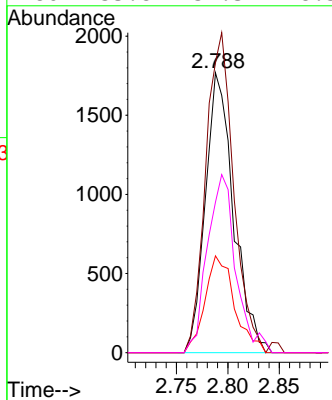
#20
 Methylene Chloride
 Concen: 1.899 ug/l
 RT: 2.788 min Scan# 21
 Delta R.T. -0.000 min
 Lab File: VX033207.D
 Acq: 02 Dec 2022 23:29

Instrument : MSVOA_X
 ClientSampleId : PB149377ZHE#01



Tgt Ion: 84 Resp: 3370

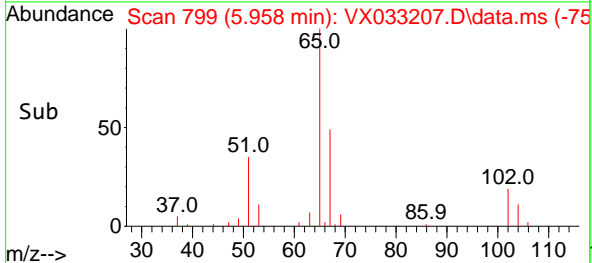
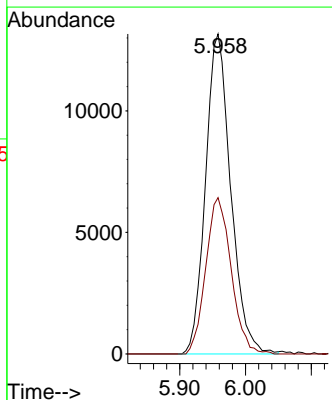
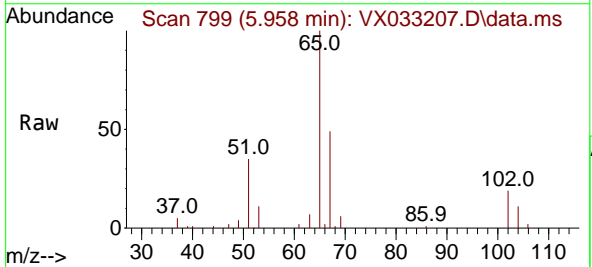
Ion	Ratio	Lower	Upper
84	100		
49	103.7	101.0	151.6
51	34.6	31.1	46.7
86	53.8	52.3	78.5

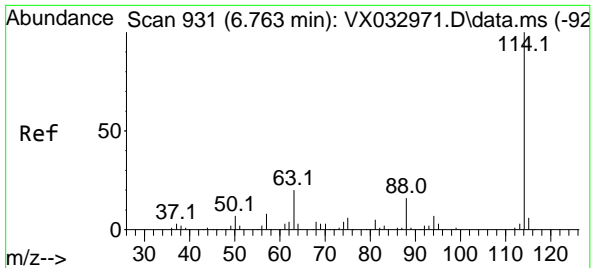


#33
 1,2-Dichloroethane-d4
 Concen: 30.537 ug/l
 RT: 5.958 min Scan# 799
 Delta R.T. 0.000 min
 Lab File: VX033207.D
 Acq: 02 Dec 2022 23:29

Tgt Ion: 65 Resp: 35106

Ion	Ratio	Lower	Upper
65	100		
67	49.3	0.0	101.8

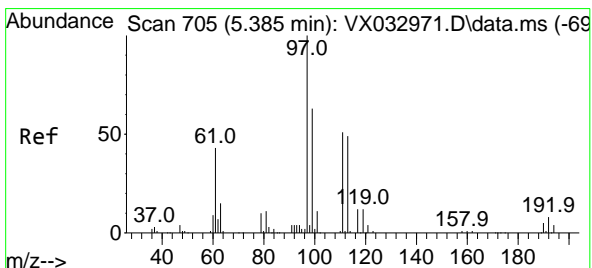
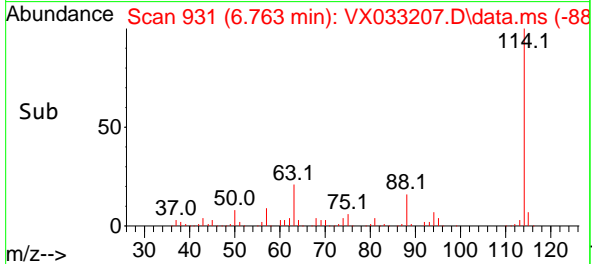
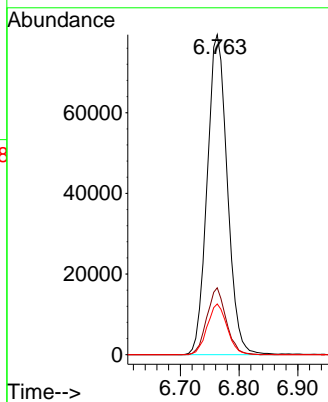
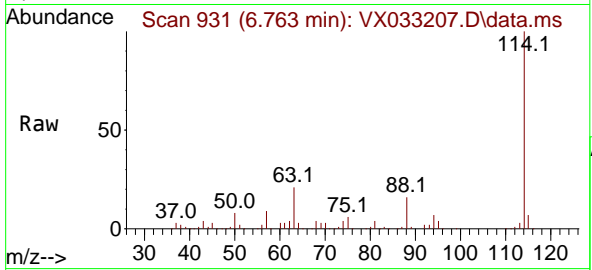




#34
 1,4-Difluorobenzene
 Concen: 50.000 ug/l
 RT: 6.763 min Scan# 91
 Delta R.T. -0.000 min
 Lab File: VX033207.D
 Acq: 02 Dec 2022 23:29

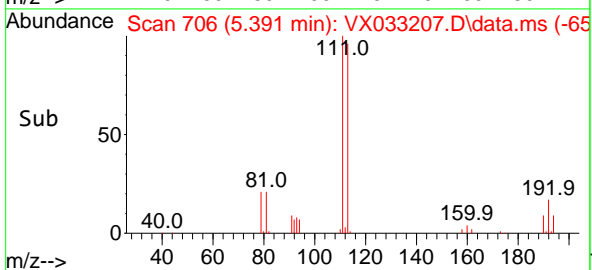
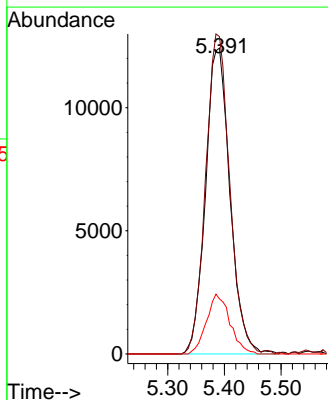
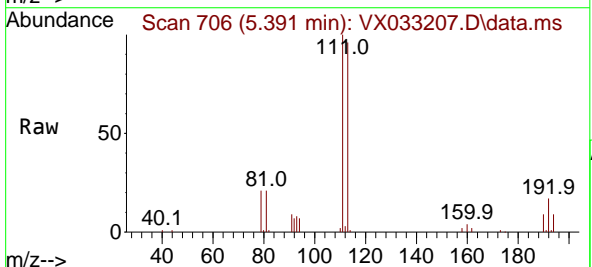
Instrument :
 MSVOA_X
 ClientSampleId :
 PB149377ZHE#01

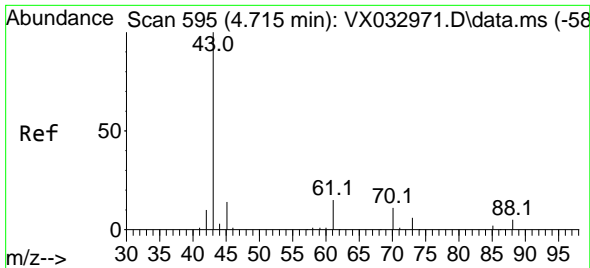
Tgt Ion	Resp	Lower	Upper
114	188859		
63	20.9	0.0	41.6
88	15.9	0.0	33.4



#35
 Dibromofluoromethane
 Concen: 34.883 ug/l
 RT: 5.391 min Scan# 706
 Delta R.T. 0.006 min
 Lab File: VX033207.D
 Acq: 02 Dec 2022 23:29

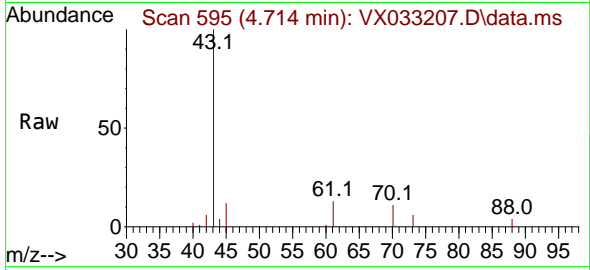
Tgt Ion	Resp	Lower	Upper
113	37141		
111	102.9	82.4	123.6
192	18.8	15.4	23.2



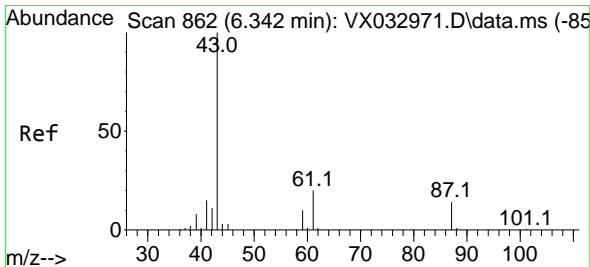
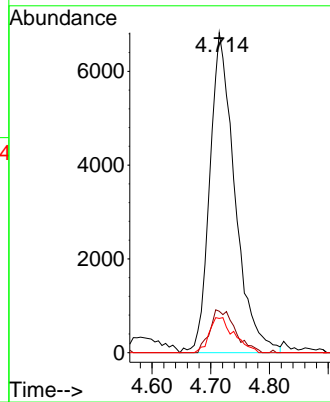
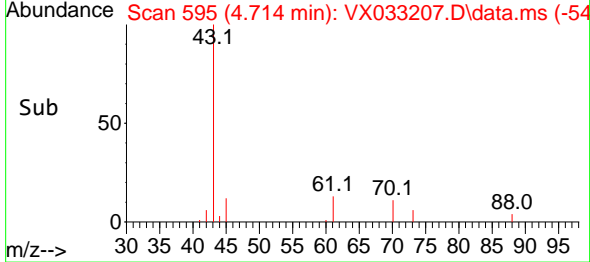


#37
 Ethyl Acetate
 Concen: 13.606 ug/l
 RT: 4.714 min Scan# 595
 Delta R.T. -0.001 min
 Lab File: VX033207.D
 Acq: 02 Dec 2022 23:29

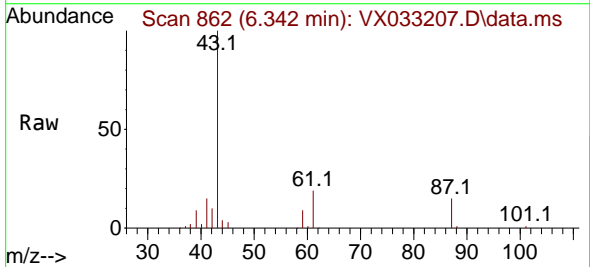
Instrument : MSVOA_X
 ClientSampleId : PB149377ZHE#01



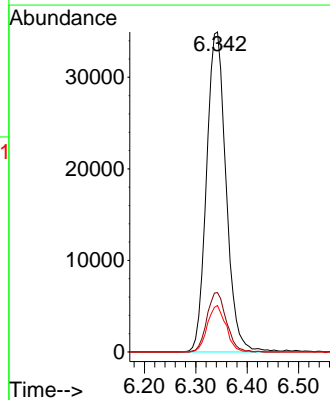
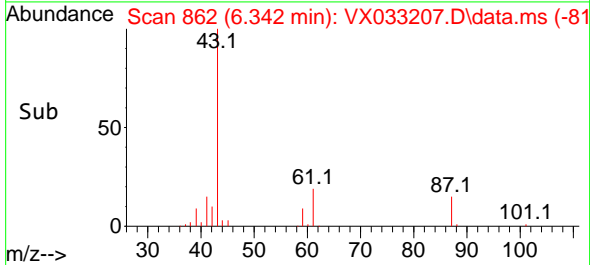
Tgt Ion: 43 Resp: 20209
 Ion Ratio Lower Upper
 43 100
 61 13.6 11.5 17.3
 70 10.9 9.1 13.7

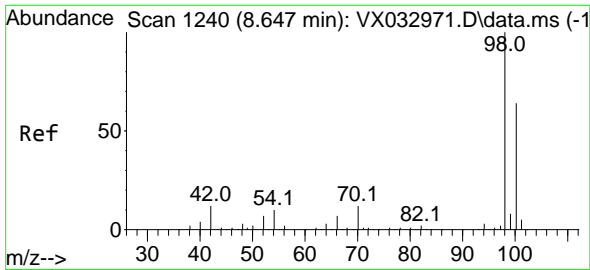


#43
 Isopropyl Acetate
 Concen: 37.502 ug/l
 RT: 6.342 min Scan# 862
 Delta R.T. 0.000 min
 Lab File: VX033207.D
 Acq: 02 Dec 2022 23:29



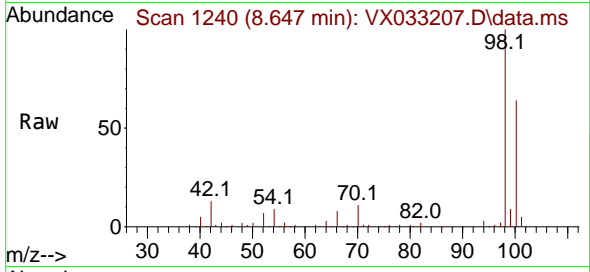
Tgt Ion: 43 Resp: 92118
 Ion Ratio Lower Upper
 43 100
 61 18.4 15.4 23.0
 87 13.8 10.8 16.2



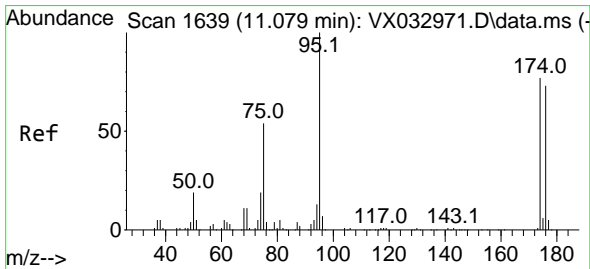
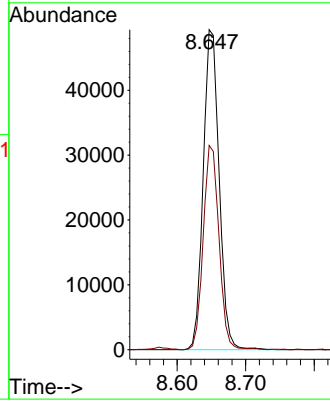
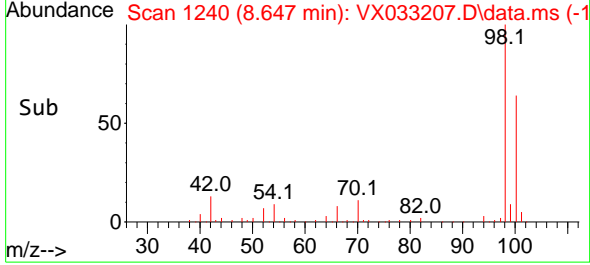


#50
 Toluene-d8
 Concen: 23.776 ug/l
 RT: 8.647 min Scan# 1111
 Delta R.T. -0.006 min
 Lab File: VX033207.D
 Acq: 02 Dec 2022 23:29

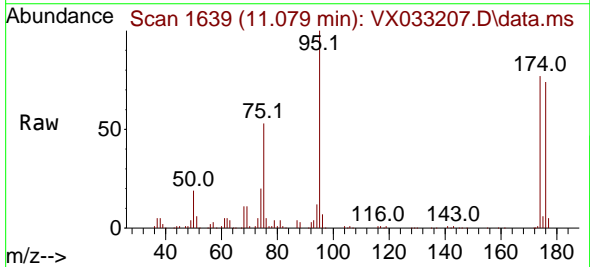
Instrument : MSVOA_X
 ClientSampleId : PB149377ZHE#01



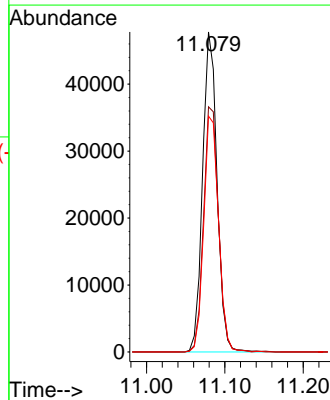
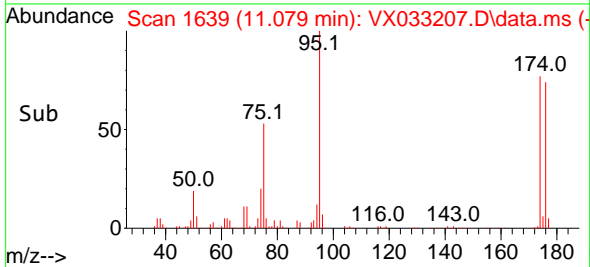
Tgt Ion: 98 Resp: 79792
 Ion Ratio Lower Upper
 98 100
 100 63.3 50.9 76.3

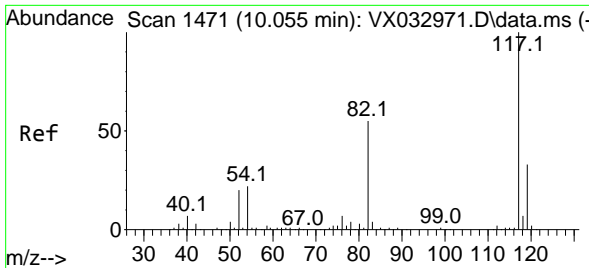


#62
 4-Bromofluorobenzene
 Concen: 43.763 ug/l
 RT: 11.079 min Scan# 1639
 Delta R.T. 0.000 min
 Lab File: VX033207.D
 Acq: 02 Dec 2022 23:29



Tgt Ion: 95 Resp: 61208
 Ion Ratio Lower Upper
 95 100
 174 78.7 0.0 164.0
 176 75.8 0.0 154.4



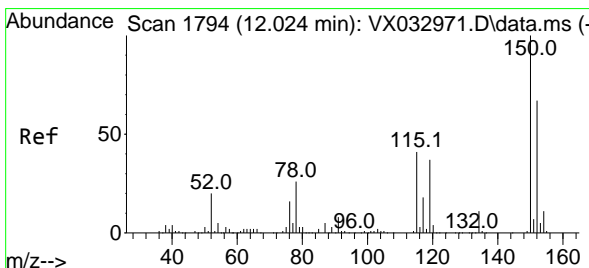
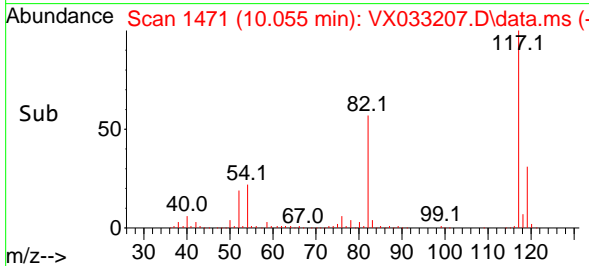
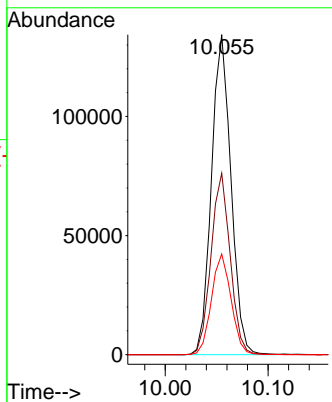
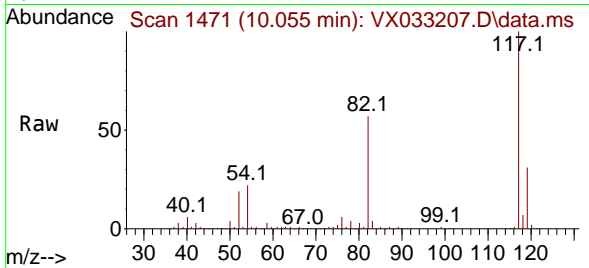


#63
 Chlorobenzene-d5
 Concen: 50.000 ug/l
 RT: 10.055 min Scan# 1471
 Delta R.T. -0.000 min
 Lab File: VX033207.D
 Acq: 02 Dec 2022 23:29

Instrument : MSVOA_X
 ClientSampleId : PB149377ZHE#01

Tgt Ion:117 Resp: 177298

Ion	Ratio	Lower	Upper
117	100		
82	56.7	44.3	66.5
119	31.4	25.7	38.5



#72
 1,4-Dichlorobenzene-d4
 Concen: 50.000 ug/l
 RT: 12.024 min Scan# 1794
 Delta R.T. 0.000 min
 Lab File: VX033207.D
 Acq: 02 Dec 2022 23:29

Tgt Ion:152 Resp: 75823

Ion	Ratio	Lower	Upper
152	100		
115	61.1	44.0	132.0
150	157.7	0.0	351.8

