

Data Path : Z:\voasrv\HPCHEM1\MSVOA_X\Data\VX120224\
 Data File : VX044057.D
 Acq On : 02 Dec 2024 11:49
 Operator : JC/MD
 Sample : P5021-02 10X
 Misc : 5.0mL/MSVOA_X/WATER
 ALS Vial : 7 Sample Multiplier: 1

Instrument :
 MSVOA_X
 ClientSampleId :

Quant Time: Dec 03 00:16:14 2024
 Quant Method : Z:\voasrv\HPCHEM1\MSVOA_X\Method\82X112124W.M
 Quant Title : SW846 8260
 QLast Update : Fri Nov 22 03:45:52 2024
 Response via : Initial Calibration

Compound	R.T.	QIon	Response	Conc	Units	Dev(Min)
Internal Standards						
1) Pentafluorobenzene	5.544	168	123344	50.000	ug/l	0.00
34) 1,4-Difluorobenzene	6.757	114	229138	50.000	ug/l	0.00
63) Chlorobenzene-d5	10.049	117	199363	50.000	ug/l	0.00
72) 1,4-Dichlorobenzene-d4	12.018	152	92150	50.000	ug/l	0.00
System Monitoring Compounds						
33) 1,2-Dichloroethane-d4	5.952	65	103454	48.901	ug/l	0.00
Spiked Amount	50.000	Range 74 - 125	Recovery	=	97.800%	
35) Dibromofluoromethane	5.385	113	78520	47.957	ug/l	0.00
Spiked Amount	50.000	Range 75 - 124	Recovery	=	95.920%	
50) Toluene-d8	8.647	98	275436	48.802	ug/l	0.00
Spiked Amount	50.000	Range 86 - 113	Recovery	=	97.600%	
62) 4-Bromofluorobenzene	11.079	95	99125	51.606	ug/l	0.00
Spiked Amount	50.000	Range 77 - 121	Recovery	=	103.220%	
Target Compounds						
						Qvalue
5) Bromomethane	1.605	94	553	0.514	ug/l #	50
6) Chloroethane	1.642	64	736	0.691	ug/l #	42
11) Tert butyl alcohol	3.001	59	557	1.640	ug/l #	73
13) Acrolein	2.233	56	114	0.319	ug/l #	13
15) Acrylonitrile	3.087	53	841	1.016	ug/l #	58
16) Acetone	2.386	43	1286	1.324	ug/l #	85
17) Carbon Disulfide	2.501	76	594	0.203	ug/l #	76
18) Methyl Acetate	2.709	43	721	0.319	ug/l #	52
19) Methyl tert-butyl Ether	3.111	73	12908	2.501	ug/l #	43
20) Methylene Chloride	2.782	84	434	0.263	ug/l #	75
31) Cyclohexane	5.464	56	13515	5.732	ug/l	92
36) 1,1-Dichloropropene	5.537	75	12257	6.007	ug/l #	50
38) Carbon Tetrachloride	5.537	117	14408	6.285	ug/l #	17
39) Methylcyclohexane	7.372	83	8295	3.130	ug/l	93
40) Benzene	6.031	78	117250	18.449	ug/l	99
42) 1,2-Dichloroethane	6.098	62	768	0.301	ug/l	95
51) 4-Methyl-2-Pentanone	8.580	43	514	0.209	ug/l #	81
52) Toluene	8.714	92	3695	0.971	ug/l	85
55) 1,1,2-Trichloroethane	9.098	97	856	0.545	ug/l #	15
67) Ethyl Benzene	10.189	91	201719	27.188	ug/l	99
68) m/p-Xylenes	10.299	106	105899	38.274	ug/l	99
69) o-Xylene	10.640	106	73869	27.344	ug/l	94
70) Styrene	10.640	104	4216	0.944	ug/l #	1
73) Isopropylbenzene	10.963	105	41146	5.809	ug/l	97
76) 1,2,3-Trichloropropane	11.079	75	56128	27.775	ug/l #	34
78) n-propylbenzene	11.305	91	104791	13.246	ug/l	97
79) 2-Chlorotoluene	11.396	91	10892	2.177	ug/l #	41
80) 1,3,5-Trimethylbenzene	11.396	105	88441	15.176	ug/l	74
81) trans-1,4-Dichloro-2-b...	11.079	75	56128	75.790	ug/l #	7
82) 4-Chlorotoluene	11.396	91	10892	1.929	ug/l #	46
83) tert-Butylbenzene	11.750	119	41656	7.212	ug/l #	52
84) 1,2,4-Trimethylbenzene	11.750	105	355336	61.244	ug/l	100
85) sec-Butylbenzene	11.750	105	355336	50.209	ug/l #	57
86) p-Isopropyltoluene	12.006	119	2515	0.437	ug/l #	70
89) n-Butylbenzene	12.335	91	7040	1.389	ug/l #	55
90) Hexachloroethane	12.609	117	6803	6.959	ug/l #	18

Data Path : Z:\voasrv\HPCHEM1\MSVOA_X\Data\VX120224\
Data File : VX044057.D
Acq On : 02 Dec 2024 11:49
Operator : JC/MD
Sample : P5021-02 10X
Misc : 5.0mL/MSVOA_X/WATER
ALS Vial : 7 Sample Multiplier: 1

Instrument :
MSVOA_X
ClientSampleId :

Quant Time: Dec 03 00:16:14 2024
Quant Method : Z:\voasrv\HPCHEM1\MSVOA_X\Method\82X112124W.M
Quant Title : SW846 8260
QLast Update : Fri Nov 22 03:45:52 2024
Response via : Initial Calibration

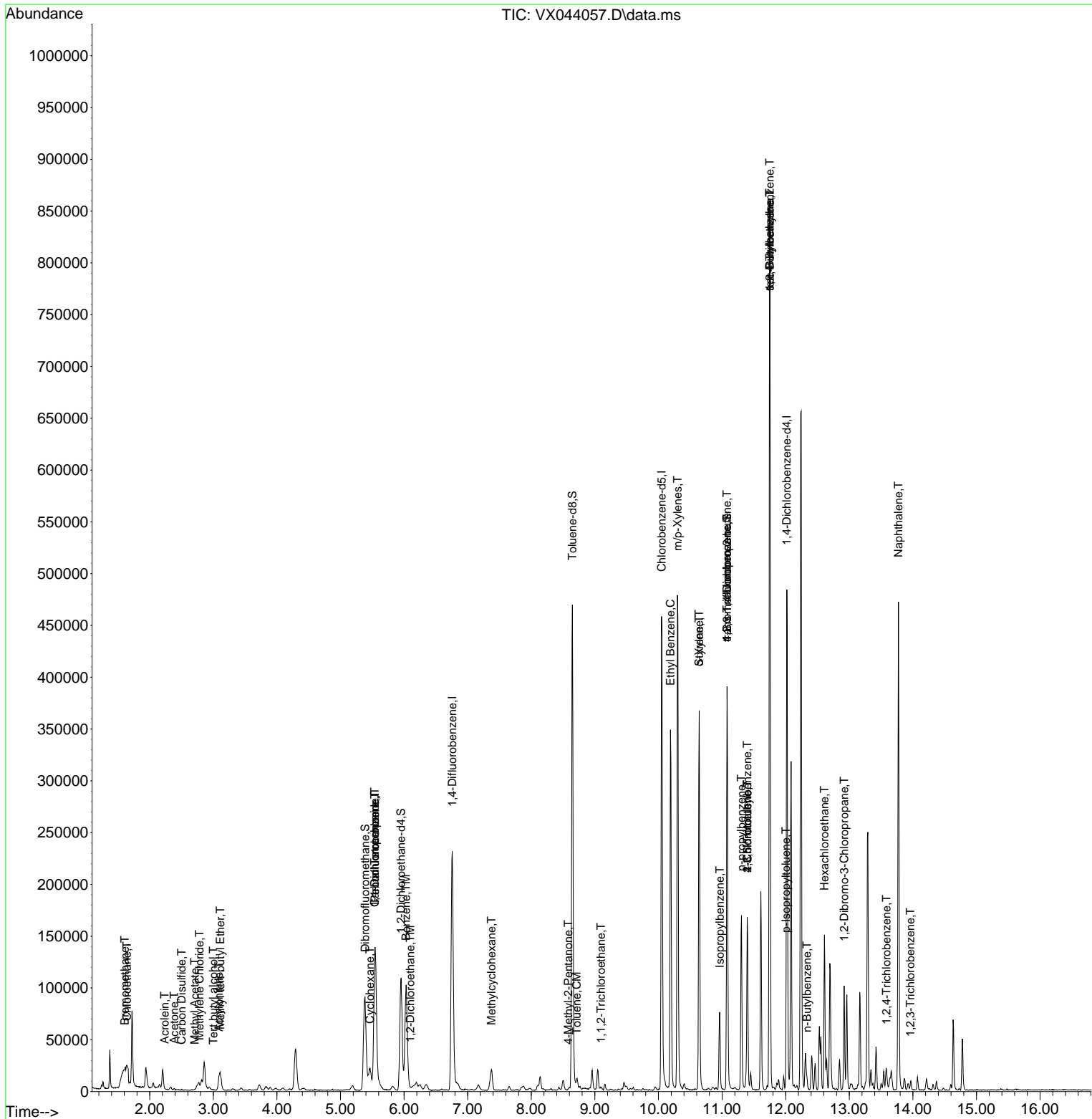
Compound	R.T.	QIon	Response	Conc	Units	Dev(Min)
92) 1,2-Dibromo-3-Chloropr...	12.920	75	384	0.790	ug/l #	4
93) 1,2,4-Trichlorobenzene	13.585	180	534	0.292	ug/l #	45
95) Naphthalene	13.774	128	266488	40.430	ug/l	99
96) 1,2,3-Trichlorobenzene	13.963	180	540	0.291	ug/l #	65

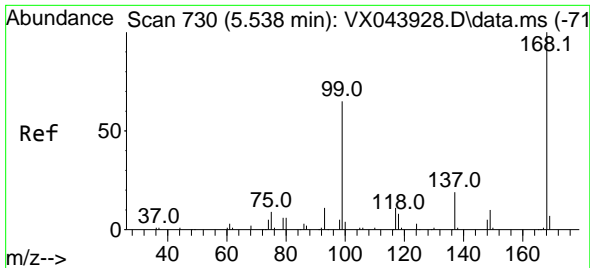
(#) = qualifier out of range (m) = manual integration (+) = signals summed

Data Path : Z:\voasrv\HPCHEM1\MSVOA_X\Data\VX120224\
 Data File : VX044057.D
 Acq On : 02 Dec 2024 11:49
 Operator : JC/MD
 Sample : P5021-02 10X
 Misc : 5.0mL/MSVOA_X/WATER
 ALS Vial : 7 Sample Multiplier: 1

Instrument :
 MSVOA_X
 ClientSampleId :

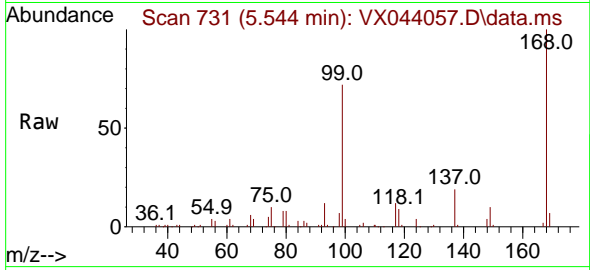
Quant Time: Dec 03 00:16:14 2024
 Quant Method : Z:\voasrv\HPCHEM1\MSVOA_X\Method\82X112124W.M
 Quant Title : SW846 8260
 QLast Update : Fri Nov 22 03:45:52 2024
 Response via : Initial Calibration



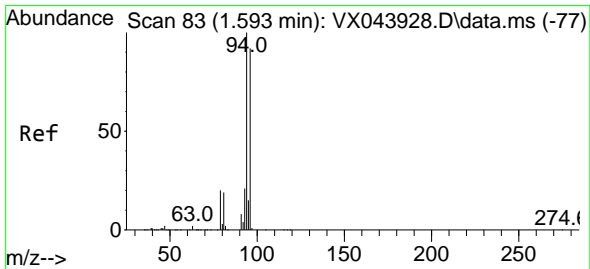
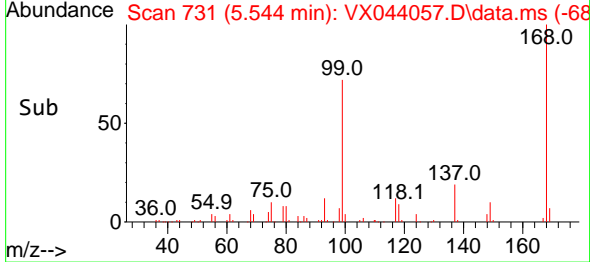
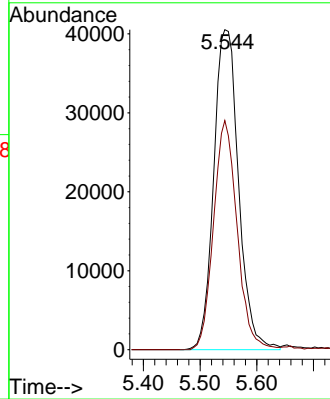


#1
 Pentafluorobenzene
 Concen: 50.000 ug/l
 RT: 5.544 min Scan# 71
 Delta R.T. 0.006 min
 Lab File: VX044057.D
 Acq: 02 Dec 2024 11:49

Instrument :
 MSVOA_X
 ClientSampleId :

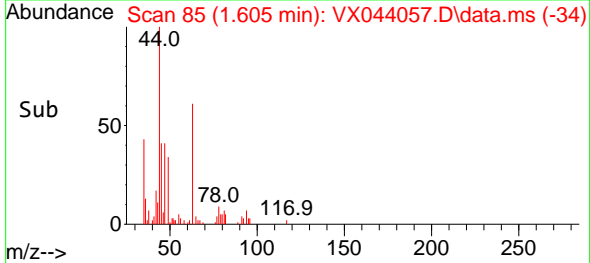
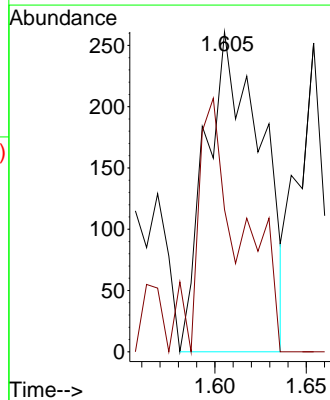
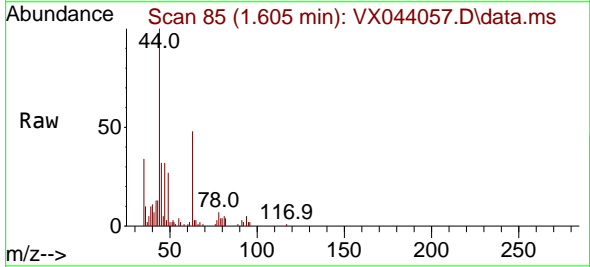


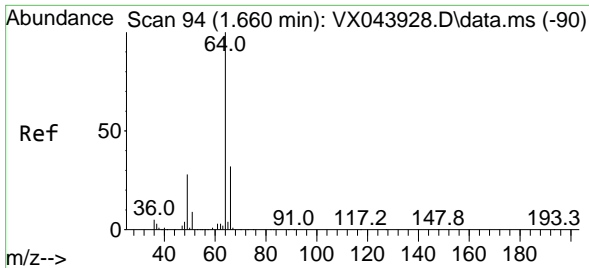
Tgt Ion:168 Resp: 123344
 Ion Ratio Lower Upper
 168 100
 99 71.6 51.8 77.8



#5
 Bromomethane
 Concen: 0.514 ug/l
 RT: 1.605 min Scan# 85
 Delta R.T. 0.012 min
 Lab File: VX044057.D
 Acq: 02 Dec 2024 11:49

Tgt Ion: 94 Resp: 553
 Ion Ratio Lower Upper
 94 100
 96 44.4 73.9 110.9#

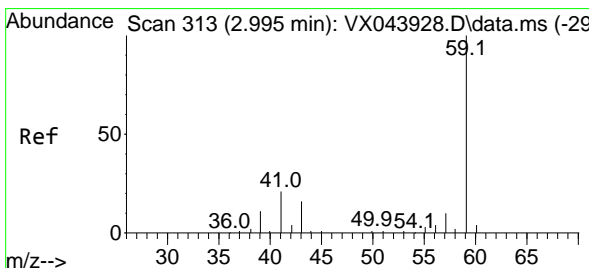
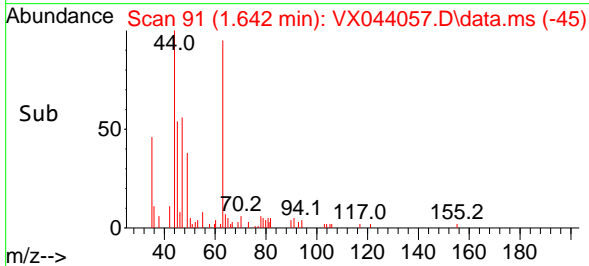
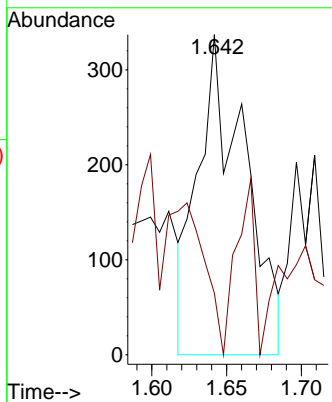
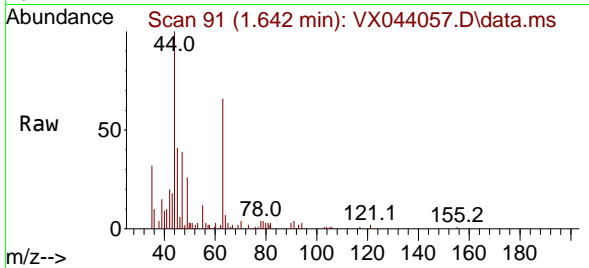




#6
 Chloroethane
 Concen: 0.691 ug/l
 RT: 1.642 min Scan# 91
 Delta R.T. -0.019 min
 Lab File: VX044057.D
 Acq: 02 Dec 2024 11:49

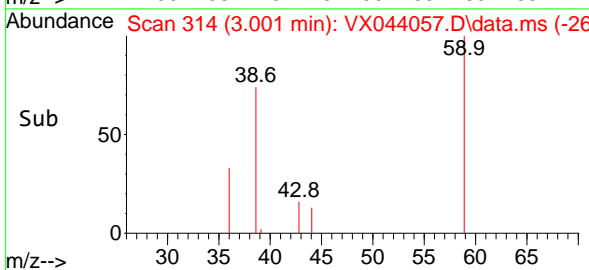
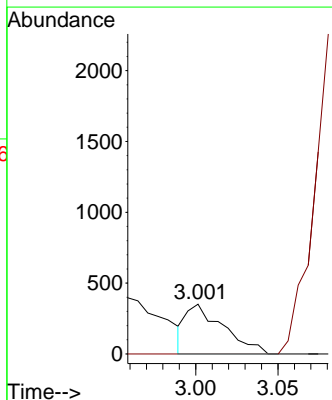
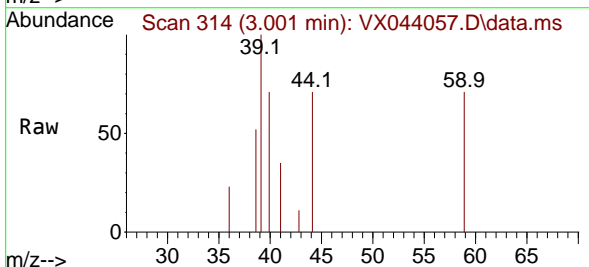
Instrument :
 MSVOA_X
 ClientSampleId :

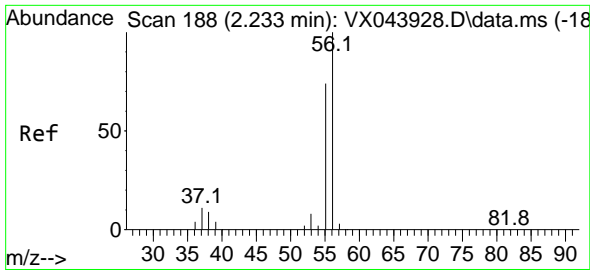
Tgt Ion: 64 Resp: 736
 Ion Ratio Lower Upper
 64 100
 66 0.0 25.9 38.9#



#11
 Tert butyl alcohol
 Concen: 1.640 ug/l
 RT: 3.001 min Scan# 314
 Delta R.T. 0.006 min
 Lab File: VX044057.D
 Acq: 02 Dec 2024 11:49

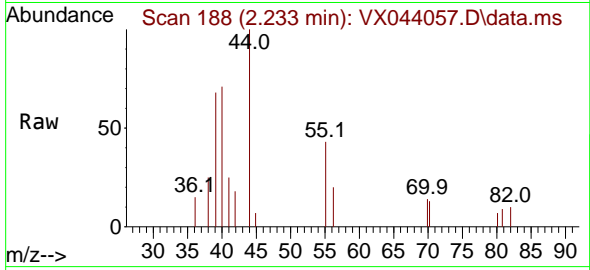
Tgt Ion: 59 Resp: 557
 Ion Ratio Lower Upper
 59 100
 57 0.0 7.9 11.9#



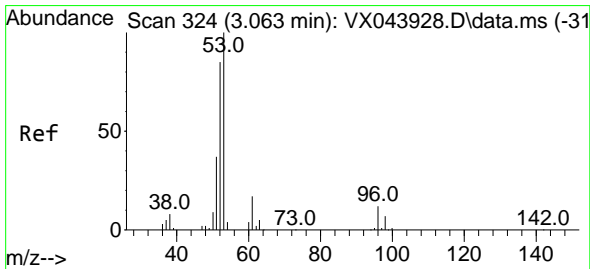
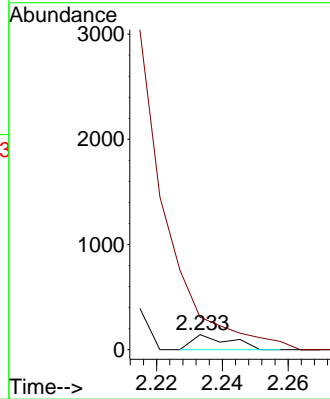
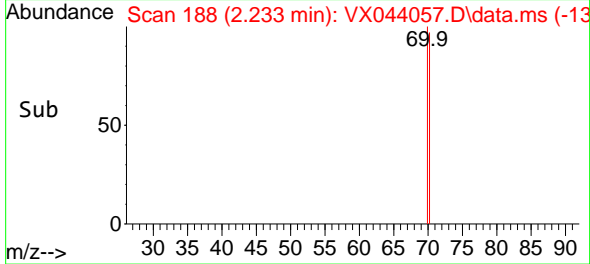


#13
 Acrolein
 Concen: 0.319 ug/l
 RT: 2.233 min Scan# 11
 Delta R.T. -0.000 min
 Lab File: VX044057.D
 Acq: 02 Dec 2024 11:49

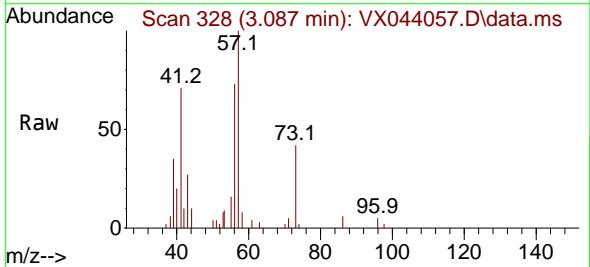
Instrument : MSVOA_X
 ClientSampleId :



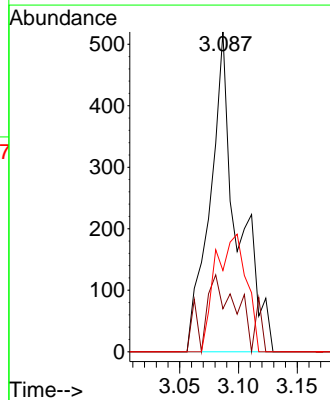
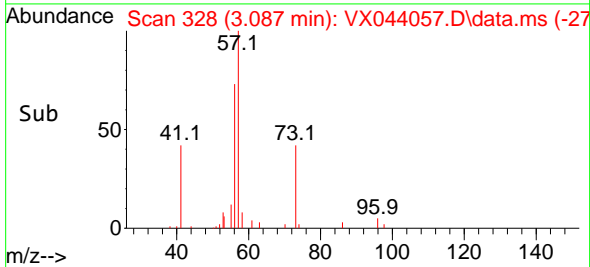
Tgt Ion: 56 Resp: 114
 Ion Ratio Lower Upper
 56 100
 55 0.0 58.2 87.2#

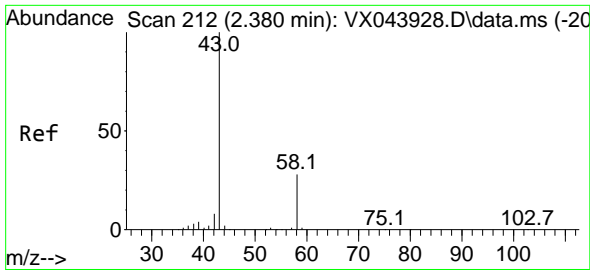


#15
 Acrylonitrile
 Concen: 1.016 ug/l
 RT: 3.087 min Scan# 328
 Delta R.T. 0.024 min
 Lab File: VX044057.D
 Acq: 02 Dec 2024 11:49



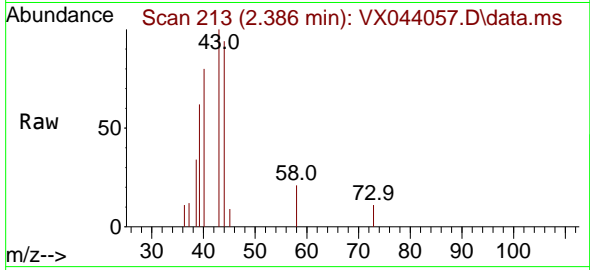
Tgt Ion: 53 Resp: 841
 Ion Ratio Lower Upper
 53 100
 52 30.9 66.5 99.7#
 51 41.4 30.2 45.4



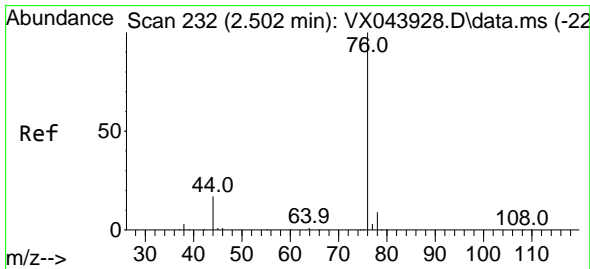
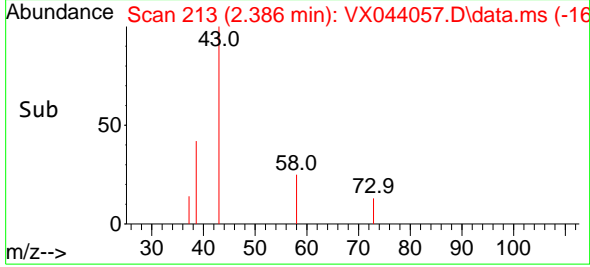
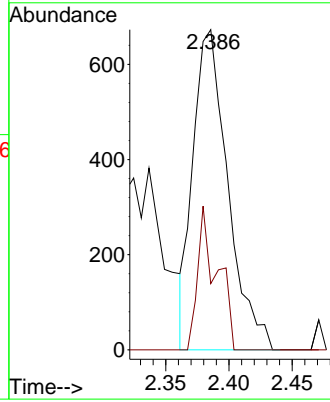


#16
 Acetone
 Concen: 1.324 ug/l
 RT: 2.386 min Scan# 212
 Delta R.T. 0.006 min
 Lab File: VX044057.D
 Acq: 02 Dec 2024 11:49

Instrument :
 MSVOA_X
 ClientSampleId :

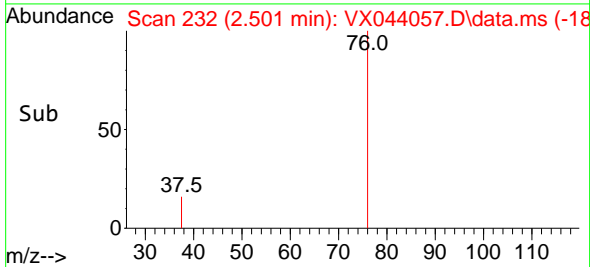
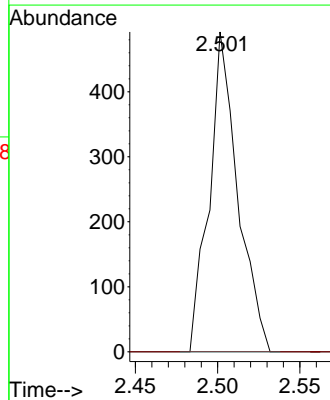
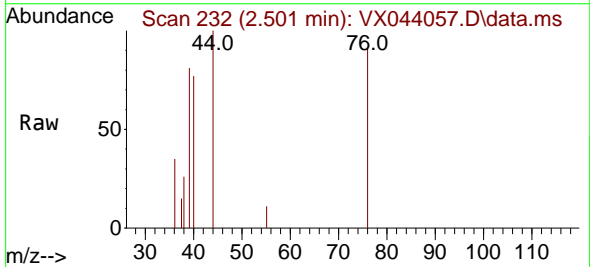


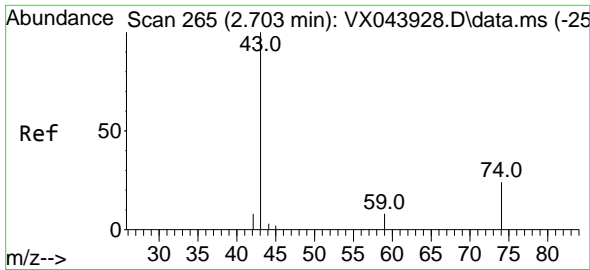
Tgt Ion: 43 Resp: 1286
 Ion Ratio Lower Upper
 43 100
 58 20.7 22.7 34.1#



#17
 Carbon Disulfide
 Concen: 0.203 ug/l
 RT: 2.501 min Scan# 232
 Delta R.T. -0.000 min
 Lab File: VX044057.D
 Acq: 02 Dec 2024 11:49

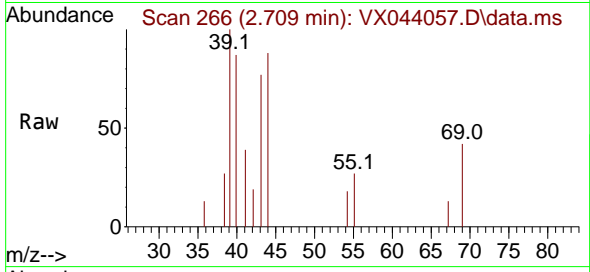
Tgt Ion: 76 Resp: 594
 Ion Ratio Lower Upper
 76 100
 78 0.0 7.0 10.6#



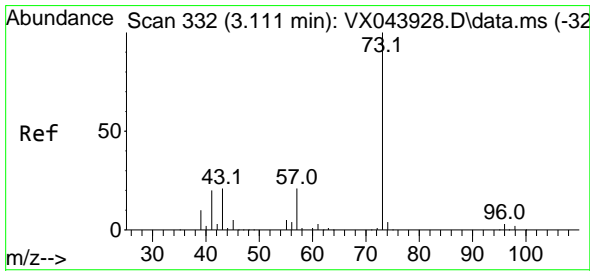
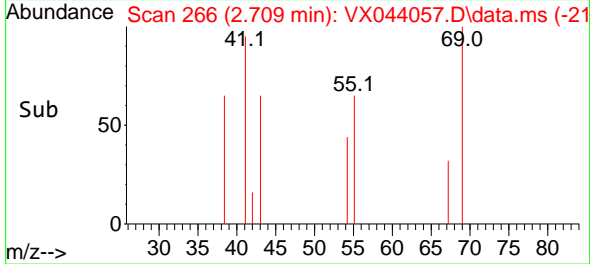
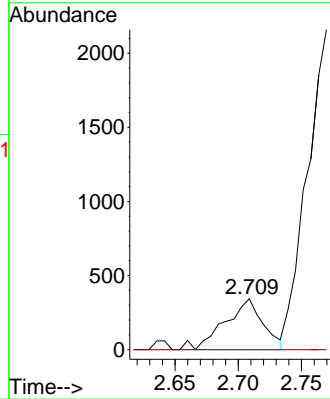


#18
 Methyl Acetate
 Concen: 0.319 ug/l
 RT: 2.709 min Scan# 20
 Delta R.T. 0.006 min
 Lab File: VX044057.D
 Acq: 02 Dec 2024 11:49

Instrument :
 MSVOA_X
 ClientSampleId :

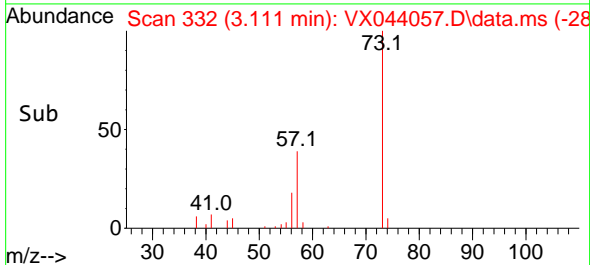
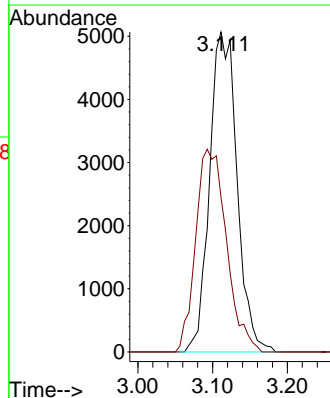
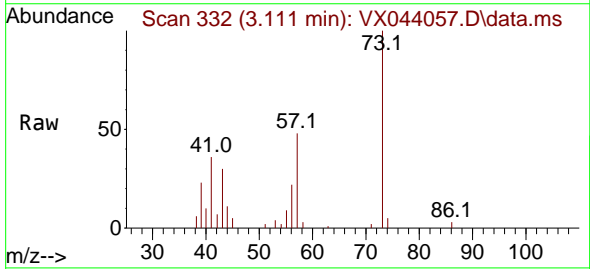


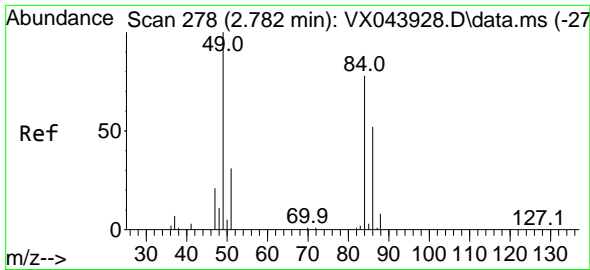
Tgt Ion: 43 Resp: 721
 Ion Ratio Lower Upper
 43 100
 74 0.0 18.9 28.3#



#19
 Methyl tert-butyl Ether
 Concen: 2.501 ug/l
 RT: 3.111 min Scan# 332
 Delta R.T. -0.000 min
 Lab File: VX044057.D
 Acq: 02 Dec 2024 11:49

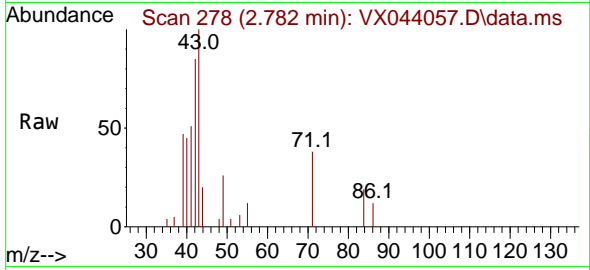
Tgt Ion: 73 Resp: 12908
 Ion Ratio Lower Upper
 73 100
 57 48.3 17.0 25.6#



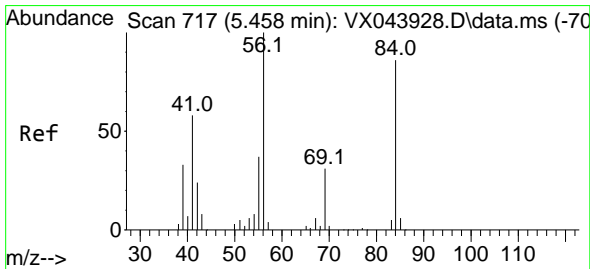
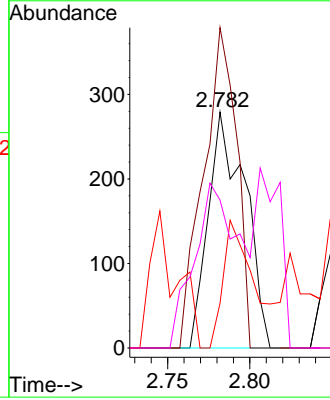
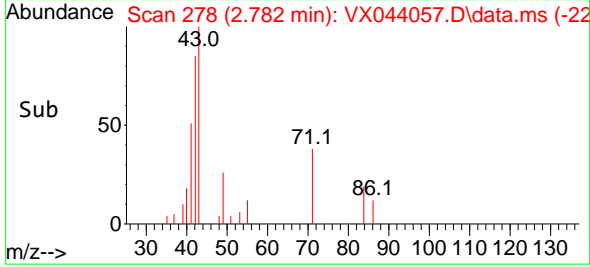


#20
 Methylene Chloride
 Concen: 0.263 ug/l
 RT: 2.782 min Scan# 21
 Delta R.T. -0.000 min
 Lab File: VX044057.D
 Acq: 02 Dec 2024 11:49

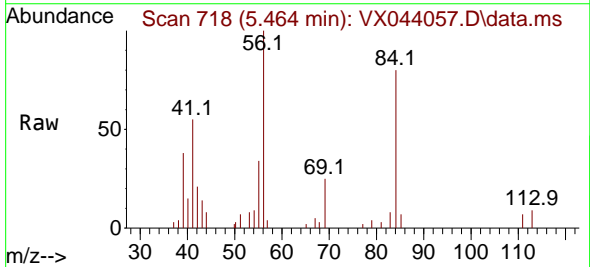
Instrument :
 MSVOA_X
 ClientSampleId :



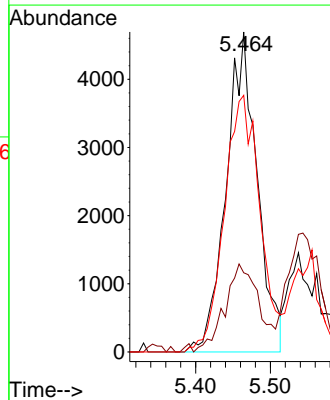
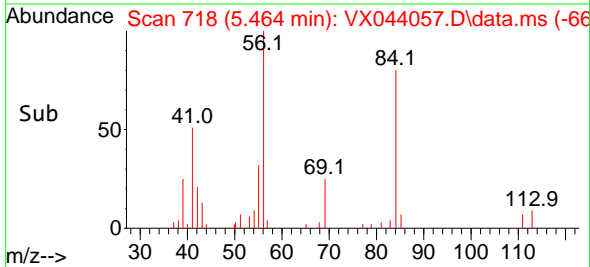
Tgt Ion: 84 Resp: 434
 Ion Ratio Lower Upper
 84 100
 49 135.8 102.7 154.1
 51 0.0 31.7 47.5#
 86 38.0 53.9 80.9#

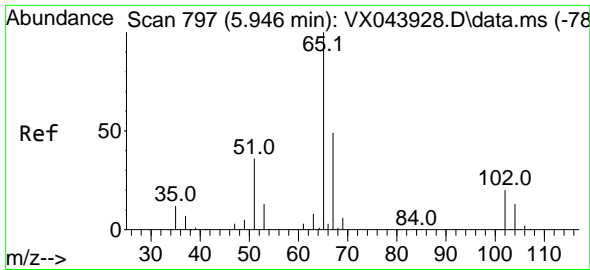


#31
 Cyclohexane
 Concen: 5.732 ug/l
 RT: 5.464 min Scan# 718
 Delta R.T. 0.006 min
 Lab File: VX044057.D
 Acq: 02 Dec 2024 11:49



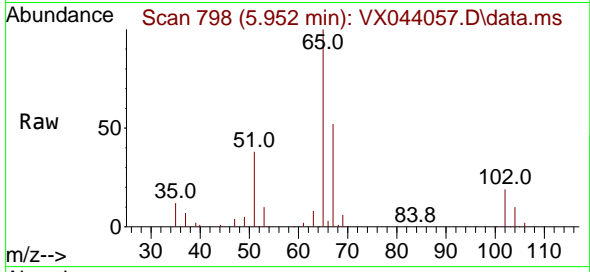
Tgt Ion: 56 Resp: 13515
 Ion Ratio Lower Upper
 56 100
 69 24.7 24.7 37.1
 84 80.2 68.7 103.1



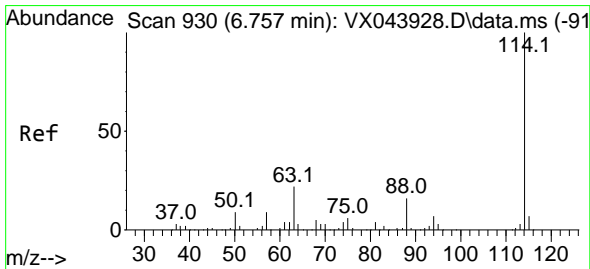
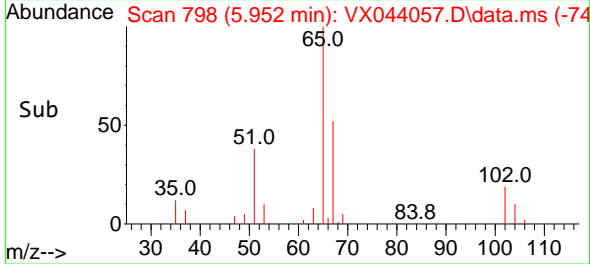
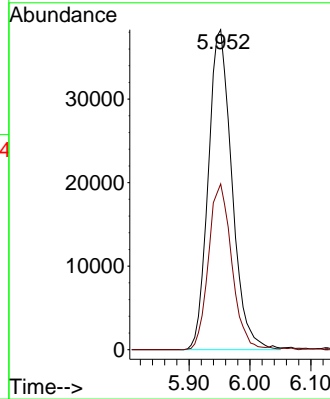


#33
 1,2-Dichloroethane-d4
 Concen: 48.901 ug/l
 RT: 5.952 min Scan# 798
 Delta R.T. 0.006 min
 Lab File: VX044057.D
 Acq: 02 Dec 2024 11:49

Instrument :
 MSVOA_X
 ClientSampleId :

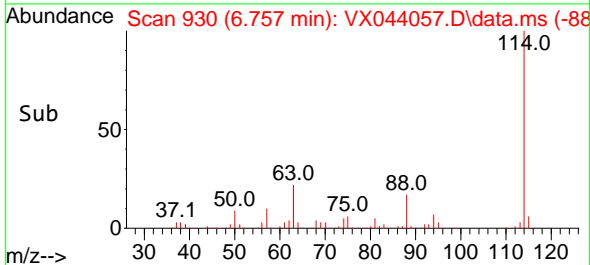
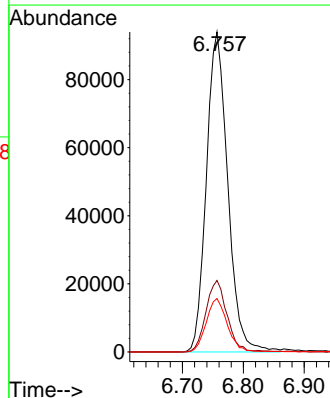
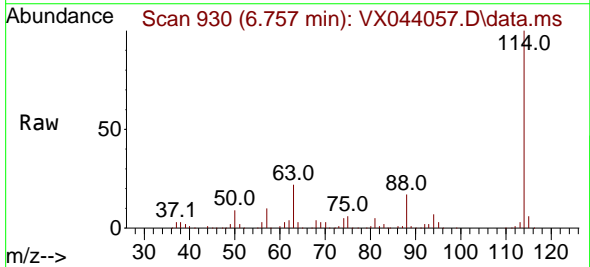


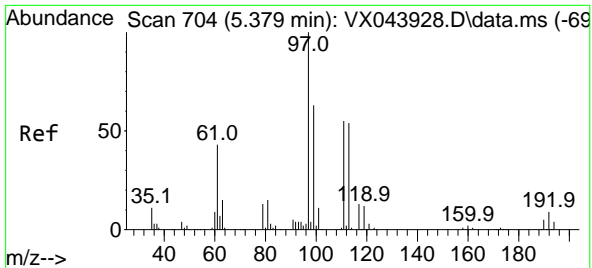
Tgt Ion: 65 Resp: 103454
 Ion Ratio Lower Upper
 65 100
 67 51.0 0.0 100.8



#34
 1,4-Difluorobenzene
 Concen: 50.000 ug/l
 RT: 6.757 min Scan# 930
 Delta R.T. -0.000 min
 Lab File: VX044057.D
 Acq: 02 Dec 2024 11:49

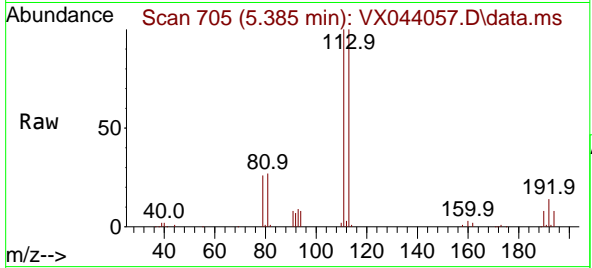
Tgt Ion: 114 Resp: 229138
 Ion Ratio Lower Upper
 114 100
 63 22.3 0.0 44.0
 88 16.7 0.0 32.4



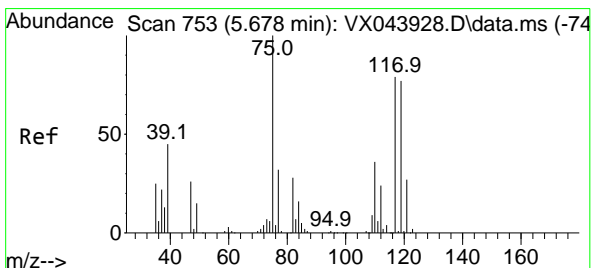
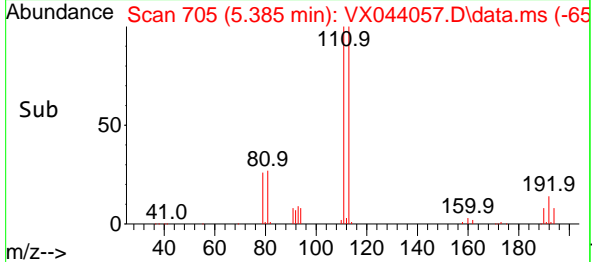
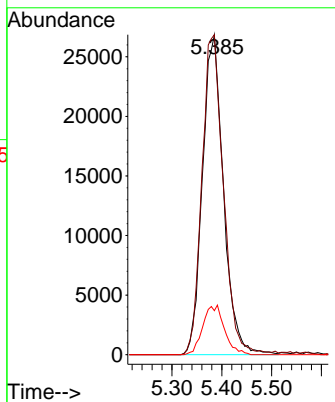


#35
 Dibromofluoromethane
 Concen: 47.957 ug/l
 RT: 5.385 min Scan# 705
 Delta R.T. 0.006 min
 Lab File: VX044057.D
 Acq: 02 Dec 2024 11:49

Instrument : MSVOA_X
 ClientSampleId :

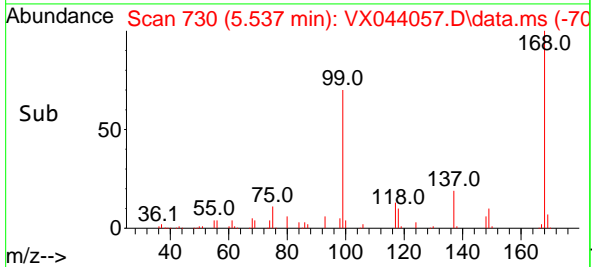
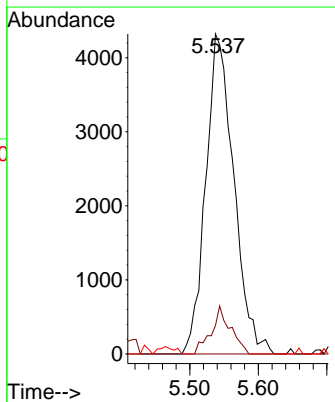
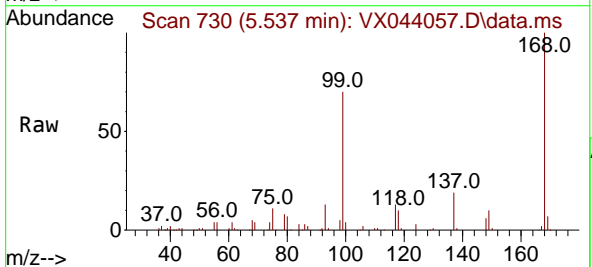


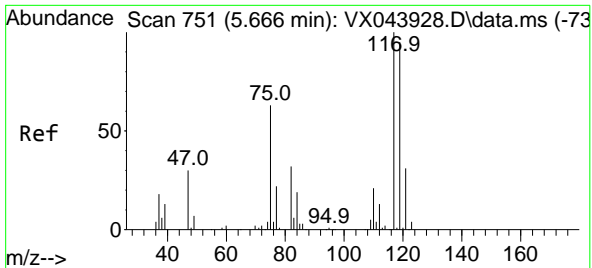
Tgt Ion: 113 Resp: 78520
 Ion Ratio Lower Upper
 113 100
 111 102.0 81.0 121.4
 192 16.0 13.0 19.6



#36
 1,1-Dichloropropene
 Concen: 6.007 ug/l
 RT: 5.537 min Scan# 730
 Delta R.T. -0.140 min
 Lab File: VX044057.D
 Acq: 02 Dec 2024 11:49

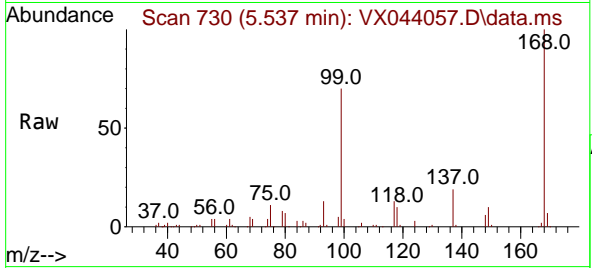
Tgt Ion: 75 Resp: 12257
 Ion Ratio Lower Upper
 75 100
 110 10.3 17.4 52.2#
 77 0.0 25.8 38.8#



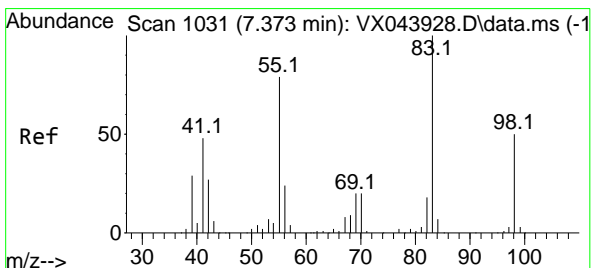
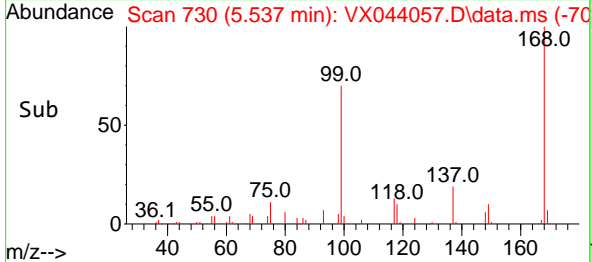
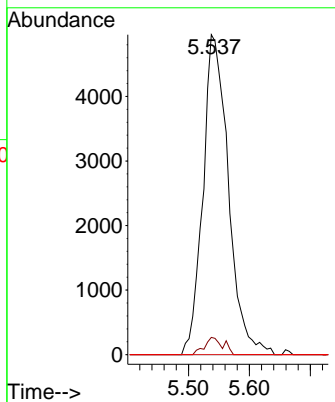


#38
 Carbon Tetrachloride
 Concen: 6.285 ug/l
 RT: 5.537 min Scan# 71
 Delta R.T. -0.128 min
 Lab File: VX044057.D
 Acq: 02 Dec 2024 11:49

Instrument :
 MSVOA_X
 ClientSampleId :

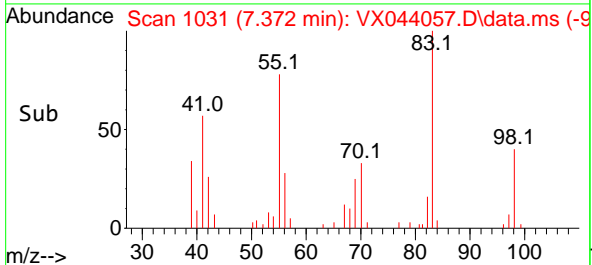
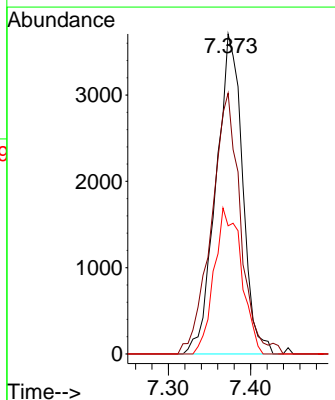
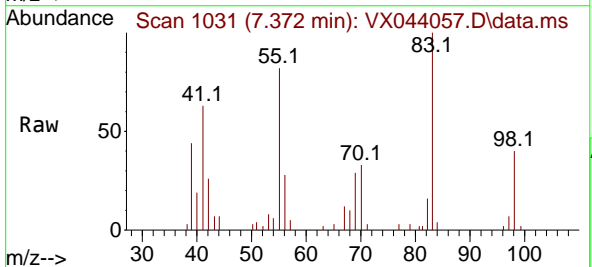


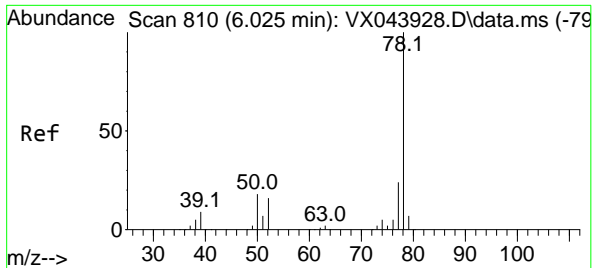
Tgt Ion:117 Resp: 14408
 Ion Ratio Lower Upper
 117 100
 119 5.4 75.2 112.8#
 121 0.0 24.5 36.7#



#39
 Methylcyclohexane
 Concen: 3.130 ug/l
 RT: 7.372 min Scan# 1031
 Delta R.T. -0.000 min
 Lab File: VX044057.D
 Acq: 02 Dec 2024 11:49

Tgt Ion: 83 Resp: 8295
 Ion Ratio Lower Upper
 83 100
 55 81.5 63.1 94.7
 98 40.0 40.0 60.0

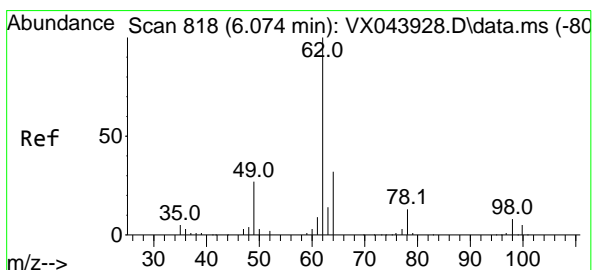
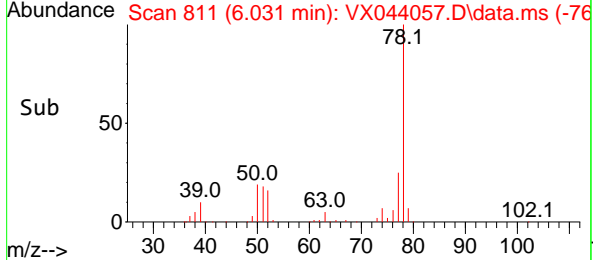
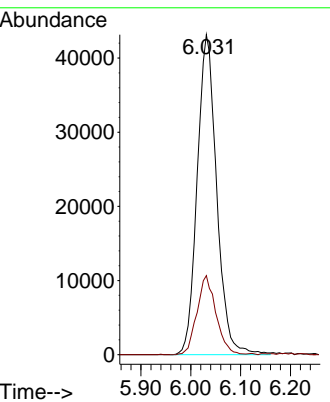
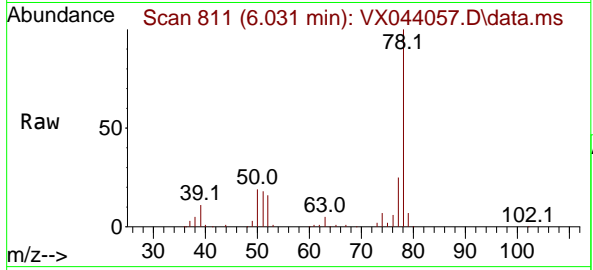




#40
Benzene
Concen: 18.449 ug/l
RT: 6.031 min Scan# 810
Delta R.T. 0.006 min
Lab File: VX044057.D
Acq: 02 Dec 2024 11:49

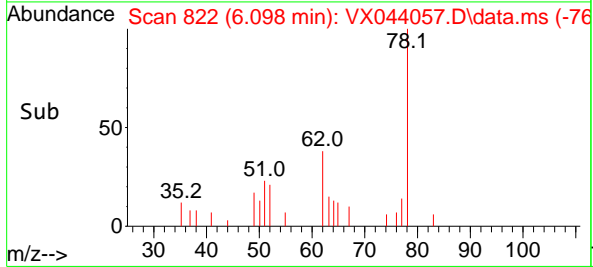
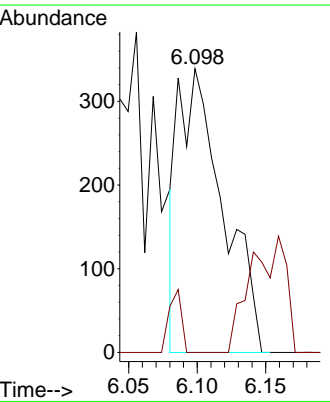
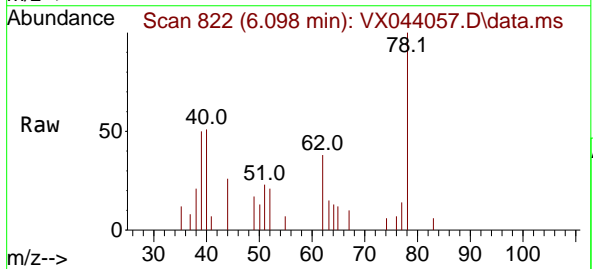
Instrument : MSVOA_X
ClientSampleId :

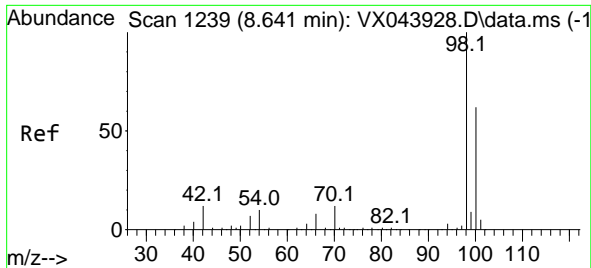
Tgt Ion: 78 Resp: 117250
Ion Ratio Lower Upper
78 100
77 24.7 19.2 28.8



#42
1,2-Dichloroethane
Concen: 0.301 ug/l
RT: 6.098 min Scan# 822
Delta R.T. 0.024 min
Lab File: VX044057.D
Acq: 02 Dec 2024 11:49

Tgt Ion: 62 Resp: 768
Ion Ratio Lower Upper
62 100
98 6.3 0.0 16.4

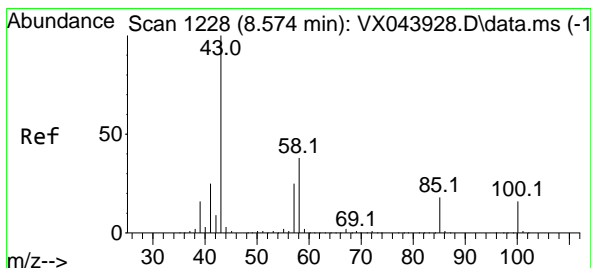
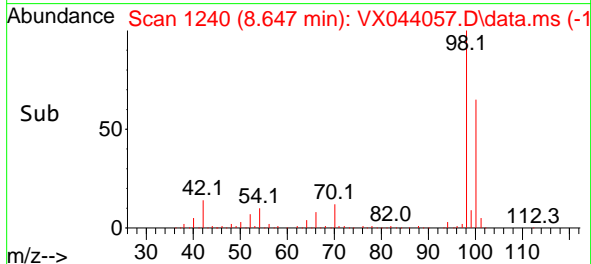
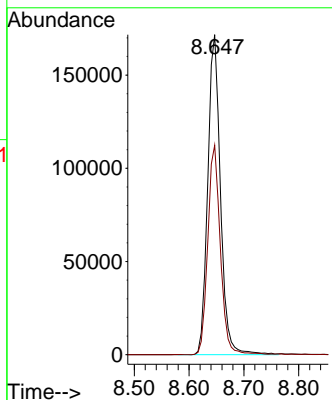
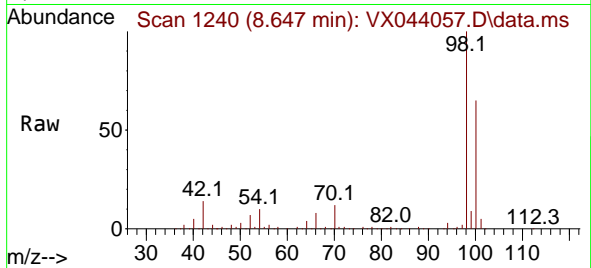




#50
 Toluene-d8
 Concen: 48.802 ug/l
 RT: 8.647 min Scan# 11
 Delta R.T. 0.006 min
 Lab File: VX044057.D
 Acq: 02 Dec 2024 11:49

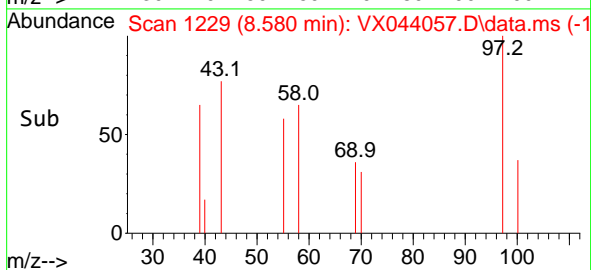
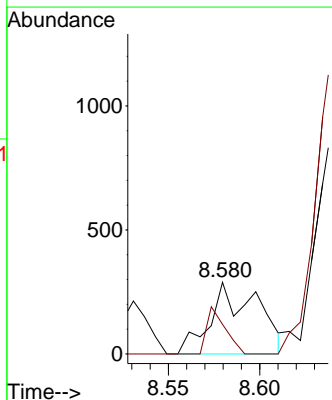
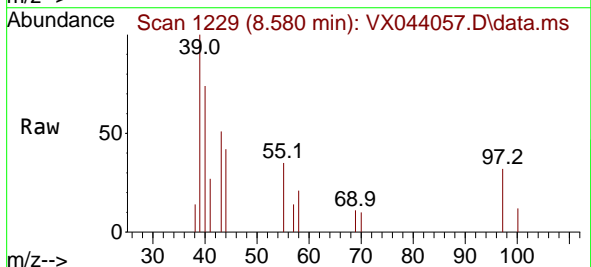
Instrument :
 MSVOA_X
 ClientSampleId :

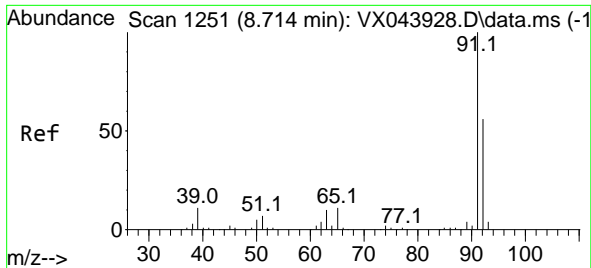
Tgt Ion: 98 Resp: 275436
 Ion Ratio Lower Upper
 98 100
 100 64.7 52.6 79.0



#51
 4-Methyl-2-Pentanone
 Concen: 0.209 ug/l
 RT: 8.580 min Scan# 1229
 Delta R.T. 0.006 min
 Lab File: VX044057.D
 Acq: 02 Dec 2024 11:49

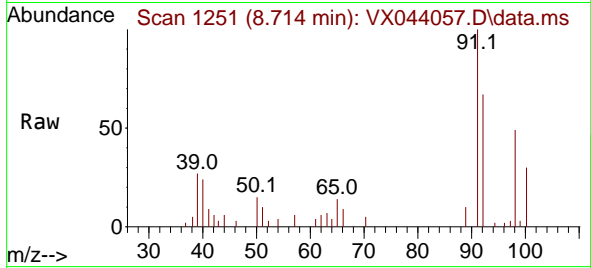
Tgt Ion: 43 Resp: 514
 Ion Ratio Lower Upper
 43 100
 58 25.9 30.0 45.0#



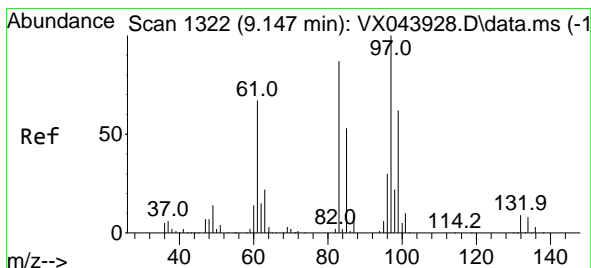
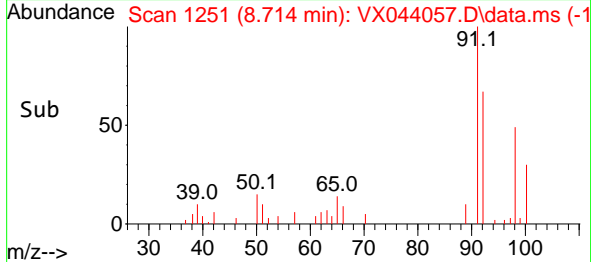
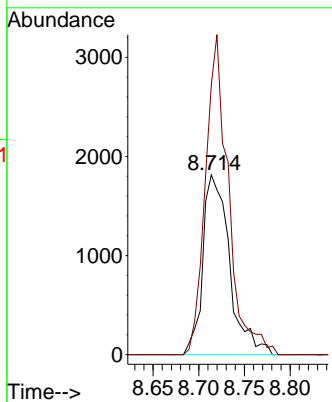


#52
 Toluene
 Concen: 0.971 ug/l
 RT: 8.714 min Scan# 1111
 Delta R.T. -0.000 min
 Lab File: VX044057.D
 Acq: 02 Dec 2024 11:49

Instrument :
 MSVOA_X
 ClientSampleId :

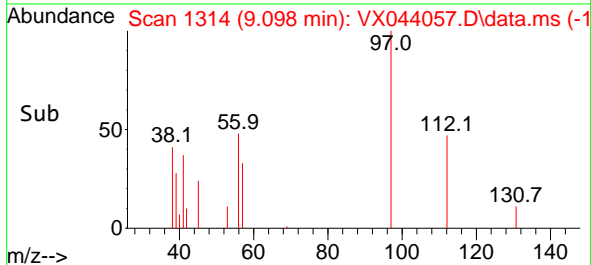
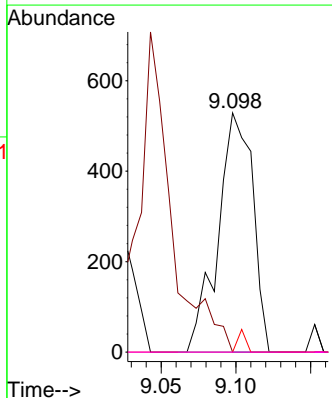
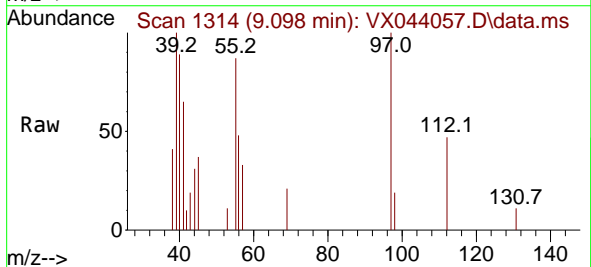


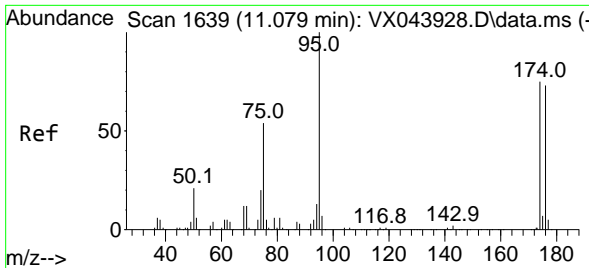
Tgt Ion: 92 Resp: 3695
 Ion Ratio Lower Upper
 92 100
 91 153.1 139.7 209.5



#55
 1,1,2-Trichloroethane
 Concen: 0.545 ug/l
 RT: 9.098 min Scan# 1314
 Delta R.T. -0.049 min
 Lab File: VX044057.D
 Acq: 02 Dec 2024 11:49

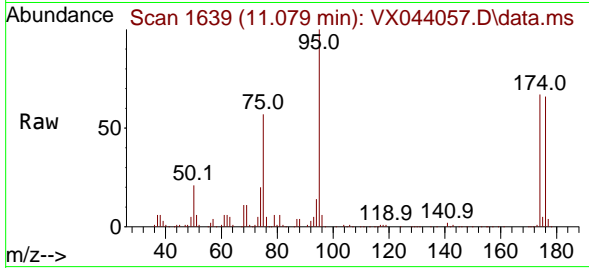
Tgt Ion: 97 Resp: 856
 Ion Ratio Lower Upper
 97 100
 83 0.0 69.4 104.0#
 85 0.0 42.3 63.5#
 99 0.0 49.6 74.4#



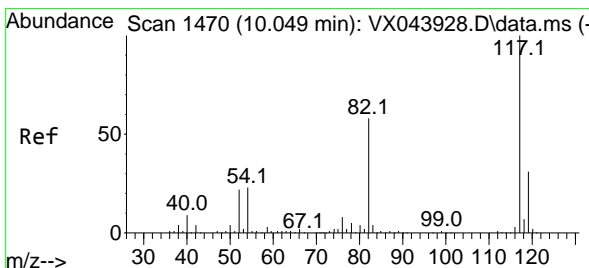
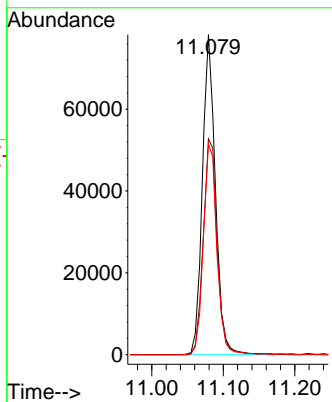
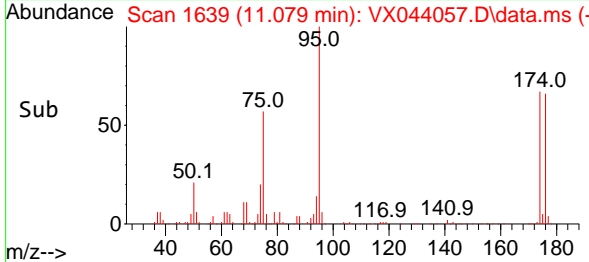


#62
 4-Bromofluorobenzene
 Concen: 51.606 ug/l
 RT: 11.079 min Scan# 1639
 Delta R.T. -0.000 min
 Lab File: VX044057.D
 Acq: 02 Dec 2024 11:49

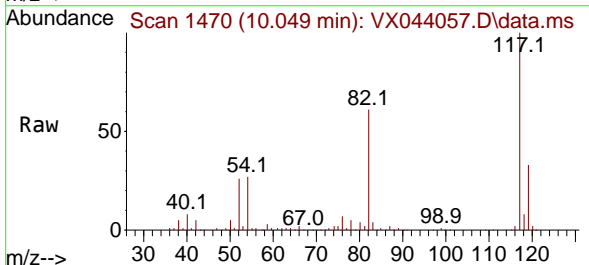
Instrument : MSVOA_X
 ClientSampleId :



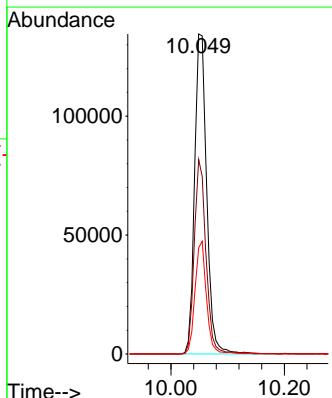
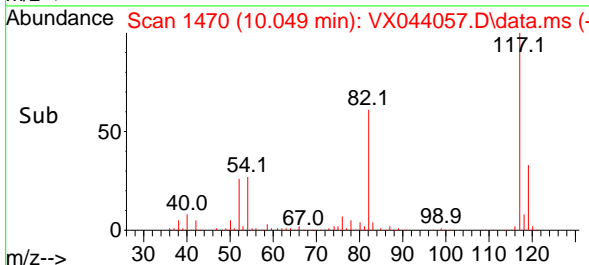
Tgt Ion: 95 Resp: 99125
 Ion Ratio Lower Upper
 95 100
 174 72.3 0.0 150.4
 176 68.0 0.0 146.0

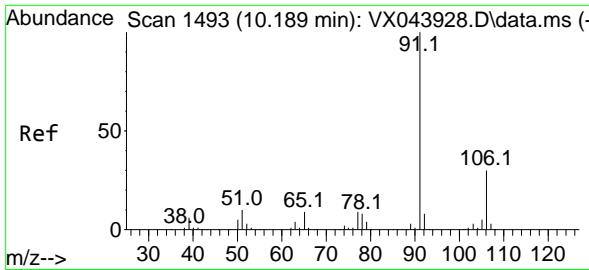


#63
 Chlorobenzene-d5
 Concen: 50.000 ug/l
 RT: 10.049 min Scan# 1470
 Delta R.T. -0.000 min
 Lab File: VX044057.D
 Acq: 02 Dec 2024 11:49



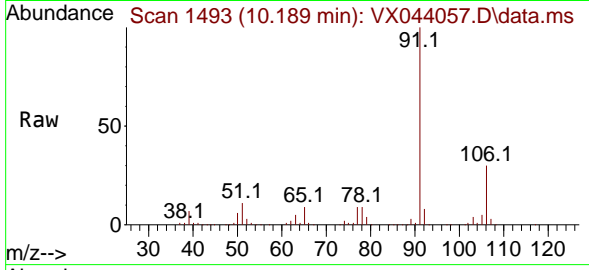
Tgt Ion: 117 Resp: 199363
 Ion Ratio Lower Upper
 117 100
 82 60.7 46.4 69.6
 119 33.2 24.6 37.0



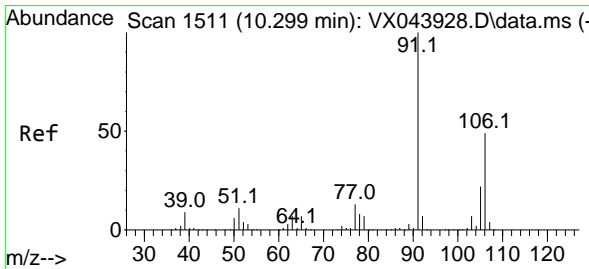
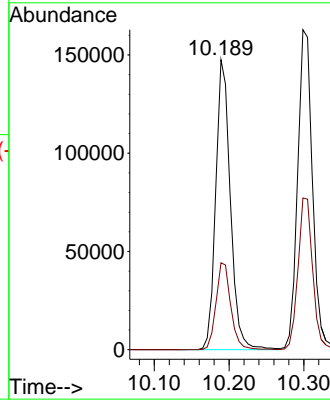
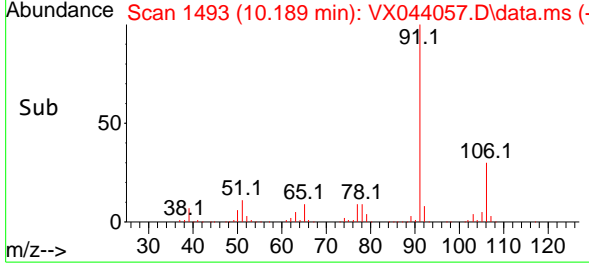


#67
 Ethyl Benzene
 Concen: 27.188 ug/l
 RT: 10.189 min Scan# 1493
 Delta R.T. -0.000 min
 Lab File: VX044057.D
 Acq: 02 Dec 2024 11:49

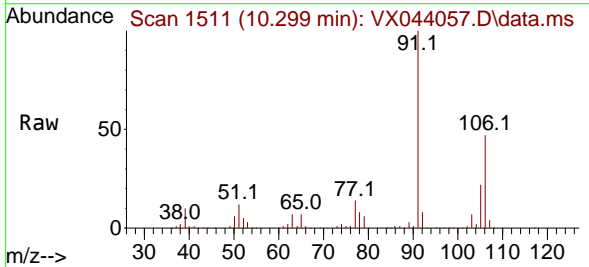
Instrument : MSVOA_X
 ClientSampleId :



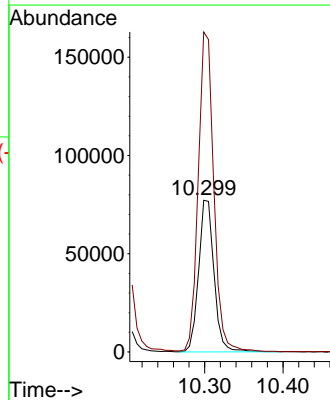
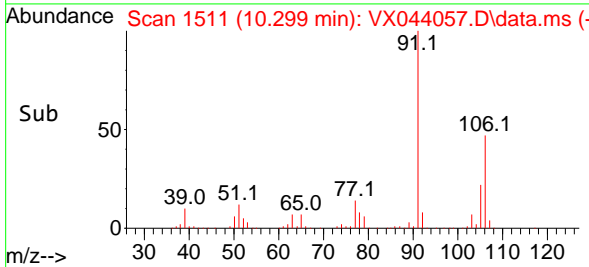
Tgt Ion: 91 Resp: 201719
 Ion Ratio Lower Upper
 91 100
 106 29.9 23.6 35.4

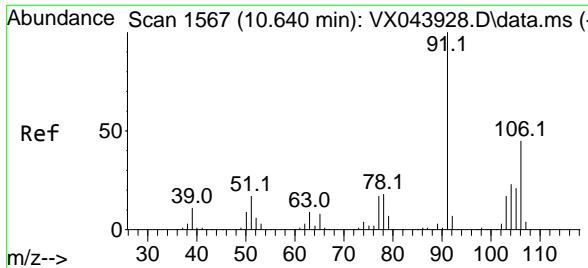


#68
 m/p-Xylenes
 Concen: 38.274 ug/l
 RT: 10.299 min Scan# 1511
 Delta R.T. -0.000 min
 Lab File: VX044057.D
 Acq: 02 Dec 2024 11:49



Tgt Ion: 106 Resp: 105899
 Ion Ratio Lower Upper
 106 100
 91 212.1 168.1 252.1

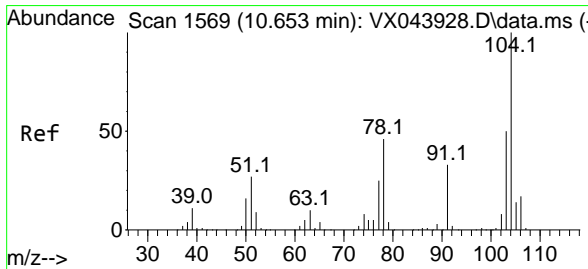
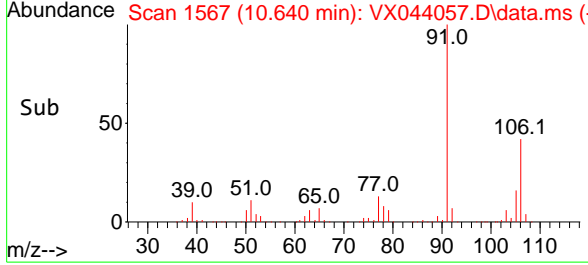
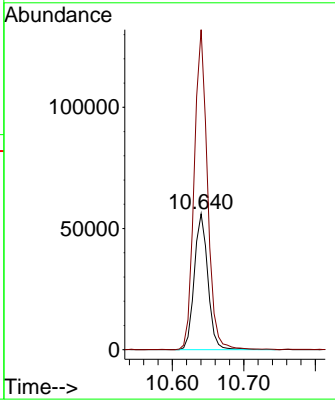
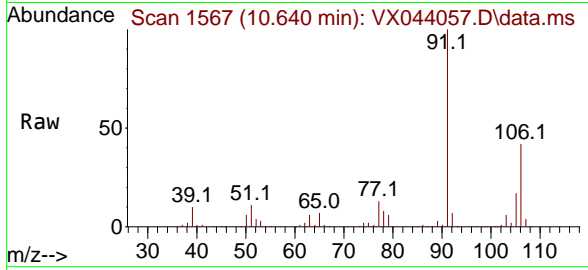




#69
 o-Xylene
 Concen: 27.344 ug/l
 RT: 10.640 min Scan# 1567
 Delta R.T. -0.000 min
 Lab File: VX044057.D
 Acq: 02 Dec 2024 11:49

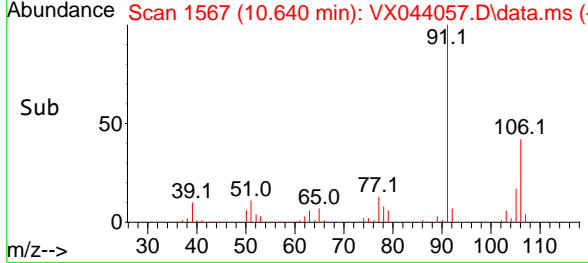
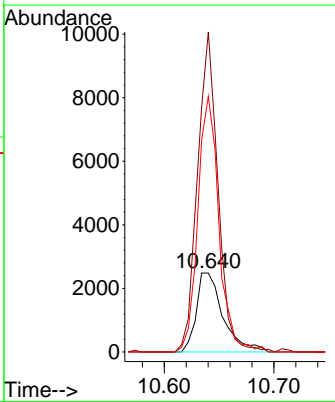
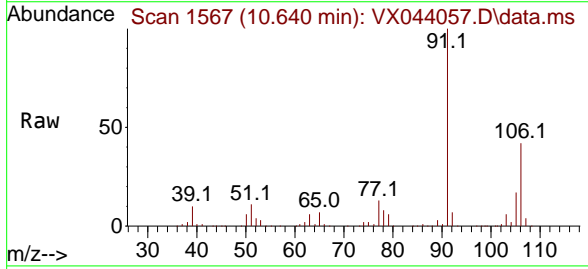
Instrument : MSVOA_X
 ClientSampleId :

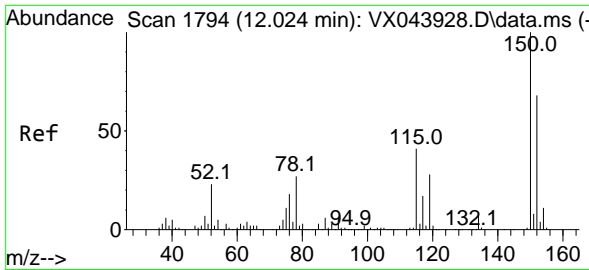
Tgt Ion:106 Resp: 73869
 Ion Ratio Lower Upper
 106 100
 91 230.1 110.2 330.6



#70
 Styrene
 Concen: 0.944 ug/l
 RT: 10.640 min Scan# 1567
 Delta R.T. -0.012 min
 Lab File: VX044057.D
 Acq: 02 Dec 2024 11:49

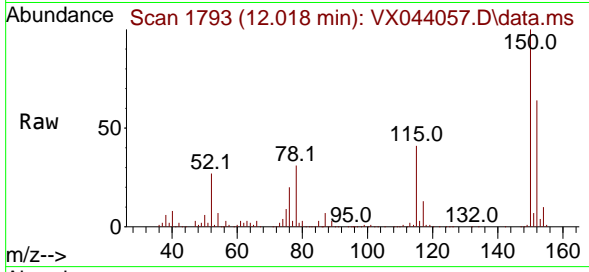
Tgt Ion:104 Resp: 4216
 Ion Ratio Lower Upper
 104 100
 78 309.9 42.2 63.2#
 103 255.7 44.7 67.1#



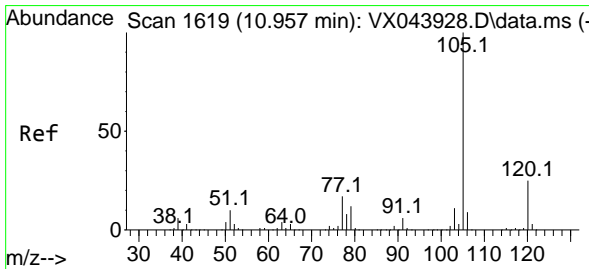
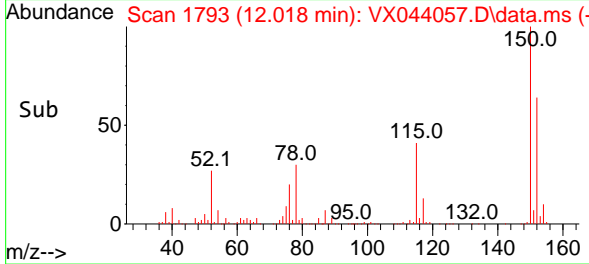
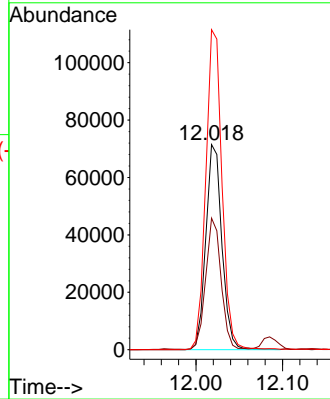


#72
 1,4-Dichlorobenzene-d4
 Concen: 50.000 ug/l
 RT: 12.018 min Scan# 11
 Delta R.T. -0.006 min
 Lab File: VX044057.D
 Acq: 02 Dec 2024 11:49

Instrument :
 MSVOA_X
 ClientSampleId :

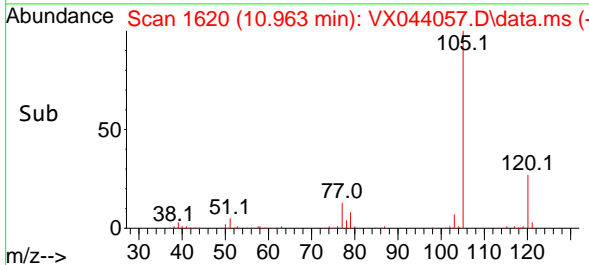
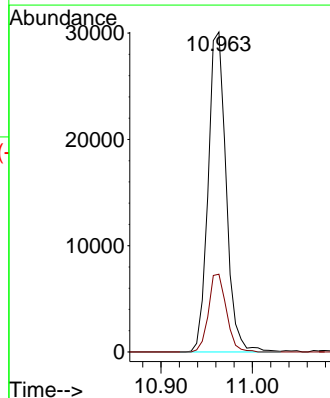
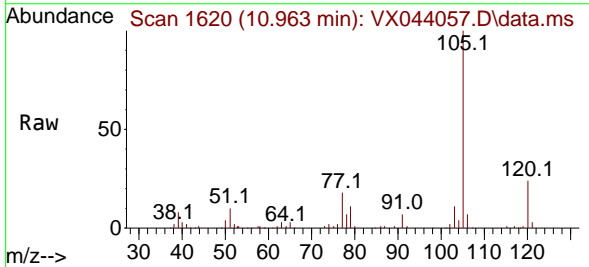


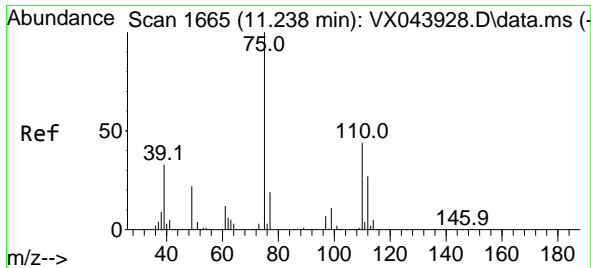
Tgt Ion:152 Resp: 92150
 Ion Ratio Lower Upper
 152 100
 115 61.4 45.4 136.2
 150 157.4 0.0 353.0



#73
 Isopropylbenzene
 Concen: 5.809 ug/l
 RT: 10.963 min Scan# 1620
 Delta R.T. 0.006 min
 Lab File: VX044057.D
 Acq: 02 Dec 2024 11:49

Tgt Ion:105 Resp: 41146
 Ion Ratio Lower Upper
 105 100
 120 24.1 13.0 38.9

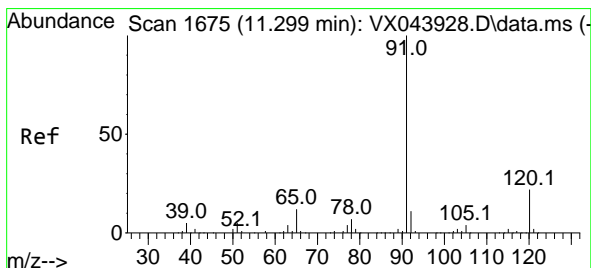
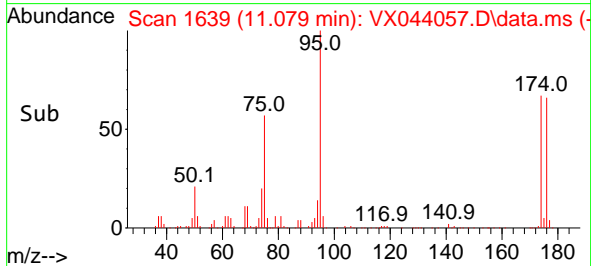
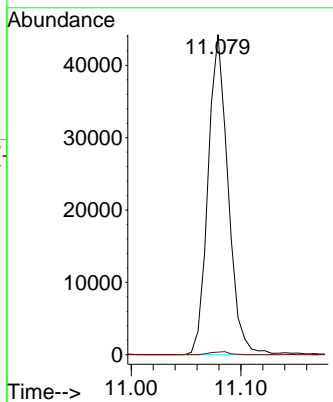
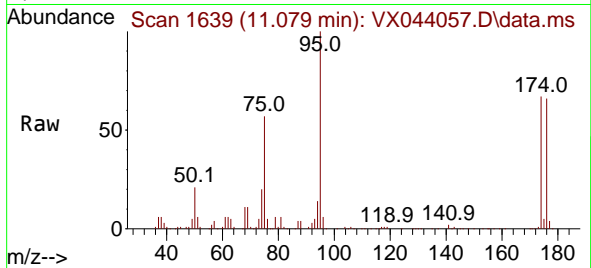




#76
 1,2,3-Trichloropropane
 Concen: 27.775 ug/l
 RT: 11.079 min Scan# 1665
 Delta R.T. -0.159 min
 Lab File: VX044057.D
 Acq: 02 Dec 2024 11:49

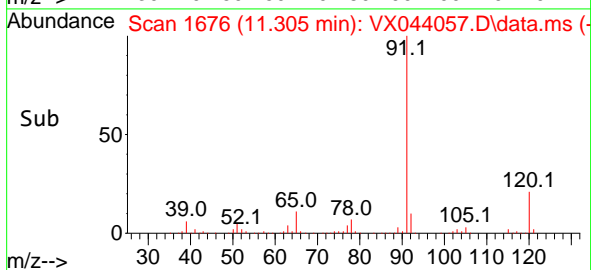
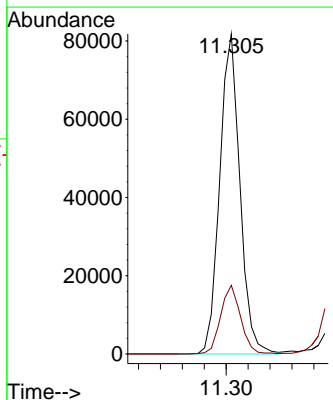
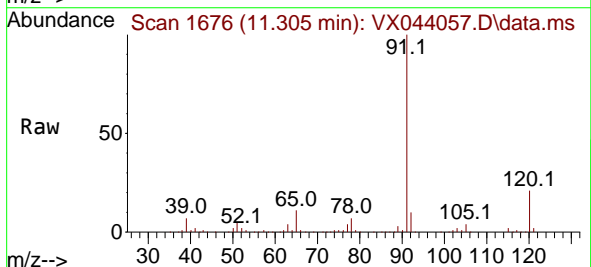
Instrument : MSVOA_X
 ClientSampleId :

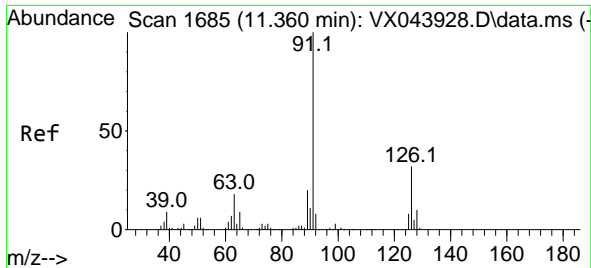
Tgt Ion: 75 Resp: 56128
 Ion Ratio Lower Upper
 75 100
 77 0.9 21.8 65.3#



#78
 n-propylbenzene
 Concen: 13.246 ug/l
 RT: 11.305 min Scan# 1676
 Delta R.T. 0.006 min
 Lab File: VX044057.D
 Acq: 02 Dec 2024 11:49

Tgt Ion: 91 Resp: 104791
 Ion Ratio Lower Upper
 91 100
 120 21.3 11.5 34.4

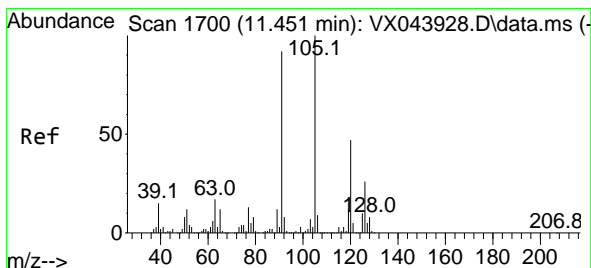
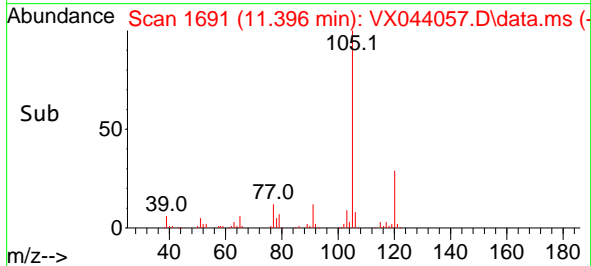
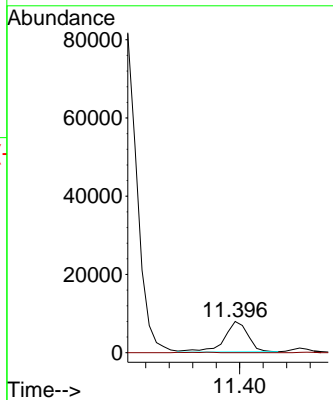
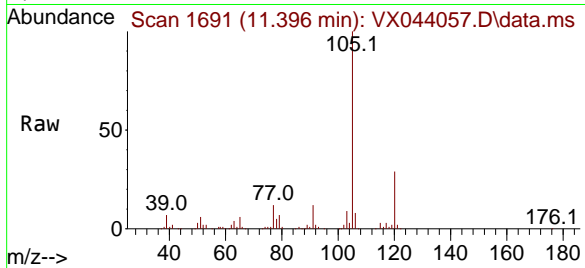




#79
 2-Chlorotoluene
 Concen: 2.177 ug/l
 RT: 11.396 min Scan# 1691
 Delta R.T. 0.036 min
 Lab File: VX044057.D
 Acq: 02 Dec 2024 11:49

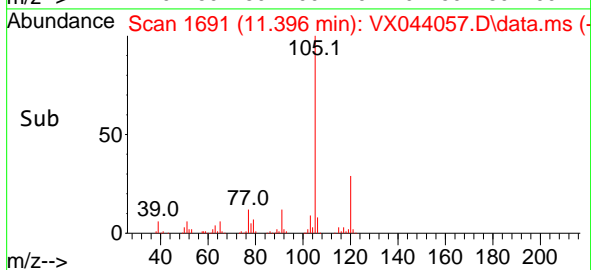
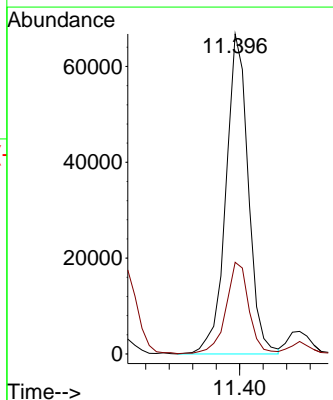
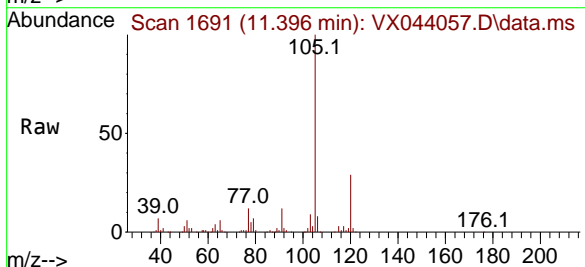
Instrument : MSVOA_X
 ClientSampleId :

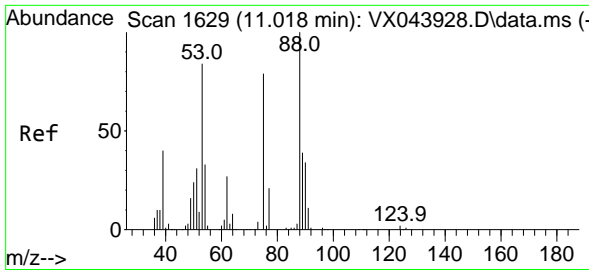
Tgt Ion: 91 Resp: 10892
 Ion Ratio Lower Upper
 91 100
 126 0.0 16.6 49.8#



#80
 1,3,5-Trimethylbenzene
 Concen: 15.176 ug/l
 RT: 11.396 min Scan# 1691
 Delta R.T. -0.055 min
 Lab File: VX044057.D
 Acq: 02 Dec 2024 11:49

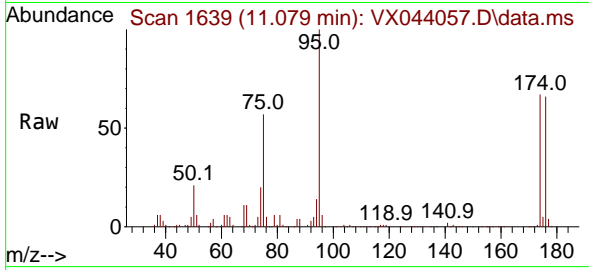
Tgt Ion: 105 Resp: 88441
 Ion Ratio Lower Upper
 105 100
 120 29.0 23.3 69.8



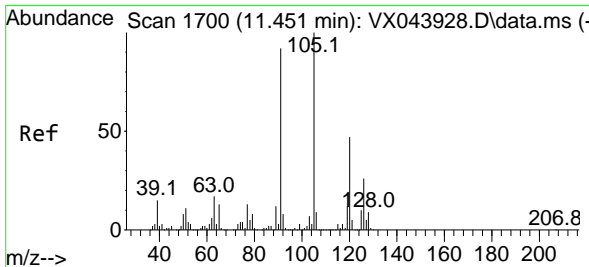
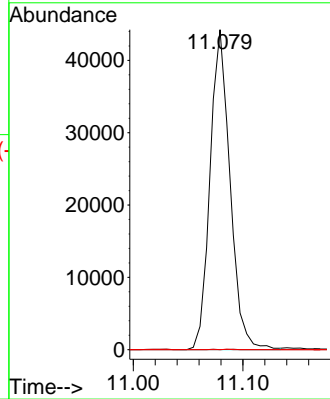
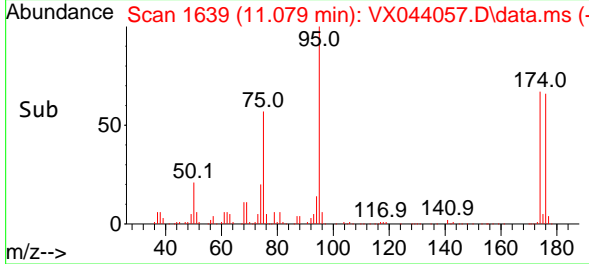


#81
 trans-1,4-Dichloro-2-butene
 Concen: 75.790 ug/l
 RT: 11.079 min Scan# 1639
 Delta R.T. 0.061 min
 Lab File: VX044057.D
 Acq: 02 Dec 2024 11:49

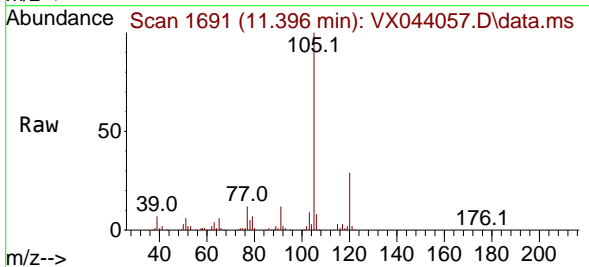
Instrument :
 MSVOA_X
 ClientSampleId :



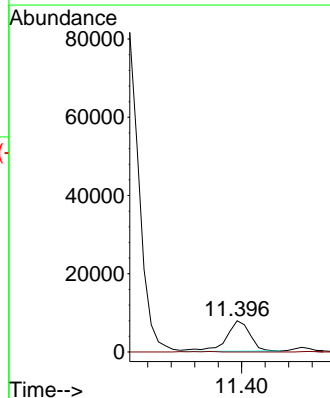
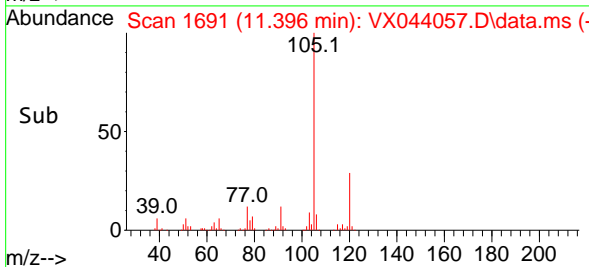
Tgt Ion: 75 Resp: 56128
 Ion Ratio Lower Upper
 75 100
 53 0.0 86.7 130.1#
 89 0.0 38.2 57.2#

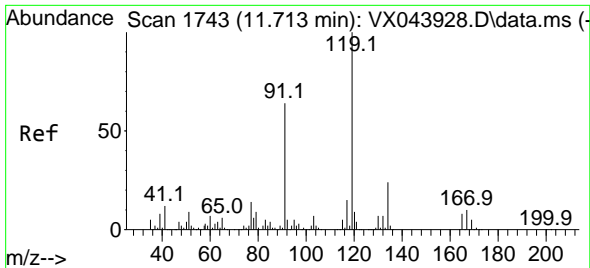


#82
 4-Chlorotoluene
 Concen: 1.929 ug/l
 RT: 11.396 min Scan# 1691
 Delta R.T. -0.055 min
 Lab File: VX044057.D
 Acq: 02 Dec 2024 11:49



Tgt Ion: 91 Resp: 10892
 Ion Ratio Lower Upper
 91 100
 126 0.0 14.3 42.9#



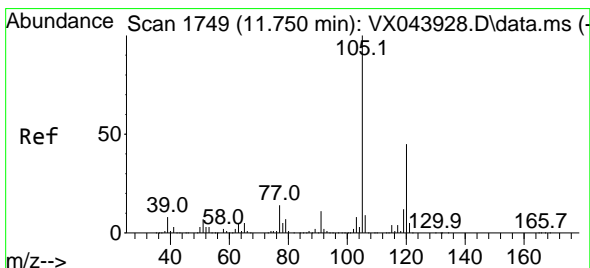
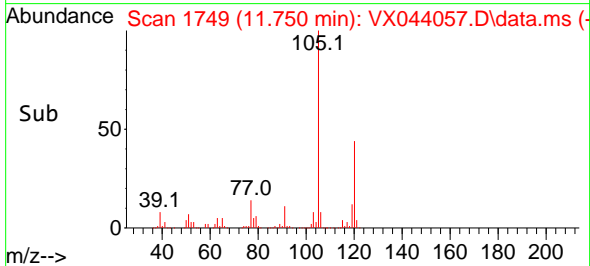
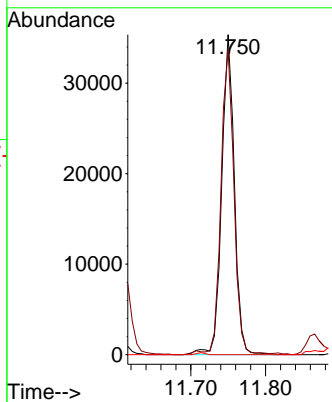
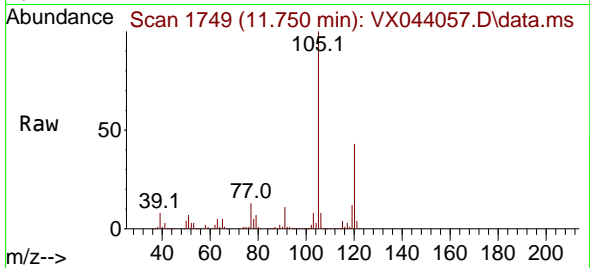


#83
 tert-Butylbenzene
 Concen: 7.212 ug/l
 RT: 11.750 min Scan# 1749
 Delta R.T. 0.036 min
 Lab File: VX044057.D
 Acq: 02 Dec 2024 11:49

Instrument : MSVOA_X
 ClientSampleId :

Tgt Ion:119 Resp: 41656

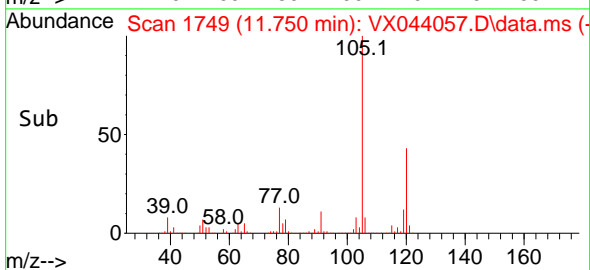
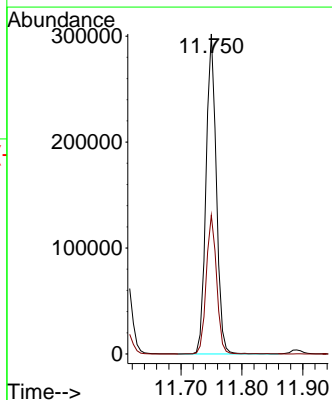
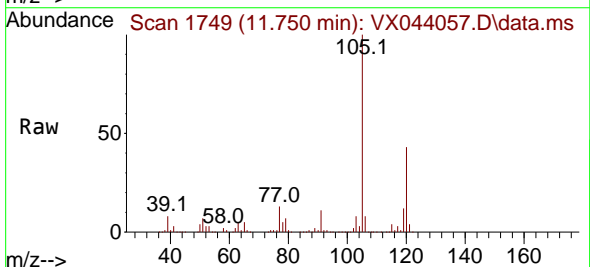
Ion	Ratio	Lower	Upper
119	100		
91	98.5	31.0	93.0#
134	0.0	11.6	34.8#

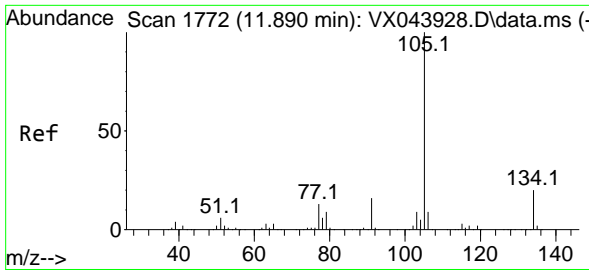


#84
 1,2,4-Trimethylbenzene
 Concen: 61.244 ug/l
 RT: 11.750 min Scan# 1749
 Delta R.T. -0.000 min
 Lab File: VX044057.D
 Acq: 02 Dec 2024 11:49

Tgt Ion:105 Resp: 355336

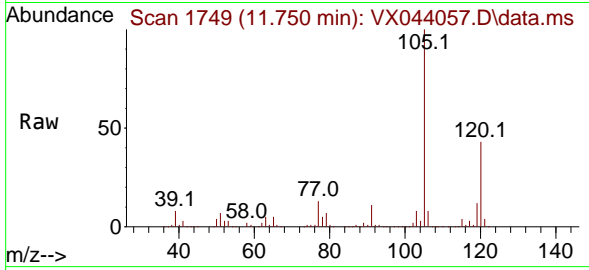
Ion	Ratio	Lower	Upper
105	100		
120	43.6	21.9	65.7



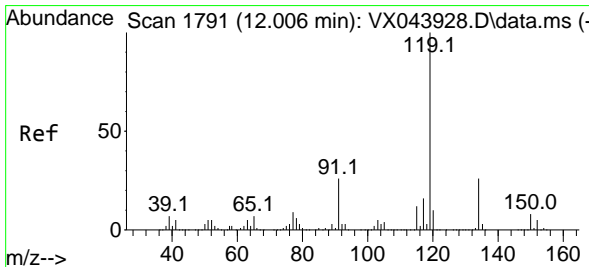
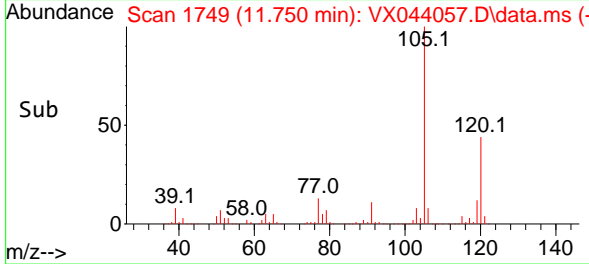
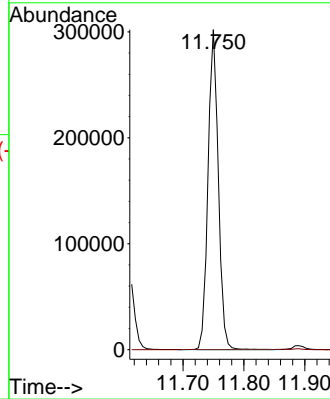


#85
 sec-Butylbenzene
 Concen: 50.209 ug/l
 RT: 11.750 min Scan# 1749
 Delta R.T. -0.140 min
 Lab File: VX044057.D
 Acq: 02 Dec 2024 11:49

Instrument :
 MSVOA_X
 ClientSampleId :

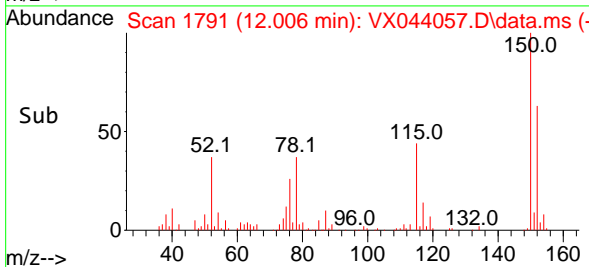
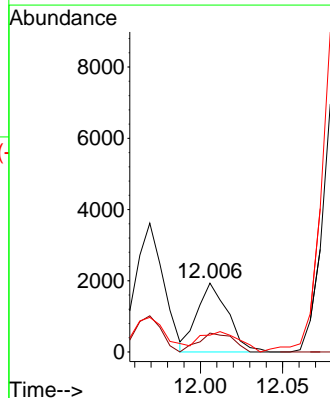
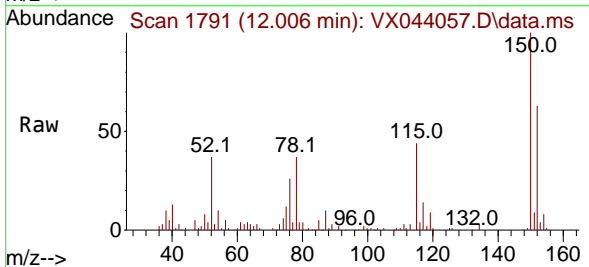


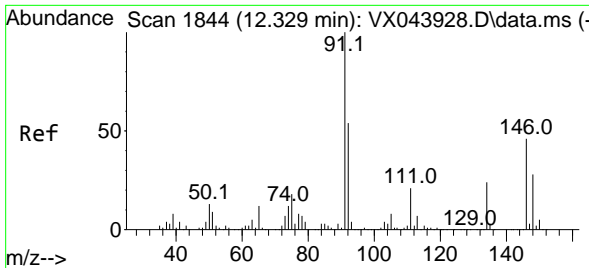
Tgt Ion:105 Resp: 355336
 Ion Ratio Lower Upper
 105 100
 134 0.0 9.7 29.1#



#86
 p-Isopropyltoluene
 Concen: 0.437 ug/l
 RT: 12.006 min Scan# 1791
 Delta R.T. -0.000 min
 Lab File: VX044057.D
 Acq: 02 Dec 2024 11:49

Tgt Ion:119 Resp: 2515
 Ion Ratio Lower Upper
 119 100
 134 30.9 13.0 38.9
 91 0.0 13.0 38.9#



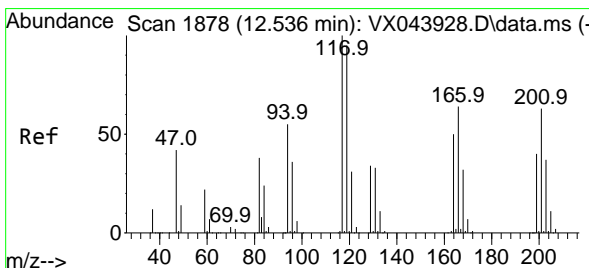
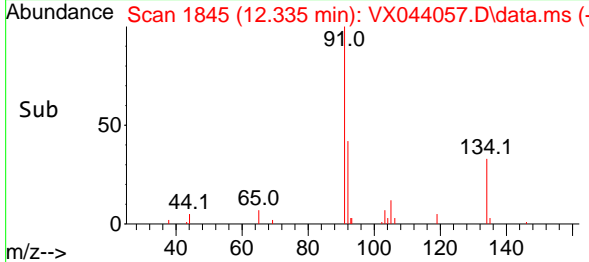
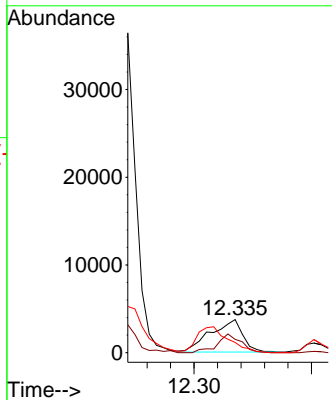
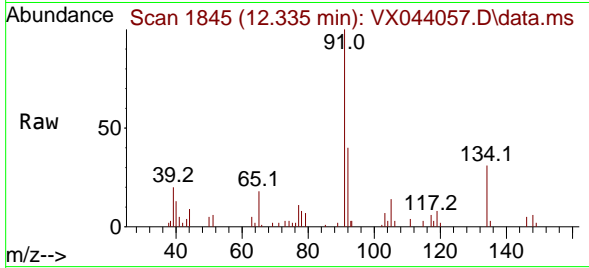


#89
 n-Butylbenzene
 Concen: 1.389 ug/l
 RT: 12.335 min Scan# 1845
 Delta R.T. 0.006 min
 Lab File: VX044057.D
 Acq: 02 Dec 2024 11:49

Instrument : MSVOA_X
 ClientSampleId :

Tgt Ion: 91 Resp: 7040

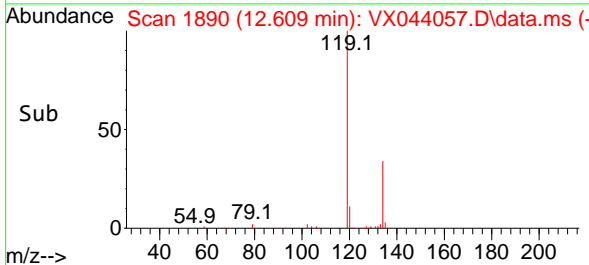
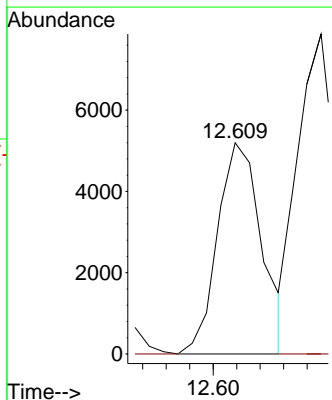
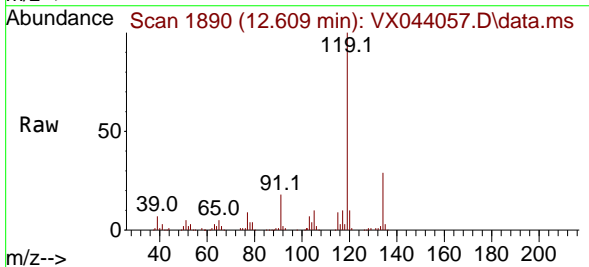
Ion	Ratio	Lower	Upper
91	100		
92	42.2	26.6	79.8
134	78.8	12.4	37.2#

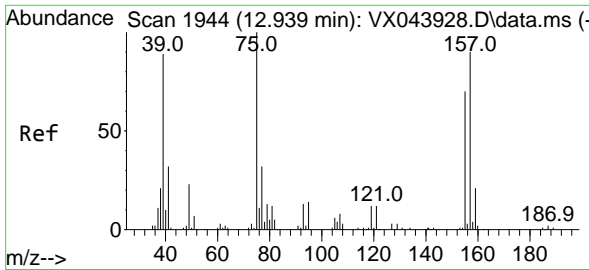


#90
 Hexachloroethane
 Concen: 6.959 ug/l
 RT: 12.609 min Scan# 1890
 Delta R.T. 0.073 min
 Lab File: VX044057.D
 Acq: 02 Dec 2024 11:49

Tgt Ion: 117 Resp: 6803

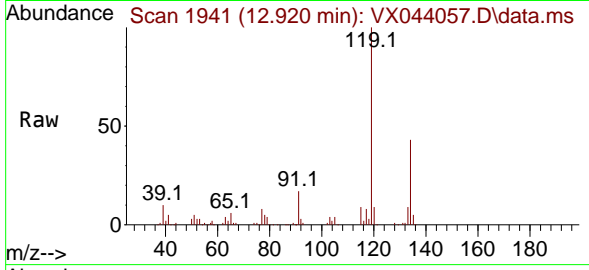
Ion	Ratio	Lower	Upper
117	100		
201	0.0	32.4	97.0#



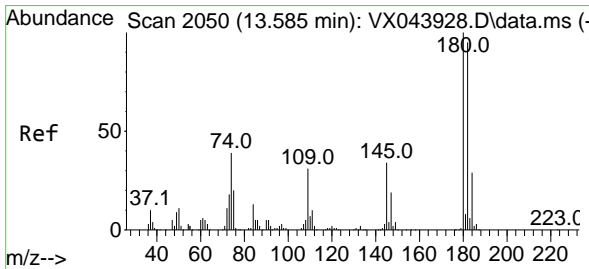
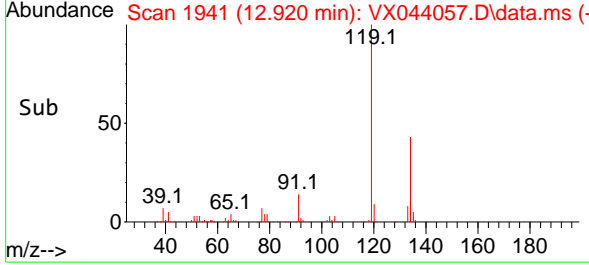
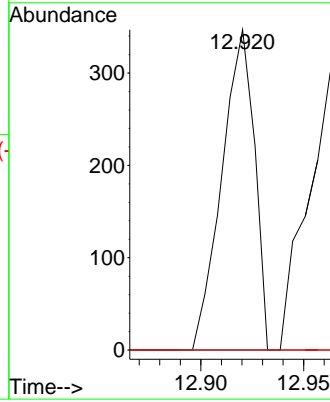


#92
 1,2-Dibromo-3-Chloropropane
 Concen: 0.790 ug/l
 RT: 12.920 min Scan# 1941
 Delta R.T. -0.019 min
 Lab File: VX044057.D
 Acq: 02 Dec 2024 11:49

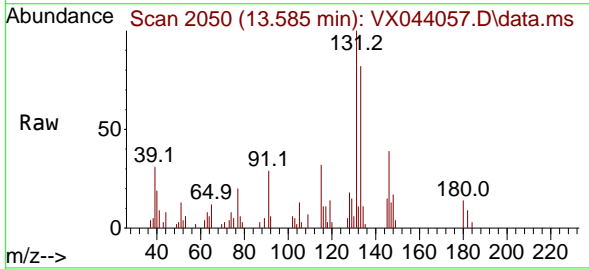
Instrument : MSVOA_X
 ClientSampleId :



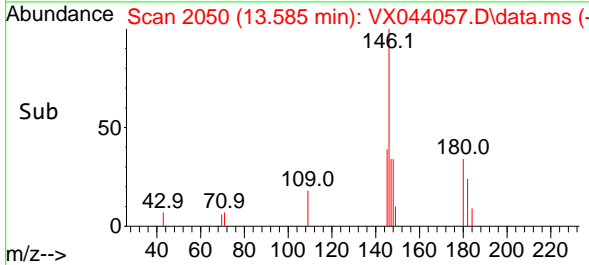
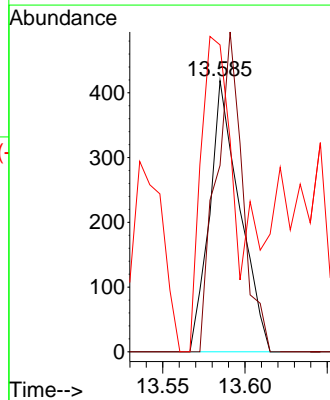
Tgt Ion: 75 Resp: 384
 Ion Ratio Lower Upper
 75 100
 155 0.0 40.1 120.2#
 157 0.0 49.6 149.0#

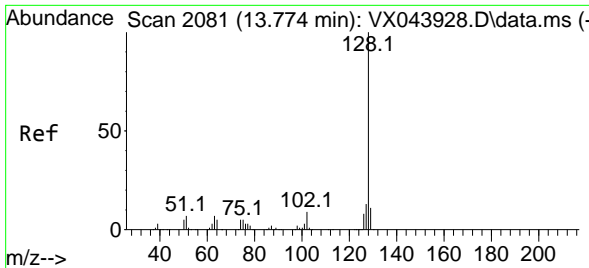


#93
 1,2,4-Trichlorobenzene
 Concen: 0.292 ug/l
 RT: 13.585 min Scan# 2050
 Delta R.T. -0.000 min
 Lab File: VX044057.D
 Acq: 02 Dec 2024 11:49



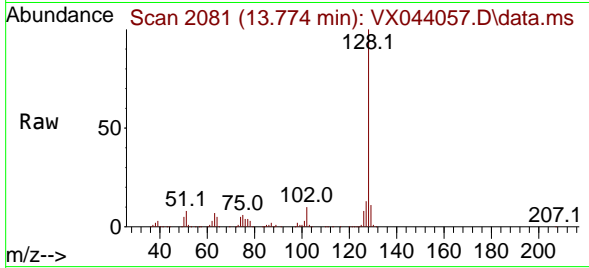
Tgt Ion: 180 Resp: 534
 Ion Ratio Lower Upper
 180 100
 182 102.8 48.0 144.2
 145 142.3 16.8 50.4#





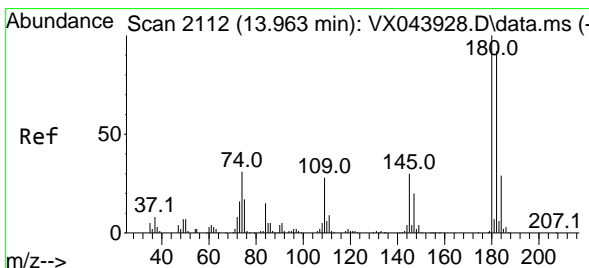
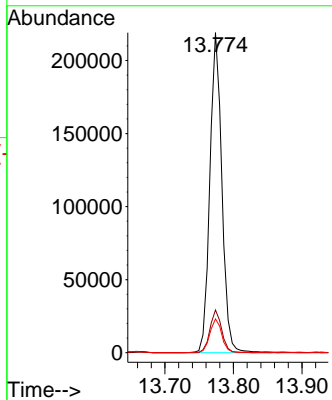
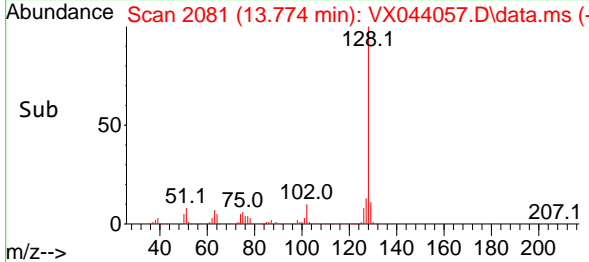
#95
 Naphthalene
 Concen: 40.430 ug/l
 RT: 13.774 min Scan# 2081
 Delta R.T. -0.000 min
 Lab File: VX044057.D
 Acq: 02 Dec 2024 11:49

Instrument : MSVOA_X
 ClientSampleId :

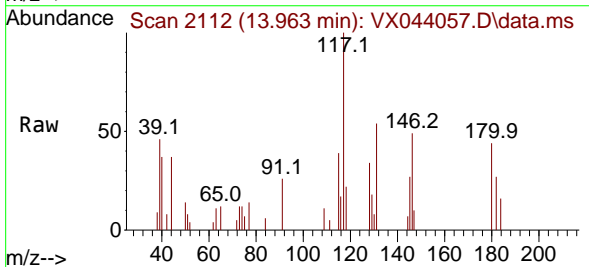


Tgt Ion:128 Resp: 266488

Ion	Ratio	Lower	Upper
128	100		
127	13.1	10.2	15.2
129	10.7	8.6	12.8



#96
 1,2,3-Trichlorobenzene
 Concen: 0.291 ug/l
 RT: 13.963 min Scan# 2112
 Delta R.T. -0.000 min
 Lab File: VX044057.D
 Acq: 02 Dec 2024 11:49



Tgt Ion:180 Resp: 540

Ion	Ratio	Lower	Upper
180	100		
182	86.7	45.6	136.8
145	99.8	16.4	49.4#

