

Data Path : Z:\voasrv\HPCHEM1\MSVOA\_X\Data\VX120321\  
 Data File : VX025475.D  
 Acq On : 03 Dec 2021 12:25  
 Operator : JC/MD  
 Sample : M4917-19DL 4X  
 Misc : 5.0mL/MSVOA\_X/WATER  
 ALS Vial : 7 Sample Multiplier: 1

Instrument :  
 MSVOA\_X  
 ClientSampleId :  
 MW-35DL

Quant Time: Dec 04 06:48:03 2021  
 Quant Method : Z:\voasrv\HPCHEM1\MSVOA\_X\Method\82X111721W.M  
 Quant Title : SW846 8260  
 QLast Update : Wed Nov 17 15:36:16 2021  
 Response via : Initial Calibration

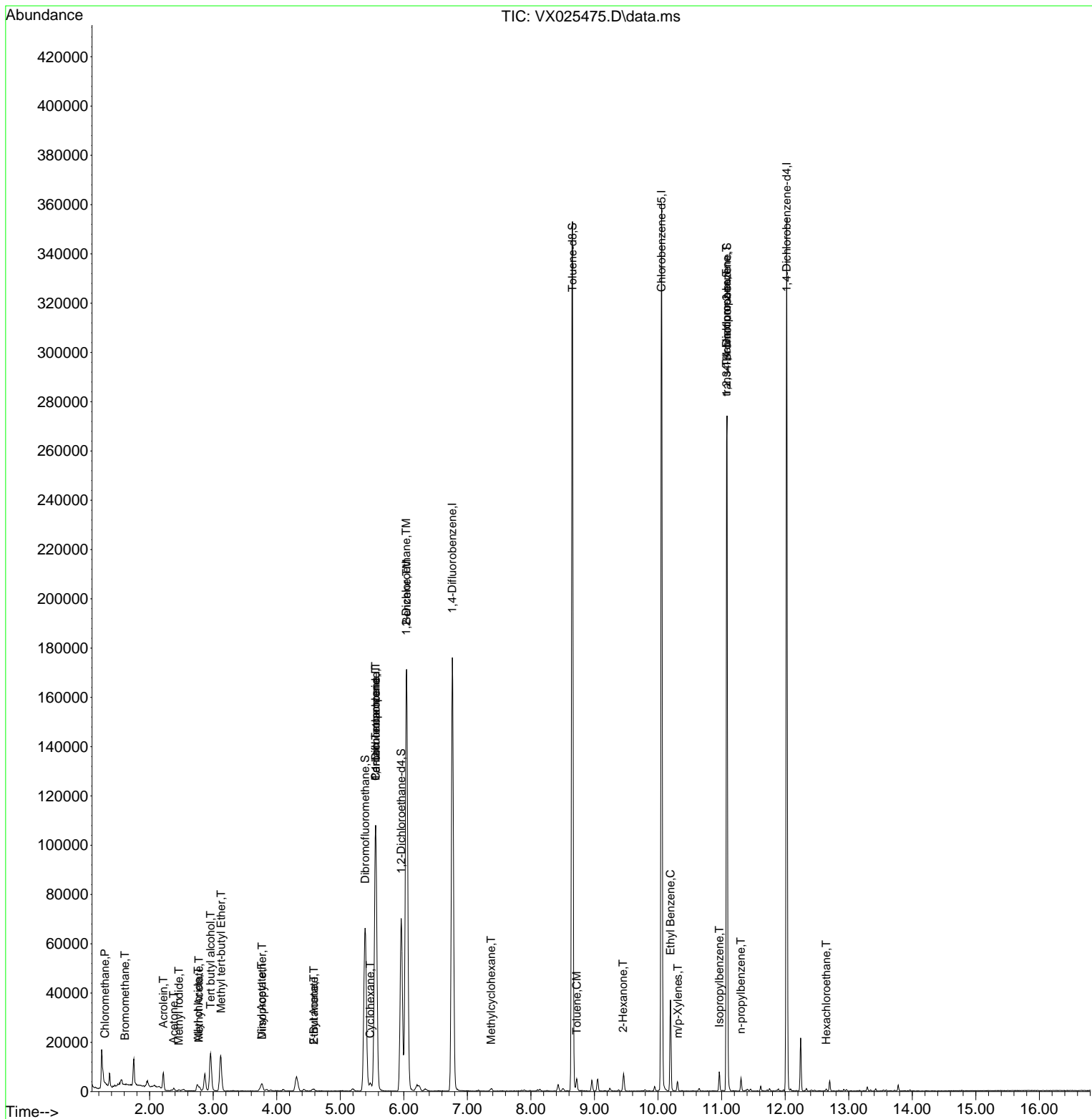
Compound	R.T.	QIon	Response	Conc	Units	Dev(Min)
-----						
Internal Standards						
1) Pentafluorobenzene	5.556	168	110168	50.000	ug/l	0.00
34) 1,4-Difluorobenzene	6.763	114	186532	50.000	ug/l	0.00
63) Chlorobenzene-d5	10.055	117	166701	50.000	ug/l	0.00
72) 1,4-Dichlorobenzene-d4	12.024	152	75189	50.000	ug/l	0.00
System Monitoring Compounds						
33) 1,2-Dichloroethane-d4	5.958	65	64632	55.658	ug/l	0.00
Spiked Amount	50.000	Range 78 - 117	Recovery	=	111.320%	
35) Dibromofluoromethane	5.391	113	57705	50.419	ug/l	0.00
Spiked Amount	50.000	Range 75 - 124	Recovery	=	100.840%	
50) Toluene-d8	8.653	98	214711	49.896	ug/l	0.00
Spiked Amount	50.000	Range 92 - 112	Recovery	=	99.800%	
62) 4-Bromofluorobenzene	11.085	95	74671	45.869	ug/l	0.00
Spiked Amount	50.000	Range 83 - 123	Recovery	=	91.740%	
Target Compounds						
						Qvalue
3) Chloromethane	1.294	50	243	0.206	ug/l #	42
5) Bromomethane	1.611	94	199	0.357	ug/l	96
10) Methyl Iodide	2.459	142	509	0.397	ug/l #	79
11) Tert butyl alcohol	2.959	59	17791	54.960	ug/l	98
13) Acrolein	2.215	56	170	3.196	ug/l #	1
14) Allyl chloride	2.763	41	626	0.339	ug/l #	37
16) Acetone	2.379	43	1192	1.847	ug/l	98
18) Methyl Acetate	2.776	43	893	0.433	ug/l #	52
19) Methyl tert-butyl Ether	3.123	73	15993	4.495	ug/l	98
22) Diisopropyl ether	3.769	45	3061	0.870	ug/l #	81
23) Vinyl Acetate	3.763	43	1591	0.563	ug/l #	72
25) 2-Butanone	4.586	43	378	0.405	ug/l #	48
31) Cyclohexane	5.470	56	2204	1.228	ug/l #	82
36) 1,1-Dichloropropene	5.556	75	7439	4.571	ug/l #	49
37) Ethyl Acetate	4.586	43	378	0.204	ug/l #	68
38) Carbon Tetrachloride	5.556	117	10328	5.762	ug/l #	16
39) Methylcyclohexane	7.372	83	445	0.213	ug/l #	91
40) Benzene	6.043	78	211465	42.894	ug/l	96
42) 1,2-Dichloroethane	6.037	62	1893	1.180	ug/l #	77
52) Toluene	8.720	92	1676	0.521	ug/l	99
59) 2-Hexanone	9.451	43	553	0.363	ug/l	80
67) Ethyl Benzene	10.195	91	21431	3.651	ug/l	100
68) m/p-Xylenes	10.311	106	977	0.407	ug/l	85
73) Isopropylbenzene	10.963	105	4199	0.784	ug/l	99
76) 1,2,3-Trichloropropane	11.079	75	36899	23.965	ug/l #	37
78) n-propylbenzene	11.305	91	3535	0.588	ug/l	95
81) trans-1,4-Dichloro-2-b...	11.079	75	36899	60.371	ug/l #	9
90) Hexachloroethane	12.646	117	408	0.463	ug/l #	11
95) Naphthalene	13.780	128	1819	Below Cal		96

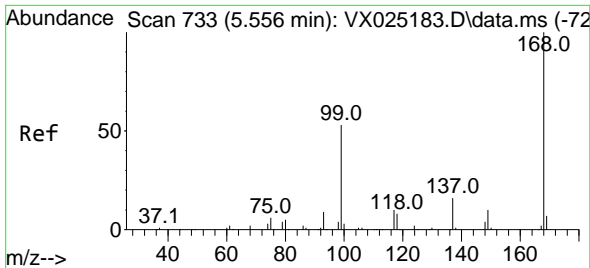
(#) = qualifier out of range (m) = manual integration (+) = signals summed

Data Path : Z:\voasrv\HPCHEM1\MSVOA\_X\Data\VX120321\  
 Data File : VX025475.D  
 Acq On : 03 Dec 2021 12:25  
 Operator : JC/MD  
 Sample : M4917-19DL 4X  
 Misc : 5.0mL/MSVOA\_X/WATER  
 ALS Vial : 7 Sample Multiplier: 1

Instrument :  
 MSVOA\_X  
 ClientSampleId :  
 MW-35DL

Quant Time: Dec 04 06:48:03 2021  
 Quant Method : Z:\voasrv\HPCHEM1\MSVOA\_X\Method\82X111721W.M  
 Quant Title : SW846 8260  
 QLast Update : Wed Nov 17 15:36:16 2021  
 Response via : Initial Calibration

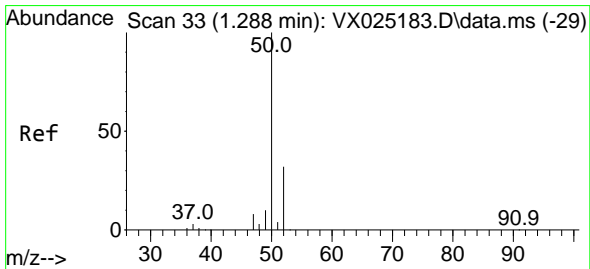
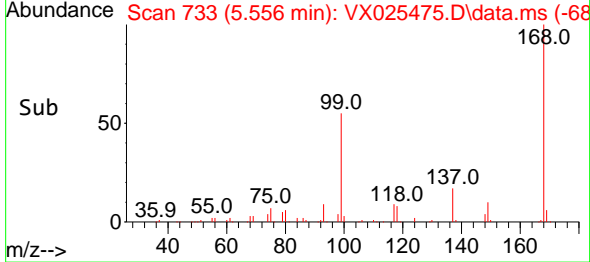
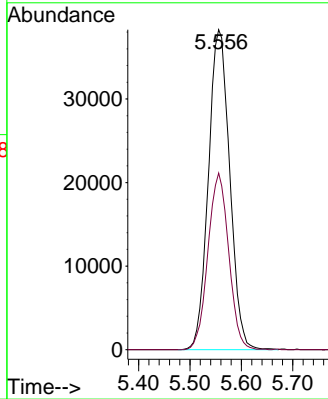
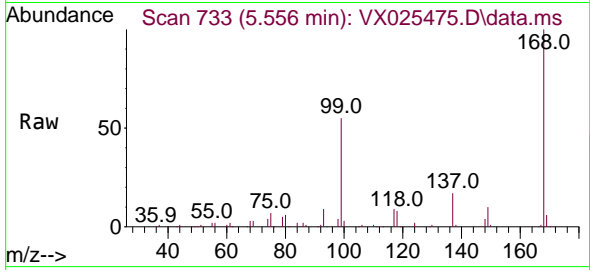




#1  
 Pentafluorobenzene  
 Concen: 50.000 ug/l  
 RT: 5.556 min Scan# 71  
 Delta R.T. -0.000 min  
 Lab File: VX025475.D  
 Acq: 03 Dec 2021 12:25

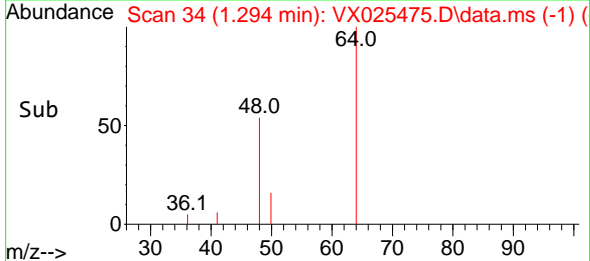
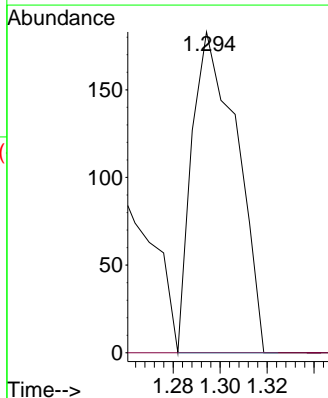
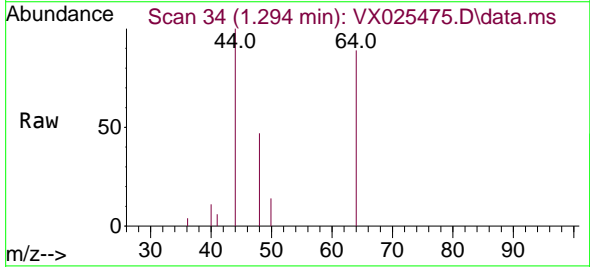
Instrument : MSVOA\_X  
 ClientSampleId : MW-35DL

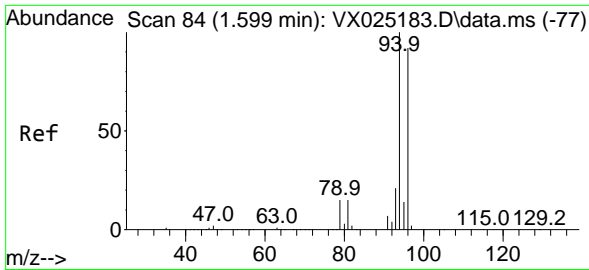
Tgt Ion:168 Resp: 110168  
 Ion Ratio Lower Upper  
 168 100  
 99 55.2 46.4 69.6



#3  
 Chloromethane  
 Concen: 0.206 ug/l  
 RT: 1.294 min Scan# 34  
 Delta R.T. 0.006 min  
 Lab File: VX025475.D  
 Acq: 03 Dec 2021 12:25

Tgt Ion: 50 Resp: 243  
 Ion Ratio Lower Upper  
 50 100  
 52 0.0 25.9 38.9#

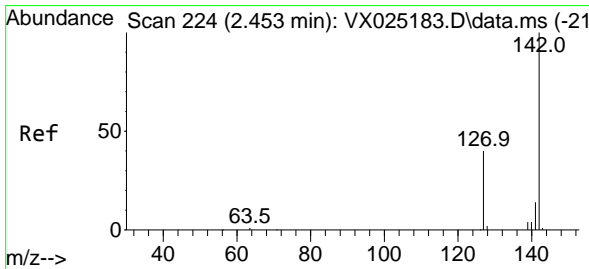
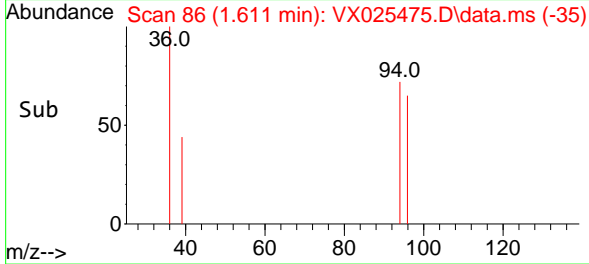
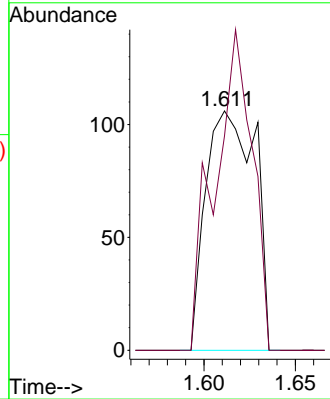
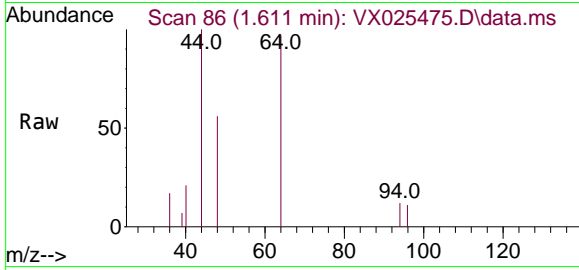




#5  
 Bromomethane  
 Concen: 0.357 ug/l  
 RT: 1.611 min Scan# 80  
 Delta R.T. 0.012 min  
 Lab File: VX025475.D  
 Acq: 03 Dec 2021 12:25

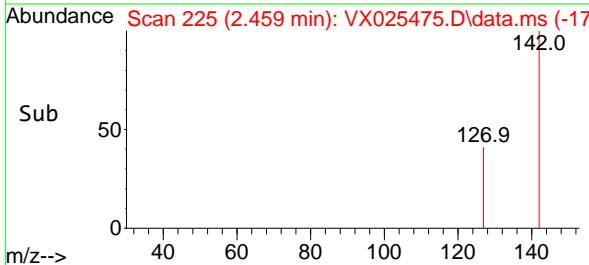
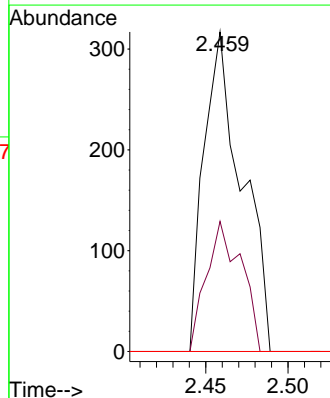
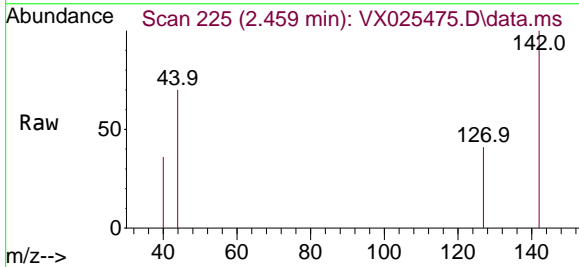
Instrument :  
 MSVOA\_X  
 ClientSampleId :  
 MW-35DL

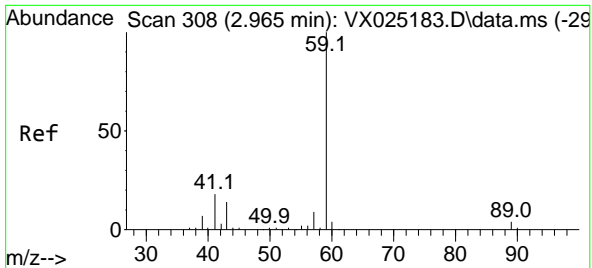
Tgt Ion: 94 Resp: 199  
 Ion Ratio Lower Upper  
 94 100  
 96 89.6 74.8 112.2



#10  
 Methyl Iodide  
 Concen: 0.397 ug/l  
 RT: 2.459 min Scan# 225  
 Delta R.T. 0.006 min  
 Lab File: VX025475.D  
 Acq: 03 Dec 2021 12:25

Tgt Ion: 142 Resp: 509  
 Ion Ratio Lower Upper  
 142 100  
 127 37.3 38.9 58.3#  
 141 0.0 11.7 17.5#

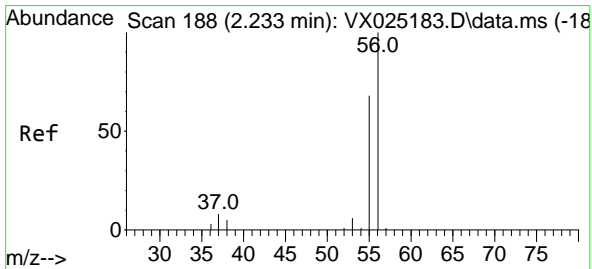
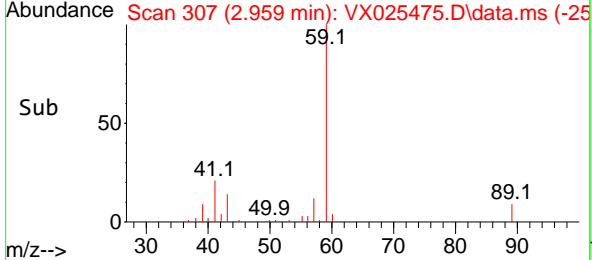
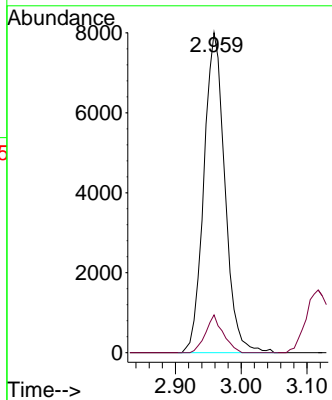
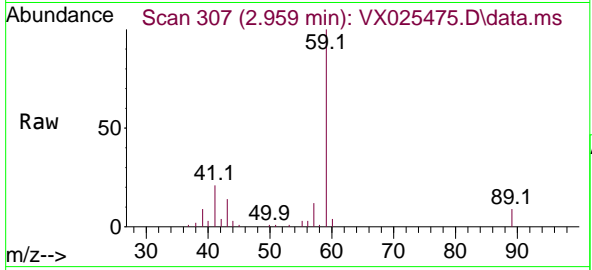




#11  
 Tert butyl alcohol  
 Concen: 54.960 ug/l  
 RT: 2.959 min Scan# 30  
 Delta R.T. -0.006 min  
 Lab File: VX025475.D  
 Acq: 03 Dec 2021 12:25

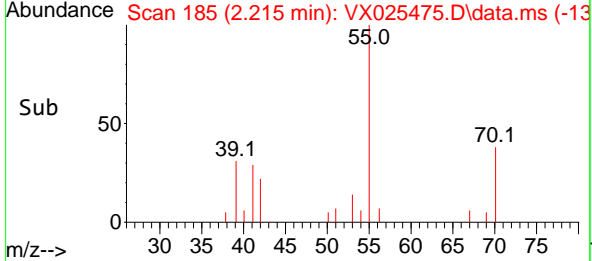
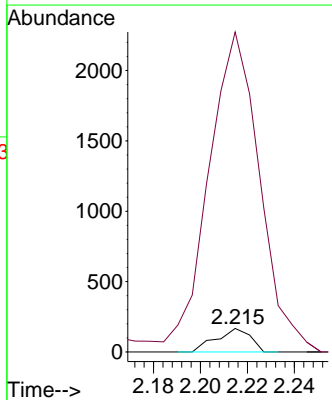
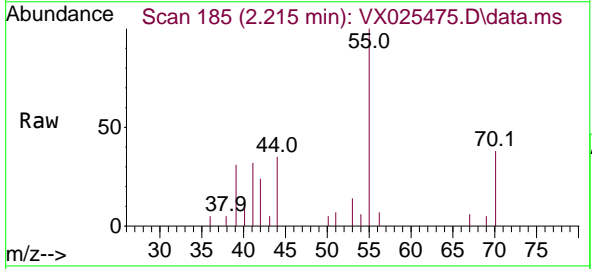
Instrument : MSVOA\_X  
 Client SampleId : MW-35DL

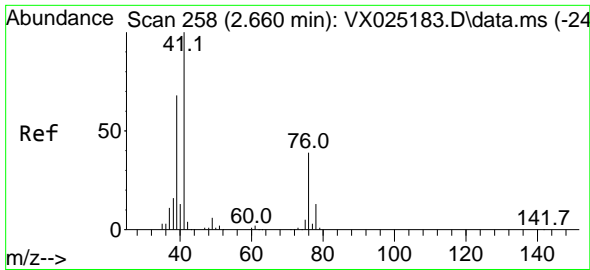
Tgt Ion: 59 Resp: 17791  
 Ion Ratio Lower Upper  
 59 100  
 57 9.8 8.5 12.7



#13  
 Acrolein  
 Concen: 3.196 ug/l  
 RT: 2.215 min Scan# 185  
 Delta R.T. -0.018 min  
 Lab File: VX025475.D  
 Acq: 03 Dec 2021 12:25

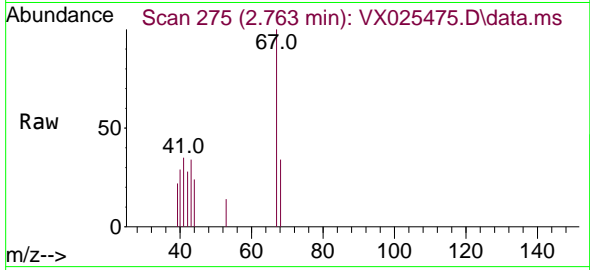
Tgt Ion: 56 Resp: 170  
 Ion Ratio Lower Upper  
 56 100  
 55 2031.2 58.6 87.8#



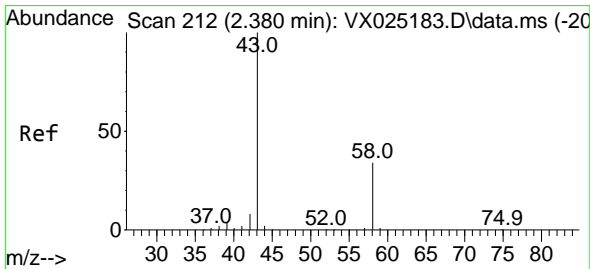
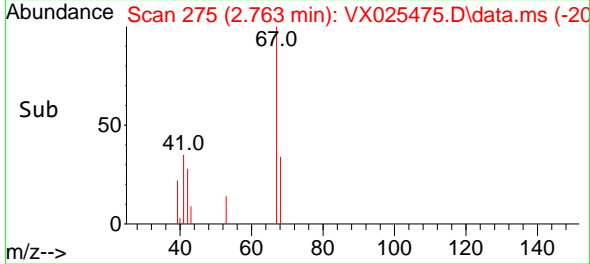
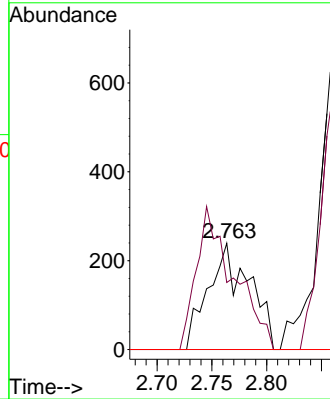


#14  
 Allyl chloride  
 Concen: 0.339 ug/l  
 RT: 2.763 min Scan# 212  
 Delta R.T. 0.103 min  
 Lab File: VX025475.D  
 Acq: 03 Dec 2021 12:25

Instrument :  
 MSVOA\_X  
 ClientSampleId :  
 MW-35DL

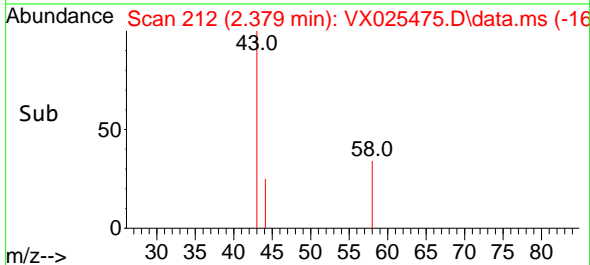
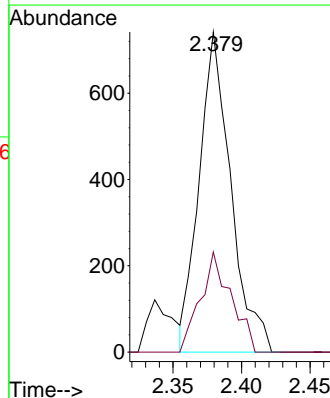
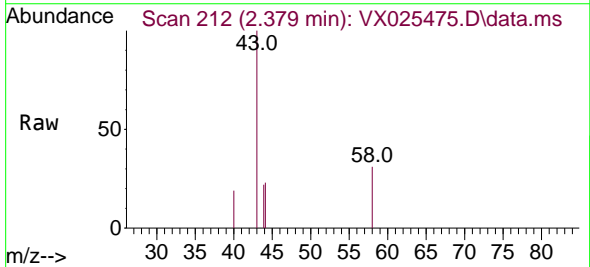


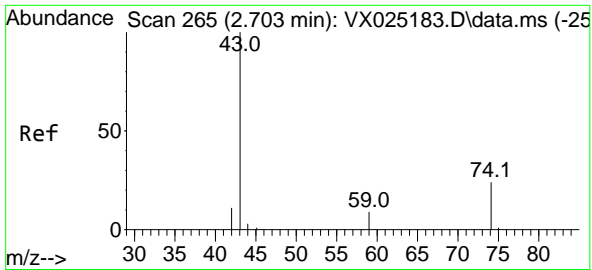
Tgt Ion: 41 Resp: 626  
 Ion Ratio Lower Upper  
 41 100  
 39 121.6 54.6 82.0#  
 76 0.0 25.3 37.9#



#16  
 Acetone  
 Concen: 1.847 ug/l  
 RT: 2.379 min Scan# 212  
 Delta R.T. -0.001 min  
 Lab File: VX025475.D  
 Acq: 03 Dec 2021 12:25

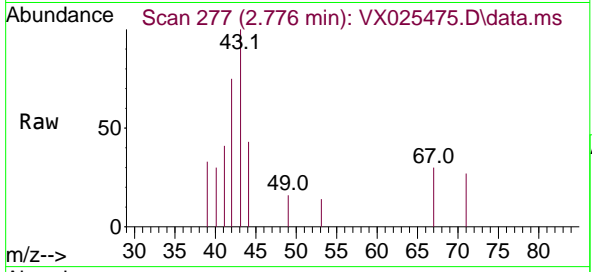
Tgt Ion: 43 Resp: 1192  
 Ion Ratio Lower Upper  
 43 100  
 58 31.3 24.0 36.0



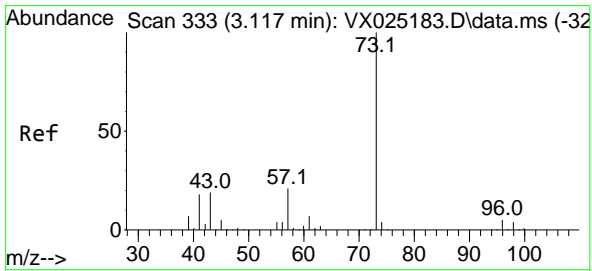
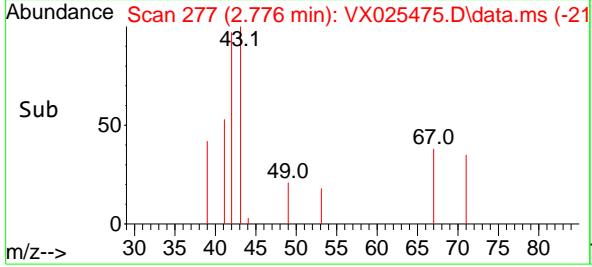
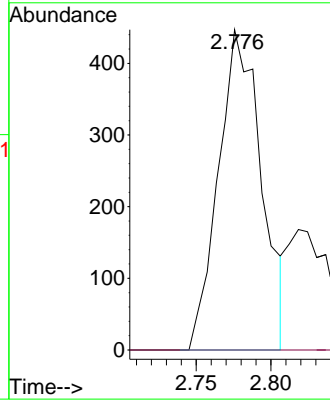


#18  
 Methyl Acetate  
 Concen: 0.433 ug/l  
 RT: 2.776 min Scan# 21  
 Delta R.T. 0.073 min  
 Lab File: VX025475.D  
 Acq: 03 Dec 2021 12:25

Instrument :  
 MSVOA\_X  
 ClientSampleId :  
 MW-35DL

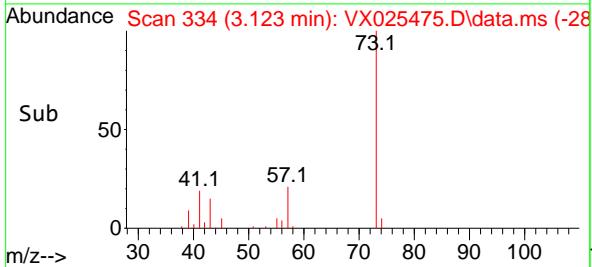
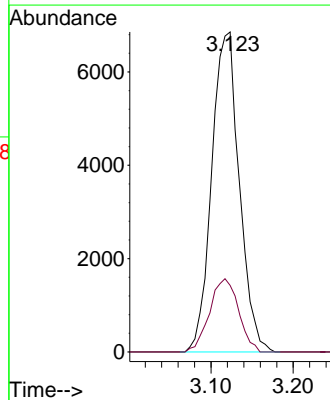
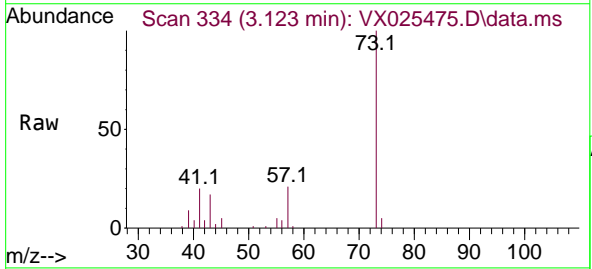


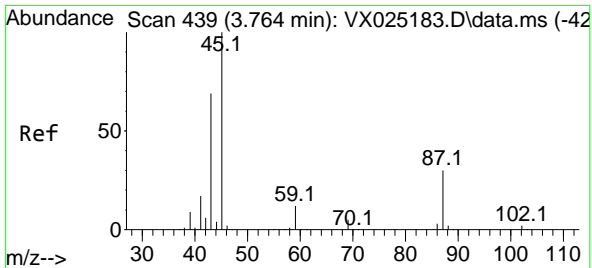
Tgt Ion: 43 Resp: 893  
 Ion Ratio Lower Upper  
 43 100  
 74 0.0 19.0 28.6#



#19  
 Methyl tert-butyl Ether  
 Concen: 4.495 ug/l  
 RT: 3.123 min Scan# 334  
 Delta R.T. 0.006 min  
 Lab File: VX025475.D  
 Acq: 03 Dec 2021 12:25

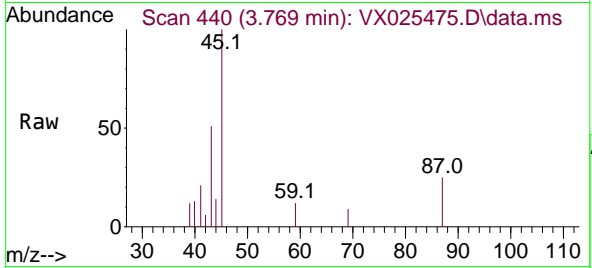
Tgt Ion: 73 Resp: 15993  
 Ion Ratio Lower Upper  
 73 100  
 57 20.8 17.5 26.3





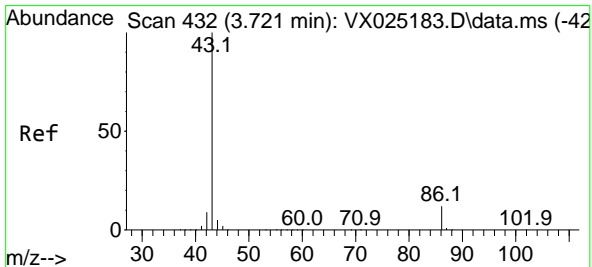
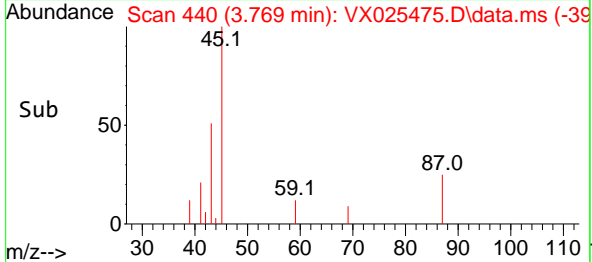
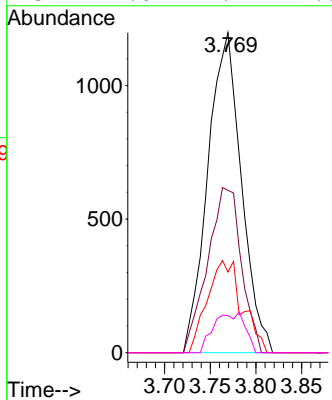
#22  
 Diisopropyl ether  
 Concen: 0.870 ug/l  
 RT: 3.769 min Scan# 440  
 Delta R.T. 0.005 min  
 Lab File: VX025475.D  
 Acq: 03 Dec 2021 12:25

Instrument :  
 MSVOA\_X  
 ClientSampleId :  
 MW-35DL



Tgt Ion: 45 Resp: 3061

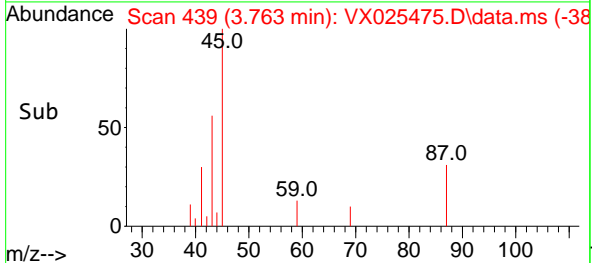
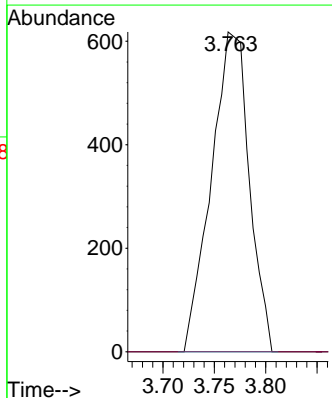
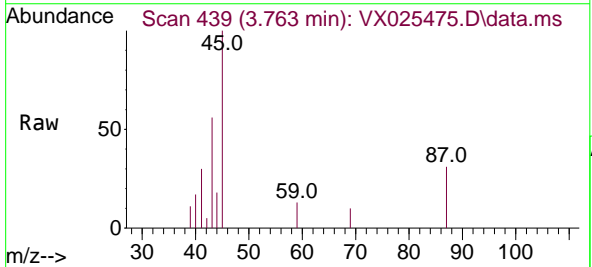
Ion	Ratio	Lower	Upper
45	100		
43	50.8	58.3	87.5#
87	25.2	23.7	35.5
59	11.6	9.4	14.0



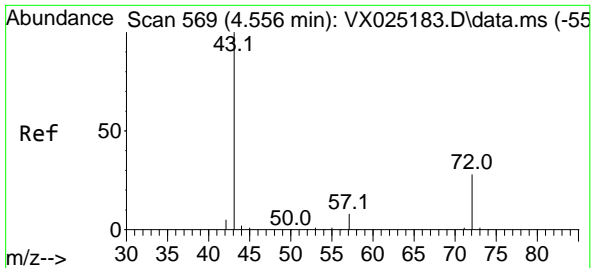
#23  
 Vinyl Acetate  
 Concen: 0.563 ug/l  
 RT: 3.763 min Scan# 439  
 Delta R.T. 0.042 min  
 Lab File: VX025475.D  
 Acq: 03 Dec 2021 12:25

Tgt Ion: 43 Resp: 1591

Ion	Ratio	Lower	Upper
43	100		
86	0.0	8.2	12.4#



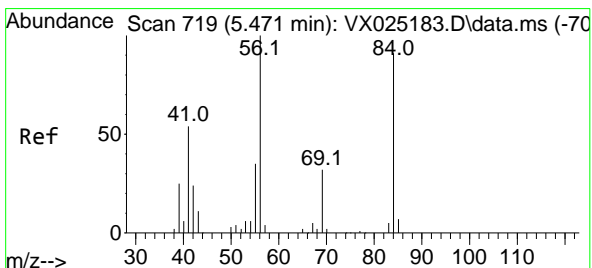
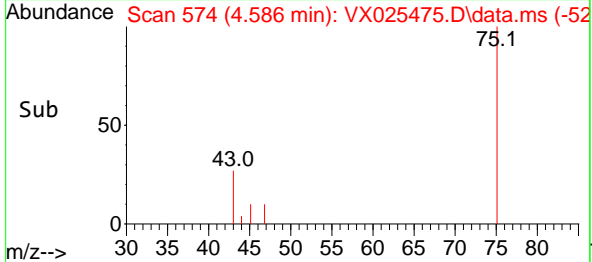
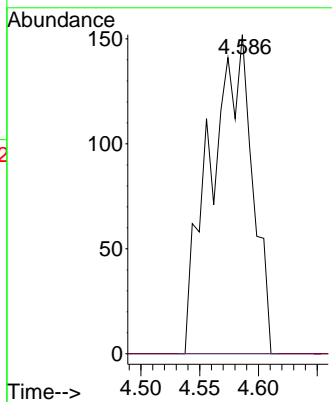
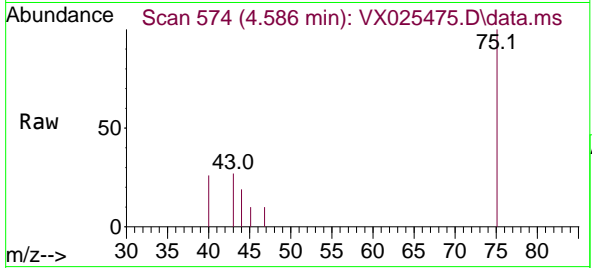




#25  
 2-Butanone  
 Concen: 0.405 ug/l  
 RT: 4.586 min Scan# 51  
 Delta R.T. 0.030 min  
 Lab File: VX025475.D  
 Acq: 03 Dec 2021 12:25

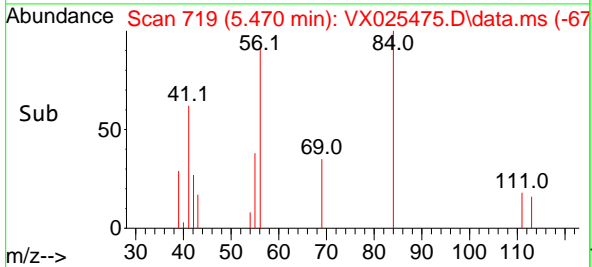
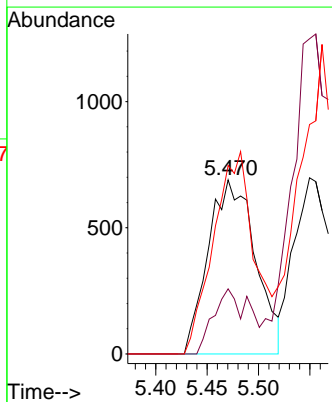
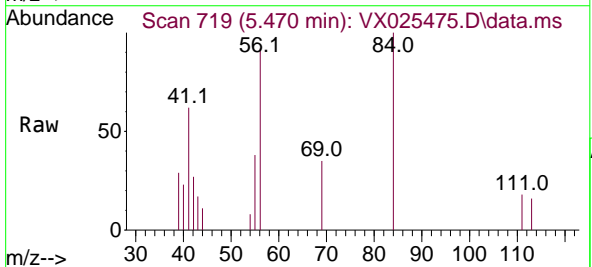
Instrument :  
 MSVOA\_X  
 ClientSampleId :  
 MW-35DL

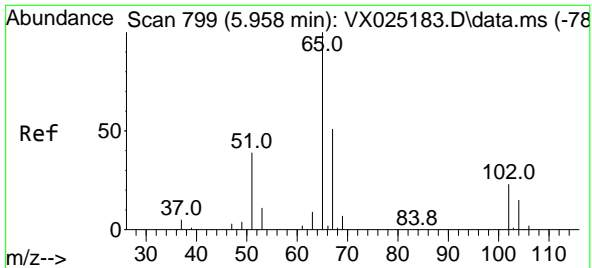
Tgt Ion: 43 Resp: 378  
 Ion Ratio Lower Upper  
 43 100  
 72 0.0 21.2 31.8#



#31  
 Cyclohexane  
 Concen: 1.228 ug/l  
 RT: 5.470 min Scan# 719  
 Delta R.T. -0.001 min  
 Lab File: VX025475.D  
 Acq: 03 Dec 2021 12:25

Tgt Ion: 56 Resp: 2204  
 Ion Ratio Lower Upper  
 56 100  
 69 37.4 24.2 36.2#  
 84 108.3 71.5 107.3#

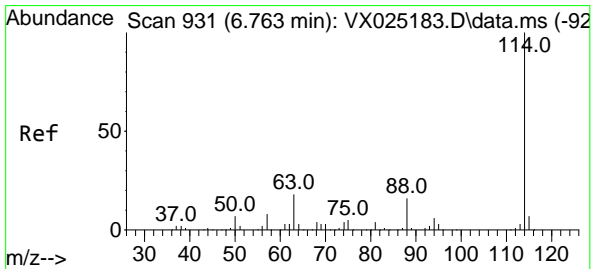
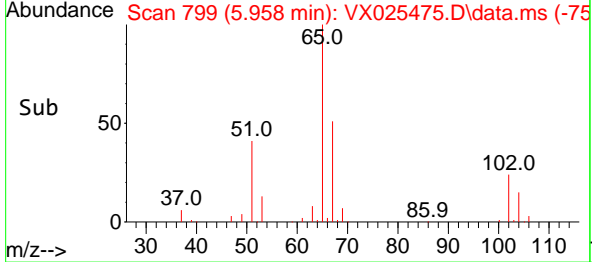
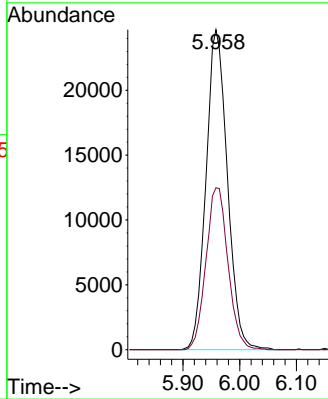
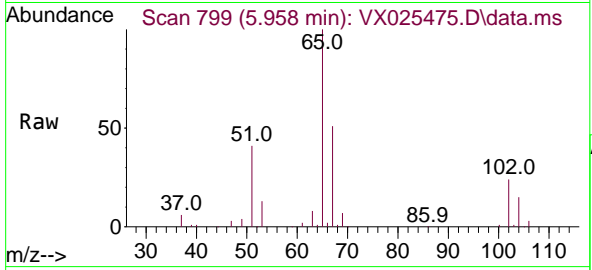




#33  
 1,2-Dichloroethane-d4  
 Concen: 55.658 ug/l  
 RT: 5.958 min Scan# 799  
 Delta R.T. 0.000 min  
 Lab File: VX025475.D  
 Acq: 03 Dec 2021 12:25

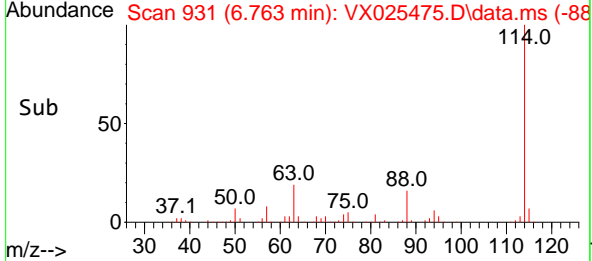
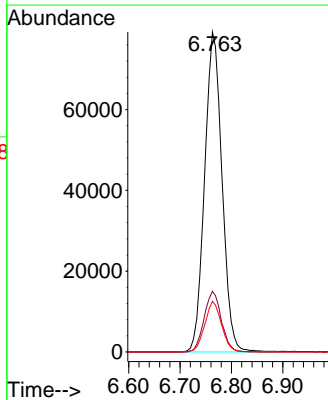
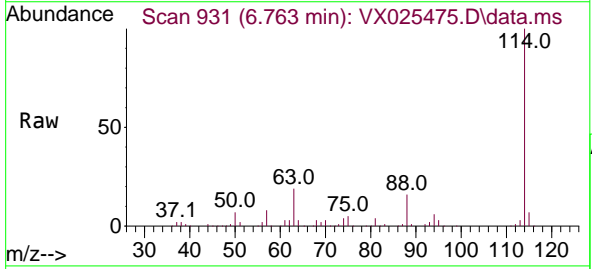
Instrument : MSVOA\_X  
 ClientSampleId : MW-35DL

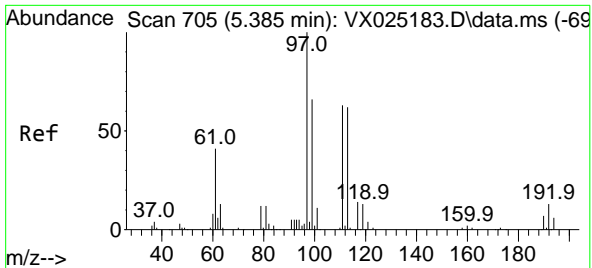
Tgt Ion: 65 Resp: 64632  
 Ion Ratio Lower Upper  
 65 100  
 67 52.1 0.0 101.0



#34  
 1,4-Difluorobenzene  
 Concen: 50.000 ug/l  
 RT: 6.763 min Scan# 931  
 Delta R.T. -0.000 min  
 Lab File: VX025475.D  
 Acq: 03 Dec 2021 12:25

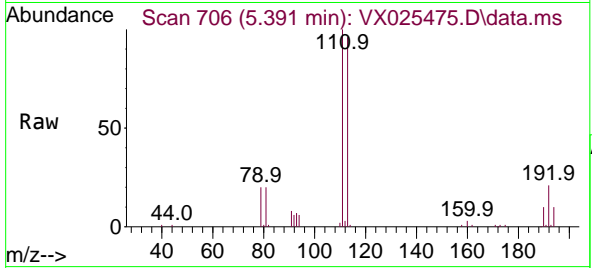
Tgt Ion: 114 Resp: 186532  
 Ion Ratio Lower Upper  
 114 100  
 63 18.9 0.0 41.0  
 88 15.8 0.0 34.8



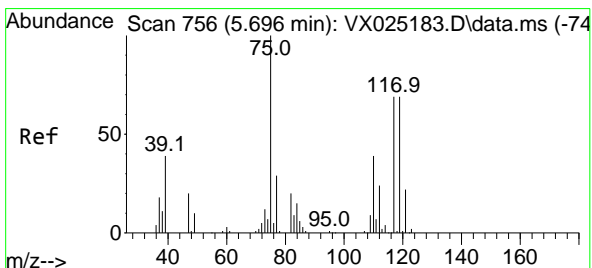
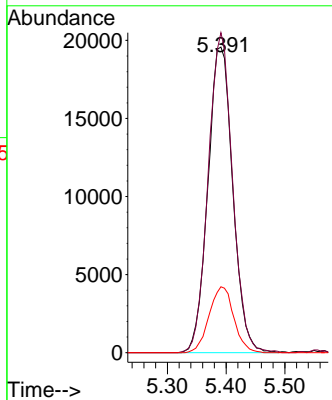
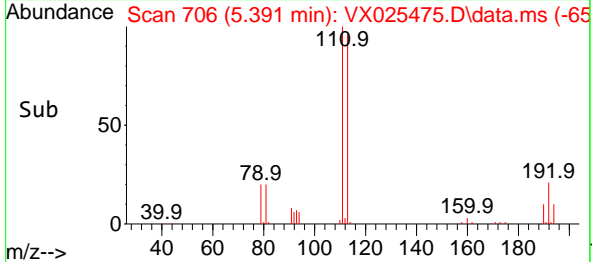


#35  
 Dibromofluoromethane  
 Concen: 50.419 ug/l  
 RT: 5.391 min Scan# 705  
 Delta R.T. 0.006 min  
 Lab File: VX025475.D  
 Acq: 03 Dec 2021 12:25

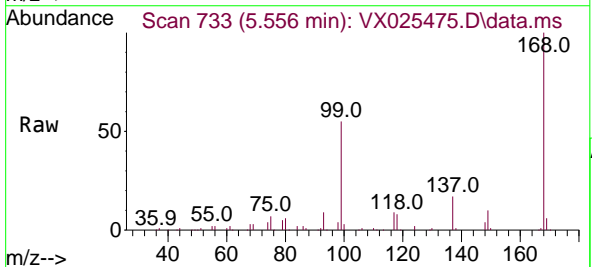
Instrument : MSVOA\_X  
 Client SampleId : MW-35DL



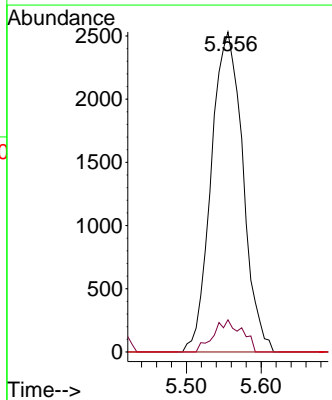
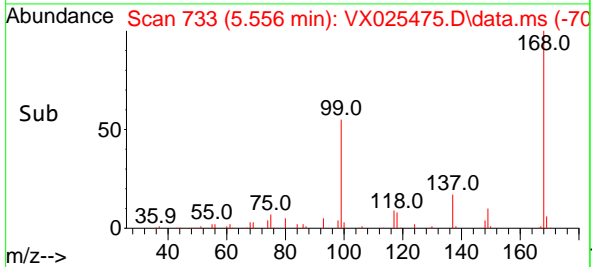
Tgt Ion: 113 Resp: 57705  
 Ion Ratio Lower Upper  
 113 100  
 111 102.1 82.1 123.1  
 192 21.3 15.6 23.4

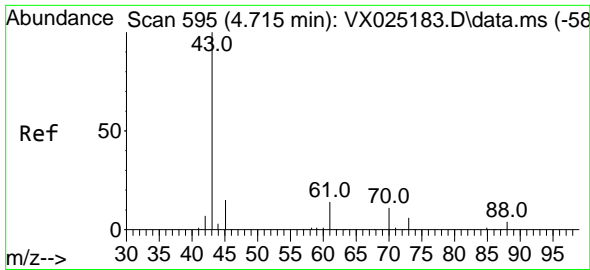


#36  
 1,1-Dichloropropene  
 Concen: 4.571 ug/l  
 RT: 5.556 min Scan# 733  
 Delta R.T. -0.140 min  
 Lab File: VX025475.D  
 Acq: 03 Dec 2021 12:25



Tgt Ion: 75 Resp: 7439  
 Ion Ratio Lower Upper  
 75 100  
 110 9.0 18.1 54.3#  
 77 0.0 24.4 36.6#



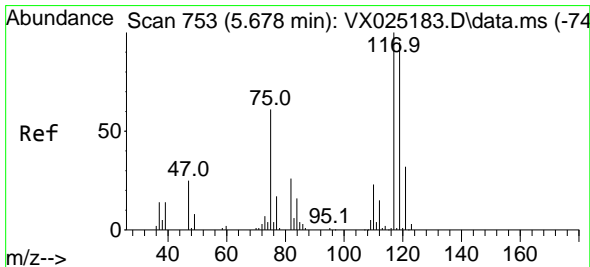
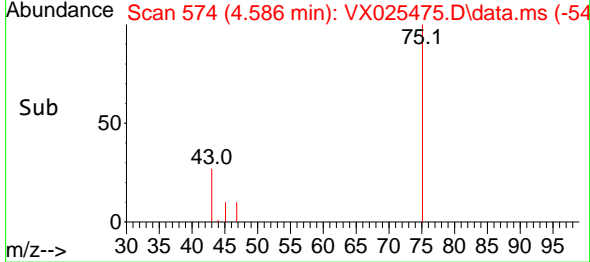
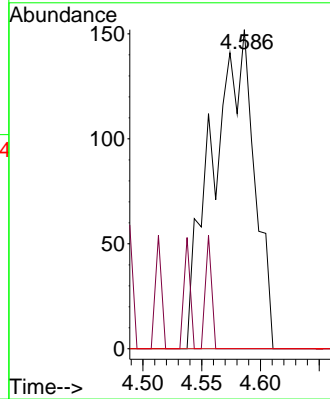
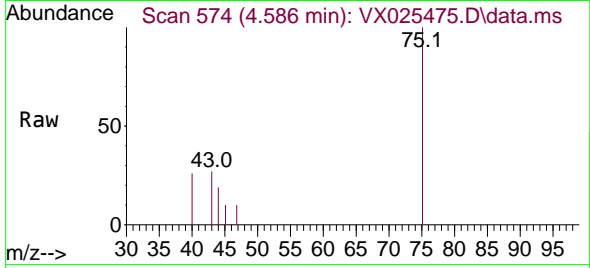


#37  
 Ethyl Acetate  
 Concen: 0.204 ug/l  
 RT: 4.586 min Scan# 51  
 Delta R.T. -0.129 min  
 Lab File: VX025475.D  
 Acq: 03 Dec 2021 12:25

Instrument :  
 MSVOA\_X  
 ClientSampleId :  
 MW-35DL

Tgt Ion: 43 Resp: 378

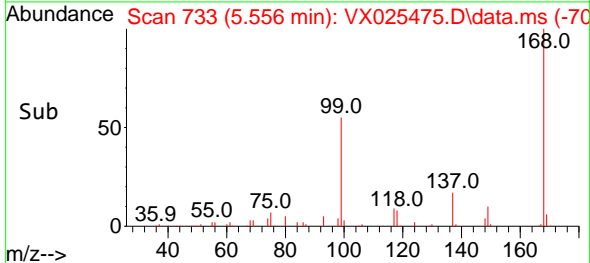
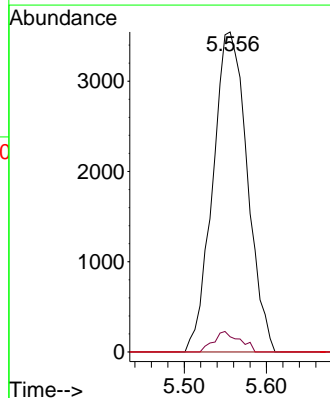
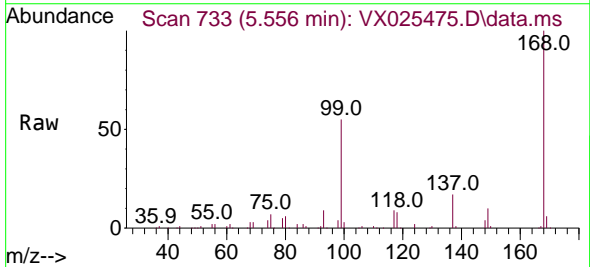
Ion	Ratio	Lower	Upper
43	100		
61	0.0	11.4	17.0#
70	0.0	8.6	12.8#

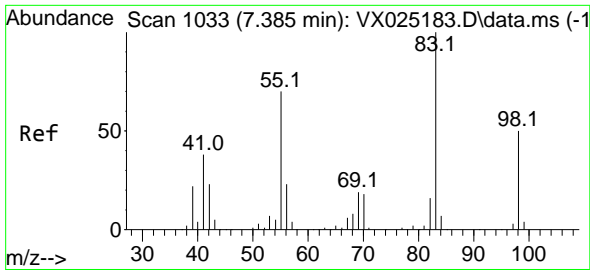


#38  
 Carbon Tetrachloride  
 Concen: 5.762 ug/l  
 RT: 5.556 min Scan# 733  
 Delta R.T. -0.122 min  
 Lab File: VX025475.D  
 Acq: 03 Dec 2021 12:25

Tgt Ion: 117 Resp: 10328

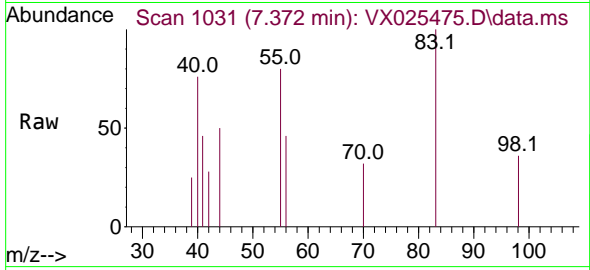
Ion	Ratio	Lower	Upper
117	100		
119	4.8	75.6	113.4#
121	0.0	23.7	35.5#



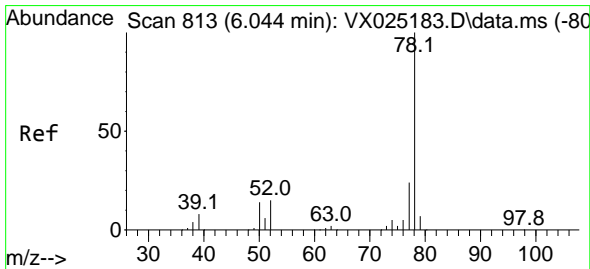
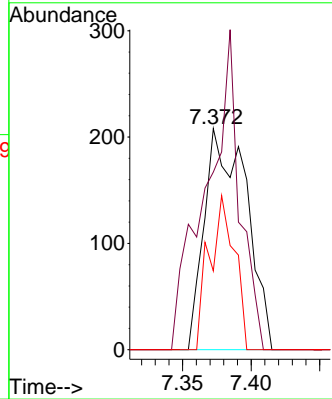
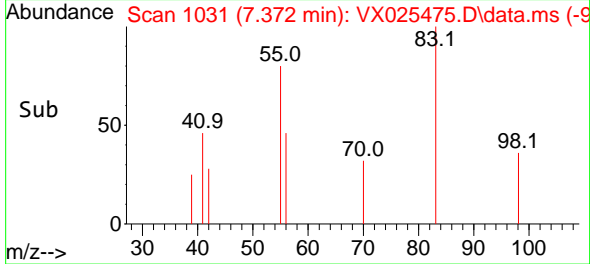


#39  
 Methylcyclohexane  
 Concen: 0.213 ug/l  
 RT: 7.372 min Scan# 1031  
 Delta R.T. -0.013 min  
 Lab File: VX025475.D  
 Acq: 03 Dec 2021 12:25

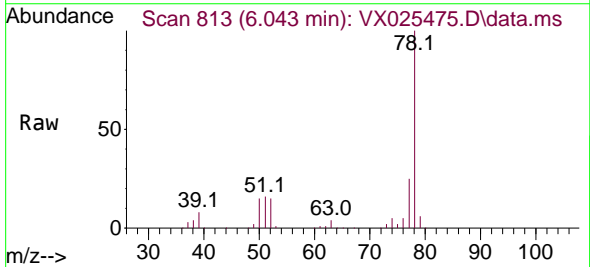
Instrument : MSVOA\_X  
 ClientSampleId : MW-35DL



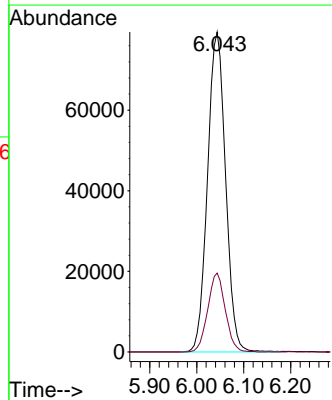
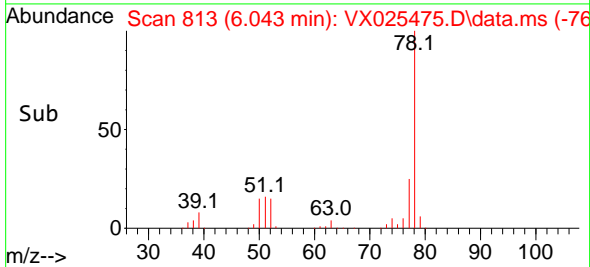
Tgt Ion: 83 Resp: 445  
 Ion Ratio Lower Upper  
 83 100  
 55 80.3 60.8 91.2  
 98 35.6 37.0 55.4#

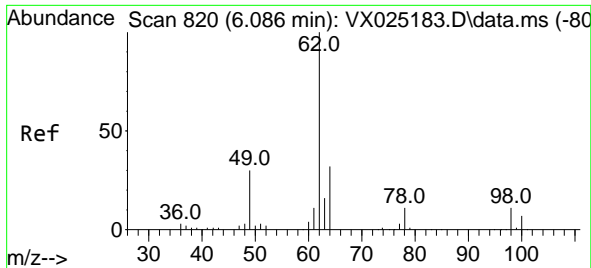


#40  
 Benzene  
 Concen: 42.894 ug/l  
 RT: 6.043 min Scan# 813  
 Delta R.T. -0.001 min  
 Lab File: VX025475.D  
 Acq: 03 Dec 2021 12:25



Tgt Ion: 78 Resp: 211465  
 Ion Ratio Lower Upper  
 78 100  
 77 24.6 18.3 27.5

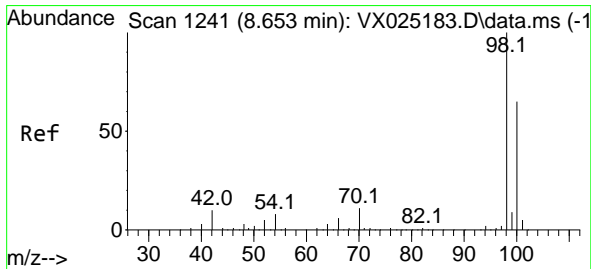
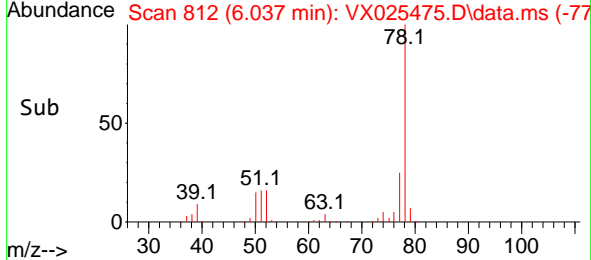
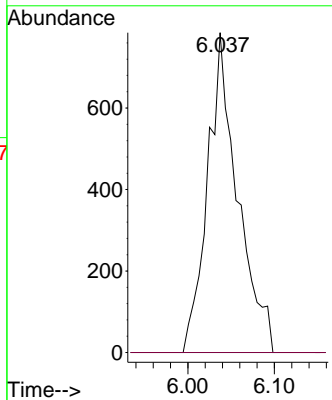
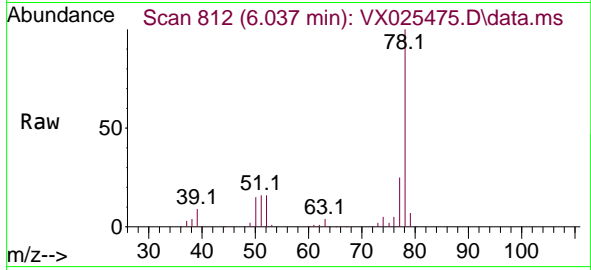




#42  
 1,2-Dichloroethane  
 Concen: 1.180 ug/l  
 RT: 6.037 min Scan# 812  
 Delta R.T. -0.049 min  
 Lab File: VX025475.D  
 Acq: 03 Dec 2021 12:25

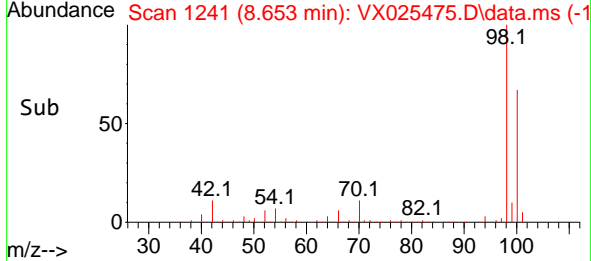
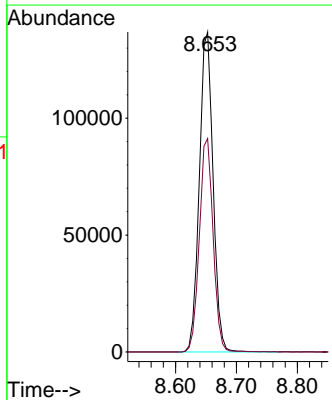
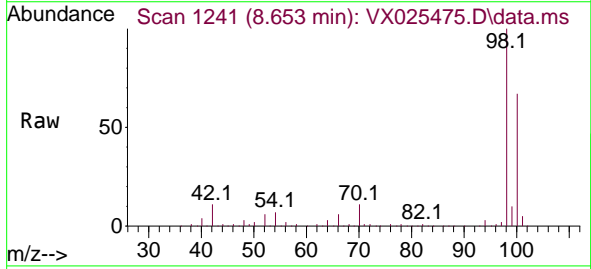
Instrument : MSVOA\_X  
 ClientSampleId : MW-35DL

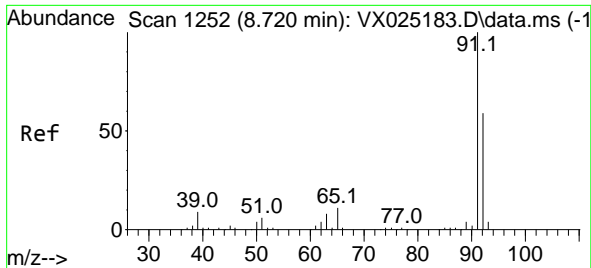
Tgt Ion: 62 Resp: 1893  
 Ion Ratio Lower Upper  
 62 100  
 98 0.0 0.0 16.0



#50  
 Toluene-d8  
 Concen: 49.896 ug/l  
 RT: 8.653 min Scan# 1241  
 Delta R.T. -0.000 min  
 Lab File: VX025475.D  
 Acq: 03 Dec 2021 12:25

Tgt Ion: 98 Resp: 214711  
 Ion Ratio Lower Upper  
 98 100  
 100 66.9 51.4 77.0

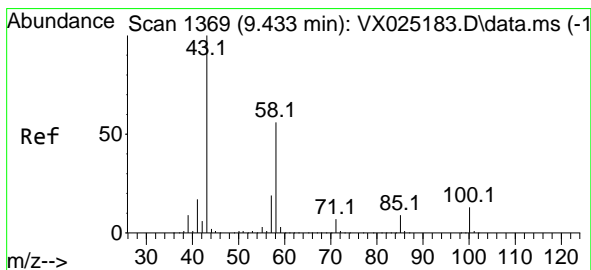
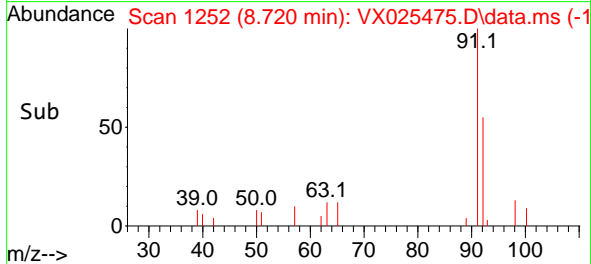
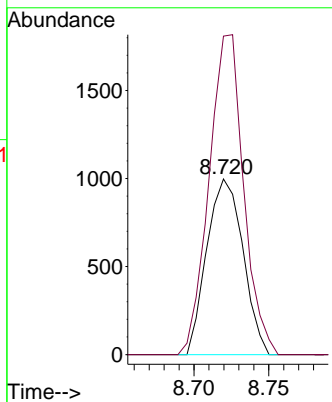
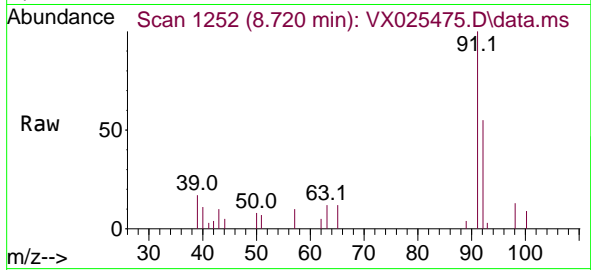




#52  
 Toluene  
 Concen: 0.521 ug/l  
 RT: 8.720 min Scan# 1111  
 Delta R.T. -0.000 min  
 Lab File: VX025475.D  
 Acq: 03 Dec 2021 12:25

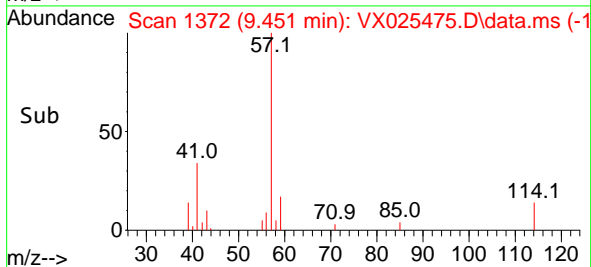
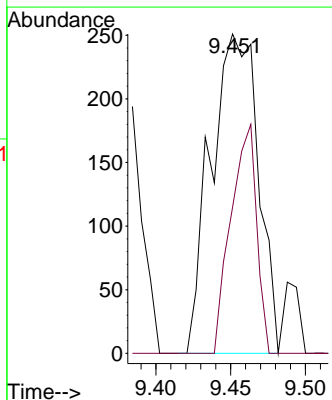
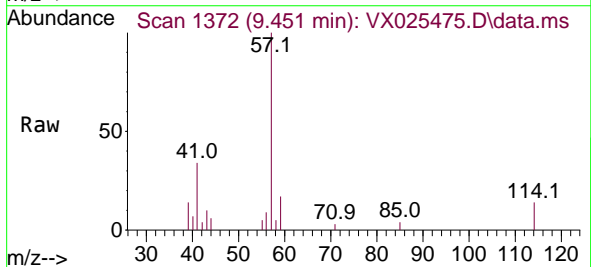
Instrument : MSVOA\_X  
 ClientSampleId : MW-35DL

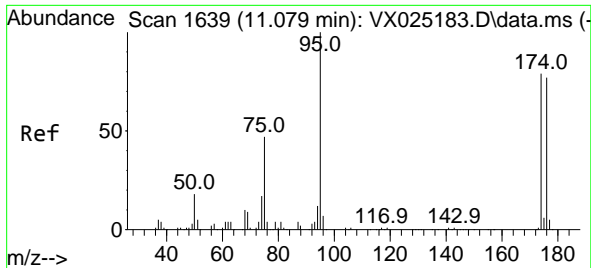
Tgt Ion: 92 Resp: 1676  
 Ion Ratio Lower Upper  
 92 100  
 91 174.5 138.6 208.0



#59  
 2-Hexanone  
 Concen: 0.363 ug/l  
 RT: 9.451 min Scan# 1372  
 Delta R.T. 0.018 min  
 Lab File: VX025475.D  
 Acq: 03 Dec 2021 12:25

Tgt Ion: 43 Resp: 553  
 Ion Ratio Lower Upper  
 43 100  
 58 38.9 26.6 79.7



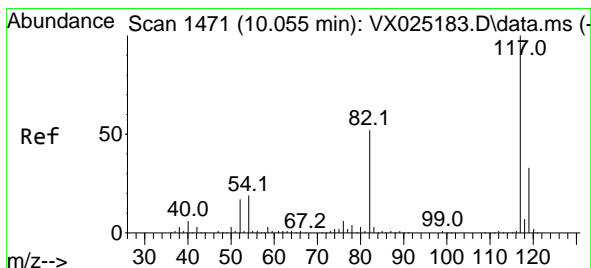
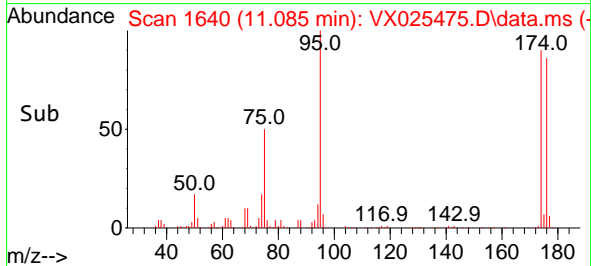
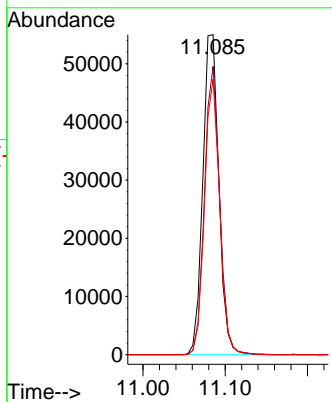
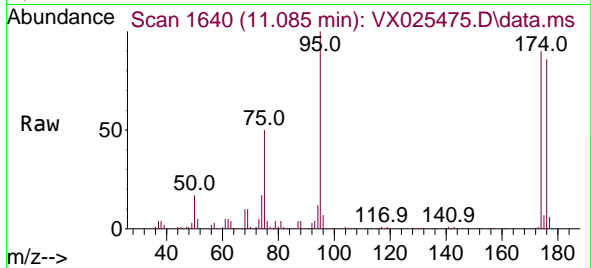


#62  
 4-Bromofluorobenzene  
 Concen: 45.869 ug/l  
 RT: 11.085 min Scan# 11085  
 Delta R.T. 0.006 min  
 Lab File: VX025475.D  
 Acq: 03 Dec 2021 12:25

Instrument : MSVOA\_X  
 ClientSampleId : MW-35DL

Tgt Ion: 95 Resp: 74671

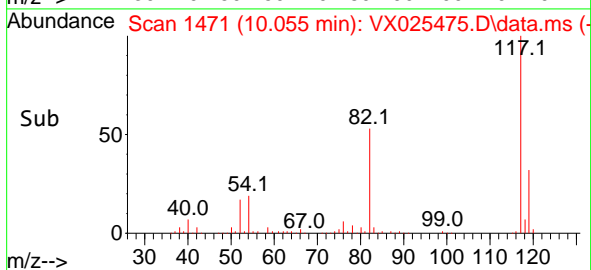
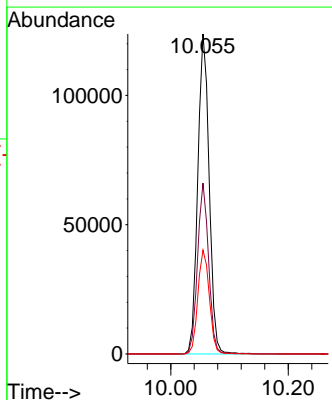
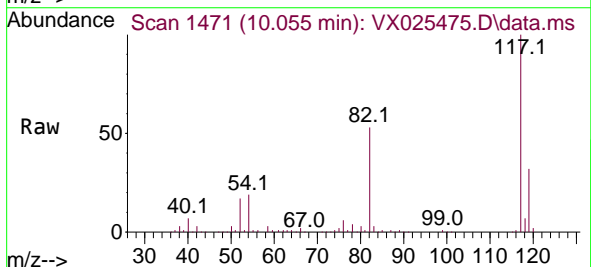
Ion	Ratio	Lower	Upper
95	100		
174	85.1	0.0	158.0
176	81.3	0.0	153.6



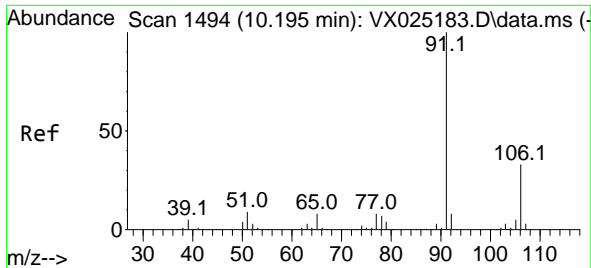
#63  
 Chlorobenzene-d5  
 Concen: 50.000 ug/l  
 RT: 10.055 min Scan# 1471  
 Delta R.T. -0.000 min  
 Lab File: VX025475.D  
 Acq: 03 Dec 2021 12:25

Tgt Ion: 117 Resp: 166701

Ion	Ratio	Lower	Upper
117	100		
82	53.4	44.6	67.0
119	32.5	24.8	37.2



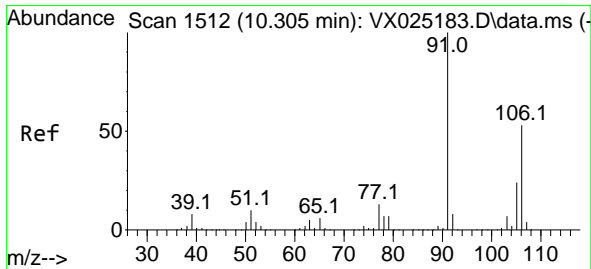
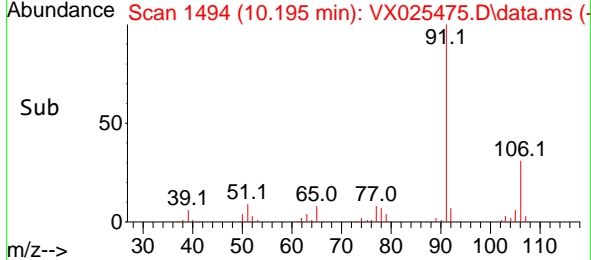
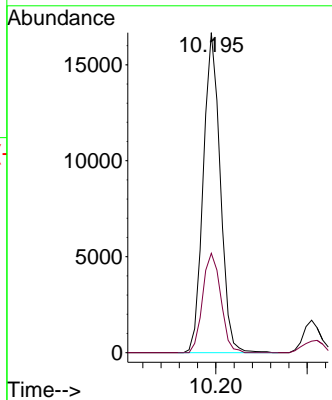
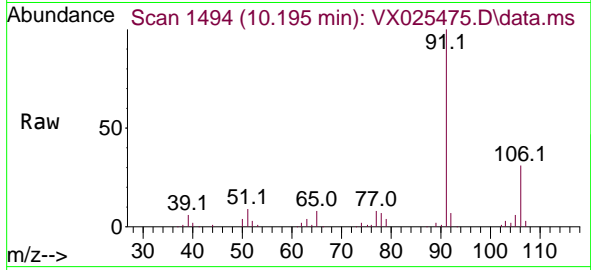




#67  
 Ethyl Benzene  
 Concen: 3.651 ug/l  
 RT: 10.195 min Scan# 1494  
 Delta R.T. 0.000 min  
 Lab File: VX025475.D  
 Acq: 03 Dec 2021 12:25

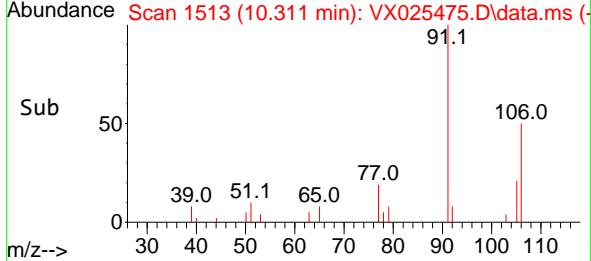
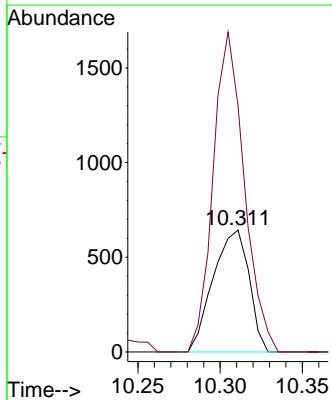
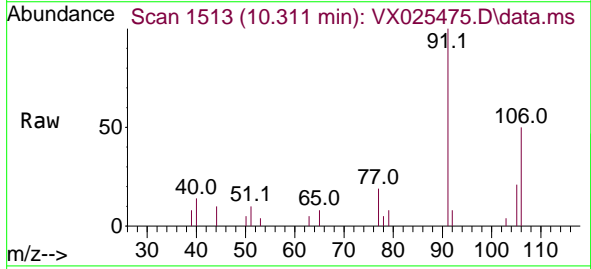
Instrument : MSVOA\_X  
 ClientSampleId : MW-35DL

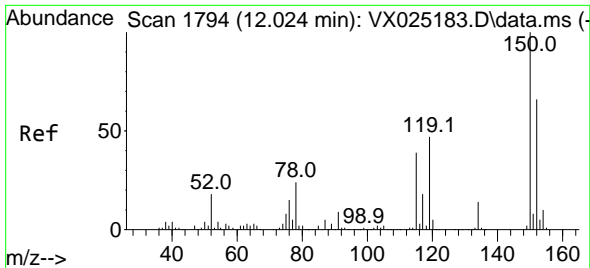
Tgt Ion: 91 Resp: 21431  
 Ion Ratio Lower Upper  
 91 100  
 106 31.0 24.7 37.1



#68  
 m/p-Xylenes  
 Concen: 0.407 ug/l  
 RT: 10.311 min Scan# 1513  
 Delta R.T. 0.006 min  
 Lab File: VX025475.D  
 Acq: 03 Dec 2021 12:25

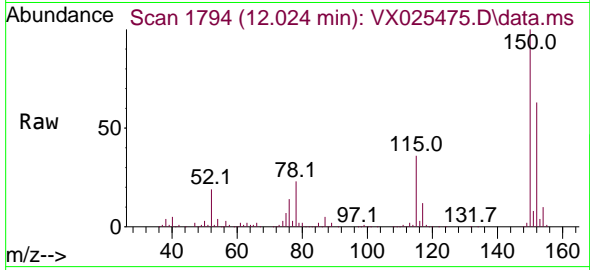
Tgt Ion: 106 Resp: 977  
 Ion Ratio Lower Upper  
 106 100  
 91 227.4 163.4 245.0



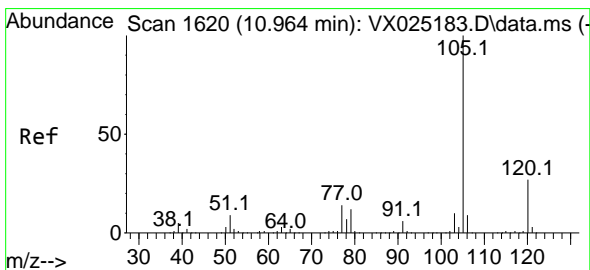
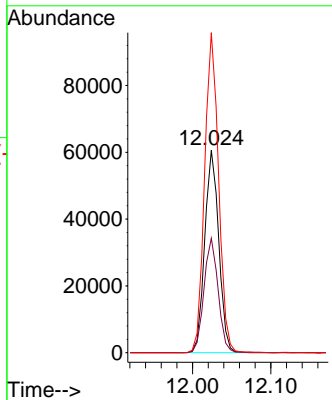
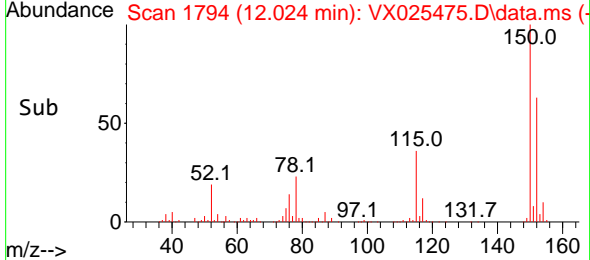


#72  
 1,4-Dichlorobenzene-d4  
 Concen: 50.000 ug/l  
 RT: 12.024 min Scan# 11  
 Delta R.T. -0.000 min  
 Lab File: VX025475.D  
 Acq: 03 Dec 2021 12:25

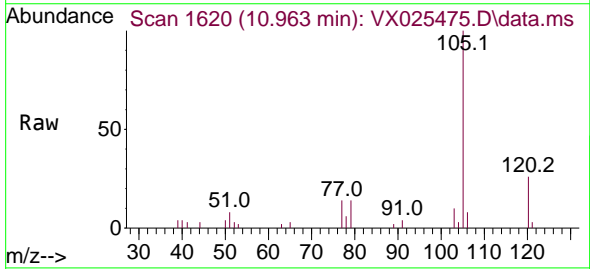
Instrument : MSVOA\_X  
 ClientSampleId : MW-35DL



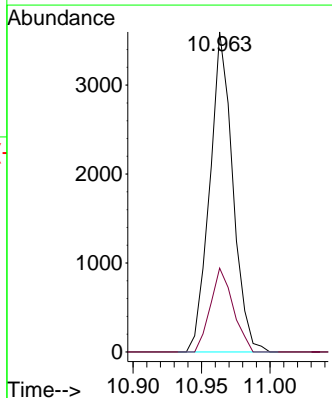
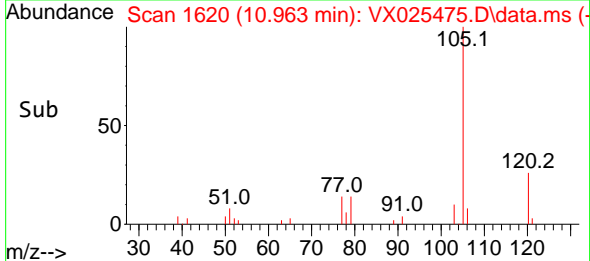
Tgt Ion:152 Resp: 75189  
 Ion Ratio Lower Upper  
 152 100  
 115 56.7 43.3 129.8  
 150 157.2 0.0 351.2

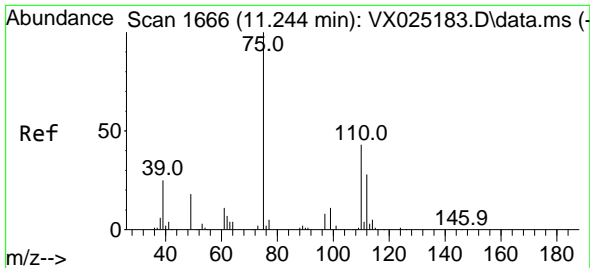


#73  
 Isopropylbenzene  
 Concen: 0.784 ug/l  
 RT: 10.963 min Scan# 1620  
 Delta R.T. -0.001 min  
 Lab File: VX025475.D  
 Acq: 03 Dec 2021 12:25



Tgt Ion:105 Resp: 4199  
 Ion Ratio Lower Upper  
 105 100  
 120 25.8 13.3 39.8

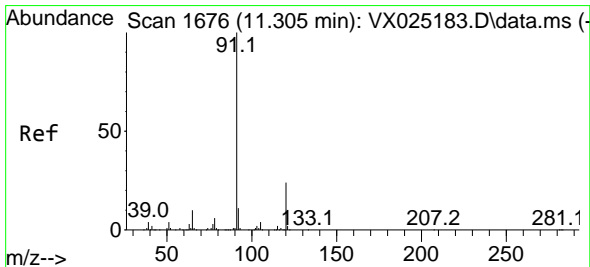
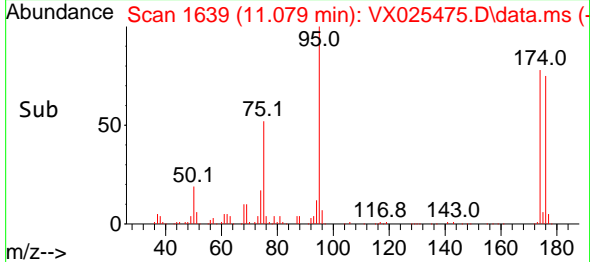
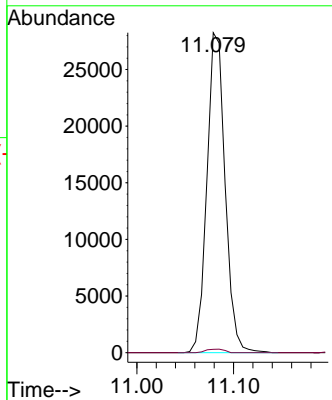
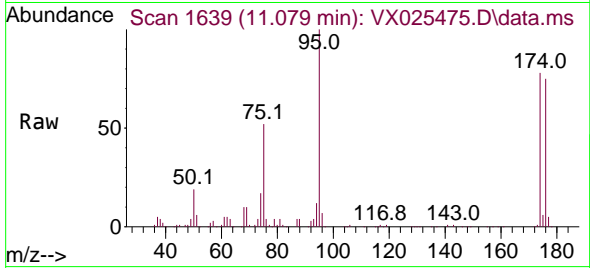




#76  
 1,2,3-Trichloropropane  
 Concen: 23.965 ug/l  
 RT: 11.079 min Scan# 1639  
 Delta R.T. -0.165 min  
 Lab File: VX025475.D  
 Acq: 03 Dec 2021 12:25

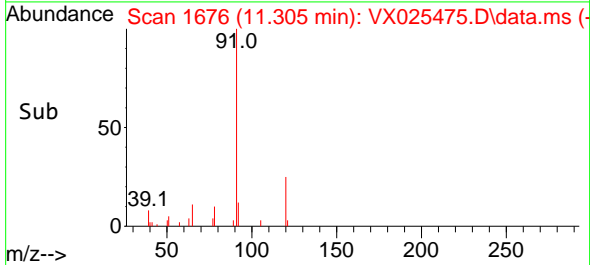
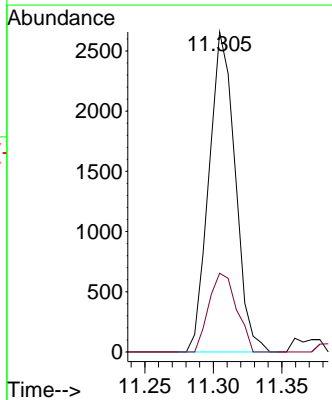
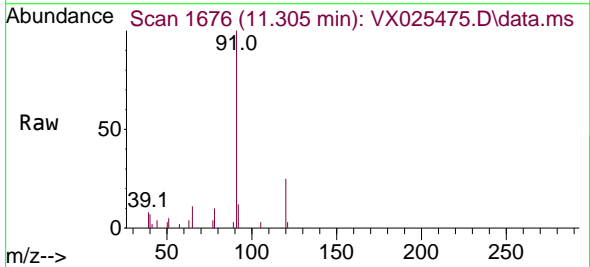
Instrument :  
 MSVOA\_X  
 ClientSampleId :  
 MW-35DL

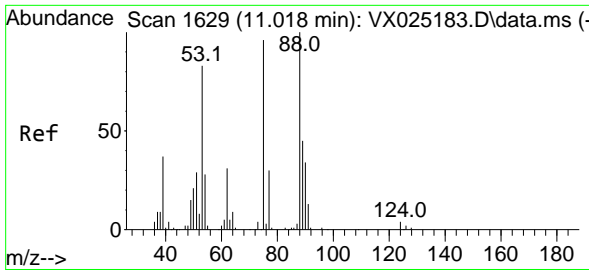
Tgt Ion: 75 Resp: 36899  
 Ion Ratio Lower Upper  
 75 100  
 77 1.1 20.0 59.9#



#78  
 n-propylbenzene  
 Concen: 0.588 ug/l  
 RT: 11.305 min Scan# 1676  
 Delta R.T. -0.000 min  
 Lab File: VX025475.D  
 Acq: 03 Dec 2021 12:25

Tgt Ion: 91 Resp: 3535  
 Ion Ratio Lower Upper  
 91 100  
 120 25.9 11.7 35.0

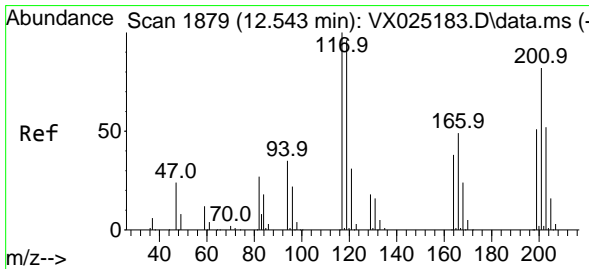
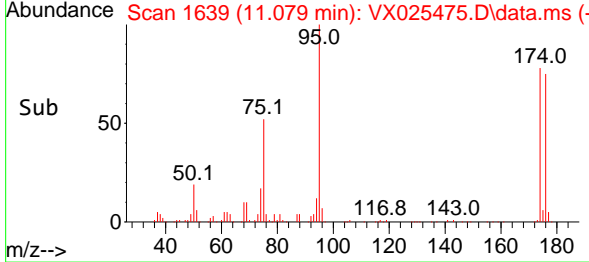
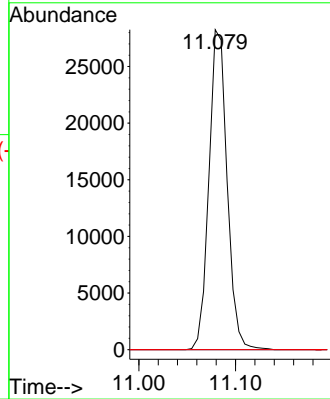
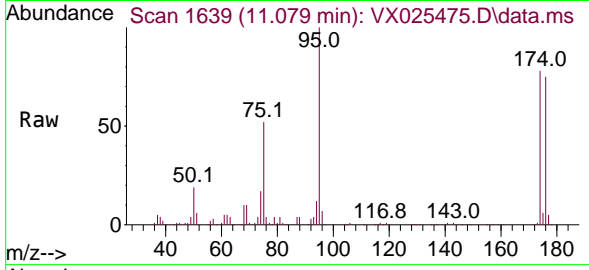




#81  
 trans-1,4-Dichloro-2-butene  
 Concen: 60.371 ug/l  
 RT: 11.079 min Scan# 1629  
 Delta R.T. 0.061 min  
 Lab File: VX025475.D  
 Acq: 03 Dec 2021 12:25

Instrument : MSVOA\_X  
 ClientSampleId : MW-35DL

Tgt Ion: 75 Resp: 36899  
 Ion Ratio Lower Upper  
 75 100  
 53 0.0 81.9 122.9#  
 89 0.0 38.2 57.2#



#90  
 Hexachloroethane  
 Concen: 0.463 ug/l  
 RT: 12.646 min Scan# 1896  
 Delta R.T. 0.103 min  
 Lab File: VX025475.D  
 Acq: 03 Dec 2021 12:25

Tgt Ion: 117 Resp: 408  
 Ion Ratio Lower Upper  
 117 100  
 201 0.0 38.9 116.6#

