

Data Path : Z:\voasrv\HPCHEM1\MSVOA\_X\Data\VX120321\  
 Data File : VX025505.D  
 Acq On : 04 Dec 2021 00:53  
 Operator : JC/MD  
 Sample : M4923-04DL 10X  
 Misc : 5.0mL/MSVOA\_X/WATER  
 ALS Vial : 39 Sample Multiplier: 1

Instrument :  
 MSVOA\_X  
 ClientSampleId :  
 RE103D2-20211130DL

Quant Time: Dec 04 11:06:34 2021  
 Quant Method : Z:\voasrv\HPCHEM1\MSVOA\_X\Method\82X111721W.M  
 Quant Title : SW846 8260  
 QLast Update : Wed Nov 17 15:36:16 2021  
 Response via : Initial Calibration

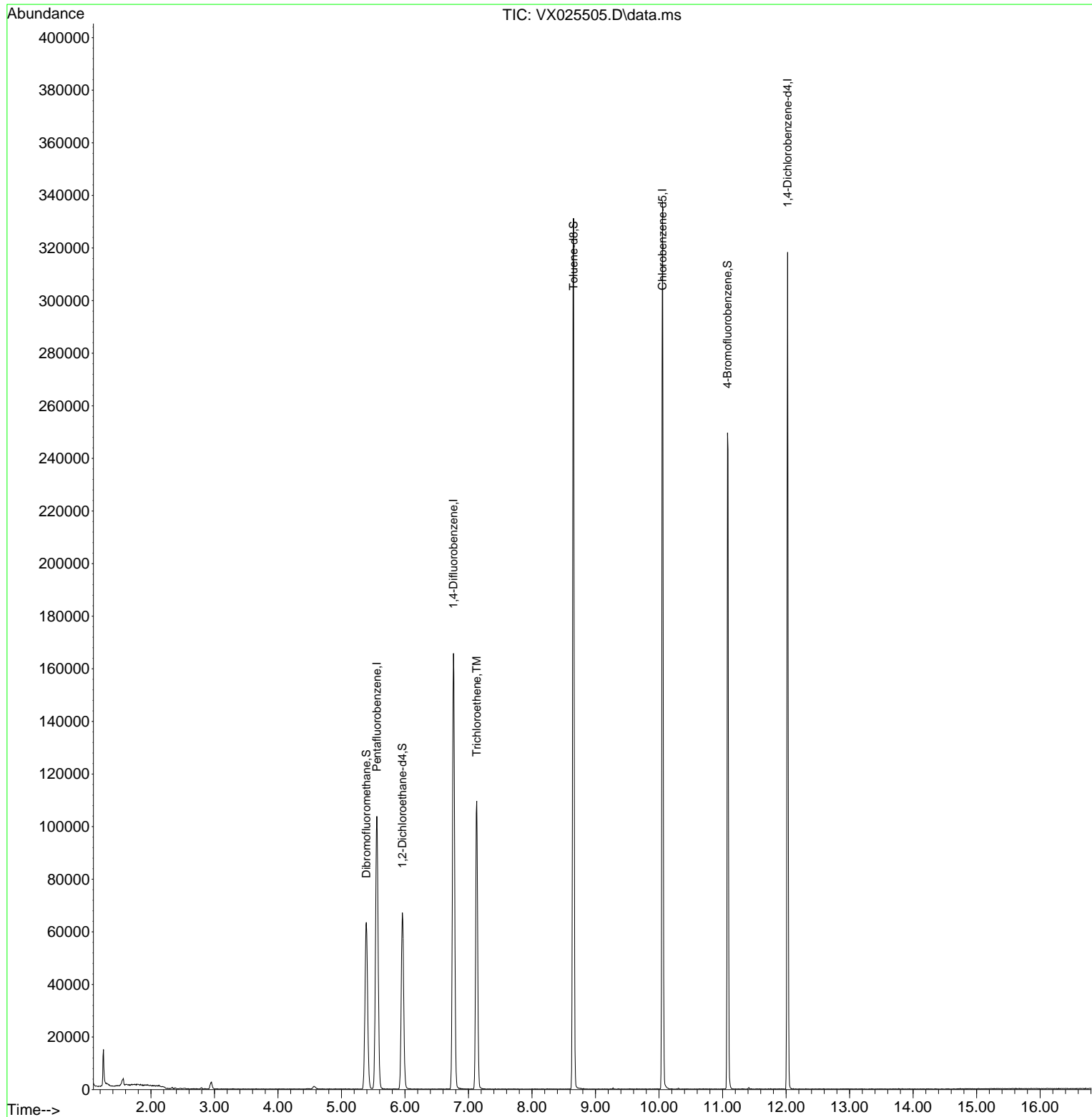
Compound	R.T.	QIon	Response	Conc	Units	Dev(Min)
-----						
Internal Standards						
1) Pentafluorobenzene	5.556	168	104964	50.000	ug/l	0.00
34) 1,4-Difluorobenzene	6.763	114	176931	50.000	ug/l	0.00
63) Chlorobenzene-d5	10.055	117	156987	50.000	ug/l	0.00
72) 1,4-Dichlorobenzene-d4	12.024	152	67281	50.000	ug/l	0.00
System Monitoring Compounds						
33) 1,2-Dichloroethane-d4	5.958	65	62607	56.587	ug/l	0.00
Spiked Amount	50.000	Range	78 - 117	Recovery	=	113.180%
35) Dibromofluoromethane	5.391	113	54907	50.578	ug/l	0.00
Spiked Amount	50.000	Range	75 - 124	Recovery	=	101.160%
50) Toluene-d8	8.653	98	202766	49.677	ug/l	0.00
Spiked Amount	50.000	Range	92 - 112	Recovery	=	99.360%
62) 4-Bromofluorobenzene	11.079	95	69263	44.855	ug/l	0.00
Spiked Amount	50.000	Range	83 - 123	Recovery	=	89.720%
Target Compounds						
44) Trichloroethene	7.129	130	44036	32.417	ug/l	90
-----						

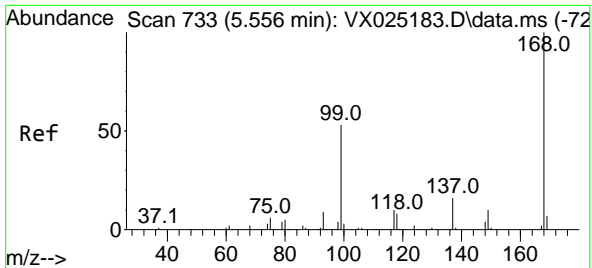
(#) = qualifier out of range (m) = manual integration (+) = signals summed

Data Path : Z:\voasrv\HPCHEM1\MSVOA\_X\Data\VX120321\  
 Data File : VX025505.D  
 Acq On : 04 Dec 2021 00:53  
 Operator : JC/MD  
 Sample : M4923-04DL 10X  
 Misc : 5.0mL/MSVOA\_X/WATER  
 ALS Vial : 39 Sample Multiplier: 1

Instrument :  
 MSVOA\_X  
 ClientSampleId :  
 RE103D2-20211130DL

Quant Time: Dec 04 11:06:34 2021  
 Quant Method : Z:\voasrv\HPCHEM1\MSVOA\_X\Method\82X111721W.M  
 Quant Title : SW846 8260  
 QLast Update : Wed Nov 17 15:36:16 2021  
 Response via : Initial Calibration

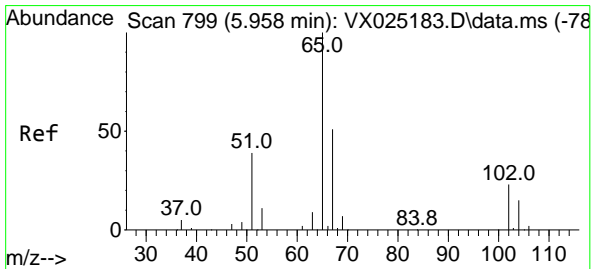
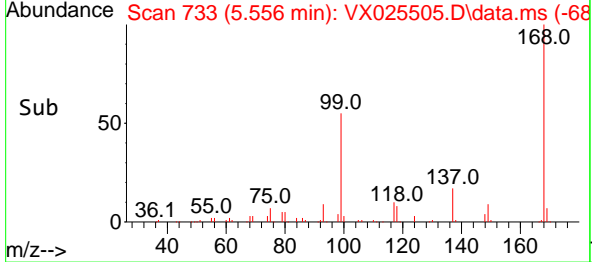
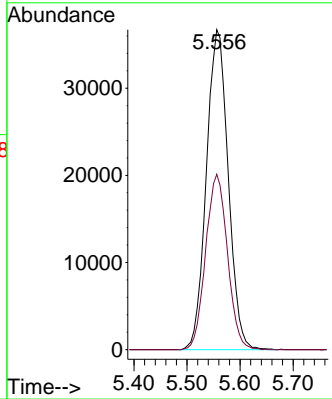
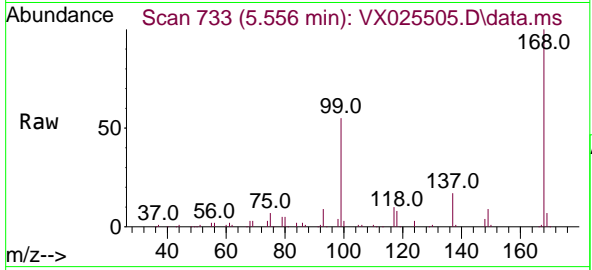




#1  
 Pentafluorobenzene  
 Concen: 50.000 ug/l  
 RT: 5.556 min Scan# 711  
 Delta R.T. -0.000 min  
 Lab File: VX025505.D  
 Acq: 04 Dec 2021 00:53

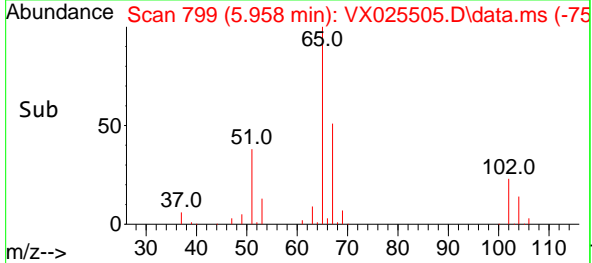
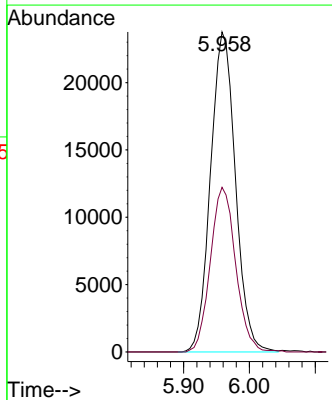
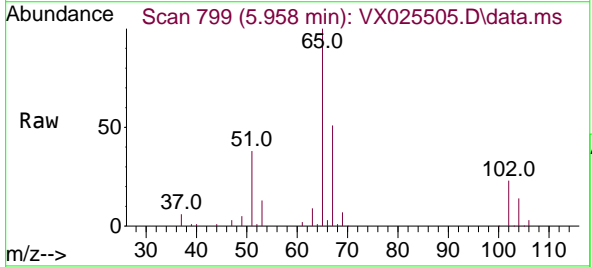
Instrument : MSVOA\_X  
 ClientSampleId : RE103D2-20211130DL

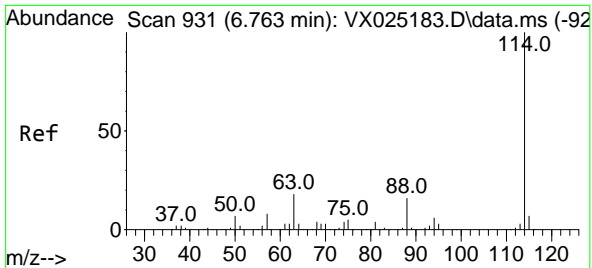
Tgt Ion:168 Resp: 104964  
 Ion Ratio Lower Upper  
 168 100  
 99 54.8 46.4 69.6



#33  
 1,2-Dichloroethane-d4  
 Concen: 56.587 ug/l  
 RT: 5.958 min Scan# 799  
 Delta R.T. 0.000 min  
 Lab File: VX025505.D  
 Acq: 04 Dec 2021 00:53

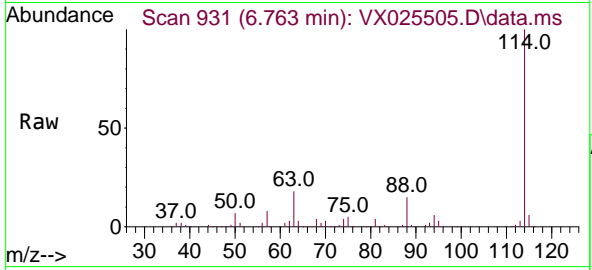
Tgt Ion: 65 Resp: 62607  
 Ion Ratio Lower Upper  
 65 100  
 67 52.4 0.0 101.0



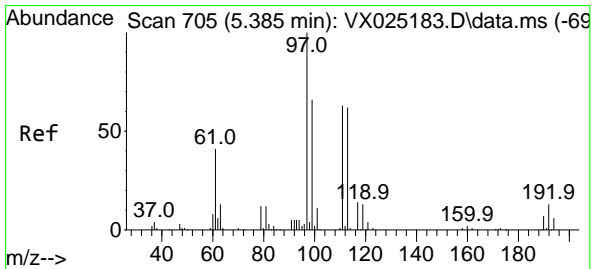
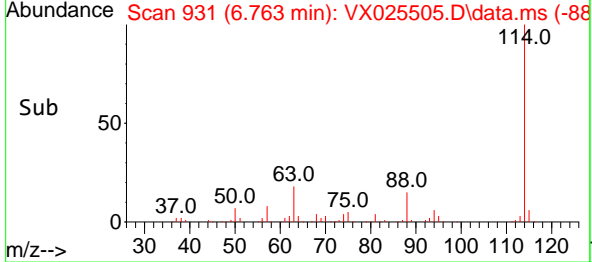
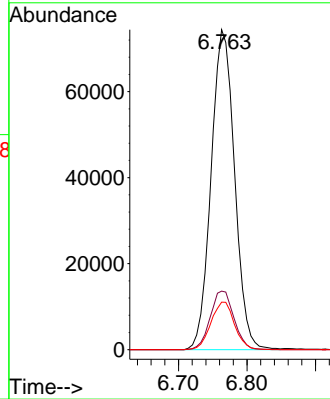


#34  
 1,4-Difluorobenzene  
 Concen: 50.000 ug/l  
 RT: 6.763 min Scan# 91  
 Delta R.T. 0.000 min  
 Lab File: VX025505.D  
 Acq: 04 Dec 2021 00:53

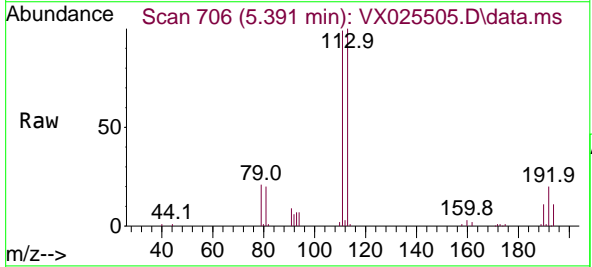
Instrument :  
 MSVOA\_X  
 ClientSampleId :  
 RE103D2-20211130DL



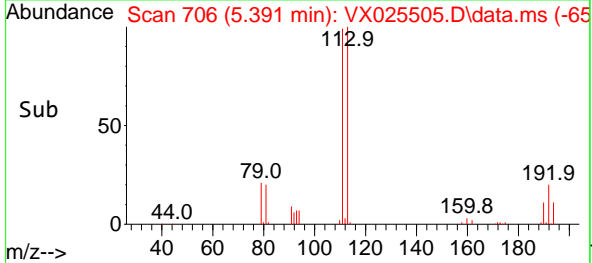
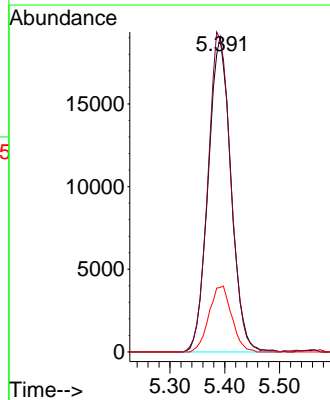
Tgt Ion:114 Resp: 176931  
 Ion Ratio Lower Upper  
 114 100  
 63 18.3 0.0 41.0  
 88 14.9 0.0 34.8

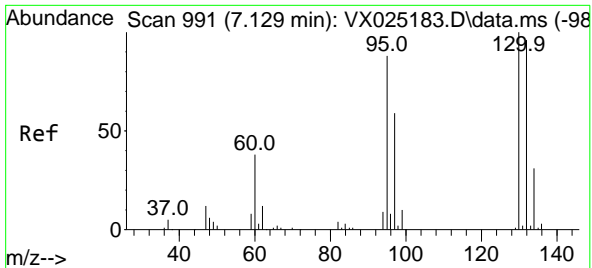


#35  
 Dibromofluoromethane  
 Concen: 50.578 ug/l  
 RT: 5.391 min Scan# 706  
 Delta R.T. 0.006 min  
 Lab File: VX025505.D  
 Acq: 04 Dec 2021 00:53



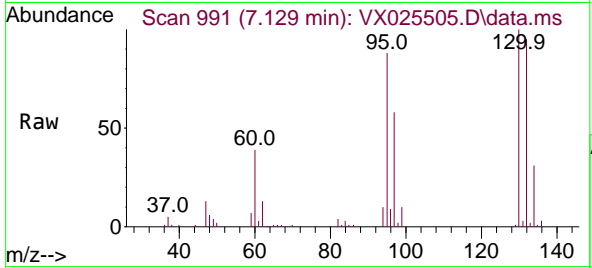
Tgt Ion:113 Resp: 54907  
 Ion Ratio Lower Upper  
 113 100  
 111 102.2 82.1 123.1  
 192 20.8 15.6 23.4



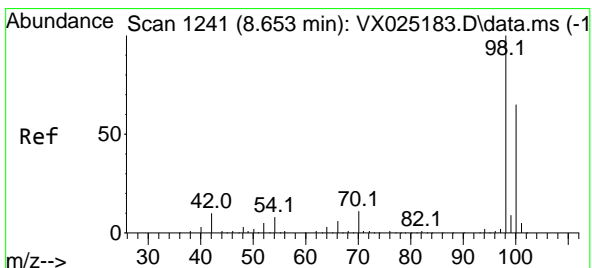
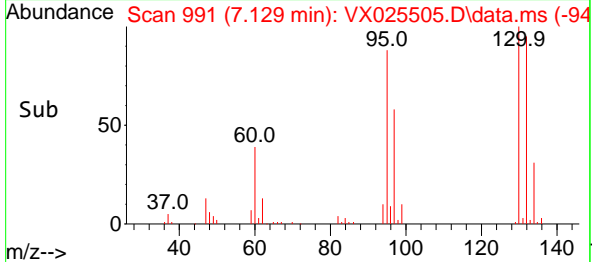
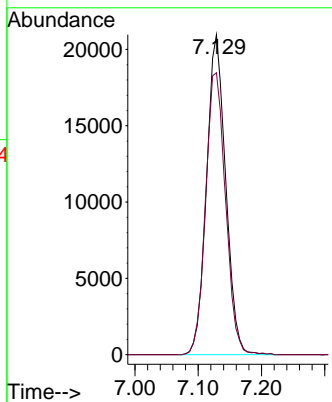


#44  
 Trichloroethene  
 Concen: 32.417 ug/l  
 RT: 7.129 min Scan# 991  
 Delta R.T. -0.000 min  
 Lab File: VX025505.D  
 Acq: 04 Dec 2021 00:53

Instrument : MSVOA\_X  
 ClientSampleId : RE103D2-20211130DL

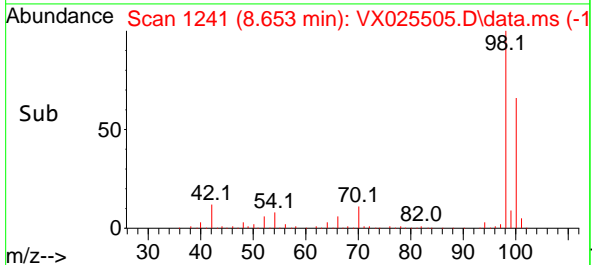
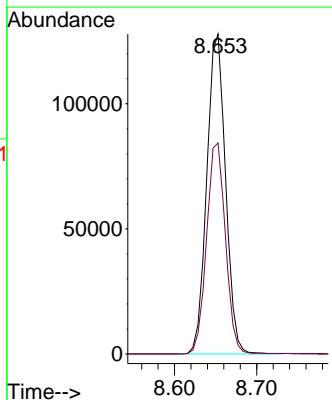
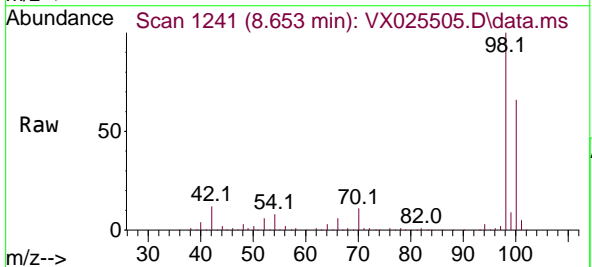


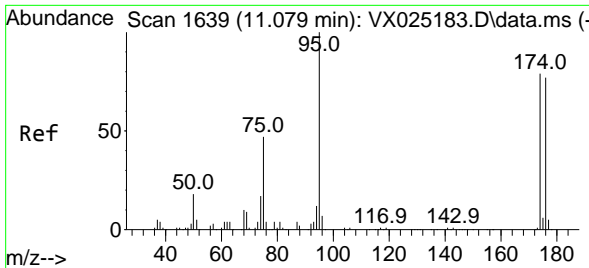
Tgt Ion:130 Resp: 44036  
 Ion Ratio Lower Upper  
 130 100  
 95 88.1 0.0 196.8



#50  
 Toluene-d8  
 Concen: 49.677 ug/l  
 RT: 8.653 min Scan# 1241  
 Delta R.T. -0.000 min  
 Lab File: VX025505.D  
 Acq: 04 Dec 2021 00:53

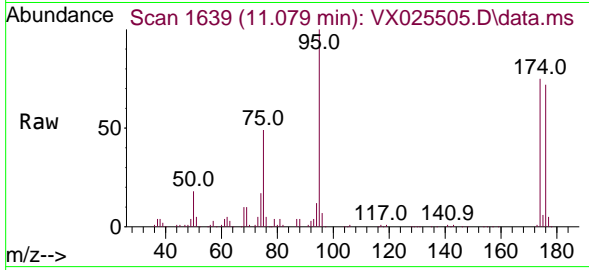
Tgt Ion: 98 Resp: 202766  
 Ion Ratio Lower Upper  
 98 100  
 100 66.4 51.4 77.0



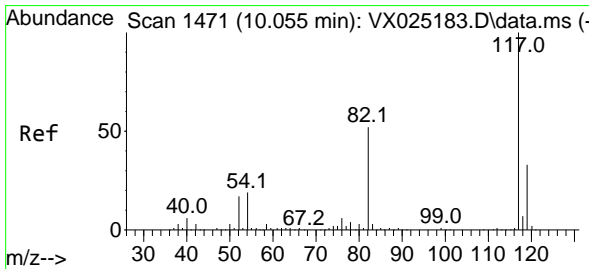
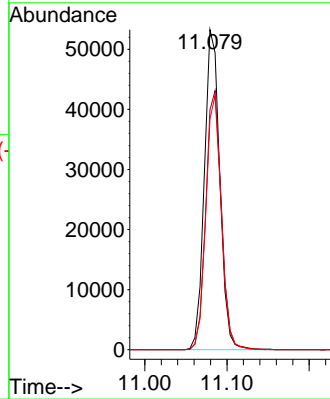
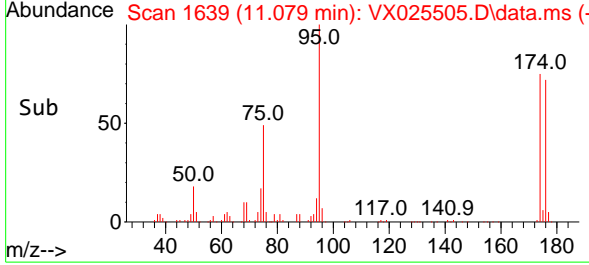


#62  
 4-Bromofluorobenzene  
 Concen: 44.855 ug/l  
 RT: 11.079 min Scan# 1639  
 Delta R.T. 0.000 min  
 Lab File: VX025505.D  
 Acq: 04 Dec 2021 00:53

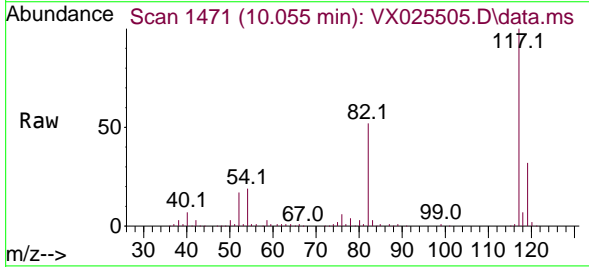
Instrument : MSVOA\_X  
 ClientSampleId : RE103D2-20211130DL



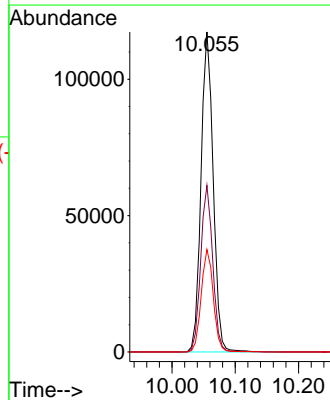
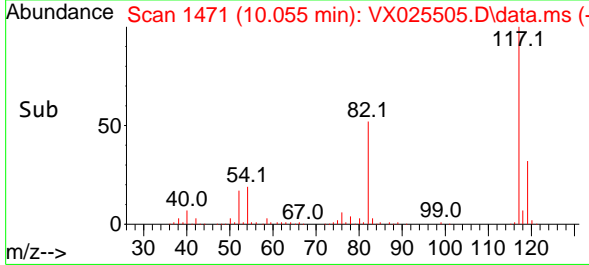
Tgt Ion: 95 Resp: 69263  
 Ion Ratio Lower Upper  
 95 100  
 174 82.1 0.0 158.0  
 176 79.8 0.0 153.6

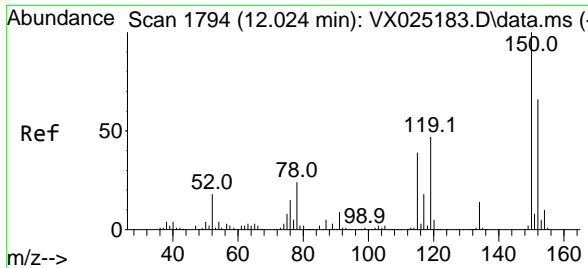


#63  
 Chlorobenzene-d5  
 Concen: 50.000 ug/l  
 RT: 10.055 min Scan# 1471  
 Delta R.T. 0.000 min  
 Lab File: VX025505.D  
 Acq: 04 Dec 2021 00:53



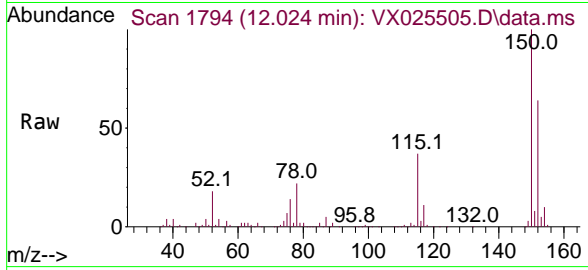
Tgt Ion: 117 Resp: 156987  
 Ion Ratio Lower Upper  
 117 100  
 82 52.1 44.6 67.0  
 119 32.0 24.8 37.2





#72  
 1,4-Dichlorobenzene-d4  
 Concen: 50.000 ug/l  
 RT: 12.024 min Scan# 11  
 Delta R.T. 0.000 min  
 Lab File: VX025505.D  
 Acq: 04 Dec 2021 00:53

Instrument :  
 MSVOA\_X  
 ClientSampleId :  
 RE103D2-20211130DL



Tgt Ion:152 Resp: 67281

Ion	Ratio	Lower	Upper
152	100		
115	57.1	43.3	129.8
150	155.4	0.0	351.2

