

Data Path : Z:\VOASRV\HPCHEM1\MSVOA X\DATA\VX120420\
 Data File : VX019734.D
 Acq On : 04 Dec 2020 22:00
 Operator : JC/MD
 Sample : L4953-01
 Misc : 5.0mL/MSVOA X/WATER
 ALS Vial : 27 Sample Multiplier: 1

Instrument :
 MSVOA_X
 ClientSampleId :
 ID039-39MWE1D-120220

Integration Parameters: RTEINT.P
 Integrator: RTE
 Smoothing : ON
 Sampling : 1
 Start Thrs: 0.2
 Stop Thrs : 0

Filtering: 5
 Min Area: 3 % of largest Peak
 Max Peaks: 100
 Peak Location: TOP

If leading or trailing edge < 100 prefer < Baseline drop else tangent >
 Peak separation: 5

Method : Z:\VOASRV\HPCHEM1\MSVOA_X\METHOD\82X120420W.M
 Title : SW846 8260

Signal : TIC

peak #	R.T. min	first scan	max scan	last scan	PK TY	peak height	corr. area	corr. % max.	% of total
1	1.295	28	34	47	rBV	21953	87870	5.16%	0.916%
2	1.776	108	113	119	rVB	19823	28936	1.70%	0.302%
3	2.575	237	244	259	rVB	35731	68178	4.00%	0.710%
4	2.867	287	292	299	rVB2	11861	25378	1.49%	0.264%
5	2.989	305	312	322	rVB	14096	34628	2.03%	0.361%
6	3.148	332	338	347	rBV2	10971	24679	1.45%	0.257%
7	4.367	529	538	549	rVB4	8048	24309	1.43%	0.253%
8	5.464	704	718	730	rBV	190342	544391	31.95%	5.673%
9	5.629	734	745	765	rVB	346280	990602	58.15%	10.322%
10	6.025	800	810	826	rBV	211164	562002	32.99%	5.856%
11	6.830	931	942	955	rBV	527575	1266020	74.31%	13.192%
12	8.696	1234	1248	1256	rBV	1096552	1703671	100.00%	17.752%
13	10.092	1471	1477	1489	rBV	1067119	1458559	85.61%	15.198%
14	10.232	1496	1500	1506	rVB	15658	21171	1.24%	0.221%
15	11.122	1640	1646	1659	rBV	867466	1111023	65.21%	11.577%
16	11.341	1676	1682	1689	rBV	18389	24037	1.41%	0.250%
17	11.439	1689	1698	1703	rVV2	12435	21657	1.27%	0.226%
18	11.793	1751	1756	1760	rVB	23302	29561	1.74%	0.308%
19	12.061	1794	1800	1807	rBV	1125088	1357479	79.68%	14.145%
20	12.280	1828	1836	1843	rVV3	21523	34858	2.05%	0.363%
21	12.354	1843	1848	1856	rVB3	11038	18873	1.11%	0.197%
22	12.652	1892	1897	1900	rBV	25516	31020	1.82%	0.323%
23	12.957	1940	1947	1951	rBV	14663	19287	1.13%	0.201%
24	13.329	2004	2008	2018	rVB2	17853	27867	1.64%	0.290%
25	13.817	2079	2088	2095	rBV	16977	25446	1.49%	0.265%
26	14.676	2222	2229	2234	rBV	22808	30991	1.82%	0.323%
27	14.823	2248	2253	2262	rVB	16406	24420	1.43%	0.254%

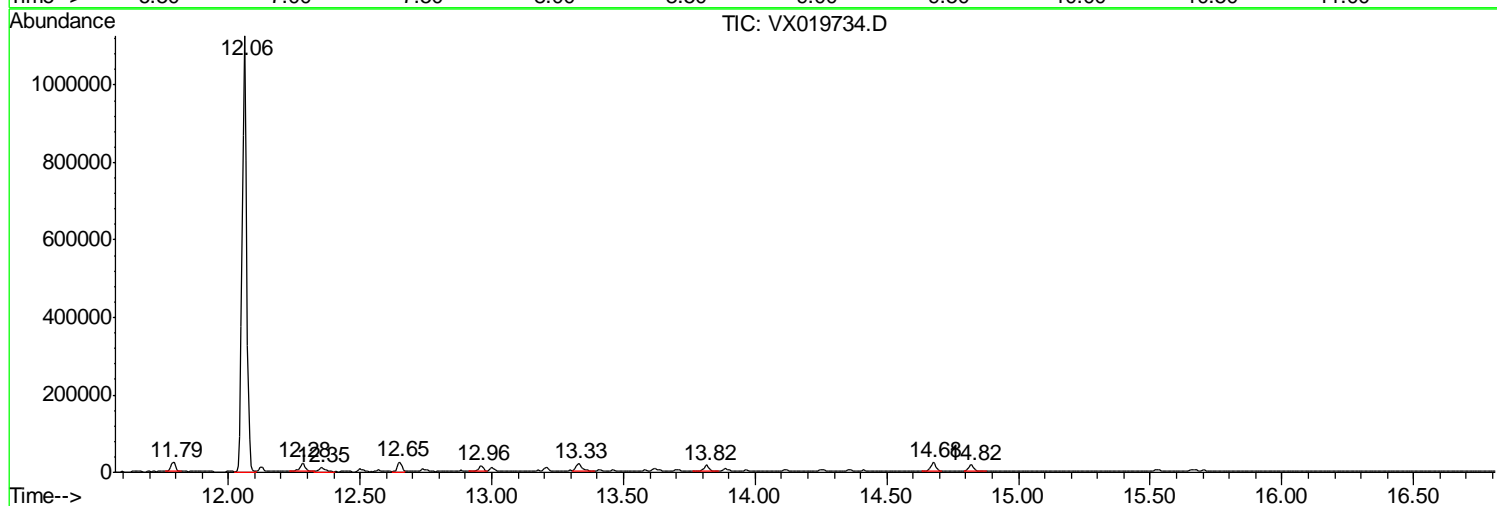
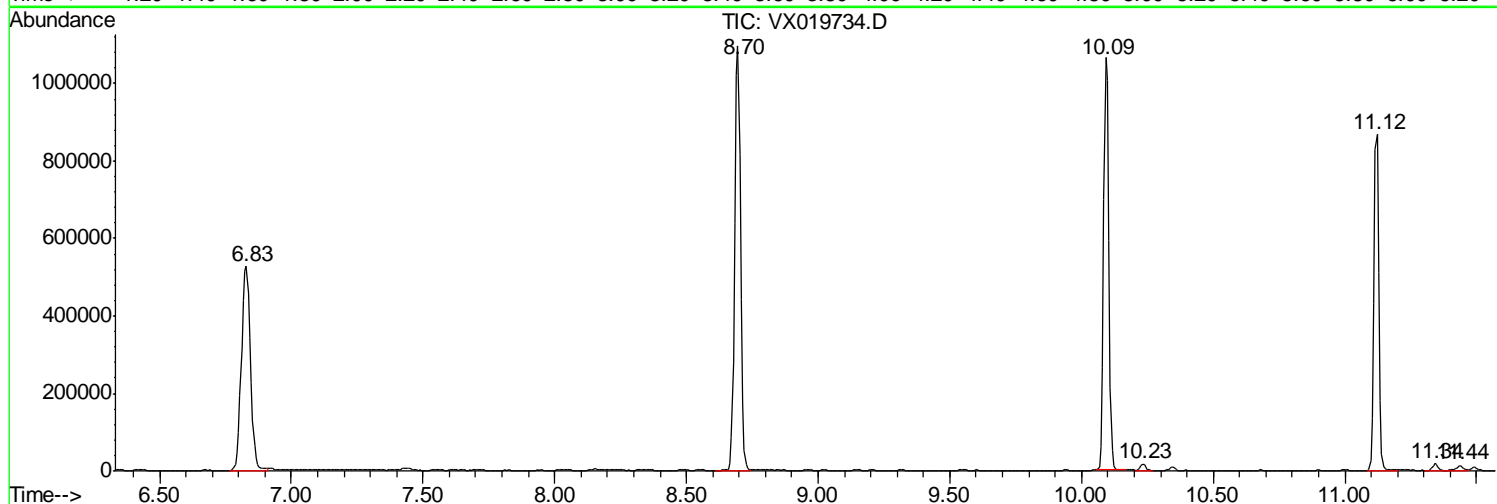
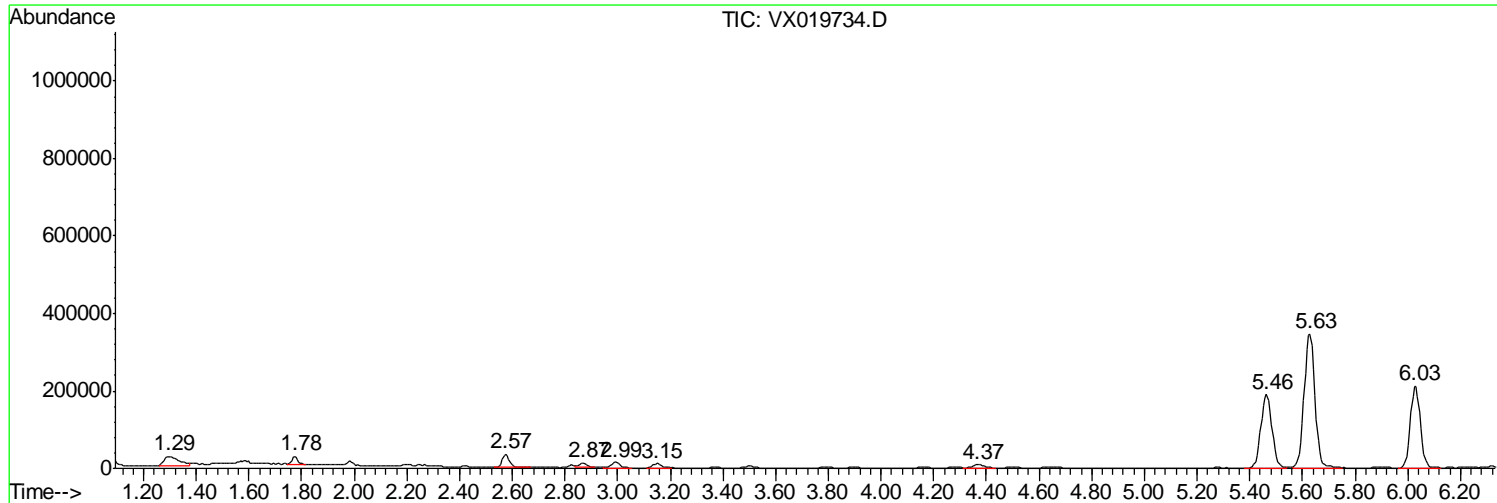
Sum of corrected areas: 9596913

Data Path : Z:\VOASRV\HPCHEM1\MSVOA X\DATA\VX120420\
 Data File : VX019734.D
 Acq On : 04 Dec 2020 22:00
 Operator : JC/MD
 Sample : L4953-01
 Misc : 5.0mL/MSVOA X/WATER
 ALS Vial : 27 Sample Multiplier: 1

Instrument :
 MSVOA_X
ClientSampleID :
 ID039-39MWE1D-120220

Quant Method : Z:\VOASRV\HPCHEM1\MSVOA_X\METHOD\82X120420W.M
 Quant Title : SW846 8260

TIC Library : C:\DATABASE\NIST11.L
 TIC Integration Parameters: LSCINT.P



Data Path : Z:\VOASRV\HPCHEM1\MSVOA_X\DATA\VX120420\
Data File : VX019734.D
Acq On : 04 Dec 2020 22:00
Operator : JC/MD
Sample : L4953-01
Misc : 5.0mL/MSVOA_X/WATER
ALS Vial : 27 Sample Multiplier: 1

Instrument :
MSVOA_X
ClientSampleId :
ID039-39MWE1D-120220

Quant Method : Z:\VOASRV\HPCHEM1\MSVOA_X\METHOD\82X120420W.M
Quant Title : SW846 8260

TIC Library : C:\DATABASE\NIST11.L
TIC Integration Parameters: LSCINT.P

No Library Search Compounds Detected

Data Path : Z:\VOASRV\HPCHEM1\MSVOA_X\DATA\VX120420\
Data File : VX019734.D
Acq On : 04 Dec 2020 22:00
Operator : JC/MD
Sample : L4953-01
Misc : 5.0mL/MSVOA_X/WATER
ALS Vial : 27 Sample Multiplier: 1

Instrument :
MSVOA_X
ClientSampleID :
ID039-39MWE1D-120220

Quant Method : Z:\VOASRV\HPCHEM1\MSVOA_X\METHOD\82X120420W.M
Quant Title : SW846 8260

TIC Library : C:\DATABASE\NIST11.L
TIC Integration Parameters: LSCINT.P

TIC Top Hit name	RT	EstConc	Units	Response	--Internal Standard--			
					#	RT	Resp	Conc
