

Data Path : Z:\VOASRV\HPCHEM1\MSVOA X\DATA\VX120518\  
 Data File : VX006295.D  
 Acq On : 05 Dec 2018 12:51  
 Operator : JC/MD  
 Sample : J6210-05ME  
 Misc : 6.22µ/5mL/100uL/5.0mL/MSVOA\_X/MEOH  
 ALS Vial : 7 Sample Multiplier: 1

Instrument :  
 MSVOA\_X  
 ClientSampleId :  
 WC-9(4.5)ME

Quant Time: Dec 06 00:35:49 2018  
 Quant Method : Z:\VOASRV\HPCHEM1\MSVOA\_X\METHOD\82X112918W.M  
 Quant Title : SW846 8260  
 QLast Update : Fri Nov 30 03:55:33 2018  
 Response via : Initial Calibration

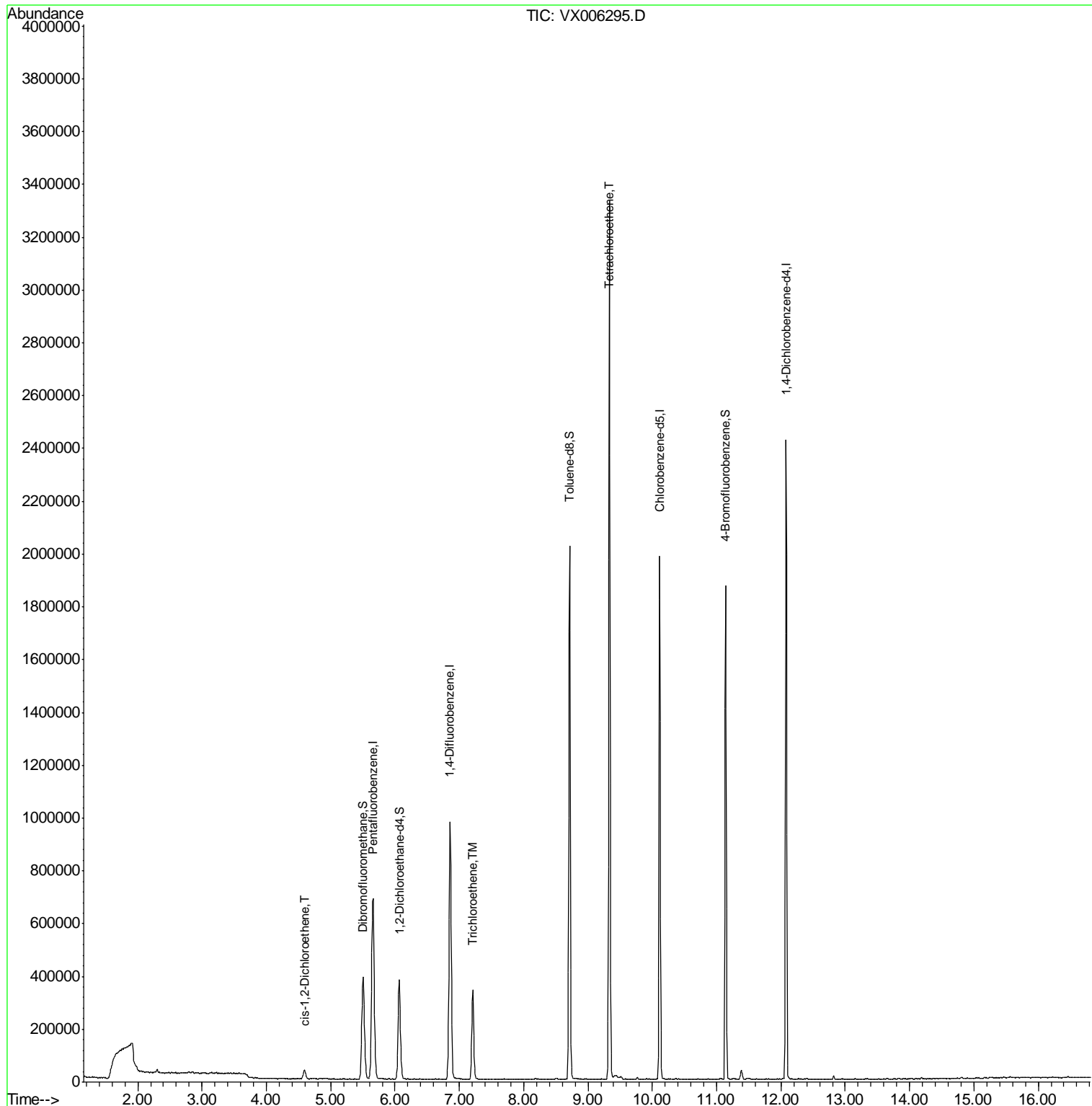
| Internal Standards          | R.T.   | QIon | Response | Conc   | Units   | Dev(Min) |
|-----------------------------|--------|------|----------|--------|---------|----------|
| 1) Pentafluorobenzene       | 5.66   | 168  | 724707   | 50.00  | µg/l    | 0.00     |
| 34) 1,4-Difluorobenzene     | 6.86   | 114  | 1084313  | 50.00  | µg/l    | 0.00     |
| 63) Chlorobenzene-d5        | 10.12  | 117  | 991992   | 50.00  | µg/l    | 0.00     |
| 72) 1,4-Dichlorobenzene-d4  | 12.08  | 152  | 525853   | 50.00  | µg/l    | 0.00     |
| System Monitoring Compounds |        |      |          |        |         |          |
| 33) 1,2-Dichloroethane-d4   | 6.07   | 65   | 353186   | 47.74  | µg/l    | 0.00     |
| Spiked Amount               | 50.000 |      | Recovery | =      | 95.48%  |          |
| 35) Dibromofluoromethane    | 5.50   | 113  | 339834   | 48.41  | µg/l    | 0.00     |
| Spiked Amount               | 50.000 |      | Recovery | =      | 96.82%  |          |
| 50) Toluene-d8              | 8.71   | 98   | 1249929  | 48.95  | µg/l    | 0.00     |
| Spiked Amount               | 50.000 |      | Recovery | =      | 97.90%  |          |
| 62) 4-Bromofluorobenzene    | 11.14  | 95   | 484985   | 50.40  | µg/l    | 0.00     |
| Spiked Amount               | 50.000 |      | Recovery | =      | 100.80% |          |
| Target Compounds            |        |      |          |        |         |          |
| 27) cis-1,2-Dichloroethene  | 4.59   | 96   | 23447    | 3.008  | µg/l    | 87       |
| 44) Trichloroethene         | 7.21   | 130  | 141491   | 17.078 | µg/l    | 96       |
| 64) Tetrachloroethene       | 9.34   | 164  | 689436   | 92.287 | µg/l    | 99       |

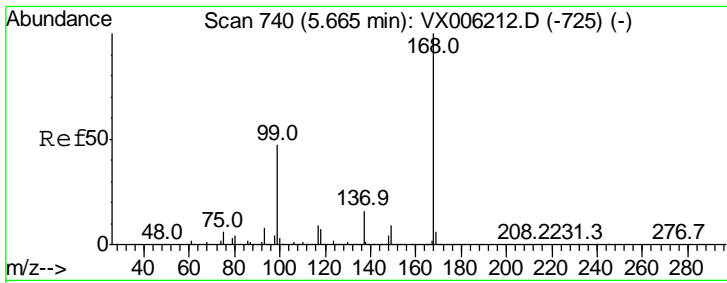
(#) = qualifier out of range (m) = manual integration (+) = signals summed

Data Path : Z:\VOASRV\HPCHEM1\MSVOA X\DATA\VX120518\  
 Data File : VX006295.D  
 Acq On : 05 Dec 2018 12:51  
 Operator : JC/MD  
 Sample : J6210-05ME  
 Misc : 6.22µ/5mL/100uL/5.0mL/MSVOA\_X/MEOH  
 ALS Vial : 7 Sample Multiplier: 1

Instrument :  
 MSVOA\_X  
 ClientSampleId :  
 WC-9(4.5)ME

Quant Time: Dec 06 00:35:49 2018  
 Quant Method : Z:\VOASRV\HPCHEM1\MSVOA\_X\METHOD\82X112918W.M  
 Quant Title : SW846 8260  
 QLast Update : Fri Nov 30 03:55:33 2018  
 Response via : Initial Calibration

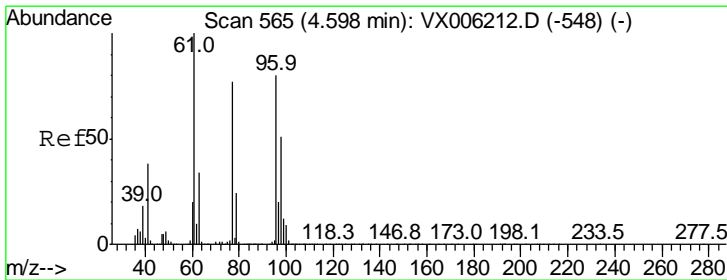
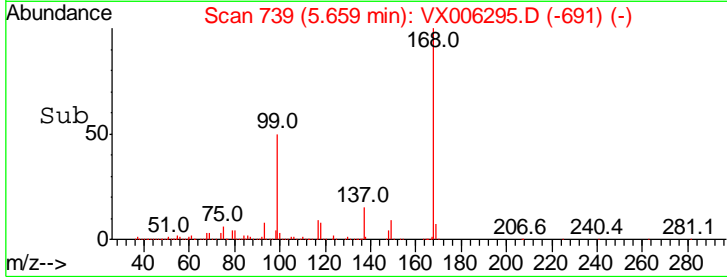
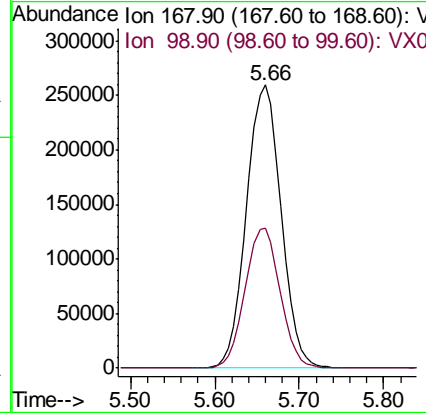
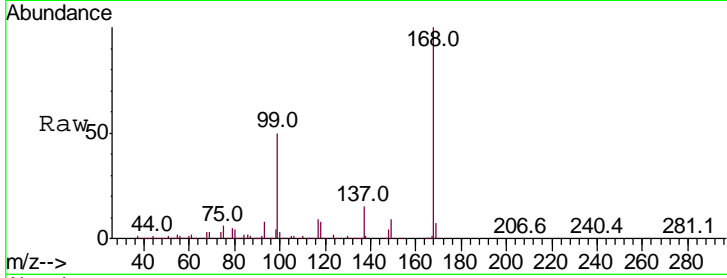




#1  
 Pentafluorobenzene  
 Concen: 50.000 ug/l  
 RT: 5.66 min Scan# 739  
 Delta R.T. -0.01 min  
 Lab File: VX006295.D  
 Acq: 05 Dec 2018 12:51

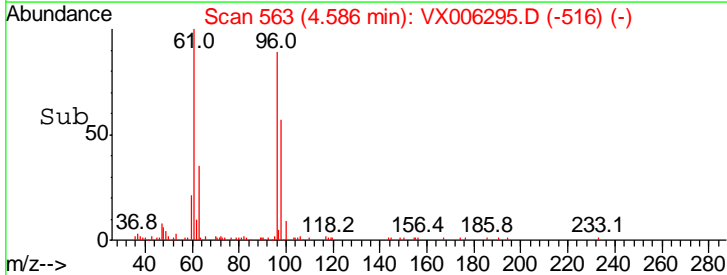
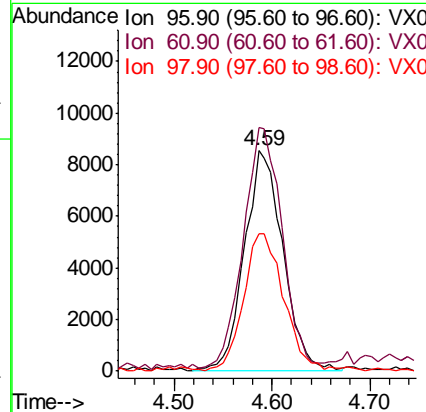
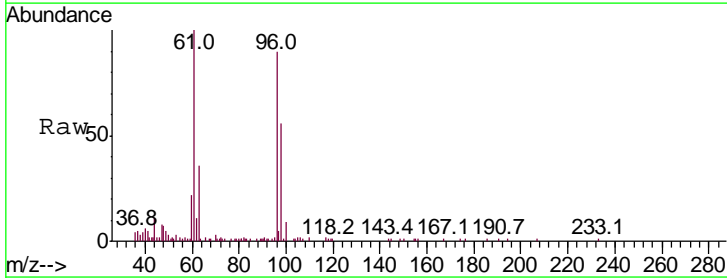
Instrument :  
 MSVOA\_X  
 ClientSampleId :  
 WC-9(4.5)ME

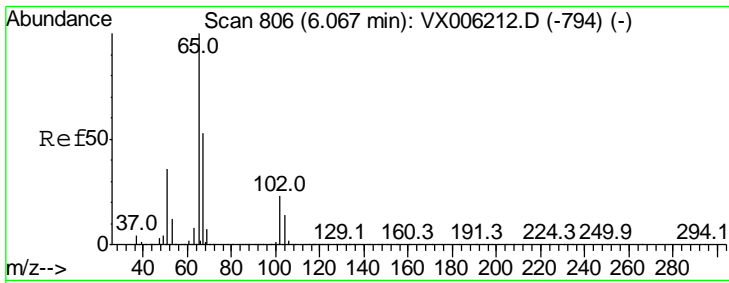
| Tgt Ion | Resp | Lower | Upper |
|---------|------|-------|-------|
| 168     | 100  |       |       |
| 99      | 49.6 | 37.8  | 56.8  |



#27  
 cis-1,2-Dichloroethene  
 Concen: 3.008 ug/l  
 RT: 4.59 min Scan# 563  
 Delta R.T. -0.01 min  
 Lab File: VX006295.D  
 Acq: 05 Dec 2018 12:51

| Tgt Ion | Resp  | Lower | Upper |
|---------|-------|-------|-------|
| 96      | 100   |       |       |
| 61      | 109.9 | 0.0   | 265.0 |
| 98      | 65.0  | 0.0   | 130.2 |

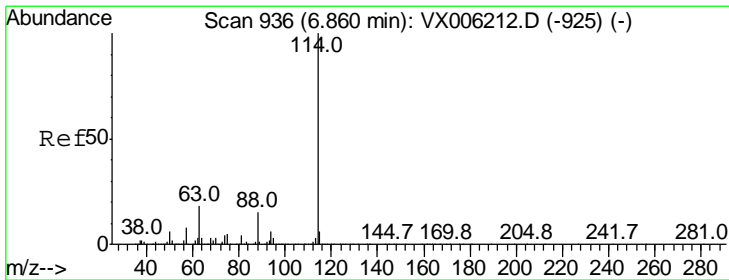
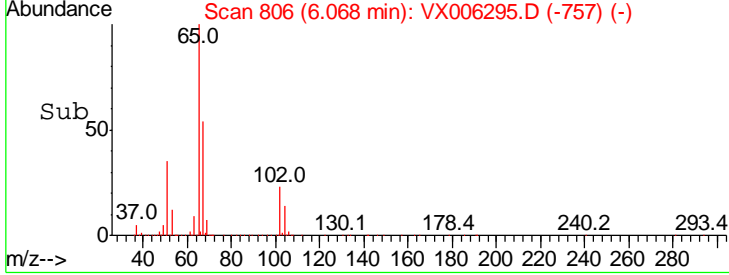
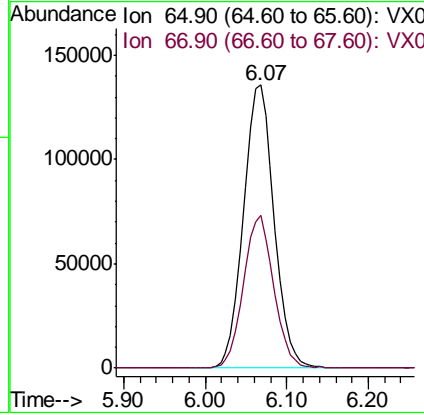
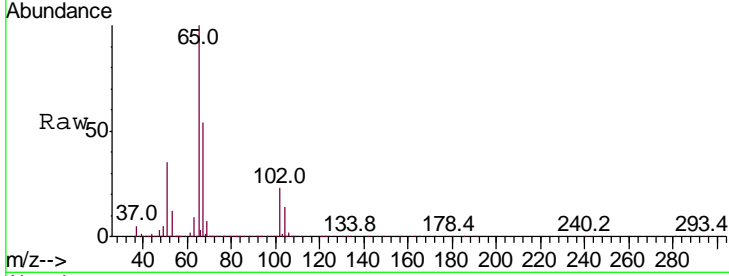




#33  
 1,2-Dichloroethane-d4  
 Concen: 47.740 ug/l  
 RT: 6.07 min Scan# 806  
 Delta R.T. 0.00 min  
 Lab File: VX006295.D  
 Acq: 05 Dec 2018 12:51

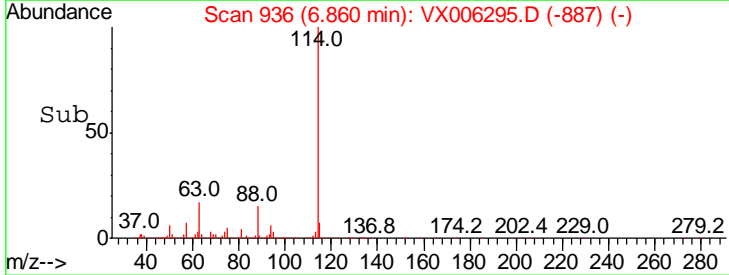
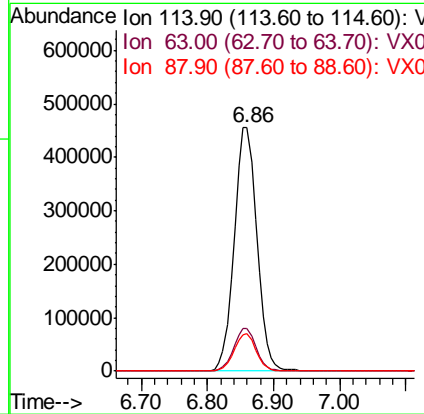
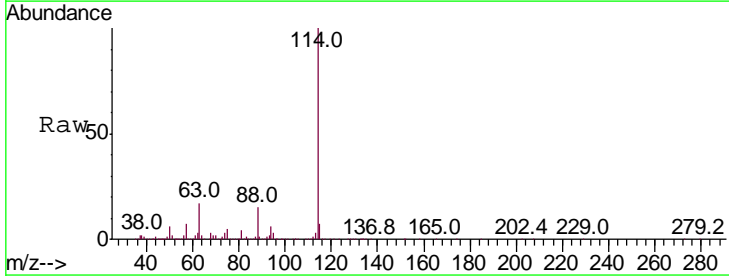
Instrument :  
 MSVOA\_X  
 ClientSampled :  
 WC-9(4.5)ME

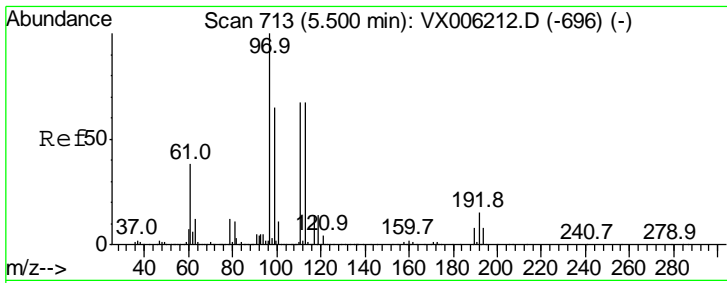
| Tgt Ion | Resp | Lower | Upper |
|---------|------|-------|-------|
| 65      | 100  |       |       |
| 67      | 53.4 | 0.0   | 107.2 |



#34  
 1,4-Difluorobenzene  
 Concen: 50.000 ug/l  
 RT: 6.86 min Scan# 936  
 Delta R.T. 0.00 min  
 Lab File: VX006295.D  
 Acq: 05 Dec 2018 12:51

| Tgt Ion | Resp | Lower | Upper |
|---------|------|-------|-------|
| 114     | 100  |       |       |
| 63      | 17.3 | 0.0   | 36.6  |
| 88      | 15.4 | 0.0   | 29.0  |

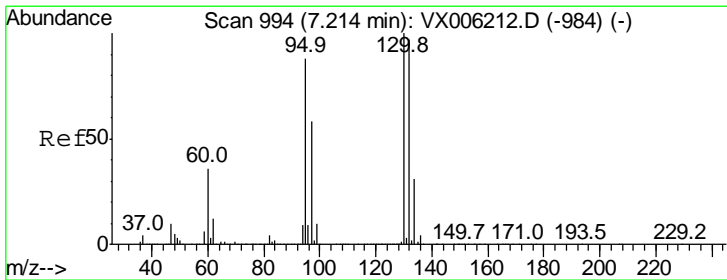
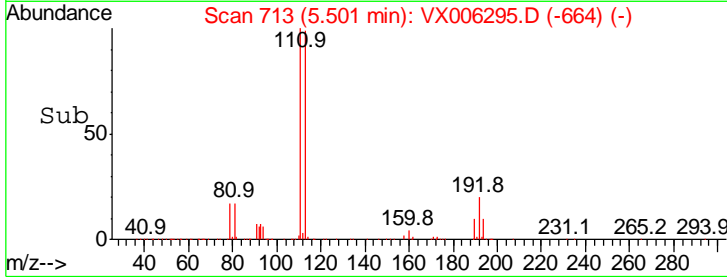
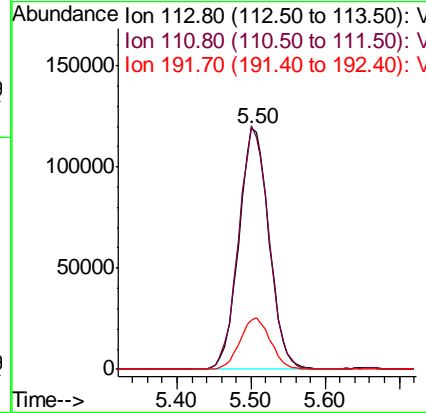
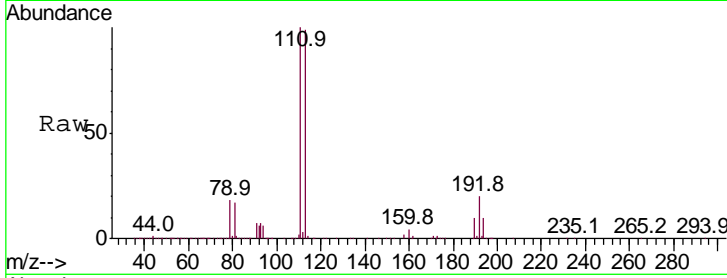




#35  
 Dibromofluoromethane  
 Concen: 48.406 ug/l  
 RT: 5.50 min Scan# 713  
 Delta R.T. 0.00 min  
 Lab File: VX006295.D  
 Acq: 05 Dec 2018 12:51

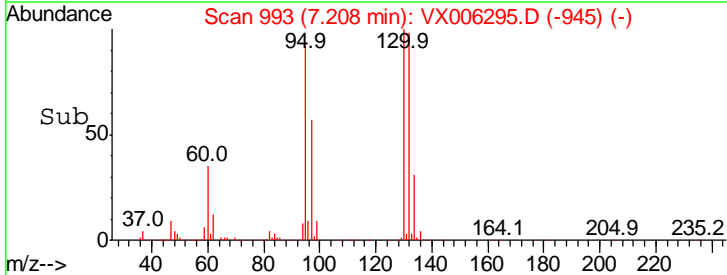
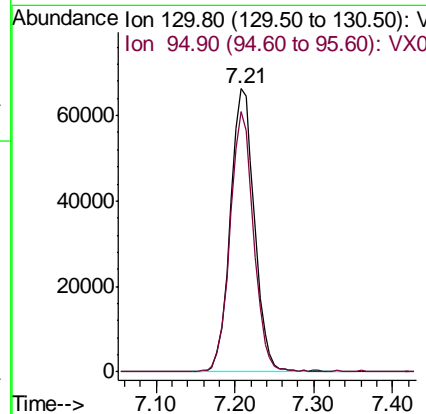
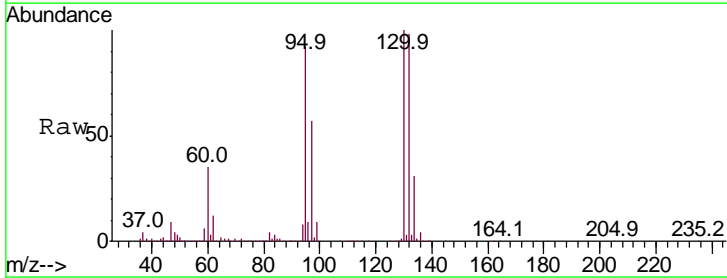
Instrument :  
 MSVOA\_X  
 ClientSampled :  
 WC-9(4.5)ME

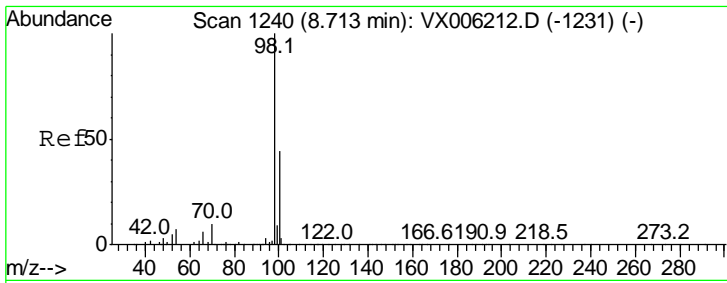
| Tgt Ion | Resp   | Lower | Upper |
|---------|--------|-------|-------|
| 113     | 339834 |       |       |
| 113     | 100    |       |       |
| 111     | 100.4  | 81.1  | 121.7 |
| 192     | 21.5   | 18.2  | 27.2  |



#44  
 Trichloroethene  
 Concen: 17.078 ug/l  
 RT: 7.21 min Scan# 993  
 Delta R.T. -0.01 min  
 Lab File: VX006295.D  
 Acq: 05 Dec 2018 12:51

| Tgt Ion | Resp   | Lower | Upper |
|---------|--------|-------|-------|
| 130     | 141491 |       |       |
| 130     | 100    |       |       |
| 95      | 91.9   | 0.0   | 175.8 |

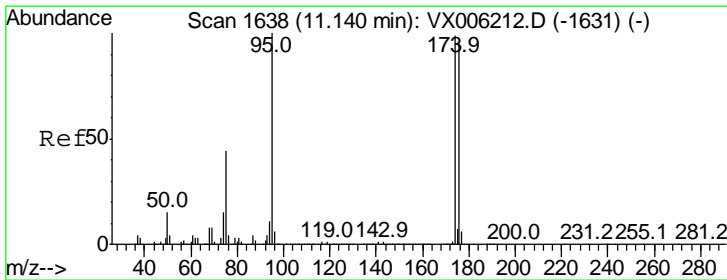
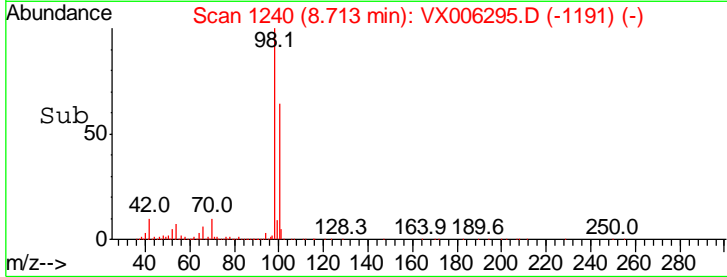
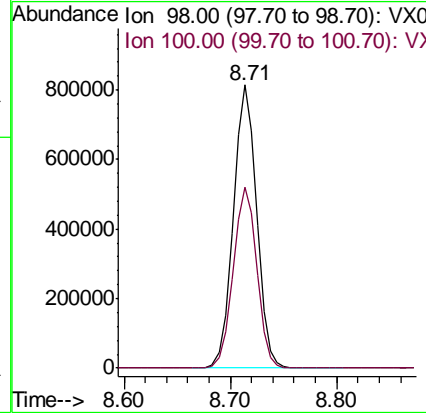
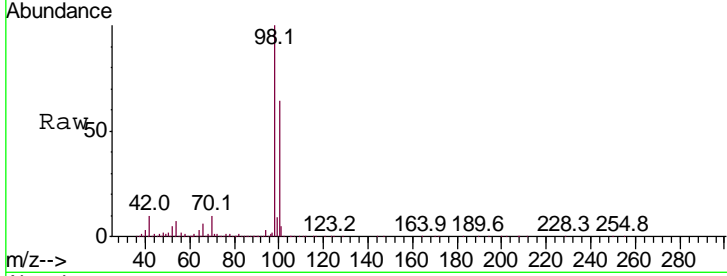




#50  
 Toluene-d8  
 Concen: 48.947 ug/l  
 RT: 8.71 min Scan# 1240  
 Delta R.T. 0.00 min  
 Lab File: VX006295.D  
 Acq: 05 Dec 2018 12:51

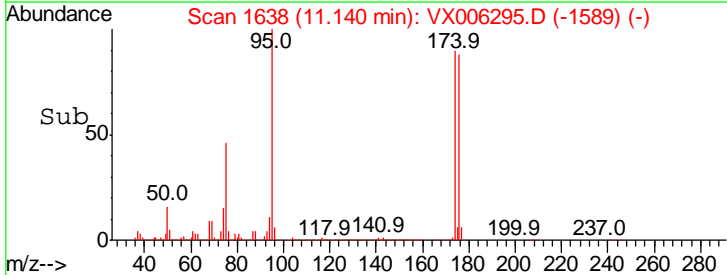
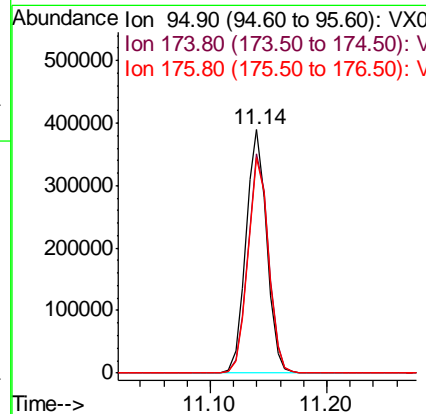
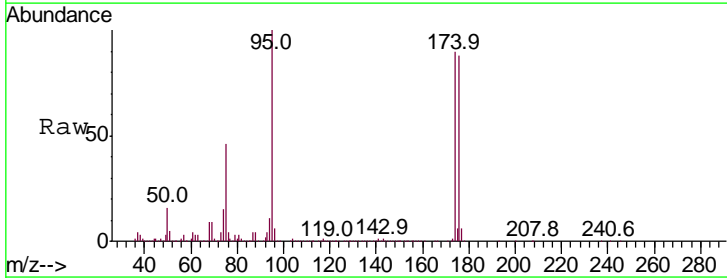
Instrument :  
 MSVOA\_X  
 ClientSampled :  
 WC-9(4.5)ME

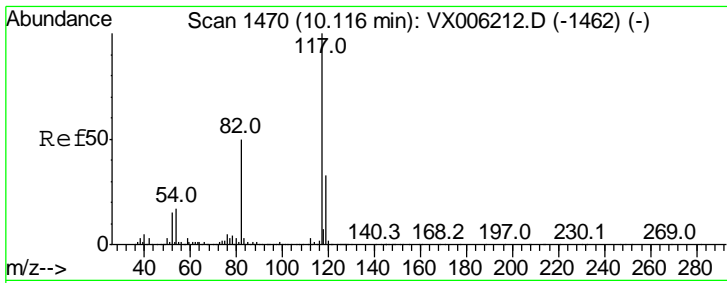
Tgt Ion: 98 Resp: 1249929  
 Ion Ratio Lower Upper  
 98 100  
 100 64.7 52.2 78.2



#62  
 4-Bromofluorobenzene  
 Concen: 50.399 ug/l  
 RT: 11.14 min Scan# 1638  
 Delta R.T. 0.00 min  
 Lab File: VX006295.D  
 Acq: 05 Dec 2018 12:51

Tgt Ion: 95 Resp: 484985  
 Ion Ratio Lower Upper  
 95 100  
 174 90.2 0.0 187.0  
 176 88.4 0.0 181.8

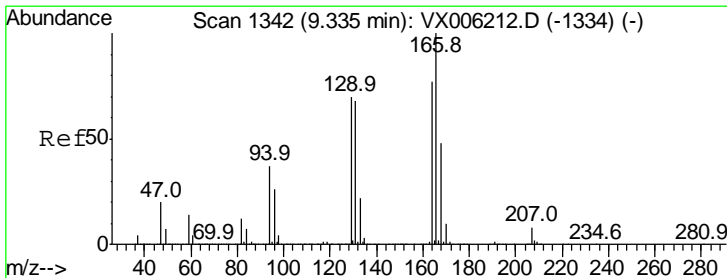
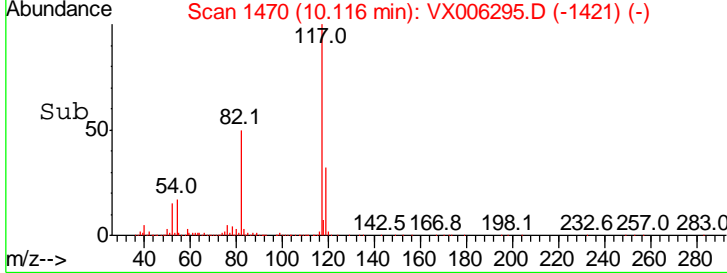
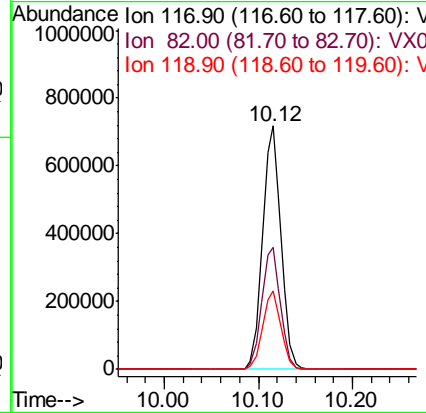
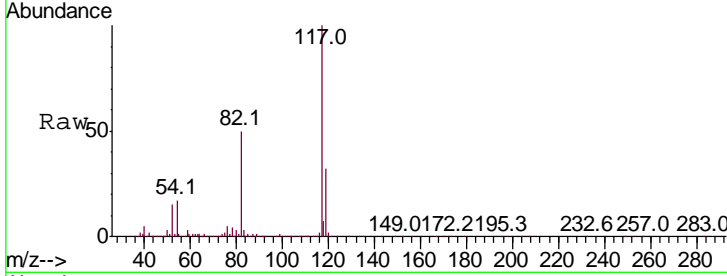




#63  
 Chlorobenzene-d5  
 Concen: 50.000 ug/l  
 RT: 10.12 min Scan# 1470  
 Delta R.T. 0.00 min  
 Lab File: VX006295.D  
 Acq: 05 Dec 2018 12:51

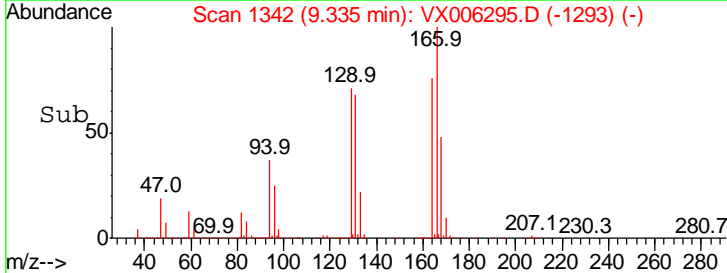
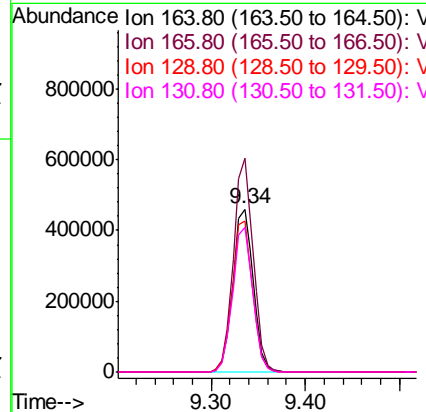
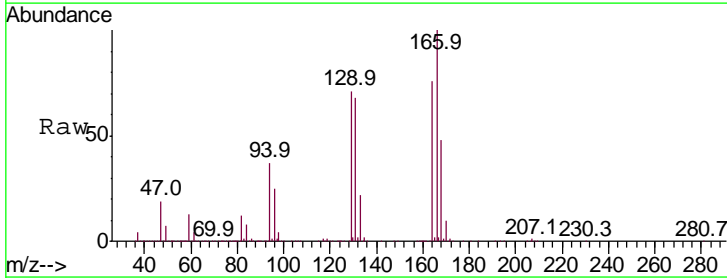
Instrument :  
 MSVOA\_X  
 ClientSampled :  
 WC-9(4.5)ME

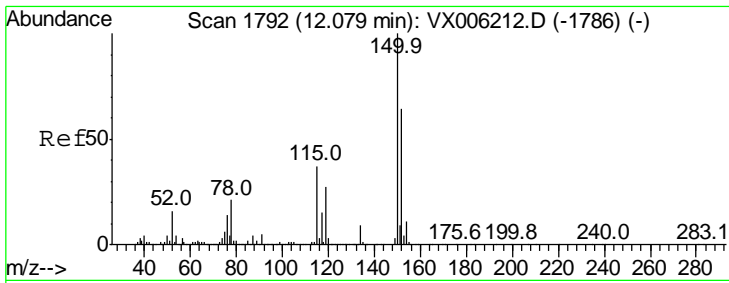
| Tgt Ion | Resp | Lower | Upper |
|---------|------|-------|-------|
| 117     | 100  |       |       |
| 82      | 50.3 | 39.6  | 59.4  |
| 119     | 32.3 | 26.3  | 39.5  |



#64  
 Tetrachloroethene  
 Concen: 92.287 ug/l  
 RT: 9.34 min Scan# 1342  
 Delta R.T. 0.00 min  
 Lab File: VX006295.D  
 Acq: 05 Dec 2018 12:51

| Tgt Ion | Resp  | Lower | Upper |
|---------|-------|-------|-------|
| 164     | 100   |       |       |
| 166     | 131.0 | 104.2 | 156.2 |
| 129     | 92.9  | 72.6  | 108.8 |
| 131     | 89.0  | 70.3  | 105.5 |





#72  
 1,4-Dichlorobenzene-d4  
 Concen: 50.000 ug/l  
 RT: 12.08 min Scan# 1792  
 Delta R.T. 0.00 min  
 Lab File: VX006295.D  
 Acq: 05 Dec 2018 12:51

Instrument :  
 MSVOA\_X  
 ClientSampleId :  
 WC-9(4.5)ME

| Tot Ion | Resp  | Lower | Upper |
|---------|-------|-------|-------|
| 152     | 100   |       |       |
| 115     | 55.1  | 39.0  | 116.9 |
| 150     | 157.9 | 0.0   | 345.8 |

