

Data Path : Z:\VOASRV\HPCHEM1\MSVOA X\DATA\VX120518\
 Data File : VX006297.D
 Acq On : 05 Dec 2018 13:44
 Operator : JC/MD
 Sample : J6214-33
 Misc : 5.0mL/MSVOA X/WATER
 ALS Vial : 9 Sample Multiplier: 1

Instrument :
 MSVOA_X
 ClientSampleId :
 TW-4

Quant Time: Dec 06 00:41:57 2018
 Quant Method : Z:\VOASRV\HPCHEM1\MSVOA_X\METHOD\82X112918W.M
 Quant Title : SW846 8260
 QLast Update : Fri Nov 30 03:55:33 2018
 Response via : Initial Calibration

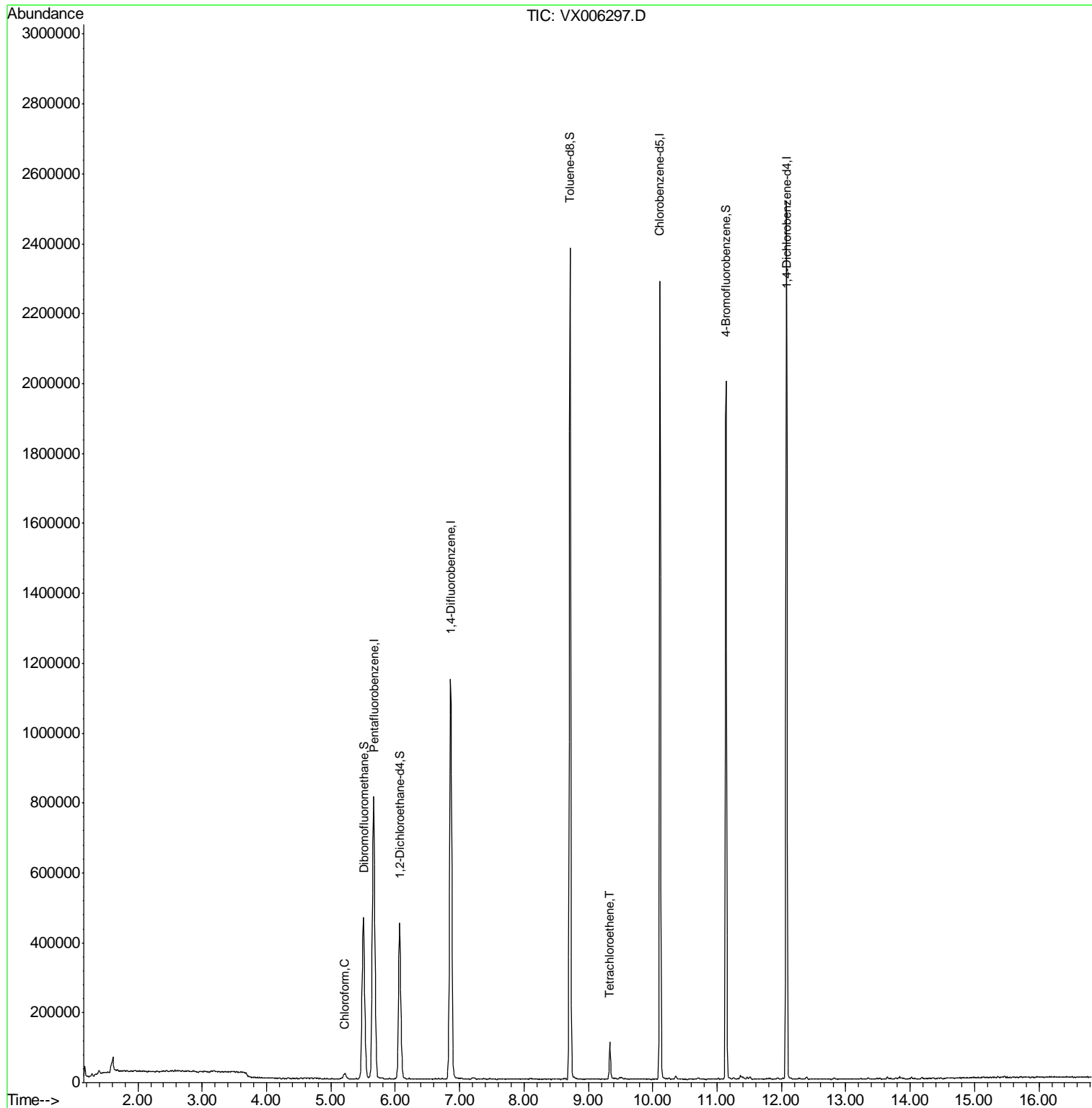
Internal Standards	R.T.	QIon	Response	Conc	Units	Dev(Min)
1) Pentafluorobenzene	5.66	168	841342	50.00	ug/l	0.00
34) 1,4-Difluorobenzene	6.86	114	1265711	50.00	ug/l	0.00
63) Chlorobenzene-d5	10.12	117	1141269	50.00	ug/l	0.00
72) 1,4-Dichlorobenzene-d4	12.08	152	554103	50.00	ug/l	0.00
System Monitoring Compounds						
33) 1,2-Dichloroethane-d4	6.07	65	411462	47.91	ug/l	0.00
Spiked Amount	50.000		Recovery	=	95.82%	
35) Dibromofluoromethane	5.51	113	397709	48.53	ug/l	0.00
Spiked Amount	50.000		Recovery	=	97.06%	
50) Toluene-d8	8.71	98	1476629	49.54	ug/l	0.00
Spiked Amount	50.000		Recovery	=	99.08%	
62) 4-Bromofluorobenzene	11.14	95	540861	48.15	ug/l	0.00
Spiked Amount	50.000		Recovery	=	96.30%	
Target Compounds						
30) Chloroform	5.22	83	18480	1.310	ug/l	87
64) Tetrachloroethene	9.33	164	20625	2.400	ug/l	94

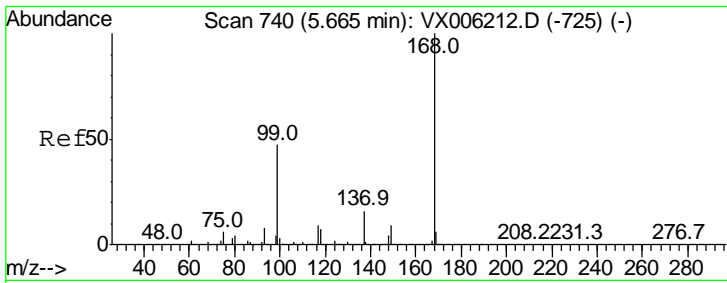
(#) = qualifier out of range (m) = manual integration (+) = signals summed

Data Path : Z:\VOASRV\HPCHEM1\MSVOA X\DATA\VX120518\
Data File : VX006297.D
Acq On : 05 Dec 2018 13:44
Operator : JC/MD
Sample : J6214-33
Misc : 5.0mL/MSVOA X/WATER
ALS Vial : 9 Sample Multiplier: 1

Instrument :
MSVOA_X
Client Sampled :
TW-4

Quant Time: Dec 06 00:41:57 2018
Quant Method : Z:\VOASRV\HPCHEM1\MSVOA_X\METHOD\82X112918W.M
Quant Title : SW846 8260
QLast Update : Fri Nov 30 03:55:33 2018
Response via : Initial Calibration

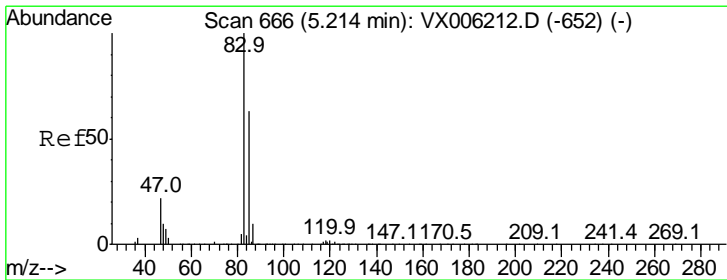
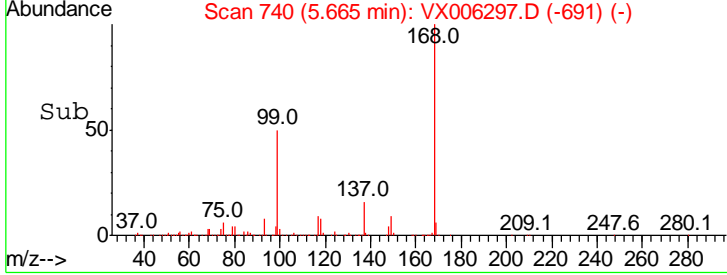
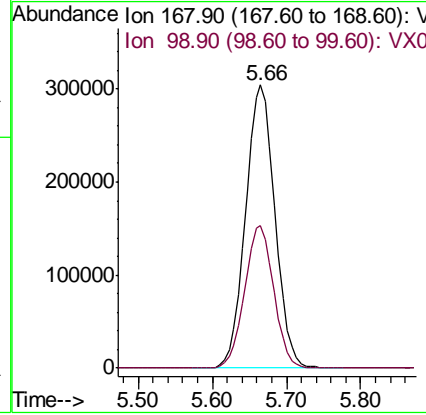
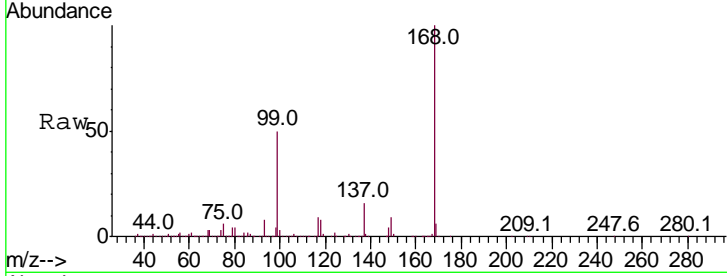




#1
 Pentafluorobenzene
 Concen: 50.000 ug/l
 RT: 5.66 min Scan# 740
 Delta R.T. -0.00 min
 Lab File: VX006297.D
 Acq: 05 Dec 2018 13:44

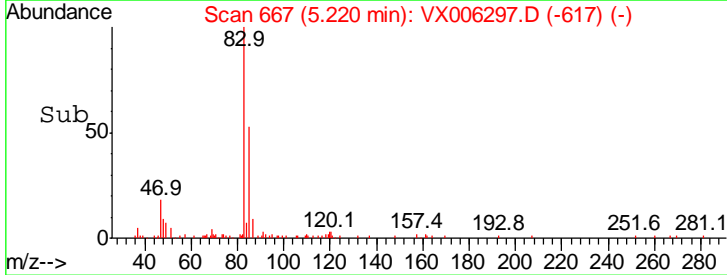
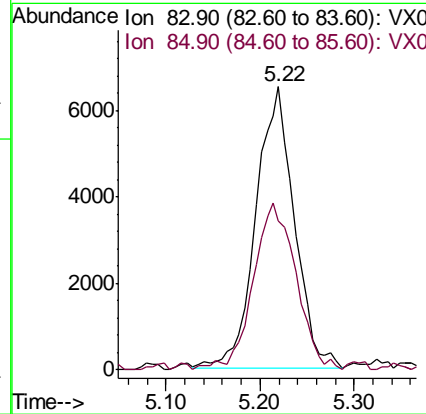
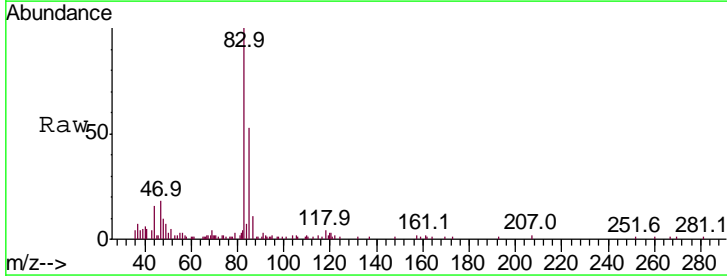
Instrument : MSVOA_X
 Client Sampled : TW-4

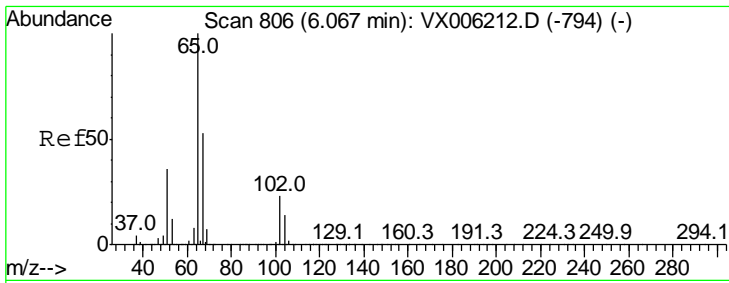
Tgt Ion	Resp	Lower	Upper
168	100		
99	50.3	37.8	56.8



#30
 Chloroform
 Concen: 1.310 ug/l
 RT: 5.22 min Scan# 667
 Delta R.T. 0.01 min
 Lab File: VX006297.D
 Acq: 05 Dec 2018 13:44

Tgt Ion	Resp	Lower	Upper
83	100		
85	53.2	50.3	75.5

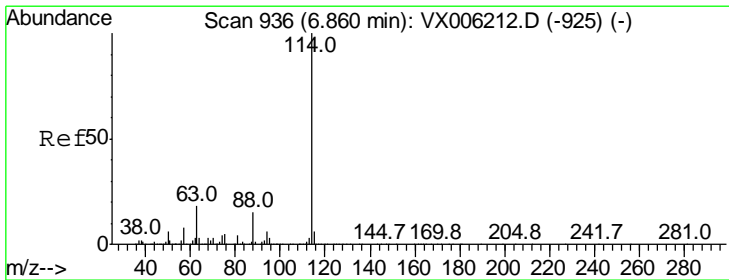
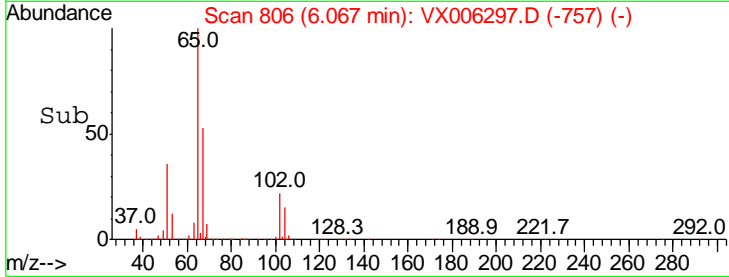
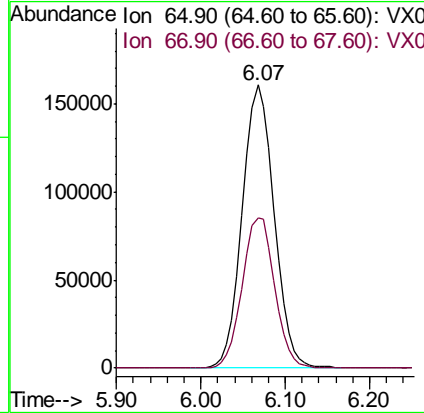
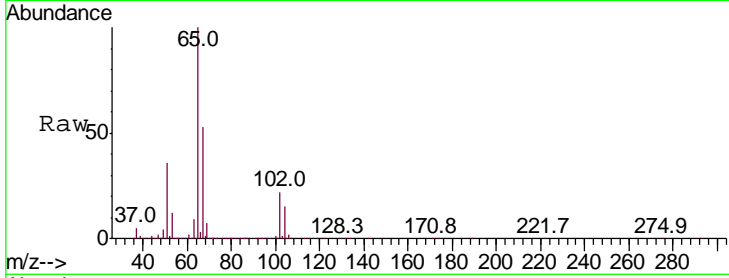




#33
 1,2-Dichloroethane-d4
 Concen: 47.907 ug/l
 RT: 6.07 min Scan# 806
 Delta R.T. -0.00 min
 Lab File: VX006297.D
 Acq: 05 Dec 2018 13:44

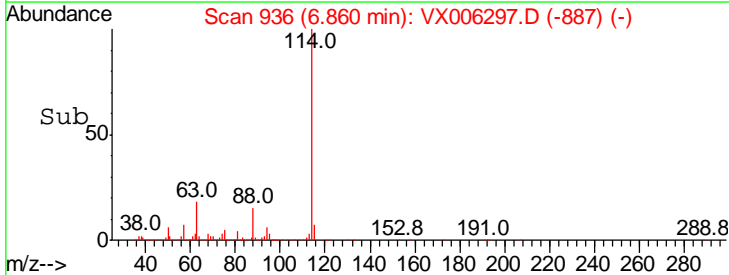
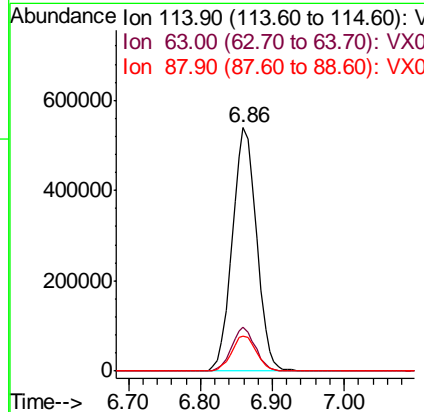
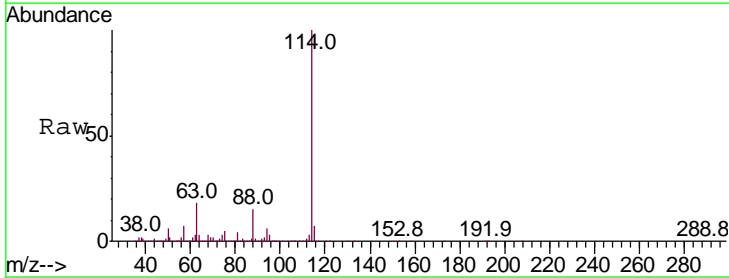
Instrument :
 MSVOA_X
 ClientSampled :
 TW-4

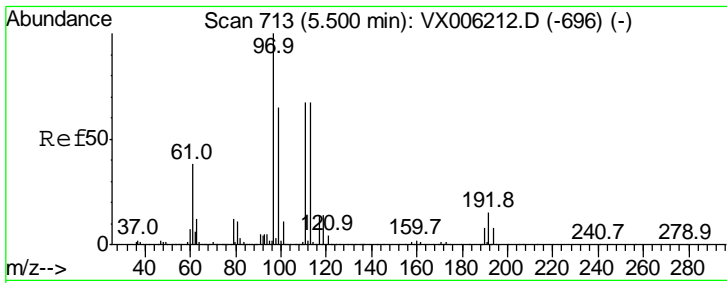
Tgt Ion	Resp	Lower	Upper
65	100		
67	53.9	0.0	107.2



#34
 1,4-Difluorobenzene
 Concen: 50.000 ug/l
 RT: 6.86 min Scan# 936
 Delta R.T. -0.00 min
 Lab File: VX006297.D
 Acq: 05 Dec 2018 13:44

Tgt Ion	Resp	Lower	Upper
114	100		
63	17.8	0.0	36.6
88	14.5	0.0	29.0

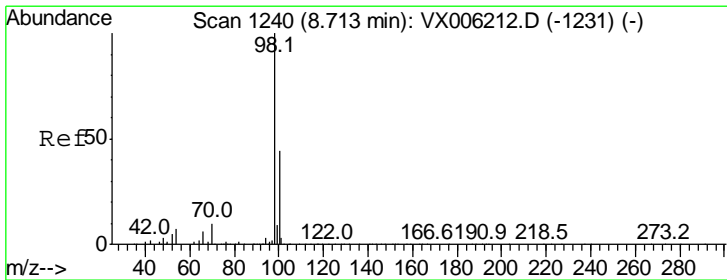
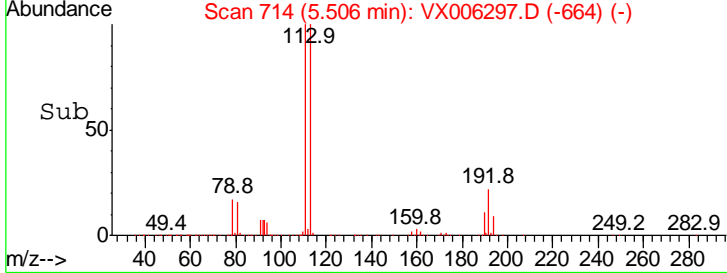
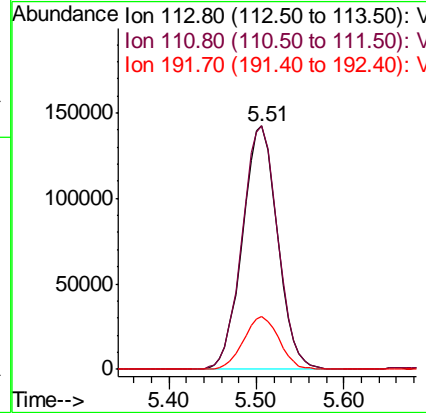
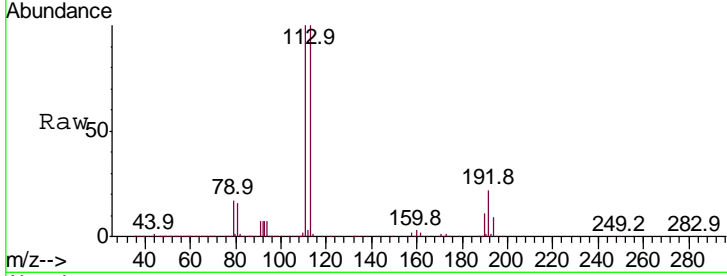




#35
 Dibromofluoromethane
 Concen: 48.531 ug/l
 RT: 5.51 min Scan# 714
 Delta R.T. 0.01 min
 Lab File: VX006297.D
 Acq: 05 Dec 2018 13:44

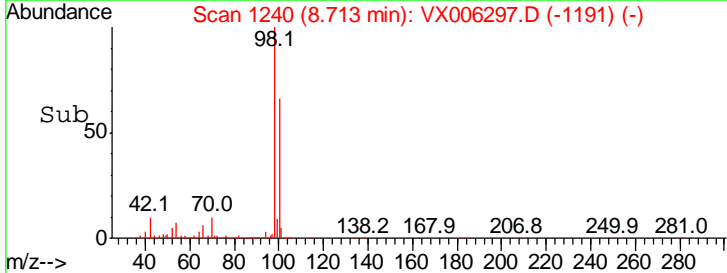
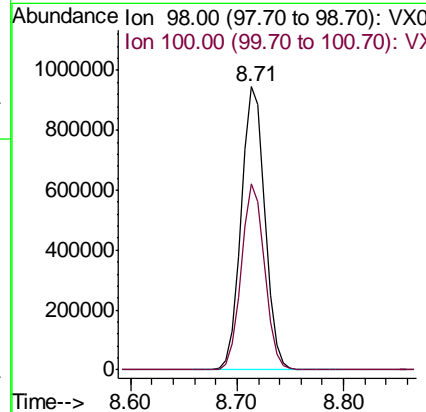
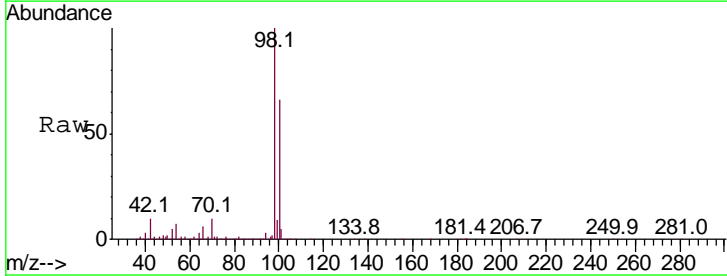
Instrument : MSVOA_X
 ClientSampled : TW-4

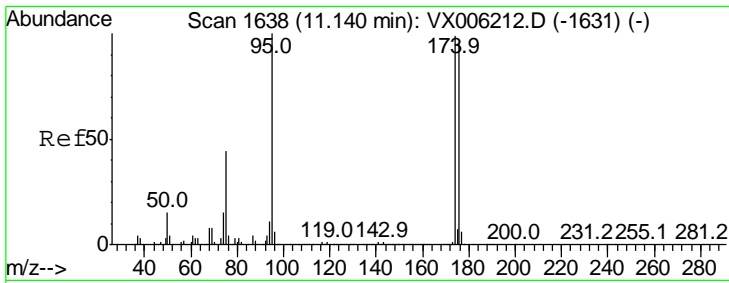
Tgt Ion	Resp	Lower	Upper
113	397709		
111	101.6	81.1	121.7
192	22.0	18.2	27.2



#50
 Toluene-d8
 Concen: 49.537 ug/l
 RT: 8.71 min Scan# 1240
 Delta R.T. -0.00 min
 Lab File: VX006297.D
 Acq: 05 Dec 2018 13:44

Tgt Ion	Resp	Lower	Upper
98	1476629		
100	64.7	52.2	78.2

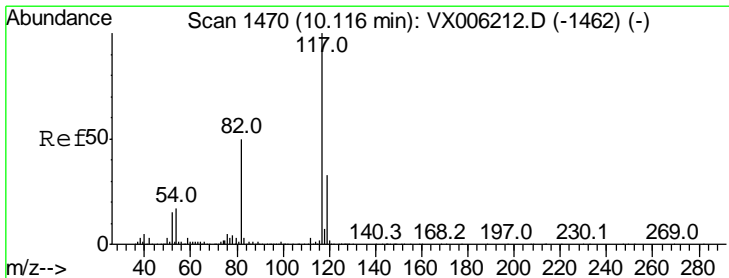
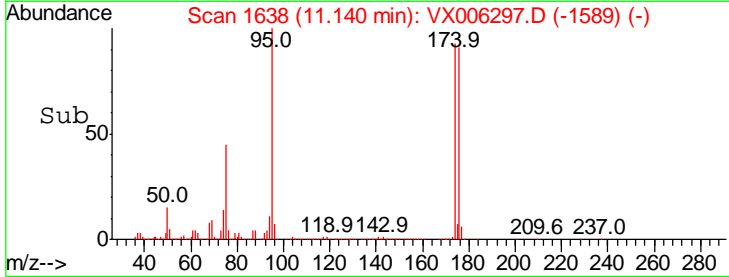
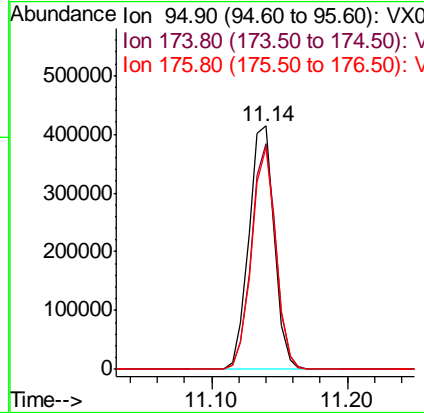
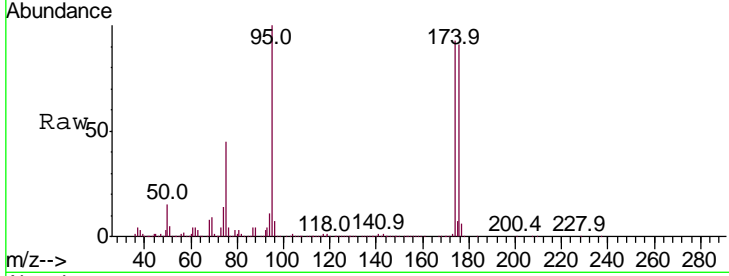




#62
 4-Bromofluorobenzene
 Concen: 48.150 ug/l
 RT: 11.14 min Scan# 1638
 Delta R.T. -0.00 min
 Lab File: VX006297.D
 Acq: 05 Dec 2018 13:44

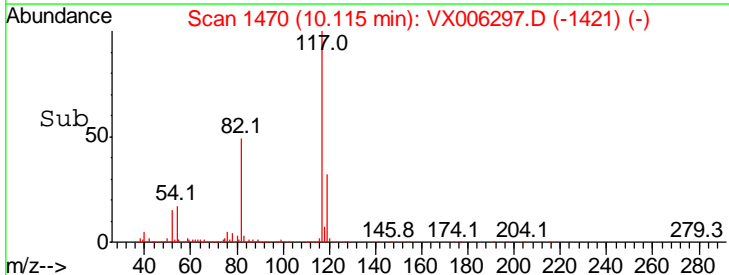
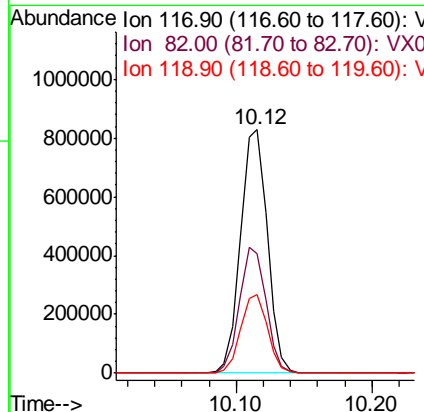
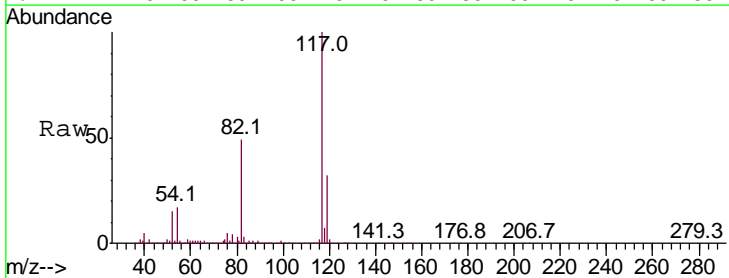
Instrument :
 MSVOA_X
 ClientSampled :
 TW-4

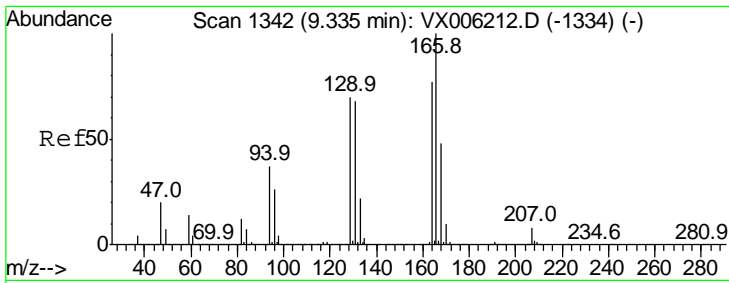
Tgt Ion	Resp	Lower	Upper
95	100		
174	89.4	0.0	187.0
176	87.2	0.0	181.8



#63
 Chlorobenzene-d5
 Concen: 50.000 ug/l
 RT: 10.12 min Scan# 1470
 Delta R.T. -0.00 min
 Lab File: VX006297.D
 Acq: 05 Dec 2018 13:44

Tgt Ion	Resp	Lower	Upper
117	100		
82	49.0	39.6	59.4
119	32.3	26.3	39.5

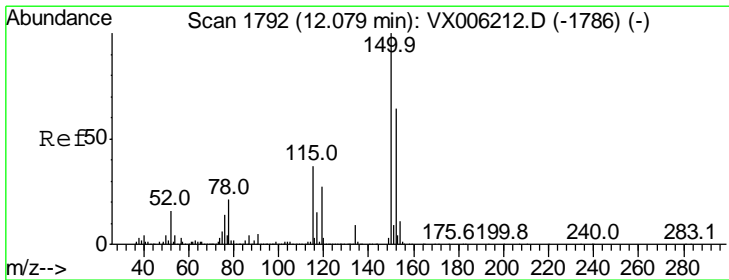
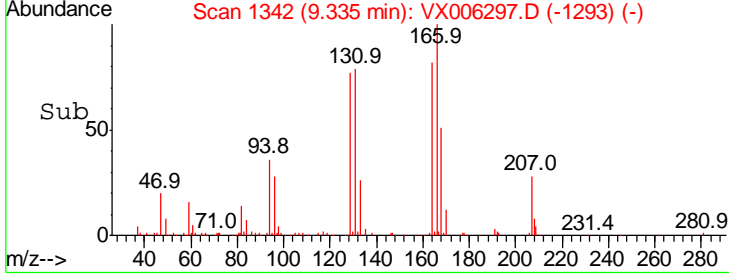
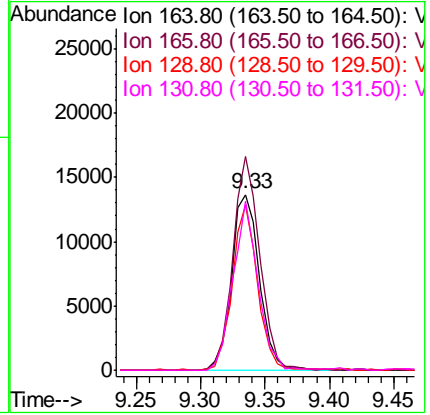
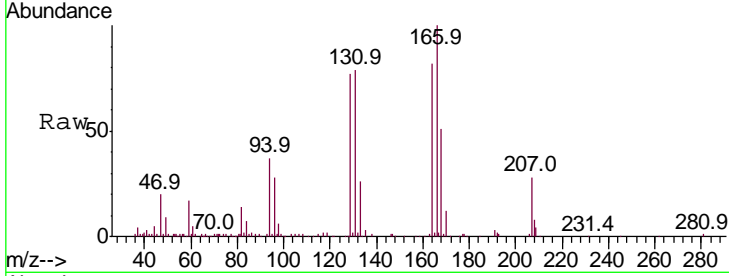




#64
 Tetrachloroethene
 Concen: 2.400 ug/l
 RT: 9.33 min Scan# 1342
 Delta R.T. -0.00 min
 Lab File: VX006297.D
 Acq: 05 Dec 2018 13:44

Instrument :
 MSVOA_X
 ClientSampled :
 TW-4

Tgt Ion	Resp	Lower	Upper
164	100		
166	121.6	104.2	156.2
129	93.2	72.6	108.8
131	95.9	70.3	105.5



#72
 1,4-Dichlorobenzene-d4
 Concen: 50.000 ug/l
 RT: 12.08 min Scan# 1792
 Delta R.T. -0.00 min
 Lab File: VX006297.D
 Acq: 05 Dec 2018 13:44

Tgt Ion	Resp	Lower	Upper
152	100		
115	55.5	39.0	116.9
150	157.5	0.0	345.8

