

Data Path : Z:\voasrv\HPCHEM1\MSVOA_X\Data\VX120522\
 Data File : VX033245.D
 Acq On : 05 Dec 2022 22:45
 Operator : JC/MD
 Sample : N5859-09
 Misc : 5.0mL/MSVOA_X/WATER
 ALS Vial : 30 Sample Multiplier: 1

Instrument :
 MSVOA_X
 ClientSampleId :
 31910

Quant Time: Dec 06 06:03:06 2022
 Quant Method : Z:\voasrv\HPCHEM1\MSVOA_X\Method\82X112222W.M
 Quant Title : SW846 8260
 QLast Update : Tue Nov 22 13:58:46 2022
 Response via : Initial Calibration

Compound	R.T.	QIon	Response	Conc	Units	Dev(Min)

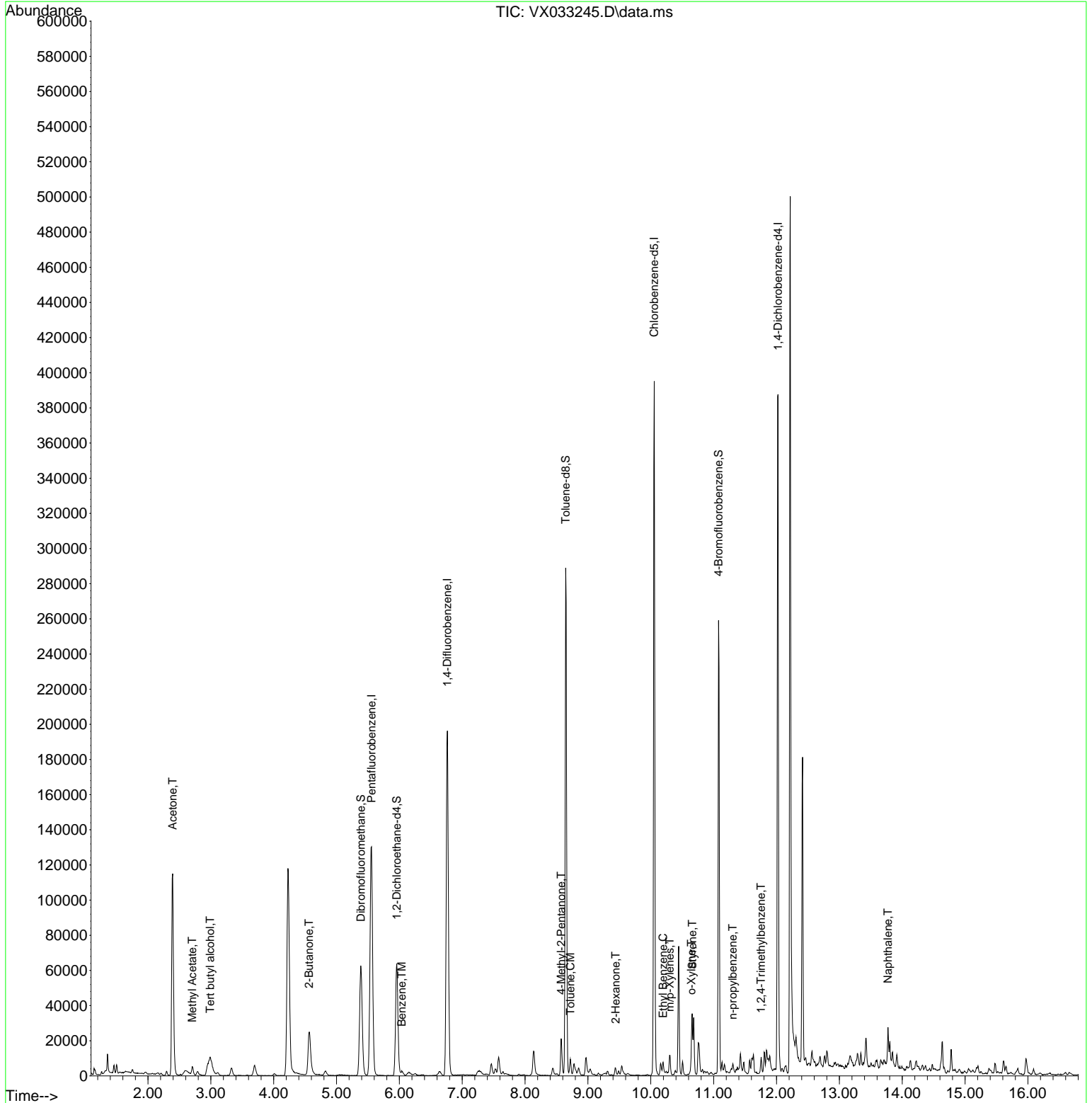
Internal Standards						
1) Pentafluorobenzene	5.556	168	127216	50.000	ug/l	0.00
34) 1,4-Difluorobenzene	6.763	114	204406	50.000	ug/l	0.00
63) Chlorobenzene-d5	10.055	117	176927	50.000	ug/l	0.00
72) 1,4-Dichlorobenzene-d4	12.024	152	83994	50.000	ug/l	0.00
System Monitoring Compounds						
33) 1,2-Dichloroethane-d4	5.958	65	64717	52.199	ug/l	0.00
Spiked Amount	50.000	Range 78 - 117	Recovery	=	104.400%	
35) Dibromofluoromethane	5.385	113	55321	48.006	ug/l	0.00
Spiked Amount	50.000	Range 75 - 124	Recovery	=	96.020%	
50) Toluene-d8	8.647	98	172517	49.745	ug/l	0.00
Spiked Amount	50.000	Range 92 - 112	Recovery	=	99.500%	
62) 4-Bromofluorobenzene	11.079	95	67214	44.402	ug/l	0.00
Spiked Amount	50.000	Range 83 - 123	Recovery	=	88.800%	
Target Compounds						
						Qvalue
11) Tert butyl alcohol	2.989	59	23520	119.762	ug/l	98
16) Acetone	2.392	43	148139	256.036	ug/l	99
18) Methyl Acetate	2.703	43	5345	3.337	ug/l	95
25) 2-Butanone	4.562	43	44224	55.431	ug/l	99
40) Benzene	6.037	78	2781	0.538	ug/l	100
51) 4-Methyl-2-Pentanone	8.574	43	12714	7.750	ug/l	97
52) Toluene	8.720	92	3100	0.912	ug/l	100
59) 2-Hexanone	9.439	43	2596	2.142	ug/l	87
67) Ethyl Benzene	10.195	91	4034	0.645	ug/l	95
68) m/p-Xylenes	10.299	106	2667	1.088	ug/l	96
69) o-Xylene	10.646	106	1075	0.453	ug/l	94
70) Styrene	10.659	104	13067	3.369	ug/l	88
78) n-propylbenzene	11.305	91	1960	0.286	ug/l	95
84) 1,2,4-Trimethylbenzene	11.756	105	3131	0.623	ug/l	97
95) Naphthalene	13.774	128	13886	2.585	ug/l	98

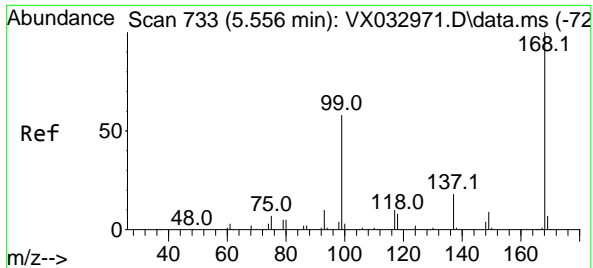
(#) = qualifier out of range (m) = manual integration (+) = signals summed

Data Path : Z:\voasrv\HPCHEM1\MSVOA_X\Data\VX120522\
 Data File : VX033245.D
 Acq On : 05 Dec 2022 22:45
 Operator : JC/MD
 Sample : N5859-09
 Misc : 5.0mL/MSVOA_X/WATER
 ALS Vial : 30 Sample Multiplier: 1

Instrument :
 MSVOA_X
 ClientSampleId :
 31910

Quant Time: Dec 06 06:03:06 2022
 Quant Method : Z:\voasrv\HPCHEM1\MSVOA_X\Method\82X112222W.M
 Quant Title : SW846 8260
 QLast Update : Tue Nov 22 13:58:46 2022
 Response via : Initial Calibration

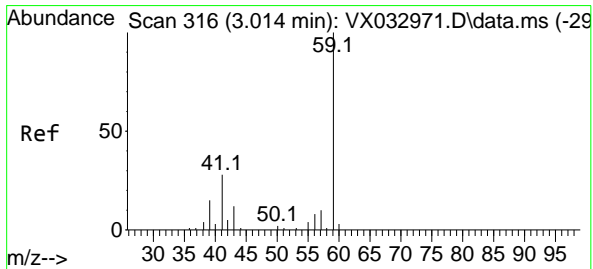
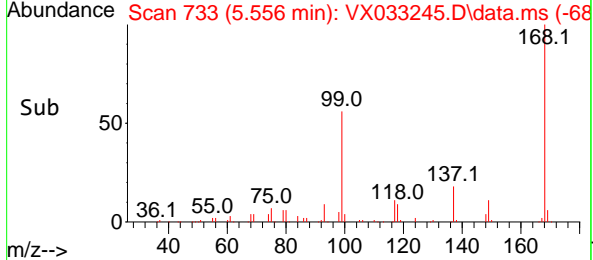
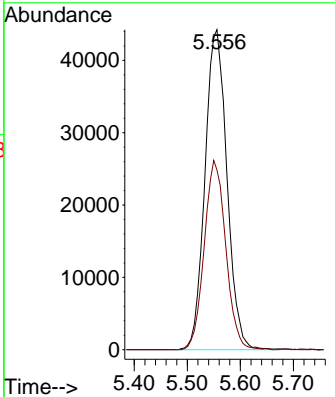
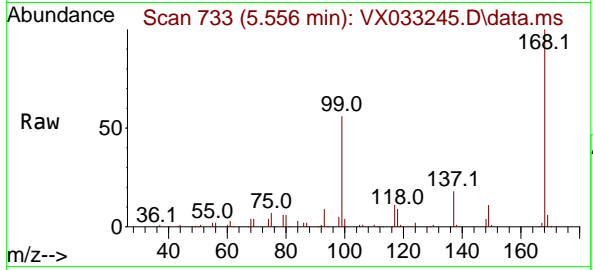




#1
 Pentafluorobenzene
 Concen: 50.000 ug/l
 RT: 5.556 min Scan# 71
 Delta R.T. -0.000 min
 Lab File: VX033245.D
 Acq: 05 Dec 2022 22:45

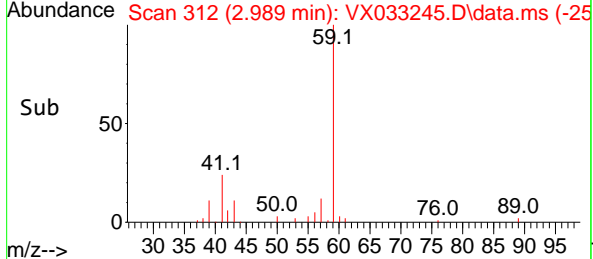
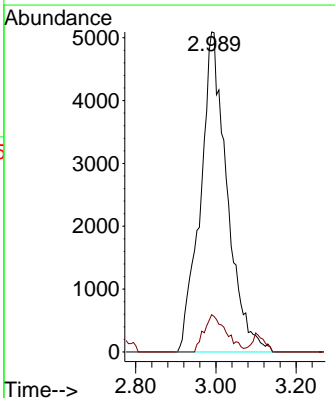
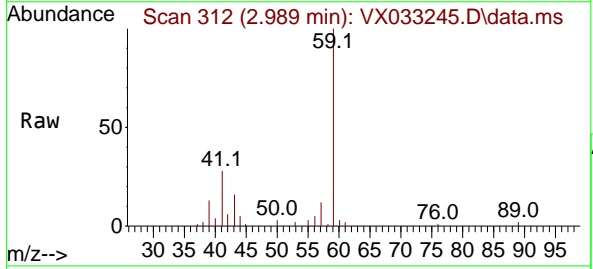
Instrument : MSVOA_X
 ClientSampleId : 31910

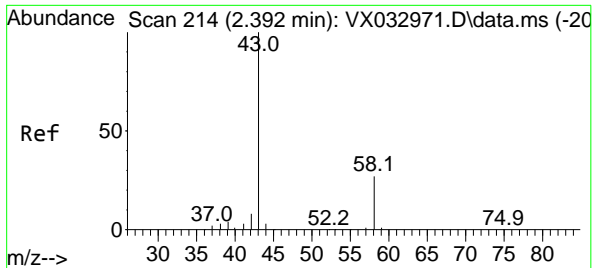
Tgt Ion:168 Resp: 127216
 Ion Ratio Lower Upper
 168 100
 99 56.2 46.1 69.1



#11
 Tert butyl alcohol
 Concen: 119.762 ug/l
 RT: 2.989 min Scan# 312
 Delta R.T. 0.024 min
 Lab File: VX033245.D
 Acq: 05 Dec 2022 22:45

Tgt Ion: 59 Resp: 23520
 Ion Ratio Lower Upper
 59 100
 57 9.6 8.2 12.4

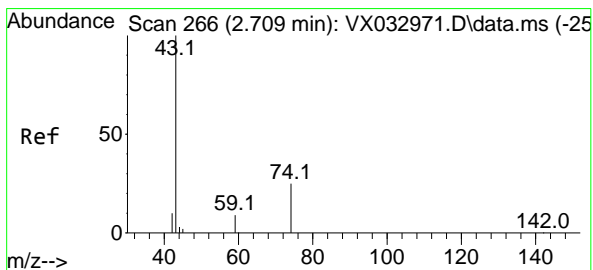
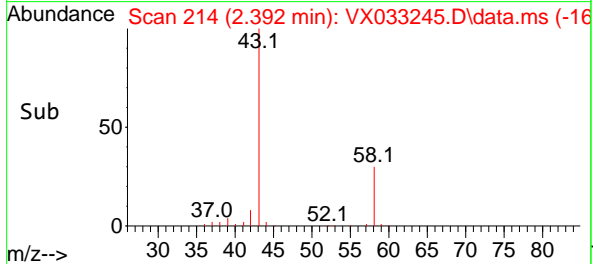
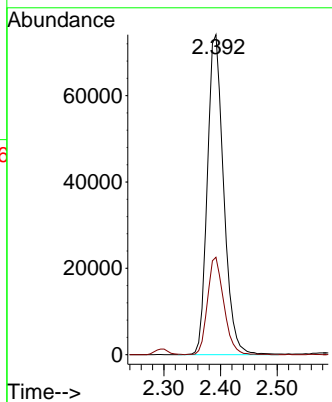
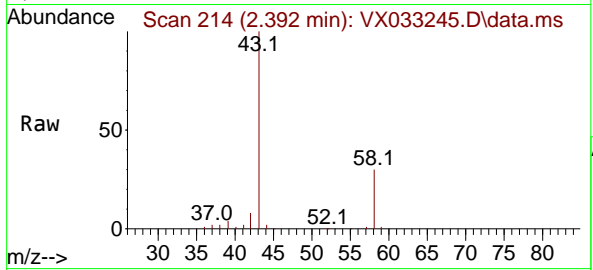




#16
 Acetone
 Concen: 256.036 ug/l
 RT: 2.392 min Scan# 21
 Delta R.T. 0.012 min
 Lab File: VX033245.D
 Acq: 05 Dec 2022 22:45

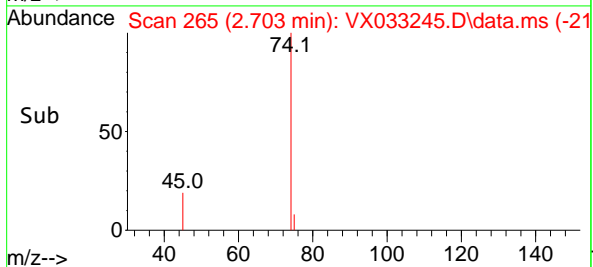
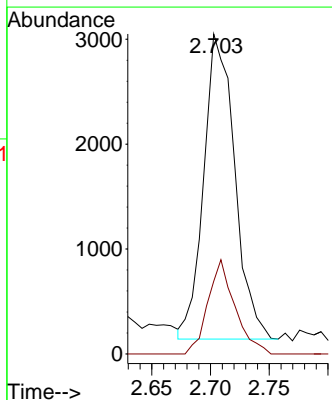
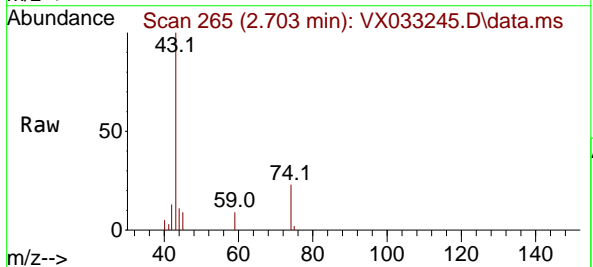
Instrument :
 MSVOA_X
 ClientSampleId :
 31910

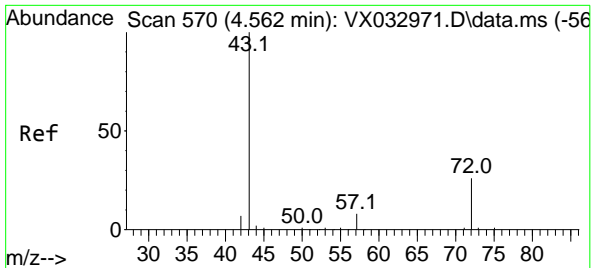
Tgt Ion: 43 Resp: 148139
 Ion Ratio Lower Upper
 43 100
 58 30.5 23.8 35.8



#18
 Methyl Acetate
 Concen: 3.337 ug/l
 RT: 2.703 min Scan# 265
 Delta R.T. -0.000 min
 Lab File: VX033245.D
 Acq: 05 Dec 2022 22:45

Tgt Ion: 43 Resp: 5345
 Ion Ratio Lower Upper
 43 100
 74 26.9 19.4 29.0

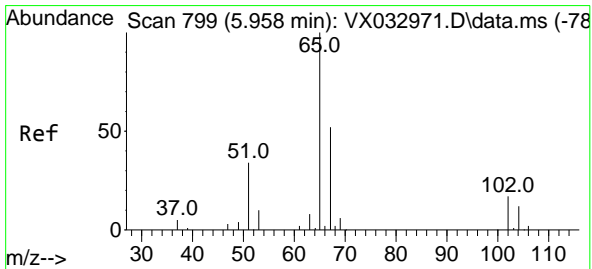
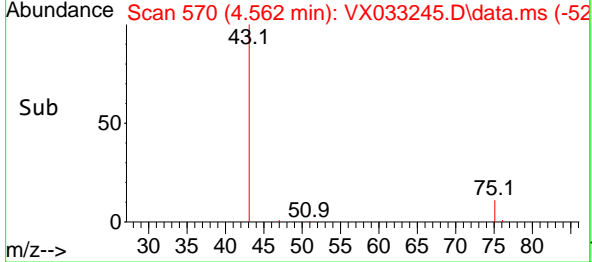
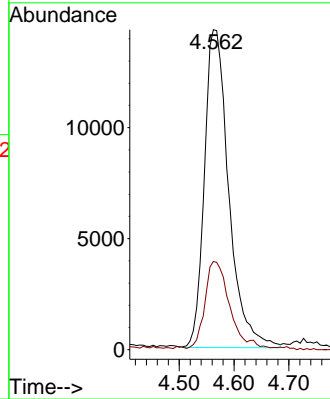
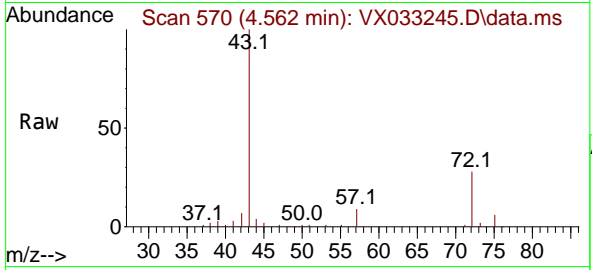




#25
 2-Butanone
 Concen: 55.431 ug/l
 RT: 4.562 min Scan# 51
 Delta R.T. 0.006 min
 Lab File: VX033245.D
 Acq: 05 Dec 2022 22:45

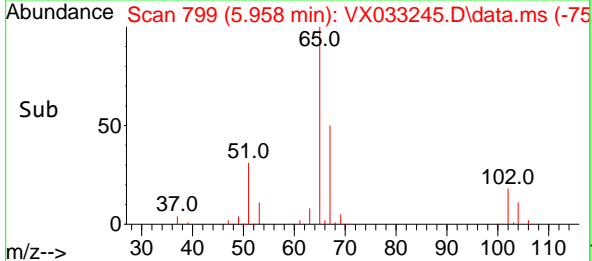
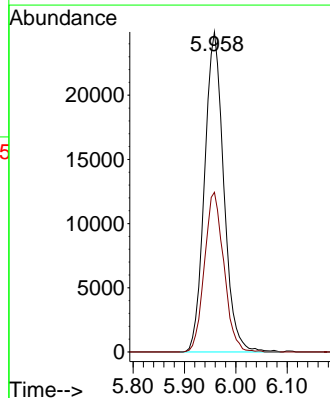
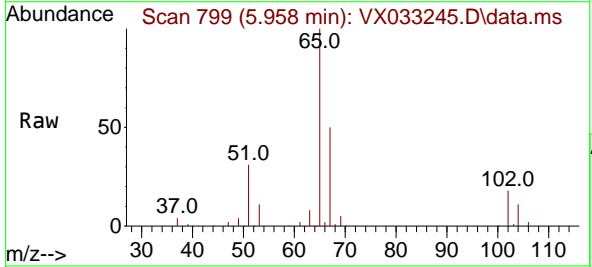
Instrument :
 MSVOA_X
 ClientSampleId :
 31910

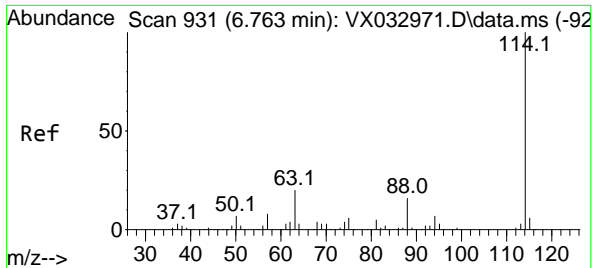
Tgt Ion: 43 Resp: 44224
 Ion Ratio Lower Upper
 43 100
 72 26.9 22.2 33.2



#33
 1,2-Dichloroethane-d4
 Concen: 52.199 ug/l
 RT: 5.958 min Scan# 799
 Delta R.T. 0.000 min
 Lab File: VX033245.D
 Acq: 05 Dec 2022 22:45

Tgt Ion: 65 Resp: 64717
 Ion Ratio Lower Upper
 65 100
 67 50.5 0.0 101.8



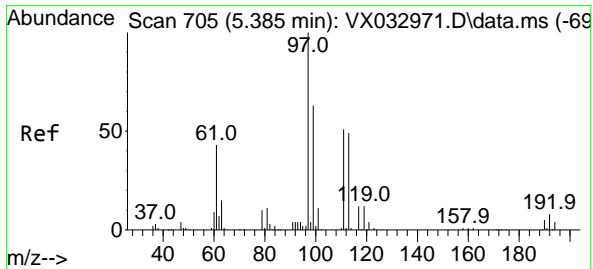
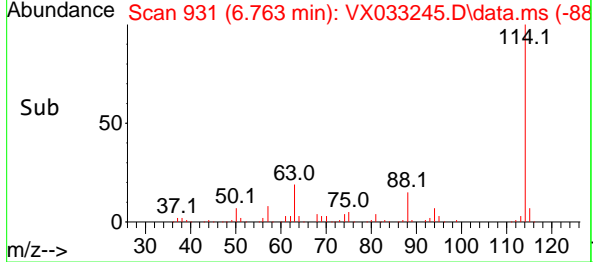
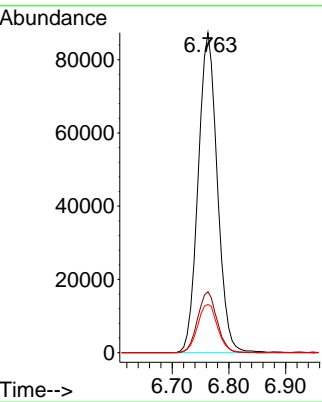
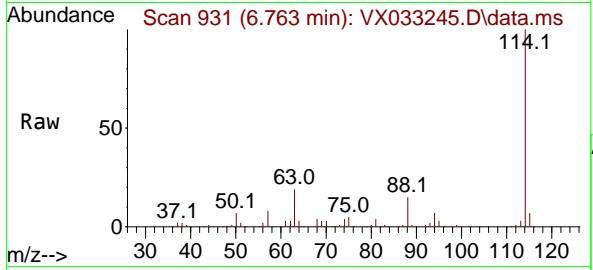


#34
 1,4-Difluorobenzene
 Concen: 50.000 ug/l
 RT: 6.763 min Scan# 91
 Delta R.T. -0.000 min
 Lab File: VX033245.D
 Acq: 05 Dec 2022 22:45

Instrument : MSVOA_X
 ClientSampleId : 31910

Tgt Ion:114 Resp: 204406

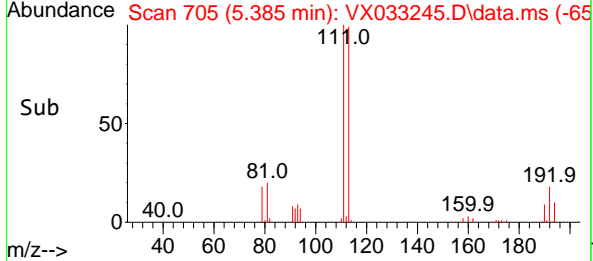
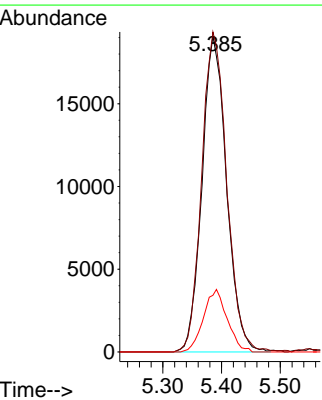
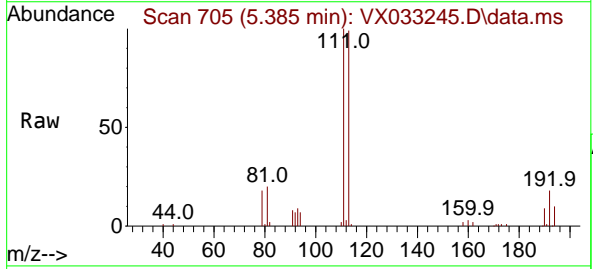
Ion	Ratio	Lower	Upper
114	100		
63	19.1	0.0	41.6
88	15.0	0.0	33.4

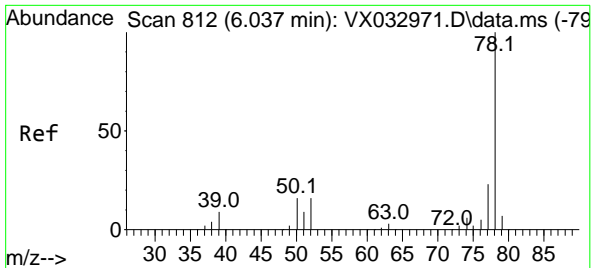


#35
 Dibromofluoromethane
 Concen: 48.006 ug/l
 RT: 5.385 min Scan# 705
 Delta R.T. 0.000 min
 Lab File: VX033245.D
 Acq: 05 Dec 2022 22:45

Tgt Ion:113 Resp: 55321

Ion	Ratio	Lower	Upper
113	100		
111	103.6	82.4	123.6
192	19.1	15.4	23.2

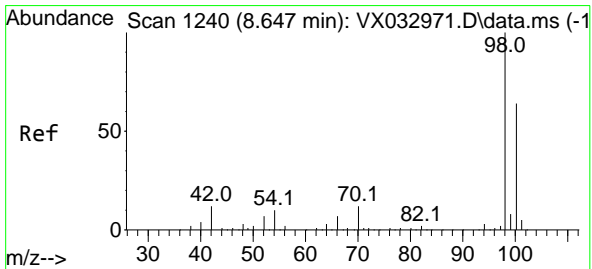
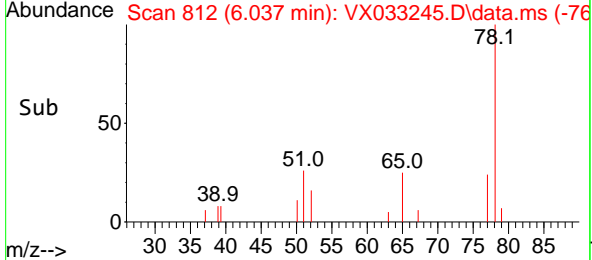
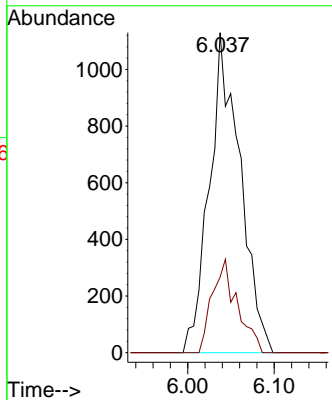
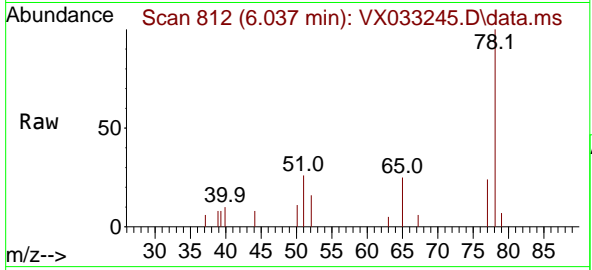




#40
Benzene
Concen: 0.538 ug/l
RT: 6.037 min Scan# 812
Delta R.T. 0.000 min
Lab File: VX033245.D
Acq: 05 Dec 2022 22:45

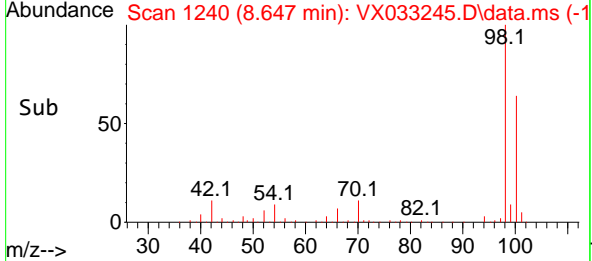
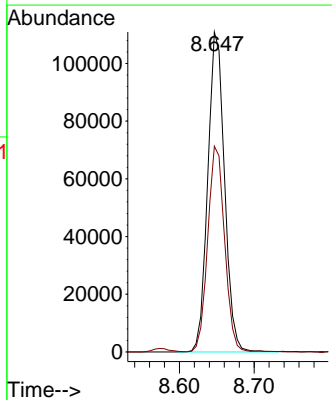
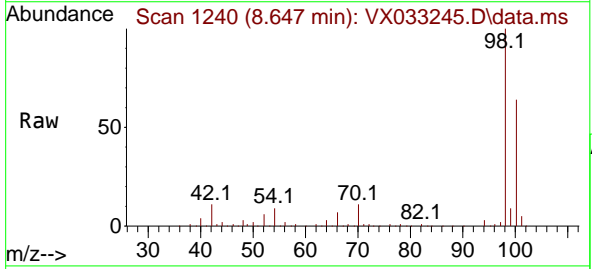
Instrument : MSVOA_X
ClientSampleId : 31910

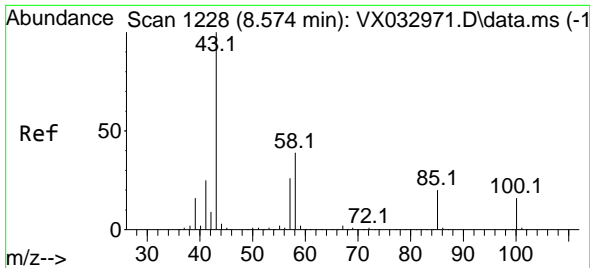
Tgt Ion: 78 Resp: 2781
Ion Ratio Lower Upper
78 100
77 23.6 19.0 28.4



#50
Toluene-d8
Concen: 49.745 ug/l
RT: 8.647 min Scan# 1240
Delta R.T. -0.006 min
Lab File: VX033245.D
Acq: 05 Dec 2022 22:45

Tgt Ion: 98 Resp: 172517
Ion Ratio Lower Upper
98 100
100 65.0 50.9 76.3

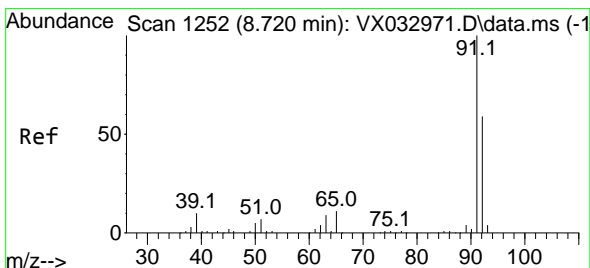
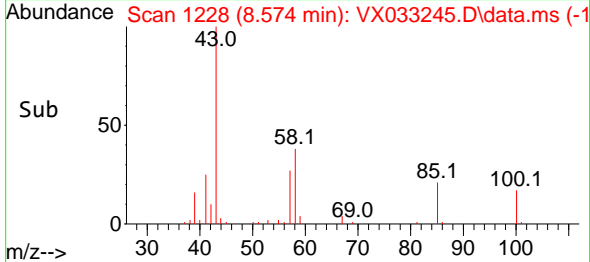
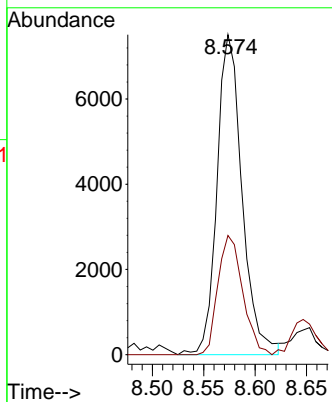
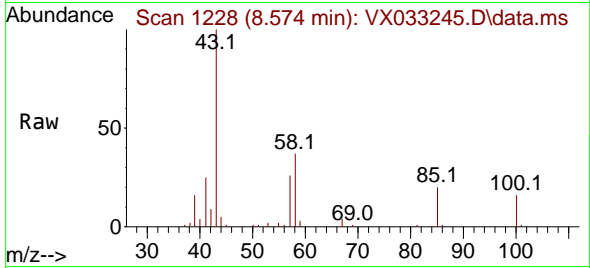




#51
 4-Methyl-2-Pentanone
 Concen: 7.750 ug/l
 RT: 8.574 min Scan# 11
 Delta R.T. -0.000 min
 Lab File: VX033245.D
 Acq: 05 Dec 2022 22:45

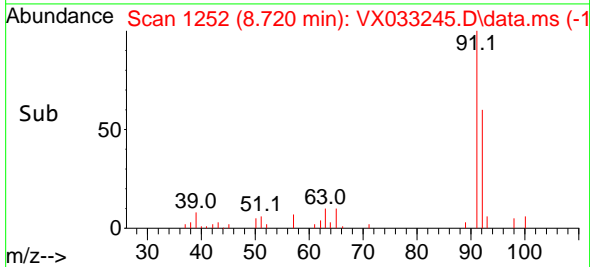
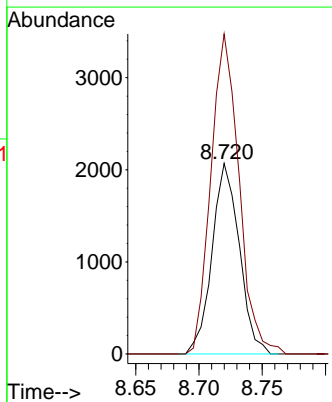
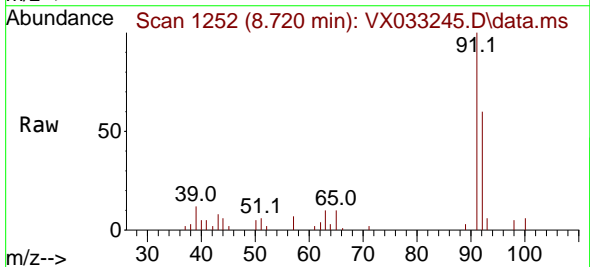
Instrument : MSVOA_X
 ClientSampleId : 31910

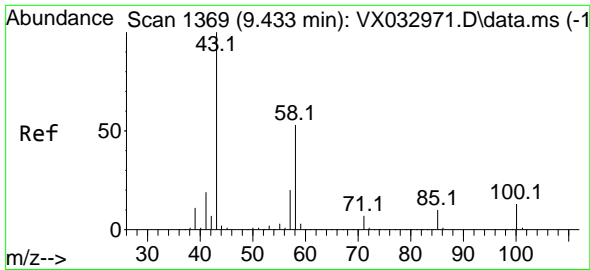
Tgt Ion: 43 Resp: 12714
 Ion Ratio Lower Upper
 43 100
 58 36.8 30.9 46.3



#52
 Toluene
 Concen: 0.912 ug/l
 RT: 8.720 min Scan# 1252
 Delta R.T. -0.000 min
 Lab File: VX033245.D
 Acq: 05 Dec 2022 22:45

Tgt Ion: 92 Resp: 3100
 Ion Ratio Lower Upper
 92 100
 91 173.3 138.3 207.5

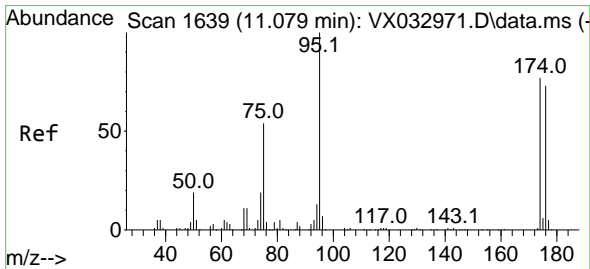
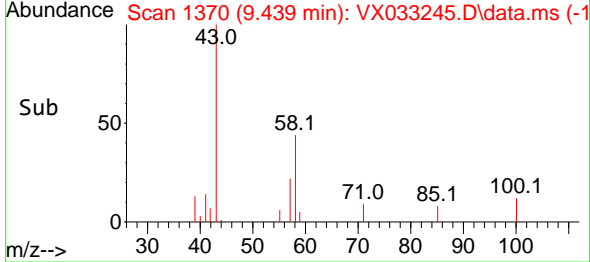
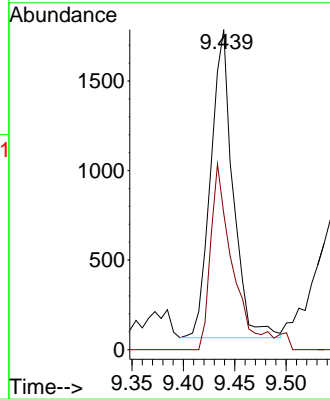
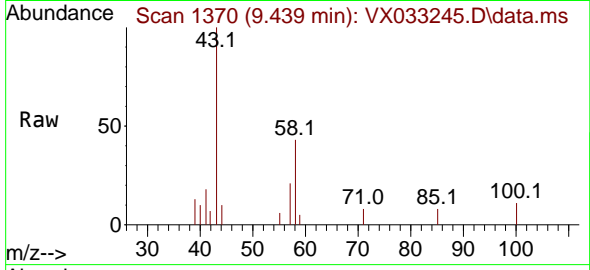




#59
 2-Hexanone
 Concen: 2.142 ug/l
 RT: 9.439 min Scan# 1370
 Delta R.T. 0.006 min
 Lab File: VX033245.D
 Acq: 05 Dec 2022 22:45

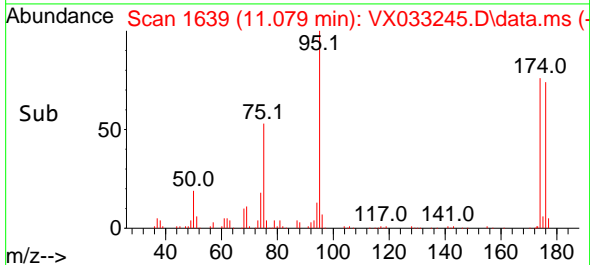
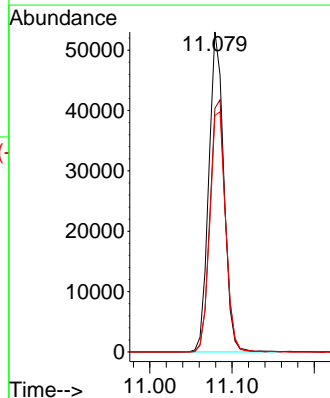
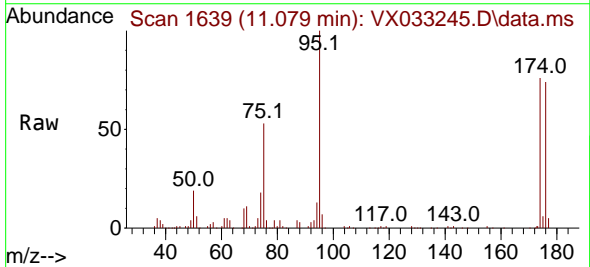
Instrument : MSVOA_X
 Client Sample Id : 31910

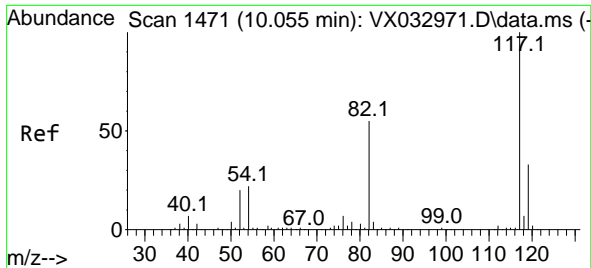
Tgt Ion: 43 Resp: 2596
 Ion Ratio Lower Upper
 43 100
 58 62.1 26.5 79.5



#62
 4-Bromofluorobenzene
 Concen: 44.402 ug/l
 RT: 11.079 min Scan# 1639
 Delta R.T. 0.000 min
 Lab File: VX033245.D
 Acq: 05 Dec 2022 22:45

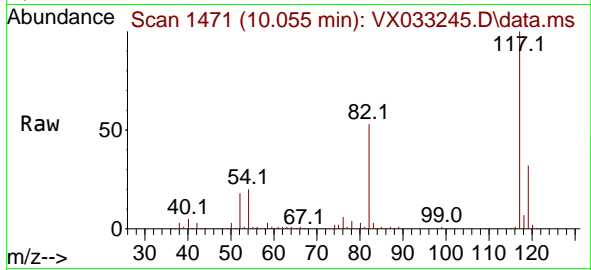
Tgt Ion: 95 Resp: 67214
 Ion Ratio Lower Upper
 95 100
 174 80.8 0.0 164.0
 176 78.4 0.0 154.4



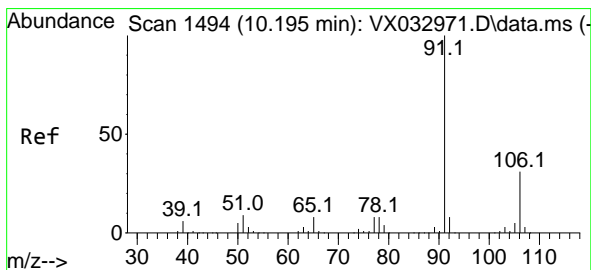
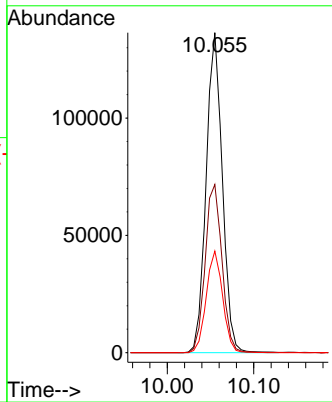
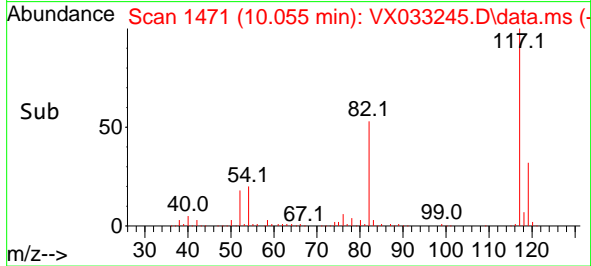


#63
 Chlorobenzene-d5
 Concen: 50.000 ug/l
 RT: 10.055 min Scan# 14
 Delta R.T. 0.000 min
 Lab File: VX033245.D
 Acq: 05 Dec 2022 22:45

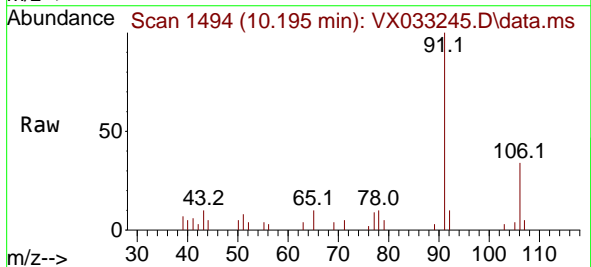
Instrument :
 MSVOA_X
 ClientSampleId :
 31910



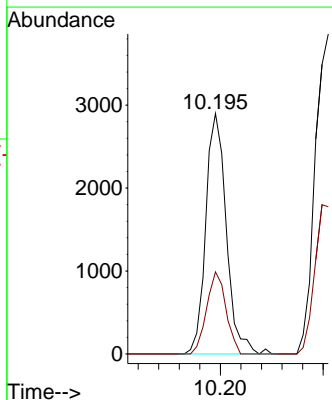
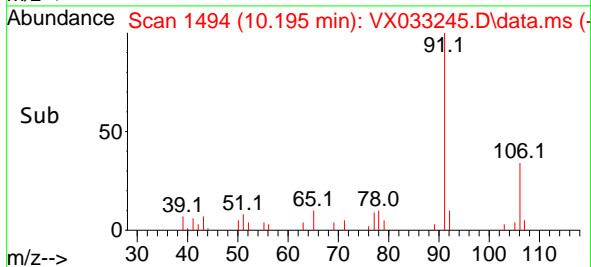
Tgt Ion:117 Resp: 176927
 Ion Ratio Lower Upper
 117 100
 82 52.6 44.3 66.5
 119 31.7 25.7 38.5

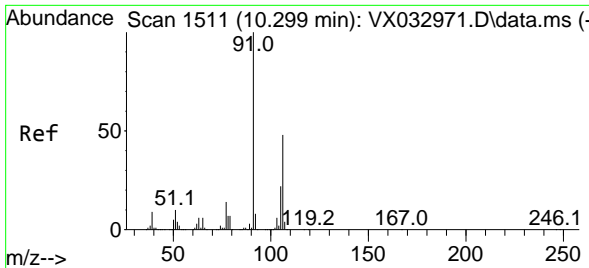


#67
 Ethyl Benzene
 Concen: 0.645 ug/l
 RT: 10.195 min Scan# 1494
 Delta R.T. 0.000 min
 Lab File: VX033245.D
 Acq: 05 Dec 2022 22:45



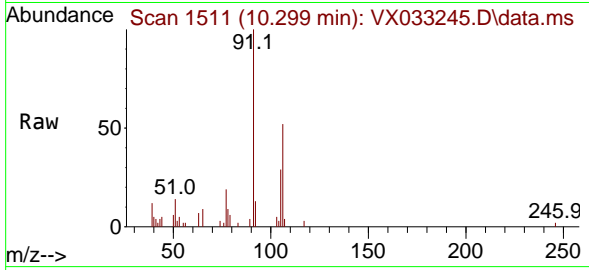
Tgt Ion: 91 Resp: 4034
 Ion Ratio Lower Upper
 91 100
 106 34.1 25.0 37.6



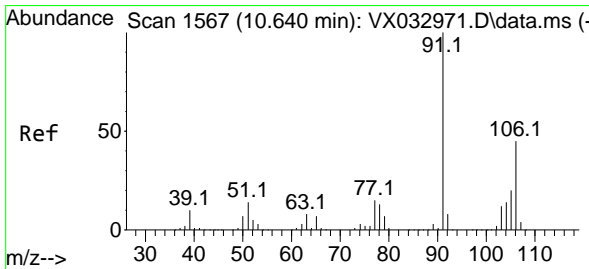
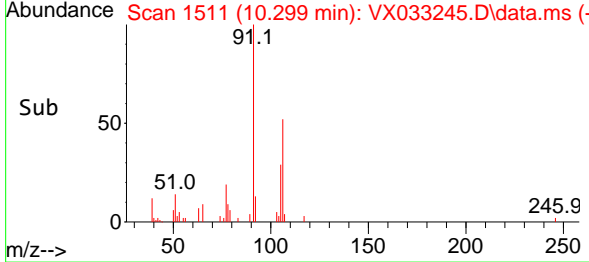
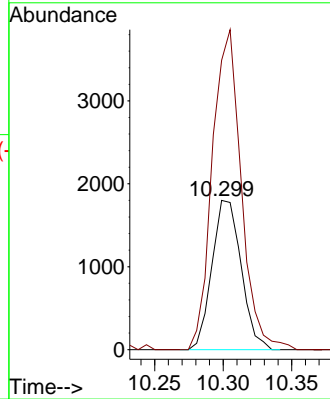


#68
 m/p-Xylenes
 Concen: 1.088 ug/l
 RT: 10.299 min Scan# 1511
 Delta R.T. -0.006 min
 Lab File: VX033245.D
 Acq: 05 Dec 2022 22:45

Instrument : MSVOA_X
 ClientSampleId : 31910

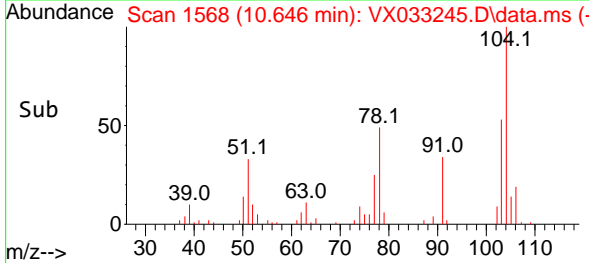
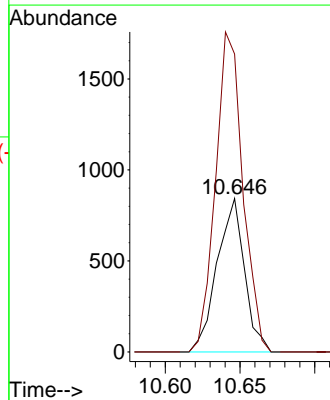
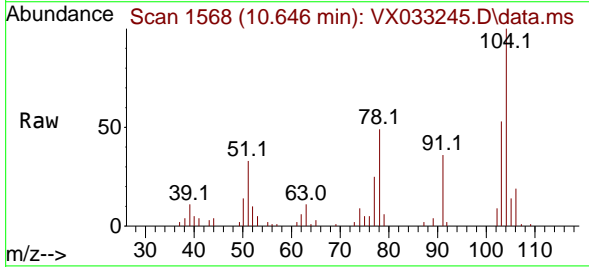


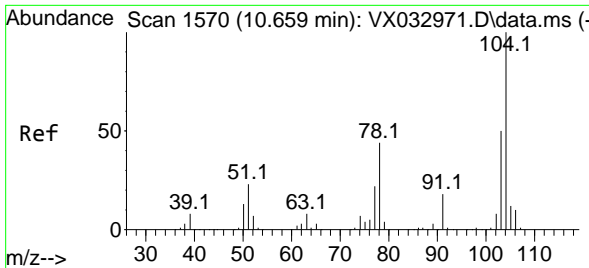
Tgt Ion:106 Resp: 2667
 Ion Ratio Lower Upper
 106 100
 91 212.5 164.5 246.7



#69
 o-Xylene
 Concen: 0.453 ug/l
 RT: 10.646 min Scan# 1568
 Delta R.T. 0.006 min
 Lab File: VX033245.D
 Acq: 05 Dec 2022 22:45

Tgt Ion:106 Resp: 1075
 Ion Ratio Lower Upper
 106 100
 91 208.1 109.2 327.6

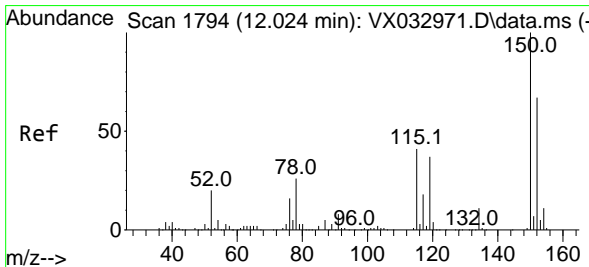
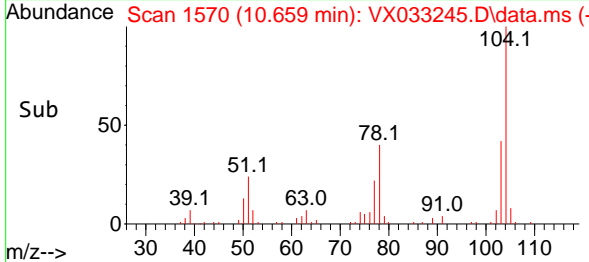
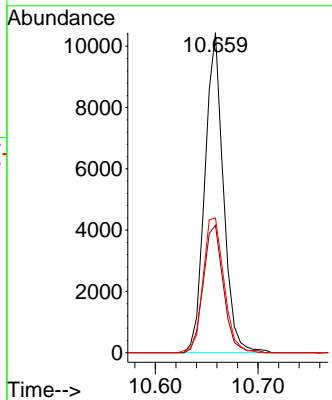
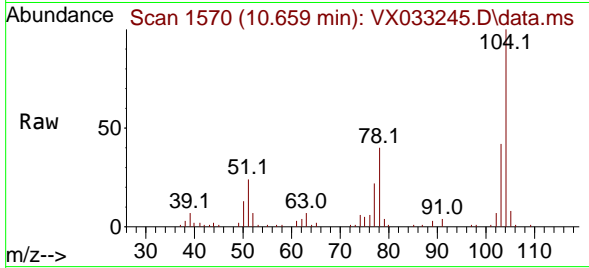




#70
 Styrene
 Concen: 3.369 ug/l
 RT: 10.659 min Scan# 11
 Delta R.T. -0.000 min
 Lab File: VX033245.D
 Acq: 05 Dec 2022 22:45

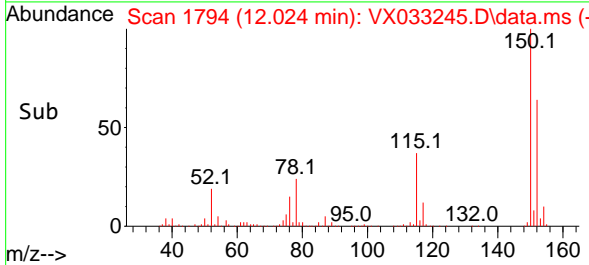
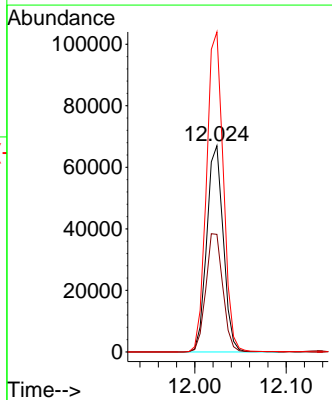
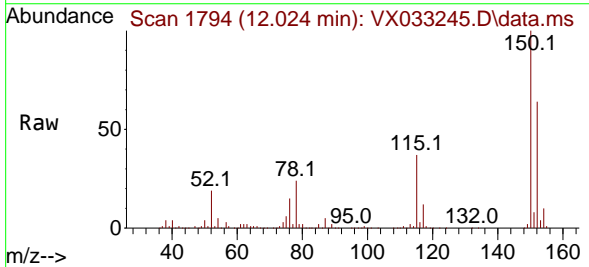
Instrument :
 MSVOA_X
 ClientSampleId :
 31910

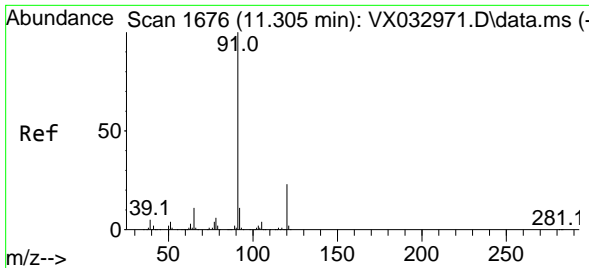
Tgt Ion	Resp	Lower	Upper
104	13067		
104	100		
78	43.5	41.8	62.8
103	47.6	44.5	66.7



#72
 1,4-Dichlorobenzene-d4
 Concen: 50.000 ug/l
 RT: 12.024 min Scan# 1794
 Delta R.T. 0.000 min
 Lab File: VX033245.D
 Acq: 05 Dec 2022 22:45

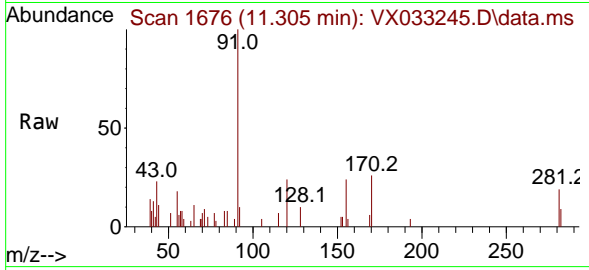
Tgt Ion	Resp	Lower	Upper
152	83994		
152	100		
115	58.9	44.0	132.0
150	157.3	0.0	351.8



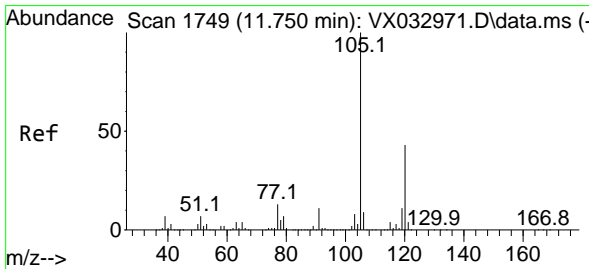
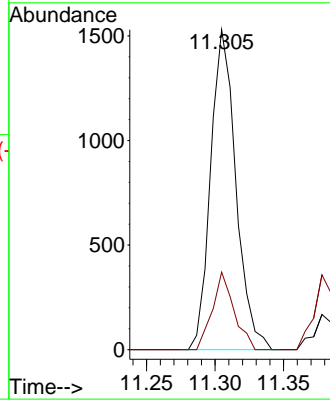
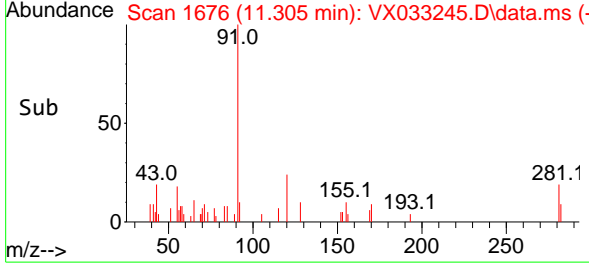


#78
 n-propylbenzene
 Concen: 0.286 ug/l
 RT: 11.305 min Scan# 11
 Delta R.T. -0.000 min
 Lab File: VX033245.D
 Acq: 05 Dec 2022 22:45

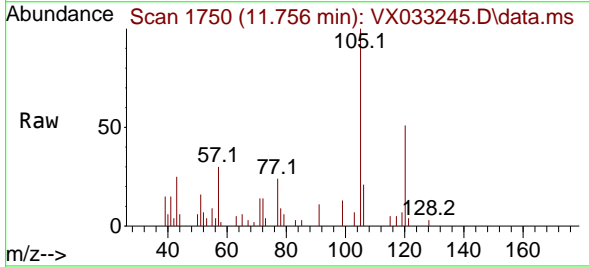
Instrument : MSVOA_X
 ClientSampleId : 31910



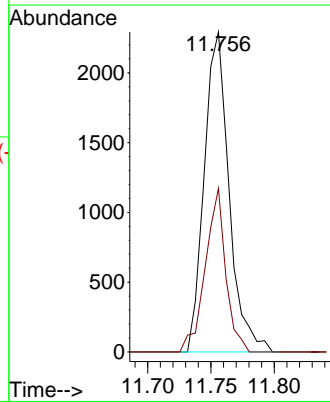
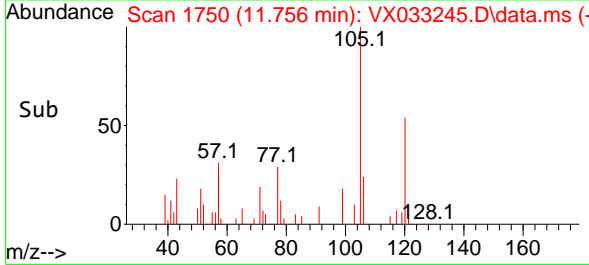
Tgt Ion: 91 Resp: 1960
 Ion Ratio Lower Upper
 91 100
 120 20.7 11.6 34.8

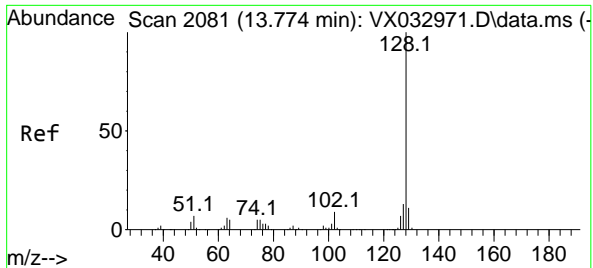


#84
 1,2,4-Trimethylbenzene
 Concen: 0.623 ug/l
 RT: 11.756 min Scan# 1750
 Delta R.T. 0.006 min
 Lab File: VX033245.D
 Acq: 05 Dec 2022 22:45



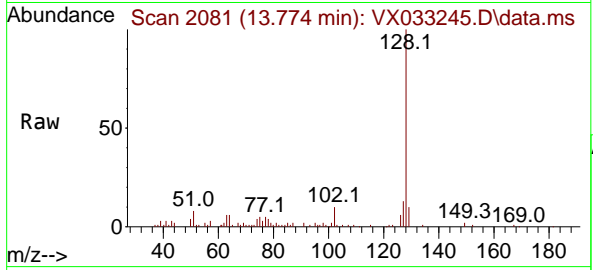
Tgt Ion: 105 Resp: 3131
 Ion Ratio Lower Upper
 105 100
 120 42.1 21.9 65.5





#95
 Naphthalene
 Concen: 2.585 ug/l
 RT: 13.774 min Scan# 2081
 Delta R.T. -0.006 min
 Lab File: VX033245.D
 Acq: 05 Dec 2022 22:45

Instrument : MSVOA_X
 ClientSampleId : 31910



Tgt Ion:128 Resp: 13886

Ion	Ratio	Lower	Upper
128	100		
127	12.2	10.2	15.4
129	11.7	8.9	13.3

