

Data Path : Z:\voasrv\HPCHEM1\MSVOA\_X\Data\VX120522\  
 Data File : VX033238.D  
 Acq On : 05 Dec 2022 20:04  
 Operator : JC/MD  
 Sample : N5875-04  
 Misc : 5.0mL/MSVOA\_X/WATER  
 ALS Vial : 23 Sample Multiplier: 1

Instrument :  
 MSVOA\_X  
 ClientSampleId :  
 MW-38D

Integration Parameters: RTEINT.P

Integrator: RTE  
 Smoothing : ON  
 Sampling : 1  
 Start Thrs : 0.2  
 Stop Thrs : 0

Filtering: 5  
 Min Area: 3 % of largest Peak  
 Max Peaks: 100  
 Peak Location: TOP

If leading or trailing edge < 100 prefer < Baseline drop else tangent >  
 Peak separation: 5

Method : Z:\voasrv\HPCHEM1\MSVOA\_X\Method\82X112222W.M  
 Title : SW846 8260

Signal : TIC: VX033238.D\data.ms

peak #	R.T. min	first scan	max scan	last scan	PK TY	peak height	corr. area	corr. % max.	% of total
1	1.270	26	30	43	rBV2	13033	32768	3.57%	0.477%
2	1.374	43	47	51	rVV	15396	16475	1.79%	0.240%
3	1.752	104	109	119	rVB	30527	41282	4.49%	0.601%
4	1.959	138	143	151	rVB2	6187	9595	1.04%	0.140%
5	2.343	198	206	222	rVB	66599	130325	14.19%	1.896%
6	2.782	269	278	288	rBV	57163	129063	14.05%	1.878%
7	2.867	288	292	300	rVV3	6865	15181	1.65%	0.221%
8	2.983	300	311	323	rVV	88957	306877	33.41%	4.464%
9	3.111	323	332	347	rVB	399583	918418	100.00%	13.361%
10	3.757	427	438	447	rBV3	15167	42901	4.67%	0.624%
11	4.050	476	486	493	rBV5	3449	11455	1.25%	0.167%
12	4.215	501	513	522	rBV3	30076	90760	9.88%	1.320%
13	4.306	524	528	536	rVB5	3790	9634	1.05%	0.140%
14	4.458	538	553	564	rVB4	6206	23636	2.57%	0.344%
15	5.135	652	664	682	rVB6	6994	29637	3.23%	0.431%
16	5.385	695	705	717	rBV	58716	172606	18.79%	2.511%
17	5.556	722	733	741	rVV	127632	377952	41.15%	5.498%
18	5.623	741	744	758	rVB2	29009	70425	7.67%	1.025%
19	5.848	771	781	789	rBV5	5893	17186	1.87%	0.250%
20	5.958	789	799	807	rBV2	60904	156949	17.09%	2.283%
21	6.044	807	813	819	rVB3	9730	23966	2.61%	0.349%
22	6.251	834	847	859	rBV2	80281	246465	26.84%	3.585%
23	6.763	921	931	941	rBV	185731	451008	49.11%	6.561%
24	7.177	992	999	1009	rVB6	4381	10673	1.16%	0.155%
25	7.366	1021	1030	1038	rBV4	9157	22631	2.46%	0.329%
26	7.494	1044	1051	1057	rBV3	5415	10983	1.20%	0.160%
27	7.568	1057	1063	1066	rVV4	3749	9554	1.04%	0.139%
28	7.604	1066	1069	1077	rVB2	6388	11903	1.30%	0.173%
29	7.775	1090	1097	1105	rVB2	14035	28520	3.11%	0.415%
30	7.903	1105	1118	1122	rBV6	3850	11451	1.25%	0.167%
31	7.982	1122	1131	1140	rVB	49225	108435	11.81%	1.577%
32	8.110	1143	1152	1161	rBV	79573	161350	17.57%	2.347%
33	8.250	1161	1175	1180	rBV7	3918	9836	1.07%	0.143%
34	8.318	1180	1186	1193	rBV5	4788	10067	1.10%	0.146%
35	8.427	1199	1204	1211	rVB2	13448	22617	2.46%	0.329%
36	8.506	1211	1217	1225	rVB3	14765	29095	3.17%	0.423%

Data Path : Z:\voasrv\HPCHEM1\MSVOA\_X\Data\VX120522\  
 Data File : VX033238.D  
 Acq On : 05 Dec 2022 20:04  
 Operator : JC/MD  
 Sample : N5875-04  
 Misc : 5.0mL/MSVOA\_X/WATER  
 ALS Vial : 23 Sample Multiplier: 1

Instrument :  
 MSVOA\_X  
 ClientSampleId :  
 MW-38D

Integration Parameters: RTEINT.P

Integrator: RTE  
 Smoothing : ON  
 Sampling : 1  
 Start Thrs: 0.2  
 Stop Thrs : 0

Filtering: 5  
 Min Area: 3 % of largest Peak  
 Max Peaks: 100  
 Peak Location: TOP

If leading or trailing edge < 100 prefer < Baseline drop else tangent >  
 Peak separation: 5

Method : Z:\voasrv\HPCHEM1\MSVOA\_X\Method\82X112222W.M  
 Title : SW846 8260

37	8.647	1227	1240	1248	rBV	277762	457393	49.80%	6.654%
38	8.720	1248	1252	1257	rVV2	9604	15195	1.65%	0.221%
39	8.842	1265	1272	1281	rVB2	9209	16076	1.75%	0.234%
40	8.970	1287	1293	1300	rVB5	16283	37662	4.10%	0.548%
41	9.049	1300	1306	1311	rBV2	11182	21267	2.32%	0.309%
42	9.104	1311	1315	1320	rVB	9304	15067	1.64%	0.219%
43	9.159	1320	1324	1330	rBV	11484	18155	1.98%	0.264%
44	9.458	1365	1373	1377	rBV	31211	52673	5.74%	0.766%
45	9.506	1377	1381	1386	rVB2	7393	12672	1.38%	0.184%
46	10.055	1465	1471	1476	rVB	380703	502406	54.70%	7.309%
47	10.146	1482	1486	1490	rVB4	5993	10100	1.10%	0.147%
48	10.195	1490	1494	1499	rBV	14772	19467	2.12%	0.283%
49	10.299	1504	1511	1517	rVB	37502	59900	6.52%	0.871%
50	10.640	1564	1567	1573	rVB	11500	15690	1.71%	0.228%
51	10.963	1614	1620	1624	rBV	15706	20135	2.19%	0.293%
52	11.012	1624	1628	1634	rVB	15476	20953	2.28%	0.305%
53	11.079	1634	1639	1645	rBV	246587	317202	34.54%	4.615%
54	11.378	1685	1688	1696	rVV	10113	18979	2.07%	0.276%
55	11.451	1696	1700	1707	rVB	9767	13475	1.47%	0.196%
56	11.616	1723	1727	1735	rVB	10866	15657	1.70%	0.228%
57	11.713	1735	1743	1746	rBV	10603	15573	1.70%	0.227%
58	11.750	1746	1749	1754	rVB	17036	21215	2.31%	0.309%
59	11.890	1769	1772	1779	rVB	11813	15933	1.73%	0.232%
60	12.024	1788	1794	1801	rBV	388570	492792	53.66%	7.169%
61	12.085	1801	1804	1813	rVB	9896	14599	1.59%	0.212%
62	12.177	1815	1819	1825	rVB	21284	25932	2.82%	0.377%
63	12.244	1825	1830	1837	rBV	237965	303237	33.02%	4.411%
64	12.311	1837	1841	1851	rVB	29030	40528	4.41%	0.590%
65	12.402	1853	1856	1862	rBV	10744	14565	1.59%	0.212%
66	12.469	1862	1867	1872	rVB2	20133	26731	2.91%	0.389%
67	12.609	1886	1890	1893	rBV2	7523	10251	1.12%	0.149%
68	12.646	1893	1896	1900	rVV	27192	33374	3.63%	0.486%
69	12.701	1900	1905	1912	rVV	61199	95551	10.40%	1.390%
70	12.762	1912	1915	1919	rVB2	9801	12644	1.38%	0.184%
71	12.841	1919	1928	1933	rBV	24694	35303	3.84%	0.514%
72	12.920	1939	1941	1946	rVV2	8879	14056	1.53%	0.204%
73	13.030	1954	1959	1965	rVB2	20578	29836	3.25%	0.434%
74	13.134	1967	1976	1979	rBV2	7872	13295	1.45%	0.193%
75	13.170	1979	1982	1983	rVV	8898	9760	1.06%	0.142%
76	13.195	1983	1986	1990	rVB	15346	19305	2.10%	0.281%

Data Path : Z:\voasrv\HPCHEM1\MSVOA\_X\Data\VX120522\  
 Data File : VX033238.D  
 Acq On : 05 Dec 2022 20:04  
 Operator : JC/MD  
 Sample : N5875-04  
 Misc : 5.0mL/MSVOA\_X/WATER  
 ALS Vial : 23 Sample Multiplier: 1

Instrument :  
 MSVOA\_X  
 ClientSampleId :  
 MW-38D

Integration Parameters: RTEINT.P

Integrator: RTE  
 Smoothing : ON Filtering: 5  
 Sampling : 1 Min Area: 3 % of largest Peak  
 Start Thrs: 0.2 Max Peaks: 100  
 Stop Thrs : 0 Peak Location: TOP

If leading or trailing edge < 100 prefer < Baseline drop else tangent >  
 Peak separation: 5

Method : Z:\voasrv\HPCHEM1\MSVOA\_X\Method\82X112222W.M  
 Title : SW846 8260

77	13.292	1997	2002	2007	rVB2	21010	28832	3.14%	0.419%
78	13.347	2007	2011	2015	rBV2	7027	9394	1.02%	0.137%
79	13.585	2046	2050	2053	rVV3	6746	9220	1.00%	0.134%
80	13.640	2053	2059	2061	rVV2	29955	51243	5.58%	0.745%
81	13.664	2061	2063	2072	rVB2	22207	25357	2.76%	0.369%
82	13.780	2079	2082	2090	rVB2	7582	15809	1.72%	0.230%
83	13.926	2101	2106	2110	rBV2	16491	21759	2.37%	0.317%
84	14.213	2149	2153	2165	rVV2	6890	12144	1.32%	0.177%
85	14.371	2175	2179	2185	rVB3	8096	11692	1.27%	0.170%
86	14.786	2241	2247	2252	rBV3	7510	12204	1.33%	0.178%

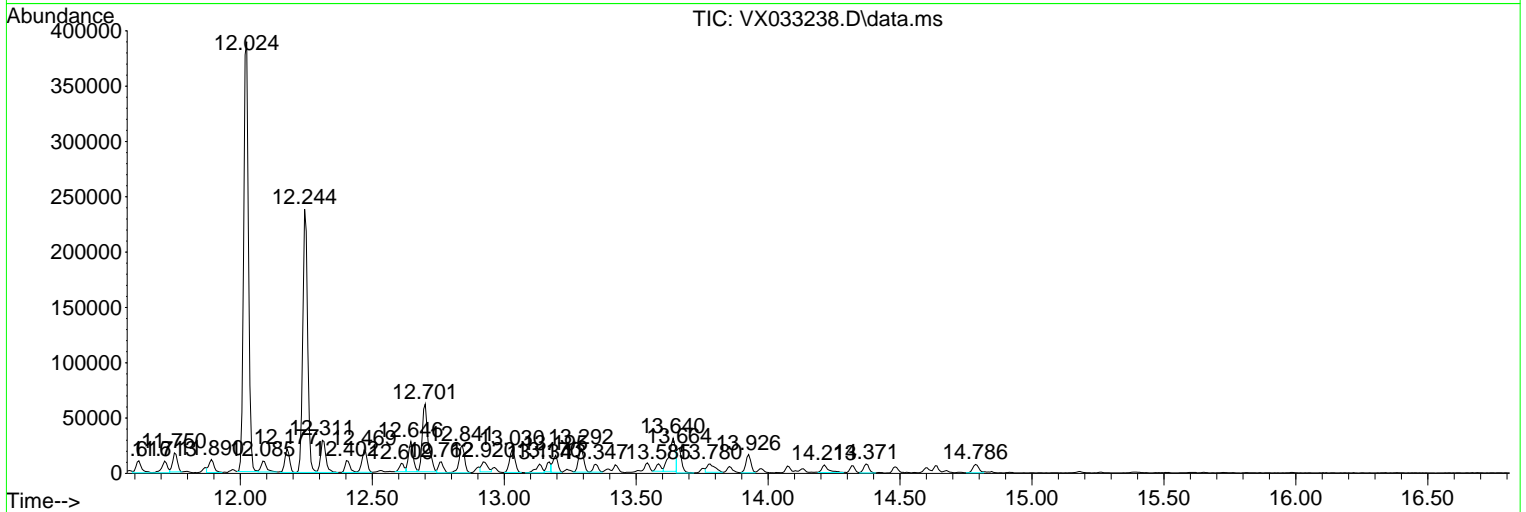
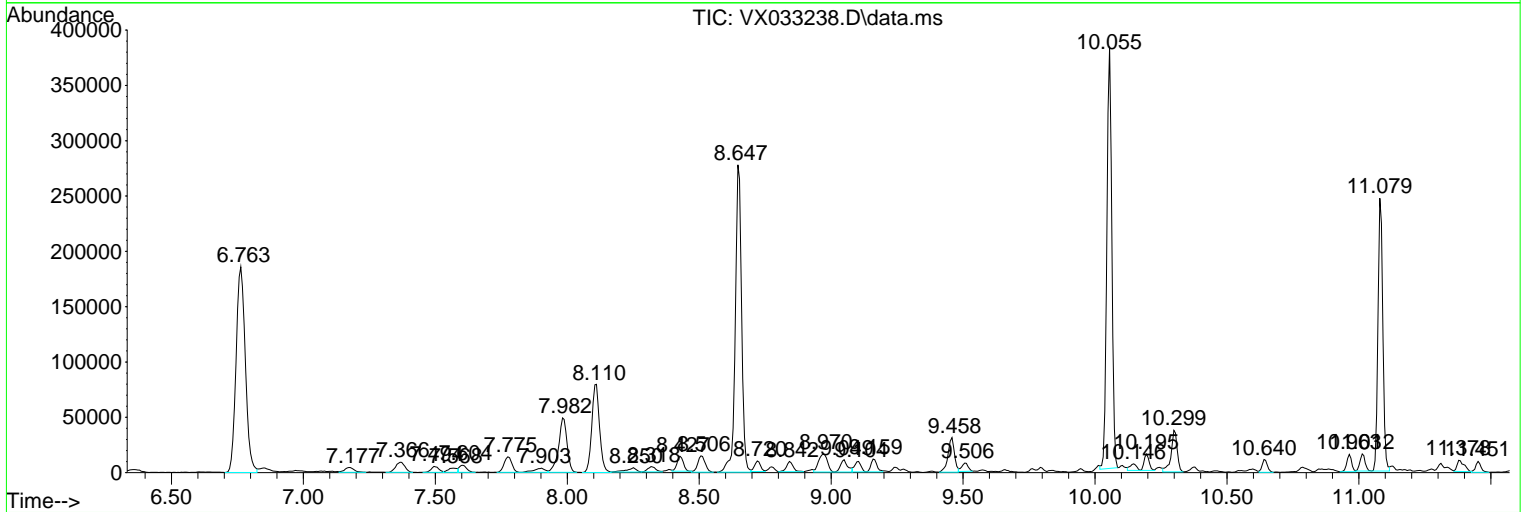
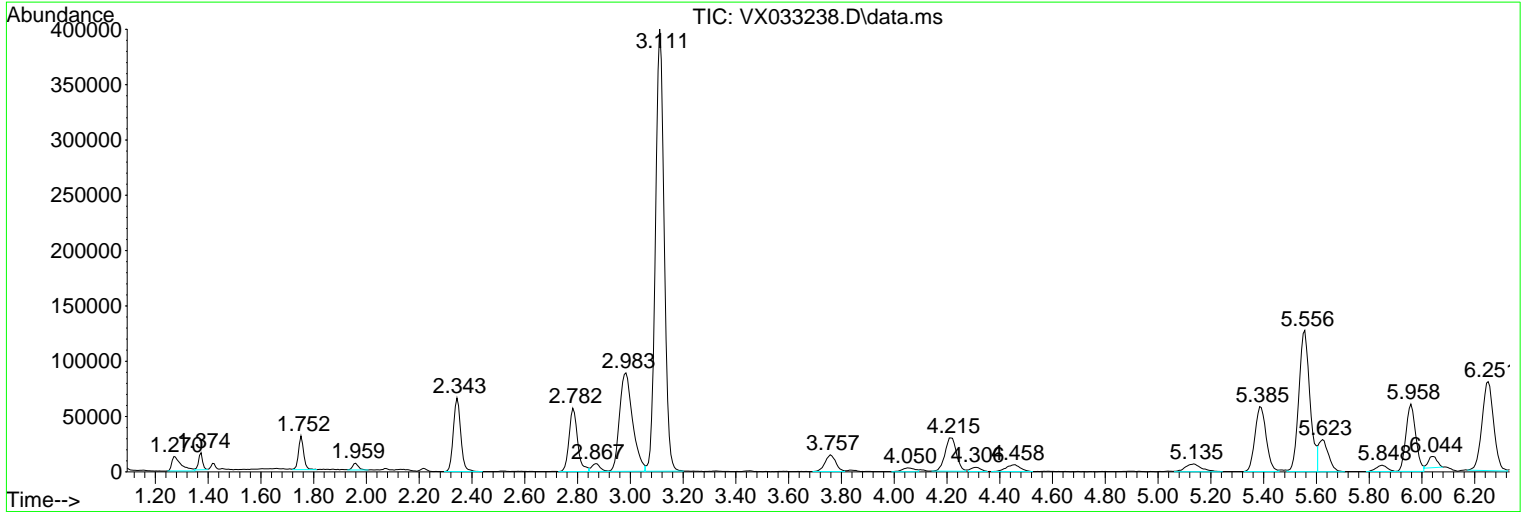
Sum of corrected areas: 6873937

Data Path : Z:\voasrv\HPCHEM1\MSVOA\_X\Data\VX120522\  
 Data File : VX033238.D  
 Acq On : 05 Dec 2022 20:04  
 Operator : JC/MD  
 Sample : N5875-04  
 Misc : 5.0mL/MSVOA\_X/WATER  
 ALS Vial : 23 Sample Multiplier: 1

Instrument :  
 MSVOA\_X  
 ClientSampleId :  
 MW-38D

Quant Method : Z:\voasrv\HPCHEM1\MSVOA\_X\Method\82X112222W.M  
 Quant Title : SW846 8260

TIC Library : C:\Database\NIST20.L  
 TIC Integration Parameters: LSCINT.P



Data Path : Z:\voasrv\HPCHEM1\MSVOA\_X\Data\VX120522\  
 Data File : VX033238.D  
 Acq On : 05 Dec 2022 20:04  
 Operator : JC/MD  
 Sample : N5875-04  
 Misc : 5.0mL/MSVOA\_X/WATER  
 ALS Vial : 23 Sample Multiplier: 1

Instrument :  
 MSVOA\_X  
 ClientSampleId :  
 MW-38D

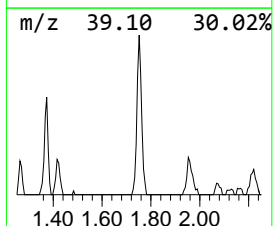
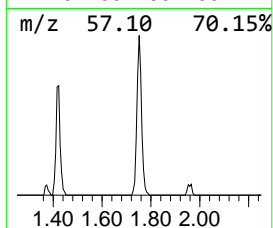
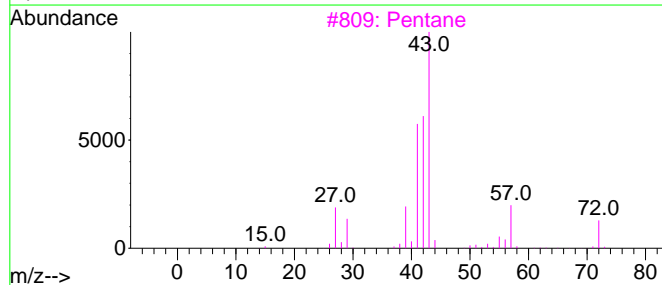
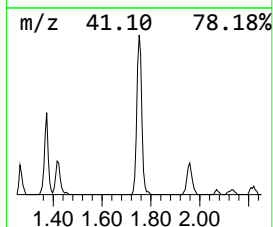
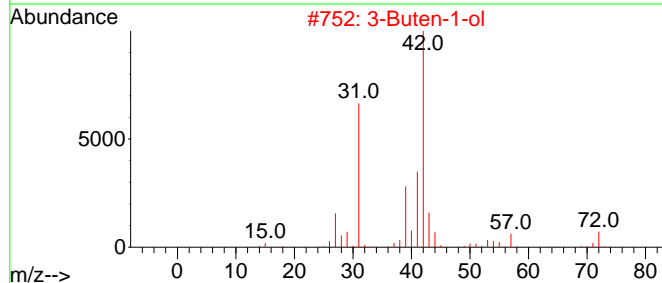
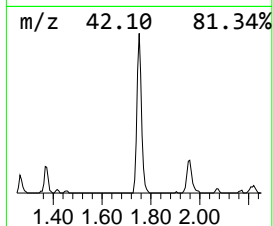
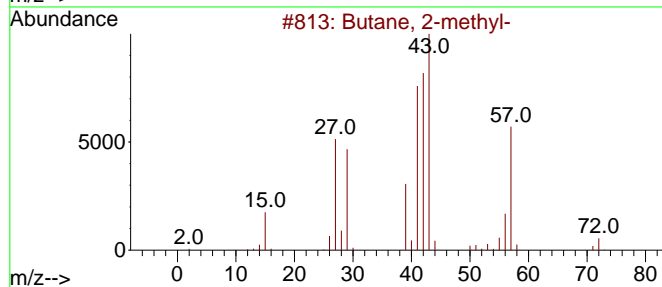
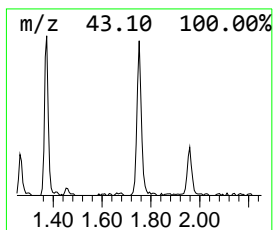
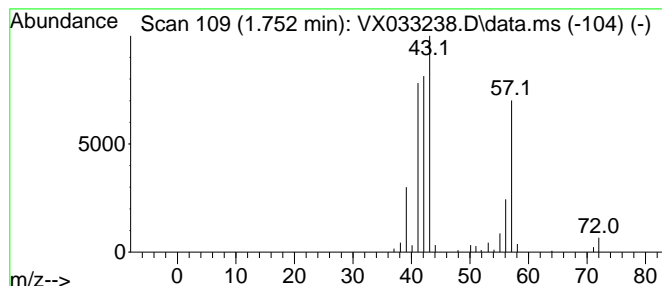
Quant Method : Z:\voasrv\HPCHEM1\MSVOA\_X\Method\82X112222W.M  
 Quant Title : SW846 8260

TIC Library : C:\Database\NIST20.L  
 TIC Integration Parameters: LSCINT.P

\*\*\*\*\*  
 Peak Number 1 Butane, 2-methyl- Concentration Rank 10

R.T.	EstConc	Area	Relative to ISTD	R.T.
1.752	5.46 ug/l	41282	Pentafluorobenzene	5.556

Hit#	of 5	Tentative ID	MW	MolForm	CAS#	Qual
1		Butane, 2-methyl-	72	C5H12	000078-78-4	90
2		3-Buten-1-ol	72	C4H8O	000627-27-0	47
3		Pentane	72	C5H12	000109-66-0	36
4		1-Propene, 2-methyl-	56	C4H8	000115-11-7	18
5		Azetidine	57	C3H7N	000503-29-7	9



Data Path : Z:\voasrv\HPCHEM1\MSVOA\_X\Data\VX120522\  
 Data File : VX033238.D  
 Acq On : 05 Dec 2022 20:04  
 Operator : JC/MD  
 Sample : N5875-04  
 Misc : 5.0mL/MSVOA\_X/WATER  
 ALS Vial : 23 Sample Multiplier: 1

Instrument :  
 MSVOA\_X  
 ClientSampleId :  
 MW-38D

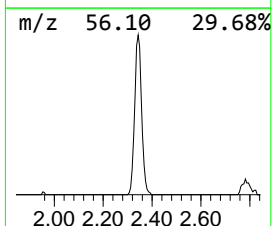
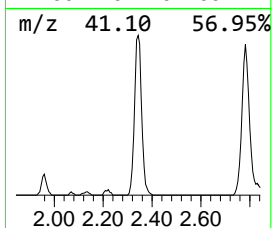
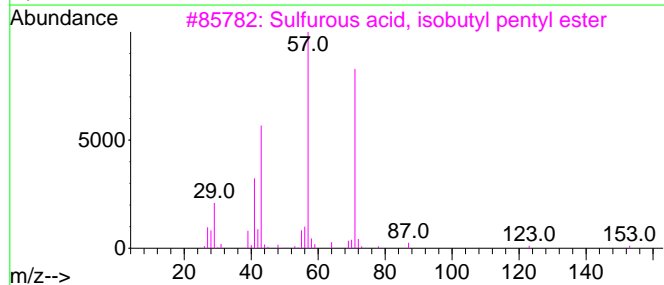
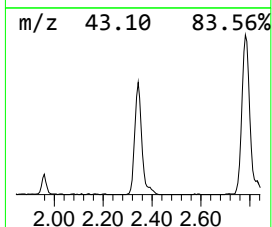
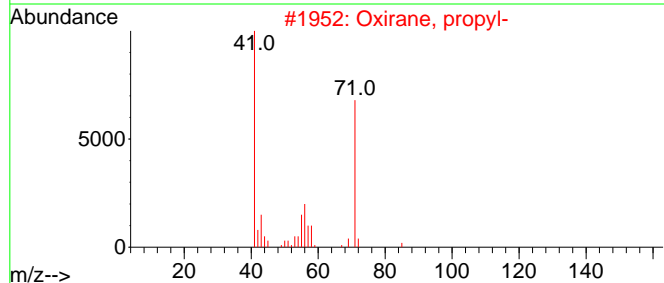
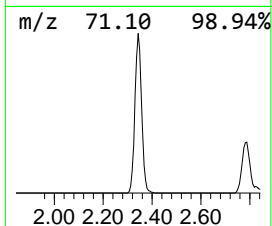
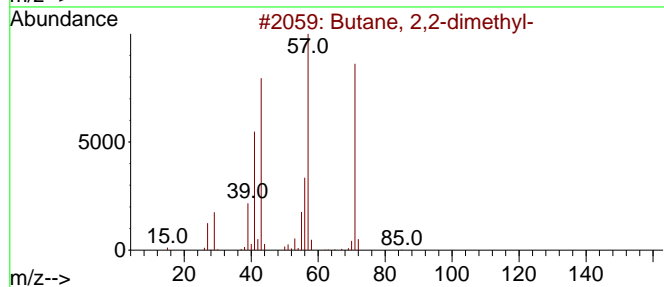
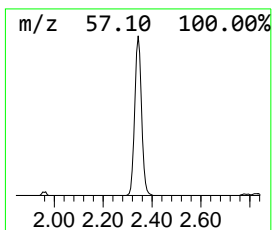
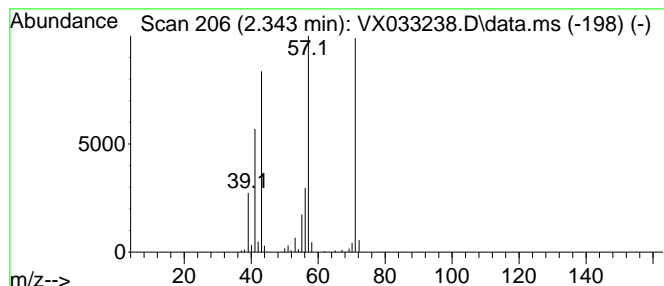
Quant Method : Z:\voasrv\HPCHEM1\MSVOA\_X\Method\82X11222W.M  
 Quant Title : SW846 8260

TIC Library : C:\Database\NIST20.L  
 TIC Integration Parameters: LSCINT.P

\*\*\*\*\*  
 Peak Number 2 Butane, 2,2-dimethyl- Concentration Rank 4

R.T.	EstConc	Area	Relative to ISTD	R.T.
2.343	17.24 ug/l	130325	Pentafluorobenzene	5.556

Hit#	of	5	Tentative ID	MW	MolForm	CAS#	Qual
1			Butane, 2,2-dimethyl-	86	C6H14	000075-83-2	90
2			Oxirane, propyl-	86	C5H10O	001003-14-1	59
3			Sulfurous acid, isobutyl pentyl ...	208	C9H20O3S	1000309-13-8	50
4			Propanoic acid, 2-methyl-, anhyd...	158	C8H14O3	000097-72-3	50
5			Oxalic acid, isobutyl pentyl ester	216	C11H20O4	1000309-37-0	43



Data Path : Z:\voasrv\HPCHEM1\MSVOA\_X\Data\VX120522\  
 Data File : VX033238.D  
 Acq On : 05 Dec 2022 20:04  
 Operator : JC/MD  
 Sample : N5875-04  
 Misc : 5.0mL/MSVOA\_X/WATER  
 ALS Vial : 23 Sample Multiplier: 1

Instrument :  
 MSVOA\_X  
 ClientSampleId :  
 MW-38D

Quant Method : Z:\voasrv\HPCHEM1\MSVOA\_X\Method\82X11222W.M  
 Quant Title : SW846 8260

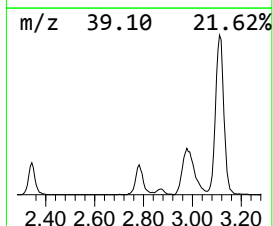
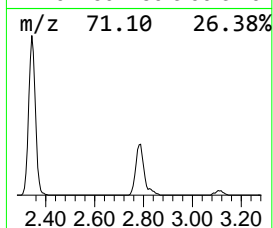
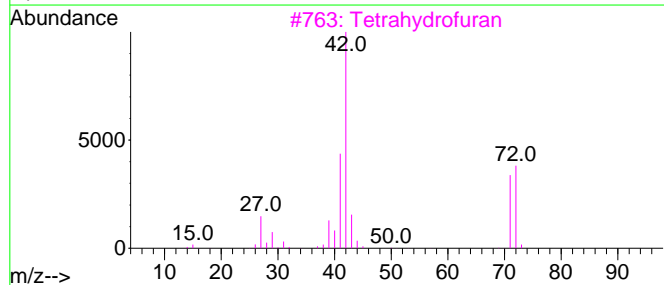
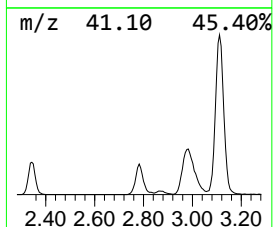
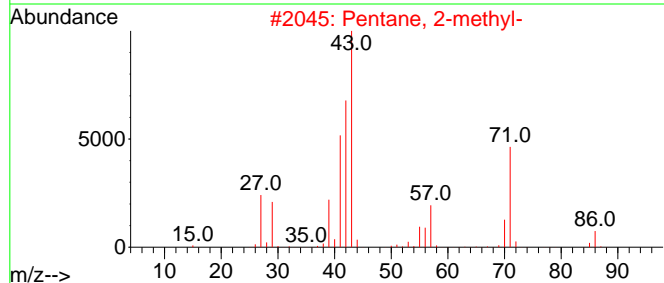
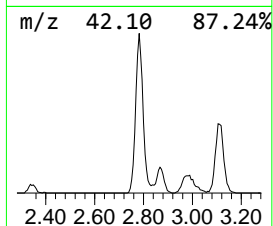
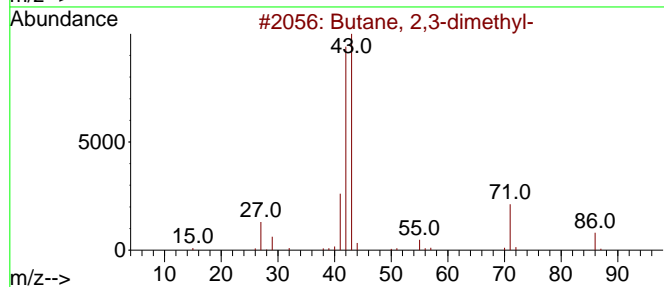
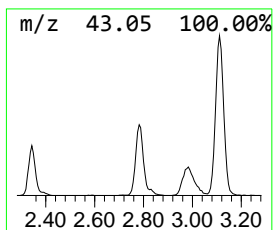
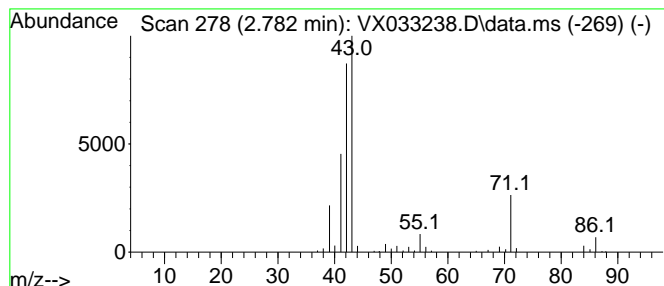
TIC Library : C:\Database\NIST20.L  
 TIC Integration Parameters: LSCINT.P

\*\*\*\*\*  
 Peak Number 3 Butane, 2,3-dimethyl- Concentration Rank 5

R.T.	EstConc	Area	Relative to ISTD	R.T.
2.782	17.07 ug/l	129063	Pentafluorobenzene	5.556

Hit#	of	Tentative ID	MW	MolForm	CAS#	Qual
1	5	Butane, 2,3-dimethyl-	86	C6H14	000079-29-8	86
2		Pentane, 2-methyl-	86	C6H14	000107-83-5	43
3		Tetrahydrofuran	72	C4H8O	000109-99-9	36
4		1-Pentene	70	C5H10	000109-67-1	25
5		C2H5C(CH3)2COCH3	114	C7H14O	020669-04-9	12



Data Path : Z:\voasrv\HPCHEM1\MSVOA\_X\Data\VX120522\  
 Data File : VX033238.D  
 Acq On : 05 Dec 2022 20:04  
 Operator : JC/MD  
 Sample : N5875-04  
 Misc : 5.0mL/MSVOA\_X/WATER  
 ALS Vial : 23 Sample Multiplier: 1

Instrument :  
 MSVOA\_X  
 ClientSampleId :  
 MW-38D

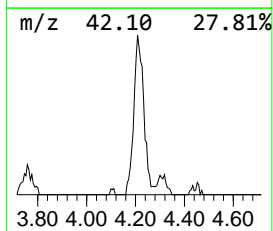
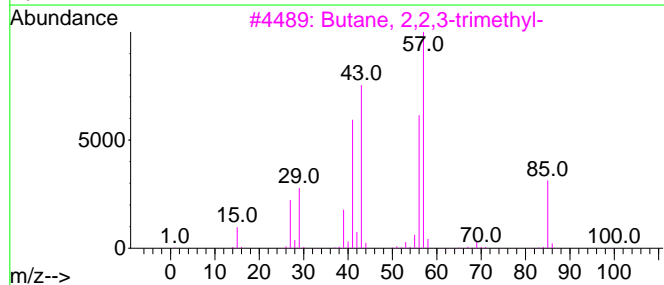
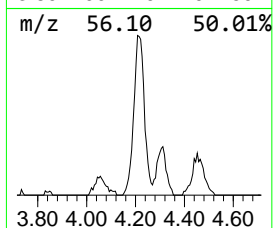
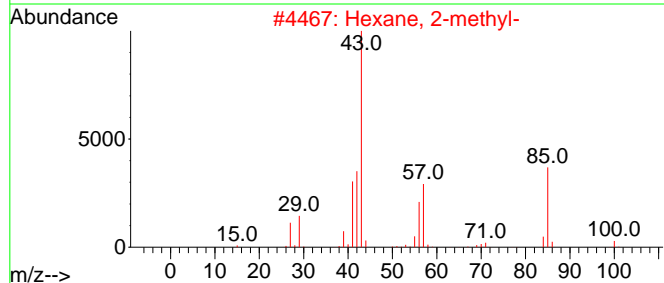
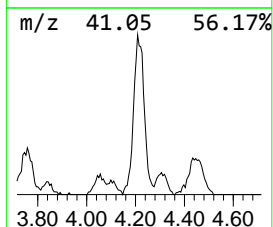
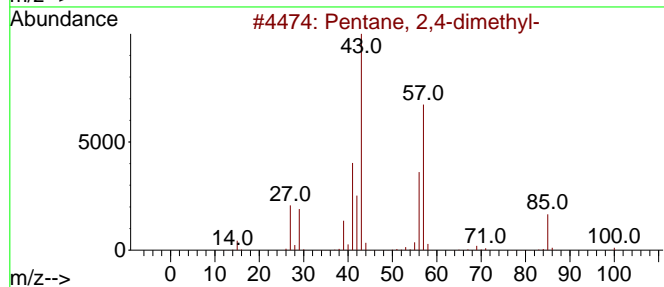
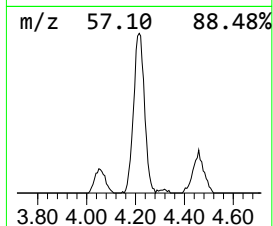
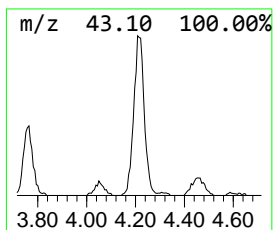
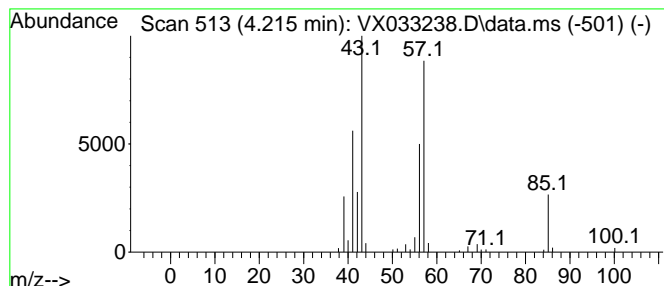
Quant Method : Z:\voasrv\HPCHEM1\MSVOA\_X\Method\82X11222W.M  
 Quant Title : SW846 8260

TIC Library : C:\Database\NIST0.L  
 TIC Integration Parameters: LSCINT.P

\*\*\*\*\*  
 Peak Number 4 Pentane, 2,4-dimethyl- Concentration Rank 7

R.T.	EstConc	Area	Relative to ISTD	R.T.
4.215	12.01 ug/l	90760	Pentafluorobenzene	5.556

Hit#	of 5	Tentative ID	MW	MolForm	CAS#	Qual
1		Pentane, 2,4-dimethyl-	100	C7H16	000108-08-7	91
2		Hexane, 2-methyl-	100	C7H16	000591-76-4	72
3		Butane, 2,2,3-trimethyl-	100	C7H16	000464-06-2	59
4		Pentane, 2,2-dimethyl-	100	C7H16	000590-35-2	50
5		2-Ethyl-oxetane	86	C5H10O	1010386-40-2	50





Data Path : Z:\voasrv\HPCHEM1\MSVOA\_X\Data\VX120522\  
 Data File : VX033238.D  
 Acq On : 05 Dec 2022 20:04  
 Operator : JC/MD  
 Sample : N5875-04  
 Misc : 5.0mL/MSVOA\_X/WATER  
 ALS Vial : 23 Sample Multiplier: 1

Instrument :  
 MSVOA\_X  
 ClientSampleId :  
 MW-38D

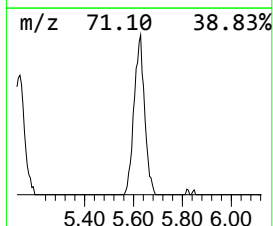
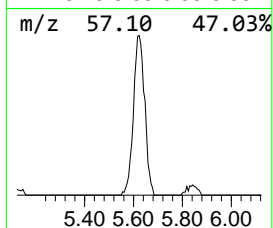
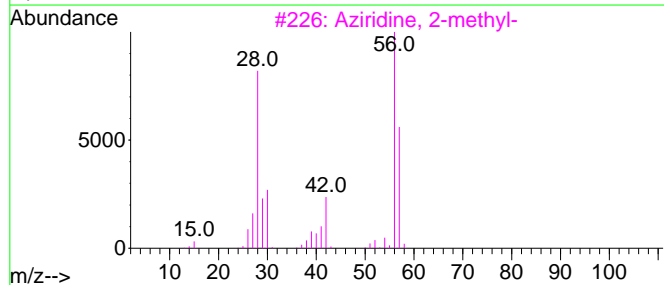
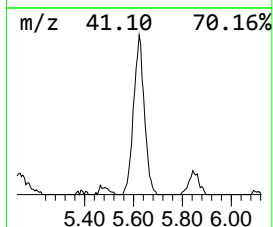
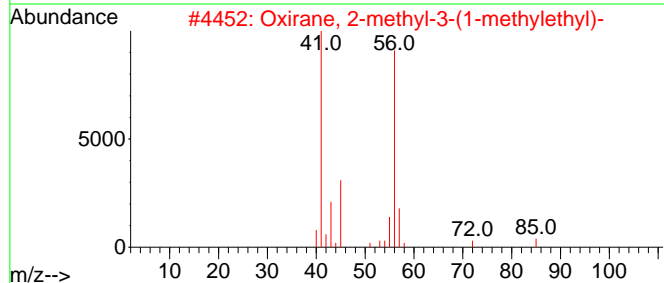
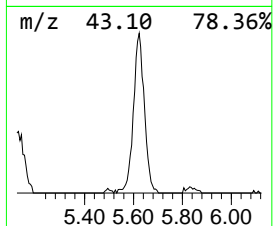
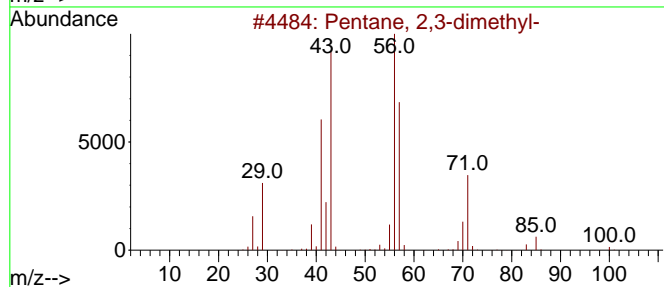
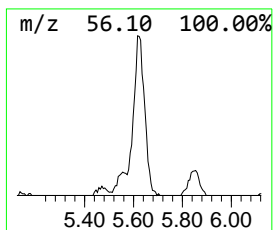
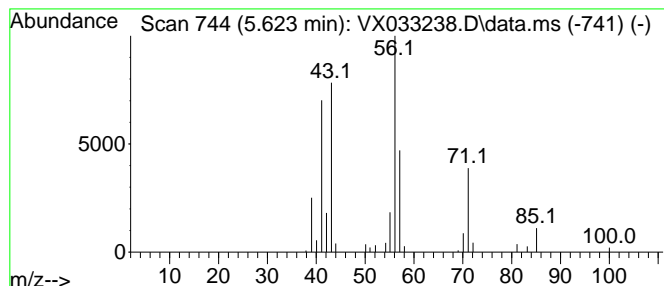
Quant Method : Z:\voasrv\HPCHEM1\MSVOA\_X\Method\82X112222W.M  
 Quant Title : SW846 8260

TIC Library : C:\Database\NIST20.L  
 TIC Integration Parameters: LSCINT.P

\*\*\*\*\*  
 Peak Number 5 Pentane, 2,3-dimethyl- Concentration Rank 9

R.T.	EstConc	Area	Relative to ISTD	R.T.
5.623	9.32 ug/l	70425	Pentafluorobenzene	5.556

Hit#	of	Tentative ID	MW	MolForm	CAS#	Qual
1	5	Pentane, 2,3-dimethyl-	100	C7H16	000565-59-3	80
2		Oxirane, 2-methyl-3-(1-methyleth...	100	C6H12O	001192-31-0	47
3		Aziridine, 2-methyl-	57	C3H7N	000075-55-8	38
4		Cyanic acid, propyl ester	85	C4H7NO	001768-36-1	38
5		Pentanal, 3-methyl-	100	C6H12O	015877-57-3	33



Data Path : Z:\voasrv\HPCHEM1\MSVOA\_X\Data\VX120522\  
 Data File : VX033238.D  
 Acq On : 05 Dec 2022 20:04  
 Operator : JC/MD  
 Sample : N5875-04  
 Misc : 5.0mL/MSVOA\_X/WATER  
 ALS Vial : 23 Sample Multiplier: 1

Instrument :  
 MSVOA\_X  
 ClientSampleId :  
 MW-38D

Quant Method : Z:\voasrv\HPCHEM1\MSVOA\_X\Method\82X112222W.M  
 Quant Title : SW846 8260

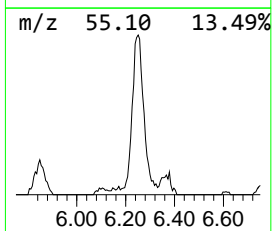
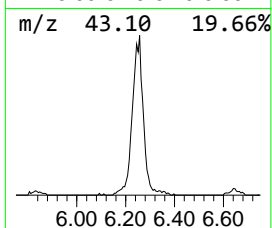
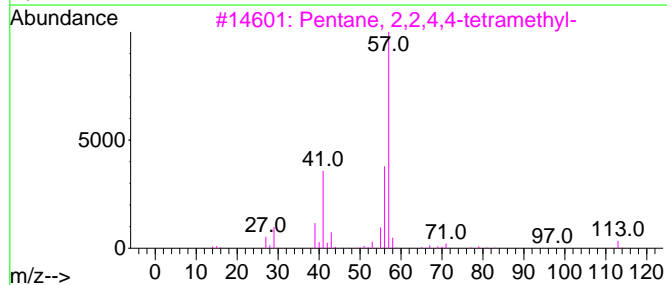
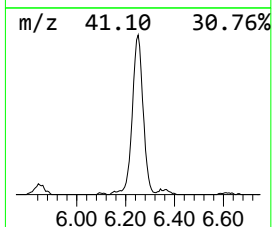
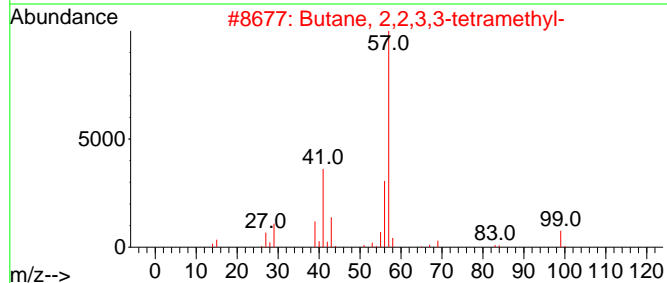
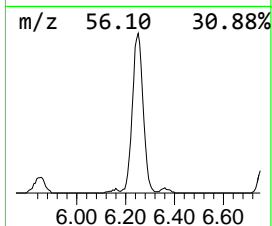
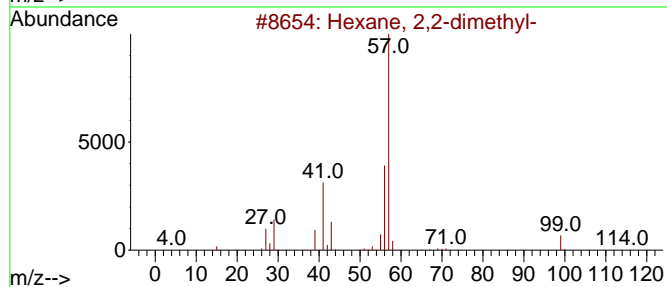
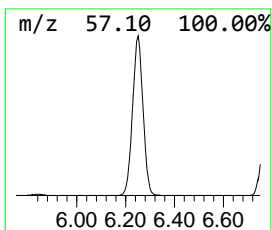
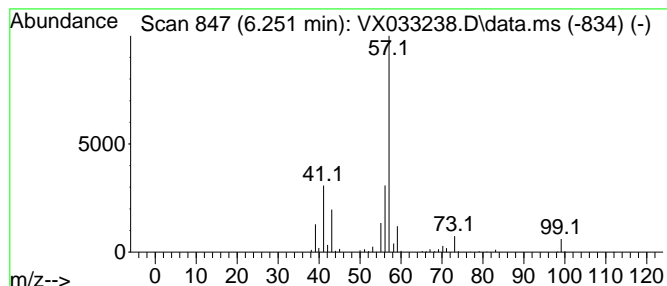
TIC Library : C:\Database\NIST20.L  
 TIC Integration Parameters: LSCINT.P

\*\*\*\*\*  
 Peak Number 6 Hexane, 2,2-dimethyl- Concentration Rank 2

R.T.	EstConc	Area	Relative to ISTD	R.T.
6.251	27.32 ug/l	246465	1,4-Difluorobenzene	6.763

Hit#	of	5	Tentative ID	MW	MolForm	CAS#	Qual
1			Hexane, 2,2-dimethyl-	114	C8H18	000590-73-8	53
2			Butane, 2,2,3,3-tetramethyl-	114	C8H18	000594-82-1	53
3			Pentane, 2,2,4,4-tetramethyl-	128	C9H20	001070-87-7	47
4			Pentane, 2,2,4-trimethyl-	114	C8H18	000540-84-1	42
5			Hexane, 2,2,5,5-tetramethyl-	142	C10H22	001071-81-4	38



Data Path : Z:\voasrv\HPCHEM1\MSVOA\_X\Data\VX120522\  
 Data File : VX033238.D  
 Acq On : 05 Dec 2022 20:04  
 Operator : JC/MD  
 Sample : N5875-04  
 Misc : 5.0mL/MSVOA\_X/WATER  
 ALS Vial : 23 Sample Multiplier: 1

Instrument :  
 MSVOA\_X  
 ClientSampleId :  
 MW-38D

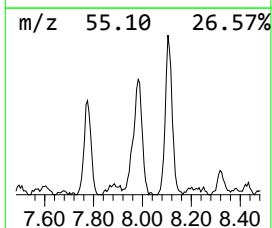
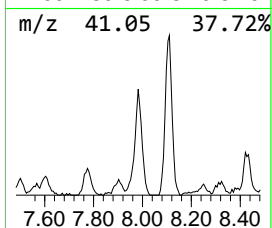
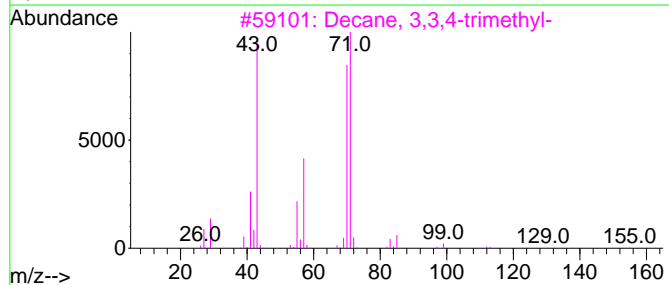
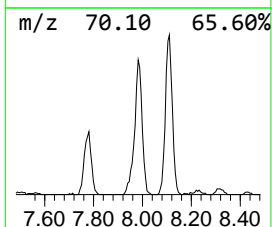
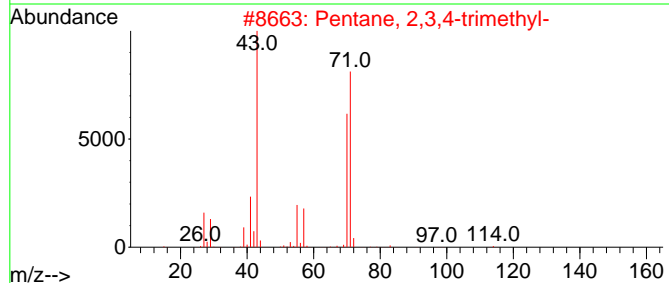
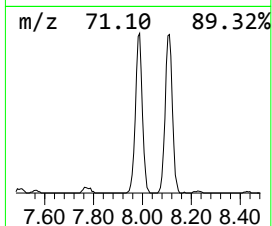
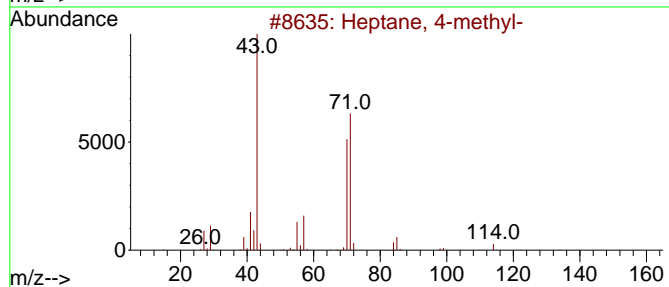
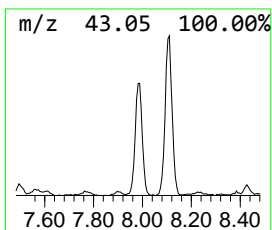
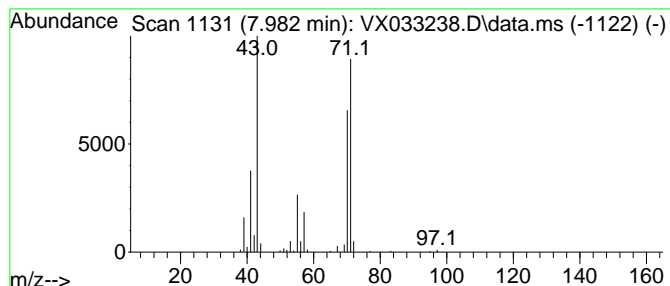
Quant Method : Z:\voasrv\HPCHEM1\MSVOA\_X\Method\82X11222W.M  
 Quant Title : SW846 8260

TIC Library : C:\Database\NIST20.L  
 TIC Integration Parameters: LSCINT.P

\*\*\*\*\*  
 Peak Number 7 Heptane, 4-methyl- Concentration Rank 6

R.T.	EstConc	Area	Relative to ISTD	R.T.
7.982	12.02 ug/l	108435	1,4-Difluorobenzene	6.763

Hit#	of 5	Tentative ID	MW	MolForm	CAS#	Qual
1		Heptane, 4-methyl-	114	C8H18	000589-53-7	83
2		Pentane, 2,3,4-trimethyl-	114	C8H18	000565-75-3	83
3		Decane, 3,3,4-trimethyl-	184	C13H28	049622-18-6	78
4		Pentane, 3-ethyl-	100	C7H16	000617-78-7	78
5		Pentane, 3,3-dimethyl-	100	C7H16	000562-49-2	72



Data Path : Z:\voasrv\HPCHEM1\MSVOA\_X\Data\VX120522\  
 Data File : VX033238.D  
 Acq On : 05 Dec 2022 20:04  
 Operator : JC/MD  
 Sample : N5875-04  
 Misc : 5.0mL/MSVOA\_X/WATER  
 ALS Vial : 23 Sample Multiplier: 1

Instrument :  
 MSVOA\_X  
 ClientSampleId :  
 MW-38D

Quant Method : Z:\voasrv\HPCHEM1\MSVOA\_X\Method\82X112222W.M  
 Quant Title : SW846 8260

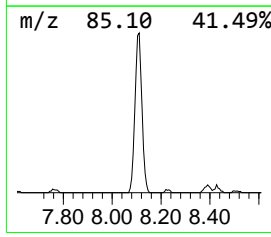
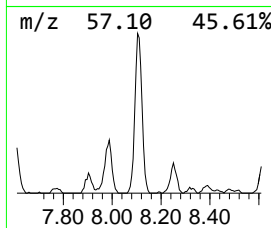
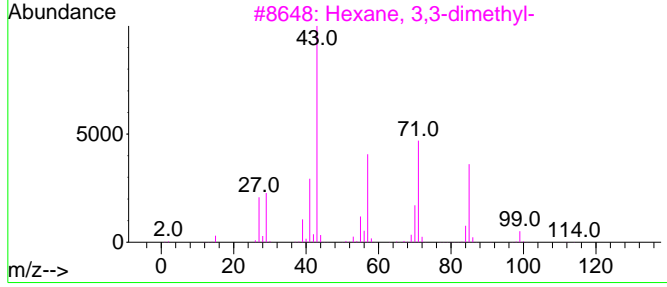
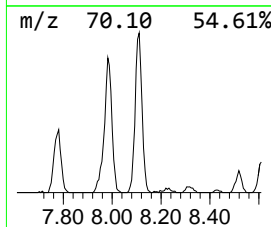
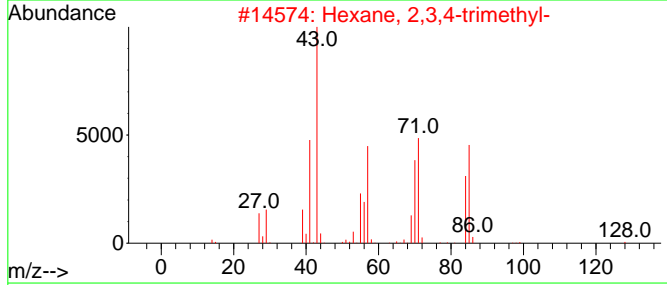
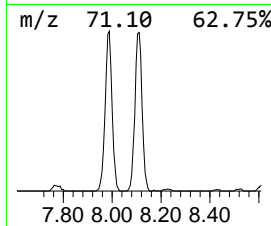
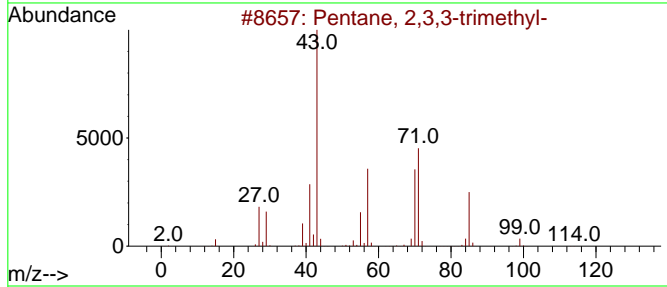
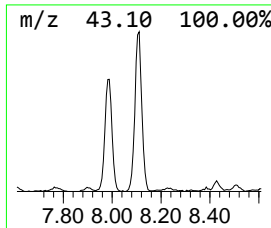
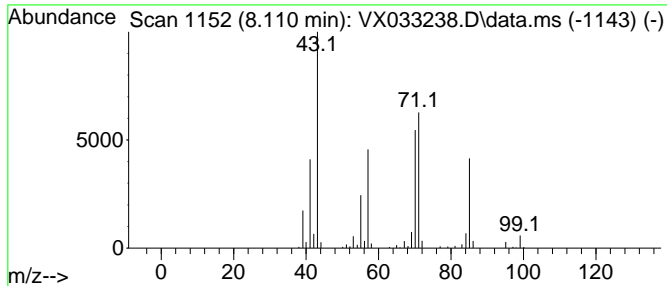
TIC Library : C:\Database\NIST20.L  
 TIC Integration Parameters: LSCINT.P

\*\*\*\*\*  
 Peak Number 8 Pentane, 2,3,3-trimethyl- Concentration Rank 3

R.T.	EstConc	Area	Relative to ISTD	R.T.
8.110	17.89 ug/l	161350	1,4-Difluorobenzene	6.763

Hit#	of	Tentative ID	MW	MolForm	CAS#	Qual
1	5	Pentane, 2,3,3-trimethyl-	114	C8H18	000560-21-4	90
2		Hexane, 2,3,4-trimethyl-	128	C9H20	000921-47-1	64
3		Hexane, 3,3-dimethyl-	114	C8H18	000563-16-6	64
4		Decane, 3,3,4-trimethyl-	184	C13H28	049622-18-6	50
5		Pentane, 2,3,4-trimethyl-	114	C8H18	000565-75-3	50



Data Path : Z:\voasrv\HPCHEM1\MSVOA\_X\Data\VX120522\  
 Data File : VX033238.D  
 Acq On : 05 Dec 2022 20:04  
 Operator : JC/MD  
 Sample : N5875-04  
 Misc : 5.0mL/MSVOA\_X/WATER  
 ALS Vial : 23 Sample Multiplier: 1

Instrument :  
 MSVOA\_X  
 ClientSampleId :  
 MW-38D

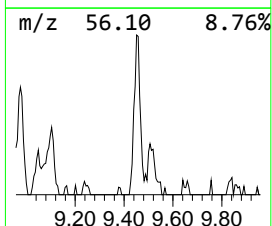
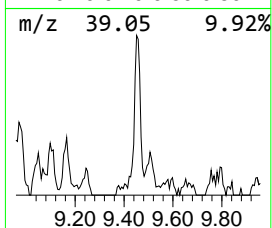
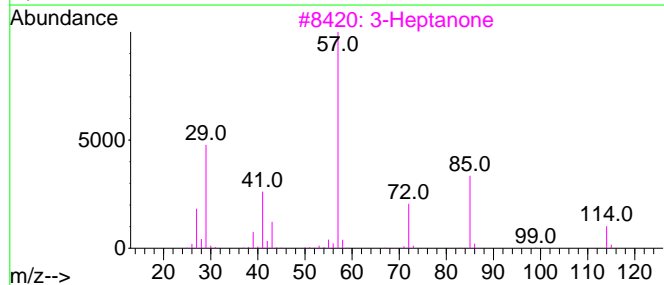
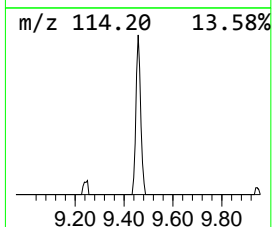
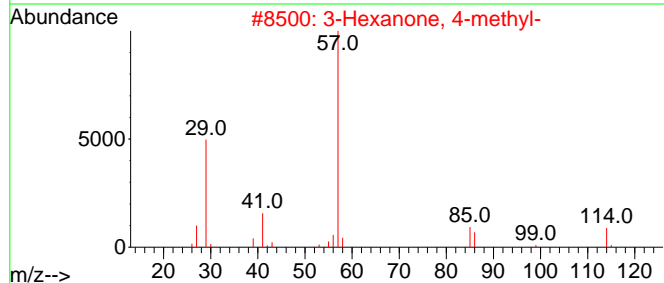
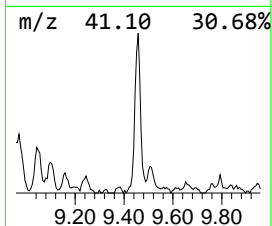
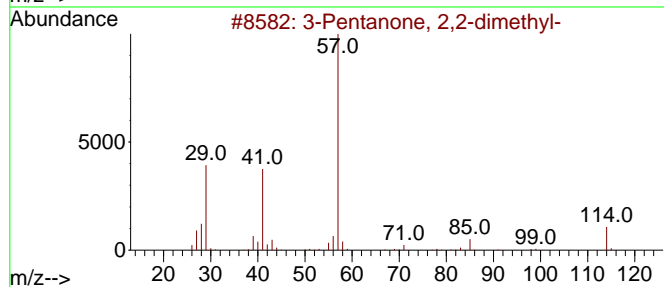
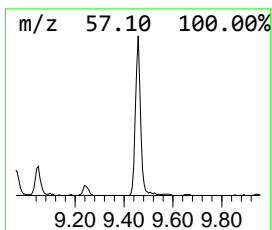
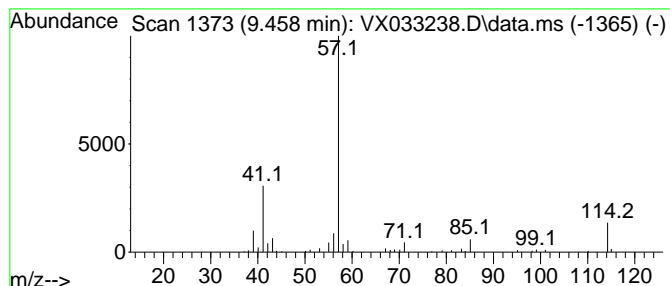
Quant Method : Z:\voasrv\HPCHEM1\MSVOA\_X\Method\82X112222W.M  
 Quant Title : SW846 8260

TIC Library : C:\Database\NIST0.L  
 TIC Integration Parameters: LSCINT.P

\*\*\*\*\*  
 Peak Number 9 3-Pentanone, 2,2-dimethyl- Concentration Rank 11

R.T.	EstConc	Area	Relative to ISTD	R.T.
9.458	5.24 ug/l	52673	Chlorobenzene-d5	10.055

Hit#	of 5	Tentative ID	MW	MolForm	CAS#	Qual
1		3-Pentanone, 2,2-dimethyl-	114	C7H14O	000564-04-5	72
2		3-Hexanone, 4-methyl-	114	C7H14O	017042-16-9	53
3		3-Heptanone	114	C7H14O	000106-35-4	50
4		3,4-Hexanedione	114	C6H10O2	004437-51-8	43
5		3-Hexanone, 5-methyl-	114	C7H14O	000623-56-3	42



Data Path : Z:\voasrv\HPCHEM1\MSVOA\_X\Data\VX120522\  
 Data File : VX033238.D  
 Acq On : 05 Dec 2022 20:04  
 Operator : JC/MD  
 Sample : N5875-04  
 Misc : 5.0mL/MSVOA\_X/WATER  
 ALS Vial : 23 Sample Multiplier: 1

Instrument :  
 MSVOA\_X  
 ClientSampleId :  
 MW-38D

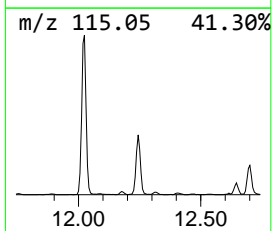
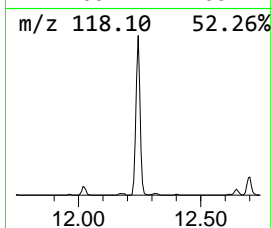
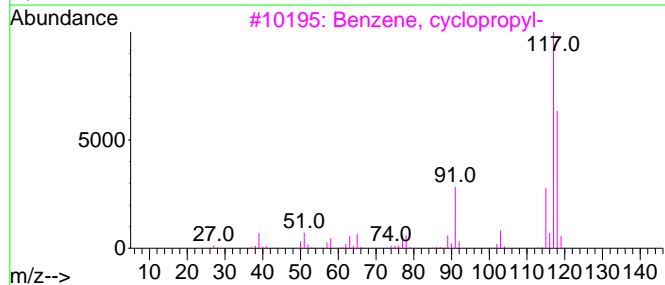
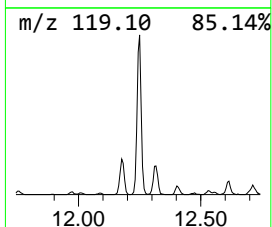
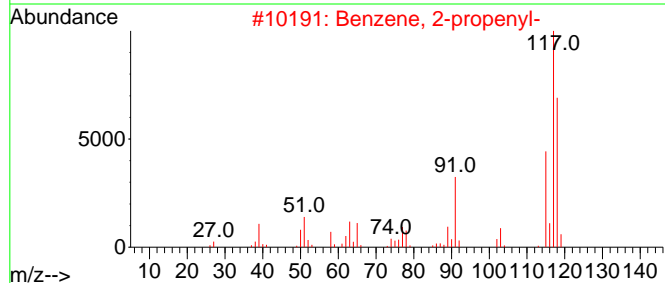
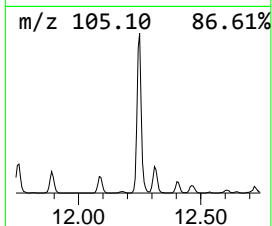
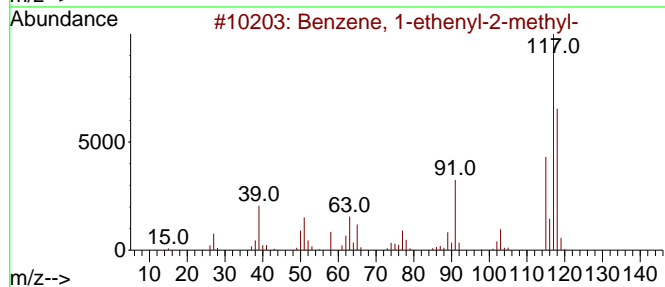
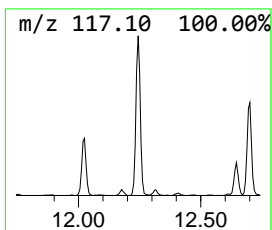
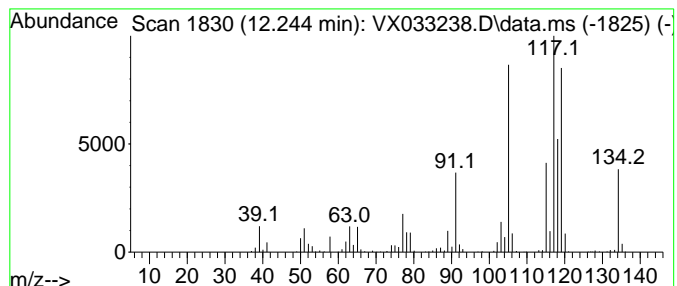
Quant Method : Z:\voasrv\HPCHEM1\MSVOA\_X\Method\82X112222W.M  
 Quant Title : SW846 8260

TIC Library : C:\Database\NIST20.L  
 TIC Integration Parameters: LSCINT.P

\*\*\*\*\*  
 Peak Number 10 Benzene, 1-ethenyl-2-methyl- Concentration Rank 1

R.T.	EstConc	Area	Relative to ISTD	R.T.
12.244	30.77 ug/l	303237	1,4-Dichlorobenzene-d4	12.024

Hit#	of 5	Tentative ID	MW	MolForm	CAS#	Qual
1		Benzene, 1-ethenyl-2-methyl-	118	C9H10	000611-15-4	89
2		Benzene, 2-propenyl-	118	C9H10	000300-57-2	83
3		Benzene, cyclopropyl-	118	C9H10	000873-49-4	83
4		Benzene, 1-ethenyl-4-methyl-	118	C9H10	000622-97-9	74
5		Benzene, 1,4-diethyl-	134	C10H14	000105-05-5	50



Data Path : Z:\voasrv\HPCHEM1\MSVOA\_X\Data\VX120522\  
 Data File : VX033238.D  
 Acq On : 05 Dec 2022 20:04  
 Operator : JC/MD  
 Sample : N5875-04  
 Misc : 5.0mL/MSVOA\_X/WATER  
 ALS Vial : 23 Sample Multiplier: 1

Instrument :  
 MSVOA\_X  
 ClientSampleId :  
 MW-38D

Quant Method : Z:\voasrv\HPCHEM1\MSVOA\_X\Method\82X112222W.M  
 Quant Title : SW846 8260

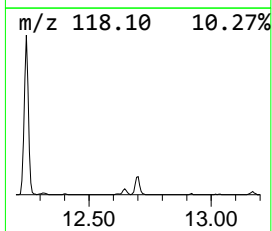
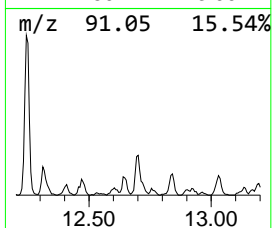
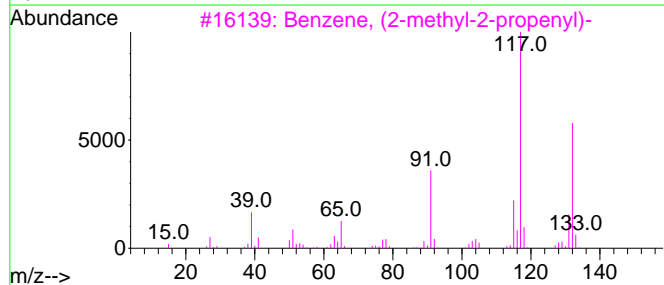
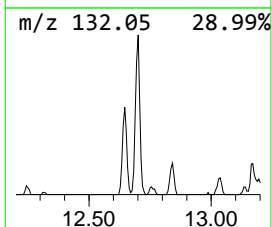
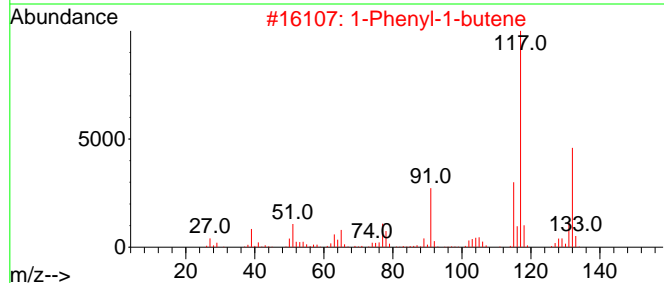
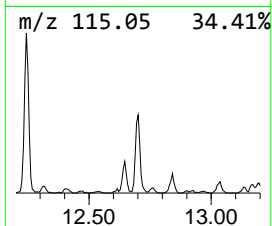
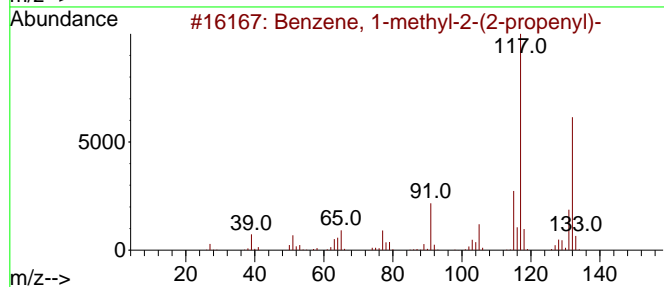
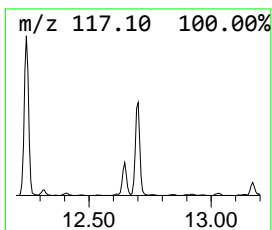
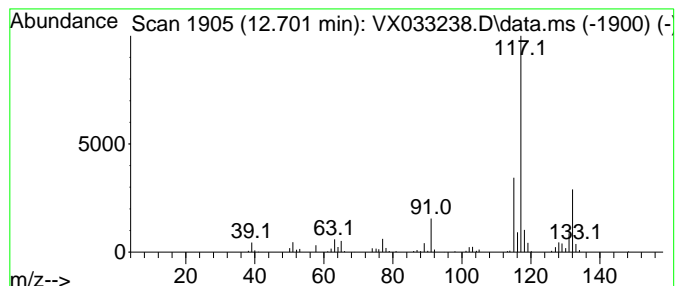
TIC Library : C:\Database\NIST20.L  
 TIC Integration Parameters: LSCINT.P

\*\*\*\*\*  
 Peak Number 11 Benzene, 1-methyl-2-(2-prop... Concentration Rank 8

R.T.	EstConc	Area	Relative to ISTD	R.T.
12.701	9.69 ug/l	95551	1,4-Dichlorobenzene-d4	12.024

Hit#	of 5	Tentative ID	MW	MolForm	CAS#	Qual
1		Benzene, 1-methyl-2-(2-propenyl)-	132	C10H12	001587-04-8	90
2		1-Phenyl-1-butene	132	C10H12	000824-90-8	90
3		Benzene, (2-methyl-2-propenyl)-	132	C10H12	003290-53-7	90
4		Benzene, 1-ethenyl-3-ethyl-	132	C10H12	007525-62-4	87
5		Indan, 1-methyl-	132	C10H12	000767-58-8	87



Data Path : Z:\voasrv\HPCHEM1\MSVOA\_X\Data\VX120522\  
 Data File : VX033238.D  
 Acq On : 05 Dec 2022 20:04  
 Operator : JC/MD  
 Sample : N5875-04  
 Misc : 5.0mL/MSVOA\_X/WATER  
 ALS Vial : 23 Sample Multiplier: 1

Instrument :  
 MSVOA\_X  
 ClientSampleId :  
 MW-38D

Quant Method : Z:\voasrv\HPCHEM1\MSVOA\_X\Method\82X112222W.M  
 Quant Title : SW846 8260

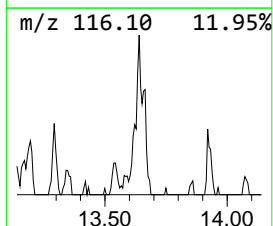
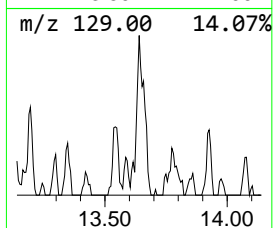
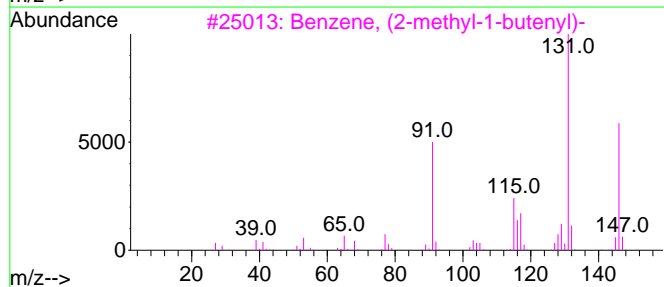
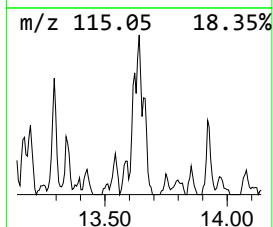
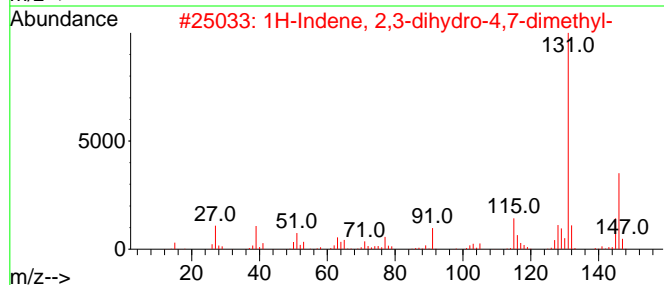
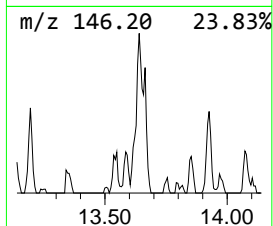
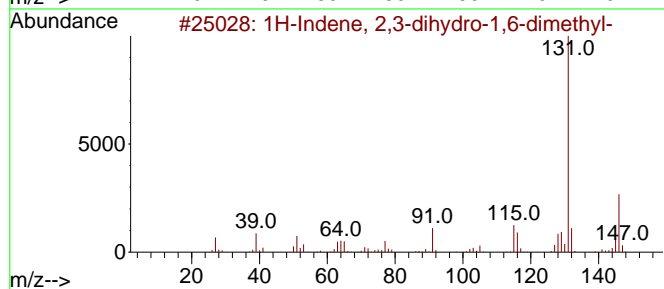
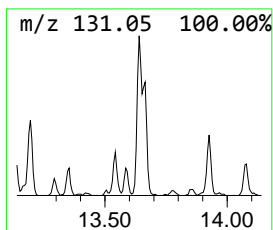
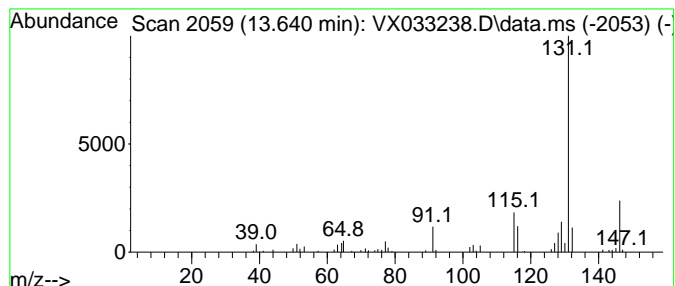
TIC Library : C:\Database\NIST20.L  
 TIC Integration Parameters: LSCINT.P

\*\*\*\*\*  
 Peak Number 12 1H-Indene, 2,3-dihydro-1,6-... Concentration Rank 12

R.T.	EstConc	Area	Relative to ISTD	R.T.
13.640	5.20 ug/l	51243	1,4-Dichlorobenzene-d4	12.024

Hit#	of 5	Tentative ID	MW	MolForm	CAS#	Qual
1		1H-Indene, 2,3-dihydro-1,6-dimet...	146	C11H14	017059-48-2	91
2		1H-Indene, 2,3-dihydro-4,7-dimet...	146	C11H14	006682-71-9	91
3		Benzene, (2-methyl-1-butenyl)-	146	C11H14	056253-64-6	91
4		1H-Indene, 2,3-dihydro-1,3-dimet...	146	C11H14	004175-53-5	90
5		1H-Indene, 2,3-dihydro-5,6-dimet...	146	C11H14	001075-22-5	90





Data Path : Z:\voasrv\HPCHEM1\MSVOA\_X\Data\VX120522\  
 Data File : VX033238.D  
 Acq On : 05 Dec 2022 20:04  
 Operator : JC/MD  
 Sample : N5875-04  
 Misc : 5.0mL/MSVOA\_X/WATER  
 ALS Vial : 23 Sample Multiplier: 1

Instrument :  
 MSVOA\_X  
 ClientSampleId :  
 MW-38D

Quant Method : Z:\voasrv\HPCHEM1\MSVOA\_X\Method\82X112222W.M  
 Quant Title : SW846 8260

TIC Library : C:\Database\NIST0.L  
 TIC Integration Parameters: LSCINT.P

TIC Top Hit name	RT	EstConc	Units	Response	--Internal Standard--			
					#	RT	Resp	Conc
Butane, 2-methyl-	1.752	5.5	ug/l	41282	1	5.556	377952	50.0
Butane, 2,2-dim...	2.343	17.2	ug/l	130325	1	5.556	377952	50.0
Butane, 2,3-dim...	2.782	17.1	ug/l	129063	1	5.556	377952	50.0
Pentane, 2,4-di...	4.215	12.0	ug/l	90760	1	5.556	377952	50.0
Pentane, 2,3-di...	5.623	9.3	ug/l	70425	1	5.556	377952	50.0
Hexane, 2,2-dim...	6.251	27.3	ug/l	246465	2	6.763	451008	50.0
Heptane, 4-methyl-	7.982	12.0	ug/l	108435	2	6.763	451008	50.0
Pentane, 2,3,3-...	8.110	17.9	ug/l	161350	2	6.763	451008	50.0
3-Pentanone, 2,...	9.458	5.2	ug/l	52673	3	10.055	502406	50.0
Benzene, 1-ethe...	12.244	30.8	ug/l	303237	4	12.024	492792	50.0
Benzene, 1-meth...	12.701	9.7	ug/l	95551	4	12.024	492792	50.0
1H-Indene, 2,3-...	13.640	5.2	ug/l	51243	4	12.024	492792	50.0