

Data Path : Z:\voasrv\HPCHEM1\MSVOA_X\Data\VX120621\
 Data File : VX025542.D
 Acq On : 06 Dec 2021 12:34
 Operator : JC/MD
 Sample : M4924-06DL 5X
 Misc : 5.0mL/MSVOA_X/WATER
 ALS Vial : 7 Sample Multiplier: 1

Instrument :
 MSVOA_X
 ClientSampleId :

Quant Time: Dec 07 05:57:47 2021
 Quant Method : Z:\voasrv\HPCHEM1\MSVOA_X\Method\82X111721W.M
 Quant Title : SW846 8260
 QLast Update : Wed Nov 17 15:36:16 2021
 Response via : Initial Calibration

Compound	R.T.	QIon	Response	Conc	Units	Dev(Min)

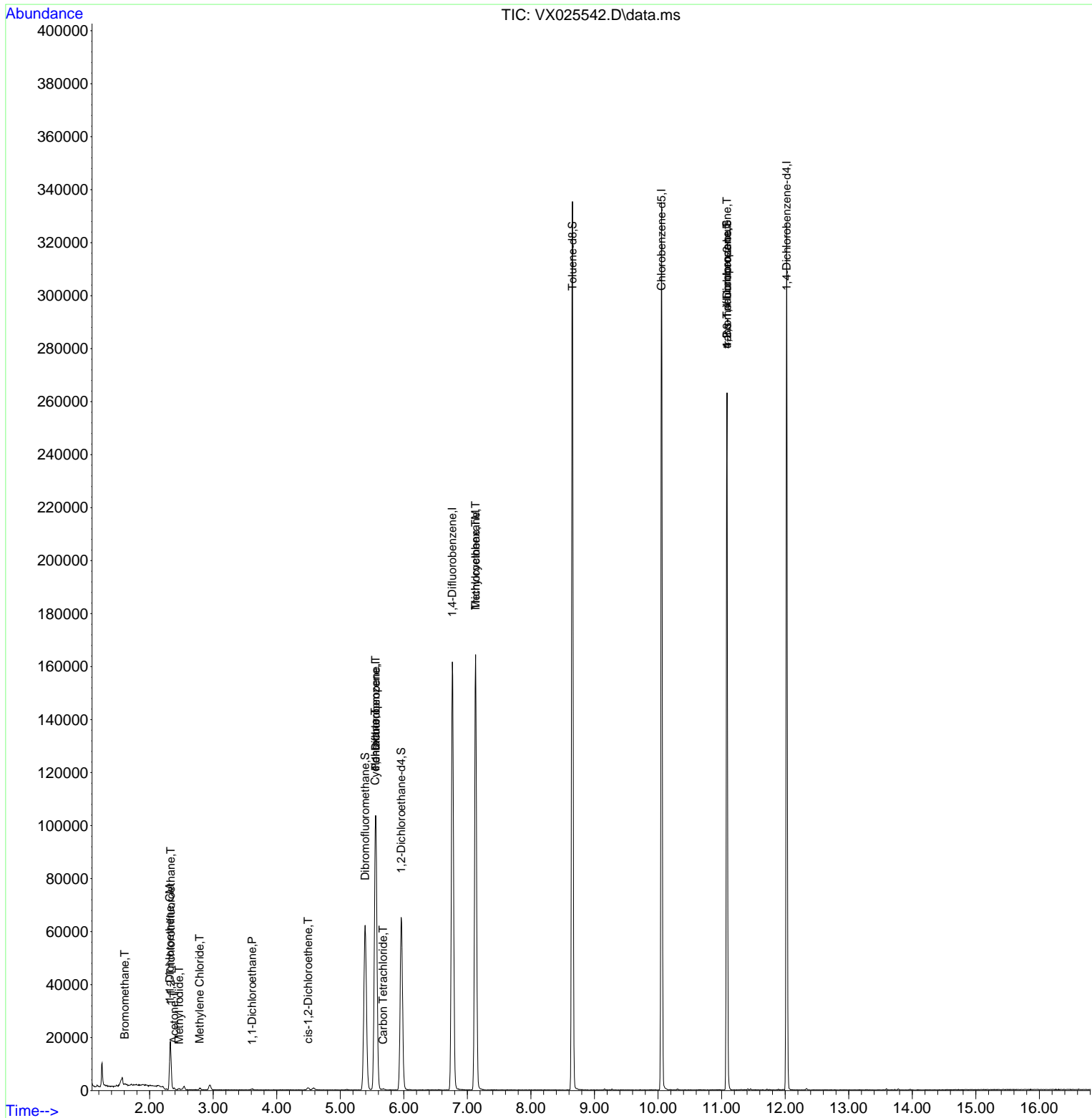
Internal Standards						
1) Pentafluorobenzene	5.556	168	105550	50.000	ug/l	0.00
34) 1,4-Difluorobenzene	6.763	114	173966	50.000	ug/l	0.00
63) Chlorobenzene-d5	10.055	117	153899	50.000	ug/l	0.00
72) 1,4-Dichlorobenzene-d4	12.024	152	68083	50.000	ug/l	0.00
System Monitoring Compounds						
33) 1,2-Dichloroethane-d4	5.958	65	60891	54.730	ug/l	0.00
Spiked Amount	50.000	Range 78 - 117	Recovery	=	109.460%	
35) Dibromofluoromethane	5.391	113	53315	49.949	ug/l	0.00
Spiked Amount	50.000	Range 75 - 124	Recovery	=	99.900%	
50) Toluene-d8	8.653	98	200106	49.861	ug/l	0.00
Spiked Amount	50.000	Range 92 - 112	Recovery	=	99.720%	
62) 4-Bromofluorobenzene	11.085	95	68418	45.063	ug/l	0.00
Spiked Amount	50.000	Range 83 - 123	Recovery	=	90.120%	
Target Compounds						
						Qvalue
5) Bromomethane	1.605	94	273	0.511	ug/l #	71
9) 1,1,2-Trichlorotrifluo...	2.331	101	4165	4.240	ug/l	99
10) Methyl Iodide	2.465	142	543	0.442	ug/l #	78
11) Tert butyl alcohol	2.946	59	1223	Below Cal	#	72
12) 1,1-Dichloroethene	2.319	96	3100	3.169	ug/l	90
16) Acetone	2.386	43	662	1.071	ug/l	89
20) Methylene Chloride	2.788	84	352	0.303	ug/l #	76
24) 1,1-Dichloroethane	3.611	63	543	0.295	ug/l #	83
27) cis-1,2-Dichloroethene	4.495	96	631	0.504	ug/l	91
31) Cyclohexane	5.550	56	1896	1.103	ug/l #	1
36) 1,1-Dichloropropene	5.556	75	7146	4.708	ug/l #	50
38) Carbon Tetrachloride	5.672	117	497	0.297	ug/l #	69
39) Methylcyclohexane	7.129	83	739	0.380	ug/l #	1
44) Trichloroethene	7.129	130	65566	49.089	ug/l	93
76) 1,2,3-Trichloropropane	11.085	75	33599	24.099	ug/l #	37
81) trans-1,4-Dichloro-2-b...	11.085	75	33599	60.710	ug/l #	9
95) Naphthalene	13.780	128	431	Below Cal	#	69

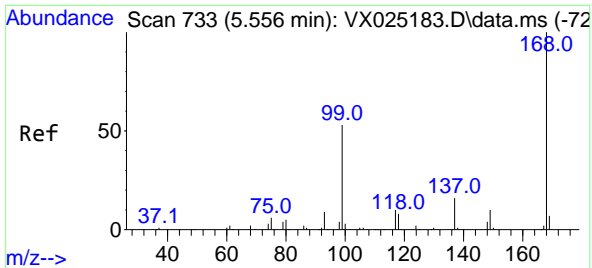
(#) = qualifier out of range (m) = manual integration (+) = signals summed

Data Path : Z:\voasrv\HPCHEM1\MSVOA_X\Data\VX120621\
 Data File : VX025542.D
 Acq On : 06 Dec 2021 12:34
 Operator : JC/MD
 Sample : M4924-06DL 5X
 Misc : 5.0mL/MSVOA_X/WATER
 ALS Vial : 7 Sample Multiplier: 1

Instrument :
 MSVOA_X
 ClientSampleId :

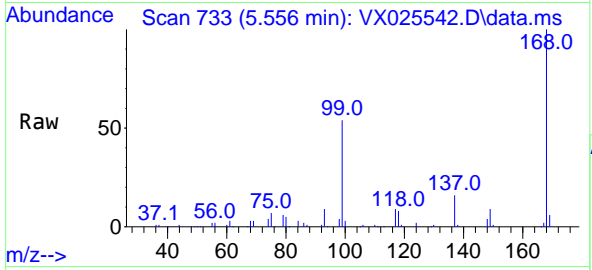
Quant Time: Dec 07 05:57:47 2021
 Quant Method : Z:\voasrv\HPCHEM1\MSVOA_X\Method\82X111721W.M
 Quant Title : SW846 8260
 QLast Update : Wed Nov 17 15:36:16 2021
 Response via : Initial Calibration



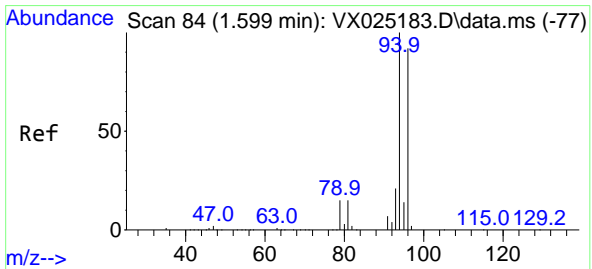
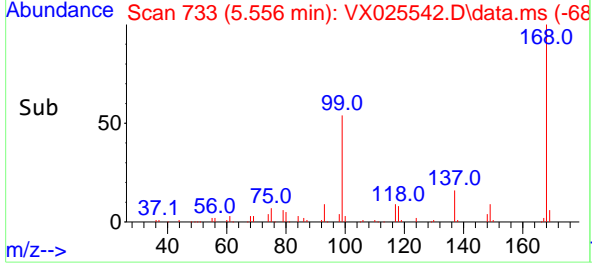
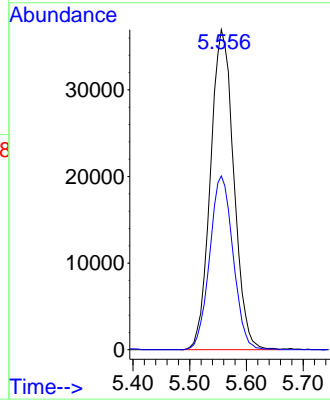


#1
 Pentafluorobenzene
 Concen: 50.000 ug/l
 RT: 5.556 min Scan# 71
 Delta R.T. -0.000 min
 Lab File: VX025542.D
 Acq: 06 Dec 2021 12:34

Instrument : MSVOA_X
 ClientSampleId :

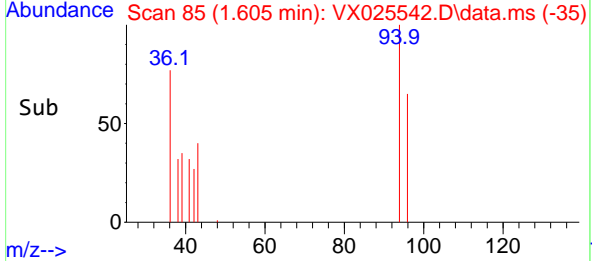
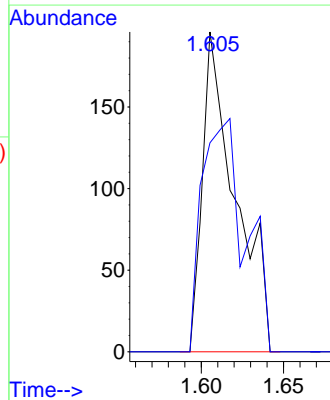
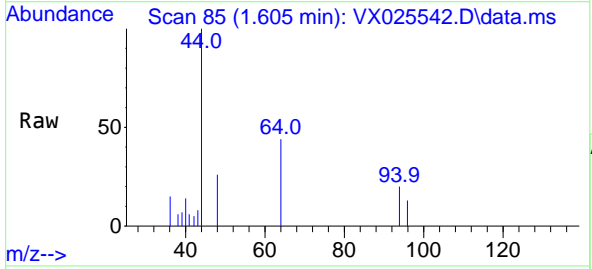


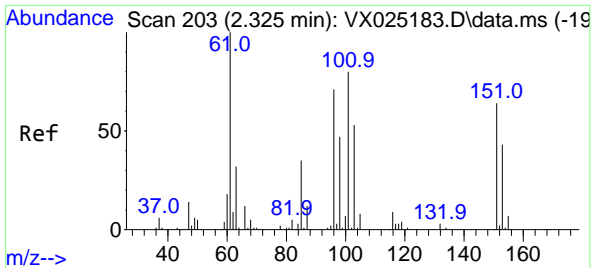
Tgt Ion:168 Resp: 105550
 Ion Ratio Lower Upper
 168 100
 99 54.3 46.4 69.6



#5
 Bromomethane
 Concen: 0.511 ug/l
 RT: 1.605 min Scan# 85
 Delta R.T. 0.006 min
 Lab File: VX025542.D
 Acq: 06 Dec 2021 12:34

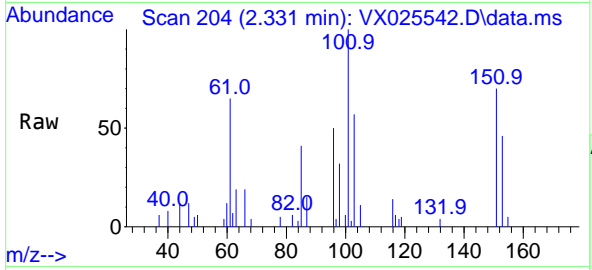
Tgt Ion: 94 Resp: 273
 Ion Ratio Lower Upper
 94 100
 96 65.3 74.8 112.2#





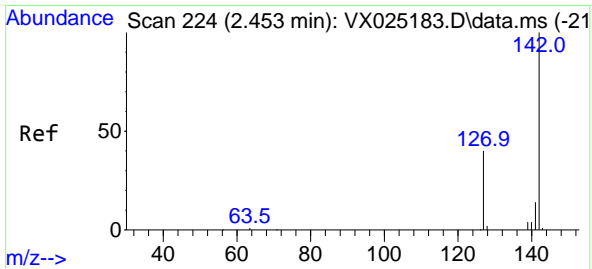
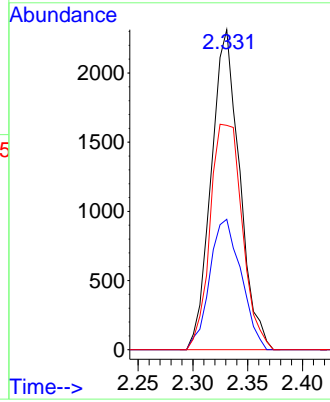
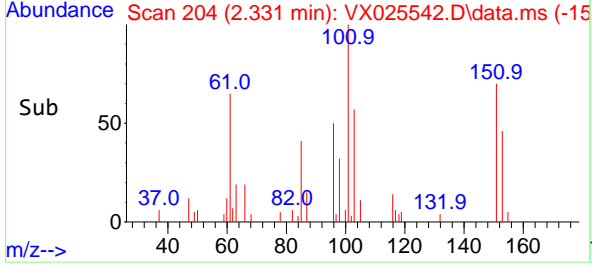
#9
 1,1,2-Trichlorotrifluoroethane
 Concen: 4.240 ug/l
 RT: 2.331 min Scan# 203
 Delta R.T. 0.006 min
 Lab File: VX025542.D
 Acq: 06 Dec 2021 12:34

Instrument : MSVOA_X
 ClientSampleId :

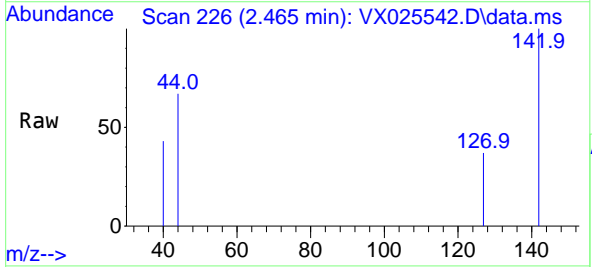


Tgt Ion:101 Resp: 4165

Ion	Ratio	Lower	Upper
101	100		
85	45.1	35.9	53.9
151	79.9	64.4	96.6

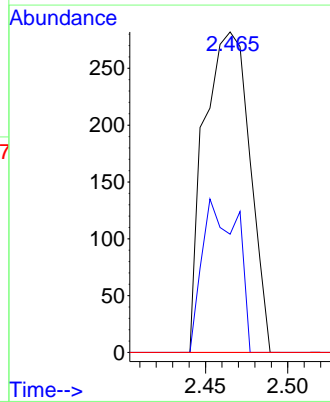
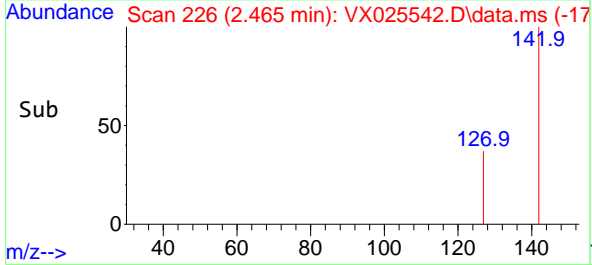


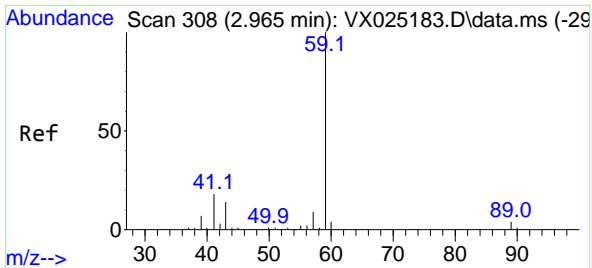
#10
 Methyl Iodide
 Concen: 0.442 ug/l
 RT: 2.465 min Scan# 226
 Delta R.T. 0.012 min
 Lab File: VX025542.D
 Acq: 06 Dec 2021 12:34



Tgt Ion:142 Resp: 543

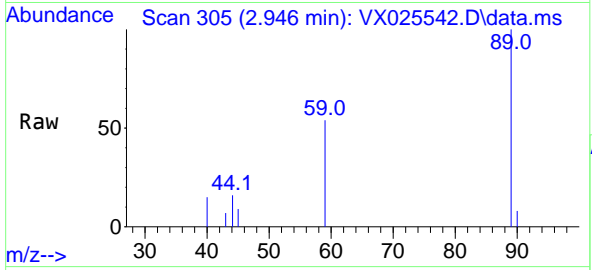
Ion	Ratio	Lower	Upper
142	100		
127	36.8	38.9	58.3#
141	0.0	11.7	17.5#



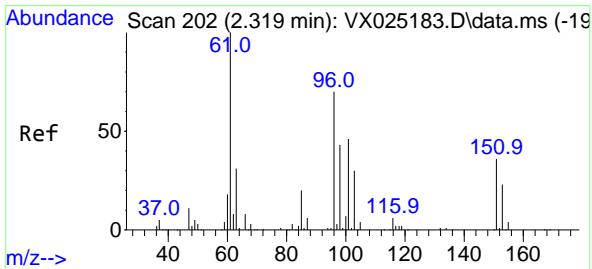
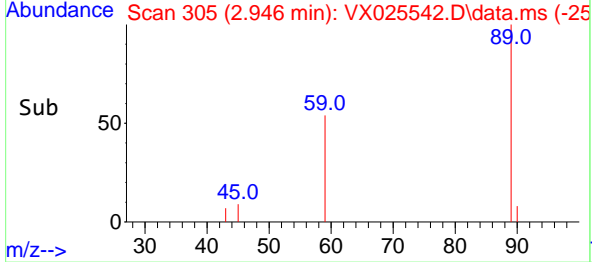
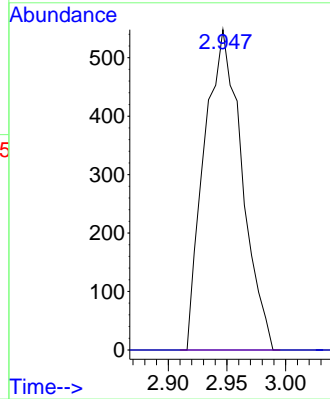


#11
 Tert butyl alcohol
 Concen: Below Cal
 RT: 2.946 min Scan# 308
 Delta R.T. -0.018 min
 Lab File: VX025542.D
 Acq: 06 Dec 2021 12:34

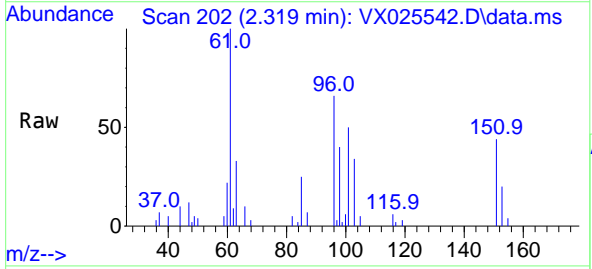
Instrument : MSVOA_X
 ClientSampleId :



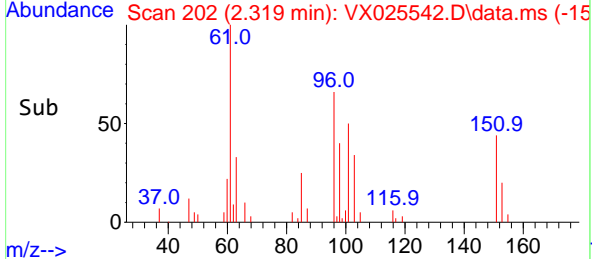
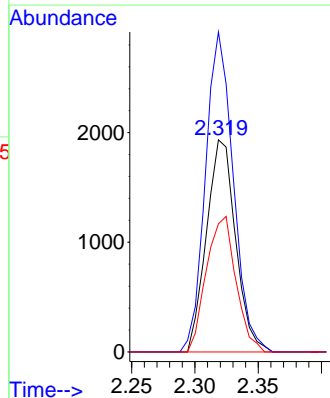
Tgt Ion: 59 Resp: 1223
 Ion Ratio Lower Upper
 59 100
 57 0.0 8.5 12.7#

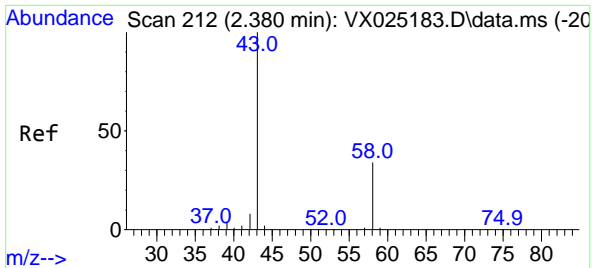


#12
 1,1-Dichloroethene
 Concen: 3.169 ug/l
 RT: 2.319 min Scan# 202
 Delta R.T. -0.000 min
 Lab File: VX025542.D
 Acq: 06 Dec 2021 12:34



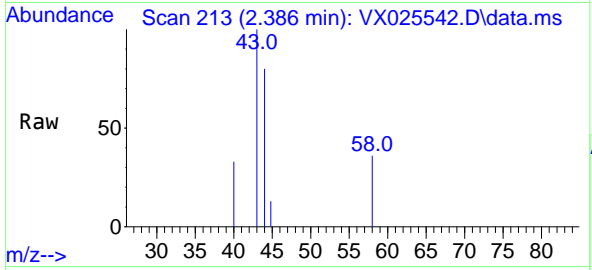
Tgt Ion: 96 Resp: 3100
 Ion Ratio Lower Upper
 96 100
 61 150.9 134.1 201.1
 98 60.4 51.5 77.3



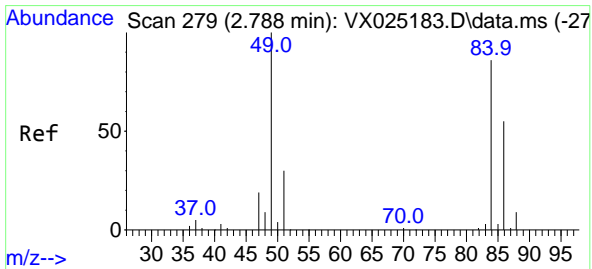
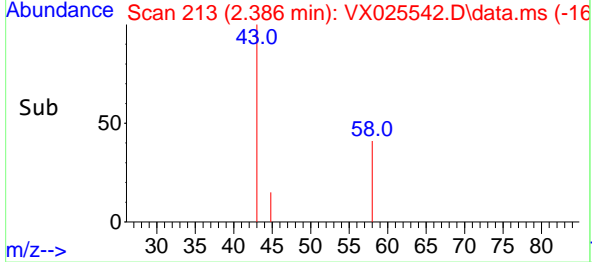
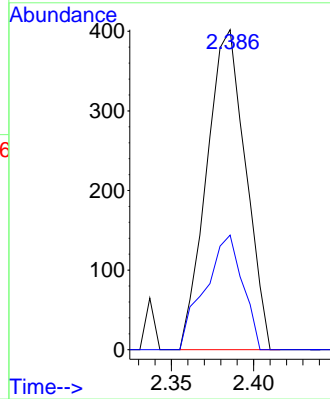


#16
 Acetone
 Concen: 1.071 ug/l
 RT: 2.386 min Scan# 212
 Delta R.T. 0.006 min
 Lab File: VX025542.D
 Acq: 06 Dec 2021 12:34

Instrument :
 MSVOA_X
 ClientSampleId :

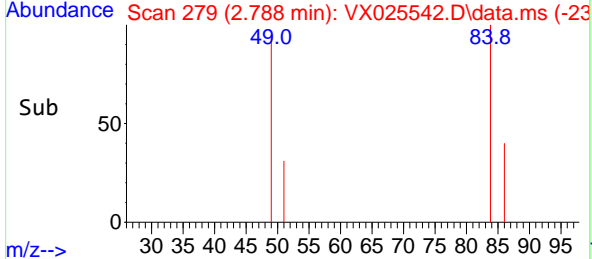
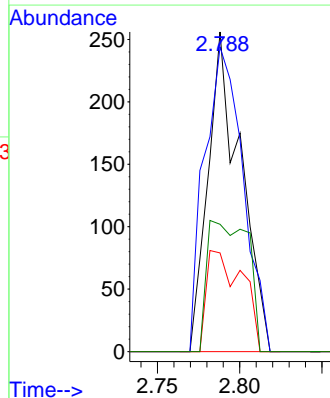
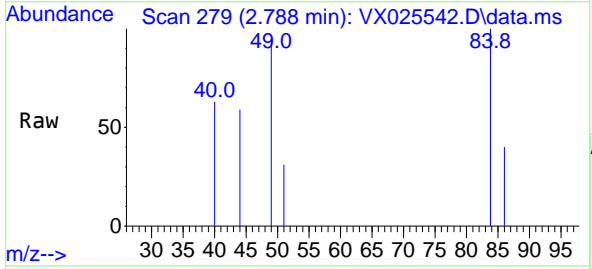


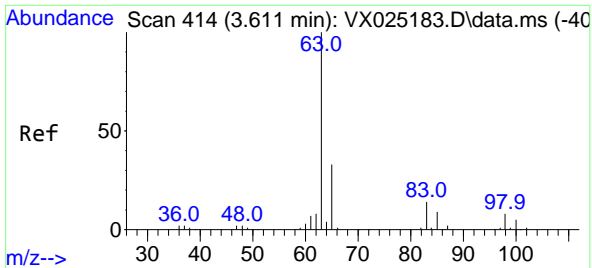
Tgt Ion: 43 Resp: 662
 Ion Ratio Lower Upper
 43 100
 58 35.8 24.0 36.0



#20
 Methylene Chloride
 Concen: 0.303 ug/l
 RT: 2.788 min Scan# 279
 Delta R.T. 0.000 min
 Lab File: VX025542.D
 Acq: 06 Dec 2021 12:34

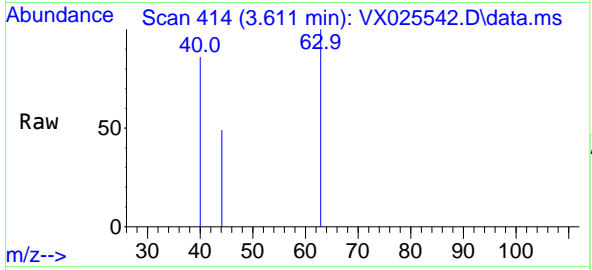
Tgt Ion: 84 Resp: 352
 Ion Ratio Lower Upper
 84 100
 49 95.3 98.2 147.2#
 51 30.9 30.2 45.4
 86 39.8 52.2 78.2#





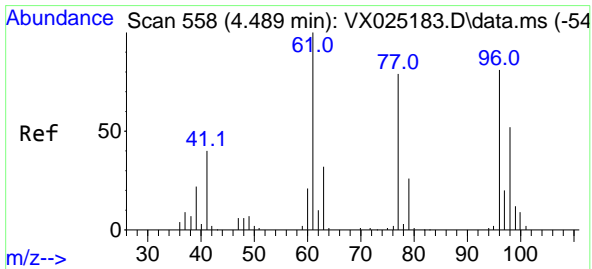
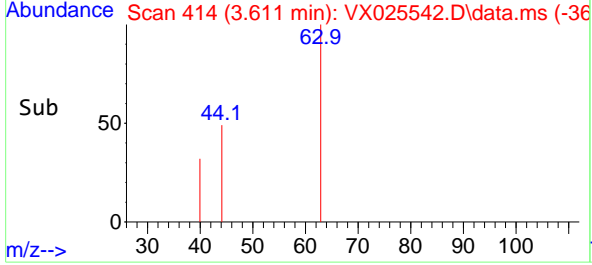
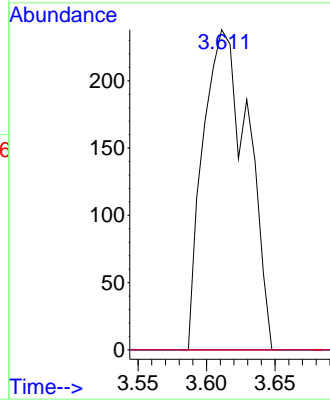
#24
 1,1-Dichloroethane
 Concen: 0.295 ug/l
 RT: 3.611 min Scan# 414
 Delta R.T. 0.000 min
 Lab File: VX025542.D
 Acq: 06 Dec 2021 12:34

Instrument :
 MSVOA_X
 ClientSampleId :

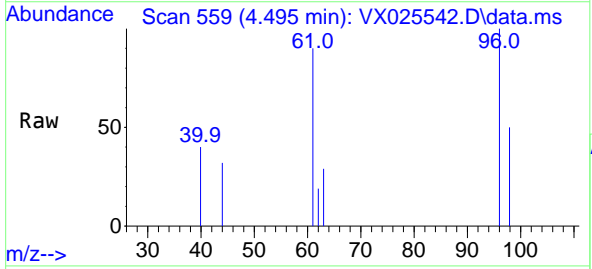


Tgt Ion: 63 Resp: 543

Ion	Ratio	Lower	Upper
63	100		
98	0.0	3.3	9.9#
100	0.0	2.1	6.2#

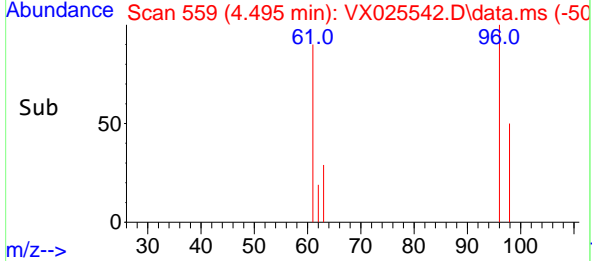
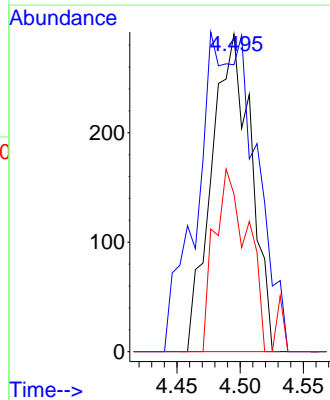


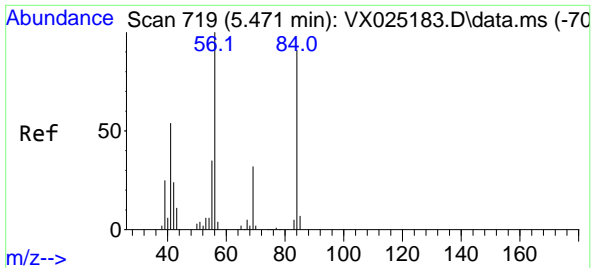
#27
 cis-1,2-Dichloroethene
 Concen: 0.504 ug/l
 RT: 4.495 min Scan# 559
 Delta R.T. 0.006 min
 Lab File: VX025542.D
 Acq: 06 Dec 2021 12:34



Tgt Ion: 96 Resp: 631

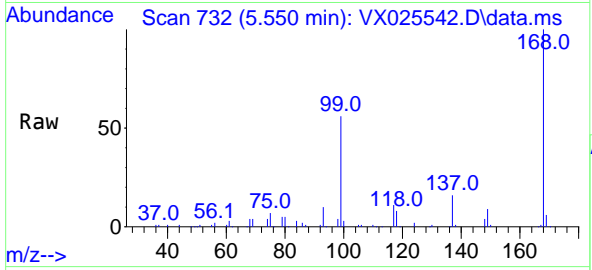
Ion	Ratio	Lower	Upper
96	100		
61	146.8	0.0	302.2
98	48.3	0.0	131.4



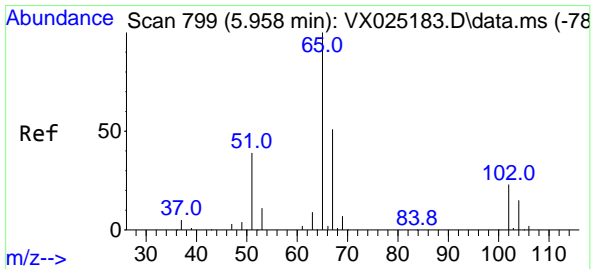
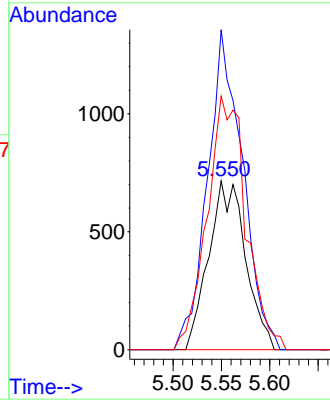
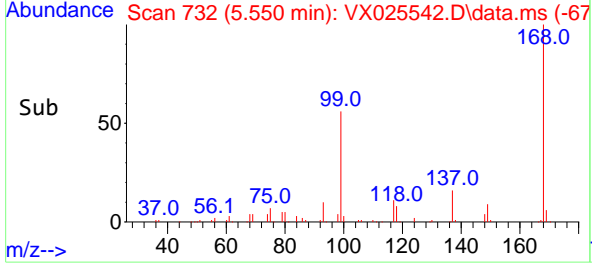


#31
 Cyclohexane
 Concen: 1.103 ug/l
 RT: 5.550 min Scan# 719
 Delta R.T. 0.079 min
 Lab File: VX025542.D
 Acq: 06 Dec 2021 12:34

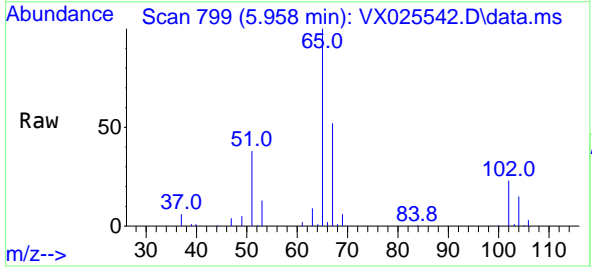
Instrument : MSVOA_X
 ClientSampleId :



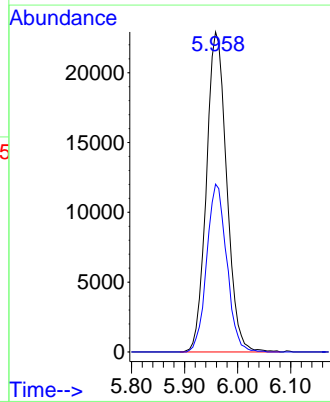
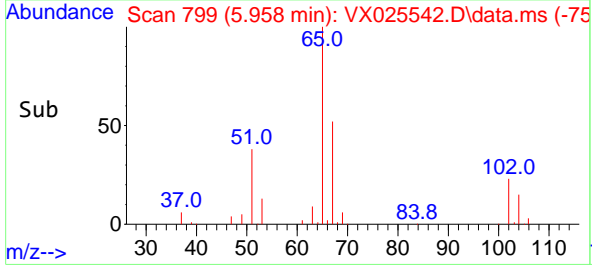
Tgt Ion: 56 Resp: 1896
 Ion Ratio Lower Upper
 56 100
 69 189.5 24.2 36.2#
 84 142.7 71.5 107.3#

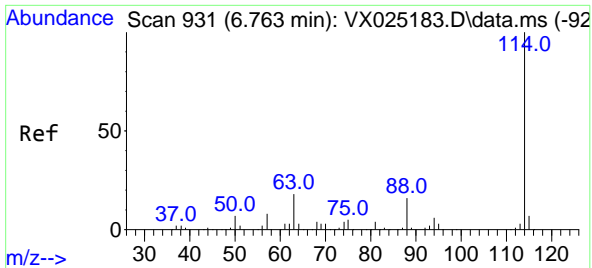


#33
 1,2-Dichloroethane-d4
 Concen: 54.730 ug/l
 RT: 5.958 min Scan# 799
 Delta R.T. 0.000 min
 Lab File: VX025542.D
 Acq: 06 Dec 2021 12:34



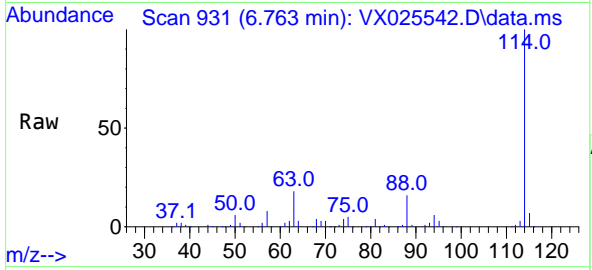
Tgt Ion: 65 Resp: 60891
 Ion Ratio Lower Upper
 65 100
 67 51.7 0.0 101.0





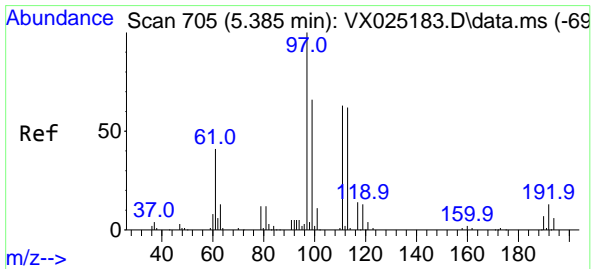
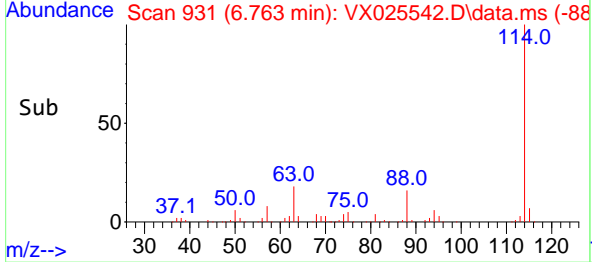
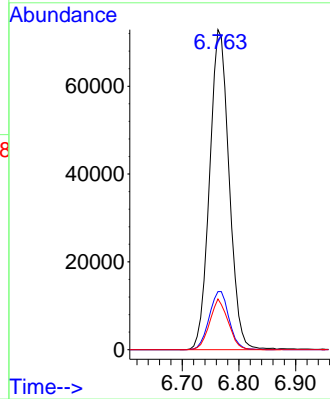
#34
 1,4-Difluorobenzene
 Concen: 50.000 ug/l
 RT: 6.763 min Scan# 91
 Delta R.T. -0.000 min
 Lab File: VX025542.D
 Acq: 06 Dec 2021 12:34

Instrument : MSVOA_X
 ClientSampleId :

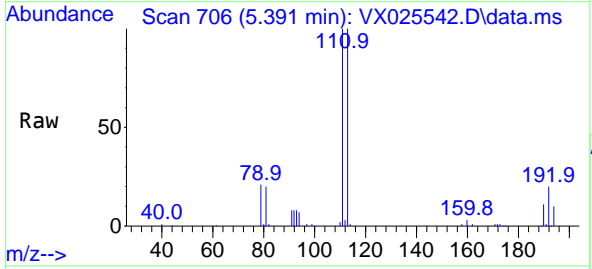


Tgt Ion:114 Resp: 173966

Ion	Ratio	Lower	Upper
114	100		
63	18.2	0.0	41.0
88	15.9	0.0	34.8

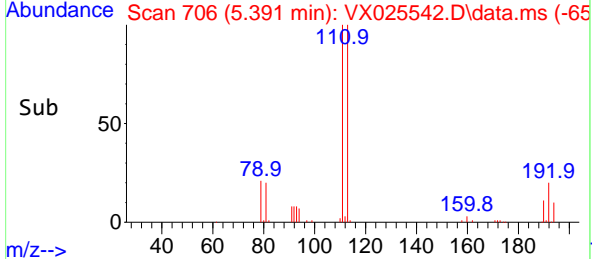
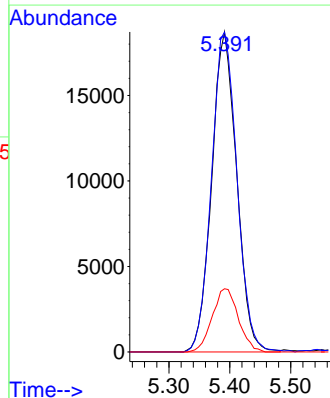


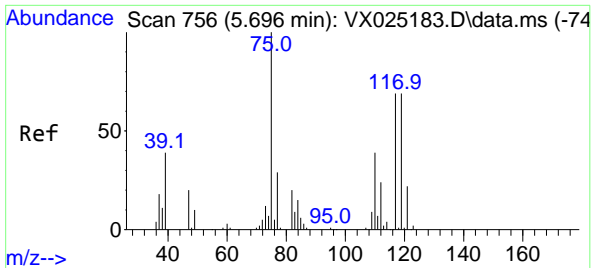
#35
 Dibromofluoromethane
 Concen: 49.949 ug/l
 RT: 5.391 min Scan# 706
 Delta R.T. 0.006 min
 Lab File: VX025542.D
 Acq: 06 Dec 2021 12:34



Tgt Ion:113 Resp: 53315

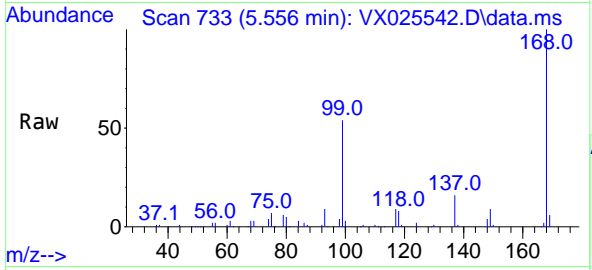
Ion	Ratio	Lower	Upper
113	100		
111	102.1	82.1	123.1
192	20.6	15.6	23.4



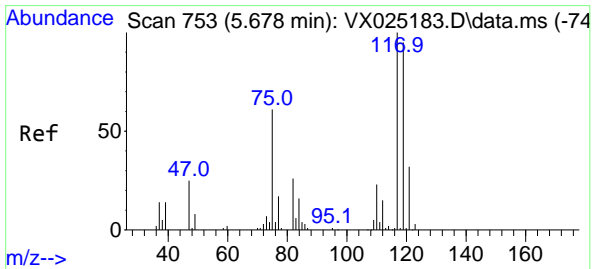
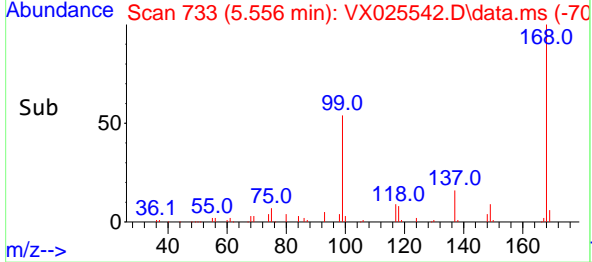
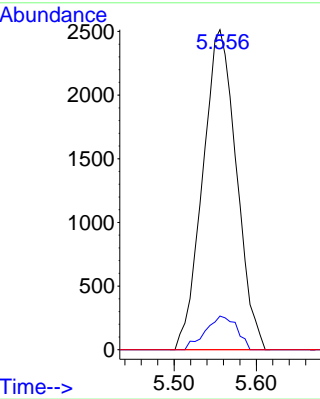


#36
 1,1-Dichloropropene
 Concen: 4.708 ug/l
 RT: 5.556 min Scan# 711
 Delta R.T. -0.140 min
 Lab File: VX025542.D
 Acq: 06 Dec 2021 12:34

Instrument : MSVOA_X
 ClientSampleId :

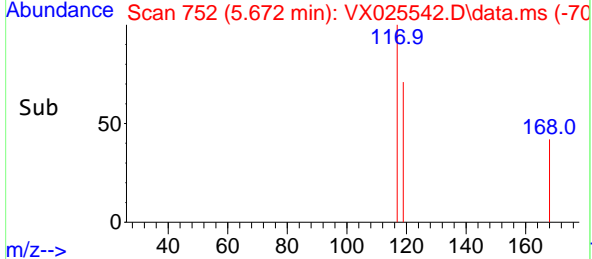
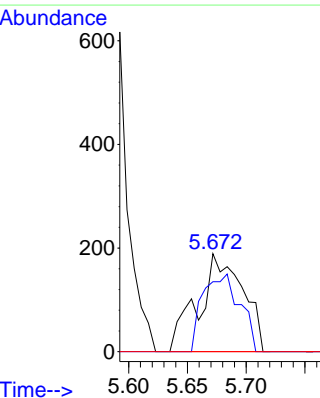
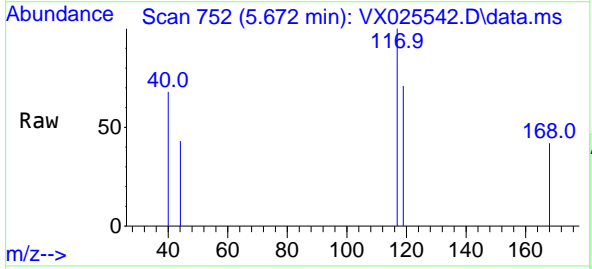


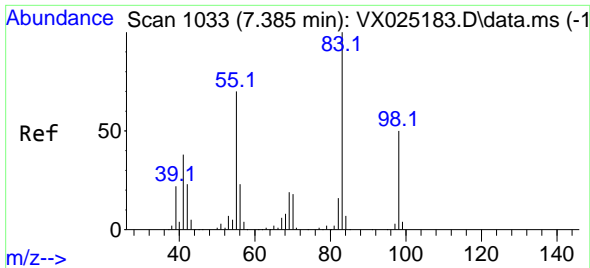
Tgt Ion: 75 Resp: 7146
 Ion Ratio Lower Upper
 75 100
 110 9.8 18.1 54.3#
 77 0.0 24.4 36.6#



#38
 Carbon Tetrachloride
 Concen: 0.297 ug/l
 RT: 5.672 min Scan# 752
 Delta R.T. -0.006 min
 Lab File: VX025542.D
 Acq: 06 Dec 2021 12:34

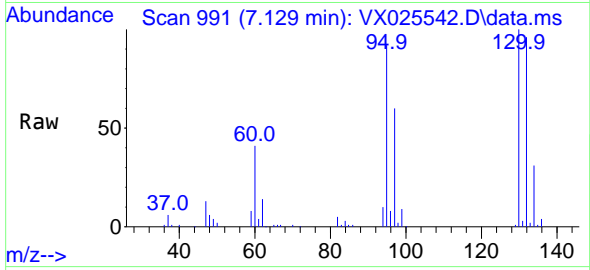
Tgt Ion: 117 Resp: 497
 Ion Ratio Lower Upper
 117 100
 119 71.4 75.6 113.4#
 121 0.0 23.7 35.5#



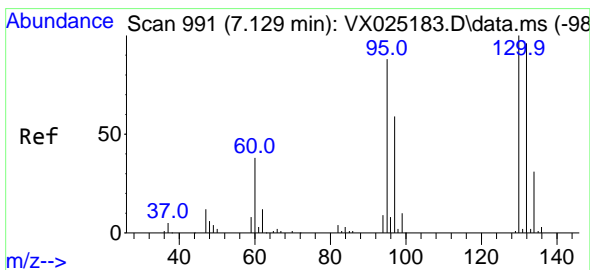
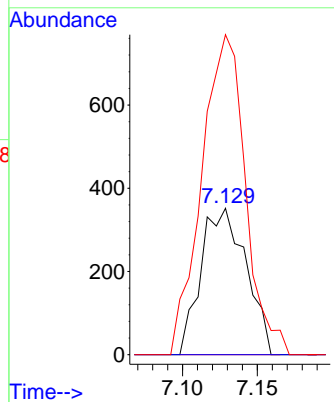
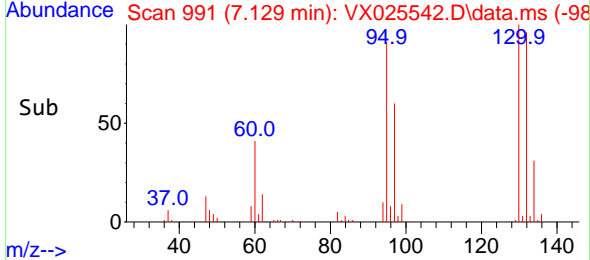


#39
 Methylcyclohexane
 Concen: 0.380 ug/l
 RT: 7.129 min Scan# 991
 Delta R.T. -0.256 min
 Lab File: VX025542.D
 Acq: 06 Dec 2021 12:34

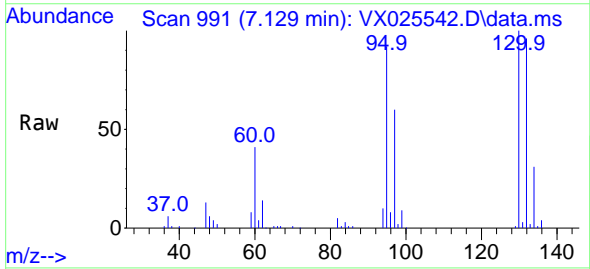
Instrument : MSVOA_X
 ClientSampleId :



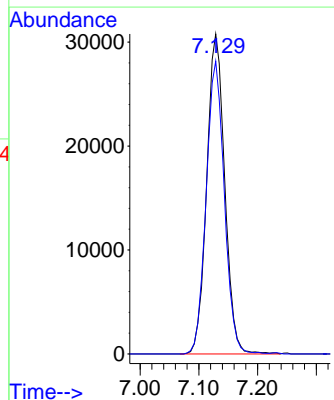
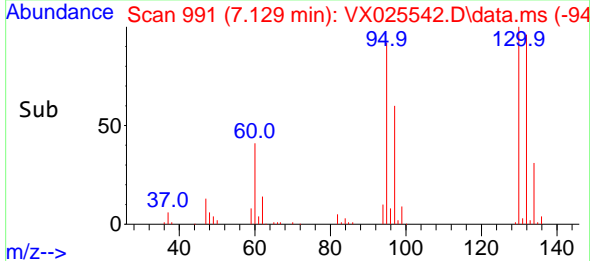
Tgt Ion: 83 Resp: 739
 Ion Ratio Lower Upper
 83 100
 55 0.0 60.8 91.2#
 98 201.7 37.0 55.4#

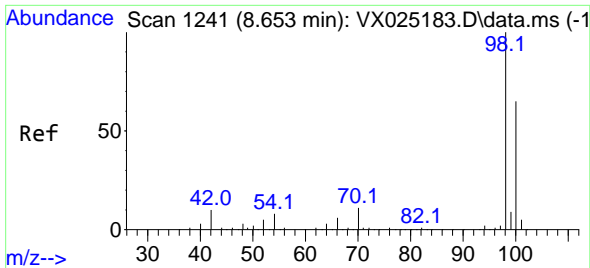


#44
 Trichloroethene
 Concen: 49.089 ug/l
 RT: 7.129 min Scan# 991
 Delta R.T. -0.000 min
 Lab File: VX025542.D
 Acq: 06 Dec 2021 12:34



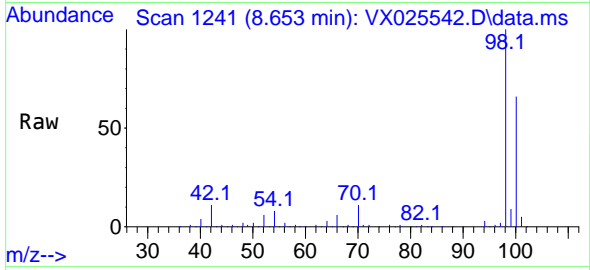
Tgt Ion:130 Resp: 65566
 Ion Ratio Lower Upper
 130 100
 95 91.5 0.0 196.8



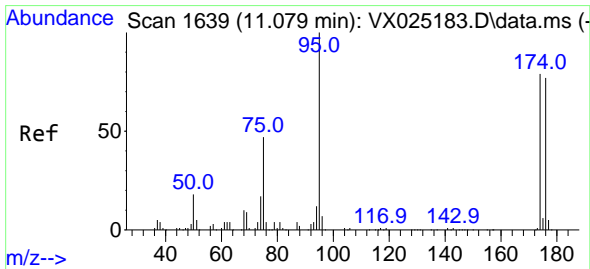
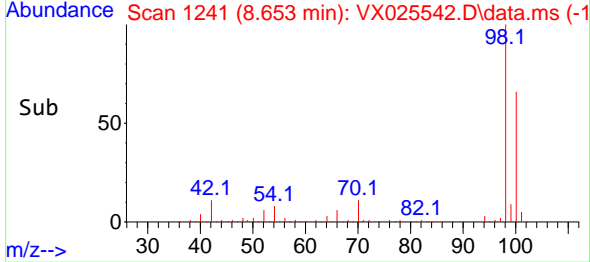
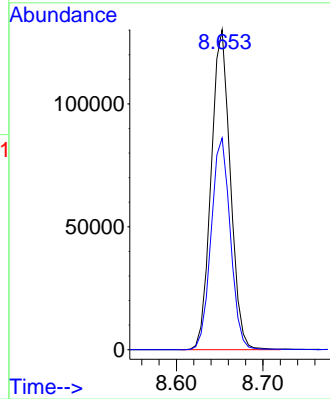


#50
 Toluene-d8
 Concen: 49.861 ug/l
 RT: 8.653 min Scan# 11
 Delta R.T. -0.000 min
 Lab File: VX025542.D
 Acq: 06 Dec 2021 12:34

Instrument :
 MSVOA_X
 ClientSampleId :

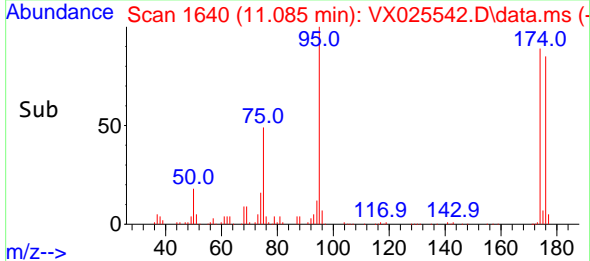
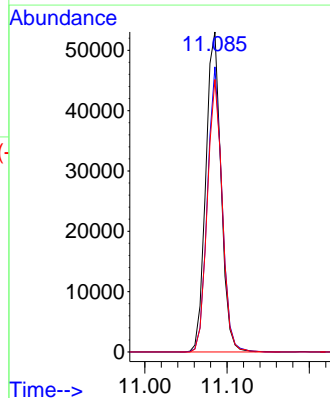
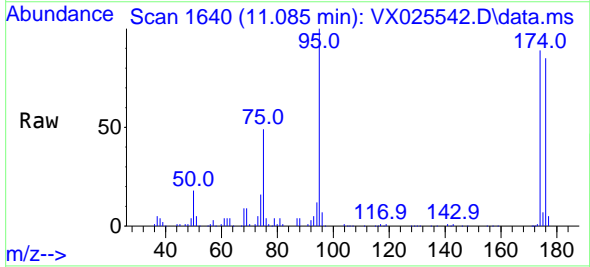


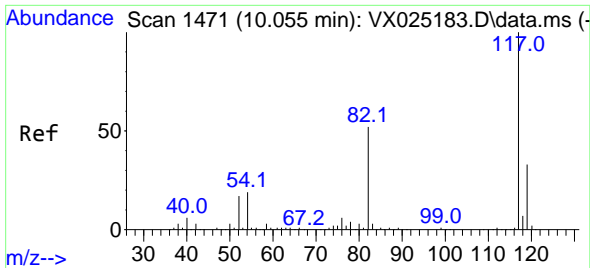
Tgt Ion: 98 Resp: 200106
 Ion Ratio Lower Upper
 98 100
 100 66.4 51.4 77.0



#62
 4-Bromofluorobenzene
 Concen: 45.063 ug/l
 RT: 11.085 min Scan# 1640
 Delta R.T. 0.006 min
 Lab File: VX025542.D
 Acq: 06 Dec 2021 12:34

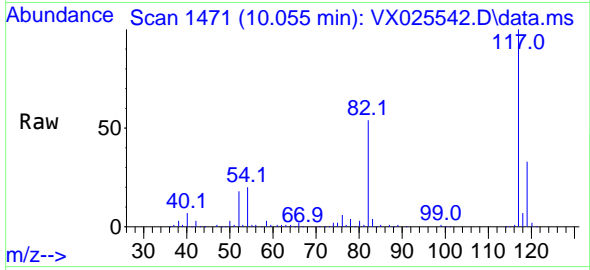
Tgt Ion: 95 Resp: 68418
 Ion Ratio Lower Upper
 95 100
 174 85.2 0.0 158.0
 176 83.0 0.0 153.6



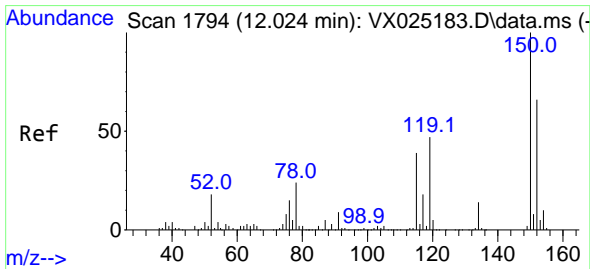
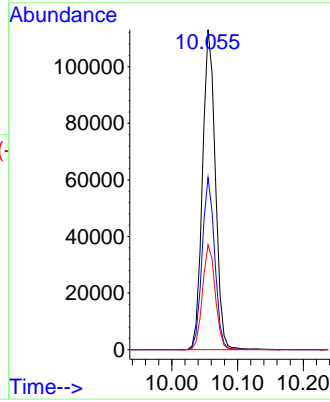
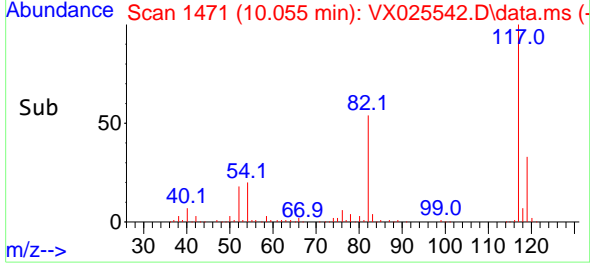


#63
 Chlorobenzene-d5
 Concen: 50.000 ug/l
 RT: 10.055 min Scan# 1471
 Delta R.T. -0.000 min
 Lab File: VX025542.D
 Acq: 06 Dec 2021 12:34

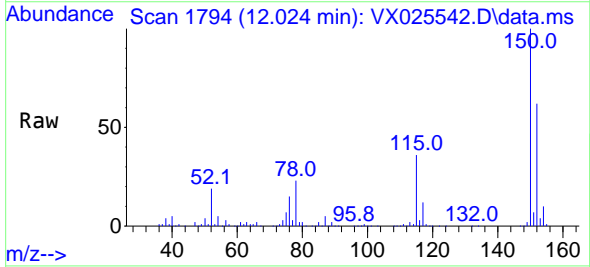
Instrument : MSVOA_X
 ClientSampleId :



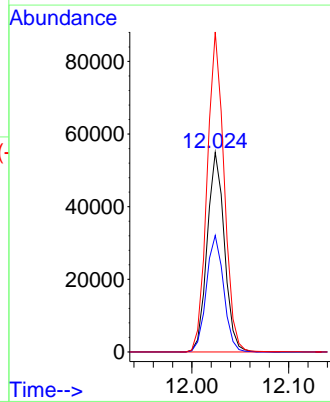
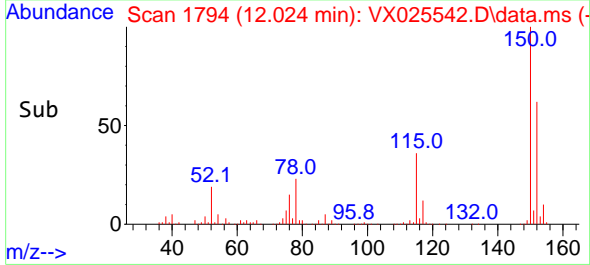
Tgt Ion:117 Resp: 153899
 Ion Ratio Lower Upper
 117 100
 82 53.7 44.6 67.0
 119 32.8 24.8 37.2

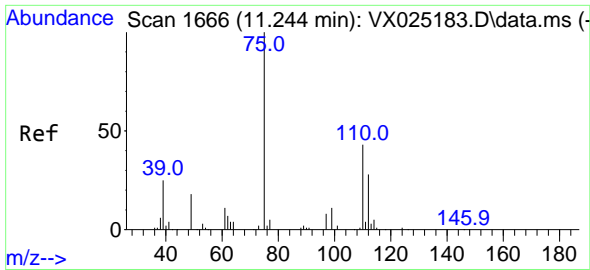


#72
 1,4-Dichlorobenzene-d4
 Concen: 50.000 ug/l
 RT: 12.024 min Scan# 1794
 Delta R.T. 0.000 min
 Lab File: VX025542.D
 Acq: 06 Dec 2021 12:34



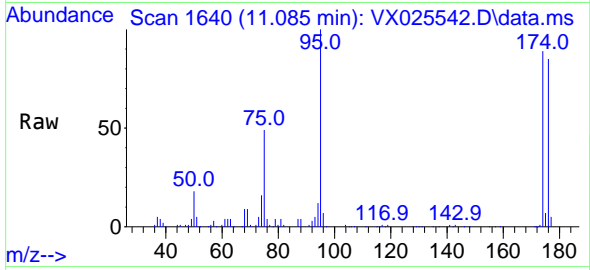
Tgt Ion:152 Resp: 68083
 Ion Ratio Lower Upper
 152 100
 115 58.6 43.3 129.8
 150 158.1 0.0 351.2



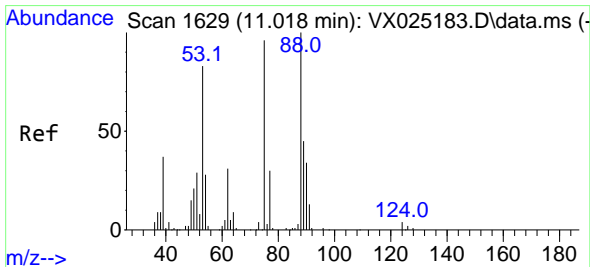
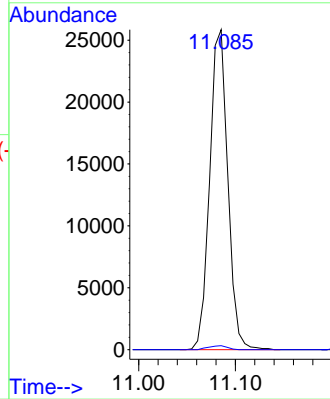
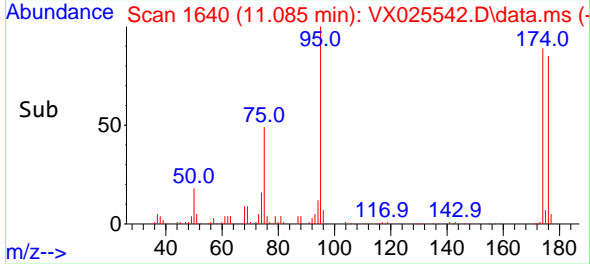


#76
 1,2,3-Trichloropropane
 Concen: 24.099 ug/l
 RT: 11.085 min Scan# 1640
 Delta R.T. -0.159 min
 Lab File: VX025542.D
 Acq: 06 Dec 2021 12:34

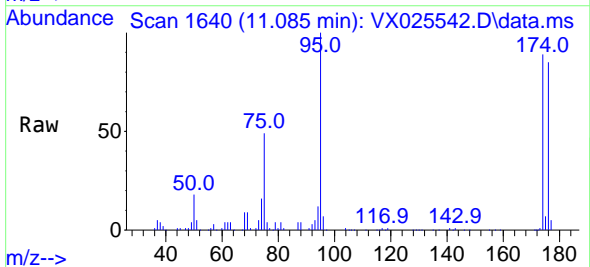
Instrument : MSVOA_X
 ClientSampleId :



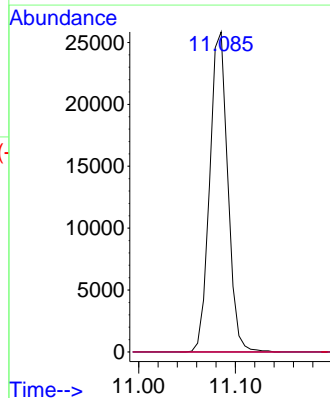
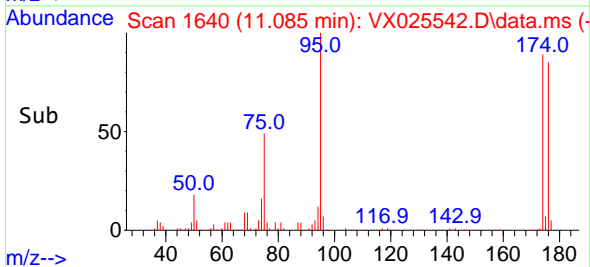
Tgt Ion: 75 Resp: 33599
 Ion Ratio Lower Upper
 75 100
 77 1.3 20.0 59.9#

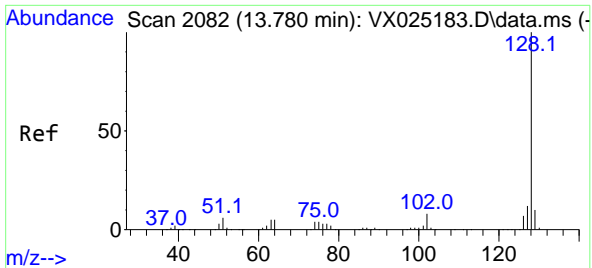


#81
 trans-1,4-Dichloro-2-butene
 Concen: 60.710 ug/l
 RT: 11.085 min Scan# 1640
 Delta R.T. 0.067 min
 Lab File: VX025542.D
 Acq: 06 Dec 2021 12:34



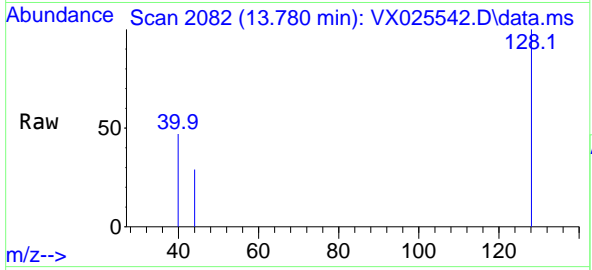
Tgt Ion: 75 Resp: 33599
 Ion Ratio Lower Upper
 75 100
 53 0.0 81.9 122.9#
 89 0.0 38.2 57.2#





#95
 Naphthalene
 Concen: Below Cal
 RT: 13.780 min Scan# 20
 Delta R.T. -0.000 min
 Lab File: VX025542.D
 Acq: 06 Dec 2021 12:34

Instrument :
 MSVOA_X
 ClientSampleId :



Tgt Ion:128 Resp: 431

Ion	Ratio	Lower	Upper
128	100		
127	0.0	10.3	15.5#
129	0.0	8.8	13.2#

