

Data Path : Z:\voasrv\HPCHEM1\MSVOA\_X\Data\VX120721\  
 Data File : VX025574.D  
 Acq On : 07 Dec 2021 13:10  
 Operator : JC/MD  
 Sample : M4881-13ME  
 Misc : 3.83g/5mL/100uL/5.00mL/MSVOA\_X/MEOH  
 ALS Vial : 10 Sample Multiplier: 1

Instrument :  
 MSVOA\_X  
 ClientSampleId :  
 EW9E9ME

Quant Time: Dec 08 05:34:10 2021  
 Quant Method : Z:\voasrv\HPCHEM1\MSVOA\_X\Method\SFAMXLM112221WMA.M  
 Quant Title : VOC Analysis  
 QLast Update : Wed Dec 08 05:26:42 2021  
 Response via : Initial Calibration

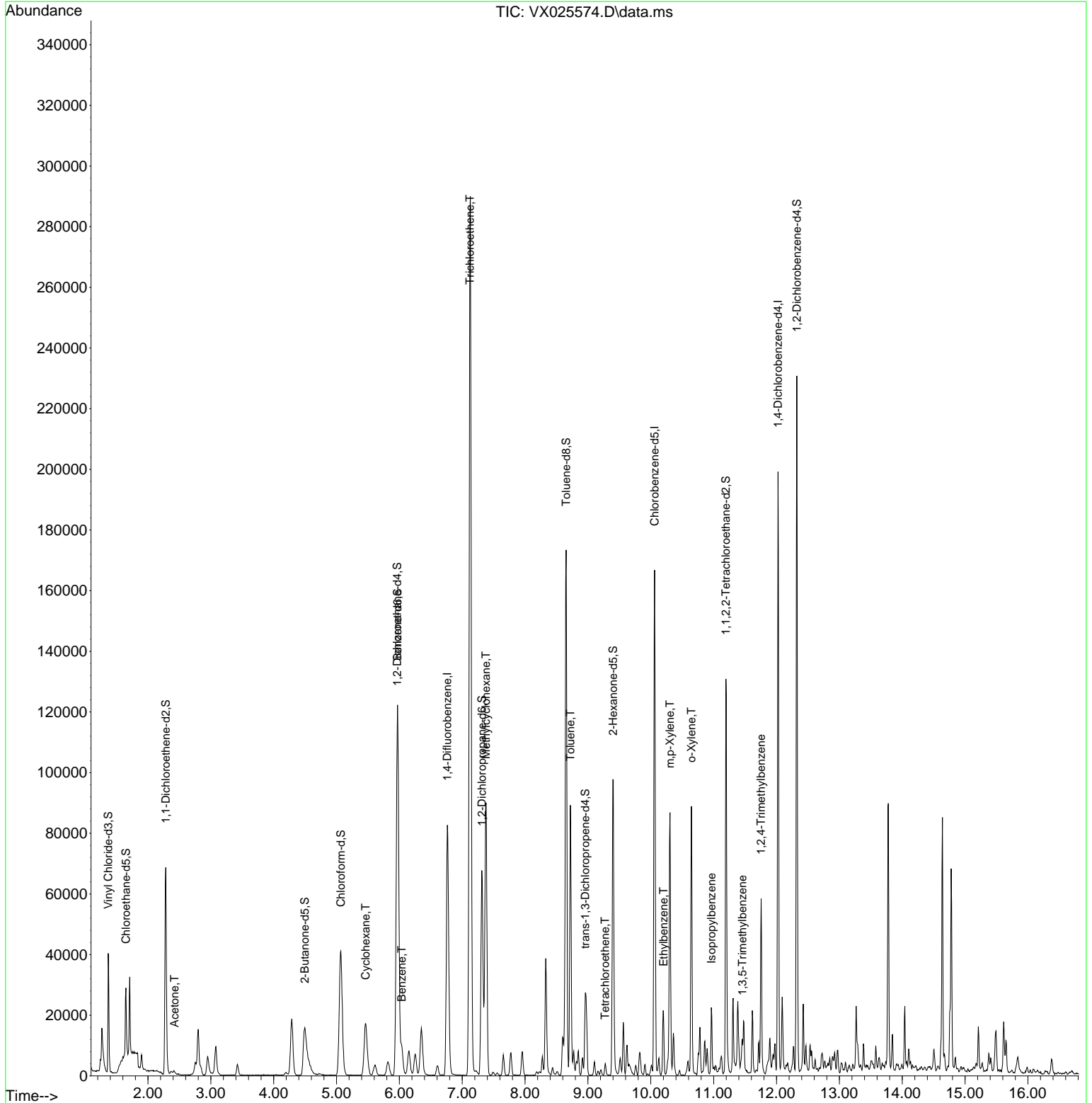
Compound	R.T.	QIon	Response	Conc	Units	Dev(Min)
-----						
Internal Standards						
1) 1,4-Difluorobenzene	6.763	114	96358	50.000	ug/L	0.00
28) Chlorobenzene-d5	10.061	117	85745	50.000	ug/L	0.00
58) 1,4-Dichlorobenzene-d4	12.024	152	41980	50.000	ug/L	0.00
System Monitoring Compounds						
4) Vinyl Chloride-d3	1.367	65	26375	40.108	ug/L	0.00
Spiked Amount	50.000	Range 60 - 135	Recovery =	80.220%		
7) Chloroethane-d5	1.648	69	14121	26.018	ug/L	-0.02
Spiked Amount	50.000	Range 70 - 130	Recovery =	52.040%#		
11) 1,1-Dichloroethene-d2	2.282	63	39633	37.799	ug/L	-0.02
Spiked Amount	50.000	Range 60 - 125	Recovery =	75.600%		
21) 2-Butanone-d5	4.495	46	45790	93.542	ug/L	0.04
Spiked Amount	100.000	Range 40 - 130	Recovery =	93.540%		
24) Chloroform-d	5.068	84	55698	48.463	ug/L	0.01
Spiked Amount	50.000	Range 70 - 125	Recovery =	96.920%		
26) 1,2-Dichloroethane-d4	5.964	65	36329	50.713	ug/L	0.01
Spiked Amount	50.000	Range 70 - 125	Recovery =	101.420%		
32) Benzene-d6	5.970	84	120130	52.862	ug/L	0.00
Spiked Amount	50.000	Range 70 - 125	Recovery =	105.720%		
36) 1,2-Dichloropropane-d6	7.311	67	36479	51.847	ug/L	0.00
Spiked Amount	50.000	Range 70 - 120	Recovery =	103.700%		
41) Toluene-d8	8.652	98	109439	51.021	ug/L	0.00
Spiked Amount	50.000	Range 80 - 120	Recovery =	102.040%		
43) trans-1,3-Dichloroprop...	8.957	79	12704	35.913	ug/L	0.00
Spiked Amount	50.000	Range 60 - 125	Recovery =	71.820%		
47) 2-Hexanone-d5	9.402	63	32685	89.242	ug/L	0.02
Spiked Amount	100.000	Range 45 - 130	Recovery =	89.240%		
56) 1,1,2,2-Tetrachloroeth...	11.195	84	49006	49.283	ug/L	0.00
Spiked Amount	50.000	Range 65 - 120	Recovery =	98.560%		
66) 1,2-Dichlorobenzene-d4	12.323	152	43766	53.155	ug/L	0.00
Spiked Amount	50.000	Range 80 - 120	Recovery =	106.300%		
Target Compounds						
						Qvalue
13) Acetone	2.422	43	1704	4.233	ug/L	84
29) Cyclohexane	5.464	56	12028	13.692	ug/L	97
33) Benzene	6.037	78	10928	4.771	ug/L	100
34) Trichloroethene	7.122	95	111691	185.382	ug/L	96
35) Methylcyclohexane	7.378	83	43225	45.583	ug/L	97
42) Toluene	8.720	91	60941	24.123	ug/L	99
46) Tetrachloroethene	9.274	164	668	1.307	ug/L	91
52) Ethylbenzene	10.201	91	13797	5.082	ug/L	99
53) m,p-Xylene	10.305	106	21326	19.392	ug/L	100
54) o-Xylene	10.646	106	20550	18.667	ug/L	98
60) Isopropylbenzene	10.963	105	11158	4.136	ug/L	99
62) 1,3,5-Trimethylbenzene	11.457	105	4899	2.171	ug/L	93
63) 1,2,4-Trimethylbenzene	11.756	105	23379	10.254	ug/L #	81
-----						

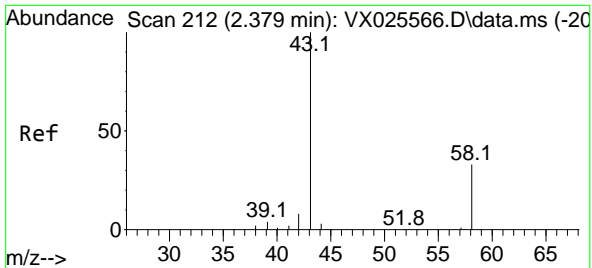
(#) = qualifier out of range (m) = manual integration (+) = signals summed

Data Path : Z:\voasrv\HPCHEM1\MSVOA\_X\Data\VX120721\  
 Data File : VX025574.D  
 Acq On : 07 Dec 2021 13:10  
 Operator : JC/MD  
 Sample : M4881-13ME  
 Misc : 3.83g/5mL/100uL/5.00mL/MSVOA\_X/MEOH  
 ALS Vial : 10 Sample Multiplier: 1

Instrument :  
 MSVOA\_X  
 ClientSampleId :  
 EW9E9ME

Quant Time: Dec 08 05:34:10 2021  
 Quant Method : Z:\voasrv\HPCHEM1\MSVOA\_X\Method\SFAMXML112221WMA.M  
 Quant Title : VOC Analysis  
 QLast Update : Wed Dec 08 05:26:42 2021  
 Response via : Initial Calibration



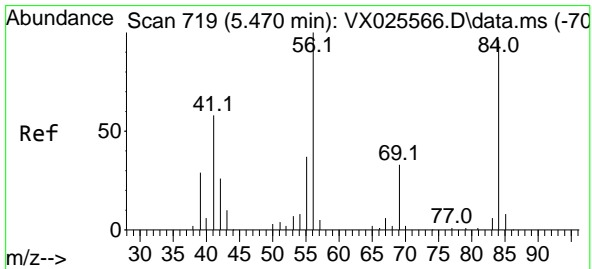
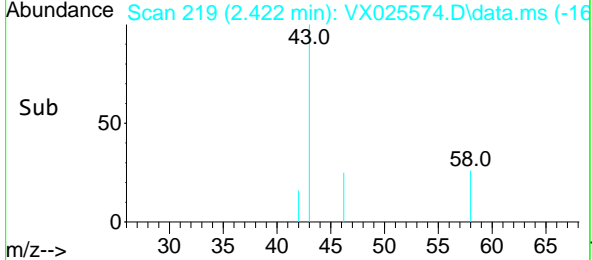
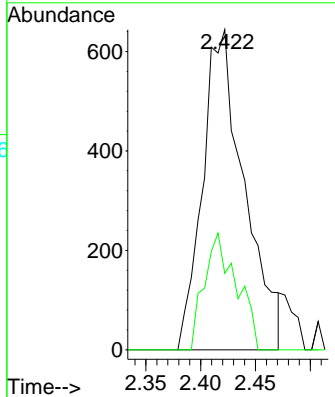
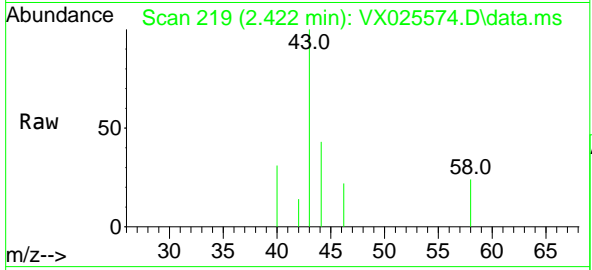


#13  
 Acetone  
 Concen: 4.233 ug/L  
 RT: 2.422 min Scan# 211  
 Delta R.T. 0.042 min  
 Lab File: VX025574.D  
 Acq: 07 Dec 2021 13:10

Instrument : MSVOA\_X  
 Client SampleId : EW9E9ME

Tgt Ion: 43 Resp: 1704

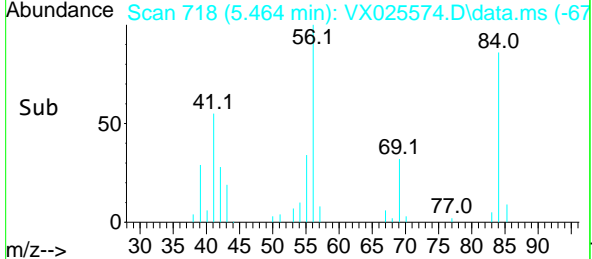
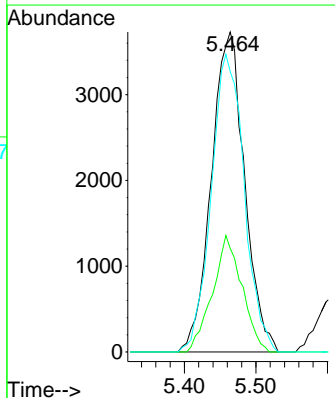
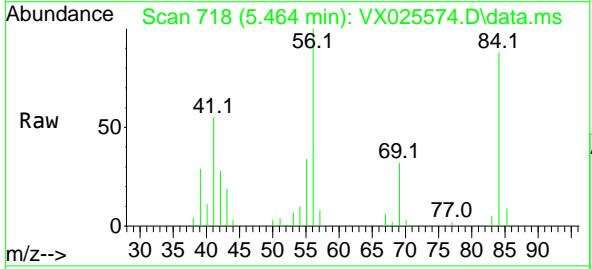
Ion	Ratio	Lower	Upper
43	100		
58	23.7	0.0	65.6

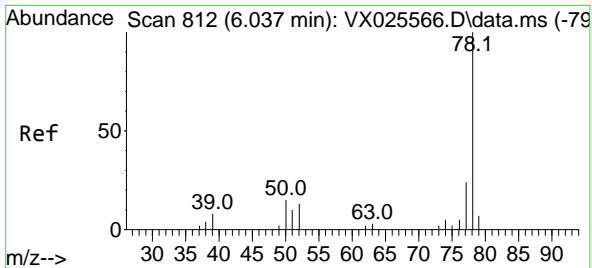


#29  
 Cyclohexane  
 Concen: 13.692 ug/L  
 RT: 5.464 min Scan# 718  
 Delta R.T. -0.006 min  
 Lab File: VX025574.D  
 Acq: 07 Dec 2021 13:10

Tgt Ion: 56 Resp: 12028

Ion	Ratio	Lower	Upper
56	100		
69	32.3	25.4	38.2
84	92.4	76.6	114.8

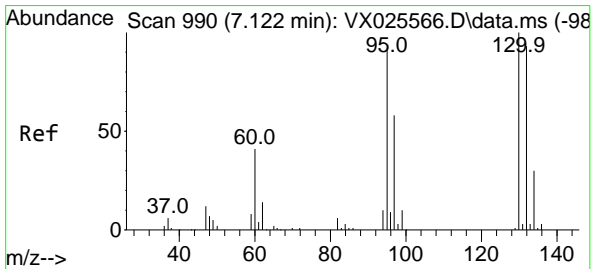
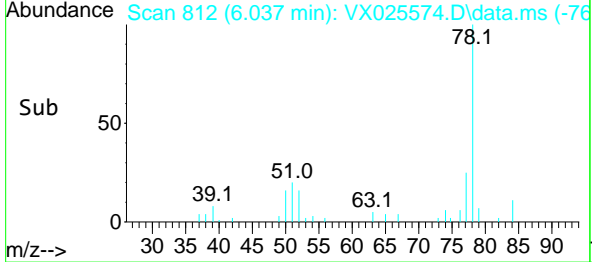
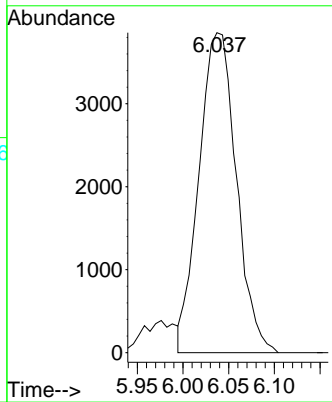
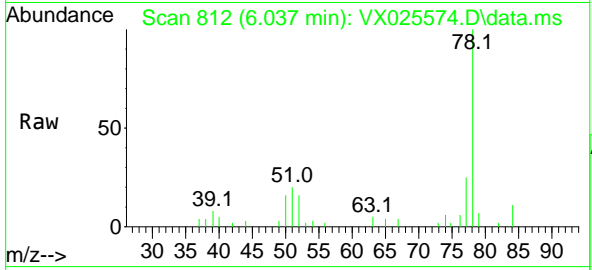




#33  
 Benzene  
 Concen: 4.771 ug/L  
 RT: 6.037 min Scan# 81  
 Delta R.T. -0.000 min  
 Lab File: VX025574.D  
 Acq: 07 Dec 2021 13:10

Instrument : MSVOA\_X  
 ClientSampleId : EW9E9ME

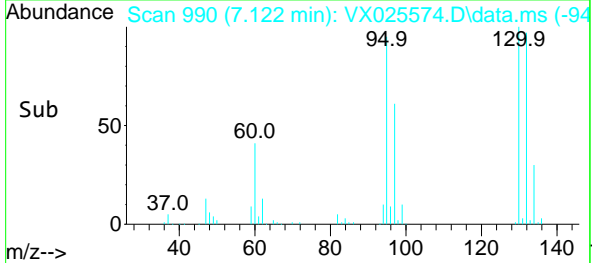
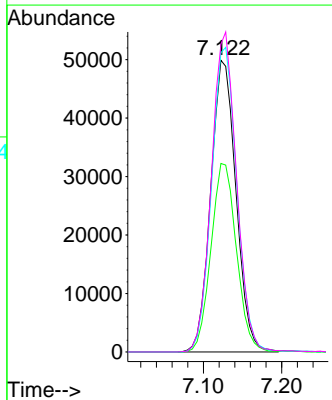
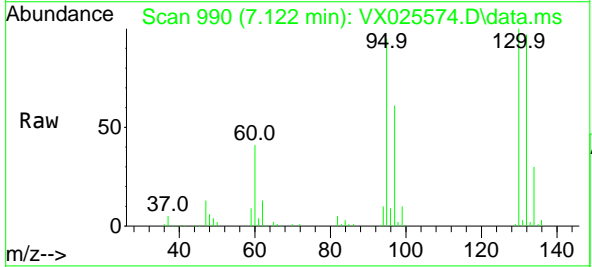
Tgt Ion: 78 Resp: 10928

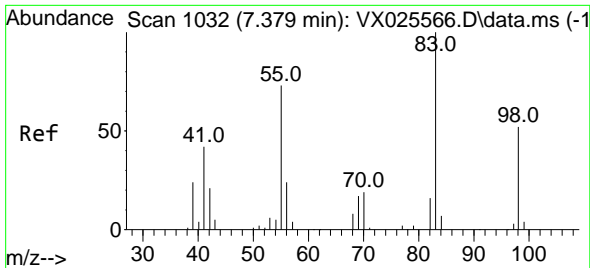


#34  
 Trichloroethene  
 Concen: 185.382 ug/L  
 RT: 7.122 min Scan# 990  
 Delta R.T. -0.000 min  
 Lab File: VX025574.D  
 Acq: 07 Dec 2021 13:10

Tgt Ion: 95 Resp: 111691

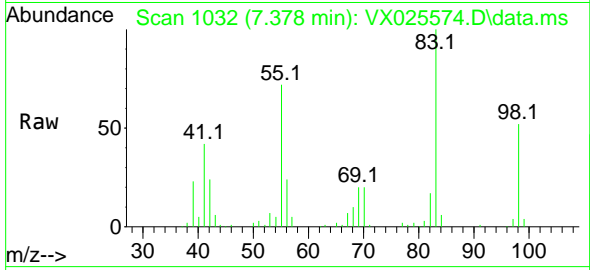
Ion	Ratio	Lower	Upper
95	100		
97	64.6	46.0	85.4
132	102.5	75.0	139.2
130	105.4	77.9	144.7



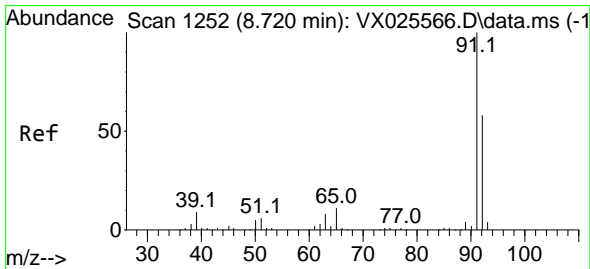
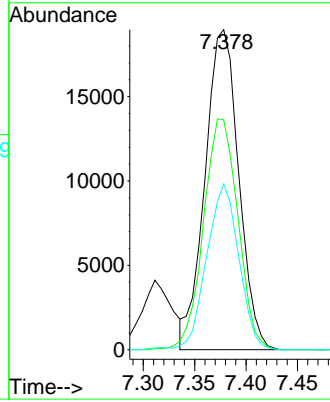
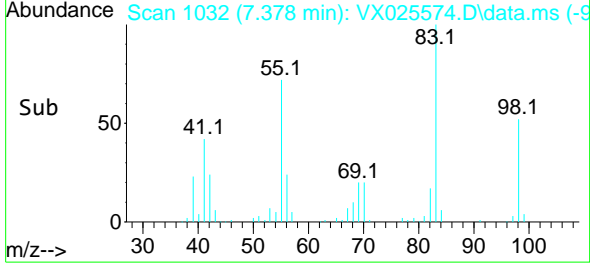


#35  
 Methylcyclohexane  
 Concen: 45.583 ug/L  
 RT: 7.378 min Scan# 1032  
 Delta R.T. -0.000 min  
 Lab File: VX025574.D  
 Acq: 07 Dec 2021 13:10

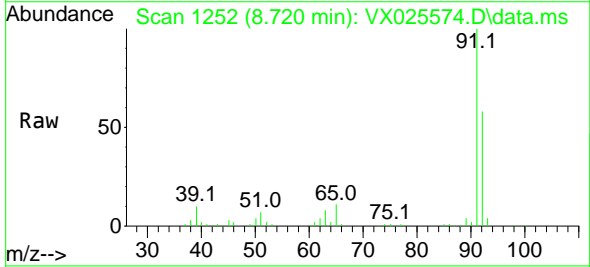
Instrument : MSVOA\_X  
 ClientSampleId : EW9E9ME



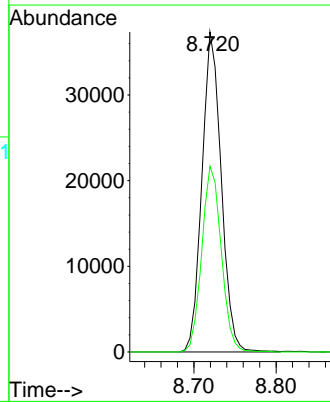
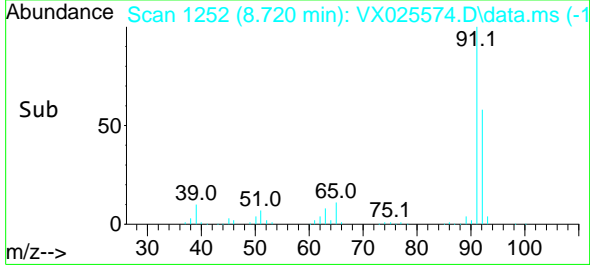
Tgt Ion: 83 Resp: 43225  
 Ion Ratio Lower Upper  
 83 100  
 55 73.8 57.3 85.9  
 98 49.2 41.1 61.7

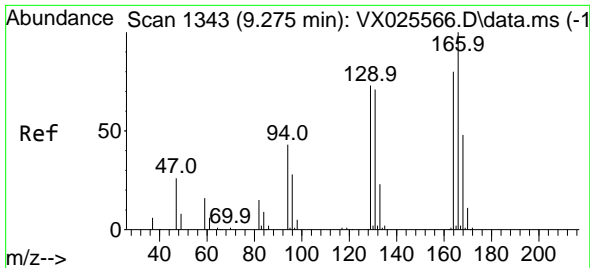


#42  
 Toluene  
 Concen: 24.123 ug/L  
 RT: 8.720 min Scan# 1252  
 Delta R.T. -0.000 min  
 Lab File: VX025574.D  
 Acq: 07 Dec 2021 13:10



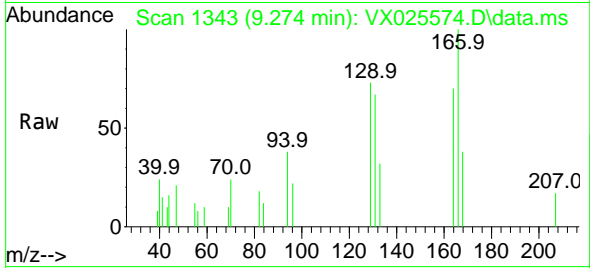
Tgt Ion: 91 Resp: 60941  
 Ion Ratio Lower Upper  
 91 100  
 92 58.1 41.2 76.6





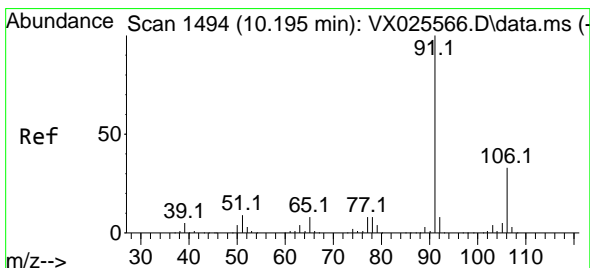
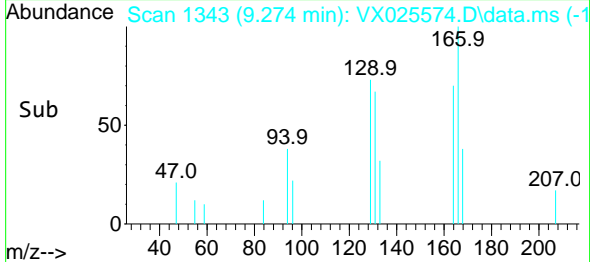
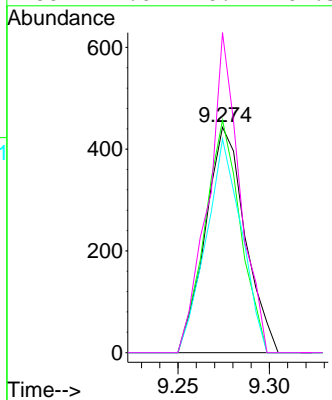
#46  
 Tetrachloroethene  
 Concen: 1.307 ug/L  
 RT: 9.274 min Scan# 11  
 Delta R.T. -0.000 min  
 Lab File: VX025574.D  
 Acq: 07 Dec 2021 13:10

Instrument : MSVOA\_X  
 ClientSampleId : EW9E9ME



Tgt Ion:164 Resp: 668

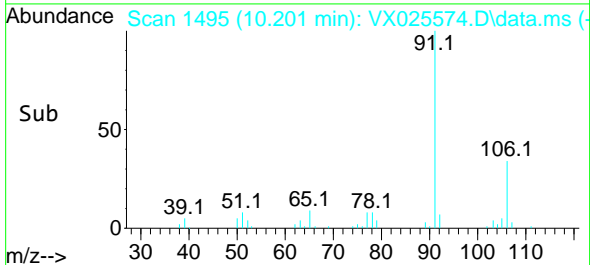
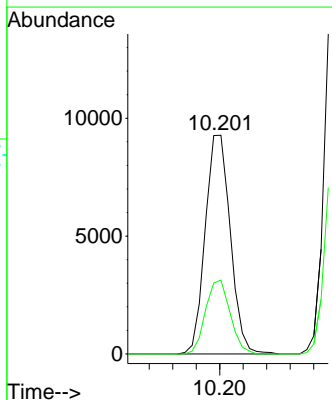
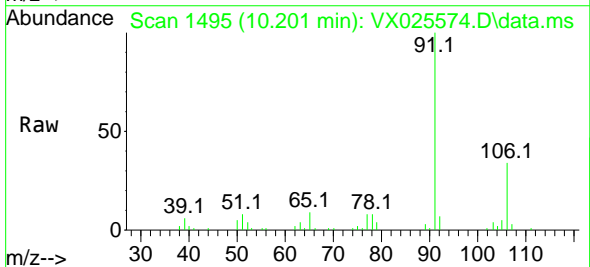
Ion	Ratio	Lower	Upper
164	100		
129	103.2	64.7	120.1
131	94.8	63.2	117.4
166	142.0	90.1	167.3

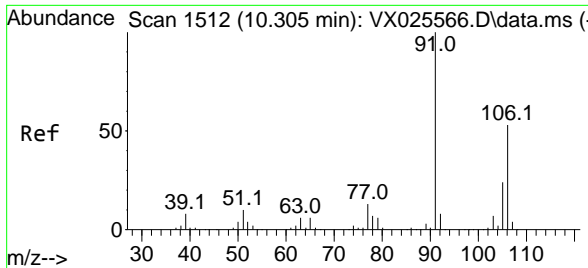


#52  
 Ethylbenzene  
 Concen: 5.082 ug/L  
 RT: 10.201 min Scan# 1495  
 Delta R.T. 0.006 min  
 Lab File: VX025574.D  
 Acq: 07 Dec 2021 13:10

Tgt Ion: 91 Resp: 13797

Ion	Ratio	Lower	Upper
91	100		
106	33.8	23.1	42.9

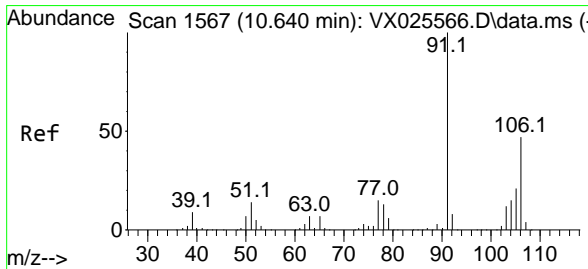
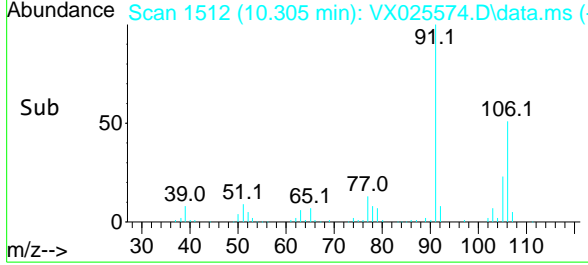
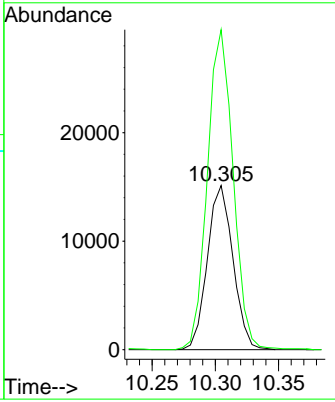
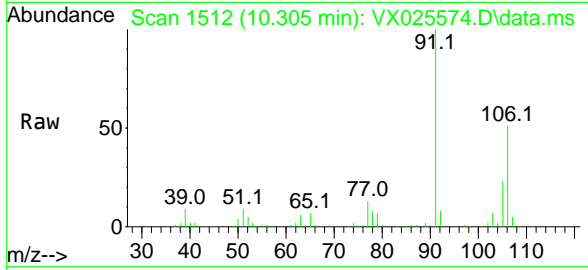




#53  
 m,p-Xylene  
 Concen: 19.392 ug/L  
 RT: 10.305 min Scan# 11  
 Delta R.T. -0.000 min  
 Lab File: VX025574.D  
 Acq: 07 Dec 2021 13:10

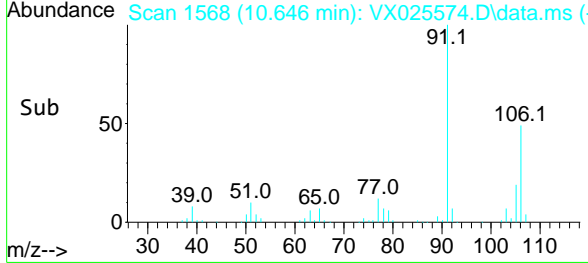
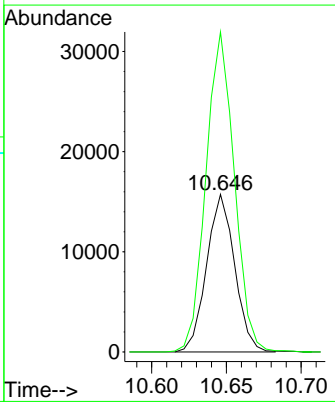
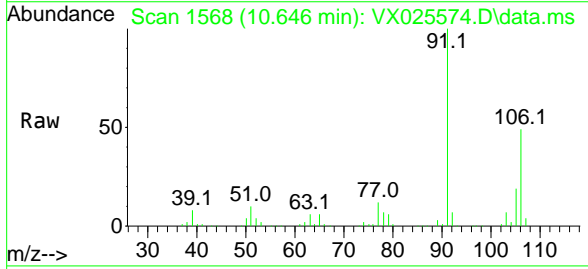
Instrument : MSVOA\_X  
 ClientSampleId : EW9E9ME

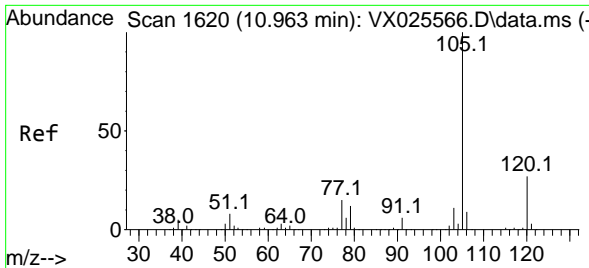
Tgt Ion:106 Resp: 21326  
 Ion Ratio Lower Upper  
 106 100  
 91 194.9 136.8 254.2



#54  
 o-Xylene  
 Concen: 18.667 ug/L  
 RT: 10.646 min Scan# 1568  
 Delta R.T. 0.006 min  
 Lab File: VX025574.D  
 Acq: 07 Dec 2021 13:10

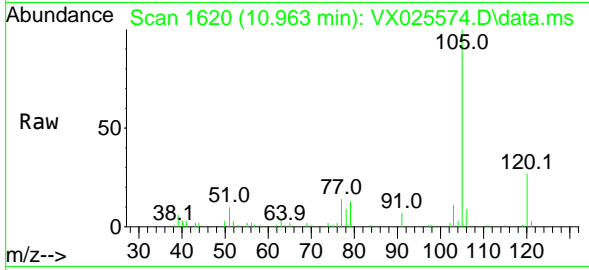
Tgt Ion:106 Resp: 20550  
 Ion Ratio Lower Upper  
 106 100  
 91 203.1 140.5 260.9



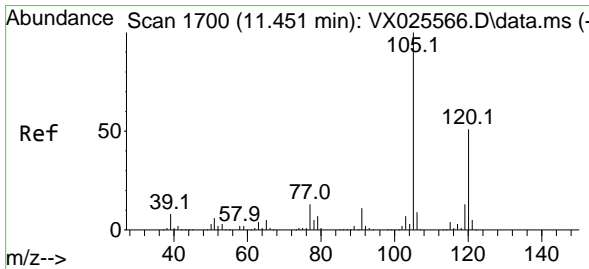
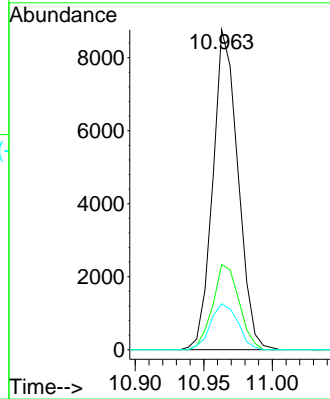
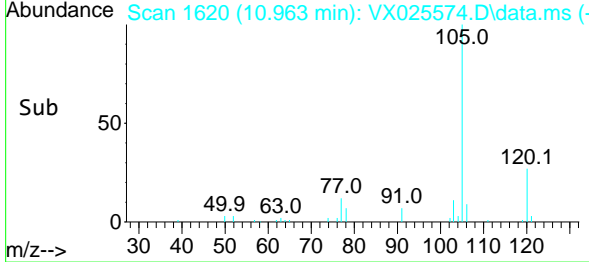


#60  
 Isopropylbenzene  
 Concen: 4.136 ug/L  
 RT: 10.963 min Scan# 1101  
 Delta R.T. -0.000 min  
 Lab File: VX025574.D  
 Acq: 07 Dec 2021 13:10

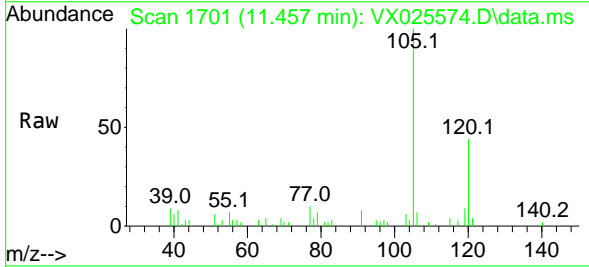
Instrument : MSVOA\_X  
 ClientSampleId : EW9E9ME



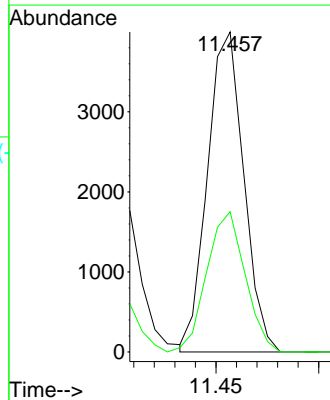
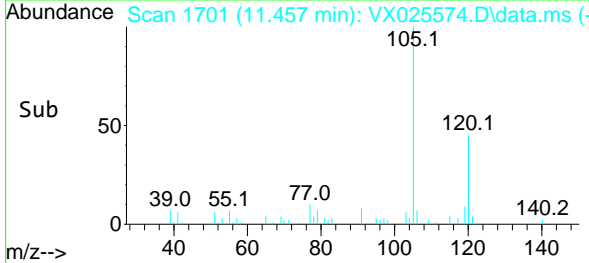
Tgt Ion:105 Resp: 11158  
 Ion Ratio Lower Upper  
 105 100  
 120 28.0 22.3 33.5  
 77 15.6 11.5 17.3



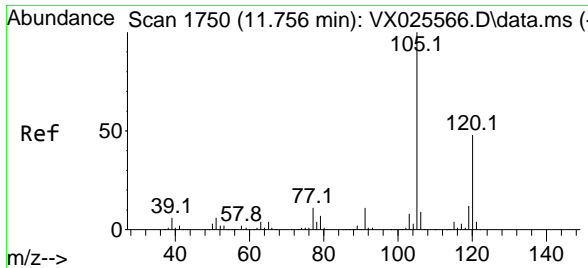
#62  
 1,3,5-Trimethylbenzene  
 Concen: 2.171 ug/L  
 RT: 11.457 min Scan# 1701  
 Delta R.T. 0.006 min  
 Lab File: VX025574.D  
 Acq: 07 Dec 2021 13:10



Tgt Ion:105 Resp: 4899  
 Ion Ratio Lower Upper  
 105 100  
 120 46.5 41.0 61.4

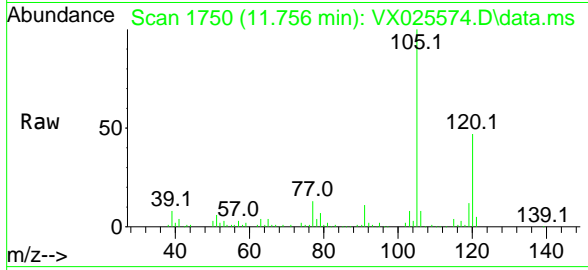






#63  
 1,2,4-Trimethylbenzene  
 Concen: 10.254 ug/L  
 RT: 11.756 min Scan# 11  
 Delta R.T. -0.000 min  
 Lab File: VX025574.D  
 Acq: 07 Dec 2021 13:10

Instrument : MSVOA\_X  
 ClientSampleId : EW9E9ME



Tgt Ion:105 Resp: 23379  
 Ion Ratio Lower Upper  
 105 100  
 120 45.7 0.1 0.1#

