

Data Path : Z:\voasrv\HPCHEM1\MSVOA\_X\Data\VX120820\  
 Data File : VX019762.D  
 Acq On : 08 Dec 2020 16:06  
 Operator : JC/MD  
 Sample : VX1208WBL01  
 Misc : 5.0mL/MSVOA\_X/WATER  
 ALS Vial : 9 Sample Multiplier: 1

Instrument :  
 MSVOA\_X  
 ClientSampleId :  
 VX1208WBL01

Quant Time: Dec 09 06:18:01 2020  
 Quant Method : Z:\VOASRV\HPCHEM1\MSVOA\_X\METHOD\624X120820W.M  
 Quant Title : METHOD 624 VOLATILE ORGANIC ANALYSIS  
 QLast Update : Wed Dec 09 06:09:21 2020  
 Response via : Initial Calibration

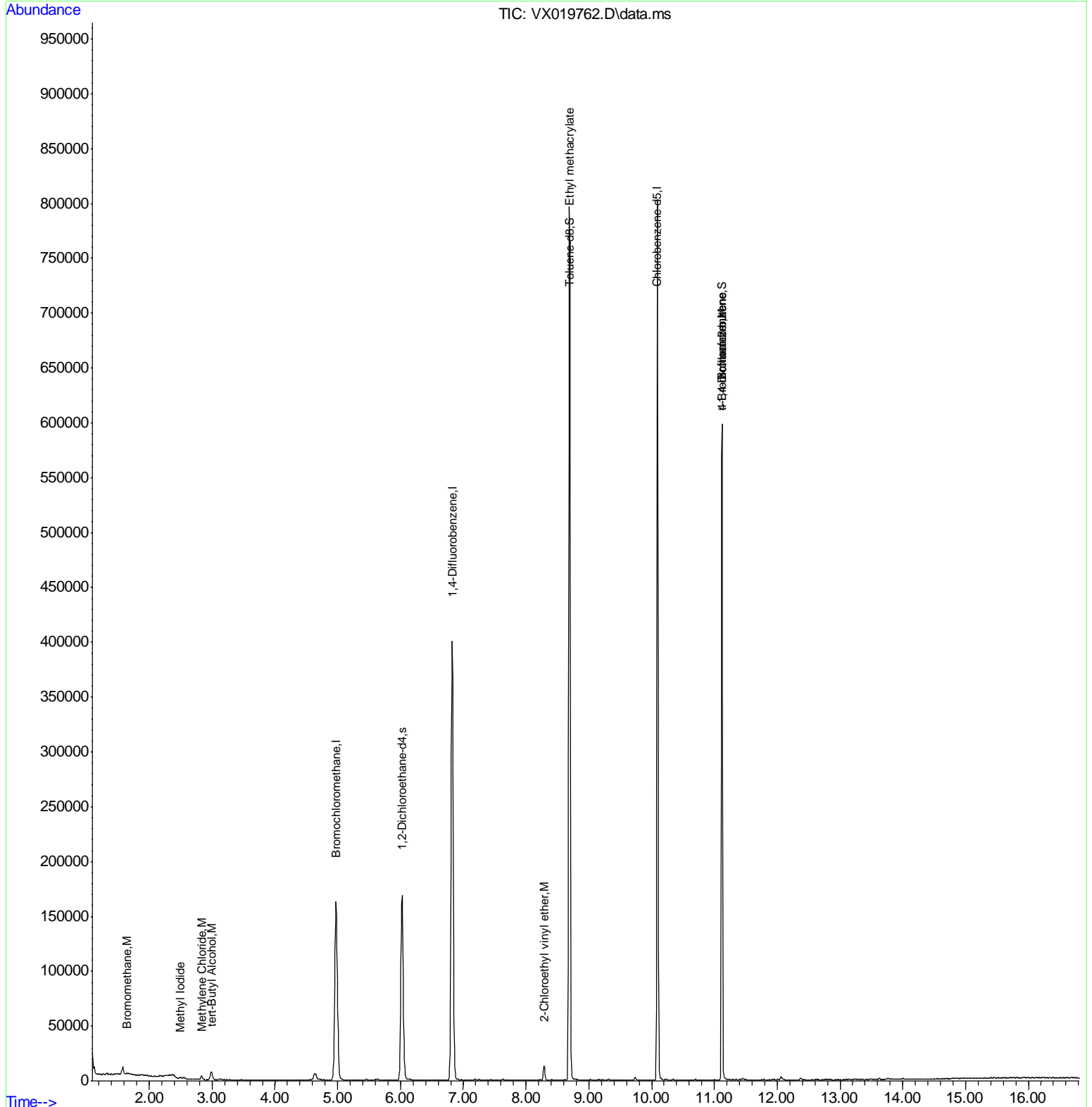
Compound	R.T.	QIon	Response	Conc	Units	Dev(Min)
-----						
Internal Standards						
1) Bromochloromethane	4.977	128	74061	30.00	ug/l	0.00
28) 1,4-Difluorobenzene	6.824	114	404984	30.00	ug/l	0.00
57) Chlorobenzene-d5	10.092	117	363688	30.00	ug/l	0.00
System Monitoring Compounds						
27) 1,2-Dichloroethane-d4	6.025	65	160247	31.22	ug/l	0.00
Spiked Amount	30.000	Range 91 - 110	Recovery	=	104.07%	
60) 4-Bromofluorobenzene	11.116	95	168157	27.53	ug/l	0.00
Spiked Amount	30.000	Range 63 - 112	Recovery	=	91.77%	
63) Toluene-d8	8.690	98	483128	30.33	ug/l	0.00
Spiked Amount	30.000	Range 91 - 112	Recovery	=	101.10%	
Target Compounds						
						Qvalue
5) Bromomethane	1.642	94	833	0.44	ug/l	92
11) Methyl Iodide	2.496	142	1345	0.26	ug/l	88
18) Methylene Chloride	2.831	84	1410	0.29	ug/l	94
23) tert-Butyl Alcohol	2.989	59	4349	3.65	ug/l #	99
51) Ethyl methacrylate	8.696	69	1655	0.22	ug/l #	65
55) 2-Chloroethyl vinyl ether	8.287	63	5409	1.38	ug/l	97
56) Bromoform	11.122	173	1033	0.27	ug/l #	1
77) t-1,4-Dichloro-2-butene	11.116	75	80972	31.52	ug/l #	11

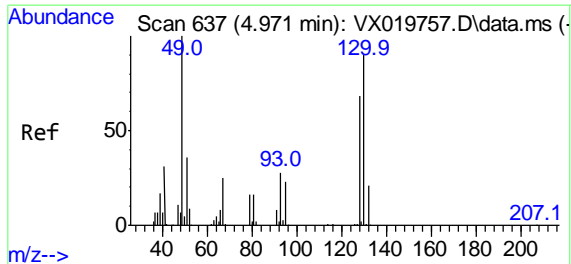
(#) = qualifier out of range (m) = manual integration (+) = signals summed

Data Path : Z:\voasrv\HPCHEM1\MSVOA\_X\Data\VX120820\  
 Data File : VX019762.D  
 Acq On : 08 Dec 2020 16:06  
 Operator : JC/MD  
 Sample : VX1208WBL01  
 Misc : 5.0mL/MSVOA\_X/WATER  
 ALS Vial : 9 Sample Multiplier: 1

Instrument :  
 MSVOA\_X  
 ClientSampleId :  
 VX1208WBL01

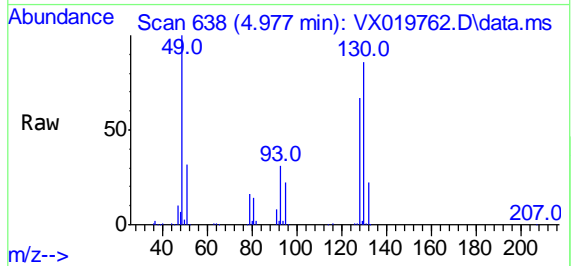
Quant Time: Dec 09 06:18:01 2020  
 Quant Method : Z:\VOASRV\HPCHEM1\MSVOA\_X\METHOD\624X120820W.M  
 Quant Title : METHOD 624 VOLATILE ORGANIC ANALYSIS  
 QLast Update : Wed Dec 09 06:09:21 2020  
 Response via : Initial Calibration





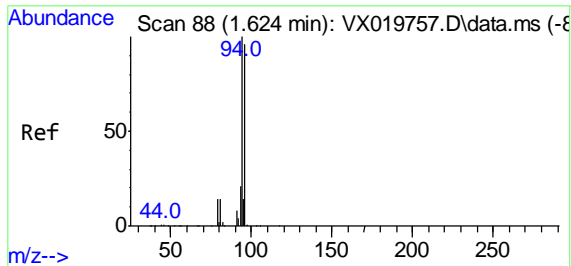
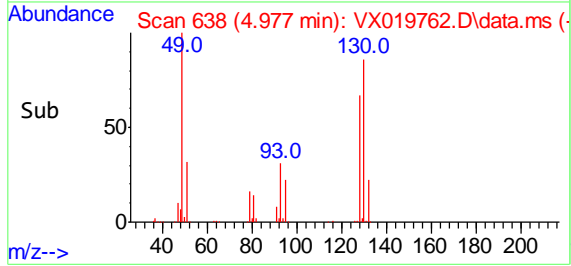
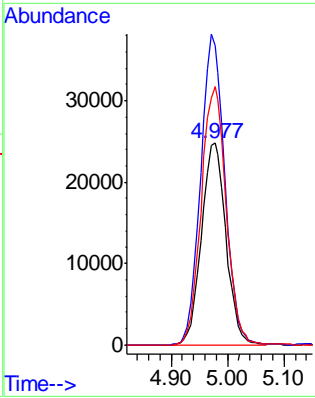
#1  
 Bromochloromethane  
 Concen: 30.00 ug/l  
 RT: 4.977 min Scan# 638  
 Delta R.T. 0.006 min  
 Lab File: VX019762.D  
 Acq: 08 Dec 2020 16:06

**Instrument :**  
 MSVOA\_X  
**ClientSampled :**  
 VX1208WBL01



Tgt Ion: 128 Resp: 74061

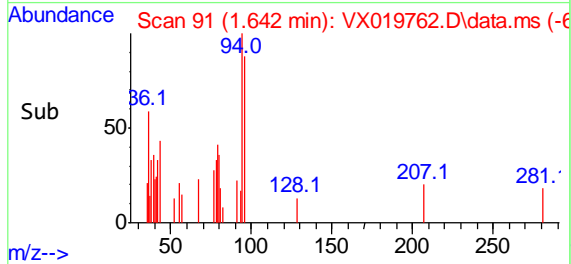
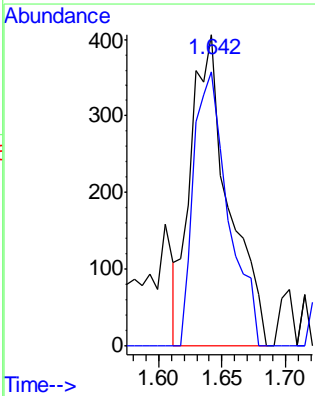
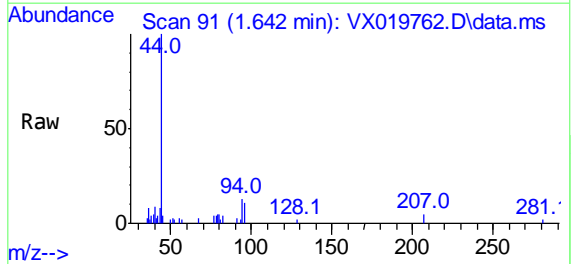
Ion	Ratio	Lower	Upper
128	100		
49	151.0	0.0	367.5
130	129.6	0.0	318.8

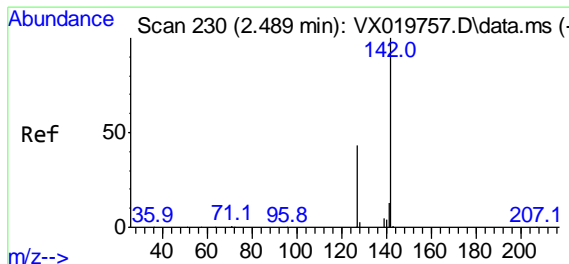


#5  
 Bromomethane  
 Concen: 0.44 ug/l  
 RT: 1.642 min Scan# 91  
 Delta R.T. 0.018 min  
 Lab File: VX019762.D  
 Acq: 08 Dec 2020 16:06

Tgt Ion: 94 Resp: 833

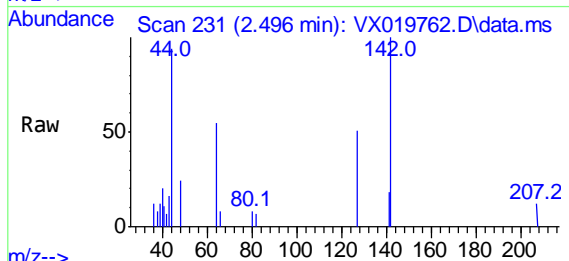
Ion	Ratio	Lower	Upper
94	100		
96	87.9	76.6	114.8





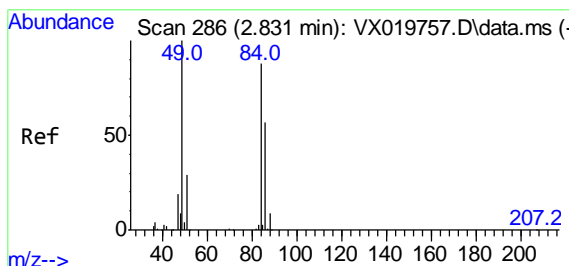
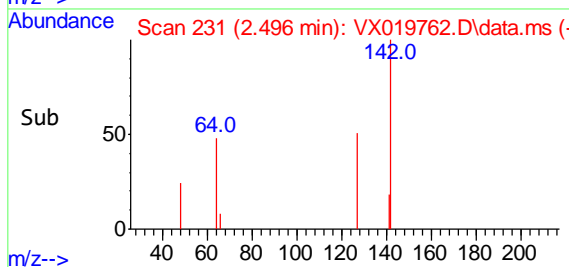
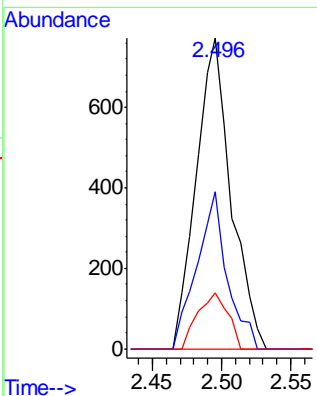
#11  
Methyl Iodide  
Concen: 0.26 ug/l  
RT: 2.496 min Scan# 231  
Delta R.T. 0.006 min  
Lab File: VX019762.D  
Acq: 08 Dec 2020 16:06

Instrument :  
MSVOA\_X  
Client Sampled :  
VX1208WBL01



Tgt Ion: 142 Resp: 1345

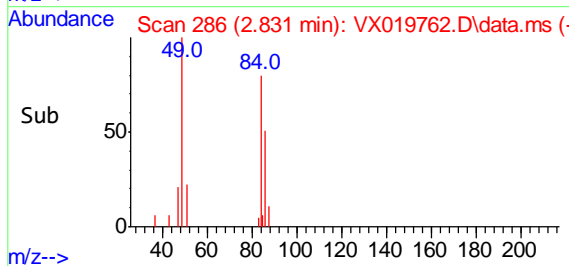
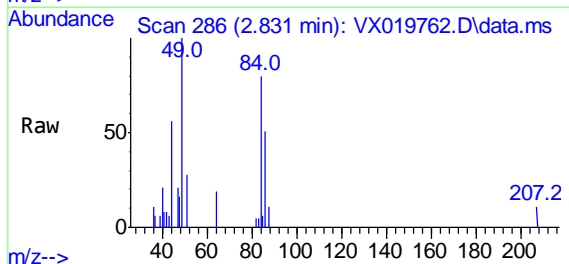
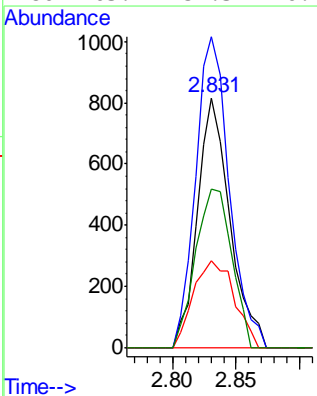
Ion	Ratio	Lower	Upper
142	100		
127	50.5	21.4	64.2
141	17.9	6.5	19.4

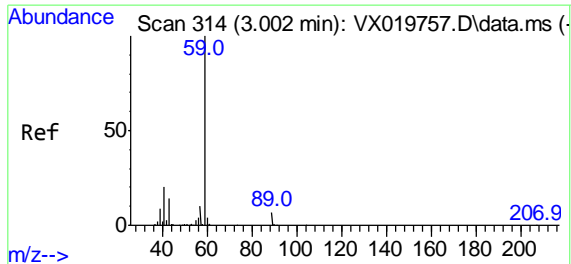


#18  
Methylene Chloride  
Concen: 0.29 ug/l  
RT: 2.831 min Scan# 286  
Delta R.T. -0.000 min  
Lab File: VX019762.D  
Acq: 08 Dec 2020 16:06

Tgt Ion: 84 Resp: 1410

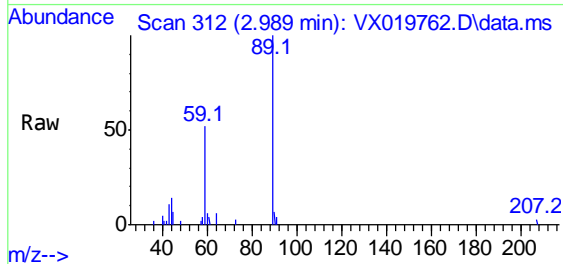
Ion	Ratio	Lower	Upper
84	100		
49	124.5	90.6	136.0
51	34.6	26.3	39.5
86	63.7	51.3	76.9



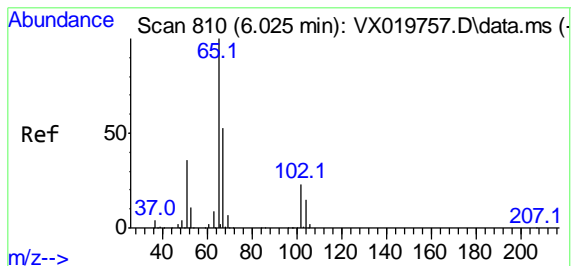
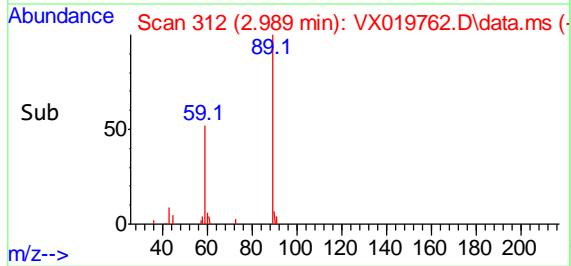
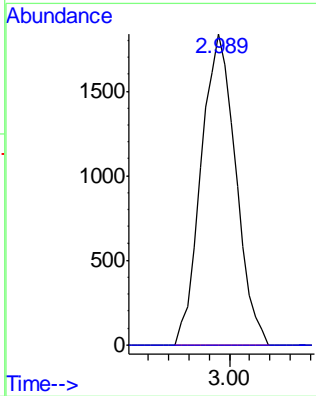


#23  
 tert-Butyl Alcohol  
 Concen: 3.65 ug/l  
 RT: 2.989 min Scan# 312  
 Delta R.T. -0.012 min  
 Lab File: VX019762.D  
 Acq: 08 Dec 2020 16:06

Instrument :  
 MSVOA\_X  
 ClientSampled :  
 VX1208WBL01

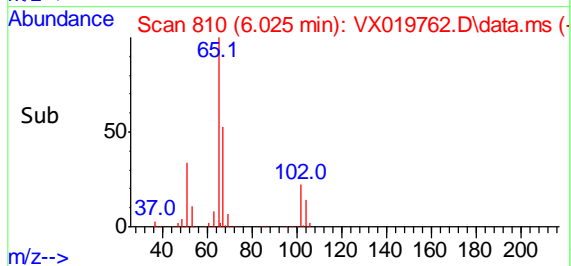
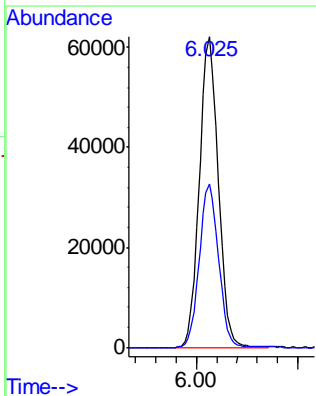
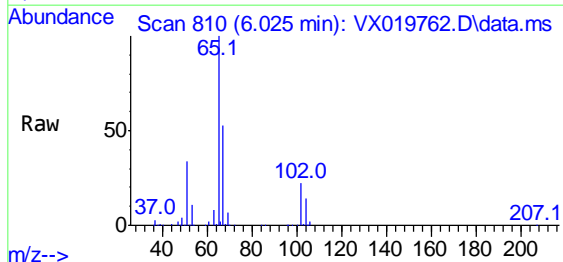


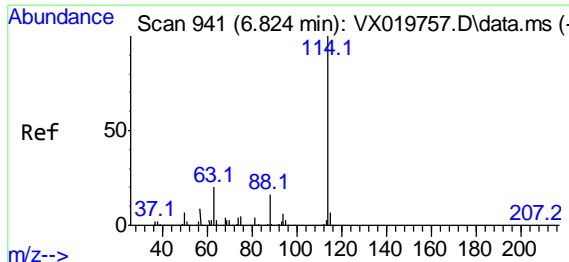
Tgt Ion: 59 Resp: 4349  
 Ion Ratio Lower Upper  
 59 100  
 52 1.9 0.1 0.1#



#27  
 1,2-Dichloroethane-d4  
 Concen: 31.22 ug/l  
 RT: 6.025 min Scan# 810  
 Delta R.T. -0.000 min  
 Lab File: VX019762.D  
 Acq: 08 Dec 2020 16:06

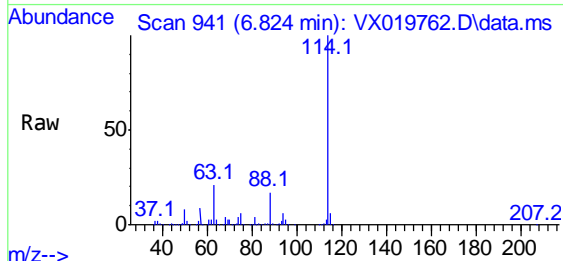
Tgt Ion: 65 Resp: 160247  
 Ion Ratio Lower Upper  
 65 100  
 67 53.1 41.9 62.9



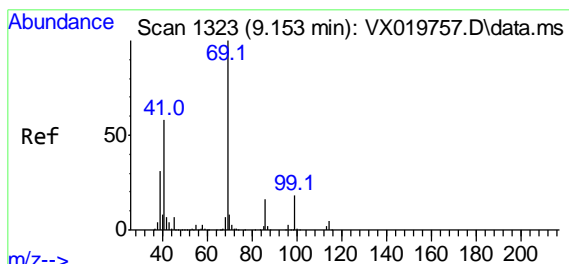
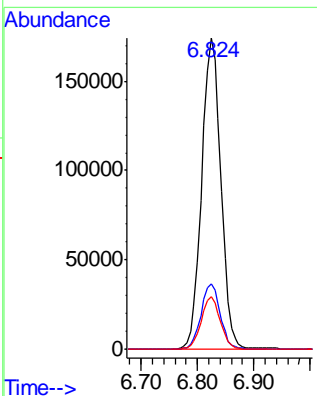
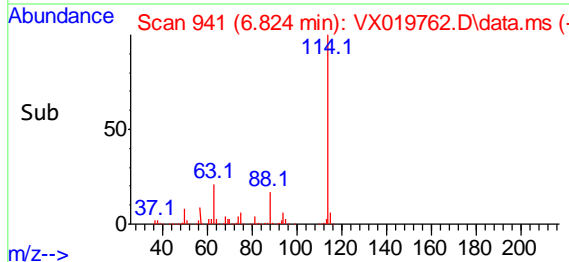


#28  
 1,4-Difluorobenzene  
 Concen: 30.00 ug/l  
 RT: 6.824 min Scan# 941  
 Delta R.T. -0.000 min  
 Lab File: VX019762.D  
 Acq: 08 Dec 2020 16:06

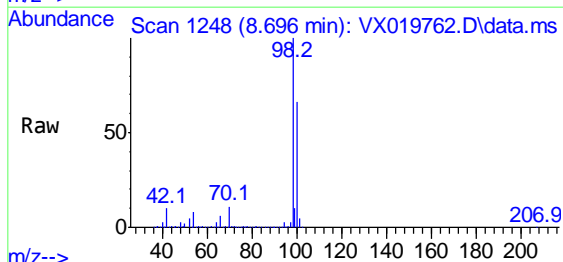
Instrument :  
 MSVOA\_X  
 ClientSampled :  
 VX1208WBL01



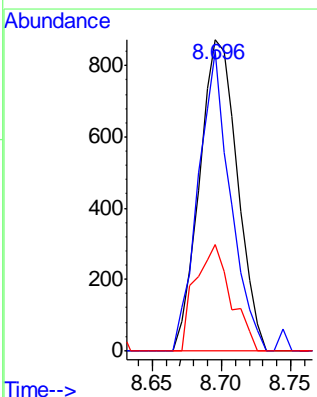
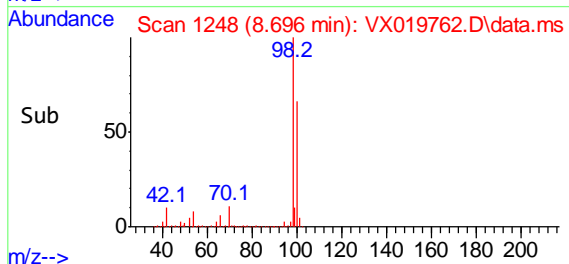
Tgt Ion:114 Resp: 404984  
 Ion Ratio Lower Upper  
 114 100  
 63 20.7 16.2 24.2  
 88 16.4 13.0 19.6

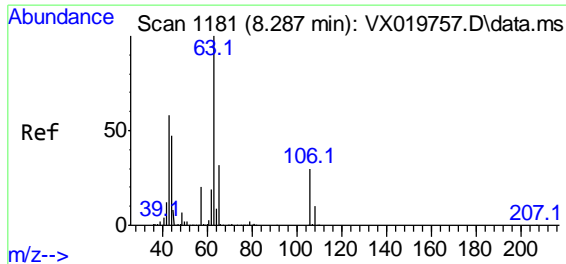


#51  
 Ethyl methacrylate  
 Concen: 0.22 ug/l  
 RT: 8.696 min Scan# 1248  
 Delta R.T. -0.457 min  
 Lab File: VX019762.D  
 Acq: 08 Dec 2020 16:06



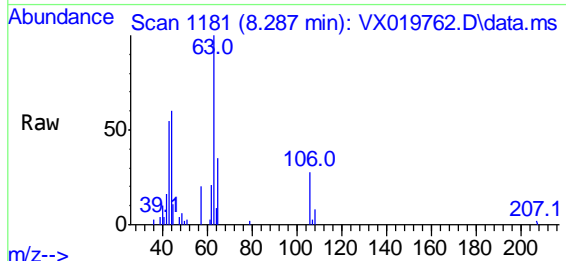
Tgt Ion: 69 Resp: 1655  
 Ion Ratio Lower Upper  
 69 100  
 41 96.1 29.1 87.4#  
 39 34.2 15.4 46.1





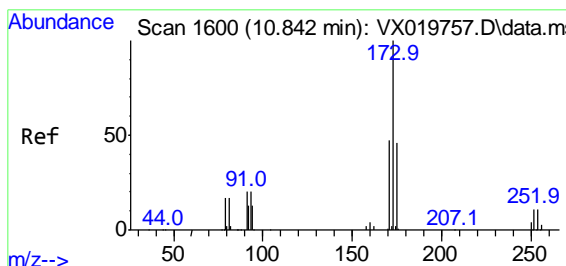
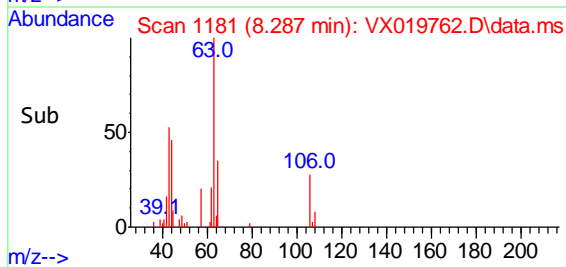
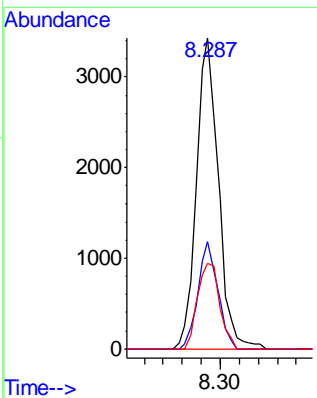
#55  
 2-Chloroethyl vinyl ether  
 Concen: 1.38 ug/l  
 RT: 8.287 min Scan# 1181  
 Delta R.T. -0.000 min  
 Lab File: VX019762.D  
 Acq: 08 Dec 2020 16:06

Instrument :  
 MSVOA\_X  
 ClientSampled :  
 VX1208WBL01

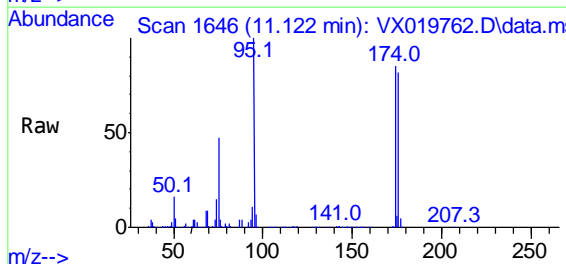


Tgt Ion: 63 Resp: 5409

Ion	Ratio	Lower	Upper
63	100		
65	31.2	25.9	38.9
106	27.8	23.9	35.9

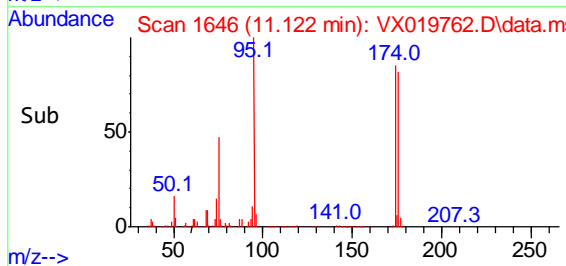
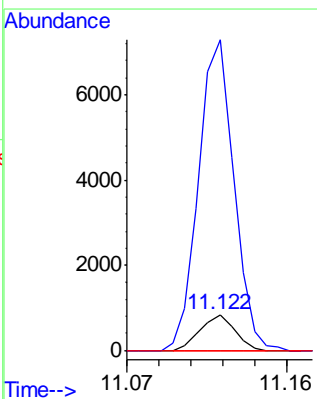


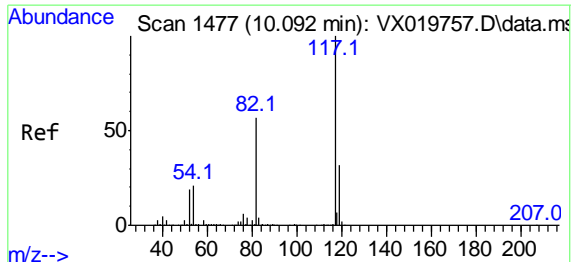
#56  
 Bromoform  
 Concen: 0.27 ug/l  
 RT: 11.122 min Scan# 1646  
 Delta R.T. 0.280 min  
 Lab File: VX019762.D  
 Acq: 08 Dec 2020 16:06



Tgt Ion: 173 Resp: 1033

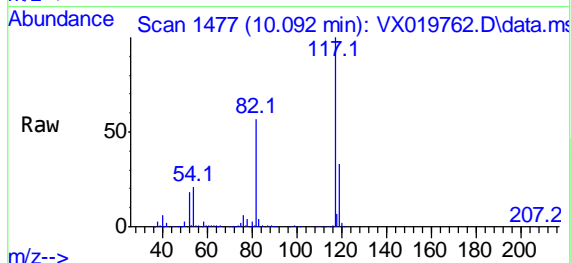
Ion	Ratio	Lower	Upper
173	100		
175	896.7	38.1	57.1#
254	0.0	8.2	12.4#





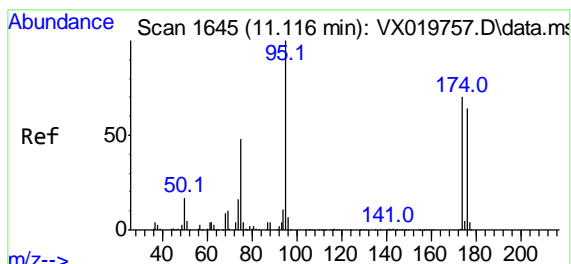
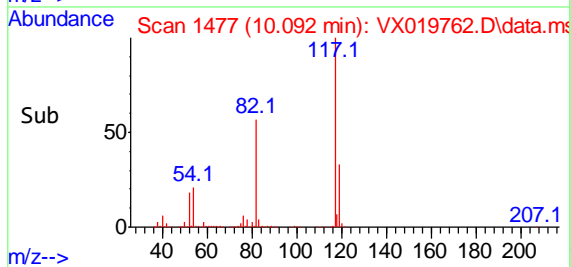
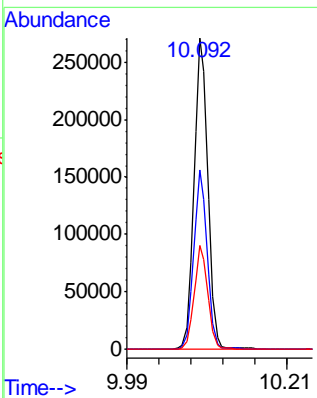
#57  
 Chlorobenzene-d5  
 Concen: 30.00 ug/l  
 RT: 10.092 min Scan# 1477  
 Delta R.T. -0.000 min  
 Lab File: VX019762.D  
 Acq: 08 Dec 2020 16:06

**Instrument :**  
 MSVOA\_X  
**ClientSampled :**  
 VX1208WBL01

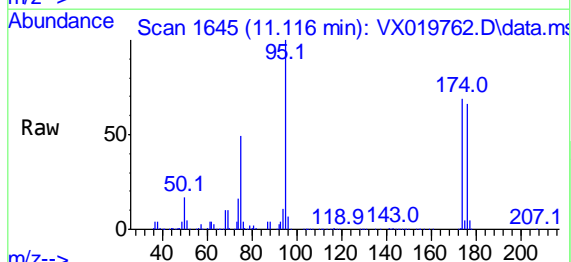


Tgt Ion:117 Resp: 363688

Ion	Ratio	Lower	Upper
117	100		
82	56.1	45.0	67.6
119	32.6	25.6	38.4

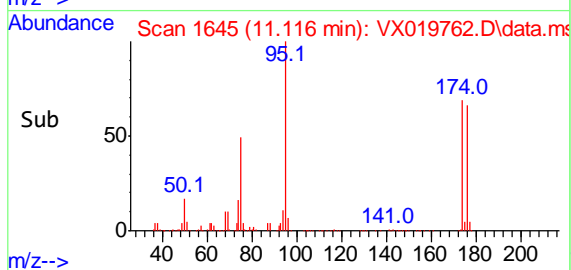
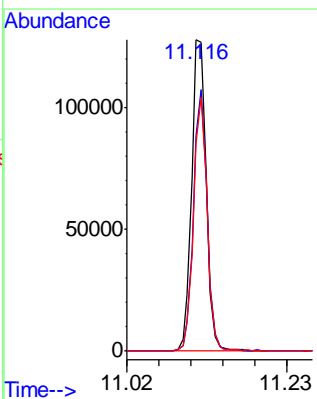


#60  
 4-Bromofluorobenzene  
 Concen: 27.53 ug/l  
 RT: 11.116 min Scan# 1645  
 Delta R.T. -0.000 min  
 Lab File: VX019762.D  
 Acq: 08 Dec 2020 16:06

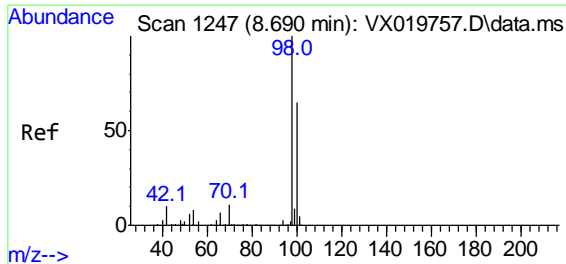


Tgt Ion: 95 Resp: 168157

Ion	Ratio	Lower	Upper
95	100		
174	78.2	63.0	94.4
176	75.8	59.9	89.9

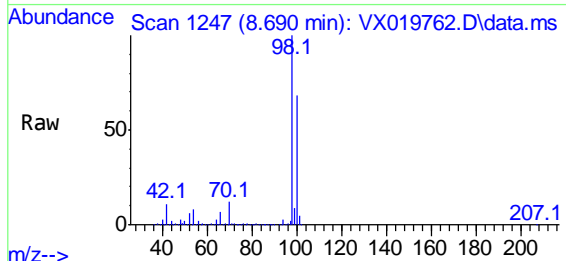




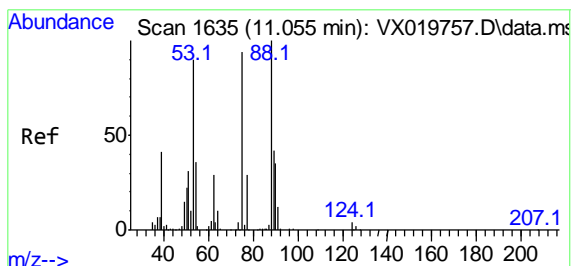
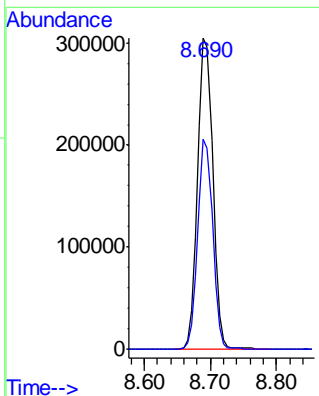
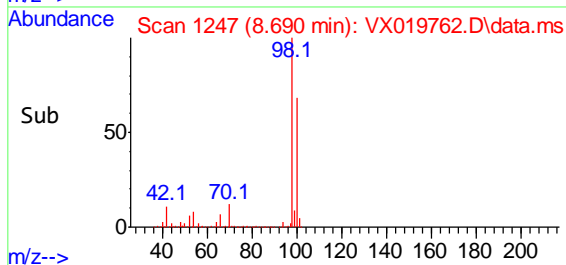


#63  
 Toluene-d8  
 Concen: 30.33 ug/l  
 RT: 8.690 min Scan# 1247  
 Delta R.T. -0.000 min  
 Lab File: VX019762.D  
 Acq: 08 Dec 2020 16:06

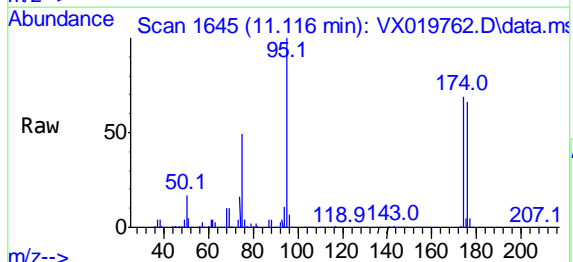
Instrument :  
 MSVOA\_X  
 ClientSampled :  
 VX1208WBL01



Tgt Ion: 98 Resp: 483128  
 Ion Ratio Lower Upper  
 98 100  
 100 66.3 53.0 79.4



#77  
 t-1,4-Dichloro-2-butene  
 Concen: 31.52 ug/l  
 RT: 11.116 min Scan# 1645  
 Delta R.T. 0.061 min  
 Lab File: VX019762.D  
 Acq: 08 Dec 2020 16:06



Tgt Ion: 75 Resp: 80972  
 Ion Ratio Lower Upper  
 75 100  
 53 0.0 48.4 145.0#  
 89 0.0 22.7 68.0#

