

Data Path : Z:\voasrv\HPCHEM1\MSVOA_X\Data\VX120823\
 Data File : VX039100.D
 Acq On : 08 Dec 2023 12:51
 Operator : JC/MD
 Sample : IBLK
 Misc : 5.0mL/MSVOA_X/WATER
 ALS Vial : 9 Sample Multiplier: 1

Instrument :
 MSVOA_X
 ClientSampleId :

Quant Time: Dec 08 23:47:32 2023
 Quant Method : Z:\voasrv\HPCHEM1\MSVOA_X\Method\624X112423W.M
 Quant Title : METHOD 624 VOLATILE ORGANIC ANALYSIS
 QLast Update : Mon Nov 27 03:22:25 2023
 Response via : Initial Calibration

Compound	R.T.	QIon	Response	Conc	Units	Dev(Min)

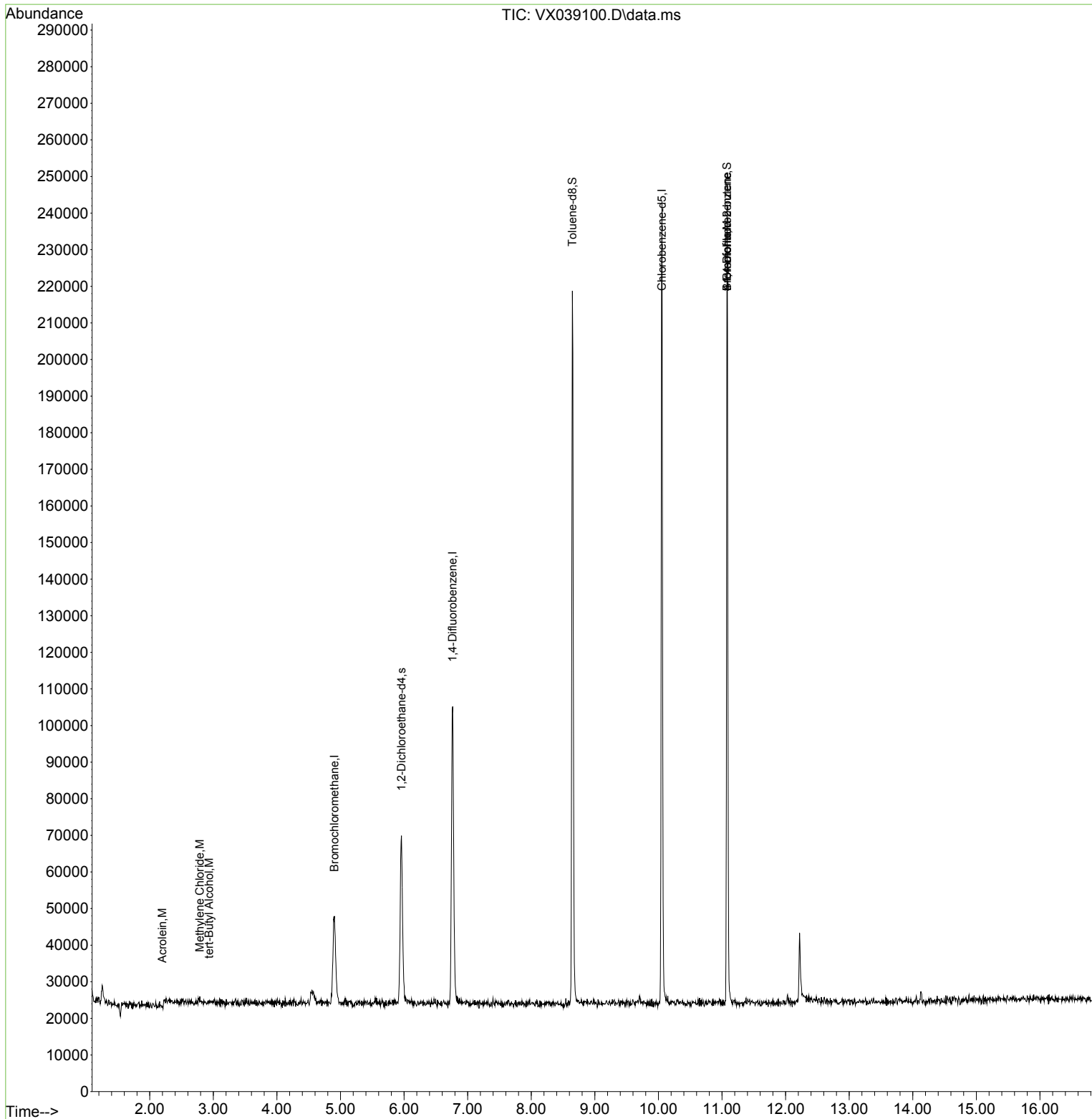
Internal Standards						
1) Bromochloromethane	4.904	128	9703	30.000	ug/l	0.00
28) 1,4-Difluorobenzene	6.763	114	82130	30.000	ug/l	0.00
57) Chlorobenzene-d5	10.055	117	99731	30.000	ug/l	0.00
System Monitoring Compounds						
27) 1,2-Dichloroethane-d4	5.958	65	42370	31.919	ug/l	0.00
Spiked Amount	30.000	Range	91 - 110	Recovery	=	106.400%
60) 4-Bromofluorobenzene	11.079	95	63638	29.214	ug/l	0.00
Spiked Amount	30.000	Range	63 - 112	Recovery	=	97.367%
63) Toluene-d8	8.647	98	118095	29.950	ug/l	0.00
Spiked Amount	30.000	Range	91 - 112	Recovery	=	99.833%
Target Compounds						
						Qvalue
13) Acrolein	2.197	56	79	0.219	ug/l	90
18) Methylene Chloride	2.788	84	564	0.361	ug/l #	70
23) tert-Butyl Alcohol	2.935	59	476	0.854	ug/l #	100
56) Bromoform	11.079	173	348	0.264	ug/l #	1
77) t-1,4-Dichloro-2-butene	11.079	75	32795	33.932	ug/l #	12

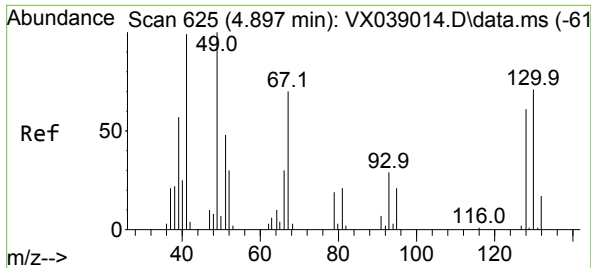
(#) = qualifier out of range (m) = manual integration (+) = signals summed

Data Path : Z:\voasrv\HPCHEM1\MSVOA_X\Data\VX120823\
 Data File : VX039100.D
 Acq On : 08 Dec 2023 12:51
 Operator : JC/MD
 Sample : IBLK
 Misc : 5.0mL/MSVOA_X/WATER
 ALS Vial : 9 Sample Multiplier: 1

Instrument :
 MSVOA_X
 ClientSampleId :

Quant Time: Dec 08 23:47:32 2023
 Quant Method : Z:\voasrv\HPCHEM1\MSVOA_X\Method\624X112423W.M
 Quant Title : METHOD 624 VOLATILE ORGANIC ANALYSIS
 QLast Update : Mon Nov 27 03:22:25 2023
 Response via : Initial Calibration

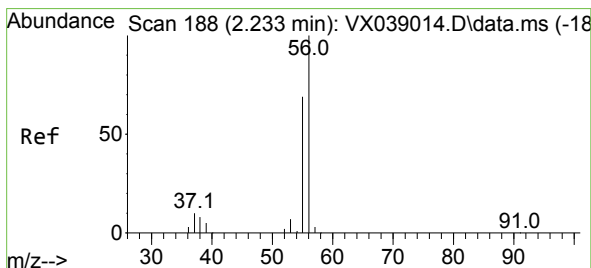
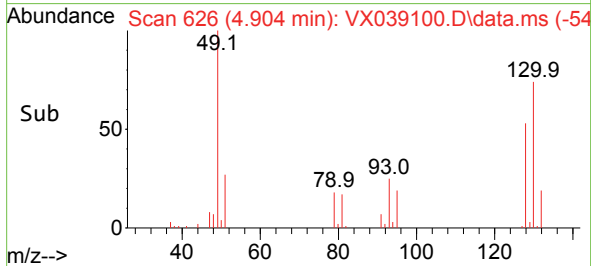
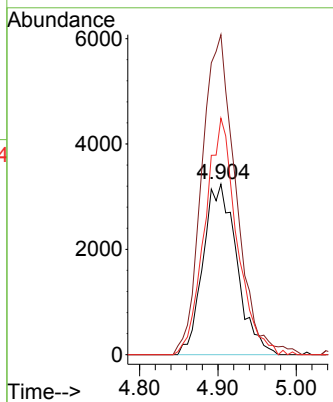
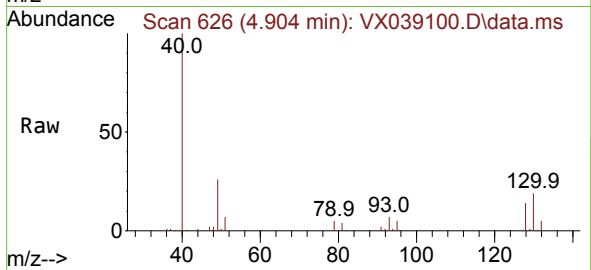




#1
 Bromochloromethane
 Concen: 30.000 ug/l
 RT: 4.904 min Scan# 61
 Delta R.T. 0.007 min
 Lab File: VX039100.D
 Acq: 08 Dec 2023 12:51

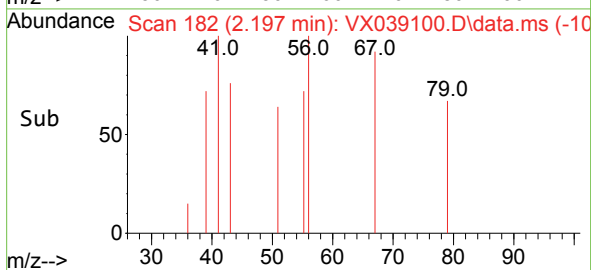
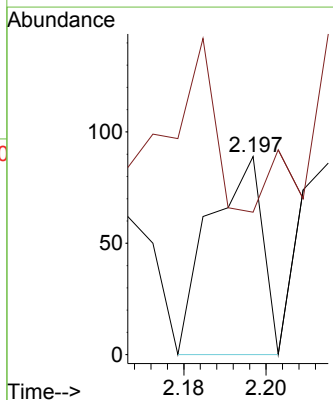
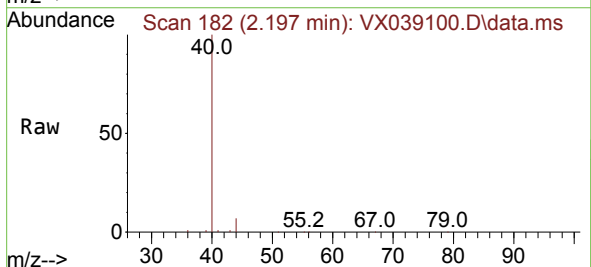
Instrument :
 MSVOA_X
 ClientSampleId :

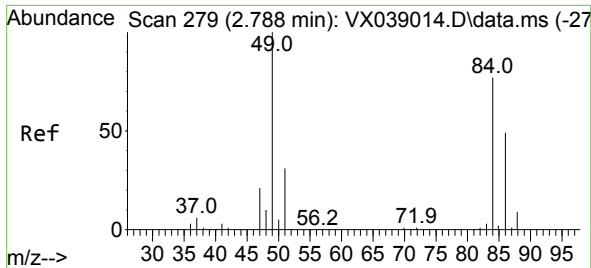
Tgt Ion	Resp	Lower	Upper
128	100		
49	186.9	0.0	444.0
130	131.0	0.0	297.8



#13
 Acrolein
 Concen: 0.219 ug/l
 RT: 2.197 min Scan# 182
 Delta R.T. -0.036 min
 Lab File: VX039100.D
 Acq: 08 Dec 2023 12:51

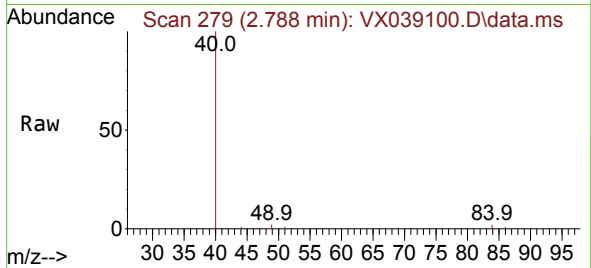
Tgt Ion	Resp	Lower	Upper
56	100		
55	63.3	57.2	85.8





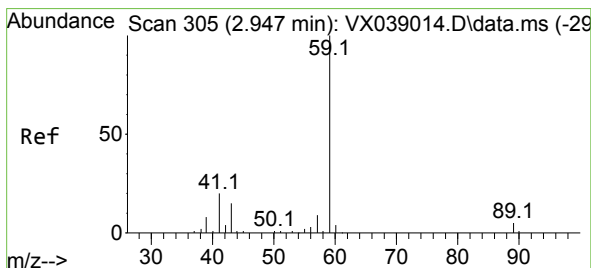
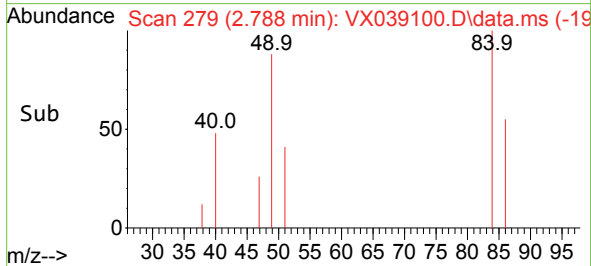
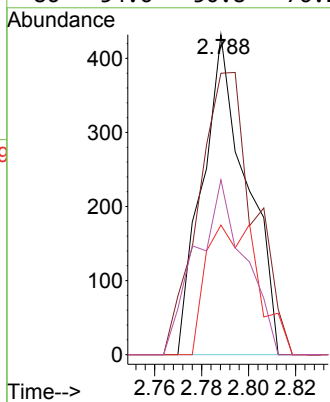
#18
 Methylene Chloride
 Concen: 0.361 ug/l
 RT: 2.788 min Scan# 21
 Delta R.T. 0.000 min
 Lab File: VX039100.D
 Acq: 08 Dec 2023 12:51

Instrument :
 MSVOA_X
 ClientSampleId :



Tgt Ion: 84 Resp: 564

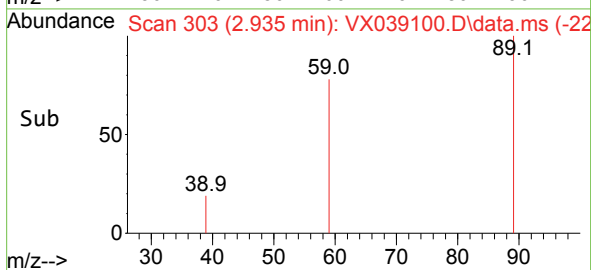
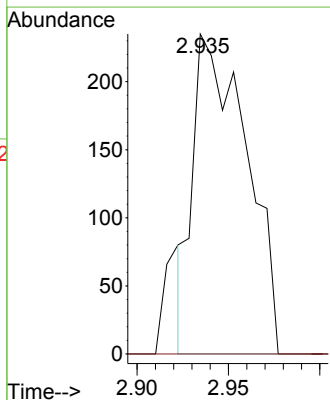
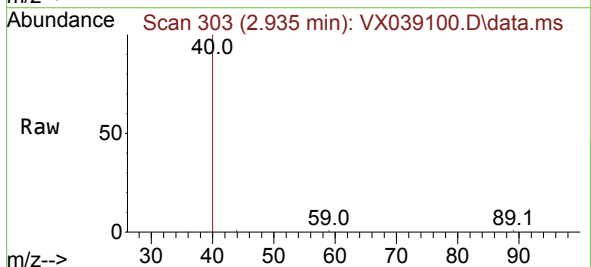
Ion	Ratio	Lower	Upper
84	100		
49	73.8	103.8	155.8#
51	40.5	31.8	47.6
86	54.6	50.8	76.2

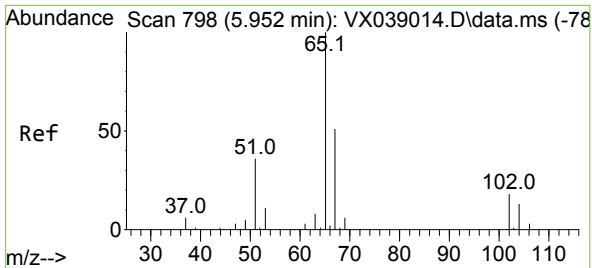


#23
 tert-Butyl Alcohol
 Concen: 0.854 ug/l
 RT: 2.935 min Scan# 303
 Delta R.T. -0.012 min
 Lab File: VX039100.D
 Acq: 08 Dec 2023 12:51

Tgt Ion: 59 Resp: 476

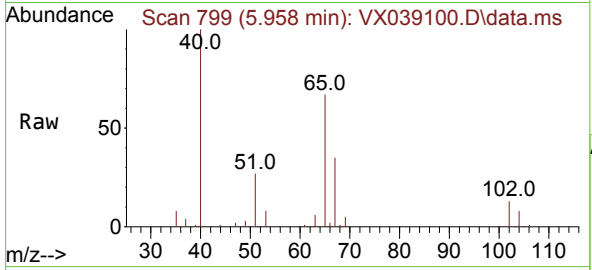
Ion	Ratio	Lower	Upper
59	100		
52	0.0	0.0	0.0



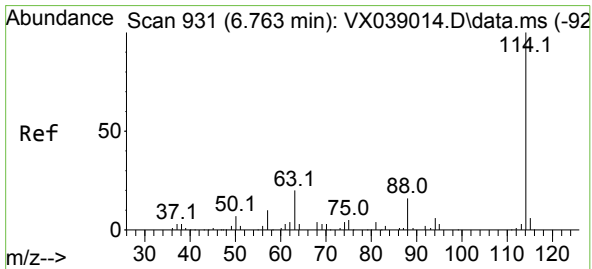
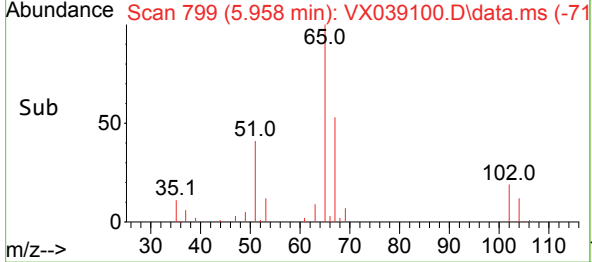
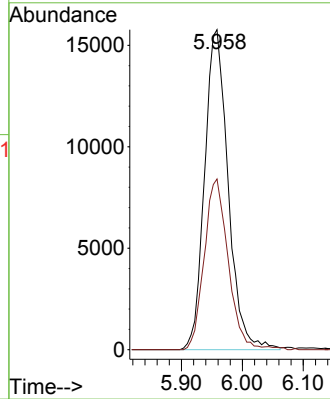


#27
 1,2-Dichloroethane-d4
 Concen: 31.919 ug/l
 RT: 5.958 min Scan# 798
 Delta R.T. 0.006 min
 Lab File: VX039100.D
 Acq: 08 Dec 2023 12:51

Instrument : MSVOA_X
 ClientSampleId :

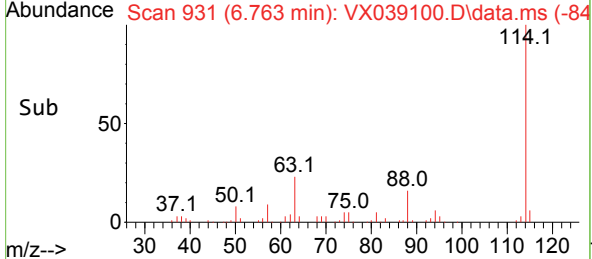
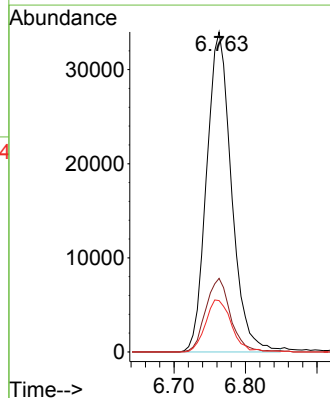
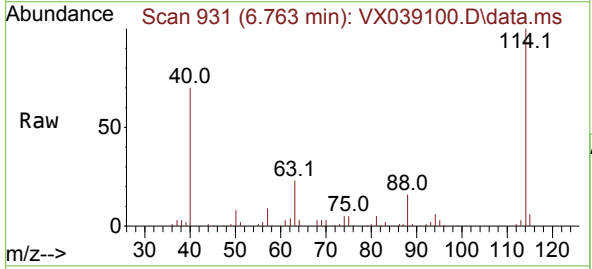


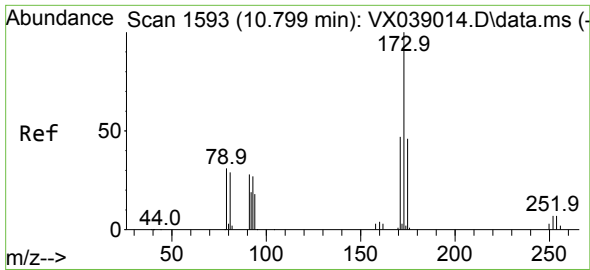
Tgt Ion: 65 Resp: 42370
 Ion Ratio Lower Upper
 65 100
 67 53.8 42.5 63.7



#28
 1,4-Difluorobenzene
 Concen: 30.000 ug/l
 RT: 6.763 min Scan# 931
 Delta R.T. 0.000 min
 Lab File: VX039100.D
 Acq: 08 Dec 2023 12:51

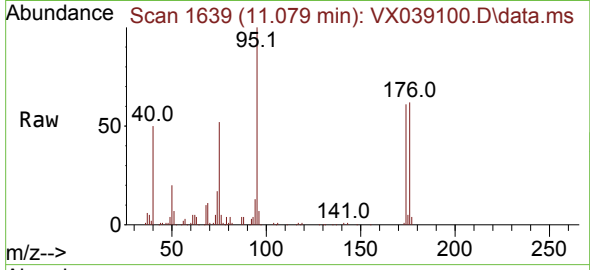
Tgt Ion:114 Resp: 82130
 Ion Ratio Lower Upper
 114 100
 63 22.8 17.0 25.4
 88 16.5 12.7 19.1



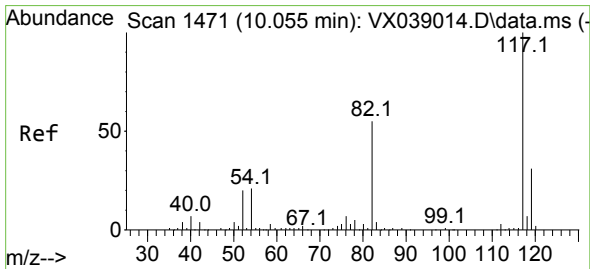
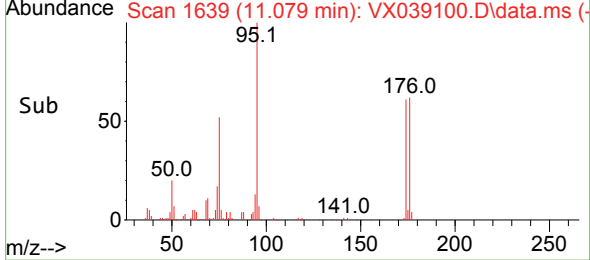
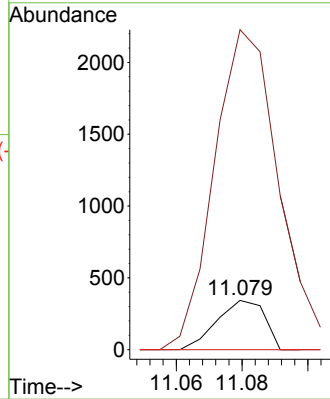


#56
 Bromoform
 Concen: 0.264 ug/l
 RT: 11.079 min Scan# 1639
 Delta R.T. 0.281 min
 Lab File: VX039100.D
 Acq: 08 Dec 2023 12:51

Instrument :
 MSVOA_X
 ClientSampleId :

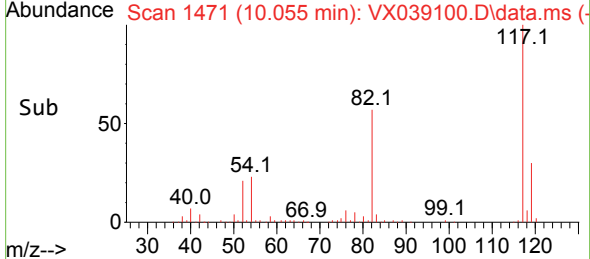
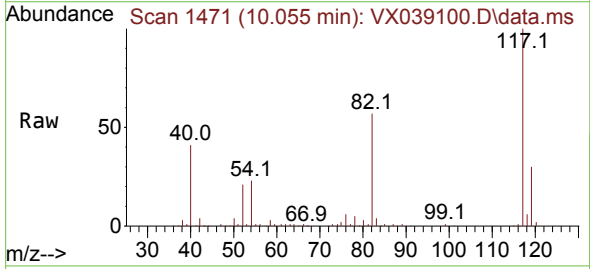
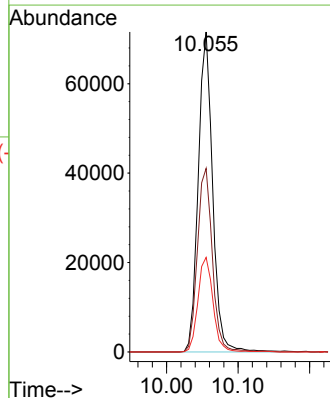


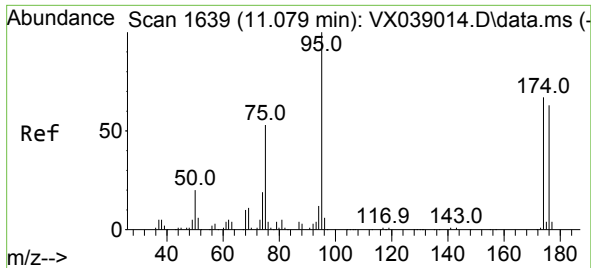
Tgt Ion:173 Resp: 348
 Ion Ratio Lower Upper
 173 100
 175 877.0 37.6 56.4#
 254 0.0 5.8 8.8#



#57
 Chlorobenzene-d5
 Concen: 30.000 ug/l
 RT: 10.055 min Scan# 1471
 Delta R.T. 0.000 min
 Lab File: VX039100.D
 Acq: 08 Dec 2023 12:51

Tgt Ion:117 Resp: 99731
 Ion Ratio Lower Upper
 117 100
 82 59.8 47.0 70.6
 119 30.9 25.2 37.8

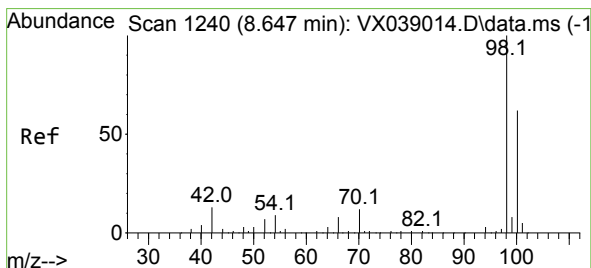
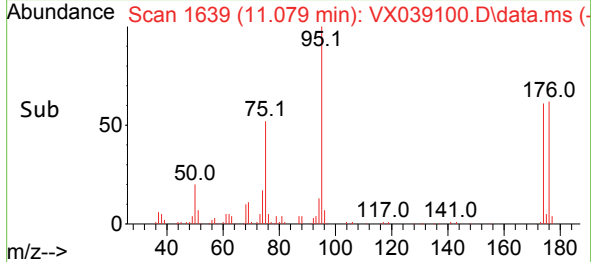
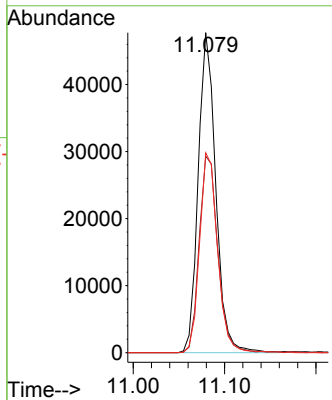
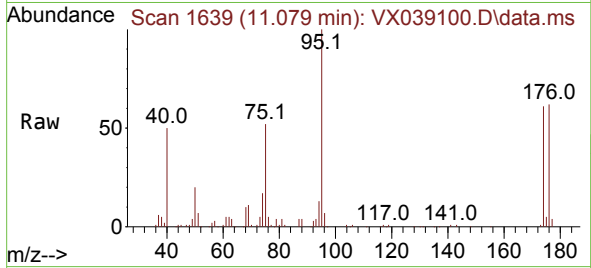




#60
 4-Bromofluorobenzene
 Concen: 29.214 ug/l
 RT: 11.079 min Scan# 1639
 Delta R.T. 0.000 min
 Lab File: VX039100.D
 Acq: 08 Dec 2023 12:51

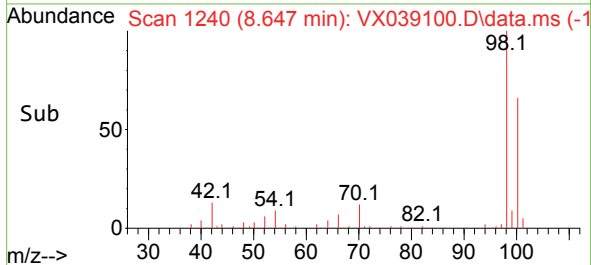
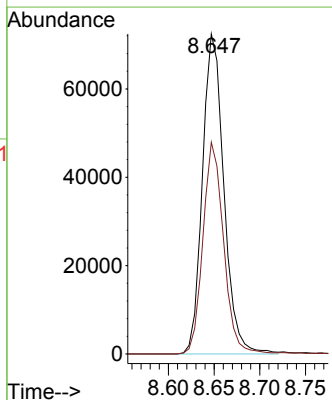
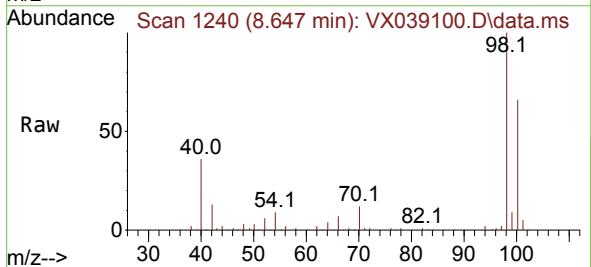
Instrument : MSVOA_X
 ClientSampleId :

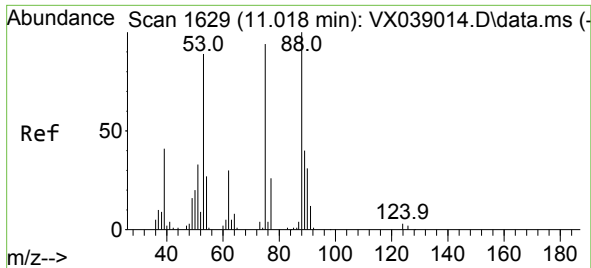
Tgt Ion: 95 Resp: 63638
 Ion Ratio Lower Upper
 95 100
 174 65.1 55.4 83.2
 176 63.7 52.6 78.8



#63
 Toluene-d8
 Concen: 29.950 ug/l
 RT: 8.647 min Scan# 1240
 Delta R.T. 0.000 min
 Lab File: VX039100.D
 Acq: 08 Dec 2023 12:51

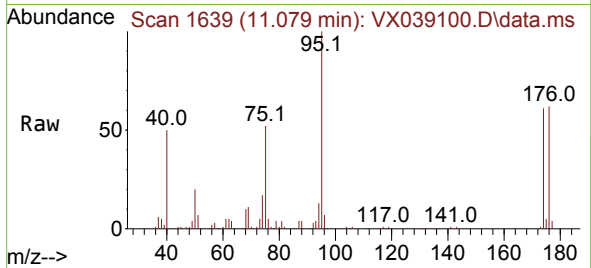
Tgt Ion: 98 Resp: 118095
 Ion Ratio Lower Upper
 98 100
 100 63.7 51.0 76.4





#77
 t-1,4-Dichloro-2-butene
 Concen: 33.932 ug/l
 RT: 11.079 min Scan# 1
 Delta R.T. 0.061 min
 Lab File: VX039100.D
 Acq: 08 Dec 2023 12:51

Instrument :
 MSVOA_X
 ClientSampleId :



Tgt Ion: 75 Resp: 32795
 Ion Ratio Lower Upper
 75 100
 53 0.0 46.9 140.8#
 89 0.0 21.3 63.7#

