

Data Path : Z:\voasrv\HPCHEM1\MSVOA\_X\Data\VX120825\  
 Data File : VX048750.D  
 Acq On : 08 Dec 2025 13:35  
 Operator : JC/MD  
 Sample : Q3787-02  
 Misc : 5.0mL/MSVOA\_X/WATER  
 ALS Vial : 10 Sample Multiplier: 1

Instrument :  
 MSVOA\_X  
 ClientSampleId :  
 MW-15B-42.5-120425MS

Quant Time: Dec 09 04:09:49 2025  
 Quant Method : Z:\voasrv\HPCHEM1\MSVOA\_X\Method\82X120425W.M  
 Quant Title : SW846 8260  
 QLast Update : Fri Dec 05 03:27:34 2025  
 Response via : Initial Calibration

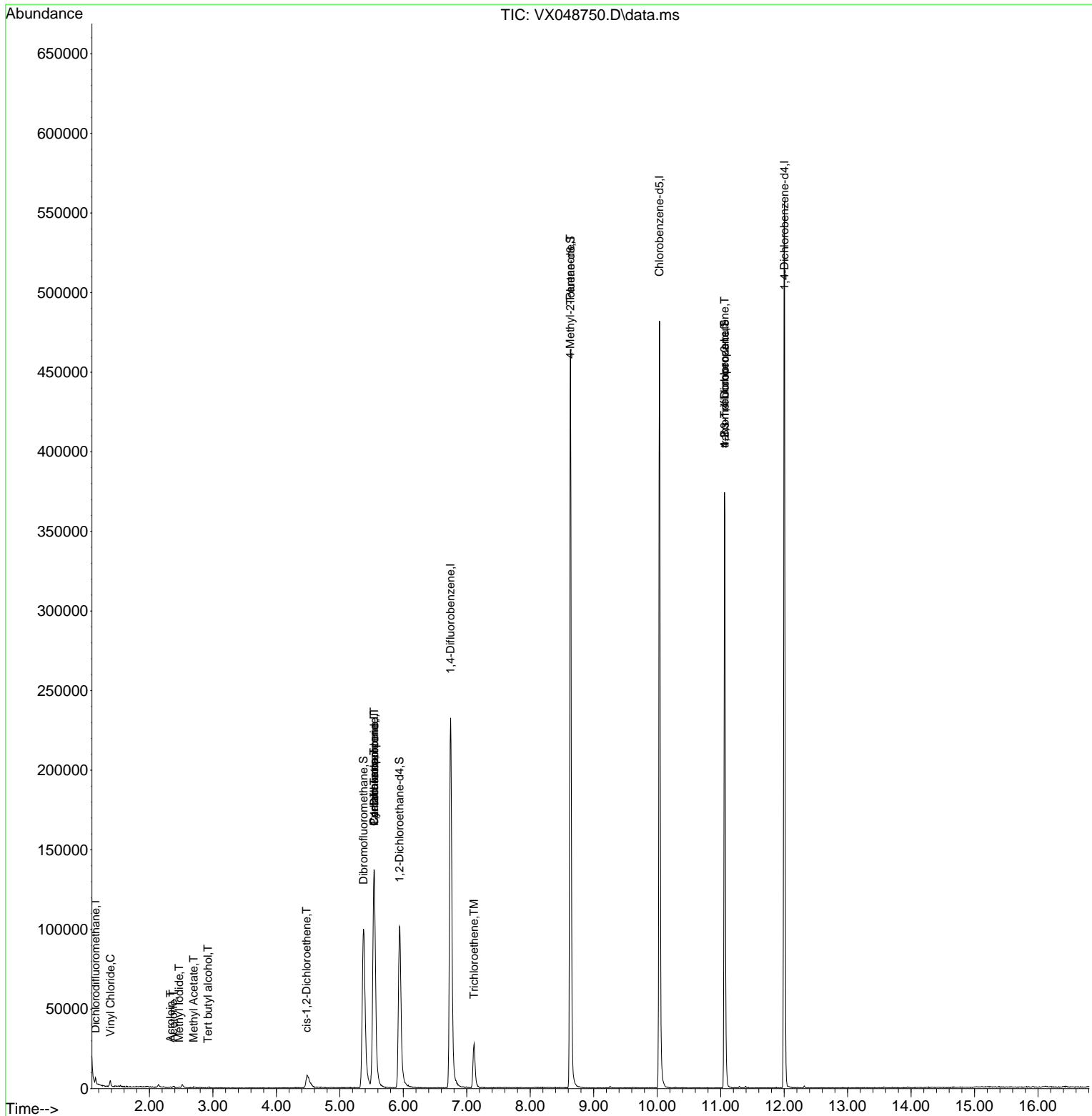
Compound	R.T.	QIon	Response	Conc	Units	Dev(Min)
-----						
Internal Standards						
1) Pentafluorobenzene	5.544	168	137818	50.000	ug/l	0.00
34) 1,4-Difluorobenzene	6.745	114	254506	50.000	ug/l	0.00
63) Chlorobenzene-d5	10.037	117	219870	50.000	ug/l	0.00
72) 1,4-Dichlorobenzene-d4	12.006	152	118869	50.000	ug/l	0.00
System Monitoring Compounds						
33) 1,2-Dichloroethane-d4	5.940	65	112523	60.831	ug/l	0.00
Spiked Amount	50.000	Range 78 - 117	Recovery	=	121.660%#	
35) Dibromofluoromethane	5.373	113	100776	57.508	ug/l	0.00
Spiked Amount	50.000	Range 75 - 124	Recovery	=	115.020%	
50) Toluene-d8	8.635	98	284538	46.322	ug/l	0.00
Spiked Amount	50.000	Range 92 - 112	Recovery	=	92.640%	
62) 4-Bromofluorobenzene	11.061	95	99977	47.200	ug/l	0.00
Spiked Amount	50.000	Range 83 - 123	Recovery	=	94.400%	
Target Compounds						
						Qvalue
2) Dichlorodifluoromethane	1.148	85	322	0.229	ug/l	93
4) Vinyl Chloride	1.386	62	2106	1.116	ug/l #	88
10) Methyl Iodide	2.465	142	463	0.207	ug/l #	77
11) Tert butyl alcohol	2.922	59	132	0.442	ug/l #	73
13) Acrolein	2.331	56	23	40.244	ug/l #	15
16) Acetone	2.373	43	1317	1.860	ug/l #	82
18) Methyl Acetate	2.697	43	589	0.296	ug/l #	87
27) cis-1,2-Dichloroethene	4.477	96	5959	3.233	ug/l	95
31) Cyclohexane	5.538	56	3031	1.212	ug/l #	24
36) 1,1-Dichloropropene	5.544	75	11919	4.966	ug/l #	48
38) Carbon Tetrachloride	5.544	117	14509	5.337	ug/l #	16
44) Trichloroethene	7.117	130	12005	6.466	ug/l	99
51) 4-Methyl-2-Pentanone	8.628	43	1320	0.490	ug/l #	1
76) 1,2,3-Trichloropropane	11.061	75	54050	24.413	ug/l #	30
81) trans-1,4-Dichloro-2-b...	11.061	75	54050	57.991	ug/l #	3
95) Naphthalene	13.768	128	158	Below Cal	#	69

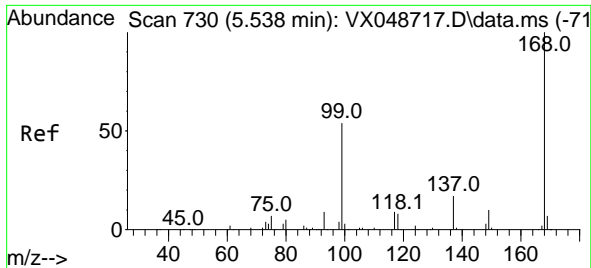
(#) = qualifier out of range (m) = manual integration (+) = signals summed

Data Path : Z:\voasrv\HPCHEM1\MSVOA\_X\Data\VX120825\  
 Data File : VX048750.D  
 Acq On : 08 Dec 2025 13:35  
 Operator : JC/MD  
 Sample : Q3787-02  
 Misc : 5.0mL/MSVOA\_X/WATER  
 ALS Vial : 10 Sample Multiplier: 1

Instrument :  
 MSVOA\_X  
 ClientSampleId :  
 MW-15B-42.5-120425MS

Quant Time: Dec 09 04:09:49 2025  
 Quant Method : Z:\voasrv\HPCHEM1\MSVOA\_X\Method\82X120425W.M  
 Quant Title : SW846 8260  
 QLast Update : Fri Dec 05 03:27:34 2025  
 Response via : Initial Calibration

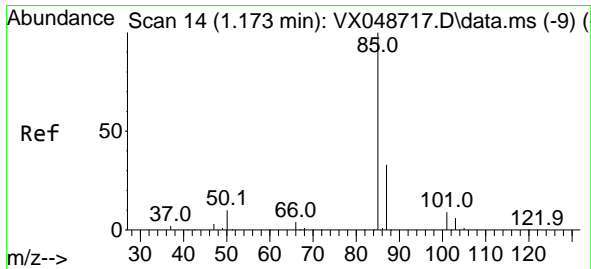
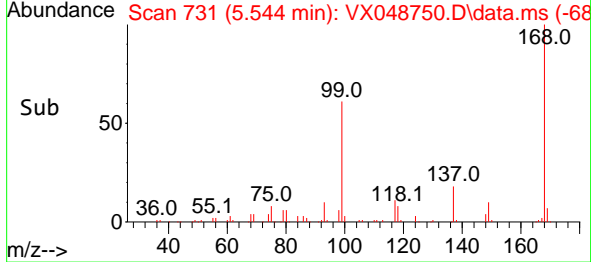
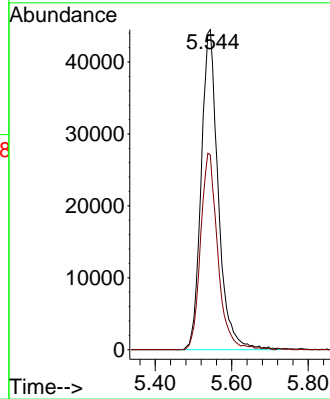
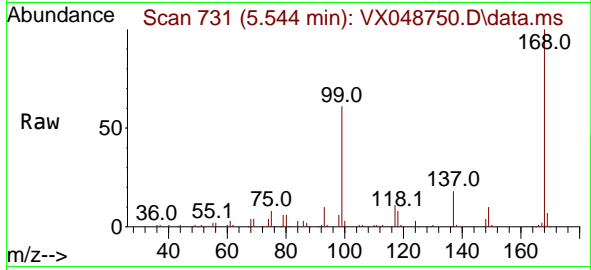




#1  
 Pentafluorobenzene  
 Concen: 50.000 ug/l  
 RT: 5.544 min Scan# 71  
 Delta R.T. 0.006 min  
 Lab File: VX048750.D  
 Acq: 08 Dec 2025 13:35

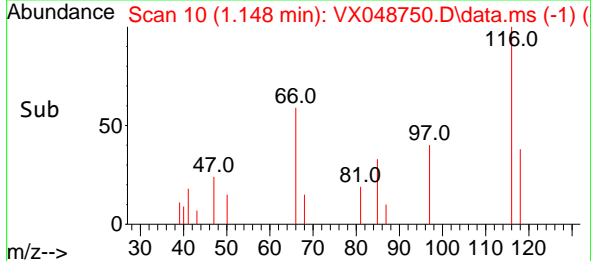
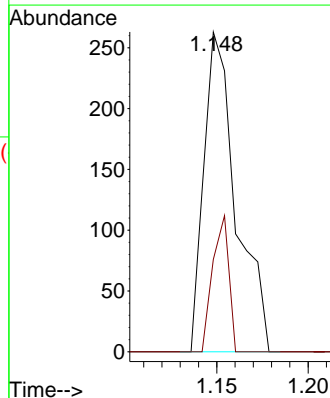
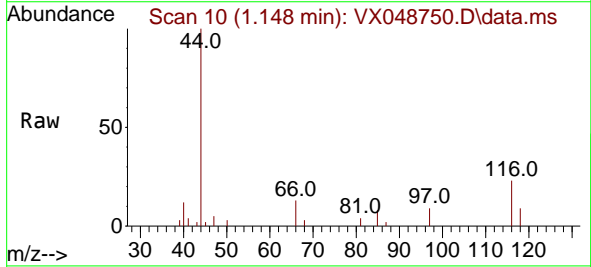
Instrument : MSVOA\_X  
 ClientSampleId : MW-15B-42.5-120425MS

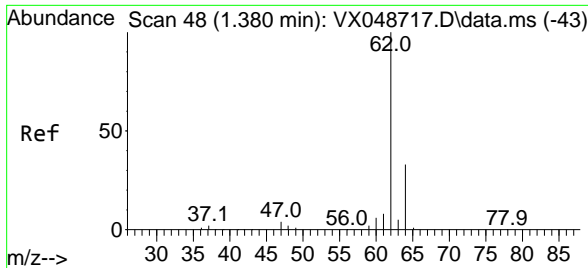
Tgt Ion:168 Resp: 137818  
 Ion Ratio Lower Upper  
 168 100  
 99 60.9 44.2 66.4



#2  
 Dichlorodifluoromethane  
 Concen: 0.229 ug/l  
 RT: 1.148 min Scan# 10  
 Delta R.T. -0.024 min  
 Lab File: VX048750.D  
 Acq: 08 Dec 2025 13:35

Tgt Ion: 85 Resp: 322  
 Ion Ratio Lower Upper  
 85 100  
 87 28.9 16.4 49.1

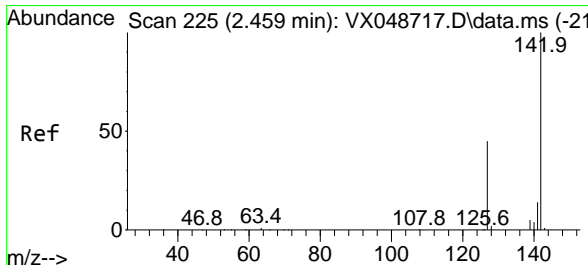
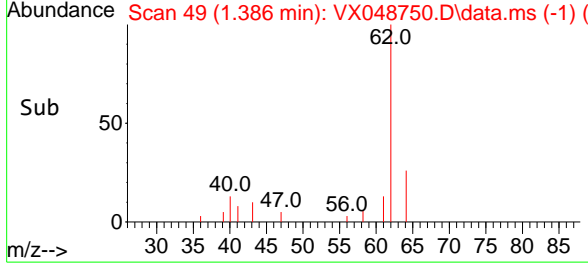
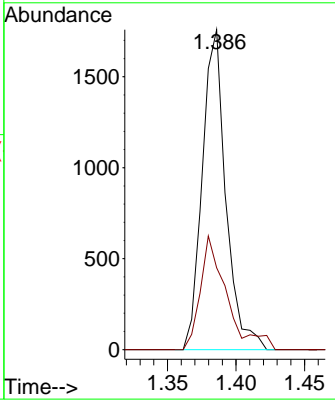
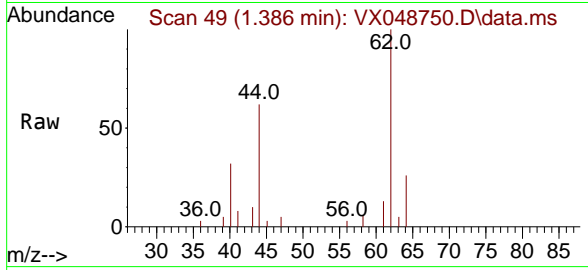




#4  
 Vinyl Chloride  
 Concen: 1.116 ug/l  
 RT: 1.386 min Scan# 49  
 Delta R.T. 0.006 min  
 Lab File: VX048750.D  
 Acq: 08 Dec 2025 13:35

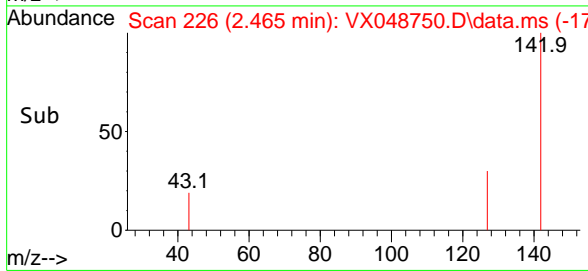
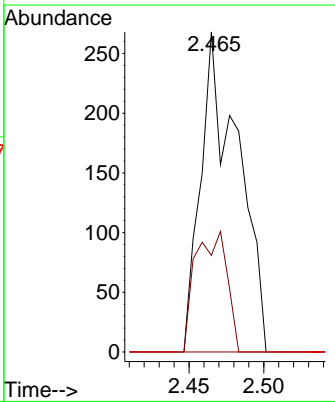
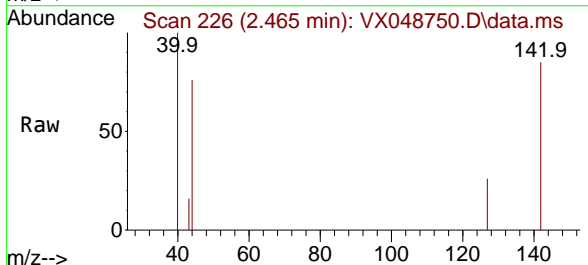
Instrument : MSVOA\_X  
 ClientSampleId : MW-15B-42.5-120425MS

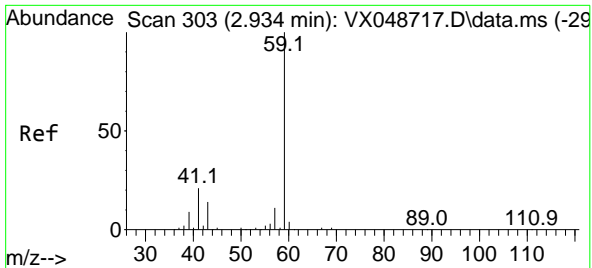
Tgt Ion: 62 Resp: 2106  
 Ion Ratio Lower Upper  
 62 100  
 64 25.6 26.0 39.0#



#10  
 Methyl Iodide  
 Concen: 0.207 ug/l  
 RT: 2.465 min Scan# 226  
 Delta R.T. 0.006 min  
 Lab File: VX048750.D  
 Acq: 08 Dec 2025 13:35

Tgt Ion: 142 Resp: 463  
 Ion Ratio Lower Upper  
 142 100  
 127 32.0 35.8 53.6#  
 141 0.0 11.1 16.7#

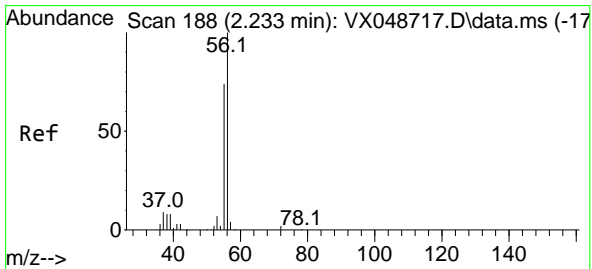
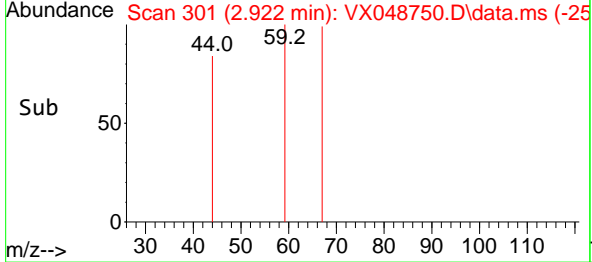
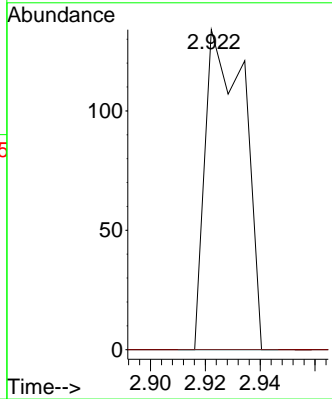
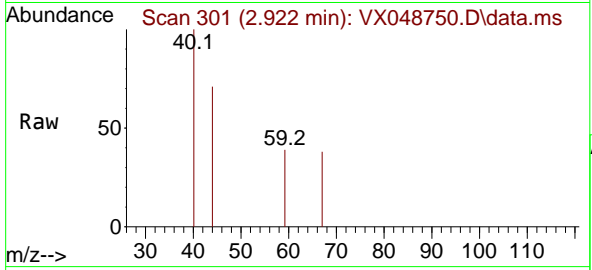




#11  
 Tert butyl alcohol  
 Concen: 0.442 ug/l  
 RT: 2.922 min Scan# 301  
 Delta R.T. -0.012 min  
 Lab File: VX048750.D  
 Acq: 08 Dec 2025 13:35

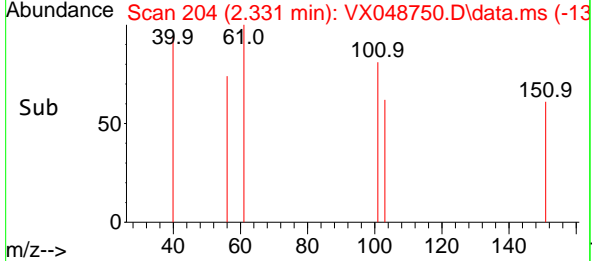
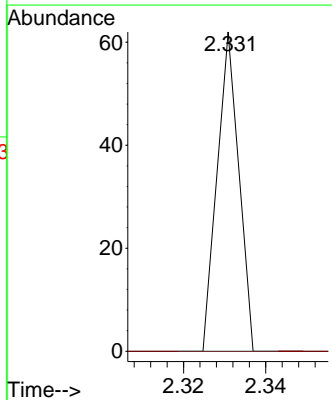
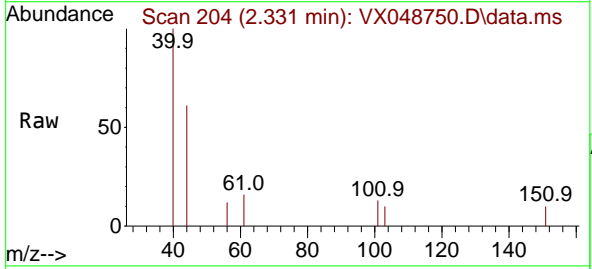
Instrument : MSVOA\_X  
 ClientSampleId : MW-15B-42.5-120425MS

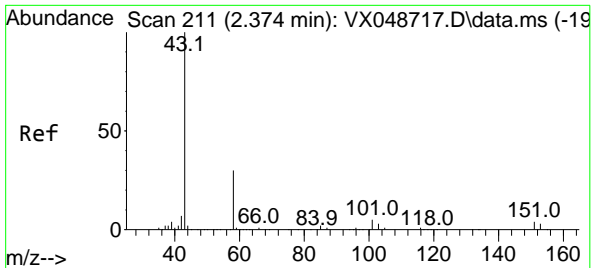
Tgt Ion: 59 Resp: 132  
 Ion Ratio Lower Upper  
 59 100  
 57 0.0 8.1 12.1#



#13  
 Acrolein  
 Concen: 40.244 ug/l  
 RT: 2.331 min Scan# 204  
 Delta R.T. 0.097 min  
 Lab File: VX048750.D  
 Acq: 08 Dec 2025 13:35

Tgt Ion: 56 Resp: 23  
 Ion Ratio Lower Upper  
 56 100  
 55 0.0 55.8 83.6#

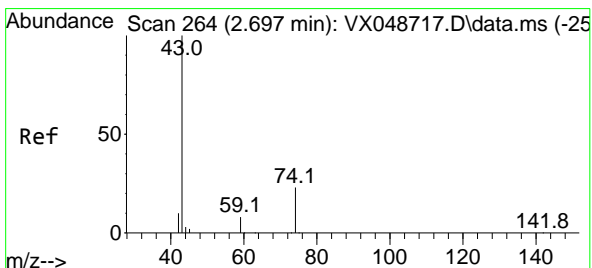
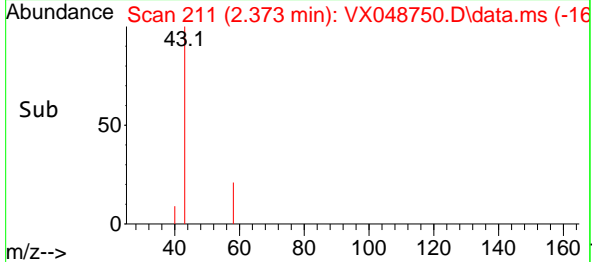
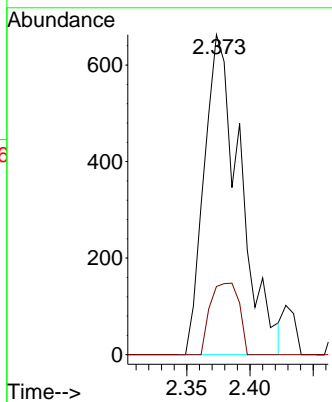
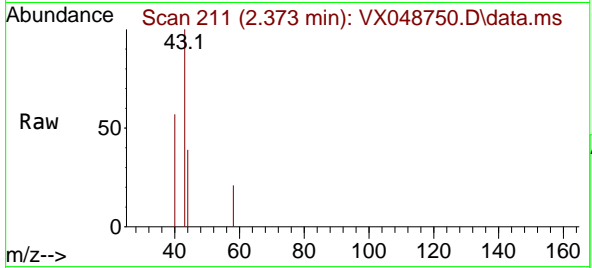




#16  
 Acetone  
 Concen: 1.860 ug/l  
 RT: 2.373 min Scan# 211  
 Delta R.T. -0.000 min  
 Lab File: VX048750.D  
 Acq: 08 Dec 2025 13:35

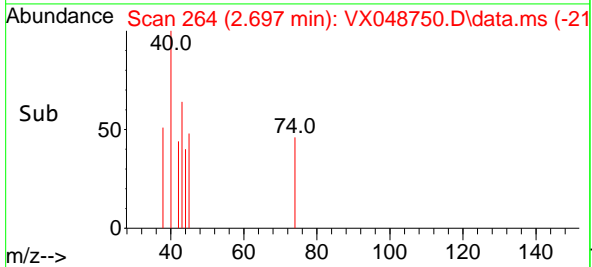
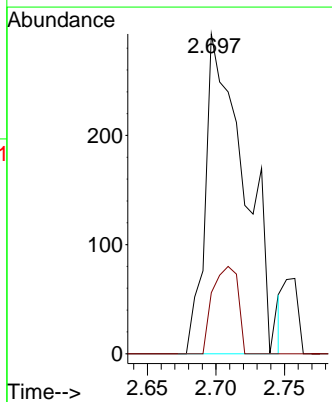
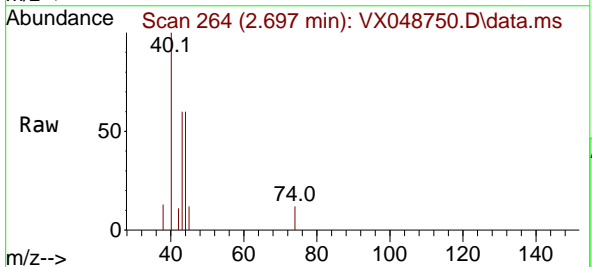
Instrument : MSVOA\_X  
 ClientSampleId : MW-15B-42.5-120425MS

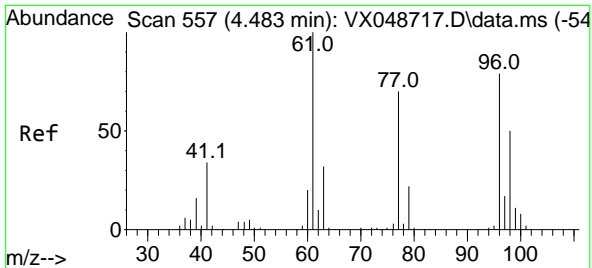
Tgt Ion: 43 Resp: 1317  
 Ion Ratio Lower Upper  
 43 100  
 58 21.3 25.0 37.4#



#18  
 Methyl Acetate  
 Concen: 0.296 ug/l  
 RT: 2.697 min Scan# 264  
 Delta R.T. -0.000 min  
 Lab File: VX048750.D  
 Acq: 08 Dec 2025 13:35

Tgt Ion: 43 Resp: 589  
 Ion Ratio Lower Upper  
 43 100  
 74 17.5 19.2 28.8#

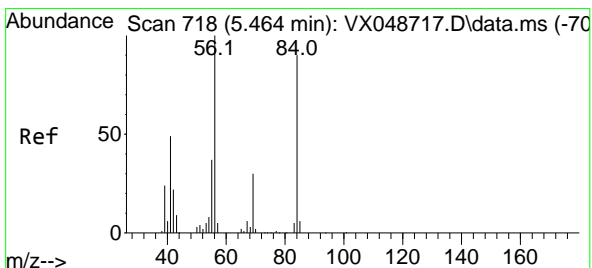
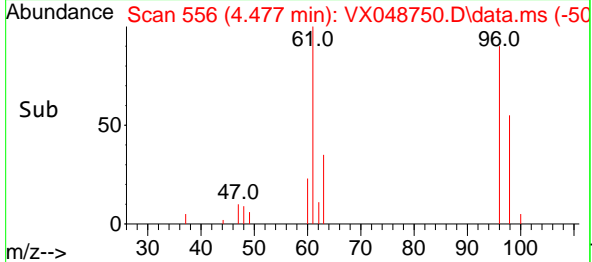
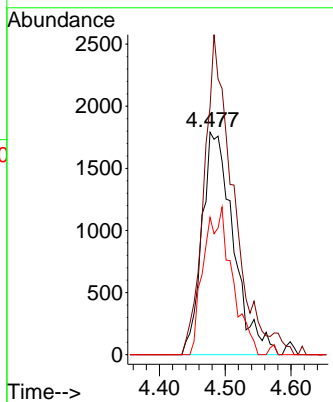
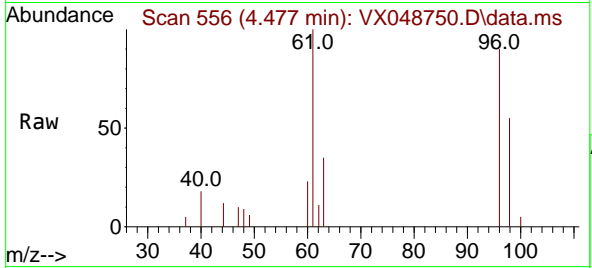




#27  
 cis-1,2-Dichloroethene  
 Concen: 3.233 ug/l  
 RT: 4.477 min Scan# 51  
 Delta R.T. -0.006 min  
 Lab File: VX048750.D  
 Acq: 08 Dec 2025 13:35

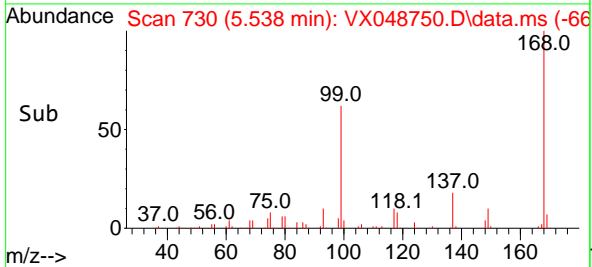
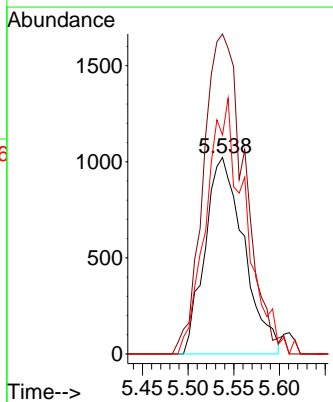
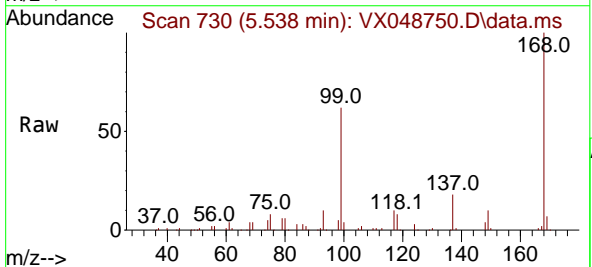
Instrument : MSVOA\_X  
 ClientSampleId : MW-15B-42.5-120425MS

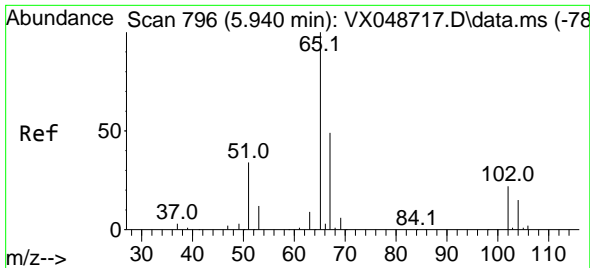
Tgt Ion	Resp	Ion Ratio	Lower	Upper
96	5959	100		
61		131.0	0.0	271.0
98		59.7	0.0	130.2



#31  
 Cyclohexane  
 Concen: 1.212 ug/l  
 RT: 5.538 min Scan# 730  
 Delta R.T. 0.073 min  
 Lab File: VX048750.D  
 Acq: 08 Dec 2025 13:35

Tgt Ion	Resp	Ion Ratio	Lower	Upper
56	3031	100		
69		157.1	24.2	36.2#
84		111.4	72.1	108.1#

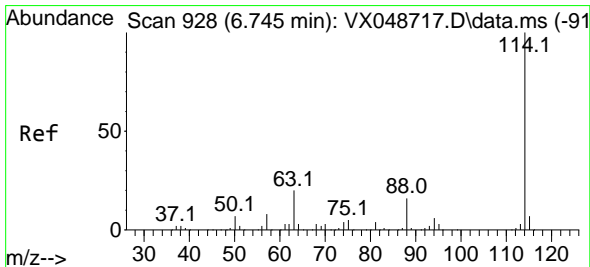
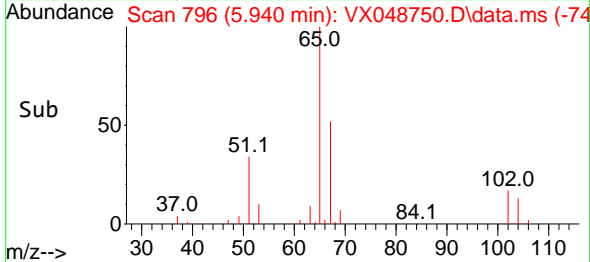
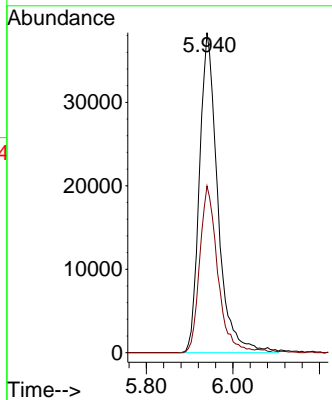
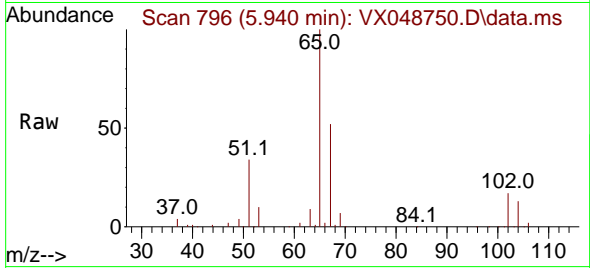




#33  
 1,2-Dichloroethane-d4  
 Concen: 60.831 ug/l  
 RT: 5.940 min Scan# 796  
 Delta R.T. -0.000 min  
 Lab File: VX048750.D  
 Acq: 08 Dec 2025 13:35

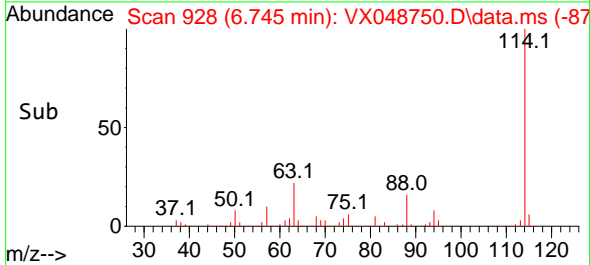
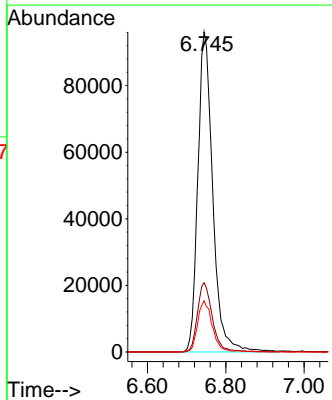
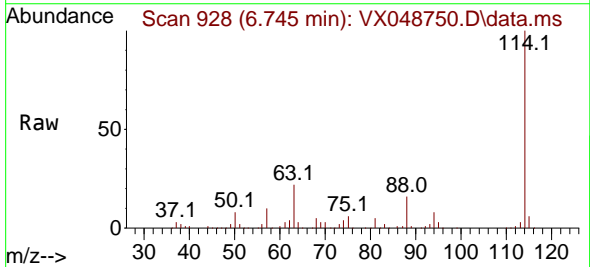
Instrument : MSVOA\_X  
 ClientSampleId : MW-15B-42.5-120425MS

Tgt Ion: 65 Resp: 112523  
 Ion Ratio Lower Upper  
 65 100  
 67 51.1 0.0 107.4

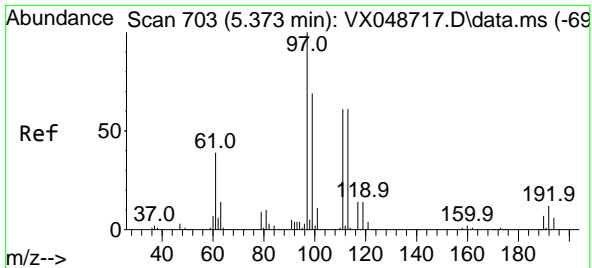


#34  
 1,4-Difluorobenzene  
 Concen: 50.000 ug/l  
 RT: 6.745 min Scan# 928  
 Delta R.T. -0.000 min  
 Lab File: VX048750.D  
 Acq: 08 Dec 2025 13:35

Tgt Ion: 114 Resp: 254506  
 Ion Ratio Lower Upper  
 114 100  
 63 21.6 0.0 39.0  
 88 16.0 0.0 31.8

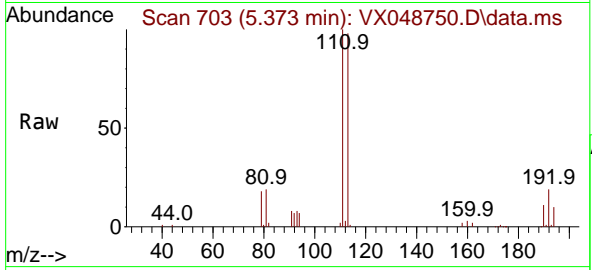






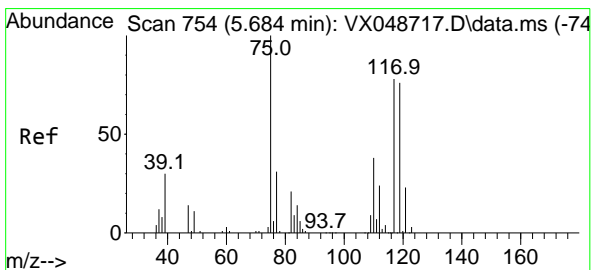
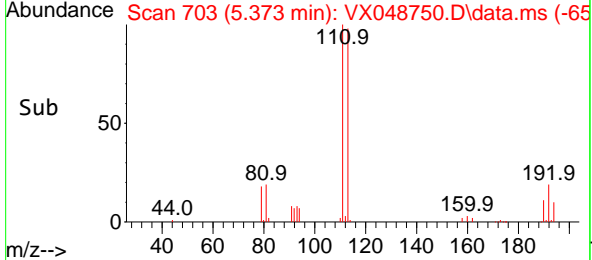
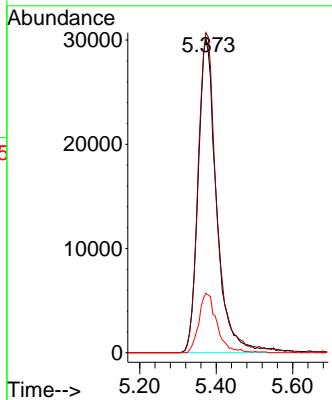
#35  
 Dibromofluoromethane  
 Concen: 57.508 ug/l  
 RT: 5.373 min Scan# 703  
 Delta R.T. -0.000 min  
 Lab File: VX048750.D  
 Acq: 08 Dec 2025 13:35

Instrument : MSVOA\_X  
 ClientSampleId : MW-15B-42.5-120425MS



Tgt Ion: 113 Resp: 100776

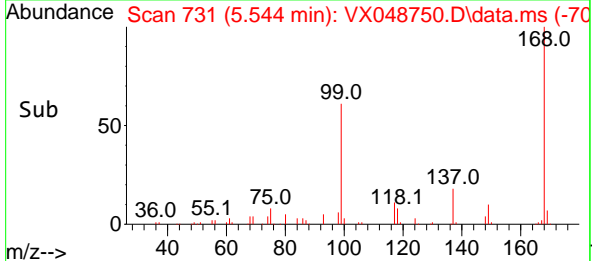
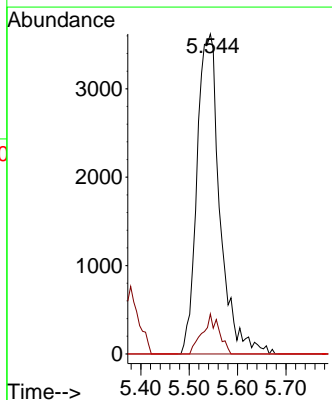
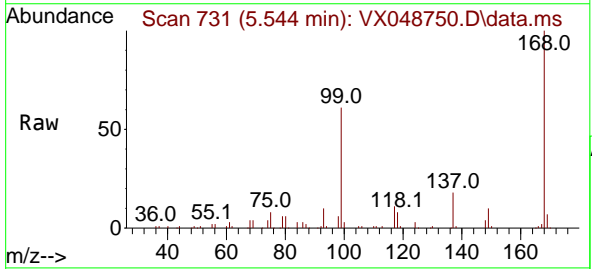
Ion	Ratio	Lower	Upper
113	100		
111	101.0	79.5	119.3
192	18.4	16.1	24.1

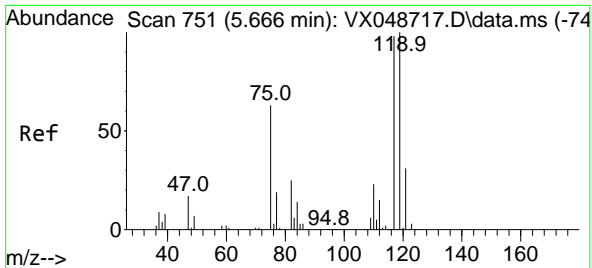


#36  
 1,1-Dichloropropene  
 Concen: 4.966 ug/l  
 RT: 5.544 min Scan# 731  
 Delta R.T. -0.140 min  
 Lab File: VX048750.D  
 Acq: 08 Dec 2025 13:35

Tgt Ion: 75 Resp: 11919

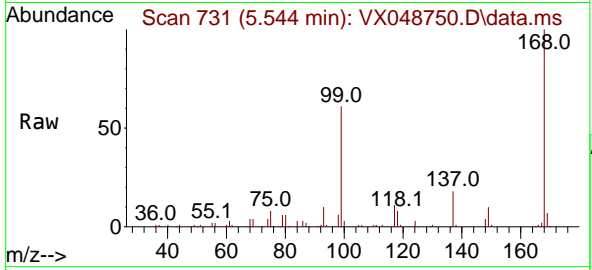
Ion	Ratio	Lower	Upper
75	100		
110	9.0	18.6	55.8#
77	0.0	25.3	37.9#



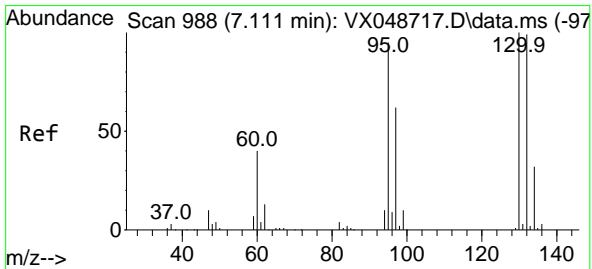
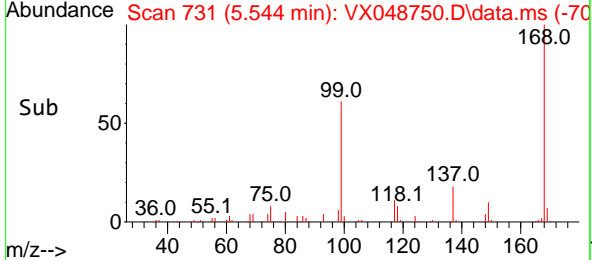
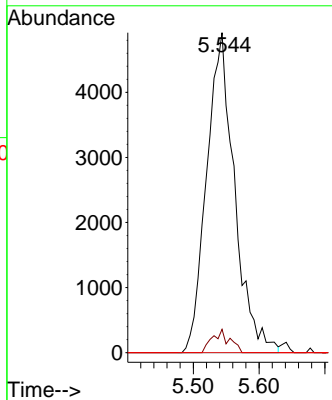


#38  
 Carbon Tetrachloride  
 Concen: 5.337 ug/l  
 RT: 5.544 min Scan# 711  
 Delta R.T. -0.122 min  
 Lab File: VX048750.D  
 Acq: 08 Dec 2025 13:35

Instrument : MSVOA\_X  
 ClientSampleId : MW-15B-42.5-120425MS

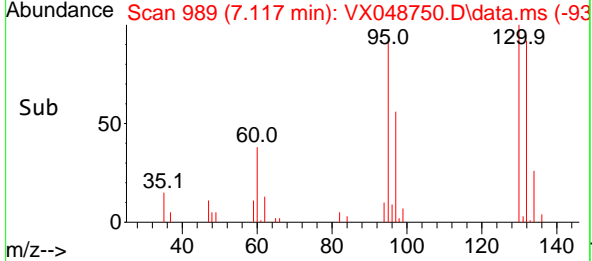
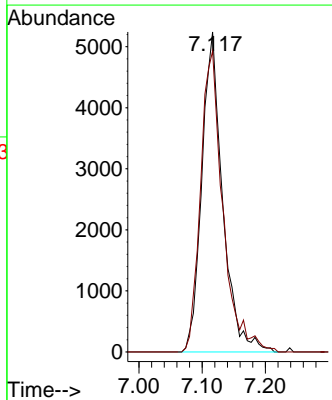
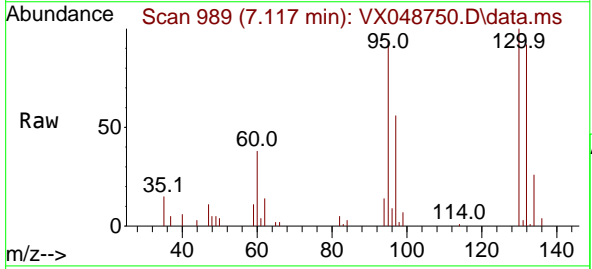


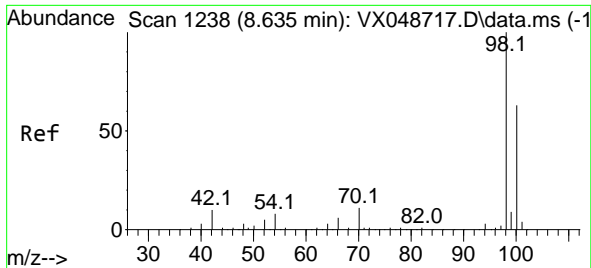
Tgt Ion:117 Resp: 14509  
 Ion Ratio Lower Upper  
 117 100  
 119 7.3 80.5 120.7#  
 121 0.0 25.4 38.0#



#44  
 Trichloroethene  
 Concen: 6.466 ug/l  
 RT: 7.117 min Scan# 989  
 Delta R.T. 0.006 min  
 Lab File: VX048750.D  
 Acq: 08 Dec 2025 13:35

Tgt Ion:130 Resp: 12005  
 Ion Ratio Lower Upper  
 130 100  
 95 94.0 0.0 189.6

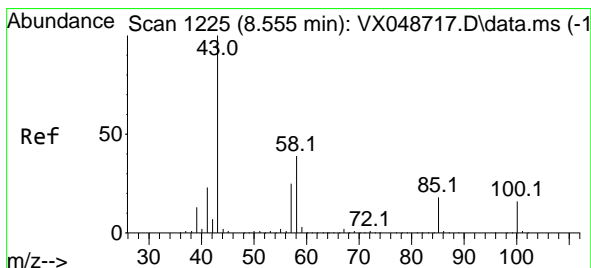
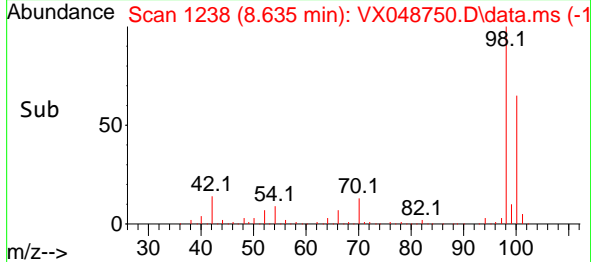
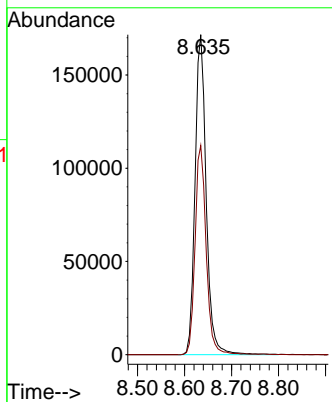
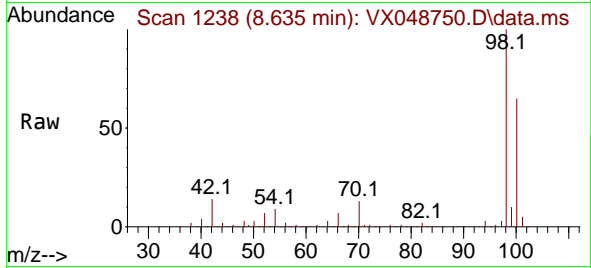




#50  
 Toluene-d8  
 Concen: 46.322 ug/l  
 RT: 8.635 min Scan# 11  
 Delta R.T. -0.000 min  
 Lab File: VX048750.D  
 Acq: 08 Dec 2025 13:35

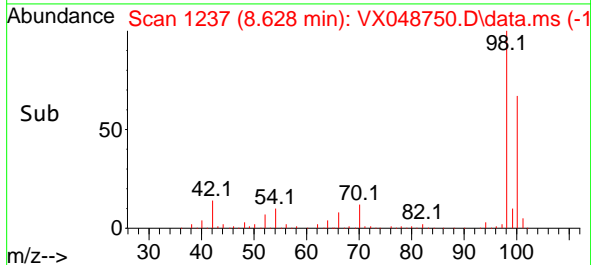
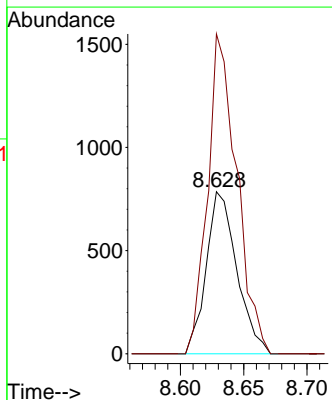
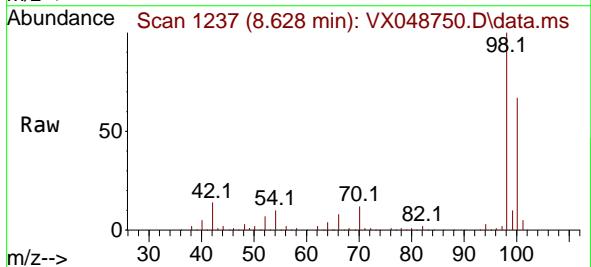
Instrument : MSVOA\_X  
 ClientSampleId : MW-15B-42.5-120425MS

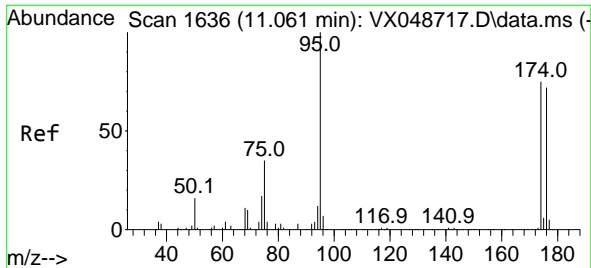
Tgt Ion: 98 Resp: 284538  
 Ion Ratio Lower Upper  
 98 100  
 100 64.9 53.4 80.0



#51  
 4-Methyl-2-Pentanone  
 Concen: 0.490 ug/l  
 RT: 8.628 min Scan# 1237  
 Delta R.T. 0.073 min  
 Lab File: VX048750.D  
 Acq: 08 Dec 2025 13:35

Tgt Ion: 43 Resp: 1320  
 Ion Ratio Lower Upper  
 43 100  
 58 188.5 32.2 48.4#

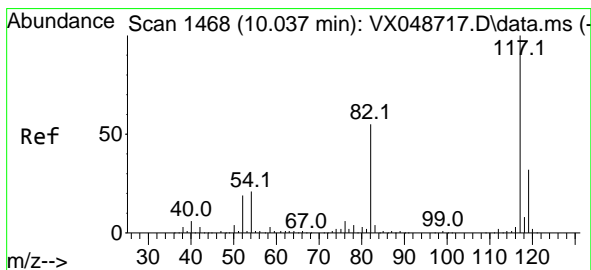
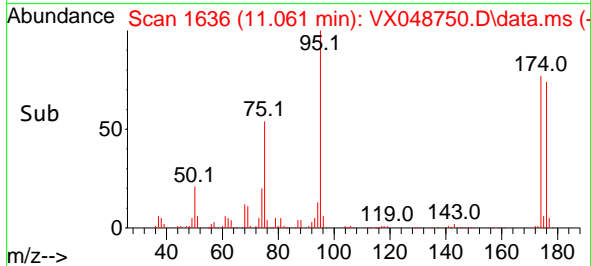
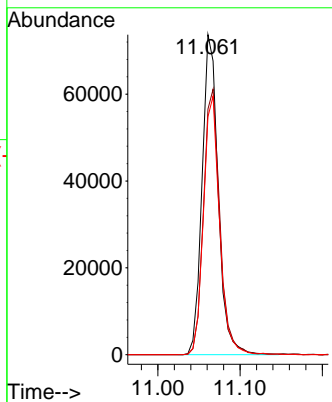
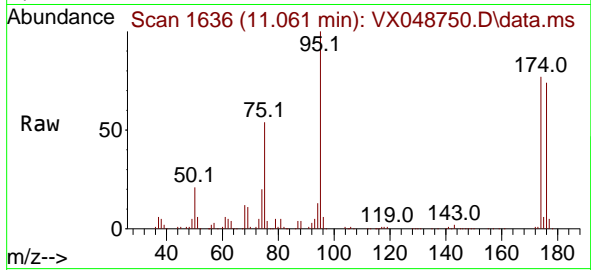




#62  
 4-Bromofluorobenzene  
 Concen: 47.200 ug/l  
 RT: 11.061 min Scan# 1  
 Delta R.T. -0.000 min  
 Lab File: VX048750.D  
 Acq: 08 Dec 2025 13:35

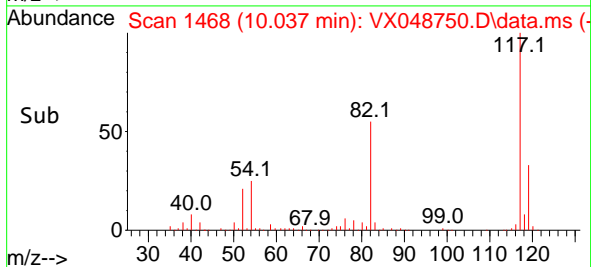
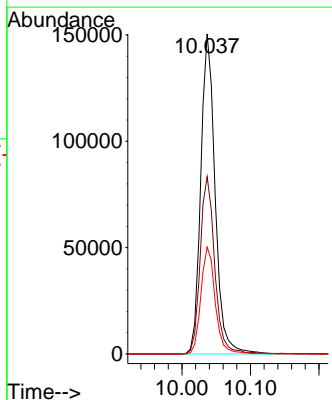
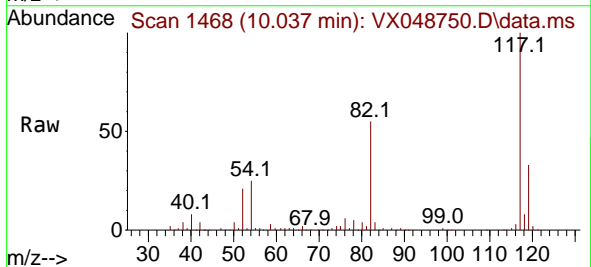
Instrument : MSVOA\_X  
 ClientSampleId : MW-15B-42.5-120425MS

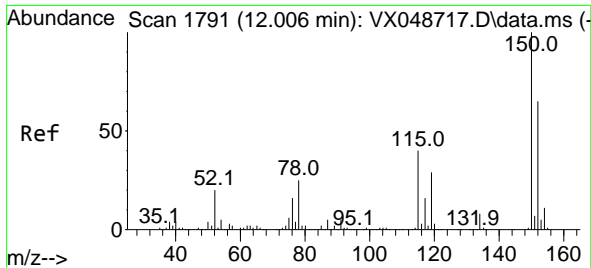
Tgt Ion	Resp	Ion Ratio	Lower	Upper
95	99977	100		
174	84.8	0.0	0.0	157.8
176	81.2	0.0	0.0	154.0



#63  
 Chlorobenzene-d5  
 Concen: 50.000 ug/l  
 RT: 10.037 min Scan# 1468  
 Delta R.T. -0.000 min  
 Lab File: VX048750.D  
 Acq: 08 Dec 2025 13:35

Tgt Ion	Resp	Ion Ratio	Lower	Upper
117	219870	100		
82	55.4	44.1	44.1	66.1
119	33.4	25.2	25.2	37.8



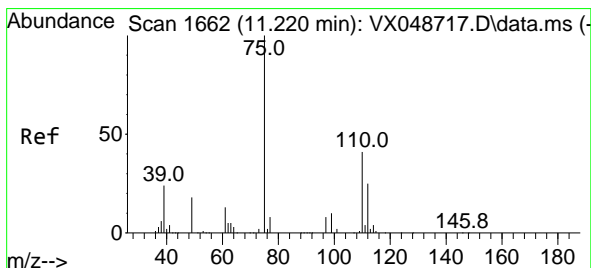
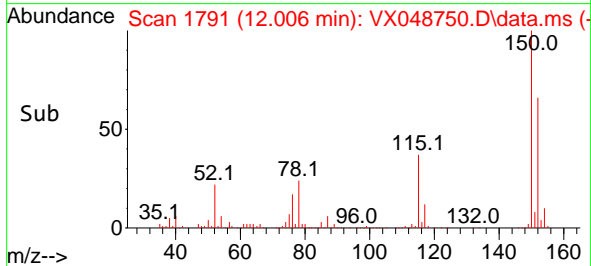
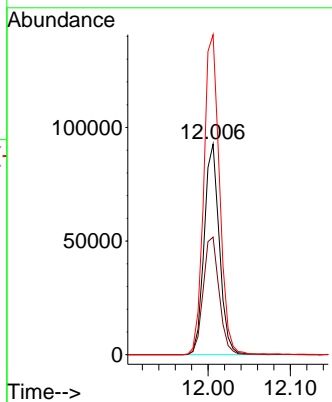
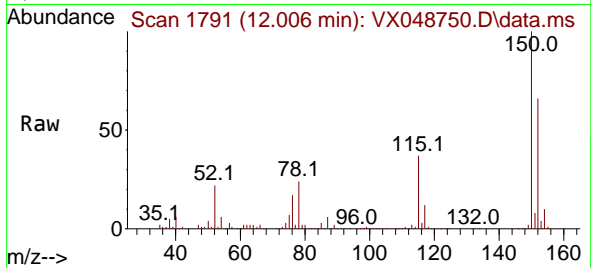


#72  
 1,4-Dichlorobenzene-d4  
 Concen: 50.000 ug/l  
 RT: 12.006 min Scan# 11  
 Delta R.T. -0.000 min  
 Lab File: VX048750.D  
 Acq: 08 Dec 2025 13:35

Instrument : MSVOA\_X  
 ClientSampleId : MW-15B-42.5-120425MS

Tgt Ion:152 Resp: 118869

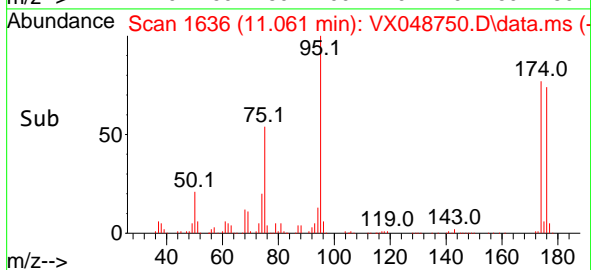
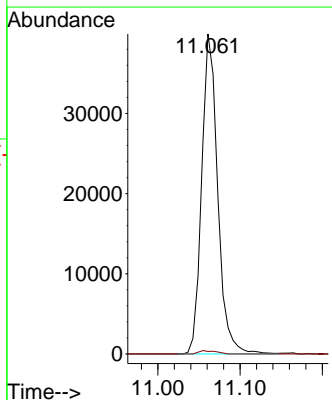
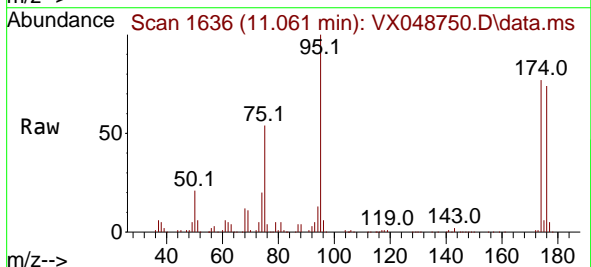
Ion	Ratio	Lower	Upper
152	100		
115	58.8	42.1	126.4
150	157.1	0.0	347.8

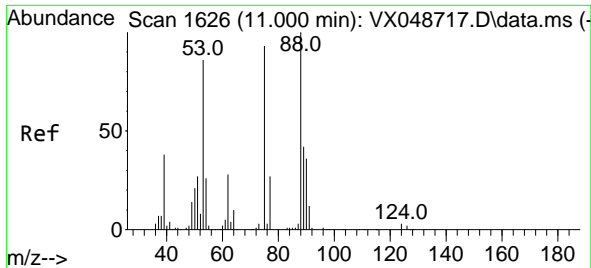


#76  
 1,2,3-Trichloropropane  
 Concen: 24.413 ug/l  
 RT: 11.061 min Scan# 1636  
 Delta R.T. -0.159 min  
 Lab File: VX048750.D  
 Acq: 08 Dec 2025 13:35

Tgt Ion: 75 Resp: 54050

Ion	Ratio	Lower	Upper
75	100		
77	1.1	24.3	73.0#

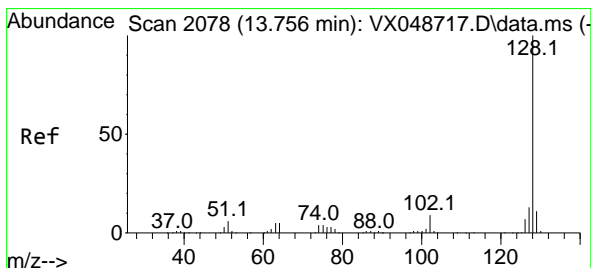
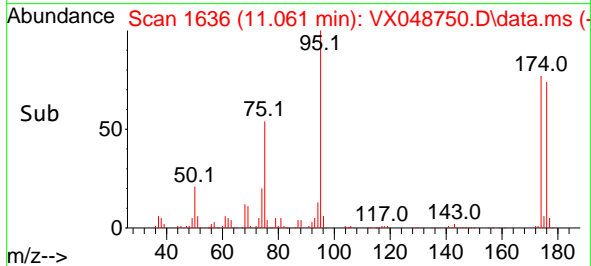
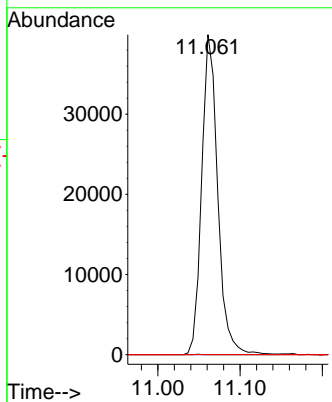
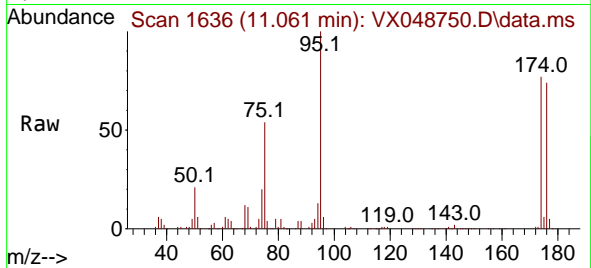




#81  
 trans-1,4-Dichloro-2-butene  
 Concen: 57.991 ug/l  
 RT: 11.061 min Scan# 1  
 Delta R.T. 0.061 min  
 Lab File: VX048750.D  
 Acq: 08 Dec 2025 13:35

Instrument : MSVOA\_X  
 ClientSampleId : MW-15B-42.5-120425MS

Tgt Ion: 75 Resp: 54050  
 Ion Ratio Lower Upper  
 75 100  
 53 0.0 79.9 119.9#  
 89 0.0 67.1 100.7#



#95  
 Naphthalene  
 Concen: Below Cal  
 RT: 13.768 min Scan# 2080  
 Delta R.T. 0.012 min  
 Lab File: VX048750.D  
 Acq: 08 Dec 2025 13:35

Tgt Ion:128 Resp: 158  
 Ion Ratio Lower Upper  
 128 100  
 127 0.0 10.2 15.2#  
 129 0.0 8.6 13.0#

